

# Liftcrane Jib Capacities

Jib No. 123 With 3 810 mm Strut On  
Boom No. 82LR  
67 860 kg Counterweight  
360 Degree Rating

**Maximum Operating Wind Speeds  
(all jib lengths)**

14 m/s with 36.6m thru 54.9m Boom  
10 m/s with 57.9m thru 73.2m Boom  
7 m/s with 76.2m and 79.2m Boom

## 999 SERIES 1

**LIFTING CAPACITIES:** Chart supplements boom capacity chart No. 8317-AM. Lifting capacities for various boom lengths, jib lengths and jib operating radii are for freely suspended loads and are calculated to comply with EN 13000, ISO 4305 and include factors based on a 4.0 degree tipping angle. Capacities based on structural competence are denoted by an asterisk (\*).

Weight of all load blocks, hooks, weight ball, slings, etc., beneath boom and jib point sheaves, is considered part of jib load. Reeved hoist line included in jib weight. Boom and jib are not to be lowered beyond radii where combined weights are greater than rated capacity. Where no capacity is shown, operation is not intended or approved.

**OPERATING CONDITIONS:** Machine to operate in a level position on a firm uniformly supporting surface with gantry up. Refer to boom rigging No. 196100, jib assembly No. 196264 and Wire Rope Specification chart No. 8337-A. Crane operator judgment must be used to allow for dynamic load effects of swinging, hoisting or lowering, travel, wind conditions, as well as adverse operating conditions and physical machine depreciation. Refer to operators manual for operating guidelines.

**WIND CONDITIONS:** Machine may be operated in winds stated in Maximum Operating Wind Speed table provided crane operator judgment is used to allow for wind effect on lifted load and other considerations noted on capacity chart are followed. Wind will have a considerable effect on load with a large "sail area" and must be compensated for accordingly by reducing load ratings, reducing operating speeds, or by a combination of both. Wind speed to be measured at jib point elevation. **Operation is not permitted when wind is above conditions stated in Maximum Operating Wind Speed table.** Park crane (upper inline with crawlers) with load block on ground or secured and position boom at 70 degrees. Lower boom and jib onto blocking at ground level when wind is above 22 m/s for boom lengths 36.6m thru 73.2m or above 18 m/s for boom lengths 76.2m thru 79.2m.

**MACHINE TRAVEL:** Machine to travel on a firm, level [up to 1 percent (0.5 degrees) grade] and uniformly supporting surface. *Travel with 100 percent of rated load prohibited.* Travel restricted to 90 percent of rated capacity with speed not to exceed 0.4 m/s. Boom must be within boom angle range shown in capacity chart. Refer to Maximum Allowable Travel Specification chart No. 8316-B.

**MAX PERMISSIBLE SLEWING SPEED:** Slewing operation with working load shall not exceed 0.4 m/s as measured at the operating radius. The amount of time to brake or start slewing a working load shall not be less than 2.5 seconds.

**OPERATING RADIUS:** Operating radius is horizontal distance from axis of rotation to center of vertical hoist line or load block. Boom angle is angle between horizontal and centerline of boom butt and inserts, and is an indication of operating radius. In all cases, operating radius shall govern capacity.

**JIB POINT ELEVATION:** Jib point elevation is vertical distance from ground level to centerline of jib point shaft.

**MACHINE EQUIPMENT:** Machine equipped with 8 585 mm crawlers, 1 219 mm treads, 3 124 mm retractable gantry, 9 144 mm live mast, 20 part boom hoist reeving, boom support straps and 67 860 kg counterweight.

Maximum capacity on 26 mm wire rope is 13 380 kg per line (9 070 kg on 26 mm wire rope when auxiliary drum is used).

**Boom Catwalks Deduct**

Deduct 250 kg from capacities when boom catwalks are attached.



# Liftcrane Jib Capacities

Jib No. 123 With 3 810 mm Strut On  
 Boom No. 82LR  
 67 860 kg Counterweight  
 360 Degree Rating

**Maximum Operating Wind Speeds  
 (all jib lengths)**

14 m/s with 36.6m thru 54.9m Boom  
 10 m/s with 57.9m thru 73.2m Boom  
 7 m/s with 76.2m and 79.2m Boom

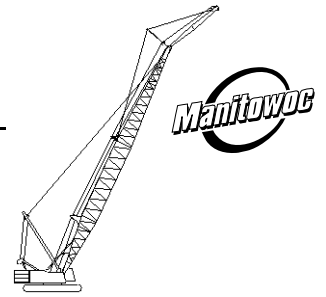
## 999 SERIES 1

<b>WITHOUT BOOM CATWALKS</b>			
<b>Maximum Boom and Jib Lengths Lifted Unassisted</b>			
Over End of Blocked Crawlers		Over Side of Crawlers	
Boom Length	Jib No. 123	Boom Length	Jib No. 123
(a)(b) 85.3m	—	(c) 79.2m	—
82.3m	—	76.2m	—
(c) 79.2m	12.2m - 15.2m	(c) 73.2m	9.1m - 12.2m
79.2m	9.1m	(c)70.1m	18.3m
(c) 76.2m	18.3m	70.1m	15.2m
76.2m	15.2m	67.1m	18.3m
73.2m	18.3m		

Load block, hook and weight ball on ground at start.  
 (a) Upper boom point must be removed.  
 (b) Machine must be equipped with optional lowerworks jacking cylinders.  
 (c) Raising reserve is less than 10% tip weight.

<b>WITH BOOM CATWALKS</b>			
<b>Maximum Boom and Jib Lengths Lifted Unassisted</b>			
Over End of Blocked Crawlers		Over Side of Crawlers	
Boom Length	Jib No. 123	Boom Length	Jib No. 123
(b) 85.3m	—	(b) 79.2m	—
82.3m	—	76.2m	—
(a)(b) 79.2m	9.1m - 15.2m	(b) 73.2m	9.1m - 12.2m
(b) 76.2m	15.2m - 18.3m	(b) 70.1m	15.2m - 18.3m
76.2m	12.2m	70.1m	12.2m
73.2m	18.3m	67.1m	18.3m

Load block, hook and weight ball on ground at start.  
 (a) Machine must be equipped with optional lowerworks jacking cylinders.  
 (b) Raising reserve is less than 10% tip weight.



# Liftcrane Jib Capacities

Jib No. 123 With 3 810 mm Strut On  
Boom No. 82LR  
67 860 kg Counterweight  
360 Degree Rating

**Maximum Operating Wind Speeds  
(all jib lengths)**  
14 m/s with 36.6m thru 54.9m Boom  
10 m/s with 57.9m thru 73.2m Boom  
7 m/s with 76.2m and 79.2m Boom

## 999 SERIES 1

### 9.1m (30 Ft.) JIB

Jib Oper. Rad. Meters	0 Degree Offset			10 Degree Offset			20 Degree Offset			Jib Oper. Rad. Meters
	Boom Ang. Deg.	Jib Point Elev. Meters	Jib Capacity Kilograms	Boom Ang. Deg.	Jib Point Elev. Meters	Jib Capacity Kilograms	Boom Ang. Deg.	Jib Point Elev. Meters	Jib Capacity Kilograms	
<b>36.6m (120 Ft.) BOOM</b>										
10.7	79.3	47.8	18 100*							10.7
12.0	77.6	47.5	18 100*							12.0
14.0	75.1	47.0	18 100*	77.0	46.8	18 100*	78.8	46.3	18 100*	14.0
16.0	72.5	46.4	18 100*	74.4	46.2	18 100*	76.2	45.7	18 100*	16.0
18.0	69.9	45.6	18 100*	71.7	45.4	18 100*	73.5	45.0	18 100*	18.0
20.0	67.2	44.8	18 100*	69.0	44.6	18 100*	70.8	44.1	18 100*	20.0
22.0	64.4	43.9	18 100*	66.3	43.7	18 100*	68.0	43.2	18 100*	22.0
24.0	61.6	42.8	18 100*	63.5	42.6	18 100*	65.1	42.1	17 900*	24.0
26.0	58.8	41.7	18 100*	60.6	41.4	18 100*	62.2	40.9	17 200*	26.0
28.0	55.8	40.3	18 100*	57.6	40.1	18 100*	59.2	39.6	16 400*	28.0
32.0	49.5	37.2	16 300	51.2	36.9	16 500	52.7	36.4	15 200*	32.0
36.0	42.5	33.2	13 600	44.2	32.9	13 800	45.5	32.3	13 900	36.0
40.0	34.4	28.1	11 500	35.9	27.7	11 600				40.0
44.0	23.9	20.6	9 900							44.0
<b>39.6m (130 Ft.) BOOM</b>										
10.7	80.0	50.9	18 100*							10.7
12.0	78.4	50.6	18 100*							12.0
14.0	76.0	50.1	18 100*	77.8	49.9	18 100*	79.5	49.5	18 100*	14.0
16.0	73.6	49.6	18 100*	75.4	49.3	18 100*	77.1	48.9	18 100*	16.0
18.0	71.2	48.9	18 100*	72.9	48.7	18 100*	74.6	48.2	18 100*	18.0
20.0	68.7	48.1	18 100*	70.4	47.9	18 100*	72.1	47.4	18 100*	20.0
22.0	66.1	47.3	18 100*	67.9	47.1	18 100*	69.5	46.6	18 100*	22.0
24.0	63.5	46.3	18 100*	65.3	46.1	18 100*	66.9	45.6	18 100*	24.0
26.0	60.9	45.2	18 100*	62.6	45.0	18 100*	64.2	44.5	17 700*	26.0
28.0	58.2	44.0	18 100*	59.9	43.8	18 100*	61.4	43.2	17 000*	28.0
32.0	52.5	41.2	16 100	54.1	40.9	16 300	55.6	40.4	15 600*	32.0
36.0	46.3	37.6	13 400	47.9	37.4	13 600	49.2	36.7	13 700	36.0
40.0	39.3	33.2	11 300	40.9	32.9	11 500	42.1	32.2	11 600	40.0
44.0	31.1	27.4	9 700	32.5	27.0	9 800				44.0



# Liftcrane Jib Capacities

Jib No. 123 With 3 810 mm Strut On  
Boom No. 82LR  
67 860 kg Counterweight  
360 Degree Rating

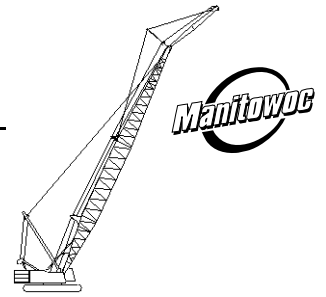
**Maximum Operating Wind Speeds  
(all jib lengths)**

14 m/s with 36.6m thru 54.9m Boom  
10 m/s with 57.9m thru 73.2m Boom  
7 m/s with 76.2m and 79.2m Boom

## 999 SERIES 1

### 9.1m (30 Ft.) JIB

Jib Oper. Rad. Meters	0 Degree Offset			10 Degree Offset			20 Degree Offset			Jib Oper. Rad. Meters
	Boom Ang. Deg.	Jib Point Elev. Meters	Jib Capacity Kilograms	Boom Ang. Deg.	Jib Point Elev. Meters	Jib Capacity Kilograms	Boom Ang. Deg.	Jib Point Elev. Meters	Jib Capacity Kilograms	
<b>42.7m (140 Ft.) BOOM</b>										
10.7	80.6	54.0	18 100 *							10.7
12.0	79.1	53.7	18 100 *							12.0
14.0	76.9	53.3	18 100 *	78.5	53.1	18 100*	80.2	52.6	18 100*	14.0
16.0	74.6	52.7	18 100 *	76.2	52.5	18 100*	77.9	52.1	18 100*	16.0
18.0	72.3	52.1	18 100 *	73.9	51.9	18 100*	75.5	51.4	18 100*	18.0
20.0	70.0	51.4	18 100 *	71.6	51.2	18 100*	73.2	50.7	18 100*	20.0
22.0	67.6	50.6	18 100 *	69.2	50.4	18 100*	70.8	49.9	18 100*	22.0
24.0	65.2	49.7	18 100 *	66.8	49.5	18 100*	68.3	49.0	18 100*	24.0
26.0	62.8	48.7	18 100 *	64.4	48.5	18 100*	65.9	48.0	18 100*	26.0
28.0	60.2	47.6	18 100 *	61.8	47.3	18 100*	63.3	46.8	17 400*	28.0
32.0	55.0	45.0	15 900	56.6	44.7	16 100	58.0	44.2	16 100*	32.0
36.0	49.4	41.8	13 300	50.9	41.5	13 400	52.3	40.9	13 600	36.0
40.0	43.3	37.9	11 200	44.8	37.6	11 300	46.0	36.9	11 400	40.0
44.0	36.3	33.0	9 500	37.8	32.6	9 600				44.0
48.0	27.9	26.5	8 100							48.0
<b>45.7m (150 Ft.) BOOM</b>										
12.2	79.5	56.8	18 100 *							12.2
14.0	77.6	56.4	18 100 *	79.2	56.2	18 100*	80.7	55.7	18 100*	14.0
16.0	75.5	55.9	18 100 *	77.0	55.7	18 100*	78.6	55.2	18 100*	16.0
18.0	73.3	55.3	18 100 *	74.9	55.1	18 100*	76.4	54.6	18 100*	18.0
20.0	71.1	54.6	18 100 *	72.7	54.4	18 100*	74.2	54.0	18 100*	20.0
22.0	68.9	53.9	18 100 *	70.5	53.7	18 100*	71.9	53.2	18 100*	22.0
24.0	66.7	53.1	18 100 *	68.2	52.8	18 100*	69.6	52.3	18 100*	24.0
26.0	64.4	52.1	18 100 *	65.9	51.9	18 100*	67.3	51.4	18 100*	26.0
28.0	62.0	51.1	18 100 *	63.6	50.9	18 100*	65.0	50.3	17 900*	28.0
32.0	57.2	48.7	15 700	58.7	48.4	16 000	60.0	47.9	16 200	32.0
36.0	52.1	45.8	13 100	53.5	45.5	13 300	54.8	44.9	13 400	36.0
40.0	46.6	42.3	11 000	48.0	42.0	11 200	49.2	41.3	11 300	40.0
44.0	40.5	38.0	9 300	41.9	37.6	9 400	43.0	36.9	9 500	44.0
48.0	33.5	32.5	7 900	34.8	32.2	8 000				48.0
52.0	24.8	25.2	6 800							52.0



# Liftcrane Jib Capacities

Jib No. 123 With 3 810 mm Strut On  
Boom No. 82LR  
67 860 kg Counterweight  
360 Degree Rating

**Maximum Operating Wind Speeds  
(all jib lengths)**

14 m/s with 36.6m thru 54.9m Boom  
10 m/s with 57.9m thru 73.2m Boom  
7 m/s with 76.2m and 79.2m Boom

## 999 SERIES 1

### 9.1m (30 Ft.) JIB

Jib Oper. Rad. Meters	0 Degree Offset			10 Degree Offset			20 Degree Offset			Jib Oper. Rad. Meters
	Boom Ang. Deg.	Jib Point Elev. Meters	Jib Capacity Kilograms	Boom Ang. Deg.	Jib Point Elev. Meters	Jib Capacity Kilograms	Boom Ang. Deg.	Jib Point Elev. Meters	Jib Capacity Kilograms	
<b>48.8m (160 Ft.) BOOM</b>										
12.2	80.1	59.9	18 100 *							12.2
14.0	78.3	59.5	18 100 *	79.8	59.3	18 100*				14.0
16.0	76.2	59.0	18 100 *	77.7	58.8	18 100*	79.2	58.4	18 100*	16.0
18.0	74.2	58.5	18 100 *	75.7	58.3	18 100*	77.1	57.8	18 100*	18.0
20.0	72.1	57.9	18 100 *	73.6	57.7	18 100*	75.0	57.2	18 100*	20.0
22.0	70.1	57.2	18 100 *	71.5	56.9	18 100*	72.9	56.5	18 100*	22.0
24.0	68.0	56.4	18 100 *	69.4	56.2	18 100*	70.8	55.7	18 100*	24.0
26.0	65.8	55.5	18 100 *	67.3	55.3	18 100*	68.6	54.8	18 100*	26.0
28.0	63.6	54.5	18 100	65.1	54.3	18 100*	66.4	53.8	18 000*	28.0
32.0	59.1	52.3	15 400	60.5	52.0	15 700	61.8	51.5	15 900	32.0
36.0	54.4	49.6	12 800	55.8	49.4	13 000	57.0	48.8	13 200	36.0
40.0	49.4	46.4	10 700	50.7	46.1	10 800	51.9	45.5	11 000	40.0
44.0	43.9	42.5	9 000	45.2	42.2	9 100	46.3	41.6	9 200	44.0
48.0	37.8	37.8	7 600	39.1	37.5	7 700				48.0
52.0	30.8	31.8	6 500	32.0	31.4	6 600				52.0
56.0	21.7	23.5	5 500							56.0
<b>51.8m (170 Ft.) BOOM</b>										
12.2	80.6	63.0	18 100 *							12.2
14.0	78.8	62.6	18 100 *	80.3	62.4	18 100*				14.0
16.0	76.9	62.2	18 100 *	78.4	62.0	18 100*	79.7	61.5	18 100*	16.0
18.0	75.0	61.7	18 100 *	76.4	61.5	18 100*	77.8	61.0	18 100*	18.0
20.0	73.1	61.1	18 100 *	74.5	60.9	18 100*	75.8	60.4	18 100*	20.0
22.0	71.1	60.4	18 100 *	72.5	60.2	18 100*	73.8	59.7	18 100*	22.0
24.0	69.1	59.7	18 100 *	70.5	59.4	18 100*	71.8	58.9	18 100*	24.0
26.0	67.1	58.8	18 100 *	68.5	58.6	18 100*	69.8	58.1	18 100*	26.0
28.0	65.0	57.9	18 000	66.4	57.7	18 100*	67.7	57.2	18 100*	28.0
32.0	60.8	55.8	15 200	62.2	55.6	15 500	63.4	55.1	15 700	32.0
36.0	56.4	53.3	12 600	57.8	53.1	12 800	59.0	52.5	13 000	36.0
40.0	51.8	50.4	10 500	53.1	50.1	10 700	54.2	49.5	10 800	40.0
44.0	46.8	46.9	8 800	48.1	46.6	8 900	49.2	45.9	9 100	44.0
48.0	41.4	42.7	7 400	42.6	42.3	7 500	43.6	41.6	7 600	48.0
52.0	35.3	37.5	6 300	36.5	37.1	6 300				52.0
56.0	28.1	30.9	5 300							56.0



# Liftcrane Jib Capacities

Jib No. 123 With 3 810 mm Strut On  
Boom No. 82LR  
67 860 kg Counterweight  
360 Degree Rating

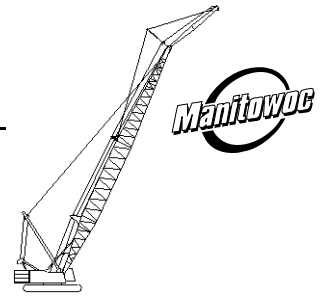
**Maximum Operating Wind Speeds  
(all jib lengths)**

14 m/s with 36.6m thru 54.9m Boom  
10 m/s with 57.9m thru 73.2m Boom  
7 m/s with 76.2m and 79.2m Boom

## 999 SERIES 1

### 9.1m (30 Ft.) JIB

Jib Oper. Rad. Meters	0 Degree Offset			10 Degree Offset			20 Degree Offset			Jib Oper. Rad. Meters
	Boom Ang. Deg.	Jib Point Elev. Meters	Jib Capacity Kilograms	Boom Ang. Deg.	Jib Point Elev. Meters	Jib Capacity Kilograms	Boom Ang. Deg.	Jib Point Elev. Meters	Jib Capacity Kilograms	
<b>54.9m (180 Ft.) BOOM</b>										
12.2	81.0	66.1	18 100 *							12.2
14.0	79.4	65.7	18 100 *	80.7	65.5	18 100*				14.0
16.0	77.6	65.3	18 100 *	78.9	65.1	18 100*	80.2	64.6	18 100*	16.0
18.0	75.7	64.8	18 100 *	77.1	64.6	18 100*	78.4	64.1	18 100*	18.0
20.0	73.9	64.3	18 100 *	75.2	64.0	18 100*	76.5	63.6	18 100*	20.0
22.0	72.0	63.6	18 100 *	73.4	63.4	18 100*	74.6	62.9	18 100*	22.0
24.0	70.1	62.9	18 100 *	71.5	62.7	18 100*	72.7	62.2	18 100*	24.0
26.0	68.2	62.1	18 100 *	69.5	61.9	18 100*	70.8	61.4	18 100*	26.0
28.0	66.3	61.3	17 900	67.6	61.1	18 000	68.8	60.5	18 100*	28.0
32.0	62.3	59.3	15 000	63.6	59.1	15 300	64.8	58.5	15 600	32.0
36.0	58.2	57.0	12 300	59.5	56.7	12 600	60.7	56.2	12 800	36.0
40.0	53.9	54.2	10 300	55.2	54.0	10 400	56.3	53.4	10 600	40.0
44.0	49.3	51.0	8 500	50.6	50.7	8 700	51.6	50.1	8 900	44.0
48.0	44.4	47.2	7 200	45.6	46.9	7 300	46.6	46.2	7 500	48.0
52.0	39.0	42.6	6 000	40.2	42.3	6 200	41.1	41.5	6 300	52.0
56.0	32.9	37.0	5 100	34.0	36.6	5 100				56.0
60.0	25.5	29.7	4 200							60.0
<b>57.9m (190 Ft.) BOOM</b>										
13.7	80.1	68.9	18 100 *							13.7
14.0	79.9	68.9	18 100 *							14.0
16.0	78.1	68.4	18 100 *	79.4	68.2	18 100*				16.0
18.0	76.4	68.0	18 100 *	77.7	67.8	18 100*	78.9	67.3	18 100*	18.0
20.0	74.6	67.4	18 100 *	75.9	67.2	18 100*	77.2	66.7	18 100*	20.0
22.0	72.9	66.8	18 100 *	74.1	66.6	18 100*	75.4	66.1	18 100*	22.0
24.0	71.1	66.2	18 100 *	72.3	65.9	18 100*	73.6	65.4	18 100*	24.0
26.0	69.3	65.4	18 100 *	70.5	65.2	18 100*	71.7	64.7	18 100*	26.0
28.0	67.4	64.6	17 800	68.7	64.4	18 000	69.9	63.9	18 100	28.0
32.0	63.7	62.7	14 800	64.9	62.5	15 100	66.1	62.0	15 400	32.0
36.0	59.8	60.6	12 100	61.0	60.3	12 400	62.2	59.8	12 600	36.0
40.0	55.8	58.0	10 000	57.0	57.7	10 200	58.1	57.2	10 400	40.0
44.0	51.5	55.0	8 400	52.7	54.7	8 500	53.8	54.1	8 700	44.0
48.0	47.0	51.5	7 000	48.2	51.2	7 100	49.2	50.5	7 200	48.0
52.0	42.1	47.3	5 800	43.3	47.0	5 900	44.2	46.3	6 000	52.0
56.0	36.7	42.4	4 900	37.8	42.0	4 900				56.0
60.0	30.5	36.3	4 000	31.5	35.8	4 100				60.0
64.0	22.8	28.1	3 300							64.0



# Liftcrane Jib Capacities

Jib No. 123 With 3 810 mm Strut On  
Boom No. 82LR  
67 860 kg Counterweight  
360 Degree Rating

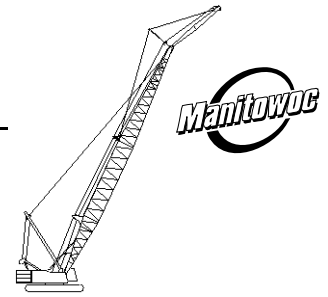
**Maximum Operating Wind Speeds  
(all jib lengths)**

14 m/s with 36.6m thru 54.9m Boom  
10 m/s with 57.9m thru 73.2m Boom  
7 m/s with 76.2m and 79.2m Boom

## 999 SERIES 1

### 9.1m (30 Ft.) JIB

Jib Oper. Rad. Meters	0 Degree Offset			10 Degree Offset			20 Degree Offset			Jib Oper. Rad. Meters
	Boom Ang. Deg.	Jib Point Elev. Meters	Jib Capacity Kilograms	Boom Ang. Deg.	Jib Point Elev. Meters	Jib Capacity Kilograms	Boom Ang. Deg.	Jib Point Elev. Meters	Jib Capacity Kilograms	
<b>61.0m (200 Ft.) BOOM</b>										
13.7	80.5	72.0	18 100 *							13.7
14.0	80.3	72.0	18 100 *							14.0
16.0	78.7	71.6	18 100 *	79.9	71.3	18 100*				16.0
18.0	77.0	71.1	18 100 *	78.2	70.9	18 100*	79.4	70.4	18 100*	18.0
20.0	75.3	70.6	18 100 *	76.5	70.4	18 100*	77.7	69.9	18 100*	20.0
22.0	73.6	70.0	18 100 *	74.8	69.8	18 100*	76.0	69.3	18 100*	22.0
24.0	71.9	69.4	18 100 *	73.1	69.2	18 100*	74.3	68.7	18 100*	24.0
26.0	70.2	68.7	18 100 *	71.4	68.5	18 100*	72.6	68.0	18 100*	26.0
28.0	68.5	67.9	17 700	69.7	67.7	17 800	70.8	67.2	17 900	28.0
32.0	64.9	66.1	14 500	66.1	65.9	14 800	67.2	65.4	15 100	32.0
36.0	61.3	64.1	11 800	62.4	63.8	12 100	63.5	63.3	12 300	36.0
40.0	57.5	61.7	9 700	58.6	61.4	9 900	59.7	60.8	10 200	40.0
44.0	53.5	58.9	8 100	54.6	58.6	8 200	55.6	58.0	8 400	44.0
48.0	49.3	55.6	6 700	50.4	55.3	6 800	51.4	54.7	7 000	48.0
52.0	44.8	51.8	5 500	45.9	51.5	5 600	46.8	50.8	5 700	52.0
56.0	40.0	47.4	4 500	41.0	47.0	4 600	41.9	46.3	4 700	56.0
60.0	34.5	42.0	3 700	35.6	41.6	3 800				60.0
64.0	28.2	35.3	2 900	29.2	34.9	3 000				64.0
<b>64.0m (210 Ft.) BOOM</b>										
13.7	80.9	75.1	18 100 *							13.7
14.0	80.7	75.0	18 100 *							14.0
16.0	79.1	74.7	18 100 *	80.3	74.5	18 100*				16.0
18.0	77.5	74.2	18 100 *	78.7	74.0	18 100*	79.9	73.5	18 100*	18.0
20.0	75.9	73.8	18 100 *	77.1	73.5	18 100*	78.3	73.0	18 100*	20.0
22.0	74.3	73.2	18 100 *	75.5	73.0	18 100*	76.6	72.5	18 100*	22.0
24.0	72.7	72.6	18 100 *	73.9	72.4	18 100*	75.0	71.9	18 100*	24.0
26.0	71.1	71.9	18 100	72.2	71.7	18 100*	73.3	71.2	18 100*	26.0
28.0	69.4	71.2	17 400	70.6	71.0	17 600	71.7	70.5	17 800	28.0
32.0	66.0	69.5	14 200	67.2	69.3	14 600	68.2	68.8	14 900	32.0
36.0	62.6	67.5	11 600	63.7	67.3	11 900	64.7	66.8	12 100	36.0
40.0	59.0	65.3	9 500	60.1	65.0	9 700	61.1	64.5	9 900	40.0
44.0	55.2	62.6	7 800	56.3	62.4	8 000	57.3	61.8	8 200	44.0
48.0	51.3	59.6	6 400	52.4	59.3	6 600	53.4	58.7	6 700	48.0
52.0	47.2	56.1	5 300	48.3	55.8	5 400	49.1	55.1	5 500	52.0
56.0	42.7	52.0	4 300	43.8	51.7	4 400	44.6	51.0	4 500	56.0
60.0	37.9	47.2	3 400	38.9	46.9	3 600				60.0
64.0	32.4	41.4	2 700	33.4	41.0	2 800				64.0
68.0	25.9	34.1	2 100							68.0



# Liftcrane Jib Capacities

Jib No. 123 With 3 810 mm Strut On  
Boom No. 82LR  
67 860 kg Counterweight  
360 Degree Rating

**Maximum Operating Wind Speeds  
(all jib lengths)**

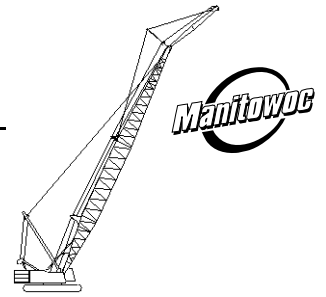
14 m/s with 36.6m thru 54.9m Boom  
10 m/s with 57.9m thru 73.2m Boom  
7 m/s with 76.2m and 79.2m Boom

## 999 SERIES 1

### 9.1m (30 Ft.) JIB

Jib Oper. Rad. Meters	0 Degree Offset			10 Degree Offset			20 Degree Offset			Jib Oper. Rad. Meters
	Boom Ang. Deg.	Jib Point Elev. Meters	Jib Capacity Kilograms	Boom Ang. Deg.	Jib Point Elev. Meters	Jib Capacity Kilograms	Boom Ang. Deg.	Jib Point Elev. Meters	Jib Capacity Kilograms	
<b>67.1m (220 Ft.) BOOM</b>										
15.2	80.1	77.9	18 100 *							15.2
16.0	79.6	77.8	18 100 *							16.0
18.0	78.0	77.4	18 100 *	79.2	77.2	18 100*				18.0
20.0	76.5	76.9	18 100 *	77.6	76.7	18 100*	78.7	76.2	18 100*	20.0
22.0	75.0	76.4	18 100 *	76.1	76.2	18 100*	77.2	75.7	18 100*	22.0
24.0	73.4	75.8	18 100 *	74.5	75.6	18 100*	75.6	75.1	18 100*	24.0
26.0	71.8	75.1	18 000	73.0	74.9	18 100	74.0	74.4	18 100	26.0
28.0	70.3	74.4	16 900	71.4	74.2	17 300	72.4	73.7	17 700	28.0
32.0	67.0	72.8	13 800	68.1	72.6	14 200	69.2	72.1	14 500	32.0
36.0	63.7	71.0	11 400	64.8	70.7	11 600	65.8	70.2	11 900	36.0
40.0	60.3	68.8	9 300	61.4	68.6	9 500	62.4	68.0	9 700	40.0
44.0	56.8	66.3	7 600	57.9	66.1	7 800	58.8	65.5	8 000	44.0
48.0	53.1	63.5	6 200	54.2	63.2	6 400	55.1	62.6	6 500	48.0
52.0	49.3	60.2	5 000	50.3	59.9	5 200	51.2	59.3	5 300	52.0
56.0	45.2	56.4	4 000	46.2	56.1	4 200	47.0	55.5	4 300	56.0
60.0	40.8	52.1	3 200	41.7	51.8	3 300	42.5	51.0	3 400	60.0
64.0	35.9	46.9	2 400	36.8	46.6	2 500				64.0
68.0	30.3	40.7	1 900	31.2	40.3	1 900				68.0
<b>70.1m (230 Ft.) BOOM</b>										
15.2	80.5	81.0	18 100 *							15.2
16.0	80.0	80.9	18 100 *							16.0
18.0	78.5	80.5	18 100 *	79.6	80.3	18 100*				18.0
20.0	77.0	80.0	18 100 *	78.1	79.8	18 100*	79.2	79.3	18 100*	20.0
22.0	75.6	79.5	18 100 *	76.6	79.3	18 100*	77.7	78.8	18 100*	22.0
24.0	74.1	79.0	18 100 *	75.1	78.8	18 100*	76.2	78.3	18 100*	24.0
26.0	72.6	78.4	18 000	73.6	78.1	18 000	74.7	77.6	18 100	26.0
28.0	71.0	77.7	16 400	72.1	77.5	16 800	73.1	76.9	17 300	28.0
32.0	68.0	76.2	13 400	69.0	75.9	13 700	70.0	75.4	14 100	32.0
36.0	64.8	74.4	11 100	65.9	74.1	11 400	66.8	73.6	11 700	36.0
40.0	61.6	72.3	9 000	62.6	72.1	9 300	63.6	71.5	9 500	40.0
44.0	58.2	69.9	7 300	59.3	69.7	7 600	60.2	69.1	7 700	44.0
48.0	54.8	67.3	5 900	55.8	67.0	6 100	56.7	66.4	6 300	48.0
52.0	51.2	64.2	4 800	52.2	63.9	4 900	53.0	63.3	5 100	52.0
56.0	47.3	60.7	3 800	48.3	60.4	3 900	49.1	59.7	4 000	56.0
60.0	43.3	56.7	2 900	44.2	56.4	3 100	45.0	55.6	3 200	60.0
64.0	38.8	52.0	2 200	39.8	51.7	2 300	40.5	50.9	2 400	64.0





# Liftcrane Jib Capacities

Jib No. 123 With 3 810 mm Strut On  
Boom No. 82LR  
67 860 kg Counterweight  
360 Degree Rating

**Maximum Operating Wind Speeds  
(all jib lengths)**

14 m/s with 36.6m thru 54.9m Boom  
10 m/s with 57.9m thru 73.2m Boom  
7 m/s with 76.2m and 79.2m Boom

## 999 SERIES 1

### 9.1m (30 Ft.) JIB

Jib Oper. Rad. Meters	0 Degree Offset			10 Degree Offset			20 Degree Offset			Jib Oper. Rad. Meters
	Boom Ang. Deg.	Jib Point Elev. Meters	Jib Capacity Kilograms	Boom Ang. Deg.	Jib Point Elev. Meters	Jib Capacity Kilograms	Boom Ang. Deg.	Jib Point Elev. Meters	Jib Capacity Kilograms	
<b>73.2m (240 Ft.) BOOM</b>										
15.2	80.9	84.1	18 100 *							15.2
16.0	80.3	84.0	18 100 *							16.0
18.0	78.9	83.6	18 100 *	80.0	83.4	18 100*				18.0
20.0	77.5	83.2	18 100 *	78.6	82.9	18 100*	79.6	82.5	18 100*	20.0
22.0	76.1	82.7	18 100 *	77.1	82.5	18 100*	78.2	82.0	18 100*	22.0
24.0	74.7	82.1	18 100 *	75.7	81.9	18 100*	76.7	81.4	18 100*	24.0
26.0	73.2	81.6	17 600	74.3	81.3	18 000	75.3	80.8	18 000	26.0
28.0	71.8	80.9	15 800	72.8	80.7	16 200	73.8	80.2	16 700	28.0
32.0	68.8	79.4	12 900	69.8	79.2	13 300	70.8	78.7	13 600	32.0
36.0	65.8	77.7	10 600	66.8	77.5	10 900	67.8	77.0	11 200	36.0
40.0	62.7	75.8	8 700	63.7	75.5	9 000	64.7	75.0	9 300	40.0
44.0	59.5	73.5	7 000	60.5	73.3	7 200	61.4	72.7	7 500	44.0
48.0	56.3	71.0	5 600	57.2	70.7	5 800	58.1	70.1	6 000	48.0
52.0	52.8	68.1	4 400	53.8	67.8	4 600	54.7	67.2	4 800	52.0
56.0	49.3	64.8	3 500	50.2	64.5	3 600	51.0	63.9	3 800	56.0
60.0	45.5	61.1	2 600	46.4	60.8	2 700	47.2	60.1	2 900	60.0
64.0	41.4	56.8	1 900	42.3	56.5	2 000	43.0	55.7	2 100	64.0
<b>76.2m (250 Ft.) BOOM</b>										
16.8	80.2	86.9	18 100 *							16.8
18.0	79.3	86.7	18 100 *							18.0
20.0	78.0	86.3	18 100 *	79.0	86.1	18 100*	80.0	85.6	18 100*	20.0
22.0	76.6	85.8	18 100 *	77.6	85.6	18 100*	78.6	85.1	18 100*	22.0
24.0	75.2	85.3	18 100 *	76.2	85.1	18 100*	77.2	84.6	18 100*	24.0
26.0	73.8	84.7	17 100	74.8	84.5	17 600	75.8	84.0	18 000	26.0
28.0	72.4	84.1	15 400	73.4	83.9	15 800	74.4	83.4	16 200	28.0
32.0	69.6	82.7	12 500	70.6	82.5	12 900	71.5	82.0	13 200	32.0
36.0	66.7	81.1	10 200	67.7	80.8	10 500	68.6	80.3	10 800	36.0
40.0	63.8	79.2	8 400	64.7	79.0	8 600	65.6	78.4	8 900	40.0
44.0	60.7	77.1	6 700	61.7	76.8	7 000	62.6	76.3	7 200	44.0
48.0	57.6	74.6	5 400	58.6	74.4	5 600	59.4	73.8	5 800	48.0
52.0	54.4	71.9	4 200	55.3	71.6	4 400	56.1	71.0	4 600	52.0
56.0	51.0	68.8	3 200	51.9	68.5	3 400	52.7	67.9	3 500	56.0
60.0	47.5	65.3	2 400	48.4	65.0	2 500	49.1	64.3	2 600	60.0
64.0				44.6	61.0	1 800	45.3	60.3	1 900	64.0



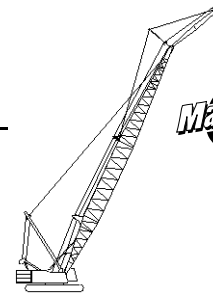
# Liftcrane Jib Capacities

Jib No. 123 With 3 810 mm Strut On  
 Boom No. 82LR  
 67 860 kg Counterweight  
 360 Degree Rating

**Maximum Operating Wind Speeds  
 (all jib lengths)**

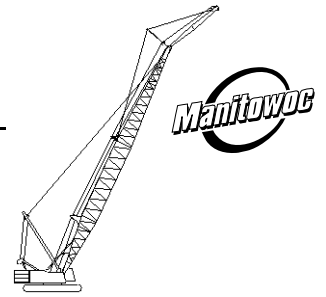
14 m/s with 36.6m thru 54.9m Boom  
 10 m/s with 57.9m thru 73.2m Boom  
 7 m/s with 76.2m and 79.2m Boom

## 999 SERIES 1



### 9.1m (30 Ft.) JIB

Jib Oper. Rad. Meters	0 Degree Offset			10 Degree Offset			20 Degree Offset			Jib Oper. Rad. Meters
	Boom Ang. Deg.	Jib Point Elev. Meters	Jib Capacity Kilograms	Boom Ang. Deg.	Jib Point Elev. Meters	Jib Capacity Kilograms	Boom Ang. Deg.	Jib Point Elev. Meters	Jib Capacity Kilograms	
<b>79.2m (260 Ft.) BOOM</b>										
16.8	80.5	90.0	18 100 *							16.8
18.0	79.7	89.8	18 100 *							18.0
20.0	78.4	89.4	18 100 *	79.4	89.2	18 100*	80.3	88.7	18 100*	20.0
22.0	77.1	89.0	18 100 *	78.0	88.7	18 100*	79.0	88.2	18 100*	22.0
24.0	75.7	88.5	18 100 *	76.7	88.2	18 100*	77.7	87.7	18 100*	24.0
26.0	74.4	87.9	16 700	75.4	87.7	17 100	76.3	87.2	17 600	26.0
28.0	73.1	87.3	14 900	74.0	87.1	15 400	75.0	86.6	15 800	28.0
32.0	70.3	86.0	12 100	71.3	85.7	12 500	72.2	85.2	12 800	32.0
36.0	67.6	84.4	9 800	68.5	84.2	10 100	69.4	83.6	10 500	36.0
40.0	64.7	82.6	8 000	65.7	82.4	8 300	66.6	81.8	8 500	40.0
44.0	61.8	80.5	6 500	62.8	80.3	6 700	63.6	79.7	7 000	44.0
48.0	58.9	78.2	5 100	59.8	78.0	5 300	60.6	77.4	5 500	48.0
52.0	55.8	75.6	3 900	56.7	75.4	4 100	57.5	74.8	4 300	52.0
56.0	52.6	72.7	2 900	53.5	72.4	3 100	54.3	71.8	3 300	56.0
60.0	49.2	69.4	2 100	50.1	69.1	2 200	50.9	68.5	2 400	60.0



# Liftcrane Jib Capacities

Jib No. 123 With 3 810 mm Strut On  
Boom No. 82LR  
67 860 kg Counterweight  
360 Degree Rating

**Maximum Operating Wind Speeds**  
(all jib lengths)

14 m/s with 36.6m thru 54.9m Boom  
10 m/s with 57.9m thru 73.2m Boom  
7 m/s with 76.2m and 79.2m Boom

## 999 SERIES 1

### 12.2m (40 Ft.) JIB

Jib Oper. Rad. Meters	0 Degree Offset			10 Degree Offset			20 Degree Offset			Jib Oper. Rad. Meters
	Boom Ang. Deg.	Jib Point Elev. Meters	Jib Capacity Kilograms	Boom Ang. Deg.	Jib Point Elev. Meters	Jib Capacity Kilograms	Boom Ang. Deg.	Jib Point Elev. Meters	Jib Capacity Kilograms	
<b>36.6m (120 Ft.) BOOM</b>										
10.7	80.3	50.9	13 600 *							10.7
12.0	78.8	50.6	13 600 *							12.0
14.0	76.4	50.1	13 600 *	78.7	49.8	13 600*				14.0
16.0	73.9	49.5	13 600 *	76.3	49.3	13 600*	78.6	48.7	13 600*	16.0
18.0	71.5	48.9	13 600 *	73.8	48.6	13 600*	76.1	48.0	13 600*	18.0
20.0	69.0	48.1	13 600 *	71.3	47.8	13 600*	73.6	47.2	13 600*	20.0
22.0	66.5	47.3	13 600 *	68.8	47.0	13 600*	71.0	46.4	13 600*	22.0
24.0	63.9	46.3	13 600 *	66.2	46.0	13 600*	68.4	45.4	13 400*	24.0
26.0	61.2	45.2	13 600 *	63.5	44.9	13 600*	65.7	44.3	12 900*	26.0
28.0	58.5	44.0	13 600 *	60.8	43.7	13 600*	62.9	43.0	12 300*	28.0
32.0	52.8	41.2	13 600 *	55.0	40.8	13 600*	57.0	40.1	11 300*	32.0
36.0	46.6	37.6	13 500	48.8	37.3	12 400*	50.6	36.5	10 500*	36.0
40.0	39.6	33.2	11 700	41.7	32.8	11 400*	43.4	31.9	9 900*	40.0
44.0	31.4	27.4	10 000	33.4	26.9	10 100				44.0
<b>39.6m (130 Ft.) BOOM</b>										
10.7	80.9	54.0	13 600 *							10.7
12.0	79.4	53.7	13 600 *							12.0
14.0	77.2	53.3	13 600 *	79.4	53.0	13 600*				14.0
16.0	74.9	52.7	13 600 *	77.1	52.5	13 600*	79.3	51.9	13 600*	16.0
18.0	72.6	52.1	13 600 *	74.8	51.8	13 600*	77.0	51.2	13 600*	18.0
20.0	70.3	51.4	13 600 *	72.5	51.1	13 600*	74.6	50.5	13 600*	20.0
22.0	67.9	50.6	13 600 *	70.1	50.3	13 600*	72.2	49.7	13 600*	22.0
24.0	65.5	49.7	13 600 *	67.7	49.4	13 600*	69.8	48.8	13 600*	24.0
26.0	63.1	48.7	13 600 *	65.2	48.4	13 600*	67.3	47.7	13 200*	26.0
28.0	60.6	47.6	13 600 *	62.7	47.3	13 600*	64.7	46.6	12 600*	28.0
32.0	55.3	45.0	13 600 *	57.4	44.6	13 600*	59.3	43.9	11 700*	32.0
36.0	49.7	41.8	13 400	51.8	41.4	13 000*	53.6	40.7	10 800*	36.0
40.0	43.6	37.9	11 500	45.6	37.5	11 700	47.3	36.6	10 200*	40.0
44.0	36.6	33.0	9 800	38.6	32.5	10 000	40.0	31.5	9 700*	44.0
48.0	28.2	26.4	8 400							48.0



# Liftcrane Jib Capacities

Jib No. 123 With 3 810 mm Strut On  
Boom No. 82LR  
67 860 kg Counterweight  
360 Degree Rating

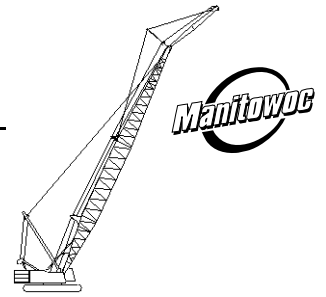
**Maximum Operating Wind Speeds  
(all jib lengths)**

14 m/s with 36.6m thru 54.9m Boom  
10 m/s with 57.9m thru 73.2m Boom  
7 m/s with 76.2m and 79.2m Boom

## 999 SERIES 1

### 12.2m (40 Ft.) JIB

Jib Oper. Rad. Meters	0 Degree Offset			10 Degree Offset			20 Degree Offset			Jib Oper. Rad. Meters
	Boom Ang. Deg.	Jib Point Elev. Meters	Jib Capacity Kilograms	Boom Ang. Deg.	Jib Point Elev. Meters	Jib Capacity Kilograms	Boom Ang. Deg.	Jib Point Elev. Meters	Jib Capacity Kilograms	
<b>42.7m (140 Ft.) BOOM</b>										
12.2	79.8	56.8	13 600 *							12.2
14.0	77.9	56.4	13 600 *	80.0	56.1	13 600*				14.0
16.0	75.8	55.9	13 600 *	77.9	55.6	13 600*	79.9	55.0	13 600*	16.0
18.0	73.6	55.3	13 600 *	75.7	55.0	13 600*	77.7	54.4	13 600*	18.0
20.0	71.4	54.6	13 600 *	73.5	54.4	13 600*	75.5	53.7	13 600*	20.0
22.0	69.2	53.9	13 600 *	71.3	53.6	13 600*	73.3	53.0	13 600*	22.0
24.0	67.0	53.0	13 600 *	69.0	52.8	13 600*	71.0	52.1	13 600*	24.0
26.0	64.7	52.1	13 600 *	66.7	51.8	13 600*	68.7	51.2	13 500*	26.0
28.0	62.3	51.1	13 600 *	64.4	50.8	13 600*	66.3	50.1	13 000*	28.0
32.0	57.5	48.7	13 600 *	59.5	48.3	13 600*	61.3	47.7	12 000*	32.0
36.0	52.4	45.8	13 200	54.4	45.4	13 400	56.1	44.7	11 200*	36.0
40.0	46.9	42.2	11 300	48.8	41.9	11 500	50.4	41.1	10 500*	40.0
44.0	40.8	37.9	9 600	42.6	37.5	9 800	44.1	36.6	9 900	44.0
48.0	33.8	32.5	8 200	35.5	32.0	8 400				48.0
52.0	25.1	25.1	7 100							52.0
<b>45.7m (150 Ft.) BOOM</b>										
12.2	80.3	59.9	13 600 *							12.2
14.0	78.5	59.5	13 600 *	80.6	59.2	13 600*				14.0
16.0	76.5	59.0	13 600 *	78.5	58.8	13 600*				16.0
18.0	74.5	58.5	13 600 *	76.5	58.2	13 600*	78.4	57.6	13 600*	18.0
20.0	72.4	57.9	13 600 *	74.4	57.6	13 600*	76.3	57.0	13 600*	20.0
22.0	70.3	57.2	13 600 *	72.3	56.9	13 600*	74.2	56.2	13 600*	22.0
24.0	68.2	56.4	13 600 *	70.2	56.1	13 600*	72.1	55.4	13 600*	24.0
26.0	66.1	55.5	13 600 *	68.0	55.2	13 600*	69.9	54.5	13 600*	26.0
28.0	63.9	54.5	13 600 *	65.8	54.2	13 600*	67.7	53.6	13 300*	28.0
32.0	59.4	52.3	13 600 *	61.3	52.0	13 600*	63.1	51.3	12 300*	32.0
36.0	54.7	49.6	13 100	56.6	49.3	13 300	58.2	48.5	11 400*	36.0
40.0	49.6	46.4	11 100	51.5	46.0	11 300	53.1	45.2	10 700*	40.0
44.0	44.2	42.5	9 400	46.0	42.1	9 600	47.5	41.3	9 800	44.0
48.0	38.1	37.8	8 000	39.8	37.4	8 200	41.2	36.4	8 300	48.0
52.0	31.0	31.8	6 900	32.6	31.3	7 000				52.0
56.0	21.9	23.5	5 900							56.0



# Liftcrane Jib Capacities

Jib No. 123 With 3 810 mm Strut On  
Boom No. 82LR  
67 860 kg Counterweight  
360 Degree Rating

**Maximum Operating Wind Speeds**  
(all jib lengths)

14 m/s with 36.6m thru 54.9m Boom  
10 m/s with 57.9m thru 73.2m Boom  
7 m/s with 76.2m and 79.2m Boom

## 999 SERIES 1

### 12.2m (40 Ft.) JIB

Jib Oper. Rad. Meters	0 Degree Offset			10 Degree Offset			20 Degree Offset			Jib Oper. Rad. Meters
	Boom Ang. Deg.	Jib Point Elev. Meters	Jib Capacity Kilograms	Boom Ang. Deg.	Jib Point Elev. Meters	Jib Capacity Kilograms	Boom Ang. Deg.	Jib Point Elev. Meters	Jib Capacity Kilograms	
<b>48.8m (160 Ft.) BOOM</b>										
12.2	80.8	63.0	13 600 *							12.2
14.0	79.1	62.6	13 600 *							14.0
16.0	77.2	62.2	13 600 *	79.1	61.9	13 600 *				16.0
18.0	75.3	61.7	13 600 *	77.2	61.4	13 600 *	79.0	60.8	13 600 *	18.0
20.0	73.3	61.1	13 600 *	75.2	60.8	13 600 *	77.0	60.2	13 600 *	20.0
22.0	71.4	60.4	13 600 *	73.2	60.1	13 600 *	75.0	59.5	13 600 *	22.0
24.0	69.4	59.7	13 600 *	71.2	59.4	13 600 *	73.0	58.7	13 600 *	24.0
26.0	67.4	58.8	13 600 *	69.2	58.5	13 600 *	71.0	57.9	13 600 *	26.0
28.0	65.3	57.9	13 600 *	67.1	57.6	13 600 *	68.9	56.9	13 500 *	28.0
32.0	61.1	55.8	13 600 *	62.9	55.5	13 600 *	64.6	54.8	12 600 *	32.0
36.0	56.7	53.3	13 000	58.5	53.0	13 100	60.1	52.3	11 700 *	36.0
40.0	52.0	50.4	10 800	53.8	50.0	11 000	55.4	49.2	11 000	40.0
44.0	47.1	46.9	9 100	48.8	46.5	9 300	50.3	45.6	9 500	44.0
48.0	41.7	42.6	7 700	43.3	42.2	7 900	44.7	41.3	8 000	48.0
52.0	35.6	37.5	6 600	37.2	37.0	6 700				52.0
56.0	28.4	30.9	5 600							56.0
<b>51.8m (170 Ft.) BOOM</b>										
13.7	79.9	65.8	13 600 *							13.7
14.0	79.6	65.7	13 600 *							14.0
16.0	77.8	65.3	13 600 *	79.6	65.0	13 600 *				16.0
18.0	76.0	64.8	13 600 *	77.8	64.5	13 600 *	79.6	63.9	13 600 *	18.0
20.0	74.1	64.3	13 600 *	75.9	64.0	13 600 *	77.7	63.3	13 600 *	20.0
22.0	72.3	63.6	13 600 *	74.1	63.3	13 600 *	75.8	62.7	13 600 *	22.0
24.0	70.4	62.9	13 600 *	72.2	62.6	13 600 *	73.9	62.0	13 600 *	24.0
26.0	68.5	62.1	13 600 *	70.3	61.8	13 600 *	71.9	61.2	13 600 *	26.0
28.0	66.5	61.3	13 600 *	68.3	61.0	13 600 *	70.0	60.3	13 600 *	28.0
32.0	62.6	59.3	13 600 *	64.3	59.0	13 600 *	65.9	58.3	12 800 *	32.0
36.0	58.5	57.0	12 700	60.2	56.6	13 000	61.8	55.9	12 000 *	36.0
40.0	54.2	54.2	10 600	55.8	53.9	10 800	57.3	53.1	11 100	40.0
44.0	49.6	51.0	8 900	51.2	50.6	9 100	52.7	49.8	9 300	44.0
48.0	44.7	47.2	7 500	46.3	46.8	7 700	47.6	45.9	7 800	48.0
52.0	39.3	42.6	6 300	40.8	42.2	6 500	42.0	41.2	6 600	52.0
56.0	33.1	37.0	5 400	34.6	36.5	5 500				56.0
60.0	25.7	29.6	4 500							60.0



# Liftcrane Jib Capacities

Jib No. 123 With 3 810 mm Strut On  
Boom No. 82LR  
67 860 kg Counterweight  
360 Degree Rating

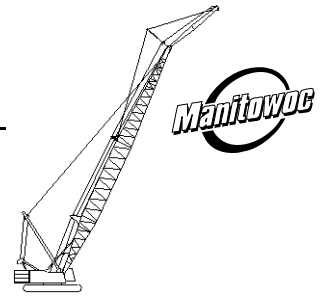
**Maximum Operating Wind Speeds  
(all jib lengths)**

14 m/s with 36.6m thru 54.9m Boom  
10 m/s with 57.9m thru 73.2m Boom  
7 m/s with 76.2m and 79.2m Boom

## 999 SERIES 1

### 12.2m (40 Ft.) JIB

Jib Oper. Rad. Meters	0 Degree Offset			10 Degree Offset			20 Degree Offset			Jib Oper. Rad. Meters
	Boom Ang. Deg.	Jib Point Elev. Meters	Jib Capacity Kilograms	Boom Ang. Deg.	Jib Point Elev. Meters	Jib Capacity Kilograms	Boom Ang. Deg.	Jib Point Elev. Meters	Jib Capacity Kilograms	
<b>54.9m (180 Ft.) BOOM</b>										
13.7	80.4	68.9	13 600 *							13.7
14.0	80.1	68.8	13 600 *							14.0
16.0	78.4	68.4	13 600 *	80.1	68.2	13 600 *				16.0
18.0	76.6	68.0	13 600 *	78.4	67.7	13 600 *				18.0
20.0	74.9	67.4	13 600 *	76.6	67.1	13 600 *	78.3	66.5	13 600 *	20.0
22.0	73.1	66.8	13 600 *	74.8	66.5	13 600 *	76.5	65.9	13 600 *	22.0
24.0	71.3	66.2	13 600 *	73.0	65.9	13 600 *	74.7	65.2	13 600 *	24.0
26.0	69.5	65.4	13 600 *	71.2	65.1	13 600 *	72.8	64.5	13 600 *	26.0
28.0	67.7	64.6	13 600 *	69.4	64.3	13 600 *	71.0	63.6	13 600 *	28.0
32.0	63.9	62.7	13 600 *	65.6	62.4	13 600 *	67.2	61.7	13 100 *	32.0
36.0	60.1	60.5	12 500	61.7	60.2	12 900	63.2	59.5	12 200 *	36.0
40.0	56.0	58.0	10 400	57.6	57.6	10 600	59.1	56.9	10 900	40.0
44.0	51.8	55.0	8 700	53.4	54.6	8 900	54.8	53.8	9 100	44.0
48.0	47.3	51.5	7 300	48.8	51.1	7 500	50.1	50.2	7 600	48.0
52.0	42.4	47.3	6 100	43.9	46.9	6 300	45.1	46.0	6 400	52.0
56.0	37.0	42.4	5 200	38.4	41.9	5 300				56.0
60.0	30.8	36.2	4 300	32.1	35.7	4 400				60.0
64.0	23.0	28.1	3 600							64.0
<b>57.9m (190 Ft.) BOOM</b>										
13.7	80.8	72.0	13 600 *							13.7
14.0	80.5	71.9	13 600 *							14.0
16.0	78.9	71.6	13 600 *							16.0
18.0	77.2	71.1	13 600 *	78.9	70.8	13 600 *				18.0
20.0	75.5	70.6	13 600 *	77.2	70.3	13 600 *	78.8	69.7	13 600 *	20.0
22.0	73.9	70.0	13 600 *	75.5	69.7	13 600 *	77.1	69.1	13 600 *	22.0
24.0	72.2	69.4	13 600 *	73.8	69.1	13 600 *	75.4	68.4	13 600 *	24.0
26.0	70.4	68.7	13 600 *	72.1	68.4	13 600 *	73.6	67.7	13 600 *	26.0
28.0	68.7	67.9	13 600 *	70.3	67.6	13 600 *	71.8	66.9	13 600 *	28.0
32.0	65.1	66.1	13 600 *	66.7	65.8	13 600 *	68.2	65.1	13 400 *	32.0
36.0	61.5	64.1	12 300	63.1	63.7	12 600	64.5	63.0	12 500 *	36.0
40.0	57.7	61.6	10 200	59.2	61.3	10 400	60.7	60.6	10 700	40.0
44.0	53.7	58.8	8 500	55.3	58.5	8 700	56.6	57.7	8 900	44.0
48.0	49.5	55.6	7 100	51.0	55.2	7 300	52.3	54.4	7 500	48.0
52.0	45.1	51.8	5 900	46.5	51.4	6 100	47.8	50.5	6 200	52.0
56.0	40.2	47.3	4 900	41.6	46.9	5 100	42.7	45.9	5 200	56.0
60.0	34.8	42.0	4 100	36.1	41.5	4 200				60.0
64.0	28.4	35.3	3 400	29.7	34.7	3 400				64.0



# Liftcrane Jib Capacities

Jib No. 123 With 3 810 mm Strut On  
Boom No. 82LR  
67 860 kg Counterweight  
360 Degree Rating

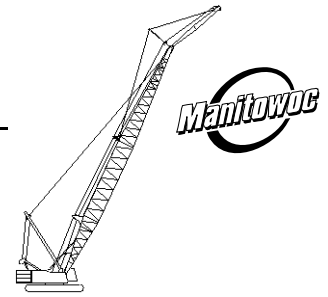
**Maximum Operating Wind Speeds  
(all jib lengths)**

14 m/s with 36.6m thru 54.9m Boom  
10 m/s with 57.9m thru 73.2m Boom  
7 m/s with 76.2m and 79.2m Boom

## 999 SERIES 1

### 12.2m (40 Ft.) JIB

Jib Oper. Rad. Meters	0 Degree Offset			10 Degree Offset			20 Degree Offset			Jib Oper. Rad. Meters
	Boom Ang. Deg.	Jib Point Elev. Meters	Jib Capacity Kilograms	Boom Ang. Deg.	Jib Point Elev. Meters	Jib Capacity Kilograms	Boom Ang. Deg.	Jib Point Elev. Meters	Jib Capacity Kilograms	
<b>61.0m (200 Ft.) BOOM</b>										
15.2	80.0	74.8	13 600 *							15.2
16.0	79.4	74.7	13 600 *							16.0
18.0	77.8	74.2	13 600 *	79.4	73.9	13 600*				18.0
20.0	76.2	73.7	13 600 *	77.7	73.5	13 600*	79.3	72.8	13 600*	20.0
22.0	74.5	73.2	13 600 *	76.1	72.9	13 600*	77.6	72.3	13 600*	22.0
24.0	72.9	72.6	13 600 *	74.5	72.3	13 600*	76.0	71.6	13 600*	24.0
26.0	71.3	71.9	13 600 *	72.8	71.6	13 600*	74.3	71.0	13 600*	26.0
28.0	69.6	71.2	13 600 *	71.2	70.9	13 600*	72.6	70.2	13 600*	28.0
32.0	66.2	69.5	13 600 *	67.8	69.2	13 600*	69.2	68.5	13 600*	32.0
36.0	62.8	67.5	11 900	64.3	67.2	12 300	65.7	66.5	12 600	36.0
40.0	59.2	65.2	9 800	60.7	64.9	10 200	62.1	64.2	10 400	40.0
44.0	55.5	62.6	8 100	56.9	62.3	8 400	58.3	61.5	8 600	44.0
48.0	51.5	59.6	6 700	53.0	59.2	7 000	54.3	58.4	7 200	48.0
52.0	47.4	56.1	5 600	48.8	55.7	5 800	50.0	54.8	5 900	52.0
56.0	43.0	52.0	4 600	44.4	51.6	4 800	45.5	50.6	4 900	56.0
60.0	38.1	47.2	3 800	39.5	46.7	3 900				60.0
64.0	32.6	41.4	3 000	33.9	40.9	3 100				64.0
68.0	26.1	34.1	2 400							68.0
<b>64.0m (210 Ft.) BOOM</b>										
15.2	80.4	77.9	13 600 *							15.2
16.0	79.8	77.8	13 600 *							16.0
18.0	78.3	77.4	13 600 *	79.8	77.1	13 600*				18.0
20.0	76.7	76.9	13 600 *	78.2	76.6	13 600*	79.7	76.0	13 600*	20.0
22.0	75.2	76.4	13 600 *	76.7	76.1	13 600*	78.2	75.4	13 600*	22.0
24.0	73.6	75.8	13 600 *	75.1	75.5	13 600*	76.6	74.8	13 600*	24.0
26.0	72.0	75.1	13 600 *	73.6	74.8	13 600*	75.0	74.2	13 600*	26.0
28.0	70.5	74.4	13 600 *	72.0	74.1	13 600*	73.4	73.5	13 600*	28.0
32.0	67.2	72.8	13 600 *	68.7	72.5	13 600*	70.1	71.8	13 600*	32.0
36.0	63.9	71.0	11 700	65.4	70.6	12 100	66.8	69.9	12 500	36.0
40.0	60.5	68.8	9 600	62.0	68.5	9 900	63.3	67.7	10 200	40.0
44.0	57.0	66.3	7 900	58.5	66.0	8 200	59.7	65.2	8 400	44.0
48.0	53.4	63.5	6 500	54.8	63.1	6 700	56.0	62.3	7 000	48.0
52.0	49.5	60.2	5 300	50.9	59.8	5 600	52.1	59.0	5 700	52.0
56.0	45.4	56.4	4 400	46.7	56.0	4 500	47.9	55.1	4 700	56.0
60.0	41.0	52.1	3 500	42.3	51.6	3 700	43.3	50.6	3 800	60.0
64.0	36.1	46.9	2 800	37.4	46.4	2 900				64.0
68.0	30.5	40.7	2 200	31.7	40.1	2 300				68.0



# Liftcrane Jib Capacities

Jib No. 123 With 3 810 mm Strut On  
Boom No. 82LR  
67 860 kg Counterweight  
360 Degree Rating

**Maximum Operating Wind Speeds  
(all jib lengths)**

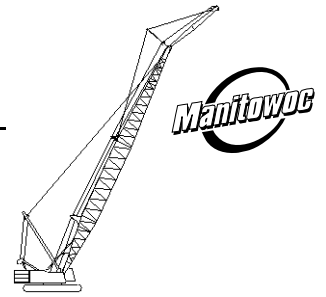
14 m/s with 36.6m thru 54.9m Boom  
10 m/s with 57.9m thru 73.2m Boom  
7 m/s with 76.2m and 79.2m Boom

## 999 SERIES 1

### 12.2m (40 Ft.) JIB

Jib Oper. Rad. Meters	0 Degree Offset			10 Degree Offset			20 Degree Offset			Jib Oper. Rad. Meters
	Boom Ang. Deg.	Jib Point Elev. Meters	Jib Capacity Kilograms	Boom Ang. Deg.	Jib Point Elev. Meters	Jib Capacity Kilograms	Boom Ang. Deg.	Jib Point Elev. Meters	Jib Capacity Kilograms	
<b>67.1m (220 Ft.) BOOM</b>										
15.2	80.7	81.0	13 600 *							15.2
16.0	80.2	80.9	13 600 *							16.0
18.0	78.7	80.5	13 600 *							18.0
20.0	77.2	80.0	13 600 *	78.7	79.7	13 600*	80.1	79.1	13 600*	20.0
22.0	75.8	79.5	13 600 *	77.2	79.2	13 600*	78.6	78.6	13 600*	22.0
24.0	74.3	79.0	13 600 *	75.7	78.7	13 600*	77.1	78.0	13 600*	24.0
26.0	72.8	78.3	13 600 *	74.2	78.0	13 600*	75.6	77.4	13 600*	26.0
28.0	71.2	77.7	13 600 *	72.7	77.4	13 600*	74.1	76.7	13 600*	28.0
32.0	68.2	76.1	13 600 *	69.6	75.8	13 600*	70.9	75.1	13 600*	32.0
36.0	65.0	74.4	11 500	66.4	74.0	11 800	67.7	73.3	12 200	36.0
40.0	61.8	72.3	9 400	63.2	72.0	9 700	64.5	71.2	10 000	40.0
44.0	58.4	69.9	7 700	59.8	69.6	8 000	61.1	68.9	8 200	44.0
48.0	55.0	67.2	6 300	56.3	66.9	6 500	57.5	66.1	6 700	48.0
52.0	51.4	64.2	5 100	52.7	63.8	5 300	53.9	63.0	5 500	52.0
56.0	47.5	60.7	4 100	48.9	60.3	4 300	50.0	59.4	4 500	56.0
60.0	43.5	56.7	3 300	44.7	56.2	3 400	45.8	55.3	3 500	60.0
64.0	39.0	52.0	2 500	40.3	51.5	2 700	41.2	50.5	2 800	64.0
68.0	34.1	46.5	1 900	35.3	45.9	2 000				68.0
<b>70.1m (230 Ft.) BOOM</b>										
16.8	80.0	83.8	13 600 *							16.8
18.0	79.1	83.6	13 600 *							18.0
20.0	77.7	83.2	13 600 *	79.1	82.9	13 600*	80.5	82.2	13 600*	20.0
22.0	76.3	82.7	13 600 *	77.7	82.4	13 600*	79.1	81.7	13 600*	22.0
24.0	74.9	82.1	13 600 *	76.3	81.8	13 600*	77.6	81.2	13 600*	24.0
26.0	73.4	81.5	13 600 *	74.8	81.2	13 600*	76.2	80.6	13 600*	26.0
28.0	72.0	80.9	13 600 *	73.4	80.6	13 600*	74.7	79.9	13 600*	28.0
32.0	69.0	79.4	13 400	70.4	79.1	13 600*	71.7	78.4	13 600*	32.0
36.0	66.0	77.7	11 100	67.4	77.4	11 500	68.6	76.7	11 900	36.0
40.0	62.9	75.8	9 100	64.3	75.4	9 500	65.5	74.7	9 800	40.0
44.0	59.7	73.5	7 400	61.1	73.2	7 700	62.3	72.4	8 000	44.0
48.0	56.5	71.0	6 000	57.8	70.6	6 300	59.0	69.8	6 500	48.0
52.0	53.0	68.1	4 800	54.3	67.7	5 100	55.5	66.9	5 300	52.0
56.0	49.5	64.8	3 900	50.7	64.4	4 100	51.8	63.6	4 300	56.0
60.0	45.7	61.0	3 000	46.9	60.6	3 200	48.0	59.7	3 400	60.0
64.0	41.6	56.8	2 300	42.8	56.3	2 400	43.8	55.3	2 600	64.0





# Liftcrane Jib Capacities

Jib No. 123 With 3 810 mm Strut On  
Boom No. 82LR  
67 860 kg Counterweight  
360 Degree Rating

**Maximum Operating Wind Speeds**  
(all jib lengths)

14 m/s with 36.6m thru 54.9m Boom  
10 m/s with 57.9m thru 73.2m Boom  
7 m/s with 76.2m and 79.2m Boom

## 999 SERIES 1

### 12.2m (40 Ft.) JIB

Jib Oper. Rad. Meters	0 Degree Offset			10 Degree Offset			20 Degree Offset			Jib Oper. Rad. Meters
	Boom Ang. Deg.	Jib Point Elev. Meters	Jib Capacity Kilograms	Boom Ang. Deg.	Jib Point Elev. Meters	Jib Capacity Kilograms	Boom Ang. Deg.	Jib Point Elev. Meters	Jib Capacity Kilograms	
<b>73.2m (240 Ft.) BOOM</b>										
16.8	80.4	86.9	13 600 *							16.8
18.0	79.5	86.7	13 600 *							18.0
20.0	78.2	86.3	13 600 *	79.5	86.0	13 600*	80.9	85.3	13 600*	20.0
22.0	76.8	85.8	13 600 *	78.2	85.5	13 600*	79.5	84.9	13 600*	22.0
24.0	75.4	85.3	13 600 *	76.8	85.0	13 600*	78.1	84.3	13 600*	24.0
26.0	74.0	84.7	13 600 *	75.4	84.4	13 600*	76.7	83.8	13 600*	26.0
28.0	72.6	84.1	13 600 *	74.0	83.8	13 600*	75.3	83.1	13 600*	28.0
32.0	69.8	82.7	12 900	71.1	82.4	13 400	72.4	81.7	13 600*	32.0
36.0	66.9	81.1	10 600	68.2	80.7	11 000	69.5	80.0	11 400	36.0
40.0	64.0	79.2	8 800	65.3	78.9	9 100	66.5	78.1	9 400	40.0
44.0	60.9	77.0	7 100	62.2	76.7	7 400	63.4	76.0	7 700	44.0
48.0	57.8	74.6	5 700	59.1	74.3	6 000	60.2	73.5	6 300	48.0
52.0	54.6	71.9	4 600	55.8	71.5	4 800	56.9	70.7	5 000	52.0
56.0	51.2	68.8	3 600	52.4	68.4	3 800	53.5	67.6	4 000	56.0
60.0	47.6	65.3	2 700	48.9	64.9	2 900	49.9	64.0	3 100	60.0
64.0	43.9	61.3	2 000	45.1	60.9	2 100	46.0	59.9	2 300	64.0
<b>76.2m (250 Ft.) BOOM</b>										
16.8	80.7	90.0	13 600 *							16.8
18.0	79.9	89.8	13 600 *							18.0
20.0	78.6	89.4	13 600 *	79.9	89.1	13 600*				20.0
22.0	77.3	88.9	13 600 *	78.6	88.6	13 600*	79.8	88.0	13 600*	22.0
24.0	75.9	88.5	13 600 *	77.2	88.1	13 600*	78.5	87.5	13 600*	24.0
26.0	74.6	87.9	13 600 *	75.9	87.6	13 600*	77.1	86.9	13 600*	26.0
28.0	73.2	87.3	13 600 *	74.5	87.0	13 600*	75.8	86.3	13 600*	28.0
32.0	70.5	86.0	12 500	71.8	85.6	13 000	73.0	85.0	13 500	32.0
36.0	67.7	84.4	10 200	69.0	84.1	10 600	70.2	83.4	11 000	36.0
40.0	64.9	82.6	8 400	66.2	82.3	8 800	67.4	81.5	9 100	40.0
44.0	62.0	80.5	6 900	63.3	80.2	7 200	64.4	79.5	7 500	44.0
48.0	59.0	78.2	5 500	60.3	77.9	5 800	61.4	77.1	6 000	48.0
52.0	56.0	75.6	4 300	57.2	75.3	4 600	58.3	74.5	4 800	52.0
56.0	52.8	72.7	3 300	54.0	72.3	3 500	55.0	71.5	3 700	56.0
60.0	49.4	69.4	2 500	50.6	69.0	2 600	51.6	68.1	2 800	60.0
64.0				47.1	65.3	1 900	48.0	64.4	2 000	64.0



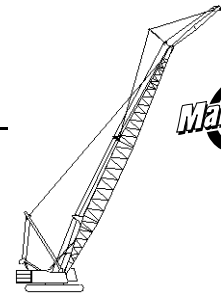
# Liftcrane Jib Capacities

Jib No. 123 With 3 810 mm Strut On  
Boom No. 82LR  
67 860 kg Counterweight  
360 Degree Rating

**Maximum Operating Wind Speeds  
(all jib lengths)**

14 m/s with 36.6m thru 54.9m Boom  
10 m/s with 57.9m thru 73.2m Boom  
7 m/s with 76.2m and 79.2m Boom

## 999 SERIES 1



### 12.2m (40 Ft.) JIB

Jib Oper. Rad. Meters	0 Degree Offset			10 Degree Offset			20 Degree Offset			Jib Oper. Rad. Meters
	Boom Ang. Deg.	Jib Point Elev. Meters	Jib Capacity Kilograms	Boom Ang. Deg.	Jib Point Elev. Meters	Jib Capacity Kilograms	Boom Ang. Deg.	Jib Point Elev. Meters	Jib Capacity Kilograms	
<b>79.2m (260 Ft.) BOOM</b>										
16.8	81.0	93.1	13 600 *							16.8
18.0	80.2	92.9	13 600 *							18.0
20.0	79.0	92.5	13 600 *	80.2	92.2	13 600*				20.0
22.0	77.7	92.1	13 600 *	79.0	91.8	13 600*	80.2	91.1	13 600*	22.0
24.0	76.4	91.6	13 600 *	77.7	91.3	13 600*	78.9	90.6	13 600*	24.0
26.0	75.1	91.1	13 600 *	76.4	90.8	13 600*	77.6	90.1	13 600*	26.0
28.0	73.8	90.5	13 600 *	75.1	90.2	13 600*	76.3	89.5	13 600*	28.0
32.0	71.2	89.2	12 100	72.4	88.9	12 600	73.6	88.2	13 100	32.0
36.0	68.5	87.7	9 900	69.8	87.4	10 300	70.9	86.7	10 700	36.0
40.0	65.8	85.9	8 000	67.0	85.6	8 400	68.2	84.9	8 800	40.0
44.0	63.0	84.0	6 500	64.2	83.7	6 800	65.4	82.9	7 100	44.0
48.0	60.2	81.8	5 200	61.4	81.4	5 500	62.5	80.7	5 800	48.0
52.0	57.2	79.3	4 000	58.4	78.9	4 300	59.5	78.2	4 600	52.0
56.0	54.2	76.5	3 000	55.4	76.1	3 300	56.4	75.3	3 500	56.0
60.0	51.0	73.4	2 200	52.2	73.0	2 400	53.2	72.2	2 600	60.0
64.0							49.8	68.6	1 800	64.0



# Liftcrane Jib Capacities

Jib No. 123 With 3 810 mm Strut On  
Boom No. 82LR  
67 860 kg Counterweight  
360 Degree Rating

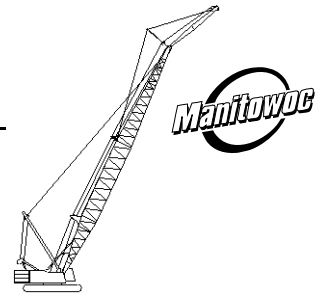
**Maximum Operating Wind Speeds  
(all jib lengths)**

14 m/s with 36.6m thru 54.9m Boom  
10 m/s with 57.9m thru 73.2m Boom  
7 m/s with 76.2m and 79.2m Boom

## 999 SERIES 1

### 15.2m (50 Ft.) JIB

Jib Oper. Rad. Meters	0 Degree Offset			10 Degree Offset			20 Degree Offset			Jib Oper. Rad. Meters
	Boom Ang. Deg.	Jib Point Elev. Meters	Jib Capacity Kilograms	Boom Ang. Deg.	Jib Point Elev. Meters	Jib Capacity Kilograms	Boom Ang. Deg.	Jib Point Elev. Meters	Jib Capacity Kilograms	
<b>36.6m (120 Ft.) BOOM</b>										
12.2	79.6	53.7	9 000 *							12.2
14.0	77.6	53.3	9 000 *	80.4	53.0	9 000*				14.0
16.0	75.3	52.8	9 000 *	78.1	52.5	9 000*				16.0
18.0	73.0	52.2	9 000 *	75.8	51.9	9 000*	78.6	51.2	9 000*	18.0
20.0	70.7	51.5	9 000 *	73.5	51.2	9 000*	76.2	50.5	9 000*	20.0
22.0	68.3	50.7	9 000 *	71.1	50.4	9 000*	73.8	49.7	9 000*	22.0
24.0	65.9	49.8	9 000 *	68.7	49.5	9 000*	71.3	48.8	9 000*	24.0
26.0	63.5	48.8	9 000 *	66.2	48.5	9 000*	68.8	47.8	9 000*	26.0
28.0	61.0	47.7	9 000 *	63.7	47.4	9 000*	66.3	46.7	9 000*	28.0
32.0	55.8	45.2	9 000 *	58.5	44.8	9 000*	60.9	44.0	9 000*	32.0
36.0	50.2	42.0	9 000 *	52.8	41.7	9 000*	55.2	40.8	8 900*	36.0
40.0	44.1	38.2	9 000 *	46.7	37.8	9 000*	48.9	36.8	8 200*	40.0
44.0	37.2	33.4	9 000 *	39.7	32.9	8 900*	41.7	31.8	7 800*	44.0
48.0	29.0	27.0	8 800	31.3	26.4	8 300*				48.0
<b>39.6m (130 Ft.) BOOM</b>										
12.2	80.2	56.8	9 000 *							12.2
14.0	78.3	56.5	9 000 *							14.0
16.0	76.1	56.0	9 000 *	78.8	55.7	9 000*				16.0
18.0	74.0	55.4	9 000 *	76.6	55.1	9 000*	79.2	54.4	9 000*	18.0
20.0	71.8	54.7	9 000 *	74.4	54.4	9 000*	77.0	53.7	9 000*	20.0
22.0	69.6	54.0	9 000 *	72.2	53.7	9 000*	74.7	53.0	9 000*	22.0
24.0	67.3	53.2	9 000 *	70.0	52.9	9 000*	72.5	52.1	9 000*	24.0
26.0	65.1	52.2	9 000 *	67.7	51.9	9 000*	70.1	51.2	9 000*	26.0
28.0	62.7	51.2	9 000 *	65.3	50.9	9 000*	67.8	50.2	9 000*	28.0
32.0	57.9	48.9	9 000 *	60.5	48.5	9 000*	62.8	47.7	9 000*	32.0
36.0	52.8	46.0	9 000 *	55.3	45.6	9 000*	57.6	44.8	9 000*	36.0
40.0	47.3	42.5	9 000 *	49.8	42.1	9 000*	51.9	41.2	8 500*	40.0
44.0	41.3	38.3	9 000 *	43.7	37.8	9 000*	45.7	36.8	8 000*	44.0
48.0	34.4	32.9	8 700	36.7	32.4	8 700				48.0
52.0	25.9	25.8	7 500							52.0



# Liftcrane Jib Capacities

Jib No. 123 With 3 810 mm Strut On  
Boom No. 82LR  
67 860 kg Counterweight  
360 Degree Rating

**Maximum Operating Wind Speeds  
(all jib lengths)**

14 m/s with 36.6m thru 54.9m Boom  
10 m/s with 57.9m thru 73.2m Boom  
7 m/s with 76.2m and 79.2m Boom

## 999 SERIES 1

### 15.2m (50 Ft.) JIB

Jib Oper. Rad. Meters	0 Degree Offset			10 Degree Offset			20 Degree Offset			Jib Oper. Rad. Meters
	Boom Ang. Deg.	Jib Point Elev. Meters	Jib Capacity Kilograms	Boom Ang. Deg.	Jib Point Elev. Meters	Jib Capacity Kilograms	Boom Ang. Deg.	Jib Point Elev. Meters	Jib Capacity Kilograms	
<b>42.7m (140 Ft.) BOOM</b>										
12.2	80.7	59.9	9 000 *							12.2
14.0	78.9	59.6	9 000 *							14.0
16.0	76.9	59.1	9 000 *	79.4	58.8	9 000*				16.0
18.0	74.8	58.6	9 000 *	77.3	58.3	9 000*				18.0
20.0	72.8	58.0	9 000 *	75.3	57.6	9 000*	77.7	56.9	9 000*	20.0
22.0	70.7	57.3	9 000 *	73.2	56.9	9 000*	75.6	56.2	9 000*	22.0
24.0	68.6	56.5	9 000 *	71.1	56.2	9 000*	73.5	55.4	9 000*	24.0
26.0	66.5	55.6	9 000 *	68.9	55.3	9 000*	71.3	54.6	9 000*	26.0
28.0	64.3	54.7	9 000 *	66.7	54.3	9 000*	69.1	53.6	9 000*	28.0
32.0	59.8	52.5	9 000 *	62.2	52.1	9 000*	64.5	51.3	9 000*	32.0
36.0	55.1	49.8	9 000 *	57.5	49.4	9 000*	59.6	48.6	9 000*	36.0
40.0	50.1	46.6	9 000 *	52.4	46.2	9 000*	54.5	45.4	8 700*	40.0
44.0	44.7	42.8	9 000 *	46.9	42.4	9 000*	48.9	41.4	8 200*	44.0
48.0	38.6	38.2	8 500	40.9	37.7	8 700	42.6	36.6	7 800*	48.0
52.0	31.6	32.3	7 300	33.8	31.7	7 400				52.0
56.0	22.8	24.2	6 300							56.0
<b>45.7m (150 Ft.) BOOM</b>										
13.7	79.7	62.7	9 000 *							13.7
14.0	79.4	62.7	9 000 *							14.0
16.0	77.5	62.3	9 000 *	79.9	61.9	9 000*				16.0
18.0	75.6	61.7	9 000 *	78.0	61.4	9 000*				18.0
20.0	73.7	61.2	9 000 *	76.0	60.8	9 000*	78.4	60.1	9 000*	20.0
22.0	71.7	60.5	9 000 *	74.1	60.2	9 000*	76.4	59.5	9 000*	22.0
24.0	69.7	59.8	9 000 *	72.1	59.4	9 000*	74.3	58.7	9 000*	24.0
26.0	67.7	58.9	9 000 *	70.0	58.6	9 000*	72.3	57.9	9 000*	26.0
28.0	65.7	58.0	9 000 *	68.0	57.7	9 000*	70.2	57.0	9 000*	28.0
32.0	61.4	56.0	9 000 *	63.8	55.6	9 000*	65.9	54.9	9 000*	32.0
36.0	57.1	53.5	9 000 *	59.3	53.2	9 000*	61.4	52.3	9 000*	36.0
40.0	52.4	50.6	9 000 *	54.7	50.2	9 000*	56.7	49.3	9 000*	40.0
44.0	47.5	47.1	9 000 *	49.7	46.7	9 000*	51.6	45.8	8 500*	44.0
48.0	42.1	43.0	8 300	44.3	42.5	8 500	46.1	41.5	8 000*	48.0
52.0	36.1	37.9	7 100	38.2	37.4	7 200				52.0
56.0	29.0	31.4	6 100	30.9	30.8	6 200				56.0



# Liftcrane Jib Capacities

Jib No. 123 With 3 810 mm Strut On  
Boom No. 82LR  
67 860 kg Counterweight  
360 Degree Rating

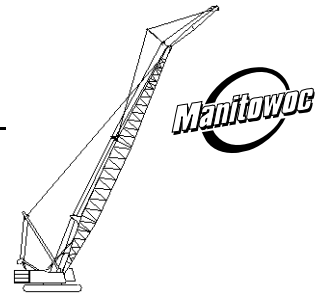
**Maximum Operating Wind Speeds  
(all jib lengths)**

14 m/s with 36.6m thru 54.9m Boom  
10 m/s with 57.9m thru 73.2m Boom  
7 m/s with 76.2m and 79.2m Boom

## 999 SERIES 1

### 15.2m (50 Ft.) JIB

Jib Oper. Rad. Meters	0 Degree Offset			10 Degree Offset			20 Degree Offset			Jib Oper. Rad. Meters
	Boom Ang. Deg.	Jib Point Elev. Meters	Jib Capacity Kilograms	Boom Ang. Deg.	Jib Point Elev. Meters	Jib Capacity Kilograms	Boom Ang. Deg.	Jib Point Elev. Meters	Jib Capacity Kilograms	
<b>48.8m (160 Ft.) BOOM</b>										
13.7	80.2	65.9	9 000 *							13.7
14.0	79.9	65.8	9 000 *							14.0
16.0	78.1	65.4	9 000 *							16.0
18.0	76.3	64.9	9 000 *	78.6	64.6	9 000 *				18.0
20.0	74.5	64.3	9 000 *	76.7	64.0	9 000 *	78.9	63.3	9 000 *	20.0
22.0	72.6	63.7	9 000 *	74.9	63.4	9 000 *	77.1	62.7	9 000 *	22.0
24.0	70.7	63.0	9 000 *	73.0	62.7	9 000 *	75.1	62.0	9 000 *	24.0
26.0	68.8	62.2	9 000 *	71.1	61.9	9 000 *	73.2	61.2	9 000 *	26.0
28.0	66.9	61.4	9 000 *	69.1	61.1	9 000 *	71.2	60.3	9 000 *	28.0
32.0	62.9	59.5	9 000 *	65.1	59.1	9 000 *	67.2	58.3	9 000 *	32.0
36.0	58.8	57.1	9 000 *	61.0	56.8	9 000 *	63.0	56.0	9 000 *	36.0
40.0	54.5	54.4	9 000 *	56.7	54.1	9 000 *	58.6	53.2	9 000 *	40.0
44.0	50.0	51.2	9 000 *	52.1	50.8	9 000 *	53.9	49.9	8 700 *	44.0
48.0	45.1	47.5	8 000	47.2	47.0	8 200	48.9	46.0	8 200	48.0
52.0	39.7	43.0	6 800	41.7	42.5	7 000	43.4	41.4	7 200	52.0
56.0	33.7	37.4	5 800	35.6	36.8	6 000				56.0
60.0	26.4	30.2	5 000							60.0
<b>51.8m (170 Ft.) BOOM</b>										
13.7	80.7	69.0	9 000 *							13.7
14.0	80.4	68.9	9 000 *							14.0
16.0	78.7	68.5	9 000 *							16.0
18.0	76.9	68.0	9 000 *	79.1	67.7	9 000 *				18.0
20.0	75.2	67.5	9 000 *	77.3	67.2	9 000 *	79.5	66.5	9 000 *	20.0
22.0	73.4	66.9	9 000 *	75.6	66.6	9 000 *	77.7	65.9	9 000 *	22.0
24.0	71.6	66.3	9 000 *	73.8	65.9	9 000 *	75.9	65.2	9 000 *	24.0
26.0	69.8	65.5	9 000 *	72.0	65.2	9 000 *	74.0	64.4	9 000 *	26.0
28.0	68.0	64.7	9 000 *	70.1	64.4	9 000 *	72.2	63.6	9 000 *	28.0
32.0	64.2	62.9	9 000 *	66.4	62.5	9 000 *	68.3	61.8	9 000 *	32.0
36.0	60.4	60.7	9 000 *	62.5	60.4	9 000 *	64.4	59.5	9 000 *	36.0
40.0	56.4	58.2	9 000 *	58.4	57.8	9 000 *	60.3	56.9	9 000 *	40.0
44.0	52.1	55.2	9 000 *	54.2	54.8	9 000 *	56.0	53.9	8 900 *	44.0
48.0	47.6	51.7	7 800	49.6	51.3	8 000	51.4	50.3	8 300	48.0
52.0	42.8	47.7	6 600	44.7	47.2	6 800	46.4	46.1	7 000	52.0
56.0	37.4	42.8	5 600	39.3	42.2	5 800	40.8	41.1	5 900	56.0
60.0	31.3	36.7	4 800	33.1	36.1	4 900				60.0
64.0	23.7	28.8	4 000							64.0



# Liftcrane Jib Capacities

Jib No. 123 With 3 810 mm Strut On  
Boom No. 82LR  
67 860 kg Counterweight  
360 Degree Rating

**Maximum Operating Wind Speeds  
(all jib lengths)**

14 m/s with 36.6m thru 54.9m Boom  
10 m/s with 57.9m thru 73.2m Boom  
7 m/s with 76.2m and 79.2m Boom

## 999 SERIES 1

### 15.2m (50 Ft.) JIB

Jib Oper. Rad. Meters	0 Degree Offset			10 Degree Offset			20 Degree Offset			Jib Oper. Rad. Meters
	Boom Ang. Deg.	Jib Point Elev. Meters	Jib Capacity Kilograms	Boom Ang. Deg.	Jib Point Elev. Meters	Jib Capacity Kilograms	Boom Ang. Deg.	Jib Point Elev. Meters	Jib Capacity Kilograms	
<b>54.9m (180 Ft.) BOOM</b>										
15.2	79.8	71.8	9 000 *							15.2
16.0	79.2	71.6	9 000 *							16.0
18.0	77.5	71.2	9 000 *	79.6	70.9	9 000*				18.0
20.0	75.8	70.7	9 000 *	77.9	70.3	9 000*	79.9	69.6	9 000*	20.0
22.0	74.1	70.1	9 000 *	76.2	69.8	9 000*	78.2	69.0	9 000*	22.0
24.0	72.4	69.5	9 000 *	74.5	69.1	9 000*	76.5	68.4	9 000*	24.0
26.0	70.7	68.8	9 000 *	72.8	68.4	9 000*	74.8	67.7	9 000*	26.0
28.0	69.0	68.0	9 000 *	71.0	67.7	9 000*	73.0	66.9	9 000*	28.0
32.0	65.4	66.3	9 000 *	67.5	65.9	9 000*	69.4	65.1	9 000*	32.0
36.0	61.8	64.2	9 000 *	63.8	63.9	9 000*	65.7	63.1	9 000*	36.0
40.0	58.0	61.8	9 000 *	60.0	61.5	9 000*	61.8	60.6	9 000*	40.0
44.0	54.1	59.1	8 900	56.0	58.7	9 000*	57.8	57.8	9 000*	44.0
48.0	49.9	55.8	7 600	51.8	55.4	7 800	53.5	54.5	8 000	48.0
52.0	45.4	52.1	6 400	47.3	51.6	6 600	48.9	50.6	6 800	52.0
56.0	40.6	47.7	5 400	42.4	47.2	5 600	43.9	46.1	5 700	56.0
60.0	35.2	42.4	4 500	37.0	41.9	4 700				60.0
64.0	29.0	35.8	3 800	30.6	35.2	3 900				64.0
68.0	21.1	26.9	3 200							68.0
<b>57.9m (190 Ft.) BOOM</b>										
15.2	80.2	74.9	9 000 *							15.2
16.0	79.6	74.7	9 000 *							16.0
18.0	78.0	74.3	9 000 *	80.0	74.0	9 000*				18.0
20.0	76.4	73.8	9 000 *	78.4	73.5	9 000*	80.4	72.8	9 000*	20.0
22.0	74.8	73.3	9 000 *	76.8	73.0	9 000*	78.7	72.2	9 000*	22.0
24.0	73.2	72.7	9 000 *	75.2	72.3	9 000*	77.1	71.6	9 000*	24.0
26.0	71.6	72.0	9 000 *	73.5	71.7	9 000*	75.4	70.9	9 000*	26.0
28.0	69.9	71.3	9 000 *	71.9	70.9	9 000*	73.7	70.2	9 000*	28.0
32.0	66.5	69.6	9 000 *	68.5	69.3	9 000*	70.3	68.5	9 000*	32.0
36.0	63.1	67.7	9 000 *	65.0	67.3	9 000*	66.8	66.5	9 000*	36.0
40.0	59.5	65.4	9 000 *	61.4	65.1	9 000*	63.2	64.2	9 000*	40.0
44.0	55.8	62.8	8 700	57.7	62.4	9 000*	59.4	61.6	9 000*	44.0
48.0	51.9	59.8	7 400	53.7	59.4	7 600	55.4	58.5	7 900	48.0
52.0	47.8	56.3	6 200	49.6	55.9	6 400	51.2	54.9	6 600	52.0
56.0	43.3	52.3	5 200	45.1	51.8	5 400	46.6	50.8	5 500	56.0
60.0	38.5	47.6	4 300	40.3	47.1	4 500	41.6	45.9	4 600	60.0
64.0	33.1	41.9	3 600	34.8	41.3	3 700				64.0
68.0	26.7	34.7	2 900							68.0



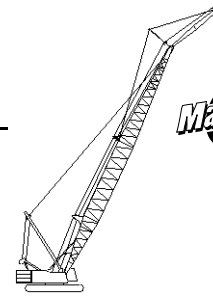
# Liftcrane Jib Capacities

Jib No. 123 With 3 810 mm Strut On  
Boom No. 82LR  
67 860 kg Counterweight  
360 Degree Rating

**Maximum Operating Wind Speeds  
(all jib lengths)**

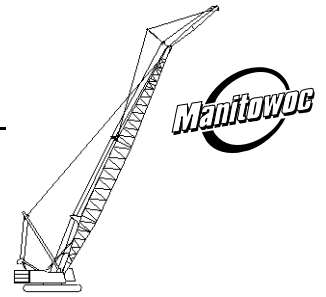
14 m/s with 36.6m thru 54.9m Boom  
10 m/s with 57.9m thru 73.2m Boom  
7 m/s with 76.2m and 79.2m Boom

## 999 SERIES 1



### 15.2m (50 Ft.) JIB

Jib Oper. Rad. Meters	0 Degree Offset			10 Degree Offset			20 Degree Offset			Jib Oper. Rad. Meters
	Boom Ang. Deg.	Jib Point Elev. Meters	Jib Capacity Kilograms	Boom Ang. Deg.	Jib Point Elev. Meters	Jib Capacity Kilograms	Boom Ang. Deg.	Jib Point Elev. Meters	Jib Capacity Kilograms	
<b>61.0m (200 Ft.) BOOM</b>										
15.2	80.6	78.0	9 000 *							15.2
16.0	80.0	77.8	9 000 *							16.0
18.0	78.5	77.4	9 000 *							18.0
20.0	77.0	77.0	9 000 *	78.9	76.6	9 000*	80.8	75.9	9 000*	20.0
22.0	75.4	76.4	9 000 *	77.4	76.1	9 000*	79.2	75.4	9 000*	22.0
24.0	73.9	75.9	9 000 *	75.8	75.5	9 000*	77.6	74.8	9 000*	24.0
26.0	72.3	75.2	9 000 *	74.2	74.9	9 000*	76.0	74.1	9 000*	26.0
28.0	70.7	74.5	9 000 *	72.6	74.2	9 000*	74.4	73.4	9 000*	28.0
32.0	67.5	73.0	9 000 *	69.4	72.6	9 000*	71.2	71.8	9 000*	32.0
36.0	64.2	71.1	9 000 *	66.1	70.7	9 000*	67.8	69.9	9 000*	36.0
40.0	60.8	69.0	9 000 *	62.7	68.6	9 000*	64.4	67.8	9 000*	40.0
44.0	57.3	66.5	8 500	59.1	66.1	8 800	60.8	65.2	9 000*	44.0
48.0	53.7	63.7	7 100	55.5	63.3	7 400	57.1	62.4	7 600	48.0
52.0	49.8	60.4	5 900	51.6	60.0	6 200	53.1	59.1	6 300	52.0
56.0	45.7	56.7	4 900	47.5	56.3	5 100	48.9	55.2	5 300	56.0
60.0	41.3	52.4	4 100	43.0	51.9	4 200	44.4	50.8	4 400	60.0
64.0	36.5	47.3	3 300	38.1	46.8	3 400	39.4	45.5	3 500	64.0
68.0	31.0	41.2	2 600	32.6	40.5	2 800				68.0
72.0	24.4	33.3	2 100							72.0



# Liftcrane Jib Capacities

Jib No. 123 With 3 810 mm Strut On  
Boom No. 82LR  
67 860 kg Counterweight  
360 Degree Rating

**Maximum Operating Wind Speeds  
(all jib lengths)**

14 m/s with 36.6m thru 54.9m Boom  
10 m/s with 57.9m thru 73.2m Boom  
7 m/s with 76.2m and 79.2m Boom

## 999 SERIES 1

### 15.2m (50 Ft.) JIB

Jib Oper. Rad. Meters	0 Degree Offset			10 Degree Offset			20 Degree Offset			Jib Oper. Rad. Meters
	Boom Ang. Deg.	Jib Point Elev. Meters	Jib Capacity Kilograms	Boom Ang. Deg.	Jib Point Elev. Meters	Jib Capacity Kilograms	Boom Ang. Deg.	Jib Point Elev. Meters	Jib Capacity Kilograms	
<b>64.0m (210 Ft.) BOOM</b>										
15.2	81.0	81.1	9 000 *							15.2
16.0	80.4	80.9	9 000 *							16.0
18.0	79.0	80.5	9 000 *							18.0
20.0	77.5	80.1	9 000 *	79.3	79.8	9 000*				20.0
22.0	76.0	79.6	9 000 *	77.9	79.3	9 000*	79.6	78.5	9 000*	22.0
24.0	74.5	79.0	9 000 *	76.4	78.7	9 000*	78.1	78.0	9 000*	24.0
26.0	73.0	78.4	9 000 *	74.8	78.1	9 000*	76.6	77.3	9 000*	26.0
28.0	71.5	77.8	9 000 *	73.3	77.4	9 000*	75.1	76.7	9 000*	28.0
32.0	68.4	76.3	9 000 *	70.2	75.9	9 000*	71.9	75.1	9 000*	32.0
36.0	65.3	74.5	9 000 *	67.1	74.1	9 000*	68.8	73.3	9 000*	36.0
40.0	62.1	72.5	9 000 *	63.8	72.1	9 000*	65.5	71.3	9 000*	40.0
44.0	58.7	70.1	8 300	60.5	69.7	8 600	62.1	68.9	8 900	44.0
48.0	55.3	67.5	6 900	57.0	67.1	7 100	58.6	66.2	7 400	48.0
52.0	51.7	64.4	5 700	53.4	64.0	5 900	54.9	63.1	6 200	52.0
56.0	47.9	60.9	4 700	49.5	60.5	4 900	51.0	59.5	5 100	56.0
60.0	43.8	57.0	3 800	45.4	56.5	4 000	46.8	55.4	4 200	60.0
64.0	39.4	52.3	3 100	41.0	51.8	3 200	42.3	50.7	3 400	64.0
68.0	34.5	46.9	2 400	36.1	46.3	2 600				68.0
72.0				30.4	39.6	1 900				72.0
<b>67.1m (220 Ft.) BOOM</b>										
16.8	80.2	83.9	9 000 *							16.8
18.0	79.4	83.6	9 000 *							18.0
20.0	78.0	83.2	9 000 *	79.7	82.9	9 000*				20.0
22.0	76.5	82.7	9 000 *	78.3	82.4	9 000*	80.0	81.7	9 000*	22.0
24.0	75.1	82.2	9 000 *	76.9	81.9	9 000*	78.6	81.1	9 000*	24.0
26.0	73.7	81.6	9 000 *	75.4	81.3	9 000*	77.1	80.5	9 000*	26.0
28.0	72.2	81.0	9 000 *	74.0	80.7	9 000*	75.7	79.9	9 000*	28.0
32.0	69.3	79.5	9 000 *	71.0	79.2	9 000*	72.7	78.4	9 000*	32.0
36.0	66.3	77.9	9 000 *	68.0	77.5	9 000*	69.6	76.7	9 000*	36.0
40.0	63.2	75.9	9 000 *	64.9	75.5	9 000*	66.5	74.7	9 000*	40.0
44.0	60.0	73.7	8 100	61.7	73.3	8 400	63.3	72.5	8 700	44.0
48.0	56.7	71.2	6 600	58.4	70.8	6 900	59.9	69.9	7 200	48.0
52.0	53.3	68.3	5 400	55.0	67.9	5 700	56.4	67.0	6 000	52.0
56.0	49.8	65.0	4 400	51.4	64.6	4 700	52.8	63.6	4 900	56.0
60.0	46.0	61.3	3 600	47.6	60.9	3 800	48.9	59.8	4 000	60.0
64.0	41.9	57.1	2 900	43.5	56.6	3 000	44.8	55.5	3 200	64.0
68.0	37.5	52.2	2 200	39.1	51.6	2 300	40.2	50.4	2 400	68.0





# Liftcrane Jib Capacities

Jib No. 123 With 3 810 mm Strut On  
Boom No. 82LR  
67 860 kg Counterweight  
360 Degree Rating

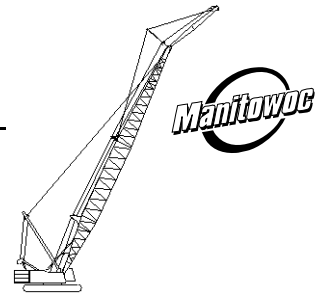
**Maximum Operating Wind Speeds  
(all jib lengths)**

14 m/s with 36.6m thru 54.9m Boom  
10 m/s with 57.9m thru 73.2m Boom  
7 m/s with 76.2m and 79.2m Boom

## 999 SERIES 1

### 15.2m (50 Ft.) JIB

Jib Oper. Rad. Meters	0 Degree Offset			10 Degree Offset			20 Degree Offset			Jib Oper. Rad. Meters
	Boom Ang. Deg.	Jib Point Elev. Meters	Jib Capacity Kilograms	Boom Ang. Deg.	Jib Point Elev. Meters	Jib Capacity Kilograms	Boom Ang. Deg.	Jib Point Elev. Meters	Jib Capacity Kilograms	
<b>70.1m (230 Ft.) BOOM</b>										
16.8	80.6	87.0	9 000 *							16.8
18.0	79.8	86.8	9 000 *							18.0
20.0	78.4	86.3	9 000 *	80.1	86.0	9 000*				20.0
22.0	77.0	85.9	9 000 *	78.7	85.5	9 000*	80.4	84.8	9 000*	22.0
24.0	75.6	85.4	9 000 *	77.4	85.0	9 000*	79.0	84.3	9 000*	24.0
26.0	74.3	84.8	9 000 *	76.0	84.5	9 000*	77.6	83.7	9 000*	26.0
28.0	72.9	84.2	9 000 *	74.6	83.9	9 000*	76.2	83.1	9 000*	28.0
32.0	70.0	82.8	9 000 *	71.7	82.5	9 000*	73.3	81.7	9 000*	32.0
36.0	67.2	81.2	9 000 *	68.8	80.8	9 000*	70.4	80.0	9 000*	36.0
40.0	64.2	79.3	9 000	65.9	79.0	9 000*	67.4	78.1	9 000*	40.0
44.0	61.2	77.2	7 800	62.8	76.8	8 200	64.3	76.0	8 500	44.0
48.0	58.1	74.8	6 400	59.7	74.4	6 700	61.2	73.5	7 000	48.0
52.0	54.8	72.1	5 200	56.4	71.7	5 500	57.9	70.8	5 700	52.0
56.0	51.5	69.0	4 200	53.1	68.6	4 500	54.4	67.6	4 700	56.0
60.0	47.9	65.5	3 300	49.5	65.1	3 500	50.8	64.1	3 800	60.0
64.0	44.2	61.6	2 600	45.7	61.1	2 800	47.0	60.0	2 900	64.0
68.0	40.2	57.1	1 900	41.7	56.6	2 100	42.8	55.4	2 200	68.0
<b>73.2m (240 Ft.) BOOM</b>										
16.8	80.9	90.1	9 000 *							16.8
18.0	80.1	89.9	9 000 *							18.0
20.0	78.8	89.5	9 000 *	80.5	89.1	9 000*				20.0
22.0	77.5	89.0	9 000 *	79.1	88.7	9 000*				22.0
24.0	76.2	88.5	9 000 *	77.8	88.2	9 000*	79.4	87.4	9 000*	24.0
26.0	74.8	88.0	9 000 *	76.5	87.6	9 000*	78.0	86.9	9 000*	26.0
28.0	73.5	87.4	9 000 *	75.1	87.0	9 000*	76.7	86.3	9 000*	28.0
32.0	70.8	86.1	9 000 *	72.4	85.7	9 000*	73.9	84.9	9 000*	32.0
36.0	68.0	84.5	9 000 *	69.6	84.1	9 000*	71.1	83.3	9 000*	36.0
40.0	65.2	82.7	8 900	66.8	82.4	9 000*	68.3	81.5	9 000*	40.0
44.0	62.3	80.7	7 500	63.9	80.3	7 900	65.3	79.5	8 300	44.0
48.0	59.3	78.4	6 100	60.9	78.0	6 500	62.3	77.1	6 800	48.0
52.0	56.2	75.8	4 900	57.8	75.4	5 200	59.2	74.5	5 500	52.0
56.0	53.0	72.9	3 900	54.6	72.5	4 200	55.9	71.5	4 400	56.0
60.0	49.7	69.6	3 100	51.2	69.2	3 300	52.5	68.2	3 500	60.0
64.0	46.2	65.9	2 300	47.7	65.5	2 500	48.9	64.4	2 700	64.0
68.0							45.1	60.1	2 000	68.0



# Liftcrane Jib Capacities

Jib No. 123 With 3 810 mm Strut On  
Boom No. 82LR  
67 860 kg Counterweight  
360 Degree Rating

**Maximum Operating Wind Speeds  
(all jib lengths)**

14 m/s with 36.6m thru 54.9m Boom  
10 m/s with 57.9m thru 73.2m Boom  
7 m/s with 76.2m and 79.2m Boom

## 999 SERIES 1

### 15.2m (50 Ft.) JIB

Jib Oper. Rad. Meters	0 Degree Offset			10 Degree Offset			20 Degree Offset			Jib Oper. Rad. Meters
	Boom Ang. Deg.	Jib Point Elev. Meters	Jib Capacity Kilograms	Boom Ang. Deg.	Jib Point Elev. Meters	Jib Capacity Kilograms	Boom Ang. Deg.	Jib Point Elev. Meters	Jib Capacity Kilograms	
<b>76.2m (250 Ft.) BOOM</b>										
18.3	80.3	92.9	9 000 *							18.3
20.0	79.2	92.6	9 000 *	80.8	92.2	9 000*				20.0
22.0	77.9	92.1	9 000 *	79.5	91.8	9 000*				22.0
24.0	76.6	91.7	9 000 *	78.2	91.3	9 000*	79.8	90.6	9 000*	24.0
26.0	75.3	91.1	9 000 *	76.9	90.8	9 000*	78.5	90.0	9 000*	26.0
28.0	74.0	90.6	9 000 *	75.6	90.2	9 000*	77.1	89.5	9 000*	28.0
32.0	71.4	89.3	9 000 *	73.0	88.9	9 000*	74.5	88.1	9 000*	32.0
36.0	68.8	87.8	9 000 *	70.3	87.4	9 000*	71.8	86.6	9 000*	36.0
40.0	66.0	86.1	8 700	67.6	85.7	8 900	69.0	84.9	9 000*	40.0
44.0	63.3	84.1	7 200	64.8	83.8	7 600	66.2	82.9	8 000	44.0
48.0	60.4	81.9	5 900	61.9	81.6	6 200	63.3	80.7	6 500	48.0
52.0	57.5	79.5	4 700	59.0	79.1	5 000	60.4	78.2	5 300	52.0
56.0	54.5	76.7	3 700	56.0	76.3	3 900	57.3	75.4	4 200	56.0
60.0	51.3	73.6	2 800	52.8	73.2	3 100	54.1	72.2	3 300	60.0
64.0	48.0	70.1	2 000	49.5	69.7	2 300	50.7	68.7	2 400	64.0
<b>79.2m (260 Ft.) BOOM</b>										
18.3	80.6	96.0	9 000 *							18.3
20.0	79.5	95.7	9 000 *							20.0
22.0	78.3	95.3	9 000 *	79.8	94.9	9 000*				22.0
24.0	77.1	94.8	9 000 *	78.6	94.5	9 000*	80.1	93.7	9 000*	24.0
26.0	75.8	94.3	9 000 *	77.4	94.0	9 000*	78.8	93.2	9 000*	26.0
28.0	74.6	93.8	9 000 *	76.1	93.4	9 000*	77.6	92.6	9 000*	28.0
32.0	72.0	92.5	9 000 *	73.6	92.2	9 000*	75.0	91.4	9 000*	32.0
36.0	69.5	91.1	9 000 *	71.0	90.7	9 000*	72.4	89.9	9 000*	36.0
40.0	66.9	89.4	8 300	68.4	89.1	8 900	69.8	88.2	9 000	40.0
44.0	64.2	87.5	6 800	65.7	87.2	7 200	67.1	86.3	7 600	44.0
48.0	61.5	85.4	5 500	62.9	85.1	5 900	64.3	84.2	6 200	48.0
52.0	58.7	83.1	4 400	60.1	82.7	4 800	61.5	81.8	5 100	52.0
56.0	55.8	80.5	3 400	57.2	80.0	3 700	58.5	79.1	4 000	56.0
60.0	52.8	77.5	2 600	54.2	77.1	2 800	55.5	76.1	3 000	60.0
64.0	49.7	74.2	1 800	51.1	73.8	2 000	52.3	72.8	2 300	64.0



# Liftcrane Jib Capacities

Jib No. 123 With 3 810 mm Strut On  
Boom No. 82LR  
67 860 kg Counterweight  
360 Degree Rating

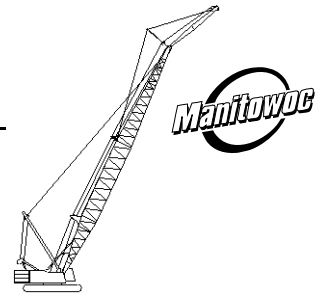
**Maximum Operating Wind Speeds  
(all jib lengths)**

14 m/s with 36.6m thru 54.9m Boom  
10 m/s with 57.9m thru 73.2m Boom  
7 m/s with 76.2m and 79.2m Boom

## 999 SERIES 1

### 18.3m (60 Ft.) JIB

Jib Oper. Rad. Meters	0 Degree Offset			10 Degree Offset			20 Degree Offset			Jib Oper. Rad. Meters
	Boom Ang. Deg.	Jib Point Elev. Meters	Jib Capacity Kilograms	Boom Ang. Deg.	Jib Point Elev. Meters	Jib Capacity Kilograms	Boom Ang. Deg.	Jib Point Elev. Meters	Jib Capacity Kilograms	
<b>36.6m (120 Ft.) BOOM</b>										
12.2	80.0	56.8	4 500 *							12.2
14.0	78.1	56.5	4 500 *							14.0
16.0	76.0	56.0	4 500 *	79.2	55.7	4 500*				16.0
18.0	73.8	55.4	4 500 *	77.0	55.1	4 500*				18.0
20.0	71.6	54.8	4 500 *	74.8	54.5	4 500*	78.0	53.7	4 500*	20.0
22.0	69.4	54.0	4 500 *	72.6	53.7	4 500*	75.7	53.0	4 500*	22.0
24.0	67.2	53.2	4 500 *	70.4	52.9	4 500*	73.4	52.1	4 500*	24.0
26.0	64.9	52.3	4 500 *	68.1	51.9	4 500*	71.1	51.2	4 500*	26.0
28.0	62.6	51.2	4 500 *	65.7	50.9	4 500*	68.7	50.1	4 500*	28.0
32.0	57.8	48.9	4 500 *	60.9	48.5	4 500*	63.8	47.7	4 500*	32.0
36.0	52.7	46.0	4 500 *	55.7	45.6	4 500*	58.6	44.8	4 500*	36.0
40.0	47.2	42.5	4 500 *	50.2	42.1	4 500*	52.9	41.2	4 500*	40.0
44.0	41.1	38.3	4 500 *	44.1	37.9	4 500*	46.6	36.8	4 500*	44.0
48.0	34.2	33.0	4 500 *	37.1	32.5	4 500*				48.0
52.0	25.7	25.8	4 500 *							52.0
<b>39.6m (130 Ft.) BOOM</b>										
12.2	80.5	59.9	4 500 *							12.2
14.0	78.7	59.6	4 500 *							14.0
16.0	76.7	59.1	4 500 *	79.8	58.8	4 500*				16.0
18.0	74.7	58.6	4 500 *	77.7	58.3	4 500*				18.0
20.0	72.6	58.0	4 500 *	75.7	57.7	4 500*	78.6	56.9	4 500*	20.0
22.0	70.5	57.3	4 500 *	73.6	57.0	4 500*	76.5	56.2	4 500*	22.0
24.0	68.4	56.5	4 500 *	71.4	56.2	4 500*	74.4	55.4	4 500*	24.0
26.0	66.3	55.6	4 500 *	69.3	55.3	4 500*	72.2	54.5	4 500*	26.0
28.0	64.1	54.7	4 500 *	67.1	54.4	4 500*	70.0	53.6	4 500*	28.0
32.0	59.6	52.5	4 500 *	62.6	52.1	4 500*	65.4	51.3	4 500*	32.0
36.0	54.9	49.8	4 500 *	57.9	49.5	4 500*	60.6	48.6	4 500*	36.0
40.0	49.9	46.7	4 500 *	52.8	46.3	4 500*	55.4	45.3	4 500*	40.0
44.0	44.5	42.8	4 500 *	47.3	42.4	4 500*	49.8	41.4	4 500*	44.0
48.0	38.5	38.2	4 500 *	41.2	37.7	4 500*	43.5	36.6	4 500*	48.0
52.0	31.5	32.3	4 500 *	34.2	31.8	4 500*				52.0
56.0	22.6	24.2	4 500 *							56.0



# Liftcrane Jib Capacities

Jib No. 123 With 3 810 mm Strut On  
Boom No. 82LR  
67 860 kg Counterweight  
360 Degree Rating

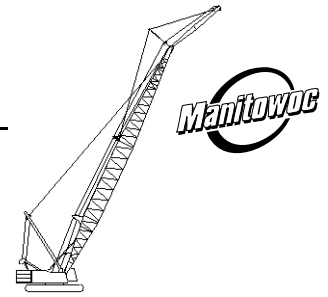
**Maximum Operating Wind Speeds  
(all jib lengths)**

14 m/s with 36.6m thru 54.9m Boom  
10 m/s with 57.9m thru 73.2m Boom  
7 m/s with 76.2m and 79.2m Boom

## 999 SERIES 1

### 18.3m (60 Ft.) JIB

Jib Oper. Rad. Meters	0 Degree Offset			10 Degree Offset			20 Degree Offset			Jib Oper. Rad. Meters
	Boom Ang. Deg.	Jib Point Elev. Meters	Jib Capacity Kilograms	Boom Ang. Deg.	Jib Point Elev. Meters	Jib Capacity Kilograms	Boom Ang. Deg.	Jib Point Elev. Meters	Jib Capacity Kilograms	
<b>42.7m (140 Ft.) BOOM</b>										
12.2	81.0	63.0	4 500 *							12.2
14.0	79.3	62.7	4 500 *							14.0
16.0	77.4	62.3	4 500 *	80.3	62.0	4 500*				16.0
18.0	75.5	61.8	4 500 *	78.4	61.4	4 500*				18.0
20.0	73.5	61.2	4 500 *	76.4	60.9	4 500*	79.2	60.1	4 500*	20.0
22.0	71.6	60.5	4 500 *	74.4	60.2	4 500*	77.2	59.4	4 500*	22.0
24.0	69.6	59.8	4 500 *	72.4	59.5	4 500*	75.2	58.7	4 500*	24.0
26.0	67.6	59.0	4 500 *	70.4	58.6	4 500*	73.2	57.9	4 500*	26.0
28.0	65.5	58.1	4 500 *	68.3	57.7	4 500*	71.1	56.9	4 500*	28.0
32.0	61.3	56.0	4 500 *	64.1	55.7	4 500*	66.8	54.8	4 500*	32.0
36.0	56.9	53.5	4 500 *	59.7	53.2	4 500*	62.3	52.3	4 500*	36.0
40.0	52.3	50.6	4 500 *	55.1	50.2	4 500*	57.6	49.3	4 500*	40.0
44.0	47.4	47.1	4 500 *	50.1	46.7	4 500*	52.5	45.7	4 500*	44.0
48.0	42.0	43.0	4 500 *	44.6	42.5	4 500*	46.9	41.4	4 500*	48.0
52.0	36.0	37.9	4 500 *	38.5	37.4	4 500*	40.6	36.1	4 500*	52.0
56.0	28.8	31.4	4 500 *	31.3	30.8	4 500*				56.0
<b>45.7m (150 Ft.) BOOM</b>										
13.7	80.1	65.9	4 500 *							13.7
14.0	79.8	65.8	4 500 *							14.0
16.0	78.0	65.4	4 500 *							16.0
18.0	76.2	64.9	4 500 *	78.9	64.6	4 500*				18.0
20.0	74.3	64.4	4 500 *	77.1	64.0	4 500*	79.8	63.3	4 500*	20.0
22.0	72.5	63.7	4 500 *	75.2	63.4	4 500*	77.9	62.6	4 500*	22.0
24.0	70.6	63.0	4 500 *	73.3	62.7	4 500*	76.0	61.9	4 500*	24.0
26.0	68.7	62.3	4 500 *	71.4	61.9	4 500*	74.0	61.1	4 500*	26.0
28.0	66.7	61.4	4 500 *	69.4	61.1	4 500*	72.1	60.3	4 500*	28.0
32.0	62.8	59.5	4 500 *	65.5	59.1	4 500*	68.0	58.3	4 500*	32.0
36.0	58.7	57.2	4 500 *	61.3	56.8	4 500*	63.8	55.9	4 500*	36.0
40.0	54.4	54.4	4 500 *	57.0	54.1	4 500*	59.4	53.2	4 500*	40.0
44.0	49.8	51.3	4 500 *	52.4	50.9	4 500*	54.8	49.9	4 500*	44.0
48.0	45.0	47.5	4 500 *	47.5	47.1	4 500*	49.7	46.0	4 500*	48.0
52.0	39.6	43.0	4 500 *	42.1	42.5	4 500*	44.2	41.3	4 500*	52.0
56.0	33.5	37.4	4 500 *	35.9	36.9	4 500*				56.0
60.0	26.2	30.3	4 500 *							60.0



# Liftcrane Jib Capacities

Jib No. 123 With 3 810 mm Strut On  
Boom No. 82LR  
67 860 kg Counterweight  
360 Degree Rating

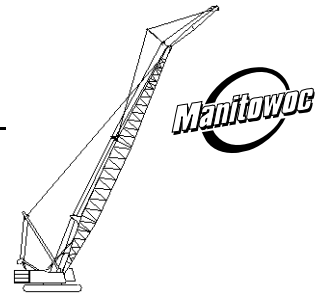
**Maximum Operating Wind Speeds  
(all jib lengths)**

14 m/s with 36.6m thru 54.9m Boom  
10 m/s with 57.9m thru 73.2m Boom  
7 m/s with 76.2m and 79.2m Boom

## 999 SERIES 1

### 18.3m (60 Ft.) JIB

Jib Oper. Rad. Meters	0 Degree Offset			10 Degree Offset			20 Degree Offset			Jib Oper. Rad. Meters
	Boom Ang. Deg.	Jib Point Elev. Meters	Jib Capacity Kilograms	Boom Ang. Deg.	Jib Point Elev. Meters	Jib Capacity Kilograms	Boom Ang. Deg.	Jib Point Elev. Meters	Jib Capacity Kilograms	
<b>48.8m (160 Ft.) BOOM</b>										
13.7	80.5	69.0	4 500 *							13.7
14.0	80.3	68.9	4 500 *							14.0
16.0	78.5	68.5	4 500 *							16.0
18.0	76.8	68.0	4 500 *	79.4	67.7	4 500 *				18.0
20.0	75.0	67.5	4 500 *	77.7	67.2	4 500 *	80.3	66.4	4 500 *	20.0
22.0	73.3	66.9	4 500 *	75.9	66.6	4 500 *	78.5	65.8	4 500 *	22.0
24.0	71.5	66.3	4 500 *	74.1	65.9	4 500 *	76.6	65.2	4 500 *	24.0
26.0	69.7	65.5	4 500 *	72.3	65.2	4 500 *	74.8	64.4	4 500 *	26.0
28.0	67.9	64.7	4 500 *	70.4	64.4	4 500 *	72.9	63.6	4 500 *	28.0
32.0	64.1	62.9	4 500 *	66.7	62.6	4 500 *	69.1	61.7	4 500 *	32.0
36.0	60.3	60.7	4 500 *	62.8	60.4	4 500 *	65.2	59.5	4 500 *	36.0
40.0	56.2	58.2	4 500 *	58.8	57.8	4 500 *	61.1	56.9	4 500 *	40.0
44.0	52.0	55.2	4 500 *	54.5	54.8	4 500 *	56.8	53.9	4 500 *	44.0
48.0	47.5	51.7	4 500 *	50.0	51.3	4 500 *	52.1	50.3	4 500 *	48.0
52.0	42.7	47.7	4 500 *	45.1	47.2	4 500 *	47.1	46.1	4 500 *	52.0
56.0	37.3	42.8	4 500 *	39.7	42.3	4 500 *	41.5	41.0	4 500 *	56.0
60.0	31.2	36.8	4 500 *	33.4	36.1	4 500 *				60.0
64.0	23.6	28.8	4 300							64.0
<b>51.8m (170 Ft.) BOOM</b>										
13.7	80.9	72.1	4 500 *							13.7
14.0	80.7	72.0	4 500 *							14.0
16.0	79.0	71.6	4 500 *							16.0
18.0	77.4	71.2	4 500 *	79.9	70.9	4 500 *				18.0
20.0	75.7	70.7	4 500 *	78.2	70.4	4 500 *	80.7	69.6	4 500 *	20.0
22.0	74.0	70.1	4 500 *	76.5	69.8	4 500 *	79.0	69.0	4 500 *	22.0
24.0	72.3	69.5	4 500 *	74.8	69.2	4 500 *	77.3	68.4	4 500 *	24.0
26.0	70.6	68.8	4 500 *	73.1	68.5	4 500 *	75.5	67.7	4 500 *	26.0
28.0	68.9	68.0	4 500 *	71.3	67.7	4 500 *	73.7	66.9	4 500 *	28.0
32.0	65.3	66.3	4 500 *	67.8	65.9	4 500 *	70.1	65.1	4 500 *	32.0
36.0	61.7	64.2	4 500 *	64.1	63.9	4 500 *	66.4	63.0	4 500 *	36.0
40.0	57.9	61.8	4 500 *	60.3	61.5	4 500 *	62.5	60.6	4 500 *	40.0
44.0	53.9	59.1	4 500 *	56.3	58.7	4 500 *	58.5	57.7	4 500 *	44.0
48.0	49.8	55.9	4 500 *	52.1	55.4	4 500 *	54.2	54.4	4 500 *	48.0
52.0	45.3	52.1	4 500 *	47.6	51.7	4 500 *	49.7	50.6	4 500 *	52.0
56.0	40.5	47.7	4 500 *	42.8	47.2	4 500 *	44.7	46.0	4 500 *	56.0
60.0	35.1	42.4	4 500 *	37.3	41.9	4 500 *				60.0
64.0	28.9	35.9	4 100	31.0	35.2	4 200				64.0
68.0	21.0	27.0	3 400							68.0



# Liftcrane Jib Capacities

Jib No. 123 With 3 810 mm Strut On  
Boom No. 82LR  
67 860 kg Counterweight  
360 Degree Rating

**Maximum Operating Wind Speeds  
(all jib lengths)**

14 m/s with 36.6m thru 54.9m Boom  
10 m/s with 57.9m thru 73.2m Boom  
7 m/s with 76.2m and 79.2m Boom

## 999 SERIES 1

### 18.3m (60 Ft.) JIB

Jib Oper. Rad. Meters	0 Degree Offset			10 Degree Offset			20 Degree Offset			Jib Oper. Rad. Meters
	Boom Ang. Deg.	Jib Point Elev. Meters	Jib Capacity Kilograms	Boom Ang. Deg.	Jib Point Elev. Meters	Jib Capacity Kilograms	Boom Ang. Deg.	Jib Point Elev. Meters	Jib Capacity Kilograms	
<b>54.9m (180 Ft.) BOOM</b>										
15.2	80.1	74.9	4 500 *							15.2
16.0	79.5	74.7	4 500 *							16.0
18.0	77.9	74.3	4 500 *							18.0
20.0	76.3	73.8	4 500 *	78.7	73.5	4 500*				20.0
22.0	74.7	73.3	4 500 *	77.1	73.0	4 500*	79.5	72.2	4 500*	22.0
24.0	73.1	72.7	4 500 *	75.5	72.4	4 500*	77.8	71.6	4 500*	24.0
26.0	71.4	72.0	4 500 *	73.8	71.7	4 500*	76.1	70.9	4 500*	26.0
28.0	69.8	71.3	4 500 *	72.2	71.0	4 500*	74.5	70.1	4 500*	28.0
32.0	66.4	69.6	4 500 *	68.8	69.3	4 500*	71.0	68.5	4 500*	32.0
36.0	62.9	67.7	4 500 *	65.3	67.3	4 500*	67.5	66.5	4 500*	36.0
40.0	59.4	65.4	4 500 *	61.7	65.1	4 500*	63.9	64.2	4 500*	40.0
44.0	55.7	62.8	4 500 *	58.0	62.4	4 500*	60.1	61.5	4 500*	44.0
48.0	51.8	59.8	4 500 *	54.0	59.4	4 500*	56.1	58.4	4 500*	48.0
52.0	47.6	56.4	4 500 *	49.9	55.9	4 500*	51.9	54.9	4 500*	52.0
56.0	43.2	52.3	4 500 *	45.4	51.9	4 500*	47.3	50.7	4 500*	56.0
60.0	38.4	47.6	4 500	40.6	47.1	4 500*	42.3	45.8	4 500*	60.0
64.0	33.0	41.9	3 900	35.1	41.3	4 000				64.0
68.0	26.6	34.7	3 200	28.6	34.0	3 300				68.0
<b>57.9m (190 Ft.) BOOM</b>										
15.2	80.5	78.0	4 500 *							15.2
16.0	79.9	77.8	4 500 *							16.0
18.0	78.4	77.4	4 500 *							18.0
20.0	76.9	77.0	4 500 *	79.2	76.6	4 500*				20.0
22.0	75.3	76.5	4 500 *	77.6	76.1	4 500*	79.9	75.3	4 500*	22.0
24.0	73.8	75.9	4 500 *	76.1	75.5	4 500*	78.3	74.7	4 500*	24.0
26.0	72.2	75.2	4 500 *	74.5	74.9	4 500*	76.7	74.1	4 500*	26.0
28.0	70.6	74.6	4 500 *	72.9	74.2	4 500*	75.1	73.4	4 500*	28.0
32.0	67.4	73.0	4 500 *	69.7	72.6	4 500*	71.9	71.8	4 500*	32.0
36.0	64.1	71.1	4 500 *	66.4	70.8	4 500*	68.5	69.9	4 500*	36.0
40.0	60.7	69.0	4 500 *	63.0	68.6	4 500*	65.0	67.7	4 500*	40.0
44.0	57.2	66.5	4 500 *	59.4	66.1	4 500*	61.5	65.2	4 500*	44.0
48.0	53.5	63.7	4 500 *	55.7	63.3	4 500*	57.7	62.3	4 500*	48.0
52.0	49.7	60.5	4 500 *	51.9	60.0	4 500*	53.8	59.0	4 500*	52.0
56.0	45.6	56.7	4 500 *	47.8	56.3	4 500*	49.6	55.2	4 500*	56.0
60.0	41.2	52.4	4 400	43.3	51.9	4 500	45.1	50.7	4 500*	60.0
64.0	36.4	47.3	3 600	38.4	46.8	3 800	40.0	45.4	3 900	64.0
68.0	30.9	41.2	3 000	32.9	40.6	3 100				68.0
72.0	24.3	33.3	2 400							72.0



# Liftcrane Jib Capacities

Jib No. 123 With 3 810 mm Strut On  
Boom No. 82LR  
67 860 kg Counterweight  
360 Degree Rating

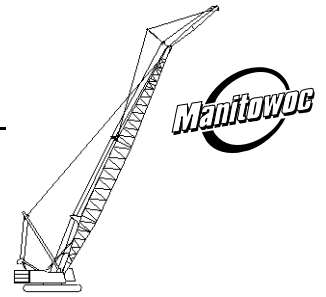
**Maximum Operating Wind Speeds  
(all jib lengths)**

14 m/s with 36.6m thru 54.9m Boom  
10 m/s with 57.9m thru 73.2m Boom  
7 m/s with 76.2m and 79.2m Boom

## 999 SERIES 1

### 18.3m (60 Ft.) JIB

Jib Oper. Rad. Meters	0 Degree Offset			10 Degree Offset			20 Degree Offset			Jib Oper. Rad. Meters
	Boom Ang. Deg.	Jib Point Elev. Meters	Jib Capacity Kilograms	Boom Ang. Deg.	Jib Point Elev. Meters	Jib Capacity Kilograms	Boom Ang. Deg.	Jib Point Elev. Meters	Jib Capacity Kilograms	
<b>61.0m (200 Ft.) BOOM</b>										
15.2	80.9	81.1	4 500 *							15.2
16.0	80.3	80.9	4 500 *							16.0
18.0	78.9	80.5	4 500 *							18.0
20.0	77.4	80.1	4 500 *	79.6	79.8	4 500*				20.0
22.0	75.9	79.6	4 500 *	78.1	79.3	4 500*	80.3	78.5	4 500*	22.0
24.0	74.4	79.1	4 500 *	76.6	78.7	4 500*	78.8	77.9	4 500*	24.0
26.0	72.9	78.5	4 500 *	75.1	78.1	4 500*	77.3	77.3	4 500*	26.0
28.0	71.4	77.8	4 500 *	73.6	77.4	4 500*	75.7	76.6	4 500*	28.0
32.0	68.3	76.3	4 500 *	70.5	75.9	4 500*	72.6	75.1	4 500*	32.0
36.0	65.2	74.5	4 500 *	67.3	74.1	4 500*	69.4	73.3	4 500*	36.0
40.0	61.9	72.5	4 500 *	64.1	72.1	4 500*	66.1	71.2	4 500*	40.0
44.0	58.6	70.1	4 500 *	60.8	69.8	4 500*	62.7	68.8	4 500*	44.0
48.0	55.2	67.5	4 500 *	57.3	67.1	4 500*	59.2	66.1	4 500*	48.0
52.0	51.6	64.4	4 500 *	53.6	64.0	4 500*	55.5	63.0	4 500*	52.0
56.0	47.7	61.0	4 500 *	49.8	60.5	4 500*	51.6	59.4	4 500*	56.0
60.0	43.7	57.0	4 100	45.7	56.5	4 400	47.4	55.3	4 400	60.0
64.0	39.3	52.4	3 400	41.3	51.8	3 500	42.9	50.6	3 700	64.0
68.0	34.4	46.9	2 700	36.4	46.3	2 800				68.0
72.0	28.9	40.3	2 100	30.7	39.6	2 300				72.0
<b>64.0m (210 Ft.) BOOM</b>										
16.8	80.1	83.9	4 500 *							16.8
18.0	79.3	83.7	4 500 *							18.0
20.0	77.9	83.2	4 500 *	80.0	82.9	4 500*				20.0
22.0	76.4	82.8	4 500 *	78.6	82.4	4 500*				22.0
24.0	75.0	82.2	4 500 *	77.1	81.9	4 500*	79.2	81.1	4 500*	24.0
26.0	73.6	81.6	4 500 *	75.7	81.3	4 500*	77.8	80.5	4 500*	26.0
28.0	72.1	81.0	4 500 *	74.2	80.7	4 500*	76.3	79.8	4 500*	28.0
32.0	69.2	79.6	4 500 *	71.3	79.2	4 500*	73.3	78.4	4 500*	32.0
36.0	66.2	77.9	4 500 *	68.2	77.5	4 500*	70.2	76.6	4 500*	36.0
40.0	63.1	75.9	4 500 *	65.2	75.6	4 500*	67.1	74.7	4 500*	40.0
44.0	59.9	73.7	4 500 *	62.0	73.3	4 500*	63.9	72.4	4 500*	44.0
48.0	56.6	71.2	4 500 *	58.7	70.8	4 500*	60.5	69.8	4 500*	48.0
52.0	53.2	68.3	4 500 *	55.2	67.9	4 500*	57.1	66.9	4 500*	52.0
56.0	49.7	65.0	4 500 *	51.7	64.6	4 500*	53.4	63.6	4 500*	56.0
60.0	45.9	61.3	3 900	47.9	60.9	4 100	49.5	59.8	4 300	60.0
64.0	41.8	57.1	3 100	43.8	56.6	3 300	45.4	55.4	3 500	64.0
68.0	37.4	52.2	2 400	39.3	51.6	2 600	40.8	50.3	2 800	68.0
72.0				34.4	45.7	2 000				72.0



# Liftcrane Jib Capacities

Jib No. 123 With 3 810 mm Strut On  
Boom No. 82LR  
67 860 kg Counterweight  
360 Degree Rating

**Maximum Operating Wind Speeds  
(all jib lengths)**

14 m/s with 36.6m thru 54.9m Boom  
10 m/s with 57.9m thru 73.2m Boom  
7 m/s with 76.2m and 79.2m Boom

## 999 SERIES 1

### 18.3m (60 Ft.) JIB

Jib Oper. Rad. Meters	0 Degree Offset			10 Degree Offset			20 Degree Offset			Jib Oper. Rad. Meters
	Boom Ang. Deg.	Jib Point Elev. Meters	Jib Capacity Kilograms	Boom Ang. Deg.	Jib Point Elev. Meters	Jib Capacity Kilograms	Boom Ang. Deg.	Jib Point Elev. Meters	Jib Capacity Kilograms	
<b>67.1m (220 Ft.) BOOM</b>										
16.8	80.5	87.0	4 500 *							16.8
18.0	79.7	86.8	4 500 *							18.0
20.0	78.3	86.4	4 500 *	80.4	86.0	4 500*				20.0
22.0	76.9	85.9	4 500 *	79.0	85.6	4 500*				22.0
24.0	75.5	85.4	4 500 *	77.6	85.0	4 500*	79.6	84.2	4 500*	24.0
26.0	74.2	84.8	4 500 *	76.2	84.5	4 500*	78.2	83.6	4 500*	26.0
28.0	72.8	84.2	4 500 *	74.8	83.9	4 500*	76.8	83.0	4 500*	28.0
32.0	69.9	82.8	4 500 *	72.0	82.5	4 500*	73.9	81.6	4 500*	32.0
36.0	67.1	81.2	4 500 *	69.1	80.8	4 500*	71.0	80.0	4 500*	36.0
40.0	64.1	79.3	4 500 *	66.1	79.0	4 500*	68.0	78.1	4 500*	40.0
44.0	61.1	77.2	4 500 *	63.1	76.8	4 500*	64.9	75.9	4 500*	44.0
48.0	58.0	74.8	4 500 *	59.9	74.4	4 500*	61.8	73.5	4 500*	48.0
52.0	54.7	72.1	4 500 *	56.7	71.7	4 500*	58.5	70.7	4 500*	52.0
56.0	51.4	69.0	4 400	53.3	68.6	4 500*	55.0	67.6	4 500*	56.0
60.0	47.8	65.6	3 600	49.8	65.1	3 900	51.4	64.0	4 100	60.0
64.0	44.1	61.6	2 900	46.0	61.1	3 100	47.6	60.0	3 300	64.0
68.0	40.1	57.1	2 200	41.9	56.6	2 400	43.4	55.3	2 600	68.0
<b>70.1m (230 Ft.) BOOM</b>										
16.8	80.8	90.1	4 500 *							16.8
18.0	80.0	89.9	4 500 *							18.0
20.0	78.7	89.5	4 500 *	80.7	89.1	4 500*				20.0
22.0	77.4	89.0	4 500 *	79.4	88.7	4 500*				22.0
24.0	76.1	88.5	4 500 *	78.0	88.2	4 500*	80.0	87.4	4 500*	24.0
26.0	74.7	88.0	4 500 *	76.7	87.7	4 500*	78.6	86.8	4 500*	26.0
28.0	73.4	87.4	4 500 *	75.4	87.1	4 500*	77.3	86.2	4 500*	28.0
32.0	70.7	86.1	4 500 *	72.6	85.7	4 500*	74.5	84.9	4 500*	32.0
36.0	67.9	84.5	4 500 *	69.8	84.2	4 500*	71.7	83.3	4 500*	36.0
40.0	65.1	82.7	4 500 *	67.0	82.4	4 500*	68.8	81.5	4 500*	40.0
44.0	62.2	80.7	4 500 *	64.1	80.3	4 500*	65.9	79.4	4 500*	44.0
48.0	59.2	78.4	4 500 *	61.1	78.0	4 500*	62.9	77.1	4 500*	48.0
52.0	56.1	75.8	4 500 *	58.0	75.4	4 500*	59.8	74.4	4 500*	52.0
56.0	52.9	72.9	4 200	54.8	72.5	4 500	56.5	71.5	4 500*	56.0
60.0	49.6	69.6	3 400	51.5	69.2	3 600	53.1	68.1	3 900	60.0
64.0	46.1	66.0	2 600	47.9	65.5	2 900	49.5	64.4	3 100	64.0
68.0	42.4	61.8	2 000	44.2	61.3	2 200	45.7	60.1	2 400	68.0





# Liftcrane Jib Capacities

Jib No. 123 With 3 810 mm Strut On  
Boom No. 82LR  
67 860 kg Counterweight  
360 Degree Rating

**Maximum Operating Wind Speeds  
(all jib lengths)**

14 m/s with 36.6m thru 54.9m Boom  
10 m/s with 57.9m thru 73.2m Boom  
7 m/s with 76.2m and 79.2m Boom

## 999 SERIES 1

### 18.3m (60 Ft.) JIB

Jib Oper. Rad. Meters	0 Degree Offset			10 Degree Offset			20 Degree Offset			Jib Oper. Rad. Meters
	Boom Ang. Deg.	Jib Point Elev. Meters	Jib Capacity Kilograms	Boom Ang. Deg.	Jib Point Elev. Meters	Jib Capacity Kilograms	Boom Ang. Deg.	Jib Point Elev. Meters	Jib Capacity Kilograms	
<b>73.2m (240 Ft.) BOOM</b>										
18.3	80.2	92.9	4 500 *							18.3
20.0	79.1	92.6	4 500 *							20.0
22.0	77.8	92.2	4 500 *	79.7	91.8	4 500*				22.0
24.0	76.5	91.7	4 500 *	78.5	91.3	4 500*				24.0
26.0	75.2	91.2	4 500 *	77.2	90.8	4 500*	79.0	90.0	4 500*	26.0
28.0	73.9	90.6	4 500 *	75.9	90.2	4 500*	77.7	89.4	4 500*	28.0
32.0	71.3	89.3	4 500 *	73.2	88.9	4 500*	75.1	88.1	4 500*	32.0
36.0	68.7	87.8	4 500 *	70.6	87.4	4 500*	72.4	86.6	4 500*	36.0
40.0	65.9	86.1	4 500 *	67.8	85.7	4 500*	69.6	84.8	4 500*	40.0
44.0	63.2	84.1	4 500 *	65.0	83.8	4 500*	66.8	82.9	4 500*	44.0
48.0	60.3	82.0	4 500 *	62.2	81.6	4 500*	63.9	80.6	4 500*	48.0
52.0	57.4	79.5	4 500 *	59.2	79.1	4 500*	60.9	78.1	4 500*	52.0
56.0	54.4	76.7	4 000	56.2	76.3	4 200	57.8	75.3	4 500*	56.0
60.0	51.2	73.6	3 100	53.0	73.2	3 400	54.6	72.1	3 600	60.0
64.0	47.9	70.2	2 300	49.7	69.7	2 600	51.2	68.6	2 800	64.0
68.0				46.2	65.8	1 900	47.7	64.6	2 100	68.0
<b>76.2m (250 Ft.) BOOM</b>										
18.3	80.5	96.0	4 500 *							18.3
20.0	79.4	95.7	4 500 *							20.0
22.0	78.2	95.3	4 500 *	80.1	94.9	4 500*				22.0
24.0	77.0	94.8	4 500 *	78.8	94.5	4 500*				24.0
26.0	75.7	94.3	4 500 *	77.6	94.0	4 500*	79.4	93.1	4 500*	26.0
28.0	74.5	93.8	4 500 *	76.3	93.4	4 500*	78.1	92.6	4 500*	28.0
32.0	71.9	92.5	4 500 *	73.8	92.2	4 500*	75.6	91.3	4 500*	32.0
36.0	69.4	91.1	4 500 *	71.2	90.7	4 500*	73.0	89.8	4 500*	36.0
40.0	66.8	89.4	4 500 *	68.6	89.1	4 500*	70.3	88.2	4 500*	40.0
44.0	64.1	87.6	4 500 *	65.9	87.2	4 500*	67.6	86.3	4 500*	44.0
48.0	61.4	85.5	4 500 *	63.2	85.1	4 500*	64.8	84.1	4 500*	48.0
52.0	58.6	83.1	4 500	60.4	82.7	4 500*	62.0	81.7	4 500*	52.0
56.0	55.7	80.5	3 700	57.5	80.1	4 100	59.1	79.1	4 300	56.0
60.0	52.7	77.5	2 800	54.4	77.1	3 100	56.0	76.1	3 400	60.0
64.0	49.6	74.2	2 100	51.3	73.8	2 400	52.8	72.7	2 600	64.0
68.0							49.5	69.0	1 900	68.0