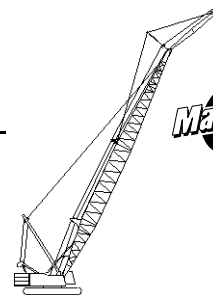




# Liftcrane Jib Capacities

**New York City Code**  
**Jib No. 134 With 12 Ft. 6 in. Strut On**  
**Boom No. 82LR**  
**149,600 Lb. Counterweight**  
**360 Degree Rating**

Meets  
ANSI B30.5  
Requirements



## 999 SERIES 1

**LIFTING CAPACITIES:** Chart supplements boom capacity chart **No. 8320-A**. Lifting capacities for various boom lengths, jib lengths and jib operating radii are for freely suspended loads and do not exceed 75% of a static tipping load for boom and jib length combinations thru 250 Ft. and New York City criteria of 1.4 factor applied to total machine moment for boom and jib length combinations 260 Ft. on up. Capacities based on structural competence are denoted by an asterisk (\*).

Weight of all load blocks, hooks, weight ball, slings, hoist lines, etc., beneath boom and jib point sheaves, is considered part of jib load. Boom and jib are not to be lowered beyond radii where combined weights are greater than rated capacity. Where no capacity is shown, operation is not intended or approved.

**OPERATING CONDITIONS:** Machine to operate in a level position on a firm uniformly supporting surface with gantry up. Refer to boom rigging **No. 196100**, jib assembly **No. 196263** and Wire Rope Specification chart **No. 8315-A**. Crane operator judgment must be used to allow for dynamic load effects of swinging, hoisting or lowering, travel, wind conditions, as well as adverse operating conditions and physical machine depreciation. Refer to operators manual for operating guidelines.

**MACHINE TRAVEL:** Machine to travel on a firm, level and uniformly supporting surface and boom within boom angle

range shown in capacity chart. Refer to Maximum Allowable Travel Specification chart **No. 8316-A**.

**OPERATING RADIUS:** Operating radius is horizontal distance from axis of rotation to center of vertical hoist line or load block. Boom angle is angle between horizontal and centerline of boom butt and inserts, and is an indication of operating radius. In all cases, operating radius shall govern capacity.

**JIB POINT ELEVATION:** Jib point elevation is vertical distance from ground level to centerline of jib point shaft.

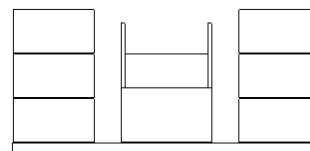
**MACHINE EQUIPMENT:** Machine equipped with 28 Ft. 2 in. crawlers, 48 in. treads, 10 Ft. 3 in. retractable gantry, 30 Ft. live mast, 20 part boom hoist reeving, boom support straps and 149,600 Lb. counterweight.

Maximum capacity on 26 mm wire rope is 29,500 Lbs. per line (20,000 Lbs. on 26 mm or 1 in. wire rope when auxiliary drum is used).

**Maximum Boom and Jib Lengths Lifted Unassisted**

Over End of Blocked Crawlers		Over Side of Crawlers	
Boom Length	Jib No. 134	Boom Length	Jib No. 134
280 Ft.	—	260 Ft.	—
270 Ft.	—	250 Ft.	—
260 Ft.	40 Ft.	240 Ft.	30 Ft.
250 Ft.	60 Ft.	230 Ft.	60 Ft.
240 Ft.	80 Ft.	220 Ft.	80 Ft.

Load block, hook and weight ball on ground at start.



149,600 Lb. Crane Counterweight  
6 Side Boxes - 1 Center Box



# Liftcrane Jib Capacities

New York City Code  
Jib No. 134 With 12 Ft. 6 in. Strut On  
Boom No. 82LR  
149,600 Lb. Counterweight  
360 Degree Rating

Meets  
ANSI B30.5  
Requirements

## 999 SERIES 1

### 30 Ft. JIB

Jib Oper. Rad. Feet	5 Degree Offset			15 Degree Offset			25 Degree Offset			Jib Oper. Rad. Feet
	Boom Ang. Deg.	Jib Point Elev. Feet	Jib Capacity Pounds	Boom Ang. Deg.	Jib Point Elev. Feet	Jib Capacity Pounds	Boom Ang. Deg.	Jib Point Elev. Feet	Jib Capacity Pounds	
<b>120 Ft. BOOM</b>										
35	79.8	157.3	59,000 *							35
40	77.9	156.2	59,000 *	79.9	155.3	58,100*				40
45	76.0	155.0	59,000 *	77.9	154.1	57,200*	79.9	152.1	45,500*	45
50	74.0	153.5	59,000 *	75.9	152.6	56,300*	77.9	150.6	43,600*	50
55	72.0	151.9	59,000 *	73.9	150.9	55,500*	75.9	149.0	41,900*	55
60	70.0	150.0	58,600 *	71.9	149.1	54,800*	73.8	147.1	40,400*	60
65	68.0	148.0	57,700 *	69.9	147.0	54,100*	71.8	145.0	39,000*	65
70	65.9	145.7	56,800 *	67.8	144.8	53,500*	69.7	142.7	37,700*	70
75	63.8	143.3	55,800	65.7	142.3	52,900*	67.5	140.2	36,500*	75
80	61.7	140.6	51,100	63.5	139.5	51,700	65.3	137.4	35,400*	80
85	59.5	137.6	47,000	61.3	136.6	47,500	63.1	134.3	34,400*	85
90	57.2	134.4	43,400	59.1	133.3	43,800	60.8	131.0	33,500*	90
100	52.6	127.0	37,300	54.4	125.9	37,700	56.0	123.5	31,900*	100
110	47.6	118.3	32,500	49.3	117.1	32,800	50.8	114.5	30,500*	110
120	42.1	107.8	28,500	43.8	106.5	28,800	45.1	103.5	29,000	120
130	36.0	94.9	25,200	37.5	93.4	25,400				130
140	28.7	78.4	22,400							140
<b>130 Ft. BOOM</b>										
35	80.5	167.5	59,000 *							35
40	78.7	166.5	59,000 *	80.5	165.6	58,400*				40
45	76.8	165.3	59,000 *	78.7	164.4	57,500*	80.6	162.4	46,100*	45
50	75.0	163.9	59,000 *	76.8	163.0	56,700*	78.7	161.0	44,300*	50
55	73.2	162.4	59,000 *	75.0	161.5	55,900*	76.8	159.5	42,700*	55
60	71.3	160.7	59,000 *	73.1	159.8	55,200*	74.9	157.7	41,200*	60
65	69.4	158.8	58,300 *	71.2	157.9	54,500*	73.0	155.8	39,800*	65
70	67.5	156.7	57,400 *	69.3	155.8	53,900*	71.0	153.7	38,500*	70
75	65.6	154.4	55,600	67.3	153.4	53,300*	69.0	151.3	37,300*	75
80	63.6	151.9	50,800	65.3	150.9	51,500	67.0	148.8	36,200*	80
85	61.6	149.2	46,700	63.3	148.2	47,300	65.0	146.0	35,200*	85
90	59.5	146.3	43,100	61.2	145.2	43,600	62.9	143.0	34,300*	90
100	55.3	139.6	37,100	57.0	138.5	37,500	58.5	136.1	32,700*	100
110	50.8	131.7	32,300	52.4	130.6	32,600	53.9	128.0	31,300*	110
120	46.0	122.5	28,300	47.6	121.2	28,600	48.9	118.5	28,800	120
130	40.7	111.5	25,000	42.2	110.1	25,200	43.4	107.0	25,400	130
140	34.8	98.0	22,100	36.2	96.4	22,300				140
150	27.7	80.8	19,700							150



# Liftcrane Jib Capacities

New York City Code  
Jib No. 134 With 12 Ft. 6 in. Strut On  
Boom No. 82LR  
149,600 Lb. Counterweight  
360 Degree Rating

Meets  
ANSI B30.5  
Requirements

## 999 SERIES 1

### 30 Ft. JIB

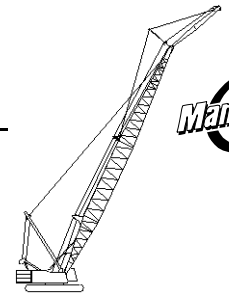
Jib Oper. Rad. Feet	5 Degree Offset			15 Degree Offset			25 Degree Offset			Jib Oper. Rad. Feet
	Boom Ang. Deg.	Jib Point Elev. Feet	Jib Capacity Pounds	Boom Ang. Deg.	Jib Point Elev. Feet	Jib Capacity Pounds	Boom Ang. Deg.	Jib Point Elev. Feet	Jib Capacity Pounds	
<b>140 Ft. BOOM</b>										
35	81.0	177.7	59,000 *							35
40	79.3	176.7	59,000 *							40
45	77.6	175.6	59,000 *	79.4	174.7	57,900*				45
50	75.9	174.3	59,000 *	77.6	173.4	57,100*	79.4	171.4	45,000*	50
55	74.2	172.9	59,000 *	75.9	172.0	56,300*	77.6	169.9	43,400*	55
60	72.4	171.3	59,000 *	74.1	170.3	55,600*	75.8	168.3	41,900*	60
65	70.7	169.5	59,000 *	72.4	168.6	54,900*	74.1	166.5	40,500*	65
70	68.9	167.6	58,100 *	70.6	166.6	54,300*	72.2	164.5	39,300*	70
75	67.1	165.4	55,300	68.7	164.5	53,700*	70.4	162.3	38,100*	75
80	65.2	163.1	50,600	66.9	162.1	51,200	68.5	160.0	37,000*	80
85	63.4	160.6	46,400	65.0	159.6	47,000	66.6	157.4	36,000*	85
90	61.5	157.9	42,800	63.1	156.8	43,400	64.7	154.6	35,100*	90
100	57.6	151.7	36,800	59.2	150.7	37,300	60.7	148.3	33,400*	100
110	53.5	144.6	32,000	55.1	143.5	32,400	56.5	141.0	32,000*	110
120	49.1	136.3	28,000	50.7	135.1	28,300	52.0	132.4	28,600	120
130	44.5	126.5	24,700	46.0	125.2	25,000	47.2	122.4	25,200	130
140	39.4	115.0	21,900	40.8	113.5	22,100				140
150	33.7	101.0	19,400	35.0	99.3	19,600				150
160	26.9	83.1	17,300							160
<b>150 Ft. BOOM</b>										
40	79.9	186.9	59,000 *							40
45	78.3	185.9	59,000 *	80.0	184.9	58,100*				45
50	76.7	184.7	59,000 *	78.3	183.7	57,400*	80.0	181.7	45,600*	50
55	75.1	183.3	59,000 *	76.7	182.4	56,600*	78.3	180.3	44,000*	55
60	73.4	181.8	59,000 *	75.0	180.9	56,000*	76.7	178.8	42,600*	60
65	71.8	180.1	59,000 *	73.4	179.2	55,300*	75.0	177.1	41,200*	65
70	70.1	178.3	58,700 *	71.7	177.4	54,700*	73.3	175.3	40,000*	70
75	68.4	176.3	55,000	70.0	175.3	54,100*	71.6	173.2	38,800*	75
80	66.7	174.2	50,300	68.3	173.2	51,000	69.8	171.0	37,800*	80
85	65.0	171.8	46,200	66.5	170.8	46,800	68.0	168.6	36,800*	85
90	63.2	169.3	42,500	64.7	168.2	43,100	66.2	166.0	35,800*	90
100	59.6	163.6	36,500	61.1	162.5	37,000	62.5	160.2	34,200*	100
110	55.8	157.0	31,700	57.3	155.9	32,100	58.7	153.5	32,500	110
120	51.9	149.4	27,700	53.3	148.3	28,100	54.6	145.7	28,400	120
130	47.7	140.7	24,400	49.1	139.4	24,700	50.3	136.7	25,000	130
140	43.2	130.5	21,600	44.6	129.1	21,800	45.7	126.2	22,000	140
150	38.3	118.4	19,200	39.6	116.9	19,400				150
160	32.7	103.8	17,000	33.9	102.1	17,200				160
170	26.1	85.3	15,200							170



# Liftcrane Jib Capacities

New York City Code  
 Jib No. 134 With 12 Ft. 6 in. Strut On  
 Boom No. 82LR  
 149,600 Lb. Counterweight  
 360 Degree Rating

Meets  
 ANSI B30.5  
 Requirements



## 999 SERIES 1

### 30 Ft. JIB

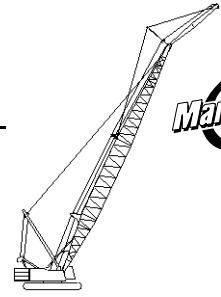
Jib Oper. Rad. Feet	5 Degree Offset			15 Degree Offset			25 Degree Offset			Jib Oper. Rad. Feet
	Boom Ang. Deg.	Jib Point Elev. Feet	Jib Capacity Pounds	Boom Ang. Deg.	Jib Point Elev. Feet	Jib Capacity Pounds	Boom Ang. Deg.	Jib Point Elev. Feet	Jib Capacity Pounds	
<b>160 Ft. BOOM</b>										
40	80.5	197.1	59,000 *							40
45	78.9	196.1	59,000 *	80.5	195.2	58,400*				45
50	77.4	195.0	59,000 *	79.0	194.0	57,700*	80.5	192.0	46,100*	50
55	75.9	193.7	59,000 *	77.4	192.7	57,000*	79.0	190.7	44,600*	55
60	74.3	192.3	59,000 *	75.9	191.3	56,300*	77.4	189.3	43,200*	60
65	72.8	190.7	59,000 *	74.3	189.7	55,600*	75.8	187.7	41,900*	65
70	71.2	189.0	59,000 *	72.7	188.0	55,000*	74.2	185.9	40,600*	70
75	69.6	187.1	54,600	71.1	186.1	54,500*	72.6	184.0	39,500*	75
80	68.0	185.1	49,800	69.5	184.1	50,600	71.0	181.9	38,400*	80
85	66.3	182.9	45,700	67.8	181.9	46,400	69.3	179.7	37,500*	85
90	64.7	180.5	42,100	66.2	179.5	42,700	67.6	177.3	36,500*	90
100	61.3	175.2	36,000	62.8	174.1	36,600	64.2	171.9	34,900*	100
110	57.8	169.1	31,200	59.3	168.0	31,600	60.6	165.6	32,100	110
120	54.2	162.1	27,200	55.6	161.0	27,600	56.9	158.5	28,000	120
130	50.4	154.1	23,900	51.8	152.9	24,200	53.0	150.3	24,500	130
140	46.3	144.9	21,100	47.7	143.6	21,400	48.8	140.8	21,600	140
150	42.0	134.2	18,600	43.3	132.8	18,900	44.3	129.8	19,100	150
160	37.2	121.7	16,500	38.4	120.2	16,700				160
170	31.8	106.6	14,700	32.9	104.8	14,800				170
180	25.3	87.5	13,000							180



# Liftcrane Jib Capacities

New York City Code  
Jib No. 134 With 12 Ft. 6 in. Strut On  
Boom No. 82LR  
149,600 Lb. Counterweight  
360 Degree Rating

Meets  
ANSI B30.5  
Requirements



## 999 SERIES 1

### 30 Ft. JIB

Jib Oper. Rad. Feet	5 Degree Offset			15 Degree Offset			25 Degree Offset			Jib Oper. Rad. Feet
	Boom Ang. Deg.	Jib Point Elev. Feet	Jib Capacity Pounds	Boom Ang. Deg.	Jib Point Elev. Feet	Jib Capacity Pounds	Boom Ang. Deg.	Jib Point Elev. Feet	Jib Capacity Pounds	
<b>170 Ft. BOOM</b>										
40	80.9	207.3	59,000 *							40
45	79.5	206.3	59,000 *	81.0	205.4	58,700*				45
50	78.0	205.2	59,000 *	79.5	204.3	57,900*	81.0	202.3	46,600*	50
55	76.6	204.0	59,000 *	78.1	203.1	57,200*	79.5	201.0	45,100*	55
60	75.1	202.7	59,000 *	76.6	201.7	56,600*	78.1	199.7	43,700*	60
65	73.6	201.2	59,000 *	75.1	200.2	56,000*	76.6	198.1	42,500*	65
70	72.1	199.6	59,000 *	73.6	198.6	55,400*	75.0	196.5	41,300*	70
75	70.6	197.8	54,300	72.1	196.8	54,800*	73.5	194.7	40,100*	75
80	69.1	195.9	49,500	70.6	194.9	50,300	72.0	192.7	39,100*	80
85	67.6	193.8	45,400	69.0	192.8	46,100	70.4	190.6	38,100*	85
90	66.0	191.6	41,700	67.5	190.6	42,400	68.8	188.4	37,200*	90
100	62.9	186.6	35,700	64.3	185.6	36,200	65.6	183.3	35,500*	100
110	59.6	180.9	30,800	61.0	179.8	31,300	62.3	177.5	31,800	110
120	56.2	174.4	26,900	57.6	173.3	27,300	58.8	170.9	27,700	120
130	52.7	167.0	23,500	54.0	165.9	23,900	55.2	163.3	24,200	130
140	49.0	158.6	20,700	50.3	157.4	21,000	51.4	154.7	21,300	140
150	45.1	149.0	18,300	46.3	147.7	18,600	47.4	144.8	18,800	150
160	40.8	137.9	16,200	42.1	136.5	16,400				160
170	36.2	125.0	14,300	37.4	123.3	14,500				170
180	30.9	109.4	12,700	32.0	107.5	12,800				180
190	24.7	89.7	11,200							190

# Manitowoc Cranes, Inc.

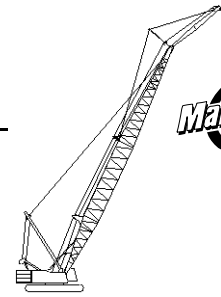
Manitowoc, Wisconsin 54220 U.S.A.



## Liftcrane Jib Capacities

New York City Code  
 Jib No. 134 With 12 Ft. 6 in. Strut On  
 Boom No. 82LR  
 149,600 Lb. Counterweight  
 360 Degree Rating

Meets  
 ANSI B30.5  
 Requirements



## 999 SERIES 1

### 30 Ft. JIB

Jib Oper. Rad. Feet	5 Degree Offset			15 Degree Offset			25 Degree Offset			Jib Oper. Rad. Feet
	Boom Ang. Deg.	Jib Point Elev. Feet	Jib Capacity Pounds	Boom Ang. Deg.	Jib Point Elev. Feet	Jib Capacity Pounds	Boom Ang. Deg.	Jib Point Elev. Feet	Jib Capacity Pounds	
<b>180 Ft. BOOM</b>										
45	80.0	216.5	59,000 *							45
50	78.6	215.5	59,000 *	80.0	214.5	58,200*				50
55	77.2	214.3	59,000 *	78.6	213.4	57,500*	80.1	211.3	45,600*	55
60	75.8	213.1	59,000 *	77.2	212.1	56,900*	78.6	210.0	44,300*	60
65	74.4	211.6	59,000 *	75.8	210.7	56,300*	77.2	208.6	43,000*	65
70	73.0	210.1	59,000 *	74.4	209.1	55,700*	75.8	207.0	41,800*	70
75	71.6	208.4	54,000	73.0	207.4	54,800	74.3	205.3	40,700*	75
80	70.2	206.6	49,200	71.5	205.6	50,000	72.9	203.5	39,700*	80
85	68.7	204.6	45,000	70.1	203.6	45,800	71.4	201.5	38,700*	85
90	67.2	202.5	41,400	68.6	201.5	42,100	69.9	199.3	37,800*	90
100	64.3	197.8	35,300	65.6	196.8	35,900	66.9	194.6	36,200*	100
110	61.2	192.5	30,500	62.5	191.4	31,000	63.8	189.1	31,500	110
120	58.0	186.4	26,500	59.3	185.3	27,000	60.5	182.9	27,400	120
130	54.8	179.6	23,200	56.0	178.4	23,600	57.2	175.9	23,900	130
140	51.3	171.8	20,400	52.6	170.6	20,700	53.7	168.0	21,000	140
150	47.7	163.0	18,000	49.0	161.7	18,300	50.0	159.0	18,500	150
160	43.9	153.0	15,900	45.1	151.6	16,100	46.1	148.7	16,300	160
170	39.8	141.5	14,000	41.0	140.0	14,200				170
180	35.3	128.1	12,400	36.4	126.4	12,500				180
190	30.2	112.0	10,900							190
200	24.1	91.7	9,600							200



# Liftcrane Jib Capacities

New York City Code  
Jib No. 134 With 12 Ft. 6 in. Strut On  
Boom No. 82LR  
149,600 Lb. Counterweight  
360 Degree Rating

Meets  
ANSI B30.5  
Requirements

## 999 SERIES 1

### 30 Ft. JIB

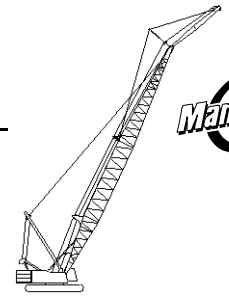
Jib Oper. Rad. Feet	5 Degree Offset			15 Degree Offset			25 Degree Offset			Jib Oper. Rad. Feet
	Boom Ang. Deg.	Jib Point Elev. Feet	Jib Capacity Pounds	Boom Ang. Deg.	Jib Point Elev. Feet	Jib Capacity Pounds	Boom Ang. Deg.	Jib Point Elev. Feet	Jib Capacity Pounds	
<b>190 Ft. BOOM</b>										
45	80.4	226.7	59,000 *							45
50	79.1	225.7	59,000 *	80.5	224.7	58,400*				50
55	77.8	224.6	59,000 *	79.2	223.6	57,700*	80.5	221.6	46,100*	55
60	76.5	223.4	59,000 *	77.8	222.4	57,100*	79.2	220.3	44,800*	60
65	75.2	222.1	59,000 *	76.5	221.1	56,500*	77.8	219.0	43,500*	65
70	73.8	220.6	59,000 *	75.1	219.6	56,000*	76.5	217.5	42,400*	70
75	72.5	219.0	53,700	73.8	218.0	54,600	75.1	215.9	41,300*	75
80	71.1	217.3	48,900	72.4	216.3	49,700	73.7	214.1	40,300*	80
85	69.7	215.4	44,700	71.0	214.4	45,500	72.3	212.2	39,300*	85
90	68.3	213.4	41,100	69.6	212.4	41,800	70.9	210.2	38,400*	90
100	65.5	209.0	35,000	66.8	207.9	35,600	68.0	205.7	36,200	100
110	62.6	203.9	30,200	63.9	202.9	30,700	65.1	200.6	31,200	110
120	59.6	198.2	26,200	60.9	197.1	26,600	62.1	194.8	27,100	120
130	56.6	191.8	22,900	57.8	190.7	23,300	58.9	188.2	23,600	130
140	53.4	184.6	20,000	54.6	183.4	20,400	55.7	180.8	20,700	140
150	50.1	176.5	17,600	51.3	175.2	17,900	52.3	172.5	18,200	150
160	46.6	167.3	15,500	47.7	166.0	15,800	48.7	163.1	16,000	160
170	42.9	156.9	13,700	44.0	155.5	13,900	44.9	152.5	14,100	170
180	38.8	145.0	12,000	39.9	143.5	12,200				180
190	34.4	131.1	10,600	35.5	129.4	10,700				190
200	29.4	114.6	9,200							200
210	23.5	93.8	8,000							210



# Liftcrane Jib Capacities

New York City Code  
 Jib No. 134 With 12 Ft. 6 in. Strut On  
 Boom No. 82LR  
 149,600 Lb. Counterweight  
 360 Degree Rating

Meets  
 ANSI B30.5  
 Requirements



## 999 SERIES 1

### 30 Ft. JIB

Jib Oper. Rad. Feet	5 Degree Offset			15 Degree Offset			25 Degree Offset			Jib Oper. Rad. Feet
	Boom Ang. Deg.	Jib Point Elev. Feet	Jib Capacity Pounds	Boom Ang. Deg.	Jib Point Elev. Feet	Jib Capacity Pounds	Boom Ang. Deg.	Jib Point Elev. Feet	Jib Capacity Pounds	
<b>200 Ft. BOOM</b>										
45	80.9	236.8	59,000 *							45
50	79.6	235.9	59,000 *	80.9	234.9	58,600*				50
55	78.3	234.9	59,000 *	79.6	233.9	58,000*	80.9	231.8	46,500*	55
60	77.1	233.7	59,000 *	78.4	232.7	57,400*	79.7	230.6	45,200*	60
65	75.8	232.4	59,000 *	77.1	231.4	56,800*	78.4	229.3	44,000*	65
70	74.5	231.0	58,800	75.8	230.0	56,200*	77.1	227.9	42,900*	70
75	73.2	229.5	53,200	74.5	228.5	54,200	75.8	226.4	41,800*	75
80	71.9	227.9	48,400	73.2	226.9	49,300	74.4	224.7	40,800*	80
85	70.6	226.1	44,200	71.9	225.1	45,100	73.1	222.9	39,900*	85
90	69.3	224.2	40,600	70.6	223.2	41,400	71.8	221.0	39,000*	90
100	66.6	220.0	34,500	67.9	218.9	35,200	69.1	216.7	35,800	100
110	63.9	215.2	29,600	65.1	214.1	30,200	66.3	211.9	30,800	110
120	61.1	209.8	25,700	62.3	208.7	26,200	63.4	206.4	26,600	120
130	58.2	203.8	22,300	59.4	202.7	22,800	60.5	200.2	23,200	130
140	55.2	197.0	19,500	56.4	195.9	19,900	57.5	193.4	20,300	140
150	52.1	189.5	17,100	53.3	188.2	17,400	54.3	185.6	17,700	150
160	48.9	181.0	15,000	50.0	179.7	15,300	51.0	177.0	15,500	160
170	45.5	171.5	13,100	46.6	170.1	13,400	47.5	167.2	13,600	170
180	41.9	160.7	11,500	42.9	159.3	11,700	43.8	156.1	11,900	180
190	38.0	148.4	10,000	39.0	146.8	10,200				190
200	33.7	134.1	8,700	34.6	132.4	8,900				200
210	28.8	117.1	7,500							210
220	23.0	95.7	6,400							220





# Liftcrane Jib Capacities

New York City Code  
Jib No. 134 With 12 Ft. 6 in. Strut On  
Boom No. 82LR  
149,600 Lb. Counterweight  
360 Degree Rating

Meets  
ANSI B30.5  
Requirements

## 999 SERIES 1

### 30 Ft. JIB

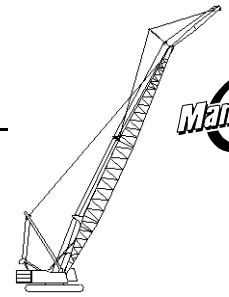
Jib Oper. Rad. Feet	5 Degree Offset			15 Degree Offset			25 Degree Offset			Jib Oper. Rad. Feet
	Boom Ang. Deg.	Jib Point Elev. Feet	Jib Capacity Pounds	Boom Ang. Deg.	Jib Point Elev. Feet	Jib Capacity Pounds	Boom Ang. Deg.	Jib Point Elev. Feet	Jib Capacity Pounds	
<b>210 Ft. BOOM</b>										
50	80.0	246.1	59,000 *							50
55	78.8	245.1	59,000 *	80.1	244.1	58,200*				55
60	77.6	244.0	59,000 *	78.9	243.0	57,600*	80.1	240.9	45,700*	60
65	76.4	242.8	59,000 *	77.6	241.8	57,000*	78.9	239.7	44,500*	65
70	75.2	241.4	58,400	76.4	240.4	56,500*	77.6	238.3	43,400*	70
75	74.0	240.0	52,800	75.2	239.0	53,900	76.4	236.8	42,300*	75
80	72.7	238.4	48,000	73.9	237.4	49,000	75.1	235.2	41,300*	80
85	71.5	236.7	43,900	72.7	235.7	44,700	73.9	233.5	40,400*	85
90	70.2	234.9	40,200	71.4	233.9	41,000	72.6	231.7	39,500*	90
100	67.7	230.9	34,100	68.8	229.9	34,800	70.0	227.6	35,500	100
110	65.1	226.4	29,300	66.2	225.3	29,900	67.4	223.0	30,400	110
120	62.4	221.3	25,300	63.6	220.2	25,800	64.7	217.9	26,300	120
130	59.7	215.5	21,900	60.8	214.4	22,400	61.9	212.0	22,800	130
140	56.9	209.2	19,100	58.0	208.0	19,500	59.0	205.6	19,900	140
150	54.0	202.1	16,700	55.1	200.9	17,100	56.1	198.3	17,400	150
160	51.0	194.2	14,600	52.0	193.0	14,900	53.0	190.3	15,200	160
170	47.8	185.4	12,700	48.9	184.1	13,000	49.8	181.3	13,300	170
180	44.5	175.5	11,100	45.5	174.1	11,400	46.4	171.2	11,600	180
190	40.9	164.4	9,600	42.0	162.9	9,900				190
200	37.1	151.7	8,300	38.1	150.1	8,500				200
210	32.9	137.0	7,100	33.8	135.3	7,300				210
220	28.1	119.6	6,100							220
230	22.4	97.7	5,100							230



# Liftcrane Jib Capacities

New York City Code  
 Jib No. 134 With 12 Ft. 6 in. Strut On  
 Boom No. 82LR  
 149,600 Lb. Counterweight  
 360 Degree Rating

Meets  
 ANSI B30.5  
 Requirements



## 999 SERIES 1

### 30 Ft. JIB

Jib Oper. Rad. Feet	5 Degree Offset			15 Degree Offset			25 Degree Offset			Jib Oper. Rad. Feet
	Boom Ang. Deg.	Jib Point Elev. Feet	Jib Capacity Pounds	Boom Ang. Deg.	Jib Point Elev. Feet	Jib Capacity Pounds	Boom Ang. Deg.	Jib Point Elev. Feet	Jib Capacity Pounds	
<b>220 Ft. BOOM</b>										
50	80.4	256.3	59,000 *							50
55	79.3	255.3	59,000 *	80.5	254.3	58,400*				55
60	78.1	254.2	59,000 *	79.3	253.3	57,800*	80.5	251.2	46,100*	60
65	77.0	253.1	59,000 *	78.1	252.1	57,300*	79.3	250.0	44,900*	65
70	75.8	251.8	58,100	77.0	250.8	56,700*	78.1	248.7	43,800*	70
75	74.6	250.4	52,500	75.8	249.4	53,500	76.9	247.3	42,800*	75
80	73.4	248.9	47,700	74.6	247.9	48,600	75.7	245.7	41,800*	80
85	72.2	247.3	43,500	73.4	246.3	44,400	74.5	244.1	40,900*	85
90	71.0	245.5	39,800	72.2	244.5	40,700	73.3	242.3	40,000*	90
100	68.6	241.7	33,700	69.7	240.7	34,500	70.8	238.5	35,200	100
110	66.1	237.4	28,900	67.2	236.4	29,500	68.3	234.1	30,100	110
120	63.6	232.6	24,900	64.7	231.5	25,400	65.8	229.2	26,000	120
130	61.0	227.1	21,500	62.1	226.0	22,000	63.1	223.7	22,500	130
140	58.4	221.1	18,700	59.4	220.0	19,200	60.5	217.6	19,600	140
150	55.6	214.4	16,300	56.7	213.3	16,700	57.7	210.8	17,000	150
160	52.8	207.0	14,200	53.9	205.8	14,500	54.8	203.2	14,800	160
170	49.9	198.8	12,300	50.9	197.6	12,700	51.8	194.8	12,900	170
180	46.8	189.7	10,700	47.8	188.4	11,000	48.6	185.5	11,200	180
190	43.5	179.5	9,200	44.5	178.1	9,500	45.3	175.0	9,700	190
200	40.1	168.0	7,900	41.0	166.5	8,100				200
210	36.3	155.0	6,800	37.3	153.3	6,900				210
220	32.2	139.9	5,700	33.1	138.1	5,800				220
230	27.6	122.0	4,700							230



# Liftcrane Jib Capacities

New York City Code  
Jib No. 134 With 12 Ft. 6 in. Strut On  
Boom No. 82LR  
149,600 Lb. Counterweight  
360 Degree Rating

Meets  
ANSI B30.5  
Requirements

## 999 SERIES 1

### 30 Ft. JIB

Jib Oper. Rad. Feet	5 Degree Offset			15 Degree Offset			25 Degree Offset			Jib Oper. Rad. Feet
	Boom Ang. Deg.	Jib Point Elev. Feet	Jib Capacity Pounds	Boom Ang. Deg.	Jib Point Elev. Feet	Jib Capacity Pounds	Boom Ang. Deg.	Jib Point Elev. Feet	Jib Capacity Pounds	
<b>230 Ft. BOOM</b>										
50	80.8	266.4	59,000 *							50
55	79.7	265.5	59,000 *	80.8	264.5	58,600*				55
60	78.6	264.5	59,000 *	79.7	263.5	58,000*	80.9	261.4	46,500*	60
65	77.5	263.3	56,000	78.6	262.4	57,500*	79.7	260.2	45,300*	65
70	76.3	262.1	49,600	77.5	261.1	51,200	78.6	259.0	44,200*	70
75	75.2	260.8	44,300	76.3	259.8	45,700	77.5	257.6	43,200*	75
80	74.1	259.3	39,600	75.2	258.3	41,000	76.3	256.2	42,300*	80
85	72.9	257.8	35,700	74.0	256.8	36,900	75.2	254.6	38,100	85
90	71.8	256.1	32,200	72.9	255.1	33,300	74.0	252.9	34,400	90
100	69.4	252.5	26,300	70.6	251.5	27,300	71.6	249.2	28,300	100
110	67.1	248.4	21,700	68.2	247.3	22,500	69.2	245.1	23,300	110
120	64.7	243.7	17,800	65.8	242.7	18,600	66.8	240.4	19,300	120
130	62.2	238.6	14,600	63.3	237.5	15,300	64.3	235.1	15,900	130
140	59.7	232.9	11,900	60.8	231.8	12,500	61.7	229.3	13,100	140
150	57.1	226.6	9,600	58.2	225.4	10,100	59.1	222.9	10,600	150
160	54.5	219.6	7,600	55.5	218.4	8,100	56.4	215.8	8,500	160
170	51.7	211.9	5,800	52.7	210.6	6,200	53.6	208.0	6,600	170
180	48.8	203.3	4,300	49.8	202.1	4,600	50.7	199.3	5,000	180
<b>240 Ft. BOOM</b>										
55	80.1	275.7	59,000 *							55
60	79.0	274.7	59,000 *	80.1	273.7	58,200*				60
65	77.9	273.6	55,400	79.0	272.6	57,100	80.1	270.5	45,700*	65
70	76.9	272.4	49,000	77.9	271.4	50,600	79.0	269.3	44,600*	70
75	75.8	271.1	43,600	76.9	270.1	45,100	77.9	268.0	43,600*	75
80	74.7	269.8	39,000	75.8	268.8	40,400	76.8	266.6	41,700	80
85	73.6	268.3	35,000	74.7	267.3	36,200	75.7	265.1	37,500	85
90	72.5	266.7	31,500	73.5	265.7	32,600	74.6	263.5	33,800	90
100	70.2	263.2	25,600	71.3	262.2	26,600	72.3	259.9	27,700	100
110	68.0	259.2	20,900	69.0	258.2	21,800	70.1	255.9	22,700	110
120	65.7	254.8	17,100	66.7	253.7	17,900	67.7	251.5	18,700	120
130	63.3	249.9	13,900	64.4	248.8	14,600	65.3	246.5	15,300	130
140	60.9	244.5	11,200	62.0	243.3	11,800	62.9	241.0	12,400	140
150	58.5	238.5	8,900	59.5	237.3	9,400	60.4	234.9	10,000	150
160	56.0	231.9	6,800	57.0	230.7	7,400	57.9	228.1	7,800	160
170	53.4	224.6	5,100	54.3	223.4	5,500	55.2	220.7	5,900	170
180							52.5	212.6	4,300	180



# Liftcrane Jib Capacities

New York City Code  
 Jib No. 134 With 12 Ft. 6 in. Strut On  
 Boom No. 82LR  
 149,600 Lb. Counterweight  
 360 Degree Rating

**Meets  
 ANSI B30.5  
 Requirements**

## 999 SERIES 1

### 30 Ft. JIB

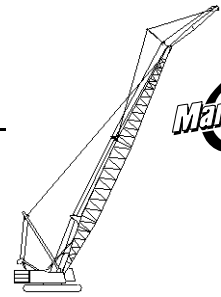
Jib Oper. Rad. Feet	5 Degree Offset			15 Degree Offset			25 Degree Offset			Jib Oper. Rad. Feet
	Boom Ang. Deg.	Jib Point Elev. Feet	Jib Capacity Pounds	Boom Ang. Deg.	Jib Point Elev. Feet	Jib Capacity Pounds	Boom Ang. Deg.	Jib Point Elev. Feet	Jib Capacity Pounds	
<b>250 Ft. BOOM</b>										
55	80.4	285.8	59,000*							55
60	79.4	284.9	59,000*	80.5	283.9	58,400*				60
65	78.4	283.8	54,800	79.4	282.9	56,700	80.5	280.7	46,100*	65
70	77.3	282.7	48,500	78.4	281.7	50,100	79.4	279.6	45,000*	70
75	76.3	281.5	43,100	77.3	280.5	44,600	78.4	278.3	44,000*	75
80	75.2	280.2	38,400	76.3	279.1	39,900	77.3	277.0	41,300	80
85	74.2	278.7	34,400	75.2	277.7	35,700	76.3	275.5	37,000	85
90	73.1	277.2	30,900	74.2	276.2	32,100	75.2	274.0	33,300	90
100	71.0	273.8	25,100	72.0	272.8	26,100	73.0	270.6	27,200	100
110	68.8	270.0	20,400	69.8	269.0	21,300	70.8	266.7	22,200	110
120	66.6	265.8	16,500	67.6	264.7	17,400	68.6	262.5	18,200	120
130	64.4	261.1	13,300	65.4	260.0	14,100	66.3	257.7	14,800	130
140	62.1	255.9	10,600	63.1	254.8	11,300	64.0	252.4	11,900	140
150	59.7	250.2	8,300	60.7	249.1	8,900	61.6	246.6	9,400	150
160	57.3	243.9	6,300	58.3	242.8	6,800	59.2	240.3	7,300	160
170	54.9	237.0	4,500	55.8	235.8	5,000	56.7	233.3	5,400	170
<b>260 Ft. BOOM</b>										
55	80.8	296.0	59,000*							55
60	79.8	295.1	59,000*	80.8	294.1	55,700*				60
65	78.8	294.1	54,300	79.8	293.1	55,500*	80.8	290.9	45,500*	65
70	77.8	293.0	47,900	78.8	292.0	49,700	79.8	289.8	45,400*	70
75	76.8	291.8	42,500	77.8	290.8	44,100	78.8	288.6	44,400*	75
80	75.7	290.5	37,900	76.8	289.5	39,400	77.8	287.3	40,800	80
85	74.7	289.1	33,900	75.7	288.1	35,200	76.7	286.0	36,600	85
90	73.7	287.7	30,400	74.7	286.6	31,600	75.7	284.5	32,900	90
100	71.6	284.4	24,500	72.6	283.4	25,600	73.6	281.2	26,700	100
110	69.6	280.8	19,800	70.5	279.7	20,800	71.5	277.5	21,700	110
120	67.4	276.7	16,000	68.4	275.7	16,800	69.4	273.4	17,700	120
130	65.3	272.2	12,700	66.3	271.1	13,500	67.2	268.8	14,300	130
140	63.1	267.2	10,000	64.1	266.1	10,700	65.0	263.8	11,400	140
150	60.9	261.8	7,700	61.8	260.7	8,300	62.7	258.2	8,900	150
160	58.6	255.8	5,700	59.5	254.6	6,200	60.4	252.2	6,800	160
170				57.2	248.1	4,400	58.0	245.5	4,900	170



# Liftcrane Jib Capacities

New York City Code  
 Jib No. 134 With 12 Ft. 6 in. Strut On  
 Boom No. 82LR  
 149,600 Lb. Counterweight  
 360 Degree Rating

Meets  
 ANSI B30.5  
 Requirements



## 999 SERIES 1

### 40 Ft. JIB

Jib Oper. Rad. Feet	5 Degree Offset			15 Degree Offset			25 Degree Offset			Jib Oper. Rad. Feet
	Boom Ang. Deg.	Jib Point Elev. Feet	Jib Capacity Pounds	Boom Ang. Deg.	Jib Point Elev. Feet	Jib Capacity Pounds	Boom Ang. Deg.	Jib Point Elev. Feet	Jib Capacity Pounds	
<b>120 Ft. BOOM</b>										
40	79.3	166.4	50,300 *							40
45	77.5	165.2	49,100 *	79.9	164.0	44,500*				45
50	75.6	163.9	48,000 *	78.1	162.6	43,600*	80.6	160.1	36,600*	50
55	73.8	162.3	47,000 *	76.2	161.1	42,900*	78.7	158.5	35,200*	55
60	71.9	160.6	46,000 *	74.3	159.3	42,100*	76.8	156.7	33,900*	60
65	70.0	158.7	45,100 *	72.4	157.4	41,400*	74.8	154.8	32,700*	65
70	68.1	156.6	44,200 *	70.5	155.3	40,800*	72.9	152.6	31,600*	70
75	66.2	154.3	43,400 *	68.5	153.0	40,200*	70.9	150.3	30,500*	75
80	64.2	151.8	42,600 *	66.5	150.5	39,600*	68.8	147.7	29,600*	80
85	62.2	149.1	41,900 *	64.5	147.7	39,100*	66.7	144.9	28,700*	85
90	60.1	146.1	41,200 *	62.4	144.7	38,600*	64.6	141.8	27,900*	90
100	55.9	139.5	37,800	58.1	138.0	36,200*	60.2	134.9	26,500*	100
110	51.4	131.6	32,900	53.6	130.0	33,400	55.6	126.8	25,300*	110
120	46.5	122.4	29,000	48.7	120.6	29,300	50.5	117.1	24,300*	120
130	41.3	111.3	25,600	43.3	109.4	25,900	45.0	105.5	23,500*	130
140	35.3	97.8	22,800	37.3	95.6	23,000				140
150	28.3	80.6	20,300							150
<b>130 Ft. BOOM</b>										
40	79.9	176.6	50,700 *							40
45	78.2	175.5	49,600 *	80.5	174.2	44,800*				45
50	76.5	174.2	48,500 *	78.8	173.0	44,000*				50
55	74.8	172.8	47,500 *	77.1	171.5	43,200*	79.4	168.9	35,700*	55
60	73.0	171.2	46,600 *	75.3	169.9	42,500*	77.6	167.3	34,400*	60
65	71.2	169.4	45,700 *	73.5	168.1	41,800*	75.8	165.5	33,200*	65
70	69.5	167.5	44,800 *	71.7	166.1	41,200*	73.9	163.5	32,200*	70
75	67.6	165.3	44,000 *	69.9	164.0	40,600*	72.1	161.3	31,200*	75
80	65.8	163.0	43,200 *	68.0	161.7	40,000*	70.2	158.9	30,200*	80
85	63.9	160.5	42,500 *	66.2	159.1	39,500*	68.3	156.3	29,400*	85
90	62.0	157.8	41,900 *	64.2	156.3	39,000*	66.3	153.5	28,600*	90
100	58.1	151.6	37,500	60.3	150.1	37,600*	62.3	147.1	27,200*	100
110	54.0	144.5	32,700	56.2	142.9	33,200	58.1	139.7	25,900*	110
120	49.7	136.1	28,700	51.8	134.5	29,100	53.6	131.1	24,900*	120
130	45.1	126.4	25,400	47.1	124.6	25,700	48.7	120.9	24,000*	130
140	40.0	114.8	22,500	41.9	112.9	22,800				140
150	34.2	100.8	20,100	36.0	98.5	20,300				150
160	27.4	82.9	17,900							160



# Liftcrane Jib Capacities

New York City Code  
Jib No. 134 With 12 Ft. 6 in. Strut On  
Boom No. 82LR  
149,600 Lb. Counterweight  
360 Degree Rating

Meets  
ANSI B30.5  
Requirements

## 999 SERIES 1

### 40 Ft. JIB

Jib Oper. Rad. Feet	5 Degree Offset			15 Degree Offset			25 Degree Offset			Jib Oper. Rad. Feet
	Boom Ang. Deg.	Jib Point Elev. Feet	Jib Capacity Pounds	Boom Ang. Deg.	Jib Point Elev. Feet	Jib Capacity Pounds	Boom Ang. Deg.	Jib Point Elev. Feet	Jib Capacity Pounds	
<b>140 Ft. BOOM</b>										
40	80.5	186.8	51,100 *							40
45	78.9	185.8	50,000 *							45
50	77.2	184.6	49,000 *	79.4	183.3	44,200*				50
55	75.6	183.2	48,000 *	77.8	181.9	43,500*	80.0	179.3	36,200*	55
60	74.0	181.7	47,100 *	76.1	180.4	42,800*	78.3	177.7	34,900*	60
65	72.3	180.0	46,200 *	74.5	178.7	42,200*	76.6	176.0	33,800*	65
70	70.6	178.2	45,400 *	72.8	176.9	41,600*	74.9	174.2	32,700*	70
75	68.9	176.2	44,600 *	71.1	174.9	41,000*	73.2	172.1	31,700*	75
80	67.2	174.0	43,800 *	69.4	172.7	40,400*	71.4	169.9	30,800*	80
85	65.5	171.7	43,100 *	67.6	170.3	39,900*	69.6	167.5	30,000*	85
90	63.7	169.2	42,400 *	65.8	167.7	39,400*	67.8	164.9	29,200*	90
100	60.1	163.5	37,200	62.2	162.0	37,800	64.1	159.0	27,800*	100
110	56.3	156.9	32,400	58.4	155.4	32,900	60.2	152.2	26,500*	110
120	52.4	149.3	28,400	54.4	147.7	28,800	56.1	144.4	25,500*	120
130	48.2	140.5	25,100	50.1	138.8	25,400	51.8	135.3	24,500*	130
140	43.7	130.3	22,200	45.6	128.4	22,600	47.1	124.6	22,800	140
150	38.8	118.3	19,800	40.5	116.2	20,100				150
160	33.2	103.7	17,700	34.9	101.3	17,900				160
170	26.6	85.1	15,800							170
<b>150 Ft. BOOM</b>										
45	79.5	196.0	50,400 *							45
50	77.9	194.9	49,400 *	80.0	193.6	44,500*				50
55	76.4	193.6	48,400 *	78.5	192.3	43,800*	80.5	189.6	36,600*	55
60	74.8	192.2	47,500 *	76.9	190.8	43,100*	79.0	188.2	35,400*	60
65	73.3	190.6	46,700 *	75.3	189.3	42,500*	77.4	186.6	34,300*	65
70	71.7	188.9	45,900 *	73.7	187.5	41,900*	75.7	184.8	33,200*	70
75	70.1	187.0	45,100 *	72.1	185.6	41,300*	74.1	182.9	32,300*	75
80	68.5	185.0	44,400 *	70.5	183.6	40,800*	72.5	180.8	31,400*	80
85	66.9	182.8	43,700 *	68.9	181.4	40,300*	70.8	178.5	30,500*	85
90	65.2	180.4	43,000 *	67.2	179.0	39,800*	69.1	176.1	29,700*	90
100	61.8	175.1	36,900	63.8	173.6	37,600	65.6	170.7	28,300*	100
110	58.3	169.0	32,100	60.3	167.5	32,600	62.0	164.4	27,100*	110
120	54.7	162.0	28,100	56.6	160.4	28,600	58.3	157.2	26,000*	120
130	50.9	154.0	24,800	52.7	152.3	25,200	54.3	148.9	25,100*	130
140	46.8	144.8	21,900	48.6	143.0	22,300	50.1	139.3	22,600	140
150	42.5	134.1	19,500	44.2	132.2	19,800	45.6	128.2	20,000	150
160	37.7	121.6	17,400	39.3	119.4	17,600				160
170	32.3	106.4	15,500	33.8	104.0	15,700				170
180	25.8	87.3	13,800							180



# Liftcrane Jib Capacities

New York City Code  
Jib No. 134 With 12 Ft. 6 in. Strut On  
Boom No. 82LR  
149,600 Lb. Counterweight  
360 Degree Rating

Meets  
ANSI B30.5  
Requirements

## 999 SERIES 1

### 40 Ft. JIB

Jib Oper. Rad. Feet	5 Degree Offset			15 Degree Offset			25 Degree Offset			Jib Oper. Rad. Feet
	Boom Ang. Deg.	Jib Point Elev. Feet	Jib Capacity Pounds	Boom Ang. Deg.	Jib Point Elev. Feet	Jib Capacity Pounds	Boom Ang. Deg.	Jib Point Elev. Feet	Jib Capacity Pounds	
<b>160 Ft. BOOM</b>										
45	80.0	206.2	50,800 *							45
50	78.5	205.1	49,800 *	80.5	203.8	44,700*				50
55	77.1	203.9	48,900 *	79.1	202.6	44,000*				55
60	75.6	202.6	48,000 *	77.6	201.2	43,400*	79.5	198.5	35,800*	60
65	74.1	201.1	47,100 *	76.1	199.8	42,800*	78.0	197.0	34,700*	65
70	72.6	199.5	46,400 *	74.6	198.1	42,200*	76.5	195.4	33,700*	70
75	71.1	197.7	45,600 *	73.1	196.3	41,600*	75.0	193.6	32,700*	75
80	69.6	195.8	44,900 *	71.5	194.4	41,100*	73.4	191.6	31,900*	80
85	68.1	193.7	44,200 *	70.0	192.3	40,600*	71.8	189.5	31,000*	85
90	66.5	191.5	42,500	68.4	190.0	40,100*	70.3	187.2	30,300*	90
100	63.4	186.5	36,500	65.2	185.0	37,200	67.0	182.1	28,800*	100
110	60.1	180.8	31,600	61.9	179.3	32,200	63.7	176.2	27,600*	110
120	56.7	174.3	27,600	58.5	172.7	28,100	60.2	169.6	26,500*	120
130	53.2	166.9	24,300	55.0	165.3	24,700	56.5	161.9	25,100	130
140	49.5	158.5	21,400	51.2	156.8	21,800	52.7	153.2	22,200	140
150	45.5	148.9	19,000	47.2	147.0	19,300	48.6	143.2	19,600	150
160	41.3	137.8	16,900	42.9	135.8	17,200				160
170	36.7	124.8	15,000	38.2	122.5	15,300				170
180	31.4	109.2	13,400	32.8	106.6	13,500				180
190	25.1	89.4	11,900							190



# Liftcrane Jib Capacities

New York City Code  
 Jib No. 134 With 12 Ft. 6 in. Strut On  
 Boom No. 82LR  
 149,600 Lb. Counterweight  
 360 Degree Rating

Meets  
 ANSI B30.5  
 Requirements

## 999 SERIES 1

### 40 Ft. JIB

Jib Oper. Rad. Feet	5 Degree Offset			15 Degree Offset			25 Degree Offset			Jib Oper. Rad. Feet
	Boom Ang. Deg.	Jib Point Elev. Feet	Jib Capacity Pounds	Boom Ang. Deg.	Jib Point Elev. Feet	Jib Capacity Pounds	Boom Ang. Deg.	Jib Point Elev. Feet	Jib Capacity Pounds	
<b>170 Ft. BOOM</b>										
45	80.5	216.4	51,100 *							45
50	79.1	215.4	50,200 *							50
55	77.7	214.2	49,300 *	79.6	212.9	44,300*				55
60	76.3	212.9	48,400 *	78.2	211.6	43,700*	80.1	208.9	36,200*	60
65	74.9	211.5	47,600 *	76.8	210.2	43,100*	78.6	207.5	35,100*	65
70	73.5	210.0	46,800 *	75.3	208.6	42,500*	77.2	205.9	34,100*	70
75	72.1	208.3	46,100 *	73.9	206.9	41,900*	75.7	204.2	33,200*	75
80	70.6	206.5	45,300 *	72.5	205.1	41,400*	74.3	202.3	32,300*	80
85	69.2	204.5	44,700 *	71.0	203.1	40,900*	72.8	200.3	31,500*	85
90	67.7	202.4	42,200	69.5	201.0	40,500*	71.3	198.1	30,700*	90
100	64.7	197.7	36,100	66.5	196.3	36,900	68.2	193.3	29,300*	100
110	61.7	192.4	31,200	63.4	190.9	31,900	65.1	187.9	28,100*	110
120	58.5	186.3	27,300	60.2	184.8	27,800	61.8	181.6	27,000*	120
130	55.2	179.4	23,900	56.9	177.8	24,400	58.5	174.6	24,900	130
140	51.8	171.7	21,100	53.5	170.0	21,500	54.9	166.6	21,900	140
150	48.2	162.9	18,700	49.8	161.1	19,000	51.2	157.5	19,300	150
160	44.4	152.9	16,500	46.0	151.0	16,900	47.2	147.1	17,100	160
170	40.2	141.3	14,700	41.8	139.3	15,000				170
180	35.7	127.9	13,000	37.2	125.6	13,200				180
190	30.6	111.8	11,600							190
200	24.5	91.5	10,200							200

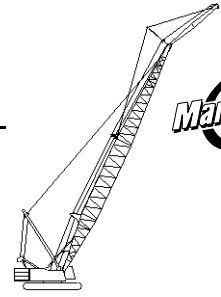




# Liftcrane Jib Capacities

New York City Code  
 Jib No. 134 With 12 Ft. 6 in. Strut On  
 Boom No. 82LR  
 149,600 Lb. Counterweight  
 360 Degree Rating

Meets  
 ANSI B30.5  
 Requirements



## 999 SERIES 1

### 40 Ft. JIB

Jib Oper. Rad. Feet	5 Degree Offset			15 Degree Offset			25 Degree Offset			Jib Oper. Rad. Feet
	Boom Ang. Deg.	Jib Point Elev. Feet	Jib Capacity Pounds	Boom Ang. Deg.	Jib Point Elev. Feet	Jib Capacity Pounds	Boom Ang. Deg.	Jib Point Elev. Feet	Jib Capacity Pounds	
<b>180 Ft. BOOM</b>										
45	80.9	226.6	51,400 *							45
50	79.6	225.6	50,500 *							50
55	78.3	224.5	49,600 *	80.1	223.2	44,500*				55
60	76.9	223.3	48,800 *	78.7	221.9	43,900*	80.5	219.2	36,600*	60
65	75.6	221.9	48,000 *	77.4	220.6	43,300*	79.2	217.8	35,500*	65
70	74.3	220.5	47,200 *	76.0	219.1	42,800*	77.8	216.3	34,500*	70
75	72.9	218.9	46,500 *	74.7	217.5	42,200*	76.4	214.7	33,600*	75
80	71.5	217.2	45,800 *	73.3	215.8	41,700*	75.0	212.9	32,800*	80
85	70.2	215.3	45,100 *	71.9	213.9	41,200*	73.6	211.0	32,000*	85
90	68.8	213.3	41,900	70.5	211.9	40,800*	72.2	209.0	31,200*	90
100	65.9	208.9	35,800	67.7	207.4	36,600	69.3	204.5	29,800*	100
110	63.1	203.8	30,900	64.8	202.3	31,600	66.4	199.3	28,600*	110
120	60.1	198.1	26,900	61.8	196.6	27,500	63.3	193.5	27,500*	120
130	57.0	191.7	23,600	58.7	190.1	24,100	60.2	186.9	24,600	130
140	53.8	184.5	20,700	55.5	182.8	21,200	56.9	179.4	21,600	140
150	50.5	176.3	18,300	52.1	174.6	18,700	53.5	171.1	19,100	150
160	47.0	167.2	16,200	48.6	165.3	16,500	49.8	161.6	16,800	160
170	43.3	156.7	14,300	44.8	154.8	14,600	46.0	150.8	14,900	170
180	39.3	144.8	12,700	40.7	142.7	12,900				180
190	34.9	131.0	11,200	36.2	128.6	11,400				190
200	29.9	114.4	9,900							200
210	23.9	93.5	8,700							210



# Liftcrane Jib Capacities

New York City Code  
 Jib No. 134 With 12 Ft. 6 in. Strut On  
 Boom No. 82LR  
 149,600 Lb. Counterweight  
 360 Degree Rating

Meets  
ANSI B30.5  
Requirements

## 999 SERIES 1

### 40 Ft. JIB

Jib Oper. Rad. Feet	5 Degree Offset			15 Degree Offset			25 Degree Offset			Jib Oper. Rad. Feet
	Boom Ang. Deg.	Jib Point Elev. Feet	Jib Capacity Pounds	Boom Ang. Deg.	Jib Point Elev. Feet	Jib Capacity Pounds	Boom Ang. Deg.	Jib Point Elev. Feet	Jib Capacity Pounds	
<b>190 Ft. BOOM</b>										
50	80.0	235.8	50,800 *							50
55	78.8	234.7	50,000 *	80.5	233.4	44,700*				55
60	77.5	233.6	49,100 *	79.2	232.2	44,100*	81.0	229.5	36,900*	60
65	76.2	232.3	48,400 *	77.9	230.9	43,600*	79.7	228.2	35,900*	65
70	75.0	230.9	47,600 *	76.7	229.5	43,000*	78.3	226.7	34,900*	70
75	73.7	229.4	46,900 *	75.4	228.0	42,500*	77.0	225.2	34,000*	75
80	72.4	227.7	46,200 *	74.1	226.4	42,000*	75.7	223.5	33,200*	80
85	71.1	226.0	45,200	72.7	224.6	41,500*	74.4	221.7	32,400*	85
90	69.7	224.1	41,500	71.4	222.7	41,100*	73.0	219.8	31,600*	90
100	67.1	219.9	35,400	68.7	218.4	36,300	70.3	215.5	30,300*	100
110	64.3	215.1	30,600	66.0	213.6	31,300	67.5	210.6	29,000*	110
120	61.5	209.7	26,600	63.1	208.2	27,200	64.6	205.1	27,800	120
130	58.6	203.7	23,200	60.2	202.1	23,800	61.7	198.9	24,300	130
140	55.6	196.9	20,400	57.2	195.3	20,900	58.6	192.0	21,300	140
150	52.5	189.3	18,000	54.1	187.6	18,400	55.4	184.2	18,800	150
160	49.3	180.8	15,800	50.8	179.1	16,200	52.1	175.4	16,500	160
170	45.9	171.3	14,000	47.4	169.4	14,300	48.6	165.6	14,600	170
180	42.3	160.5	12,300	43.7	158.5	12,600	44.8	154.4	12,800	180
190	38.4	148.2	10,900	39.7	146.0	11,100				190
200	34.0	133.9	9,500	35.3	131.5	9,700				200
210	29.2	116.9	8,300							210
220	23.3	95.5	7,200							220



# Liftcrane Jib Capacities

Meets  
 ANSI B30.5  
 Requirements

New York City Code  
 Jib No. 134 With 12 Ft. 6 in. Strut On  
 Boom No. 82LR  
 149,600 Lb. Counterweight  
 360 Degree Rating

## 999 SERIES 1

### 40 Ft. JIB

Jib Oper. Rad. Feet	5 Degree Offset			15 Degree Offset			25 Degree Offset			Jib Oper. Rad. Feet
	Boom Ang. Deg.	Jib Point Elev. Feet	Jib Capacity Pounds	Boom Ang. Deg.	Jib Point Elev. Feet	Jib Capacity Pounds	Boom Ang. Deg.	Jib Point Elev. Feet	Jib Capacity Pounds	
<b>200 Ft. BOOM</b>										
50	80.5	246.0	51,100 *							50
55	79.2	245.0	50,300 *	80.9	243.6	44,900*				55
60	78.0	243.9	49,500 *	79.7	242.5	44,300*				60
65	76.8	242.6	48,700 *	78.5	241.3	43,800*	80.1	238.5	36,200*	65
70	75.6	241.3	48,000 *	77.2	239.9	43,200*	78.9	237.1	35,300*	70
75	74.4	239.9	47,300 *	76.0	238.5	42,700*	77.6	235.6	34,400*	75
80	73.1	238.3	46,600 *	74.7	236.9	42,200*	76.3	234.0	33,600*	80
85	71.9	236.6	44,700	73.5	235.2	41,800*	75.1	232.3	32,800*	85
90	70.6	234.8	41,100	72.2	233.4	41,300*	73.8	230.5	32,100*	90
100	68.1	230.8	35,000	69.7	229.3	35,800	71.2	226.4	30,700*	100
110	65.5	226.2	30,100	67.0	224.8	30,800	68.5	221.8	29,500*	110
120	62.8	221.1	26,100	64.4	219.6	26,700	65.8	216.5	27,400	120
130	60.1	215.4	22,700	61.6	213.9	23,300	63.0	210.7	23,900	130
140	57.3	209.1	19,900	58.8	207.4	20,400	60.1	204.2	20,900	140
150	54.4	202.0	17,400	55.9	200.3	17,900	57.2	196.9	18,300	150
160	51.4	194.1	15,300	52.8	192.3	15,700	54.1	188.8	16,100	160
170	48.2	185.2	13,500	49.6	183.4	13,800	50.8	179.7	14,100	170
180	44.9	175.4	11,800	46.3	173.4	12,100	47.4	169.5	12,400	180
190	41.3	164.2	10,300	42.7	162.2	10,600				190
200	37.5	151.5	9,000	38.8	149.3	9,300				200
210	33.3	136.8	7,800	34.5	134.3	8,000				210
220	28.5	119.3	6,700							220
230	22.8	97.4	5,700							230



# Liftcrane Jib Capacities

New York City Code  
 Jib No. 134 With 12 Ft. 6 in. Strut On  
 Boom No. 82LR  
 149,600 Lb. Counterweight  
 360 Degree Rating

Meets  
 ANSI B30.5  
 Requirements

## 999 SERIES 1

### 40 Ft. JIB

Jib Oper. Rad. Feet	5 Degree Offset			15 Degree Offset			25 Degree Offset			Jib Oper. Rad. Feet
	Boom Ang. Deg.	Jib Point Elev. Feet	Jib Capacity Pounds	Boom Ang. Deg.	Jib Point Elev. Feet	Jib Capacity Pounds	Boom Ang. Deg.	Jib Point Elev. Feet	Jib Capacity Pounds	
<b>210 Ft. BOOM</b>										
50	80.8	256.1	51,400 *							50
55	79.7	255.2	50,600 *							55
60	78.5	254.1	49,800 *	80.1	252.7	44,500*				60
65	77.4	253.0	49,000 *	78.9	251.6	44,000*	80.5	248.8	36,600*	65
70	76.2	251.7	48,300 *	77.8	250.3	43,500*	79.3	247.5	35,600*	70
75	75.0	250.3	47,600 *	76.6	248.9	43,000*	78.1	246.1	34,800*	75
80	73.8	248.8	47,000 *	75.4	247.4	42,500*	76.9	244.5	34,000*	80
85	72.6	247.2	44,400	74.2	245.7	42,000*	75.7	242.9	33,200*	85
90	71.4	245.4	40,700	73.0	244.0	41,600*	74.5	241.1	32,400*	90
100	69.0	241.6	34,600	70.5	240.2	35,500	72.0	237.2	31,100*	100
110	66.5	237.3	29,700	68.0	235.8	30,500	69.5	232.8	29,900*	110
120	64.0	232.4	25,700	65.5	230.9	26,400	66.9	227.9	27,000	120
130	61.4	227.0	22,300	62.9	225.5	22,900	64.2	222.3	23,500	130
140	58.7	221.0	19,500	60.2	219.4	20,000	61.5	216.2	20,500	140
150	56.0	214.3	17,000	57.4	212.7	17,500	58.7	209.3	18,000	150
160	53.2	206.9	14,900	54.6	205.2	15,400	55.8	201.7	15,800	160
170	50.2	198.7	13,100	51.6	196.9	13,500	52.8	193.3	13,800	170
180	47.2	189.5	11,400	48.5	187.7	11,800	49.6	183.9	12,100	180
190	43.9	179.3	10,000	45.2	177.3	10,300	46.3	173.3	10,500	190
200	40.4	167.8	8,600	41.7	165.7	8,900				200
210	36.7	154.8	7,400	37.9	152.5	7,700				210
220	32.6	139.7	6,400	33.7	137.1	6,500				220
230	27.9	121.7	5,400							230
240	22.3	99.3	4,400							240



# Liftcrane Jib Capacities

New York City Code  
Jib No. 134 With 12 Ft. 6 in. Strut On  
Boom No. 82LR  
149,600 Lb. Counterweight  
360 Degree Rating

Meets  
ANSI B30.5  
Requirements

## 999 SERIES 1

### 40 Ft. JIB

Jib Oper. Rad. Feet	5 Degree Offset			15 Degree Offset			25 Degree Offset			Jib Oper. Rad. Feet
	Boom Ang. Deg.	Jib Point Elev. Feet	Jib Capacity Pounds	Boom Ang. Deg.	Jib Point Elev. Feet	Jib Capacity Pounds	Boom Ang. Deg.	Jib Point Elev. Feet	Jib Capacity Pounds	
<b>220 Ft. BOOM</b>										
55	80.1	265.4	50,900 *							55
60	79.0	264.4	50,100 *	80.5	263.0	44,700*				60
65	77.8	263.2	49,400 *	79.4	261.8	44,200*	80.9	259.0	36,900*	65
70	76.7	262.0	48,700 *	78.2	260.6	43,700*	79.7	257.8	36,000*	70
75	75.6	260.7	45,500	77.1	259.3	43,200*	78.6	256.4	35,100*	75
80	74.4	259.2	40,900	76.0	257.8	42,500	77.4	255.0	34,300*	80
85	73.3	257.7	36,800	74.8	256.3	38,400	76.3	253.4	33,500*	85
90	72.2	256.0	33,300	73.6	254.6	34,700	75.1	251.7	32,800*	90
100	69.8	252.4	27,400	71.3	250.9	28,700	72.7	248.0	29,900	100
110	67.5	248.2	22,700	68.9	246.8	23,800	70.3	243.8	24,900	110
120	65.0	243.6	18,900	66.5	242.1	19,800	67.9	239.1	20,800	120
130	62.6	238.5	15,700	64.0	236.9	16,500	65.4	233.8	17,300	130
140	60.1	232.7	12,900	61.5	231.2	13,700	62.8	228.0	14,400	140
150	57.5	226.4	10,600	58.9	224.8	11,300	60.1	221.5	11,900	150
160	54.8	219.4	8,600	56.2	217.8	9,200	57.4	214.3	9,700	160
170	52.1	211.7	6,800	53.4	210.0	7,300	54.6	206.4	7,800	170
180	49.2	203.2	5,200	50.5	201.4	5,700	51.6	197.7	6,100	180
190				47.5	191.8	4,200	48.5	187.9	4,600	190
<b>230 Ft. BOOM</b>										
55	80.5	275.6	51,100 *							55
60	79.4	274.6	50,400 *	80.9	273.2	44,900*				60
65	78.3	273.5	49,700 *	79.8	272.1	44,400*				65
70	77.2	272.3	49,000 *	78.7	270.9	43,900*	80.1	268.1	36,300*	70
75	76.1	271.0	45,000	77.6	269.6	43,400*	79.0	266.8	35,400*	75
80	75.0	269.6	40,300	76.5	268.2	42,100	77.9	265.4	34,600*	80
85	73.9	268.2	36,300	75.4	266.7	37,900	76.8	263.9	33,900*	85
90	72.8	266.6	32,800	74.3	265.1	34,300	75.7	262.2	33,200*	90
100	70.6	263.1	26,900	72.0	261.6	28,200	73.4	258.7	29,500	100
110	68.3	259.1	22,200	69.8	257.6	23,300	71.1	254.7	24,400	110
120	66.0	254.7	18,300	67.4	253.2	19,300	68.8	250.1	20,300	120
130	63.7	249.8	15,100	65.1	248.2	16,000	66.4	245.1	16,900	130
140	61.3	244.3	12,400	62.7	242.8	13,200	63.9	239.6	13,900	140
150	58.8	238.3	10,000	60.2	236.7	10,800	61.4	233.5	11,400	150
160	56.3	231.7	8,000	57.6	230.1	8,700	58.8	226.7	9,200	160
170	53.7	224.4	6,200	55.0	222.7	6,800	56.2	219.2	7,300	170
180	51.0	216.4	4,700	52.3	214.7	5,200	53.4	211.0	5,600	180
190							50.5	202.0	4,100	190



# Liftcrane Jib Capacities

New York City Code  
Jib No. 134 With 12 Ft. 6 in. Strut On  
Boom No. 82LR  
149,600 Lb. Counterweight  
360 Degree Rating

Meets  
ANSI B30.5  
Requirements

## 999 SERIES 1

### 40 Ft. JIB

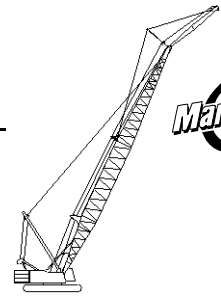
Jib Oper. Rad. Feet	5 Degree Offset			15 Degree Offset			25 Degree Offset			Jib Oper. Rad. Feet
	Boom Ang. Deg.	Jib Point Elev. Feet	Jib Capacity Pounds	Boom Ang. Deg.	Jib Point Elev. Feet	Jib Capacity Pounds	Boom Ang. Deg.	Jib Point Elev. Feet	Jib Capacity Pounds	
<b>240 Ft. BOOM</b>										
55	80.8	285.7	51,400 *							55
60	79.8	284.8	50,600 *							60
65	78.7	283.7	49,900 *	80.1	282.3	44,500*				65
70	77.7	282.6	49,300 *	79.1	281.2	44,000*	80.5	278.3	36,600*	70
75	76.6	281.4	44,400	78.0	280.0	43,600*	79.4	277.1	35,700*	75
80	75.6	280.0	39,700	77.0	278.6	41,500	78.4	275.7	34,900*	80
85	74.5	278.6	35,700	75.9	277.2	37,300	77.3	274.3	34,200*	85
90	73.5	277.1	32,100	74.9	275.6	33,700	76.2	272.7	33,500*	90
100	71.3	273.7	26,200	72.7	272.3	27,600	74.0	269.3	28,900	100
110	69.1	269.9	21,500	70.5	268.4	22,700	71.8	265.5	23,900	110
120	66.9	265.7	17,600	68.3	264.2	18,700	69.6	261.1	19,700	120
130	64.7	261.0	14,400	66.0	259.5	15,300	67.3	256.4	16,300	130
140	62.4	255.8	11,700	63.7	254.2	12,500	65.0	251.1	13,300	140
150	60.1	250.1	9,300	61.4	248.5	10,100	62.6	245.2	10,800	150
160	57.7	243.8	7,300	59.0	242.1	8,000	60.1	238.8	8,600	160
170	55.2	236.9	5,500	56.5	235.2	6,100	57.6	231.8	6,700	170
180				53.9	227.6	4,500	55.0	224.0	5,000	180
<b>250 Ft. BOOM</b>										
60	80.1	295.0	50,900 *							60
65	79.1	294.0	50,200 *	80.5	292.6	44,700*				65
70	78.1	292.9	49,300	79.5	291.5	44,200*	80.8	288.6	36,400*	70
75	77.1	291.7	43,800	78.5	290.3	43,800*	79.8	287.4	36,000*	75
80	76.1	290.4	39,200	77.4	289.0	41,000	78.8	286.1	35,200*	80
85	75.1	289.0	35,100	76.4	287.6	36,800	77.8	284.7	34,500*	85
90	74.0	287.5	31,600	75.4	286.1	33,200	76.7	283.2	33,800*	90
100	72.0	284.3	25,700	73.3	282.9	27,100	74.6	279.9	28,500	100
110	69.9	280.7	20,900	71.2	279.2	22,200	72.5	276.2	23,400	110
120	67.8	276.6	17,100	69.1	275.1	18,200	70.3	272.1	19,200	120
130	65.6	272.1	13,800	66.9	270.6	14,800	68.2	267.5	15,800	130
140	63.4	267.1	11,100	64.7	265.6	12,000	65.9	262.4	12,800	140
150	61.2	261.6	8,700	62.5	260.1	9,500	63.6	256.8	10,300	150
160	58.9	255.7	6,700	60.2	254.0	7,400	61.3	250.7	8,100	160
170	56.6	249.1	4,900	57.8	247.4	5,600	58.9	244.1	6,200	170
180							56.4	236.7	4,400	180



# Liftcrane Jib Capacities

New York City Code  
 Jib No. 134 With 12 Ft. 6 in. Strut On  
 Boom No. 82LR  
 149,600 Lb. Counterweight  
 360 Degree Rating

Meets  
 ANSI B30.5  
 Requirements



## 999 SERIES 1

### 40 Ft. JIB

Jib Oper. Rad. Feet	5 Degree Offset			15 Degree Offset			25 Degree Offset			Jib Oper. Rad. Feet
	Boom Ang. Deg.	Jib Point Elev. Feet	Jib Capacity Pounds	Boom Ang. Deg.	Jib Point Elev. Feet	Jib Capacity Pounds	Boom Ang. Deg.	Jib Point Elev. Feet	Jib Capacity Pounds	
<b>260 Ft. BOOM</b>										
60	80.4	305.1	51,100 *							60
65	79.5	304.2	50,500 *	80.8	302.8	44,800*				65
70	78.5	303.1	48,800	79.8	301.7	44,400*				70
75	77.5	302.0	43,300	78.9	300.5	43,900*	80.2	297.7	34,900*	75
80	76.6	300.7	38,600	77.9	299.3	40,600	79.2	296.4	34,900*	80
85	75.6	299.4	34,600	76.9	298.0	36,400	78.2	295.1	34,800*	85
90	74.6	298.0	31,000	75.9	296.5	32,700	77.2	293.6	34,100*	90
100	72.6	294.9	25,100	73.9	293.4	26,600	75.2	290.5	28,000	100
110	70.6	291.3	20,400	71.9	289.9	21,700	73.1	286.9	22,900	110
120	68.6	287.4	16,500	69.8	285.9	17,600	71.0	282.9	18,800	120
130	66.5	283.1	13,300	67.8	281.6	14,300	68.9	278.5	15,300	130
140	64.4	278.3	10,500	65.6	276.8	11,400	66.8	273.7	12,300	140
150	62.2	273.1	8,200	63.5	271.5	9,000	64.6	268.3	9,800	150
160	60.1	267.4	6,100	61.3	265.8	6,900	62.4	262.5	7,600	160
170	57.8	261.1	4,300	59.0	259.5	5,000	60.1	256.1	5,600	170



# Liftcrane Jib Capacities

New York City Code  
Jib No. 134 With 12 Ft. 6 in. Strut On  
Boom No. 82LR  
149,600 Lb. Counterweight  
360 Degree Rating

Meets  
ANSI B30.5  
Requirements

## 999 SERIES 1

### 50 Ft. JIB

Jib Oper. Rad. Feet	5 Degree Offset			15 Degree Offset			25 Degree Offset			Jib Oper. Rad. Feet
	Boom Ang. Deg.	Jib Point Elev. Feet	Jib Capacity Pounds	Boom Ang. Deg.	Jib Point Elev. Feet	Jib Capacity Pounds	Boom Ang. Deg.	Jib Point Elev. Feet	Jib Capacity Pounds	
<b>120 Ft. BOOM</b>										
40	80.3	176.6	41,700 *							40
45	78.6	175.5	40,700 *							45
50	76.8	174.2	39,700 *	79.7	172.8	36,100*				50
55	75.1	172.8	38,900 *	78.0	171.3	35,400*				55
60	73.4	171.2	38,000 *	76.2	169.7	34,800*	79.5	167.0	26,700*	60
65	71.6	169.4	37,300 *	74.4	167.9	34,200*	77.7	165.2	26,700*	65
70	69.8	167.4	36,500 *	72.6	166.0	33,600*	75.9	163.2	26,700*	70
75	68.0	165.3	35,800 *	70.8	163.8	33,000*	74.0	161.1	25,800*	75
80	66.2	163.0	35,100 *	69.0	161.5	32,500*	72.1	158.7	25,000*	80
85	64.3	160.5	34,500 *	67.1	158.9	32,000*	70.2	156.1	24,300*	85
90	62.4	157.7	33,900 *	65.2	156.1	31,600*	68.2	153.4	23,600*	90
100	58.5	151.6	32,800 *	61.2	149.9	29,600*	64.2	147.1	22,300*	100
110	54.4	144.4	31,800 *	57.1	142.7	27,500*	60.0	139.8	21,300*	110
120	50.1	136.1	29,300	52.7	134.3	25,700*	55.5	131.2	20,400*	120
130	45.4	126.4	25,900	47.9	124.4	24,200*	50.6	121.1	19,600*	130
140	40.3	114.8	23,100	42.7	112.6	22,900*	45.3	109.0	18,900*	140
150	34.6	100.7	20,700	36.9	98.2	20,900				150
160	27.7	82.8	18,500							160
<b>130 Ft. BOOM</b>										
45	79.2	185.7	41,000 *							45
50	77.6	184.5	40,100 *	80.3	183.1	36,300*				50
55	75.9	183.2	39,300 *	78.7	181.7	35,700*				55
60	74.3	181.7	38,500 *	77.0	180.2	35,000*	80.1	177.4	27,500*	60
65	72.6	180.0	37,700 *	75.3	178.5	34,500*	78.4	175.7	27,500*	65
70	71.0	178.2	37,000 *	73.7	176.7	33,900*	76.7	173.9	27,100*	70
75	69.3	176.2	36,300 *	71.9	174.7	33,400*	75.0	171.9	26,200*	75
80	67.6	174.0	35,700 *	70.2	172.5	32,900*	73.2	169.7	25,500*	80
85	65.8	171.7	35,000 *	68.5	170.1	32,400*	71.4	167.3	24,700*	85
90	64.1	169.1	34,400 *	66.7	167.5	31,900*	69.6	164.7	24,000*	90
100	60.4	163.4	33,300 *	63.0	161.8	30,700*	65.9	158.9	22,800*	100
110	56.7	156.9	32,300 *	59.2	155.1	28,500*	62.0	152.2	21,800*	110
120	52.7	149.3	29,000	55.2	147.4	26,700*	57.9	144.4	20,800*	120
130	48.5	140.5	25,700	51.0	138.5	25,100*	53.6	135.4	20,000*	130
140	44.0	130.3	22,800	46.4	128.2	23,200	48.9	124.8	19,300*	140
150	39.1	118.2	20,400	41.4	115.9	20,700				150
160	33.5	103.6	18,300	35.6	100.9	18,500				160
170	26.9	85.0	16,400							170





# Liftcrane Jib Capacities

New York City Code  
Jib No. 134 With 12 Ft. 6 in. Strut On  
Boom No. 82LR  
149,600 Lb. Counterweight  
360 Degree Rating

Meets  
ANSI B30.5  
Requirements

## 999 SERIES 1

### 50 Ft. JIB

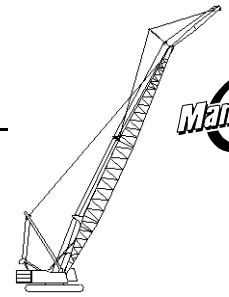
Jib Oper. Rad. Feet	5 Degree Offset			15 Degree Offset			25 Degree Offset			Jib Oper. Rad. Feet
	Boom Ang. Deg.	Jib Point Elev. Feet	Jib Capacity Pounds	Boom Ang. Deg.	Jib Point Elev. Feet	Jib Capacity Pounds	Boom Ang. Deg.	Jib Point Elev. Feet	Jib Capacity Pounds	
<b>140 Ft. BOOM</b>										
45	79.8	196.0	41,400 *							45
50	78.2	194.8	40,500 *							50
55	76.7	193.6	39,700 *	79.3	192.1	35,900*				55
60	75.1	192.1	38,900 *	77.7	190.6	35,300*	80.7	187.8	28,100*	60
65	73.6	190.6	38,200 *	76.2	189.1	34,700*	79.1	186.2	28,100*	65
70	72.0	188.9	37,400 *	74.6	187.3	34,200*	77.5	184.5	27,500*	70
75	70.4	187.0	36,800 *	73.0	185.4	33,700*	75.8	182.6	26,600*	75
80	68.8	184.9	36,100 *	71.3	183.4	33,200*	74.2	180.5	25,900*	80
85	67.2	182.7	35,500 *	69.7	181.2	32,700*	72.5	178.3	25,200*	85
90	65.5	180.3	34,900 *	68.0	178.8	32,300*	70.8	175.9	24,500*	90
100	62.1	175.0	33,800 *	64.6	173.4	31,400*	67.3	170.5	23,300*	100
110	58.6	168.9	32,700	61.1	167.2	29,500*	63.7	164.2	22,200*	110
120	55.0	161.9	28,700	57.4	160.2	27,700*	60.0	157.1	21,300*	120
130	51.2	153.9	25,400	53.5	152.0	25,800	56.0	148.9	20,500*	130
140	47.1	144.7	22,500	49.4	142.7	22,900	51.8	139.4	19,800*	140
150	42.8	134.1	20,100	45.0	131.9	20,400	47.3	128.3	19,200*	150
160	38.0	121.5	18,000	40.1	119.1	18,300				160
170	32.6	106.4	16,100	34.5	103.6	16,300				170
180	26.1	87.2	14,400							180
<b>150 Ft. BOOM</b>										
45	80.3	206.2	41,700 *							45
50	78.8	205.1	40,800 *							50
55	77.4	203.9	40,000 *	79.8	202.4	36,100*				55
60	75.9	202.6	39,300 *	78.4	201.0	35,500*				60
65	74.4	201.1	38,500 *	76.9	199.5	35,000*	79.6	196.6	28,700*	65
70	72.9	199.4	37,900 *	75.4	197.9	34,500*	78.1	195.0	27,800*	70
75	71.4	197.7	37,200 *	73.8	196.1	34,000*	76.6	193.2	27,000*	75
80	69.9	195.7	36,600 *	72.3	194.2	33,500*	75.0	191.3	26,300*	80
85	68.4	193.7	36,000 *	70.8	192.1	33,000*	73.4	189.2	25,600*	85
90	66.8	191.4	35,400 *	69.2	189.8	32,600*	71.9	186.9	24,900*	90
100	63.7	186.5	34,300 *	66.0	184.8	31,800*	68.6	181.8	23,700*	100
110	60.4	180.8	32,400	62.7	179.0	30,500*	65.3	176.0	22,600*	110
120	57.0	174.3	28,400	59.3	172.5	28,600*	61.8	169.4	21,700*	120
130	53.5	166.9	25,000	55.7	165.0	25,600	58.1	161.8	20,900*	130
140	49.8	158.5	22,200	52.0	156.5	22,700	54.3	153.2	20,200*	140
150	45.8	148.8	19,800	48.0	146.7	20,200	50.2	143.3	19,500*	150
160	41.6	137.7	17,700	43.7	135.4	18,000	45.8	131.8	18,400	160
170	36.9	124.7	15,800	38.9	122.2	16,100				170
180	31.7	109.1	14,100	33.5	106.2	14,400				180
190	25.4	89.3	12,600							190



# Liftcrane Jib Capacities

New York City Code  
 Jib No. 134 With 12 Ft. 6 in. Strut On  
 Boom No. 82LR  
 149,600 Lb. Counterweight  
 360 Degree Rating

Meets  
 ANSI B30.5  
 Requirements



## 999 SERIES 1

### 50 Ft. JIB

Jib Oper. Rad. Feet	5 Degree Offset			15 Degree Offset			25 Degree Offset			Jib Oper. Rad. Feet
	Boom Ang. Deg.	Jib Point Elev. Feet	Jib Capacity Pounds	Boom Ang. Deg.	Jib Point Elev. Feet	Jib Capacity Pounds	Boom Ang. Deg.	Jib Point Elev. Feet	Jib Capacity Pounds	
<b>160 Ft. BOOM</b>										
45	80.7	216.4	42,000 *							45
50	79.4	215.3	41,100 *							50
55	78.0	214.2	40,400 *	80.3	212.7	36,300*				55
60	76.6	212.9	39,600 *	78.9	211.4	35,800*				60
65	75.2	211.5	38,900 *	77.5	210.0	35,200*	80.2	207.0	29,000*	65
70	73.8	210.0	38,200 *	76.1	208.4	34,700*	78.7	205.5	28,100*	70
75	72.3	208.3	37,600 *	74.7	206.7	34,200*	77.3	203.8	27,400*	75
80	70.9	206.5	37,000 *	73.2	204.9	33,700*	75.8	201.9	26,600*	80
85	69.5	204.5	36,400 *	71.7	202.9	33,300*	74.3	199.9	25,900*	85
90	68.0	202.4	35,800 *	70.3	200.8	32,900*	72.8	197.8	25,300*	90
100	65.0	197.7	34,700 *	67.3	196.0	32,100*	69.7	193.0	24,100*	100
110	61.9	192.4	31,900	64.2	190.6	31,300*	66.6	187.6	23,000*	110
120	58.8	186.3	27,900	61.0	184.5	28,600	63.4	181.4	22,100*	120
130	55.5	179.4	24,500	57.7	177.6	25,100	60.0	174.4	21,300*	130
140	52.1	171.6	21,700	54.2	169.7	22,200	56.4	166.5	20,500*	140
150	48.5	162.8	19,300	50.5	160.8	19,700	52.7	157.4	19,900*	150
160	44.6	152.8	17,200	46.7	150.6	17,500	48.7	147.1	17,900	160
170	40.5	141.3	15,300	42.5	138.9	15,600	44.4	135.1	16,000	170
180	36.0	127.9	13,600	37.9	125.2	13,900				180
190	30.9	111.7	12,200	32.6	108.7	12,400				190
200	24.7	91.4	10,800							200



# Liftcrane Jib Capacities

New York City Code  
 Jib No. 134 With 12 Ft. 6 in. Strut On  
 Boom No. 82LR  
 149,600 Lb. Counterweight  
 360 Degree Rating

Meets  
 ANSI B30.5  
 Requirements

## 999 SERIES 1

### 50 Ft. JIB

Jib Oper. Rad. Feet	5 Degree Offset			15 Degree Offset			25 Degree Offset			Jib Oper. Rad. Feet
	Boom Ang. Deg.	Jib Point Elev. Feet	Jib Capacity Pounds	Boom Ang. Deg.	Jib Point Elev. Feet	Jib Capacity Pounds	Boom Ang. Deg.	Jib Point Elev. Feet	Jib Capacity Pounds	
<b>170 Ft. BOOM</b>										
50	79.9	225.6	41,400 *							50
55	78.5	224.5	40,700 *	80.8	222.9	36,500*				55
60	77.2	223.3	39,900 *	79.4	221.7	36,000*				60
65	75.9	221.9	39,300 *	78.1	220.4	35,400*	80.6	217.4	29,300*	65
70	74.5	220.4	38,600 *	76.7	218.9	34,900*	79.3	215.9	28,500*	70
75	73.2	218.8	38,000 *	75.4	217.3	34,500*	77.9	214.3	27,700*	75
80	71.8	217.1	37,300 *	74.0	215.5	34,000*	76.5	212.5	27,000*	80
85	70.4	215.3	36,800 *	72.6	213.7	33,600*	75.1	210.6	26,300*	85
90	69.0	213.3	36,200 *	71.2	211.6	33,100*	73.6	208.6	25,600*	90
100	66.2	208.8	35,200 *	68.4	207.2	32,300*	70.8	204.1	24,500*	100
110	63.3	203.8	31,500	65.5	202.1	31,600*	67.8	199.0	23,400*	110
120	60.4	198.1	27,500	62.5	196.3	28,200	64.7	193.2	22,500*	120
130	57.3	191.6	24,200	59.4	189.8	24,800	61.6	186.7	21,700*	130
140	54.1	184.4	21,400	56.1	182.5	21,900	58.3	179.3	20,900*	140
150	50.8	176.3	18,900	52.8	174.3	19,400	54.9	170.9	19,900	150
160	47.3	167.1	16,800	49.2	165.0	17,200	51.3	161.5	17,700	160
170	43.5	156.7	14,900	45.5	154.5	15,300	47.4	150.8	15,700	170
180	39.5	144.8	13,300	41.4	142.3	13,600				180
190	35.1	130.9	11,800	36.9	128.2	12,100				190
200	30.1	114.3	10,500							200
210	24.1	93.4	9,300							210



# Liftcrane Jib Capacities

New York City Code  
 Jib No. 134 With 12 Ft. 6 in. Strut On  
 Boom No. 82LR  
 149,600 Lb. Counterweight  
 360 Degree Rating

Meets  
 ANSI B30.5  
 Requirements

## 999 SERIES 1

### 50 Ft. JIB

Jib Oper. Rad. Feet	5 Degree Offset			15 Degree Offset			25 Degree Offset			Jib Oper. Rad. Feet
	Boom Ang. Deg.	Jib Point Elev. Feet	Jib Capacity Pounds	Boom Ang. Deg.	Jib Point Elev. Feet	Jib Capacity Pounds	Boom Ang. Deg.	Jib Point Elev. Feet	Jib Capacity Pounds	
<b>180 Ft. BOOM</b>										
50	80.3	235.8	41,700 *							50
55	79.0	234.7	41,000 *							55
60	77.8	233.6	40,200 *	79.9	232.0	36,100*				60
65	76.5	232.3	39,600 *	78.6	230.7	35,600*				65
70	75.2	230.9	38,900 *	77.3	229.3	35,100*	79.7	226.3	28,700*	70
75	73.9	229.4	38,300 *	76.0	227.8	34,700*	78.4	224.7	28,000*	75
80	72.6	227.7	37,700 *	74.7	226.1	34,200*	77.1	223.1	27,300*	80
85	71.3	225.9	37,100 *	73.4	224.3	33,800*	75.8	221.3	26,600*	85
90	70.0	224.0	36,600 *	72.1	222.4	33,400*	74.4	219.4	26,000*	90
100	67.3	219.8	35,500 *	69.4	218.2	32,600*	71.7	215.1	24,800*	100
110	64.6	215.1	31,200	66.6	213.3	31,900*	68.9	210.3	23,800*	110
120	61.8	209.7	27,200	63.8	207.9	27,900	66.0	204.8	22,900*	120
130	58.9	203.6	23,800	60.9	201.8	24,500	63.0	198.6	22,000*	130
140	55.9	196.9	21,000	57.9	195.0	21,600	60.0	191.7	21,300*	140
150	52.8	189.3	18,600	54.7	187.3	19,100	56.8	184.0	19,600	150
160	49.6	180.8	16,400	51.5	178.8	16,900	53.5	175.3	17,400	160
170	46.2	171.3	14,600	48.0	169.1	15,000	49.9	165.5	15,400	170
180	42.5	160.5	12,900	44.3	158.2	13,300	46.1	154.4	13,600	180
190	38.6	148.2	11,500	40.3	145.6	11,800				190
200	34.3	133.9	10,100	35.9	131.1	10,400				200
210	29.4	116.8	8,900							210
220	23.6	95.4	7,800							220



# Liftcrane Jib Capacities

Meets  
ANSI B30.5  
Requirements

New York City Code  
Jib No. 134 With 12 Ft. 6 in. Strut On  
Boom No. 82LR  
149,600 Lb. Counterweight  
360 Degree Rating

## 999 SERIES 1

### 50 Ft. JIB

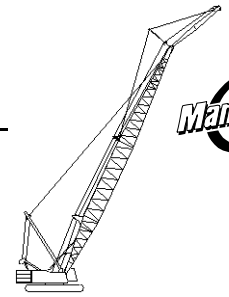
Jib Oper. Rad. Feet	5 Degree Offset			15 Degree Offset			25 Degree Offset			Jib Oper. Rad. Feet
	Boom Ang. Deg.	Jib Point Elev. Feet	Jib Capacity Pounds	Boom Ang. Deg.	Jib Point Elev. Feet	Jib Capacity Pounds	Boom Ang. Deg.	Jib Point Elev. Feet	Jib Capacity Pounds	
<b>190 Ft. BOOM</b>										
50	80.7	245.9	41,900 *							50
55	79.5	244.9	41,200 *							55
60	78.3	243.8	40,500 *	80.3	242.3	36,300*				60
65	77.1	242.6	39,900 *	79.1	241.0	35,800*				65
70	75.8	241.3	39,200 *	77.9	239.7	35,300*	80.2	236.6	29,000*	70
75	74.6	239.8	38,600 *	76.6	238.2	34,900*	78.9	235.1	28,300*	75
80	73.4	238.3	38,000 *	75.4	236.6	34,400*	77.7	233.6	27,600*	80
85	72.1	236.6	37,500 *	74.1	234.9	34,000*	76.4	231.9	26,900*	85
90	70.9	234.7	36,900 *	72.9	233.1	33,600*	75.1	230.0	26,300*	90
100	68.3	230.7	35,700	70.3	229.1	32,900*	72.5	226.0	25,200*	100
110	65.7	226.2	30,800	67.7	224.5	31,700	69.8	221.4	24,100*	110
120	63.1	221.1	26,800	65.0	219.4	27,600	67.1	216.2	23,200*	120
130	60.3	215.4	23,500	62.2	213.6	24,200	64.3	210.4	22,400*	130
140	57.5	209.0	20,600	59.4	207.2	21,300	61.5	203.9	21,600*	140
150	54.6	201.9	18,200	56.5	200.0	18,800	58.5	196.7	19,400	150
160	51.6	194.0	16,100	53.4	192.0	16,600	55.4	188.6	17,100	160
170	48.4	185.2	14,200	50.2	183.1	14,700	52.1	179.6	15,100	170
180	45.1	175.3	12,600	46.9	173.1	13,000	48.7	169.4	13,400	180
190	41.6	164.2	11,100	43.3	161.8	11,400	45.0	157.9	11,800	190
200	37.7	151.5	9,800	39.4	148.9	10,100				200
210	33.5	136.8	8,600	35.1	133.9	8,800				210
220	28.8	119.3	7,500							220
230	23.0	97.3	6,500							230



# Liftcrane Jib Capacities

New York City Code  
 Jib No. 134 With 12 Ft. 6 in. Strut On  
 Boom No. 82LR  
 149,600 Lb. Counterweight  
 360 Degree Rating

Meets  
 ANSI B30.5  
 Requirements



## 999 SERIES 1

### 50 Ft. JIB

Jib Oper. Rad. Feet	5 Degree Offset			15 Degree Offset			25 Degree Offset			Jib Oper. Rad. Feet
	Boom Ang. Deg.	Jib Point Elev. Feet	Jib Capacity Pounds	Boom Ang. Deg.	Jib Point Elev. Feet	Jib Capacity Pounds	Boom Ang. Deg.	Jib Point Elev. Feet	Jib Capacity Pounds	
<b>200 Ft. BOOM</b>										
55	79.9	255.2	41,500 *							55
60	78.8	254.1	40,800 *	80.7	252.5	36,500*				60
65	77.6	252.9	40,200 *	79.6	251.3	36,000*				65
70	76.4	251.6	39,500 *	78.4	250.0	35,500*	80.6	246.9	29,300*	70
75	75.2	250.2	38,900 *	77.2	248.6	35,100*	79.4	245.5	28,500*	75
80	74.1	248.7	38,400 *	76.0	247.1	34,700*	78.2	244.0	27,900*	80
85	72.9	247.1	37,800 *	74.8	245.5	34,200*	77.0	242.4	27,200*	85
90	71.7	245.4	37,300 *	73.6	243.7	33,800*	75.7	240.6	26,600*	90
100	69.2	241.6	35,300	71.1	239.9	33,100*	73.3	236.8	25,500*	100
110	66.7	237.2	30,400	68.6	235.5	31,300	70.7	232.4	24,500*	110
120	64.2	232.4	26,300	66.1	230.7	27,200	68.1	227.5	23,500*	120
130	61.6	227.0	23,000	63.5	225.2	23,700	65.5	222.0	22,700*	130
140	59.0	221.0	20,100	60.8	219.1	20,800	62.8	215.9	21,500	140
150	56.2	214.3	17,700	58.0	212.4	18,300	60.0	209.1	18,900	150
160	53.4	206.9	15,600	55.2	204.9	16,100	57.1	201.5	16,700	160
170	50.5	198.6	13,700	52.2	196.6	14,200	54.0	193.1	14,700	170
180	47.4	189.5	12,100	49.1	187.3	12,500	50.9	183.7	12,900	180
190	44.1	179.3	10,600	45.8	177.0	11,000	47.5	173.2	11,300	190
200	40.7	167.8	9,300	42.3	165.3	9,600				200
210	36.9	154.7	8,100	38.5	152.0	8,300				210
220	32.8	139.6	7,000	34.3	136.6	7,200				220
230	28.1	121.7	6,000							230
240	22.5	99.2	5,000							240



# Liftcrane Jib Capacities

New York City Code  
Jib No. 134 With 12 Ft. 6 in. Strut On  
Boom No. 82LR  
149,600 Lb. Counterweight  
360 Degree Rating

Meets  
ANSI B30.5  
Requirements

## 999 SERIES 1

### 50 Ft. JIB

Jib Oper. Rad. Feet	5 Degree Offset			15 Degree Offset			25 Degree Offset			Jib Oper. Rad. Feet
	Boom Ang. Deg.	Jib Point Elev. Feet	Jib Capacity Pounds	Boom Ang. Deg.	Jib Point Elev. Feet	Jib Capacity Pounds	Boom Ang. Deg.	Jib Point Elev. Feet	Jib Capacity Pounds	
<b>210 Ft. BOOM</b>										
55	80.3	265.3	41,700 *							55
60	79.2	264.3	41,000 *							60
65	78.1	263.2	40,400 *	80.0	261.6	36,200*				65
70	76.9	262.0	39,800 *	78.8	260.4	35,700*	81.0	257.2	29,500*	70
75	75.8	260.6	39,200 *	77.7	259.0	35,300*	79.8	255.9	28,800*	75
80	74.7	259.2	38,700 *	76.6	257.6	34,800*	78.7	254.4	28,100*	80
85	73.5	257.6	37,800	75.4	256.0	34,400*	77.5	252.9	27,500*	85
90	72.4	256.0	34,300	74.2	254.3	34,100*	76.3	251.2	26,900*	90
100	70.1	252.3	28,400	71.9	250.7	29,800	74.0	247.5	25,800*	100
110	67.7	248.2	23,600	69.5	246.5	24,900	71.5	243.3	24,800*	110
120	65.3	243.6	19,800	67.1	241.8	20,900	69.1	238.6	22,200	120
130	62.8	238.4	16,600	64.6	236.6	17,600	66.6	233.4	18,700	130
140	60.3	232.7	13,800	62.1	230.9	14,700	64.0	227.6	15,700	140
150	57.7	226.4	11,500	59.5	224.5	12,300	61.3	221.2	13,200	150
160	55.0	219.4	9,400	56.8	217.5	10,200	58.6	214.1	11,000	160
170	52.3	211.7	7,600	54.0	209.7	8,300	55.8	206.2	9,000	170
180	49.4	203.1	6,100	51.1	201.0	6,600	52.8	197.5	7,300	180
190	46.4	193.7	4,700	48.0	191.5	5,200	49.7	187.8	5,700	190
200							46.4	176.9	4,300	200
<b>220 Ft. BOOM</b>										
55	80.7	275.5	41,900 *							55
60	79.6	274.5	41,300 *							60
65	78.5	273.5	40,700 *	80.4	271.8	36,300*				65
70	77.4	272.3	40,100 *	79.3	270.7	35,900*				70
75	76.4	271.0	39,500 *	78.2	269.4	35,400*	80.2	266.2	29,000*	75
80	75.3	269.6	38,900 *	77.1	268.0	35,000*	79.1	264.8	28,400*	80
85	74.2	268.1	37,300	76.0	266.5	34,600*	78.0	263.3	27,700*	85
90	73.1	266.5	33,700	74.8	264.9	34,300*	76.9	261.7	27,200*	90
100	70.8	263.0	27,800	72.6	261.3	29,400	74.6	258.2	26,100*	100
110	68.6	259.1	23,100	70.3	257.4	24,500	72.3	254.2	25,100*	110
120	66.3	254.7	19,200	68.0	252.9	20,400	69.9	249.7	21,800	120
130	63.9	249.7	16,000	65.6	248.0	17,100	67.5	244.7	18,300	130
140	61.5	244.3	13,300	63.2	242.5	14,200	65.1	239.2	15,300	140
150	59.1	238.3	10,900	60.7	236.4	11,800	62.6	233.1	12,700	150
160	56.5	231.7	8,900	58.2	229.8	9,700	60.0	226.4	10,500	160
170	53.9	224.4	7,100	55.6	222.4	7,800	57.3	219.0	8,500	170
180	51.2	216.4	5,500	52.8	214.3	6,100	54.5	210.8	6,800	180
190	48.4	207.6	4,100	50.0	205.4	4,600	51.6	201.7	5,200	190



# Liftcrane Jib Capacities

New York City Code  
Jib No. 134 With 12 Ft. 6 in. Strut On  
Boom No. 82LR  
149,600 Lb. Counterweight  
360 Degree Rating

Meets  
ANSI B30.5  
Requirements

## 999 SERIES 1

### 50 Ft. JIB

Jib Oper. Rad. Feet	5 Degree Offset			15 Degree Offset			25 Degree Offset			Jib Oper. Rad. Feet
	Boom Ang. Deg.	Jib Point Elev. Feet	Jib Capacity Pounds	Boom Ang. Deg.	Jib Point Elev. Feet	Jib Capacity Pounds	Boom Ang. Deg.	Jib Point Elev. Feet	Jib Capacity Pounds	
<b>230 Ft. BOOM</b>										
60	80.0	284.7	41,500 *							60
65	78.9	283.7	40,900 *	80.7	282.1	36,500*				65
70	77.9	282.6	40,300 *	79.7	280.9	36,000*				70
75	76.8	281.3	39,800 *	78.6	279.7	35,600*	80.6	276.5	28,800*	75
80	75.8	280.0	39,200 *	77.5	278.3	35,200*	79.5	275.2	28,600*	80
85	74.7	278.6	36,800	76.5	276.9	34,800*	78.4	273.7	28,000*	85
90	73.7	277.0	33,200	75.4	275.4	34,400*	77.4	272.2	27,400*	90
100	71.5	273.7	27,300	73.3	272.0	28,900	75.2	268.8	26,300*	100
110	69.4	269.9	22,600	71.1	268.2	24,000	73.0	265.0	25,300*	110
120	67.2	265.6	18,700	68.8	263.9	20,000	70.7	260.7	21,300	120
130	64.9	260.9	15,500	66.6	259.2	16,600	68.4	255.9	17,800	130
140	62.6	255.7	12,700	64.3	253.9	13,700	66.1	250.6	14,800	140
150	60.3	250.0	10,400	61.9	248.2	11,300	63.7	244.8	12,300	150
160	57.9	243.7	8,300	59.5	241.8	9,100	61.2	238.5	10,000	160
170	55.4	236.8	6,500	57.0	234.9	7,300	58.7	231.4	8,100	170
180	52.9	229.3	5,000	54.4	227.3	5,600	56.1	223.7	6,300	180
190				51.8	218.9	4,100	53.4	215.3	4,800	190
<b>240 Ft. BOOM</b>										
60	80.3	294.9	41,700 *							60
65	79.3	293.9	41,100 *							65
70	78.3	292.8	40,600 *	80.0	291.2	36,200*				70
75	77.3	291.6	40,000 *	79.0	290.0	35,800*	80.9	286.8	29,400*	75
80	76.3	290.4	39,500 *	78.0	288.7	35,400*	79.9	285.5	28,300*	80
85	75.3	289.0	36,100	77.0	287.3	35,000*	78.9	284.1	28,200*	85
90	74.3	287.5	32,600	75.9	285.8	34,500	77.8	282.6	27,600*	90
100	72.2	284.3	26,600	73.9	282.6	28,300	75.7	279.4	26,600*	100
110	70.1	280.6	21,900	71.8	278.9	23,400	73.6	275.7	25,000	110
120	68.0	276.6	18,000	69.6	274.8	19,300	71.4	271.6	20,800	120
130	65.8	272.0	14,800	67.5	270.3	15,900	69.2	267.0	17,300	130
140	63.6	267.1	12,000	65.2	265.3	13,100	67.0	262.0	14,300	140
150	61.4	261.6	9,700	63.0	259.8	10,600	64.7	256.4	11,700	150
160	59.1	255.6	7,600	60.7	253.7	8,500	62.4	250.4	9,400	160
170	56.8	249.1	5,800	58.3	247.1	6,600	60.0	243.7	7,400	170
180	54.4	241.9	4,200	55.9	239.9	4,900	57.5	236.4	5,700	180
190							55.0	228.4	4,100	190

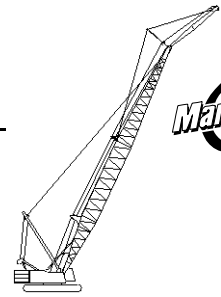




# Liftcrane Jib Capacities

New York City Code  
 Jib No. 134 With 12 Ft. 6 in. Strut On  
 Boom No. 82LR  
 149,600 Lb. Counterweight  
 360 Degree Rating

Meets  
 ANSI B30.5  
 Requirements



## 999 SERIES 1

### 50 Ft. JIB

Jib Oper. Rad. Feet	5 Degree Offset			15 Degree Offset			25 Degree Offset			Jib Oper. Rad. Feet
	Boom Ang. Deg.	Jib Point Elev. Feet	Jib Capacity Pounds	Boom Ang. Deg.	Jib Point Elev. Feet	Jib Capacity Pounds	Boom Ang. Deg.	Jib Point Elev. Feet	Jib Capacity Pounds	
<b>250 Ft. BOOM</b>										
60	80.6	305.1	41,900 *							60
65	79.7	304.1	41,300 *							65
70	78.7	303.1	40,800 *	80.4	301.4	36,300*				70
75	77.7	301.9	40,200 *	79.4	300.3	35,900*				75
80	76.8	300.7	39,700 *	78.4	299.0	35,500*	80.2	295.8	27,500*	80
85	75.8	299.4	35,600	77.4	297.7	35,200*	79.2	294.5	27,500*	85
90	74.8	297.9	32,000	76.4	296.3	34,000	78.2	293.0	27,500*	90
100	72.8	294.8	26,100	74.4	293.1	27,800	76.2	289.9	26,800*	100
110	70.8	291.3	21,300	72.4	289.6	22,900	74.2	286.3	24,600	110
120	68.8	287.4	17,400	70.3	285.7	18,800	72.1	282.4	20,300	120
130	66.7	283.1	14,200	68.3	281.3	15,400	70.0	278.0	16,800	130
140	64.6	278.3	11,400	66.1	276.5	12,600	67.8	273.2	13,800	140
150	62.4	273.1	9,100	64.0	271.2	10,100	65.7	267.9	11,200	150
160	60.3	267.3	7,000	61.8	265.5	7,900	63.4	262.1	8,900	160
170	58.0	261.1	5,200	59.5	259.2	6,100	61.1	255.7	7,000	170
180				57.2	252.3	4,400	58.8	248.8	5,200	180



# Liftcrane Jib Capacities

New York City Code  
Jib No. 134 With 12 Ft. 6 in. Strut On  
Boom No. 82LR  
149,600 Lb. Counterweight  
360 Degree Rating

Meets  
ANSI B30.5  
Requirements

## 999 SERIES 1

### 60 Ft. JIB

Jib Oper. Rad. Feet	5 Degree Offset			15 Degree Offset			25 Degree Offset			Jib Oper. Rad. Feet
	Boom Ang. Deg.	Jib Point Elev. Feet	Jib Capacity Pounds	Boom Ang. Deg.	Jib Point Elev. Feet	Jib Capacity Pounds	Boom Ang. Deg.	Jib Point Elev. Feet	Jib Capacity Pounds	
<b>120 Ft. BOOM</b>										
40	80.9	186.8	31,900 *							40
45	79.3	185.8	31,200 *							45
50	77.7	184.6	30,500 *							50
55	76.1	183.2	29,800 *	79.7	182.0	27,200*				55
60	74.4	181.7	29,200 *	78.0	180.5	26,700*				60
65	72.8	180.1	28,600 *	76.4	178.8	26,200*	79.7	175.5	20,000*	65
70	71.1	178.2	28,000 *	74.7	177.0	25,700*	78.0	173.6	20,000*	70
75	69.4	176.2	27,400 *	73.0	175.0	25,200*	76.3	171.6	20,000*	75
80	67.7	174.1	26,900 *	71.2	172.9	24,800*	74.5	169.4	20,000*	80
85	65.9	171.7	26,400 *	69.5	170.5	24,300*	72.7	167.0	20,000*	85
90	64.2	169.2	25,900 *	67.7	168.0	23,900*	70.9	164.4	20,000*	90
100	60.6	163.5	24,900 *	64.1	162.3	23,200*	67.2	158.6	19,800*	100
110	56.8	156.9	24,000 *	60.3	155.8	22,500*	63.3	151.9	18,600*	110
120	52.8	149.3	23,200 *	56.3	148.2	21,800*	59.2	144.1	17,600*	120
130	48.7	140.5	22,400 *	52.1	139.4	21,300*	54.8	135.0	16,700*	130
140	44.2	130.3	21,800 *	47.5	129.2	20,100*	50.1	124.4	16,000*	140
150	39.2	118.3	20,900	42.5	117.1	19,000*	44.9	111.8	15,300*	150
160	33.7	103.7	18,800	36.9	102.4	18,000*				160
170	27.0	85.1	16,900							170
<b>130 Ft. BOOM</b>										
45	79.9	196.0	31,400 *							45
50	78.4	194.9	30,800 *							50
55	76.8	193.6	30,100 *	80.2	192.3	27,400*				55
60	75.3	192.2	29,500 *	78.7	190.9	26,900*				60
65	73.7	190.6	28,900 *	77.1	189.3	26,400*	80.3	185.9	20,600*	65
70	72.1	188.9	28,300 *	75.5	187.6	25,900*	78.7	184.2	20,600*	70
75	70.5	187.0	27,800 *	73.9	185.8	25,500*	77.1	182.3	20,600*	75
80	68.9	185.0	27,200 *	72.3	183.7	25,000*	75.4	180.2	20,600*	80
85	67.3	182.8	26,700 *	70.6	181.5	24,600*	73.7	178.0	20,600*	85
90	65.6	180.4	26,300 *	69.0	179.2	24,200*	72.0	175.6	20,600*	90
100	62.3	175.1	25,300 *	65.6	173.9	23,500*	68.6	170.2	20,300*	100
110	58.8	169.0	24,400 *	62.1	167.8	22,800*	65.0	163.9	19,100*	110
120	55.1	162.0	23,600 *	58.4	160.8	22,200*	61.2	156.8	18,100*	120
130	51.3	154.0	22,900 *	54.5	152.8	21,600*	57.2	148.5	17,200*	130
140	47.2	144.8	22,200 *	50.4	143.6	20,900*	53.0	139.0	16,400*	140
150	42.9	134.1	20,600	46.0	132.9	19,700*	48.4	127.9	15,700*	150
160	38.1	121.6	18,500	41.2	120.3	18,700*	43.4	114.7	15,200*	160
170	32.7	106.5	16,600	35.7	105.1	17,000				170
180	26.2	87.3	15,000							180



# Liftcrane Jib Capacities

New York City Code  
Jib No. 134 With 12 Ft. 6 in. Strut On  
Boom No. 82LR  
149,600 Lb. Counterweight  
360 Degree Rating

Meets  
ANSI B30.5  
Requirements

## 999 SERIES 1

### 60 Ft. JIB

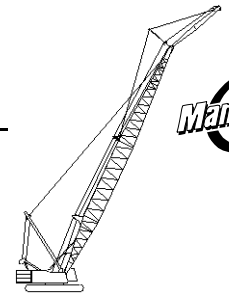
Jib Oper. Rad. Feet	5 Degree Offset			15 Degree Offset			25 Degree Offset			Jib Oper. Rad. Feet
	Boom Ang. Deg.	Jib Point Elev. Feet	Jib Capacity Pounds	Boom Ang. Deg.	Jib Point Elev. Feet	Jib Capacity Pounds	Boom Ang. Deg.	Jib Point Elev. Feet	Jib Capacity Pounds	
<b>140 Ft. BOOM</b>										
45	80.4	206.2	31,700 *							45
50	78.9	205.1	31,000 *							50
55	77.5	203.9	30,400 *	80.7	202.6	27,500*				55
60	76.0	202.6	29,800 *	79.3	201.3	27,000*				60
65	74.5	201.1	29,200 *	77.8	199.8	26,600*				65
70	73.0	199.5	28,600 *	76.3	198.2	26,100*	79.3	194.7	21,300*	70
75	71.5	197.7	28,100 *	74.8	196.4	25,700*	77.8	192.9	21,300*	75
80	70.0	195.8	27,600 *	73.2	194.5	25,300*	76.2	190.9	21,300*	80
85	68.5	193.7	27,100 *	71.7	192.4	24,900*	74.6	188.8	21,300*	85
90	66.9	191.5	26,600 *	70.1	190.2	24,500*	73.0	186.6	21,300*	90
100	63.8	186.5	25,700 *	66.9	185.3	23,800*	69.8	181.5	20,700*	100
110	60.5	180.8	24,900 *	63.6	179.6	23,100*	66.4	175.7	19,500*	110
120	57.1	174.3	24,100 *	60.2	173.1	22,500*	62.9	169.0	18,500*	120
130	53.6	166.9	23,300 *	56.7	165.7	21,900*	59.3	161.5	17,600*	130
140	49.9	158.5	22,600 *	52.9	157.3	21,400*	55.4	152.8	16,800*	140
150	46.0	148.9	20,300	49.0	147.6	20,500*	51.3	142.8	16,100*	150
160	41.7	137.8	18,200	44.7	136.5	18,600	46.9	131.3	15,600*	160
170	37.1	124.8	16,300	40.0	123.4	16,700				170
180	31.8	109.2	14,700	34.7	107.7	15,000				180
190	25.5	89.4	13,200							190
<b>150 Ft. BOOM</b>										
50	79.5	215.4	31,200 *							50
55	78.1	214.2	30,600 *							55
60	76.7	213.0	30,100 *	79.8	211.6	27,200*				60
65	75.3	211.5	29,500 *	78.4	210.2	26,800*				65
70	73.9	210.0	29,000 *	76.9	208.7	26,300*	79.8	205.1	21,700*	70
75	72.4	208.3	28,400 *	75.5	207.0	25,900*	78.4	203.4	21,700*	75
80	71.0	206.5	27,900 *	74.1	205.2	25,500*	76.9	201.6	21,700*	80
85	69.6	204.5	27,400 *	72.6	203.2	25,100*	75.4	199.6	21,700*	85
90	68.1	202.4	27,000 *	71.1	201.1	24,700*	73.9	197.5	21,700*	90
100	65.1	197.7	26,100 *	68.1	196.5	24,000*	70.9	192.7	21,100*	100
110	62.0	192.4	25,300 *	65.0	191.1	23,400*	67.7	187.2	20,000*	110
120	58.9	186.3	24,500 *	61.9	185.1	22,800*	64.4	181.0	18,900*	120
130	55.6	179.5	23,700 *	58.6	178.2	22,200*	61.1	174.0	18,000*	130
140	52.2	171.7	22,400	55.1	170.4	21,700*	57.5	166.0	17,200*	140
150	48.6	162.9	20,000	51.5	161.6	20,600	53.8	157.0	16,500*	150
160	44.8	152.9	17,900	47.6	151.6	18,400	49.8	146.6	15,900*	160
170	40.6	141.4	16,000	43.5	140.0	16,400	45.5	134.6	15,400*	170
180	36.1	127.9	14,400	38.9	126.5	14,700				180
190	31.0	111.8	12,900	33.7	110.3	13,200				190
200	24.9	91.5	11,500							200



# Liftcrane Jib Capacities

New York City Code  
Jib No. 134 With 12 Ft. 6 in. Strut On  
Boom No. 82LR  
149,600 Lb. Counterweight  
360 Degree Rating

Meets  
ANSI B30.5  
Requirements



## 999 SERIES 1

### 60 Ft. JIB

Jib Oper. Rad. Feet	5 Degree Offset			15 Degree Offset			25 Degree Offset			Jib Oper. Rad. Feet
	Boom Ang. Deg.	Jib Point Elev. Feet	Jib Capacity Pounds	Boom Ang. Deg.	Jib Point Elev. Feet	Jib Capacity Pounds	Boom Ang. Deg.	Jib Point Elev. Feet	Jib Capacity Pounds	
<b>160 Ft. BOOM</b>										
50	80.0	225.6	31,500 *							50
55	78.6	224.5	30,900 *							55
60	77.3	223.3	30,300 *	80.3	221.9	27,400*				60
65	76.0	221.9	29,800 *	78.9	220.6	26,900*				65
70	74.6	220.5	29,200 *	77.6	219.1	26,500*	80.3	215.5	22,100*	70
75	73.3	218.9	28,700 *	76.2	217.5	26,100*	78.9	213.9	22,100*	75
80	71.9	217.2	28,200 *	74.8	215.8	25,700*	77.5	212.2	22,100*	80
85	70.5	215.3	27,800 *	73.4	214.0	25,300*	76.1	210.3	22,100*	85
90	69.1	213.3	27,300 *	72.0	212.0	25,000*	74.7	208.2	22,100*	90
100	66.3	208.9	26,400 *	69.2	207.5	24,300*	71.8	203.7	21,500*	100
110	63.4	203.8	25,600 *	66.3	202.5	23,600*	68.9	198.6	20,400*	110
120	60.5	198.1	24,800 *	63.3	196.8	23,000*	65.8	192.8	19,300*	120
130	57.4	191.7	24,100 *	60.2	190.4	22,500*	62.6	186.2	18,400*	130
140	54.2	184.5	21,900	57.0	183.2	21,900*	59.4	178.8	17,600*	140
150	50.9	176.3	19,500	53.7	175.0	20,100	55.9	170.5	16,900*	150
160	47.4	167.2	17,400	50.1	165.8	17,900	52.3	161.0	16,300*	160
170	43.7	156.8	15,500	46.4	155.4	16,000	48.4	150.2	15,700*	170
180	39.6	144.8	13,900	42.3	143.4	14,300	44.2	137.8	14,600	180
190	35.2	131.0	12,400	37.8	129.5	12,700				190
200	30.2	114.4	11,000	32.8	112.7	11,300				200
210	24.2	93.5	9,800							210



# Liftcrane Jib Capacities

Meets  
 ANSI B30.5  
 Requirements

New York City Code  
 Jib No. 134 With 12 Ft. 6 in. Strut On  
 Boom No. 82LR  
 149,600 Lb. Counterweight  
 360 Degree Rating

## 999 SERIES 1

### 60 Ft. JIB

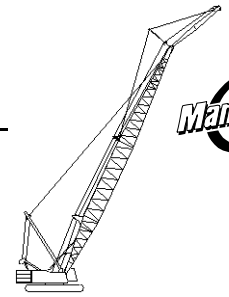
Jib Oper. Rad. Feet	5 Degree Offset			15 Degree Offset			25 Degree Offset			Jib Oper. Rad. Feet
	Boom Ang. Deg.	Jib Point Elev. Feet	Jib Capacity Pounds	Boom Ang. Deg.	Jib Point Elev. Feet	Jib Capacity Pounds	Boom Ang. Deg.	Jib Point Elev. Feet	Jib Capacity Pounds	
<b>170 Ft. BOOM</b>										
50	80.4	235.8	31,700 *							50
55	79.1	234.8	31,100 *							55
60	77.9	233.6	30,500 *	80.7	232.2	27,500*				60
65	76.6	232.3	30,000 *	79.4	230.9	27,100*				65
70	75.3	230.9	29,500 *	78.1	229.5	26,700*	80.8	225.9	22,300*	70
75	74.0	229.4	29,000 *	76.8	228.0	26,300*	79.5	224.3	22,300*	75
80	72.7	227.7	28,500 *	75.5	226.4	25,900*	78.1	222.7	22,300*	80
85	71.4	226.0	28,100 *	74.2	224.6	25,600*	76.8	220.9	22,300*	85
90	70.1	224.1	27,600 *	72.9	222.7	25,200*	75.4	219.0	22,300*	90
100	67.4	219.9	26,800 *	70.2	218.5	24,500*	72.7	214.7	21,900*	100
110	64.7	215.1	26,000 *	67.4	213.7	23,900*	69.9	209.8	20,800*	110
120	61.9	209.7	25,200 *	64.6	208.4	23,300*	67.0	204.4	19,700*	120
130	59.0	203.7	24,400	61.7	202.3	22,700*	64.0	198.2	18,800*	130
140	56.0	196.9	21,500	58.7	195.6	22,200*	61.0	191.3	18,000*	140
150	52.9	189.3	19,100	55.6	188.0	19,800	57.8	183.5	17,300*	150
160	49.7	180.8	17,000	52.3	179.5	17,600	54.4	174.8	16,600*	160
170	46.3	171.3	15,100	48.9	170.0	15,700	50.9	165.0	16,100*	170
180	42.6	160.5	13,500	45.2	159.1	14,000	47.1	153.8	14,300	180
190	38.7	148.2	12,000	41.2	146.8	12,400				190
200	34.4	133.9	10,700	36.9	132.4	11,000				200
210	29.5	116.9	9,500	31.9	115.2	9,800				210
220	23.7	95.5	8,400							220



# Liftcrane Jib Capacities

New York City Code  
 Jib No. 134 With 12 Ft. 6 in. Strut On  
 Boom No. 82LR  
 149,600 Lb. Counterweight  
 360 Degree Rating

Meets  
 ANSI B30.5  
 Requirements



## 999 SERIES 1

### 60 Ft. JIB

Jib Oper. Rad. Feet	5 Degree Offset			15 Degree Offset			25 Degree Offset			Jib Oper. Rad. Feet
	Boom Ang. Deg.	Jib Point Elev. Feet	Jib Capacity Pounds	Boom Ang. Deg.	Jib Point Elev. Feet	Jib Capacity Pounds	Boom Ang. Deg.	Jib Point Elev. Feet	Jib Capacity Pounds	
<b>180 Ft. BOOM</b>										
55	79.6	245.0	31,300 *							55
60	78.4	243.9	30,800 *							60
65	77.2	242.6	30,200 *	79.9	241.2	27,200*				65
70	75.9	241.3	29,700 *	78.6	239.9	26,800*				70
75	74.7	239.9	29,300 *	77.4	238.4	26,500*	79.9	234.7	22,700*	75
80	73.5	238.3	28,800 *	76.1	236.9	26,100*	78.7	233.2	22,700*	80
85	72.2	236.6	28,300 *	74.9	235.2	25,800*	77.4	231.4	22,700*	85
90	71.0	234.8	27,900 *	73.6	233.4	25,400*	76.1	229.6	22,700*	90
100	68.4	230.8	27,100 *	71.1	229.4	24,700*	73.5	225.6	22,300*	100
110	65.8	226.2	26,300 *	68.4	224.9	24,100*	70.8	220.9	21,100*	110
120	63.1	221.1	25,500 *	65.8	219.8	23,500*	68.1	215.8	20,100*	120
130	60.4	215.4	24,000	63.0	214.1	23,000*	65.3	209.9	19,200*	130
140	57.6	209.1	21,200	60.2	207.7	22,000	62.4	203.4	18,400*	140
150	54.7	202.0	18,700	57.3	200.6	19,500	59.4	196.2	17,600*	150
160	51.7	194.1	16,600	54.2	192.7	17,300	56.3	188.1	17,000*	160
170	48.5	185.2	14,800	51.1	183.9	15,300	53.0	179.0	15,800	170
180	45.2	175.4	13,100	47.7	174.0	13,600	49.6	168.8	14,000	180
190	41.7	164.2	11,700	44.1	162.8	12,100	45.9	157.2	12,400	190
200	37.8	151.5	10,300	40.3	150.0	10,700				200
210	33.6	136.8	9,100	36.0	135.2	9,500				210
220	28.9	119.3	8,000							220
230	23.1	97.4	7,000							230



# Liftcrane Jib Capacities

New York City Code  
Jib No. 134 With 12 Ft. 6 in. Strut On  
Boom No. 82LR  
149,600 Lb. Counterweight  
360 Degree Rating

Meets  
ANSI B30.5  
Requirements

## 999 SERIES 1

### 60 Ft. JIB

Jib Oper. Rad. Feet	5 Degree Offset			15 Degree Offset			25 Degree Offset			Jib Oper. Rad. Feet
	Boom Ang. Deg.	Jib Point Elev. Feet	Jib Capacity Pounds	Boom Ang. Deg.	Jib Point Elev. Feet	Jib Capacity Pounds	Boom Ang. Deg.	Jib Point Elev. Feet	Jib Capacity Pounds	
<b>190 Ft. BOOM</b>										
55	80.0	255.2	31,500 *							55
60	78.8	254.1	31,000 *							60
65	77.7	252.9	30,500 *	80.3	251.5	27,400*				65
70	76.5	251.7	30,000 *	79.1	250.2	27,000*				70
75	75.3	250.3	29,500 *	77.9	248.8	26,600*	80.3	245.1	22,800*	75
80	74.1	248.8	29,000 *	76.7	247.3	26,300*	79.1	243.6	22,800*	80
85	72.9	247.2	28,600 *	75.5	245.7	25,900*	77.9	242.0	22,800*	85
90	71.7	245.4	28,200 *	74.3	244.0	25,600*	76.7	240.2	22,800*	90
100	69.3	241.6	27,300 *	71.9	240.2	24,900*	74.2	236.3	22,600*	100
110	66.8	237.3	26,600 *	69.4	235.9	24,300*	71.7	231.9	21,500*	110
120	64.3	232.4	25,900 *	66.8	231.0	23,700*	69.1	227.0	20,400*	120
130	61.7	227.0	23,700	64.2	225.6	23,200*	66.4	221.5	19,500*	130
140	59.1	221.0	20,800	61.5	219.6	21,700	63.7	215.4	18,700*	140
150	56.3	214.3	18,400	58.8	212.9	19,100	60.9	208.5	18,000*	150
160	53.5	206.9	16,300	55.9	205.5	17,000	58.0	201.0	17,300*	160
170	50.6	198.7	14,400	53.0	197.3	15,000	54.9	192.5	15,500	170
180	47.5	189.5	12,800	49.9	188.1	13,300	51.7	183.1	13,700	180
190	44.2	179.3	11,300	46.6	177.9	11,800	48.4	172.6	12,200	190
200	40.8	167.8	10,000	43.1	166.4	10,400	44.8	160.6	10,700	200
210	37.0	154.8	8,800	39.3	153.2	9,200				210
220	32.9	139.7	7,700	35.2	138.0	8,000				220
230	28.2	121.7	6,700							230
240	22.6	99.3	5,800							240



# Liftcrane Jib Capacities

New York City Code  
Jib No. 134 With 12 Ft. 6 in. Strut On  
Boom No. 82LR  
149,600 Lb. Counterweight  
360 Degree Rating

Meets  
ANSI B30.5  
Requirements

## 999 SERIES 1

### 60 Ft. JIB

Jib Oper. Rad. Feet	5 Degree Offset			15 Degree Offset			25 Degree Offset			Jib Oper. Rad. Feet
	Boom Ang. Deg.	Jib Point Elev. Feet	Jib Capacity Pounds	Boom Ang. Deg.	Jib Point Elev. Feet	Jib Capacity Pounds	Boom Ang. Deg.	Jib Point Elev. Feet	Jib Capacity Pounds	
<b>200 Ft. BOOM</b>										
55	80.4	265.4	31,700 *							55
60	79.3	264.4	31,200 *							60
65	78.2	263.2	30,700 *	80.7	261.7	27,500*				65
70	77.0	262.0	30,200 *	79.5	260.5	27,100*				70
75	75.9	260.7	29,700 *	78.4	259.2	26,800*	80.7	255.4	22,800*	75
80	74.8	259.2	29,300 *	77.2	257.8	26,400*	79.6	254.0	22,800*	80
85	73.6	257.7	28,800 *	76.1	256.2	26,100*	78.4	252.4	22,800*	85
90	72.5	256.0	28,400 *	74.9	254.6	25,800*	77.2	250.7	22,800*	90
100	70.1	252.4	27,600 *	72.6	250.9	25,100*	74.8	247.0	22,800*	100
110	67.8	248.2	24,400	70.2	246.8	24,500*	72.4	242.9	21,800*	110
120	65.4	243.6	20,500	67.8	242.2	22,000	70.0	238.2	20,800*	120
130	62.9	238.5	17,300	65.3	237.1	18,600	67.4	232.9	19,800	130
140	60.4	232.7	14,600	62.8	231.3	15,800	64.9	227.1	16,800	140
150	57.8	226.4	12,200	60.2	225.0	13,300	62.2	220.7	14,200	150
160	55.1	219.4	10,200	57.5	218.0	11,200	59.5	213.5	12,000	160
170	52.4	211.7	8,400	54.7	210.3	9,300	56.6	205.6	10,000	170
180	49.5	203.2	6,800	51.8	201.8	7,600	53.7	196.9	8,200	180
190	46.5	193.7	5,400	48.8	192.3	6,100	50.5	187.1	6,600	190
200	43.3	183.2	4,200	45.6	181.7	4,800	47.2	176.2	5,200	200
<b>210 Ft. BOOM</b>										
60	79.7	274.6	31,300 *							60
65	78.6	273.5	30,900 *							65
70	77.5	272.3	30,400 *	79.9	270.8	27,300*				70
75	76.4	271.0	29,900 *	78.8	269.5	26,900*				75
80	75.3	269.6	29,500 *	77.7	268.2	26,600*	80.0	264.3	23,000*	80
85	74.2	268.2	29,100 *	76.6	266.7	26,200*	78.9	262.9	23,000*	85
90	73.1	266.6	28,700 *	75.5	265.1	25,900*	77.7	261.2	23,000*	90
100	70.9	263.1	27,900 *	73.3	261.6	25,300*	75.4	257.7	23,000*	100
110	68.6	259.1	23,900	71.0	257.7	24,700*	73.1	253.7	22,100*	110
120	66.3	254.7	20,000	68.7	253.2	21,500	70.8	249.2	21,100*	120
130	64.0	249.8	16,800	66.3	248.3	18,200	68.4	244.2	19,400	130
140	61.6	244.3	14,000	63.9	242.9	15,300	65.9	238.7	16,400	140
150	59.1	238.3	11,700	61.4	236.9	12,800	63.4	232.6	13,800	150
160	56.6	231.7	9,700	58.9	230.3	10,700	60.8	225.8	11,500	160
170	54.0	224.4	7,900	56.3	223.0	8,800	58.1	218.4	9,500	170
180	51.3	216.4	6,300	53.6	215.0	7,100	55.4	210.2	7,800	180
190	48.5	207.6	4,900	50.7	206.1	5,600	52.5	201.1	6,200	190
200				47.8	196.4	4,300	49.4	191.1	4,800	200





# Liftcrane Jib Capacities

New York City Code  
Jib No. 134 With 12 Ft. 6 in. Strut On  
Boom No. 82LR  
149,600 Lb. Counterweight  
360 Degree Rating

Meets  
ANSI B30.5  
Requirements

## 999 SERIES 1

### 60 Ft. JIB

Jib Oper. Rad. Feet	5 Degree Offset			15 Degree Offset			25 Degree Offset			Jib Oper. Rad. Feet
	Boom Ang. Deg.	Jib Point Elev. Feet	Jib Capacity Pounds	Boom Ang. Deg.	Jib Point Elev. Feet	Jib Capacity Pounds	Boom Ang. Deg.	Jib Point Elev. Feet	Jib Capacity Pounds	
<b>220 Ft. BOOM</b>										
60	80.0	284.8	31,500 *							60
65	79.0	283.7	31,000 *							65
70	78.0	282.6	30,600 *	80.3	281.1	27,400*				70
75	76.9	281.4	30,100 *	79.2	279.8	27,000*				75
80	75.9	280.0	29,700 *	78.2	278.5	26,700*	80.4	274.7	22,800*	80
85	74.8	278.6	29,300 *	77.1	277.1	26,400*	79.3	273.2	22,800*	85
90	73.8	277.1	28,900 *	76.1	275.6	26,100*	78.2	271.7	22,800*	90
100	71.6	273.7	28,100 *	73.9	272.2	25,500*	76.0	268.3	22,800*	100
110	69.4	269.9	23,300	71.7	268.4	24,900*	73.8	264.5	22,400*	110
120	67.2	265.7	19,500	69.5	264.2	21,100	71.5	260.2	21,400*	120
130	65.0	261.0	16,200	67.2	259.5	17,700	69.2	255.4	18,900	130
140	62.7	255.8	13,500	64.9	254.3	14,800	66.9	250.1	15,900	140
150	60.4	250.1	11,100	62.6	248.6	12,300	64.5	244.3	13,300	150
160	58.0	243.8	9,100	60.2	242.3	10,200	62.0	237.9	11,100	160
170	55.5	236.9	7,300	57.7	235.4	8,300	59.5	230.9	9,100	170
180	52.9	229.3	5,700	55.1	227.9	6,600	56.9	223.2	7,300	180
190	50.3	221.0	4,300	52.5	219.6	5,100	54.2	214.7	5,700	190
200							51.3	205.3	4,300	200
<b>230 Ft. BOOM</b>										
60	80.4	295.0	31,700 *							60
65	79.4	294.0	31,200 *							65
70	78.4	292.9	30,800 *	80.6	291.3	27,500*				70
75	77.4	291.7	30,300 *	79.6	290.1	27,200*				75
80	76.4	290.4	29,900 *	78.6	288.8	26,800*	80.7	285.0	22,600*	80
85	75.4	289.0	29,500 *	77.6	287.5	26,500*	79.7	283.6	22,600*	85
90	74.3	287.5	29,100 *	76.5	286.0	26,200*	78.6	282.1	22,600*	90
100	72.3	284.3	27,500	74.5	282.8	25,600*	76.5	278.9	22,600*	100
110	70.2	280.7	22,800	72.4	279.2	24,700	74.4	275.2	22,600*	110
120	68.1	276.6	18,900	70.2	275.1	20,600	72.2	271.1	21,700*	120
130	65.9	272.1	15,700	68.1	270.6	17,200	70.0	266.5	18,500	130
140	63.7	267.1	12,900	65.9	265.6	14,300	67.8	261.4	15,500	140
150	61.5	261.6	10,600	63.6	260.2	11,800	65.5	255.9	12,900	150
160	59.2	255.7	8,500	61.3	254.2	9,700	63.2	249.8	10,600	160
170	56.8	249.1	6,800	59.0	247.6	7,800	60.8	243.1	8,600	170
180	54.4	241.9	5,200	56.5	240.5	6,100	58.3	235.8	6,900	180
190				54.0	232.6	4,600	55.7	227.8	5,300	190



# Liftcrane Jib Capacities

New York City Code  
 Jib No. 134 With 12 Ft. 6 in. Strut On  
 Boom No. 82LR  
 149,600 Lb. Counterweight  
 360 Degree Rating

Meets  
 ANSI B30.5  
 Requirements

## 999 SERIES 1

### 60 Ft. JIB

Jib Oper. Rad. Feet	5 Degree Offset			15 Degree Offset			25 Degree Offset			Jib Oper. Rad. Feet
	Boom Ang. Deg.	Jib Point Elev. Feet	Jib Capacity Pounds	Boom Ang. Deg.	Jib Point Elev. Feet	Jib Capacity Pounds	Boom Ang. Deg.	Jib Point Elev. Feet	Jib Capacity Pounds	
<b>240 Ft. BOOM</b>										
60	80.7	305.1	31,800 *							60
65	79.8	304.2	31,400 *							65
70	78.8	303.1	30,900 *							70
75	77.8	302.0	30,500 *	80.0	300.4	27,300*				75
80	76.8	300.7	30,100 *	79.0	299.2	27,000*				80
85	75.9	299.4	29,700 *	78.0	297.8	26,700*	80.0	294.0	22,400*	85
90	74.9	298.0	29,300 *	77.0	296.4	26,400*	79.0	292.5	22,400*	90
100	72.9	294.9	26,900	75.0	293.3	25,800*	77.0	289.4	22,400*	100
110	70.9	291.3	22,100	73.0	289.8	24,100	74.9	285.8	22,400*	110
120	68.8	287.4	18,200	70.9	285.9	20,000	72.9	281.9	21,600	120
130	66.8	283.1	15,000	68.9	281.6	16,600	70.8	277.5	18,000	130
140	64.7	278.3	12,200	66.8	276.8	13,700	68.6	272.6	14,900	140
150	62.5	273.1	9,900	64.6	271.6	11,200	66.4	267.3	12,300	150
160	60.3	267.4	7,800	62.4	265.9	9,000	64.2	261.5	10,000	160
170	58.1	261.1	6,000	60.2	259.7	7,100	61.9	255.2	8,000	170
180	55.8	254.3	4,400	57.8	252.8	5,400	59.5	248.2	6,200	180
190							57.1	240.6	4,700	190
<b>250 Ft. BOOM</b>										
65	80.1	314.4	31,500 *							65
70	79.1	313.3	31,100 *							70
75	78.2	312.2	30,700 *	80.3	310.6	27,400*				75
80	77.3	311.0	30,300 *	79.4	309.5	27,100*				80
85	76.3	309.7	29,900 *	78.4	308.2	26,800*	80.4	304.3	22,000*	85
90	75.4	308.4	29,500 *	77.4	306.8	26,500*	79.4	302.9	22,000*	90
100	73.4	305.4	26,300	75.5	303.8	25,900*	77.4	299.9	22,000*	100
110	71.5	302.0	21,600	73.6	300.5	23,600	75.5	296.4	22,000*	110
120	69.5	298.2	17,700	71.6	296.7	19,500	73.5	292.6	21,100	120
130	67.6	294.0	14,400	69.6	292.5	16,100	71.4	288.4	17,500	130
140	65.5	289.5	11,700	67.6	288.0	13,200	69.4	283.8	14,500	140
150	63.5	284.4	9,300	65.5	282.9	10,700	67.3	278.7	11,800	150
160	61.4	279.0	7,200	63.4	277.5	8,500	65.1	273.1	9,600	160
170	59.2	273.0	5,400	61.2	271.5	6,600	62.9	267.0	7,500	170
180				59.0	265.0	4,900	60.7	260.4	5,800	180
190							58.4	253.2	4,200	190



# Liftcrane Jib Capacities

New York City Code  
Jib No. 134 With 12 Ft. 6 in. Strut On  
Boom No. 82LR  
149,600 Lb. Counterweight  
360 Degree Rating

Meets  
ANSI B30.5  
Requirements

## 999 SERIES 1

### 70 Ft. JIB

Jib Oper. Rad. Feet	5 Degree Offset			15 Degree Offset			25 Degree Offset			Jib Oper. Rad. Feet
	Boom Ang. Deg.	Jib Point Elev. Feet	Jib Capacity Pounds	Boom Ang. Deg.	Jib Point Elev. Feet	Jib Capacity Pounds	Boom Ang. Deg.	Jib Point Elev. Feet	Jib Capacity Pounds	
<b>120 Ft. BOOM</b>										
45	80.0	196.3	26,500 *							45
50	78.5	195.2	25,900 *							50
55	77.0	193.9	25,400 *	80.7	192.4	23,200*				55
60	75.4	192.5	24,800 *	79.1	191.0	22,700*				60
65	73.9	191.0	24,300 *	77.5	189.5	22,300*				65
70	72.3	189.3	23,800 *	76.0	187.8	21,900*	79.8	184.2	15,900*	70
75	70.7	187.4	23,300 *	74.4	185.9	21,400*	78.1	182.3	15,900*	75
80	69.1	185.4	22,900 *	72.7	183.9	21,000*	76.5	180.3	15,900*	80
85	67.5	183.3	22,400 *	71.1	181.7	20,600*	74.8	178.0	15,900*	85
90	65.8	180.9	21,900 *	69.4	179.3	20,200*	73.1	175.6	15,900*	90
100	62.5	175.7	21,100 *	66.0	174.0	19,500*	69.6	170.2	15,900*	100
110	59.0	169.7	20,300 *	62.5	167.9	18,800*	66.0	164.0	15,900*	110
120	55.4	162.8	19,500 *	58.9	161.0	18,100*	62.3	156.8	15,400*	120
130	51.6	154.9	18,700 *	55.0	153.0	17,600*	58.3	148.6	14,500*	130
140	47.5	145.8	18,000 *	50.9	143.8	17,000*	54.1	139.1	13,800*	140
150	43.2	135.3	17,400 *	46.5	133.1	16,600*	49.5	128.0	13,200*	150
160	38.5	122.9	16,900 *	41.7	120.5	15,700*	44.5	114.8	12,600*	160
170	33.1	108.1	16,400 *	36.2	105.3	14,900*				170
180	26.8	89.5	15,600							180
<b>130 Ft. BOOM</b>										
45	80.5	206.5	26,700 *							45
50	79.1	205.4	26,100 *							50
55	77.6	204.2	25,600 *							55
60	76.2	202.9	25,100 *	79.7	201.4	22,900*				60
65	74.7	201.5	24,600 *	78.2	199.9	22,500*				65
70	73.2	199.9	24,100 *	76.7	198.3	22,000*	80.3	194.7	16,300*	70
75	71.7	198.1	23,700 *	75.2	196.5	21,600*	78.8	192.9	16,300*	75
80	70.2	196.2	23,200 *	73.7	194.6	21,200*	77.2	191.0	16,300*	80
85	68.7	194.2	22,700 *	72.1	192.6	20,900*	75.6	188.9	16,300*	85
90	67.1	192.0	22,300 *	70.5	190.3	20,500*	74.0	186.6	16,300*	90
100	64.0	187.1	21,500 *	67.4	185.4	19,800*	70.8	181.5	16,300*	100
110	60.7	181.4	20,700 *	64.1	179.7	19,100*	67.4	175.7	16,300*	110
120	57.3	175.0	19,900 *	60.7	173.2	18,500*	63.9	169.1	15,800*	120
130	53.8	167.7	19,200 *	57.1	165.8	17,900*	60.3	161.5	14,900*	130
140	50.1	159.4	18,500 *	53.4	157.4	17,300*	56.4	152.8	14,200*	140
150	46.2	149.9	17,800 *	49.4	147.8	16,900*	52.3	142.9	13,500*	150
160	42.0	139.0	17,300 *	45.2	136.7	16,300*	47.9	131.3	13,000*	160
170	37.4	126.2	16,700 *	40.5	123.6	15,500*	43.0	117.6	12,500*	170
180	32.2	110.9	15,300	35.1	107.9	14,800*				180
190	26.1	91.7	13,900							190

# Manitowoc Cranes, Inc.

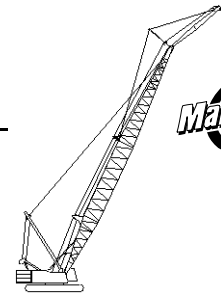
Manitowoc, Wisconsin 54220 U.S.A.



## Liftcrane Jib Capacities

New York City Code  
 Jib No. 134 With 12 Ft. 6 in. Strut On  
 Boom No. 82LR  
 149,600 Lb. Counterweight  
 360 Degree Rating

Meets  
 ANSI B30.5  
 Requirements



## 999 SERIES 1

### 70 Ft. JIB

Jib Oper. Rad. Feet	5 Degree Offset			15 Degree Offset			25 Degree Offset			Jib Oper. Rad. Feet
	Boom Ang. Deg.	Jib Point Elev. Feet	Jib Capacity Pounds	Boom Ang. Deg.	Jib Point Elev. Feet	Jib Capacity Pounds	Boom Ang. Deg.	Jib Point Elev. Feet	Jib Capacity Pounds	
<b>140 Ft. BOOM</b>										
50	79.6	215.7	26,300 *							50
55	78.2	214.5	25,800 *							55
60	76.8	213.3	25,300 *	80.2	211.7	23,000*				60
65	75.4	211.9	24,900 *	78.8	210.3	22,600*				65
70	74.0	210.4	24,400 *	77.4	208.8	22,200*	80.8	205.1	16,700*	70
75	72.6	208.7	23,900 *	75.9	207.1	21,800*	79.3	203.4	16,700*	75
80	71.2	206.9	23,500 *	74.5	205.3	21,500*	77.9	201.6	16,700*	80
85	69.7	205.0	23,000 *	73.0	203.4	21,100*	76.4	199.6	16,700*	85
90	68.3	202.9	22,600 *	71.5	201.3	20,700*	74.9	197.4	16,700*	90
100	65.3	198.3	21,800 *	68.5	196.6	20,000*	71.8	192.7	16,700*	100
110	62.2	193.0	21,000 *	65.4	191.2	19,400*	68.7	187.2	16,700*	110
120	59.1	187.0	20,300 *	62.3	185.2	18,700*	65.4	181.0	16,100*	120
130	55.8	180.2	19,600 *	59.0	178.3	18,200*	62.0	174.0	15,300*	130
140	52.4	172.5	18,900 *	55.5	170.6	17,600*	58.5	166.0	14,600*	140
150	48.8	163.8	18,300 *	51.9	161.8	17,100*	54.7	157.0	13,900*	150
160	45.0	154.0	17,700 *	48.0	151.7	16,700*	50.8	146.6	13,300*	160
170	40.9	142.6	16,700	43.9	140.2	16,100*	46.4	134.6	12,800*	170
180	36.5	129.4	15,000	39.3	126.7	15,300*				180
190	31.4	113.6	13,600	34.1	110.5	13,800				190
200	25.4	93.8	12,200							200



# Liftcrane Jib Capacities

New York City Code  
Jib No. 134 With 12 Ft. 6 in. Strut On  
Boom No. 82LR  
149,600 Lb. Counterweight  
360 Degree Rating

Meets  
ANSI B30.5  
Requirements

## 999 SERIES 1

### 70 Ft. JIB

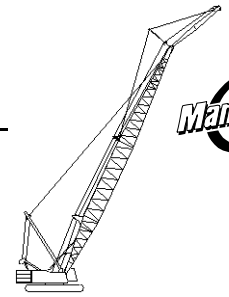
Jib Oper. Rad. Feet	5 Degree Offset			15 Degree Offset			25 Degree Offset			Jib Oper. Rad. Feet
	Boom Ang. Deg.	Jib Point Elev. Feet	Jib Capacity Pounds	Boom Ang. Deg.	Jib Point Elev. Feet	Jib Capacity Pounds	Boom Ang. Deg.	Jib Point Elev. Feet	Jib Capacity Pounds	
<b>150 Ft. BOOM</b>										
50	80.1	225.9	26,500 *							50
55	78.8	224.8	26,000 *							55
60	77.5	223.6	25,500 *	80.6	222.0	23,200*				60
65	76.1	222.3	25,100 *	79.3	220.7	22,800*				65
70	74.8	220.8	24,600 *	77.9	219.2	22,400*				70
75	73.4	219.3	24,200 *	76.6	217.6	22,000*	79.9	213.9	17,200*	75
80	72.1	217.6	23,800 *	75.2	215.9	21,700*	78.5	212.1	17,200*	80
85	70.7	215.7	23,300 *	73.8	214.1	21,300*	77.1	210.2	17,200*	85
90	69.3	213.8	22,900 *	72.4	212.1	20,900*	75.6	208.2	17,200*	90
100	66.5	209.4	22,100 *	69.6	207.7	20,300*	72.7	203.7	17,200*	100
110	63.6	204.4	21,400 *	66.7	202.6	19,600*	69.8	198.6	17,200*	110
120	60.6	198.7	20,600 *	63.7	196.9	19,000*	66.7	192.8	16,500*	120
130	57.6	192.4	20,000 *	60.6	190.5	18,400*	63.5	186.2	15,700*	130
140	54.4	185.2	19,300 *	57.4	183.3	17,900*	60.3	178.8	14,900*	140
150	51.1	177.2	18,600 *	54.1	175.2	17,400*	56.8	170.4	14,200*	150
160	47.6	168.2	18,100 *	50.5	166.0	17,000*	53.2	161.0	13,700*	160
170	43.9	157.9	16,300	46.8	155.6	16,600*	49.3	150.2	13,100*	170
180	39.9	146.1	14,700	42.7	143.6	15,100	45.1	137.7	12,700*	180
190	35.6	132.5	13,200	38.3	129.7	13,600				190
200	30.6	116.2	11,900	33.2	113.0	12,200				200
210	24.8	95.9	10,700							210



# Liftcrane Jib Capacities

New York City Code  
Jib No. 134 With 12 Ft. 6 in. Strut On  
Boom No. 82LR  
149,600 Lb. Counterweight  
360 Degree Rating

Meets  
ANSI B30.5  
Requirements



## 999 SERIES 1

### 70 Ft. JIB

Jib Oper. Rad. Feet	5 Degree Offset			15 Degree Offset			25 Degree Offset			Jib Oper. Rad. Feet
	Boom Ang. Deg.	Jib Point Elev. Feet	Jib Capacity Pounds	Boom Ang. Deg.	Jib Point Elev. Feet	Jib Capacity Pounds	Boom Ang. Deg.	Jib Point Elev. Feet	Jib Capacity Pounds	
<b>160 Ft. BOOM</b>										
50	80.5	236.1	26,700 *							50
55	79.3	235.0	26,200 *							55
60	78.0	233.9	25,700 *							60
65	76.7	232.6	25,300 *	79.8	231.0	22,900*				65
70	75.5	231.3	24,900 *	78.5	229.6	22,500*				70
75	74.2	229.8	24,400 *	77.2	228.1	22,200*	80.3	224.3	17,500*	75
80	72.9	228.1	24,000 *	75.9	226.5	21,800*	79.0	222.6	17,500*	80
85	71.6	226.4	23,600 *	74.6	224.7	21,500*	77.7	220.8	17,500*	85
90	70.2	224.5	23,200 *	73.2	222.8	21,100*	76.3	218.9	17,500*	90
100	67.6	220.4	22,400 *	70.5	218.6	20,500*	73.6	214.6	17,500*	100
110	64.8	215.6	21,700 *	67.8	213.9	19,900*	70.7	209.8	17,500*	110
120	62.0	210.3	21,000 *	65.0	208.5	19,300*	67.9	204.3	16,900*	120
130	59.2	204.3	20,300 *	62.1	202.5	18,700*	64.9	198.1	16,000*	130
140	56.2	197.6	19,700 *	59.1	195.7	18,200*	61.8	191.2	15,300*	140
150	53.1	190.1	19,000 *	55.9	188.1	17,700*	58.6	183.4	14,600*	150
160	49.9	181.8	17,700	52.7	179.6	17,200*	55.3	174.7	14,000*	160
170	46.5	172.3	15,800	49.3	170.1	16,400	51.7	164.9	13,500*	170
180	42.9	161.7	14,200	45.6	159.3	14,600	48.0	153.7	13,000*	180
190	39.0	149.6	12,700	41.6	146.9	13,100	43.8	140.8	12,600*	190
200	34.7	135.5	11,400	37.3	132.6	11,700				200
210	29.9	118.8	10,200	32.3	115.4	10,500				210
220	24.2	97.9	9,100							220



# Liftcrane Jib Capacities

New York City Code  
 Jib No. 134 With 12 Ft. 6 in. Strut On  
 Boom No. 82LR  
 149,600 Lb. Counterweight  
 360 Degree Rating

Meets  
 ANSI B30.5  
 Requirements

## 999 SERIES 1

### 70 Ft. JIB

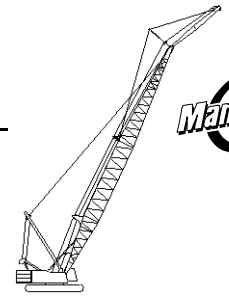
Jib Oper. Rad. Feet	5 Degree Offset			15 Degree Offset			25 Degree Offset			Jib Oper. Rad. Feet
	Boom Ang. Deg.	Jib Point Elev. Feet	Jib Capacity Pounds	Boom Ang. Deg.	Jib Point Elev. Feet	Jib Capacity Pounds	Boom Ang. Deg.	Jib Point Elev. Feet	Jib Capacity Pounds	
<b>170 Ft. BOOM</b>										
55	79.7	245.2	26,400 *							55
60	78.5	244.2	25,900 *							60
65	77.3	243.0	25,500 *	80.2	241.3	23,000*				65
70	76.1	241.6	25,100 *	79.0	240.0	22,700*				70
75	74.8	240.2	24,700 *	77.7	238.5	22,300*	80.8	234.7	17,800*	75
80	73.6	238.7	24,300 *	76.5	237.0	22,000*	79.5	233.1	17,800*	80
85	72.4	237.0	23,900 *	75.2	235.3	21,700*	78.2	231.4	17,800*	85
90	71.1	235.2	23,500 *	74.0	233.5	21,300*	76.9	229.5	17,800*	90
100	68.6	231.2	22,700 *	71.4	229.5	20,700*	74.3	225.5	17,800*	100
110	66.0	226.8	22,000 *	68.8	225.0	20,100*	71.6	220.9	17,800*	110
120	63.3	221.7	21,300 *	66.1	219.9	19,500*	68.9	215.7	17,200*	120
130	60.6	216.1	20,600 *	63.4	214.2	19,000*	66.1	209.9	16,300*	130
140	57.8	209.8	20,000 *	60.6	207.8	18,400*	63.2	203.4	15,600*	140
150	54.9	202.7	19,400 *	57.6	200.7	17,900*	60.2	196.1	14,900*	150
160	51.9	194.9	17,300	54.6	192.8	17,500*	57.1	188.0	14,300*	160
170	48.8	186.2	15,500	51.4	184.0	16,000	53.9	178.9	13,800*	170
180	45.4	176.4	13,800	48.1	174.1	14,300	50.4	168.7	13,300*	180
190	41.9	165.4	12,400	44.5	162.9	12,800	46.7	157.1	12,900*	190
200	38.1	152.9	11,000	40.6	150.2	11,400	42.7	143.9	11,700	200
210	34.0	138.4	9,900	36.4	135.4	10,200				210
220	29.3	121.3	8,800	31.5	117.8	9,000				220
230	23.7	99.9	7,800							230



# Liftcrane Jib Capacities

New York City Code  
Jib No. 134 With 12 Ft. 6 in. Strut On  
Boom No. 82LR  
149,600 Lb. Counterweight  
360 Degree Rating

Meets  
ANSI B30.5  
Requirements



## 999 SERIES 1

### 70 Ft. JIB

Jib Oper. Rad. Feet	5 Degree Offset			15 Degree Offset			25 Degree Offset			Jib Oper. Rad. Feet
	Boom Ang. Deg.	Jib Point Elev. Feet	Jib Capacity Pounds	Boom Ang. Deg.	Jib Point Elev. Feet	Jib Capacity Pounds	Boom Ang. Deg.	Jib Point Elev. Feet	Jib Capacity Pounds	
<b>180 Ft. BOOM</b>										
55	80.1	255.4	26,500 *							55
60	79.0	254.4	26,100 *							60
65	77.8	253.2	25,700 *	80.6	251.6	23,200*				65
70	76.6	252.0	25,300 *	79.4	250.3	22,800*				70
75	75.5	250.6	24,900 *	78.2	248.9	22,500*				75
80	74.3	249.1	24,500 *	77.1	247.4	22,100*	79.9	243.5	18,100*	80
85	73.1	247.5	24,100 *	75.9	245.8	21,800*	78.7	241.9	18,100*	85
90	71.9	245.8	23,700 *	74.6	244.1	21,500*	77.5	240.1	18,100*	90
100	69.4	242.1	23,000 *	72.2	240.3	20,900*	75.0	236.2	18,100*	100
110	67.0	237.8	22,300 *	69.7	236.0	20,300*	72.4	231.9	18,100*	110
120	64.5	233.0	21,600 *	67.2	231.1	19,700*	69.9	226.9	17,500*	120
130	61.9	227.6	20,900 *	64.6	225.7	19,200*	67.2	221.4	16,700*	130
140	59.2	221.7	20,300 *	61.9	219.7	18,700*	64.5	215.3	15,900*	140
150	56.5	215.0	19,100	59.1	213.0	18,200*	61.7	208.4	15,200*	150
160	53.7	207.7	17,000	56.3	205.6	17,600	58.8	200.9	14,600*	160
170	50.8	199.6	15,100	53.3	197.4	15,700	55.7	192.4	14,100*	170
180	47.7	190.5	13,500	50.2	188.3	14,000	52.5	183.0	13,600*	180
190	44.5	180.4	12,000	47.0	178.0	12,500	49.1	172.4	12,900	190
200	41.0	169.1	10,700	43.5	166.5	11,100	45.5	160.5	11,500	200
210	37.3	156.2	9,500	39.7	153.4	9,800				210
220	33.2	141.3	8,400	35.5	138.2	8,700				220
230	28.6	123.7	7,400	30.8	120.1	7,600				230
240	23.2	101.8	6,500							240





# Liftcrane Jib Capacities

New York City Code  
 Jib No. 134 With 12 Ft. 6 in. Strut On  
 Boom No. 82LR  
 149,600 Lb. Counterweight  
 360 Degree Rating

Meets  
 ANSI B30.5  
 Requirements

## 999 SERIES 1

### 70 Ft. JIB

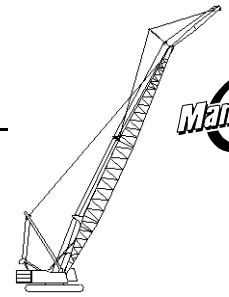
Jib Oper. Rad. Feet	5 Degree Offset			15 Degree Offset			25 Degree Offset			Jib Oper. Rad. Feet
	Boom Ang. Deg.	Jib Point Elev. Feet	Jib Capacity Pounds	Boom Ang. Deg.	Jib Point Elev. Feet	Jib Capacity Pounds	Boom Ang. Deg.	Jib Point Elev. Feet	Jib Capacity Pounds	
<b>190 Ft. BOOM</b>										
55	80.5	265.6	26,700 *							55
60	79.4	264.6	26,300 *							60
65	78.3	263.5	25,900 *							65
70	77.2	262.3	25,500 *	79.9	260.6	22,900*				70
75	76.0	261.0	25,100 *	78.7	259.3	22,600*				75
80	74.9	259.6	24,700 *	77.6	257.8	22,300*	80.3	253.9	18,200*	80
85	73.7	258.1	24,300 *	76.4	256.3	22,000*	79.2	252.3	18,200*	85
90	72.6	256.4	24,000 *	75.3	254.7	21,700*	78.0	250.6	18,200*	90
100	70.3	252.8	23,200 *	72.9	251.0	21,100*	75.6	246.9	18,200*	100
110	67.9	248.7	22,500 *	70.5	246.9	20,500*	73.2	242.7	18,200*	110
120	65.5	244.1	21,700	68.1	242.3	19,900*	70.7	238.1	17,800*	120
130	63.1	239.0	18,400	65.6	237.2	19,400*	68.2	232.8	17,000*	130
140	60.5	233.4	15,700	63.1	231.4	16,900	65.6	227.0	16,200*	140
150	58.0	227.1	13,400	60.5	225.1	14,400	63.0	220.5	15,400	150
160	55.3	220.2	11,300	57.8	218.1	12,300	60.2	213.4	13,200	160
170	52.6	212.6	9,600	55.0	210.4	10,400	57.4	205.5	11,200	170
180	49.7	204.1	8,000	52.2	201.9	8,700	54.4	196.7	9,400	180
190	46.7	194.8	6,600	49.1	192.4	7,200	51.3	187.0	7,800	190
200	43.5	184.3	5,300	45.9	181.8	5,900	48.0	176.1	6,400	200
210	40.2	172.6	4,200	42.5	170.0	4,700	44.4	163.8	5,100	210



# Liftcrane Jib Capacities

New York City Code  
 Jib No. 134 With 12 Ft. 6 in. Strut On  
 Boom No. 82LR  
 149,600 Lb. Counterweight  
 360 Degree Rating

Meets  
 ANSI B30.5  
 Requirements



## 999 SERIES 1

### 70 Ft. JIB

Jib Oper. Rad. Feet	5 Degree Offset			15 Degree Offset			25 Degree Offset			Jib Oper. Rad. Feet
	Boom Ang. Deg.	Jib Point Elev. Feet	Jib Capacity Pounds	Boom Ang. Deg.	Jib Point Elev. Feet	Jib Capacity Pounds	Boom Ang. Deg.	Jib Point Elev. Feet	Jib Capacity Pounds	
<b>200 Ft. BOOM</b>										
55	80.9	275.8	26,800 *							55
60	79.8	274.8	26,400 *							60
65	78.7	273.8	26,000 *							65
70	77.6	272.6	25,600 *	80.2	270.9	23,100*				70
75	76.6	271.3	25,300 *	79.1	269.6	22,700*				75
80	75.5	270.0	24,900 *	78.0	268.2	22,400*	80.7	264.2	18,300*	80
85	74.4	268.5	24,500 *	76.9	266.8	22,100*	79.6	262.7	18,300*	85
90	73.3	266.9	24,200 *	75.8	265.2	21,800*	78.5	261.1	18,300*	90
100	71.0	263.5	23,500 *	73.6	261.7	21,200*	76.2	257.6	18,300*	100
110	68.8	259.6	22,800 *	71.3	257.8	20,700*	73.9	253.6	18,300*	110
120	66.5	255.2	21,000	69.0	253.3	20,100*	71.5	249.1	18,100*	120
130	64.1	250.3	17,800	66.6	248.4	19,100	69.1	244.1	17,300*	130
140	61.7	244.9	15,000	64.2	243.0	16,200	66.7	238.6	16,500*	140
150	59.3	239.0	12,700	61.7	237.0	13,800	64.1	232.4	14,900	150
160	56.8	232.4	10,600	59.2	230.4	11,600	61.5	225.7	12,600	160
170	54.2	225.2	8,800	56.6	223.1	9,700	58.9	218.2	10,600	170
180	51.5	217.3	7,300	53.9	215.1	8,100	56.1	210.0	8,800	180
190	48.7	208.6	5,800	51.0	206.3	6,600	53.2	201.0	7,300	190
200	45.8	198.9	4,600	48.1	196.5	5,200	50.1	190.9	5,800	200
210				44.9	185.6	4,000	46.9	179.7	4,500	210



# Liftcrane Jib Capacities

New York City Code  
Jib No. 134 With 12 Ft. 6 in. Strut On  
Boom No. 82LR  
149,600 Lb. Counterweight  
360 Degree Rating

Meets  
ANSI B30.5  
Requirements

## 999 SERIES 1

### 70 Ft. JIB

Jib Oper. Rad. Feet	5 Degree Offset			15 Degree Offset			25 Degree Offset			Jib Oper. Rad. Feet
	Boom Ang. Deg.	Jib Point Elev. Feet	Jib Capacity Pounds	Boom Ang. Deg.	Jib Point Elev. Feet	Jib Capacity Pounds	Boom Ang. Deg.	Jib Point Elev. Feet	Jib Capacity Pounds	
<b>210 Ft. BOOM</b>										
60	80.2	285.0	26,600 *							60
65	79.1	284.0	26,200 *							65
70	78.1	282.9	25,800 *	80.6	281.1	23,200*				70
75	77.0	281.7	25,400 *	79.5	279.9	22,800*				75
80	76.0	280.4	25,100 *	78.5	278.6	22,500*				80
85	74.9	279.0	24,700 *	77.4	277.2	22,200*	80.0	273.1	18,500*	85
90	73.9	277.4	24,400 *	76.4	275.7	22,000*	78.9	271.6	18,500*	90
100	71.7	274.1	23,700 *	74.2	272.3	21,400*	76.7	268.2	18,500*	100
110	69.6	270.4	23,000 *	72.0	268.5	20,800*	74.5	264.3	18,500*	110
120	67.4	266.2	20,400	69.8	264.3	20,300*	72.2	260.0	18,400*	120
130	65.1	261.5	17,200	67.5	259.6	18,600	69.9	255.3	17,500*	130
140	62.8	256.4	14,500	65.2	254.4	15,800	67.6	250.0	16,800*	140
150	60.5	250.7	12,100	62.9	248.7	13,300	65.2	244.2	14,400	150
160	58.1	244.5	10,100	60.5	242.4	11,100	62.7	237.7	12,200	160
170	55.7	237.6	8,300	58.0	235.5	9,200	60.2	230.7	10,200	170
180	53.1	230.1	6,700	55.4	228.0	7,600	57.6	223.0	8,400	180
190	50.5	221.9	5,300	52.8	219.7	6,100	54.9	214.5	6,800	190
200	47.7	212.9	4,000	50.0	210.5	4,700	52.0	205.1	5,400	200
210							49.0	194.7	4,100	210
<b>220 Ft. BOOM</b>										
60	80.5	295.2	26,700 *							60
65	79.5	294.2	26,300 *							65
70	78.5	293.1	26,000 *							70
75	77.5	292.0	25,600 *	79.9	290.2	23,000*				75
80	76.5	290.7	25,200 *	78.9	288.9	22,700*				80
85	75.5	289.4	24,900 *	77.9	287.6	22,400*	80.3	283.5	18,500*	85
90	74.4	287.9	24,600 *	76.8	286.1	22,100*	79.3	282.0	18,500*	90
100	72.4	284.7	23,900 *	74.8	282.9	21,500*	77.2	278.7	18,500*	100
110	70.3	281.1	23,200 *	72.7	279.2	21,000*	75.1	275.0	18,500*	110
120	68.2	277.1	19,900	70.5	275.2	20,500*	72.9	270.9	18,500*	120
130	66.0	272.6	16,700	68.4	270.7	18,200	70.7	266.3	17,800*	130
140	63.9	267.7	13,900	66.2	265.7	15,300	68.5	261.3	16,600	140
150	61.6	262.3	11,600	63.9	260.3	12,800	66.2	255.7	14,000	150
160	59.3	256.3	9,500	61.6	254.3	10,600	63.8	249.6	11,700	160
170	57.0	249.8	7,700	59.3	247.7	8,700	61.4	242.9	9,700	170
180	54.6	242.7	6,100	56.8	240.6	7,100	58.9	235.6	7,900	180
190	52.1	235.0	4,700	54.3	232.7	5,600	56.4	227.6	6,300	190
200				51.7	224.2	4,200	53.7	218.8	4,900	200



# Liftcrane Jib Capacities

New York City Code  
Jib No. 134 With 12 Ft. 6 in. Strut On  
Boom No. 82LR  
149,600 Lb. Counterweight  
360 Degree Rating

Meets  
ANSI B30.5  
Requirements

## 999 SERIES 1

### 70 Ft. JIB

Jib Oper. Rad. Feet	5 Degree Offset			15 Degree Offset			25 Degree Offset			Jib Oper. Rad. Feet
	Boom Ang. Deg.	Jib Point Elev. Feet	Jib Capacity Pounds	Boom Ang. Deg.	Jib Point Elev. Feet	Jib Capacity Pounds	Boom Ang. Deg.	Jib Point Elev. Feet	Jib Capacity Pounds	
<b>230 Ft. BOOM</b>										
60	80.8	305.4	26,800 *							60
65	79.9	304.4	26,500 *							65
70	78.9	303.4	26,100 *							70
75	77.9	302.3	25,700 *	80.3	300.5	23,100*				75
80	76.9	301.0	25,400 *	79.3	299.2	22,800*				80
85	76.0	299.7	25,100 *	78.3	297.9	22,500*	80.7	293.8	18,400*	85
90	75.0	298.3	24,700 *	77.3	296.5	22,200*	79.7	292.4	18,400*	90
100	73.0	295.2	24,100 *	75.3	293.4	21,700*	77.6	289.2	18,400*	100
110	71.0	291.8	23,300	73.3	289.9	21,100*	75.6	285.7	18,400*	110
120	68.9	287.9	19,400	71.2	286.0	20,600*	73.5	281.7	18,400*	120
130	66.9	283.6	16,100	69.1	281.7	17,700	71.4	277.3	18,100*	130
140	64.8	278.9	13,400	67.0	276.9	14,800	69.3	272.5	16,200	140
150	62.7	273.7	11,000	64.9	271.7	12,300	67.1	267.2	13,600	150
160	60.5	268.0	9,000	62.7	266.0	10,100	64.8	261.3	11,300	160
170	58.2	261.8	7,200	60.4	259.7	8,200	62.5	255.0	9,300	170
180	55.9	255.1	5,600	58.1	252.9	6,600	60.2	248.0	7,500	180
190	53.6	247.7	4,200	55.8	245.5	5,100	57.8	240.4	5,900	190
200							55.2	232.2	4,500	200
<b>240 Ft. BOOM</b>										
65	80.2	314.6	26,600 *							65
70	79.3	313.6	26,200 *							70
75	78.3	312.5	25,900 *	80.6	310.7	23,200*				75
80	77.4	311.3	25,600 *	79.6	309.5	22,900*				80
85	76.4	310.1	25,200 *	78.7	308.3	22,600*				85
90	75.5	308.7	24,900 *	77.7	306.9	22,300*	80.0	302.7	18,300*	90
100	73.6	305.7	24,300 *	75.8	303.9	21,800*	78.1	299.7	18,300*	100
110	71.6	302.4	22,600	73.8	300.5	21,300*	76.1	296.3	18,300*	110
120	69.7	298.7	18,700	71.9	296.8	20,500	74.1	292.4	18,300*	120
130	67.7	294.5	15,400	69.9	292.6	17,100	72.1	288.2	18,300*	130
140	65.7	290.0	12,700	67.8	288.0	14,200	70.0	283.6	15,700	140
150	63.6	285.0	10,300	65.8	283.0	11,700	67.9	278.5	13,000	150
160	61.5	279.6	8,300	63.7	277.5	9,500	65.8	272.9	10,700	160
170	59.4	273.6	6,500	61.5	271.6	7,600	63.6	266.8	8,700	170
180	57.2	267.2	4,900	59.3	265.1	5,900	61.3	260.2	6,900	180
190				57.1	258.0	4,400	59.0	253.0	5,300	190



# Liftcrane Jib Capacities

New York City Code  
Jib No. 134 With 12 Ft. 6 in. Strut On  
Boom No. 82LR  
149,600 Lb. Counterweight  
360 Degree Rating

Meets  
ANSI B30.5  
Requirements

## 999 SERIES 1

### 80 Ft. JIB

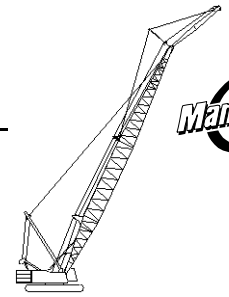
Jib Oper. Rad. Feet	5 Degree Offset			15 Degree Offset			25 Degree Offset			Jib Oper. Rad. Feet
	Boom Ang. Deg.	Jib Point Elev. Feet	Jib Capacity Pounds	Boom Ang. Deg.	Jib Point Elev. Feet	Jib Capacity Pounds	Boom Ang. Deg.	Jib Point Elev. Feet	Jib Capacity Pounds	
<b>120 Ft. BOOM</b>										
45	80.2	206.6	20,500 *							45
50	78.8	205.5	20,300 *							50
55	77.3	204.3	20,200 *							55
60	75.9	203.0	20,100 *	79.9	201.6	19,300*				60
65	74.4	201.5	19,900 *	78.4	200.1	18,900*				65
70	72.9	199.9	19,800 *	76.9	198.5	18,500*				70
75	71.4	198.2	19,700 *	75.4	196.8	18,100*	79.6	193.2	12,900*	75
80	69.9	196.3	19,300 *	73.9	194.9	17,700*	78.1	191.2	12,900*	80
85	68.4	194.3	18,900 *	72.3	192.8	17,400*	76.5	189.1	12,900*	85
90	66.8	192.1	18,500 *	70.8	190.6	17,000*	74.9	186.9	12,900*	90
100	63.7	187.1	17,700 *	67.6	185.6	16,300*	71.6	181.8	12,900*	100
110	60.4	181.5	17,000 *	64.3	179.9	15,700*	68.3	176.0	12,900*	110
120	57.0	175.1	16,300 *	60.9	173.5	15,100*	64.8	169.4	12,900*	120
130	53.5	167.8	15,600 *	57.4	166.1	14,600*	61.2	161.8	12,800*	130
140	49.9	159.5	15,000 *	53.7	157.7	14,100*	57.3	153.2	12,100*	140
150	45.9	150.0	14,400 *	49.7	148.1	13,600*	53.2	143.2	11,500*	150
160	41.7	139.1	13,900 *	45.4	137.0	13,200*	48.8	131.7	11,000*	160
170	37.1	126.3	13,400 *	40.8	124.0	12,800*	43.9	118.1	10,500*	170
180	32.0	111.0	12,900 *	35.5	108.4	12,500*				180
190	25.8	91.8	12,500 *	29.1	88.5	11,900*				190



# Liftcrane Jib Capacities

New York City Code  
 Jib No. 134 With 12 Ft. 6 in. Strut On  
 Boom No. 82LR  
 149,600 Lb. Counterweight  
 360 Degree Rating

Meets  
 ANSI B30.5  
 Requirements



## 999 SERIES 1

### 80 Ft. JIB

Jib Oper. Rad. Feet	5 Degree Offset			15 Degree Offset			25 Degree Offset			Jib Oper. Rad. Feet
	Boom Ang. Deg.	Jib Point Elev. Feet	Jib Capacity Pounds	Boom Ang. Deg.	Jib Point Elev. Feet	Jib Capacity Pounds	Boom Ang. Deg.	Jib Point Elev. Feet	Jib Capacity Pounds	
<b>130 Ft. BOOM</b>										
45	80.7	216.7	20,500 *							45
50	79.3	215.7	20,400 *							50
55	77.9	214.6	20,300 *							55
60	76.6	213.4	20,100 *	80.4	211.9	19,400*				60
65	75.2	212.0	20,000 *	79.0	210.5	19,000*				65
70	73.7	210.5	19,900 *	77.6	209.0	18,600*				70
75	72.3	208.8	19,800 *	76.1	207.3	18,300*	80.1	203.7	13,400*	75
80	70.9	207.0	19,600 *	74.7	205.5	17,900*	78.7	201.8	13,400*	80
85	69.4	205.1	19,200 *	73.2	203.6	17,600*	77.2	199.8	13,400*	85
90	68.0	203.0	18,800 *	71.8	201.5	17,200*	75.7	197.7	13,400*	90
100	65.0	198.4	18,100 *	68.8	196.8	16,600*	72.6	192.9	13,400*	100
110	61.9	193.1	17,300 *	65.7	191.5	16,000*	69.5	187.5	13,400*	110
120	58.8	187.1	16,700 *	62.5	185.4	15,400*	66.2	181.3	13,400*	120
130	55.5	180.3	16,000 *	59.2	178.6	14,800*	62.8	174.3	13,200*	130
140	52.1	172.6	15,400 *	55.8	170.8	14,300*	59.3	166.3	12,500*	140
150	48.6	164.0	14,800 *	52.2	162.1	13,900*	55.6	157.3	11,900*	150
160	44.8	154.1	14,300 *	48.3	152.0	13,500*	51.6	146.9	11,300*	160
170	40.7	142.7	13,800 *	44.2	140.5	13,100*	47.3	134.9	10,800*	170
180	36.2	129.5	13,300 *	39.6	127.1	12,700*	42.5	120.8	10,400*	180
190	31.2	113.7	12,900 *	34.4	110.9	12,400*				190
200	25.2	94.0	12,500 *							200



# Liftcrane Jib Capacities

New York City Code  
 Jib No. 134 With 12 Ft. 6 in. Strut On  
 Boom No. 82LR  
 149,600 Lb. Counterweight  
 360 Degree Rating

Meets  
 ANSI B30.5  
 Requirements

## 999 SERIES 1

### 80 Ft. JIB

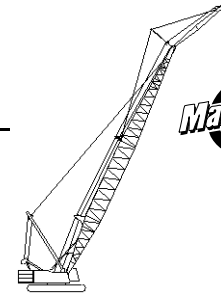
Jib Oper. Rad. Feet	5 Degree Offset			15 Degree Offset			25 Degree Offset			Jib Oper. Rad. Feet
	Boom Ang. Deg.	Jib Point Elev. Feet	Jib Capacity Pounds	Boom Ang. Deg.	Jib Point Elev. Feet	Jib Capacity Pounds	Boom Ang. Deg.	Jib Point Elev. Feet	Jib Capacity Pounds	
<b>140 Ft. BOOM</b>										
50	79.8	225.9	20,400 *							50
55	78.5	224.9	20,300 *							55
60	77.2	223.7	20,200 *	80.9	222.2	19,500*				60
65	75.8	222.4	20,100 *	79.5	220.9	19,200*				65
70	74.5	220.9	19,900 *	78.2	219.4	18,800*				70
75	73.1	219.3	19,800 *	76.8	217.8	18,400*	80.6	214.1	13,700*	75
80	71.8	217.6	19,700 *	75.4	216.1	18,100*	79.2	212.3	13,700*	80
85	70.4	215.8	19,500 *	74.0	214.3	17,800*	77.8	210.5	13,700*	85
90	69.0	213.8	19,100 *	72.6	212.3	17,400*	76.4	208.4	13,700*	90
100	66.2	209.5	18,400 *	69.8	207.9	16,800*	73.5	203.9	13,700*	100
110	63.3	204.5	17,700 *	66.9	202.9	16,200*	70.5	198.8	13,700*	110
120	60.4	198.8	17,000 *	63.9	197.2	15,600*	67.5	193.0	13,700*	120
130	57.3	192.5	16,300 *	60.8	190.8	15,100*	64.3	186.4	13,500*	130
140	54.1	185.3	15,700 *	57.6	183.6	14,600*	61.0	179.1	12,800*	140
150	50.8	177.3	15,200 *	54.3	175.4	14,100*	57.6	170.7	12,200*	150
160	47.4	168.3	14,600 *	50.8	166.3	13,700*	54.0	161.3	11,600*	160
170	43.7	158.0	14,100 *	47.0	155.9	13,300*	50.1	150.5	11,100*	170
180	39.7	146.3	13,600 *	43.0	143.9	13,000*	45.9	138.1	10,700*	180
190	35.3	132.6	13,200 *	38.5	130.0	12,700*	41.2	123.5	10,300*	190
200	30.4	116.4	12,300	33.5	113.4	12,300*				200
210	24.6	96.1	11,100							210



# Liftcrane Jib Capacities

New York City Code  
 Jib No. 134 With 12 Ft. 6 in. Strut On  
 Boom No. 82LR  
 149,600 Lb. Counterweight  
 360 Degree Rating

Meets  
 ANSI B30.5  
 Requirements



## 999 SERIES 1

### 80 Ft. JIB

Jib Oper. Rad. Feet	5 Degree Offset			15 Degree Offset			25 Degree Offset			Jib Oper. Rad. Feet
	Boom Ang. Deg.	Jib Point Elev. Feet	Jib Capacity Pounds	Boom Ang. Deg.	Jib Point Elev. Feet	Jib Capacity Pounds	Boom Ang. Deg.	Jib Point Elev. Feet	Jib Capacity Pounds	
<b>150 Ft. BOOM</b>										
50	80.3	236.1	20,500 *							50
55	79.0	235.1	20,400 *							55
60	77.7	234.0	20,200 *							60
65	76.5	232.7	20,100 *	80.0	231.2	19,300*				65
70	75.2	231.3	20,000 *	78.7	229.8	18,900*				70
75	73.9	229.8	19,900 *	77.4	228.3	18,600*				75
80	72.6	228.2	19,800 *	76.1	226.7	18,300*	79.7	222.8	14,100*	80
85	71.3	226.5	19,700 *	74.8	224.9	17,900*	78.4	221.0	14,100*	85
90	70.0	224.6	19,400 *	73.4	223.0	17,600*	77.0	219.1	14,100*	90
100	67.3	220.4	18,700 *	70.7	218.8	17,000*	74.3	214.8	14,100*	100
110	64.6	215.7	18,000 *	68.0	214.1	16,400*	71.5	210.0	14,100*	110
120	61.8	210.4	17,300 *	65.2	208.7	15,900*	68.6	204.5	14,100*	120
130	58.9	204.4	16,700 *	62.3	202.7	15,400*	65.6	198.4	13,900*	130
140	55.9	197.7	16,100 *	59.3	195.9	14,900*	62.6	191.4	13,100*	140
150	52.9	190.3	15,500 *	56.2	188.4	14,400*	59.4	183.7	12,500*	150
160	49.6	181.9	15,000 *	52.9	179.9	14,000*	56.0	175.0	11,900*	160
170	46.2	172.5	14,500 *	49.5	170.4	13,600*	52.5	165.2	11,400*	170
180	42.6	161.8	14,000 *	45.8	159.6	13,200*	48.7	154.0	11,000*	180
190	38.8	149.7	13,300	41.9	147.3	12,900*	44.6	141.1	10,600*	190
200	34.5	135.6	12,000	37.6	132.9	12,400				200
210	29.7	118.9	10,800	32.6	115.8	11,100				210
220	24.0	98.1	9,700							220





# Liftcrane Jib Capacities

New York City Code  
 Jib No. 134 With 12 Ft. 6 in. Strut On  
 Boom No. 82LR  
 149,600 Lb. Counterweight  
 360 Degree Rating

Meets  
 ANSI B30.5  
 Requirements

## 999 SERIES 1

### 80 Ft. JIB

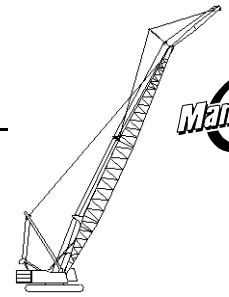
Jib Oper. Rad. Feet	5 Degree Offset			15 Degree Offset			25 Degree Offset			Jib Oper. Rad. Feet
	Boom Ang. Deg.	Jib Point Elev. Feet	Jib Capacity Pounds	Boom Ang. Deg.	Jib Point Elev. Feet	Jib Capacity Pounds	Boom Ang. Deg.	Jib Point Elev. Feet	Jib Capacity Pounds	
<b>160 Ft. BOOM</b>										
50	80.7	246.3	20,500 *							50
55	79.5	245.3	20,400 *							55
60	78.3	244.2	20,300 *							60
65	77.0	243.0	20,200 *	80.4	241.5	19,400*				65
70	75.8	241.7	20,100 *	79.2	240.2	19,100*				70
75	74.6	240.3	20,000 *	77.9	238.7	18,700*				75
80	73.3	238.7	19,800 *	76.7	237.2	18,400*	80.2	233.3	14,300*	80
85	72.1	237.1	19,700 *	75.4	235.5	18,100*	78.9	231.6	14,300*	85
90	70.8	235.3	19,600 *	74.2	233.7	17,800*	77.6	229.7	14,300*	90
100	68.3	231.3	18,900 *	71.6	229.7	17,200*	75.0	225.7	14,300*	100
110	65.7	226.9	18,300 *	69.0	225.2	16,600*	72.3	221.1	14,300*	110
120	63.1	221.8	17,600 *	66.3	220.1	16,100*	69.6	215.9	14,300*	120
130	60.3	216.2	17,000 *	63.6	214.4	15,600*	66.8	210.1	14,200*	130
140	57.5	209.9	16,400 *	60.8	208.1	15,100*	63.9	203.6	13,400*	140
150	54.7	202.8	15,800 *	57.8	201.0	14,600*	60.9	196.3	12,800*	150
160	51.6	195.0	15,300 *	54.8	193.1	14,200*	57.8	188.2	12,200*	160
170	48.5	186.3	14,800 *	51.6	184.3	13,800*	54.6	179.1	11,700*	170
180	45.2	176.6	14,300 *	48.3	174.4	13,500*	51.1	169.0	11,200*	180
190	41.7	165.6	12,800	44.7	163.2	13,100*	47.4	157.4	10,800*	190
200	37.9	153.1	11,500	40.9	150.5	11,900	43.4	144.1	10,500*	200
210	33.7	138.6	10,300	36.6	135.8	10,700				210
220	29.0	121.4	9,200	31.8	118.2	9,500				220
230	23.5	100.1	8,200							230



# Liftcrane Jib Capacities

New York City Code  
Jib No. 134 With 12 Ft. 6 in. Strut On  
Boom No. 82LR  
149,600 Lb. Counterweight  
360 Degree Rating

Meets  
ANSI B30.5  
Requirements



## 999 SERIES 1

### 80 Ft. JIB

Jib Oper. Rad. Feet	5 Degree Offset			15 Degree Offset			25 Degree Offset			Jib Oper. Rad. Feet
	Boom Ang. Deg.	Jib Point Elev. Feet	Jib Capacity Pounds	Boom Ang. Deg.	Jib Point Elev. Feet	Jib Capacity Pounds	Boom Ang. Deg.	Jib Point Elev. Feet	Jib Capacity Pounds	
<b>170 Ft. BOOM</b>										
55	79.9	255.5	20,500 *							55
60	78.7	254.5	20,300 *							60
65	77.6	253.3	20,200 *	80.8	251.8	19,500*				65
70	76.4	252.1	20,100 *	79.6	250.5	19,200*				70
75	75.2	250.7	20,000 *	78.4	249.1	18,900*				75
80	74.0	249.2	19,900 *	77.2	247.6	18,600*	80.6	243.7	14,500*	80
85	72.8	247.6	19,800 *	76.0	246.0	18,300*	79.4	242.0	14,500*	85
90	71.6	245.9	19,700 *	74.8	244.3	17,900*	78.1	240.3	14,500*	90
100	69.2	242.1	19,200 *	72.4	240.5	17,400*	75.6	236.4	14,500*	100
110	66.7	237.9	18,500 *	69.9	236.2	16,800*	73.1	232.0	14,500*	110
120	64.2	233.1	17,900 *	67.4	231.4	16,300*	70.5	227.1	14,500*	120
130	61.6	227.7	17,300 *	64.8	226.0	15,800*	67.9	221.6	14,400*	130
140	59.0	221.8	16,700 *	62.1	220.0	15,300*	65.2	215.5	13,700*	140
150	56.3	215.1	16,100 *	59.3	213.3	14,900*	62.3	208.6	13,100*	150
160	53.5	207.8	15,600 *	56.5	205.9	14,400*	59.4	201.1	12,500*	160
170	50.5	199.7	15,100 *	53.5	197.7	14,000*	56.4	192.6	12,000*	170
180	47.5	190.6	13,900	50.4	188.5	13,700*	53.2	183.2	11,500*	180
190	44.2	180.5	12,400	47.2	178.3	13,000	49.8	172.7	11,100*	190
200	40.8	169.2	11,100	43.7	166.8	11,600	46.2	160.7	10,700*	200
210	37.1	156.3	10,000	39.9	153.7	10,400	42.3	147.1	10,400*	210
220	33.0	141.5	8,900	35.8	138.6	9,200				220
230	28.4	123.9	7,900	31.1	120.5	8,200				230
240	23.0	102.0	7,000							240



# Liftcrane Jib Capacities

Meets  
 ANSI B30.5  
 Requirements

New York City Code  
 Jib No. 134 With 12 Ft. 6 in. Strut On  
 Boom No. 82LR  
 149,600 Lb. Counterweight  
 360 Degree Rating

## 999 SERIES 1

### 80 Ft. JIB

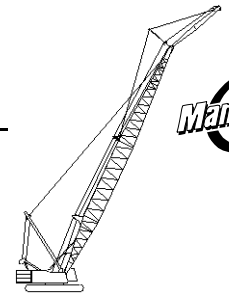
Jib Oper. Rad. Feet	5 Degree Offset			15 Degree Offset			25 Degree Offset			Jib Oper. Rad. Feet
	Boom Ang. Deg.	Jib Point Elev. Feet	Jib Capacity Pounds	Boom Ang. Deg.	Jib Point Elev. Feet	Jib Capacity Pounds	Boom Ang. Deg.	Jib Point Elev. Feet	Jib Capacity Pounds	
<b>180 Ft. BOOM</b>										
55	80.3	265.7	20,500 *							55
60	79.2	264.7	20,400 *							60
65	78.0	263.6	20,300 *							65
70	76.9	262.4	20,200 *	80.0	260.8	19,300*				70
75	75.8	261.1	20,100 *	78.9	259.5	19,000*				75
80	74.7	259.7	20,000 *	77.7	258.0	18,700*				80
85	73.5	258.1	19,900 *	76.6	256.5	18,400*	79.8	252.5	14,800*	85
90	72.4	256.5	19,800 *	75.4	254.9	18,100*	78.6	250.8	14,800*	90
100	70.0	252.9	19,400 *	73.1	251.2	17,500*	76.2	247.1	14,800*	100
110	67.7	248.8	18,800 *	70.7	247.1	17,000*	73.8	242.9	14,800*	110
120	65.3	244.2	18,200 *	68.3	242.5	16,500*	71.4	238.2	14,800*	120
130	62.8	239.1	17,500 *	65.8	237.4	16,000*	68.8	233.0	14,600*	130
140	60.3	233.5	16,200	63.3	231.7	15,500*	66.3	227.2	14,000*	140
150	57.7	227.2	13,900	60.7	225.4	15,000	63.6	220.7	13,400*	150
160	55.1	220.3	11,900	58.0	218.4	12,900	60.9	213.6	12,800*	160
170	52.3	212.7	10,100	55.2	210.7	11,000	58.0	205.7	11,900	170
180	49.5	204.2	8,600	52.4	202.1	9,400	55.1	196.9	10,200	180
190	46.5	194.9	7,200	49.3	192.7	7,900	51.9	187.2	8,600	190
200	43.3	184.5	5,900	46.1	182.1	6,600	48.6	176.3	7,200	200
210	40.0	172.8	4,800	42.7	170.3	5,300	45.1	164.0	5,900	210
220				39.0	156.8	4,200	41.3	150.0	4,700	220



# Liftcrane Jib Capacities

New York City Code  
 Jib No. 134 With 12 Ft. 6 in. Strut On  
 Boom No. 82LR  
 149,600 Lb. Counterweight  
 360 Degree Rating

Meets  
 ANSI B30.5  
 Requirements



## 999 SERIES 1

### 80 Ft. JIB

Jib Oper. Rad. Feet	5 Degree Offset			15 Degree Offset			25 Degree Offset			Jib Oper. Rad. Feet
	Boom Ang. Deg.	Jib Point Elev. Feet	Jib Capacity Pounds	Boom Ang. Deg.	Jib Point Elev. Feet	Jib Capacity Pounds	Boom Ang. Deg.	Jib Point Elev. Feet	Jib Capacity Pounds	
<b>190 Ft. BOOM</b>										
55	80.6	275.9	20,500 *							55
60	79.6	274.9	20,400 *							60
65	78.5	273.9	20,300 *							65
70	77.4	272.7	20,200 *	80.4	271.1	19,400*				70
75	76.3	271.4	20,100 *	79.3	269.8	19,100*				75
80	75.2	270.1	20,000 *	78.2	268.4	18,800*				80
85	74.1	268.6	19,900 *	77.1	267.0	18,500*	80.2	262.9	15,000*	85
90	73.0	267.0	19,800 *	76.0	265.4	18,200*	79.1	261.3	15,000*	90
100	70.8	263.6	19,600 *	73.8	261.9	17,700*	76.8	257.7	15,000*	100
110	68.5	259.7	19,000 *	71.5	258.0	17,200*	74.5	253.7	15,000*	110
120	66.3	255.3	18,400 *	69.2	253.6	16,600*	72.1	249.2	15,000*	120
130	63.9	250.4	17,800 *	66.8	248.6	16,200*	69.7	244.2	14,700*	130
140	61.5	245.0	15,700	64.4	243.2	15,700*	67.3	238.7	14,300*	140
150	59.1	239.1	13,400	61.9	237.2	14,600	64.7	232.6	13,600*	150
160	56.6	232.5	11,400	59.4	230.6	12,500	62.2	225.8	13,000*	160
170	54.0	225.3	9,600	56.8	223.4	10,600	59.5	218.4	11,500	170
180	51.3	217.4	8,000	54.1	215.4	8,900	56.7	210.2	9,800	180
190	48.5	208.7	6,600	51.2	206.5	7,400	53.8	201.1	8,200	190
200	45.5	199.0	5,400	48.3	196.7	6,100	50.8	191.1	6,800	200
210	42.5	188.3	4,200	45.2	185.9	4,900	47.5	179.8	5,500	210
220							44.1	167.2	4,300	220



# Liftcrane Jib Capacities

New York City Code  
Jib No. 134 With 12 Ft. 6 in. Strut On  
Boom No. 82LR  
149,600 Lb. Counterweight  
360 Degree Rating

Meets  
ANSI B30.5  
Requirements

## 999 SERIES 1

### 80 Ft. JIB

Jib Oper. Rad. Feet	5 Degree Offset			15 Degree Offset			25 Degree Offset			Jib Oper. Rad. Feet
	Boom Ang. Deg.	Jib Point Elev. Feet	Jib Capacity Pounds	Boom Ang. Deg.	Jib Point Elev. Feet	Jib Capacity Pounds	Boom Ang. Deg.	Jib Point Elev. Feet	Jib Capacity Pounds	
<b>200 Ft. BOOM</b>										
60	79.9	285.1	20,500 *							60
65	78.9	284.1	20,400 *							65
70	77.9	283.0	20,300 *	80.8	281.3	19,500*				70
75	76.8	281.8	20,200 *	79.7	280.1	19,200*				75
80	75.8	280.5	20,100 *	78.6	278.8	18,900*				80
85	74.7	279.0	20,000 *	77.6	277.4	18,600*	80.6	273.2	15,000*	85
90	73.7	277.5	19,900 *	76.5	275.9	18,400*	79.5	271.7	15,000*	90
100	71.5	274.2	19,700 *	74.4	272.5	17,800*	77.3	268.3	15,000*	100
110	69.3	270.5	19,200 *	72.2	268.7	17,300*	75.1	264.4	15,000*	110
120	67.1	266.3	18,600 *	70.0	264.5	16,800*	72.8	260.2	15,000*	120
130	64.9	261.6	17,800	67.7	259.8	16,400*	70.5	255.4	14,800*	130
140	62.6	256.5	15,000	65.4	254.6	15,900*	68.2	250.1	14,500*	140
150	60.3	250.8	12,700	63.1	248.9	14,000	65.8	244.3	13,900*	150
160	57.9	244.6	10,700	60.6	242.7	11,800	63.3	237.9	13,000	160
170	55.4	237.7	8,900	58.2	235.8	9,900	60.8	230.9	11,000	170
180	52.9	230.3	7,300	55.6	228.2	8,300	58.2	223.1	9,200	180
190	50.3	222.0	5,900	53.0	219.9	6,800	55.5	214.6	7,600	190
200	47.5	213.0	4,700	50.2	210.8	5,400	52.6	205.3	6,200	200
210				47.3	200.7	4,200	49.6	194.9	4,900	210
<b>210 Ft. BOOM</b>										
60	80.3	295.3	20,500 *							60
65	79.3	294.3	20,400 *							65
70	78.3	293.2	20,300 *							70
75	77.3	292.1	20,200 *	80.1	290.4	19,300*				75
80	76.3	290.8	20,100 *	79.0	289.1	19,000*				80
85	75.3	289.4	20,000 *	78.0	287.8	18,800*				85
90	74.2	288.0	19,900 *	77.0	286.3	18,500*	79.9	282.1	15,200*	90
100	72.2	284.8	19,800 *	74.9	283.1	18,000*	77.8	278.8	15,200*	100
110	70.1	281.2	19,400 *	72.8	279.4	17,500*	75.6	275.1	15,200*	110
120	68.0	277.2	18,800 *	70.7	275.4	17,000*	73.5	271.0	15,200*	120
130	65.8	272.7	17,200	68.5	270.9	16,500*	71.3	266.4	14,900*	130
140	63.6	267.8	14,500	66.3	265.9	16,000	69.0	261.4	14,600*	140
150	61.4	262.4	12,100	64.1	260.5	13,500	66.7	255.8	14,200*	150
160	59.1	256.4	10,100	61.8	254.5	11,300	64.4	249.7	12,500	160
170	56.8	249.9	8,300	59.4	248.0	9,400	62.0	243.1	10,500	170
180	54.4	242.8	6,800	57.0	240.8	7,800	59.5	235.8	8,800	180
190	51.9	235.1	5,400	54.5	233.0	6,300	57.0	227.7	7,200	190
200	49.3	226.6	4,100	51.9	224.4	4,900	54.3	219.0	5,700	200
210							51.5	209.3	4,400	210



# Liftcrane Jib Capacities

New York City Code  
Jib No. 134 With 12 Ft. 6 in. Strut On  
Boom No. 82LR  
149,600 Lb. Counterweight  
360 Degree Rating

Meets  
ANSI B30.5  
Requirements

## 999 SERIES 1

### 80 Ft. JIB

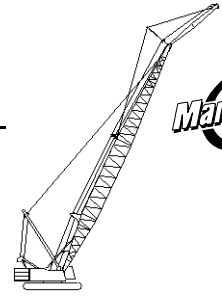
Jib Oper. Rad. Feet	5 Degree Offset			15 Degree Offset			25 Degree Offset			Jib Oper. Rad. Feet
	Boom Ang. Deg.	Jib Point Elev. Feet	Jib Capacity Pounds	Boom Ang. Deg.	Jib Point Elev. Feet	Jib Capacity Pounds	Boom Ang. Deg.	Jib Point Elev. Feet	Jib Capacity Pounds	
<b>220 Ft. BOOM</b>										
60	80.6	305.5	20,500 *							60
65	79.7	304.5	20,400 *							65
70	78.7	303.5	20,300 *							70
75	77.7	302.3	20,300 *	80.4	300.7	19,400*				75
80	76.7	301.1	20,200 *	79.4	299.4	19,100*				80
85	75.8	299.8	20,100 *	78.4	298.1	18,900*				85
90	74.8	298.4	20,000 *	77.4	296.7	18,600*	80.2	292.5	15,200*	90
100	72.8	295.3	19,800 *	75.5	293.6	18,100*	78.2	289.3	15,200*	100
110	70.8	291.9	19,600 *	73.4	290.1	17,600*	76.1	285.8	15,200*	110
120	68.7	288.0	19,100 *	71.4	286.2	17,100*	74.1	281.8	15,200*	120
130	66.7	283.7	16,700	69.3	281.9	16,700*	72.0	277.4	15,000*	130
140	64.6	279.0	13,900	67.2	277.1	15,500	69.8	272.6	14,700*	140
150	62.5	273.8	11,600	65.0	271.9	13,000	67.6	267.3	14,400*	150
160	60.3	268.1	9,500	62.9	266.2	10,800	65.4	261.4	12,100	160
170	58.0	261.9	7,800	60.6	260.0	8,900	63.1	255.1	10,100	170
180	55.8	255.2	6,200	58.3	253.2	7,300	60.7	248.1	8,300	180
190	53.4	247.8	4,800	55.9	245.7	5,800	58.3	240.6	6,700	190
200				53.5	237.6	4,400	55.8	232.3	5,300	200
210							53.2	223.2	4,000	210
<b>230 Ft. BOOM</b>										
60	80.9	315.6	20,600 *							60
65	80.0	314.7	20,500 *							65
70	79.1	313.7	20,400 *							70
75	78.1	312.6	20,300 *	80.7	310.9	19,500*				75
80	77.2	311.4	20,200 *	79.8	309.7	19,200*				80
85	76.2	310.2	20,100 *	78.8	308.4	19,000*				85
90	75.3	308.8	20,000 *	77.9	307.1	18,700*	80.6	302.8	15,200*	90
100	73.4	305.8	19,900 *	75.9	304.1	18,200*	78.6	299.8	15,200*	100
110	71.4	302.5	19,700 *	74.0	300.7	17,700*	76.6	296.3	15,200*	110
120	69.5	298.8	19,300 *	72.0	297.0	17,300*	74.6	292.5	15,200*	120
130	67.5	294.6	16,100	70.0	292.8	16,800*	72.6	288.3	15,100*	130
140	65.5	290.1	13,400	68.0	288.2	15,000	70.5	283.7	14,800*	140
150	63.4	285.1	11,000	65.9	283.2	12,500	68.4	278.6	14,000	150
160	61.3	279.7	9,000	63.8	277.8	10,300	66.3	273.0	11,700	160
170	59.2	273.7	7,200	61.7	271.8	8,400	64.1	266.9	9,700	170
180	57.0	267.3	5,600	59.5	265.3	6,800	61.9	260.3	7,900	180
190	54.8	260.3	4,200	57.2	258.2	5,300	59.6	253.1	6,300	190
200							57.2	245.3	4,800	200



# Liftcrane Jib Capacities

New York City Code  
 Jib No. 134 With 12 Ft. 6 in. Strut On  
 Boom No. 82LR  
 149,600 Lb. Counterweight  
 360 Degree Rating

Meets  
 ANSI B30.5  
 Requirements



## 999 SERIES 1

### 80 Ft. JIB

Jib Oper. Rad. Feet	5 Degree Offset			15 Degree Offset			25 Degree Offset			Jib Oper. Rad. Feet
	Boom Ang. Deg.	Jib Point Elev. Feet	Jib Capacity Pounds	Boom Ang. Deg.	Jib Point Elev. Feet	Jib Capacity Pounds	Boom Ang. Deg.	Jib Point Elev. Feet	Jib Capacity Pounds	
<b>240 Ft. BOOM</b>										
65	80.3	324.9	20,500 *							65
70	79.4	323.9	20,400 *							70
75	78.5	322.8	20,300 *							75
80	77.6	321.7	20,200 *	80.1	320.0	19,300*				80
85	76.7	320.5	20,200 *	79.2	318.8	19,100*				85
90	75.7	319.2	20,100 *	78.3	317.4	18,800*	80.9	313.1	15,100*	90
100	73.9	316.3	19,900 *	76.4	314.5	18,300*	79.0	310.2	15,100*	100
110	72.0	313.1	19,700 *	74.5	311.3	17,900*	77.1	306.9	15,100*	110
120	70.1	309.5	18,700	72.6	307.7	17,400*	75.1	303.2	15,100*	120
130	68.2	305.5	15,400	70.7	303.7	17,000*	73.2	299.1	15,100*	130
140	66.3	301.1	12,700	68.7	299.3	14,400	71.2	294.7	14,900*	140
150	64.3	296.3	10,300	66.7	294.5	11,900	69.2	289.8	13,500	150
160	62.3	291.1	8,300	64.7	289.2	9,700	67.1	284.4	11,100	160
170	60.3	285.4	6,500	62.7	283.5	7,800	65.0	278.6	9,100	170
180	58.2	279.3	4,900	60.6	277.3	6,100	62.9	272.3	7,300	180
190				58.4	270.5	4,600	60.7	265.4	5,700	190
200							58.4	258.0	4,200	200