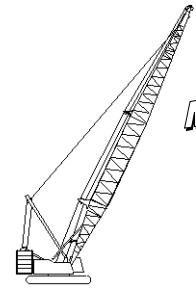




# Liftcrane Boom Capacities

Meets  
ANSI B30.5  
Requirements



## 999 SERIES 3

**Boom No. 82LR**  
**219,600 Lb. Crane Counterweight**  
**80,000 Lb. Carbody Counterweight**  
**360 Degree Rating**

**LIFTING CAPACITIES:** Lifting capacities for various boom lengths and operating radii are for freely suspended loads and do not exceed 75% of a static tipping load. Capacities based on structural competence are denoted by an asterisk (\*).

Upper boom point capacity for liftcrane service with single part whip line is 29,500 Lbs. When boom butt mounted auxiliary drum is used, capacity with single part whip line is 20,000 Lbs. In all cases, upper boom point capacities cannot exceed those listed for main boom capacity.

Weight of jib, all load blocks, hooks, weight ball, slings, hoist lines, etc., beneath boom and jib point sheaves, is considered part of main boom load. Boom is not to be lowered beyond radii where combined weights are greater than rated capacity. Where no capacity is shown, operation is not intended or approved.

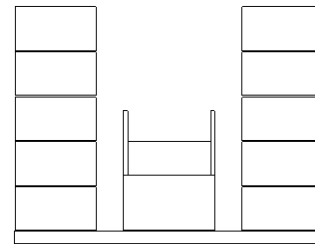
**OPERATING CONDITIONS:** Machine to operate in a level position on a firm uniformly supporting surface with gantry up. Refer to boom rigging **No. 196100** and Wire Rope Specification chart **No. 8315-A**. Crane operator judgment must be used to allow for dynamic load effects of swinging, hoisting or lowering, travel, wind conditions, as well as adverse operating conditions and physical machine depreciation. Refer to operators manual for operating guidelines.

**MACHINE TRAVEL:** Machine to travel on a firm, level and uniformly supporting surface and boom within boom angle range shown in capacity chart. Refer to Maximum Allowable Travel Specification chart **No. 8316-A**.

**OPERATING RADIUS:** Operating radius is horizontal distance from axis of rotation to center of vertical hoist line or load block. Boom angle is angle between horizontal and centerline of boom butt and inserts, and is an indication of operating radius. In all cases, operating radius shall govern capacity.

**BOOM POINT ELEVATION:** Boom point elevation is vertical distance from ground level to centerline of boom point shaft.

**MACHINE EQUIPMENT:** Machine equipped with 28 Ft. 2 in. crawlers, 48 in. treads, 10 Ft. 3 in. retractable gantry, 30 Ft. live mast, 20 part boom hoist reeving, boom support straps, 219,600 Lb. crane counterweight, two 22,000 Lb. and two 18,000 Lb. carbody counterweights.



219,600 Lb. Crane Counterweight  
10 Side Boxes - 1 Center Box

Maximum Boom and Jib Lengths Lifted Unassisted					
Over End of Blocked Crawlers			Over Side of Crawlers		
Boom Length	Jib No. 134	Jib No. 123	Boom Length	Jib No. 134	Jib No. 123
(a) 340 Ft.	—	—	320 Ft.	—	—
330 Ft.	—	—	310 Ft.	—	—
320 Ft.	—	—	300 Ft.	30 Ft.	(b) 50 Ft.
310 Ft.	—	—	290 Ft.	(b) 60 Ft.	60 Ft.
300 Ft.	80 Ft.	60 Ft.	280 Ft.	80 Ft.	60 Ft.

Load block, hook and weight ball on ground at start.

(a) Upper boom point cannot be used on 340 Ft. boom.

(b) When equipped with boom catwalks, this combination of boom and jib length cannot be raised.

Deduct From Capacities When Jib Is Attached		
Jib Length	Jib No. 134	Jib No. 123
30 Ft.	2,700 Lbs.	2,500 Lbs.
40 Ft.	3,500 Lbs.	3,100 Lbs.
50 Ft.	4,300 Lbs.	3,700 Lbs.
60 Ft.	5,100 Lbs.	4,400 Lbs.
70 Ft.	6,100 Lbs.	—
80 Ft.	7,100 Lbs.	—

Boom Catwalks Deduct
Deduct 700 Lbs. from capacities when boom catwalks are attached.

Consult jib chart for jib capacities.

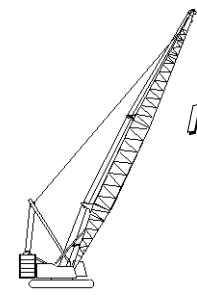
Upper boom point cannot be used when jib is attached.



# Liftcrane Boom Capacities

Meets  
**ANSI B30.5**  
Requirements

**Boom No. 82LR**  
**219,600 Lb. Crane Counterweight**  
**80,000 Lb. Carbody Counterweight**  
**360 Degree Rating**



## 999 SERIES 3

Oper. Rad. Feet	Boom Ang. Deg.	Boom Point Elev. Feet	Boom Capacity Pounds
<b>120 Ft. Boom</b>			
24	80.9	126.6	265,500 *
26	79.9	126.3	265,500 *
28	78.9	125.9	252,400 *
30	78.0	125.5	240,300 *
32	77.0	125.1	229,200 *
34	76.0	124.6	219,100 *
36	75.0	124.1	209,800 *
38	74.0	123.5	201,300 *
40	73.0	122.9	192,000 *
42	72.0	122.3	182,300
44	71.0	121.6	170,900
46	70.0	120.9	160,800
48	69.0	120.2	151,800
50	68.0	119.4	143,700
55	65.4	117.2	126,600
60	62.7	114.8	112,900
65	60.0	112.1	101,600
70	57.2	109.0	92,300
75	54.3	105.6	84,300
80	51.3	101.8	77,500
85	48.2	97.6	71,600
90	44.9	92.9	66,500
95	41.4	87.5	61,900
100	37.7	81.5	57,800
105	33.6	74.5	54,200
110	29.0	66.2	50,900
115	23.6	56.1	47,200 *
120	16.6	42.4	41,700 *
<b>130 Ft. Boom</b>			
26	80.7	136.4	265,500 *
28	79.8	136.1	263,400 *
30	78.9	135.7	251,300 *
32	78.0	135.3	240,300 *
34	77.1	134.9	230,100 *
36	76.2	134.4	220,800 *
38	75.3	133.9	209,700
40	74.4	133.4	195,100
42	73.5	132.8	182,200
44	72.5	132.2	170,900
46	71.6	131.5	160,800
48	70.7	130.8	151,800
50	69.7	130.1	143,600
55	67.4	128.2	126,500
60	65.0	125.9	112,800
65	62.5	123.5	101,500
70	60.0	120.7	92,200
75	57.4	117.7	84,200
80	54.8	114.3	77,400
85	52.0	110.6	71,500

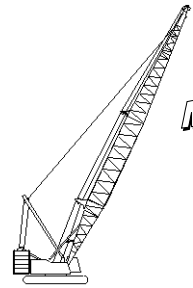
Oper. Rad. Feet	Boom Ang. Deg.	Boom Point Elev. Feet	Boom Capacity Pounds
<b>130 Ft. Boom</b>			
90	49.2	106.5	66,400
95	46.2	102.0	61,800
100	43.0	96.9	57,700
105	39.7	91.2	54,100
110	36.1	84.8	50,800
115	32.2	77.4	47,800
120	27.8	68.8	45,100
125	22.6	58.2	41,800 *
130	15.9	43.9	37,200 *
<b>140 Ft. Boom</b>			
28	80.5	146.3	265,500 *
30	79.7	145.9	260,700 *
32	78.9	145.5	249,800 *
34	78.0	145.1	238,900 *
36	77.2	144.7	225,700 *
38	76.4	144.2	209,700
40	75.5	143.7	195,000
42	74.7	143.2	182,100
44	73.8	142.6	170,800
46	73.0	142.0	160,700
48	72.1	141.4	151,600
50	71.3	140.7	143,500
55	69.1	138.9	126,300
60	66.9	136.9	112,600
65	64.6	134.6	101,400
70	62.3	132.1	92,000
75	60.0	129.4	84,000
80	57.6	126.4	77,200
85	55.2	123.0	71,300
90	52.6	119.4	66,200
95	50.0	115.4	61,600
100	47.3	111.0	57,500
105	44.4	106.1	53,900
110	41.4	100.8	50,600
115	38.2	94.8	47,700
120	34.8	88.0	44,900
125	31.0	80.3	42,500
130	26.8	71.2	40,200
135	21.8	60.1	37,000 *
140	15.4	45.2	33,000 *

Oper. Rad. Feet	Boom Ang. Deg.	Boom Point Elev. Feet	Boom Capacity Pounds
<b>150 Ft. Boom</b>			
30	80.4	156.1	265,500 *
32	79.6	155.7	253,300 *
34	78.9	155.3	238,600 *
36	78.1	154.9	225,400 *
38	77.3	154.5	209,600
40	76.5	154.0	194,800
42	75.7	153.5	182,000
44	74.9	153.0	170,600
46	74.1	152.4	160,500
48	73.3	151.9	151,500
50	72.5	151.2	143,300
55	70.5	149.6	126,200
60	68.5	147.7	112,400
65	66.4	145.6	101,200
70	64.3	143.3	91,800
75	62.2	140.8	83,800
80	60.0	138.1	77,000
85	57.8	135.0	71,100
90	55.5	131.7	66,000
95	53.1	128.2	61,400
100	50.7	124.2	57,300
105	48.2	120.0	53,700
110	45.6	115.3	50,400
115	42.8	110.1	47,500
120	39.9	104.5	44,800
125	36.9	98.2	42,300
130	33.6	91.1	40,000
135	29.9	83.0	37,900
140	25.8	73.5	36,000
145	21.0	62.0	32,900 *



# Liftcrane Boom Capacities

Meets  
ANSI B30.5  
Requirements



**Boom No. 82LR**  
**219,600 Lb. Crane Counterweight**  
**80,000 Lb. Carbody Counterweight**  
**360 Degree Rating**

## 999 SERIES 3

Oper. Rad. Feet	Boom Ang. Deg.	Boom Point Elev. Feet	Boom Capacity Pounds
<b>160 Ft. Boom</b>			
30	81.0	166.2	236,000 *
32	80.3	165.9	236,000 *
34	79.6	165.5	234,800 *
36	78.8	165.1	224,700 *
38	78.1	164.7	209,300
40	77.4	164.3	194,500
42	76.6	163.8	181,600
44	75.9	163.3	170,300
46	75.2	162.8	160,200
48	74.4	162.3	151,100
50	73.7	161.7	143,000
55	71.8	160.1	125,800
60	69.9	158.4	112,000
65	68.0	156.5	100,700
70	66.0	154.4	91,300
75	64.1	152.0	83,400
80	62.0	149.5	76,600
85	60.0	146.7	70,700
90	57.9	143.7	65,500
95	55.8	140.4	60,900
100	53.6	136.9	56,900
105	51.3	133.1	53,200
110	49.0	128.9	49,900
115	46.6	124.3	47,000
120	44.0	119.4	44,300
125	41.4	114.0	41,800
130	38.6	108.0	39,500
135	35.7	101.4	37,400
140	32.5	94.0	35,500
145	29.0	85.6	33,700
150	25.0	75.8	31,800 *
155	20.4	63.8	28,900 *
<b>170 Ft. Boom</b>			
32	80.9	176.0	228,400 *
34	80.2	175.7	224,900 *
36	79.5	175.3	221,500 *
38	78.8	174.9	209,100
40	78.1	174.5	194,300
42	77.4	174.1	181,400
44	76.7	173.6	170,000
46	76.0	173.1	159,900
48	75.3	172.6	150,900
50	74.7	172.1	142,700
55	72.9	170.6	125,500
60	71.1	169.0	111,700
65	69.3	167.2	100,500
70	67.5	165.2	91,100
75	65.7	163.1	83,100
80	63.8	160.7	76,300
85	61.9	158.2	70,400
90	60.0	155.4	65,200

Oper. Rad. Feet	Boom Ang. Deg.	Boom Point Elev. Feet	Boom Capacity Pounds
<b>170 Ft. Boom</b>			
95	58.0	152.4	60,600
100	56.0	149.1	56,600
105	54.0	145.6	52,900
110	51.9	141.8	49,700
115	49.7	137.8	46,700
120	47.4	133.4	44,000
125	45.1	128.6	41,500
130	42.7	123.4	39,300
135	40.1	117.7	37,200
140	37.4	111.5	35,200
145	34.6	104.6	33,400
150	31.5	96.9	31,800
155	28.1	88.2	30,200
160	24.2	78.0	28,100 *
165	19.7	65.6	25,500 *
<b>180 Ft. Boom</b>			
34	80.7	185.8	206,400 *
36	80.1	185.5	205,500 *
38	79.4	185.1	202,600 *
40	78.8	184.7	194,100
42	78.1	184.3	181,200
44	77.5	183.9	169,800
46	76.8	183.4	159,700
48	76.2	182.9	150,600
50	75.5	182.4	142,500
55	73.9	181.1	125,200
60	72.2	179.5	111,500
65	70.5	177.9	100,200
70	68.8	176.0	90,800
75	67.1	174.0	82,800
80	65.4	171.8	76,000
85	63.6	169.4	70,100
90	61.8	166.8	64,900
95	60.0	164.0	60,300
100	58.1	161.0	56,300
105	56.3	157.8	52,600
110	54.3	154.4	49,400
115	52.3	150.6	46,400
120	50.3	146.6	43,700
125	48.2	142.3	41,200
130	46.0	137.7	39,000
135	43.8	132.7	36,900
140	41.4	127.2	34,900
145	38.9	121.3	33,200
150	36.3	114.8	31,500
155	33.6	107.7	29,900
160	30.6	99.7	28,500
165	27.3	90.6	27,100
170	23.6	80.1	24,900 *
175	19.2	67.3	22,500 *

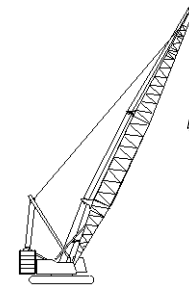
Oper. Rad. Feet	Boom Ang. Deg.	Boom Point Elev. Feet	Boom Capacity Pounds
<b>190 Ft. Boom</b>			
36	80.6	195.6	196,000 *
38	80.0	195.3	193,200 *
40	79.4	194.9	188,300 *
42	78.8	194.5	181,000
44	78.2	194.1	169,600
46	77.5	193.7	159,500
48	76.9	193.2	150,400
50	76.3	192.7	142,200
55	74.7	191.5	125,000
60	73.2	190.0	111,200
65	71.6	188.4	99,900
70	70.0	186.7	90,500
75	68.4	184.8	82,500
80	66.8	182.7	75,700
85	65.1	180.5	69,800
90	63.4	178.1	64,600
95	61.7	175.5	60,000
100	60.0	172.7	56,000
105	58.2	169.7	52,300
110	56.5	166.5	49,100
115	54.6	163.1	46,100
120	52.8	159.4	43,400
125	50.8	155.5	40,900
130	48.9	151.2	38,700
135	46.8	146.7	36,600
140	44.7	141.8	34,600
145	42.5	136.6	32,900
150	40.3	130.9	31,200
155	37.9	124.8	29,700
160	35.3	118.0	28,200
165	32.6	110.6	26,800
170	29.7	102.4	25,600
175	26.5	93.0	24,200 *
180	22.9	82.1	22,100 *
185	18.7	69.0	20,000 *



# Liftcrane Boom Capacities

Meets  
ANSI B30.5  
Requirements

**Boom No. 82LR**  
**219,600 Lb. Crane Counterweight**  
**80,000 Lb. Carbody Counterweight**  
**360 Degree Rating**



## 999 SERIES 3

Oper. Rad. Feet	Boom Ang. Deg.	Boom Point Elev. Feet	Boom Capacity Pounds
<b>200 Ft. Boom</b>			
38	80.5	205.4	177,000 *
40	79.9	205.1	175,400 *
42	79.3	204.7	173,100 *
44	78.8	204.3	169,300
46	78.2	203.9	159,100
48	77.6	203.5	150,000
50	77.0	203.0	141,900
55	75.5	201.8	124,600
60	74.0	200.4	110,800
65	72.5	198.9	99,500
70	71.0	197.3	90,000
75	69.5	195.5	82,100
80	68.0	193.6	75,200
85	66.4	191.5	69,300
90	64.8	189.2	64,100
95	63.3	186.8	59,500
100	61.6	184.1	55,500
105	60.0	181.4	51,800
110	58.3	178.4	48,500
115	56.6	175.2	45,600
120	54.9	171.8	42,900
125	53.1	168.2	40,400
130	51.3	164.3	38,100
135	49.5	160.1	36,000
140	47.5	155.7	34,100
145	45.6	151.0	32,300
150	43.5	145.9	30,700
155	41.4	140.4	29,100
160	39.2	134.5	27,700
165	36.9	128.2	26,300
170	34.4	121.2	25,000
175	31.8	113.5	23,800
180	29.0	105.0	22,700
185	25.8	95.3	21,000 *
190	22.3	84.1	19,100 *
195	18.2	70.6	17,200 *

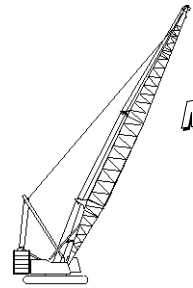
Oper. Rad. Feet	Boom Ang. Deg.	Boom Point Elev. Feet	Boom Capacity Pounds
<b>210 Ft. Boom</b>			
38	81.0	215.5	168,600 *
40	80.4	215.2	166,400 *
42	79.9	214.9	164,200 *
44	79.3	214.5	162,100 *
46	78.7	214.1	158,800
48	78.2	213.7	149,700
50	77.6	213.3	141,500
55	76.2	212.1	124,300
60	74.8	210.8	110,400
65	73.4	209.4	99,100
70	72.0	207.8	89,700
75	70.5	206.1	81,700
80	69.1	204.3	74,900
85	67.6	202.3	69,000
90	66.1	200.2	63,800
95	64.6	197.9	59,200
100	63.1	195.4	55,100
105	61.6	192.8	51,500
110	60.0	190.0	48,200
115	58.4	187.0	45,200
120	56.8	183.9	42,500
125	55.2	180.5	40,000
130	53.5	176.9	37,800
135	51.8	173.1	35,700
140	50.0	169.0	33,800
145	48.2	164.7	32,000
150	46.3	160.1	30,300
155	44.4	155.1	28,800
160	42.4	149.8	27,300
165	40.4	144.2	26,000
170	38.2	138.1	24,700
175	36.0	131.4	23,500
180	33.6	124.2	22,400
185	31.0	116.3	21,300
190	28.2	107.5	20,000 *
195	25.2	97.6	18,300 *
200	21.8	86.1	16,600 *
205	17.8	72.2	14,800 *

Oper. Rad. Feet	Boom Ang. Deg.	Boom Point Elev. Feet	Boom Capacity Pounds
<b>220 Ft. Boom</b>			
40	80.8	225.4	152,500 *
42	80.3	225.0	151,900 *
44	79.8	224.7	151,300 *
46	79.3	224.3	150,700 *
48	78.7	223.9	149,400
50	78.2	223.5	141,200
55	76.9	222.4	123,900
60	75.5	221.2	110,100
65	74.2	219.8	98,800
70	72.8	218.3	89,400
75	71.4	216.7	81,400
80	70.1	215.0	74,500
85	68.7	213.1	68,600
90	67.3	211.1	63,400
95	65.9	208.9	58,800
100	64.4	206.6	54,700
105	63.0	204.1	51,100
110	61.5	201.5	47,800
115	60.0	198.7	44,800
120	58.5	195.7	42,100
125	56.9	192.5	39,700
130	55.4	189.2	37,400
135	53.8	185.6	35,300
140	52.1	181.9	33,400
145	50.5	177.9	31,600
150	48.8	173.6	29,900
155	47.0	169.1	28,400
160	45.2	164.3	26,900
165	43.3	159.1	25,600
170	41.4	153.7	24,300
175	39.4	147.8	23,100
180	37.3	141.5	22,000
185	35.1	134.6	20,900
190	32.8	127.2	19,900
195	30.3	119.1	18,900 *
200	27.6	110.0	17,300 *
205	24.6	99.8	15,800 *
210	21.3	88.0	14,200 *
215	17.3	73.7	12,600 *



# Liftcrane Boom Capacities

Meets  
**ANSI B30.5**  
 Requirements



**Boom No. 82LR**  
**219,600 Lb. Crane Counterweight**  
**80,000 Lb. Carbody Counterweight**  
**360 Degree Rating**

## 999 SERIES 3

Oper. Rad. Feet	Boom Ang. Deg.	Boom Point Elev. Feet	Boom Capacity Pounds
<b>230 Ft. Boom</b>			
42	80.7	235.2	137,900 *
44	80.2	234.8	137,400 *
46	79.7	234.5	136,800 *
48	79.2	234.1	136,300 *
50	78.7	233.7	135,700 *
55	77.4	232.7	123,600
60	76.2	231.5	109,800
65	74.9	230.2	98,400
70	73.6	228.8	89,000
75	72.3	227.2	81,000
80	71.0	225.6	74,200
85	69.6	223.8	68,200
90	68.3	221.9	63,000
95	67.0	219.8	58,400
100	65.6	217.6	54,400
105	64.2	215.3	50,700
110	62.8	212.8	47,400
115	61.4	210.1	44,500
120	60.0	207.3	41,800
125	58.6	204.4	39,300
130	57.1	201.2	37,000
135	55.6	197.9	34,900
140	54.1	194.4	33,000
145	52.5	190.6	31,200
150	50.9	186.7	29,600
155	49.3	182.5	28,000
160	47.6	178.1	26,600
165	45.9	173.4	25,200
170	44.2	168.4	24,000
175	42.3	163.1	22,800
180	40.5	157.4	21,600
185	38.5	151.3	20,600
190	36.5	144.8	19,600
195	34.3	137.8	18,600
200	32.0	130.1	17,700
205	29.6	121.7	16,300 *
210	27.0	112.4	14,900 *
215	24.1	102.0	13,500 *
220	20.8	89.9	12,100 *
225	17.0	75.2	10,600 *

Oper. Rad. Feet	Boom Ang. Deg.	Boom Point Elev. Feet	Boom Capacity Pounds
<b>240 Ft. Boom</b>			
44	80.6	245.0	125,200 *
46	80.2	244.6	124,600 *
48	79.7	244.3	124,100 *
50	79.2	243.9	123,600 *
55	78.0	242.9	122,300 *
60	76.8	241.8	109,300
65	75.5	240.5	98,000
70	74.3	239.2	88,500
75	73.0	237.7	80,500
80	71.8	236.1	73,700
85	70.5	234.4	67,700
90	69.3	232.6	62,500
95	68.0	230.6	57,900
100	66.7	228.5	53,900
105	65.4	226.3	50,200
110	64.1	224.0	46,900
115	62.7	221.5	43,900
120	61.4	218.8	41,200
125	60.0	216.0	38,700
130	58.6	213.0	36,500
135	57.2	209.9	34,400
140	55.8	206.6	32,500
145	54.3	203.1	30,700
150	52.8	199.4	29,000
155	51.3	195.5	27,500
160	49.8	191.4	26,000
165	48.2	187.0	24,700
170	46.6	182.4	23,400
175	44.9	177.6	22,200
180	43.2	172.4	21,100
185	41.4	166.9	20,000
190	39.6	161.0	19,000
195	37.7	154.8	18,100
200	35.7	148.1	17,200
205	33.6	140.8	16,300
210	31.3	133.0	15,000 *
215	29.0	124.3	13,700 *
220	26.4	114.8	12,400 *
225	23.6	104.1	11,100 *
230	20.4	91.7	9,800 *
235	16.6	76.7	8,400 *

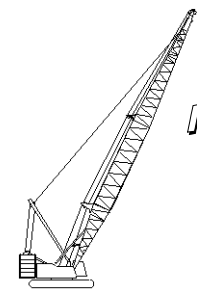
Oper. Rad. Feet	Boom Ang. Deg.	Boom Point Elev. Feet	Boom Capacity Pounds
<b>250 Ft. Boom</b>			
44	81.0	255.1	113,800 *
46	80.6	254.8	113,300 *
48	80.1	254.4	112,900 *
50	79.6	254.1	112,400 *
55	78.5	253.1	111,200 *
60	77.3	252.0	109,000
65	76.1	250.8	97,600
70	74.9	249.6	88,200
75	73.7	248.2	80,200
80	72.5	246.6	73,300
85	71.3	245.0	67,300
90	70.1	243.3	62,100
95	68.9	241.4	57,500
100	67.7	239.4	53,500
105	66.4	237.3	49,800
110	65.2	235.0	46,500
115	63.9	232.7	43,500
120	62.6	230.1	40,800
125	61.3	227.5	38,300
130	60.0	224.7	36,100
135	58.7	221.7	34,000
140	57.3	218.6	32,100
145	55.9	215.3	30,300
150	54.5	211.8	28,600
155	53.1	208.2	27,100
160	51.7	204.3	25,600
165	50.2	200.2	24,300
170	48.7	196.0	23,000
175	47.2	191.5	21,800
180	45.6	186.7	20,700
185	43.9	181.6	19,600
190	42.3	176.3	18,600
195	40.5	170.6	17,700
200	38.7	164.6	16,800
205	36.9	158.2	15,900
210	34.9	151.2	15,100
215	32.9	143.8	13,900 *
220	30.7	135.7	12,700 *
225	28.4	126.9	11,500 *
230	25.8	117.1	10,300 *
235	23.1	106.1	9,100 *
240	19.9	93.4	7,900 *
245	16.3	78.2	6,600 *



# Liftcrane Boom Capacities

Meets  
**ANSI B30.5**  
Requirements

**Boom No. 82LR**  
**219,600 Lb. Crane Counterweight**  
**80,000 Lb. Carbody Counterweight**  
**360 Degree Rating**



## 999 SERIES 3

Oper. Rad. Feet	Boom Ang. Deg.	Boom Point Elev. Feet	Boom Capacity Pounds
<b>260 Ft. Boom</b>			
46	80.9	264.9	103,700 *
48	80.5	264.6	103,300 *
50	80.0	264.2	102,800 *
55	78.9	263.3	101,700 *
60	77.8	262.3	100,600 *
65	76.7	261.1	97,200
70	75.5	259.9	87,800
75	74.4	258.6	79,800
80	73.2	257.1	72,900
85	72.1	255.5	66,900
90	70.9	253.9	61,700
95	69.7	252.1	57,100
100	68.6	250.2	53,100
105	67.4	248.2	49,400
110	66.2	246.0	46,100
115	65.0	243.7	43,100
120	63.7	241.3	40,400
125	62.5	238.8	37,900
130	61.3	236.1	35,700
135	60.0	233.3	33,600
140	58.7	230.4	31,600
145	57.4	227.2	29,900
150	56.1	224.0	28,200
155	54.8	220.5	26,600
160	53.4	216.9	25,200
165	52.0	213.1	23,900
170	50.6	209.1	22,600
175	49.2	204.9	21,400
180	47.7	200.4	20,300
185	46.2	195.8	19,200
190	44.6	190.8	18,200
195	43.0	185.6	17,300
200	41.4	180.1	16,400
205	39.7	174.3	15,500
210	38.0	168.1	14,700
215	36.1	161.4	13,900
220	34.2	154.4	12,800 *
225	32.2	146.7	11,600 *
230	30.1	138.4	10,500 *
235	27.8	129.4	9,400 *
240	25.3	119.4	8,300 *
245	22.6	108.2	7,100 *
250	19.6	95.2	6,000 *
255	15.9	79.6	4,800 *

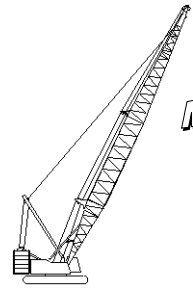
Oper. Rad. Feet	Boom Ang. Deg.	Boom Point Elev. Feet	Boom Capacity Pounds
<b>270 Ft. Boom</b>			
48	80.8	274.7	94,900 *
50	80.4	274.4	94,400 *
55	79.3	273.5	93,400 *
60	78.2	272.5	92,300 *
65	77.2	271.4	91,300 *
70	76.1	270.2	87,400
75	75.0	268.9	79,400
80	73.9	267.5	72,500
85	72.8	266.0	66,600
90	71.7	264.4	61,300
95	70.5	262.7	56,700
100	69.4	260.9	52,600
105	68.3	259.0	49,000
110	67.1	256.9	45,700
115	66.0	254.7	42,700
120	64.8	252.4	40,000
125	63.6	250.0	37,500
130	62.4	247.5	35,300
135	61.2	244.8	33,200
140	60.0	242.0	31,200
145	58.8	239.0	29,400
150	57.5	235.9	27,800
155	56.3	232.7	26,200
160	55.0	229.2	24,800
165	53.7	225.6	23,400
170	52.3	221.9	22,200
175	51.0	217.9	21,000
180	49.6	213.8	19,900
185	48.2	209.4	18,800
190	46.7	204.8	17,800
195	45.3	200.0	16,800
200	43.8	194.9	15,900
205	42.2	189.5	15,100
210	40.6	183.9	14,300
215	38.9	177.9	13,500
220	37.2	171.5	12,800
225	35.4	164.7	11,600 *
230	33.6	157.4	10,500 *
235	31.6	149.6	9,500 *
240	29.5	141.1	8,400 *
245	27.3	131.8	7,400 *
250	24.9	121.6	6,400 *
255	22.2	110.1	5,300 *
260	19.2	96.9	4,300 *

Oper. Rad. Feet	Boom Ang. Deg.	Boom Point Elev. Feet	Boom Capacity Pounds
<b>280 Ft. Boom</b>			
50	80.8	284.5	85,600 *
55	79.7	283.7	84,700 *
60	78.7	282.7	83,700 *
65	77.6	281.6	82,800 *
70	76.6	280.5	81,800 *
75	75.5	279.3	78,900
80	74.5	277.9	72,000
85	73.4	276.5	66,100
90	72.3	274.9	60,800
95	71.3	273.3	56,200
100	70.2	271.5	52,100
105	69.1	269.7	48,500
110	68.0	267.7	45,200
115	66.9	265.6	42,200
120	65.8	263.4	39,500
125	64.6	261.1	37,000
130	63.5	258.7	34,700
135	62.3	256.1	32,600
140	61.2	253.5	30,700
145	60.0	250.6	28,900
150	58.8	247.7	27,200
155	57.6	244.6	25,700
160	56.4	241.3	24,200
165	55.2	237.9	22,900
170	53.9	234.4	21,600
175	52.6	230.6	20,400
180	51.3	226.7	19,300
185	50.0	222.6	18,200
190	48.6	218.3	17,200
195	47.3	213.8	16,300
200	45.9	209.1	15,400
205	44.4	204.1	14,500
210	42.9	198.9	13,700
215	41.4	193.4	13,000
220	39.8	187.5	12,200
225	38.2	181.4	11,400 *
230	36.5	174.8	10,300 *
235	34.8	167.8	9,300 *
240	32.9	160.4	8,200 *
245	31.0	152.4	7,200 *
250	29.0	143.7	6,300 *
255	26.8	134.2	5,300 *
260	24.4	123.8	4,400 *



# Liftcrane Boom Capacities

Meets  
**ANSI B30.5**  
 Requirements



**Boom No. 82LR**  
**219,600 Lb. Crane Counterweight**  
**80,000 Lb. Carbody Counterweight**  
**360 Degree Rating**

## 999 SERIES 3

Oper. Rad. Feet	Boom Ang. Deg.	Boom Point Elev. Feet	Boom Capacity Pounds
<b>290 Ft. Boom</b>			
55	80.1	293.8	77,900 *
60	79.1	292.9	77,000 *
65	78.1	291.9	76,100 *
70	77.0	290.8	75,100 *
75	76.0	289.6	74,200 *
80	75.0	288.3	71,600
85	74.0	286.9	65,600
90	73.0	285.4	60,400
95	71.9	283.8	55,800
100	70.9	282.2	51,700
105	69.8	280.4	48,000
110	68.8	278.5	44,700
115	67.7	276.5	41,800
120	66.6	274.4	39,000
125	65.6	272.2	36,600
130	64.5	269.8	34,300
135	63.4	267.4	32,200
140	62.3	264.8	30,300
145	61.1	262.1	28,500
150	60.0	259.3	26,800
155	58.9	256.3	25,300
160	57.7	253.3	23,800
165	56.5	250.0	22,500
170	55.3	246.6	21,200
175	54.1	243.1	20,000
180	52.9	239.4	18,900
185	51.6	235.5	17,800
190	50.4	231.5	16,800
195	49.1	227.2	15,900
200	47.7	222.8	15,000
205	46.4	218.2	14,100
210	45.0	213.3	13,300
215	43.6	208.2	12,500
220	42.2	202.8	11,800
225	40.7	197.1	11,100
230	39.1	191.1	10,200 *
235	37.5	184.8	9,100 *
240	35.9	178.1	8,200 *
245	34.1	170.9	7,200 *
250	32.3	163.3	6,300 *
255	30.5	155.1	5,300 *
260	28.4	146.3	4,400 *

Oper. Rad. Feet	Boom Ang. Deg.	Boom Point Elev. Feet	Boom Capacity Pounds
<b>300 Ft. Boom</b>			
55	80.4	304.0	71,600 *
60	79.4	303.1	70,700 *
65	78.5	302.1	69,800 *
70	77.5	301.0	68,900 *
75	76.5	299.9	68,100 *
80	75.5	298.6	67,200 *
85	74.5	297.3	65,200
90	73.5	295.9	60,000
95	72.5	294.3	55,400
100	71.5	292.7	51,300
105	70.5	291.0	47,600
110	69.5	289.2	44,300
115	68.5	287.3	41,300
120	67.5	285.2	38,600
125	66.4	283.1	36,100
130	65.4	280.9	33,800
135	64.3	278.5	31,800
140	63.3	276.1	29,800
145	62.2	273.5	28,000
150	61.1	270.8	26,400
155	60.0	268.0	24,800
160	58.9	265.0	23,400
165	57.8	261.9	22,000
170	56.6	258.7	20,700
175	55.5	255.3	19,600
180	54.3	251.8	18,400
185	53.1	248.2	17,400
190	51.9	244.3	16,400
195	50.7	240.3	15,400
200	49.5	236.1	14,500
205	48.2	231.8	13,700
210	46.9	227.2	12,900
215	45.6	222.4	12,100
220	44.2	217.4	11,300
225	42.8	212.1	10,600
230	41.4	206.6	10,000
235	39.9	200.8	9,000 *
240	38.4	194.6	8,000 *
245	36.9	188.2	7,000 *
250	35.2	181.3	6,100 *
255	33.6	174.0	5,200 *
260	31.8	166.2	4,400 *

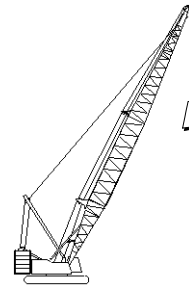
Oper. Rad. Feet	Boom Ang. Deg.	Boom Point Elev. Feet	Boom Capacity Pounds
<b>310 Ft. Boom</b>			
55	80.7	314.1	70,500 *
60	79.8	313.2	69,700 *
65	78.8	312.3	69,000 *
70	77.9	311.3	68,000 *
75	76.9	310.1	62,900 *
80	76.0	308.9	60,200 *
85	75.0	307.7	57,700 *
90	74.1	306.3	55,500 *
95	73.1	304.8	53,400 *
100	72.2	303.2	51,300
105	71.2	301.6	47,600
110	70.2	299.8	44,300
115	69.2	298.0	41,300
120	68.2	296.0	38,600
125	67.2	294.0	36,100
130	66.2	291.8	33,800
135	65.2	289.6	31,700
140	64.2	287.2	29,800
145	63.2	284.7	28,000
150	62.1	282.2	26,300
155	61.1	279.4	24,800
160	60.0	276.6	23,300
165	58.9	273.7	22,000
170	57.8	270.6	20,700
175	56.7	267.4	19,500
180	55.6	264.0	18,400
185	54.5	260.5	17,300
190	53.4	256.9	16,300
195	52.2	253.1	15,400
200	51.0	249.1	14,500
205	49.8	245.0	13,600
210	48.6	240.7	12,800
215	47.4	236.2	12,000
220	46.1	231.5	11,300
225	44.8	226.6	10,600
230	43.5	221.4	9,900
235	42.1	216.0	9,300
240	40.7	210.3	8,700 *
245	39.3	204.4	7,700 *
250	37.8	198.1	6,800 *
255	36.2	191.5	5,900 *
260	34.7	184.4	5,000 *
265	33.0	177.0	4,200 *



# Liftcrane Boom Capacities

**Boom No. 82LR**  
**219,600 Lb. Crane Counterweight**  
**80,000 Lb. Carbody Counterweight**  
**360 Degree Rating**

**Meets  
ANSI B30.5  
Requirements**



## 999 SERIES 3

Oper. Rad. Feet	Boom Ang. Deg.	Boom Point Elev. Feet	Boom Capacity Pounds
<b>320 Ft. Boom</b>			
55	81.0	324.2	65,300 *
60	80.1	323.4	64,600 *
65	79.2	322.5	63,800 *
70	78.3	321.5	63,100 *
75	77.4	320.4	60,600 *
80	76.4	319.2	57,900 *
85	75.5	318.0	55,500 *
90	74.6	316.7	53,300 *
95	73.7	315.2	51,300 *
100	72.7	313.7	49,500 *
105	71.8	312.1	47,100
110	70.8	310.4	43,800
115	69.9	308.7	40,800
120	68.9	306.8	38,100
125	68.0	304.8	35,600
130	67.0	302.7	33,300
135	66.0	300.6	31,200
140	65.0	298.3	29,300
145	64.1	295.9	27,500
150	63.1	293.4	25,800
155	62.0	290.8	24,200
160	61.0	288.1	22,800
165	60.0	285.3	21,400
170	59.0	282.3	20,200
175	57.9	279.3	19,000
180	56.8	276.1	17,800
185	55.8	272.7	16,800
190	54.7	269.3	15,800
195	53.6	265.6	14,800
200	52.5	261.9	13,900
205	51.3	258.0	13,100
210	50.2	253.9	12,300
215	49.0	249.6	11,500
220	47.8	245.2	10,700
225	46.6	240.5	10,000
230	45.3	235.7	9,400
235	44.0	230.6	8,700
240	42.7	225.4	8,100
245	41.4	219.8	7,300 *
250	40.0	214.0	6,400 *
255	38.6	207.9	5,500 *
260	37.2	201.5	4,700 *

Oper. Rad. Feet	Boom Ang. Deg.	Boom Point Elev. Feet	Boom Capacity Pounds
<b>330 Ft. Boom</b>			
60	80.4	333.5	59,000 *
65	79.5	332.7	59,000 *
70	78.6	331.7	58,500 *
75	77.8	330.6	57,900 *
80	76.9	329.5	56,100 *
85	76.0	328.3	53,700 *
90	75.1	327.0	51,500 *
95	74.2	325.6	49,600 *
100	73.3	324.2	47,700 *
105	72.4	322.6	46,000 *
110	71.4	321.0	43,300
115	70.5	319.3	40,300
120	69.6	317.5	37,600
125	68.7	315.6	35,100
130	67.7	313.6	32,800
135	66.8	311.5	30,700
140	65.9	309.3	28,800
145	64.9	307.0	27,000
150	63.9	304.6	25,300
155	63.0	302.1	23,800
160	62.0	299.5	22,300
165	61.0	296.8	21,000
170	60.0	293.9	19,700
175	59.0	291.0	18,500
180	58.0	287.9	17,400
185	56.9	284.7	16,300
190	55.9	281.4	15,300
195	54.8	278.0	14,400
200	53.8	274.4	13,500
205	52.7	270.6	12,600
210	51.6	266.8	11,800
215	50.5	262.7	11,000
220	49.3	258.5	10,300
225	48.2	254.1	9,600
230	47.0	249.6	8,900
235	45.8	244.8	8,300
240	44.6	239.8	7,700
245	43.3	234.6	7,000 *
250	42.1	229.2	6,100 *
255	40.7	223.6	5,300 *
260	39.4	217.6	4,400 *

Oper. Rad. Feet	Boom Ang. Deg.	Boom Point Elev. Feet	Boom Capacity Pounds
<b>340 Ft. Boom</b>			
60	80.7	343.7	55,700 *
65	79.8	342.8	55,000 *
70	79.0	341.9	54,300 *
75	78.1	340.9	53,700 *
80	77.3	339.8	53,000 *
85	76.4	338.6	51,600 *
90	75.5	337.4	49,500 *
95	74.7	336.0	47,600 *
100	73.8	334.6	45,800 *
105	72.9	333.1	44,200 *
110	72.0	331.5	42,600 *
115	71.1	329.9	39,900
120	70.2	328.1	37,200
125	69.3	326.3	34,700
130	68.4	324.3	32,400
135	67.5	322.3	30,300
140	66.6	320.2	28,300
145	65.7	318.0	26,500
150	64.8	315.7	24,900
155	63.8	313.3	23,300
160	62.9	310.8	21,900
165	61.9	308.2	20,500
170	61.0	305.4	19,200
175	60.0	302.6	18,000
180	59.0	299.7	16,900
185	58.0	296.6	15,900
190	57.0	293.4	14,900
195	56.0	290.1	13,900
200	55.0	286.7	13,000
205	54.0	283.1	12,200
210	52.9	279.4	11,300
215	51.9	275.5	10,600
220	50.8	271.5	9,800
225	49.7	267.4	9,100
230	48.6	263.1	8,500
235	47.4	258.6	7,800
240	46.3	253.9	7,200
245	45.1	249.0	6,600
250	43.9	243.9	5,800 *
255	42.7	238.6	5,000 *
260	41.4	233.0	4,100 *