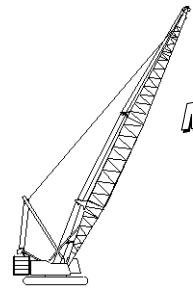




# Liftcrane Boom Capacities

**Boom No. 82LR**  
**184,600 Lb. Crane Counterweight**  
**44,000 Lb. Carbody Counterweight**  
**360 Degree Rating**

Meets  
ANSI B30.5  
Requirements



## 999 SERIES 2

**LIFTING CAPACITIES:** Lifting capacities for various boom lengths and operating radii are for freely suspended loads and do not exceed 75% of a static tipping load. Capacities based on structural competence are denoted by an asterisk (\*).

Upper boom point capacity for liftcrane service with single part whip line is 29,500 Lbs. When boom butt mounted auxiliary drum is used, capacity with single part whip line is 20,000 Lbs. In all cases, upper boom point capacities cannot exceed those listed for main boom capacity.

Weight of jib, all load blocks, hooks, weight ball, slings, hoist lines, etc., beneath boom and jib point sheaves, is considered part of main boom load. Boom is not to be lowered beyond radii where combined weights are greater than rated capacity. Where no capacity is shown, operation is not intended or approved.

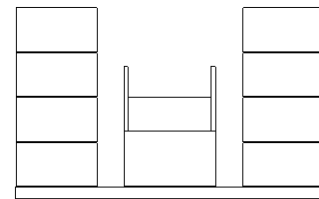
**OPERATING CONDITIONS:** Machine to operate in a level position on a firm uniformly supporting surface with gantry up. Refer to boom rigging **No. 196100** and Wire Rope Specification chart **No. 8315-A**. Crane operator judgment must be used to allow for dynamic load effects of swinging, hoisting or lowering, travel, wind conditions, as well as adverse operating conditions and physical machine depreciation. Refer to operators manual for operating guidelines.

**MACHINE TRAVEL:** Machine to travel on a firm, level and uniformly supporting surface and boom within boom angle range shown in capacity chart. Refer to Maximum Allowable Travel Specification chart **No. 8316-A**.

**OPERATING RADIUS:** Operating radius is horizontal distance from axis of rotation to center of vertical hoist line or load block. Boom angle is angle between horizontal and centerline of boom butt and inserts, and is an indication of operating radius. In all cases, operating radius shall govern capacity.

**BOOM POINT ELEVATION:** Boom point elevation is vertical distance from ground level to centerline of boom point shaft.

**MACHINE EQUIPMENT:** Machine equipped with 28 Ft. 2 in. crawlers, 48 in. treads, 10 Ft. 3 in. retractable gantry, 30 Ft. live mast, 20 part boom hoist reeving, boom support straps, 184,600 Lb. crane counterweight and two 22,000 Lb. carbody counterweights.



184,600 Lb. Crane Counterweight  
8 Side Boxes - 1 Center Box

**Boom Catwalks Deduct**  
Deduct 700 Lbs. from capacities when boom catwalks are attached.

Deduct From Capacities When Jib Is Attached		
Jib Length	Jib No. 134	Jib No. 123
30 Ft.	2,700 Lbs.	2,500 Lbs.
40 Ft.	3,500 Lbs.	3,100 Lbs.
50 Ft.	4,300 Lbs.	3,700 Lbs.
60 Ft.	5,100 Lbs.	4,400 Lbs.
70 Ft.	6,100 Lbs.	—
80 Ft.	7,100 Lbs.	—

Maximum Boom and Jib Lengths Lifted Unassisted					
WITHOUT BOOM CATWALKS					
Over End of Blocked Crawlers			Over Side of Crawlers		
Boom Length	Jib No. 134	Jib No. 123	Boom Length	Jib No. 134	Jib No. 123
320 Ft.	—	—	290 Ft.	—	—
310 Ft.	—	—	280 Ft.	—	30 Ft.
300 Ft.	—	40 Ft.	270 Ft.	40 Ft.	50 Ft.
290 Ft.	50 Ft.	60 Ft.	260 Ft.	70 Ft.	60 Ft.
280 Ft.	80 Ft.	60 Ft.	250 Ft.	80 Ft.	60 Ft.
WITH BOOM CATWALKS					
Over End of Blocked Crawlers			Over Side of Crawlers		
Boom Length	Jib No. 134	Jib No. 123	Boom Length	Jib No. 134	Jib No. 123
(a) 320 Ft.	—	—	290 Ft.	—	—
310 Ft.	—	—	280 Ft.	—	—
300 Ft.	—	30 Ft.	270 Ft.	(a) 40 Ft.	50 Ft.
290 Ft.	40 Ft.	(a) 60 Ft.	260 Ft.	(a) 70 Ft.	60 Ft.
280 Ft.	70 Ft.	60 Ft.	250 Ft.	80 Ft.	60 Ft.
270 Ft.	80 Ft.	60 Ft.			

Load block, hook and weight ball on ground at start.  
(a) Machine must be equipped with lowerworks jacking cylinders.

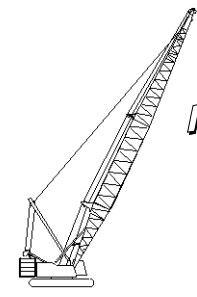
Consult jib chart for jib capacities. Upper boom point cannot be used when jib is attached.



# Liftcrane Boom Capacities

Meets  
**ANSI B30.5**  
Requirements

**Boom No. 82LR**  
**184,600 Lb. Crane Counterweight**  
**44,000 Lb. Carbody Counterweight**  
**360 Degree Rating**



## 999 SERIES 2

Oper. Rad. Feet	Boom Ang. Deg.	Boom Point Elev. Feet	Boom Capacity Pounds
<b>120 Ft. Boom</b>			
24	80.9	126.6	265,500 *
26	79.9	126.3	265,500 *
28	78.9	125.9	252,400 *
30	78.0	125.5	240,300 *
32	77.0	125.1	227,800
34	76.0	124.6	207,900
36	75.0	124.1	191,100
38	74.0	123.5	176,700
40	73.0	122.9	164,300
42	72.0	122.3	153,400
44	71.0	121.6	143,700
46	70.0	120.9	135,200
48	69.0	120.2	127,500
50	68.0	119.4	120,600
55	65.4	117.2	106,000
60	62.7	114.8	94,400
65	60.0	112.1	84,800
70	57.2	109.0	76,900
75	54.3	105.6	70,100
80	51.3	101.8	64,300
85	48.2	97.6	59,300
90	44.9	92.9	54,900
95	41.4	87.5	51,000
100	37.7	81.5	47,600
105	33.6	74.5	44,400
110	29.0	66.2	41,600
115	23.6	56.1	39,100
120	16.6	42.4	36,700
<b>130 Ft. Boom</b>			
26	80.7	136.4	265,500 *
28	79.8	136.1	263,400 *
30	78.9	135.7	251,300 *
32	78.0	135.3	227,800
34	77.1	134.9	207,900
36	76.2	134.4	191,100
38	75.3	133.9	176,700
40	74.4	133.4	164,200
42	73.5	132.8	153,300
44	72.5	132.2	143,600
46	71.6	131.5	135,100
48	70.7	130.8	127,400
50	69.7	130.1	120,500
55	67.4	128.2	105,900
60	65.0	125.9	94,300
65	62.5	123.5	84,700
70	60.0	120.7	76,700
75	57.4	117.7	70,000
80	54.8	114.3	64,200
85	52.0	110.6	59,200

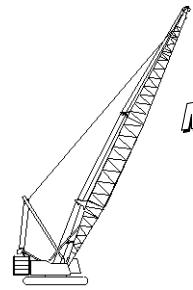
Oper. Rad. Feet	Boom Ang. Deg.	Boom Point Elev. Feet	Boom Capacity Pounds
<b>130 Ft. Boom</b>			
90	49.2	106.5	54,800
95	46.2	102.0	50,900
100	43.0	96.9	47,400
105	39.7	91.2	44,300
110	36.1	84.8	41,600
115	32.2	77.4	39,000
120	27.8	68.8	36,700
125	22.6	58.2	34,600
130	15.9	43.9	32,600
<b>140 Ft. Boom</b>			
28	80.5	146.3	265,500 *
30	79.7	145.9	251,600
32	78.9	145.5	227,800
34	78.0	145.1	207,900
36	77.2	144.7	191,100
38	76.4	144.2	176,600
40	75.5	143.7	164,100
42	74.7	143.2	153,200
44	73.8	142.6	143,500
46	73.0	142.0	135,000
48	72.1	141.4	127,300
50	71.3	140.7	120,400
55	69.1	138.9	105,800
60	66.9	136.9	94,100
65	64.6	134.6	84,500
70	62.3	132.1	76,600
75	60.0	129.4	69,800
80	57.6	126.4	64,000
85	55.2	123.0	59,000
90	52.6	119.4	54,600
95	50.0	115.4	50,700
100	47.3	111.0	47,300
105	44.4	106.1	44,200
110	41.4	100.8	41,400
115	38.2	94.8	38,800
120	34.8	88.0	36,500
125	31.0	80.3	34,400
130	26.8	71.2	32,500
135	21.8	60.1	30,700
140	15.4	45.2	29,000

Oper. Rad. Feet	Boom Ang. Deg.	Boom Point Elev. Feet	Boom Capacity Pounds
<b>150 Ft. Boom</b>			
30	80.4	156.1	251,600
32	79.6	155.7	227,700
34	78.9	155.3	207,800
36	78.1	154.9	191,000
38	77.3	154.5	176,500
40	76.5	154.0	164,000
42	75.7	153.5	153,100
44	74.9	153.0	143,400
46	74.1	152.4	134,800
48	73.3	151.9	127,100
50	72.5	151.2	120,200
55	70.5	149.6	105,600
60	68.5	147.7	93,900
65	66.4	145.6	84,300
70	64.3	143.3	76,400
75	62.2	140.8	69,600
80	60.0	138.1	63,800
85	57.8	135.0	58,800
90	55.5	131.7	54,400
95	53.1	128.2	50,500
100	50.7	124.2	47,100
105	48.2	120.0	44,000
110	45.6	115.3	41,200
115	42.8	110.1	38,700
120	39.9	104.5	36,300
125	36.9	98.2	34,200
130	33.6	91.1	32,300
135	29.9	83.0	30,500
140	25.8	73.5	28,900
145	21.0	62.0	27,300



# Liftcrane Boom Capacities

Meets  
**ANSI B30.5**  
 Requirements



**Boom No. 82LR**  
**184,600 Lb. Crane Counterweight**  
**44,000 Lb. Carbody Counterweight**  
**360 Degree Rating**

## 999 SERIES 2

Oper. Rad. Feet	Boom Ang. Deg.	Boom Point Elev. Feet	Boom Capacity Pounds
<b>160 Ft. Boom</b>			
30	81.0	166.2	236,000 *
32	80.3	165.9	227,500
34	79.6	165.5	207,600
36	78.8	165.1	190,700
38	78.1	164.7	176,200
40	77.4	164.3	163,700
42	76.6	163.8	152,700
44	75.9	163.3	143,100
46	75.2	162.8	134,500
48	74.4	162.3	126,800
50	73.7	161.7	119,800
55	71.8	160.1	105,200
60	69.9	158.4	93,500
65	68.0	156.5	83,900
70	66.0	154.4	75,900
75	64.1	152.0	69,200
80	62.0	149.5	63,400
85	60.0	146.7	58,300
90	57.9	143.7	53,900
95	55.8	140.4	50,000
100	53.6	136.9	46,600
105	51.3	133.1	43,500
110	49.0	128.9	40,700
115	46.6	124.3	38,200
120	44.0	119.4	35,900
125	41.4	114.0	33,800
130	38.6	108.0	31,800
135	35.7	101.4	30,000
140	32.5	94.0	28,400
145	29.0	85.6	26,900
150	25.0	75.8	25,400
155	20.4	63.8	24,100

Oper. Rad. Feet	Boom Ang. Deg.	Boom Point Elev. Feet	Boom Capacity Pounds
<b>170 Ft. Boom</b>			
32	80.9	176.0	227,400
34	80.2	175.7	207,400
36	79.5	175.3	190,500
38	78.8	174.9	176,000
40	78.1	174.5	163,500
42	77.4	174.1	152,500
44	76.7	173.6	142,800
46	76.0	173.1	134,200
48	75.3	172.6	126,500
50	74.7	172.1	119,600
55	72.9	170.6	104,900
60	71.1	169.0	93,200
65	69.3	167.2	83,600
70	67.5	165.2	75,600
75	65.7	163.1	68,900
80	63.8	160.7	63,100
85	61.9	158.2	58,000
90	60.0	155.4	53,600
95	58.0	152.4	49,800
100	56.0	149.1	46,300
105	54.0	145.6	43,200
110	51.9	141.8	40,400
115	49.7	137.8	37,900
120	47.4	133.4	35,600
125	45.1	128.6	33,500
130	42.7	123.4	31,500
135	40.1	117.7	29,800
140	37.4	111.5	28,100
145	34.6	104.6	26,600
150	31.5	96.9	25,200
155	28.1	88.2	23,800
160	24.2	78.0	22,600
165	19.7	65.6	21,400

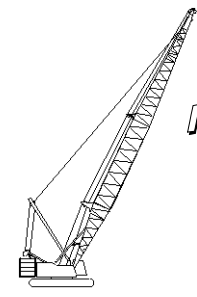
Oper. Rad. Feet	Boom Ang. Deg.	Boom Point Elev. Feet	Boom Capacity Pounds
<b>180 Ft. Boom</b>			
34	80.7	185.8	206,400 *
36	80.1	185.5	190,300
38	79.4	185.1	175,900
40	78.8	184.7	163,300
42	78.1	184.3	152,300
44	77.5	183.9	142,600
46	76.8	183.4	134,000
48	76.2	182.9	126,300
50	75.5	182.4	119,300
55	73.9	181.1	104,700
60	72.2	179.5	93,000
65	70.5	177.9	83,400
70	68.8	176.0	75,400
75	67.1	174.0	68,600
80	65.4	171.8	62,800
85	63.6	169.4	57,800
90	61.8	166.8	53,300
95	60.0	164.0	49,500
100	58.1	161.0	46,000
105	56.3	157.8	42,900
110	54.3	154.4	40,100
115	52.3	150.6	37,600
120	50.3	146.6	35,300
125	48.2	142.3	33,200
130	46.0	137.7	31,200
135	43.8	132.7	29,500
140	41.4	127.2	27,800
145	38.9	121.3	26,300
150	36.3	114.8	24,900
155	33.6	107.7	23,600
160	30.6	99.7	22,300
165	27.3	90.6	21,200
170	23.6	80.1	20,100
175	19.2	67.3	19,000



# Liftcrane Boom Capacities

Meets  
**ANSI B30.5**  
Requirements

**Boom No. 82LR**  
**184,600 Lb. Crane Counterweight**  
**44,000 Lb. Carbody Counterweight**  
**360 Degree Rating**



## 999 SERIES 2

Oper. Rad. Feet	Boom Ang. Deg.	Boom Point Elev. Feet	Boom Capacity Pounds
<b>190 Ft. Boom</b>			
36	80.6	195.6	190,200
38	80.0	195.3	175,700
40	79.4	194.9	163,100
42	78.8	194.5	152,100
44	78.2	194.1	142,400
46	77.5	193.7	133,800
48	76.9	193.2	126,100
50	76.3	192.7	119,100
55	74.7	191.5	104,400
60	73.2	190.0	92,700
65	71.6	188.4	83,100
70	70.0	186.7	75,100
75	68.4	184.8	68,300
80	66.8	182.7	62,500
85	65.1	180.5	57,500
90	63.4	178.1	53,100
95	61.7	175.5	49,200
100	60.0	172.7	45,700
105	58.2	169.7	42,600
110	56.5	166.5	39,800
115	54.6	163.1	37,300
120	52.8	159.4	35,000
125	50.8	155.5	32,900
130	48.9	151.2	30,900
135	46.8	146.7	29,200
140	44.7	141.8	27,500
145	42.5	136.6	26,000
150	40.3	130.9	24,600
155	37.9	124.8	23,300
160	35.3	118.0	22,000
165	32.6	110.6	20,900
170	29.7	102.4	19,800
175	26.5	93.0	18,800
180	22.9	82.1	17,800
185	18.7	69.0	16,900

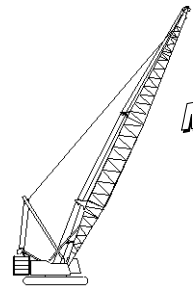
Oper. Rad. Feet	Boom Ang. Deg.	Boom Point Elev. Feet	Boom Capacity Pounds
<b>200 Ft. Boom</b>			
38	80.5	205.4	175,400
40	79.9	205.1	162,800
42	79.3	204.7	151,800
44	78.8	204.3	142,100
46	78.2	203.9	133,400
48	77.6	203.5	125,700
50	77.0	203.0	118,700
55	75.5	201.8	104,000
60	74.0	200.4	92,300
65	72.5	198.9	82,600
70	71.0	197.3	74,600
75	69.5	195.5	67,800
80	68.0	193.6	62,000
85	66.4	191.5	57,000
90	64.8	189.2	52,600
95	63.3	186.8	48,700
100	61.6	184.1	45,200
105	60.0	181.4	42,100
110	58.3	178.4	39,300
115	56.6	175.2	36,800
120	54.9	171.8	34,500
125	53.1	168.2	32,400
130	51.3	164.3	30,400
135	49.5	160.1	28,600
140	47.5	155.7	27,000
145	45.6	151.0	25,500
150	43.5	145.9	24,100
155	41.4	140.4	22,700
160	39.2	134.5	21,500
165	36.9	128.2	20,400
170	34.4	121.2	19,300
175	31.8	113.5	18,200
180	29.0	105.0	17,300
185	25.8	95.3	16,400
190	22.3	84.1	15,500
195	18.2	70.6	14,700

Oper. Rad. Feet	Boom Ang. Deg.	Boom Point Elev. Feet	Boom Capacity Pounds
<b>210 Ft. Boom</b>			
38	81.0	215.5	168,600 *
40	80.4	215.2	162,500
42	79.9	214.9	151,500
44	79.3	214.5	141,800
46	78.7	214.1	133,100
48	78.2	213.7	125,400
50	77.6	213.3	118,400
55	76.2	212.1	103,700
60	74.8	210.8	91,900
65	73.4	209.4	82,300
70	72.0	207.8	74,300
75	70.5	206.1	67,500
80	69.1	204.3	61,700
85	67.6	202.3	56,600
90	66.1	200.2	52,200
95	64.6	197.9	48,300
100	63.1	195.4	44,800
105	61.6	192.8	41,700
110	60.0	190.0	38,900
115	58.4	187.0	36,400
120	56.8	183.9	34,100
125	55.2	180.5	32,000
130	53.5	176.9	30,100
135	51.8	173.1	28,300
140	50.0	169.0	26,600
145	48.2	164.7	25,100
150	46.3	160.1	23,700
155	44.4	155.1	22,400
160	42.4	149.8	21,200
165	40.4	144.2	20,000
170	38.2	138.1	18,900
175	36.0	131.4	17,900
180	33.6	124.2	16,900
185	31.0	116.3	16,000
190	28.2	107.5	15,200
195	25.2	97.6	14,300
200	21.8	86.1	13,500
205	17.8	72.2	12,800



# Liftcrane Boom Capacities

Meets  
ANSI B30.5  
Requirements



**Boom No. 82LR**  
**184,600 Lb. Crane Counterweight**  
**44,000 Lb. Carbody Counterweight**  
**360 Degree Rating**

## 999 SERIES 2

Oper. Rad. Feet	Boom Ang. Deg.	Boom Point Elev. Feet	Boom Capacity Pounds
<b>220 Ft. Boom</b>			
40	80.8	225.4	152,500 *
42	80.3	225.0	151,200
44	79.8	224.7	141,500
46	79.3	224.3	132,800
48	78.7	223.9	125,100
50	78.2	223.5	118,100
55	76.9	222.4	103,400
60	75.5	221.2	91,600
65	74.2	219.8	82,000
70	72.8	218.3	73,900
75	71.4	216.7	67,100
80	70.1	215.0	61,300
85	68.7	213.1	56,300
90	67.3	211.1	51,800
95	65.9	208.9	47,900
100	64.4	206.6	44,500
105	63.0	204.1	41,400
110	61.5	201.5	38,600
115	60.0	198.7	36,000
120	58.5	195.7	33,700
125	56.9	192.5	31,600
130	55.4	189.2	29,700
135	53.8	185.6	27,900
140	52.1	181.9	26,300
145	50.5	177.9	24,700
150	48.8	173.6	23,300
155	47.0	169.1	22,000
160	45.2	164.3	20,800
165	43.3	159.1	19,600
170	41.4	153.7	18,500
175	39.4	147.8	17,500
180	37.3	141.5	16,600
185	35.1	134.6	15,700
190	32.8	127.2	14,800
195	30.3	119.1	14,000
200	27.6	110.0	13,200
205	24.6	99.8	12,500
210	21.3	88.0	11,800
215	17.3	73.7	11,100

Oper. Rad. Feet	Boom Ang. Deg.	Boom Point Elev. Feet	Boom Capacity Pounds
<b>230 Ft. Boom</b>			
42	80.7	235.2	137,900 *
44	80.2	234.8	137,400 *
46	79.7	234.5	132,500
48	79.2	234.1	124,800
50	78.7	233.7	117,800
55	77.4	232.7	103,100
60	76.2	231.5	91,300
65	74.9	230.2	81,600
70	73.6	228.8	73,600
75	72.3	227.2	66,800
80	71.0	225.6	61,000
85	69.6	223.8	55,900
90	68.3	221.9	51,500
95	67.0	219.8	47,600
100	65.6	217.6	44,100
105	64.2	215.3	41,000
110	62.8	212.8	38,200
115	61.4	210.1	35,600
120	60.0	207.3	33,300
125	58.6	204.4	31,200
130	57.1	201.2	29,300
135	55.6	197.9	27,500
140	54.1	194.4	25,900
145	52.5	190.6	24,400
150	50.9	186.7	23,000
155	49.3	182.5	21,600
160	47.6	178.1	20,400
165	45.9	173.4	19,300
170	44.2	168.4	18,200
175	42.3	163.1	17,200
180	40.5	157.4	16,200
185	38.5	151.3	15,300
190	36.5	144.8	14,400
195	34.3	137.8	13,600
200	32.0	130.1	12,800
205	29.6	121.7	12,100
210	27.0	112.4	11,400
215	24.1	102.0	10,700
220	20.8	89.9	10,100
225	17.0	75.2	9,500

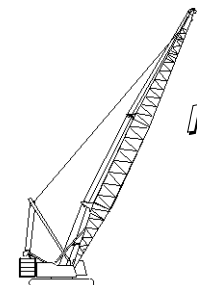
Oper. Rad. Feet	Boom Ang. Deg.	Boom Point Elev. Feet	Boom Capacity Pounds
<b>240 Ft. Boom</b>			
44	80.6	245.0	125,200 *
46	80.2	244.6	124,600 *
48	79.7	244.3	124,100 *
50	79.2	243.9	117,400
55	78.0	242.9	102,600
60	76.8	241.8	90,800
65	75.5	240.5	81,200
70	74.3	239.2	73,100
75	73.0	237.7	66,300
80	71.8	236.1	60,500
85	70.5	234.4	55,400
90	69.3	232.6	51,000
95	68.0	230.6	47,100
100	66.7	228.5	43,600
105	65.4	226.3	40,500
110	64.1	224.0	37,700
115	62.7	221.5	35,100
120	61.4	218.8	32,800
125	60.0	216.0	30,700
130	58.6	213.0	28,800
135	57.2	209.9	27,000
140	55.8	206.6	25,300
145	54.3	203.1	23,800
150	52.8	199.4	22,400
155	51.3	195.5	21,100
160	49.8	191.4	19,900
165	48.2	187.0	18,700
170	46.6	182.4	17,600
175	44.9	177.6	16,600
180	43.2	172.4	15,600
185	41.4	166.9	14,700
190	39.6	161.0	13,900
195	37.7	154.8	13,100
200	35.7	148.1	12,300
205	33.6	140.8	11,600
210	31.3	133.0	10,900
215	29.0	124.3	10,200
220	26.4	114.8	9,600
225	23.6	104.1	9,000
230	20.4	91.7	8,400
235	16.6	76.7	7,800



# Liftcrane Boom Capacities

Meets  
**ANSI B30.5**  
Requirements

**Boom No. 82LR**  
**184,600 Lb. Crane Counterweight**  
**44,000 Lb. Carbody Counterweight**  
**360 Degree Rating**



## 999 SERIES 2

Oper. Rad. Feet	Boom Ang. Deg.	Boom Point Elev. Feet	Boom Capacity Pounds
<b>250 Ft. Boom</b>			
44	81.0	255.1	113,800 *
46	80.6	254.8	113,300 *
48	80.1	254.4	112,900 *
50	79.6	254.1	112,400 *
55	78.5	253.1	102,300
60	77.3	252.0	90,500
65	76.1	250.8	80,800
70	74.9	249.6	72,700
75	73.7	248.2	65,900
80	72.5	246.6	60,100
85	71.3	245.0	55,000
90	70.1	243.3	50,600
95	68.9	241.4	46,700
100	67.7	239.4	43,200
105	66.4	237.3	40,100
110	65.2	235.0	37,300
115	63.9	232.7	34,700
120	62.6	230.1	32,400
125	61.3	227.5	30,300
130	60.0	224.7	28,400
135	58.7	221.7	26,600
140	57.3	218.6	24,900
145	55.9	215.3	23,400
150	54.5	211.8	22,000
155	53.1	208.2	20,700
160	51.7	204.3	19,500
165	50.2	200.2	18,300
170	48.7	196.0	17,200
175	47.2	191.5	16,200
180	45.6	186.7	15,200
185	43.9	181.6	14,300
190	42.3	176.3	13,500
195	40.5	170.6	12,700
200	38.7	164.6	11,900
205	36.9	158.2	11,200
210	34.9	151.2	10,500
215	32.9	143.8	9,800
220	30.7	135.7	9,200
225	28.4	126.9	8,600
230	25.8	117.1	8,000
235	23.1	106.1	7,400
240	19.9	93.4	6,900
245	16.3	78.2	6,400

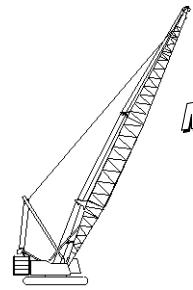
Oper. Rad. Feet	Boom Ang. Deg.	Boom Point Elev. Feet	Boom Capacity Pounds
<b>260 Ft. Boom</b>			
46	80.9	264.9	103,700 *
48	80.5	264.6	103,300 *
50	80.0	264.2	102,800 *
55	78.9	263.3	101,700 *
60	77.8	262.3	90,100
65	76.7	261.1	80,400
70	75.5	259.9	72,400
75	74.4	258.6	65,500
80	73.2	257.1	59,700
85	72.1	255.5	54,600
90	70.9	253.9	50,200
95	69.7	252.1	46,300
100	68.6	250.2	42,800
105	67.4	248.2	39,700
110	66.2	246.0	36,800
115	65.0	243.7	34,300
120	63.7	241.3	32,000
125	62.5	238.8	29,900
130	61.3	236.1	28,000
135	60.0	233.3	26,200
140	58.7	230.4	24,500
145	57.4	227.2	23,000
150	56.1	224.0	21,600
155	54.8	220.5	20,300
160	53.4	216.9	19,000
165	52.0	213.1	17,900
170	50.6	209.1	16,800
175	49.2	204.9	15,800
180	47.7	200.4	14,800
185	46.2	195.8	13,900
190	44.6	190.8	13,100
195	43.0	185.6	12,300
200	41.4	180.1	11,500
205	39.7	174.3	10,800
210	38.0	168.1	10,100
215	36.1	161.4	9,400
220	34.2	154.4	8,800
225	32.2	146.7	8,200
230	30.1	138.4	7,600
235	27.8	129.4	7,000
240	25.3	119.4	6,500
245	22.6	108.2	6,000
250	19.6	95.2	5,500
255	15.9	79.6	4,800 *

Oper. Rad. Feet	Boom Ang. Deg.	Boom Point Elev. Feet	Boom Capacity Pounds
<b>270 Ft. Boom</b>			
48	80.8	274.7	94,900 *
50	80.4	274.4	94,400 *
55	79.3	273.5	93,400 *
60	78.2	272.5	89,700
65	77.2	271.4	80,000
70	76.1	270.2	72,000
75	75.0	268.9	65,100
80	73.9	267.5	59,300
85	72.8	266.0	54,200
90	71.7	264.4	49,800
95	70.5	262.7	45,900
100	69.4	260.9	42,400
105	68.3	259.0	39,300
110	67.1	256.9	36,400
115	66.0	254.7	33,900
120	64.8	252.4	31,600
125	63.6	250.0	29,500
130	62.4	247.5	27,500
135	61.2	244.8	25,800
140	60.0	242.0	24,100
145	58.8	239.0	22,600
150	57.5	235.9	21,200
155	56.3	232.7	19,900
160	55.0	229.2	18,600
165	53.7	225.6	17,500
170	52.3	221.9	16,400
175	51.0	217.9	15,400
180	49.6	213.8	14,400
185	48.2	209.4	13,500
190	46.7	204.8	12,700
195	45.3	200.0	11,800
200	43.8	194.9	11,100
205	42.2	189.5	10,400
210	40.6	183.9	9,700
215	38.9	177.9	9,000
220	37.2	171.5	8,400
225	35.4	164.7	7,800
230	33.6	157.4	7,200
235	31.6	149.6	6,600
240	29.5	141.1	6,100
245	27.3	131.8	5,600
250	24.9	121.6	5,100
255	22.2	110.1	4,600
260	19.2	96.9	4,200



# Liftcrane Boom Capacities

Meets  
ANSI B30.5  
Requirements



**Boom No. 82LR**  
**184,600 Lb. Crane Counterweight**  
**44,000 Lb. Carbody Counterweight**  
**360 Degree Rating**

## 999 SERIES 2

Oper. Rad. Feet	Boom Ang. Deg.	Boom Point Elev. Feet	Boom Capacity Pounds
<b>280 Ft. Boom</b>			
50	80.8	284.5	85,600 *
55	79.7	283.7	84,700 *
60	78.7	282.7	83,700 *
65	77.6	281.6	79,600
70	76.6	280.5	71,500
75	75.5	279.3	64,700
80	74.5	277.9	58,800
85	73.4	276.5	53,700
90	72.3	274.9	49,300
95	71.3	273.3	45,300
100	70.2	271.5	41,900
105	69.1	269.7	38,700
110	68.0	267.7	35,900
115	66.9	265.6	33,400
120	65.8	263.4	31,100
125	64.6	261.1	28,900
130	63.5	258.7	27,000
135	62.3	256.1	25,200
140	61.2	253.5	23,600
145	60.0	250.6	22,000
150	58.8	247.7	20,600
155	57.6	244.6	19,300
160	56.4	241.3	18,100
165	55.2	237.9	16,900
170	53.9	234.4	15,800
175	52.6	230.6	14,800
180	51.3	226.7	13,900
185	50.0	222.6	13,000
190	48.6	218.3	12,100
195	47.3	213.8	11,300
200	45.9	209.1	10,500
205	44.4	204.1	9,800
210	42.9	198.9	9,100
215	41.4	193.4	8,400
220	39.8	187.5	7,800
225	38.2	181.4	7,200
230	36.5	174.8	6,600
235	34.8	167.8	6,100
240	32.9	160.4	5,600
245	31.0	152.4	5,000
250	29.0	143.7	4,600
255	26.8	134.2	4,100

Oper. Rad. Feet	Boom Ang. Deg.	Boom Point Elev. Feet	Boom Capacity Pounds
<b>290 Ft. Boom</b>			
55	80.1	293.8	77,900 *
60	79.1	292.9	77,000 *
65	78.1	291.9	76,100 *
70	77.0	290.8	71,100
75	76.0	289.6	64,300
80	75.0	288.3	58,400
85	74.0	286.9	53,300
90	73.0	285.4	48,900
95	71.9	283.8	44,900
100	70.9	282.2	41,400
105	69.8	280.4	38,300
110	68.8	278.5	35,500
115	67.7	276.5	32,900
120	66.6	274.4	30,600
125	65.6	272.2	28,500
130	64.5	269.8	26,600
135	63.4	267.4	24,800
140	62.3	264.8	23,100
145	61.1	262.1	21,600
150	60.0	259.3	20,200
155	58.9	256.3	18,900
160	57.7	253.3	17,600
165	56.5	250.0	16,500
170	55.3	246.6	15,400
175	54.1	243.1	14,400
180	52.9	239.4	13,400
185	51.6	235.5	12,500
190	50.4	231.5	11,700
195	49.1	227.2	10,900
200	47.7	222.8	10,100
205	46.4	218.2	9,400
210	45.0	213.3	8,700
215	43.6	208.2	8,000
220	42.2	202.8	7,400
225	40.7	197.1	6,800
230	39.1	191.1	6,200
235	37.5	184.8	5,700
240	35.9	178.1	5,100
245	34.1	170.9	4,600
250	32.3	163.3	4,100

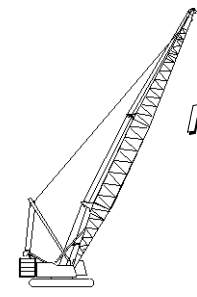
Oper. Rad. Feet	Boom Ang. Deg.	Boom Point Elev. Feet	Boom Capacity Pounds
<b>300 Ft. Boom</b>			
55	80.4	304.0	71,600 *
60	79.4	303.1	70,700 *
65	78.5	302.1	69,800 *
70	77.5	301.0	68,900 *
75	76.5	299.9	63,900
80	75.5	298.6	58,000
85	74.5	297.3	52,900
90	73.5	295.9	48,400
95	72.5	294.3	44,500
100	71.5	292.7	41,000
105	70.5	291.0	37,900
110	69.5	289.2	35,100
115	68.5	287.3	32,500
120	67.5	285.2	30,200
125	66.4	283.1	28,100
130	65.4	280.9	26,100
135	64.3	278.5	24,400
140	63.3	276.1	22,700
145	62.2	273.5	21,200
150	61.1	270.8	19,800
155	60.0	268.0	18,400
160	58.9	265.0	17,200
165	57.8	261.9	16,000
170	56.6	258.7	15,000
175	55.5	255.3	13,900
180	54.3	251.8	13,000
185	53.1	248.2	12,100
190	51.9	244.3	11,200
195	50.7	240.3	10,400
200	49.5	236.1	9,600
205	48.2	231.8	8,900
210	46.9	227.2	8,200
215	45.6	222.4	7,600
220	44.2	217.4	6,900
225	42.8	212.1	6,300
230	41.4	206.6	5,800
235	39.9	200.8	5,200
240	38.4	194.6	4,700
245	36.9	188.2	4,200



# Liftcrane Boom Capacities

Meets  
ANSI B30.5  
Requirements

**Boom No. 82LR**  
**184,600 Lb. Crane Counterweight**  
**44,000 Lb. Carbody Counterweight**  
**360 Degree Rating**



## 999 SERIES 2

Oper. Rad. Feet	Boom Ang. Deg.	Boom Point Elev. Feet	Boom Capacity Pounds
<b>310 Ft. Boom</b>			
55	80.7	314.1	70,500 *
60	79.8	313.2	69,700 *
65	78.8	312.3	69,000 *
70	77.9	311.3	66,000 *
75	76.9	310.1	62,900 *
80	76.0	308.9	58,000
85	75.0	307.7	52,900
90	74.1	306.3	48,400
95	73.1	304.8	44,500
100	72.2	303.2	41,000
105	71.2	301.6	37,900
110	70.2	299.8	35,000
115	69.2	298.0	32,500
120	68.2	296.0	30,200
125	67.2	294.0	28,000
130	66.2	291.8	26,100
135	65.2	289.6	24,300
140	64.2	287.2	22,700
145	63.2	284.7	21,100
150	62.1	282.2	19,700
155	61.1	279.4	18,400
160	60.0	276.6	17,200
165	58.9	273.7	16,000
170	57.8	270.6	14,900
175	56.7	267.4	13,900
180	55.6	264.0	12,900
185	54.5	260.5	12,000
190	53.4	256.9	11,200
195	52.2	253.1	10,400
200	51.0	249.1	9,600
205	49.8	245.0	8,900
210	48.6	240.7	8,200
215	47.4	236.2	7,500
220	46.1	231.5	6,900
225	44.8	226.6	6,300
230	43.5	221.4	5,700
235	42.1	216.0	5,200
240	40.7	210.3	4,600
245	39.3	204.4	4,100

Oper. Rad. Feet	Boom Ang. Deg.	Boom Point Elev. Feet	Boom Capacity Pounds
<b>320 Ft. Boom</b>			
55	81.0	324.2	65,300 *
60	80.1	323.4	64,600 *
65	79.2	322.5	63,800 *
70	78.3	321.5	63,100 *
75	77.4	320.4	60,600 *
80	76.4	319.2	57,500
85	75.5	318.0	52,400
90	74.6	316.7	47,900
95	73.7	315.2	44,000
100	72.7	313.7	40,500
105	71.8	312.1	37,400
110	70.8	310.4	34,500
115	69.9	308.7	32,000
120	68.9	306.8	29,700
125	68.0	304.8	27,500
130	67.0	302.7	25,600
135	66.0	300.6	23,800
140	65.0	298.3	22,100
145	64.1	295.9	20,600
150	63.1	293.4	19,200
155	62.0	290.8	17,900
160	61.0	288.1	16,600
165	60.0	285.3	15,500
170	59.0	282.3	14,400
175	57.9	279.3	13,400
180	56.8	276.1	12,400
185	55.8	272.7	11,500
190	54.7	269.3	10,600
195	53.6	265.6	9,800
200	52.5	261.9	9,100
205	51.3	258.0	8,300
210	50.2	253.9	7,600
215	49.0	249.6	7,000
220	47.8	245.2	6,300
225	46.6	240.5	5,700
230	45.3	235.7	5,200
235	44.0	230.6	4,600
240	42.7	225.4	4,100