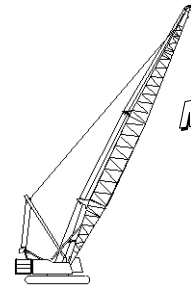




Liftcrane Boom Capacities

Boom No. 82LR
149,600 Lb. Counterweight
360 Degree Rating

Meets
ANSI B30.5
Requirements



999 SERIES 1

LIFTING CAPACITIES: Lifting capacities for various boom lengths and operating radii are for freely suspended loads and do not exceed 75% of a static tipping load. Capacities based on structural competence are denoted by an asterisk (*).

MACHINE TRAVEL: Machine to travel on a firm, level and uniformly supporting surface and boom within boom angle range shown in capacity chart. Refer to Maximum Allowable Travel Specification chart No. 8316-A.

Upper boom point capacity for liftcrane service with single part whip line is 29,500 Lbs. When boom butt mounted auxiliary drum is used, capacity with single part whip line is 20,000 Lbs. In all cases, upper boom point capacities cannot exceed those listed for main boom capacity.

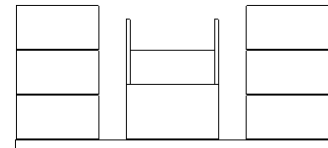
OPERATING RADIUS: Operating radius is horizontal distance from axis of rotation to center of vertical hoist line or load block. Boom angle is angle between horizontal and centerline of boom butt and inserts, and is an indication of operating radius. In all cases, operating radius shall govern capacity.

Weight of jib, all load blocks, hooks, weight ball, slings, hoist lines, etc., beneath boom and jib point sheaves, is considered part of main boom load. Boom is not to be lowered beyond radii where combined weights are greater than rated capacity. Where no capacity is shown, operation is not intended or approved.

BOOM POINT ELEVATION: Boom point elevation is vertical distance from ground level to centerline of boom point shaft.

OPERATING CONDITIONS: Machine to operate in a level position on a firm uniformly supporting surface with gantry up. Refer to boom rigging No. 196100 and Wire Rope Specification chart No. 8315-A. Crane operator judgment must be used to allow for dynamic load effects of swinging, hoisting or lowering, travel, wind conditions, as well as adverse operating conditions and physical machine depreciation. Refer to operators manual for operating guidelines.

MACHINE EQUIPMENT: Machine equipped with 28 Ft. 2 in. crawlers, 48 in. treads, 10 Ft. 3 in. retractable gantry, 30 Ft. live mast, 20 part boom hoist reeving, boom support straps and 149,600 Lb. counterweight.



149,600 Lb. Crane Counterweight
6 Side Boxes - 1 Center Box

Maximum Boom and Jib Lengths Lifted Unassisted					
WITHOUT BOOM CATWALKS					
Over End of Blocked Crawlers			Over Side of Crawlers		
Boom Length	Jib No. 134	Jib No. 123	Boom Length	Jib No. 134	Jib No. 123
280 Ft.	—	—	260 Ft.	—	—
270 Ft.	—	—	250 Ft.	—	—
260 Ft.	40 Ft.	50 Ft.	240 Ft.	30 Ft.	40 Ft.
250 Ft.	60 Ft.	60 Ft.	230 Ft.	60 Ft.	60 Ft.
240 Ft.	80 Ft.	60 Ft.	220 Ft.	80 Ft.	60 Ft.
WITH BOOM CATWALKS					
Over End of Blocked Crawlers			Over Side of Crawlers		
Boom Length	Jib No. 134	Jib No. 123	Boom Length	Jib No. 134	Jib No. 123
280 Ft.	—	—	260 Ft.	—	—
270 Ft.	—	—	250 Ft.	—	—
260 Ft.	30 Ft.	(a) 50 Ft.	240 Ft.	(a) 30 Ft.	40 Ft.
250 Ft.	(a) 60 Ft.	60 Ft.	230 Ft.	(a) 60 Ft.	60 Ft.
240 Ft.	80 Ft.	60 Ft.	220 Ft.	80 Ft.	60 Ft.
Load block, hook and weight ball on ground at start. (a) Machine must be equipped with lowerworks jacking cylinders.					

Boom Catwalks Deduct
Deduct 700 Lbs. from capacities when boom catwalks are attached.

Deduct From Capacities When Jib Is Attached		
Jib Length	Jib No. 134	Jib No. 123
30 Ft.	2,700 Lbs.	2,500 Lbs.
40 Ft.	3,500 Lbs.	3,100 Lbs.
50 Ft.	4,300 Lbs.	3,700 Lbs.
60 Ft.	5,100 Lbs.	4,400 Lbs.
70 Ft.	6,100 Lbs.	—
80 Ft.	7,100 Lbs.	—

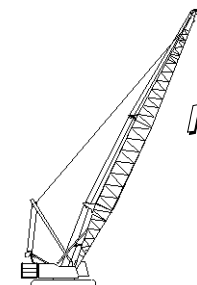
Consult jib chart for jib capacities. Upper boom point cannot be used when jib is attached.



Liftcrane Boom Capacities

Boom No. 82LR
149,600 Lb. Counterweight
360 Degree Rating

**Meets
ANSI B30.5
Requirements**



999 SERIES 1

Oper. Rad. Feet	Boom Ang. Deg.	Boom Point Elev. Feet	Boom Capacity Pounds
120 Ft. Boom			
24	80.9	126.6	265,500 *
26	79.9	126.3	255,500
28	78.9	125.9	225,900
30	78.0	125.5	202,300
32	77.0	125.1	183,000
34	76.0	124.6	166,900
36	75.0	124.1	153,200
38	74.0	123.5	141,600
40	73.0	122.9	131,400
42	72.0	122.3	122,600
44	71.0	121.6	114,700
46	70.0	120.9	107,800
48	69.0	120.2	101,600
50	68.0	119.4	96,000
55	65.4	117.2	84,100
60	62.7	114.8	74,700
65	60.0	112.1	66,900
70	57.2	109.0	60,400
75	54.3	105.6	55,000
80	51.3	101.8	50,300
85	48.2	97.6	46,200
90	44.9	92.9	42,600
95	41.4	87.5	39,400
100	37.7	81.5	36,600
105	33.6	74.5	34,100
110	29.0	66.2	31,800
115	23.6	56.1	29,700
120	16.6	42.4	27,800
130 Ft. Boom			
26	80.7	136.4	255,600
28	79.8	136.1	226,000
30	78.9	135.7	202,300
32	78.0	135.3	183,000
34	77.1	134.9	166,900
36	76.2	134.4	153,200
38	75.3	133.9	141,500
40	74.4	133.4	131,400
42	73.5	132.8	122,500
44	72.5	132.2	114,700
46	71.6	131.5	107,700
48	70.7	130.8	101,500
50	69.7	130.1	95,900
55	67.4	128.2	84,000
60	65.0	125.9	74,600
65	62.5	123.5	66,800
70	60.0	120.7	60,300
75	57.4	117.7	54,800
80	54.8	114.3	50,100
85	52.0	110.6	46,100

Oper. Rad. Feet	Boom Ang. Deg.	Boom Point Elev. Feet	Boom Capacity Pounds
130 Ft. Boom			
90	49.2	106.5	42,500
95	46.2	102.0	39,300
100	43.0	96.9	36,500
105	39.7	91.2	34,000
110	36.1	84.8	31,700
115	32.2	77.4	29,600
120	27.8	68.8	27,700
125	22.6	58.2	26,000
130	15.9	43.9	24,400
140 Ft. Boom			
28	80.5	146.3	226,100
30	79.7	145.9	202,400
32	78.9	145.5	183,000
34	78.0	145.1	166,800
36	77.2	144.7	153,200
38	76.4	144.2	141,500
40	75.5	143.7	131,300
42	74.7	143.2	122,400
44	73.8	142.6	114,600
46	73.0	142.0	107,600
48	72.1	141.4	101,400
50	71.3	140.7	95,700
55	69.1	138.9	83,900
60	66.9	136.9	74,400
65	64.6	134.6	66,600
70	62.3	132.1	60,100
75	60.0	129.4	54,700
80	57.6	126.4	50,000
85	55.2	123.0	45,900
90	52.6	119.4	42,300
95	50.0	115.4	39,100
100	47.3	111.0	36,300
105	44.4	106.1	33,800
110	41.4	100.8	31,500
115	38.2	94.8	29,500
120	34.8	88.0	27,600
125	31.0	80.3	25,900
130	26.8	71.2	24,300
135	21.8	60.1	22,800
140	15.4	45.2	21,400

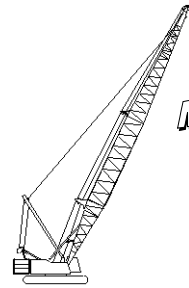
Oper. Rad. Feet	Boom Ang. Deg.	Boom Point Elev. Feet	Boom Capacity Pounds
150 Ft. Boom			
30	80.4	156.1	202,300
32	79.6	155.7	182,900
34	78.9	155.3	166,800
36	78.1	154.9	153,100
38	77.3	154.5	141,300
40	76.5	154.0	131,200
42	75.7	153.5	122,300
44	74.9	153.0	114,400
46	74.1	152.4	107,400
48	73.3	151.9	101,200
50	72.5	151.2	95,600
55	70.5	149.6	83,700
60	68.5	147.7	74,200
65	66.4	145.6	66,400
70	64.3	143.3	59,900
75	62.2	140.8	54,500
80	60.0	138.1	49,800
85	57.8	135.0	45,700
90	55.5	131.7	42,100
95	53.1	128.2	38,900
100	50.7	124.2	36,100
105	48.2	120.0	33,600
110	45.6	115.3	31,300
115	42.8	110.1	29,300
120	39.9	104.5	27,400
125	36.9	98.2	25,700
130	33.6	91.1	24,100
135	29.9	83.0	22,600
140	25.8	73.5	21,300
145	21.0	62.0	20,000



Liftcrane Boom Capacities

Boom No. 82LR
149,600 Lb. Counterweight
360 Degree Rating

Meets
ANSI B30.5
 Requirements



999 SERIES 1

Oper. Rad. Feet	Boom Ang. Deg.	Boom Point Elev. Feet	Boom Capacity Pounds
160 Ft. Boom			
30	81.0	166.2	202,200
32	80.3	165.9	182,700
34	79.6	165.5	166,500
36	78.8	165.1	152,800
38	78.1	164.7	141,100
40	77.4	164.3	130,900
42	76.6	163.8	122,000
44	75.9	163.3	114,100
46	75.2	162.8	107,100
48	74.4	162.3	100,800
50	73.7	161.7	95,200
55	71.8	160.1	83,300
60	69.9	158.4	73,800
65	68.0	156.5	66,000
70	66.0	154.4	59,500
75	64.1	152.0	54,000
80	62.0	149.5	49,300
85	60.0	146.7	45,200
90	57.9	143.7	41,600
95	55.8	140.4	38,500
100	53.6	136.9	35,600
105	51.3	133.1	33,100
110	49.0	128.9	30,800
115	46.6	124.3	28,800
120	44.0	119.4	26,900
125	41.4	114.0	25,200
130	38.6	108.0	23,600
135	35.7	101.4	22,200
140	32.5	94.0	20,800
145	29.0	85.6	19,600
150	25.0	75.8	18,400
155	20.4	63.8	17,300

Oper. Rad. Feet	Boom Ang. Deg.	Boom Point Elev. Feet	Boom Capacity Pounds
170 Ft. Boom			
32	80.9	176.0	182,600
34	80.2	175.7	166,400
36	79.5	175.3	152,600
38	78.8	174.9	140,900
40	78.1	174.5	130,700
42	77.4	174.1	121,700
44	76.7	173.6	113,900
46	76.0	173.1	106,900
48	75.3	172.6	100,600
50	74.7	172.1	95,000
55	72.9	170.6	83,100
60	71.1	169.0	73,500
65	69.3	167.2	65,700
70	67.5	165.2	59,200
75	65.7	163.1	53,700
80	63.8	160.7	49,000
85	61.9	158.2	44,900
90	60.0	155.4	41,300
95	58.0	152.4	38,200
100	56.0	149.1	35,400
105	54.0	145.6	32,800
110	51.9	141.8	30,600
115	49.7	137.8	28,500
120	47.4	133.4	26,600
125	45.1	128.6	24,900
130	42.7	123.4	23,300
135	40.1	117.7	21,900
140	37.4	111.5	20,500
145	34.6	104.6	19,300
150	31.5	96.9	18,100
155	28.1	88.2	17,100
160	24.2	78.0	16,000
165	19.7	65.6	15,100

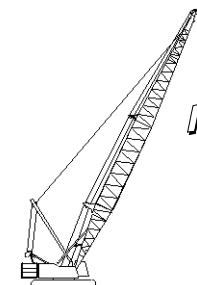
Oper. Rad. Feet	Boom Ang. Deg.	Boom Point Elev. Feet	Boom Capacity Pounds
180 Ft. Boom			
34	80.7	185.8	166,200
36	80.1	185.5	152,500
38	79.4	185.1	140,700
40	78.8	184.7	130,500
42	78.1	184.3	121,500
44	77.5	183.9	113,600
46	76.8	183.4	106,600
48	76.2	182.9	100,400
50	75.5	182.4	94,700
55	73.9	181.1	82,800
60	72.2	179.5	73,300
65	70.5	177.9	65,500
70	68.8	176.0	58,900
75	67.1	174.0	53,400
80	65.4	171.8	48,700
85	63.6	169.4	44,600
90	61.8	166.8	41,000
95	60.0	164.0	37,900
100	58.1	161.0	35,000
105	56.3	157.8	32,500
110	54.3	154.4	30,300
115	52.3	150.6	28,200
120	50.3	146.6	26,300
125	48.2	142.3	24,600
130	46.0	137.7	23,000
135	43.8	132.7	21,600
140	41.4	127.2	20,200
145	38.9	121.3	19,000
150	36.3	114.8	17,800
155	33.6	107.7	16,800
160	30.6	99.7	15,800
165	27.3	90.6	14,800
170	23.6	80.1	13,900
175	19.2	67.3	13,000



Liftcrane Boom Capacities

Boom No. 82LR
149,600 Lb. Counterweight
360 Degree Rating

**Meets
 ANSI B30.5
 Requirements**



999 SERIES 1

Oper. Rad. Feet	Boom Ang. Deg.	Boom Point Elev. Feet	Boom Capacity Pounds
190 Ft. Boom			
36	80.6	195.6	152,300
38	80.0	195.3	140,500
40	79.4	194.9	130,300
42	78.8	194.5	121,300
44	78.2	194.1	113,400
46	77.5	193.7	106,400
48	76.9	193.2	100,100
50	76.3	192.7	94,500
55	74.7	191.5	82,600
60	73.2	190.0	73,000
65	71.6	188.4	65,200
70	70.0	186.7	58,700
75	68.4	184.8	53,200
80	66.8	182.7	48,400
85	65.1	180.5	44,300
90	63.4	178.1	40,700
95	61.7	175.5	37,600
100	60.0	172.7	34,800
105	58.2	169.7	32,200
110	56.5	166.5	30,000
115	54.6	163.1	27,900
120	52.8	159.4	26,000
125	50.8	155.5	24,300
130	48.9	151.2	22,700
135	46.8	146.7	21,300
140	44.7	141.8	20,000
145	42.5	136.6	18,700
150	40.3	130.9	17,600
155	37.9	124.8	16,500
160	35.3	118.0	15,500
165	32.6	110.6	14,500
170	29.7	102.4	13,600
175	26.5	93.0	12,800
180	22.9	82.1	12,000
185	18.7	69.0	11,200

Oper. Rad. Feet	Boom Ang. Deg.	Boom Point Elev. Feet	Boom Capacity Pounds
200 Ft. Boom			
38	80.5	205.4	140,200
40	79.9	205.1	130,000
42	79.3	204.7	121,000
44	78.8	204.3	113,100
46	78.2	203.9	106,100
48	77.6	203.5	99,800
50	77.0	203.0	94,100
55	75.5	201.8	82,100
60	74.0	200.4	72,600
65	72.5	198.9	64,700
70	71.0	197.3	58,200
75	69.5	195.5	52,700
80	68.0	193.6	47,900
85	66.4	191.5	43,800
90	64.8	189.2	40,200
95	63.3	186.8	37,100
100	61.6	184.1	34,200
105	60.0	181.4	31,700
110	58.3	178.4	29,400
115	56.6	175.2	27,400
120	54.9	171.8	25,500
125	53.1	168.2	23,800
130	51.3	164.3	22,200
135	49.5	160.1	20,800
140	47.5	155.7	19,400
145	45.6	151.0	18,200
150	43.5	145.9	17,000
155	41.4	140.4	16,000
160	39.2	134.5	14,900
165	36.9	128.2	14,000
170	34.4	121.2	13,100
175	31.8	113.5	12,300
180	29.0	105.0	11,500
185	25.8	95.3	10,700
190	22.3	84.1	10,000
195	18.2	70.6	9,300

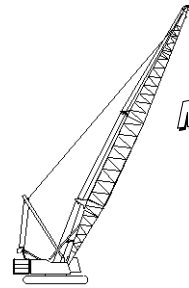
Oper. Rad. Feet	Boom Ang. Deg.	Boom Point Elev. Feet	Boom Capacity Pounds
210 Ft. Boom			
38	81.0	215.5	139,900
40	80.4	215.2	129,700
42	79.9	214.9	120,700
44	79.3	214.5	112,800
46	78.7	214.1	105,800
48	78.2	213.7	99,500
50	77.6	213.3	93,800
55	76.2	212.1	81,800
60	74.8	210.8	72,200
65	73.4	209.4	64,400
70	72.0	207.8	57,900
75	70.5	206.1	52,300
80	69.1	204.3	47,600
85	67.6	202.3	43,500
90	66.1	200.2	39,900
95	64.6	197.9	36,700
100	63.1	195.4	33,900
105	61.6	192.8	31,400
110	60.0	190.0	29,100
115	58.4	187.0	27,000
120	56.8	183.9	25,100
125	55.2	180.5	23,400
130	53.5	176.9	21,900
135	51.8	173.1	20,400
140	50.0	169.0	19,100
145	48.2	164.7	17,800
150	46.3	160.1	16,700
155	44.4	155.1	15,600
160	42.4	149.8	14,600
165	40.4	144.2	13,600
170	38.2	138.1	12,800
175	36.0	131.4	11,900
180	33.6	124.2	11,100
185	31.0	116.3	10,400
190	28.2	107.5	9,700
195	25.2	97.6	9,000
200	21.8	86.1	8,400
205	17.8	72.2	7,700



Liftcrane Boom Capacities

Boom No. 82LR
149,600 Lb. Counterweight
360 Degree Rating

Meets
ANSI B30.5
Requirements



999 SERIES 1

Oper. Rad. Feet	Boom Ang. Deg.	Boom Point Elev. Feet	Boom Capacity Pounds
220 Ft. Boom			
40	80.8	225.4	129,400
42	80.3	225.0	120,400
44	79.8	224.7	112,500
46	79.3	224.3	105,500
48	78.7	223.9	99,200
50	78.2	223.5	93,500
55	76.9	222.4	81,500
60	75.5	221.2	71,900
65	74.2	219.8	64,100
70	72.8	218.3	57,500
75	71.4	216.7	52,000
80	70.1	215.0	47,200
85	68.7	213.1	43,100
90	67.3	211.1	39,500
95	65.9	208.9	36,300
100	64.4	206.6	33,500
105	63.0	204.1	31,000
110	61.5	201.5	28,700
115	60.0	198.7	26,600
120	58.5	195.7	24,800
125	56.9	192.5	23,100
130	55.4	189.2	21,500
135	53.8	185.6	20,000
140	52.1	181.9	18,700
145	50.5	177.9	17,400
150	48.8	173.6	16,300
155	47.0	169.1	15,200
160	45.2	164.3	14,200
165	43.3	159.1	13,300
170	41.4	153.7	12,400
175	39.4	147.8	11,600
180	37.3	141.5	10,800
185	35.1	134.6	10,000
190	32.8	127.2	9,300
195	30.3	119.1	8,700
200	27.6	110.0	8,000
205	24.6	99.8	7,400
210	21.3	88.0	6,800
215	17.3	73.7	6,300

Oper. Rad. Feet	Boom Ang. Deg.	Boom Point Elev. Feet	Boom Capacity Pounds
230 Ft. Boom			
42	80.7	235.2	120,100
44	80.2	234.8	112,200
46	79.7	234.5	105,200
48	79.2	234.1	98,800
50	78.7	233.7	93,200
55	77.4	232.7	81,200
60	76.2	231.5	71,600
65	74.9	230.2	63,700
70	73.6	228.8	57,200
75	72.3	227.2	51,600
80	71.0	225.6	46,900
85	69.6	223.8	42,800
90	68.3	221.9	39,200
95	67.0	219.8	36,000
100	65.6	217.6	33,100
105	64.2	215.3	30,600
110	62.8	212.8	28,300
115	61.4	210.1	26,300
120	60.0	207.3	24,400
125	58.6	204.4	22,700
130	57.1	201.2	21,100
135	55.6	197.9	19,700
140	54.1	194.4	18,300
145	52.5	190.6	17,100
150	50.9	186.7	15,900
155	49.3	182.5	14,800
160	47.6	178.1	13,800
165	45.9	173.4	12,900
170	44.2	168.4	12,000
175	42.3	163.1	11,200
180	40.5	157.4	10,400
185	38.5	151.3	9,700
190	36.5	144.8	9,000
195	34.3	137.8	8,300
195	34.3	137.8	8,300
200	32.0	130.1	7,700
205	29.6	121.7	7,100
210	27.0	112.4	6,500
215	24.1	102.0	5,900
220	20.8	89.9	5,400
225	17.0	75.2	4,900

Oper. Rad. Feet	Boom Ang. Deg.	Boom Point Elev. Feet	Boom Capacity Pounds
240 Ft. Boom			
44	80.6	245.0	111,900
46	80.2	244.6	104,800
48	79.7	244.3	98,500
50	79.2	243.9	92,800
55	78.0	242.9	80,800
60	76.8	241.8	71,100
65	75.5	240.5	63,300
70	74.3	239.2	56,700
75	73.0	237.7	51,200
80	71.8	236.1	46,400
85	70.5	234.4	42,300
90	69.3	232.6	38,700
95	68.0	230.6	35,500
100	66.7	228.5	32,600
105	65.4	226.3	30,100
110	64.1	224.0	27,800
115	62.7	221.5	25,700
120	61.4	218.8	23,900
125	60.0	216.0	22,100
130	58.6	213.0	20,600
135	57.2	209.9	19,100
140	55.8	206.6	17,800
145	54.3	203.1	16,500
150	52.8	199.4	15,400
155	51.3	195.5	14,300
160	49.8	191.4	13,300
165	48.2	187.0	12,400
170	46.6	182.4	11,500
175	44.9	177.6	10,600
180	43.2	172.4	9,900
185	41.4	166.9	9,100
190	39.6	161.0	8,400
195	37.7	154.8	7,700
200	35.7	148.1	7,100
205	33.6	140.8	6,500
210	31.3	133.0	5,900
215	29.0	124.3	5,400
220	26.4	114.8	4,900
225	23.6	104.1	4,400



Liftcrane Boom Capacities

**Meets
ANSI B30.5
Requirements**

**Boom No. 82LR
149,600 Lb. Counterweight
360 Degree Rating**

999 SERIES 1

Oper. Rad. Feet	Boom Ang. Deg.	Boom Point Elev. Feet	Boom Capacity Pounds
250 Ft. Boom			
44	81.0	255.1	111,500
46	80.6	254.8	104,500
48	80.1	254.4	98,100
50	79.6	254.1	92,400
55	78.5	253.1	80,400
60	77.3	252.0	70,800
65	76.1	250.8	62,900
70	74.9	249.6	56,300
75	73.7	248.2	50,800
80	72.5	246.6	46,000
85	71.3	245.0	41,900
90	70.1	243.3	38,300
95	68.9	241.4	35,100
100	67.7	239.4	32,200
105	66.4	237.3	29,700
110	65.2	235.0	27,400
115	63.9	232.7	25,300
120	62.6	230.1	23,500
125	61.3	227.5	21,700
130	60.0	224.7	20,200
135	58.7	221.7	18,700
140	57.3	218.6	17,400
145	55.9	215.3	16,100
150	54.5	211.8	15,000
155	53.1	208.2	13,900
160	51.7	204.3	12,900
165	50.2	200.2	11,900
170	48.7	196.0	11,100
175	47.2	191.5	10,200
180	45.6	186.7	9,400
185	43.9	181.6	8,700
190	42.3	176.3	8,000
195	40.5	170.6	7,300
200	38.7	164.6	6,700
205	36.9	158.2	6,100
210	34.9	151.2	5,500
215	32.9	143.8	5,000
220	30.7	135.7	4,500
225	28.4	126.9	4,000
260 Ft. Boom			
46	80.9	264.9	103,700 *
48	80.5	264.6	97,800
50	80.0	264.2	92,100
55	78.9	263.3	80,000
60	77.8	262.3	70,400
65	76.7	261.1	62,500
70	75.5	259.9	55,900
75	74.4	258.6	50,400
80	73.2	257.1	45,600
85	72.1	255.5	41,500

Oper. Rad. Feet	Boom Ang. Deg.	Boom Point Elev. Feet	Boom Capacity Pounds
260 Ft. Boom			
90	70.9	253.9	37,900
95	69.7	252.1	34,700
100	68.6	250.2	31,800
105	67.4	248.2	29,300
110	66.2	246.0	27,000
115	65.0	243.7	24,900
120	63.7	241.3	23,000
125	62.5	238.8	21,300
130	61.3	236.1	19,700
135	60.0	233.3	18,300
140	58.7	230.4	17,000
145	57.4	227.2	15,700
150	56.1	224.0	14,600
155	54.8	220.5	13,500
160	53.4	216.9	12,500
165	52.0	213.1	11,500
170	50.6	209.1	10,600
175	49.2	204.9	9,800
180	47.7	200.4	9,000
185	46.2	195.8	8,300
190	44.6	190.8	7,600
195	43.0	185.6	6,900
200	41.4	180.1	6,300
205	39.7	174.3	5,700
210	38.0	168.1	5,100
215	36.1	161.4	4,600
220	34.2	154.4	4,100
270 Ft. Boom			
48	80.8	274.7	94,900 *
50	80.4	274.4	91,700
55	79.3	273.5	79,700
60	78.2	272.5	70,000
65	77.2	271.4	62,100
70	76.1	270.2	55,600
75	75.0	268.9	50,000
80	73.9	267.5	45,200
85	72.8	266.0	41,100
90	71.7	264.4	37,500
95	70.5	262.7	34,300
100	69.4	260.9	31,400
105	68.3	259.0	28,900
110	67.1	256.9	26,600
115	66.0	254.7	24,500
120	64.8	252.4	22,600
125	63.6	250.0	20,900
130	62.4	247.5	19,300
135	61.2	244.8	17,900
140	60.0	242.0	16,500

Oper. Rad. Feet	Boom Ang. Deg.	Boom Point Elev. Feet	Boom Capacity Pounds
270 Ft. Boom			
145	58.8	239.0	15,300
150	57.5	235.9	14,100
155	56.3	232.7	13,100
160	55.0	229.2	12,100
165	53.7	225.6	11,100
170	52.3	221.9	10,200
175	51.0	217.9	9,400
180	49.6	213.8	8,600
185	48.2	209.4	7,900
190	46.7	204.8	7,200
195	45.3	200.0	6,500
200	43.8	194.9	5,900
205	42.2	189.5	5,300
210	40.6	183.9	4,700
215	38.9	177.9	4,200
280 Ft. Boom			
50	80.8	284.5	85,600 *
55	79.7	283.7	79,300
60	78.7	282.7	69,600
65	77.6	281.6	61,700
70	76.6	280.5	55,100
75	75.5	279.3	49,500
80	74.5	277.9	44,700
85	73.4	276.5	40,600
90	72.3	274.9	37,000
95	71.3	273.3	33,800
100	70.2	271.5	30,900
105	69.1	269.7	28,400
110	68.0	267.7	26,100
115	66.9	265.6	24,000
120	65.8	263.4	22,100
125	64.6	261.1	20,400
130	63.5	258.7	18,800
135	62.3	256.1	17,300
140	61.2	253.5	16,000
145	60.0	250.6	14,800
150	58.8	247.7	13,600
155	57.6	244.6	12,500
160	56.4	241.3	11,500
165	55.2	237.9	10,600
170	53.9	234.4	9,700
175	52.6	230.6	8,900
180	51.3	226.7	8,100
185	50.0	222.6	7,300
190	48.6	218.3	6,600
195	47.3	213.8	6,000
200	45.9	209.1	5,300
205	44.4	204.1	4,700
210	42.9	198.9	4,200