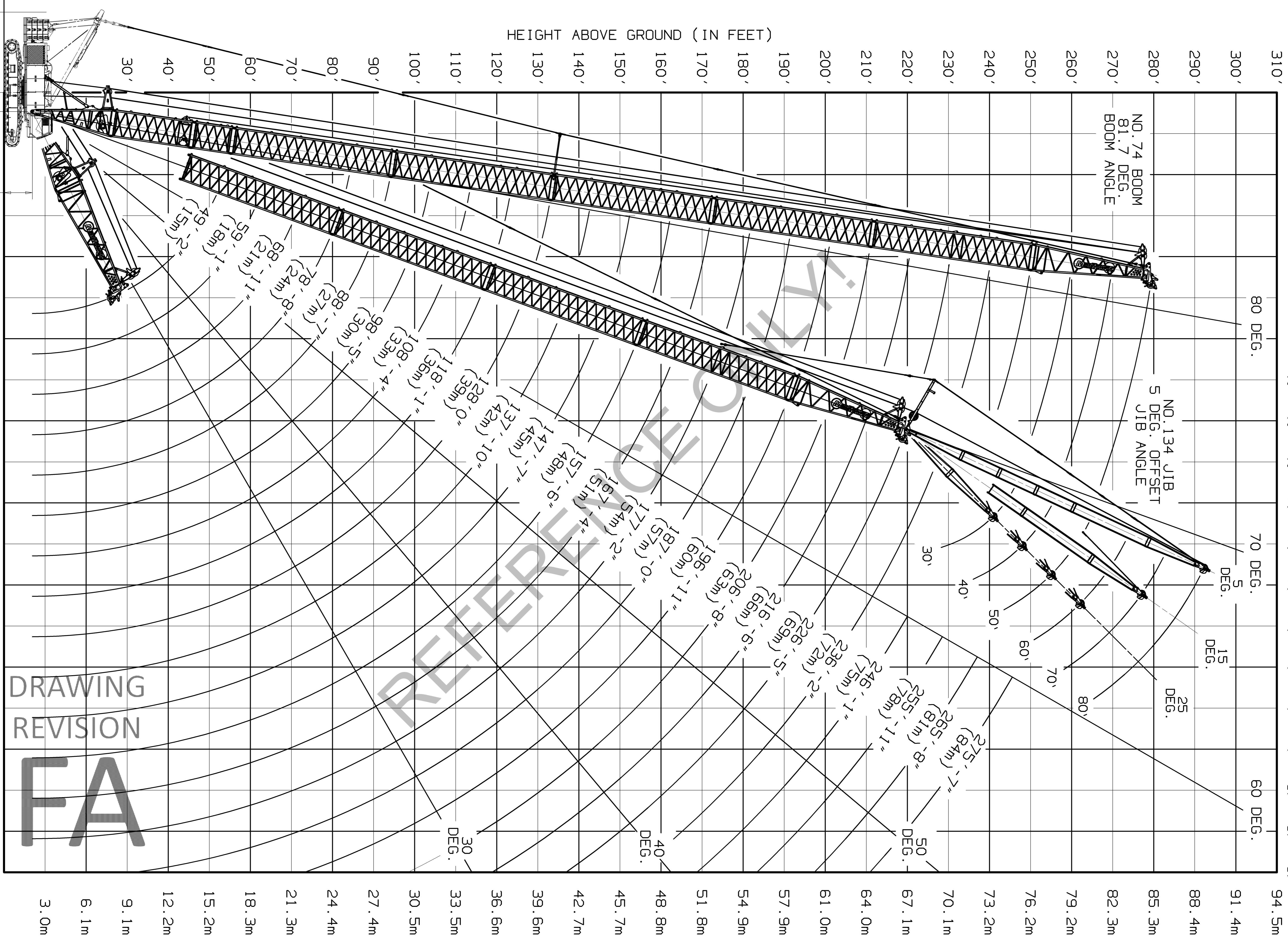


UPPER BOOM POINT
3.0m
6.1m
9.1m
12.2m
15.2m
18.3m
21.3m
24.4m
27.4m
30.5m
33.5m
36.6m
39.6m
42.7m
45.7m
48.8m
51.8m
54.9m
57.9m

DISTANCE FROM Q ROTATION (IN METERS)

HEIGHT ABOVE GROUND (IN FEET)

HEIGHT ABOVE GROUND (IN METERS)



DRAWING REVISION
FA

DATE	01-23-13	REVISED BY	MANITOWOC CRANES	REVISION
DRAWING NO.	81023478	BY	MANITOWOC HISONGSIN	
CHK'D BY	MANITOWOC HISONGSIN	MODEL	MJC165	DIAGRAM RANGE
APP'D BY				#74 BOOM & #134 JIB

REV. NO.	DESCRIPTION

SHEET 1 OF 1