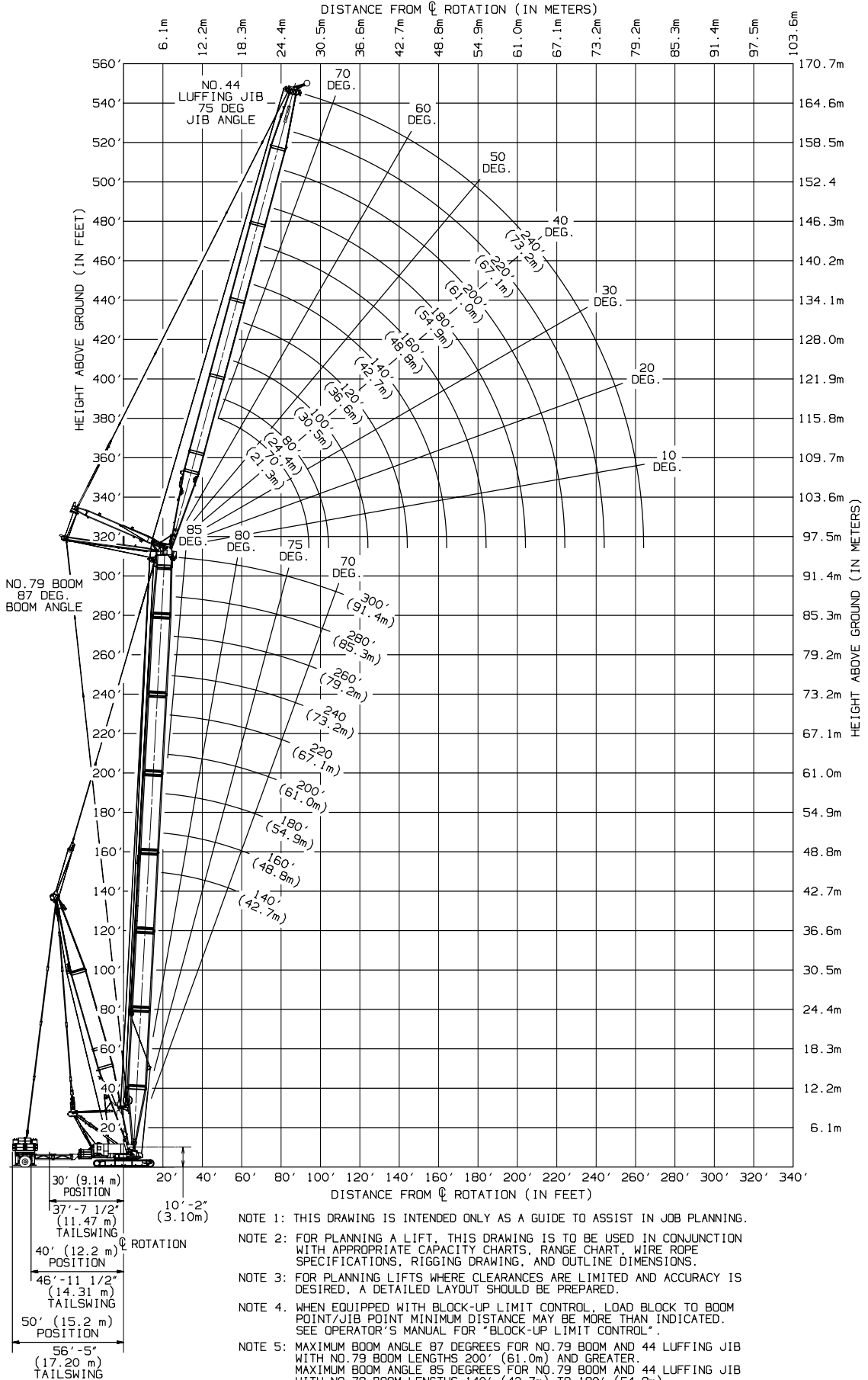


MANITOWOC CRANES, INC.



- NOTE 1: THIS DRAWING IS INTENDED ONLY AS A GUIDE TO ASSIST IN JOB PLANNING.
- NOTE 2: FOR PLANNING A LIFT, THIS DRAWING IS TO BE USED IN CONJUNCTION WITH APPROPRIATE CAPACITY CHARTS, RANGE CHART, WIRE ROPE SPECIFICATIONS, RIGGING DRAWING, AND OUTLINE DIMENSIONS.
- NOTE 3: FOR PLANNING LIFTS WHERE CLEARANCES ARE LIMITED AND ACCURACY IS DESIRED, A DETAILED LAYOUT SHOULD BE PREPARED.
- NOTE 4: WHEN EQUIPPED WITH BLOCK-UP LIMIT CONTROL, LOAD BLOCK TO BOOM POINT/JIB POINT MINIMUM DISTANCE MAY BE MORE THAN INDICATED. SEE OPERATOR'S MANUAL FOR "BLOCK-UP LIMIT CONTROL".
- NOTE 5: MAXIMUM BOOM ANGLE 87 DEGREES FOR NO.79 BOOM AND 44 LUFFING JIB WITH NO.79 BOOM LENGTHS 200' (61.0m) AND GREATER. MAXIMUM BOOM ANGLE 85 DEGREES FOR NO.79 BOOM AND 44 LUFFING JIB WITH NO.79 BOOM LENGTHS 140' (42.7m) TO 180' (54.9m).

SEE PAGE 2 FOR DETAILS

195629
06-13-00

RANGE DIAGRAM - 2250 MAX-ER 2000 (#79 BOOM & #44 LUFFING JIB)

MANITOWOC CRANES, INC.

