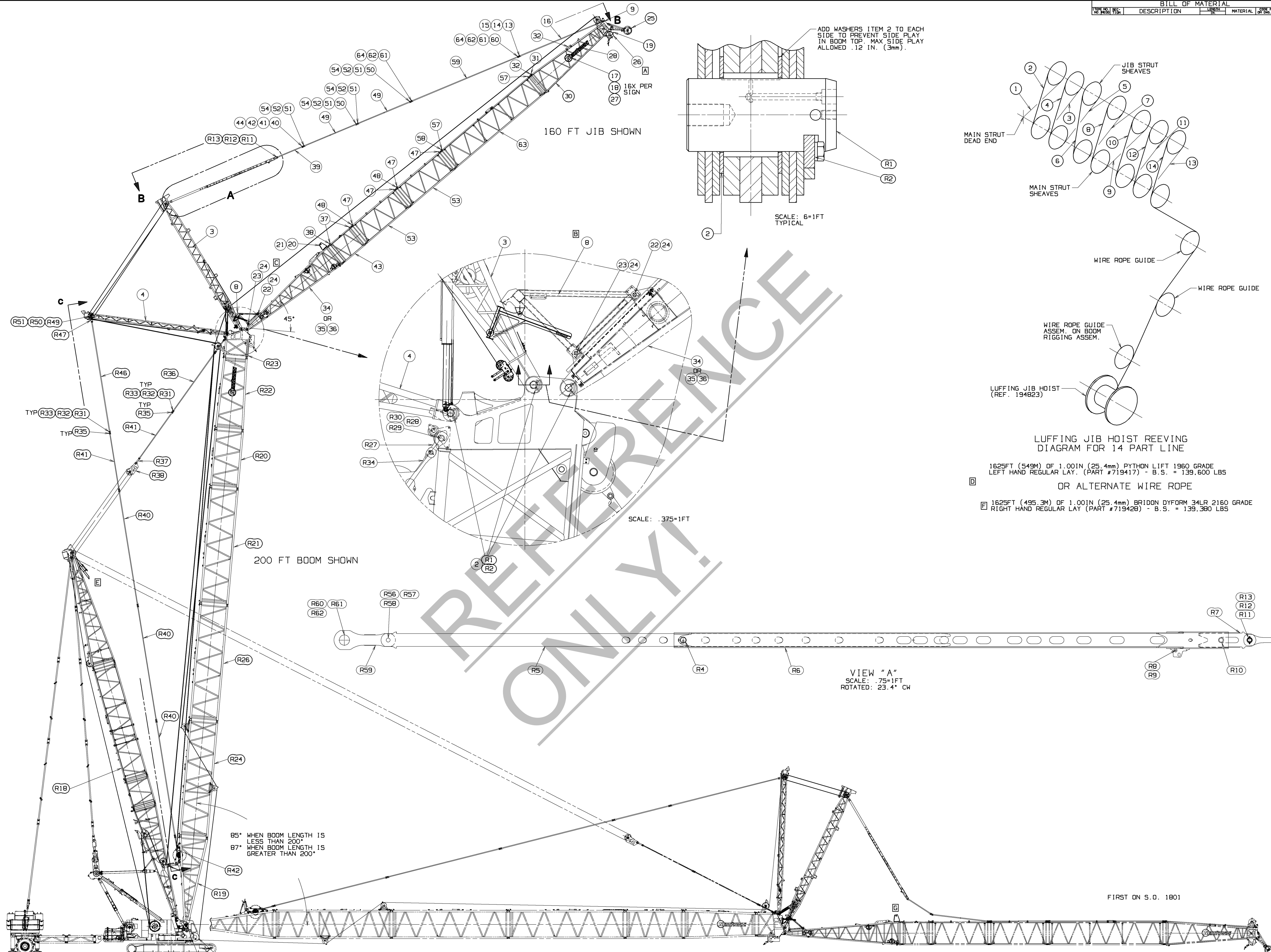


BILL OF MATERIAL		QTY	DESCRIPTION	MATERIAL	QTY	DESCRIPTION	QTY	DESCRIPTION

REV	DATE	DESCRIPTION
3-13-00	DWF	ADDED
4-17-00		UPDATED TO 417370
5-11-00		CORRECT LOAD LINE REEVING
6-12-00		1625 FT WAS 1800 FT
7-11-00		ETI UPDATED EQUALIZER FORK GEOMETRY
02-02-01	JMM	UPDATED PIC OF ITEM B PER DWG 197160
01-15-02	GAD	ETI UPDATED ITEM NUMBER 20
05-14-01	CRP	VIEWS UPDATED
06-28-01	ALL	UPDATED JIB STRUT CYL
01-15-02	GAD	ETI UPDATED
01-28-10	JAS	ADDED
01-28-10	JAS	UPDATED BOOM AND LUFFING JIB SIGNS



REVIEW ONLY!

THIS PRINT BEING THE PROPERTY OF MANITOWOC CRANES, INC. ALL INFORMATION CONTAINED THEREIN IS CONFIDENTIAL. IT IS LOANED, SUBJECT TO RETURN UPON DEMAND, AND ON EXPRESS CONDITION THAT IT IS NOT TO BE COPIED OR USED DIRECTLY OR INDIRECTLY IN ANY MANNER WHATSOEVER DETRIMENTAL TO OUR INTERESTS.		TOLERANCE UNLESS OTHERWISE SPECIFIED		SCALE: 1/8"=1'-0"		Manitowoc Cranes, Inc.	
DECIMAL PLACES	FABRICATION	MACHINING	SCALE	APP. UES	MANITOWOC, WISCONSIN	#44 LUFFING JIB	
(1) PLACE 0.0	±.12	±.18	±.03	CK. KLH	MODEL 2250 MAXER 2000	RIGGING ASSEMBLY	
(2) PLACE 0.00	±.06	±.12	±.015	APP. KLH			
(3) PLACE 0.000	±.003	±.005	±.0005				
ANGLES	±1.34	±0.30					

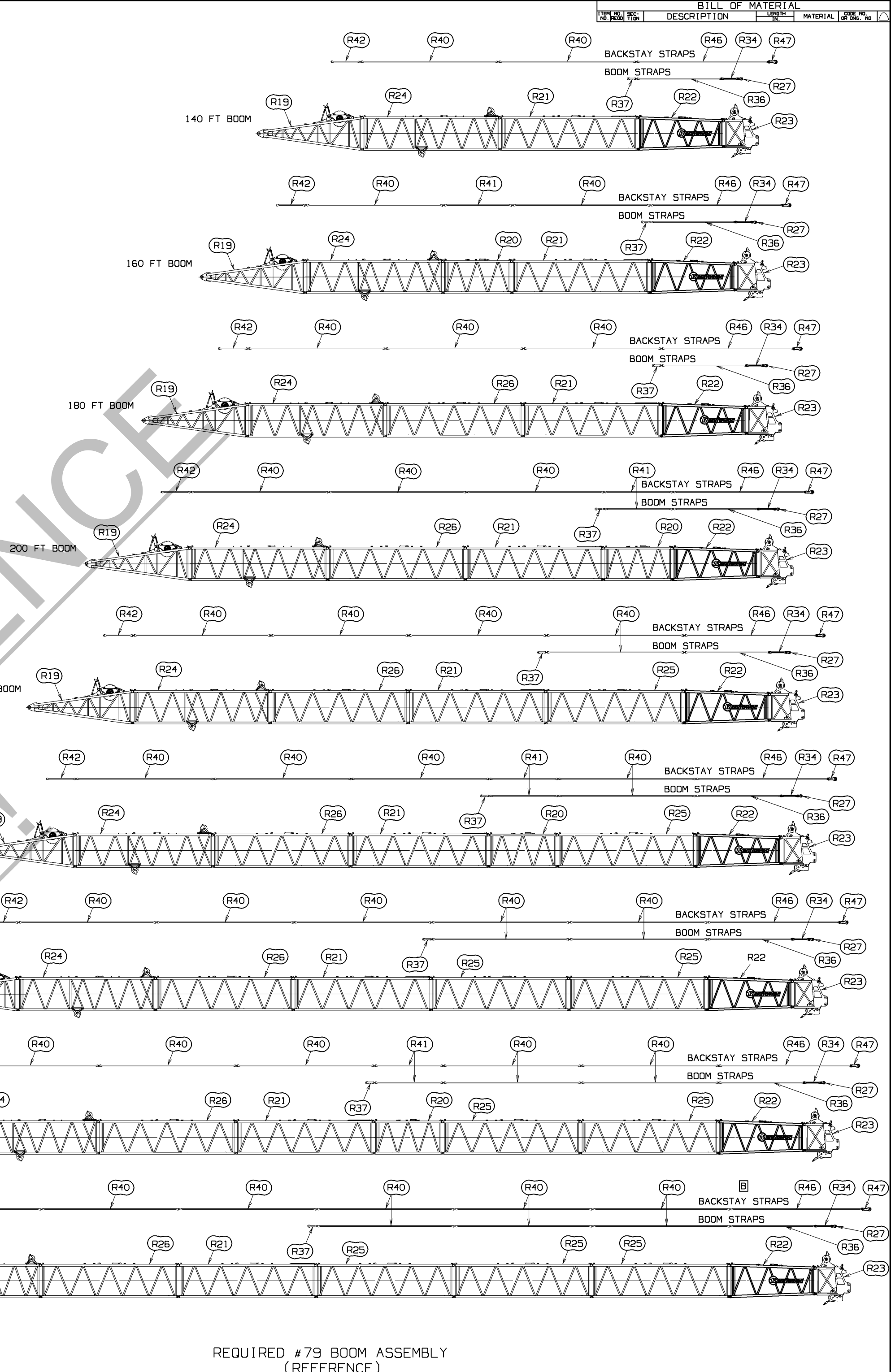
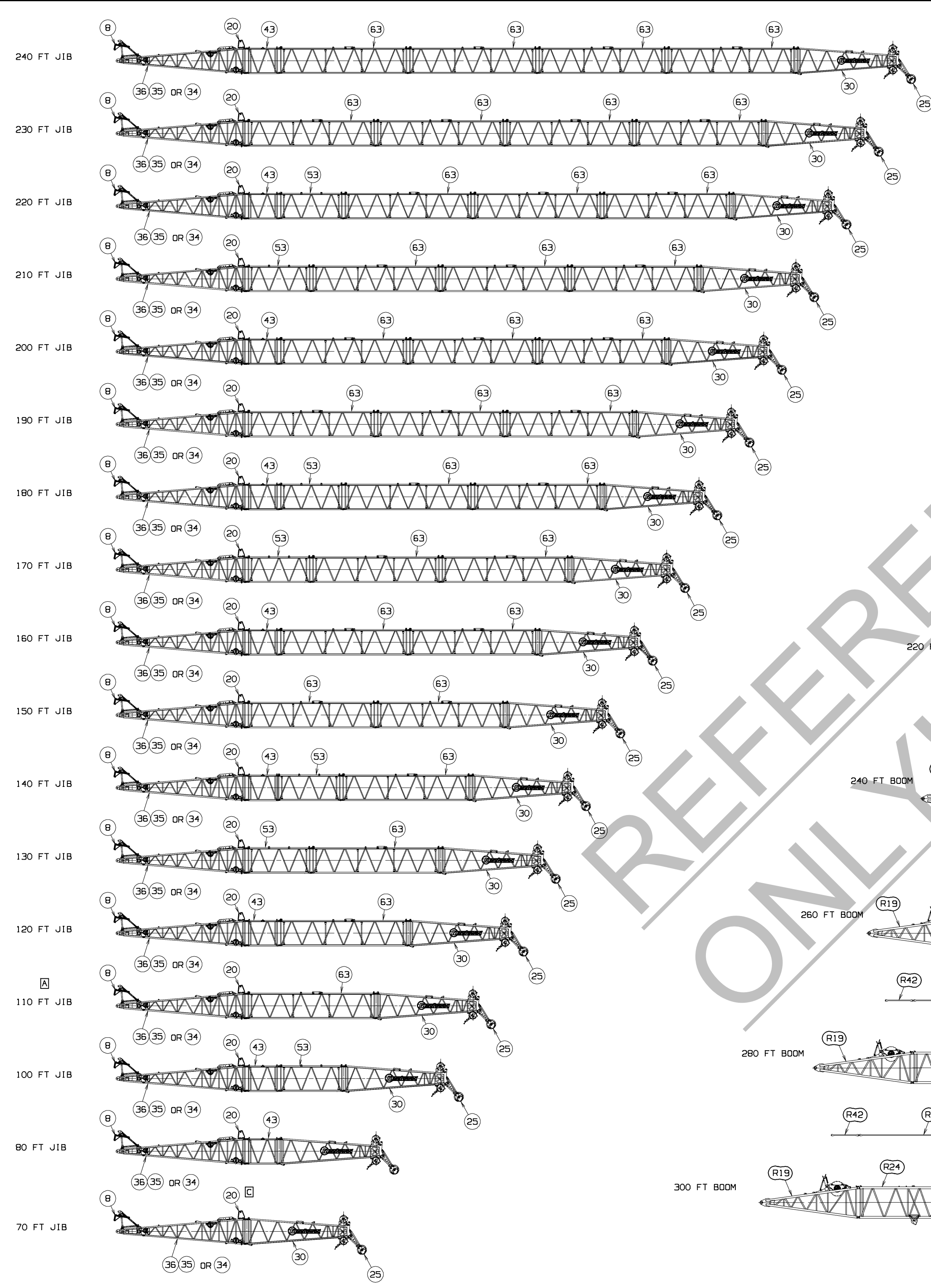
DATE: 2-11-00

PATTERN NO.:

PRIVATE LABELING REQUIREMENT TO CONFORM TO ENGINEERING SPECIFICATION 6629103794 FOR COMPONENTS LISTED IN 60500-09-026

194324

SHT. 1 OF 5



REV.	DATE	DESCRIPTION	MATERIAL	QTY	BY

REV.	DATE	DESCRIPTION

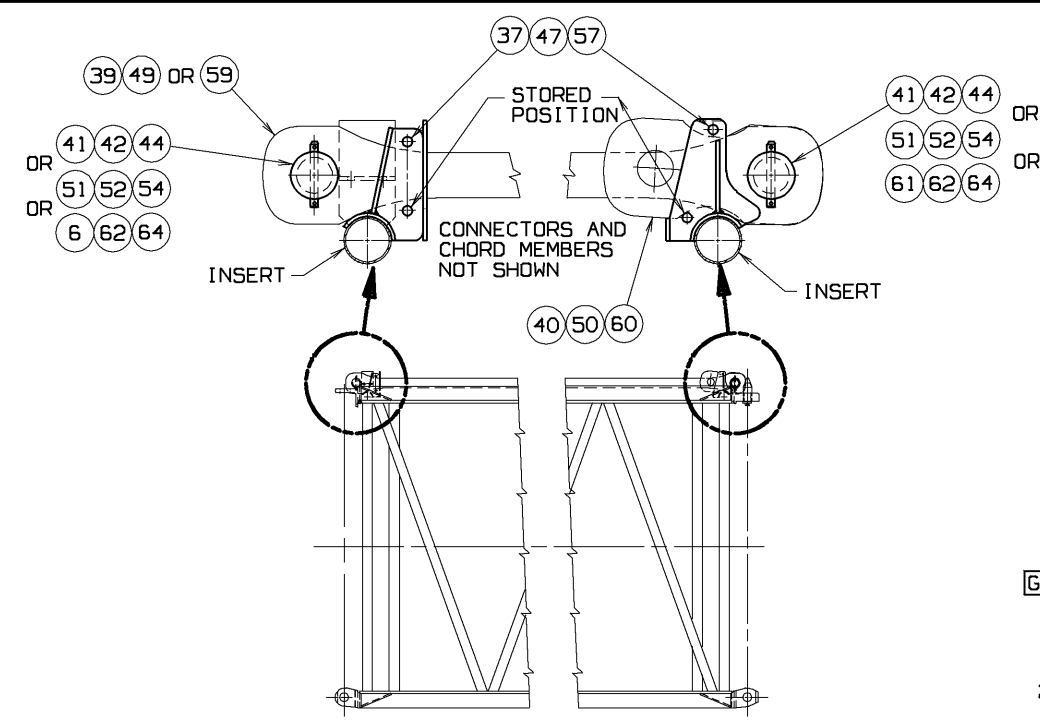
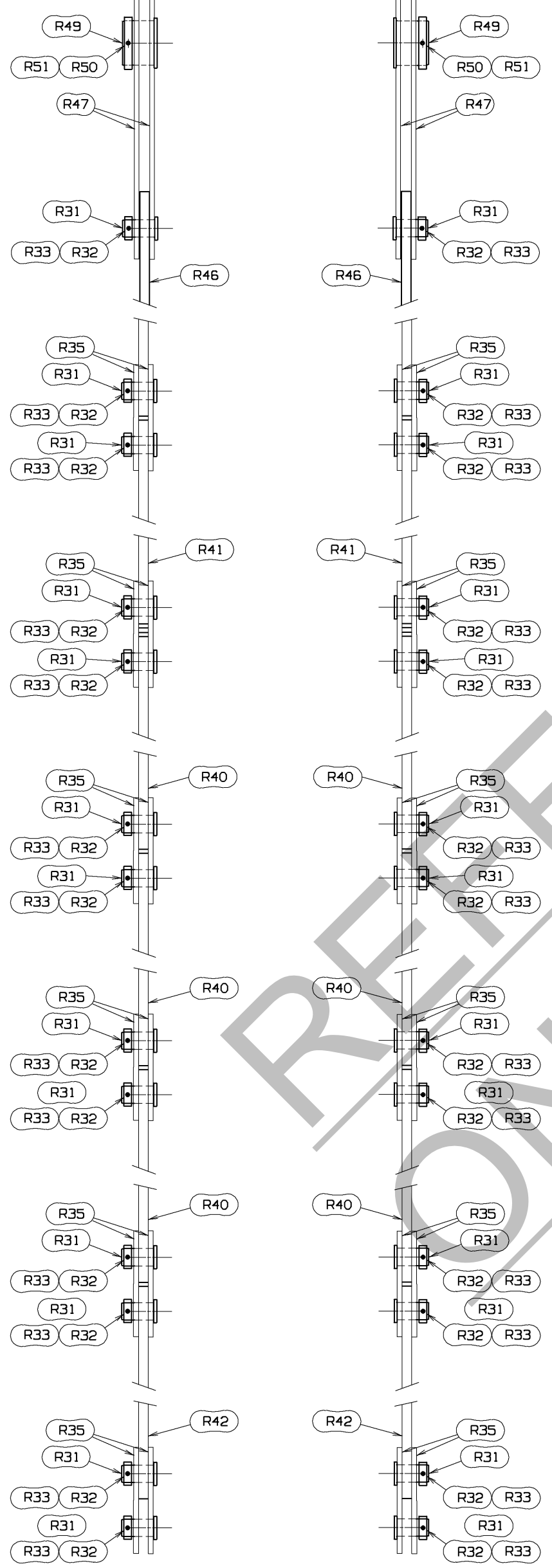
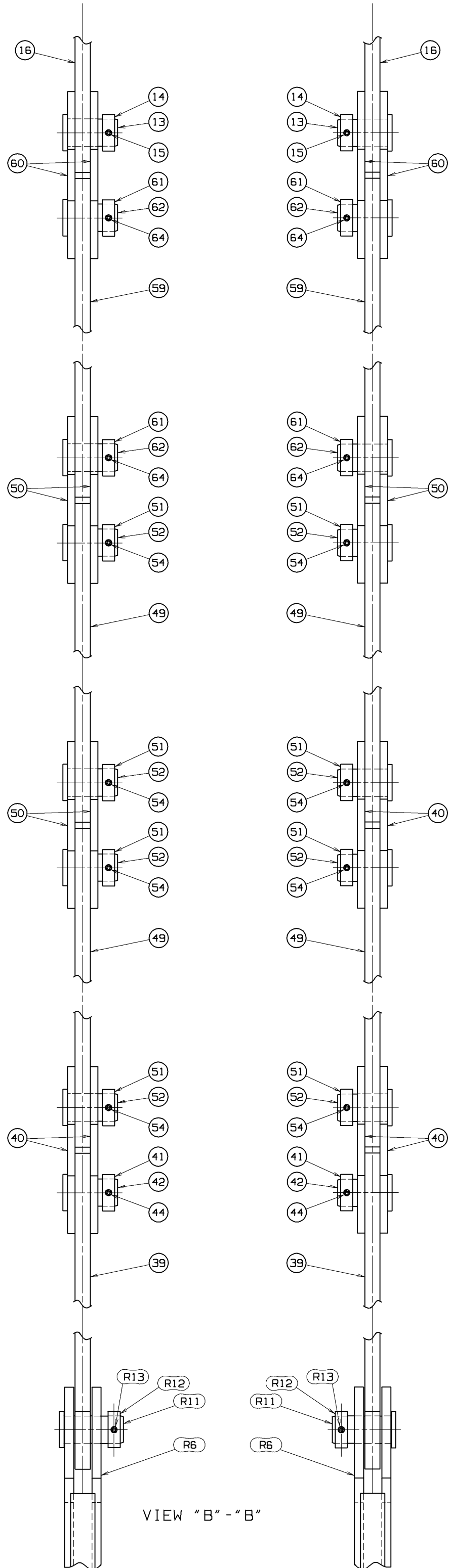
REVISIONS
 3-16-00 DWF
 ADDED JIB
 LENGTHS: 90,
 110, 130, 150,
 170, 190, 210,
 230
 ADDED BOOM
 AND BACKSTAY
 STRAP CALLOUT
 TO EACH BOOM
 LENGTH
 02-01-01 ALL
 UPDATED ITEM
 8 PER NEW
 DWG 197180
 5-14-01 CRP
 VIEWS UPDATED
 01-15-02 GAO
 01 UPDATED
 ITEM 20
 8-15-02 CRP
 VIEWS UPDATED
 01-28-10 JAS
 UPDATED BOOM
 AND LUFFING
 JIB SIGNS

REFERENCE ONLY

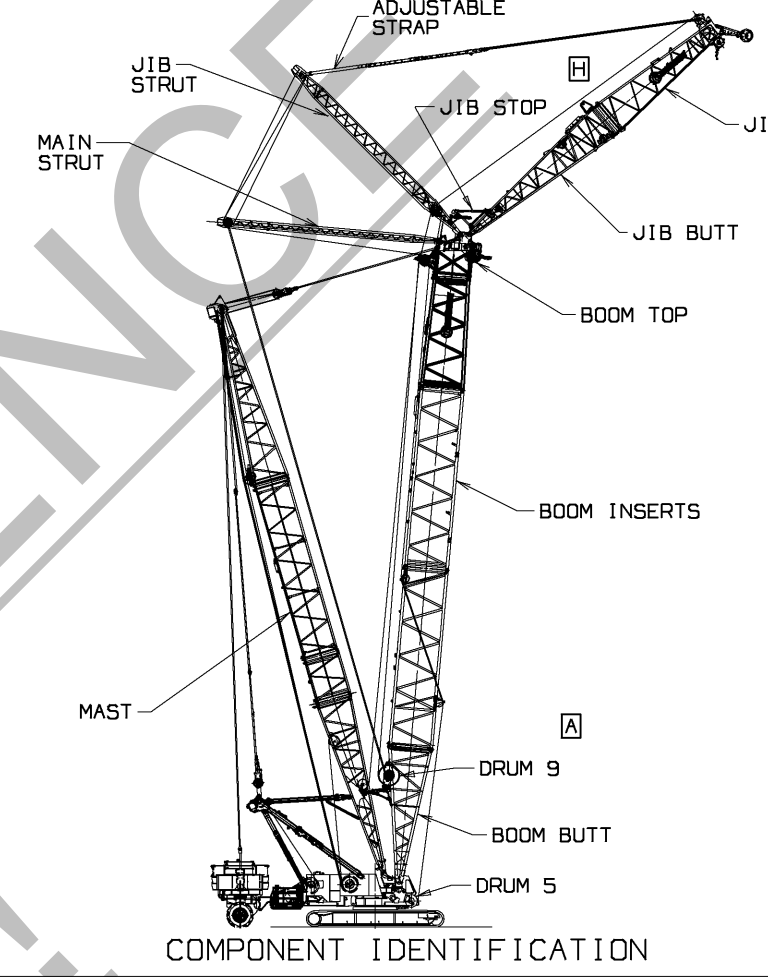
REQUIRED #79 BOOM ASSEMBLY
 (REFERENCE)

RECOMMENDED #44 LUFFING JIB ASSEMBLY
 NOTE: SEE CHART ON PG. 5 FOR ALTERNATE COMBINATIONS

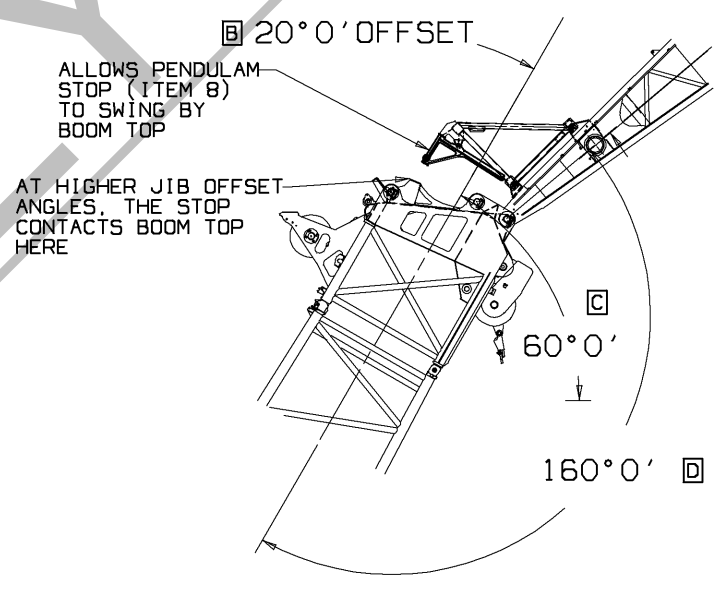
<small>THIS PRINT BEING THE PROPERTY OF MANITOWOC CRANES, INC. ALL INFORMATION CONTAINED THEREIN IS CONFIDENTIAL IT IS LOANED, SUBJECT TO RETURN UPON DEMAND, AND ON EXPRESS CONDITION THAT IT IS NOT TO BE COPIED OR USED DIRECTLY OR INDIRECTLY IN ANY MANNER DETRIMENTAL TO OUR INTERESTS.</small>	<small>TOLERANCE UNLESS OTHERWISE SPECIFIED</small> DECIMAL PLACES FABRICATION MACHINING (1) PLACE 0.0 ± .12 ± .18 ± .03 (2) PLACE 0.00 ± .06 ± .12 ± .015 (3) PLACE 0.000 ± .003 ± .005 ± .0025 ANGLES 1:20 1:50 1:100		CASE 12FT DR. UES CK. DWF APP. KLH	Manitowoc Cranes, Inc. Manitowoc, Wisconsin MODEL 2250 MAXER 2000 #44 LUFFING JIB ASSEMBLY	DATE 02-11-00 PATTERN NO. 194324
	<small>PRIVATE LABELING REQUIREMENT TO CONFORM TO ENGINEERING SPECIFICATION 6629103794 FOR COMPONENTS LISTED IN 02000-00-026</small>		DATE 02-11-00 PATTERN NO. 194324	DATE 02-11-00 PATTERN NO. 194324	
	<small>DO NOT SCALE THIS DRAWING</small>		DATE 02-11-00 PATTERN NO. 194324	DATE 02-11-00 PATTERN NO. 194324	



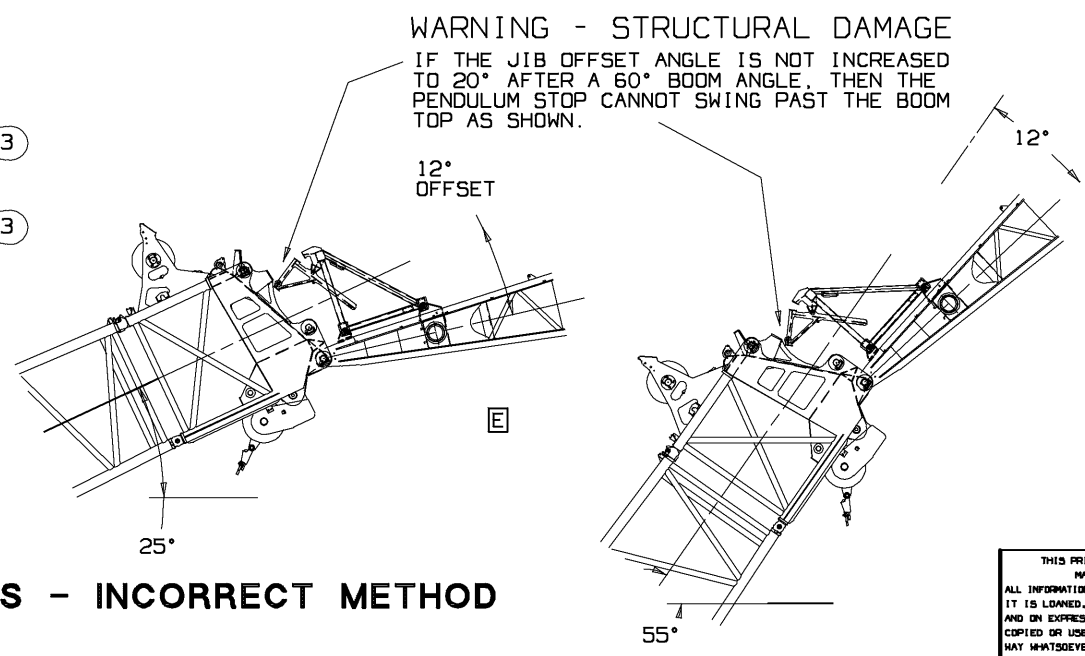
PENDANT STRAP STORAGE
(TYPICAL ON 10.20 OR
40 FT INSERT)
#44 AND #79 BOOM



COMPONENT IDENTIFICATION



VIEW R - CORRECT METHOD



VIEW S - INCORRECT METHOD

BILL OF MATERIAL				ASSEMBLIES USED ON
QTY	DESC	MATERIAL	QTY	NO.

REV	DESCRIPTION
3-14-00	DWF LABELS ADDED
5-15-02	CRP VIEWS UPDATED
01-28-10	JAS UPDATED BOOM AND JIB SIGNS

#44 JIB PREPARATION

- REMOVE BOOM STOPS (PN# 170474), RIGGING WINCH (PN# 172577), LOWER CATWALK, AND DEFLECTOR SHEAVE ASSY (PN# 192000) FROM #44 BOOM BUTT. (SEE VIEW ABOVE)
- #44 JIB BUTT MUST BE MODIFIED PER DRAWING (PN# 417345, 1 PIECE) OR (PN# 417346, 2 PIECE) TO ACCEPT JIB STOP.
- INSTALL JIB STOP ASSY (ITEM #8) ON #44 BUTT AS SHOWN. MOVE "HANDLING" PIN (ITEM 6) TO STORED POSITION ONCE STOP IS PINNED TO BUTT. (SEE VIEW T)
- ADD JIB STRUT REST ASSY (ITEM #20) TO #44 BUTT AS SHOWN.
- ADD #44 UPPER POINT ROLLER ASSY (ITEM #25) TO #44 TOP.

STRUT RAISING PROCEDURE - (SEE SHEET 4) (SEE COMPONENT IDENTIFICATION)

- LIFT MAIN STRUT AND JIB STRUT AS SHOWN IN VIEW "D". PIN JIB STRUT TO THE #79 BOOM TOP. VIEW "E" REST THE OTHER END ON THE STRUT REST (ITEM #20) LOCATED ON THE #44 BUTT.
- REMOVE AND STOW THE LATCH PIN (ITEM #7). LIFT THE LOWER END OF THE MAIN STRUT. SLIGHTLY SLIDE THE MAIN STRUT ABOUT AN INCH TOWARD THE JIB TOP TO RELEASE IT FROM HOOK SHARD LATCH AT THE LOWER END OF THE STRUTS. AND THEN PIN THE MAIN STRUT TO THE BOOM TOP AT ITS HINGE PIN. SEE VIEW "F".
NOTE: IF A SUCKER LINE IS REEVED FOR THE JIB LUFFING SYSTEM THERE NEEDS TO BE ENOUGH SLACK IN THE SUCKER LINE TO ALLOW MOVING THE MAIN STRUT FROM IT'S SHIPPING AND HANDLING POSITION TO THE POSITION WHERE THE HINGE PIN IS INSERTED.
NOTE: REAR 2 LEGS OF RIGGING CAN BE USED TO PIN MAIN STRUT (SEE VIEW F).
- REEVE THE JIB LUFFING LINE AS SHOWN IN JIB LUFFING REEVING DIAGRAM.
- REMOVE AND STOW THE SHIPPING PINS (ITEM R45) THAT RETAIN THE STRAPS ON THE MAIN STRUT. ATTACH TAG LINES TO STRAPS.
- REFER TO VIEW 6. ATTACH ASSIST CRANE TO ONE OF THE ERECTION PENDANTS (R48). ATTACH LOAD LINE FROM DRUM 9 TO THE OTHER ERECTION PENDANT (R49). DO NOT USE WIRE ROPE GUIDE. WHILE PAYING OUT ON LUFFING ROPE (DRUM 5), USE ASSIST CRANE TO RAISE THE MAIN STRUT TO APPROX. 45 DEG. (KEEP LINE FROM DRUM 9 SLACK). TIGHTEN LOAD LINE FROM DRUM 9 UNTIL IT IS HOLDING UP THE MAIN STRUT. LOWER ASSIST CRANE AND DETACH ERECTION PENDANT. HOIST IN ON DRUM 9 WHILE HOISTING OUT ON LUFFING LINE (DRUM 5) TO CONTINUE TO RAISE MAIN STRUT. AS STRUT NEARS VERTICAL, ENSURE LUFFING LINE IS TIGHT AND JIB STRUT IS RESTING ON THE JIB BUTT. USE LUFFING LINE (DRUM 5) TO LOWER MAIN STRUT PAST VERTICAL UNTIL IT RESTS AGAINST STOP ON BOOM TOP. USE TAG LINES TO PREVENT STRAPS FROM HITTING BOOM LACINGS. CONNECT JIB BACKSTAY STRAPS, AND DISCONNECT LINE FROM DRUM 9.
- CONNECT ALL HYDRAULIC HOSES, START CRANE, AND ENSURE CYLINDERS ARE FULLY EXTENDED. SEE VIEW "G". CHECK RESERVOIR: CAPACITY SHOULD BE EMPTY. (REFER TO 195012 FOR HYDRAULIC ASSEMBLY)
- PRE-SELECT THE LENGTH OF THE ADJUSTABLE JIB STRAP BY PLACING THE PIN (ITEM #R4) IN THE APPROPRIATE HOLES IN THE STRIP, DEPENDING ON THE JIB LENGTH. SEE VIEW "P".
ENSURE THAT R4 IS IN NARROW SIDE OF SLOT AND THE PLUNGER IS HOLDING IT THERE. SEE VIEW "P".

IMPORTANT - STRUCTURAL DAMAGE

- FAILURE TO HAVE PIN (ITEM #R4) IN THE APPROPRIATE HOLE FOR CORRESPONDING JIB LENGTH WILL RESULT IN STRUCTURAL DAMAGE AND POSSIBLE COLLAPSE OF CRANE.
- ENSURE THAT THE PIN (ITEM #R8 & R9) IS IN ERECTION POSITION, TO PREVENT EXTENSION OF THE ADJUSTABLE STRAP. SEE VIEW "J".
 - ENSURE THAT CABLES FROM THE HAND WINCHES ARE ATTACHED TO THE ADJUSTABLE STRAP. THAT THE LINES ARE SNUG AND THE PATCHES ARE SET TO RESTRAIN THE WINCHES FROM PAYING OUT LINE. THEN REMOVE THE PINS (ITEM R55) THAT LOCK THE ADJUSTABLE STRAPS INTO THEIR STORAGE POSITIONS ON THE BELLY OF THE JIB STRUT. SEE VIEW "J".
IMPORTANT: MAKE SURE THERE IS NO LOAD ON THESE PINS PRIOR TO REMOVAL.
 - USE THE JIB LUFFING LINE (DRUM 5) TO PULL THE MAIN STRUT FORWARD UNTIL THE BACKSTAY STRAPS ARE TAUNT ENOUGH TO RAISE THE JIB STRUT. SEE VIEW "H". CONTINUE TO IN HAUL ON THE JIB LUFFING LINE (DRUM 5) TO SLOWLY RAISE THE JIB STRUT TO THE ANGLE OF APPROXIMATELY 45 DEG. DURING THIS PROCESS, ENSURE THAT THE CYLINDERS CONTACT THE STOP PINS ON THE BOOM TOP CORRECTLY. SEE VIEW K.
 - LOWER THE ADJUSTABLE STRAPS BY PAYING OUT CABLE FROM HAND WINCHES. CONNECT THE ADJUSTABLE STRAPS TO THE JIB STRAPS RESTING ON THE #44 INSERTS AS SHOWN IN VIEW "L".
 - LOWER THE JIB STRUT UNTIL THE ADJUSTABLE LINKS ARE FULLY RETRACTED. AT THIS POSITION REMOVE THE SMALL RETAINER PINS (ITEM #R8 & R9); AND PLACE IN STORAGE POSITION.
THERE SHOULD BE NO LOAD ON R8 & R9 AT THIS POSITION. SEE VIEW "M". ALSO DETACH CABLES FROM HAND WINCH.

WARNING - STRUCTURAL DAMAGE WILL OCCUR IF R8 & R9 ARE NOT PLACED IN STORAGE.

- IN HAUL ON THE LUFFING LINE (DRUM 5) TO RAISE THE JIB STRUT AS NEEDED TO RAISE JIB, DEPENDING ON METHOD OF RAISING (IN-LINE OR JACK KNIFE). SEE VIEW "N"

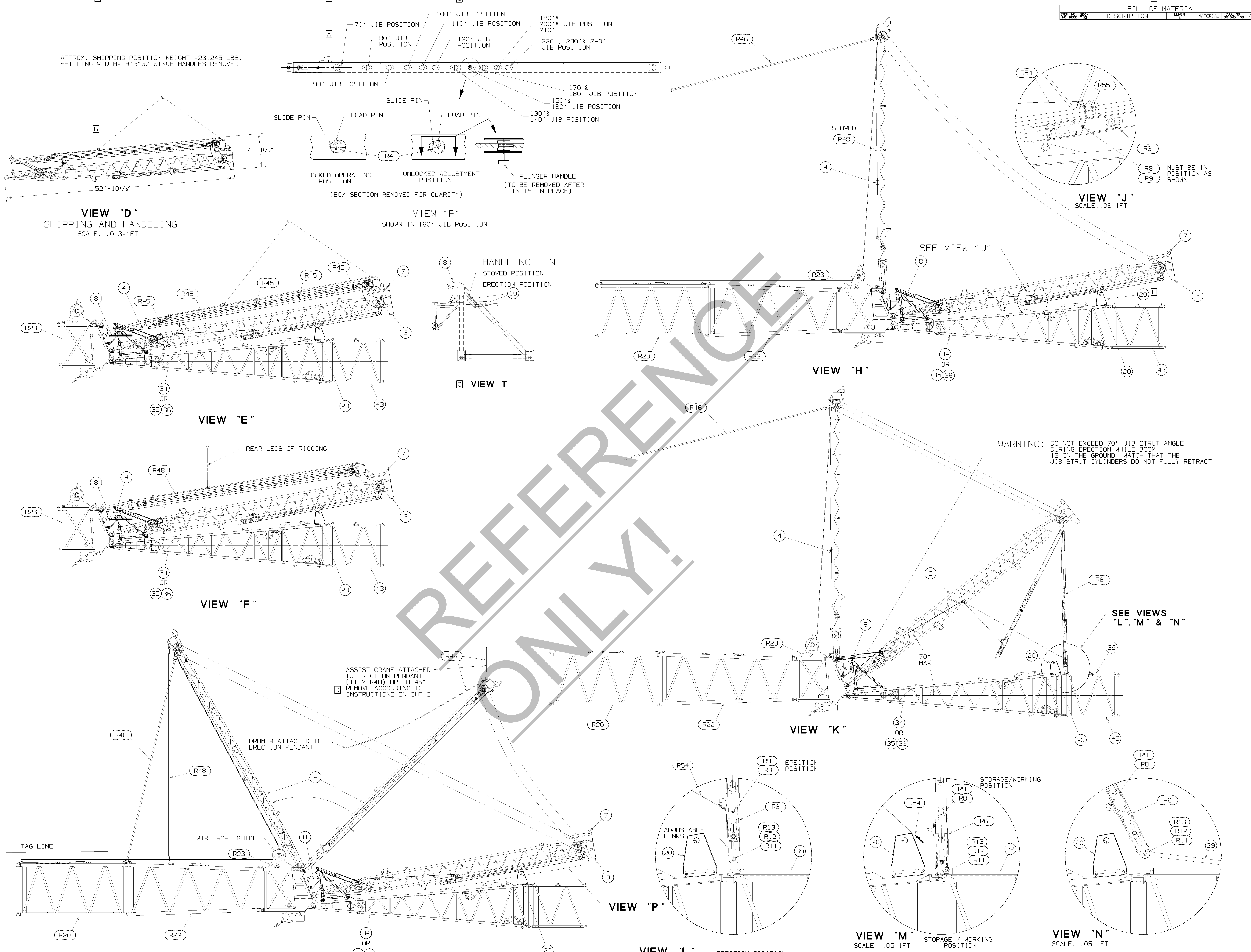
WARNING - IF USING IN-LINE METHOD FOR RAISING JIB, DO NOT RAISE JIB STRUT MORE THAN 65 DEG. AT 72 DEG. THE HYDRAULIC CYLINDER WILL BOTTOM OUT, AND ANY FURTHER ATTEMPT TO RAISE STRUT WILL CAUSE STRUCTURAL DAMAGE.

JIB RAISING PROCEDURE

- REFER TO ERECTION FOLIO AND LOAD CHART FOR INSTRUCTIONS ON IN-LINE OR JACK-KNIFE METHODS.
- IMPORTANT: THIS LUFFING JIB IS EQUIPPED WITH A PENDULAM TYPE JIB STOP.
- IN ORDER FOR THE JIB STOP TO ENGAGE AS THE BOOM IS BEING RAISED IT IS NECESSARY TO INCREASE THE OFFSET BETWEEN BOOM ANGLE AND JIB ANGLE TO MORE THAN 20 DEG AT LEAST ONE TIME AFTER THE BOOM HAS BEEN RAISED TO A BOOM ANGLE GREATER THAN 60 DEG. SEE VIEW R AND S
 - IN ORDER FOR THIS JIB STOP TO DISENGAGE AS THE BOOM IS BEING LOWERED IT IS NECESSARY TO INCREASE THE JIB OFFSET TO MORE THAN 20 DEG AT LEAST ONE TIME AFTER THE BOOM HAS BEEN LOWERED TO A BOOM ANGLE OF LESS THAN 20 DEG. SEE VIEW R AND S.
- FAILURE TO DO THESE STEPS WILL RESULT IN STRUCTURAL DAMAGE.

THIS PRINT BEING THE PROPERTY OF MANITOWOC CRANES, INC. IT IS LOANED, SUBJECT TO RETURN WITHIN 30 DAYS. ALL INFORMATION CONTAINED HEREIN IS CONFIDENTIAL AND IS NOT TO BE REPRODUCED OR USED DIRECTLY OR INDIRECTLY IN ANY MANNER WITHOUT THE WRITTEN PERMISSION OF MANITOWOC CRANES, INC.		TOLERANCE UNLESS OTHERWISE SPECIFIED		SCALE 3/16" = 1'		MANITOWOC Cranes, Inc.	
DECIMAL PLACES	FRACTIONS	ANGLES	FINISHING	DR. UES	MANITOWOC, Wisconsin	#44 LUFFING JIB ASSEMBLY	
(1) PLACE 0.00	1/32	1/16	1/16	DR. KLH	MODEL 2250 MAXER 2000	DATE 2-11-00	
(2) PLACE 0.00	1/64	1/32	1/16	APP. KLH		PATTERN NO.	
(3) PLACE 0.000	1/128	1/64	1/16			194324	
						SHT. 3 OF 5	

APPROX. SHIPPING POSITION WEIGHT = 23,245 LBS.
SHIPPING WIDTH = 8' 3" W/ WINCH HANDLES REMOVED



BILL OF MATERIAL				ASSEMBLIES USED IN
ITEM NO.	QTY	DESCRIPTION	MATERIAL	CODE NO.

REVISIONS	
3-14-00	DWF POSITIONS ADDED
3-14-00	ROTATED 5°
3-30-01	ALL UPDATED JIB STOP
3-30-01	OF ITEM 20
5-14-01	CRP VIEWS UPDATED
06-28-01	ALL UPDATE PIC OF ITEM 3
01-15-02	GAD UPDATE ITEM 20.

VIEW "J"
SCALE: .06=1FT

VIEW "D"
SHIPPING AND HANDLING
SCALE: .013=1FT

VIEW "P"
SHOWN IN 160' JIB POSITION

VIEW "E"

VIEW "T"

VIEW "H"

VIEW "F"

VIEW "K"

VIEW "G"

VIEW "L"
SCALE: .05=1FT

VIEW "M"
SCALE: .05=1FT

VIEW "N"
SCALE: .05=1FT

WARNING: DO NOT EXCEED 70° JIB STRUT ANGLE DURING ERECTION WHILE BOOM IS ON THE GROUND. WATCH THAT THE JIB STRUT CYLINDERS DO NOT FULLY RETRACT.

ASSIST CRANE ATTACHED TO ERECTION PENDANT (ITEM R48) UP TO 45° REMOVE ACCORDING TO INSTRUCTIONS ON SHT 3.

DRUM 9 ATTACHED TO ERECTION PENDANT

TAG LINE

WIRE ROPE GUIDE

REAR LEGS OF RIGGING

LOCKED OPERATING POSITION

UNLOCKED ADJUSTMENT POSITION

PLUNGER HANDLE (TO BE REMOVED AFTER PIN IS IN PLACE)

HANDLING PIN
STOWED POSITION
ERECTION POSITION

SEE VIEWS "L", "M" & "N"

TOLERANCE UNLESS OTHERWISE SPECIFIED		MACHINING		WELDING		DRAWING	
DECIMAL PLACES	FABRICATION	10 FEET	10 FEET	10 FEET	10 FEET	10 FEET	10 FEET
(1) PLACE 0.0	+1.00	+1.00	+1.00	+1.00	+1.00	+1.00	+1.00
(2) PLACE 0.00	+1.00	+1.00	+1.00	+1.00	+1.00	+1.00	+1.00
(3) PLACE 0.000	+1.00	+1.00	+1.00	+1.00	+1.00	+1.00	+1.00
ANGLES	±1.50	±1.50	±1.50	±1.50	±1.50	±1.50	±1.50

DWG. NO. 194324
SHT. 4 OF 5

DATE 2-11-00
PATTERN NO.
Manitowoc Cranes, Inc.
Manitowoc, Wisconsin
44 LUFFING JIB
ASSEMBLY
194324
SHT. 4 OF 5

REFERENCE PARTS LIST
(SEE JIB STRUT ASSY 194160)

R54	CABLE ASSEMBLY	194997
R55	PIN	194981
R56	PIN	179863
R57	COLLAR	179862
R58	PIN	179959
R59	STRAP LINK	194979
R60	PIN	194980
R61	COLLAR	178460
R62	PIN	174149

REFERENCE PARTS LIST
(SEE BOOM TOP ASSEMBLY 194093)

R1	PIN	194986
R2	KEEPER PLATE	171825
R3		

REFERENCE PARTS LIST
(SEE STRAP ASSEMBLY 194869)

R4	LOAD PIN ASSEMBLY	194872
R5	STRAP LINK	194864
R6	ADJUSTABLE LENGTH JIB STRAP W/LDMT	194861
R7	STRAP EXTENSION	194865
R8	COLLAR	194966
R9	PIN	194967
R10	PIN	194968
R11	PIN	194992
R12	COLLAR	179862
R13	PIN	179959

REFERENCE PARTS LIST
(SEE BOOM RIGGING ASSY 194041)

R18	MAST RIGGING ASSEMBLY	194363
R19	30 FT BOOM BUTT ASSEMBLY	194088
R20	20 FT INSERT ASSEMBLY	194086
R21	40 FT INSERT W/EQUALIZER PLATFORM	194091
R22	25 FT TRANSITION INSERT ASSEMBLY	194092
R23	5 FT BOOM TOP ASSEMBLY	194093
R24	40 FT INSERT W/DEFLECTOR SHEAVE ASSY	194089
R25	40 FT INSERT W/STRAPS	194087
R26	40 FT INSERT W/O STRAPS	194843
R27	STRAP SUPPORT LINK	195416
R28	STRAP PIN	194433
R29	COLLAR	194138
R30	COTTER PIN	194212
R31	STRAP PIN	179863
R32	COLLAR	179862
R33	COTTER PIN	179959
R34	STRAP, BASIC	194124
R35	STRAP LINK	192250
R36	STRAP - BASIC	194125
R37	STRAP LINK	194437
R38	BOOM EQUALIZER ASSEMBLY	194343
R39	BOOM PIN	175036
R40	SUPPORT STRAP (40FT)	179839
R41	SUPPORT STRAP (20FT)	179838
R42	BACK STAY STRAP - BASIC	194821
R43		
R44		

REFERENCE PARTS LIST
(SEE MAIN STRUT ASSY 194162)

R45	PIN	194994
R46	STRAP - BASIC	194993
R47	STRAP LINK	194979
R48	PENDANT	276935
R49	PIN	194682
R50	COLLAR	194683
R51	PIN	194684
R52		
R53		

BILL OF MATERIAL

QTY	DESCRIPTION	UNIT	MATERIAL	QTY NO	ASSEMBLY USED IN
1	1930-1100 #44 LUFFING JIB BASIC				
1	WASHER			137502	
3	JIB STRUT ASSEMBLY			194160	
4	MAIN STRUT ASSEMBLY			194162	

REVISIONS

NO.	DATE	DESCRIPTION
1	3-14-00	DWF
2	3-14-00	AWAS OTY 1
3	3-14-00	REMOVED
4	3-14-00	REMOVED
5	3-14-00	REMOVED
6	3-14-00	REMOVED
7	3-14-00	REMOVED
8	3-14-00	REMOVED
9	3-14-00	REMOVED
10	3-14-00	REMOVED
11	3-14-00	REMOVED
12	3-14-00	REMOVED
13	3-14-00	REMOVED
14	3-14-00	REMOVED
15	3-14-00	REMOVED
16	3-14-00	REMOVED
17	3-14-00	REMOVED
18	3-14-00	REMOVED
19	3-14-00	REMOVED
20	3-14-00	REMOVED
21	3-14-00	REMOVED
22	3-14-00	REMOVED
23	3-14-00	REMOVED
24	3-14-00	REMOVED
25	3-14-00	REMOVED
26	3-14-00	REMOVED
27	3-14-00	REMOVED
28	3-14-00	REMOVED
29	3-14-00	REMOVED
30	3-14-00	REMOVED
31	3-14-00	REMOVED
32	3-14-00	REMOVED
33	3-14-00	REMOVED

1930-1100 #44 LUFFING JIB BASIC

1	WASHER	137502
3	JIB STRUT ASSEMBLY	194160
4	MAIN STRUT ASSEMBLY	194162
5		
6	LUFFING JIB HOIST ASSEMBLY	194823
7	PIN	195208
8	JIB STOP ASSEMBLY	195209
9	PIN	160720
10	PIN	195666
11		
12		
13	PIN	179863
14	COLLAR	179862
15	PIN	179959
16	STRAP	179840
17	SCR MB X 30, 4.8 ZINC PLT	7121171301
18	SCR MB X 30, 4.8 ZINC PLT	7661170004
19	ROLLER ASSEMBLY	A053122
20	JIB STRUT SUPPORT	A00228
21	PIN	172298
22	SHAFT	195197
23	SHAFT	195204
24	KEEPER PLATE	195198
25	LUFFING JIB UPPER POINT ROLLER ASSY	174211
26	LUFFING JIB LOWER POINT ROLLER ASSY	172960
27	WASHER LOCK MB	7951170210
28	SIGN BOOM MANITOWOC	81008829

1930-1110 JIB BUTT MOD. 1 PIECE

34	#44 40 FT BOOM BUTT	171230
----	---------------------	--------

1930-1120 JIB BUTT MOD. 2 PIECE

35	#44 40 FT BOOM, LOWER SECTION	171283
36	40 FT. BOOM, UPPER SECTION	171284

1930-1130 #44INSERT 10 FT (3.1M)

37	PIN	78292
38	TIMBER	178905
39	BOOM SUPPORT STRAP (10 FT)	179837
40	BOOM SUPPORT LINK	192250
41	COLLAR	179862
42	PIN	179863
43	INSERT 10 FT (3.05M)	1799124
44	PIN	179959

1930-1140 #44INSERT 20 FT (6.1M)

47	PIN	78292
48	TIMBER	178905
49	BOOM SUPPORT STRAP (20 FT)	179838
50	BOOM SUPPORT LINK	192250
51	COLLAR	179862
52	PIN	179863
53	INSERT 20 FT (6.10M)	1799134
54	PIN	179959

1930-1150 #44INSERT 40 FT (12.2M)

57	PIN	78292
58	TIMBER	178905
59	BOOM SUPPORT STRAP (40 FT)	179839
60	BOOM SUPPORT LINK	192250
61	COLLAR	179862
62	PIN	179863
63	INSERT 40 FT (12.19M)	1799144
64	PIN	179959

OPTIONAL GUARD WIRE ROPE ASSEMBLY FOR CE CODE

67	GUARD WIRE ROPE FOR CE CODE	A06120
----	-----------------------------	--------

OPTIONAL PARTS

68	CAT WALK ASSY 50 FT #82LR BOOM TOP	810168994
69	CAT WALK ASSY 10 FT #44 INSERT	810169454
70	CAT WALK ASSY 20 FT #44 INSERT	810169464
71	CAT WALK ASSY 40 FT #44 INSERT	810169474

PRIVATE LABELING REQUIREMENT TO CONFORM TO ENGINEERING SPECIFICATION 8229103794 FOR COMPONENTS LISTED IN 82290-05-028

BOOM SECTION	OPTIONAL CAT WALK ASSY
179915	81016899
179912	81016945
179913	81016946
179914	81016947

ADDITIONAL PARTS REQ'D. FOR VARIOUS JIB LENGTHS

ITEM NO.	43	53	63	39	49	59	31, 37, 47 OR 57	32, 38, 48 OR 58	40, 50 OR 60	14, 41, 51 OR 61	13, 42, 52 OR 62	15, 44, 54 OR 64	ADJUSTABLE STRAP LENGTHS	
													POSITION	STRAP LENGTH
70	23.3	0	0	0	0	0	0	0	0	0	0	0	70	580.00
80	24.4	1	0	0	0	0	4	1	4	4	4	4	80	557.87
90	27.4	0	1	0	0	0	4	1	4	4	4	4	90	539.75
100	30.5	1	1	0	2	2	8	2	8	8	8	8	100	524.88
110	33.5	OR 0	2	0	0	4	8	2	8	8	8	8	110	512.38
120	36.6	OR 1	2	0	2	4	12	3	12	12	12	12	120	501.75
130	39.6	0	1	1	0	2	8	3	8	8	8	8	130	484.75
140	42.7	1	1	1	2	2	12	4	12	12	12	12	140	471.88
150	45.7	OR 0	2	0	0	4	12	4	12	12	12	12	150	461.63
160	48.8	OR 1	2	1	2	4	16	5	16	16	16	16	160	450.13
170	51.8	0	1	2	0	2	16	6	16	16	16	16	170	441.13
180	54.9	1	1	2	2	2	16	6	16	16	16	16	180	
190	57.9	OR 0	2	0	0	4	16	6	16	16	16	16	190	
200	61.0	OR 1	2	0	0	6	16	7	16	16	16	16	200	
210	64.0	0	1	3	0	2	16	7	16	16	16	16	210	
220	67.1	1	1	3	2	2	20	8	20	20	20	20	220	
230	70.1	OR 0	2	3	0	4	20	8	20	20	20	20	230	
240	73.2	OR 1	2	3	2	4	24	9	24	24	24	24	240	

PARTS REQUIRED FOR VARIOUS BOOM LENGTHS (BOOM INSERT, BOOM STRAPS AND JIB BACKSTAY STRAPS) (PART 1)

BOOM LENGTHS	FEET	METERS	R20						R25						R26						R24					
			20 FT W/LDMT	19 FT STRAP	LINK	PIN	COLLAR	PIN	40 FT W/LDMT	39 FT STRAP	LINK	PIN	COLLAR	PIN	40 FT W/LDMT	39 FT STRAP	LINK	PIN	COLLAR	PIN	40 FT W/LDMT	39 FT STRAP	LINK	PIN	COLLAR	PIN
140	43.7	0	0	0	0	0	0	0	0	0	0	0	0	0	0	0	0	0	0	0	0	0	0	0	0	0
160	48.8	1	1	2	4	4	4	0	0	0	0	0	0	0	0	0	0	0	0	0	0	0	0	0	0	0
180	54.9	0	0	0	0	0	0	0	0	0	0	0	0	0	0	0	0	0	0	0	0	0	0	0	0	0
200	61.0	1	1	4	8	8	8	8	0	0	0	0	0	0	0	0	0	0	0	0	0	0	0	0	0	0
220	67.0	0	0	0	0	0	0	0	1	1	4	8	8	8	8	1	1	2	4	4	4	4	4	4	4	4
240	73.2	1	1	4	8	8	8	8	1	1	4	8	8	8	8	1	1	2	4	4	4	4	4	4	4	4
260	79.2	0	0	0	0	0	0	0	2	2	8	16	16	16	16	1	1	2	4	4	4	4	4	4	4	4
280	85.3	1	1	4	8	8	8	8	2	2	8	16	16	16	16	1	1	2	4	4	4	4	4	4	4	4
300	91.4	0	0	0	0	0	0	0	3	3	12	24	24	24	24	1	1	2	4	4	4	4	4	4	4	4

PARTS REQUIRED FOR VARIOUS BOOM LENGTHS (W/BOOM INSERT, BOOM STRAPS AND JIB BACKSTAY STRAPS) (PART 2)

BOOM LENGTHS	FEET	METERS	R19						R21						R22						R23							
			30 FT W/LDMT	JIB STRAP	LINK	PIN	COLLAR	PIN	40 FT W/LDMT	39 FT STRAP	LINK	PIN	COLLAR	PIN	25 FT W/LDMT	STRAP BASIC	LINK	PIN	COLLAR	PIN	BOOM TOP W/LDMT	STRAP BASIC	LINK	PIN	COLLAR	PIN	PIN	COLLAR
140	43.7	1	1	2	8	6	6	6	1	1	2	4	4	4	4	1	1	2	4	4	4	4	1	1	2	4	4	4
160	48.8	1	1	2	8	6	6	6	1	1	2	4	4	4	4	1	1	2	4	4	4	4	1	1	2	4	4	4
180	54.9	1	1	2	8	6	6	6	1	1	2	4	4	4	4	1	1	2	4	4	4	4	1	1	2	4	4	4
200	61.0	1	1	2	8	6	6	6	1	1	2	4	4	4	4	1	1	2	4	4	4	4	1	1	2	4	4	4
220	67.0	1	1	2	8	6	6	6	1	1	2	4	4	4	4	1	1	2	4	4	4	4	1	1	2	4	4	4
240	73.2	1	1	2	8	6	6	6	1	1	2	4	4	4	4	1	1	2	4	4	4	4	1	1	2	4	4	4
260	79.2	1	1	2	8	6	6	6	1	1	2	4	4	4	4	1	1	2	4	4	4	4	1	1	2	4	4	4
280	85.3	1	1	2	8	6	6	6	1	1	2	4	4	4	4	1	1	2	4	4	4	4	1	1	2	4	4	4
300	91.4	1	1	2	8	6	6	6	1</																			