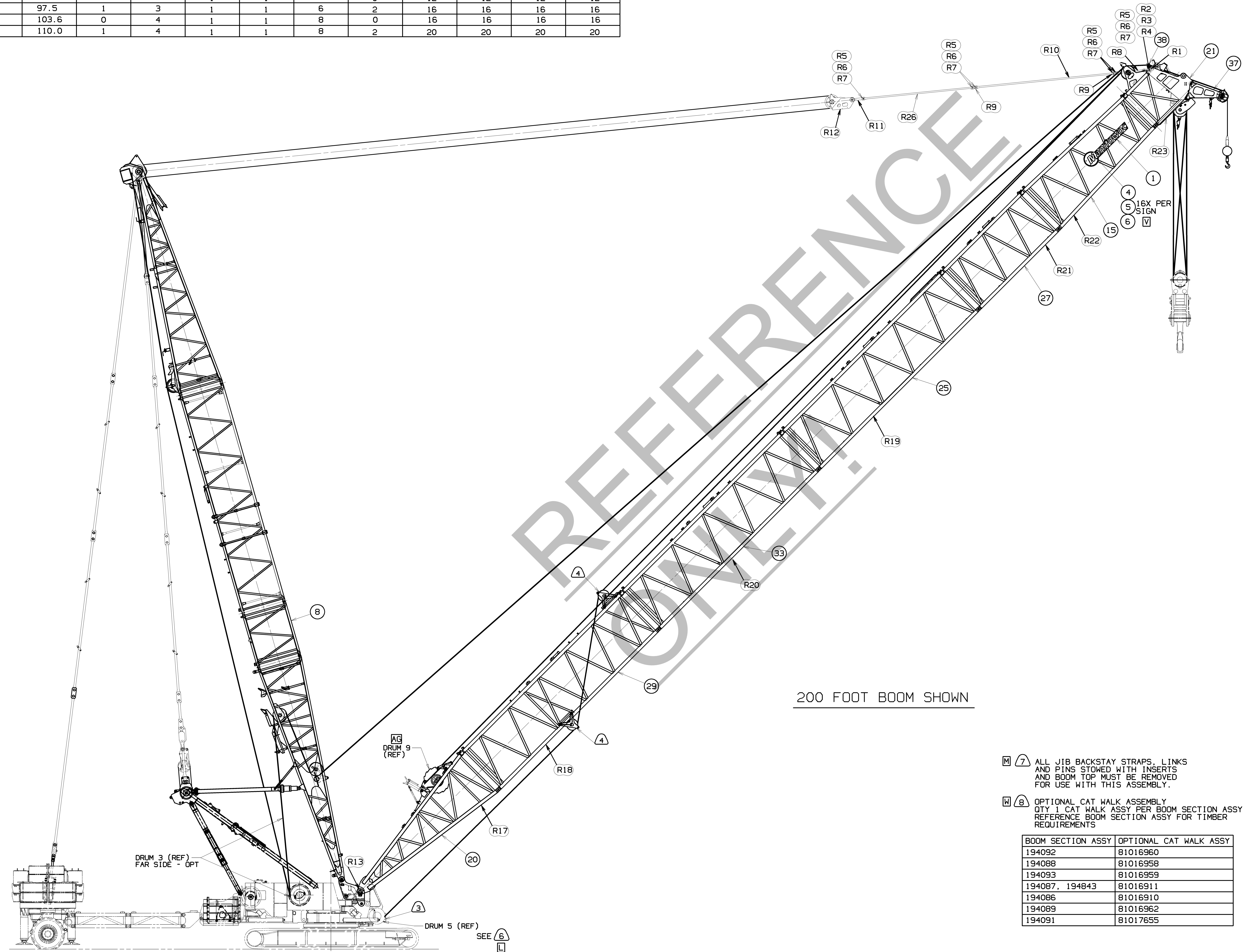


ADDITIONAL PARTS REQUIRED FOR VARIOUS BOOM LENGTHS

ITEM NO.	PART NO.	27		32	33	29	R25	R26	R5	R6	R7	R8
		FEET	METERS	W/ STRAPS	W/O STRAPS	W/ STRAPS	W/O STRAPS	W/ STRAPS	W/O STRAPS	STRAP PIN	COLLAR	COTTER PIN
120 BASIC	194086	36.6	1	0	0	0	0	0	0	0	0	0
140	194086	43.7	0	0	0	1	0	0	0	0	0	0
160	194086	48.8	1	0	0	1	0	0	0	0	0	0
180	194086	54.9	0	0	1	1	0	0	0	0	0	0
200	194086	61.0	1	0	1	1	0	2	4	4	4	4
220	194086	67.0	0	1	1	1	2	0	4	4	4	4
240	194086	73.2	1	1	1	1	2	2	8	8	8	8
260	194086	79.2	0	2	1	1	4	0	8	8	8	8
280	194086	85.3	1	2	1	1	4	2	12	12	12	12
300	194086	91.4	0	3	1	1	6	0	12	12	12	12
320	194086	97.5	1	3	1	1	6	2	16	16	16	16
340	194086	103.6	0	4	1	1	8	0	16	16	16	16
360	194086	110.0	1	4	1	1	8	2	20	20	20	20



200 FOOT BOOM SHOWN

- 7 ALL JIB BACKSTAY STRAPS, LINKS AND PINS STOWED WITH INSERTS AND BOOM TOP MUST BE REMOVED FOR USE WITH THIS ASSEMBLY.
- 8 OPTIONAL CAT WALK ASSEMBLY QTY 1 CAT WALK ASSY PER BOOM SECTION ASSY REFERENCE BOOM SECTION ASSY FOR TIMBER REQUIREMENTS

BOOM SECTION ASSY	OPTIONAL CAT WALK ASSY
194092	81016960
194088	81016958
194093	81016959
194087, 194843	81016911
194086	81016910
194089	81016962
194091	81017655

BILL OF MATERIAL				ASSEMBLIES USED IN
QTY	ITEM NO.	DESCRIPTION	MATERIAL	QTY OF BOM NO.
1930-2300 BASIC BOOM 120 FT (36.6M)				
1	2	SIGN BOOM MANITOWOC		81008829
4	32	SCR M8 X 30, 4.8 ZINC PLT		7121171301
5	32	NUT HEX M8-1.25 10 PLN		7661170004
6	32	WASHER LOCK M8		7951170210
8	1	MAST RIGGING ASSEMBLY		194363
15	1	25 FT TRANSITION INSERT ASSEMBLY		194092
20	1	30 FT BOOM BUTT ASSEMBLY		194088
21	1	5 FT BOOM TOP ASSEMBLY		194093
25	1	40 FT INSERT W/EQUALIZER PLATFORM		194091
27	1	20 FT INSERT ASSEMBLY		194086
29	1	40 FT INSERT W DEFLECTOR SHEAVE ASSEM.		194089

1930-2310 40 FT INSERT (12.19M) WITH DEFLECTOR SHEAVES			
29	1	40 FT INSERT W DEFLECTOR SHEAVE ASSEM.	194089
32	1	40 FT INSERT WITH STRAPS	194087
33	1	40 FT INSERT WITH OUT STRAPS	194843

1930-2320 40 FT INSERT (12.19M)			
32	1	40 FT INSERT WITH STRAPS	194087
33	1	40 FT INSERT WITH OUT STRAPS	194843

OPTIONAL PARTS			
37	1	UPPER POINT ASSEMBLY	194158
38	1	INDICATOR, LOAD SENSOR	194370

REFERENCE PARTS LIST BASIC BOOM STRAPS (SEE 194093 AND 194092)			
ITEM	QTY	DESCRIPTION	PART NO.
R1	4	STRAP SUPPORT LINK	195416
R2	2	STRAP PIN	194433
R3	2	COLLAR	194138
R4	2	COTTER PIN	194212
R5	8	STRAP PIN	179863
R6	8	COLLAR	179862
R7	8	COTTER PIN	179959
R8	2	STRAP, BASIC	194124
R9	4	STRAP LINK	192250
R10	2	STRAP- BASIC	194125
R11	4	STRAP LINK	194437
R12	1	BOOM EQUALIZER ASSEMBLY	194343
R13	2	BOOM PIN	175036

REFERENCE PARTS LIST (BOOM INSERT WELDMENTS)			
ITEM	QTY	DESCRIPTION	PART NO.
R17	1	30 FT. #79 BUTT	193411
R18	1	40 FT. #79 INSERT W/ DEFLECTOR SHEAVES	193874
R19	1	40 FT. #79 INSERT W/ EQUALIZER RAILS	194090
R20	1	40 FT. #79 INSERT	193413
R21	1	20 FT. #79 INSERT	193412
R22	1	25 FT. #79 TRANSITION INSERT	193414
R23	1	5 FT. #79 BOOM TOP	193415

- 1 THESE ITEMS ARE THE WELDMENT PART NUMBERS FOR EACH INSERT ASSEMBLY. USE THESE WELDMENT NO.s FOR BOOM TAG NAME PLATE I.D.
- 2 ITEM 27, 20 FT. INSERT, IS PART OF BASIC BILL. IT IS LISTED ALSO UNDER "ADDITIONAL PARTS" TO CLARIFY WHEN IT IS AND IS NOT NEEDED. TOTAL QTY. PER CRANE = 1
- 3 1.125, 1.00, OR .875 DIA. ROPE.
- 4 ENSURE DEFLECTOR SHEAVES ARE SUPPLIED AS SHOWN
- 5 REMOVE WHEN JIB IS USED.
- 6 LUFFING JIB HOIST ASSEMBLY 194823 FOR 1.00 WIRE ROPE OR JIB LUFFING HOIST ASSEMBLY 177356, 170800, OR 175591 (FOR .875 WIRE ROPE) MAY BE USED. 177356, 170800, OR 175591 CANNOT BE USED FOR MAXER 2000 LUFFING JIB HOIST LINE.

THIS PRINT REMAINS THE PROPERTY OF MANITOWOC CRANES, INC. IF IT IS LOANED, SUBJECT TO RETURN IN GOOD ORDER AND ON EXPRESS CONDITION THAT IT IS NOT TO BE COPIED OR USED DIRECTLY OR INDIRECTLY IN ANY MANNER WITHOUT THE WRITTEN PERMISSION OF MANITOWOC CRANES, INC.

DATE: 11-22-99	MANITOWOC CRANES, INC.	BOOM RIGGING
DR: UES	Manitowoc, Wisconsin	ASSEMBLY
CK: KLH	MODEL 2250 MAXER 2000	#79 BOOM
APP: KLH		

194041



BILL OF MATERIAL			
QTY	REF	DESCRIPTION	MATERIAL
1	15		
1	20		
1	21		
1	25		
1	27		
1	29		
1	32		
1	33		
1	R17		
1	R18		
1	R19		
1	R20		
1	R21		
1	R22		
1	R23		

REV	DATE	DESCRIPTION
08-06-08	TMB	PICTURE UPDATED

RECOMMENDED BOOM ASSEMBLY

<small>THIS PRINT REMAINS THE PROPERTY OF MANITOWOC CRANES, INC. ALL INFORMATION CONTAINED HEREIN IS CONFIDENTIAL. IT IS LOANED, SUBJECT TO RETURN UPON DEMAND, AND ON EXPRESS CONDITION THAT IT IS NOT TO BE COPIED OR USED DIRECTLY OR INDIRECTLY IN ANY WAY WHATSOEVER DETRIMENTAL TO OUR INTERESTS.</small>	<small>DECIMAL PLACES</small> <small>FABRICATION</small> <small>(1) PLACE 0.0 ±.12 ±.18 ±.03</small> <small>(2) PLACE 0.00 ±.06 ±.12 ±.015</small> <small>(3) PLACE 0.000 ±.006 ±.005</small> <small>ANGLES</small> <small>11-30</small> <small>07-90</small>	<small>TOLERANCE UNLESS OTHERWISE SPECIFIED</small> <small>MACHINING</small> <small>±.005</small> <small>±.010</small> <small>±.015</small> <small>±.020</small> <small>±.025</small> <small>±.030</small> <small>±.035</small> <small>±.040</small> <small>±.045</small> <small>±.050</small> <small>±.055</small> <small>±.060</small> <small>±.065</small> <small>±.070</small> <small>±.075</small> <small>±.080</small> <small>±.085</small> <small>±.090</small> <small>±.095</small> <small>±.100</small>	<small>SCALE</small> <small>1/2"=1'</small> Manitowoc Cranes, Inc. <small>DR. UES</small> <small>CK. KLH</small> <small>APP. KLH</small> <small>Manitowoc, Wisconsin</small> <small>MODEL 2250 MAXER 2000</small>	BOOM RIGGING ASSEMBLY # 79 BOOM	<small>DATE</small> 11-22-99 <small>PATTERN NO.</small> 194041
---	--	---	---	--	---

DO NOT SCALE THIS DRAWING