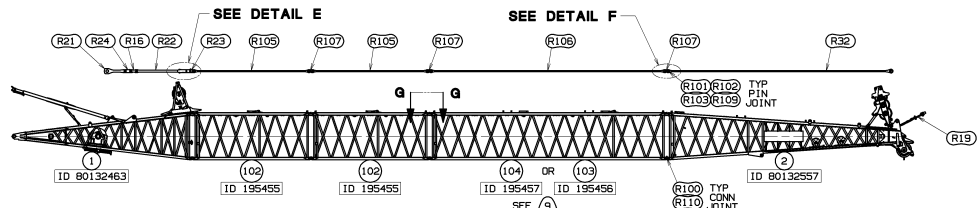
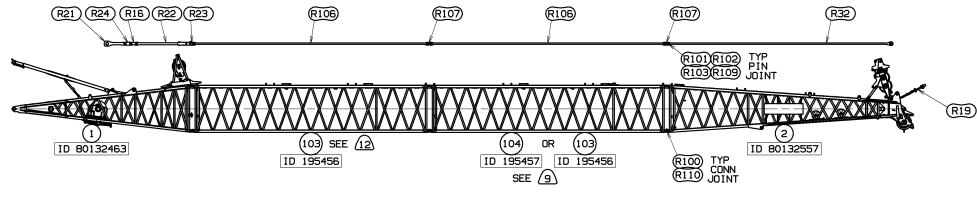


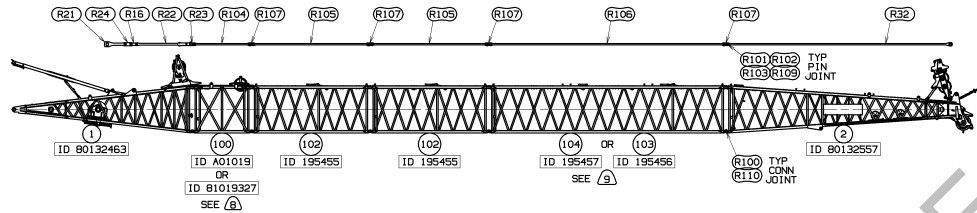
45.7 M BOOM
(150.0 FT)



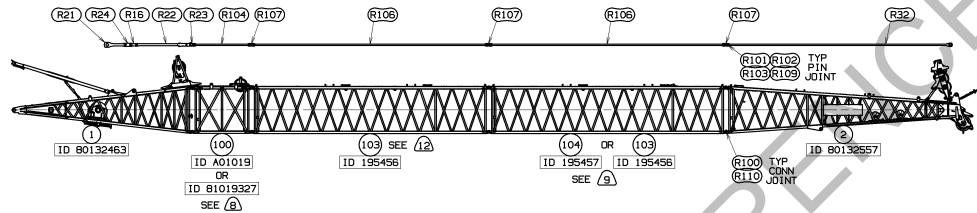
45.7 M BOOM
(150.0 FT)



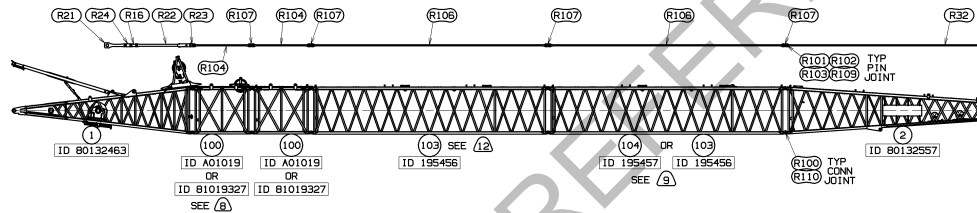
48.8 M BOOM
(160.0 FT)



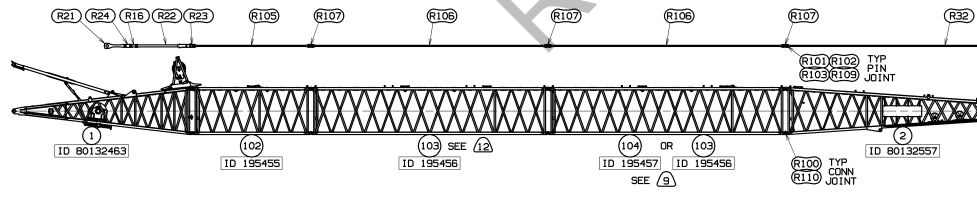
48.8 M BOOM
(160.0 FT)



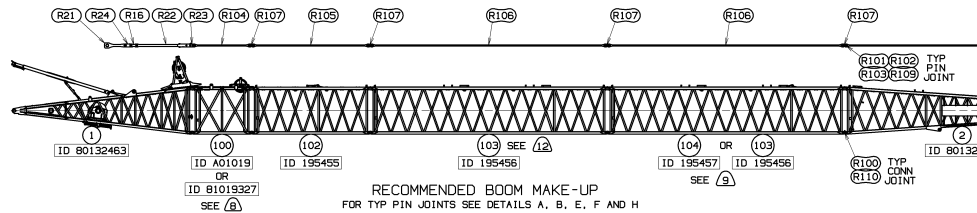
51.8 M BOOM
(170.0 FT)



51.8 M BOOM
(170.0 FT)



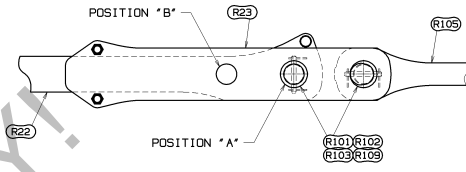
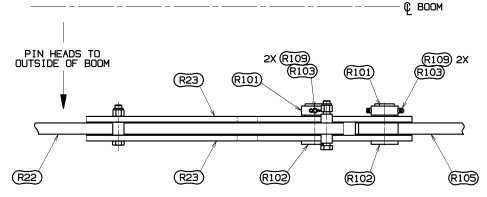
54.9 M BOOM
(180.0 FT)



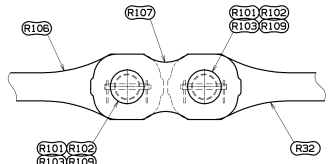
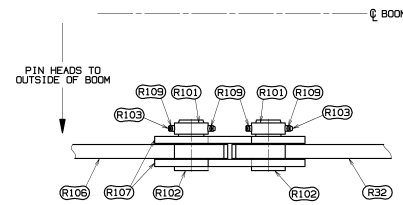
RECOMMENDED BOOM MAKE-UP
FOR TYP PIN JOINTS SEE DETAILS A, B, E, F AND H

DO NOT SCALE THIS DRAWING

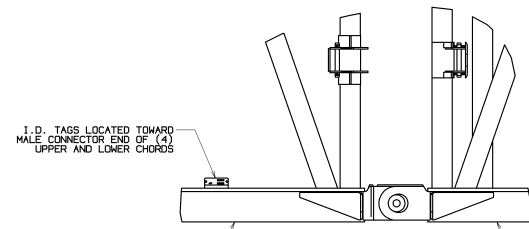
BILL OF MATERIAL		REVISIONS
ITEM NO.	DESCRIPTION	MATERIAL



DETAIL E
STRAP ITEM R22 (80146247) ATTACHED TO POSITION 'A'
OF STRAP MAST ADJUST ITEM R23 (80146248)
SCALE 0.200



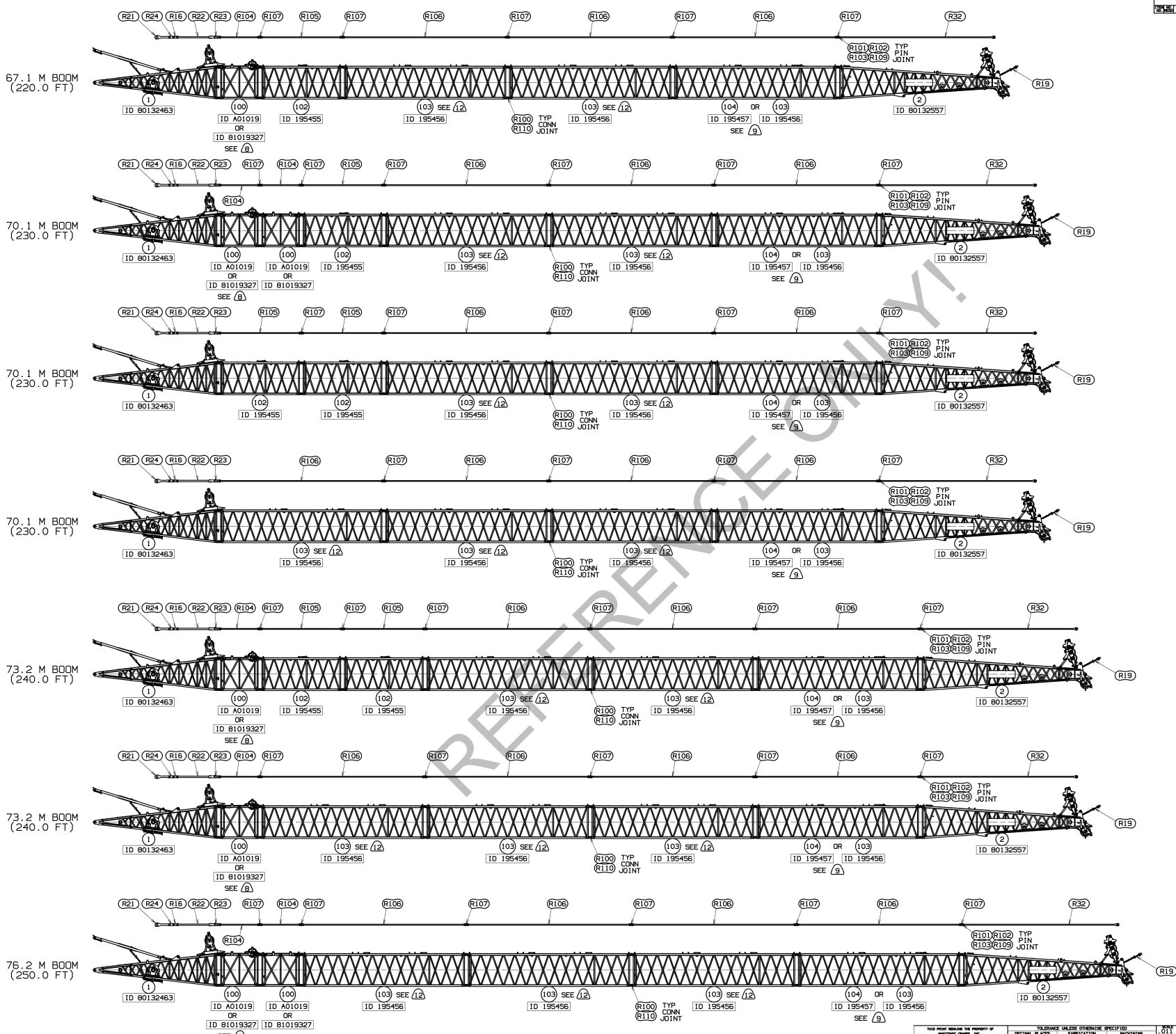
DETAIL F
SCALE 0.250



VIEW G-G
TYPICAL LOCATION OF
INSERT IDENTIFICATION TAGS
SCALE 0.150

THIS PRINT REMAINS THE PROPERTY OF MARTINOWEE CRANES, INC. ALL INFORMATION CONTAINED HEREIN IS CONFIDENTIAL, IT IS LOANED, REPRODUCED OR DISCLOSED TO ANY OTHER PERSON OR ENTITY WITHOUT THE WRITTEN CONSENT OF MARTINOWEE CRANES, INC. IT IS TO BE DESTROYED WHEN NOT NECESSARY TO OUR BUSINESS.		TOLERANCE UNLESS OTHERWISE SPECIFIED: FABRICATION: 111 PLACE 0.0 112 PLACE 0.0 113 PLACE 0.0 ANGLES 1/32	DATE: 03-16-23 BY: JJA CHK: JRR	APP: JRR	REV: 1 2 3 4 5 6 7 8 9 10 11	Martinowee Cranes, Inc. Martinowee, Wisconsin BOOM RIGGING B10:82A	03-16-23 REV: 11 B10:82A 80137888 SHIT 4 OF 11
---	--	---	---------------------------------------	----------	--	---	--

BILL OF MATERIAL				ASSEMBLY
ITEM NO.	DESCRIPTION	MATERIAL	QUANTITY	REQ. BY

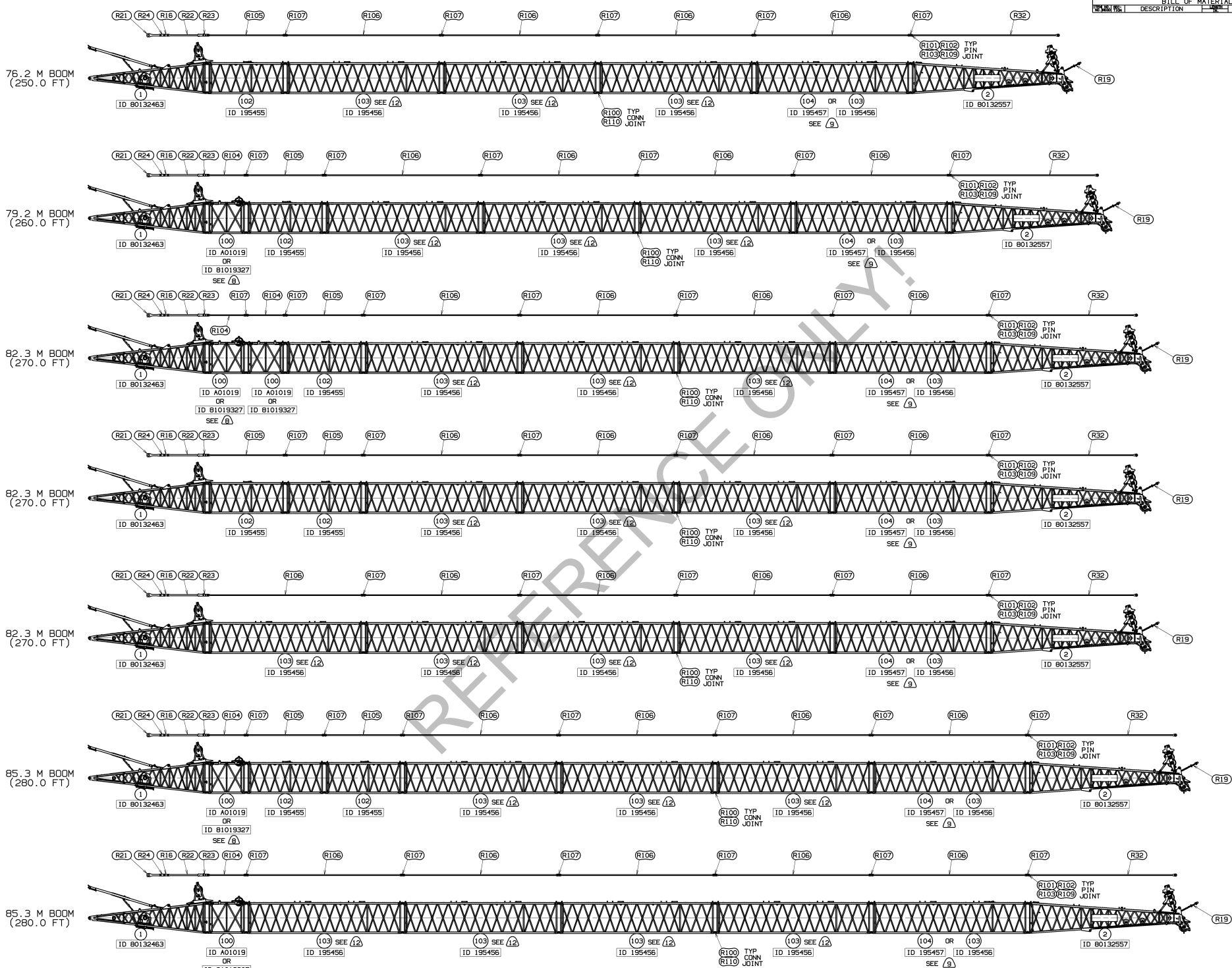


RECOMMENDED BOOM MAKE-UP
FOR TYP PIN JOINTS SEE DETAILS A, B, E, F AND H

<small>THIS PRINT REMAINS THE PROPERTY OF MANITOWOC CRANES, INC. ALL INFORMATION CONTAINED HEREIN IS CONFIDENTIAL. IT IS LOANED TO YOU BY THE COMPANY AND IS NOT TO BE REPRODUCED OR TRANSMITTED IN ANY FORM OR BY ANY MEANS, ELECTRONIC OR MECHANICAL, INCLUDING PHOTOCOPYING, RECORDING, OR BY ANY INFORMATION STORAGE AND RETRIEVAL SYSTEM, WITHOUT THE WRITTEN PERMISSION OF MANITOWOC CRANES, INC.</small>	<small>TOLERANCE UNLESS OTHERWISE SPECIFIED:</small> FRACTIONS: 1/16" TO 1/8" ± 0.005" DECIMALS: 0.005" TO 0.0625" ± 0.001" ANGLES: ± 30'	<small>FABRICATION:</small> ALL STEEL: A36 ALL WELDS: E70XX ALL BOLTS: A325 ALL NUTS: A325 ALL RIVETS: A470	DATE: 11/11/11 BY: JRR	MANITOWOC CRANES, INC. MANITOWOC, WISCONSIN MODEL: C250	BOOM RIGGING B10:82A
			SHEET NO.: 03-16-23 OF 11		

DO NOT SCALE THIS DRAWING

BILL OF MATERIAL			
ITEM NO.	DESCRIPTION	MATERIAL	QUANTITY



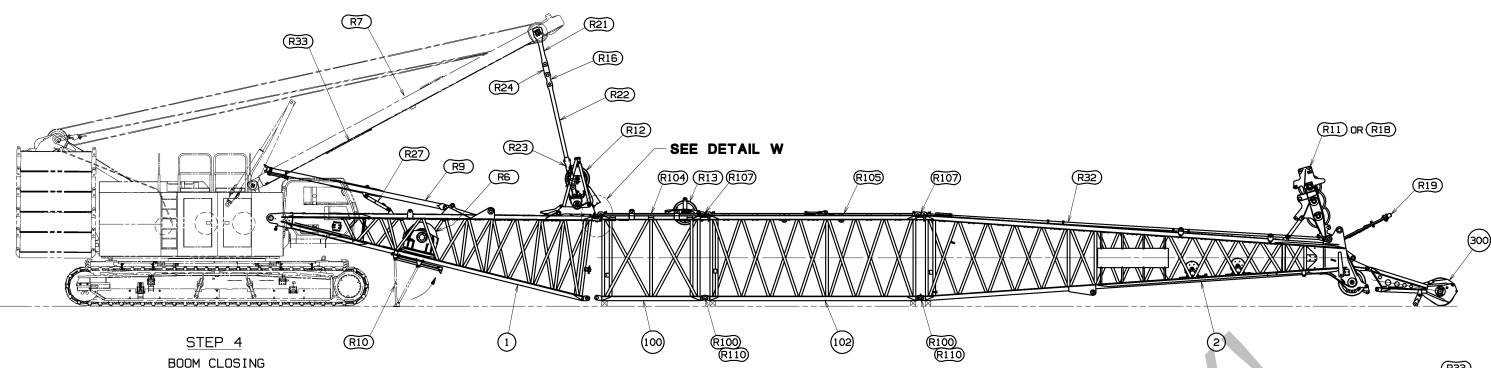
RECOMMENDED BOOM MAKE-UP
FOR TYP PIN JOINTS SEE DETAILS A, B, E, F AND H

THIS PRINT REMAINS THE PROPERTY OF MARLBOROUGH CRANES, INC.		TOLERANCES UNLESS OTHERWISE SPECIFIED:		DATE	MANUFACTURED BY
ALL DIMENSIONS UNLESS OTHERWISE SPECIFIED ARE IN MILLIMETERS.	FABRICATION	±0.25	±0.50	03-16-23	Marlborough Cranes, Inc.
IF AN UNLATTERED DIMENSION IS GIVEN IN MILLIMETERS, IT SHALL BE CONSIDERED TO BE THE DIMENSION OF THE PART AS MANUFACTURED.	FINISH	±0.25	±0.50	03-16-23	Marlborough, Wisconsin
IF AN UNLATTERED DIMENSION IS GIVEN IN INCHES, IT SHALL BE CONSIDERED TO BE THE DIMENSION OF THE PART AS MANUFACTURED.	DR	±0.25	±0.50	03-16-23	Marlborough Cranes, Inc.
IF AN UNLATTERED DIMENSION IS GIVEN IN INCHES, IT SHALL BE CONSIDERED TO BE THE DIMENSION OF THE PART AS MANUFACTURED.	CHK	±0.25	±0.50	03-16-23	Marlborough Cranes, Inc.
IF AN UNLATTERED DIMENSION IS GIVEN IN INCHES, IT SHALL BE CONSIDERED TO BE THE DIMENSION OF THE PART AS MANUFACTURED.	APP	±0.25	±0.50	03-16-23	Marlborough Cranes, Inc.

PRIVATE LABELING RIGHTS RESERVED TO THE ENGINEERING SPECIFICATION FOR CONCRETE LIFTING IN 000000-05-035

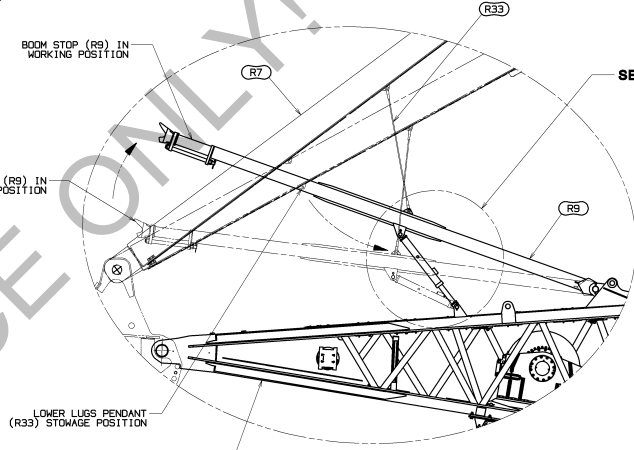
03-16-23
REV. 1
B
BOOM RIGGING
B10:82A
80137888
SHT 7 OF 11

DO NOT SCALE THIS DRAWING

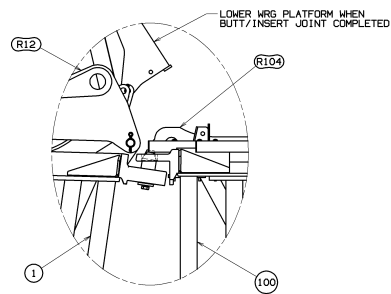


STEP 4
BOOM CLOSING

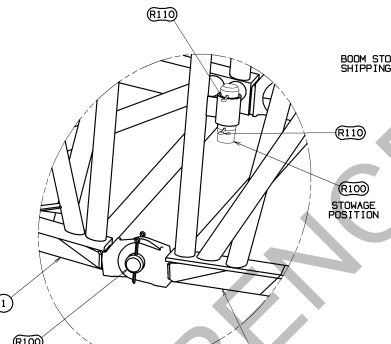
WITH MAST STRAPS ATTACHED TO WIRE ROPE GUIDE LINKS (R12) ADJUST BOOM BUTT HEIGHT TO MOVE BOOM BUTT SUPPORT FRAME (R10) TO STORAGE POSITION. WITH THE BOOM INSERTS/TOP ASSEMBLY SUPPORTED ON BLOCKING, POSITION MACHINE TO ALIGN UPPER PIN CONNECTOR PINS ON BOOM BUTT WITH UPPER PIN CONNECTOR HOLES ON FIRST BOOM INSERT AND ENGAGE PINS. (SEE DETAIL W ON SHEET 10). SLOWLY BOOM UP TO ALIGN LOWER PIN CONNECTOR HOLES ON BOOM BUTT WITH LOWER PIN CONNECTOR HOLES IN FIRST BOOM INSERT AND INSERT TAPERED PINS (R100) AND COTTERS (R110) WITH TAPERED END TOWARD BOOM CENTERLINE. (SEE DETAIL X ON SHEET 10). CAUTION: DO NOT CONTINUE TO BOOM UP AFTER BOOM CONNECTOR PINS ARE INSTALLED. LOWER WIRE ROPE GUIDE (R12) PLATFORM AT BUTT/INSERT JOINT.



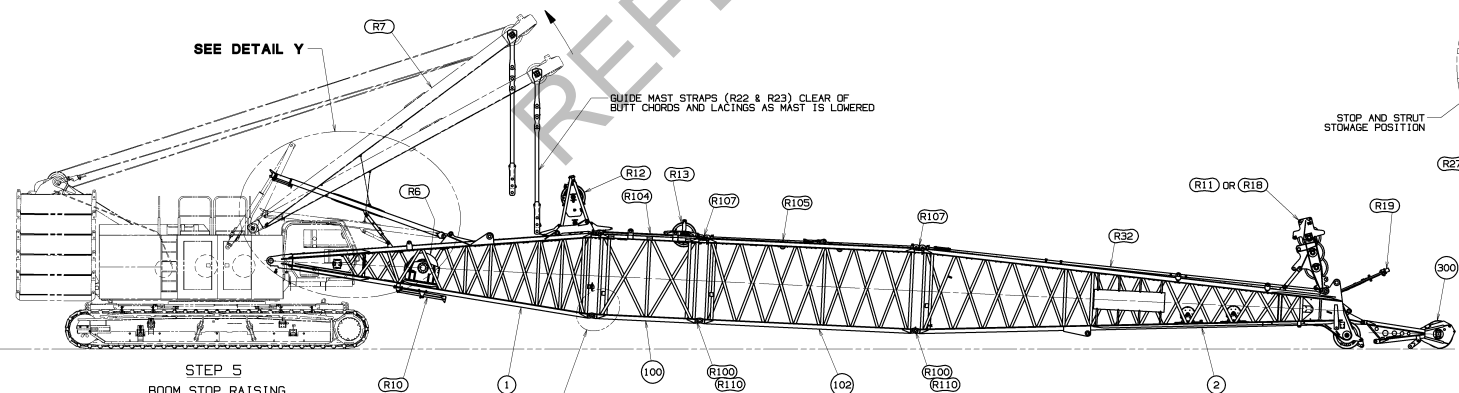
DETAIL Y
SCALE 0.050



DETAIL W
BOOM BUTT FIXED VERTICAL PIN TO INSERT CONNECTOR SCALE 0.125

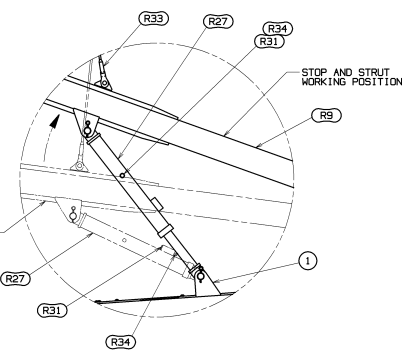


DETAIL X (150)
TYPICAL LOWER PIN CONNECTORS SCALE 0.150



STEP 5
BOOM STOP RAISING

BOOM DOWN TO REMOVE TENSION ON MAST STRAPS (R22 & R23) AT WIRE ROPE GUIDE LINKS (R12). SKING MAST STRAPS (R22 & R23) FORWARD AND INSTALL GUIDE PINS 196012 TO LIMIT MOVEMENT OF MAST STRAPS. (SEE DETAIL T ON SHEET 9). UNPIN MAST STRAPS (R22 & R23) FROM LINKS IN WIRE ROPE GUIDE (R12). UNPIN GUIDE PINS 196012 ALLOWING MAST STRAPS (R22 & R23) TO SKING INTO VERTICAL POSITION. STORE GUIDE PINS 196012 PER DETAIL U ON SHEET 9. WITH BOOM STOP IN SHIPPING POSITION, UNPIN PENDANTS (R33) FROM LOWER LUG STORAGE POSITION ON MAST AND PIN TO LUG ON BOOM STRAPS. (SEE DETAIL Y ON SHEET 10). BOOM UP TO RAISE BOOM STOPS (R9) AND EXTEND STRUTS (R27) UNTIL HOLE IN STRUT OUTER TUBE IS ABOVE ENDS OF STRUT INNER TUBES. INSTALL PINS (R31) STORED ON STRUT (R27) TO LOCK BOOM STOP (R9) IN WORKING POSITION. (SEE DETAIL Z ON SHEET 10). LOWER MAST UNTIL PENDANTS (R33) ARE SLACK AND INNER STRUT TUBES ARE RESTING ON PINS (R31). UNPIN PENDANTS (R33) FROM BOOM STOPS AND RETURN PENDANTS TO STORAGE LUGS ON MAST (R7).



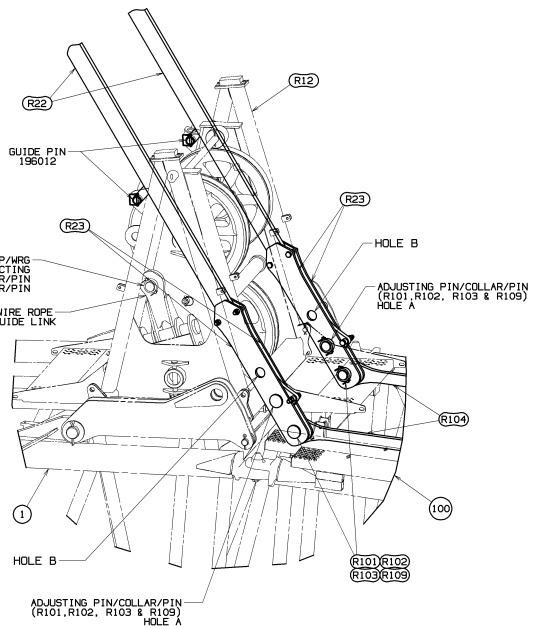
DETAIL Z
SCALE 0.100

DO NOT SCALE THIS DRAWING

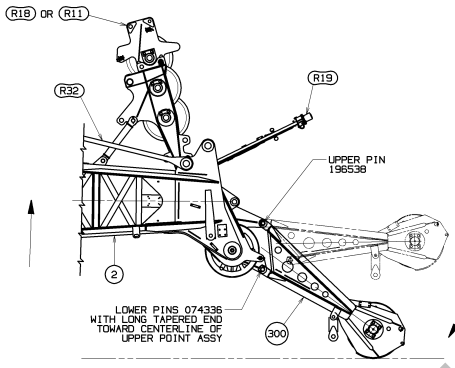
<small>THIS PRINT REMAINS THE PROPERTY OF MARSHWALK CRANES, INC. ALL INFORMATION CONTAINED HEREIN IS CONFIDENTIAL. IT IS LOANED, SUBJECT TO STRICT NON-DISCLOSURE AND NON-COPYING AGREEMENTS, TO THE USER OF THESE DRAWINGS. THE USER AGREES TO HOLD MARSHWALK CRANES, INC. HARMLESS FROM ANY AND ALL DAMAGES, INCLUDING REASONABLE ATTORNEY'S FEES, THAT MAY BE INCURRED BY MARSHWALK CRANES, INC. AS A RESULT OF THE USER'S FAILURE TO PROTECT THIS INFORMATION.</small>	<small>TOLERANCE UNLESS OTHERWISE SPECIFIED</small> FRACTIONS: 1/16, 1/8, 1/4, 3/8, 1/2, 5/8, 3/4, 7/8, 1.0 DECIMALS: 0.0005, 0.001, 0.002, 0.005, 0.010, 0.015, 0.030, 0.060, 0.125, 0.250, 0.500, 1.000 ANGLES: 30°, 45°, 60°, 90°	DATE: 03/16/23 DRAWN BY: JRR CHECKED BY: JRR APPROVED BY: JRR	MANUFACTURED BY: Marshall Cranes, Inc. MODEL: MLC250 PART: B10:82A	SHEET NO: 80137888 OF 11 SHEETS TITLE: BOOM RIGGING
	FABRICATION: Marshall Cranes, Inc. PART: B10:82A	DATE: 03/16/23 DRAWN BY: JRR CHECKED BY: JRR APPROVED BY: JRR	MANUFACTURED BY: Marshall Cranes, Inc. MODEL: MLC250 PART: B10:82A	SHEET NO: 80137888 OF 11 SHEETS TITLE: BOOM RIGGING
	DATE: 03/16/23 DRAWN BY: JRR CHECKED BY: JRR APPROVED BY: JRR	MANUFACTURED BY: Marshall Cranes, Inc. MODEL: MLC250 PART: B10:82A	SHEET NO: 80137888 OF 11 SHEETS TITLE: BOOM RIGGING	SHEET NO: 80137888 OF 11 SHEETS TITLE: BOOM RIGGING
	DATE: 03/16/23 DRAWN BY: JRR CHECKED BY: JRR APPROVED BY: JRR	MANUFACTURED BY: Marshall Cranes, Inc. MODEL: MLC250 PART: B10:82A	SHEET NO: 80137888 OF 11 SHEETS TITLE: BOOM RIGGING	SHEET NO: 80137888 OF 11 SHEETS TITLE: BOOM RIGGING

PRIVATE LABELING RIGHTS RESERVED TO ENGINEERING SPECIFICATION 660100794 FOR CONCRETE LIFTING IN 00000-05-035

BILL OF MATERIAL				ASSEMBLY
ITEM NO.	DESCRIPTION	QTY	MATERIAL	REV



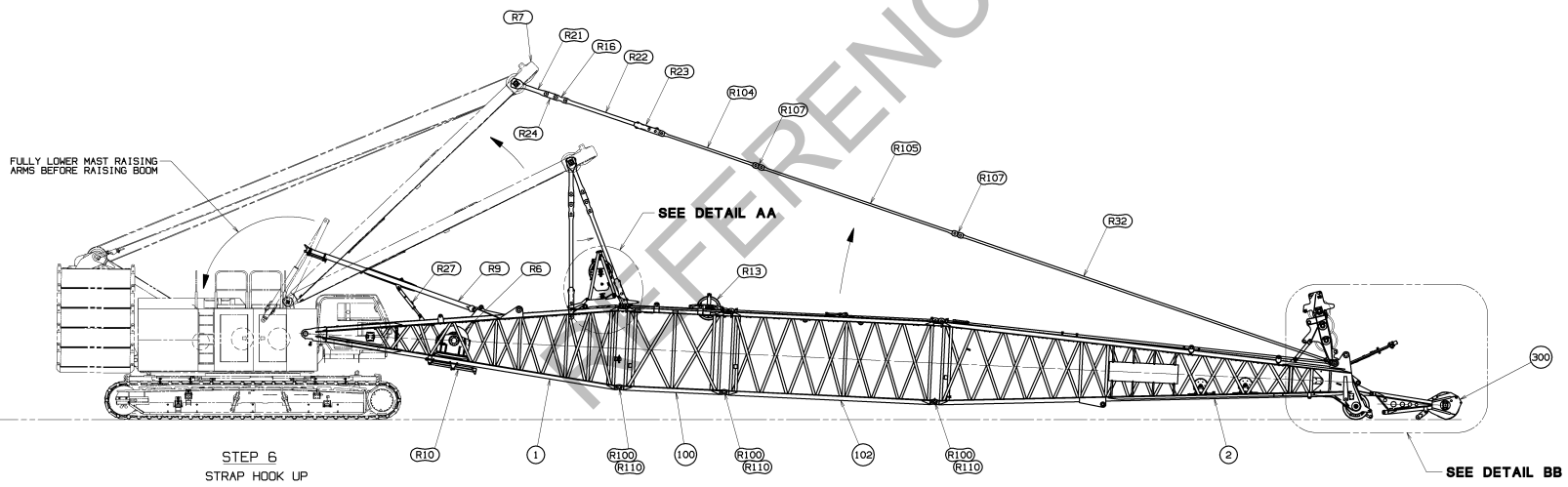
DETAIL AA (150)
SCALE 0.100



DETAIL BB
UPPER BOOM POINT ASSEMBLY
WITH UPPER PIN INSTALLED RAISE BOOM TO ALLOW UPPER BOOM POINT (ITEM 300) TO ROTATE INTO POSITION TO ALLOW LOWER PINS TO BE INSTALLED. (SEE DETAIL J ON SHEET 5).
SCALE 0.040

TO DISASSEMBLE BOOM

- BOOM DOWN AND SUPPORT BOOM ON BLOCKING. UNREEVE BLOCK. IF EQUIPPED WITH UPPER BOOM POINT (ITEM 300) REMOVE LOWER CONNECTING PINS BEFORE UPPER POINT CONTACTS GROUND. (SEE DETAIL BB ON SHEET 11).
- DISCONNECT MAST STRAPS FROM BOOM INSERT STRAPS. (REVERSE INSTALLATION STEP 6 ON SHEET 11).
- LOWER BOOM STOPS TO SHIPPING POSITION USING PENDANTS (R33). (REVERSE LATER PORTION OF INSTALLATION STEP 5 ON SHEET 10).
- CONNECT MAST STRAPS TO HANDLING LINK ON ROPE GUIDE (R12). (REVERSE FIRST PORTION ON INSTALLATION STEP 5 ON SHEET 10).
- BOOM UP TO REMOVE SLACK FROM MAST STRAPS.
WARNING:
DO NOT BOOM UP TO PUT TENSION INTO MAST STRAPS. (REMOVE SLACK ONLY). TENSION IN MAST STRAPS WILL DAMAGE ROPE GUIDE AND BOOM BUTT.
- REMOVE LOWER BUTT TO INSERT PINS AND BOOM DOWN TO DISENGAGE UPPER BOOM BUTT TO INSERT PINS. (REVERSE INSTALLATION STEP 4 ON SHEET 10).
WARNING:
BOOM MUST BE PROPERLY BLOCKED TO PREVENT SHIFTING DURING PIN REMOVAL.
- SLOWLY BACK AWAY FROM BOOM.
- REMOVE BOOM BUTT FROM ROTATING BED WITH MAST. (REVERSE INSTALLATION STEP 3 ON SHEET 9).
DANGER:
PREVENT MAST FROM COLLAPSING:
FULLY RAISE MAST ARMS BEFORE RAISING MAST TO VERTICAL.
- DISASSEMBLE BOOM WITH MAST. REMOVE LOWER CONNECTOR PINS FIRST. WITH BOOM STRAPS POSITIONED IN BRACKETS ON INSERTS AND BOOM TOP UNPIN LINKS (R107) AND ROTATE THEM INTO SHIPPING POSITION AND RETAIN THEM TO STRAPS WITH STORAGE PIN.



STEP 6
STRAP HOOK UP

RAISE OR LOWER MAST UNTIL MAST STRAPS (R22 & R23) ARE NEAR WIRE ROPE GUIDE LINKS (R12) ON BOOM BUTT ITEM 1. SLIDE MAST STRAPS (R22 & R23) FORWARD AND INSTALL GUIDE PINS 196012. (SEE DETAIL AA ON SHEET 11). BOOM DOWN TO ALIGN CONNECTING HOLES IN MAST STRAPS WITH HOLES IN BOOM STRAPS (SEE DETAIL AA ON SHEET 11). (MAST STRAPS WILL SLIDE DOWN OVER GUIDE PINS 19612 AS SHOWN IN DETAIL AA ON SHEET 11. PUSH MAST STRAPS FORWARD AS REQUIRED).

PIN MAST STRAPS (R23) TO BOOM STRAPS WITH PINS/COLLARS/PINS (R101, R102, R103 & R109). HEADS OF PINS (R102) TO BE FACING OUTSIDE.

RELOCATE ADJUSTING PINS/COLLARS/PINS (R101, R102, R103 & R109) TO HOLE "A" OR "B" AS SPECIFIED ON BOOM LENGTH TABLE ON SHEET 2. BOOM MAST UP OR DOWN AS NEEDED TO ALIGN HOLES AND INSTALL PINS IN PROPER HOLES.

REMOVE AND STORE GUIDE PINS 196012. (SEE DETAIL U ON SHEET 9).
CAUTION: STORE GUIDE PINS BEFORE RAISING MAST TO PREVENT DAMAGE TO WIRE ROPE GUIDE AND GUIDE PINS.

FULLY LOWER MAST RAISING ARMS.
DANGER: MAST WILL BUCKLE AND COLLAPSE IF IT CONTACTS ARMS WITH A FULLY RIGGED BOOM ATTACHED.

BOOM CAN NOT BE RAISED. (SEE DETAIL BB ON SHEET 11 FOR UPPER BOOM POINT ASSEMBLY (ITEM 300) IF EQUIPPED).

DO NOT SCALE THIS DRAWING

THIS PRINT REMAINS THE PROPERTY OF		TOLERANCE UNLESS OTHERWISE SPECIFIED		DATE		Manufacture Cranes, Inc.		03-16-23	
ALL INFORMATION CONTAINED HEREIN IS CONFIDENTIAL AND IS LOANED, SUBJECT TO SIGNATURE AND RETURN TO THE ORIGINAL OWNER. UNLESS OTHERWISE SPECIFIED, ALL DIMENSIONS ARE IN INCHES. UNLESS OTHERWISE SPECIFIED, ALL DIMENSIONS ARE TO BE UNLESS OTHERWISE SPECIFIED.		FABRICATION		REV		Marktwave, Wisconsin		REV	
11	PLACE 0.0	1.0	±0.01	1.0	1.0	1.0	1.0	1.0	1.0
12	PLACE 0.00	0.005	±0.005	0.005	0.005	0.005	0.005	0.005	0.005
13	PLACE 0.000	0.0005	±0.0005	0.0005	0.0005	0.0005	0.0005	0.0005	0.0005
14	PLACE 0.000	0.0001	±0.0001	0.0001	0.0001	0.0001	0.0001	0.0001	0.0001
15	PLACE 0.000	0.00005	±0.00005	0.00005	0.00005	0.00005	0.00005	0.00005	0.00005
16	PLACE 0.000	0.00001	±0.00001	0.00001	0.00001	0.00001	0.00001	0.00001	0.00001
17	PLACE 0.000	0.000005	±0.000005	0.000005	0.000005	0.000005	0.000005	0.000005	0.000005
18	PLACE 0.000	0.000001	±0.000001	0.000001	0.000001	0.000001	0.000001	0.000001	0.000001
19	PLACE 0.000	0.0000005	±0.0000005	0.0000005	0.0000005	0.0000005	0.0000005	0.0000005	0.0000005
20	PLACE 0.000	0.0000001	±0.0000001	0.0000001	0.0000001	0.0000001	0.0000001	0.0000001	0.0000001
21	PLACE 0.000	0.00000005	±0.00000005	0.00000005	0.00000005	0.00000005	0.00000005	0.00000005	0.00000005
22	PLACE 0.000	0.00000001	±0.00000001	0.00000001	0.00000001	0.00000001	0.00000001	0.00000001	0.00000001
23	PLACE 0.000	0.000000005	±0.000000005	0.000000005	0.000000005	0.000000005	0.000000005	0.000000005	0.000000005
24	PLACE 0.000	0.000000001	±0.000000001	0.000000001	0.000000001	0.000000001	0.000000001	0.000000001	0.000000001
25	PLACE 0.000	0.0000000005	±0.0000000005	0.0000000005	0.0000000005	0.0000000005	0.0000000005	0.0000000005	0.0000000005
26	PLACE 0.000	0.0000000001	±0.0000000001	0.0000000001	0.0000000001	0.0000000001	0.0000000001	0.0000000001	0.0000000001
27	PLACE 0.000	0.00000000005	±0.00000000005	0.00000000005	0.00000000005	0.00000000005	0.00000000005	0.00000000005	0.00000000005
28	PLACE 0.000	0.00000000001	±0.00000000001	0.00000000001	0.00000000001	0.00000000001	0.00000000001	0.00000000001	0.00000000001
29	PLACE 0.000	0.000000000005	±0.000000000005	0.000000000005	0.000000000005	0.000000000005	0.000000000005	0.000000000005	0.000000000005
30	PLACE 0.000	0.000000000001	±0.000000000001	0.000000000001	0.000000000001	0.000000000001	0.000000000001	0.000000000001	0.000000000001
31	PLACE 0.000	0.0000000000005	±0.0000000000005	0.0000000000005	0.0000000000005	0.0000000000005	0.0000000000005	0.0000000000005	0.0000000000005
32	PLACE 0.000	0.0000000000001	±0.0000000000001	0.0000000000001	0.0000000000001	0.0000000000001	0.0000000000001	0.0000000000001	0.0000000000001
33	PLACE 0.000	0.00000000000005	±0.00000000000005	0.00000000000005	0.00000000000005	0.00000000000005	0.00000000000005	0.00000000000005	0.00000000000005
34	PLACE 0.000	0.00000000000001	±0.00000000000001	0.00000000000001	0.00000000000001	0.00000000000001	0.00000000000001	0.00000000000001	0.00000000000001
35	PLACE 0.000	0.000000000000005	±0.000000000000005	0.000000000000005	0.000000000000005	0.000000000000005	0.000000000000005	0.000000000000005	0.000000000000005
36	PLACE 0.000	0.000000000000001	±0.000000000000001	0.000000000000001	0.000000000000001	0.000000000000001	0.000000000000001	0.000000000000001	0.000000000000001
37	PLACE 0.000	0.0000000000000005	±0.0000000000000005	0.0000000000000005	0.0000000000000005	0.0000000000000005	0.0000000000000005	0.0000000000000005	0.0000000000000005
38	PLACE 0.000	0.0000000000000001	±0.0000000000000001	0.0000000000000001	0.0000000000000001	0.0000000000000001	0.0000000000000001	0.0000000000000001	0.0000000000000001
39	PLACE 0.000	0.00000000000000005	±0.00000000000000005	0.00000000000000005	0.00000000000000005	0.00000000000000005	0.00000000000000005	0.00000000000000005	0.00000000000000005
40	PLACE 0.000	0.00000000000000001	±0.00000000000000001	0.00000000000000001	0.00000000000000001	0.00000000000000001	0.00000000000000001	0.00000000000000001	0.00000000000000001
41	PLACE 0.000	0.000000000000000005	±0.000000000000000005	0.000000000000000005	0.000000000000000005	0.000000000000000005	0.000000000000000005	0.000000000000000005	0.000000000000000005
42	PLACE 0.000	0.000000000000000001	±0.000000000000000001	0.000000000000000001	0.000000000000000001	0.000000000000000001	0.000000000000000001	0.000000000000000001	0.000000000000000001
43	PLACE 0.000	0.0000000000000000005	±0.0000000000000000005	0.0000000000000000005	0.0000000000000000005	0.0000000000000000005	0.0000000000000000005	0.0000000000000000005	0.0000000000000000005
44	PLACE 0.000	0.0000000000000000001	±0.0000000000000000001	0.0000000000000000001	0.0000000000000000001	0.0000000000000000001	0.0000000000000000001	0.0000000000000000001	0.0000000000000000001
45	PLACE 0.000	0.00000000000000000005	±0.00000000000000000005	0.00000000000000000005	0.00000000000000000005	0.00000000000000000005	0.00000000000000000005	0.00000000000000000005	0.00000000000000000005
46	PLACE 0.000	0.00000000000000000001	±0.00000000000000000001	0.00000000000000000001	0.00000000000000000001	0.00000000000000000001	0.00000000000000000001	0.00000000000000000001	0.00000000000000000001
47	PLACE 0.000	0.000000000000000000005	±0.000000000000000000005	0.000000000000000000005	0.000000000000000000005	0.000000000000000000005	0.000000000000000000005	0.000000000000000000005	0.000000000000000000005
48	PLACE 0.000	0.000000000000000000001	±0.000000000000000000001	0.000000000000000000001	0.000000000000000000001	0.000000000000000000001	0.000000000000000000001	0.000000000000000000001	0.000000000000000000001
49	PLACE 0.000	0.0000000000000000000005	±0.0000000000000000000005	0.0000000000000000000005	0.0000000000000000000005	0.0000000000000000000005	0.0000000000000000000005	0.0000000000000000000005	0.0000000000000000000005
50	PLACE 0.000	0.0000000000000000000001	±0.0000000000000000000001	0.0000000000000000000001	0.0000000000000000000001	0.0000000000000000000001	0.0000000000000000000001	0.0000000000000000000001	0.0000000000000000000001
51	PLACE 0.000	0.00000000000000000000005	±0.00000000000000000000005	0.00000000000000000000005	0.00000000000000000000005	0.00000000000000000000005	0.00000000000000000000005	0.00000000000000000000005	0.00000000000000000000005
52	PLACE 0.000	0.00000000000000000000001	±0.00000000000000000000001	0.00000000000000000000001	0.00000000000000000000001	0.00000000000000000000001	0.00000000000000000000001	0.00000000000000000000001	0.00000000000000000000001
53	PLACE 0.000	0.000000000000000000000005	±0.000000000000000000000005	0.000000000000000000000005	0.000000000000000000000005	0.000000000000000000000005	0.000000000000000000000005	0.000000000000000000000005	0.000000000000000000000005
54	PLACE 0.000	0.000000000000000000000001	±0.000000000000000000000001	0.000000000000000000000001	0.000000000000000000000001	0.000000000000000000000001	0.000000000000000000000001	0.000000000000000000000001	0.000000000000000000000001
55	PLACE 0.000	0.0000000000000000000000005	±0.0000000000000000000000005	0.0000000000000000000000005	0.0000000000000000000000005	0.0000000000000000000000005	0.0000000000000000000000005	0.0000000000000000000000005	0.0000000000000000000000005
56	PLACE 0.000	0.0000000000000000000000001	±0.0000000000000000000000001	0.0000000000000000000000001	0.0000000000000000000000001	0.0000000000000000000000001	0.0000000000000000000000001	0.0000000000000000000000001	0.0000000000000000000000001
57	PLACE 0.000	0.00000000000000000000000005	±0.00000000000000000000000005	0.00000000000000000000000005	0.00000000000000000000000005	0.00000000000000000000000005	0.00000000000000000000000005	0.00000000000000000000000005	0.00000000000000000000000005
58	PLACE 0.000	0.00000000000000000000000001	±0.00000000000000000000000001	0.00000000000000000000000001	0.00000000000000000000000001	0.00000000000000000000000001	0.00000000000000000000000001	0.00000000000000000000000001	0.00000000000000000000000001
59	PLACE 0.000	0.000000000000000000000000005	±						