

**POTAIN®**

# Hup 32-27

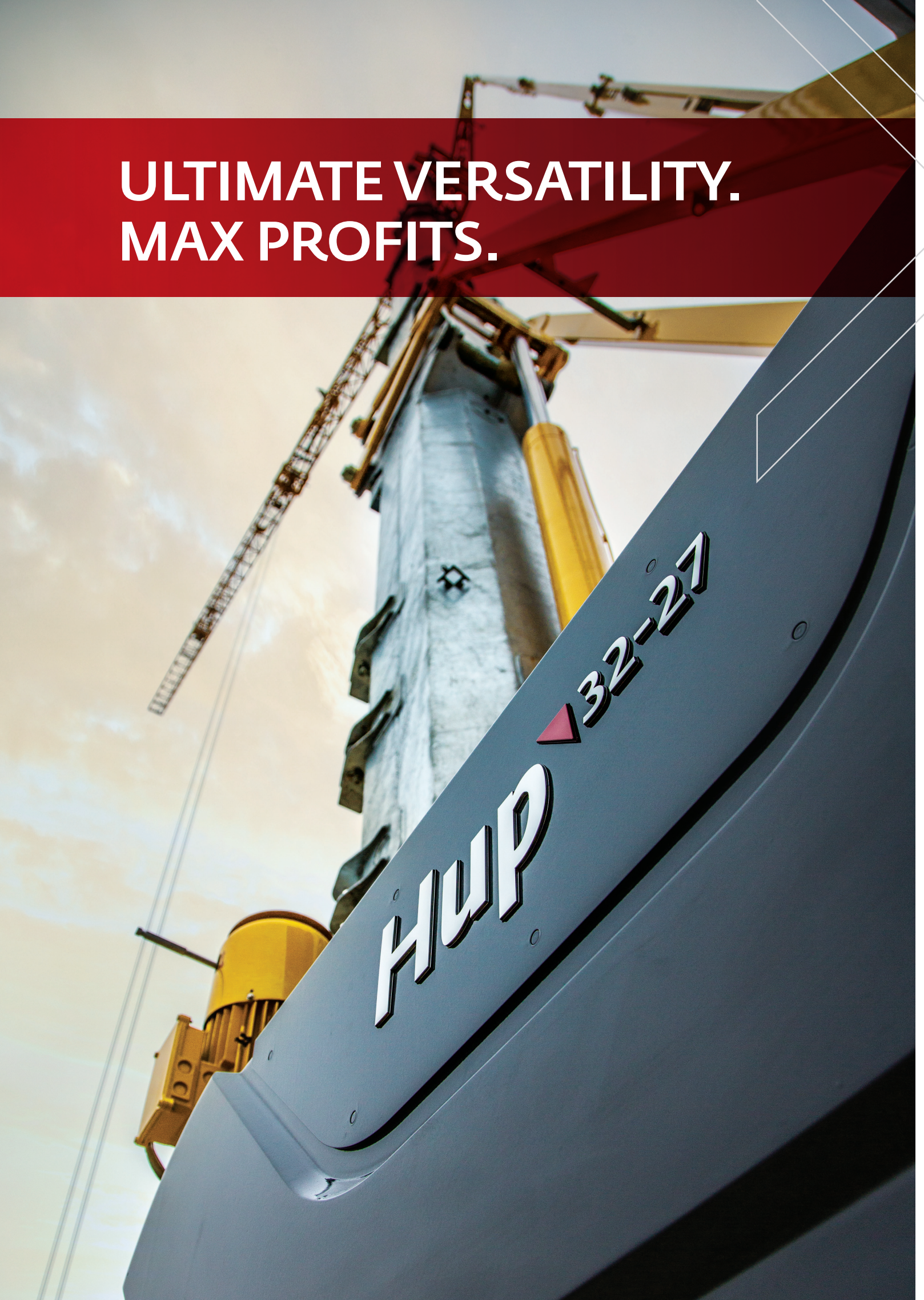
**ULTIMATE VERSATILITY.  
MAX PROFITS.**



**ULTIMATE VERSATILITY.  
MAX PROFITS.**

**HWP**

**32-27**



## Maximize your profits with more job opportunities than ever before.

Why own more cranes than you need? With its revolutionary design, the new Potain Hup 32-27 self-erecting crane can help you get more jobs through higher crane utilization. That creates a higher return on your crane investment.

- > Maximum reach for class-leading performance
- > Unmatched compact design for challenging jobsites and easy transport
- > Multiple integrated configurations for various jobsite needs
- > New Smart Set-up software for simplified crane erection using the exclusive Potain remote control



# MAXIMUM REACH FOR CLASS-LEADING PERFORMANCE

New crane technology offers multiple configurations for more lifting options.

One mast provides two telescoping heights and four jib positions plus a potential partial jib. This versatility enables 20 possible crane configurations.

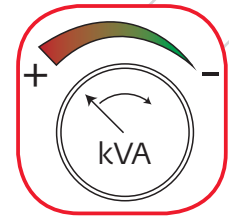
Other performance capabilities include:

- **New High Performance Lifting (HPL) technology** delivers class-leading ultra high-speed lifting of maximum loads
- **New High Performance Slewing (HPS) technology** provides greater accuracy and responsiveness in crane movements for better operator control during load swing

- **High-speed lifting** with permanent four falls reeving; speed is automatically adapted to the load



- **New exclusive Power Control** functionality of 480V 3-phase provides the ability to adapt to the power available on site



- **Drive Control**  
Choice of micro-speed on the remote control delivers high precision hoisting speeds

## Multiple integrated configurations for various jobsite needs

- Telescoping, integrated masts give you the option of working at heights of 21 m (70 ft) or 27 m (88.6 ft)



- Automatic erection system requires no extra mast section to greatly reduce setup time



✓ Four-position, 32 m (105 ft) jib provides extra versatility. Can be used in horizontal position or in three raised angles of 10°, 20° and 30°



**NEW**

## POTAIN Hup 32-27 Self-erecting Crane

- > Max capacity: 4 t (4.4 USt)
- > Max radius: 32 m (105 ft)
- > Max HUH with horizontal jib: 21 m (70 ft) / 27 m (89 ft)
- > Max HUH at 30° raised jib: 40 m (131.2 ft)
- > Max load at jib end: 1 t (1.1 USt)
- > Footprint: 4 m x 4 m or 3,5 m x 4,42 m (13.1 ft x 13.1 ft) or (11.5 ft x 14.5 ft)
- > Rear slewing radius: 2.25 m (7.38 ft) / 2.75 (9.02 ft)

# UNMATCHED COMPACT DESIGN FOR CHALLENGING JOBSITES AND EASY TRANSPORT

The all-new Potain Hup 32-27 self-erecting crane delivers a class-leading compact footprint. This innovative compact design also provides jobsite maneuverability and set up with exclusive unfolding movement and ground leveling capability. Ease of transport with dimensions ideal for shipping is another key benefit the Hup 32-27.

- > 4 m (13.1 ft) maximum height and 12 m (39.4 ft) length for easy transport in high-cube container
- > The Hup 32-27 can be delivered to the jobsite using the usual Potain transport axles for the Potain Igo



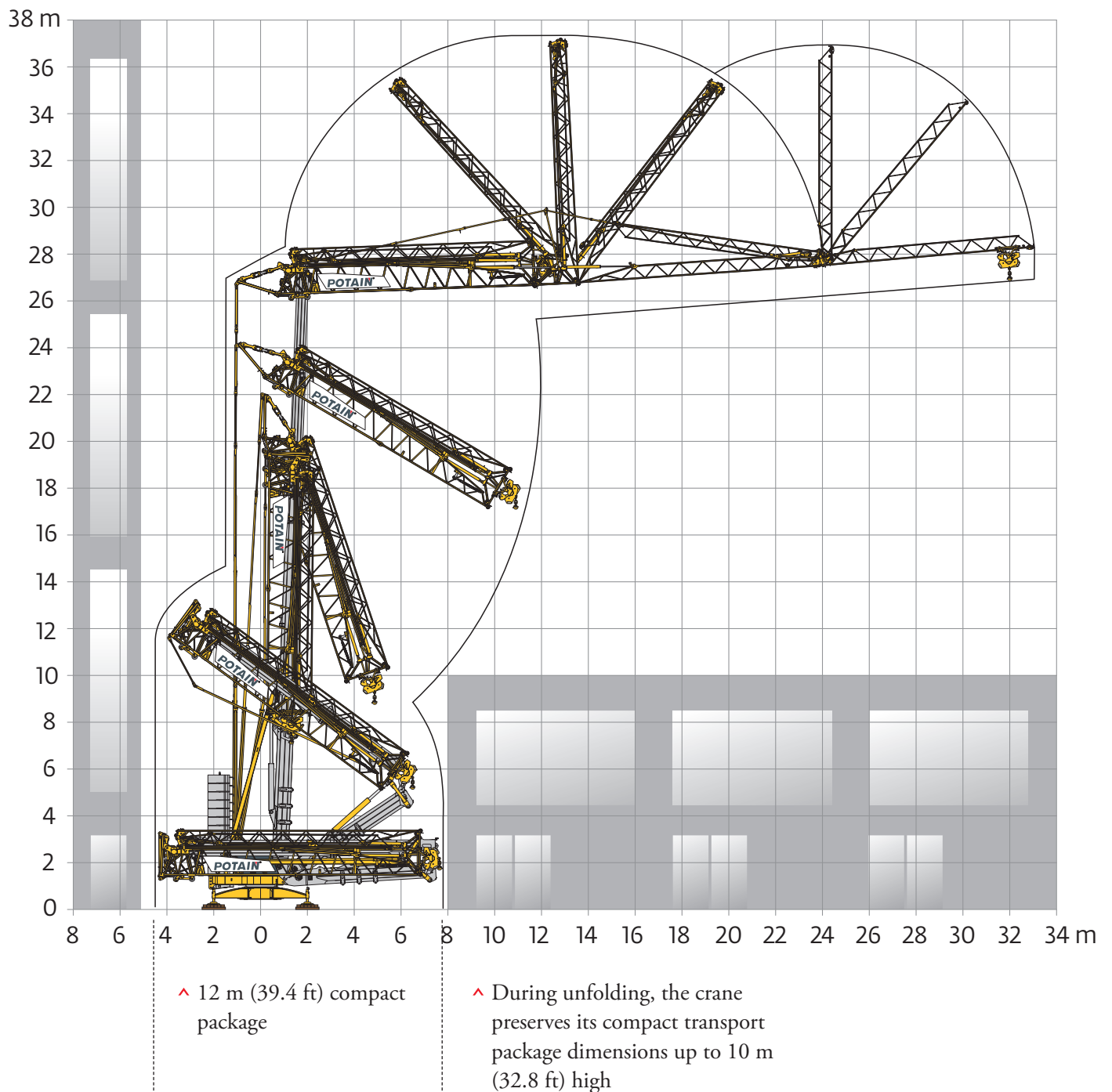
- ^ New adjustable system for simple and efficient setup on ground with up to 8 percent slope



- < Easy to open and access electrical panel for convenient serviceability

## Innovative movement technology enables unfolding in narrow and compact areas

- ∨ Jib unfolds over the top to preserve space under the crane when working next to buildings







# EXCLUSIVE REMOTE CONTROL CAPABILITY

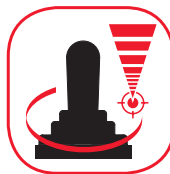
The newly designed remote control and functions makes the Potain Hup 32-27 self-erecting crane more user-friendly. Offering greater productivity and adaptability to various jobsite tasks ranging from simple lifts and concrete pouring to precision lifts.

A 100 percent remote control-powered erection and piloting delivers convenient and secure operation.



## Drive Control

Three operating profiles on the remote control allow crane operators to customize crane behavior to their preference: **High Precision, Standard** and **Dynamic**.



- ^ New ergonomics include:
  - New full color screen
  - Jog dial screen navigation

- > Maintenance and warning indicator for trolley, hoisting, slewing and lubrication levels

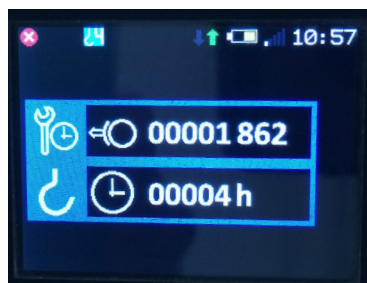
Main screen



Current radius indicator



Hoisting and operation indicator



- > Times brake applied
- > Hours of operation

Crane maintenance support



- ^ Integrated diagnostic tool for crane maintenance support

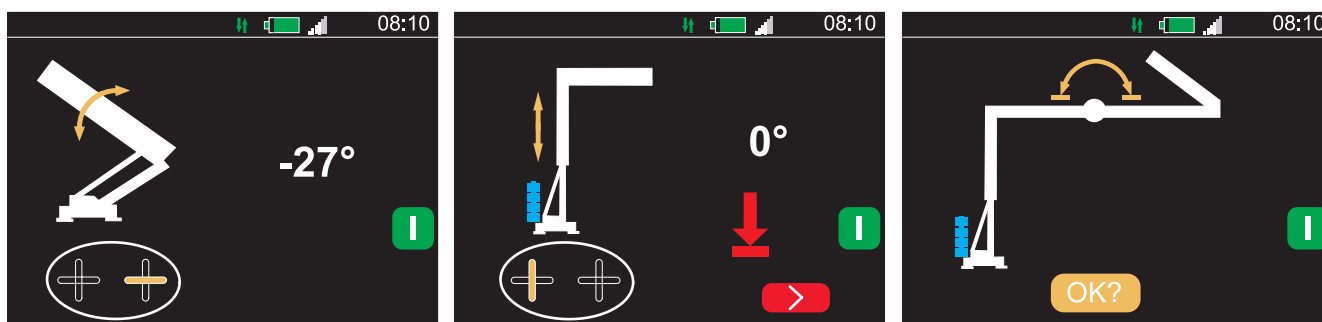
# NEW SMART SET-UP SOFTWARE FOR SIMPLIFIED CRANE ERECTION

## Smart Set-up

Smart Set-up is the exclusive Potain software that provides an intuitive user interface to simplify folding and unfolding the Hup 32-27 through step-by-step directions clearly visible on the remote control screen.



▼ **New Smart Set-up** software with intuitive user interface for simplified, step-by-step crane erection





Remote controlled crane  
erection is quick, convenient  
and secure.



## Manitowoc Cranes

### Regional headquarters

#### Americas

Manitowoc, Wisconsin, USA

Tel: +1 920 684 6621

Fax: +1 920 683 6277

Shady Grove, Pennsylvania, USA

Tel: +1 717 597 8121

Fax: +1 717 597 4062

#### Europe, Middle East, Africa

Dardilly, France

Tel: +33 (0)4 72 18 20 20

Fax: +33 (0)4 72 18 20 00

#### China

Shanghai, China

Tel: +86 21 6457 0066

Fax: +86 21 6457 4955

#### Greater Asia-Pacific

Singapore

Tel: +65 6264 1188

Fax: +65 6862 4040



### Manitowoc Crane Care when you need it.

The assurance of the world's most advanced crane service and support to get you back to work fast.



### Manitowoc Finance helps you get right to work generating profits for your business.

Financial tools that help you capitalize on opportunity with solutions that fit your needs.

This document is non-contractual. Constant improvement and engineering progress make it necessary that we reserve the right to make specification, equipment, and price changes without notice. Illustrations shown may include optional equipment and accessories and may not include all standard equipment.