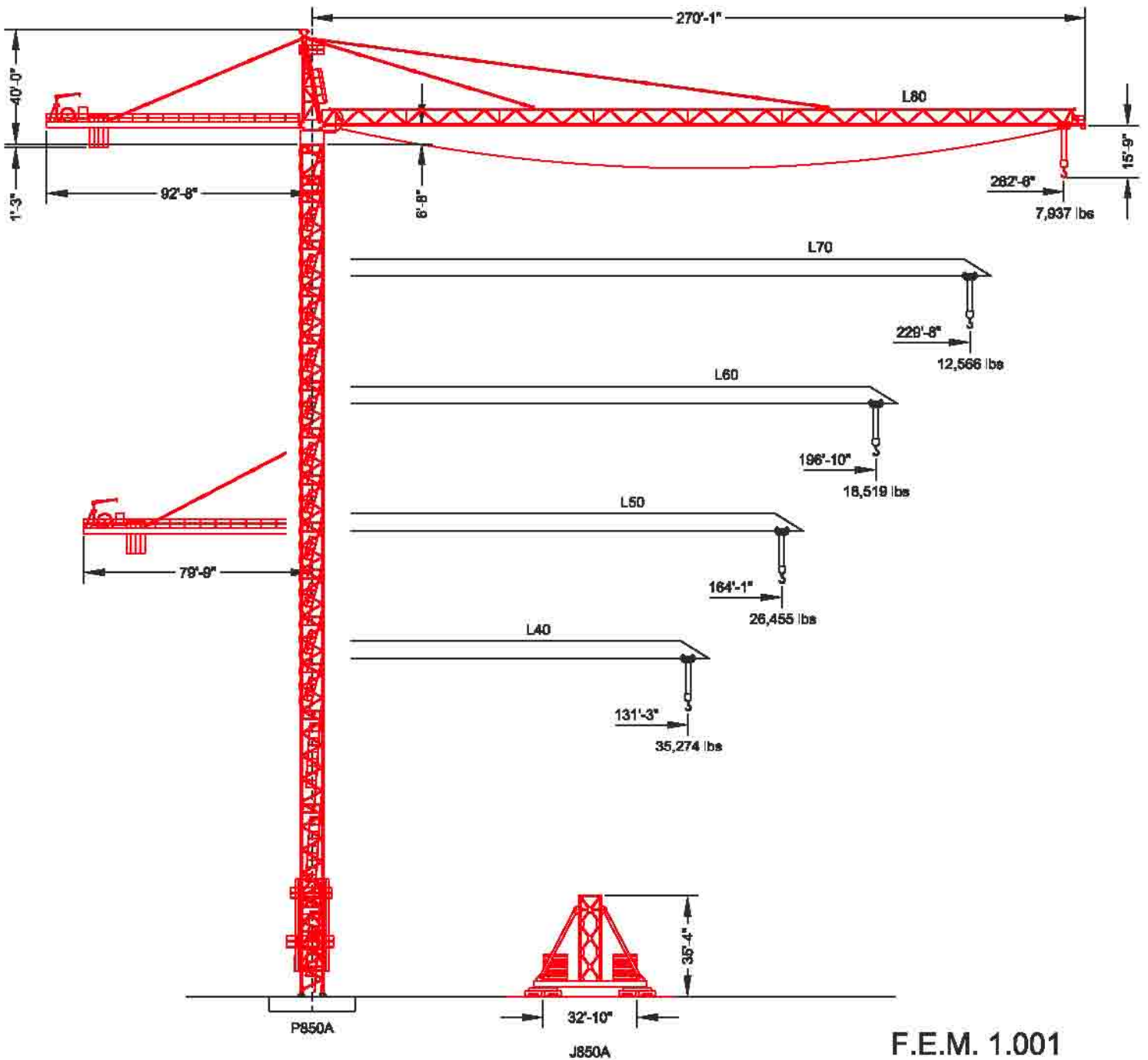


MD 560-M20

Maximum Capacity = 44,092 lbs

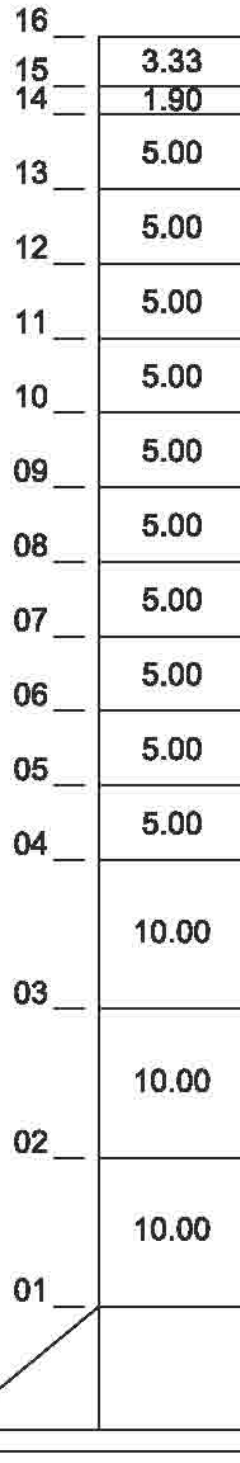
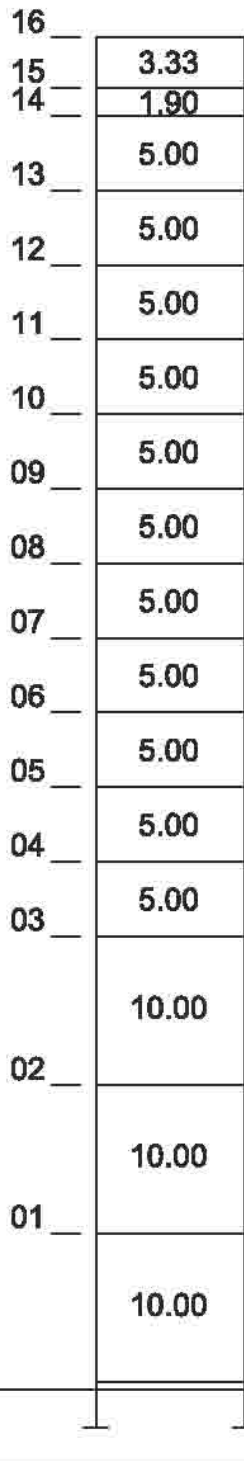


F.E.M. 1.001

Maximum Free-Standing Hook Heights

HH = 288'-6"

HH = 305'-9"



P850A

J850A

External Climbing

Jib Configurations: L40 thru L80 (131'-3" thru 262'-6")

P850A Foundation Anchors

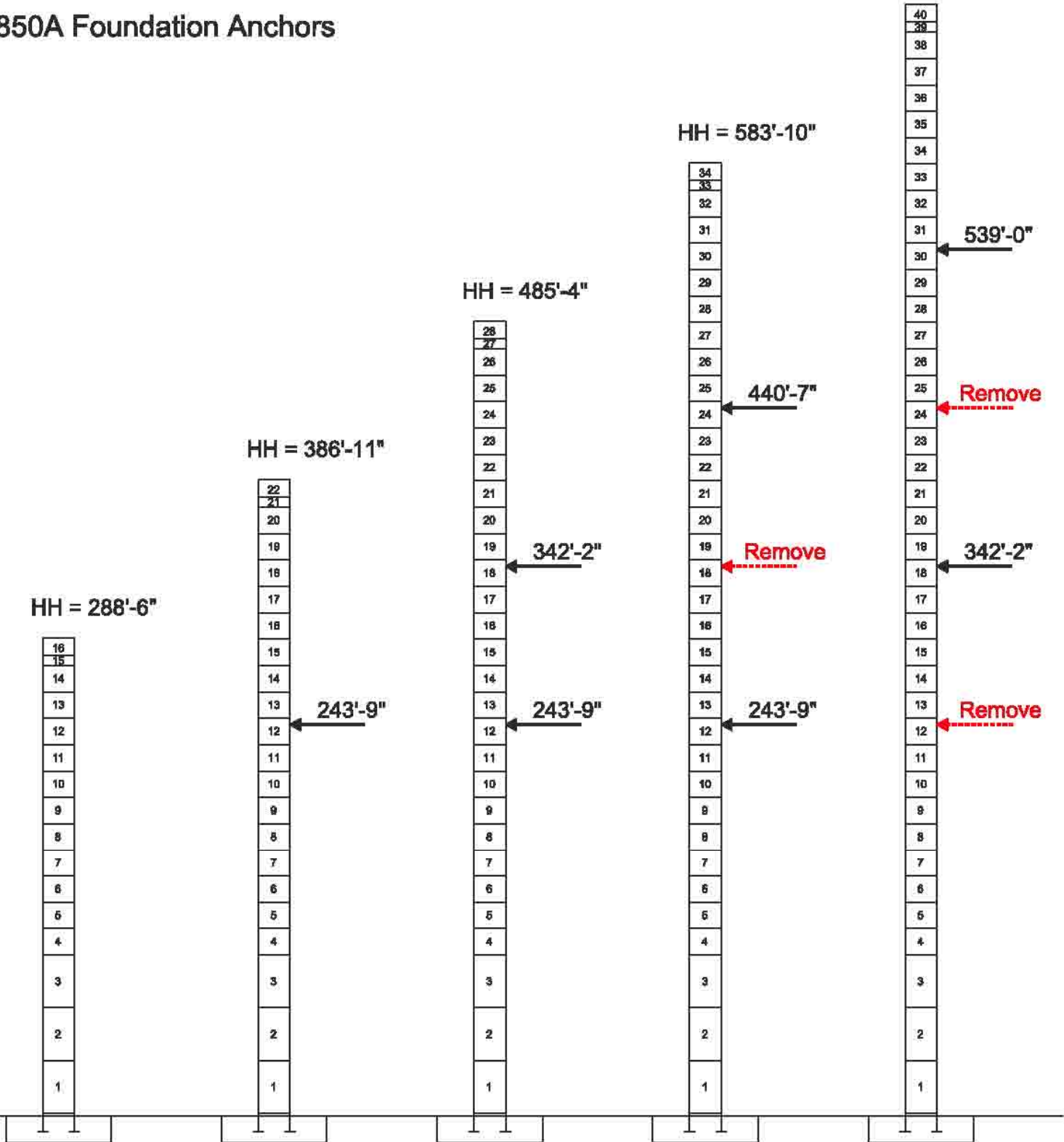
HH = 682'-3"

HH = 583'-10"

HH = 485'-4"

HH = 386'-11"

HH = 288'-6"



Rated Load Chart

Hook Radius	Capacity (lbs)				
	Jib Lengths				
	262'-6"	229'-8"	196'-10"	164'-1"	131'-3"
20'-0"	44,092	44,092	44,092	44,092	44,092
30'-0"	44,092	44,092	44,092	44,092	44,092
40'-0"	44,092	44,092	44,092	44,092	44,092
50'-0"	44,092	44,092	44,092	44,092	44,092
60'-0"	44,092	44,092	44,092	44,092	44,092
70'-0"	40,308	44,092	44,092	44,092	44,092
80'-0"	34,591	43,537	44,092	44,092	44,092
90'-0"	30,203	38,110	44,092	44,092	44,092
100'-0"	26,728	33,812	40,390	44,092	44,092
110'-0"	23,909	30,325	36,282	41,552	42,971
120'-0"	21,576	27,438	32,883	37,699	38,995
130'-0"	19,612	25,010	30,022	34,456	35,650
131'-3"	19,391	24,737	29,701	34,092	35,274
140'-0"	17,937	22,939	27,583	31,691	
150'-0"	16,492	21,151	25,477	29,304	
160'-0"	15,232	19,592	23,641	27,223	
164'-1"	14,767	19,017	22,964	26,455	
170'-0"	14,123	18,221	22,026		
180'-0"	13,141	17,006	20,595		
190'-0"	12,264	15,921	19,317		
196'-10"	11,716	15,243	18,519		
200'-0"	11,477	14,947			
210'-0"	10,766	14,068			
220'-0"	10,120	13,270			
229'-8"	9,552	12,566			
230'-0"	9,532				
240'-0"	8,994				
250'-0"	8,500				
260'-0"	8,044				
262'-6"	7,937				

Max. Load Radius					
From	10'-2"	10'-2"	10'-2"	10'-2"	10'-2"
To	64'-9"	79'-1"	92'-6"	104'-4"	107'-6"

Red line indicates the division between 4-part line and 2-part line

Mechanical Data

Function	Hoist Type	Speed vs Weight	2-part				4-part				Motor (hp)	Motor (kW)	Rope Length (ft)	
			1st Gear	2nd Gear	3rd Gear	4th Gear	1st Gear	2nd Gear	3rd Gear	4th Gear				
Hoist	102 S5.0 L680	ft/min lbs	184 22,046	293 13,779	460 8,267	734 4,519	92 44,092	146 27,557	230 16,534	367 9,039	164	122	2230	
Trolley	9.0 kW-WB	ft/min	0 to 279									12.1	9.0	
Swing	5.2 kW-WB	rpm	0.73				Jib L40 Jibs L50 - L80				2 x 7.0 3 x 7.0	2 x 5.2 3 x 5.2		

Power Requirements: 480 V (+6% or -10%) 60 Hz measured at turn table.

Amperage: 102 S5.0: 246 Amp (3 phase service with ground)

Note: Values given under "Rope Length" are for drum spooling capacity only. Use the following equation to calculate hook heights.

$$RRL = DRL + (N \times RLH) + 30\text{-ft}$$

Dead Rope Lengths

L80 466-ft

L70 433-ft

L60 400-ft

L50 367-ft

L40 335-ft

RRL = Required Rope Length

DRL = Dead Rope Length

N = 2 for two-part reeving

N = 4 for four-part reeving

*RLH = Required Lifting Height.

Note: A hook height is the distance from the bottom of hook to the top of crane foundation. RLH will equal the hook height unless special lifts are made below the top of crane footing such as the crane making a pick down in a hole. The RLH in this case would be the hook height plus the depth of the hole.

Example:

A MD 560 with a hook height of 280-ft, full length jib, hook block in 4-part configuration, and a 40-ft drop from the crane foundation to the lowest point in the lay down yard.

$$RRL = 466 + (4 \times (280 + 40)) + 30 = 1,776\text{-ft}$$

Constant improvement and engineering progress make it necessary that we reserve the right to make specification, equipment, and price changes without notice. Illustrations shown may include optional equipment and accessories, and may not include all standard equipment. Product brochures are for illustration purposes only. Contact the manufacturer or consult the operation manual for specific details concerning this product.

Manitowoc Crane Company, Inc.

US Tower Crane Division
1565 Buchanan Trail East
Shady Grove, PA 17256-0021, USA

Tel: 717-597-8121
Fax: 717-597-4062



MD 560-M20