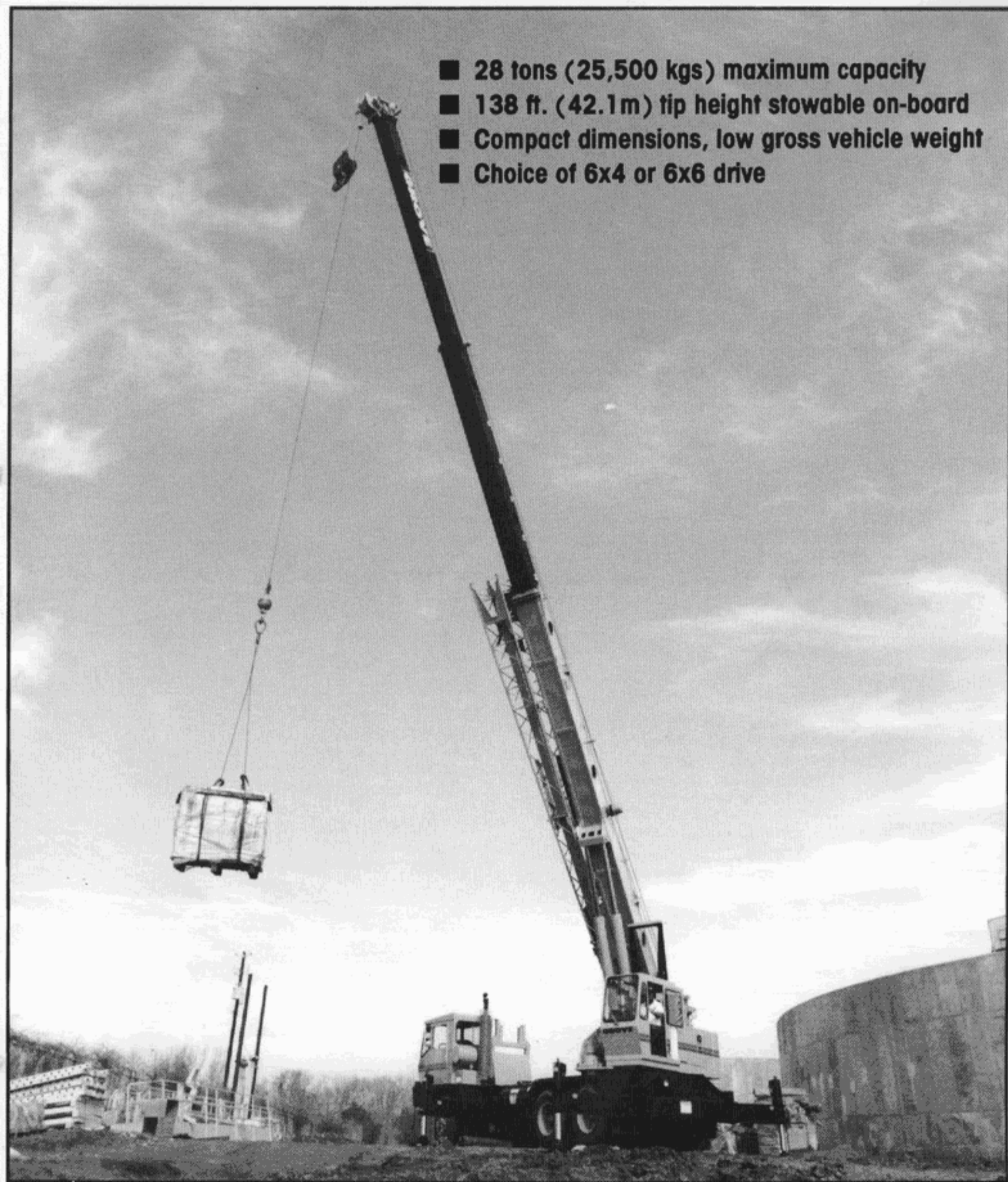




TMS528B

Truck-mounted hydraulic crane

- 28 tons (25,500 kgs) maximum capacity
- 138 ft. (42.1 m) tip height stowable on-board
- Compact dimensions, low gross vehicle weight
- Choice of 6x4 or 6x6 drive



Superstructure specifications

Boom	32 ft. to 80 ft. (9.8m - 24.4m) three section Trapezoidal† full power boom. Telescoping is mechanically synchronized with single lever control. Telescopic sections slide on adjustable and replaceable nylatron wear pads. Maximum tip height: 86 ft. (26.2m).
Swingaway Extension	30 ft. (9.3m) lattice swingaway boom extension stows alongside base boom section when not in use, offsettable at 2°, 15° or 30°. Maximum tip height: 115 ft. (35.1m).
*Optional Telescopic Swingaway	30 ft. to 54 ft. (9.3m-16.4m) telescopic lattice swingaway extension with offset lengths offsettable at 0°, 15° or 30°. Stows alongside base boom when not in use. Maximum tip height: 138 ft. (42.1m).
Boom Nose	Four sheaves mounted on heavy duty tapered roller bearings with removable pin-type rope guards. *Optional removable auxiliary boom nose with removable pin type rope guard.
Boom Elevation	Dual double acting hydraulic cylinders with integral holding valve provides elevation from -2 1/2° to 75°.
A2BLA	Audio-visual (light/buzzer) warning system and Grove control lever lockout system with anti-two block and boom angle and length indication.
Cab	Full vision, all steel fabricated with accoustical lining and tinted safety glass throughout. Dash panel incorporates gauges for all engine functions. Other standard features include: hinged skylight, sliding left side door and sliding right side window, electric windshield wash-wipe, circulating air fan, heater, swing horn, fire extinguisher, seat belt. *Optional items: electric skylight wiper and air conditioning.
Swing	Roller bearing swing circle with 360° continuous rotation. Grove planetary "glide swing" with foot actuated disc brake, spring applied hydraulically released park brake and *optional 360° position positive turntable lock. Combination controls provided for hand or foot operation. Swing speed 3.0 RPM.
Counterweight	Fixed position pinned to turntable. (Weight varies depending on hoist configuration).

HYDRAULIC SYSTEM

Pumps	One, 3-section gear pump driven off transmission PTO with manual pump disconnect. Combined capacity 112.5 GPM (426 lpm).
Valves	Precision four way double acting control valves, 3 individual valve banks permit simultaneous control of multiple crane functions.
Filter	Suction line type, full flow with by-pass protection and filter by-pass indicator, replaceable cartridge, 7/17/22 micron filtration rating.
Reservoir	88 gallons (333 L) with spin-on breather filter, external sight gauge, clean out access, strap mounted to frame.
*Optional Oil Cooler	Full flow, fin and tube, oil to air.

HOIST SPECIFICATIONS

Power up and down, equal speed, planetary reduction with integral automatic brake and electronic hoist drum rotation indicator.

Make/Model		Main Hoist H015B-20(H) or *Aux. Hoist H015B-16	
		Main	Auxiliary
Maximum single line speed	Bottom layer	298 FPM (91m/min)	161 FPM (49m/min)
	Intermediate layer	352 FPM (107m/min)	190 FPM (58m/min)
	Top layer	379 FPM (116m/min)	205 FPM (62m/min)
Maximum single line pull	Bottom layer	8,496 lbs. (3854 kg)	8,496 lbs. (3854 kg)
	Intermediate layer	7,194 lbs. (3263 kg)	7,194 lbs. (3263 kg)
	Top layer	6,681 lbs. (3031 kg)	6,681 lbs. (3031 kg)
Maximum permissible line pull w/5:1 F.O.S.		8,496 lbs. (3854 kg)	8,496 lbs. (3854 kg)
Maximum rope stowage		450 ft. of 5/8" dia. rope (137m of 16mm)	

†Patented Grove feature or patent pending.
*Denotes optional equipment.

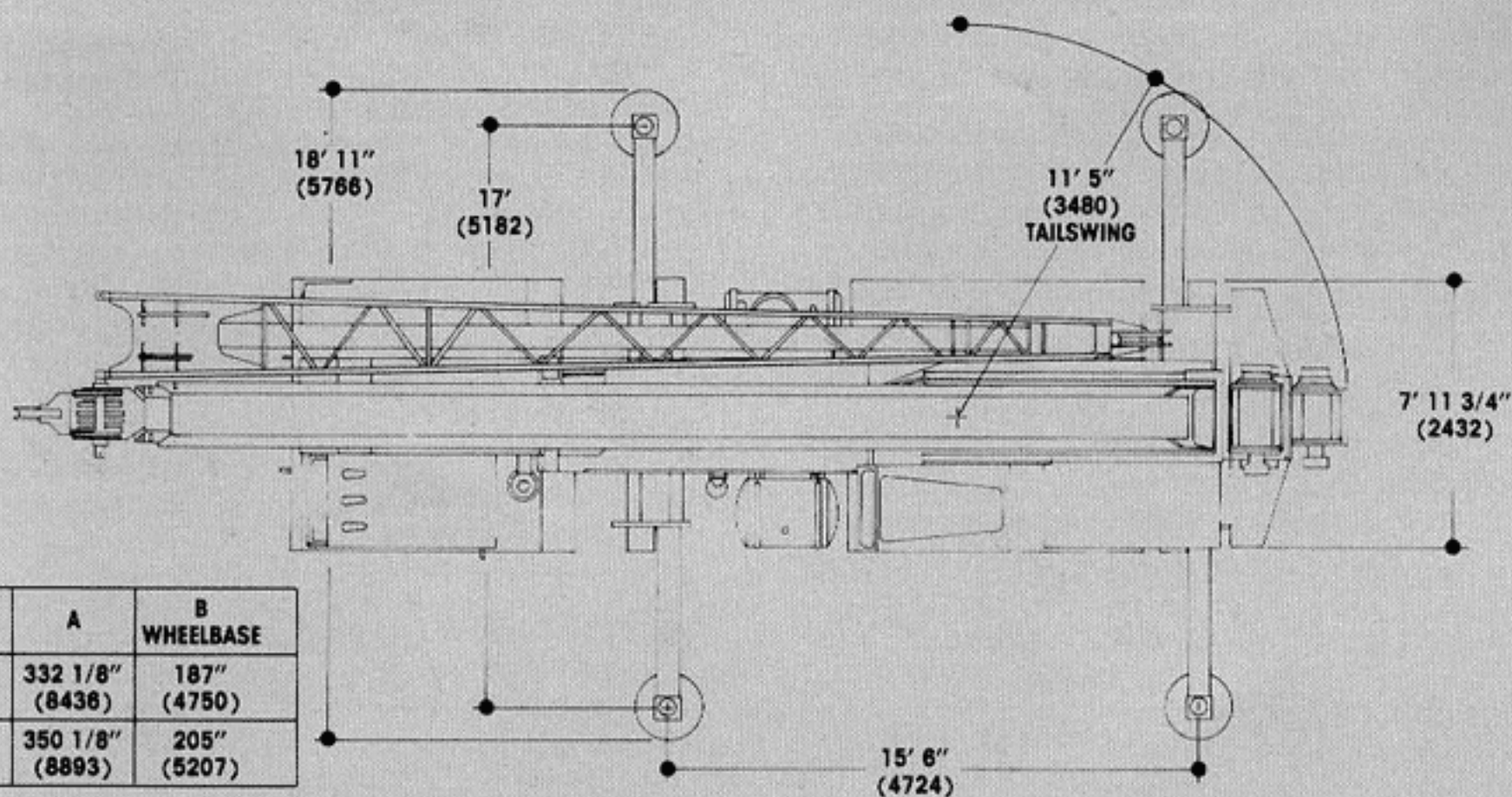
Carrier specifications

Frame	High strength alloy steel all welded box-type construction with integral outrigger housings and front/rear lifting, towing and tie down lugs.
Outrigger System	Hydraulic single stage double box telescopic beam and jack outriggers with integral holding valves. All steel fabricated quick release type outrigger floats 24 in. (610mm) diameter. Standard fifth front stabilizer for 360° duties.
Outrigger Controls	Located in the superstructure cab. Push button controls requiring two-handed operation for safety. Crane level indicator (sight bubble) located in cab.
Engine	GM8.2L eight cylinder turbo-charged water cooled diesel, 500 cu. in. (8.2 L), 205 hp (153 kw) (Gross) @ 2800 RPM. Maximum net torque 383 ft. lbs. (53 kg/m) @ 1700 RPM.
Optional Engine	Cummins 6CT8.3 six cylinder turbo-charged water cooled diesel, 505 cu. in. (8.3 L) 210 hp (157 kw) (Gross) @ 2200 RPM. Maximum net torque 605 ft. lbs. (84 kg/m) @ 1500 RPM.
Fuel Tank Capacity	60 gallon (227 L)
Electrical System	Two 12 volt - maintenance free batteries, 24 volt starting.
Drive	6 x 4 or optional 6 x 6.
Steering	Front axle steering, rack and pinion type with hydraulic assist.
Transmission	Manual with 13 speeds forward, 3 reverse.
Optional Transmission	Allison MT653DR 5 speed automatic transmission (available w/std. GM engine).
Axles	Front: (6 x 4) 1 steer, beam type (6 x 6) 1 steer & drive Rear: 2 & 3 drive axles with inter-axle differential locks.
Suspension	Front axle (1) spring mounted. Rear axles (2 & 3) solid mount tandem with equalizing beam and solid steel saddles.

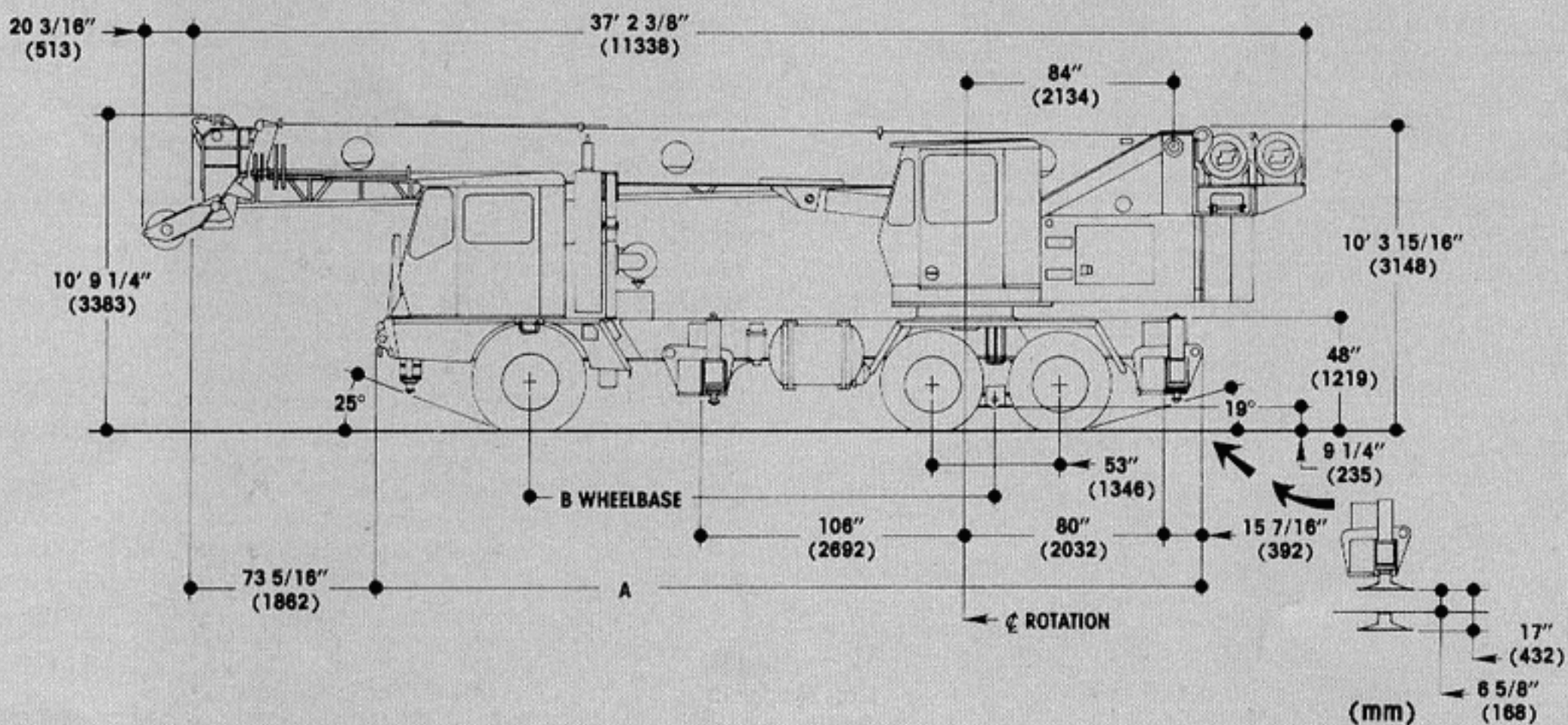
Tires	Front: 15:00x22.5-16PR duplex highway tread tubeless singles. Rear: 9:00x20-10PR highway tread tube-type duals.
Optional Tires	Front: 16.5x22.5-16PR duplex highway tread tubeless and 14/80R20-18PR tube type radial. Rear: 10:00x20-12PR highway tread tube type and 9:00R20-12PR radials.
Brakes	Full air on all wheels. Air dryer provided to preclude moisture accumulation. Spring set emergency brake on all rear axles with emergency release.
Lights	Full lighting including head, tail, braking, reversing, fog, directional and hazard warning lights.
Cab	All steel fabricated with acoustical lining and tinted safety glass throughout. Deluxe fabric covered fully adjustable seat. Complete driving controls and engine instrumentation including tachometer, speedometer, voltmeter, water temp. oil pressure, fuel level, air pressure gauge with A/V warning. Other standard items include hot water heater/defroster, electric windshield wash/wipe, fire extinguisher, seat belt and door and window locks.
Maximum Speed	52 MPH (83.7 kph)
Gross Vehicle Weight & Axle Loads	BASIC STANDARD MACHINE Front: 14,794 lbs. (6,711 kgs) Rear: 31,850 lbs. (14,447 kgs) G.V.W.: 46,644 lbs. (21,158 kgs)
Miscellaneous Standard Equipment	Dual rear view mirrors, hookblock tiedown sling, electronic back-up alarm.
Optional Equipment	Immersion engine block heater, engine low oil pressure/high water temperature, audio visual warning. Tire inflation kit, sling box and tool kit.

(mm)

† Patented Grove feature or patent pending.
* Denotes optional equipment.



MODEL	A	B WHEELBASE
6 x 4	332 1/8" (8436)	187" (4750)
6 x 6	350 1/8" (8893)	205" (5207)



Distributed By:

Constant improvement and engineering progress makes it necessary that we reserve the right to make specification, equipment, and price changes without notice. Illustrations shown may include optional equipment and accessories and may not include all standard equipment.

GROVE MANUFACTURING COMPANY
 Box 21 ■ Shady Grove ■ Pennsylvania 17256
 (717) 597-8121 ■ telex: 842308