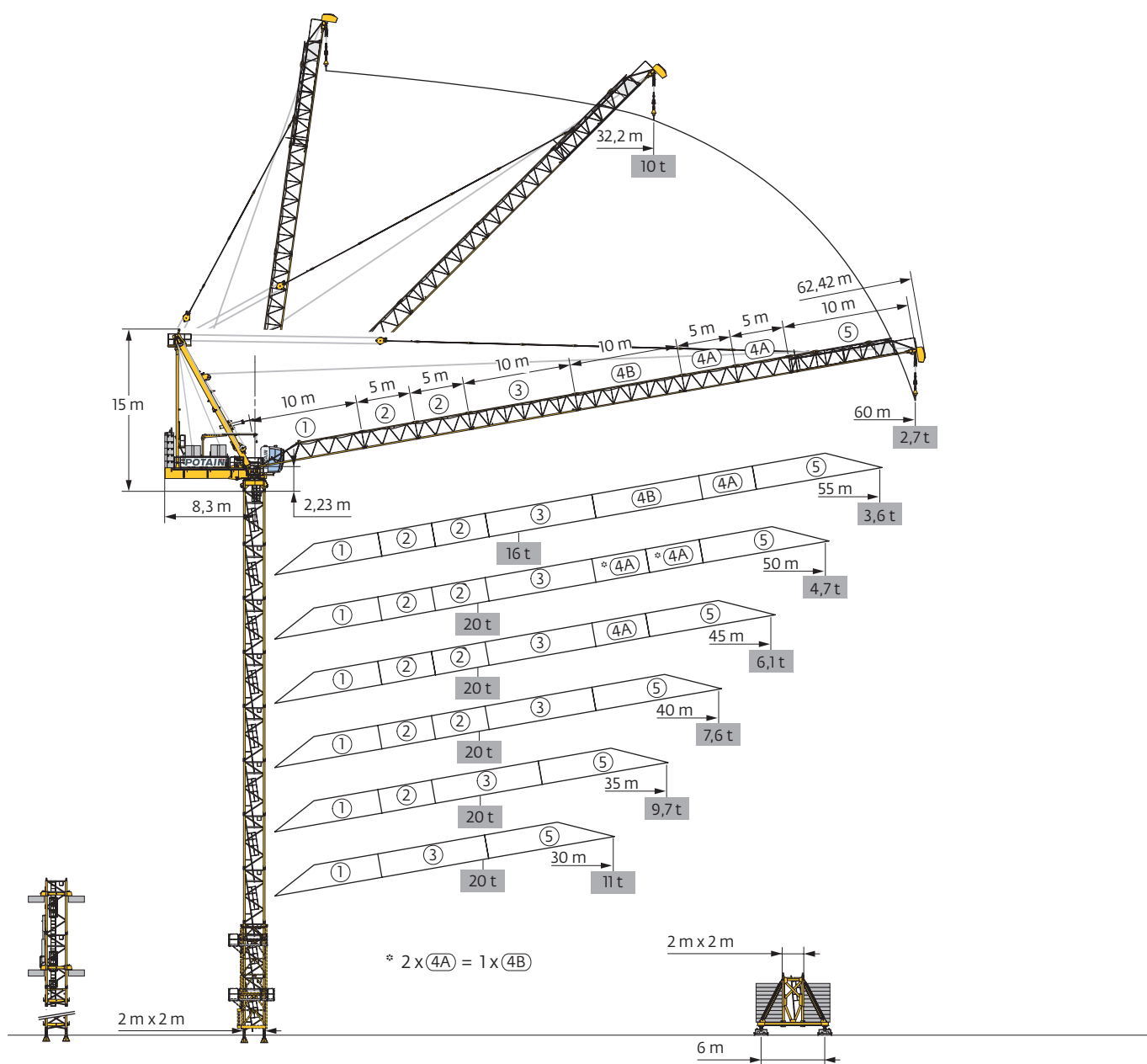


## MR 系列

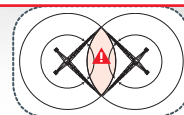
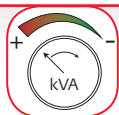
# MR 295 P22A



电源控制功能

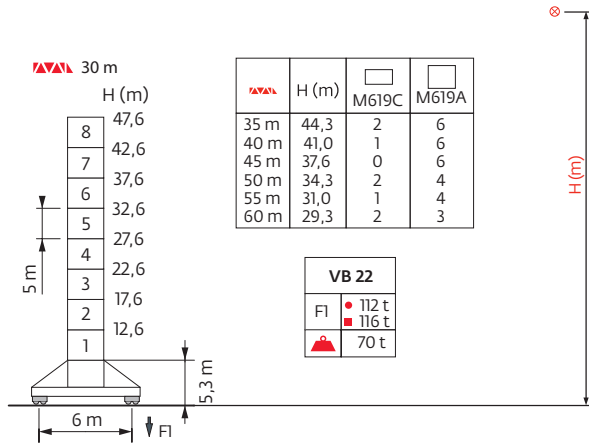
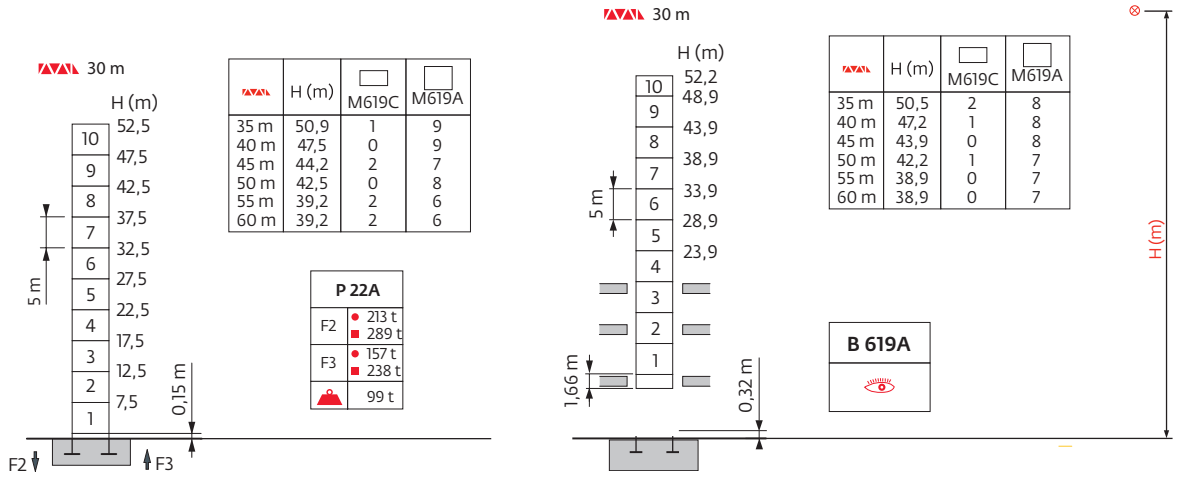
顶部追踪系统

FEM 1.001-A3

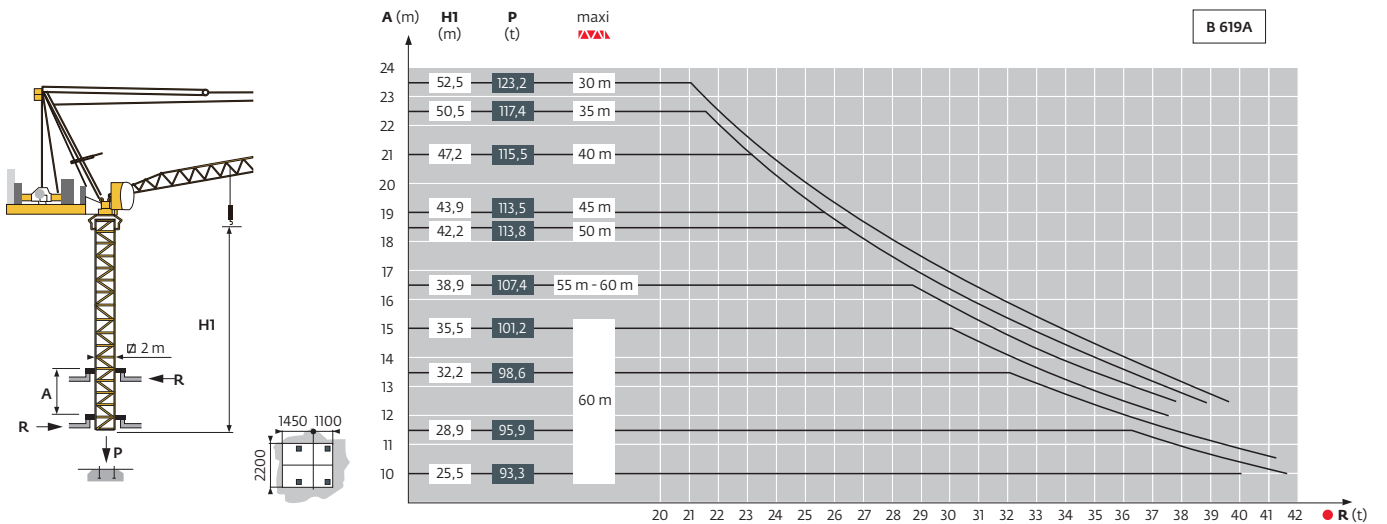


塔身组成 - 反力

2 m



内爬塔机





压重

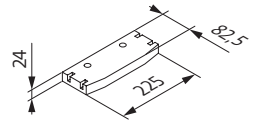
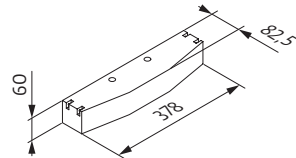
			30 m	35 m	40 m	45 m	50 m	55 m	60 m
2 m		H (m)	47,6	44,3	41,0	37,6	34,3	31,0	29,3
		(t)	120	132	132	132	132	132	132

起重臂重量&平衡臂配重

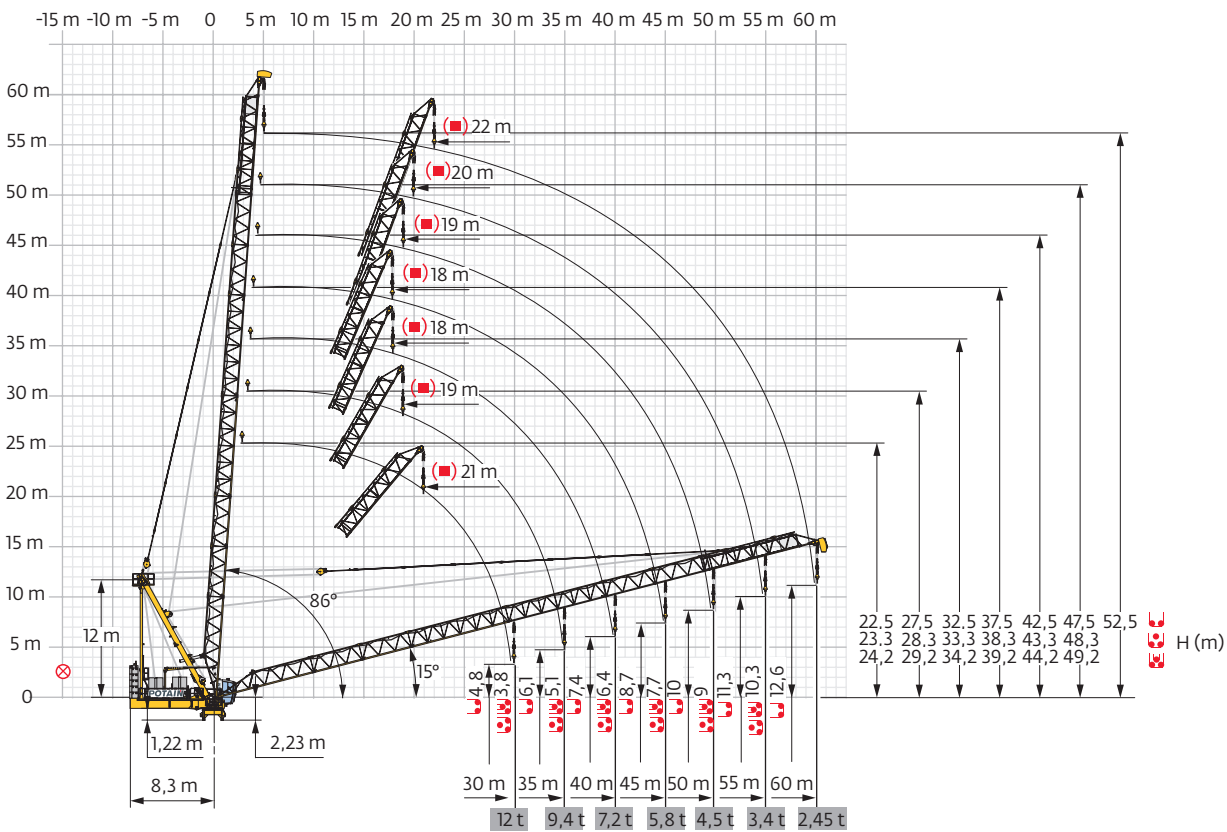
	(kg) (+/- 5%)	100 LVF - 150 LCC			150/180 LVF GH		
		3950 kg	1000 kg	(kg)	3950 kg	1000 kg	(kg)
30 m	4960	5	0	19750	4	3	18800
35 m	5610	5	0	19750	4	3	18800
40 m	6260	5	0	19750	4	3	18800
45 m	7275	5	0	19750	4	3	18800
50 m	8290	5	1	20750	5	0	19750
55 m	7805	5	1	20750	5	0	19750
60 m	8820	5	1	20750	5	0	19750

CBJ - 3950 kg

CBK - 1000 kg

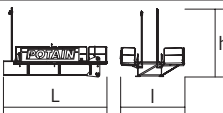
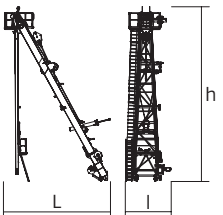
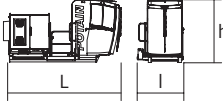
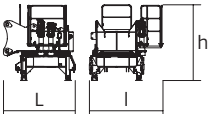
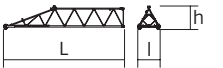
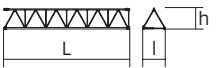

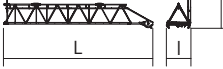
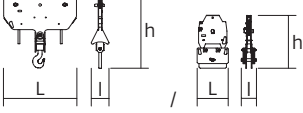
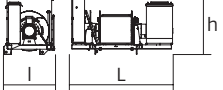
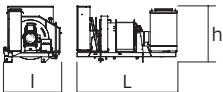


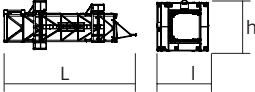
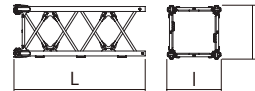
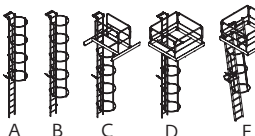
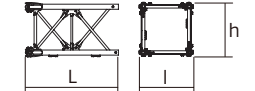
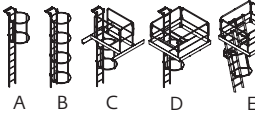
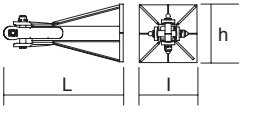
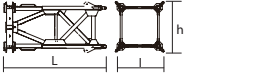
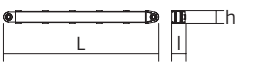
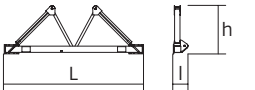
动臂变幅



## 尺寸重量表

塔机回转部分 :  45 m -  33 LVF

塔机回转部分		L (m)	l (m)	h (m)	kg (+/- 5%)
平衡臂		7,43	5,15	4,7	7000
塔帽		7,6	3,3	13	7015
驾驶室	 Ultra View	4,74	1,86	2,53	1840
回转机构	 $\square$ 2 m	2,98	2,28	3,14	9150
起重臂根部节	 ①	10,27	1,9	1,99	1470
起重臂节	 ③ ④	10,17	1,81	1,67	1230
		10,17	1,81	1,65	1015
起重臂节	 ② ⑤	5,17	1,81	1,67	650
		5,17	1,81	1,65	530
起重臂节	 ⑥	11,79	1,83	1,97	1360
吊钩		1,8	0,44	2,67	493
		0,62	0,18	1,15	407
起升机构 (+钢丝绳)	 100 LVF 150/180 LVF GH 150 LCC	3,18 4,27 3,75	1,6 2 1,65	1,88 2,34 1,89	4455 9230 5605
变幅机构	 100 VVF	3,16	1,77	1,88	3000

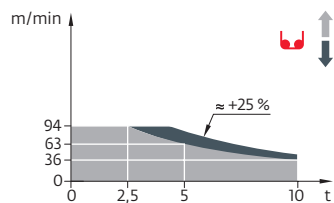
顶升装置		L (m)	I (m)	h (m)	kg (+/- 5%)
顶升套架		11,5	4,21	4,36	8235
塔身节					
M619 A	 	5,32	2,13	2,13	3517
		-	-	-	47
		-	-	-	55
		-	-	-	122
		-	-	-	165
		-	-	-	148
M619 C	 	3,66	2,13	2,13	2492
		-	-	-	29
		-	-	-	41
		-	-	-	98
		-	-	-	140
		-	-	-	138
塔机底座					
固定支脚		1,35	0,65	0,65	390
		0,82	0,65	0,65	325
行走基节		5,01	2,41	2,41	4720
斜撑		4,51	0,29	0,29	420
底架		6,7	0,7	2,31	1600

机构

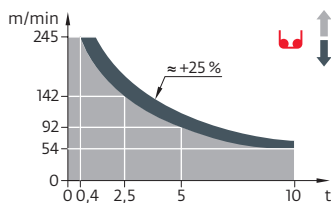
380 V - 50 Hz													ch - PS hp	kW	
	100 LVF 50 Optima	m/min	36	46	63	94	18	23	32	47	100	75	1018 m		
		t	10	7,5	5	2,5	20	15	10	5					
	150 LVF 50 GH Optima	m/min	54	68	92	142	245	28	37	53	88	122	150	110	1200 m
		t	10	7,5	5	2,5	0,4	20	15	10	5	2,1			
	100 VVF 40		1 min 40 s									100	75		
	RVF 172 Optima+	tr/min U/min rpm	0 → 0,8									2 x 10	2 x 7,5		
	VB 22 RT 664 A2B - 2V	m/min	16 - 32									6 x 7	6 x 5,2		

	IEC 60204-32		kVA
	380 V (+10% -10%) 50 Hz		100 LVF : 179 kVA 150 LVF GH : 219 → 159 kVA

### 100 LVF 50 Optima



### 150 LVF 50 GH Optima



- 工作状态下的反力
- 非工作状态下的反力
- ▲ 起重机在无载荷、无配重、独立高度状态下的压重
- ▲ 总配重
- ▭ 无小车吊篮时的负荷曲线
- ▭ 配小车吊篮时的负荷曲线 - 减去0.1t
- ⊗ 起重臂与上支座的铰点
- ⊞ 挡风板位置
- 13, 4m卡车
- ||||| 40"立方集装箱
- 坚固的附着框
- - - 松开的附着框
- 起升
- ▶ 变幅
- 回转
- 行走
- kVA 额定功率
- ⌚ 电源控制功能: 使"起升"速度与可用电源适配
- 👁️ 参阅内爬
- 📞 联系我们



此商业文件不承担法律责任, 对于任何技术信息, 请查阅相应说明书。



马尼托瓦克起重设备(中国)有限公司

工厂地址: 江苏省张家港市经济开发区(南)区金塘路55号  
 市场总部: 上海市漕溪北路333号中金国际广场B座1103-1105室  
 总机: 021-6457 0066  
 传真: 021-6457 4985  
 邮编: 200030