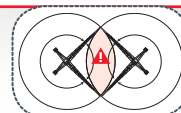
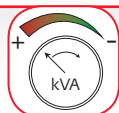
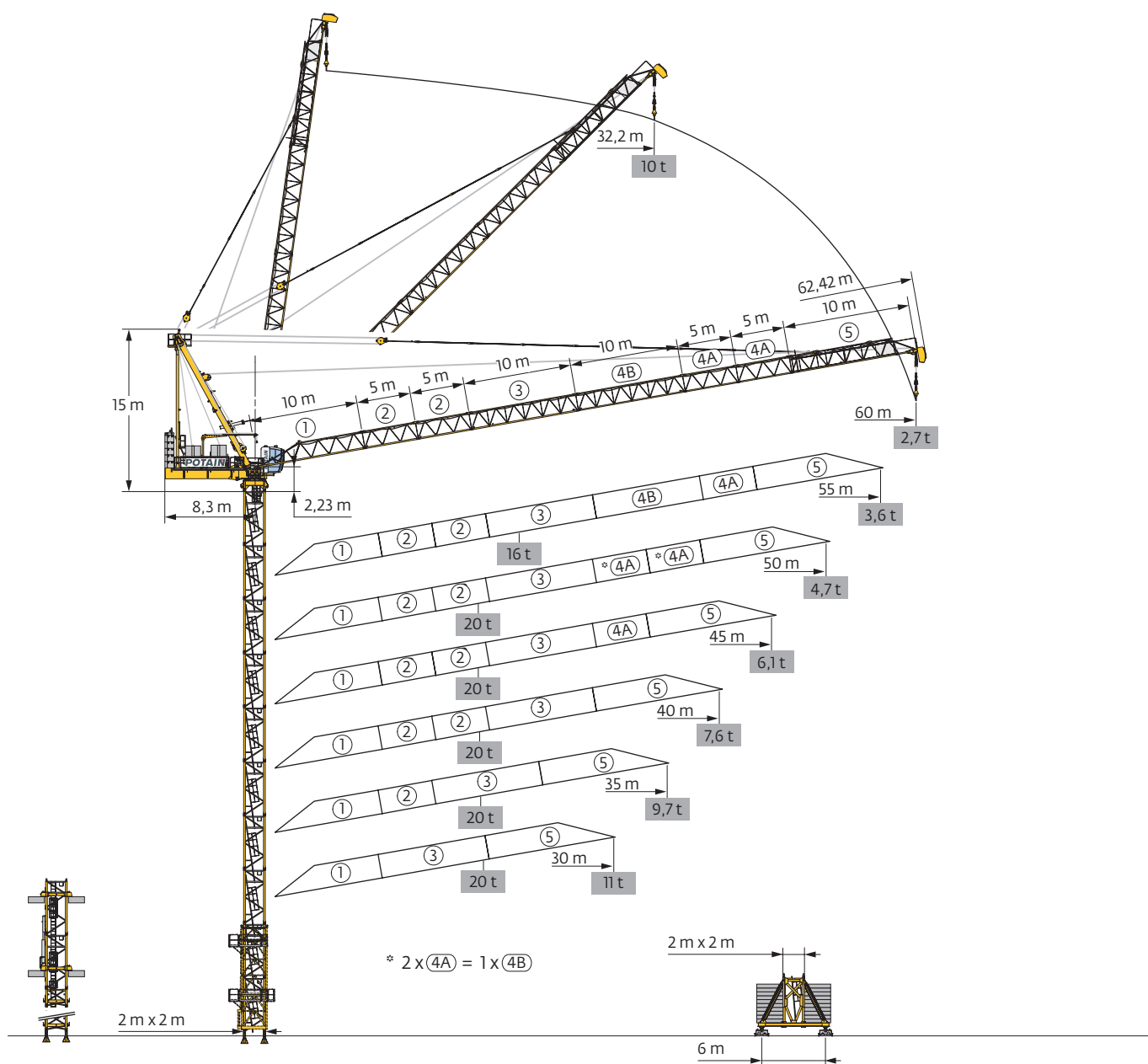
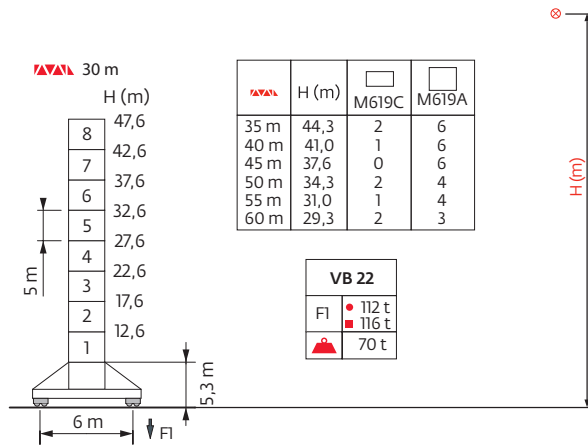
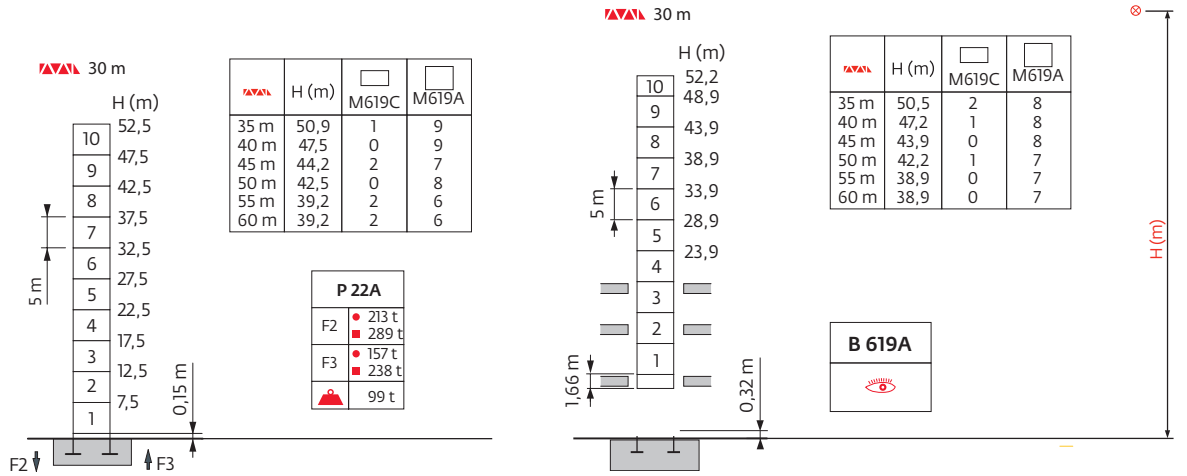


MR 295 P22A

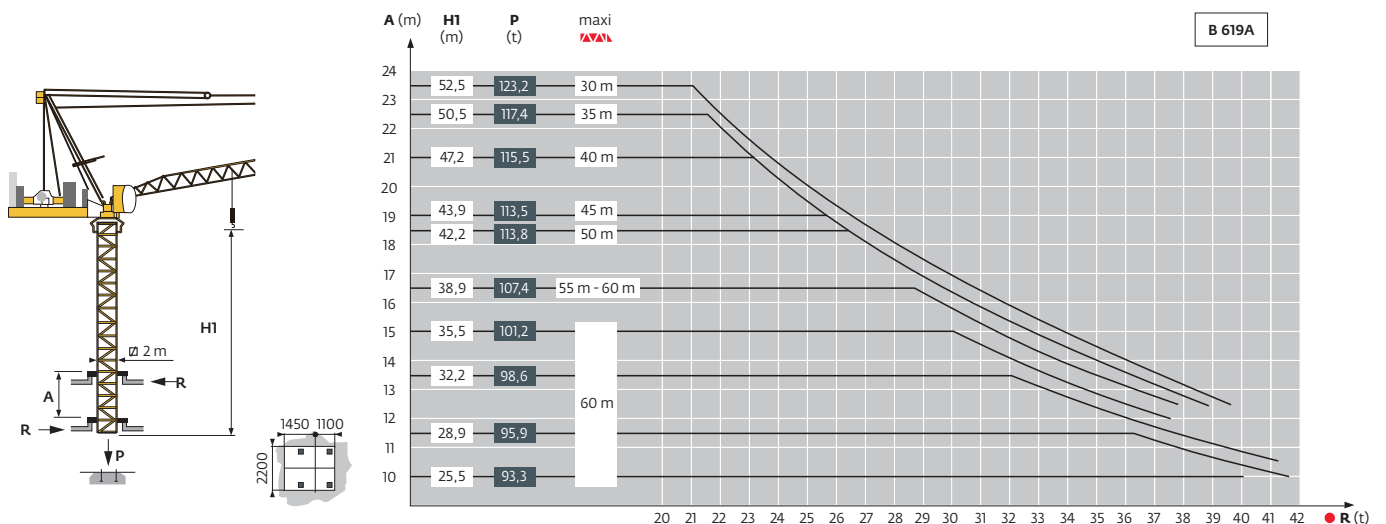


Mât - Réactions / Mast - Reaktionskräfte / Mast - Reactions / Mástil - Reacciones / Torre - Reazioni
 Tramo - Reações / Реакция опор мачты

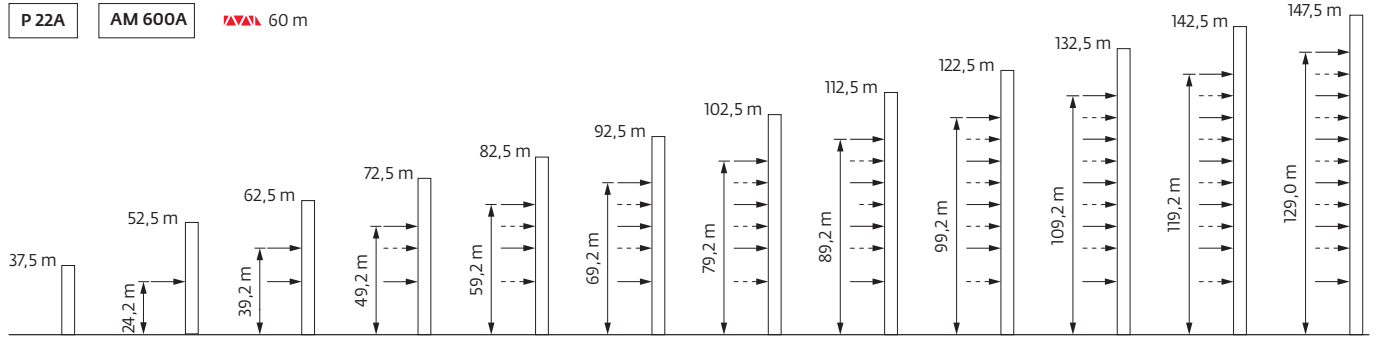
2 m



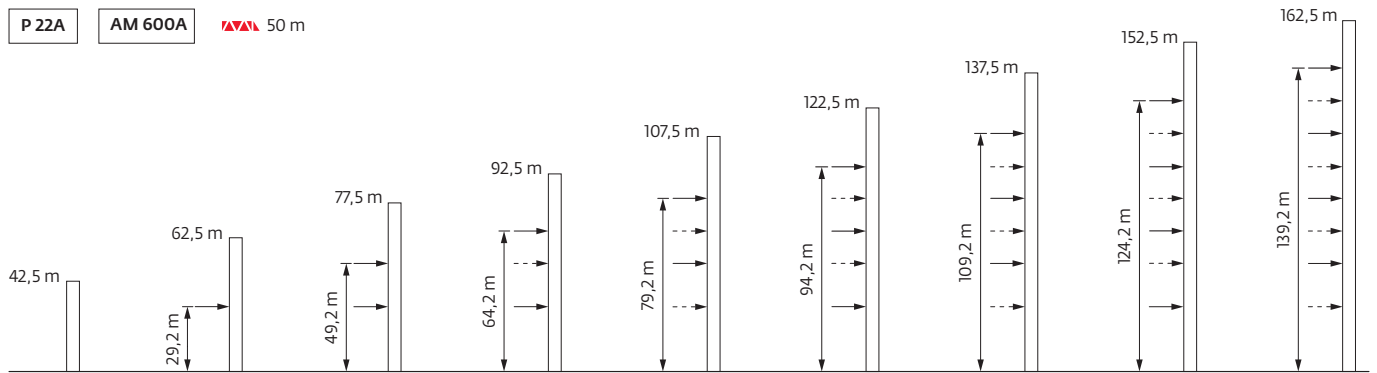
Télescopage sur dalles / Kletterkrane im Gebäude / Climbing Crane / Telescopage grua trepadora / Gru in cavedio
 Telescopagem sobre lages / Кран, ползущий внутри здания



Ancrages / Verankerungen / Anchorages / Anclajes / Ancoraggi
 Ancoragem / Анкера














































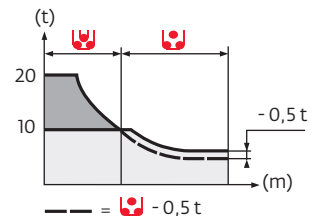
 H > 147,5 m



 H > 162,5 m

Courbes de charges / Lastkurven / Load curves / Curvas de cargas / Curve di carico
 Curvas de carga / Кривые нагрузок

60 m	5	▶	32,2	35	37	40	42	45	47	50	52	55	57	60	m																
			10	8,7	7,9	6,8	6,2	5,4	4,9	4,2	3,8	3,6	3,2	2,7	t																
55 m	4,7	▶	22,2	25	27	27,3	30	32	32,4	35	37	40	42	45	47	50	52	55	55,2	m											
			16	13,3	11,8	-	9,9	8,8	-	8	7,2	6,2	5,6	5	4,8	4,1	3,6	3	3	t											
						12	10,3	9,2	-	7,9	7,1	6,1	5,5	4,8	4,5	3,8	3,4	2,85	2,8	t											
																				10	8,8	8	6,9	6,3	5,5	5	4,5	4,2	3,6	3,6	t
50 m	4,3	▶	18,9	20	22	23,5	25	27	30,7	32	32,6	35	37	40	42	45	47	50	50,3	m											
			20	18,4	16,1	-	13,3	11,8	10	9,3	-	8	7,4	6,7	6,1	5,2	4,7	4	3,9	t											
						15	13,7	12,2	-	9,2	-	7,9	7,1	6,4	5,8	5	4,5	3,8	3,68	t											
																				10	8,9	8,1	7,1	6,4	5,6	5,4	4,7	4,6	t		
45 m	4	▶	18,9	20	22	23,6	25	27	31	32	33,1	35	37	40	42	45	45,5	m													
			20	18,6	16,2	-	13,4	11,9	10	9,5	-	8,7	7,9	6,8	6,1	5,2	5,1	t													
						15	13,8	12,3	9,9	9,4	-	8,4	7,6	6,5	5,9	5	4,86	t													
																		10	9,2	8,3	7,3	6,6	6,1	5,9	t						
40 m	3,6	▶	19,1	20	22	23,9	25	27	30	31,4	33,6	35	37	40	40,7	m															
			20	18,8	16,4	-	13,6	12,1	10,2	10	-	8,8	8	6,8	6,6	t															
						15	14	12,5	10,6	-	-	8,5	7,7	6,6	6,34	t															
																10	9,3	8,5	7,6	7,3	t										
35 m	3,3	▶	19,2	20	22	24,1	25	27	30	31,8	34,3	35	35,9	m																	
			20	19	16,6	-	13,9	12,3	10,9	10	-	8,9	8,5	t																	
						15	14,3	12,8	11,1	-	-	8,6	8,22	t																	
														10	9,7	9,25	t														
30 m	2,9	▶	19,4	20	22	24,1	25	27	30	31	m																				
			20	19,2	16,8	-	14,1	13	11	10,35	t																				
						15	14,2	12,9	11	10,35	t																				
											10	t																			



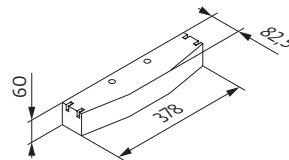
Lest de base / Grundballast / Base ballast / Lastre de base / Zavorra di base
 Lastro da base / Базовый Балласт

			30 m	35 m	40 m	45 m	50 m	55 m	60 m
	VB 22	H (m)	47,6	44,3	41,0	37,6	34,3	31,0	29,3
		(t)	120	132	132	132	132	132	132

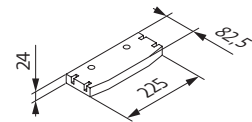
Lest de contre-flèche / Gegenauslegerballast / Counter-jib ballast / Lastre de contra-flecha / Zavorra di controbraccio
 Lastro da contra lança / Противовес стрелы

	100 LVF			150/180 LVF GH		
	3950 kg	1000 kg	(kg)	3950 kg	1000 kg	(kg)
30 m	5	0	19750	4	3	18800
35 m	5	0	19750	4	3	18800
40 m	5	0	19750	4	3	18800
45 m	5	0	19750	4	3	18800
50 m	5	1	20750	5	0	19750
55 m	5	1	20750	5	0	19750
60 m	5	1	20750	5	0	19750

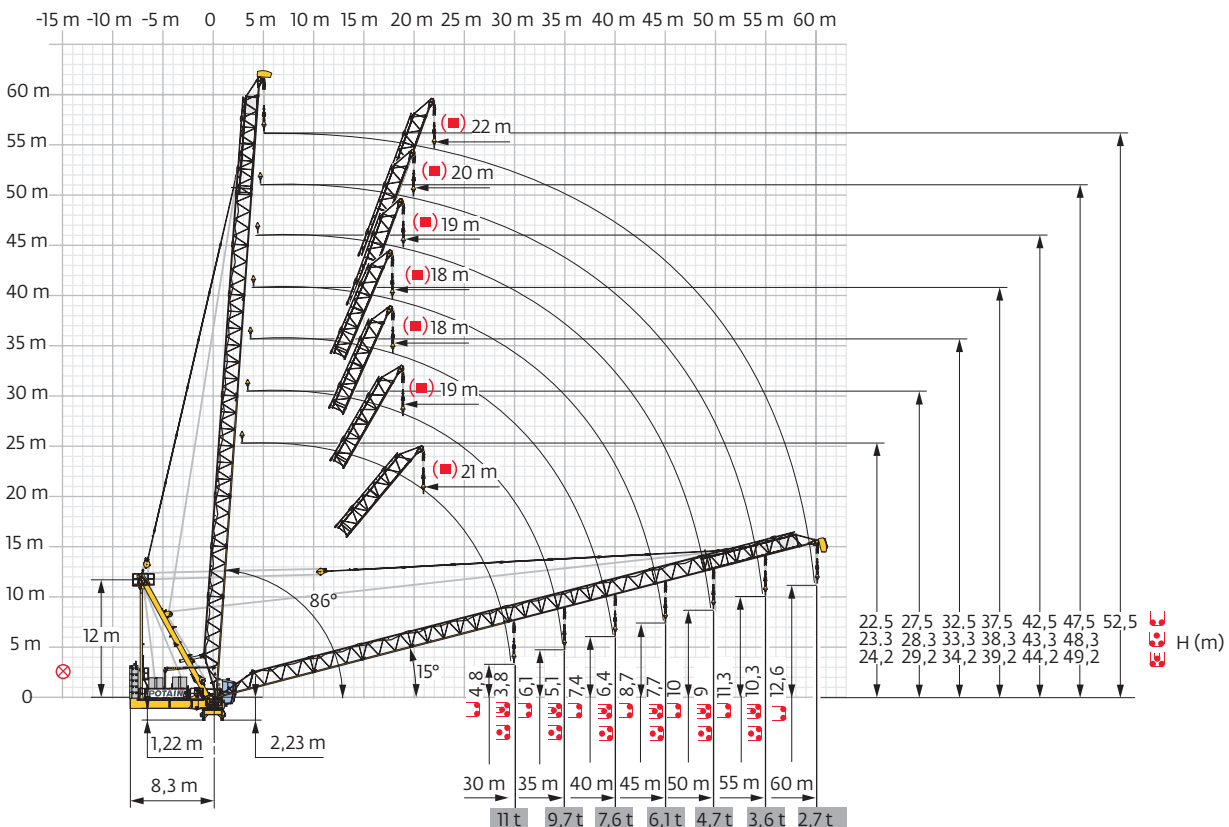
CBJ - 3950 kg



CBK - 1000 kg



Flèche relevée / Ausleger in Steilstellung / Luffing jib / Flecha izada / Braccio impennato
 Lança inclinada / Маховая стрела

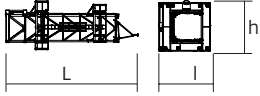
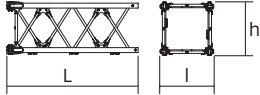
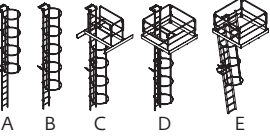
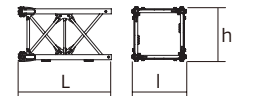
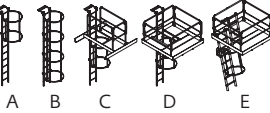
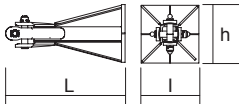
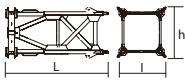
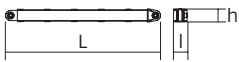
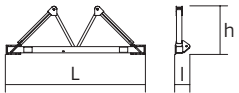


Encombremet et poids / Abmessungen und Gewicht / Dimensions and weight / Dimensiones y peso / Ingombro e peso
dimensões e pesos / габаритные размеры и вес

Partie tournante / Drehender Kranteil / Slewing crane part / Parte giratoria
Parte rotante / Parte rotativa / Поворотная часть :  45 m -  33 LVF



Partie tournante / Drehender Kranteil / Slewing crane part Parte giratoria / Parte rotante / Поворотная часть		L (m)	I (m)	h (m)	kg (+/- 5%)
Contre-flèche / Gegenausleger Counter-jib / Contra-flecha Controbraccio / Contra-lança Контр-стрела		7,43	5,15	4,7	7000
Poinçon / Auslegerhaltebock Strut / Puntal Puntone / Extrator стойка		7,6	3,3	13	7015
Cabine / Kabine Cab / Cabina Cabina / Cabina Кабина	Ultra View	4,74	1,86	2,53	1840
Pivot / Krankopf Towerhead / Pivote Portaralla / Pivot Секция поворотной части	∇ 2 m	2,98	2,28	3,14	9150
Elément de flèche / Auslegerement Jib section / Elemento de flecha Elemento di braccio / Elemento de lança Секция стрелы	①	10,27	1,9	1,99	1470
Elément de flèche / Auslegerement Jib section / Elemento de flecha Elemento di braccio / Elemento de lança Секция стрелы	③ ④A	10,17 10,17	1,81 1,81	1,67 1,65	1230 1015
Elément de flèche / Auslegerement Jib section / Elemento de flecha Elemento di braccio / Elemento de lança Секция стрелы	② ④B	5,17 5,17	1,81 1,81	1,67 1,65	650 530
Elément de flèche / Auslegerement Jib section / Elemento de flecha Elemento di braccio / Elemento de lança Секция стрелы	⑤	11,79	1,83	1,97	1360
Moufle / Hubflasche Pulley block / Aparejo Bozzello / Cadernal Полиспа́ст		1,8 0,62	0,44 0,18	2,67 1,15	493 407
Treuil de levage (+ câble) / Hubwerk (+ Seil) Hoisting winch (+ rope) / Mecanismo de elevación (+ cabo) Argano di sollevamento (+ fune) Guincho de elevação (+ cabo) Подъёмная лебёдка (+ канатом)	100 LVF 150/180 LVF GH	3,18 4,27	1,6 2	1,88 2,34	4455 9230
Treuil de relevage (+ câble) / Auslegerverstellwerk (+ Seil) Luffing winch (+ rope) / Mecanismo de izado (+ cabo) Argano di Impennaggio braccio (+ fune) Mecanismo de Inclinação da Lança (+ cabo) лебёдка подъёма стрелы (+ канатом)	100 VVF	3,16	1,77	1,88	3000

Рулоне / Kranturm / Crane tower Mástil / Torre / Torre Башня крана		L (m)	I (m)	h (m)	kg (+/- 5%)	
Cage de télescopage / Teleskopwagen Telescopic cage / Jaula de telescopaje Gabbia di telescopaggio / Gaiola de telescopagem для телескопирования крана		2 m	11,5	4,21	4,36	8235
M619 A		2 m	5,32	2,13	2,13	3517
		A	-	-	-	47
		B	-	-	-	55
		C	-	-	-	122
		D	-	-	-	165
		E	-	-	-	148
M619 C		2 m	3,66	2,13	2,13	2492
		A	-	-	-	29
		B	-	-	-	41
		C	-	-	-	98
		D	-	-	-	140
		E	-	-	-	138
Pieds de scellement / Verankerungsfüße Fixing angles / Pie de empotramiento Montante da annegare / Angulos fixadores анкера		P22A	1,35	0,65	0,65	390
		R22A	0,82	0,65	0,65	325
Mât-châssis / Grundmasteinheit Basic mast unit / Tramo-chasis Elemento base / Tramo-chassis Мачта для крепления к шасси		VB 22	5,01	2,41	2,41	4720
Haubans / Mastabstützungen Struts / Tornapuntas Puntoni / Escoras Растяжка		VB 22	4,51	0,29	0,29	420
Sommier / Unterwagenhälfte Half-bearer / Testero Testata / Estrutura base Траверса		VB 22	6,7	0,7	2,31	1600

Mécanismes / Triebwerke / Mechanisms / Mecanismos / Meccanismi
 Mecanismos / Механизмы

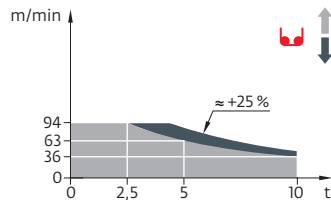
400 V - 50 Hz											ch - PS hp	kW		
	100 LVF 50 Optima	m/min t	36 10	46 7,5	63 5	94 2,5	18 20	23 15	32 10	47 5	100	75	1018 m	
	150 LVF 50 GH Optima	m/min t	54 10	68 7,5	92 5	142 2,5	245 0,4	28 20	37 15	53 10	88 5	122 2,1	150	110
	100 VVF 40		1 min 40 s								100	75		
	RVF 172 Optima+	tr/min U/min rpm	0 → 0,8								2 x 10	2 x 7,5		
	VB 22	m/min												

400 V (+10% -10%) 50 Hz	100 LVF : 179 kVA 150 LVF GH : 219 → 159 kVA

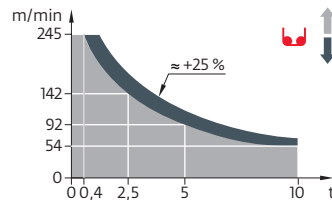
480 V - 60 Hz											ch - PS hp	kW		
	100 LVF 50 Optima	m/min t	36 10	46 7,5	63 5	94 2,5	18 20	23 15	32 10	47 5	100	75	1018 m	
	180 LVF 50 GH Optima	m/min t	64 10	81 7,5	110 5	171 2,5	245 0,8	34 20	44 15	64 10	105 5	122 3,2	180	132
	100 VVF 40		1 min 40 s								100	75		
	RVF 172 Optima+	tr/min U/min rpm	0 → 0,8								2 x 10	2 x 7,5		
	VB 22	m/min												

480 V (+6% -10%) 60 Hz	100 LVF : 179 kVA 180 LVF GH : 243 → 171 kVA

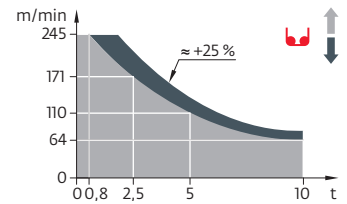
100 LVF 50 Optima



150 LVF 50 GH Optima



180 LVF 50 GH Optima



	FR	DE	EN	ES	IT	PT	RU
●	Réactions en service	Reaktionskräfte in Betrieb	Reactions in service	Reacciones en servicio	Reazioni in servizio	Reacções em serviço	Реакция при работе
■	Réactions hors service	Reaktionskräfte außer Betrieb	Reactions out of service	Reacciones fuera de servicio	Reazioni fuori servizio	Reacções fora de serviço	Реакция в покое
▲	Poids à vide sans lest avec flèche et hauteur maximum	Gewicht ohne Last, ohne Ballast, mit Ausleger und max. Höhe	Weight without load, without ballast, with jib and max. height	Peso en vacío sin lastre, con flecha y altura máxima	Peso a vuoto, senza zavorra, con braccio e altezza massimi.	Peso em vazio sem lastro com lança e altura máxima.	Вес пустого, без балласта, со стрелой, максимальной высоты.
▲	Poids total du lest	Ballast-Gesamtgewicht	Total ballast weight	Peso total del lastre	Peso totale della zavorra	Peso total do lastro	Общий вес балласта
▢	Courbes de charges sans plate-forme d'intervention	Lastkurven ohne Arbeitsbühne	Load curves without inspection platform	Curvas de cargas sin plataforma de servicio	Curve di carico senza piattaforma di intervento	Curvas de carga sem plataforma de intervenção	Кривые грузоподъемности без технической платформой
▢	Courbes de charges avec plate-forme d'intervention déduire 0,1 t	Lastkurven mit Arbeitsbühne 0,1 t abziehen	Load curves with inspection platform, deduct 0,1 t	Curvas de cargas con plataforma de servicio descontar 0,1 t	Curve di carico con piattaforma di intervento detrarre 0,1 t	Curvas de carga com plataforma de intervenção deduzir 0,1 ton	Кривые грузоподъемности с технической платформой - вычесть 0,1 т
⊗	Axe articulation flèche	Auslegergelenk-achse	Jib articulation axis	Eje de articulación de la flecha	Perno di articolazione del braccio	Eixo de articulação da lança	Ось шарнира стрелы
⊗	Position girouette	Windfreistellung	Weathervanning position	Posición veleta	Libera rotazione	Posição em cata-vento	Флюгер
→	Camion 13,4 m	Lkw 13,4 m	Lorry 13,4 m	Camión 13,4 m	Camion 13,4 m	Camião 13,4 m	Рзуповой автомобиль 13,4 м
▤	Conteneur High Cube 40', et/ou Flat Rack 20'	Container High Cube 40', and/or Flat Rack 20'	Container High Cube 40', and/or Flat Rack 20'	Contenedor High Cube 40', y/o Flat Rack 20'	Container High Cube 40', e/o Flat Rack 20'	Contentor High Cube 40', e/ou Flat Rack 20'	40-футовый контейнер повышенной вместимости High Cube, и/или 20-футовая открытая платформа Flat Rack
→	Cadre d'ancrage serré	Fester Verankerungsrahmen	Tightened anchorage frame	Marco de anclaje de apriete	Quadro di ancoraggio stretto	Quadro de amarração apertado	Прикрепленная анкерная рама
→	Cadre d'ancrage desserré	Loser Verankerungsrahmen	Loosened anchorage frame	Marco de anclaje de desapriete	Quadro di ancoraggio allentato	Quadro de amarração solto	Отсоединенная анкерная рама
↑	Levage	Heben	Hoisting	Elevación	Sollevarmento	Elevação	Подъем
↑	Relevage	AL-Verstellen	Luffing	Isado	Brandeggio	Levantamento	Маховый подъем
↻	Orientation	Schwenken	Slewing	Orientación	Rotazione	Rotação	Поворот
→	Translation	Kranfahren	Travelling	Traslación	Traslazione	Translação	Перемещение крана
kVA	Puissance nominale	Nennleistung	Rated power	Potencia nominal	Potenza nominale	Potência nominal	Номинальная мощность
⊗	Fonction Power Control : vitesses levage «montée» adaptées à la puissance disponible	Funktion Power Control : An die verfügbare Leistung angepasste Hubgeschwindigkeiten „Heben“	Power Control function: „Hoisting“ speeds adapted to the available power	Función Power control (control de la potencia): velocidades de elevación «arriba» adaptada a la energía disponible	Funzione Power Control : velocità del sollevamento « salita » adattate alla potenza elettrica disponibile	Função Power control (controlo de potência): velocidades de elevação «subir» adaptada a energia disponível	Функция Power control: изменение скорости подъема в зависимости от мощности источника питания
👁	Voir télescope sur dalles	Siehe Kletterkrane im Gebäude	See climbing crane	Veja grua trepadora	Consultare gru in cavedio	Ver telescopagem sobre lages	См. кран, ползущий внутри здания
i	Nous consulter	Auf Anfrage	Consult us	Consultarnos	Consultateci	Consultar-nos	Проконсультируйтесь у нас
⚠	Document commercial non contractuel. Pour toute information technique se référer à la notice correspondante.	Unverbindliches Vertriebsdokument. Für technische Informationen, siehe die entsprechenden Anweisungen.	This commercial document is not legally binding. For any technical information, please refer to the corresponding instructions.	Documento comercial no contractual. Para cualquier información técnica, ver la noticia correspondiente.	Documento commerciale non vincolante, per tutte le informazioni tecniche fare riferimento al catalogo istruzioni.	Documento comercial não contractual. Para qualquer informação técnica complementar consultar as respectivas instruções.	Этот коммерческий документ не является юридически обязательным. Для получения технической информации, см. соответствующие инструкции.



Americas
Manitowoc, Wisconsin, USA
 Tel: +1 920 684 6621
 Fax: +1 920 683 6277

Shady Grove, Pennsylvania, USA
 Tel: +1 717 597 8121
 Fax: +1 717 597 4062

Europe, Middle East, Africa
Dardilly, France
 Tel: +33 (0)4 72 18 20 20
 Fax: +33 (0)4 72 18 20 00

China
Shanghai, China
 Tel: +86 21 6457 0066
 Fax: +86 21 6457 4955

Greater Asia-Pacific
Singapore
 Tel: +65 6264 1188
 Fax: +65 6862 4040

www.manitowoccranes.com

©2016 All Rights Reserved – Manitowoc Cranes, LLC and its affiliates.