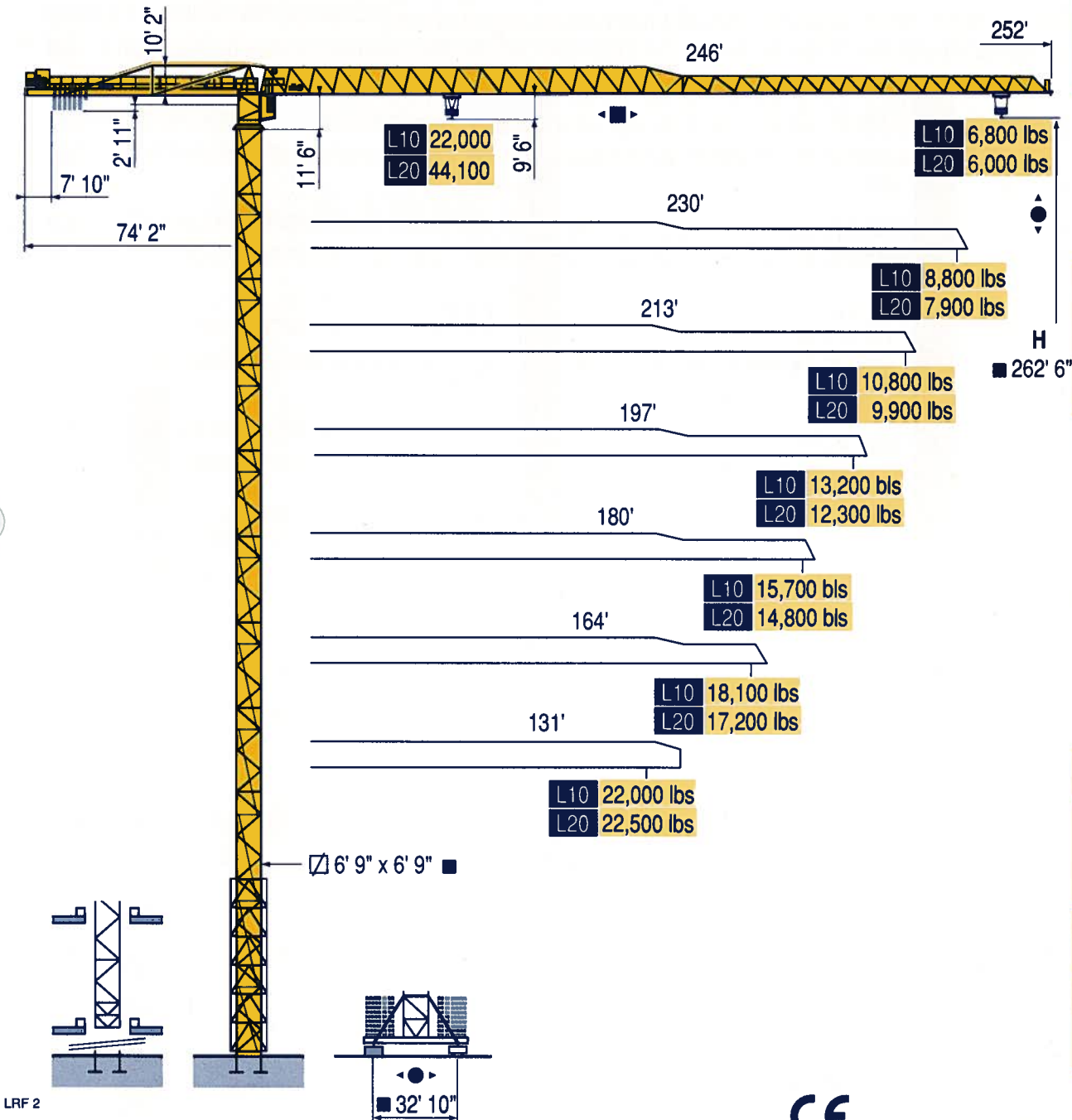


Topless MDT 412 L10-L20



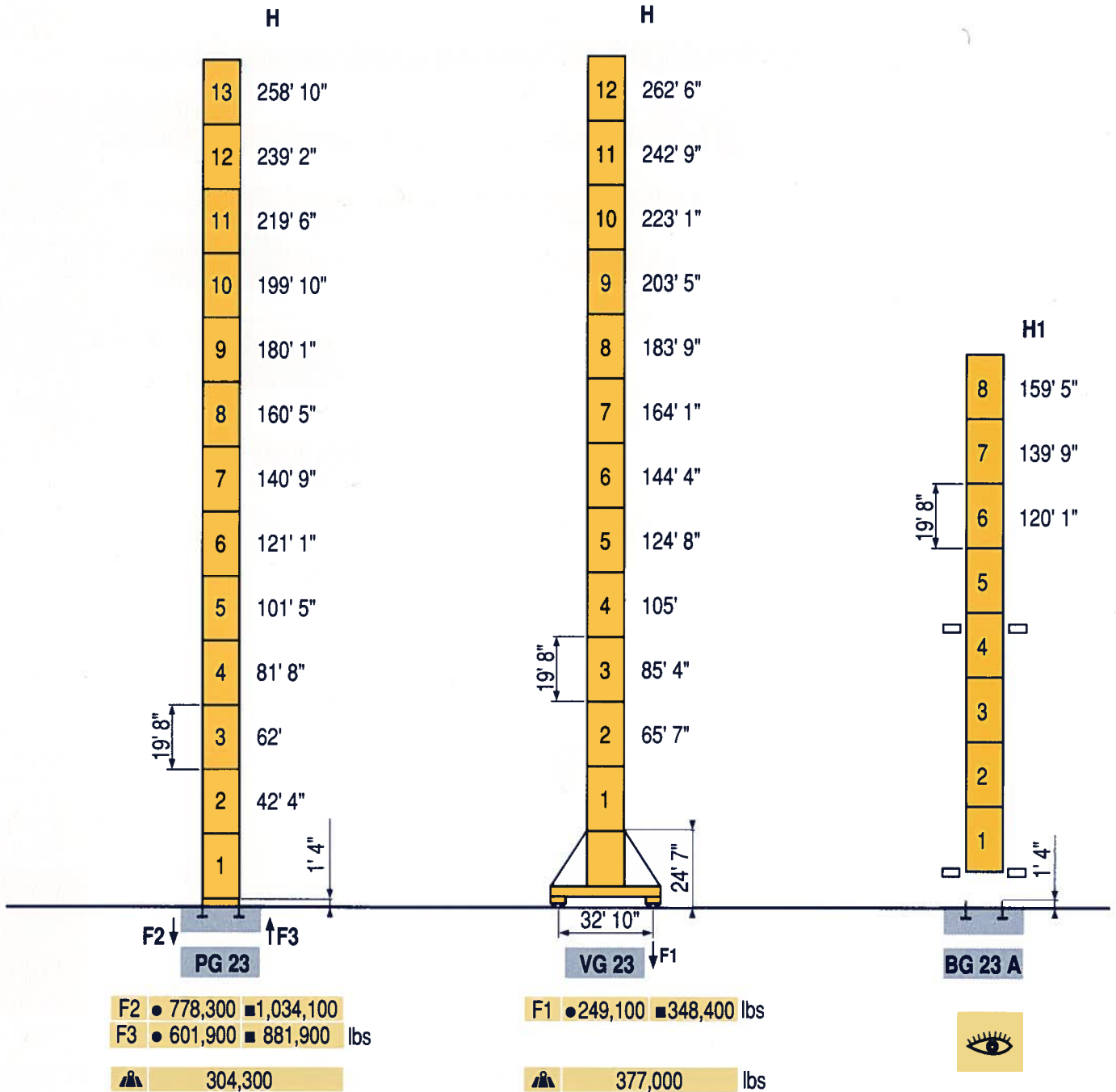
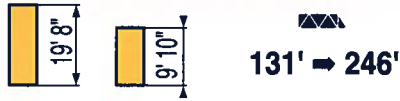
- HD
- HDT
- GTMR
- CITY CRANE
- TOPKIT MD
MAXI MD
- MAXI TOPKIT
- Topless MDT
- MR

CE FEM 1.001-A3



Masts / Reactions

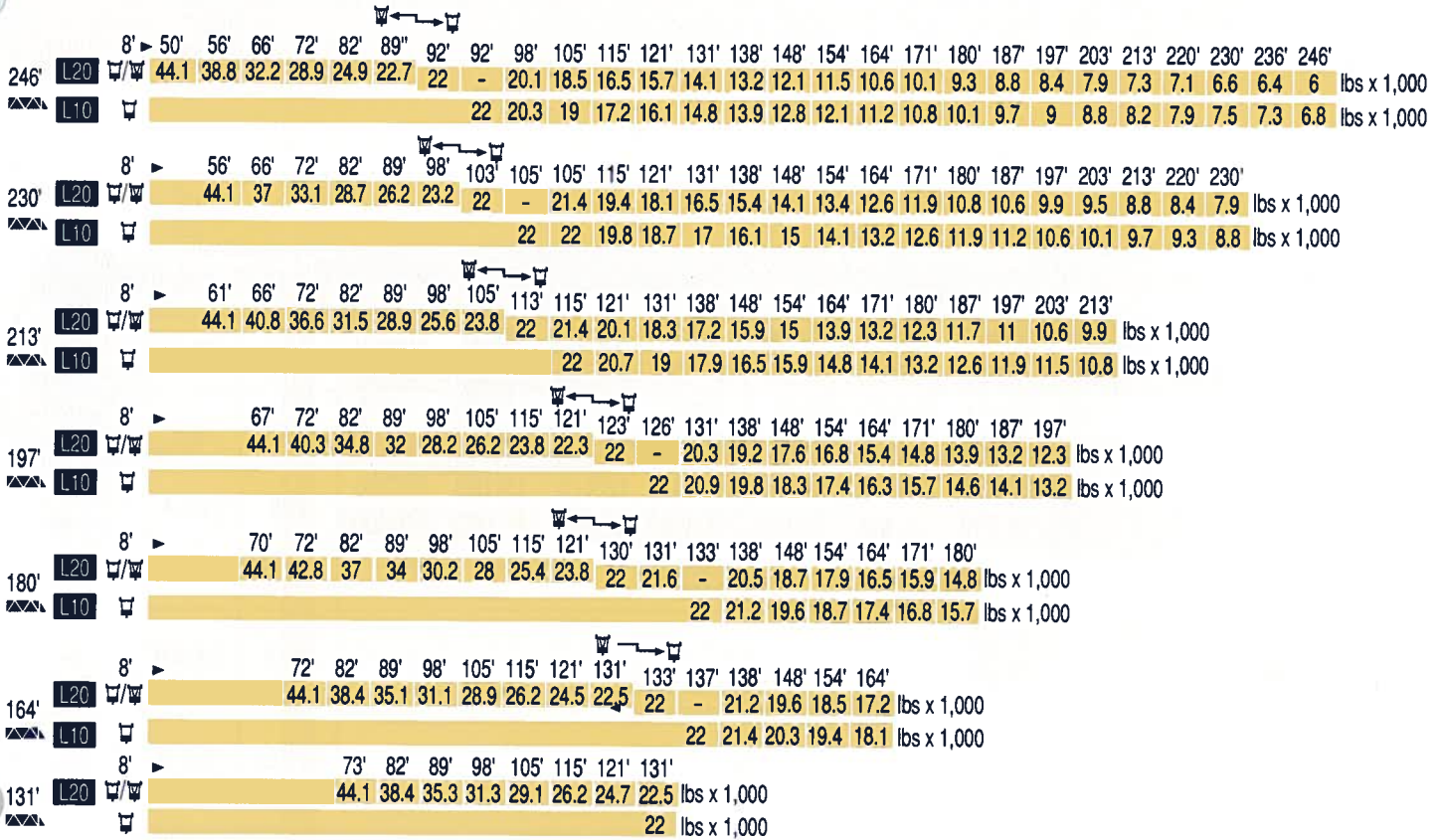
□ 6' 9"
MDT 412 L10-L20



LRF 2

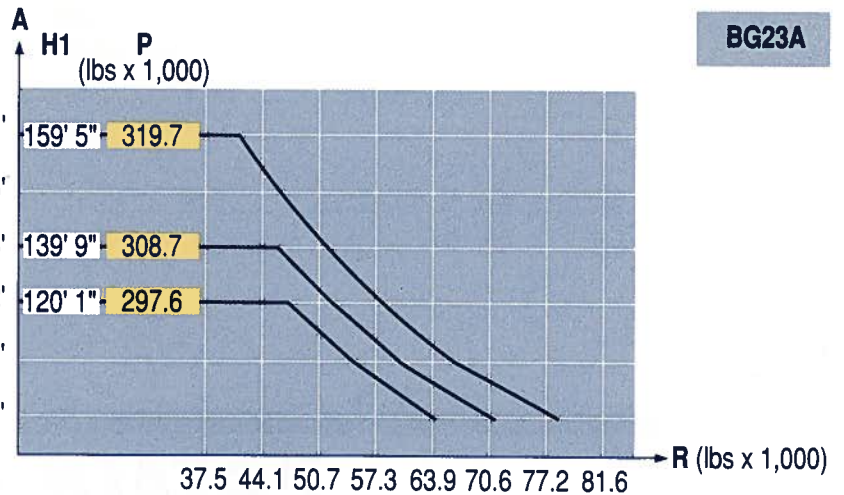
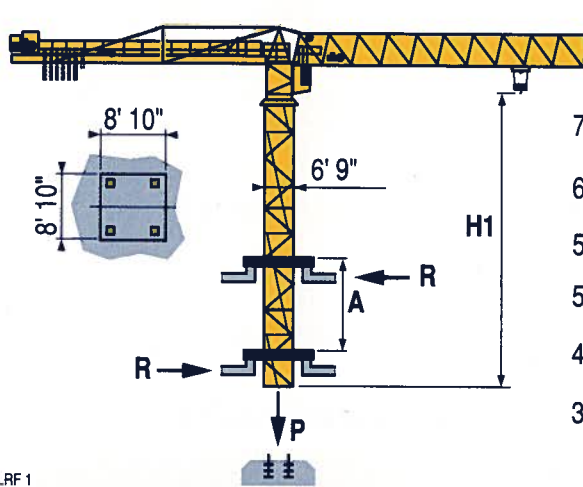
- See climbing crane
- Reactions in service
- Reactions out of service
- Without load, ballast (or transport axles), with maximum jib and maximum height.

Load diagrams



LRF1










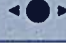
Climbing crane



LRF1

- A** Distance between collars
- H1** Crane height
- P** Crane weight (in service)
- R** Horizontal reaction

Mechanisms

										ch - PS hp	kW		
	66 S 5,0 310	fpm	13/126	20/197	31/315	51/500	6/63	10/98	16/157	25/250	108	79.2	1,017' >1,017' 
		lbs	22,000	14,300	8,600	4,900	44,100	28,700	17,200	9,700			
	66 S 5,0 685	fpm	11/106	17/164	26/262	42/417	5/53	8/82	13/130	21/209	108	79.2	2,247' >2,247' 
		lbs	22,000	14,300	8,600	4,900	44,100	28,700	17,200	9,700			
	102 S 5,0 310	fpm	15/150	24/236	38/378	59/591	8/79	12/118	19/189	30/290	168	122.4	1,017' >1,017' 
		lbs	22,000	18,300	10,800	6,400	44,100	36,600	21,600	13,300			
	DV-7,5	fpm	0 → 280							12.4	9		
	OR-16,5	rpm	1							3 x 9	3 x 6.6		
VG23 		fpm	98							2 x 12.4	2 x 9		

CEI 38 	IEC 38	kVA
480 V (+6% -10%) 60 Hz		66 S : 132 kVA 102 S : 192 kVA

LRF 2

-  Hoisting
-  Trolleying
-  Slewing
-  Travelling
-  Consult us



Potain Corporation
1920 East Hallandale Beach Blvd., Suite 911
Hallandale, FL 33009

(954) 454-8727 - Office
(954) 454-6961 - Fax

Email: sales@potaincorp.com

Topless MDT 412 L10-20

Copyright.Reproduction interdite © POTAIN 1999

MDT 412 2001 PC

Subject to modification

Printed in U.S.A.