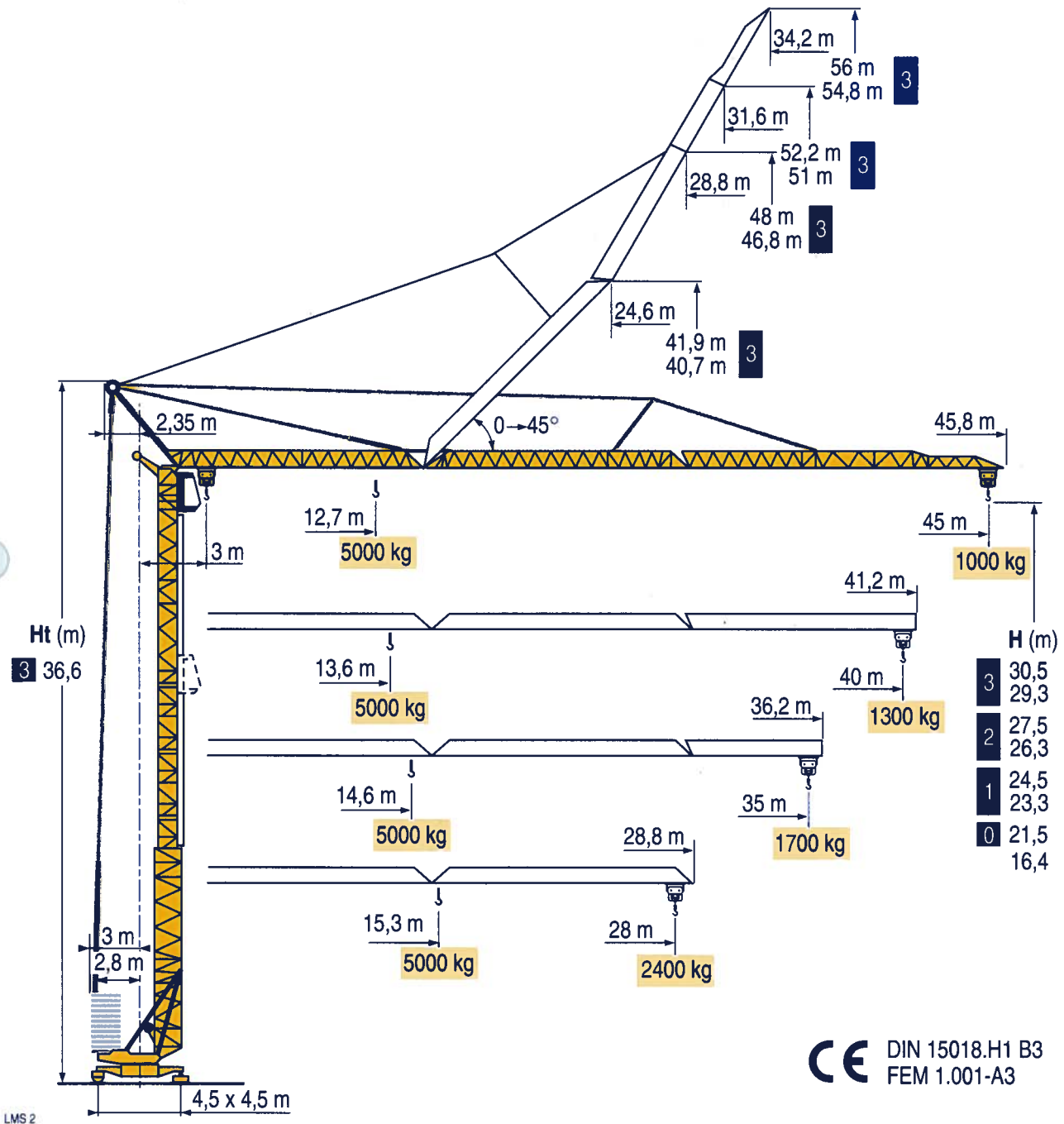


# GTMR 346 A



CE DIN 15018.H1 B3  
FEM 1.001-A3

- HD HDM
- HDT
- GTMR**
- CITY CRANE
- TOPKIT MD MAXI MD
- MAXI TOPKIT
- Topless MDT
- MR



Courbes de charges  
Lastkurven



Load diagrams  
Curvas de cargas



Curve di carico  
负荷曲线



45 m	3 ▶	12,7	15	17	19	20	23	25	27	30	33	35	37	40	43	45	m
▲▲▲		5000	4070	3480	3040	2850	2390	2160	1960	1710	1520	1400	1300	1180	1070	1000	kg

40 m	3 ▶	13,6	15	17	19	20	23	25	27	30	33	35	37	40	m
▲▲▲		5000	4440	3800	3320	3110	2620	2360	2150	1880	1670	1550	1440	1300	kg

35 m	3 ▶	14,6	15	17	19	20	23	25	27	30	33	35	m
▲▲▲		5000	4830	4140	3610	3390	2860	2580	2350	2060	1830	1700	kg

28 m	3 ▶	15,3	17	19	20	23	25	27	28	m
▲▲▲		5000	4400	3850	3610	3050	2760	2510	2400	kg

LMS 1

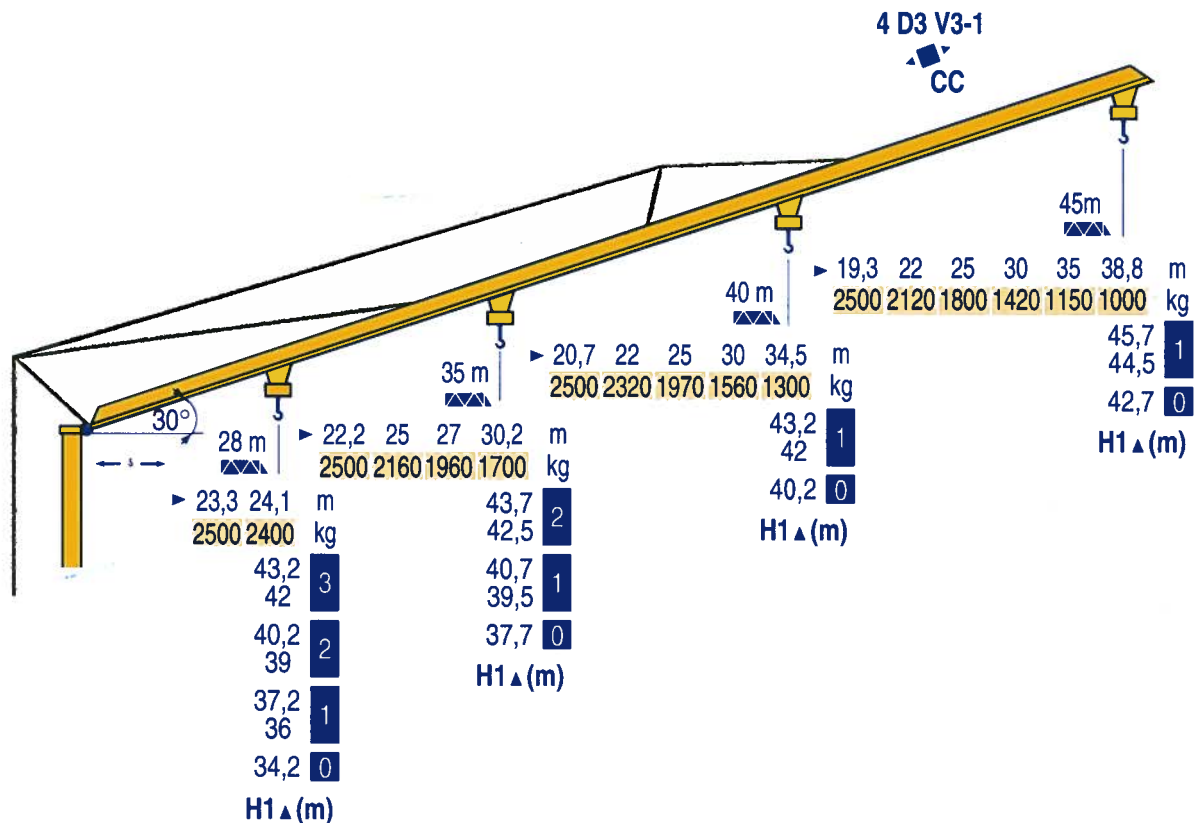
Flèche relevée  
Ausleger in Steilstellung



Luffing jib  
Flecha izada



Braccio impennato  
起升吊臂



LMS 2



Chariot distributeur  
et courbes de charges



Traversing trolley  
and load diagrams



Carrellino distributore  
e curve di carico



Verfahrbare laufkatze  
und lastkurven



Carro distribuidor  
y curvas de cargas



变副滑车和  
负荷曲线



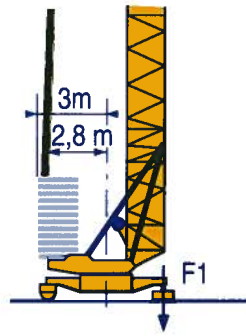
Réactions  
Eckdrücke



Reactions  
Reacciones



Reazioni  
反力



F1 • 32 t ■ 24,5 t

19,2 t

LMS 1

- Réactions en service
- Réactions hors service
- A vide sans lest (ni train de transport) avec flèche et hauteur maximum.



Reactions in service  
Reactions out of service  
Without load, ballast (or transport axles), with maximum jib and maximum height.



Reazioni in servizio  
Reazioni fuori servizio  
A vuoto, senza zavorra (ne assali di trasporto) con braccio massimo e altezza massima.



- Reaktionskräfte in Betrieb
- Reaktionskräfte außer Betrieb
- Ohne Last, Ballast (und Transportachse), mit Maximalausleger und Maximalhöhe.



Reacciones en servicio  
Reacciones fuera de servicio  
Sin carga, sin lastre, (ni tren de transporte), flecha y altura máxima.



工作状态下的反应  
非工作状态下的反应  
空载无压重也无运输车  
有吊臂和最大高度



Mécanismes  
Antriebe



Mechanisms  
Mecanismos



Meccanismi  
机构



									ch - PS hp	kW
	20 TDPC 12	m/min	9	27,5	55	4,5	13,7	27,5	20	15
		Kg	2500	2500	1500	5000	5000	3000		
	20 LVF 12	m/min	5,5	27,5	55	2,7	13,7	27,5	20	15
		Kg	2500	2500	1500	5000	5000	3000		
	4 D3 V3-1	m/min	15 - 30 - 58						4	3
	RCV 51	tr/min U/min rpm	0 → 0,8						6	4,4
	TDV 324 R ≥ 8 m	m/min	25						2 x 4	2 x 3
		m/min	25						2 x 4	2 x 3
CEI 38		IEC 38		KVA						
400 V (+6% -10%) 50 Hz		30 kVA			84/534 - 87/405					

LMS 1

- Levage
- Distribution
- Orientation
- Translation
- Conforme aux directives CEE 84/534 et 87/405 sur le niveau acoustique



Hoisting  
Trolleying  
Slewing  
Travelling  
In compliance with the EEC 84/534 and 87/405 Instructions on noise level



Sollevamento  
Distribuzione  
Rotazione  
Traslazione  
Conforme alle direttive CEE 84/534 e 87/405 sul livello acustico



- Heben
- Katzfahren
- Schwenken
- Kranfahren
- Gemäss EWG-Richtlinien 84/534 und 87/405 für den Schall-Leistungspegel



Elevación  
Distribución  
Orientación  
Traslación  
Conforme con las directivas CEE 84/534 y 87/405 sobre el nivel acustico



起升  
变幅  
回转  
行走  
符合 CEE 84/534 - CEE 87/405 声响度规定



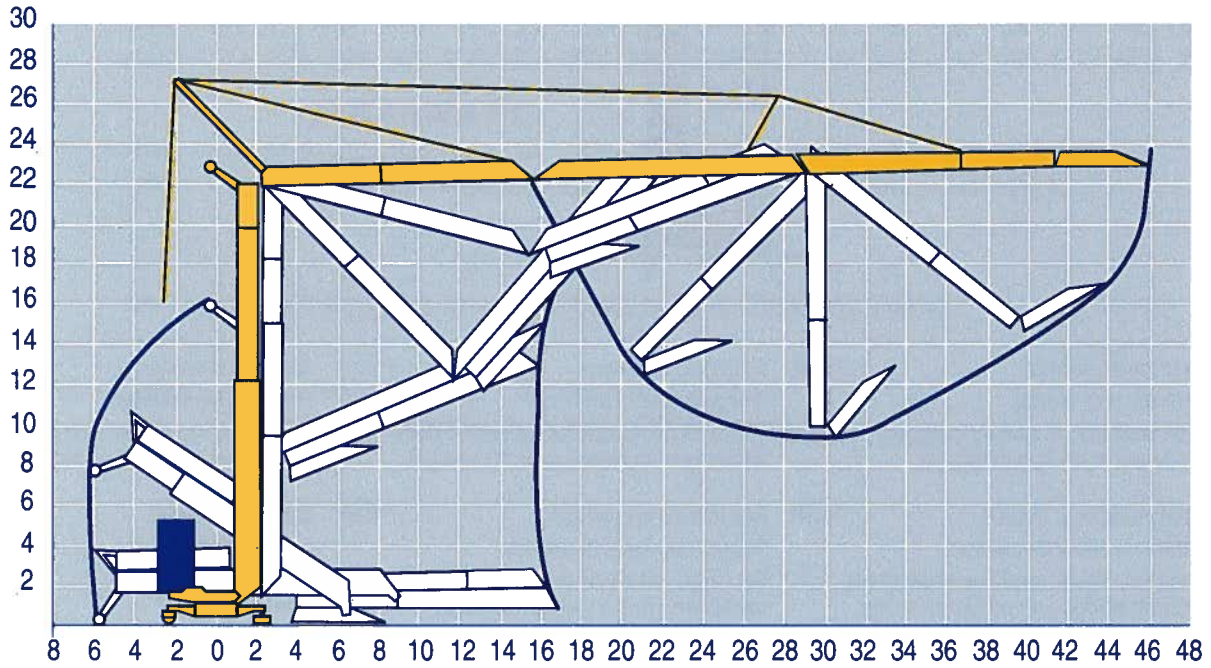
Montage  
Montage



Erection  
Montage



Montaggio  
安装



LMS 1

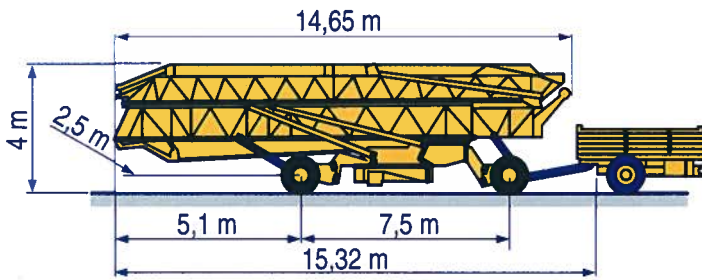
Transport  
Transport



Transport  
Transporte



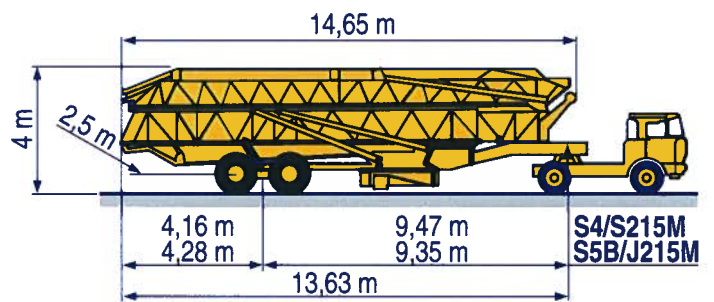
Trasporto  
运输



15A/25A

DJ126M/S215M

CJ125M/J215M



S4/S215M  
S5B/J215M

S4/S215M

S5B/J215M

LMS 1

**POTAIN**   
 GROUPE LEGRIS INDUSTRIES

18.Rue de Charbonnières, B.P. 173  
 F-69132 ECULLY Cedex  
 Tél. (33)04.72.18.20.20  
 Fax (33)04.72.18.20.00  
 http://www.potain.com  
 E-mail : mkt@potain.fr

**GTMR 346 A**

Copyright.Reproduction interdite © POTAIN 1997

**Deutschland**  
 POTAIN GmbH  
**Italia**  
 POTAIN S.p.A.  
**Singapore**  
 POTAIN PTE LTD

Tel : 06.105.704.0  
 Tel : 0.331.49.33.11  
 Tel : (00.65) 227.1550

Réf. 1997.44 LMS 5

修改或我方

Modifiche inserivate

Modificaciones reservadas

ificaton

Subject

Änderungen vorbehalten

Modifications réservées

Printed in France

Réalisation HeadLines