

GMK6250

GMK6220

GROVE®

250 US (220 Metric) Ton Capacity



Dimensions

GMK6250



- 53 ft 11 in (16.42 m) overall length
- 49 ft 7 in (15.1 m) bumper to bumper
- 13 ft 1 in (4 m) Height [+7 in (170 mm) / -5 in (130 mm)]
- 34 ft 8 in (10.6 m) wheelbase

GMK6220 / 6250 Superstructure
Common with GMK5200 / 5240



Boom MEGAFORM™ TWINLOCK™

GMK6250

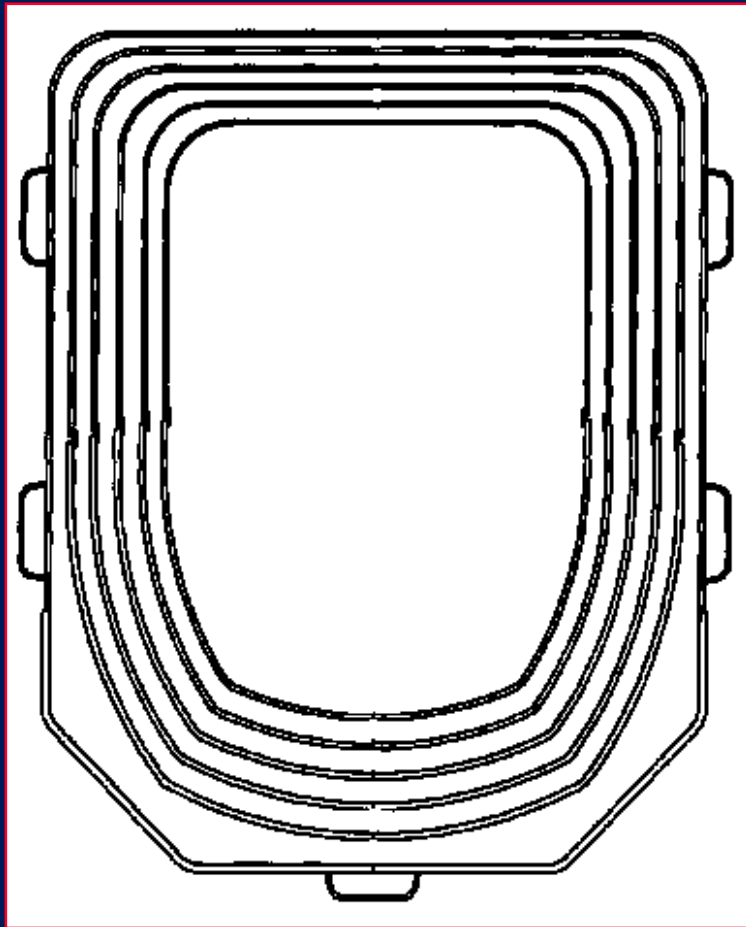


- 44-197 ft (13.5m-60m)
- 6-Section full-power
- Quick-reeve boom nose
- 197 ft (60m) Maximum hook height
- 175 ft (54m) Maximum working radius

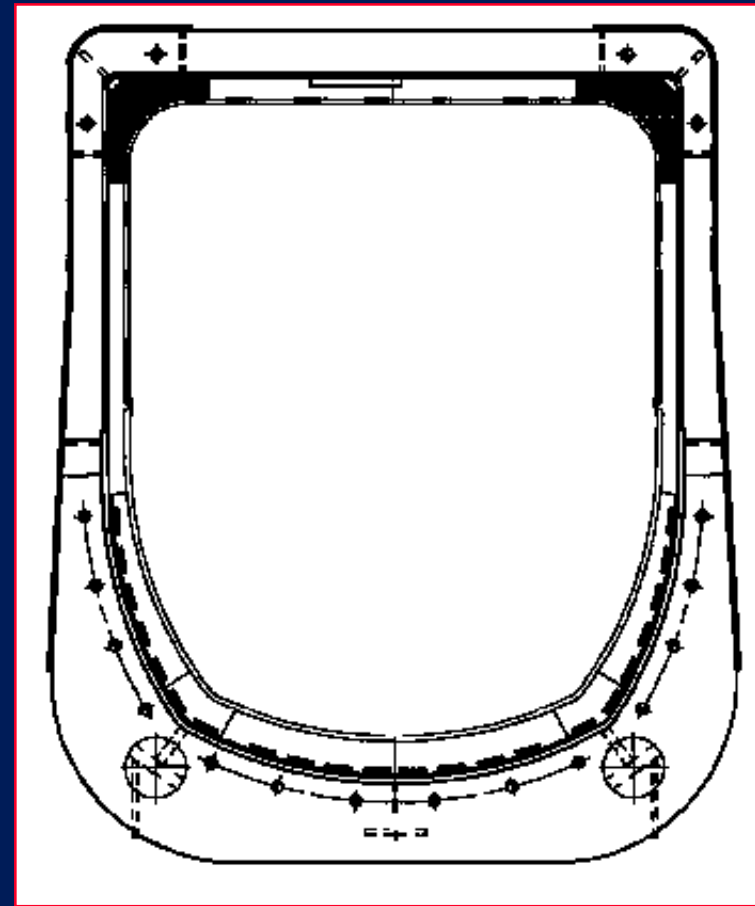


Boom MEGAFORM™

GMK6250



Boom shape



Wear pad positions

Boom Benefits

GMK6250

TWINLOCK™ Boom Telescoping System

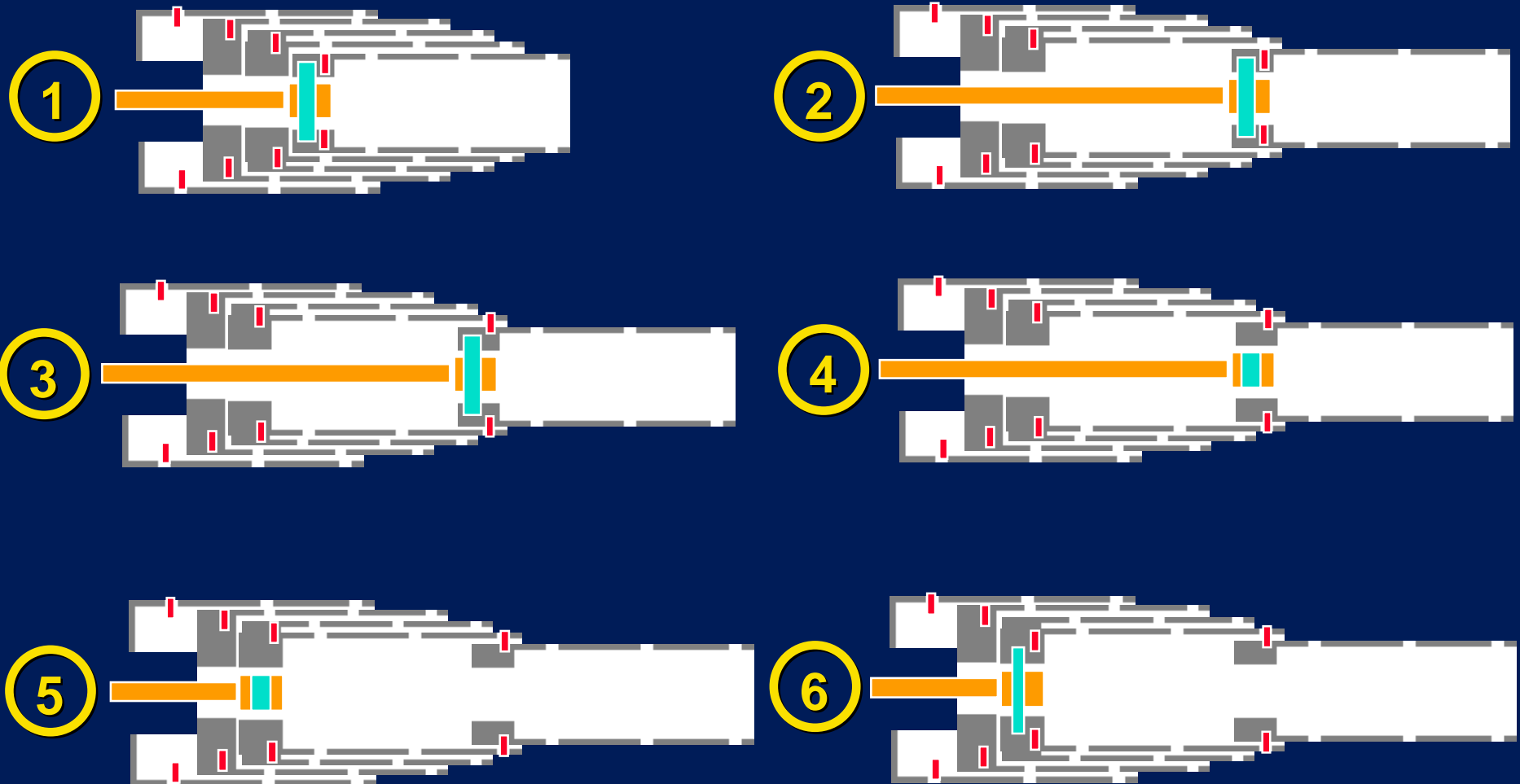
Pre-selection of boom extension mode, provides **32 different** main boom configurations for optimum strength & stability set-ups

Eliminates multiple air/electrical cable drums mounted on boom

Lower center of gravity...cylinder stays in base section

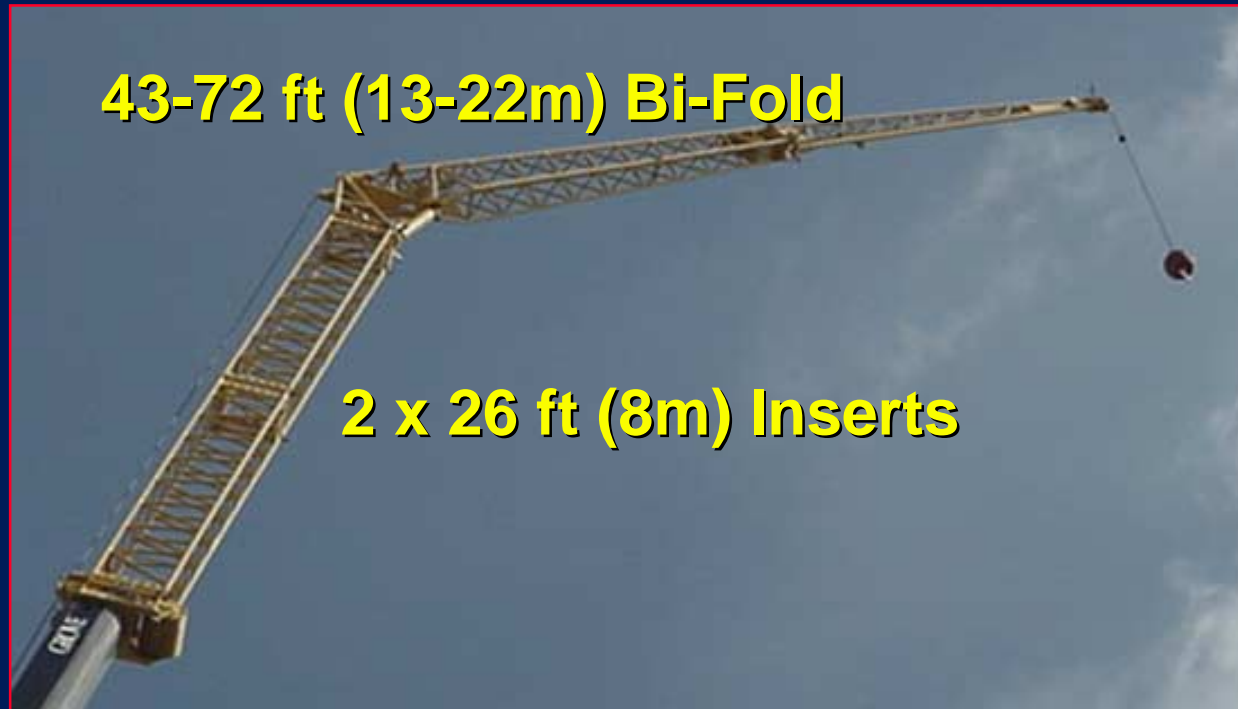


TWINLOCK™ Telescoping System *GMK6250*



Jib

GMK6250



- 43-125 ft (13.1 m-38 m) with **Hydraulic Luffing**
- 321.5 ft (98 m) Maximum tip height
- 255 ft (76 m) Maximum working radius

Hydraulic Power Luffing

Luffs from 5° to 40°



Quick disconnects



Swingaway stowed



Swingaway installed

Hydraulic Power Luffing



Superstructure Cab

GMK6250

- EKS 4 LMI
- Dual-axis joysticks
- Sliding left-side window
- Opening shatter-resistant skylight
- Opening windscreen
- Sliding rear window
- Ergonomic interior



Optional Digital pad loads



Superstructure Cab

GMK6250



Cab tiltable by approx 20°

Superstructure Engine

GMK6250

Superstructure Standard:

**Cummins 6BTA 5.9-C
165 HP (123 kW)**

Superstructure Optional:

**Mercedes-Benz OM904LA
166 Horsepower (122 kW)**



Hydraulic System

GMK6250



- 3 Separate circuits for crane operation
- 3 axial piston variable displacement pumps
- Tank capacity: 259 gal (980L)



Counterweight

GMK6250

- 154,300 lbs (69 990 kg)
- 7 sections for transport ease
- Hydraulic cylinders are incorporated into the counterweights for installation/removal



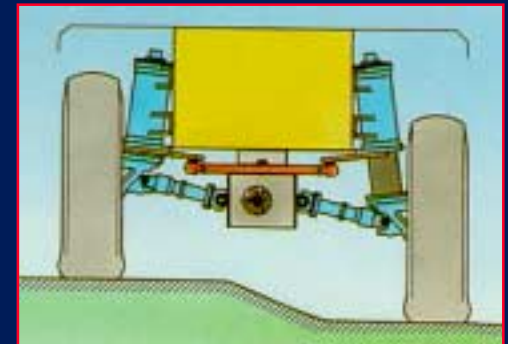
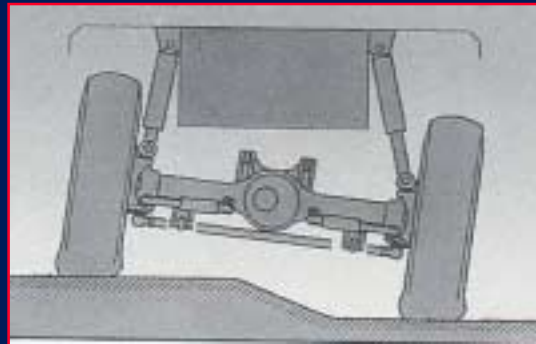
GMK6250 / 6220 Carrier
Common with GMK6300B / 6250



Suspension

GMK6250

Features proven **MEGATRAK™**
independent suspension



Engine / Transmission

GMK6250

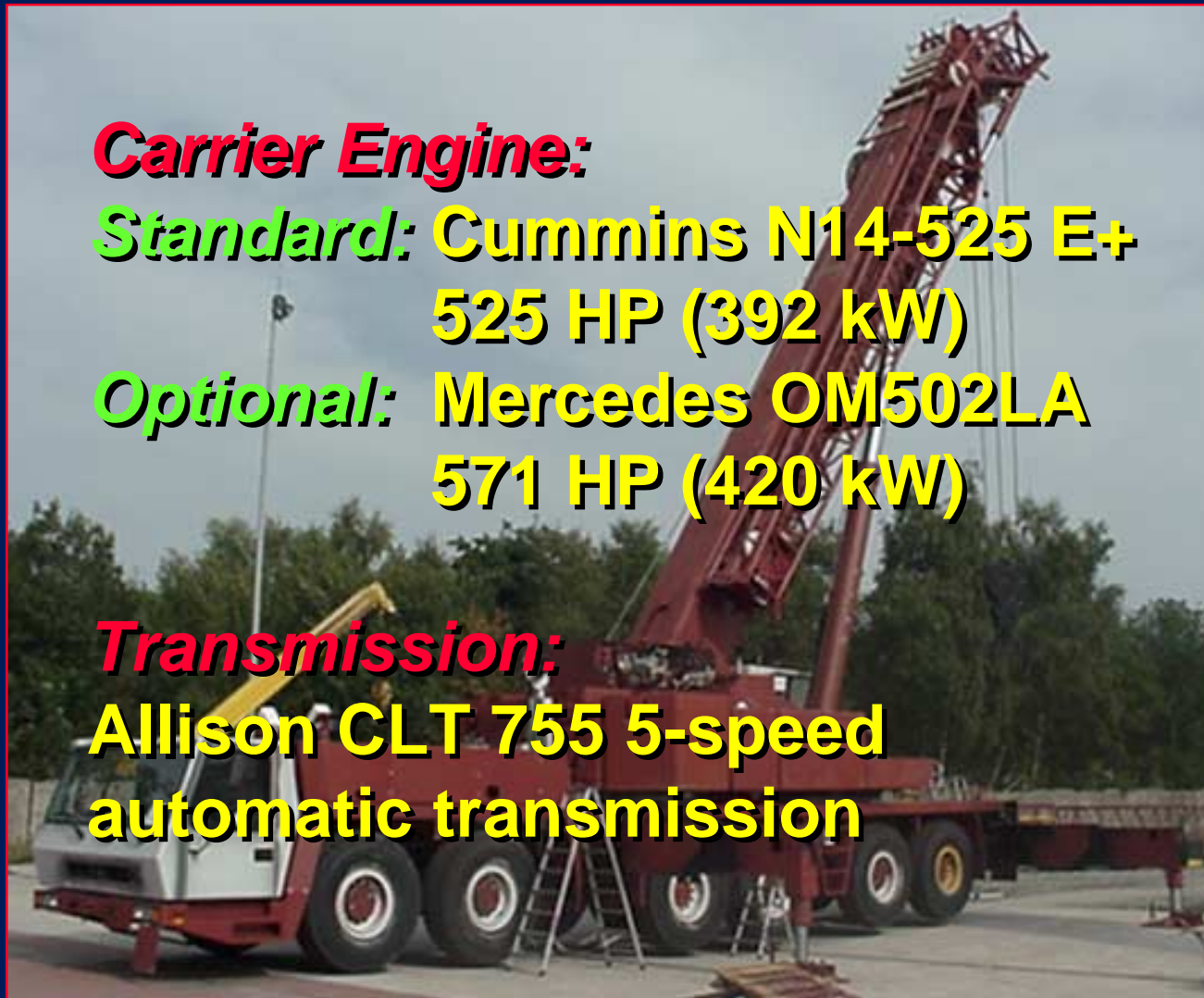
Carrier Engine:

Standard: Cummins N14-525 E+
525 HP (392 kW)

Optional: Mercedes OM502LA
571 HP (420 kW)

Transmission:

**Allison CLT 755 5-speed
automatic transmission**



Carrier Driveline

GMK6250

Drive axles: **1,2,4 & 5**



Drive / Steer: **12 x 8 x 12**

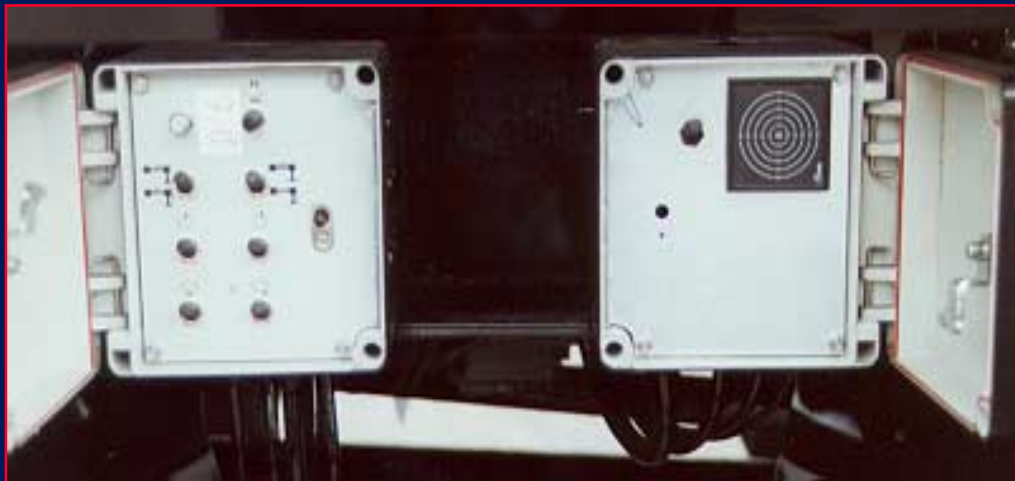
The **ONLY** 6-axle all-wheel steer AT on the market



Outriggers

GMK6250

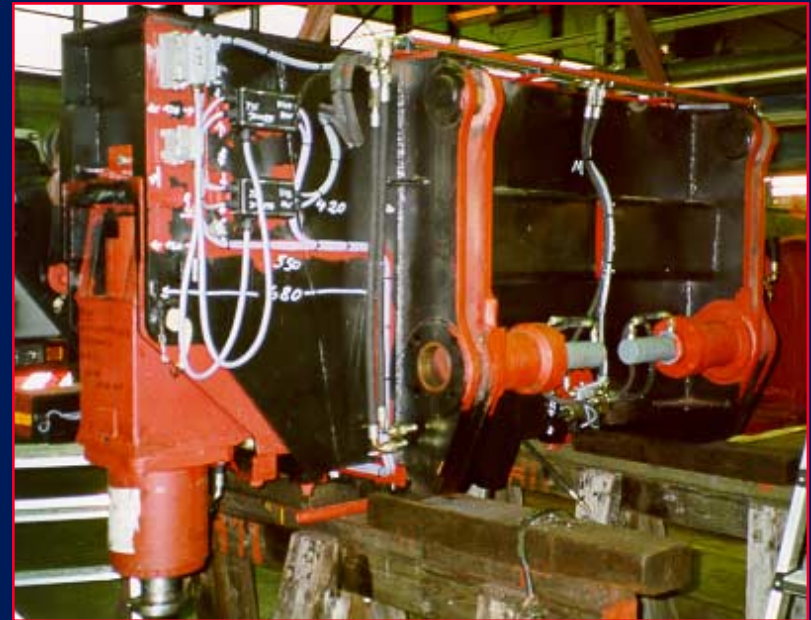
- 50% and 100% extension standard
- Controls located on each side of carrier
- Self-stowing outrigger pads
- Digital level



Outriggers

GMK6250

- Removable rear outrigger box
- **Cummins** power only
- Developed for North American roading laws



Tires

GMK6250

Tires: 20.5 R 25



GROVE®

