

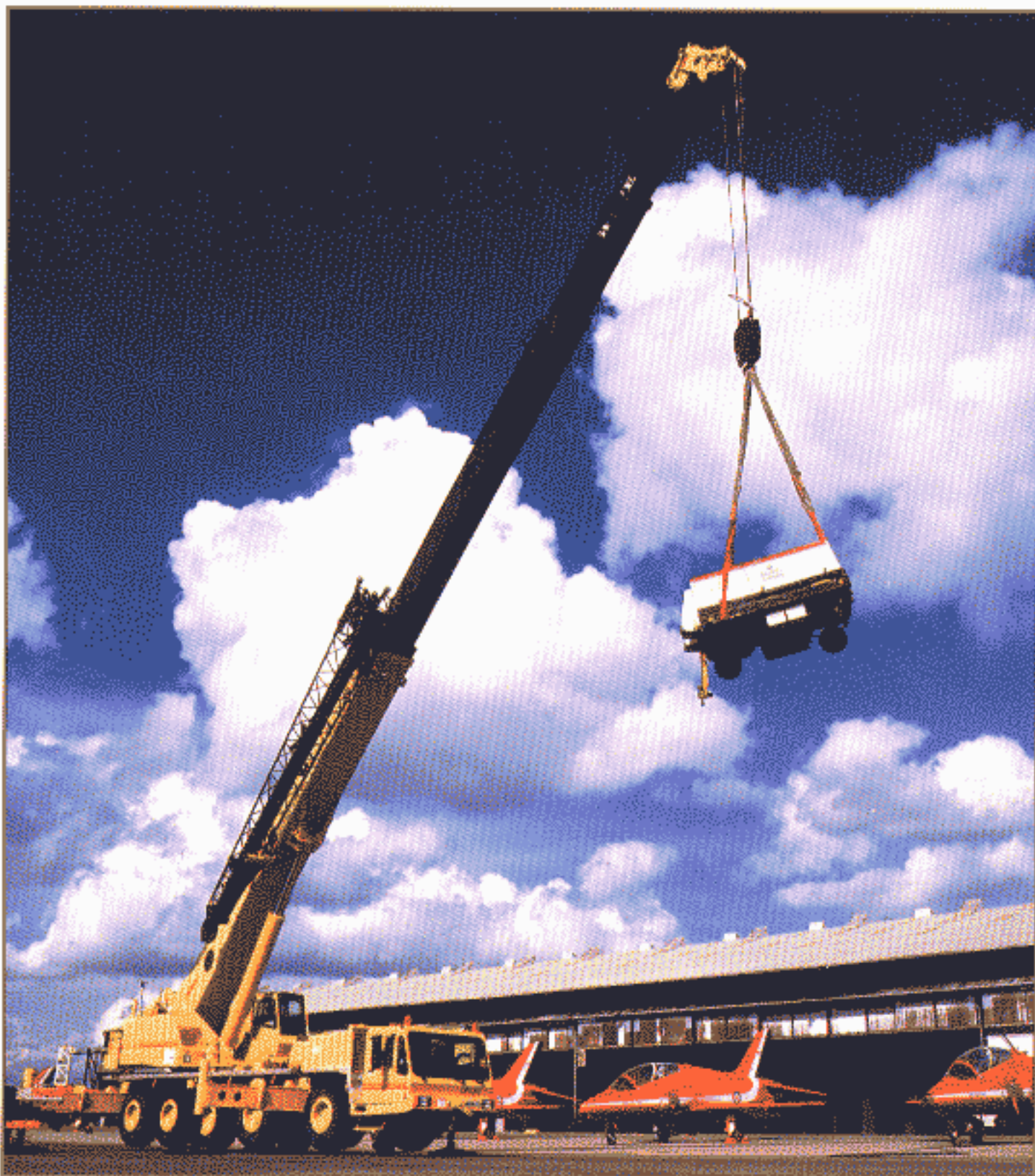


**GROVE<sup>®</sup>**  
**CRANE**

A GROVE WORLDWIDE COMPANY

# AT9120

All Terrain Hydraulic Crane



# Superstructure specifications

<b>Boom</b>	42 ft. 6 in. - 160 ft. (12.96m - 48.72m) five section trapezoidal full power boom. Maximum Tip Height: 169 ft. (51.50m).
<b>Telescopic Offsettable Swingaway</b>	33 ft. to 48 ft. to 58 ft. (10.00m to 14.60m to 17.70m) telescopic lattice swingaway offsettable at 2° or 30°. Maximum Tip Height: 226 ft. (69.00m).
<b>*Optional Fixed Length Offsettable Swingaway</b>	33 ft. (10.00m) lattice swingaway offsettable at 2° or 30°. Maximum Tip Height: 200 ft. (61.00m).
<b>*Optional Fixed Offset Jib and Fixed Extension</b>	23 ft. 6 in. plus 74 ft. to 116 ft. (7.17m extension plus 22.55m to 35.35m) jib. Offsettable at 10°, 17° or 30°. Maximum Tip Height: 264 ft. (80.50m).
<b>Boom Nose</b>	Six sheaves mounted on heavy duty tapered roller bearings, includes maximum lift attachment.
<b>Auxiliary Boom Nose</b>	Pin mounted single sheave, auxiliary boom nose.
<b>Boom Elevation</b>	Elevation from -3° to +80°.
<b>Load Moment &amp; Anti-Two Block System</b>	Standard load moment and anti-two block system with audio-visual warning and control lever lockout. These systems provide electronic display of boom angle, length, radius, tip height, relative load moment, maximum permissible load, load indication and warning of impending two-block condition.
<b>Cab</b>	Acoustically treated, with lockable sliding door, tinted glass, deluxe seat with armrest mounted single-axis controllers, full instrumentation for all superstructure engine functions with circuit test, fixed skylight and hinged windshield, sliding side and rear windows, sun visor, side and rear view mirrors, cab heater with defroster, circulating air fan and crane level indicator.
<b>Swing</b>	360° continuous rotation, planetary type with foot applied brake, spring applied parking brake. Maximum swing speed: 1.4 RPM.
<b>Counterweight 4-Axle Version</b>	Three pieces 31,085 lbs. (14100 kg) total, consisting of 5,510 lbs. (2500 kg) top, 8,375 lbs. (3800 kg) middle and 17,200 lbs. (7800 kg) bottom removable slabs.
<b>Counterweight *5-Axle Version</b>	Three pieces 29,985 lbs. (13600 kg) total, consisting of 4,410 lbs. (2000 kg) top, 8,375 lbs. (3800 kg) middle and 17,200 lbs. (7800 kg) bottom removable slabs.
<b>*Optional Counterweight Removal System</b>	Remote controlled from the superstructure cab.
<b>Engine</b>	Mercedes-Benz OM366LA, 6 cylinder turbo-charged and intercooled diesel, 366 cu. in. (6 liters), 208 bhp (155 kw) at 2,600 RPM. Torque 472 ft. lbs. (640Nm) at 1,400-1,500 RPM.

## HYDRAULIC SYSTEM

<b>Pumps</b>	4 main gear pumps combined capacity 154 GPM (583 LPM).
<b>Valves</b>	Hydraulic pilot operated proportional control valves with integral main and circuit reliefs.
<b>Filter</b>	Four pressure line filters with full flow by-pass and indicator, one for each pump.
<b>Reservoir</b>	293 gallons (1,110 liters).
<b>Oil Cooler</b>	Thermostatically controlled, electrically driven fan motor.
<b>Pressure Check Panel</b>	System pressure test panel.

## HOIST SPECIFICATIONS

Main hoist has variable displacement axial piston motor with two position control with integral spring-applied brake, third wrap and hoist rotation indicators. Auxiliary hoist has fixed vane motors with series parallel valves.

Maximum single line speed	Main Hoist		Auxiliary Hoist (HO30G-26G)	
	Low Range	High Range	Low Range	High Range
1st layer	184 FPM (56m/min)	327 FPM (100m/min)	236 FPM (72m/min)	420 FPM (128m/min)
2nd layer	199 FPM (61m/min)	354 FPM (108m/min)	256 FPM (78m/min)	456 FPM (139m/min)
3rd layer	214 FPM (65m/min)	381 FPM (116m/min)	278 FPM (85m/min)	492 FPM (150m/min)
4th layer	229 FPM (70m/min)	407 FPM (124m/min)	295 FPM (90m/min)	524 FPM (160m/min)
<b>Maximum single line pull</b>				
1st layer	25,440 lbs. (11543 kg)	12,721 lbs. (5772 kg)	17,230 lbs. (7816 kg)	8,615 lbs. (3908 kg)
2nd layer	23,538 lbs. (10680 kg)	11,770 lbs. (5340 kg)	15,860 lbs. (7194 kg)	7,930 lbs. (3597 kg)
3rd layer	21,872 lbs. (9924 kg)	10,936 lbs. (4962 kg)	14,690 lbs. (6622 kg)	7,345 lbs. (3331 kg)
4th layer	20,453 lbs. (9280 kg)	9,045 lbs. (4140 kg)	13,680 lbs. (6204 kg)	6,840 lbs. (3102 kg)
<b>Maximum permissible line pull</b>		19,880 lbs. (9020 kg)		13,330 lbs. (6050 kg)
<b>Maximum rope stowage</b>		892 ft. x 1 in. (272m x 25mm)		787 ft. x 3/4 in. (240m x 19mm)
<b>Standard rope supplied</b>		720 ft. x 1 in. (220m x 25mm)		787 ft. x 3/4 in. (240m x 19mm)

\*Denotes optional equipment

# Carrier specifications

<b>Frame</b>	High strength alloy steel, all welded box section design.
<b>Outrigger System</b>	Hydraulic telescopic beam and inverted outrigger jacks. Partial outrigger extension of 16 ft. 11 in. (5.15m) with maximum counterweight only.
<b>Outrigger Controls</b>	Both sides of carrier and superstructure cab.
<b>Engine</b>	Mercedes-Benz OM442LA, 8 cylinder turbocharged and charge cooled diesel, 891 cu. in. (14.6 L), 430 bhp (320 kw) @ 2,100 RPM. Maximum torque 1,327 ft. lbs. (1,800Nm) @ 1,100-1,600 RPM.
<b>Fuel Tank Capacity</b>	114 gallons (432 liters).
<b>Electrical System</b>	24-volt (including starting).
<b>Drive/Steer</b>	8x6x8 on/off highway, *8x8x8 on/off highway. *10x6x8 on/off highway, *10x8x8 on/off highway.
<b>Steering</b>	Fully independent power assisted steering. Axles 1 & 2- semi integral with transmission driven emergency steering. Axle 3* - non-steer. Axles 4 & 5- electro/hydraulic full independent operation. Axles 1, 2, 4 & 5-steering on highway.
<b>Transmission</b>	Five speeds forward and one reverse. Fully automatic, with integral torque converter, automatic lock up and full auto shift protection.
<b>Axles</b>	Axle 1 steer only *optional drive. Axles 2, 4 and 5 drive/steer. *Axle 3 non-drive/non-steer. All driven axles with cross-axle differential locks. Inter-axle differential locks between axles 4 and 5.
<b>Suspension</b>	Hydrogas front and rear, hydraulic lockout and automatic leveling system in cab.
<b>Brakes</b>	Dual line full air on all wheels. Spring-applied emergency/parking brake on axles 3, 4, and 5. Engine exhaust brake.
<b>Tires</b>	20.5R25 on/off highway radials.
<b>Lights</b>	Full lighting package including turn indicators, head, tail, brake and hazard warning lights.
<b>Cab</b>	Full width, two man left hand drive design. Acoustically treated, fully trimmed, fully adjustable seats with headrests, tinted windows, adjustable steering column, heater with defroster, dual rear view mirrors, complete driving controls and engine instrumentation.
<b>Maximum Speed</b>	43.5 MPH (70 km/h).
<b>Maximum Gradeability</b>	49% (based on 156,996 lbs. [71214 kg] basic machine weight).
<b>Weight</b>	Basic machine 156,996 lbs. (71214 kg).
<b>Miscellaneous Standard Equipment</b>	Access steps, back up alarm, maintenance tool kit, fire extinguishers to both cabs, tire inflation kit, cab heaters, lockable caps on fuel tanks.

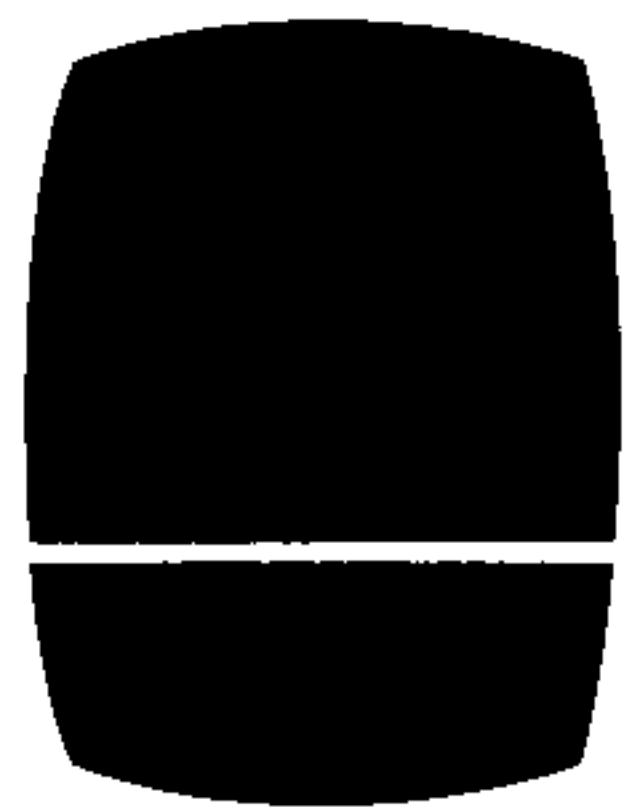
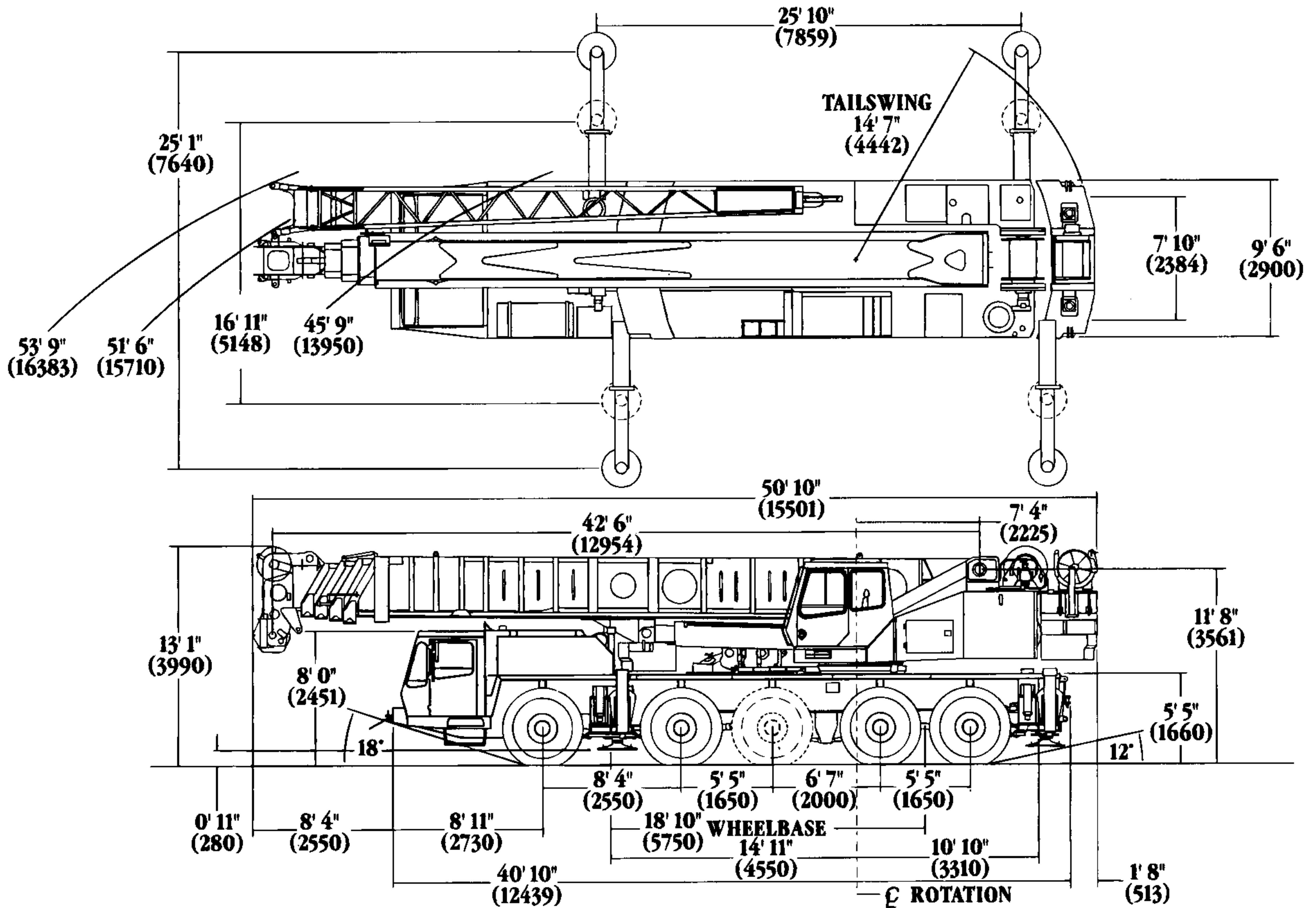
## \*Optional Equipment

- \* Drive/steer controls from superstructure cab
- \* Lattice boom extension
- \* 116 ft. (35.35m) fixed offset jib
- \* Hookblocks
- \* Diesel or propane cab heaters
- \* Armor plated glass skylight
- \* Spotlights
- \* Spare wheel/tire assembly and stowage
- \* Comprehensive tool kit
- \* 360° rotating beacons
- \* Telma retarder
- \* Automatic counterweight removal
- \* 8x8x8, 10x6x8, 10x8x8 drive/steer
- \* Joystick dual-axis controllers.

\*Denotes optional equipment

# Dimensions

# AT9120 Series



**GROVE**<sup>®</sup>  
worldwide

Constant improvement and engineering progress make it necessary that we reserve the right to make specification, equipment, and price changes without notice. Illustrations shown may include optional equipment and accessories and may not include all standard equipment.

Distributed By:

**Grove Worldwide - World Headquarters**

1565 Buchanan Trail East

Shady Grove, Pennsylvania 17256

Phone: (717) 597-8121 Fax: (717) 597-4062

**Grove North America**

P.O. Box 21, Shady Grove, Pennsylvania 17256

Western Hemisphere, Asia/Pacific

Phone: (717) 597-8121 Fax: (717) 597-4062

**Grove Europe\***

Sunderland, England SR4 6TT

Europe, Africa, Middle East, Near East

Phone: (0191) 565-6281 Fax: (0191) 564-0442

\* Grove Europe Limited, Registered in England, Number 1845128, Registered office, Crown Works, Pallion, Sunderland, Tyne & Wear, England SR4 6TT.