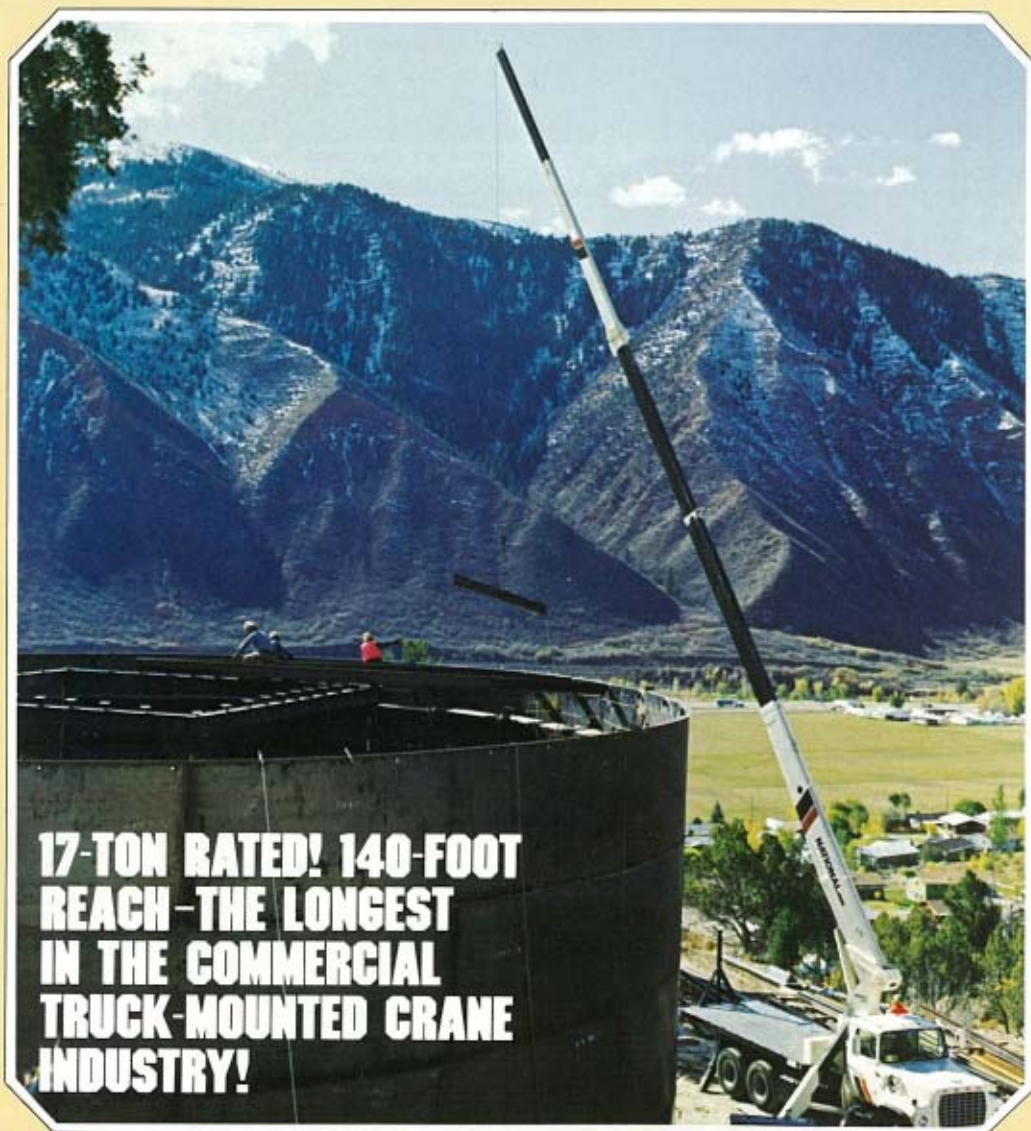


NATIONAL SERIES 800

Truck-mounted telescoping cranes and accessories

Maximum height: 140 feet/42.67 meters

Maximum capacity: 34,000 pounds/15.5 metric tons



**17-TON RATED! 140-FOOT
REACH—THE LONGEST
IN THE COMMERCIAL
TRUCK-MOUNTED CRANE
INDUSTRY!**

**NATIONAL—AMERICA'S LEADING MAKER
OF TRUCK-MOUNTED CRANES**

NATIONAL SERIES 800

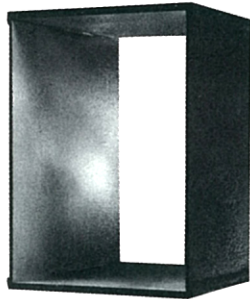
National is America's leading maker of commercial truck-mounted telescoping and articulating cranes. We build cranes for almost every job. And nobody builds them better.

Our Series 800 is the largest capacity crane we've ever built. It gives you even more of what you buy a crane for:

- 17-ton rated
- Longest reach in its class—up to 140 feet high
- The industry's first fully hydraulic four-section boom
- Mounts on most standard heavy-duty commercial trucks with the versatility of four mounting configurations
- No counterweighting required with some mounting configurations
- High performance winch with "Burst-of-Speed" feature
- Heavy duty planetary rotation
- Wide 18-foot outrigger span
- A-frame rear stabilizers
- Unitized mounting system
- High strength, low-alloy steel in the boom
- Built-in serviceability
- Complete accessory line adds to versatility

Strong Booms

Extra strength and lower boom weight mean greater capacity for you, so Series 800 telescoping boom sections are made strong, yet light, fabricated from four high-strength steel members welded with perpendicular corners. This box-section construction lets us use thicker top and bottom plates for extra strength. And thinner side plates for increased capacity through lower boom weight. Strong, low-alloy steel is used, welded with advanced, automatic low-hydrogen techniques for extra strong seams. Corner seams are ultrasonically tested for proper penetration.

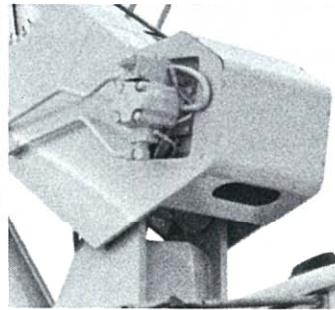


Sequential Extension

Our boom section interlock provides sequential extension, even under full load. Larger, stronger boom sections extend first, for greater strength. Our locks are mechanical, not hydraulic like others', for greater reliability with no excessive noise or wasted hydraulic power.

Direct Mounted Holding Valves

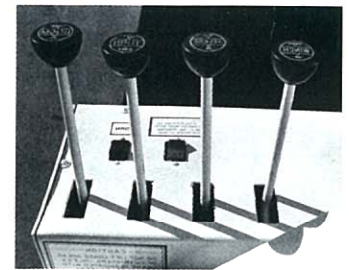
On the Series 800, all holding valves are mounted directly to the cylinders, for added safety in the event of hose failure.



High Performance Planetary Winch

Every Series 800 comes standard with a high performance planetary gear drive winch with a "Burst-of-Speed" feature for faster, more efficient pay-out and pick-up of unloaded cable. The "Burst-of-Speed" winch circuitry increases line speed up to 60% over normal.

This high capacity winch features high line pull and faster standard speed. For fine control, both a brake and counter-balance valve are standard. The winch is filled with our largest diameter cable—9/16". See the winch data chart on page seven for further information.



Dual Controls

Dual controls are standard. The extra-fine metering and low spool forces give you smoother, more precise control. Crane controls are identical on each side, so you always work the same control with the same hand. Each station is equipped with kill and audible warning switches.

Planetary Turret Rotation

The Series 800 uses a tough planetary rotation gearbox with a spring-applied hydraulic release brake and a slip-through feature that helps protect the rotation system against damage from accidental side loading.

All rotation bearing and gearbox mounting surfaces are machined after welding to eliminate welding distortion. This provides a smooth surface for proper rotation gear alignment, longer life, and reduced maintenance.



17-TON RATED! 140-FOOT REACH-THE LONGEST IN THE COMMERCIAL TRUCK-MOUNTED CRANE INDUSTRY!

Wider Outriggers

We've given the Series 800 the widest outrigger span in its class. Massive A-frame arms that spread 18 feet provide an extra wide stance and better leveling on uneven ground. You get greater strength and stability with lower unit weight, so you need less truck and can carry more payload. The outriggers retract without binding under load, moving up, then in.

National's extra wide outriggers are located behind the operator to increase the working area over the sides and decrease the front stabilizer loading when working over the front.



Lower Truck Requirements

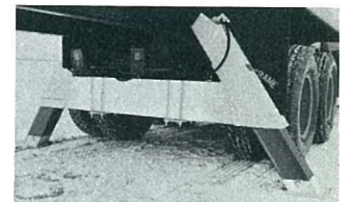
We engineered the Series 800 to lower your truck requirements, making it less expensive and easier to get. Our wider outrigger span, A-frame rear stabilizers and unitized mount take the stress, not the truck. That means the 800 can mount on trucks with lower axle ratings and still meet DOT and stability standards with ease. It all adds up to lower maintenance, lower cost and longer truck life for you.

Unitized Mounting

Our unitized mount includes a one-piece, 10-inch deep sub-base that extends along the frame and supports the crane and bed. It reduces counterweighting and increases stiffness and stability. Reinforcing is not required on trucks with 15.9-inch³ section modulus frames of 100,000 psi minimum yield steel. The crane and unitized mount ship separately, then bolt together to form one solid, integrated unit.

A-Frame Stabilizers

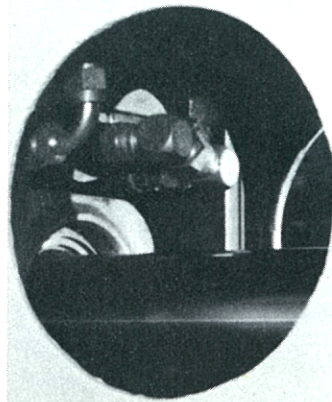
The Series 800 also is equipped with A-frame rear stabilizers with a wide 10-foot span for greater stability and lower counterweight requirements.



Easy Service, Low Downtime

We designed the Series 800 for easy service and minimum downtime. Compare these features:

- Console cover for easy access to control valves
- Boom access ports for easy maintenance of cylinders and locks (note photo)
- Rotation drive and brake located outside of frame for easy access and service



- 37° flare fittings used throughout to reduce the possibility of fluid leakage
- Extra-capacity (60 gallons) oil reservoir to reduce heat buildup. Complete with standard clean-out, suction strainer and magnetic plug for easy maintenance, long life.
- Spin-on hydraulic filter located on outside of frame for easy access.

NOW . . .

THE NATIONAL 875 WITH ONE-STEP 4-SECTION BOOM EXTENSION

Some said it couldn't be done. National Crane has done it!

We have designed a tough and reliable, fully-hydraulic, four-section, 75-foot boom for use with our Series 800 truck-mounted telescoping crane. The new Model 875 offers the longest commercial truck boom of its class currently in production and is the commercial truck industry's first fully-hydraulic four-section unit.

When combined with the new 55-foot side-stowing jib, the 875 reaches to a height of 140 feet. All boom sections extend and retract hydraulically for greater ease in handling. At the full 140 feet, the National 875 has a capacity of 2,000 pounds. With the jib stowed and the booms fully extended to 85 feet above ground level, the 875 will lift more than 9,000 pounds. The unit's maximum capacity is 34,000 pounds.

The 875 is specifically designed for placing materials at job sites requiring more-than-typical reach. Like all Nationals, it is ideal for loading,

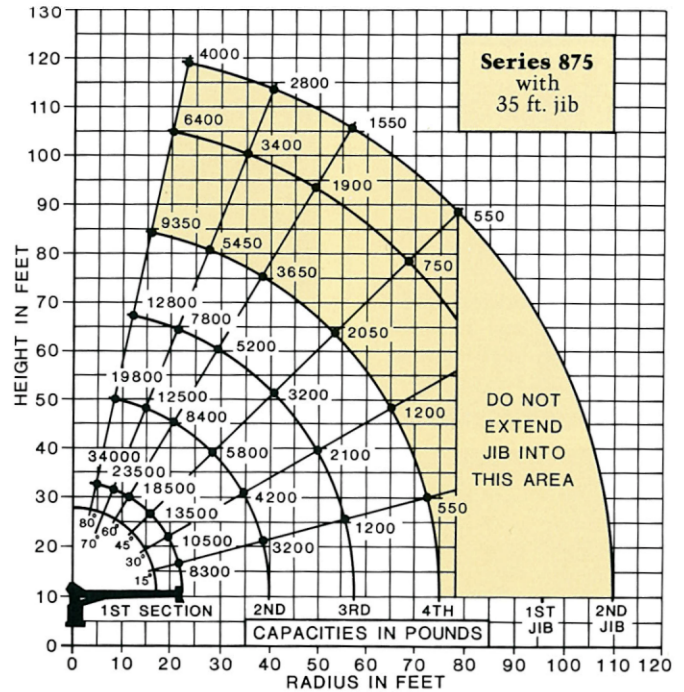
transporting and unloading materials. The one-step, sequential-extension boom saves time, effort, and money. It sets up fast at the job site. There is no need for the operator to leave the controls to set up the full boom length. There are no awkward pin/hole alignments required in the boom extension procedure.

The 875 is comparatively lightweight. It requires only the basic truck mounting specifications for other 800 Series models. Yet, its capabilities dwarf those of competitive, shorter, four-section, power-pin jib booms. It is available with a 15-foot angling jib. Contact the factory for details.

The 875's One Step Features:

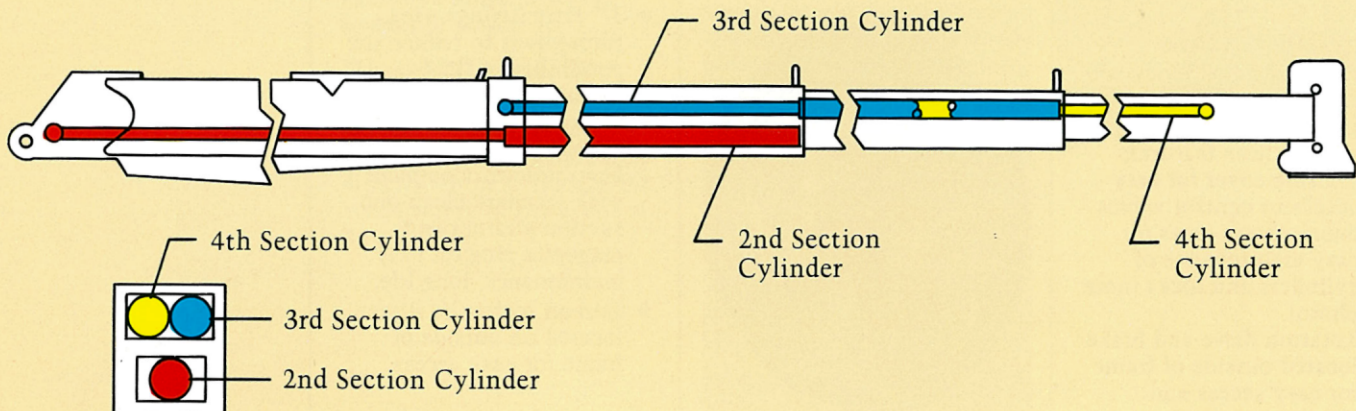
- Fast job site set up
- No reduced capacities with booms retracted
- No time-consuming pin/hole alignments
- No need for operator to leave controls to set up full boom length
- More reach
- Heavy-duty capacity
- Ability to add jib options up to 140-foot height

The capacities shown on this load rating chart will be reduced when the crane is equipped with the self-stowing auger and other boom-mounted accessories.



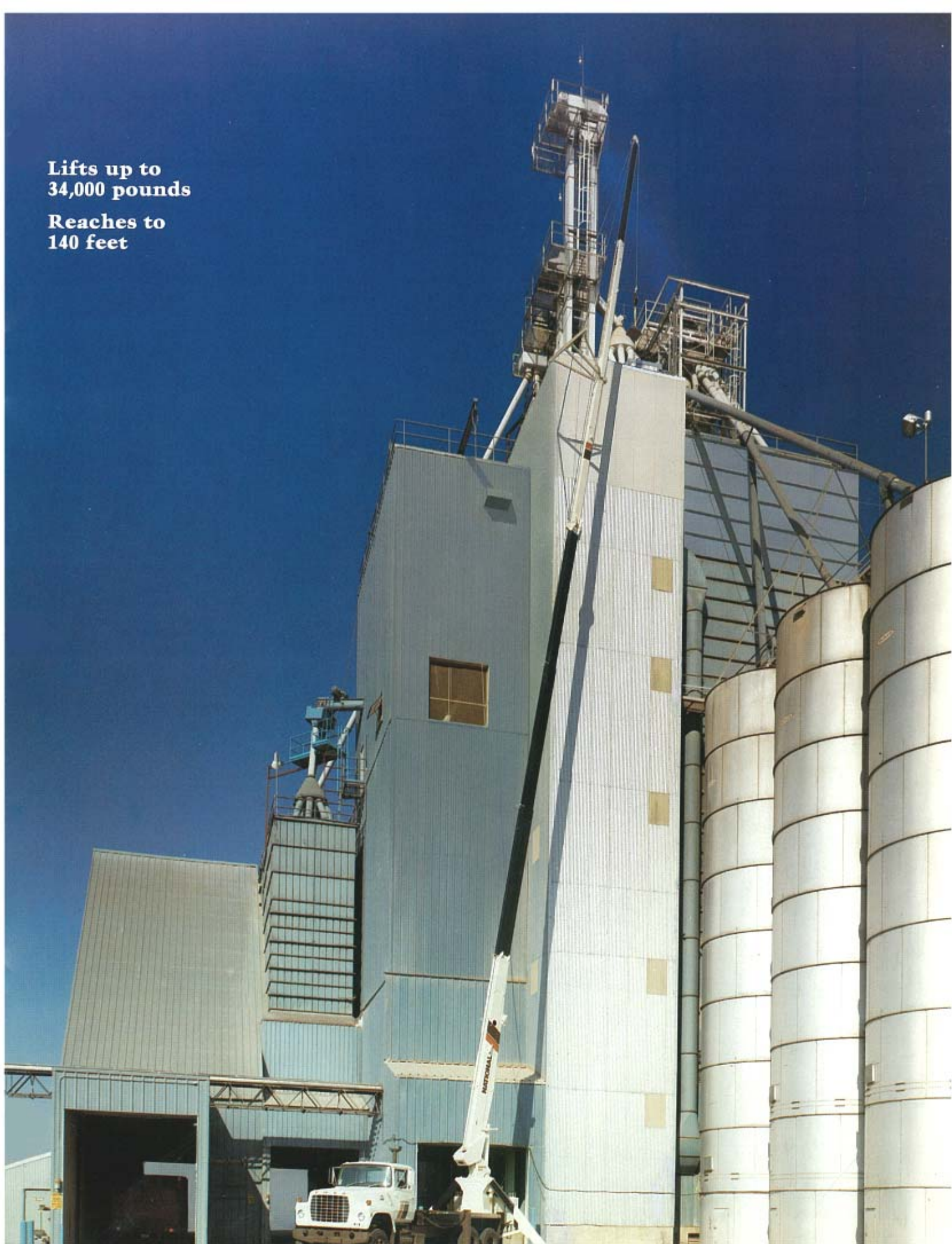
Do not exceed jib capacities at any reduced boom length.

Do not operate cranes or accessories within 10 feet of live power lines.



**Lifts up to
34,000 pounds**

**Reaches to
140 feet**



NATIONAL SERIES 800 BOOMS AND JIBS

Reaches to 140 feet/42.7 meters available

The National Series 800 is available with a variety of booms and jibs. One of these combinations is right for the work you do.

Pick the telescoping boom you want, then add one of our jib options as a strong, low-cost way to increase the

capability and versatility of your Series 800 for long-reach, high-capacity jobs.

The charts on the following page show the reaches and capacities of two popular and versatile Series 800 boom/jib combinations. Your National dealer can provide detailed information on other combinations.

Boom and Jib Combinations Telescoping Booms

- Model 839 22- to 39-foot 2 section
- Model 856 22- to 56-foot 3 section
- Model 875 22- to 75-foot 4 section

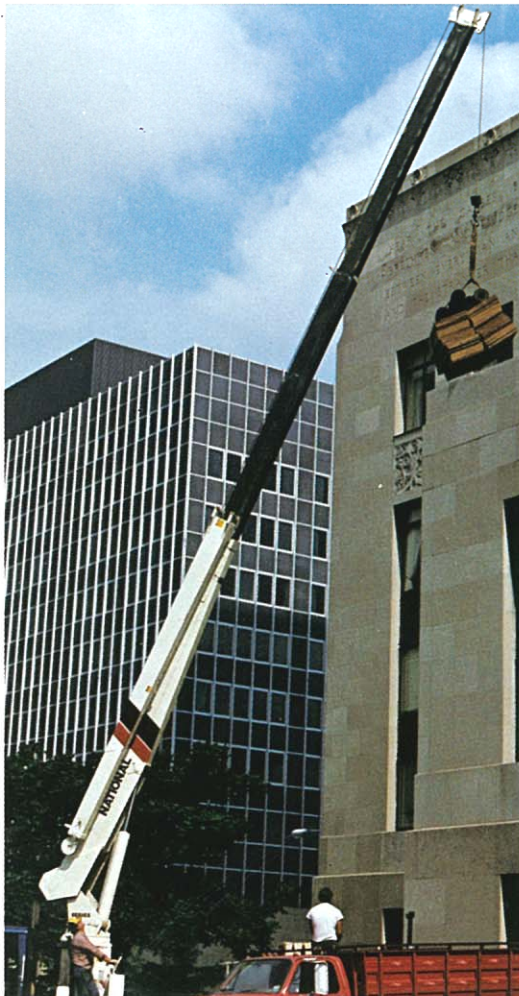
Jib Options (side stowing)

- 21-foot straight (for Models 839, 856, 875)
- 21- to 35-foot manual pull-out (for Models 839, 856, 875)
- 21- to 55-foot manual pull-out (for Model 875)
- 15-foot angling jib (for Models 856, 875)

856 Capacity*

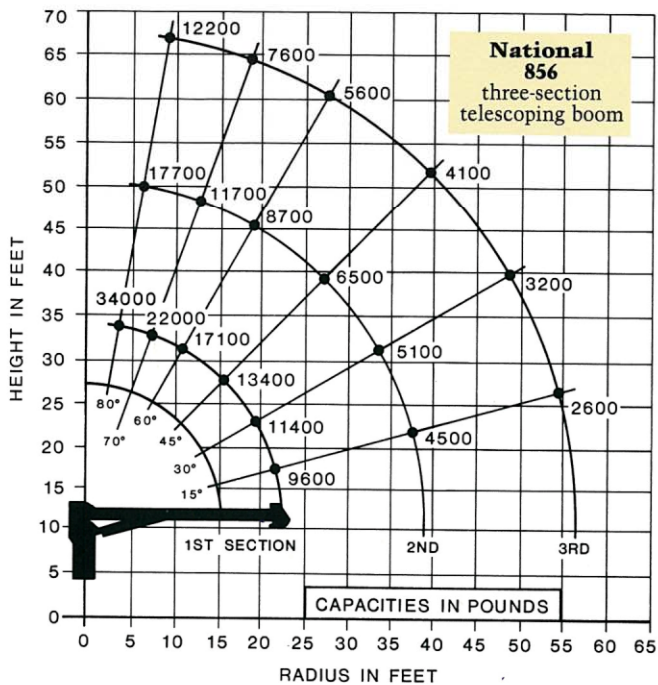
Radius	All Booms Retracted	Second Section Extended	Third Section Extended
Maximum Capacity	34,000	n/a	n/a
8'	21,300	16,600	n/a
12'	16,300	12,900	11,100
16'	13,100	10,400	9,100
20'	10,600	8,550	7,400
24'		7,500	6,500
28'		6,400	5,600
32'		5,450	5,100
36'		4,750	4,600
40'			4,100
44'			3,650
48'			3,200
52'			2,800
56'			

*Capacities shown are for 856 only. Capacities vary for cranes equipped with jibs or attachments. Contact factory for specific load rating information.

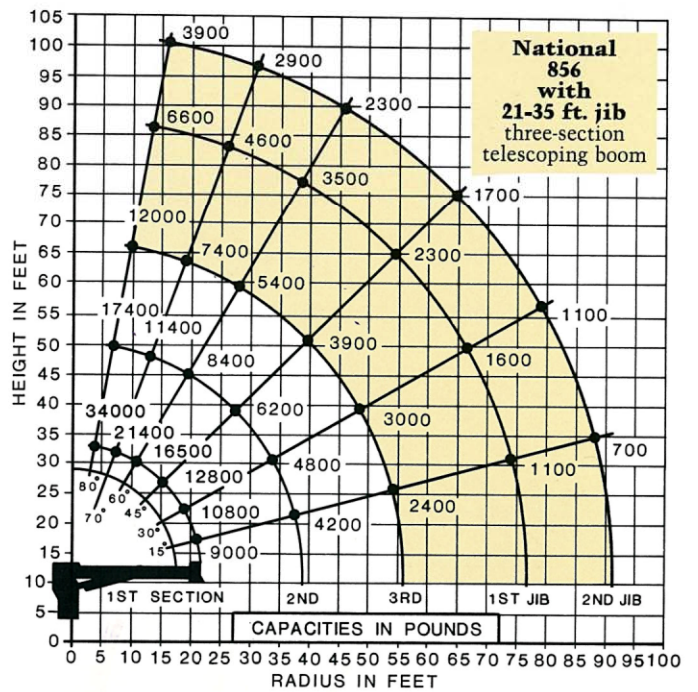


Do not operate cranes or accessories within 10 feet of live power lines.

1. Load ratings shown on the above charts are maximum allowable loads with the outriggers properly extended on a firm, level surface and the crane leveled and mounted in a factory-recommended configuration.
2. Always level the crane with the level indicator located on the crane frame.
3. The operator must reduce loads to allow for factors such as wind, ground conditions, operating speeds and the effect of freely suspended loads.
4. Overloading the crane may cause structural collapse or instability.
5. Weights of any accessories attached to the boom or loadline must be deducted from the load chart capacities.
6. Do not exceed jib capacities at any reduced boom length.



The capacities shown on this load rating chart will be reduced when the crane is equipped with the self-stowing auger and other boom-mounted accessories.



The capacities shown on this load rating chart will be reduced when the crane is equipped with the self-stowing auger and other boom-mounted accessories.



Planetary Winch Data

	1 Part	2 Part	3 Part	4 Part	Caution Do not dead head line block against boom tip when extending boom. Keep at least 3 wraps of line on drum at all times. Use only 9/16" diameter 8 x 19 or 8 x 25 IWRC cable on this machine. Average breaking strength of wire rope 29,750 pounds. Maximum allowable 3.5:1 line pull at design factor is 8,500 pounds.
Std. Speed	150 F.P.M.	75 F.P.M.	50 F.P.M.	37 F.P.M.	
Std. Line Pull	8,400 Lbs.	16,800 Lbs.	25,500 Lbs.	34,000 Lbs.	
Burst-of-Speed Line Pull	240 F.P.M. 3,000 Lbs.	120 F.P.M. 6,000 Lbs.	80 F.P.M. 9,000 Lbs.	60 F.P.M. 12,000 Lbs.	

Maximum bare drum pulls are 10,200 pounds, but because of the 3.5 to 1 OSHA safety factor, maximum rated pull on a single line cannot exceed 8,500 pounds.

NATIONAL SERIES 800 TRUCK SPECIFICATIONS

Minimum Truck Requirements

• GAWR

Front 16,000 pounds
Rear 32,000 pounds

GAWR means Gross Axle Weight Rating and is dependent on all components of the vehicle, such as axles, tires, springs, frame, etc., meeting manufacturer's recommendations. Always specify GAWR when purchasing trucks.

• Cab to Axle

(CA) 144 inches

• Wheelbase

(WB) 222 inches

• Frame Requirements

Care must be taken in truck selection. Consider the following requirements:

- (1) Section Modulus (between axles):
 - Minimum of 32 inch³ (50,000 PSI steel), or
 - Minimum of 15.9 inch³ (110,000 PSI steel), or
 - Capable of being reinforced to these requirements.
- (2) Front and/or rear stabilizers:
 - Minimum 15 inch³ section modulus, or
 - Capable of being reinforced to 15 inch³ (through suspension to front and/or rear)
 - Tapered front frame cannot be reinforced to the required strength.

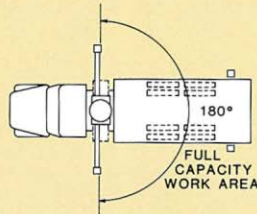
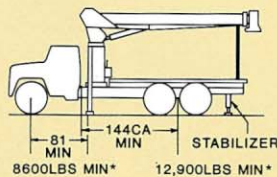
NOTE: Minimum axle requirements may increase with the use of longer wheelbase or service bodies. Some diesel engines require variable speed governor and energize-to-run fuel solenoid for smooth crane operation. Contact factory for further information.

Mounting Configurations

The versatility of the Series 800 can be enhanced by the following mounting configurations. The complete unit must be installed in accordance with factory requirements and a test performed to determine actual stability and counterweight requirements since individual truck chassis vary.

Configuration 1:

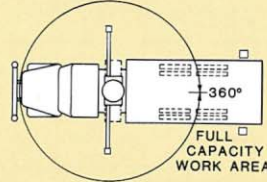
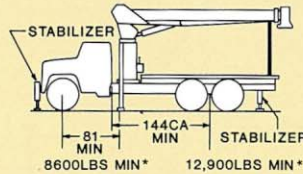
This is the least expensive mounting method. This mount, with the crane mounted behind the truck cab, requires the least weight for stability, thus, you can haul larger payloads on your truck. Requires 16,000 pound Gross Axle Weight Rating Front, 32,000 pound Gross Axle Weight Rating Rear, rear stabilizers, and bed with counterweight. Full capacity work area is rear 180° of vehicle from outrigger to outrigger.



Configuration 2:

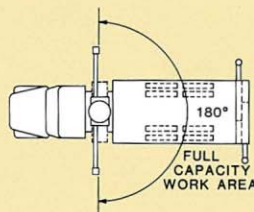
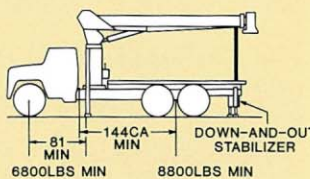
This mount requires front stabilizers and additional counterweight in the underside of the bed for full capacity 360° around the truck. Care must be taken in truck selection. The front over-frame outriggers give

the machine a solid base, helping the operator control his loads precisely. Requires 16,000 pound Gross Axle Weight Rating Front, 32,000 pound Gross Axle Weight Rating Rear, and front and rear stabilizers.



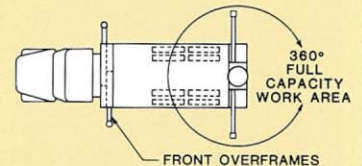
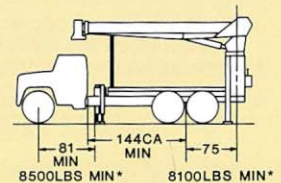
Configuration 3:

This configuration allows a Series 800 mount behind the cab on a 12,000 pound diesel truck with no counterweight. Some counterweight is required when mount is on a gas truck. Requires 12,000 pound Gross Axle Weight Rating Front, 32,000 pound Gross Axle Weight Rating Rear, down-and-out hydraulic crossframe rear stabilizers, and special rear mount sub-base. Full capacity work area is rear 180° of vehicle from outrigger to outrigger.



Configuration 4:

The advantages of a rear-mounted Series 800 are: (1) allows the operator to effectively use the close-in working area to lift heavier loads, (2) 360° stability at full rated load, and (3) front axle weight rating lower than the standard behind-the-cab mounts. Hydraulic out-and-down outriggers located behind the cab are necessary to keep the total weight of the unit to a minimum with full stability. Requires 12,000 pound Gross Axle Weight Rating Front, 32,000 pound Gross Axle Weight Rating Rear, front overframes, special rear mount sub-base, and bed with counterweight. Contact the factory for complete information on this mounting configuration.



*Actual axle scale weights prior to installation of crane, bed, torsion box and stabilizers.



NATIONAL

SERIES 800

ALTER

FONTAINE

NATIONAL SERIES 800 ACCESSORIES

Every Series 800 is more than just a crane. It's part of the National Lifting System.

The National Lifting System lets your 800 do more than just lift or handle materials. It lets you turn one truck-mounted crane into a machine that will perform the functions of a whole fleet of specialized vehicles—and at a fraction of the cost.

Because it can do so many jobs from start to finish, you save time, money and manpower on almost every job you do. You'll find you can do more, faster, with less equipment. And that's money in your pocket.

National's accessories are designed and manufactured to the same excellent standards as our cranes. This provides you with years of low maintenance, high-productivity service.

Get the most from your National 800... make it more than just a crane with low-cost, hardworking accessories from the National Lifting System.

Remote Controls

The latest edition is our one-hand remote control. Ideal for use where precise control and total load visibility are required.

Fine metering and instant response mean operators can position loads or work platforms easily.

Now more reliable than ever with solid state circuitry and fewer parts than previous systems. Other improvements include higher operating speeds and modular design.

Available in two models: R4 with tilt, turn, telescope and winch functions, and R3 with tilt, turn and telescope only. R3 should be used to control cranes from basket or platform, using optional extension cables.

A priority control valve, operated by a trigger on the remote control unit, regulates oil flow and gives you fingertip speed control over all crane functions.

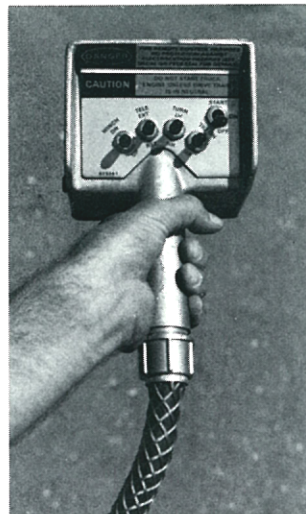
National remote control is the lightweight, easy-to-use way to add extra versatility to your crane. Consult your dealer or the National Service Center for availability.

Model R3

Tilt, turn and telescope

Model R4

Tilt, turn, telescope and winch



Caution

Do not operate cranes or accessories within 10 feet of live power lines:

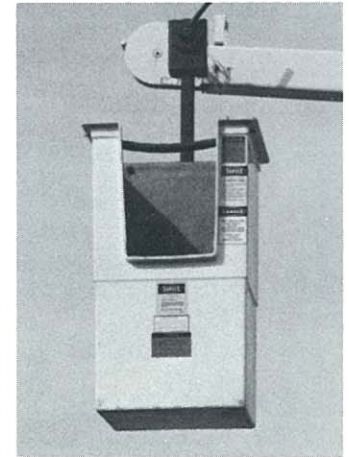
- Remote Controls
- One Person Basket
- Two Person Basket
- Personnel Platform
- Two Speed Self-Stowing Auger
- Hydraulic Tilting Pole Grab
- Loose Material Clam Bucket

Do not exceed jib capacities at any reduced boom lengths.

One Person Basket

Strong, lightweight fiberglass basket with 300 pounds capacity puts personnel where you want them for tough maintenance and installation jobs. Optional dual basket bracket for two-basket operation. Easy on-off. Safety belts included. With basket(s) attached to the crane, the crane must not be operated at positions where the crane load chart shows less than the following capacities:

- One fiberglass basket—550 pounds
- Two fiberglass baskets—1,100 pounds



**Model B1
Model B1-L**
With lock

Two Person Basket

Extra capacity steel basket for even greater crane versatility. Swing mounted to self-level. Lever operated friction brake for stability and locking. Safety belts included. For use with all Series 800 boom options and the 8FJ15A angling jib. The basket must not be used in load-rated areas where the crane load chart shows capacities less than 1,250 pounds. The maximum capacity of the basket is 750 pounds.



Model BS-1
5 ft. yoke

Personnel Platform

This extra-strength 3 x 6 ft. steel platform will carry up to 1,000 pounds and operate at working heights up to 102 feet with the 75-foot boom and the 15-foot angling jib. It is hydraulically self-leveling and protected by safety valves. Safety belts included. Fold-down sides standard.

Optional manual rotator available for precise placement of the platform. Easy-to-operate crank rotates the platform through a dependable chain drive. Continuous rotation. Locks in position.



The personnel platform must not be operated in load-rated areas where the load chart shows capacities less than 1,800 pounds.

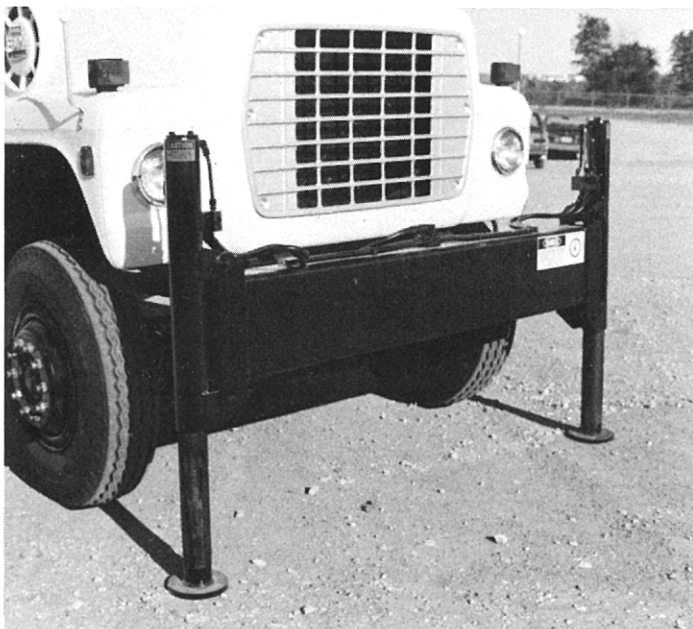
**Model SLP
Model SLRP**

Front-Mounted Stabilizers

National offers front-mounted stabilizers for use when loads are to be lifted over the front of the vehicle. They provide increased stability and a solid working base, while relieving the load on tires and suspension. Front stabilizers are available in both fixed

(FSH-25) and folding (FSHF-25) configurations. The folding front stabilizers allow the legs to be swung away to accommodate tilting hood trucks. These stabilizers may not fit all frames. Check with the factory for truck frame requirements.

FSH-25
FSHF-25



- Vertical travel 25"
- Ground Penetration (38" frame height) 13"
- Operation All hydraulic
- Span 8'
- Controls Operated from either crane control station

Loose Material Clam Bucket

Increase the flexibility of your National crane with a National clam bucket. Use this versatile accessory to load or move up to 1/2 cubic yard of loose materials with each bite. Hooks easily to loadline, comes with 50 feet of hydraulic hose on automatic reel and quick-connect fittings. Just open the bucket and place the material where it's needed.

Model LMC

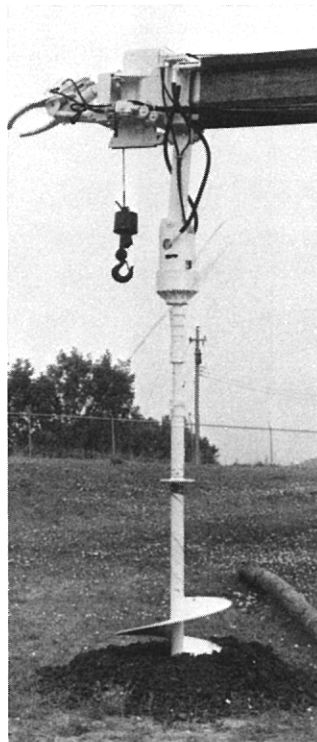


Two-Speed Self-Stowing Auger

Our two-speed hydraulic auger gives your National crane even greater versatility. It locks onto the outer end of your second section boom, giving you digging depths up to 12 feet in a 38-foot radius (with 56-foot boom). When stowed, the unit locks to the first section boom, freeing the second and third for other work. gives you the choice of high speed/low torque or low speed/high torque digging. Selection of the proper mode for soil and digging conditions is easy and flightings are available up to 36 inches. All feed lines are fully protected and designed to work without kinking, twists or tension.

Model 25A

Speed	Torque
High/66 rpm	2,900 ft./lbs.
Low/27 rpm	7,100 ft./lbs.
Maximum horsepower required: 60 hp	
Maximum oil flow: 34 gpm	

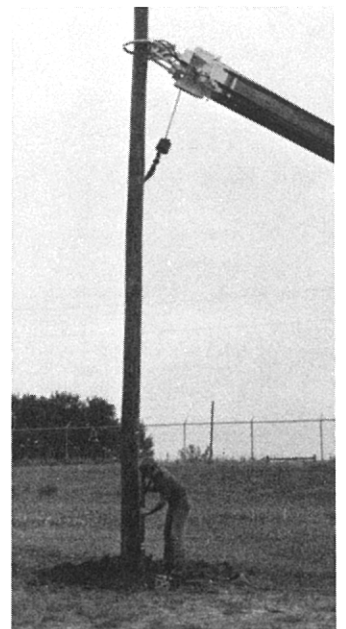


Hydraulic Tilting Pole Grab

This hydraulic tilting pole grab is the ideal companion accessory for your National self-stowing auger. It attaches to the end of the third boom section to steady poles and makes setting them faster and easier.

The pole grab will grip poles from 7 to 20 inches in diameter and tilts from 45° to 70° for precise placement. Tilt and grab functions are controlled by separate controls operating separate hydraulic cylinders. The unit pins easily and quickly in place. Comes complete with all controls, hoses, and carrying slider.

Model PG



NATIONAL SERIES 800 SPECIFICATIONS

General Construction:

Low-alloy, high-tensile, and other steel including T-1, Ex-Ten, Stressproof and Hi-Yield are combined with special low-hydrogen welding techniques wherever advantageous. Standard color: painted National Ivory.

Frame:

Box construction for maximum strength and rigidity. All rotation and bearing gearbox mounting surfaces machined after welding to ensure proper alignment for longer life.

Turret:

Fabricated rigid structure, well-braced for stability. Line-bored and machined after welding to ensure proper alignment.

Rotation:

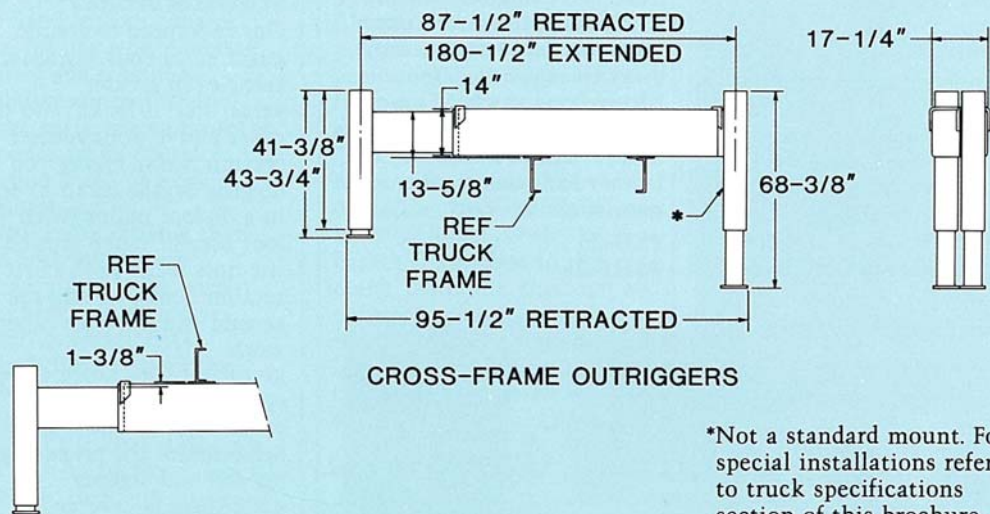
375° rotational force 220,000 inch/pounds. Turret rotation is by hydraulic orbit motor and planetary gearbox driving a pinion. The turret rotates on a ball-bearing race. Spring-applied-hydraulic release brake provides positive, no-drift lateral positioning.

Sub-base:

Unitized box construction designed to increase torsional stiffness and reduce truck frame strength requirements. Standard sub-base is designed to fit on standard 34-inch-wide truck frame and will accommodate an 18-foot stringerless bed. Attaches both to truck frame and crane frame. Total depth of sub-base is 10 inches.

Outriggers:

"A" frame box-type, 18-foot span (center of pad at ground level) move out and down, will not bind when raising or lowering truck. Can be positioned to 9 inches below ground level on 38-inch truck frame height.



Tilt:

Double-acting hydraulic cylinder raises and lowers boom; butt-mounted safety holding valve prevents boom falling in event of hose failure. Heavy duty, long-life pivot bearings.

Boom:

Boxed construction; telescopes hydraulically in sequence under rated load on nylon plates impregnated with molybdenum disulfide for smooth, long-life operation. Boom cylinder and valves are easily serviced. Heavy-duty, long-life pivot bearings.

Winch:

Hydraulic gear motor with planetary gear reduction, brake, and counterbalance valve for "power down" load lowering. 10,200-pound bare drum single-line pull available with 220 feet (280 feet on 875) of 9/16 inch, 14.875 ton breaking strength loadline. "Burst-of-Speed" control increases pay-out and pick-up of unloaded cable 60% over normal operating speed.

Pumps:

Two Vickers, high pressure, high-speed balanced-vane, replaceable cartridge-type providing 27 gpm to crane functions and 34 gpm to winch.

Cylinders:

Shaft packing: Polyurethane cup type. Shafts: HiYield stress relieved, chrome plated. Piston sets: Polyurethane u-cups with glass-reinforced nylon bearings. Cylinder barrels: Microhoned tubing and safety check valves.

Valves:

Four-way, spring-centered, spool type with low spool force and extra-fine metering notches. Independent relief valve protects hydraulic circuit against overload. Relief valves set at 2650 psi (2700 psi on winch system). Valves located for improved accessibility and easier service.

Hose:

All high-pressure hose is wire braid reinforced, having a minimum safety factor of 4 to 1.

Operating Speeds:

Winch 3rd wrap: 150 fpm. Boom up or down: 22-26 seconds. Boom out: 22 feet to 56 feet, 70 seconds. Boom in: 56 feet to 22 feet, 62 seconds. Turn: 32-40 seconds. When using remote control, crane function speeds will be reduced by 40% to assure smooth operation. (Speeds above assume no load with 27 gpm oil flow on boom and 34 gpm on winch.)

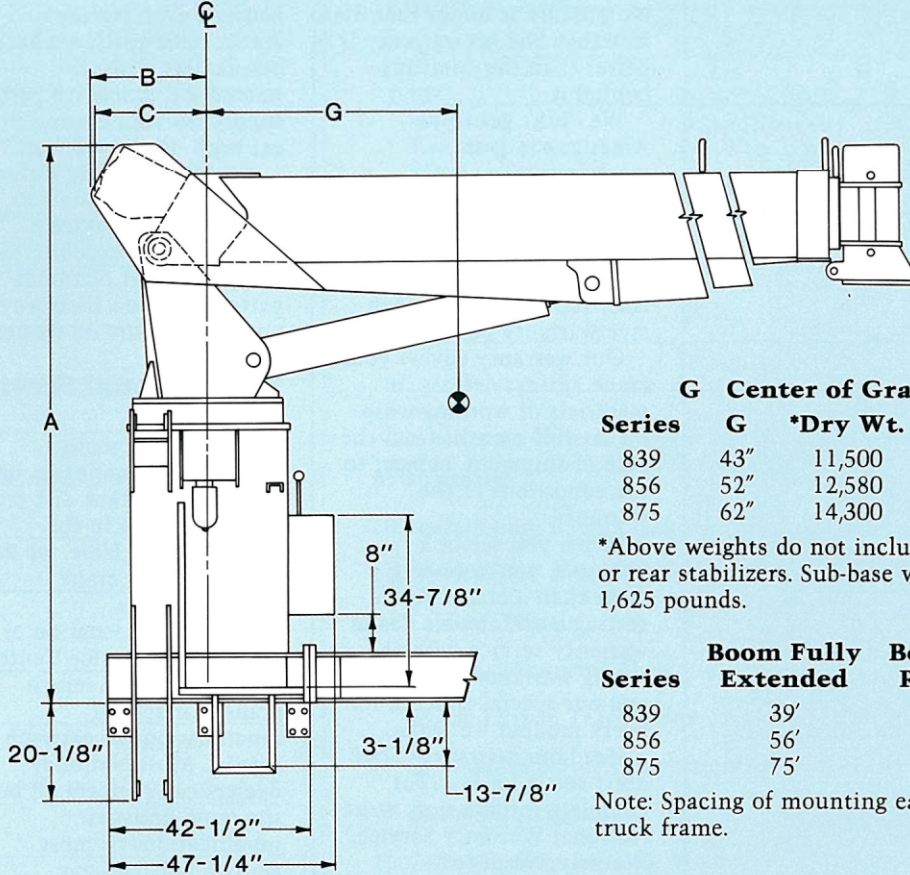
Oil Tank Capacities:

60 gallon supply tank with breather, clean-out, suction strainers and removable magnetic plug.

Capacity Alert Systems:

Devices available to reduce possibility of operator error. See your dealer.

ROTATION
⌀



Boom	A	B	C
839	115 3/4"	24 5/8"	23 1/4"
856	115 3/4"	24 5/8"	23 1/4"
875	113 3/4"	25 3/4"	24 3/8"
†875A	115 3/4"	24 5/8"	23 1/4"

†This boom is required when Model 875 is equipped with hydraulic auger.

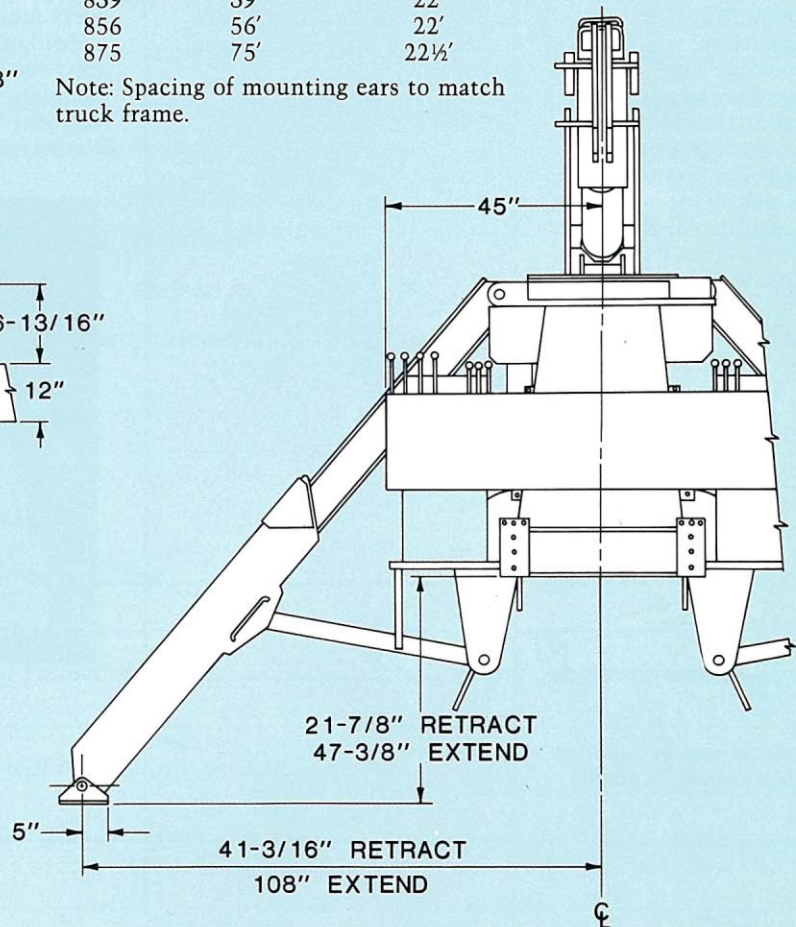
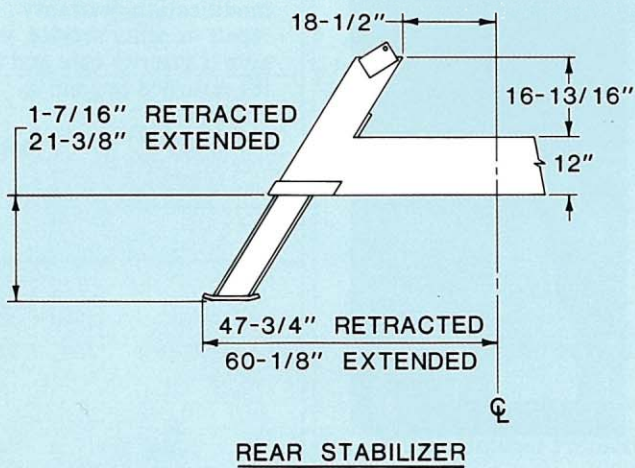
G Center of Gravity

Series	G	*Dry Wt.	*W/Oil Wt.
839	43"	11,500	12,000
856	52"	12,580	13,100
875	62"	14,300	14,800

*Above weights do not include sub-base or rear stabilizers. Sub-base weight: 1,625 pounds.

Series	Boom Fully Extended	Boom Fully Retracted
839	39'	22'
856	56'	22'
875	75'	22 1/2'

Note: Spacing of mounting ears to match truck frame.



NATIONAL SERIES 800 BOOM RESTS

NATIONAL WARRANTY/PARTS/SERVICE

Cranes are tough when they're in use, but they can be severely damaged during travel from job to job.

A sensible way to protect your crane from inadvertent damage is a strong, solid, boom rest.

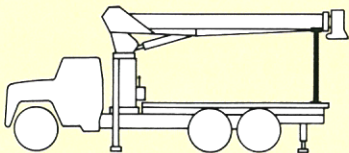
Boom Rests:

- Add years to the life of your crane
- Reduce stress on the crane frame
- Protect rotation gear from transit damage
- Remove stress from truck frame
- Spread crane load more evenly
- Reduce maintenance and downtime.

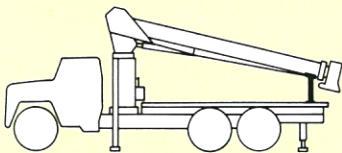
In addition, boom rests offer you a safe, positive way to immobilize your crane for transit.

We offer two heavy-duty boom rests to protect your crane. There's a quality National boom rest to fit your mounting configuration.

So protect your investment and add extra, reduced maintenance years to the life of your crane with a boom rest tailored to your truck/crane combination. All factory-mounted cranes will be supplied with boom rests.



Horizontal rear bed mount for greater load space.



Low-profile rear bed mount for lower center of gravity.

The National Warranty

No product is better than its warranty and no warranty is better than the company behind it.

We didn't get to be America's largest manufacturer of truck-mounted telescoping and articulating cranes by building less than the best. Or backing them with less than the most comprehensive warranty possible.

Our warranty covers your crane against defects in materials or workmanship for six full months from the date of shipment, subject to the conditions of the warranty.

When you select a National, you're getting more than a crane. You're getting a nationwide dealer warranty service network, strong warranty protection and our special concern for every product we make.

Read our warranty. Then, don't settle for less. For complete information, write National Warranty Service, Waverly, NE 68462.



The National Parts System

Because even National cranes need parts, we back our dealers with an immediate, extensive parts supply. So your crane can get back on the job fast.

We have a highly trained parts and service staff to answer dealer service questions and expedite parts shipping. Most National parts will be on their way within 48 hours on request.

The National Service Center

Just west of Lincoln, Nebraska, we maintain one of the finest crane and truck service centers in the United States. Here, we do all our factory crane mounting.

The central location of our Lincoln Service Center makes it easy to return cranes for special modifications or extreme repairs. Most National dealers can perform all but the most unusual modifications or most serious repairs.

Should you need to return your crane to us for modification, warranty repair or other service, we give it priority care and see it's returned as soon as possible.

NATIONAL SERIES 800 PROPOSAL

	Description	Price
Date: _____	1. Series _____	\$ _____
Prepared for: _____	2. Boom _____	_____
_____	3. Jib _____	_____
_____	4. Rear Stabilizers _____	_____
Submitted by: _____	5. Front Stabilizers <input type="checkbox"/> Std. <input type="checkbox"/> Tilt _____	_____
_____	6. Line Block <input type="checkbox"/> 2 Part <input type="checkbox"/> 2 & 3 Part <input type="checkbox"/> 2, 3, & 4 Part _____	_____
_____	Accessories	
_____	7. _____	_____
Submitted by: _____	8. _____	_____
_____	9. _____	_____
_____	Mounting:	
(Firm Name) _____	10. Installation: Behind Cab _____	_____
_____	11. Installation: Rear Mounting (add to installation charge above)	_____
(Address) _____	<input type="checkbox"/> Air Throttle _____	_____
_____	<input type="checkbox"/> Rear Mounting Group _____	_____
(City & State) _____	<input type="checkbox"/> Hi-Tensile Torsion Box _____	_____
_____	<input type="checkbox"/> Reverse Frame Conversion Kit _____	_____
(Zip) _____	<input type="checkbox"/> HO Outriggers _____	_____
(Phone) _____	12. Frame reinforcing <input type="checkbox"/> Weld _____	_____
Signed: _____	<input type="checkbox"/> Bolt-Extra _____	_____
_____	13. Platform Body ____ ft. <input type="checkbox"/> Wood _____	_____
_____	<input type="checkbox"/> Steel _____	_____
_____	14. 1,100 lbs. front bumper (if required) _____	_____
_____	15. Weight in bed _____	_____
_____	16. Boom rest <input type="checkbox"/> Parallel _____	_____
_____	<input type="checkbox"/> Low _____	_____
_____	<input type="checkbox"/> Other _____	_____
_____	17. Mount Stabilizers _____	_____
_____	18. Chassis _____	_____
_____	19. Rear Bumper Protection _____	_____
_____	20. Freight _____	_____
	This quotation will remain firm for _____ days.	_____
	Accepted by: _____	\$ _____
	(Name)	TOTAL PRICE
	_____	_____
	(Firm Name)	(Date)

NATIONAL'S 875 OFFERS THE COMMERCIAL TRUCK INDUSTRY'S FIRST FULLY HYDRAULIC 4-SECTION BOOM



NATIONAL CRANE

Subsidiary of Kidde, Inc.
KIDDE

General Offices

11200 North 148th Street/Waverly, NE 68462/402/786-2240

Service Center

701 N.W. 27th Street/Lincoln, NE 68528/402/474-2666

Your National Dealer:

National reserves the right to change designs, prices and specifications at any time without notice.