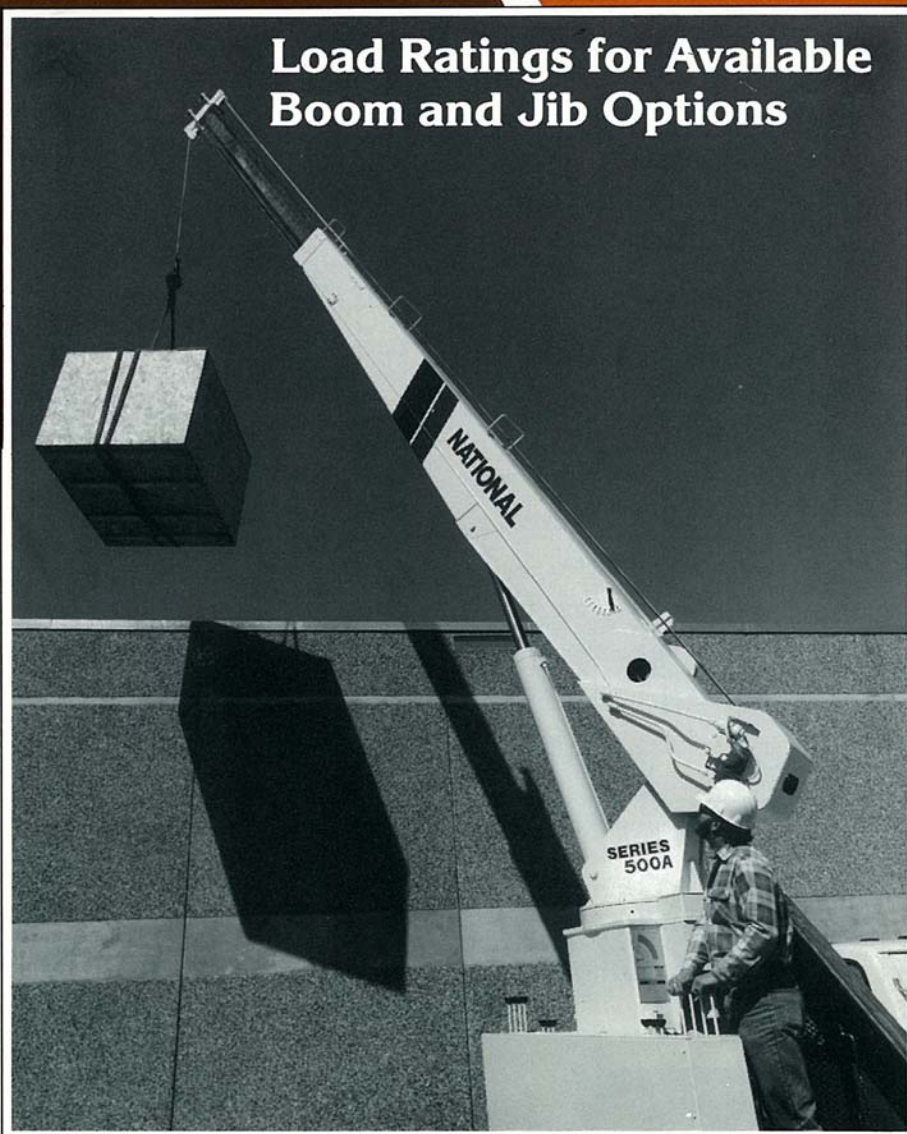


# NATIONAL SERIES 500A

Telescoping Cranes

Load Ratings for Available  
Boom and Jib Options



# NATIONAL SERIES 500A

## Load Ratings for Available Boom and Jib Options

The capacities shown will be reduced when accessories are attached to the boom or loadline.

### Boom and Jib Combinations

#### Telescoping Booms

- Model 538A .... 15-foot 8-inch- to 38-foot... 3-section
- Model 547A .... 18-foot 8-inch- to 47-foot... 3-section
- Model 556A .... 21-foot 8-inch- to 56-foot... 3-section

#### Jib Options (Side-Fold for Stowing)

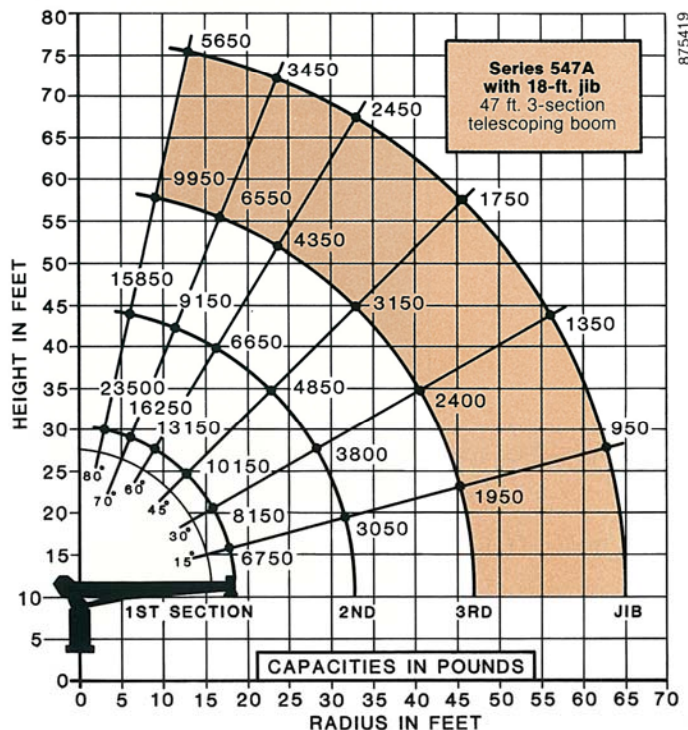
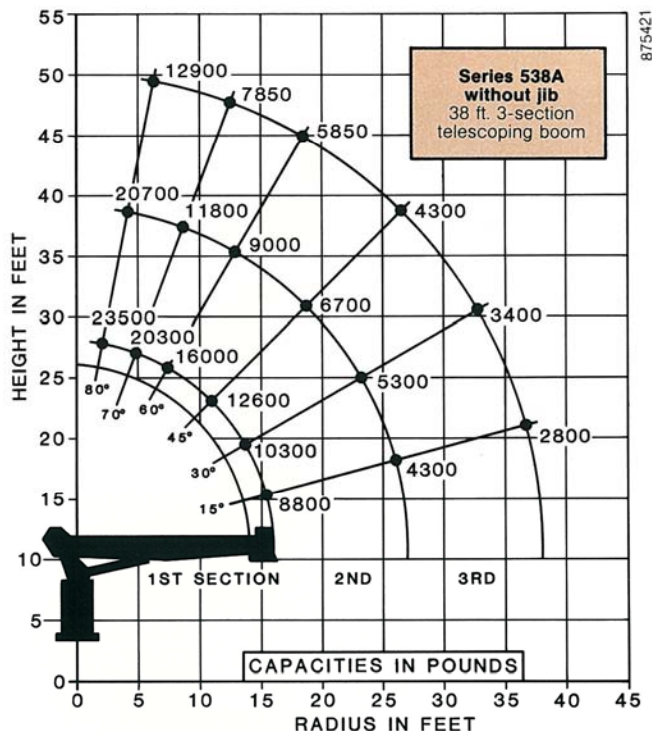
- Model 5FJ15: 15-foot straight (for Model 538A)
- Model 5FJ18: 18-foot straight (for Model 547A)
- Model 5FJ21: 21-foot straight (for Model 556A)
- Model 5FJ29M: 18-foot to 29-foot, manual pull-out (for Model 547A)
- Model 5FJ35M: 21-foot to 35-foot, manual pull-out (for Model 556A)

National Series 500A Winch Data			1 Part Line	2 Part Line	3 Part Line
<b>Caution:</b> <ul style="list-style-type: none"> <li>• Do not deadhead lineblock against boom tip when extending boom.</li> <li>• Keep at least three wraps of load line on drum at all times.</li> <li>• Use only the specified cable on this machine.</li> </ul>					
Winch	Cable Supplied	Average Breaking Strength	Lift and Speed	Lift and Speed	Lift and Speed
Standard Planetary Winch	5/16" diam. 8 x 19 or 8 x 25 IWRC	29,400 lbs.	8,400 lbs. 150 fpm	16,800 lbs. 75 fpm	23,500 lbs. 50 fpm
With Optional Burst-of-Speed Feature*	5/16" diam. 8 x 19 or 8 x 25 IWRC	29,400 lbs.	3,000 lbs. 240 fpm	6,000 lbs. 120 fpm	9,000 lbs. 80 fpm

All winch pulls and speeds are shown on the third layer. Winch pulls would increase on the first and second layers. Winch line speeds would decrease on the first and second layers. Winch line pulls may be limited by the winch capacity or the OSHA 3.5 to 1 cable safety factor. These are shown below:

Winch	Bare Drum Pull	Allowable Cable Pull
Standard Planetary.....	10,200 pounds .....	8,400 pounds

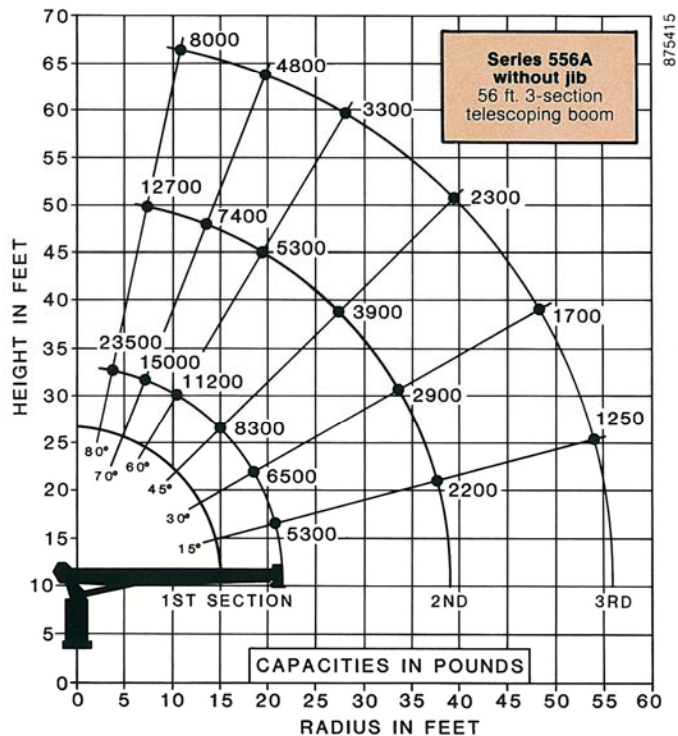
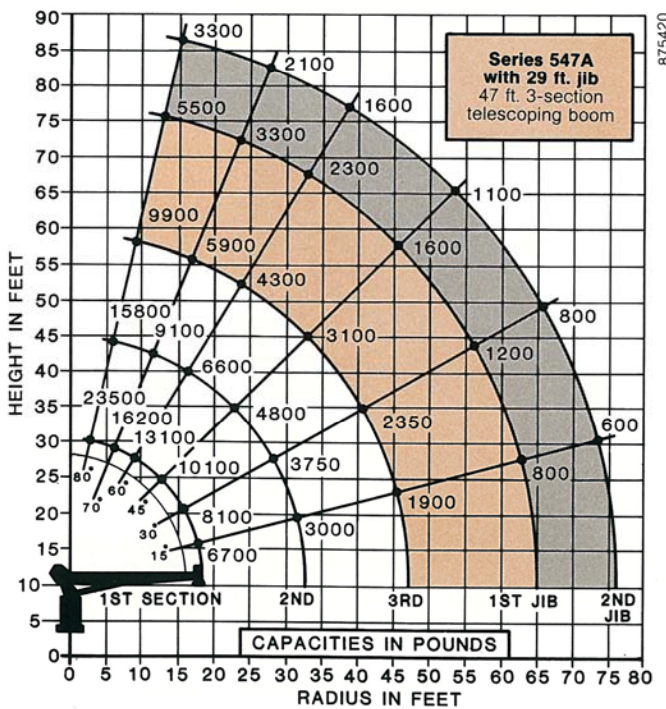
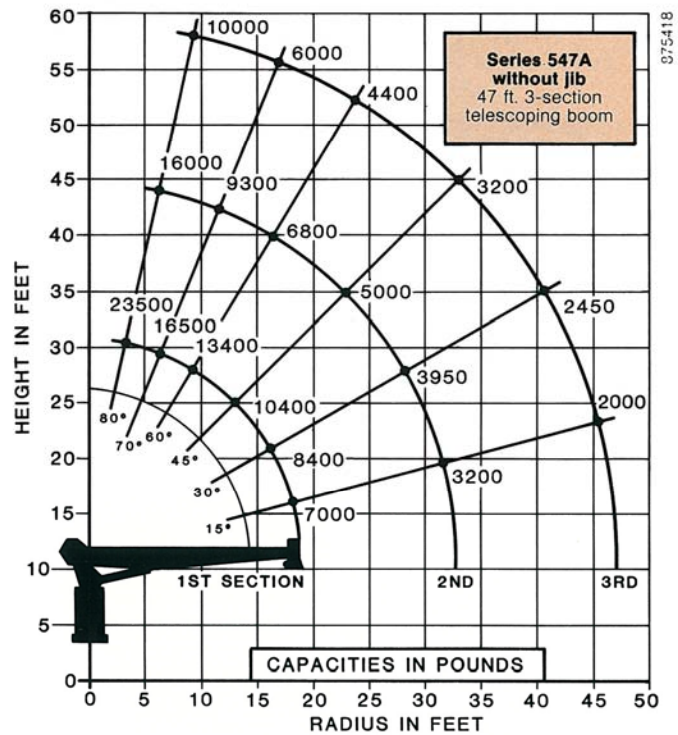
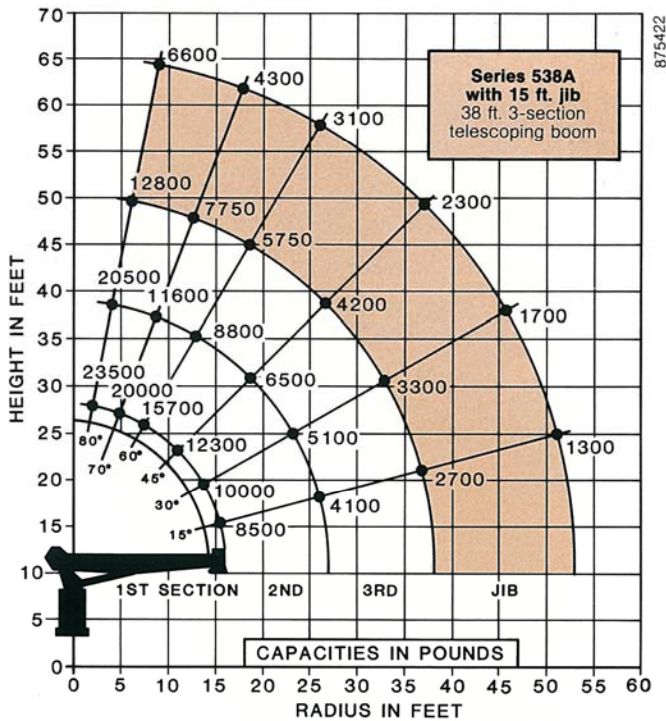
\*Ratings are based on intermittent use. High cycle applications may require optional oil cooler.

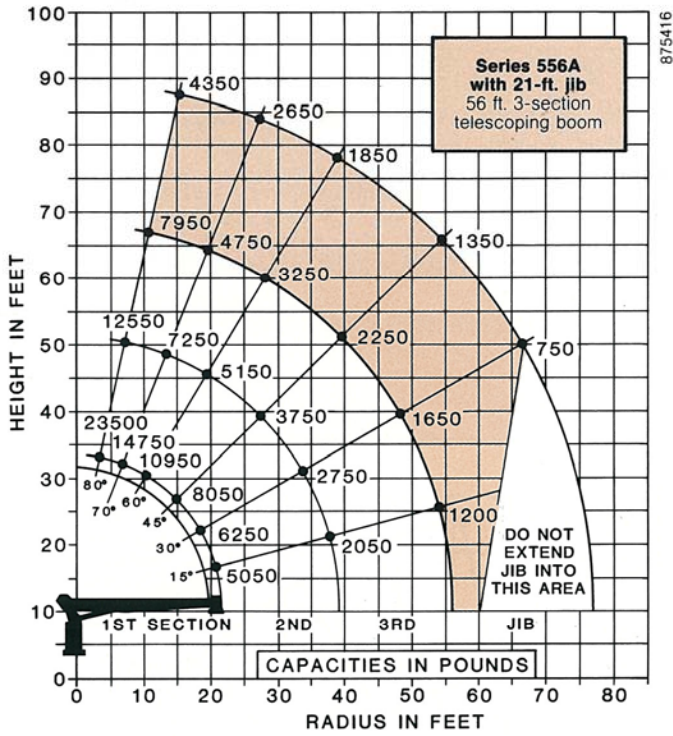


# Important Information and Cautions

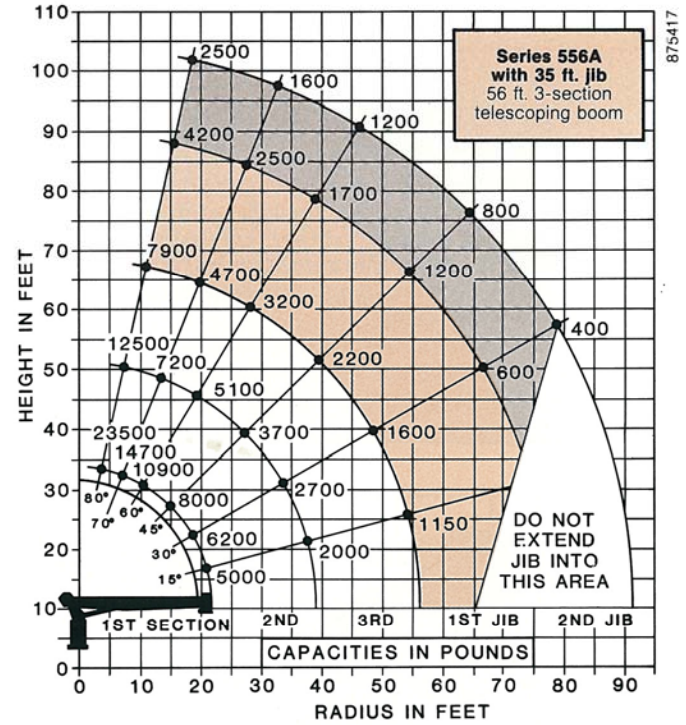
**Do not operate cranes or accessories within 10 feet (3m) of live power lines.**

1. Load ratings shown on these charts are maximum allowable loads with the outriggers properly extended on a firm, level surface and the crane leveled and mounted on a factory-recommended truck.
2. Always level the crane with the level indicator located on the crane frame.
3. The operator must reduce loads to allow for factors such as wind, ground conditions, operating speeds and the effect of freely suspended loads.
4. Overloading this crane may cause structural collapse or instability.
5. Weights of any accessories attached to the boom or loadline must be deducted from the load chart capacities.
6. Do not exceed jib capacities at any reduced boom lengths.





875416



875417



**General Offices**  
11200 North 148th Street/Waverly, NE 68462/402/786-2240  
Telex: 438061  
**Service Center**  
701 N.W. 27th Street/Lincoln, NE 68528/402/474-2666

National reserves the right to change designs, prices, and specifications at any time without notice.