

NATIONAL SERIES 400 TELESCOPING CRANES



**Load Ratings for Available
Boom and Jib Options**

Boom and Jib Combinations

Telescoping Booms

- Model 426: 15½- to 26-foot two section
- Model 428: 12½- to 28-foot three section
- Model 437: 15½- to 37-foot three section
- Model 446: 18½- to 46-foot three section
- Model 455: 21½- to 55-foot three section

Jib Options (side stowing)

- Model 4FJ12: 12-foot straight (for Model 428)
- Model 4FJ15: 15-foot straight (for Models 426, 437)
- Model 4FJ18: 18-foot straight (for Models 446, 455)
- Model 4FJ29: 18- to 29-foot manual pull-out (for Models 446, 455)

The capacities shown will be reduced when accessories are attached to the boom or loadline.

NATIONAL SERIES 400 WINCH DATA		1 Part Line	2 Part Line	3 Part Line	
Caution: <ul style="list-style-type: none"> • Do not deadhead lineblock against boom tip when extending boom. • Keep at least three wraps of load line on drum at all times. • Use only the specified cable on this machine. 					
Winch	Cable Supplied	Average Breaking Strength	Lift and Speed	Lift and Speed	Lift and Speed
Standard Planetary Winch	Standard ½" diam. rotation resistant	27,500 lbs.	5,500 lbs. 184 fpm	11,000 lbs. 92 fpm	16,000 lbs. 61 fpm
	Optional ½" diam. 6 x 19 or 6 x 25 IWRC	23,000 lbs.	5,500 lbs. 184 fpm	11,000 lbs. 92 fpm	16,000 lbs. 61 fpm
Optional High-pull Planetary Winch	Standard 9/16" diam. rotation resistant	35,000 lbs.	7,000 lbs. 110 fpm	14,000 lbs. 55 fpm	16,000 lbs. 37 fpm
	Optional 9/16" diam. 6 x 19 or 6 x 25 IWRC	29,750 lbs.	8,400 lbs. 110 fpm	16,000 lbs. 55 fpm	—

All winch pulls and speeds are shown on the third layer. Winch pulls would increase on the first and second layers. Winch line speeds would decrease on the first and second layers. Winch pulls may be limited by the winch capacity or the cable safety factor. These are shown below:

Winch	Bare Drum	Full Drum Winch Pull	Cable Limited
Standard Planetary	6,450 lbs.	5,500 lbs.	5,500 lbs.
(With Optional Cable) . . .	6,450 lbs.	5,500 lbs.	6,630 lbs.
Optional Planetary	10,200 lbs.	8,400 lbs.	7,000 lbs.
(With Optional Cable) . . .	10,200 lbs.	8,400 lbs.	8,400 lbs.

Important Information and Cautions

Do not operate cranes or accessories within 10 feet of live power lines.

1. Load ratings shown on these charts are maximum allowable loads with the outriggers properly extended on a firm, level surface and the crane leveled and mounted in a factory-recommended configuration.

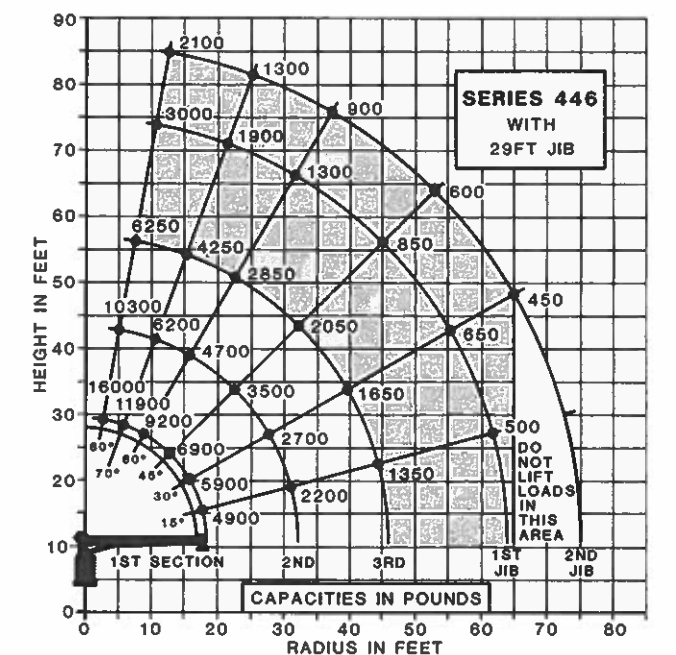
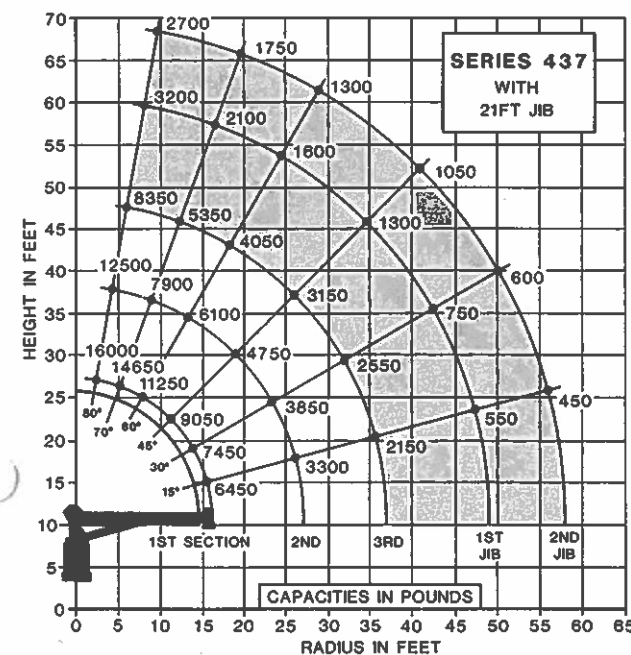
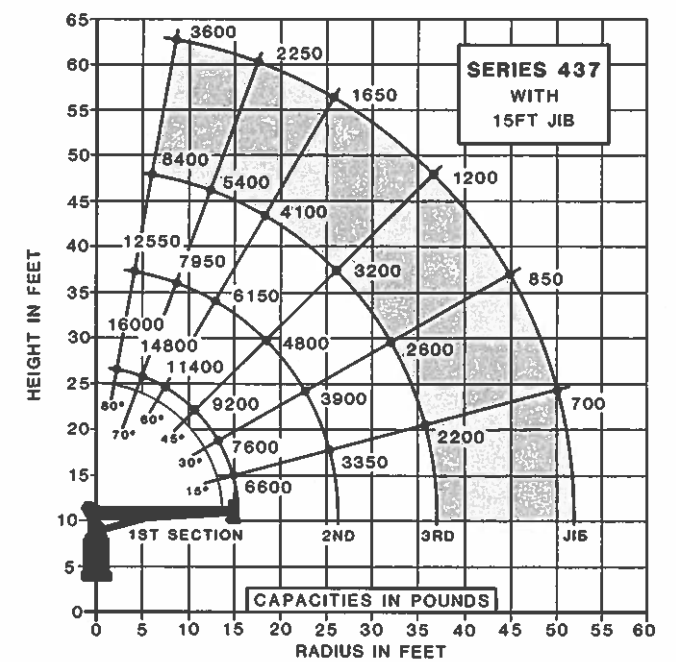
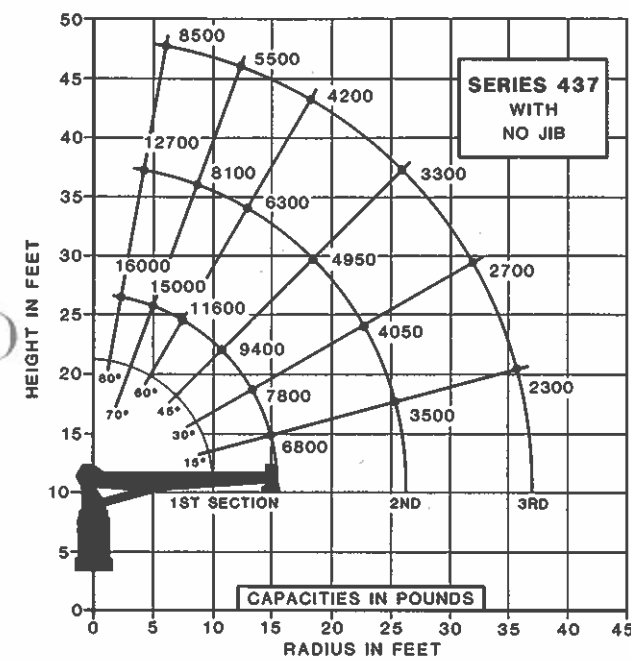
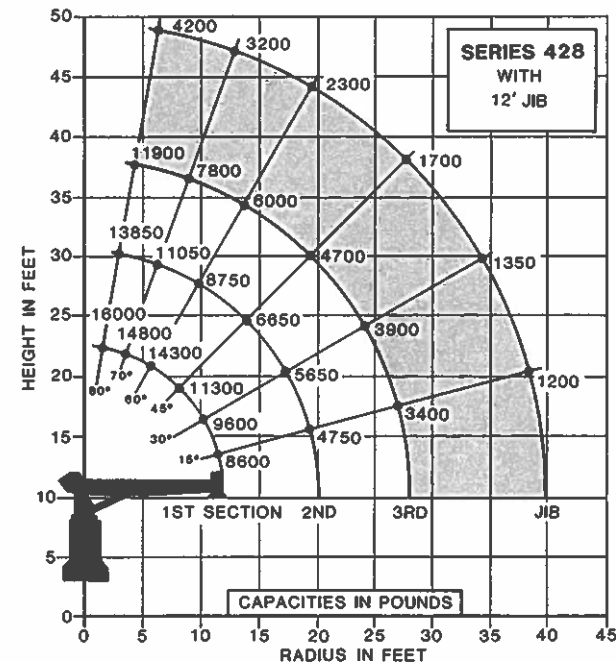
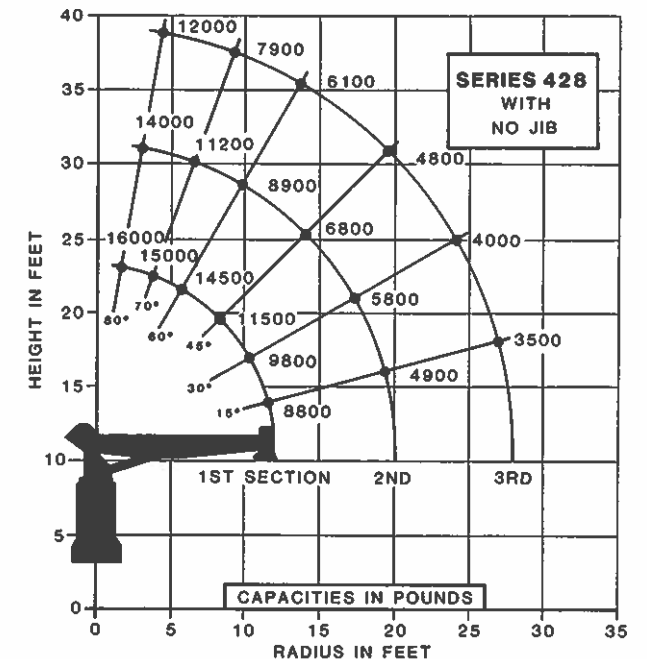
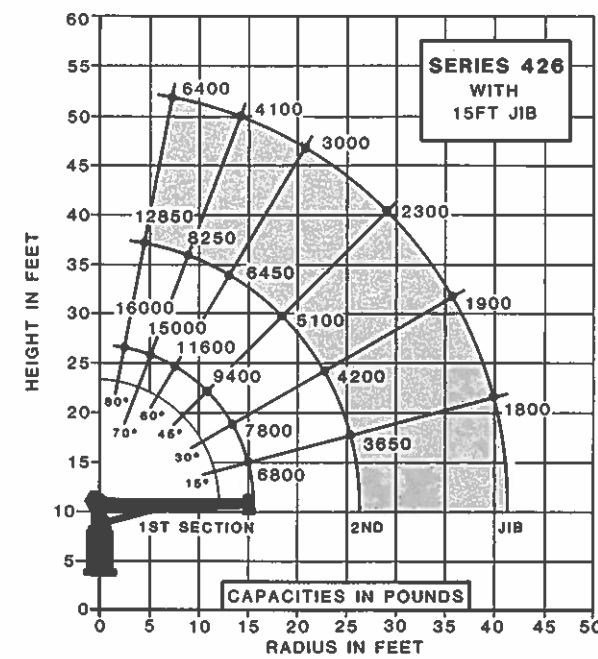
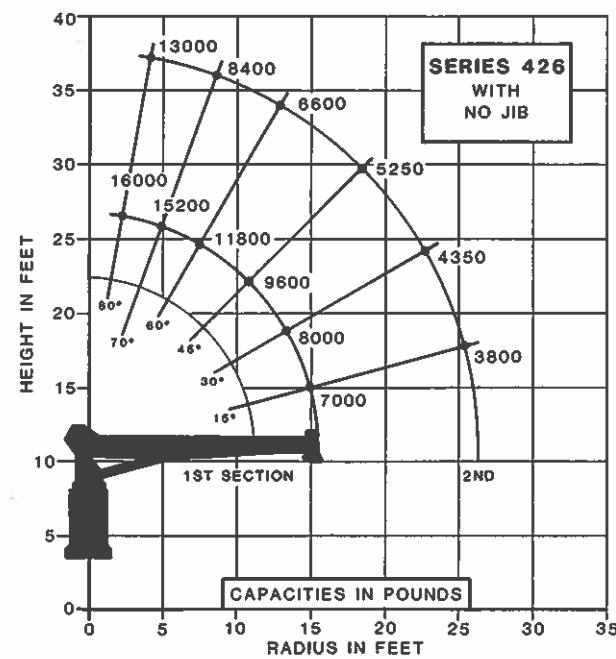
2. Always level the crane with the level indicator located on the crane frame.

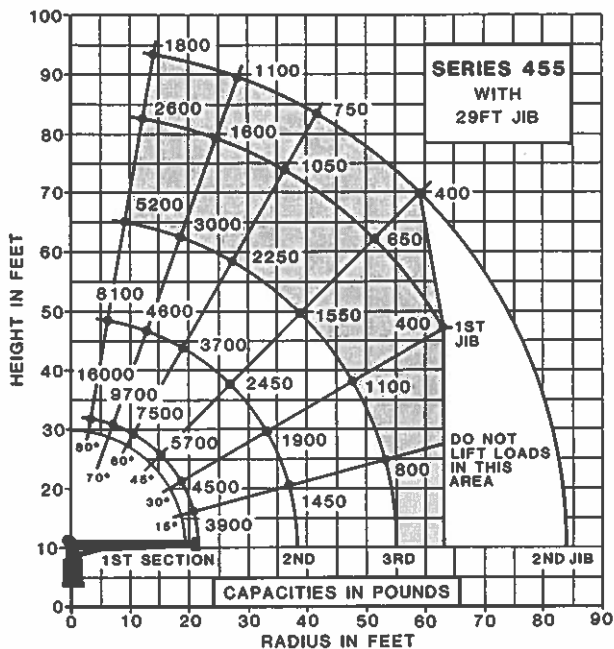
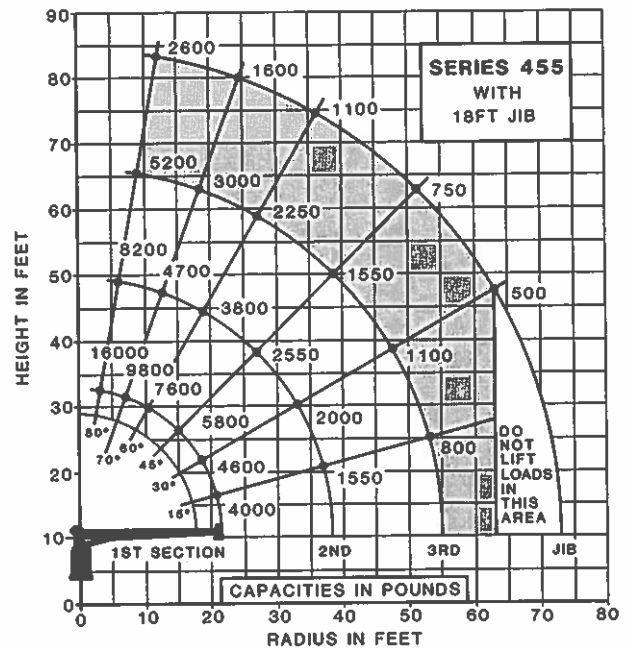
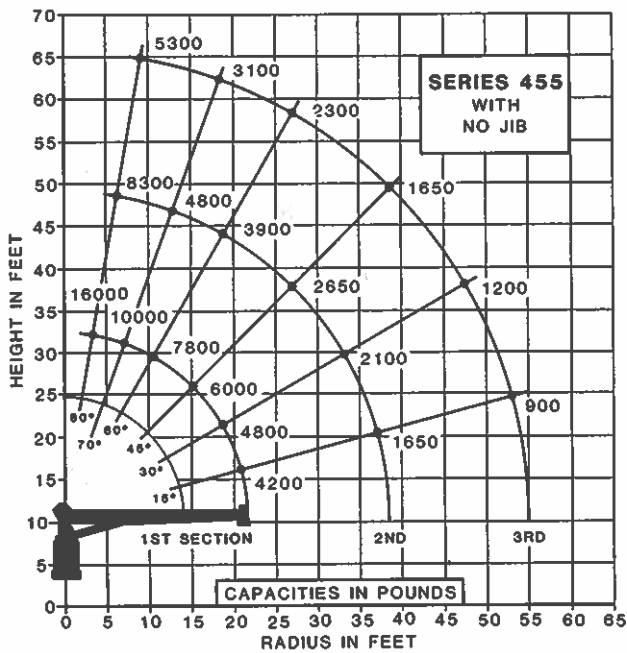
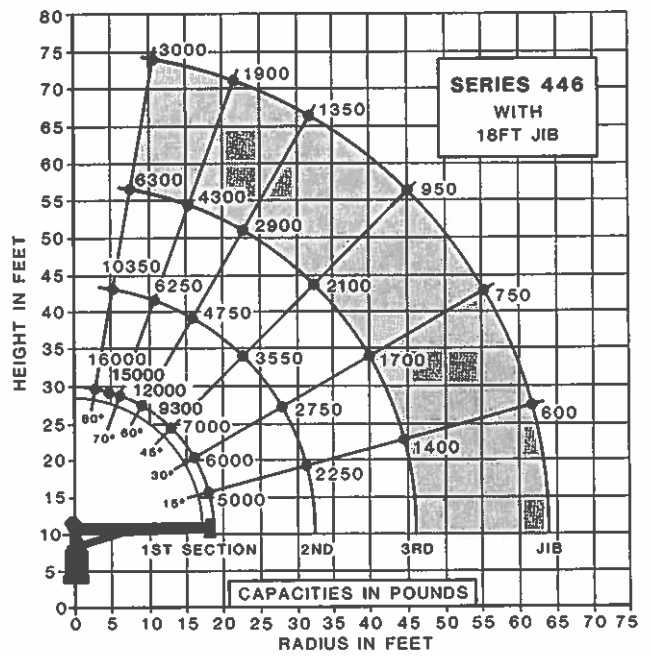
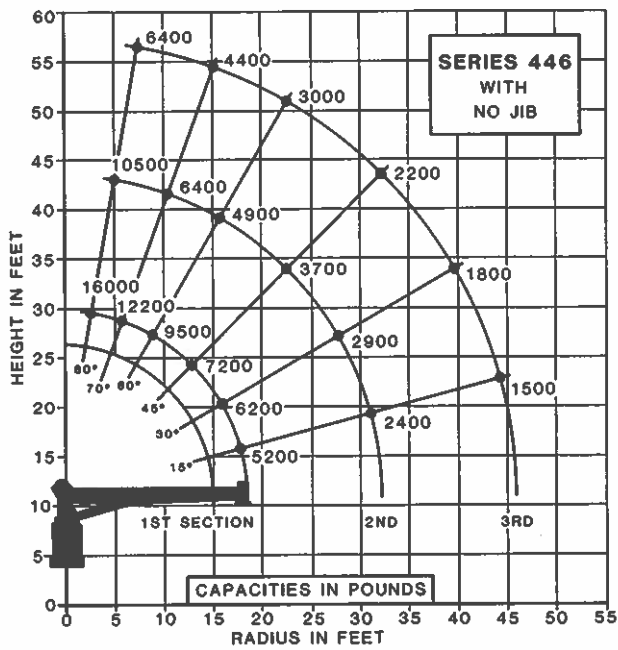
3. The operator must reduce loads to allow for factors such as wind, ground conditions, operating speeds and the effect of freely suspended loads.

4. Overloading the crane may cause structural collapse or instability.

5. Weights of any accessories attached to the boom or loadline must be deducted from the load chart capacities.

6. Do not exceed jib capacities at any reduced boom length.





NATIONAL CRANE

Subsidiary of Kidde, Inc.

KIDDE®

General Offices:

11200 North 148th Street • Waverly, NE 68462

(402) 786-2240

Telex: 438061

National reserves the right to change designs, prices and specifications at any time without notice.