

Krupp Hydraulic Truck-mounted Crane
350 GMT
450 ton Capacity



Superstructure Specifications

Boom

55 ft – 171 ft 4-section boom,
1 base + 3 power sections
(with remote lock-out system)

Telescoping cycle:

1. section 130 sec.

2. + 3. section 190 sec.

High speed:

1. section 75 sec.

2. + 3. section 105 sec.

*) Jibs

40 – 118 ft lattice extension
and inserts (for straight or
20° off-set use)

53 – 210 ft power luffing jib

Main Hoist

Axial piston motor with planetary gear
and fail-safe brake

Single line pull max.: 27560 lbs

Single line speed max.: 525 ft/min

Drum diameter: 22"

Rope diameter: 1"

Rope length: 1480 ft

*) Auxiliary Hoist

Data identical with main hoist

Hook Blocks

145 ton

*) 265, 90, 35 ton

Boom Elevation

Dual hydraulic cylinders with integral
holding valve, boom angle

from -1.5 to +82.0 degrees

Elevation cycle: 130 sec.

Swing Gear

2 axial piston motors with planetary
gear, holding and service brake,
swing speed 0 – 1 rpm variable

Engine

6 cyl. Daimler Benz OM 407 A,
water-cooled, 270 hp at 2000 rpm

Tank capacity: 80-gal. diesel

Hydraulic system

3 separate circuits: 2 axial piston pumps
with integrated infinitely variable speed
and load control,

1 4 section axial piston pump. Oil cooler.

Tank capacity: 800 gal. hydraulic oil

Control system

Infinite variation of all crane motions by
hydraulic pilot circuit, dead-man
position

Counterweight

132,280 lbs, in 4 sections, hydraulically
removable

Operator's cab

Full vision, aluminium, safety glass, fully
adjustable operator's seat with

hydraulic suspension, diesel engine
coolant heaters and ventilation system,
optional stationary heaters, complete
engine instrumentation and crane
operating controls

Safety installations

Hoist limit switch, lock valves, pressure
relief valves.

Hoist drum rotation indicator.

*) Electronic load moment safety device
with automatic cut-out and indicators
for load moment and working radius,
lowering limit switch

Carrier Specifications

Chassis

Krupp heavy-duty 8-axle carrier welded
box-type frame from high-tensile steel

Engine

12 cyl. Daimler Benz OM 424 A,
water-cooled, 530 hp at 2300 rpm

Tank capacity: 160 gal.

Transmission

Allison 5-speed automatic gear-box
MAN transfer case, 2 speed with
differential lock

Axles

| | |
|--|------------------|
| 1. steering axle | 5. driven axle |
| 2. driven | 6. driven |
| steering axle | steering axle |
| 3. steering axle | 7. steering axle |
| 4. driven axle | 8. steering axle |
| driven axles = planetary axles | |
| 4. + 5. axle with interaxle differential lock | |

Suspension

1. – 8. axle hydropneumatic suspension
system and axle lock-outs

Tyres

16 tyres 14.00 – 24 PR 22

Steering

ZF semi-integral ball-nut hydraulic
power steering

Brakes

Service brake:
pneumatic dual-circuit acting on all
wheels

Permanent brake:
retarder of Allison automatic
transmission

Auxiliary brake:
pneumatically operated spring-loaded
brake, acting on 2nd, 3rd, 6th, 7th and
8th axle

Driver's cab

Aluminium, three-man-design with bunk,
safety glass, adjustable hydraulically
suspended seats, diesel engine coolant
heaters and ventilation system,
optional stationary heaters and
driving controls

Outriggers

Independent horizontal and vertical
hydraulic motion of each beam.

Controls on each side of chassis.

Sight level device.

Electrical equipment

Three-phase alternator 28 V/55 A

2 batteries 12 V/170 Ah

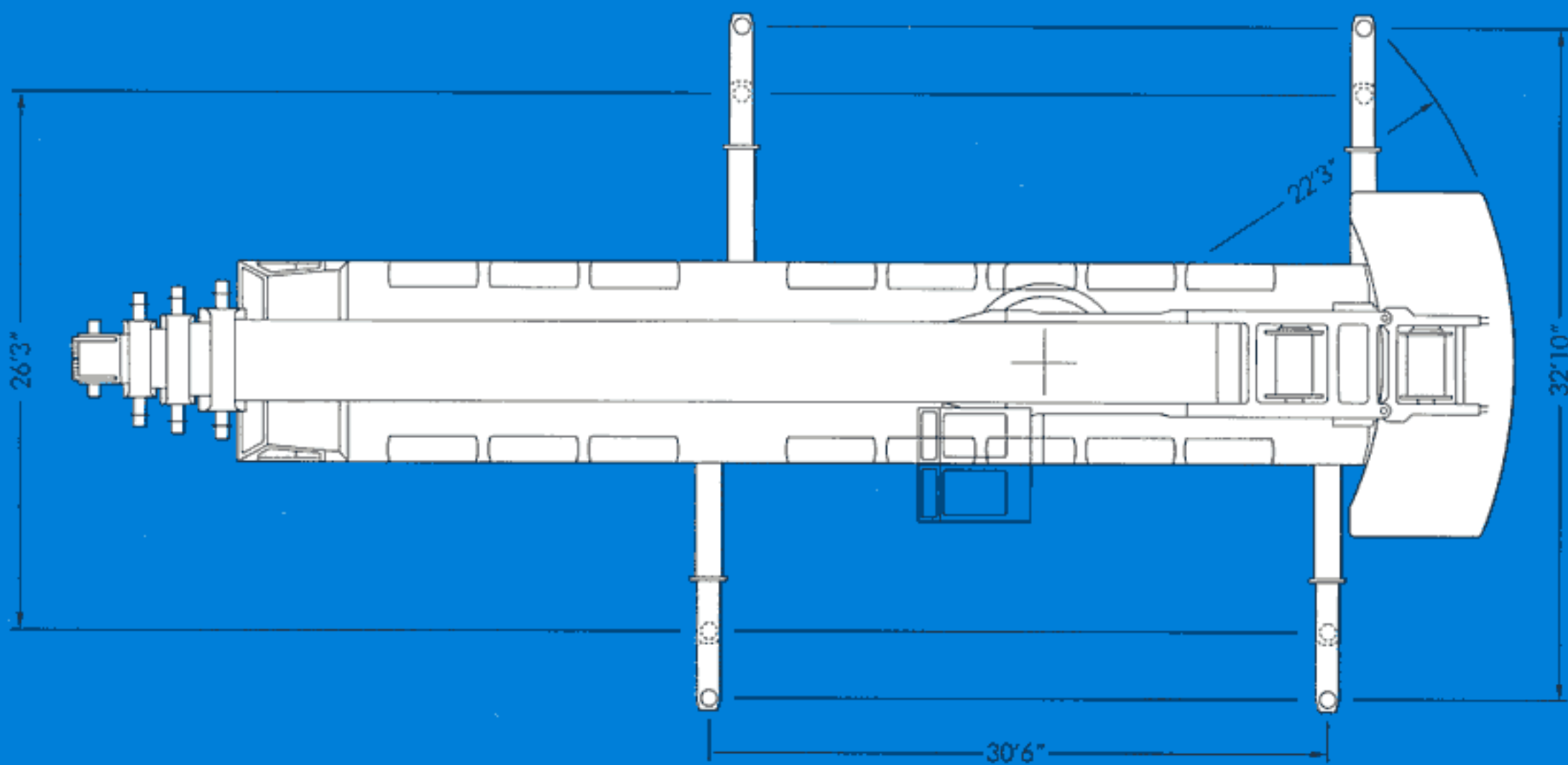
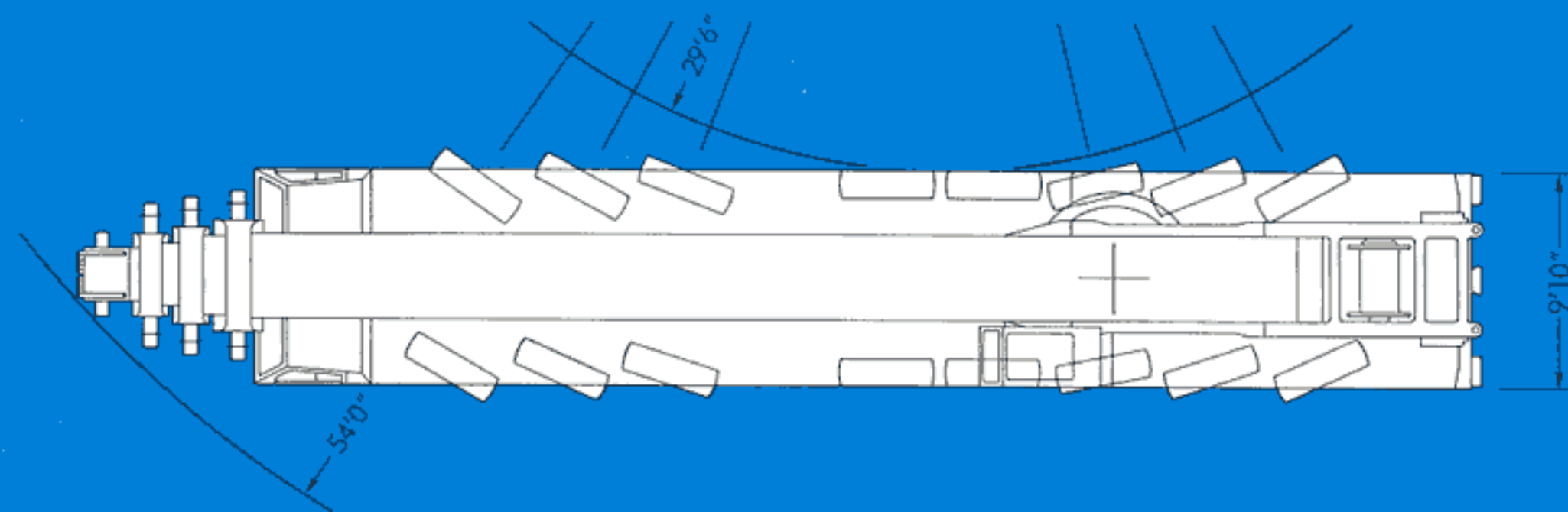
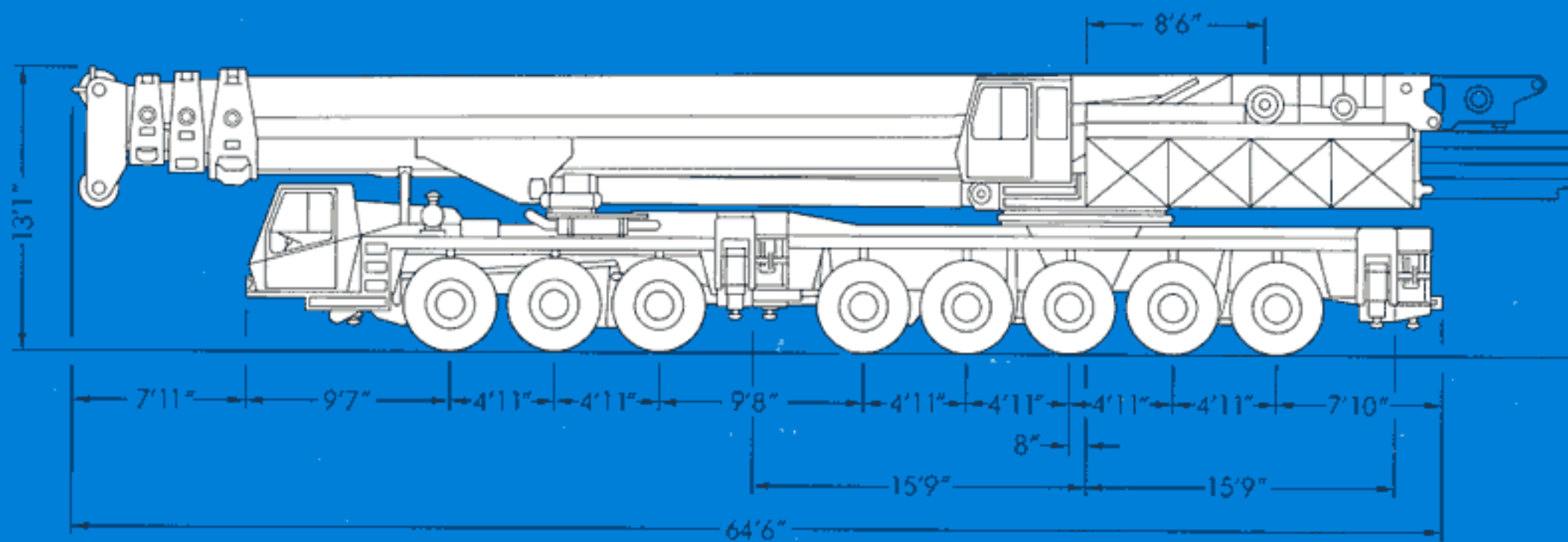
Performance

Travelling speeds: max. 42 mph
min. 0.1 mph

Gradeability: 32%

Turning radius: 54 ft

*) Optional items



Lifting capacities in 1000 lbs on outriggers

360° Main boom

Counterweight 132.280 lbs

Counterweight 66.140 lbs

| Radius (ft) | Boom length (ft) | | | | | |
|----------------|------------------|----------|-------|-------|--------|--------|
| | 55'0" * | 55'0" | 55'0" | 94'0" | 131'0" | 171'0" |
| 10 | 900.0*) | 721.6 | 584.1 | | | |
| 15 | 600.2 | 571.5 | 463.2 | 360.9 | | |
| 20 | 454.4 | 454.4 | 382.0 | 306.1 | | |
| 25 | 364.5 | 364.5 | 324.2 | 268.5 | 185.8 | |
| 30 | 299.1 | 294.4 | 277.7 | 235.8 | 165.9 | 99.2 |
| 35 | 249.8 | 224.0 | 235.1 | 210.8 | 149.1 | 99.2 |
| 40 | 209.6 | 178.3 | 199.0 | 191.0 | 133.8 | 99.2 |
| 45 | | | | 165.9 | 121.2 | 96.0 |
| 50 | | | | 142.3 | 110.8 | 89.5 |
| 55 | | | | 124.7 | 101.6 | 84.1 |
| 60 | | | | 109.9 | 93.6 | 78.5 |
| 65 | | | | 96.4 | 87.8 | 74.3 |
| 70 | | | | 84.4 | 81.1 | 69.4 |
| 75 | | | | 73.6 | 74.8 | 64.8 |
| 80 | | | | | 68.4 | 60.6 |
| 85 | | | | | 61.0 | 56.4 |
| 90 | | | | | 55.4 | 53.0 |
| 95 | | | | | 49.8 | 50.2 |
| 100 | | | | | 44.6 | 47.4 |
| 105 | | | | | 40.1 | 44.0 |
| 110 | | | | | 36.2 | 41.0 |
| 115 | | | | | | 37.8 |
| 120 | | | | | | 34.7 |
| 125 | | | | | | 32.0 |
| 130 | | | | | | 29.1 |
| 135 | | | | | | 26.7 |
| 140 | | | | | | 24.6 |
| 145 | | | | | | 22.7 |
| 150 | B | B | | | | 20.8 |

| Radius (ft) | Boom length (ft) | | | | |
|----------------|------------------|-------|-------|--------|--------|
| | 55'0" | 55'0" | 94'0" | 131'0" | 171'0" |
| 10 | 630.7 | 507.8 | | | |
| 15 | 485.6 | 404.0 | 328.1 | | |
| 20 | 366.8 | 331.2 | 279.8 | | |
| 25 | 269.3 | 269.4 | 245.6 | 168.8 | |
| 30 | 182.3 | 216.6 | 210.0 | 150.6 | 99.2 |
| 35 | 134.4 | 177.8 | 172.6 | 135.5 | 98.4 |
| 40 | 103.2 | 143.9 | 137.7 | 121.9 | 93.9 |
| 45 | | | 110.8 | 109.2 | 87.2 |
| 50 | | | 89.9 | 90.2 | 81.8 |
| 55 | | | 74.8 | 76.4 | 76.0 |
| 60 | | | 62.0 | 64.3 | 68.7 |
| 65 | | | 51.9 | 54.7 | 59.3 |
| 70 | | | 44.2 | 47.2 | 51.7 |
| 75 | | | 37.5 | 40.7 | 45.2 |
| 80 | | | | 35.1 | 39.8 |
| 85 | | | | 30.2 | 35.1 |
| 90 | | | | 26.1 | 31.2 |
| 95 | | | | 22.6 | 27.6 |
| 100 | | | | 19.6 | 24.4 |
| 105 | | | | 16.7 | 21.6 |
| 110 | | | | 14.2 | 19.0 |
| 115 | | | | | 16.7 |
| 120 | | | | | 14.7 |
| 125 | | | | | 12.8 |
| 130 | | | | | 11.2 |
| 135 | | | | | |
| 140 | | | | | |
| 145 | | | | | |
| 150 | B | | | | |

Notes for lifting capacities

Rated loads do not exceed 85% of tipping load with the machine properly levelled on firm ground.

360° duties – on outriggers fully extended, other than noted above (coloured lifting range).

Note counterweight required as listed in relevant lifting capacity columns.

For safe crane operation due allowance must be made to compensate for high winds, side load, pendulum action and other hazardous conditions. No side pull permitted.

Hook blocks, slings and/or boom attachments are considered part of the load, and their weight must be deducted from the rated lifting capacity to determine the net load.

Lifting capacities are based on boom sections locked by remote control in appropriate position as per operator's hand book.

Consult crane manual to determine weight reduction for load handling devices and boom attachments.

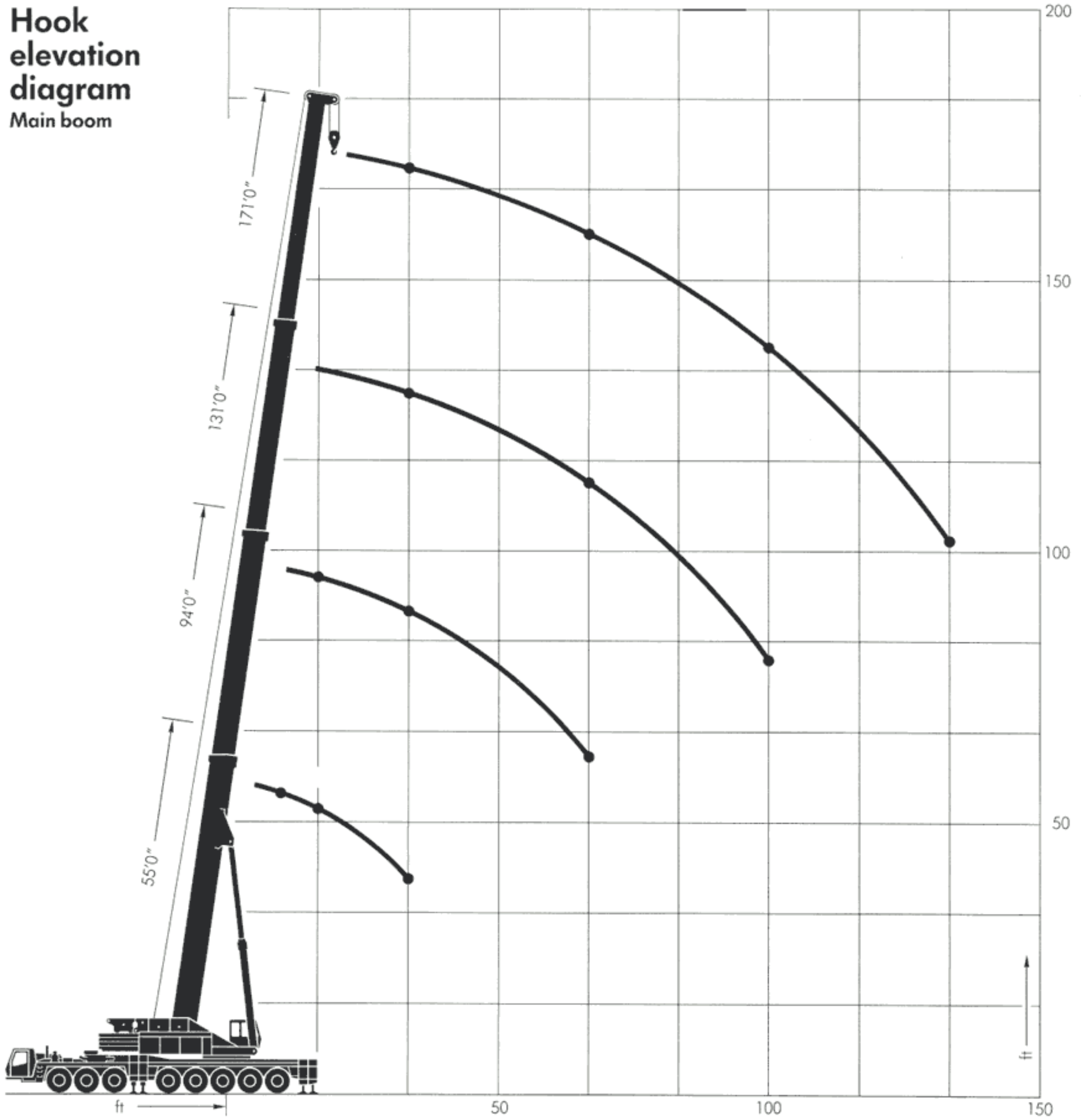
Operate crane strictly in accordance with operator's manual.

*: ± 10° over rear
 *): represents test load over rear
 B: Outrigger base 26'3"

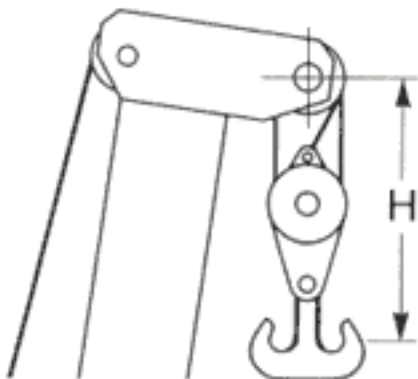
Load capacities above bold line are based on structural strength, and tipping must not be relied upon as a limitation of lifting capacity. Rated loads must not be exceeded.

Hook elevation diagram

Main boom



Hooks



| | | | | | |
|------------|-----|------|------|------|-------|
| Capacity | ton | 265 | 145 | 90 | 35 |
| Sheaves | | 12 | 6 | 4 | 1 |
| Distance H | ft | 9'6" | 8'2" | 7'7" | 6'10" |
| Weight | ton | 3.3 | 1.9 | 1.2 | 0.7 |

Lifting capacities in 1000 lbs on outriggers

360° Boom extension

0° Off-set angle

Counterweight 132,280 lbs

| Radius (ft) | Boom length 164 ft | | | | |
|----------------|--------------------|-------|-------|-------|--------|
| | Jib length (ft) | | | | |
| | 40'0" | 53'0" | 66'0" | 92'0" | 118'0" |
| 40 | 56.2 | | | | |
| 45 | 56.2 | 47.4 | 39.6 | | |
| 50 | 56.1 | 47.4 | 39.6 | 27.5 | |
| 55 | 54.3 | 46.4 | 39.6 | 27.5 | |
| 60 | 51.5 | 44.5 | 39.4 | 27.5 | 19.8 |
| 65 | 49.0 | 42.3 | 37.8 | 27.5 | 19.8 |
| 70 | 46.8 | 40.4 | 36.0 | 27.5 | 19.8 |
| 75 | 44.6 | 38.6 | 34.3 | 27.1 | 19.8 |
| 80 | 42.5 | 36.7 | 32.7 | 26.3 | 19.7 |
| 85 | 40.6 | 34.9 | 31.3 | 25.0 | 19.4 |
| 90 | 38.8 | 33.4 | 29.8 | 23.8 | 18.6 |
| 95 | 37.0 | 32.0 | 28.5 | 22.7 | 17.8 |
| 100 | 35.4 | 30.7 | 27.4 | 21.7 | 17.2 |
| 105 | 33.7 | 29.5 | 26.2 | 20.7 | 16.5 |
| 110 | 32.2 | 28.3 | 25.0 | 19.8 | 15.6 |
| 115 | 30.7 | 27.3 | 24.0 | 19.0 | 15.0 |
| 120 | 29.1 | 26.2 | 23.0 | 18.2 | 14.5 |
| 125 | 27.7 | 25.0 | 22.2 | 17.5 | 13.8 |
| 130 | 26.5 | 24.0 | 21.1 | 16.9 | 13.1 |
| 135 | 25.0 | 22.9 | 20.4 | 16.1 | 12.6 |
| 140 | 23.6 | 21.8 | 19.7 | 15.3 | 12.1 |
| 145 | 22.3 | 20.8 | 19.0 | 14.7 | 11.6 |
| 150 | 20.9 | 20.1 | 18.2 | 14.2 | 10.9 |
| 155 | 19.2 | 19.3 | 17.5 | 13.5 | 10.3 |
| 160 | 17.4 | 18.2 | 16.7 | 12.9 | 9.9 |
| 165 | 15.7 | 16.6 | 15.9 | 12.4 | 9.6 |
| 170 | 14.0 | 15.1 | 15.2 | 11.9 | 9.1 |
| 175 | 12.7 | 13.6 | 14.0 | 11.3 | 8.5 |
| 180 | | 12.1 | 12.7 | 10.8 | 8.1 |
| 185 | | 10.7 | 11.5 | 10.4 | 7.8 |
| 190 | | 9.7 | 10.2 | 10.1 | 7.5 |
| 195 | | | 9.0 | 9.8 | 7.1 |
| 200 | | | | 9.2 | 6.8 |
| 205 | | | | 8.5 | 6.4 |
| 210 | | | | 7.7 | 5.9 |

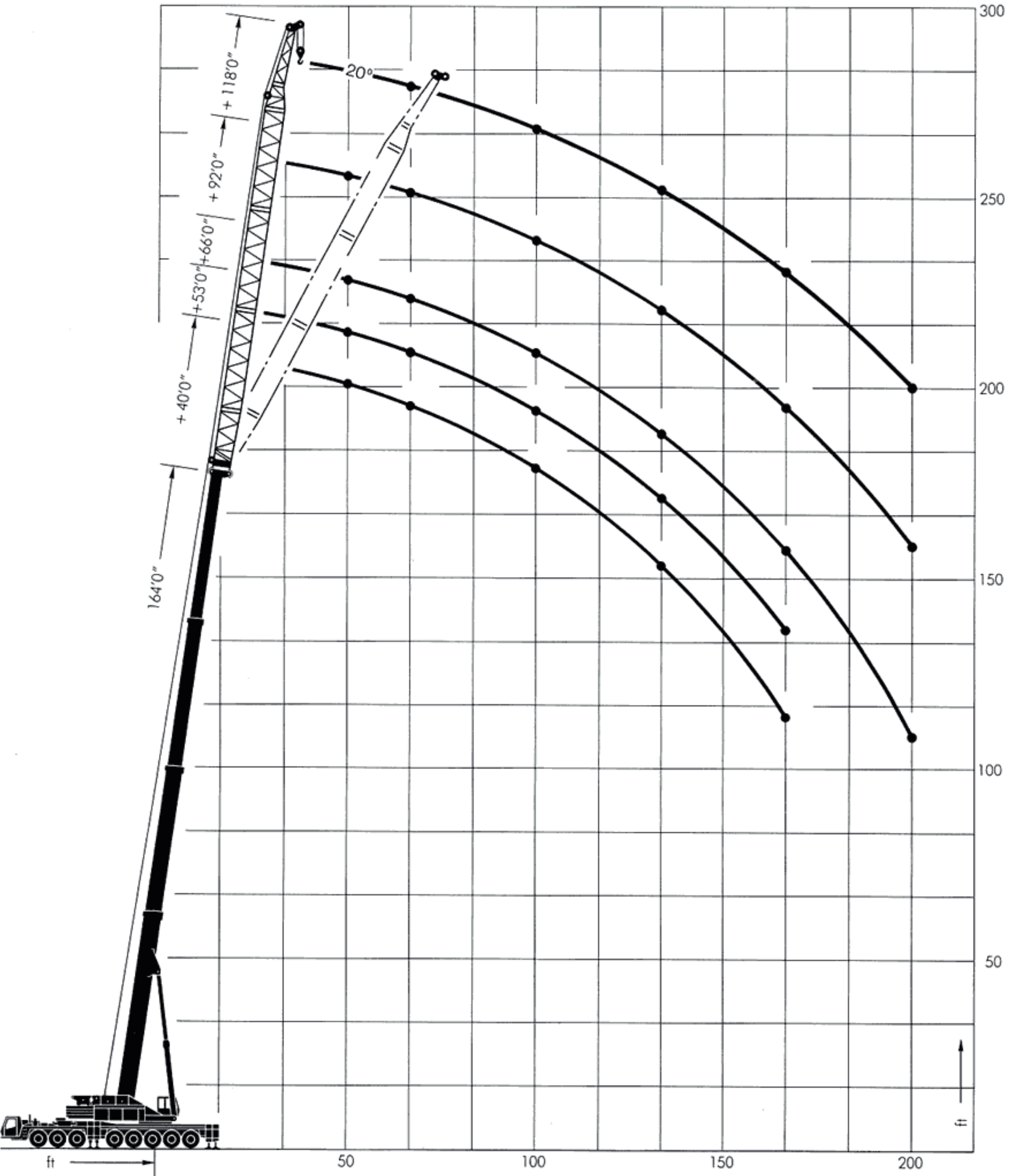
20° Off-set angle

Counterweight 132,280 lbs

| Radius (ft) | Boom length 164 ft | | | | |
|----------------|--------------------|-------|-------|-------|--------|
| | Jib length (ft) | | | | |
| | 40'0" | 53'0" | 66'0" | 92'0" | 118'0" |
| 40 | | | | | |
| 45 | | | | | |
| 50 | | | | | |
| 55 | 39.0 | | | | |
| 60 | 37.9 | 35.9 | | | |
| 65 | 36.7 | 34.5 | | | |
| 70 | 35.5 | 33.3 | 29.4 | | |
| 75 | 34.4 | 32.3 | 28.5 | | |
| 80 | 33.4 | 31.4 | 27.6 | 20.3 | |
| 85 | 32.4 | 30.4 | 26.9 | 19.6 | |
| 90 | 31.4 | 29.7 | 25.9 | 19.0 | |
| 95 | 30.5 | 28.8 | 25.2 | 18.4 | 13.6 |
| 100 | 29.7 | 27.6 | 24.7 | 17.8 | 13.1 |
| 105 | 29.1 | 26.6 | 24.0 | 17.1 | 12.7 |
| 110 | 28.4 | 25.1 | 23.0 | 16.6 | 12.2 |
| 115 | 27.7 | 24.3 | 22.2 | 16.0 | 11.6 |
| 120 | 27.1 | 23.6 | 21.4 | 15.5 | 11.1 |
| 125 | 26.6 | 22.6 | 20.4 | 15.1 | 10.7 |
| 130 | 26.1 | 22.1 | 19.7 | 14.6 | 10.4 |
| 135 | 25.6 | 21.4 | 19.1 | 14.1 | 9.9 |
| 140 | 25.2 | 20.6 | 18.4 | 13.7 | 9.5 |
| 145 | 24.6 | 19.9 | 17.7 | 13.4 | 9.2 |
| 150 | 23.0 | 19.3 | 17.1 | 13.0 | 8.8 |
| 155 | 21.0 | 18.4 | 16.4 | 12.7 | 8.5 |
| 160 | 19.1 | 17.6 | 15.9 | 12.3 | 8.2 |
| 165 | 17.3 | 16.8 | 15.5 | 11.7 | 7.8 |
| 170 | 15.6 | 15.9 | 15.0 | 11.1 | 7.5 |
| 175 | 13.9 | 15.1 | 14.5 | 10.7 | 7.2 |
| 180 | | 13.8 | 14.0 | 10.3 | 6.8 |
| 185 | | 12.2 | 13.3 | 10.0 | 6.5 |
| 190 | | 10.8 | 12.1 | 9.7 | 6.1 |
| 195 | | | 10.8 | 9.3 | 5.8 |
| 200 | | | | 8.9 | 5.5 |
| 205 | | | | 8.4 | 5.1 |
| 210 | | | | 8.1 | 4.8 |

Hook elevation diagram

Boom extension



Lifting capacities in 1000 lbs on outriggers

360° Power luffing jib

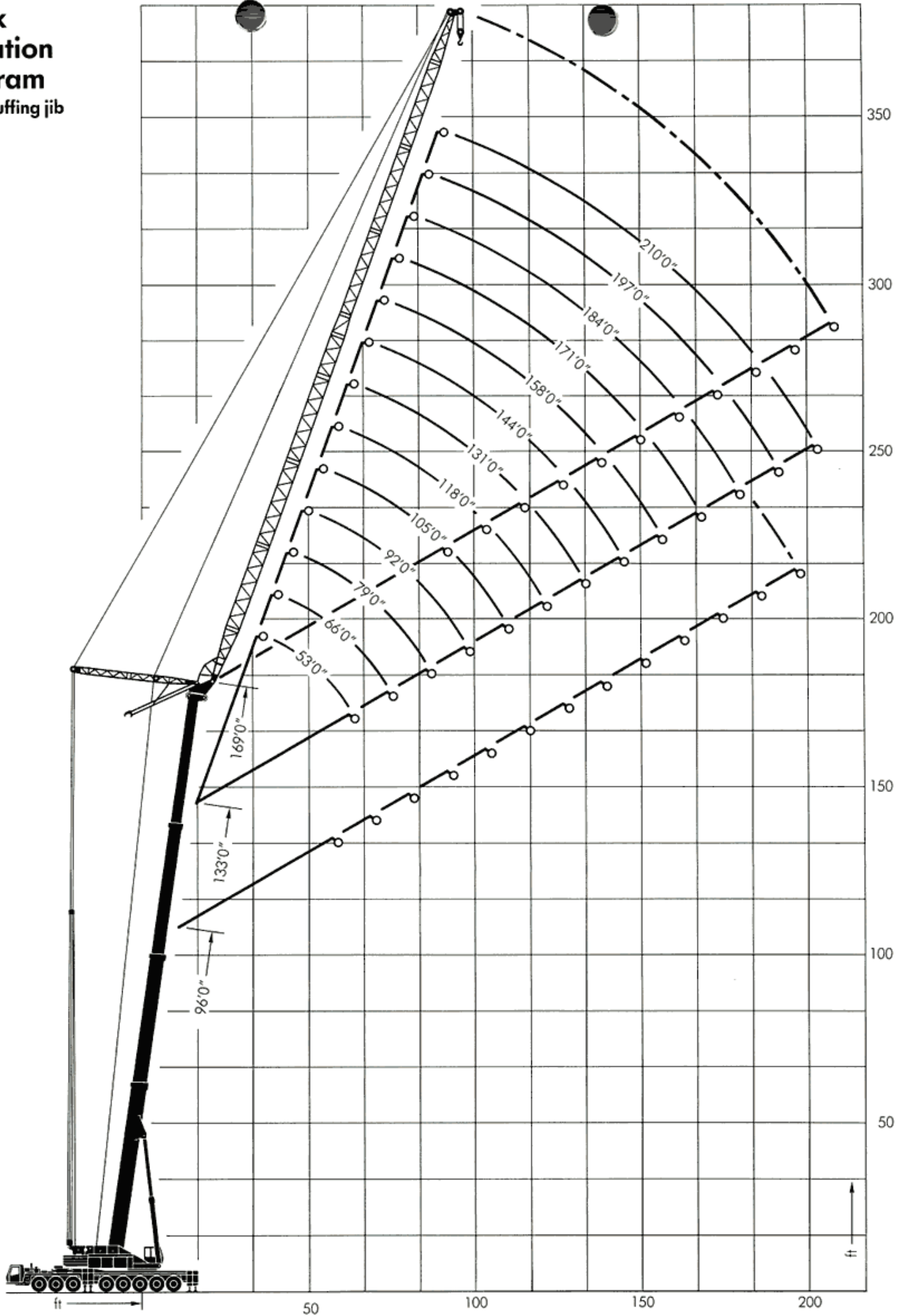
Counterweight 132.280 lbs

| Radius (ft) | Jib length (ft) | | | | | | | | | | | | | |
|------------------------------------|-----------------|------|------|------|------|------|------|------|------|------|-----|-----|-----|-----|
| | 53* | 66* | 79 | 92 | 105 | 118 | 131 | 144 | 158 | 171 | 184 | 197 | 210 | |
| Boom length 164'0" + 5'0" = 169'0" | 60 | 41.8 | | | | | | | | | | | | |
| | 65 | 41.8 | | | | | | | | | | | | |
| | 70 | 38.3 | 35.9 | 30.4 | | | | | | | | | | |
| | 75 | | 35.9 | 30.4 | 26.6 | | | | | | | | | |
| | 80 | | 35.3 | 30.4 | 26.6 | 22.9 | | | | | | | | |
| | 85 | | 33.0 | 30.4 | 26.6 | 22.9 | 19.4 | | | | | | | |
| | 90 | | | 30.4 | 26.6 | 22.9 | 19.4 | | | | | | | |
| | 95 | | | | 26.6 | 22.9 | 19.4 | 16.0 | | | | | | |
| | 100 | | | | 26.6 | 22.9 | 19.4 | 16.0 | 13.6 | 11.2 | | | | |
| | 105 | | | | 26.6 | 22.9 | 19.4 | 16.0 | 13.6 | 11.2 | 9.2 | | | |
| | 110 | | | | | 22.9 | 19.4 | 16.0 | 13.6 | 11.2 | 9.2 | | | |
| | 115 | | | | | 22.9 | 19.4 | 16.0 | 13.6 | 11.2 | 9.2 | 7.5 | | |
| | 120 | | | | | | 19.4 | 16.0 | 13.6 | 11.2 | 9.2 | 7.5 | 6.1 | |
| | 125 | | | | | | 19.4 | 16.0 | 13.6 | 11.2 | 9.2 | 7.5 | 6.1 | 5.0 |
| | 130 | | | | | | 19.4 | 16.0 | 13.6 | 11.2 | 9.2 | 7.5 | 6.1 | 5.0 |
| | 135 | | | | | | | 16.0 | 13.6 | 11.2 | 9.2 | 7.5 | 6.1 | 5.0 |
| | 140 | | | | | | | | 13.6 | 11.2 | 9.2 | 7.5 | 6.1 | 5.0 |
| | 145 | | | | | | | | 13.6 | 11.2 | 9.2 | 7.5 | 6.1 | 5.0 |
| | 150 | | | | | | | | 13.6 | 11.2 | 9.2 | 7.5 | 6.1 | 5.0 |
| | 155 | | | | | | | | | 11.2 | 9.2 | 7.5 | 6.1 | 5.0 |
| 160 | | | | | | | | | 11.2 | 9.2 | 7.5 | 6.1 | 5.0 | |
| 165 | | | | | | | | | | 9.2 | 7.5 | 6.1 | 5.0 | |
| 170 | | | | | | | | | | 9.2 | 7.5 | 6.1 | 5.0 | |
| 175 | | | | | | | | | | 9.2 | 7.5 | 6.1 | 5.0 | |
| 180 | | | | | | | | | | | 7.5 | 6.1 | 5.0 | |
| 185 | | | | | | | | | | | | 6.1 | 5.0 | |
| 190 | | | | | | | | | | | | 6.1 | 5.0 | |
| 195 | | | | | | | | | | | | | 5.0 | |
| 200 | | | | | | | | | | | | | 5.0 | |

*: With compensation weights

Hook elevation diagram

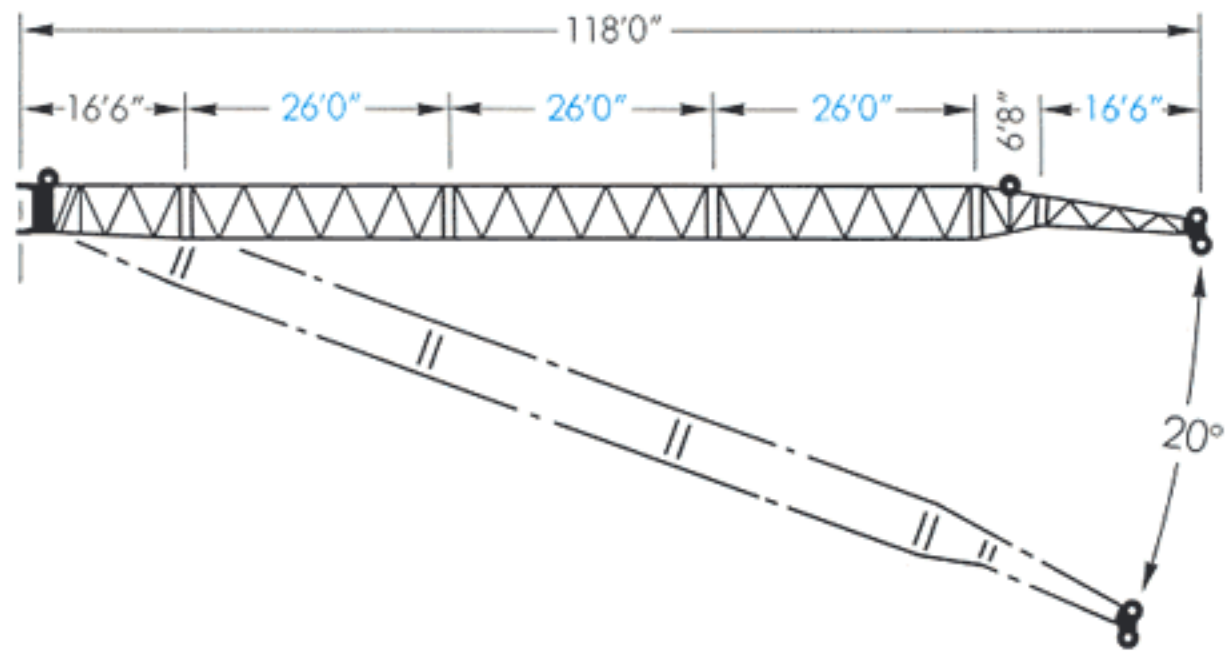
Power luffing jib



Jibs

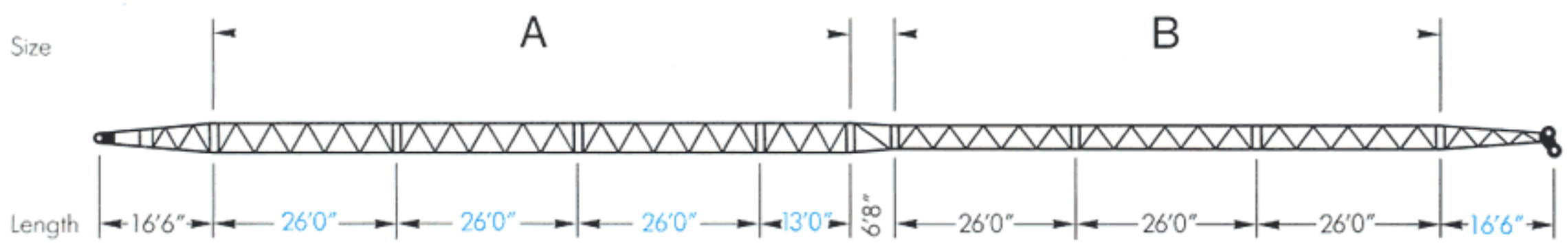
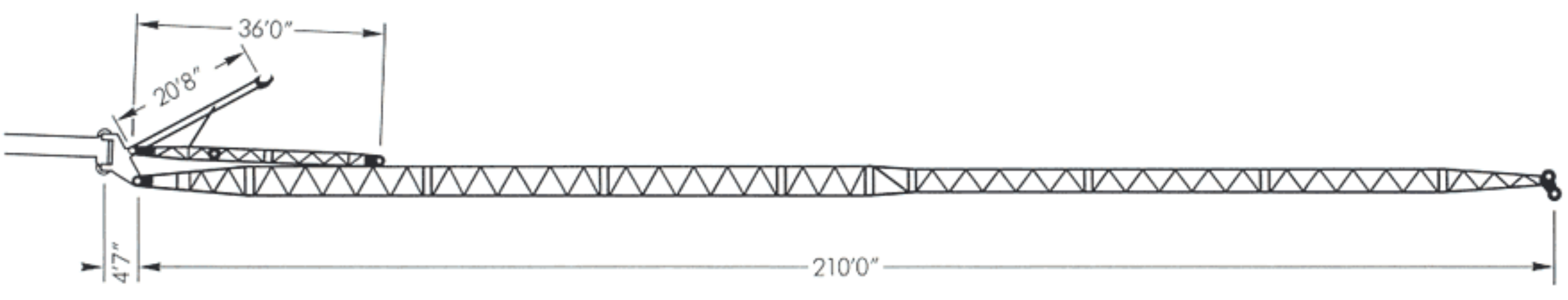
Boom extension

In sections of 26'0" from 40'0" to 118'0", welded lattice-type construction, 20° off-set

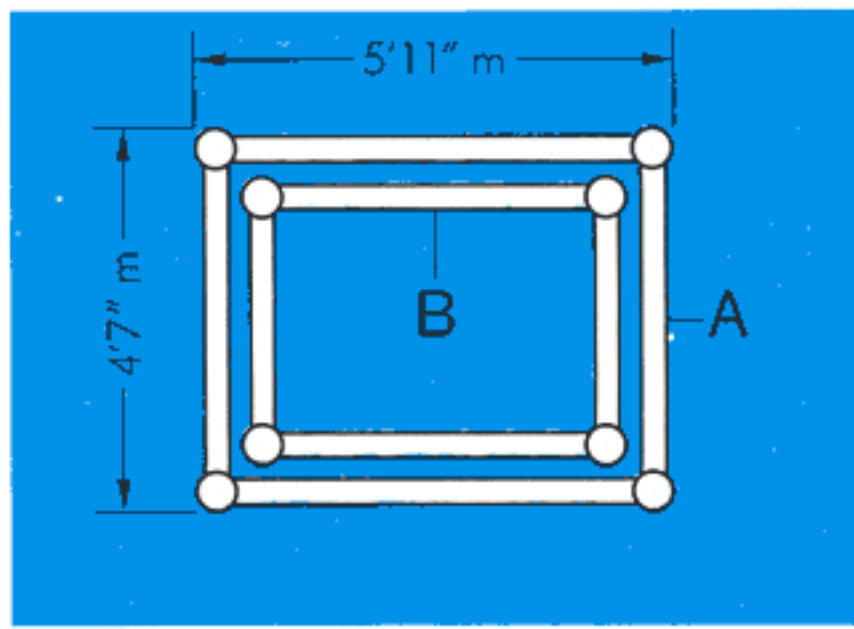


Power luffing jib

In sections of 26'0" from 53'0" to 210'0", welded lattice-type construction, including luffing jib adaptor, A-frame, back-stop, pendant ropes, luffing block and anemometer. Luffing jib operated by auxiliary hoist












Blue figures: elements alternatively used for either lattice boom extension or luffing jib configuration.



Krupp Hydraulic Mobile Cranes

Product Range

| Truck Cranes | | Max. lifting capacity | Max. hook height |
|---------------------------|--|-----------------------|------------------|
| 100 GMT |  | 120 ton | 220 ft* |
| 180 GMT |  | 250 ton | 320 ft* |
| 250 GMT |  | 365 ton | 345 ft* |
| 350 GMT |  | 450 ton | 365 ft* |
| 500 GMT |  | 600 ton | 430 ft* |
| All-Terrain Cranes | | | |
| 25 GMT-AT |  | 25 ton | 122 ft |
| 35 GMT-AT |  | 35 ton | 129 ft |
| 70 GMT-AT |  | 80 ton | 178 ft |
| 140 GMT-AT |  | 165 ton | 296 ft* |

* incl. power luffing jib

Krupp Industries Inc.
1370 Washington Pike
Bridgeville, Pa. 15017/USA

Telephone (412) 221-7041
Telex 6818083
Telefax (412) 221-7684

Krupp Canada Inc.
98 Columbus Street
Pointe Claire, Que. H9R 4K4/Canada

Telephone (514) 694-4740
Telex 05-822881
Telefax (514) 694-5280

Subject to technical modifications without notice