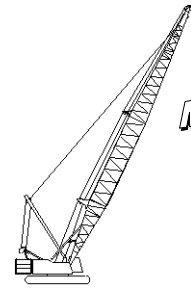




Liftcrane Boom Capacities

Boom No. 82LR
149,600 Lb. Counterweight
Rating Over End of Blocked Crawlers
No Travel - Limited Swing

Meets
ANSI B30.5
Requirements



999 SERIES 1

LIFTING CAPACITIES: Lifting capacities for various boom lengths and operating radii are for freely suspended loads and do not exceed 75% of a static tipping load over end of machine with crawlers blocked. Capacities based on structural competence are denoted by an asterisk (*).

Upper boom point capacity for liftcrane service with single part whip line is 29,500 Lbs. When boom butt mounted auxiliary drum is used, capacity with single part whip line is 20,000 Lbs. In all cases, upper boom point capacities cannot exceed those listed for main boom capacity.

Weight of jib, all load blocks, hooks, weight ball, slings, hoist lines, etc., beneath boom and jib point sheaves, is considered part of main boom load. Boom is not to be lowered beyond radii where combined weights are greater than rated capacity. Where no capacity is shown, operation is not intended or approved.

OPERATING CONDITIONS: Machine to operate in a level position on a firm uniformly supporting surface with gantry up. Drive and idler tumblers must be properly blocked so that centerline of tumblers becomes tipping fulcrum. Swing is limited

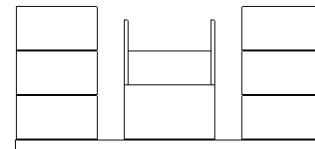
to that sector shown on Operating Range Diagram No. 8224-A. Refer to boom rigging No. 196100 and Wire Rope Specification chart No. 8315-A. Crane operator judgment must be used to allow for dynamic load effects of swinging, hoisting or lowering, wind conditions, as well as adverse operating conditions and physical machine depreciation. Refer to operators manual for operating guidelines.

OPERATING RADIUS: Operating radius is horizontal distance from axis of rotation to center of vertical hoist line or load block. Boom angle is angle between horizontal and centerline of boom butt and inserts, and is an indication of operating radius. In all cases, operating radius shall govern capacity.

BOOM POINT ELEVATION: Boom point elevation is vertical distance from ground level to centerline of boom point shaft.

MACHINE EQUIPMENT: Machine equipped with 28 Ft. 2 in. crawlers, 48 in. treads, 10 Ft. 3 in. retractable gantry, 30 Ft. live mast, 20 part boom hoist reeving, boom support straps and 149,600 Lb. counterweight.

Maximum Boom and Jib Lengths Lifted Unassisted		
WITHOUT BOOM CATWALKS		
Over End of Blocked Crawlers		
Boom Length	Jib No. 134	Jib No. 123
280 Ft.	—	—
270 Ft.	—	—
260 Ft.	40 Ft.	50 Ft.
250 Ft.	60 Ft.	60 Ft.
240 Ft.	80 Ft.	60 Ft.
WITH BOOM CATWALKS		
Over End of Blocked Crawlers		
Boom Length	Jib No. 134	Jib No. 123
280 Ft.	—	—
270 Ft.	—	—
260 Ft.	30 Ft.	(a) 50 Ft.
250 Ft.	(a) 60 Ft.	60 Ft.
240 Ft.	80 Ft.	60 Ft.
Load block, hook and weight ball on ground at start.		
(a) Machine must be equipped with lowerworks jacking cylinders.		



149,600 Lb. Crane Counterweight
6 Side Boxes - 1 Center Box

Boom Catwalks Deduct
Deduct 700 Lbs. from capacities when boom catwalks are attached.

Deduct From Capacities When Jib Is Attached		
Jib Length	Jib No. 134	Jib No. 123
30 Ft.	2,700 Lbs.	2,500 Lbs.
40 Ft.	3,500 Lbs.	3,100 Lbs.
50 Ft.	4,300 Lbs.	3,700 Lbs.
60 Ft.	5,100 Lbs.	4,400 Lbs.
70 Ft.	6,100 Lbs.	—
80 Ft.	7,100 Lbs.	—

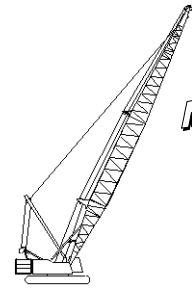
- Consult jib chart for jib capacities.
- Upper boom point cannot be used when jib is attached.



Liftcrane Boom Capacities

Boom No. 82LR
149,600 Lb. Counterweight
Rating Over End of Blocked Crawlers
No Travel - Limited Swing

**Meets
ANSI B30.5
Requirements**



999 SERIES 1

Oper. Rad. Feet	Boom Ang. Deg.	Boom Point Elev. Feet	Boom Capacity Pounds
120 Ft. Boom			
24	80.9	126.6	265,500 *
26	79.9	126.3	265,500 *
28	78.9	125.9	252,400 *
30	78.0	125.5	240,300 *
32	77.0	125.1	229,200 *
34	76.0	124.6	210,600
36	75.0	124.1	192,000
38	74.0	123.5	176,300
40	73.0	122.9	162,800
42	72.0	122.3	151,200
44	71.0	121.6	141,000
46	70.0	120.9	132,000
48	69.0	120.2	124,000
50	68.0	119.4	116,900
55	65.4	117.2	102,000
60	62.7	114.8	90,200
65	60.0	112.1	80,600
70	57.2	109.0	72,700
75	54.3	105.6	66,100
80	51.3	101.8	60,400
85	48.2	97.6	55,500
90	44.9	92.9	51,200
95	41.4	87.5	47,400
100	37.7	81.5	44,100
105	33.6	74.5	41,100
110	29.0	66.2	38,400
115	23.6	56.1	35,900
120	16.6	42.4	33,700
130 Ft. Boom			
26	80.7	136.4	265,500 *
28	79.8	136.1	263,400 *
30	78.9	135.7	249,200 *
32	78.0	135.3	233,100
34	77.1	134.9	210,700
36	76.2	134.4	192,000
38	75.3	133.9	176,300
40	74.4	133.4	162,800
42	73.5	132.8	151,100
44	72.5	132.2	141,000
46	71.6	131.5	132,000
48	70.7	130.8	124,000
50	69.7	130.1	116,800
55	67.4	128.2	101,900
60	65.0	125.9	90,100
65	62.5	123.5	80,500
70	60.0	120.7	72,600
75	57.4	117.7	66,000
80	54.8	114.3	60,300
85	52.0	110.6	55,400

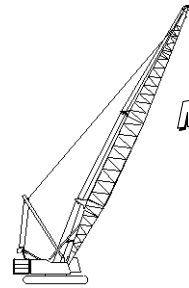
Oper. Rad. Feet	Boom Ang. Deg.	Boom Point Elev. Feet	Boom Capacity Pounds
130 Ft. Boom			
90	49.2	106.5	51,100
95	46.2	102.0	47,300
100	43.0	96.9	44,000
105	39.7	91.2	41,000
110	36.1	84.8	38,300
115	32.2	77.4	35,900
120	27.8	68.8	33,600
125	22.6	58.2	31,600
130	15.9	43.9	29,700
140 Ft. Boom			
28	80.5	146.3	265,500 *
30	79.7	145.9	248,800 *
32	78.9	145.5	233,200
34	78.0	145.1	210,800
36	77.2	144.7	192,100
38	76.4	144.2	176,300
40	75.5	143.7	162,800
42	74.7	143.2	151,100
44	73.8	142.6	140,900
46	73.0	142.0	131,900
48	72.1	141.4	123,900
50	71.3	140.7	116,800
55	69.1	138.9	101,800
60	66.9	136.9	90,000
65	64.6	134.6	80,400
70	62.3	132.1	72,500
75	60.0	129.4	65,800
80	57.6	126.4	60,100
85	55.2	123.0	55,200
90	52.6	119.4	50,900
95	50.0	115.4	47,200
100	47.3	111.0	43,800
105	44.4	106.1	40,800
110	41.4	100.8	38,200
115	38.2	94.8	35,700
120	34.8	88.0	33,500
125	31.0	80.3	31,500
130	26.8	71.2	29,600
135	21.8	60.1	27,900
140	15.4	45.2	26,300

Oper. Rad. Feet	Boom Ang. Deg.	Boom Point Elev. Feet	Boom Capacity Pounds
150 Ft. Boom			
30	80.4	156.1	248,500 *
32	79.6	155.7	233,200 *
34	78.9	155.3	210,700
36	78.1	154.9	192,000
38	77.3	154.5	176,300
40	76.5	154.0	162,700
42	75.7	153.5	151,000
44	74.9	153.0	140,800
46	74.1	152.4	131,800
48	73.3	151.9	123,800
50	72.5	151.2	116,600
55	70.5	149.6	101,700
60	68.5	147.7	89,800
65	66.4	145.6	80,200
70	64.3	143.3	72,300
75	62.2	140.8	65,600
80	60.0	138.1	59,900
85	57.8	135.0	55,000
90	55.5	131.7	50,800
95	53.1	128.2	47,000
100	50.7	124.2	43,600
105	48.2	120.0	40,700
110	45.6	115.3	38,000
115	42.8	110.1	35,500
120	39.9	104.5	33,300
125	36.9	98.2	31,300
130	33.6	91.1	29,500
135	29.9	83.0	27,800
140	25.8	73.5	26,200
145	21.0	62.0	24,700



Liftcrane Boom Capacities

Meets
ANSI B30.5
Requirements



Boom No. 82LR
149,600 Lb. Counterweight
Rating Over End of Blocked Crawlers
No Travel - Limited Swing

999 SERIES 1

Oper. Rad. Feet	Boom Ang. Deg.	Boom Point Elev. Feet	Boom Capacity Pounds
160 Ft. Boom			
30	81.0	166.2	236,000 *
32	80.3	165.9	232,500 *
34	79.6	165.5	210,700
36	78.8	165.1	191,900
38	78.1	164.7	176,100
40	77.4	164.3	162,500
42	76.6	163.8	150,800
44	75.9	163.3	140,600
46	75.2	162.8	131,500
48	74.4	162.3	123,500
50	73.7	161.7	116,300
55	71.8	160.1	101,300
60	69.9	158.4	89,500
65	68.0	156.5	79,900
70	66.0	154.4	71,900
75	64.1	152.0	65,200
80	62.0	149.5	59,500
85	60.0	146.7	54,600
90	57.9	143.7	50,300
95	55.8	140.4	46,500
100	53.6	136.9	43,200
105	51.3	133.1	40,200
110	49.0	128.9	37,500
115	46.6	124.3	35,100
120	44.0	119.4	32,900
125	41.4	114.0	30,900
130	38.6	108.0	29,000
135	35.7	101.4	27,300
140	32.5	94.0	25,700
145	29.0	85.6	24,300
150	25.0	75.8	22,900
155	20.4	63.8	21,600
170 Ft. Boom			
32	80.9	176.0	228,400 *
34	80.2	175.7	210,600
36	79.5	175.3	191,800
38	78.8	174.9	175,900
40	78.1	174.5	162,400
42	77.4	174.1	150,600
44	76.7	173.6	140,400
46	76.0	173.1	131,300
48	75.3	172.6	123,300
50	74.7	172.1	116,100
55	72.9	170.6	101,100
60	71.1	169.0	89,200
65	69.3	167.2	79,600
70	67.5	165.2	71,700
75	65.7	163.1	65,000
80	63.8	160.7	59,300
85	61.9	158.2	54,300
90	60.0	155.4	50,000

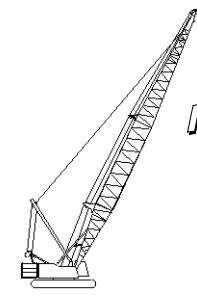
Oper. Rad. Feet	Boom Ang. Deg.	Boom Point Elev. Feet	Boom Capacity Pounds
170 Ft. Boom			
95	58.0	152.4	46,300
100	56.0	149.1	42,900
105	54.0	145.6	39,900
110	51.9	141.8	37,200
115	49.7	137.8	34,800
120	47.4	133.4	32,600
125	45.1	128.6	30,600
130	42.7	123.4	28,700
135	40.1	117.7	27,000
140	37.4	111.5	25,500
145	34.6	104.6	24,000
150	31.5	96.9	22,700
155	28.1	88.2	21,400
160	24.2	78.0	20,200
165	19.7	65.6	19,100
180 Ft. Boom			
34	80.7	185.8	206,400 *
36	80.1	185.5	191,700
38	79.4	185.1	175,800
40	78.8	184.7	162,300
42	78.1	184.3	150,500
44	77.5	183.9	140,200
46	76.8	183.4	131,200
48	76.2	182.9	123,100
50	75.5	182.4	115,900
55	73.9	181.1	100,900
60	72.2	179.5	89,000
65	70.5	177.9	79,400
70	68.8	176.0	71,400
75	67.1	174.0	64,700
80	65.4	171.8	59,000
85	63.6	169.4	54,100
90	61.8	166.8	49,800
95	60.0	164.0	46,000
100	58.1	161.0	42,600
105	56.3	157.8	39,600
110	54.3	154.4	36,900
115	52.3	150.6	34,500
120	50.3	146.6	32,300
125	48.2	142.3	30,300
130	46.0	137.7	28,500
135	43.8	132.7	26,800
140	41.4	127.2	25,200
145	38.9	121.3	23,700
150	36.3	114.8	22,400
155	33.6	107.7	21,100
160	30.6	99.7	20,000
165	27.3	90.6	18,900
170	23.6	80.1	17,800
175	19.2	67.3	16,800

Oper. Rad. Feet	Boom Ang. Deg.	Boom Point Elev. Feet	Boom Capacity Pounds
190 Ft. Boom			
36	80.6	195.6	191,600
38	80.0	195.3	175,700
40	79.4	194.9	162,100
42	78.8	194.5	150,300
44	78.2	194.1	140,100
46	77.5	193.7	131,000
48	76.9	193.2	122,900
50	76.3	192.7	115,700
55	74.7	191.5	100,700
60	73.2	190.0	88,800
65	71.6	188.4	79,100
70	70.0	186.7	71,200
75	68.4	184.8	64,400
80	66.8	182.7	58,700
85	65.1	180.5	53,800
90	63.4	178.1	49,500
95	61.7	175.5	45,700
100	60.0	172.7	42,300
105	58.2	169.7	39,400
110	56.5	166.5	36,700
115	54.6	163.1	34,200
120	52.8	159.4	32,000
125	50.8	155.5	30,000
130	48.9	151.2	28,200
135	46.8	146.7	26,500
140	44.7	141.8	24,900
145	42.5	136.6	23,500
150	40.3	130.9	22,100
155	37.9	124.8	20,900
160	35.3	118.0	19,700
165	32.6	110.6	18,600
170	29.7	102.4	17,600
175	26.5	93.0	16,600
180	22.9	82.1	15,700
185	18.7	69.0	14,800



Liftcrane Boom Capacities

Meets
ANSI B30.5
Requirements



Boom No. 82LR
149,600 Lb. Counterweight
Rating Over End of Blocked Crawlers
No Travel - Limited Swing

999 SERIES 1

Oper. Rad. Feet	Boom Ang. Deg.	Boom Point Elev. Feet	Boom Capacity Pounds
200 Ft. Boom			
38	80.5	205.4	175,500
40	79.9	205.1	161,900
42	79.3	204.7	150,100
44	78.8	204.3	139,800
46	78.2	203.9	130,700
48	77.6	203.5	122,600
50	77.0	203.0	115,400
55	75.5	201.8	100,300
60	74.0	200.4	88,400
65	72.5	198.9	78,700
70	71.0	197.3	70,700
75	69.5	195.5	64,000
80	68.0	193.6	58,300
85	66.4	191.5	53,300
90	64.8	189.2	49,000
95	63.3	186.8	45,200
100	61.6	184.1	41,900
105	60.0	181.4	38,900
110	58.3	178.4	36,200
115	56.6	175.2	33,700
120	54.9	171.8	31,500
125	53.1	168.2	29,500
130	51.3	164.3	27,700
135	49.5	160.1	26,000
140	47.5	155.7	24,400
145	45.6	151.0	22,900
150	43.5	145.9	21,600
155	41.4	140.4	20,300
160	39.2	134.5	19,200
165	36.9	128.2	18,100
170	34.4	121.2	17,000
175	31.8	113.5	16,100
180	29.0	105.0	15,200
185	25.8	95.3	14,300
190	22.3	84.1	13,500
195	18.2	70.6	12,700

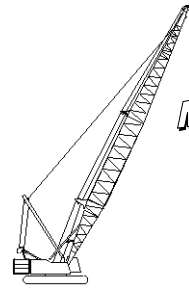
Oper. Rad. Feet	Boom Ang. Deg.	Boom Point Elev. Feet	Boom Capacity Pounds
210 Ft. Boom			
38	81.0	215.5	168,600 *
40	80.4	215.2	161,700
42	79.9	214.9	149,900
44	79.3	214.5	139,500
46	78.7	214.1	130,400
48	78.2	213.7	122,400
50	77.6	213.3	115,100
55	76.2	212.1	100,000
60	74.8	210.8	88,100
65	73.4	209.4	78,400
70	72.0	207.8	70,400
75	70.5	206.1	63,700
80	69.1	204.3	57,900
85	67.6	202.3	53,000
90	66.1	200.2	48,700
95	64.6	197.9	44,900
100	63.1	195.4	41,500
105	61.6	192.8	38,500
110	60.0	190.0	35,800
115	58.4	187.0	33,400
120	56.8	183.9	31,200
125	55.2	180.5	29,200
130	53.5	176.9	27,300
135	51.8	173.1	25,600
140	50.0	169.0	24,000
145	48.2	164.7	22,600
150	46.3	160.1	21,200
155	44.4	155.1	20,000
160	42.4	149.8	18,800
165	40.4	144.2	17,700
170	38.2	138.1	16,700
175	36.0	131.4	15,700
180	33.6	124.2	14,800
185	31.0	116.3	14,000
190	28.2	107.5	13,100
195	25.2	97.6	12,400
200	21.8	86.1	11,600
205	17.8	72.2	10,900

Oper. Rad. Feet	Boom Ang. Deg.	Boom Point Elev. Feet	Boom Capacity Pounds
220 Ft. Boom			
40	80.8	225.4	152,500 *
42	80.3	225.0	149,600
44	79.8	224.7	139,300
46	79.3	224.3	130,200
48	78.7	223.9	122,100
50	78.2	223.5	114,900
55	76.9	222.4	99,800
60	75.5	221.2	87,800
65	74.2	219.8	78,100
70	72.8	218.3	70,100
75	71.4	216.7	63,400
80	70.1	215.0	57,600
85	68.7	213.1	52,700
90	67.3	211.1	48,300
95	65.9	208.9	44,500
100	64.4	206.6	41,200
105	63.0	204.1	38,200
110	61.5	201.5	35,500
115	60.0	198.7	33,000
120	58.5	195.7	30,800
125	56.9	192.5	28,800
130	55.4	189.2	26,900
135	53.8	185.6	25,200
140	52.1	181.9	23,700
145	50.5	177.9	22,200
150	48.8	173.6	20,900
155	47.0	169.1	19,600
160	45.2	164.3	18,500
165	43.3	159.1	17,400
170	41.4	153.7	16,300
175	39.4	147.8	15,400
180	37.3	141.5	14,500
185	35.1	134.6	13,600
190	32.8	127.2	12,800
195	30.3	119.1	12,000
200	27.6	110.0	11,300
205	24.6	99.8	10,600
210	21.3	88.0	9,900
215	17.3	73.7	9,300



Liftcrane Boom Capacities

Meets
ANSI B30.5
Requirements



Boom No. 82LR
149,600 Lb. Counterweight
Rating Over End of Blocked Crawlers
No Travel - Limited Swing

999 SERIES 1

Oper. Rad. Feet	Boom Ang. Deg.	Boom Point Elev. Feet	Boom Capacity Pounds
230 Ft. Boom			
42	80.7	235.2	137,900 *
44	80.2	234.8	137,400 *
46	79.7	234.5	129,900
48	79.2	234.1	121,800
50	78.7	233.7	114,600
55	77.4	232.7	99,400
60	76.2	231.5	87,500
65	74.9	230.2	77,800
70	73.6	228.8	69,800
75	72.3	227.2	63,000
80	71.0	225.6	57,300
85	69.6	223.8	52,300
90	68.3	221.9	48,000
95	67.0	219.8	44,200
100	65.6	217.6	40,800
105	64.2	215.3	37,800
110	62.8	212.8	35,100
115	61.4	210.1	32,700
120	60.0	207.3	30,400
125	58.6	204.4	28,400
130	57.1	201.2	26,600
135	55.6	197.9	24,900
140	54.1	194.4	23,300
145	52.5	190.6	21,900
150	50.9	186.7	20,500
155	49.3	182.5	19,300
160	47.6	178.1	18,100
165	45.9	173.4	17,000
170	44.2	168.4	16,000
175	42.3	163.1	15,000
180	40.5	157.4	14,100
185	38.5	151.3	13,200
190	36.5	144.8	12,400
195	34.3	137.8	11,700
200	32.0	130.1	10,900
205	29.6	121.7	10,200
210	27.0	112.4	9,600
215	24.1	102.0	8,900
220	20.8	89.9	8,300
225	17.0	75.2	7,800

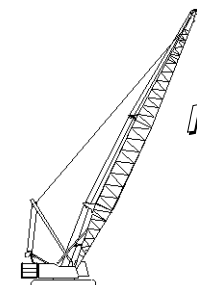
Oper. Rad. Feet	Boom Ang. Deg.	Boom Point Elev. Feet	Boom Capacity Pounds
240 Ft. Boom			
44	80.6	245.0	125,200 *
46	80.2	244.6	124,600 *
48	79.7	244.3	121,500
50	79.2	243.9	114,300
55	78.0	242.9	99,100
60	76.8	241.8	87,100
65	75.5	240.5	77,400
70	74.3	239.2	69,300
75	73.0	237.7	62,600
80	71.8	236.1	56,800
85	70.5	234.4	51,800
90	69.3	232.6	47,500
95	68.0	230.6	43,700
100	66.7	228.5	40,300
105	65.4	226.3	37,300
110	64.1	224.0	34,600
115	62.7	221.5	32,200
120	61.4	218.8	29,900
125	60.0	216.0	27,900
130	58.6	213.0	26,100
135	57.2	209.9	24,400
140	55.8	206.6	22,800
145	54.3	203.1	21,300
150	52.8	199.4	20,000
155	51.3	195.5	18,700
160	49.8	191.4	17,600
165	48.2	187.0	16,500
170	46.6	182.4	15,400
175	44.9	177.6	14,500
180	43.2	172.4	13,600
185	41.4	166.9	12,700
190	39.6	161.0	11,900
195	37.7	154.8	11,100
200	35.7	148.1	10,400
205	33.6	140.8	9,700
210	31.3	133.0	9,100
215	29.0	124.3	8,400
220	26.4	114.8	7,800
225	23.6	104.1	7,200
230	20.4	91.7	6,700
235	16.6	76.7	6,200

Oper. Rad. Feet	Boom Ang. Deg.	Boom Point Elev. Feet	Boom Capacity Pounds
250 Ft. Boom			
44	81.0	255.1	113,800 *
46	80.6	254.8	113,300 *
48	80.1	254.4	112,900 *
50	79.6	254.1	112,400 *
55	78.5	253.1	98,800
60	77.3	252.0	86,700
65	76.1	250.8	77,000
70	74.9	249.6	69,000
75	73.7	248.2	62,200
80	72.5	246.6	56,400
85	71.3	245.0	51,500
90	70.1	243.3	47,100
95	68.9	241.4	43,300
100	67.7	239.4	39,900
105	66.4	237.3	36,900
110	65.2	235.0	34,200
115	63.9	232.7	31,800
120	62.6	230.1	29,500
125	61.3	227.5	27,500
130	60.0	224.7	25,700
135	58.7	221.7	24,000
140	57.3	218.6	22,400
145	55.9	215.3	20,900
150	54.5	211.8	19,600
155	53.1	208.2	18,300
160	51.7	204.3	17,200
165	50.2	200.2	16,100
170	48.7	196.0	15,000
175	47.2	191.5	14,100
180	45.6	186.7	13,200
185	43.9	181.6	12,300
190	42.3	176.3	11,500
195	40.5	170.6	10,700
200	38.7	164.6	10,000
205	36.9	158.2	9,300
210	34.9	151.2	8,700
215	32.9	143.8	8,000
220	30.7	135.7	7,400
225	28.4	126.9	6,900
230	25.8	117.1	6,300
235	23.1	106.1	5,800
240	19.9	93.4	5,300
245	16.3	78.2	4,800



Liftcrane Boom Capacities

Meets
ANSI B30.5
Requirements



Boom No. 82LR
149,600 Lb. Counterweight
Rating Over End of Blocked Crawlers
No Travel - Limited Swing

999 SERIES 1

Oper. Rad. Feet	Boom Ang. Deg.	Boom Point Elev. Feet	Boom Capacity Pounds
260 Ft. Boom			
46	80.9	264.9	103,700 *
48	80.5	264.6	103,300 *
50	80.0	264.2	102,800 *
55	78.9	263.3	98,400
60	77.8	262.3	86,400
65	76.7	261.1	76,700
70	75.5	259.9	68,600
75	74.4	258.6	61,800
80	73.2	257.1	56,100
85	72.1	255.5	51,100
90	70.9	253.9	46,700
95	69.7	252.1	42,900
100	68.6	250.2	39,500
105	67.4	248.2	36,500
110	66.2	246.0	33,800
115	65.0	243.7	31,400
120	63.7	241.3	29,100
125	62.5	238.8	27,100
130	61.3	236.1	25,300
135	60.0	233.3	23,600
140	58.7	230.4	22,000
145	57.4	227.2	20,500
150	56.1	224.0	19,200
155	54.8	220.5	17,900
160	53.4	216.9	16,800
165	52.0	213.1	15,700
170	50.6	209.1	14,600
175	49.2	204.9	13,700
180	47.7	200.4	12,800
185	46.2	195.8	11,900
190	44.6	190.8	11,100
195	43.0	185.6	10,300
200	41.4	180.1	9,600
205	39.7	174.3	8,900
210	38.0	168.1	8,300
215	36.1	161.4	7,600
220	34.2	154.4	7,000
225	32.2	146.7	6,500
230	30.1	138.4	5,900
235	27.8	129.4	5,400
240	25.3	119.4	4,900
245	22.6	108.2	4,400

Oper. Rad. Feet	Boom Ang. Deg.	Boom Point Elev. Feet	Boom Capacity Pounds
270 Ft. Boom			
48	80.8	274.7	94,900 *
50	80.4	274.4	94,400 *
55	79.3	273.5	93,400 *
60	78.2	272.5	86,100
65	77.2	271.4	76,300
70	76.1	270.2	68,200
75	75.0	268.9	61,500
80	73.9	267.5	55,700
85	72.8	266.0	50,700
90	71.7	264.4	46,400
95	70.5	262.7	42,500
100	69.4	260.9	39,200
105	68.3	259.0	36,100
110	67.1	256.9	33,400
115	66.0	254.7	31,000
120	64.8	252.4	28,700
125	63.6	250.0	26,700
130	62.4	247.5	24,900
135	61.2	244.8	23,200
140	60.0	242.0	21,600
145	58.8	239.0	20,100
150	57.5	235.9	18,800
155	56.3	232.7	17,500
160	55.0	229.2	16,300
165	53.7	225.6	15,300
170	52.3	221.9	14,200
175	51.0	217.9	13,300
180	49.6	213.8	12,400
185	48.2	209.4	11,500
190	46.7	204.8	10,700
195	45.3	200.0	9,900
200	43.8	194.9	9,200
205	42.2	189.5	8,500
210	40.6	183.9	7,900
215	38.9	177.9	7,200
220	37.2	171.5	6,600
225	35.4	164.7	6,100
230	33.6	157.4	5,500
235	31.6	149.6	5,000
240	29.5	141.1	4,500
245	27.3	131.8	4,000

Oper. Rad. Feet	Boom Ang. Deg.	Boom Point Elev. Feet	Boom Capacity Pounds
280 Ft. Boom			
50	80.8	284.5	85,600 *
55	79.7	283.7	84,700 *
60	78.7	282.7	83,700 *
65	77.6	281.6	75,900
70	76.6	280.5	67,800
75	75.5	279.3	61,000
80	74.5	277.9	55,200
85	73.4	276.5	50,200
90	72.3	274.9	45,900
95	71.3	273.3	42,100
100	70.2	271.5	38,700
105	69.1	269.7	35,600
110	68.0	267.7	32,900
115	66.9	265.6	30,500
120	65.8	263.4	28,200
125	64.6	261.1	26,200
130	63.5	258.7	24,300
135	62.3	256.1	22,600
140	61.2	253.5	21,100
145	60.0	250.6	19,600
150	58.8	247.7	18,200
155	57.6	244.6	17,000
160	56.4	241.3	15,800
165	55.2	237.9	14,700
170	53.9	234.4	13,700
175	52.6	230.6	12,700
180	51.3	226.7	11,800
185	50.0	222.6	11,000
190	48.6	218.3	10,100
195	47.3	213.8	9,400
200	45.9	209.1	8,700
205	44.4	204.1	8,000
210	42.9	198.9	7,300
215	41.4	193.4	6,700
220	39.8	187.5	6,100
225	38.2	181.4	5,500
230	36.5	174.8	5,000
235	34.8	167.8	4,500
240	32.9	160.4	4,000