


Liftcrane Boom Capacities

Boom No. B10:290
20 610 kg Crane Counterweight
0 kg Carbody Counterweight
Crawler Machine on a Barge
0 Degree thru 3 Degree Static Machine List
No Travel - 360 Degree Rating

MLC100-1 SERIES 1


 **LIFTING CAPACITIES:** Lifting capacities are for a crawler machine when operating on a barge. Machine shall be positively secured to prevent shifting. Lifting capacities for various boom lengths and operating radii are for freely suspended loads and may be based on percent of static tipping or strength of structural components. Capacities must be reduced by applicable deducts.


Upper boom point capacity for liftcrane service with single part whip line from Drum 3 is 9 070 kg. When Drum 1 or Drum 2 is used, capacity with single part whip line is 12 520 kg. In all cases, upper boom point capacities cannot exceed those listed for main boom capacity.


Weight of all load blocks, hooks, weight ball, slings, hoist lines, etc., beneath boom point sheaves, is considered part of load. Boom is not to be lowered beyond radii where combined weights are greater than rated capacity. Where no capacity is shown, operation is not intended or approved.

BOOM BACKWARD STABILITY: A minimum of 2 parts hoist line is required when using Drum 2 or 3 on 13,0 m and 16,0 m boom lengths to maintain boom stability at high boom angles. **Caution: Do not operate using Drum 2 or 3 without required parts of hoist line.** Boom may not lower and boom hoist wire rope may go slack causing wire rope damage or failure.

OPERATING CONDITIONS: Machine to operate on a firm and uniformly supporting surface with machine list not to exceed degrees noted. Refer to Boom Rigging No. 84054317, Wire Rope Specifications chart No. 9709-A, Counterweight Arrangements chart No. 9703-A, and Wind Conditions chart No. 9708-A. Crane operator judgment must be used to allow for dynamic load effects of swinging, hoisting or lowering, wind conditions, as well as adverse operating conditions and physical machine depreciation. Refer to the Operator Manual for operating guidelines.

 **OPERATING RADIUS:** Operating radius is horizontal distance from axis of rotation at barge deck to center of vertical hoist line or load block.

 **BOOM ANGLE:** Boom angle in degrees (°) is angle between horizontal and centerline of boom butt and inserts, and is an indication of operating radius. In all cases, operating radius shall govern capacity.

 **BOOM POINT ELEVATION:** Boom point elevation is vertical distance from barge deck to centerline of boom point shaft.

MACHINE EQUIPMENT: Machine equipped with 6 480 mm crawlers, 900 mm treads, 4 390 mm gantry, 8 part boom hoist reeving, two 32 mm boom pendants, 20 610 kg crane counterweight, and 0 kg carbody counterweight.

Consult chart No. 9720-AM when Jib No. 117 is attached.

Upper Boom Point Deduct
Deduct 260 kg from capacities when upper boom point is attached. Deduct does not apply to 13,0 m thru 19,0 m boom lengths.

Third Line Deduct
Deduct 120 kg from capacities when boom top is equipped with optional 3rd sheave wire rope guide.

Deduct From Capacities When Jib No. 117 Is Attached	
Jib Length (m)	Deduct (kg)
9,1	2 050
12,2	2 400
15,2	2 800
18,3	3 350
Weight of jib and 325 kg suspended beneath jib point have been included in determination of deduct.	

Refer to Tables 1 and 2 for raising ability with the maximum weight of all load blocks, hooks, weight ball, slings, and hoist lines beneath boom point sheaves. For block weights shown with #, load blocks, hooks, weight ball, and slings must remain on barge deck until combined weights are within rated capacity of chart. Raising is not permitted in shaded areas of table.

Combined weight beneath boom point sheaves must not exceed block weight shown.

Table 1

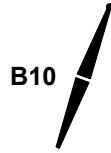
Boom Length (m)	Over End or Side of Crawlers	
	Machine List	
	0°	1° - 3°
	Block Weight (kg)	
13,0 - 37,0	1 725	1 725
40,0	1 725	1 200
43,0	1 200	325
46,0	325	325
49,0	325	#

Table 2

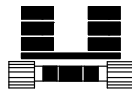
Boom Length (m)	Over End of Blocked Crawlers	
	Machine List	
	0°	1° - 3°
	Block Weight (kg)	
13,0 - 37,0	1 725	1 725
40,0	1 725	1 200
43,0	1 200	325
46,0	325	325
49,0 - 52,0	325	#
55,0	#	#

Warning: Crane must remain in-line with crawlers when raising over end of blocked crawlers until operating radius is within 360 degree chart. *Crane tipping or structural damage can occur.*

Explanation of Symbols



Boom No. B10:290



Crane Counterweight
+
Carbody Counterweight



360 Degree Rating



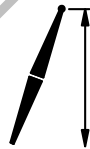
Boom Length



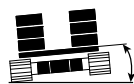
Operating Radius
(see page 1)



Boom Angle
(see page 1)



Boom Point Elevation
(see page 1)

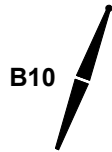


Machine List



Lifting Capacities
(see page 1)

MLC100-1 S-1



20 610 kg

 +

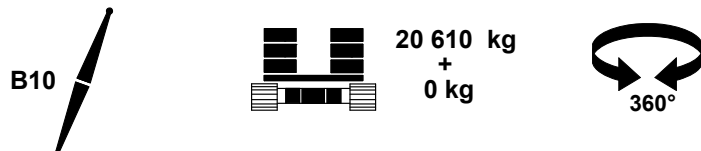
 0 kg



 13,0 m									
 m	 °	 m	 0° kg	 1° kg	 2° kg	 3° kg	 m		
3,7	79,8	14,9	89 200	81 000			3,7		
4,0	78,3	14,8	83 300	78 400	68 400		4,0		
4,5	76,0	14,7	72 200	64 700	58 000	52 500	4,5		
5,0	73,7	14,5	59 200	53 600	48 900	44 800	5,0		
5,5	71,4	14,4	49 700	45 600	42 100	39 000	5,5		
6,0	69,0	14,2	42 800	39 700	37 000	34 500	6,0		
6,5	66,6	14,0	37 700	35 200	33 000	31 000	6,5		
7,0	64,2	13,7	33 500	31 500	29 700	28 100	7,0		
7,5	61,7	13,5	30 000	28 400	26 900	25 600	7,5		
8,0	59,2	13,2	27 200	25 900	24 600	23 500	8,0		
9,0	53,8	12,5	22 900	21 900	21 000	20 100	9,0		
10,0	48,1	11,6	19 600	18 900	18 200	17 600	10,0		
11,0	41,7	10,6	17 100	16 600	16 100	15 600	11,0		
12,0	34,4	9,3	15 200	14 700	14 300	14 000	12,0		
13,0	25,2	7,4	13 500	13 200	12 900	12 600	13,0		

REFEREN

MLC100-1 S-1



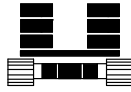
16,0 m							
m	°	m	0° kg	1° kg	2° kg	3° kg	m
4,0	80,6	17,9	83 900				4,0
4,5	78,7	17,8	72 300	63 400			4,5
5,0	76,8	17,6	59 400	52 700	47 300	42 800	5,0
5,5	75,0	17,5	49 800	45 000	40 900	37 400	5,5
6,0	73,1	17,4	42 900	39 200	36 000	33 300	6,0
6,5	71,2	17,2	37 700	34 800	32 200	30 000	6,5
7,0	69,3	17,0	33 500	31 200	29 100	27 200	7,0
7,5	67,4	16,8	30 100	28 100	26 400	24 800	7,5
8,0	65,4	16,6	27 200	25 600	24 100	22 800	8,0
9,0	61,4	16,0	22 900	21 700	20 600	19 600	9,0
10,0	57,2	15,4	19 700	18 800	17 900	17 100	10,0
11,0	52,7	14,7	17 100	16 400	15 800	15 200	11,0
12,0	48,0	13,9	15 200	14 600	14 100	13 600	12,0
13,0	42,9	12,8	13 500	13 100	12 700	12 300	13,0
14,0	37,3	11,6	12 200	11 800	11 500	11 200	14,0
15,0	30,7	10,1	11 100	10 800	10 500	10 200	15,0

REFERENCE ONLY

MLC100-1 S-1



B10



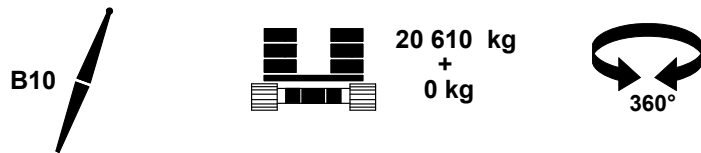
20 610 kg
+
0 kg



m	°	m	kg	kg	kg	kg	m
4,6	80,3	20,8	70 600				4,6
5,0	78,9	20,7	59 400	51 800			5,0
5,5	77,4	20,6	49 800	44 300	39 700	36 100	5,5
6,0	75,8	20,5	42 900	38 700	35 100	32 100	6,0
6,5	74,3	20,3	37 800	34 400	31 500	29 000	6,5
7,0	72,7	20,2	33 500	30 800	28 400	26 300	7,0
7,5	71,1	20,0	30 100	27 800	25 800	24 100	7,5
8,0	69,5	19,8	27 200	25 300	23 700	22 100	8,0
9,0	66,2	19,4	22 900	21 500	20 200	19 100	9,0
10,0	62,8	18,9	19 600	18 600	17 600	16 700	10,0
11,0	59,4	18,3	17 100	16 300	15 500	14 800	11,0
12,0	55,8	17,7	15 100	14 500	13 800	13 200	12,0
13,0	52,0	16,9	13 500	13 000	12 400	12 000	13,0
14,0	48,0	16,1	12 100	11 700	11 300	10 900	14,0
15,0	43,8	15,1	11 000	10 600	10 300	9 900	15,0
16,0	39,1	13,9	10 100	9 800	9 500	9 200	16,0
17,0	34,0	12,5	9 200	9 000	8 700	8 500	17,0
18,0	28,0	10,8	8 500	8 300	8 100	7 900	18,0

REFERENCE ONLY

MLC100-1 S-1



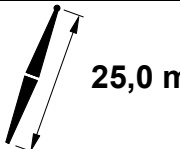
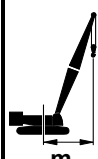


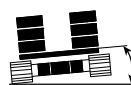
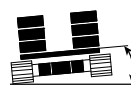
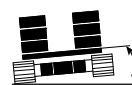
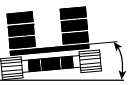

22,0 m							
m	°	m	0° kg	1° kg	2° kg	3° kg	m
4,9	80,8	23,8	62 300				4,9
5,0	80,5	23,8	59 600				5,0
5,5	79,1	23,7	50 000	43 800			5,5
6,0	77,8	23,6	43 100	38 300	34 400		6,0
6,5	76,5	23,5	37 900	34 100	30 900	28 200	6,5
7,0	75,1	23,3	33 700	30 600	28 000	25 700	7,0
7,5	73,8	23,2	30 200	27 700	25 500	23 500	7,5
8,0	72,4	23,0	27 400	25 200	23 400	21 700	8,0
9,0	69,6	22,7	23 000	21 400	20 000	18 800	9,0
10,0	66,8	22,3	19 800	18 600	17 500	16 500	10,0
11,0	64,0	21,8	17 200	16 300	15 400	14 600	11,0
12,0	61,0	21,3	15 300	14 500	13 800	13 100	12,0
13,0	58,0	20,6	13 600	13 000	12 400	11 900	13,0
14,0	54,8	20,0	12 300	11 800	11 300	10 800	14,0
15,0	51,5	19,2	11 200	10 700	10 300	9 900	15,0
16,0	48,1	18,3	10 200	9 800	9 500	9 100	16,0
17,0	44,4	17,4	9 400	9 000	8 700	8 400	17,0
18,0	40,5	16,2	8 600	8 300	8 100	7 800	18,0
19,0	36,3	15,0	8 000	7 700	7 500	7 300	19,0
20,0	31,6	13,4	7 400	7 200	7 000	6 800	20,0
21,0	26,0	11,6	6 900	6 700	6 500	6 400	21,0

MLC100-1 S-1

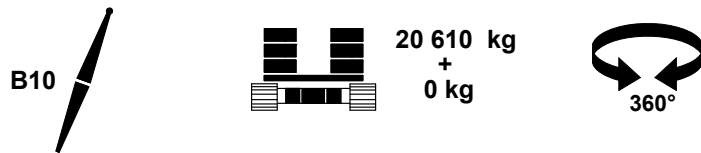



20 610 kg
+ 0 kg



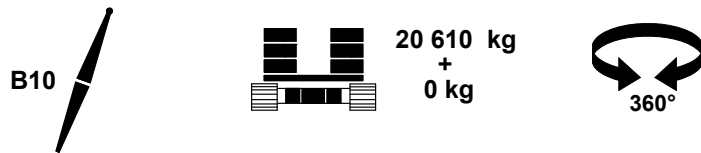
							
 m	 °	 m	 0° kg	 1° kg	 2° kg	 3° kg	 m
5,5	80,5	26,7	50 200				5,5
6,0	79,3	26,6	43 100	37 800			6,0
6,5	78,1	26,5	37 900	33 700			6,5
7,0	76,9	26,4	33 700	30 200	27 300	24 900	7,0
7,5	75,8	26,3	30 200	27 400	24 900	22 800	7,5
8,0	74,6	26,1	27 300	24 900	22 900	21 100	8,0
9,0	72,2	25,8	23 000	21 200	19 600	18 300	9,0
10,0	69,7	25,5	19 700	18 400	17 100	16 000	10,0
11,0	67,3	25,1	17 200	16 100	15 100	14 300	11,0
12,0	64,7	24,6	15 200	14 300	13 500	12 800	12,0
13,0	62,2	24,1	13 600	12 900	12 200	11 600	13,0
14,0	59,5	23,5	12 200	11 600	11 100	10 500	14,0
15,0	56,8	22,9	11 100	10 600	10 100	9 600	15,0
16,0	54,0	22,2	10 100	9 700	9 300	8 900	16,0
17,0	51,1	21,4	9 300	8 900	8 500	8 200	17,0
18,0	48,1	20,6	8 500	8 200	7 900	7 600	18,0
19,0	44,9	19,6	7 900	7 600	7 300	7 100	19,0
20,0	41,5	18,5	7 300	7 100	6 800	6 600	20,0
21,0	37,9	17,3	6 800	6 600	6 400	6 200	21,0
22,0	33,9	15,9	6 300	6 100	6 000	5 800	22,0
23,0	29,5	14,2	5 900	5 700	5 600	5 400	23,0
24,0	24,3	12,2	5 500	5 400	5 300	5 100	24,0

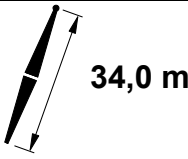
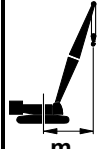


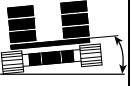
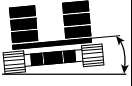
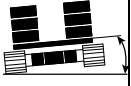


MLC100-1 S-1



28,0 m								
m	°	m	0° kg	1° kg	2° kg	3° kg	m	
5,8	80,9	29,7	45 700				5,8	
6,0	80,5	29,7	43 100				6,0	
6,5	79,4	29,6	37 900				6,5	
7,0	78,4	29,5	33 600	29 900	26 800		7,0	
7,5	77,3	29,4	30 200	27 100	24 400	22 200	7,5	
8,0	76,3	29,3	27 300	24 700	22 500	20 500	8,0	
9,0	74,2	29,0	22 900	21 000	19 300	17 800	9,0	
10,0	72,0	28,7	19 700	18 200	16 900	15 700	10,0	
11,0	69,8	28,3	17 200	16 000	14 900	14 000	11,0	
12,0	67,6	27,9	15 200	14 200	13 300	12 500	12,0	
13,0	65,4	27,5	13 500	12 800	12 000	11 400	13,0	
14,0	63,1	27,0	12 200	11 500	10 900	10 300	14,0	
15,0	60,8	26,5	11 100	10 500	10 000	9 500	15,0	
16,0	58,4	25,9	10 100	9 600	9 200	8 700	16,0	
17,0	56,0	25,2	9 300	8 800	8 400	8 100	17,0	
18,0	53,4	24,5	8 500	8 200	7 800	7 500	18,0	
19,0	50,8	23,7	7 900	7 600	7 200	7 000	19,0	
20,0	48,1	22,8	7 300	7 000	6 700	6 500	20,0	
21,0	45,3	21,9	6 800	6 500	6 300	6 100	21,0	
22,0	42,3	20,8	6 300	6 100	5 900	5 700	22,0	
23,0	39,1	19,6	5 900	5 700	5 500	5 300	23,0	
24,0	35,7	18,3	5 500	5 300	5 200	5 000	24,0	
25,0	32,0	16,8	5 200	5 000	4 900	4 700	25,0	
26,0	27,9	15,0	4 800	4 700	4 600	4 400	26,0	
27,0	23,0	12,8	4 500	4 400	4 300	4 200	27,0	

MLC100-1 S-1

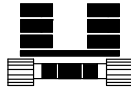


 34,0 m								
 m	 °	 m	 0° kg	 1° kg	 2° kg	 3° kg	 m	
6,7	80,9	35,7	35 800				6,7	
7,0	80,4	35,6	33 500				7,0	
7,5	79,6	35,5	30 100	26 400			7,5	
8,0	78,7	35,4	27 200	24 100	21 600		8,0	
9,0	77,0	35,2	22 800	20 500	18 600	16 900	9,0	
10,0	75,3	34,9	19 600	17 800	16 300	14 900	10,0	
11,0	73,5	34,6	17 000	15 600	14 400	13 300	11,0	
12,0	71,7	34,3	15 000	13 900	12 900	12 000	12,0	
13,0	69,9	34,0	13 400	12 400	11 600	10 800	13,0	
14,0	68,1	33,6	12 000	11 200	10 500	9 800	14,0	
15,0	66,3	33,1	10 900	10 200	9 600	9 000	15,0	
16,0	64,4	32,7	10 000	9 400	8 800	8 300	16,0	
17,0	62,5	32,2	9 100	8 600	8 100	7 700	17,0	
18,0	60,6	31,6	8 400	7 900	7 500	7 100	18,0	
19,0	58,7	31,0	7 700	7 300	6 900	6 600	19,0	
20,0	56,7	30,4	7 100	6 800	6 400	6 100	20,0	
21,0	54,6	29,7	6 600	6 300	6 000	5 700	21,0	
22,0	52,5	28,9	6 200	5 900	5 600	5 300	22,0	
23,0	50,3	28,1	5 700	5 500	5 200	5 000	23,0	
24,0	48,1	27,3	5 300	5 100	4 900	4 700	24,0	
25,0	45,8	26,3	5 000	4 800	4 600	4 400	25,0	
26,0	43,3	25,3	4 700	4 500	4 300	4 100	26,0	
27,0	40,8	24,2	4 400	4 200	4 100	3 900	27,0	
28,0	38,1	22,9	4 100	4 000	3 800	3 700	28,0	
29,0	35,3	21,6	3 900	3 700	3 600	3 500	29,0	
30,0	32,2	20,0	3 600	3 500	3 400	3 300	30,0	
31,0	28,9	18,3	3 400	3 300	3 200	3 100	31,0	
32,0	25,1	16,3	3 200	3 100	3 000	2 900	32,0	

MLC100-1 S-1



B10



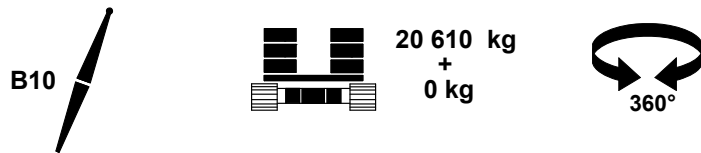
20 610 kg
+
0 kg

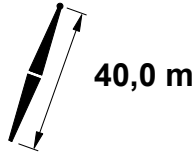



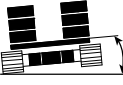
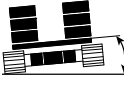
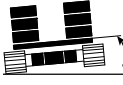




360°

m	°	m	kg	kg	kg	kg	m
7,3	80,7	38,6	31 100				7,3
7,5	80,4	38,6	30 000				7,5
8,0	79,7	38,5	27 100	23 800			8,0
9,0	78,1	38,3	22 800	20 300	18 200		9,0
10,0	76,5	38,0	19 500	17 600	15 900	14 500	10,0
11,0	74,9	37,8	16 900	15 400	14 100	13 000	11,0
12,0	73,3	37,5	14 900	13 700	12 600	11 700	12,0
13,0	71,6	37,2	13 300	12 300	11 400	10 500	13,0
14,0	70,0	36,8	11 900	11 100	10 300	9 600	14,0
15,0	68,3	36,4	10 800	10 100	9 400	8 800	15,0
16,0	66,7	36,0	9 900	9 200	8 600	8 100	16,0
17,0	65,0	35,5	9 000	8 400	7 900	7 400	17,0
18,0	63,2	35,0	8 300	7 800	7 300	6 900	18,0
19,0	61,5	34,5	7 600	7 200	6 800	6 400	19,0
20,0	59,7	33,9	7 000	6 600	6 300	5 900	20,0
21,0	57,9	33,3	6 500	6 200	5 800	5 500	21,0
22,0	56,0	32,7	6 000	5 700	5 400	5 200	22,0
23,0	54,1	32,0	5 600	5 300	5 100	4 800	23,0
24,0	52,2	31,2	5 200	5 000	4 700	4 500	24,0
25,0	50,2	30,4	4 900	4 700	4 400	4 200	25,0
26,0	48,1	29,5	4 600	4 400	4 200	4 000	26,0
27,0	46,0	28,6	4 300	4 100	3 900	3 700	27,0
28,0	43,8	27,6	4 000	3 800	3 700	3 500	28,0
29,0	41,5	26,5	3 800	3 600	3 400	3 300	29,0
30,0	39,1	25,3	3 500	3 400	3 200	3 100	30,0
31,0	36,5	24,0	3 300	3 200	3 000	2 900	31,0
32,0	33,8	22,5	3 100	3 000	2 900	2 700	32,0
33,0	30,9	20,9	2 900	2 800	2 700	2 600	33,0
34,0	27,7	19,1	2 700	2 600	2 500	2 400	34,0
35,0	24,1	17,0	2 600	2 500	2 400	2 300	35,0

MLC100-1 S-1

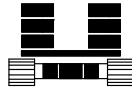


								
								
m	°	m	kg	kg	kg	kg	m	
7,9	80,6	41,5	27 400				7,9	
8,0	80,4	41,5	27 100				8,0	
9,0	79,0	41,3	22 700	20 000			9,0	
10,0	77,5	41,1	19 400	17 400	15 700	14 200	10,0	
11,0	76,0	40,9	16 900	15 200	13 900	12 700	11,0	
12,0	74,6	40,6	14 900	13 600	12 400	11 400	12,0	
13,0	73,1	40,3	13 200	12 100	11 200	10 300	13,0	
14,0	71,6	40,0	11 900	11 000	10 100	9 400	14,0	
15,0	70,0	39,6	10 700	9 900	9 200	8 600	15,0	
16,0	68,5	39,2	9 800	9 100	8 500	7 900	16,0	
17,0	66,9	38,8	8 900	8 300	7 800	7 300	17,0	
18,0	65,4	38,4	8 200	7 700	7 200	6 700	18,0	
19,0	63,8	37,9	7 500	7 100	6 600	6 200	19,0	
20,0	62,2	37,4	7 000	6 500	6 200	5 800	20,0	
21,0	60,5	36,8	6 400	6 100	5 700	5 400	21,0	
22,0	58,9	36,2	6 000	5 600	5 300	5 000	22,0	
23,0	57,2	35,6	5 600	5 300	5 000	4 700	23,0	
24,0	55,4	34,9	5 200	4 900	4 600	4 400	24,0	
25,0	53,7	34,2	4 800	4 600	4 300	4 100	25,0	
26,0	51,9	33,4	4 500	4 300	4 100	3 900	26,0	
27,0	50,0	32,6	4 200	4 000	3 800	3 600	27,0	
28,0	48,1	31,7	3 900	3 800	3 600	3 400	28,0	
29,0	46,1	30,8	3 700	3 500	3 300	3 200	29,0	
30,0	44,1	29,8	3 500	3 300	3 100	3 000	30,0	
31,0	42,0	28,7	3 200	3 100	3 000	2 800	31,0	
32,0	39,8	27,5	3 000	2 900	2 800	2 600	32,0	
33,0	37,5	26,3	2 900	2 700	2 600	2 500	33,0	
34,0	35,0	24,9	2 700	2 600	2 400	2 300	34,0	
35,0	32,4	23,4	2 500	2 400	2 300	2 200	35,0	
36,0	29,6	21,7	2 400	2 300	2 200	2 100	36,0	
37,0	26,6	19,8	2 200	2 100	2 000	1 900	37,0	
38,0	23,1	17,6	2 100	2 000	1 900	1 800	38,0	

MLC100-1 S-1



B10

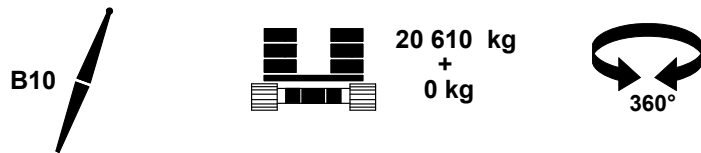


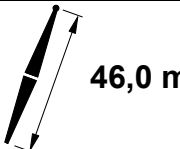
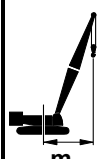


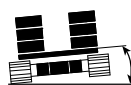
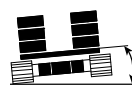
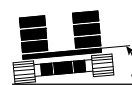
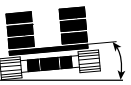
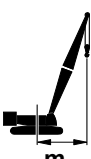
20 610 kg
+
0 kg



m	°	m	0° kg	1° kg	2° kg	3° kg	m	
8,5	80,4	44,5	24 500				8,5	
9,0	79,8	44,4	22 600				9,0	
10,0	78,4	44,2	19 300	17 200	15 400		10,0	
11,0	77,0	44,0	16 800	15 100	13 600	12 300	11,0	
12,0	75,7	43,7	14 800	13 400	12 200	11 100	12,0	
13,0	74,3	43,5	13 200	12 000	11 000	10 100	13,0	
14,0	72,9	43,2	11 800	10 800	9 900	9 100	14,0	
15,0	71,5	42,8	10 600	9 800	9 000	8 400	15,0	
16,0	70,1	42,5	9 700	9 000	8 300	7 700	16,0	
17,0	68,7	42,1	8 800	8 200	7 600	7 100	17,0	
18,0	67,2	41,7	8 100	7 500	7 000	6 500	18,0	
19,0	65,8	41,2	7 400	6 900	6 500	6 100	19,0	
20,0	64,3	40,8	6 900	6 400	6 000	5 600	20,0	
21,0	62,8	40,3	6 300	5 900	5 600	5 200	21,0	
22,0	61,3	39,7	5 900	5 500	5 200	4 900	22,0	
23,0	59,7	39,1	5 500	5 100	4 800	4 500	23,0	
24,0	58,2	38,5	5 100	4 800	4 500	4 200	24,0	
25,0	56,6	37,9	4 700	4 500	4 200	4 000	25,0	
26,0	55,0	37,2	4 400	4 200	3 900	3 700	26,0	
27,0	53,3	36,5	4 100	3 900	3 700	3 500	27,0	
28,0	51,6	35,7	3 800	3 600	3 400	3 200	28,0	
29,0	49,9	34,9	3 600	3 400	3 200	3 000	29,0	
30,0	48,1	34,0	3 400	3 200	3 000	2 800	30,0	
31,0	46,3	33,1	3 100	3 000	2 800	2 700	31,0	
32,0	44,4	32,1	2 900	2 800	2 600	2 500	32,0	
33,0	42,5	31,0	2 700	2 600	2 500	2 300	33,0	
34,0	40,5	29,8	2 600	2 400	2 300	2 200	34,0	
35,0	38,3	28,6	2 400	2 300	2 200	2 100	35,0	
36,0	36,1	27,3	2 200	2 100	2 000	1 900	36,0	
37,0	33,8	25,8	2 100	2 000	1 900		37,0	
38,0	31,3	24,3	2 000	1 900	1 800		38,0	
39,0	28,6	22,5	1 800				39,0	

MLC100-1 S-1

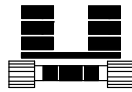


 46,0 m							
 m	 °	 m	 0° kg	 1° kg	 2° kg	 3° kg	 m
9,1	80,3	47,4	22 000				9,1
10,0	79,2	47,2	19 300	17 000			10,0
11,0	77,9	47,0	16 700	14 900	13 300	12 100	11,0
12,0	76,6	46,8	14 700	13 200	11 900	10 800	12,0
13,0	75,3	46,6	13 100	11 800	10 700	9 800	13,0
14,0	74,0	46,3	11 700	10 600	9 700	8 900	14,0
15,0	72,7	46,0	10 600	9 700	8 900	8 100	15,0
16,0	71,4	45,6	9 600	8 800	8 100	7 500	16,0
17,0	70,1	45,3	8 700	8 100	7 400	6 900	17,0
18,0	68,8	44,9	8 000	7 400	6 900	6 400	18,0
19,0	67,4	44,5	7 400	6 800	6 300	5 900	19,0
20,0	66,1	44,1	6 800	6 300	5 900	5 400	20,0
21,0	64,7	43,6	6 300	5 800	5 400	5 100	21,0
22,0	63,3	43,1	5 800	5 400	5 000	4 700	22,0
23,0	61,9	42,6	5 400	5 000	4 700	4 400	23,0
24,0	60,5	42,0	5 000	4 700	4 400	4 100	24,0
25,0	59,0	41,4	4 600	4 300	4 100	3 800	25,0
26,0	57,6	40,8	4 300	4 000	3 800	3 600	26,0
27,0	56,1	40,1	4 000	3 800	3 500	3 300	27,0
28,0	54,5	39,4	3 700	3 500	3 300	3 100	28,0
29,0	53,0	38,7	3 500	3 300	3 100	2 900	29,0
30,0	51,4	37,9	3 300	3 100	2 900	2 700	30,0
31,0	49,8	37,1	3 000	2 900	2 700	2 500	31,0
32,0	48,1	36,2	2 800	2 700	2 500	2 400	32,0
33,0	46,4	35,3	2 700	2 500	2 400	2 200	33,0
34,0	44,7	34,3	2 500	2 300	2 200	2 100	34,0
35,0	42,9	33,2	2 300	2 200	2 000	1 900	35,0
36,0	41,0	32,1	2 200	2 000	1 900	1 800	36,0
37,0	39,0	30,9	2 000	1 900			37,0
38,0	37,0	29,6	1 900	1 800			38,0

MLC100-1 S-1



B10



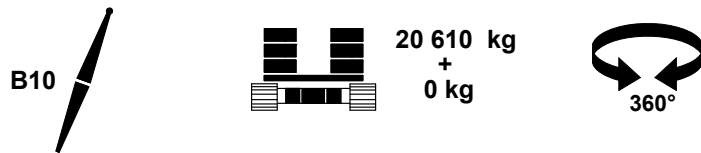
20 610 kg
+
0 kg



360°

m	°	m	kg	kg	kg	kg	kg	m
9,1	80,9	50,5	21 900					9,1
10,0	79,8	50,3	19 200					10,0
11,0	78,7	50,1	16 600	14 700	13 100			11,0
12,0	77,5	49,9	14 600	13 000	11 700	10 600		12,0
13,0	76,3	49,7	13 000	11 700	10 500	9 500		13,0
14,0	75,0	49,4	11 600	10 500	9 500	8 700		14,0
15,0	73,8	49,1	10 500	9 500	8 700	7 900		15,0
16,0	72,6	48,8	9 500	8 700	7 900	7 300		16,0
17,0	71,4	48,5	8 600	7 900	7 300	6 700		17,0
18,0	70,1	48,1	7 900	7 300	6 700	6 200		18,0
19,0	68,9	47,8	7 300	6 700	6 200	5 700		19,0
20,0	67,6	47,3	6 700	6 200	5 700	5 300		20,0
21,0	66,4	46,9	6 100	5 700	5 300	4 900		21,0
22,0	65,1	46,5	5 700	5 300	4 900	4 500		22,0
23,0	63,8	46,0	5 300	4 900	4 500	4 200		23,0
24,0	62,5	45,5	4 900	4 500	4 200	3 900		24,0
25,0	61,1	44,9	4 500	4 200	3 900	3 700		25,0
26,0	59,8	44,3	4 200	3 900	3 600	3 400		26,0
27,0	58,4	43,7	3 900	3 600	3 400	3 200		27,0
28,0	57,0	43,1	3 600	3 400	3 200	3 000		28,0
29,0	55,6	42,4	3 400	3 200	2 900	2 700		29,0
30,0	54,2	41,7	3 200	2 900	2 700	2 600		30,0
31,0	52,7	41,0	2 900	2 700	2 600	2 400		31,0
32,0	51,2	40,2	2 700	2 600	2 400	2 200		32,0
33,0	49,7	39,3	2 500	2 400	2 200	2 100		33,0
34,0	48,1	38,5	2 400	2 200	2 100	1 900		34,0
35,0	46,6	37,5	2 200	2 100	1 900	1 800		35,0
36,0	44,9	36,6	2 000	1 900	1 800			36,0
37,0	43,2	35,5	1 900					37,0
38,0	41,5	34,4	1 700					38,0

MLC100-1 S-1

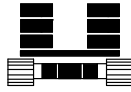


52,0 m							
m	°	m	0° kg	1° kg	2° kg	3° kg	m
9,8	80,7	53,4	19 800				9,8
10,0	80,4	53,4	19 100				10,0
11,0	79,3	53,2	16 500	14 600			11,0
12,0	78,2	53,0	14 500	12 900	11 500		12,0
13,0	77,1	52,7	12 900	11 500	10 300	9 300	13,0
14,0	75,9	52,5	11 500	10 300	9 300	8 500	14,0
15,0	74,8	52,2	10 400	9 400	8 500	7 700	15,0
16,0	73,6	51,9	9 400	8 600	7 800	7 100	16,0
17,0	72,5	51,6	8 600	7 800	7 100	6 500	17,0
18,0	71,3	51,3	7 800	7 100	6 500	6 000	18,0
19,0	70,2	50,9	7 200	6 600	6 000	5 500	19,0
20,0	69,0	50,6	6 600	6 000	5 600	5 100	20,0
21,0	67,8	50,2	6 100	5 600	5 100	4 700	21,0
22,0	66,6	49,7	5 600	5 200	4 800	4 400	22,0
23,0	65,4	49,3	5 200	4 800	4 400	4 100	23,0
24,0	64,2	48,8	4 800	4 400	4 100	3 800	24,0
25,0	62,9	48,3	4 400	4 100	3 800	3 500	25,0
26,0	61,7	47,8	4 100	3 800	3 500	3 300	26,0
27,0	60,4	47,2	3 800	3 600	3 300	3 000	27,0
28,0	59,1	46,6	3 600	3 300	3 100	2 800	28,0
29,0	57,8	46,0	3 300	3 100	2 800	2 600	29,0
30,0	56,5	45,4	3 100	2 900	2 600	2 400	30,0
31,0	55,2	44,7	2 900	2 700	2 500	2 300	31,0
32,0	53,8	44,0	2 600	2 500	2 300	2 100	32,0
33,0	52,5	43,2	2 500	2 300	2 100	2 000	33,0
34,0	51,0	42,4	2 300	2 100	2 000		34,0
35,0	49,6	41,6	2 100	2 000	1 800		35,0
36,0	48,1	40,7	2 000	1 800			36,0

MLC100-1 S-1



B10



20 610 kg
+
0 kg



360°

m	°	m	0° kg	1° kg	2° kg	3° kg	m	
10,4	80,6	56,3	18 000				10,4	
11,0	79,9	56,2	16 400	14 400			11,0	
12,0	78,8	56,0	14 400	12 700			12,0	
13,0	77,8	55,8	12 800	11 300	10 100	9 100	13,0	
14,0	76,7	55,6	11 400	10 200	9 100	8 200	14,0	
15,0	75,6	55,3	10 300	9 200	8 300	7 500	15,0	
16,0	74,5	55,1	9 300	8 400	7 600	6 900	16,0	
17,0	73,5	54,8	8 500	7 700	6 900	6 300	17,0	
18,0	72,4	54,4	7 700	7 000	6 400	5 800	18,0	
19,0	71,3	54,1	7 100	6 400	5 900	5 400	19,0	
20,0	70,2	53,8	6 500	5 900	5 400	4 900	20,0	
21,0	69,1	53,4	6 000	5 500	5 000	4 600	21,0	
22,0	67,9	53,0	5 500	5 000	4 600	4 200	22,0	
23,0	66,8	52,6	5 100	4 600	4 300	3 900	23,0	
24,0	65,7	52,1	4 700	4 300	4 000	3 600	24,0	
25,0	64,5	51,6	4 300	4 000	3 700	3 400	25,0	
26,0	63,3	51,2	4 000	3 700	3 400	3 100	26,0	
27,0	62,2	50,6	3 700	3 400	3 200	2 900	27,0	
28,0	61,0	50,1	3 400	3 200	2 900	2 700	28,0	
29,0	59,8	49,5	3 200	2 900	2 700	2 500	29,0	
30,0	58,6	48,9	3 000	2 700	2 500	2 300	30,0	
31,0	57,3	48,3	2 700	2 500	2 300	2 100	31,0	
32,0	56,1	47,6	2 500	2 300	2 100	2 000	32,0	
33,0	54,8	46,9	2 400	2 200	2 000	1 800	33,0	
34,0	53,5	46,2	2 200	2 000			34,0	
35,0	52,2	45,4	2 000	1 800			35,0	
36,0	50,9	44,6	1 800				36,0	