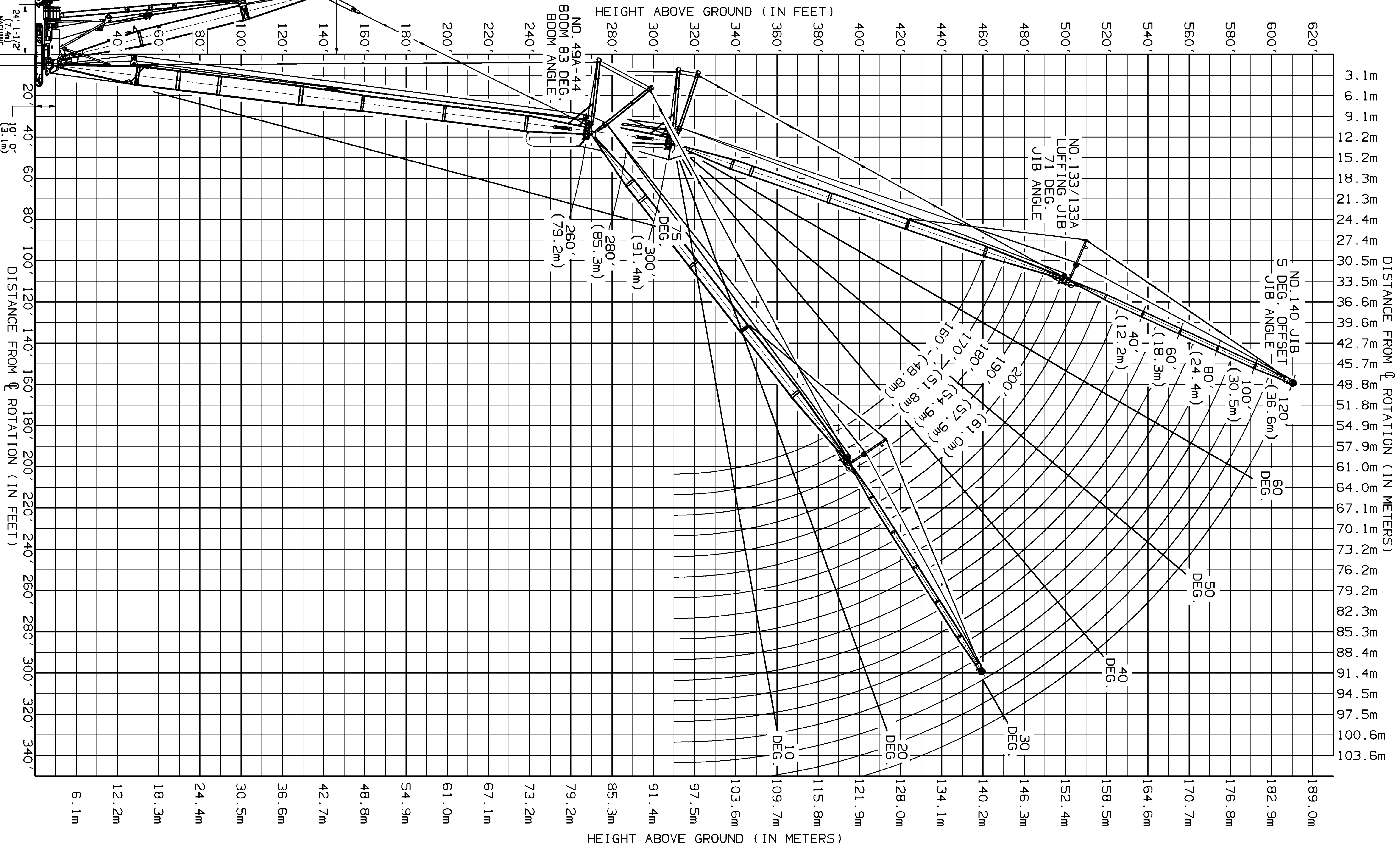
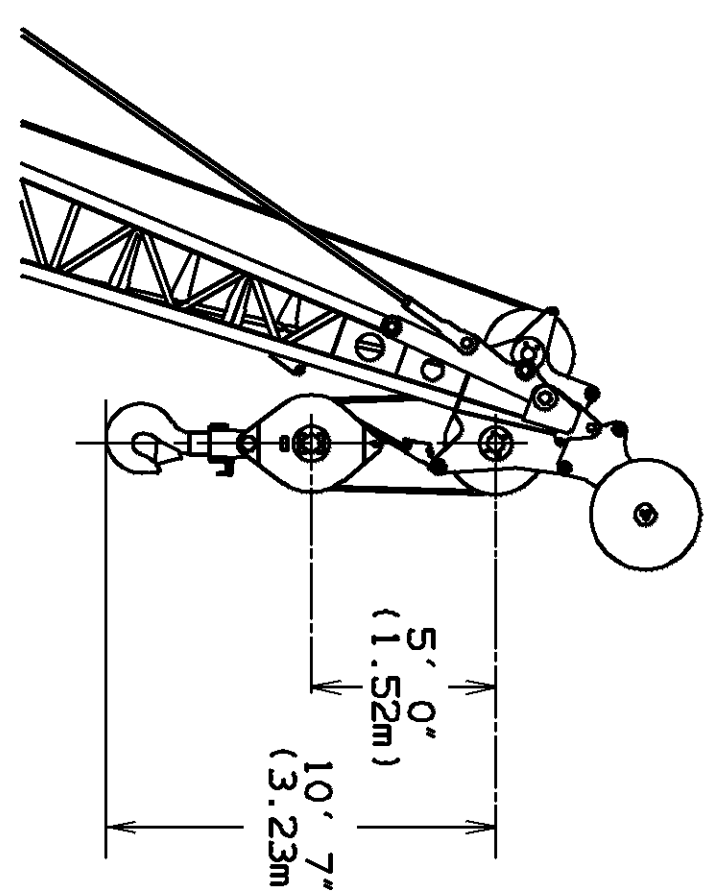
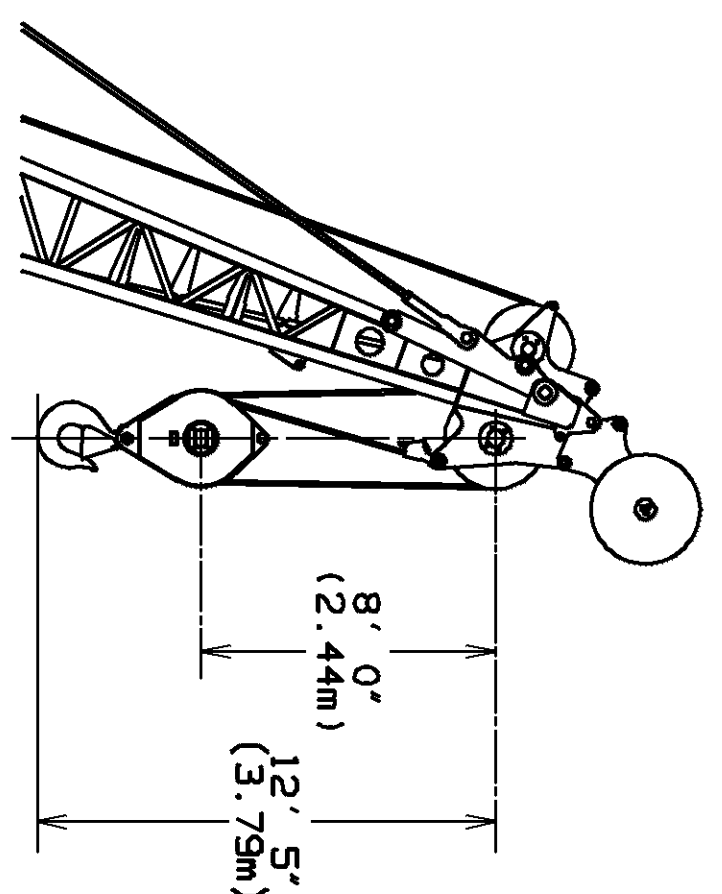
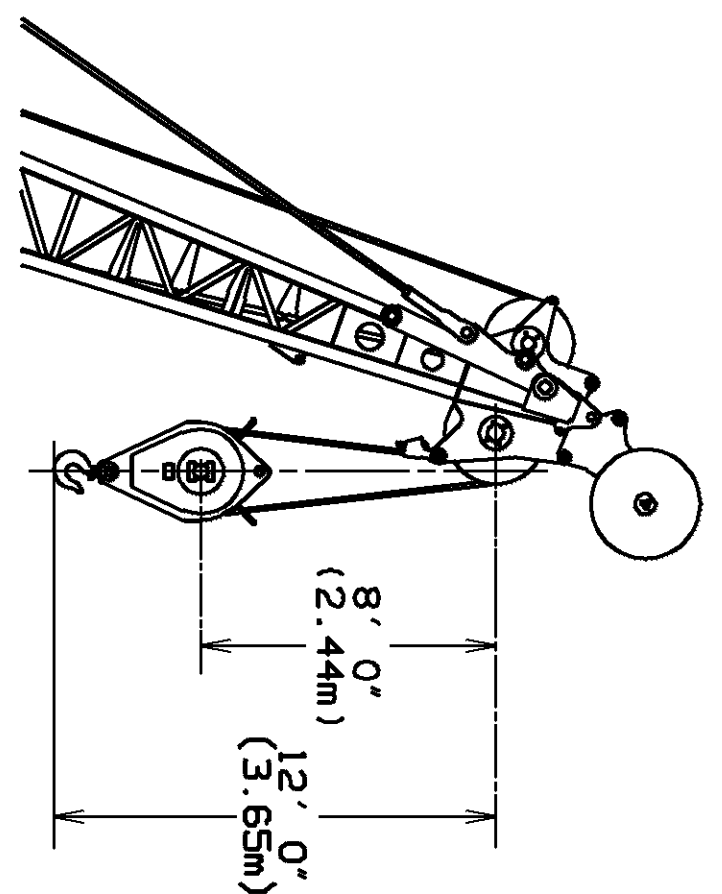
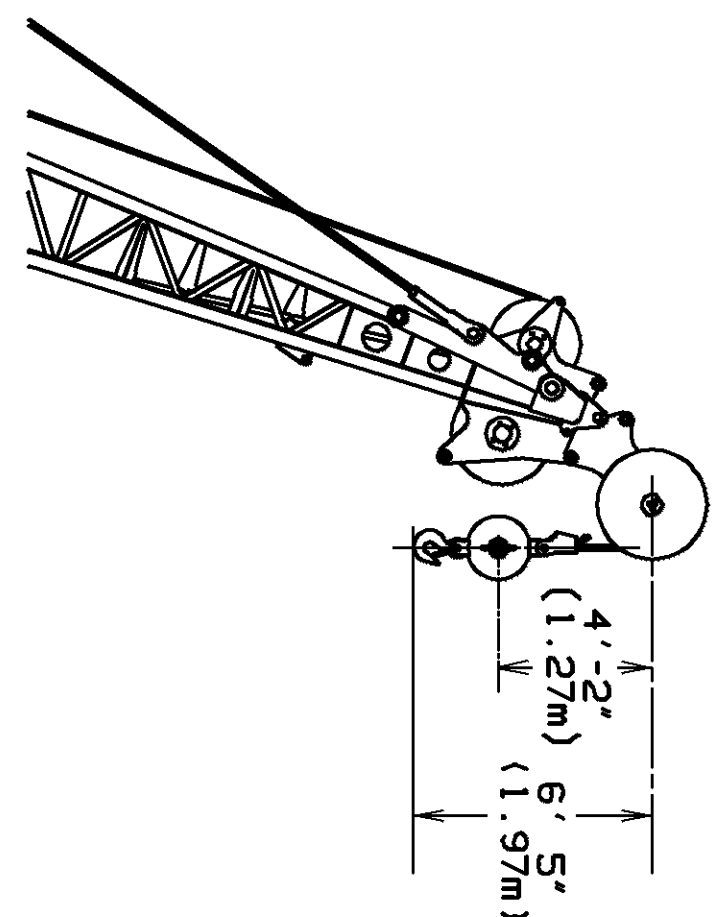


- NOTE 1: THIS DRAWING IS INTENDED ONLY AS A GUIDE TO ASSIST IN JOB PLANNING.
- NOTE 2: FOR PLANNING A LIFT, THIS DRAWING IS TO BE USED IN CONJUNCTION WITH APPROPRIATE CAPACITY CHARTS, RANGE CHART, WIRE ROPE SPECIFICATIONS, RIGGING DRAWING, AND OUTLINE DIMENSIONS.
- NOTE 3: FOR PLANNING LIFTS WHERE CLEARANCES ARE LIMITED AND ACCURACY IS DESIRED, A DETAILED LAYOUT SHOULD BE PREPARED.
- NOTE 4: WHEN EQUIPPED WITH BLOCK-UP LIMIT CONTROL, LOAD BLOCK TO BOOM POINT/JIB POINT MINIMUM DISTANCE MAY BE MORE THAN INDICATED. SEE OPERATOR'S MANUAL FOR "BLOCK-UP LIMIT CONTROL".
- NOTE 5: MAXIMUM BOOM ANGLE 83 DEGREES FOR NO. 49A-44 BOOM WITH HEAVY LIFT TOP.

DATE 06-07-95	REVISED 3/8/95	MANUFACTURER Merrill Lynch, Inc.	DIAGRAM - RANGE ASSEMBLY	REVISION 03-25-99	NVS
DRAWING NO. 177070	REVISED 1/7/95	MODEL NO. M-250, 2250	NO. 133 OR 133A LUFFING JIB		
		MAX-ER 225	HANGING & WHEELED CTMT.		



DATE	03-25-99	REVISED	NO. 49A-44 BOOM, NO. 133 OR NO. 140 JIB	REVISION
DRAWING NO.	177070	BY	MANITOWOC WISCONSIN	
SCALE	AS SHOWN	CHECKED BY	MANITOWOC WISCONSIN	
PROJECT	MAX-ER 225	APPROVED BY	HANGING & WHEELED CTWT.	



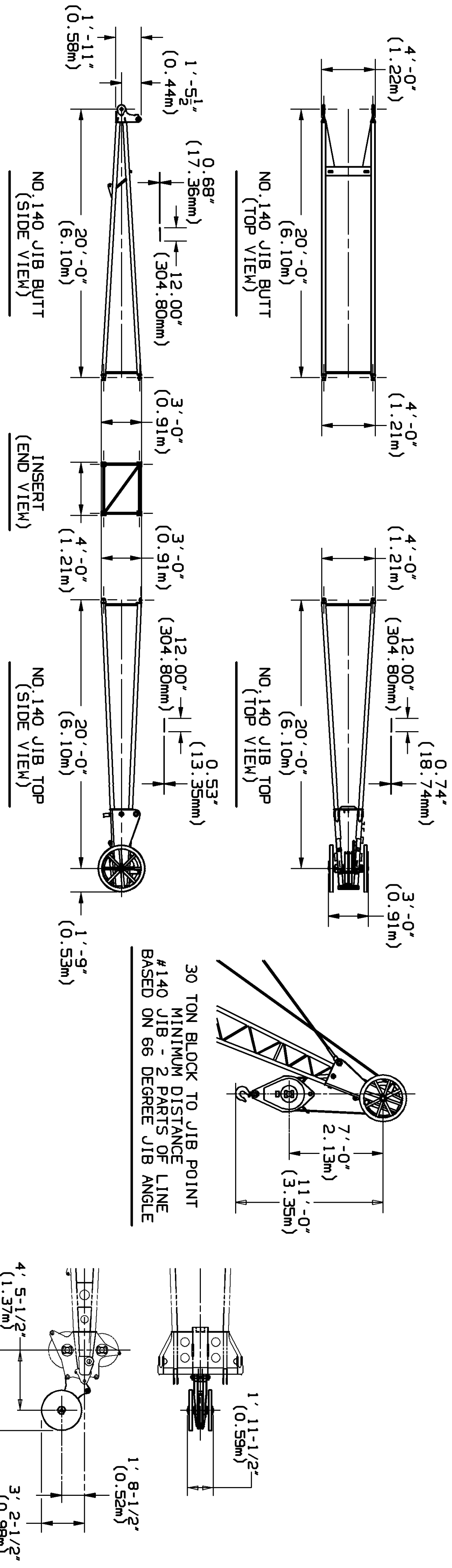
15 US TON (14 METRIC TON) BLOCK TO JIB POINT
 #133/133A JIB - 1 PART OF LINE

30 US TON (27 METRIC TON) BLOCK TO JIB POINT
 #133/133A JIB - 2 PARTS OF LINE

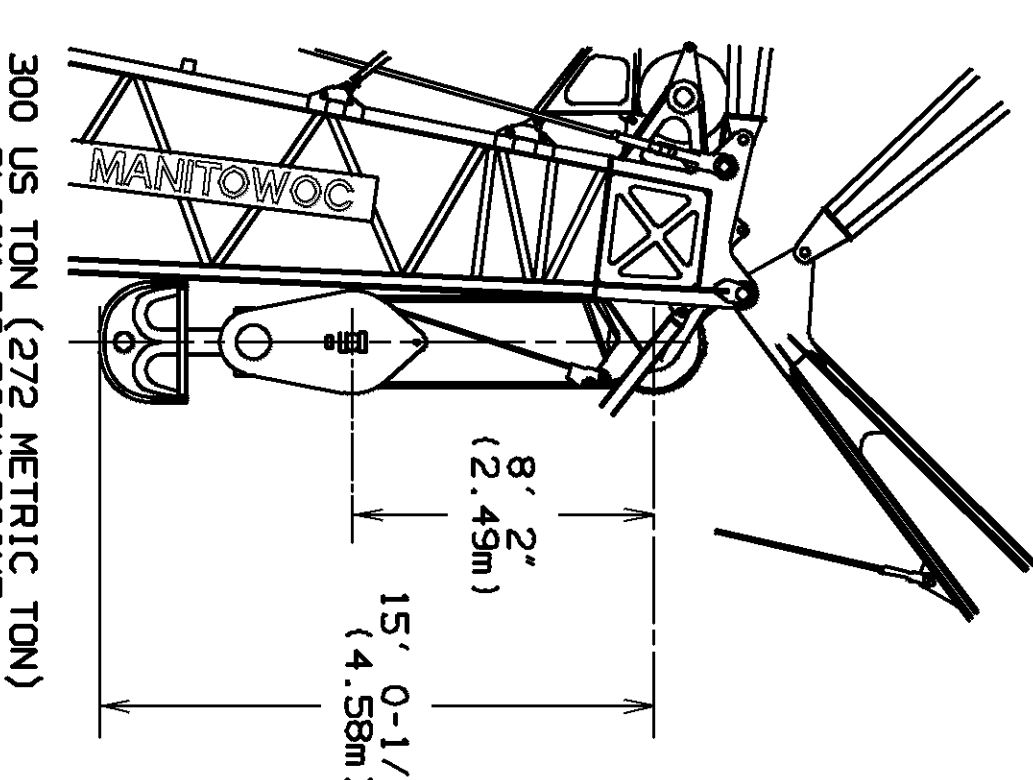
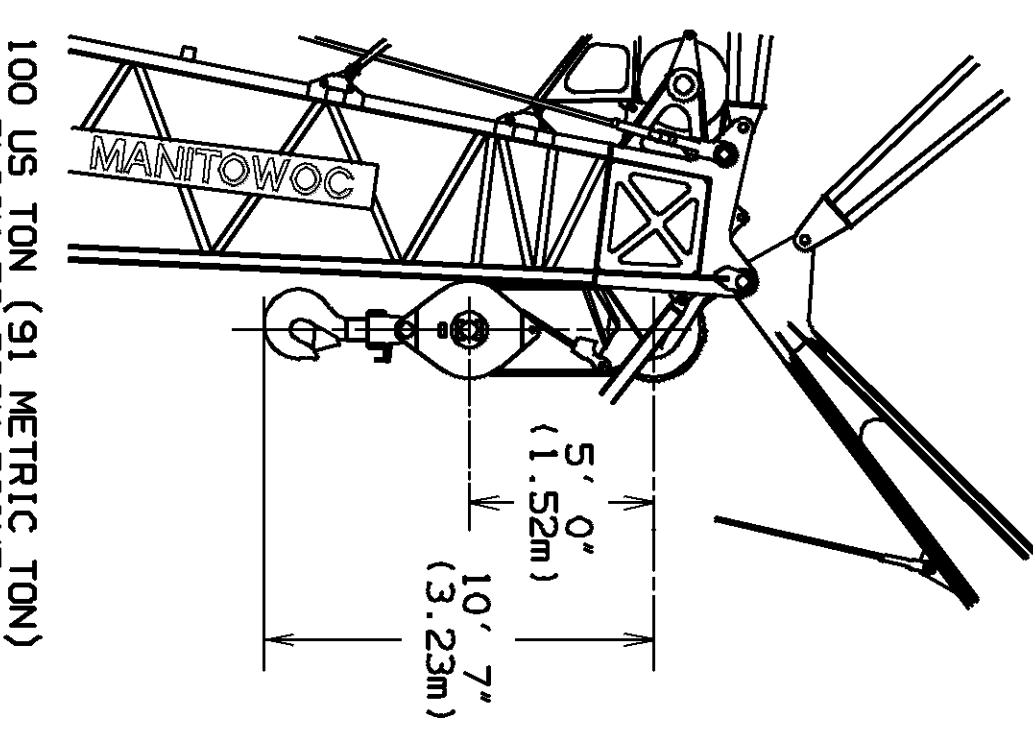
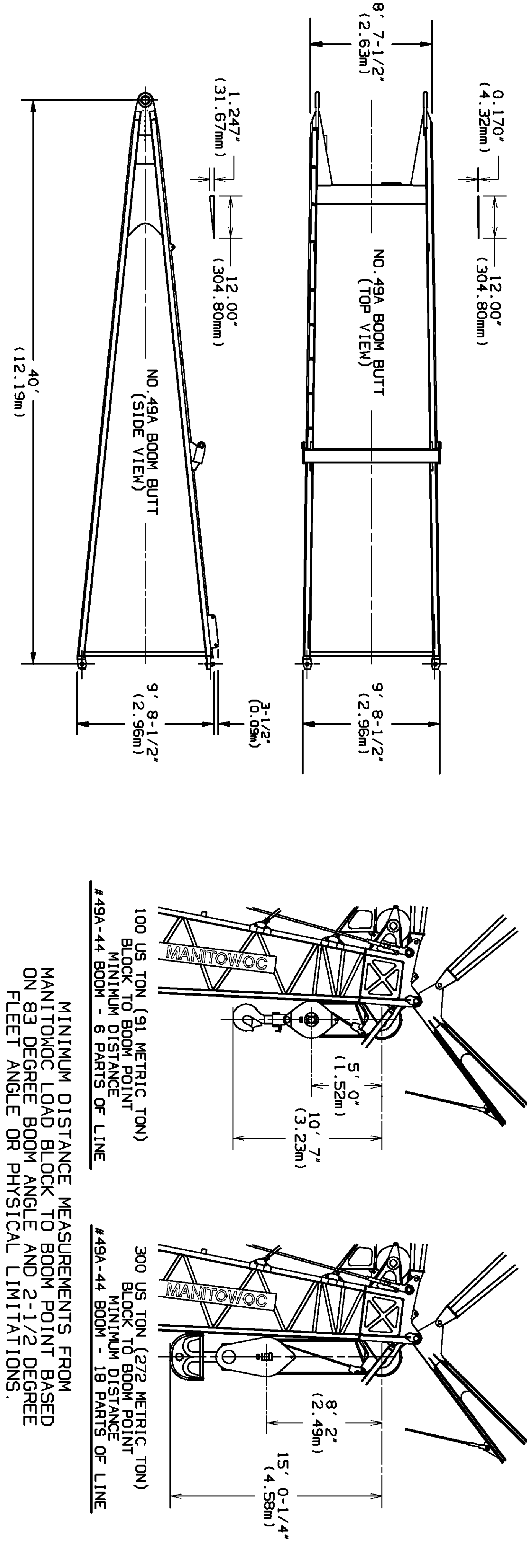
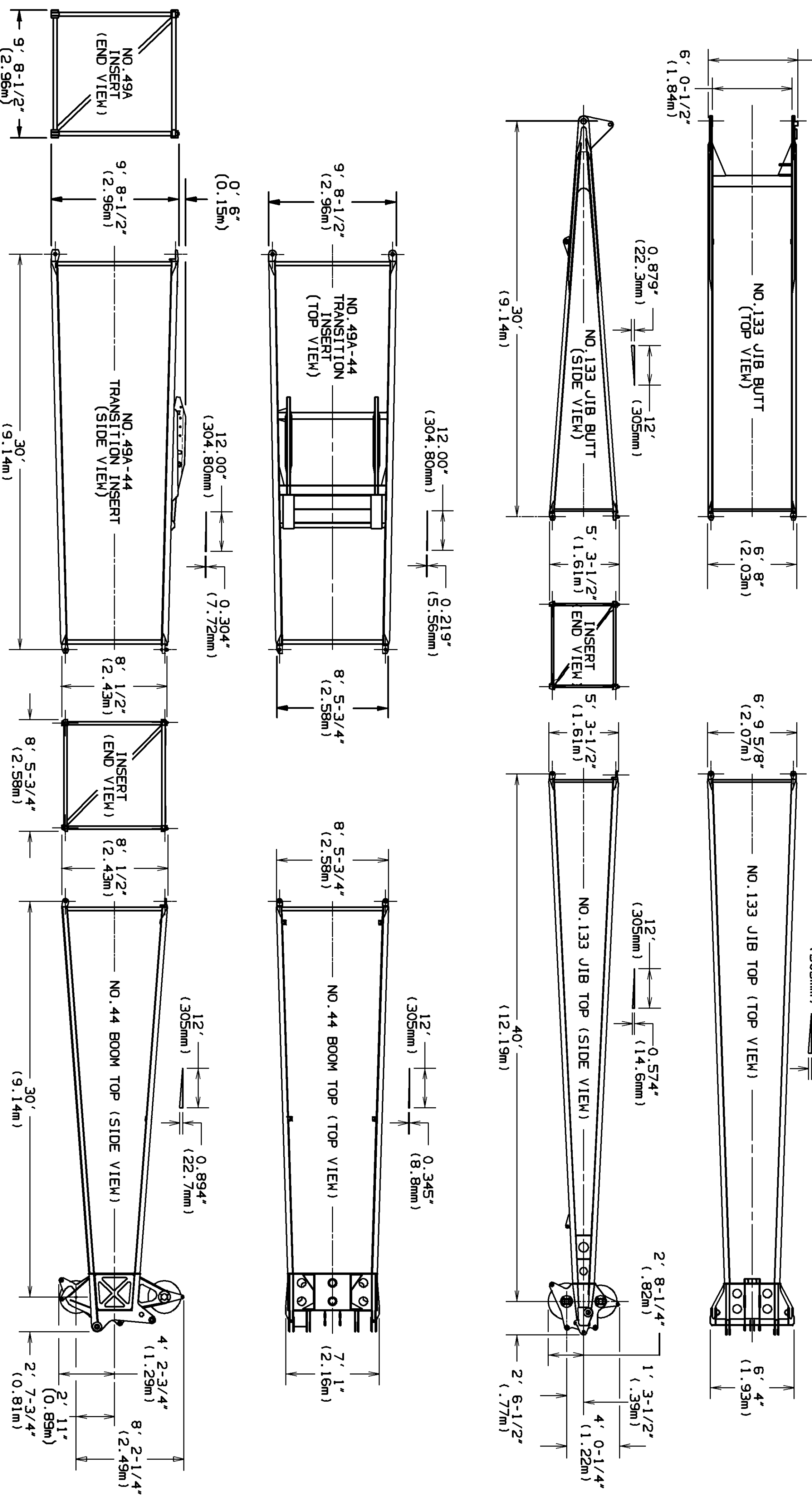
60 US TON (55 METRIC TON) BLOCK TO JIB POINT
 #133/133A JIB - 4 PARTS OF LINE

100 US TON (91 METRIC TON) BLOCK TO JIB POINT
 #133/133A JIB - 6 PARTS OF LINE

MINIMUM DISTANCE MEASUREMENTS FROM MANTOWOC LOAD BLOCK TO JIB POINT
 BASED ON 71 DEGREE JIB ANGLE AND 2-1/2 DEGREE FLEET ANGLE OR PHYSICAL LIMITATIONS.



NOTE: JIB NO. 133 (SHOWN) IS IDENTICAL TO JIB NO. 133A EXCEPT FOR THE JIB CONNECTORS. JIB NO. 133 HAS FACT CONNECTORS. JIB NO. 133A HAS STANDARD CONNECTORS.



MINIMUM DISTANCE MEASUREMENTS FROM MANTOWOC LOAD BLOCK TO BOOM POINT BASED ON 83 DEGREE BOOM ANGLE AND 2-1/2 DEGREE FLEET ANGLE OR PHYSICAL LIMITATIONS.

DATE	6-7-95	BY	NVS	REVISION	
DRAWING NO.	177070	MANUFACTURER	Mantowoc, Wisconsin		
REV	1	MODEL	M-250 MAX-ER 225		03-25-99 NVS
REV	2	REVISED BY	HANGING & WHEELED CTMT.		