

REQUIRED FOR VARIOUS JIB LENGTHS (A)

ITEM NO.	100	102	105	106	101	108	107	109	110	111
JIB LENGTH	INSERT 3.05 M (10 FT-0) ASSY	INSERT 6.10 M (20 FT-0) ASSY	PENDANT 2.89 M (9 FT-6.0)	PENDANT 5.79 M (19 FT-0)	PIN JIB JOINT	PIN COTTER	ELASTIC STOP NUT	BOLT	WASHER FLAT	TIMBER
METERS	FEET									
9.14	30	0	0	0	4	4	4	4	8	1
12.19	40	1	0	2	8	8	8	8	16	2
15.24	50	OR 2 0	0 1	4 0	12 8	12 8	12	12	24	3
18.29	60	OR 1 3	1 0	2 6	12 16	12 16	16	16	32	4
21.33	70	OR 2 2	1 1	4 2	12 16	12 16	20	20	40	5
24.38	80	OR 1 3	2 1	2 6	16 20	16 20	24	24	48	6

REQUIRED FOR VARIOUS JIB ANGLES

ITEM NO.	202	200	201	203
JIB ANGLE	PENDANT 1.42 M (4 FT-8.0)	LINK	PIN	PIN COTTER
5°	0	0	2	6
15°	0	2	4	8
25°	2	0	2	6

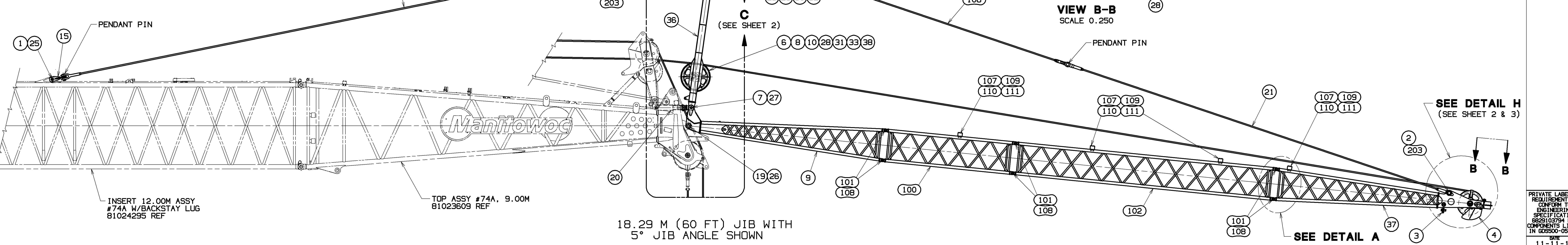
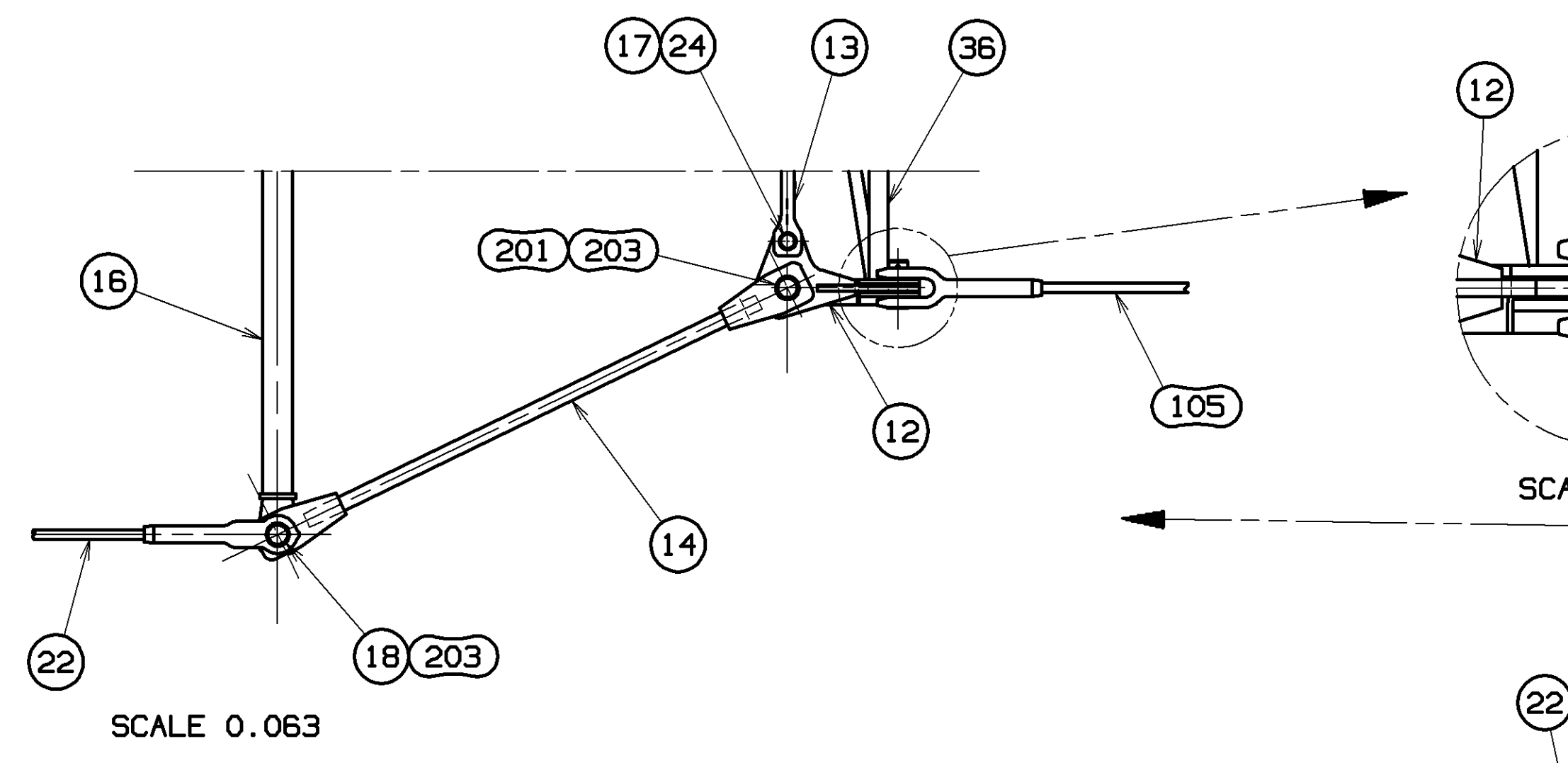
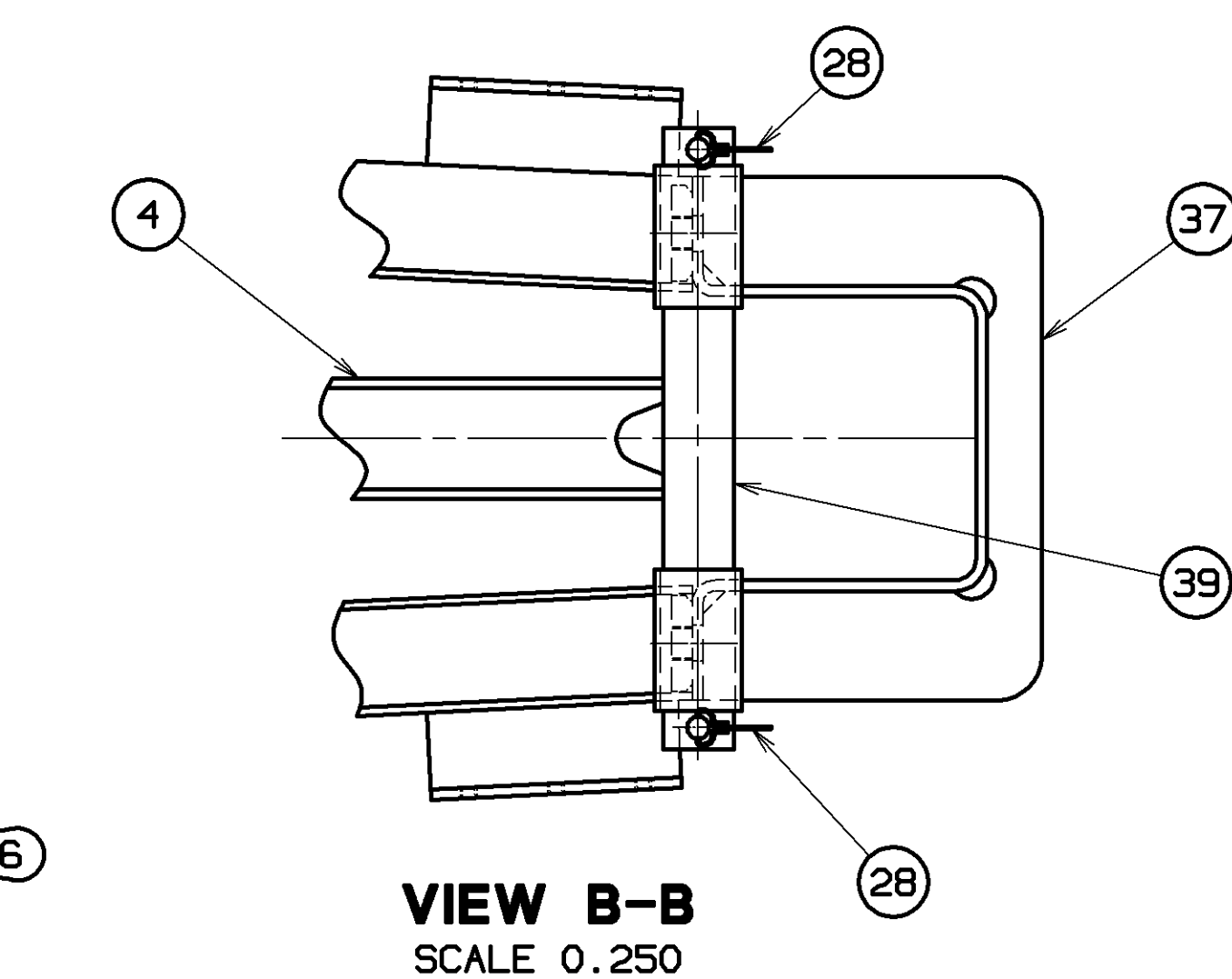
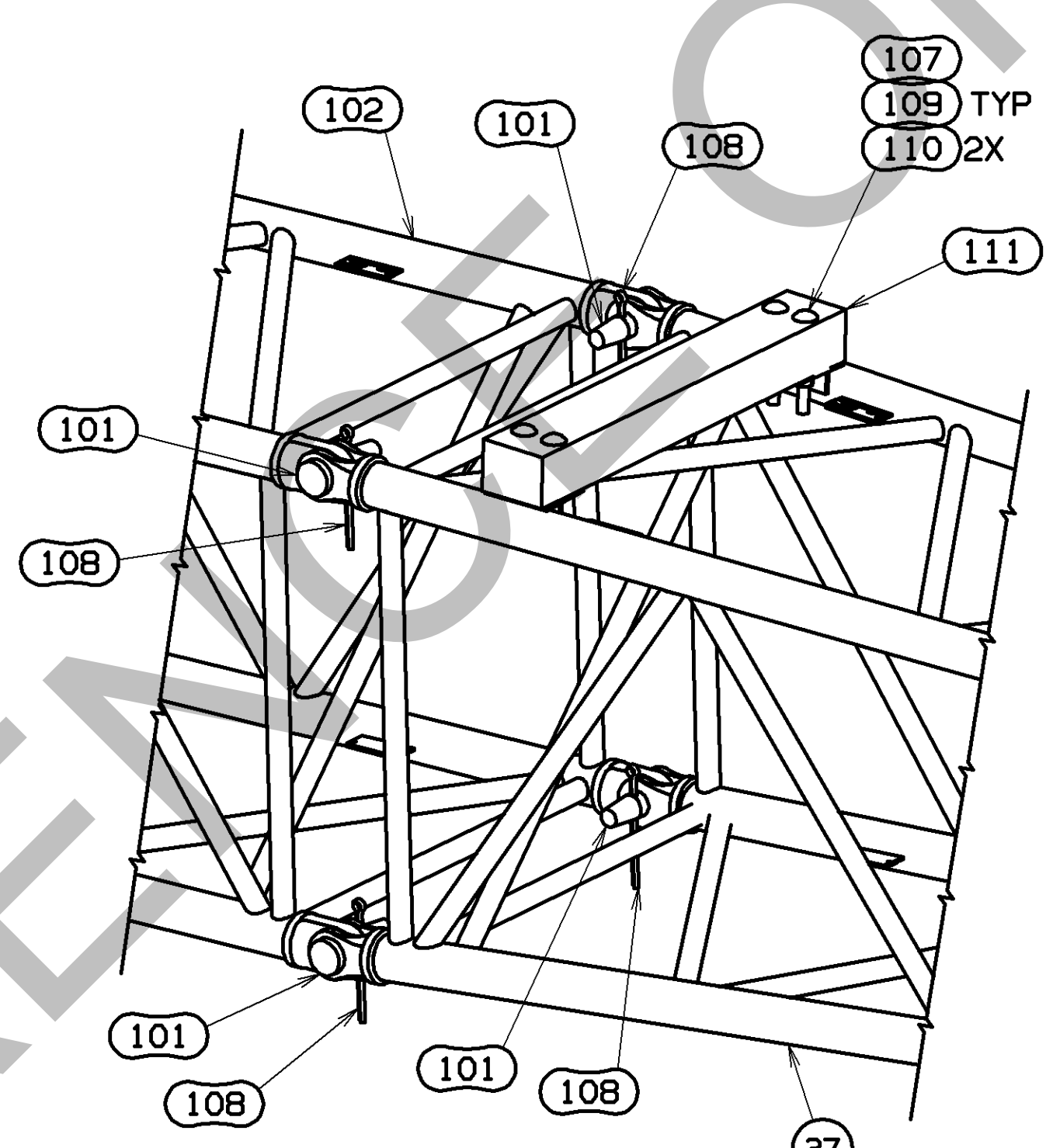
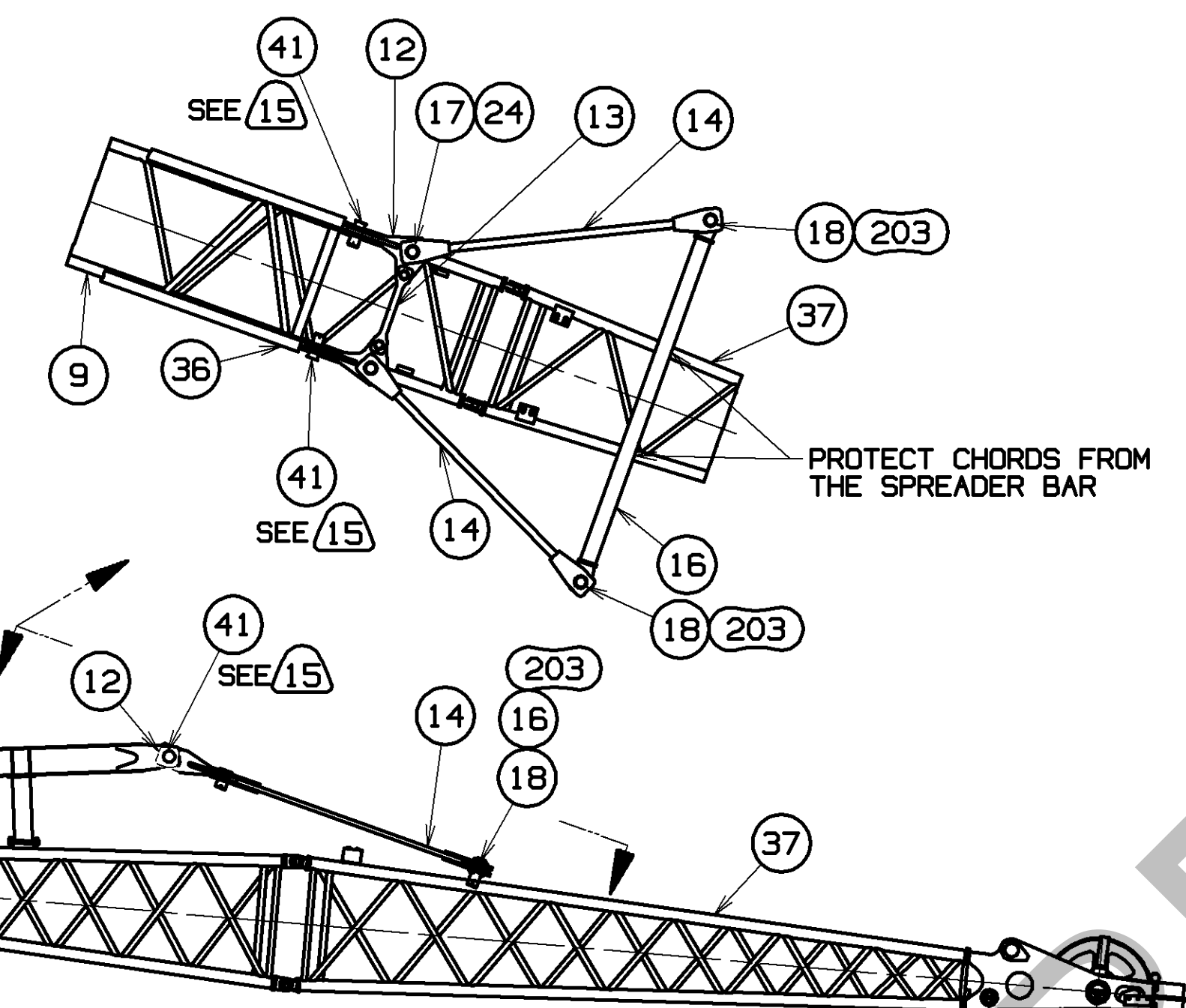
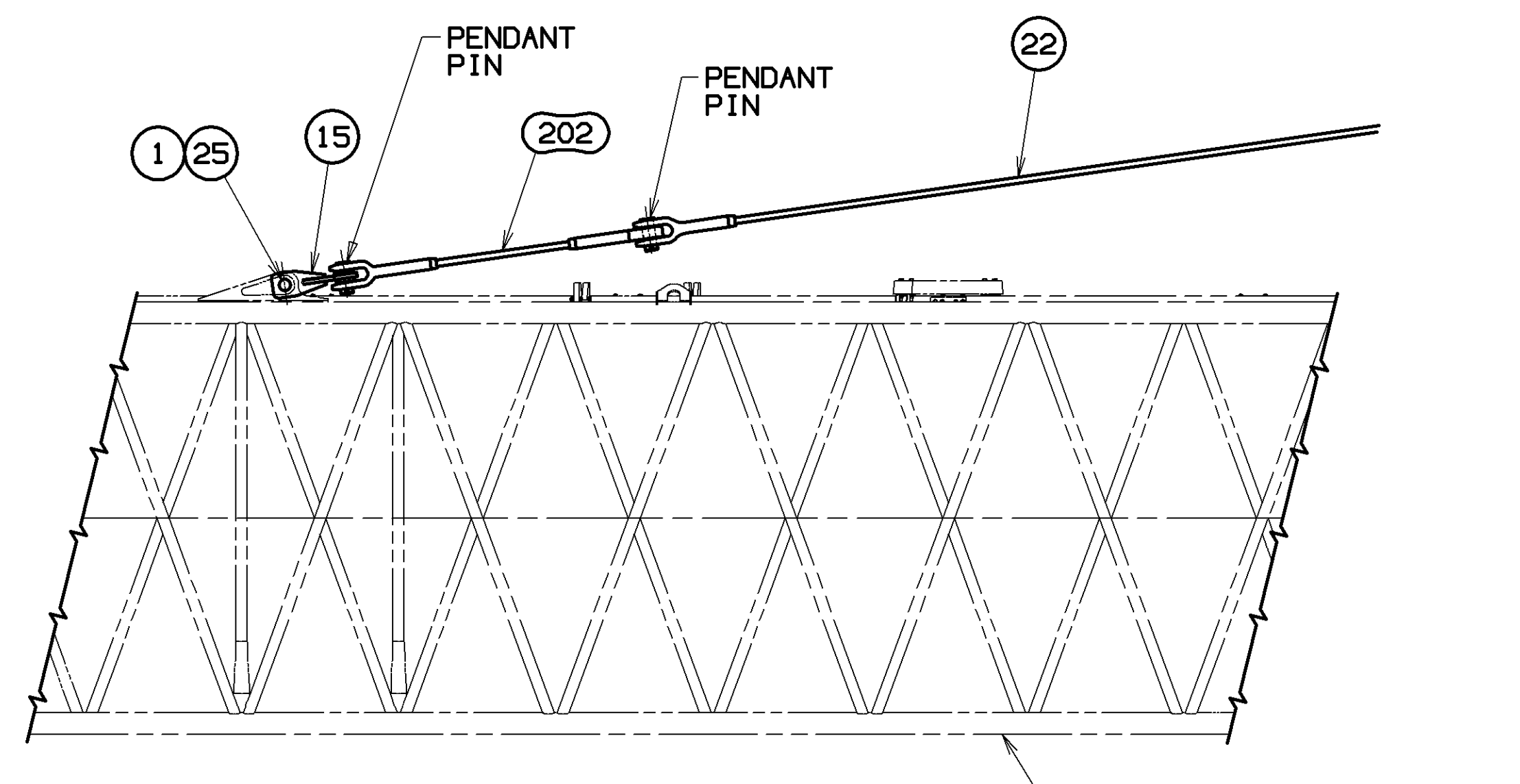
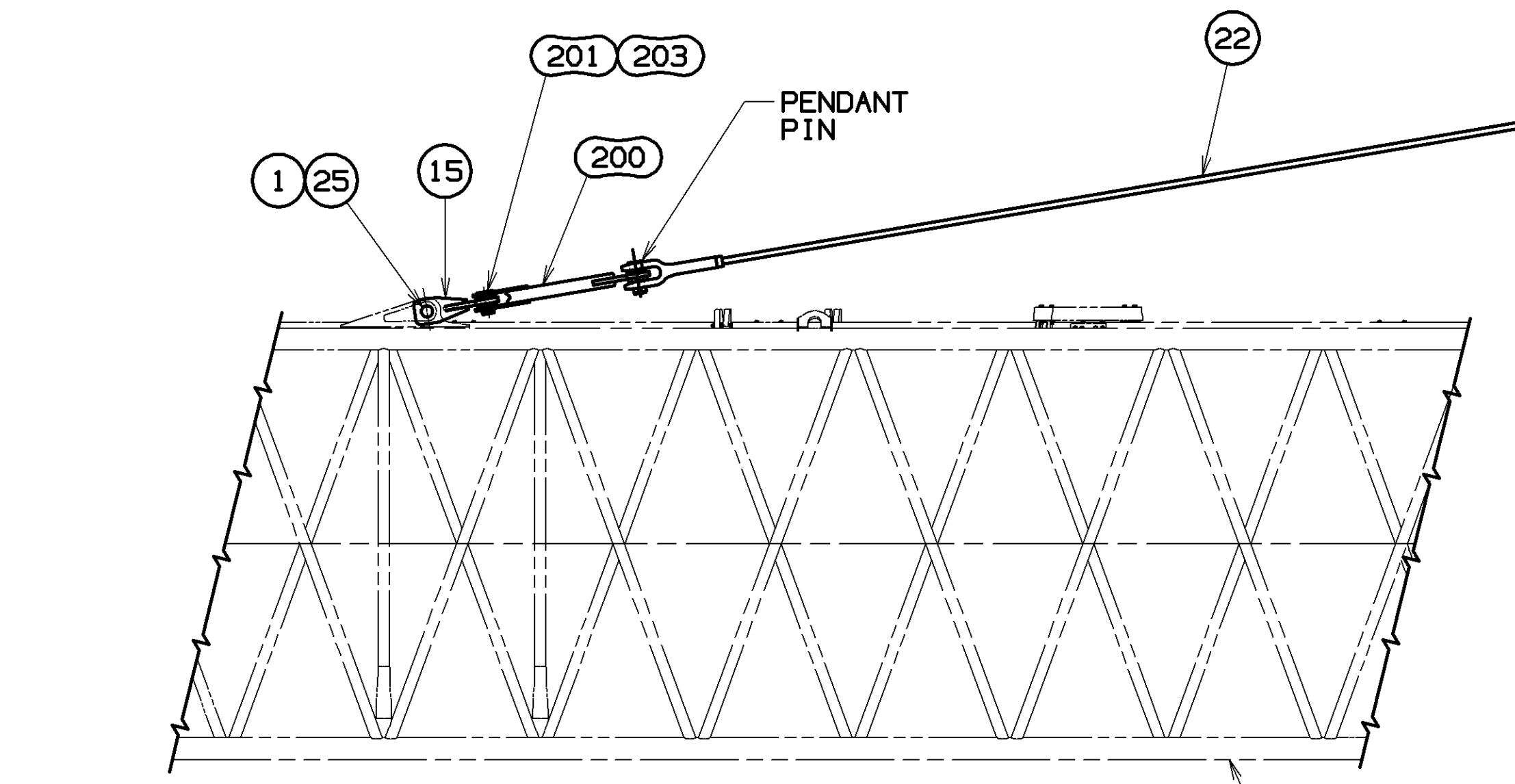
- (1) MINIMUM BOOM LENGTH REQUIRED FOR JIB = 27.0 M (88.6 FT)
- (2) ON DRAWING A02422
- (3) ON DRAWING A02308
- (4) ON DRAWING A01891
- (5) INSERTS AND CORRESPONDING PENDANTS MUST BE INSTALLED IN ORDER OF ASCENDING LENGTH STARTING AT JIB BUTT. SEE SHEET 3 FOR JIB/JIB PENDANT MAKE-UP.
- (6) TOP 032948 CAN BE USED IN PLACE OF TOP A01810 (ITEM 37) GUARD WIRE ROPE A02370 (ITEM 39) AND PIN SAFETY 563823 (ITEM 28). USE OF 032948 REQUIRES THAT THE WEDGE SOCKET BE REMOVED FROM THE LOAD LINE TO REEVE.
- (7) STRUT 177131 CAN BE USED IN PLACE OF STRUT A01297 (ITEM 36) GUARD WIRE ROPE A02066 (ITEM 39) AND PIN SAFETY 563823 (ITEM 28). USE OF 177131 REQUIRES THAT THE WEDGE SOCKET BE REMOVED FROM THE LOADLINE TO REEVE.
- (8) JIB TOP 15 FT WELDMENT I.D. TAG #A01810.
- (9) JIB BUTT 15 FT WELDMENT I.D. TAG #177054.
- (10) JIB INSERT 10 FT WELDMENT I.D. TAG #032938.
- (11) JIB INSERT 20 FT WELDMENT I.D. TAG #176938.
- (12) REMOVE SOCKET, WEDGE AND PIN PROVIDED WITH HOOK AND WEIGHT BALL 218214 (ITEM 300) OR BLOCK HOOK 237095 (ITEM 301) AND REPLACE WITH SOCKET BUTTON A11040 (ITEM 302).
- (13) USE EXISTING SOCKET, WEDGE AND PIN PROVIDED WITH HOOK AND WEIGHT BALL 218214 (ITEM 300) OR BLOCK HOOK 237095 (ITEM 301).
- (14) USE ADAPTER 196135 FROM OPTION 2 ON 090317 (ITEM 3).
- (15) THESE ARE EXTRA PEADANT PINS IDENTICAL TO THE ONES THAT COME WITH THE PENDANT ITEM 22 (277432). THEY ARE TO BE USED TO STOW THE SPREADER FRAMEWORK FOR SHIPPING.
- (16) JIB TOP 81010308 CAN BE USED IN PLACE OF JIB TOP A01810.
- (17) ATTACH TIMBERS SO THEY ARE FREE TO SLIDE UNDER THERMAL EXPANSION/CONTRACTION OF PLASTIC
- (18) SEE VIEWS OF DETAIL H ON SHEETS 2 AND 3 FOR BUTTON AND WEDGE SOCKET CONFIGURATIONS

ITEM NO.	DESCRIPTION	QUANTITY	MATERIAL	REF. NO.
BILL OF MATERIAL				
JIB FIXED ASSY #134 FOR #74 BOOM				
1	PIN 2 HOLE 2.00 DIA X 2.59 LG	073045		
2	PIN 1 HOLE W/HD 2.25 DIA X 3.55 LG	075052		
3	UNIV WR ANCHOR JOINT ASSY #123 JIB	090317		
4	SHAFT ASSEMBLY JIB POINT	090318		
5				
6	PLATE KEEPER .500 THICK	169810		4
7	PIN 2 HOLE 2.000 DIA X 4.69 LG	170851		
8	SHEAVE ASSY 27.00 1.125	176799		
9	BUTT JIB 15 FT #134	177054		9
10	PIN KEEPER 5.12 DIA X 5.25 LG	177219		
11				
12	LINK	177295		
13	LINK	177296		
14	LINK	177297		
15	LINK	177299		
16	SPREADER	177300		
17	PIN 1 HOLE W/HD 1.82 DIA X 1.83 LG	177301		
18	PIN 1 HOLE W/HD 2.25 DIA X 4.80 LG	177303		
19	PIN 2 HOLE 2.50 DIA X 3.22 LG	177397		
20	JIB STOP ASSY #134	179332		
21	PENDANT 30 FT-9.00 (9.37 M)	277430		2
22	PENDANT 44 FT-7.00 (13.59 M)	277432		3
23	BUMPER RUBBER	285220		
24	PIN COTTER 5/16 DIA X 3.00 LG	562130		
25	PIN COTTER 3/8 DIA X 3.00 LG	562150		
26	PIN COTTER 3/8 DIA X 4.00 LG	562152		
27	PIN COTTER 3/8 DIA X 5.00 LG	562154		
28	PIN SAFETY .25X1.75 LG	563823		6,7
29	HEX NUT 3/8-16UNC GR 5	546054		
30	HHCS 3/8-16UNC X 1.25 GR 5	612456		
31	HHCS 3/8-16UNC X 1.50 GR 5	612715		
32	L WASHER MEDIUM 3/8 ST B18.21.1	710304		
33	L WASHER MEDIUM 3/4 ST B18.21.1	710308		
34				
35				
36	STRUT MACHINING	A01797		7
37	TOP JIB #134 OR #123	A01810		6,8,16
38	GUARD WIRE ROPE 1.50 OD x 21 IN	A02066		7
39	GUARD WIRE ROPE 1.63 OD x 14.25 LG	A02370		6
40				
41	PIN 1 HOLE W/HD 2.25 DIA X 4.66 LG	564097		15
42				
43				

NO.	REQD FOR THE FOLLOWING ITEMS ARE IN JIB LENGTH TABLE	ITEM NO.	DESCRIPTION	QUANTITY	MATERIAL	REF. NO.
100	INSERT 10 FT #123, TUBULAR JIB	032938		10		
101	PIN 1 HOLE W/HD 1.38 DIA X 2.48 LG	076225				
102	INSERT 20 FT #123, TUBULAR JIB	176938		11		
103						
104						
105	PENDANT 9 FT-6.00 (2.89 M)	276729		2		
106	PENDANT 19 FT-0.00 (5.79 M)	277422		2		
107	HEX LOCK NUT PA 5/8-11UNC GR8	548345				
108	PIN COTTER .38 DIA X 6.00	562158				
109	HHCS 5/8-11UNC X 5.00 GR 5	612685				
110	F WASHER 5/8 ST F436	709747				
111	TIMBER 27.00 LG X 3.50 W	81017676		17		

NO.	REQD FOR THE FOLLOWING ITEMS ARE IN JIB ANGLE TABLE	ITEM NO.	DESCRIPTION	QUANTITY	MATERIAL	REF. NO.
200	LINK	177298				
201	PIN 1 HOLE W/HD 2.25 X 3.17 LG	177302				
202	PENDANT 4 FT-8.00 (1.42 M)	277431		2		
203	PIN COTTER 3/8 DIA X 3.50 LG	562151				
204						
205						

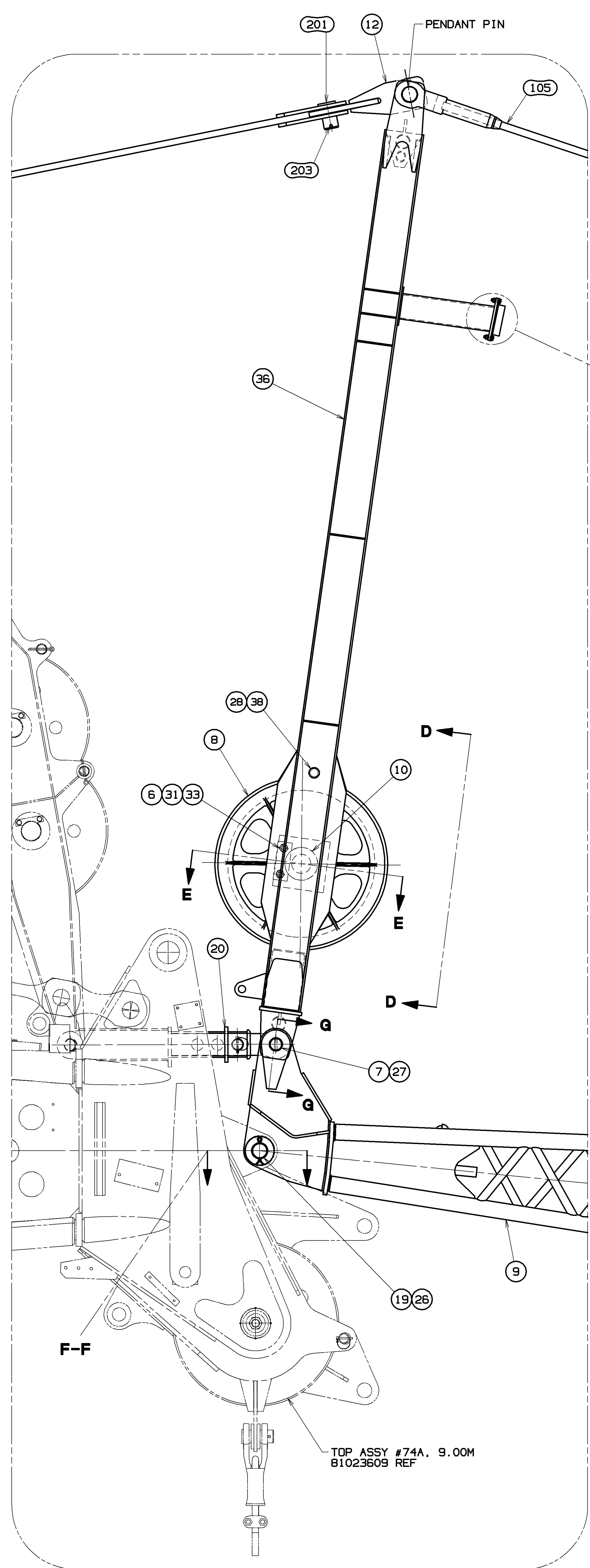
NO.	OPTIONAL PARTS FOR BLOCK HOOK AND WEDGE/BUTTON SOCKET AND ADAPTER (18)	ITEM NO.	DESCRIPTION	QUANTITY	MATERIAL	REF. NO.
300	HOOK & WEIGHT BALL 15 TON (13.6M TON)	218214				
301	BLOCK HOOK 30 TON (27.0M TON)	237095				
302	SOCKET BUTTON 22-26MM WIRE ROPE	A11040				
303						
304						



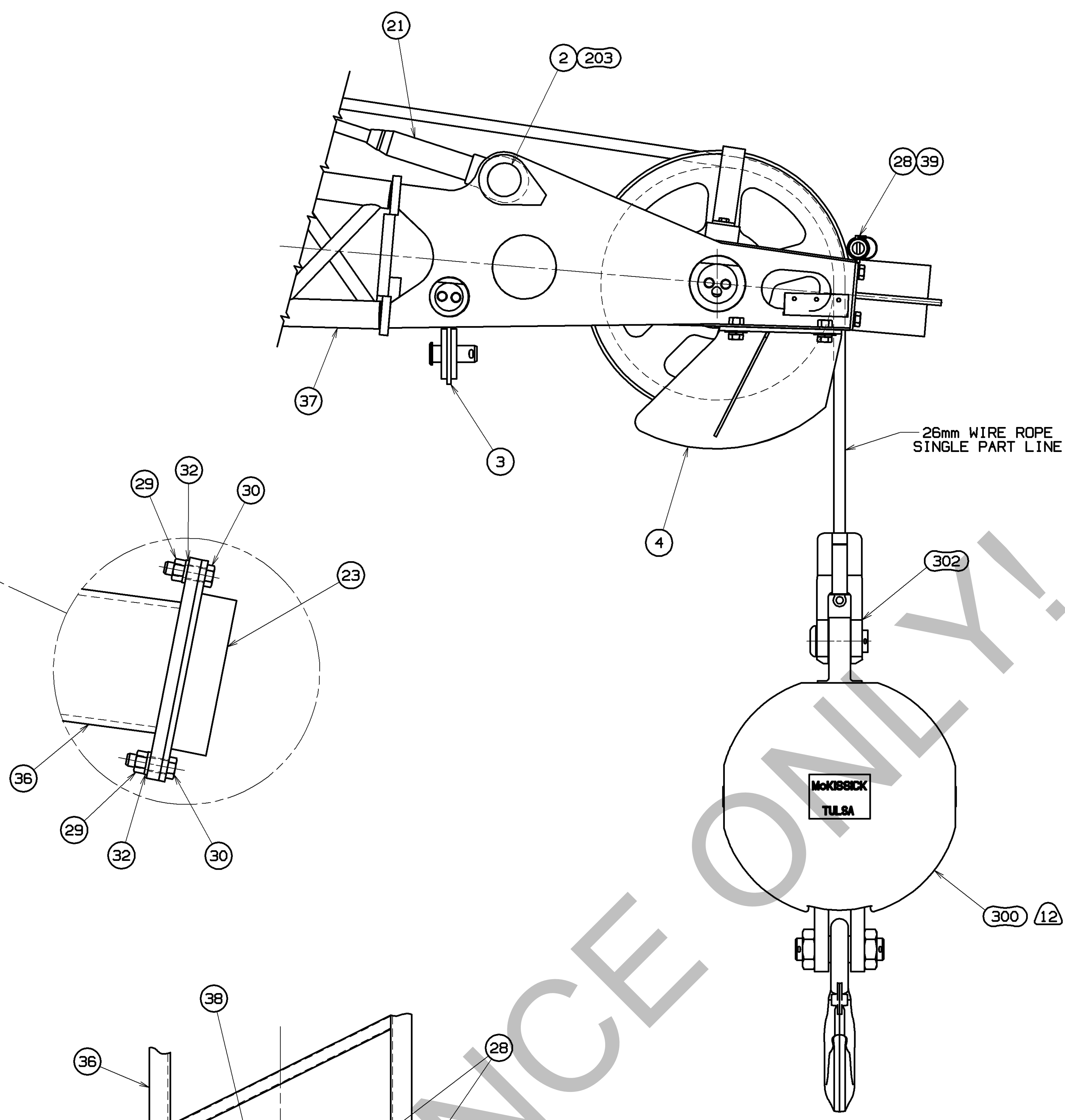
18.29 M (60 FT) JIB WITH 5° JIB ANGLE SHOWN

SEE DETAIL A

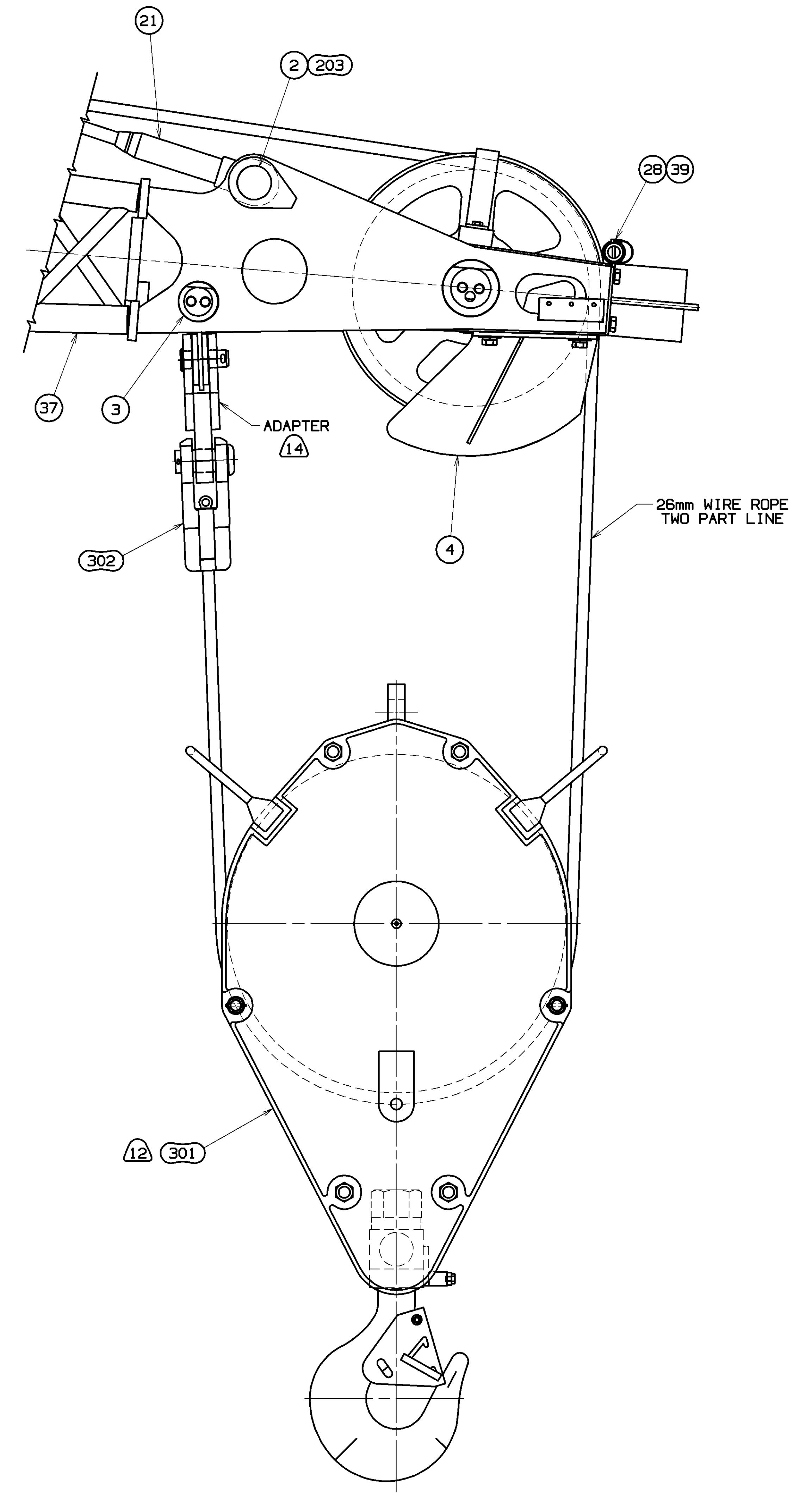
DATE	11-11-15
REV. NO.	A
DR. AUB	Manitowoc Cranes, Inc.
CHK. RHV	Manitowoc Wisconsin
APP. BNN	MANITOWOC
TITLE	JIB FIXED ASSY
MODEL	#134 FOR #74A BOOM



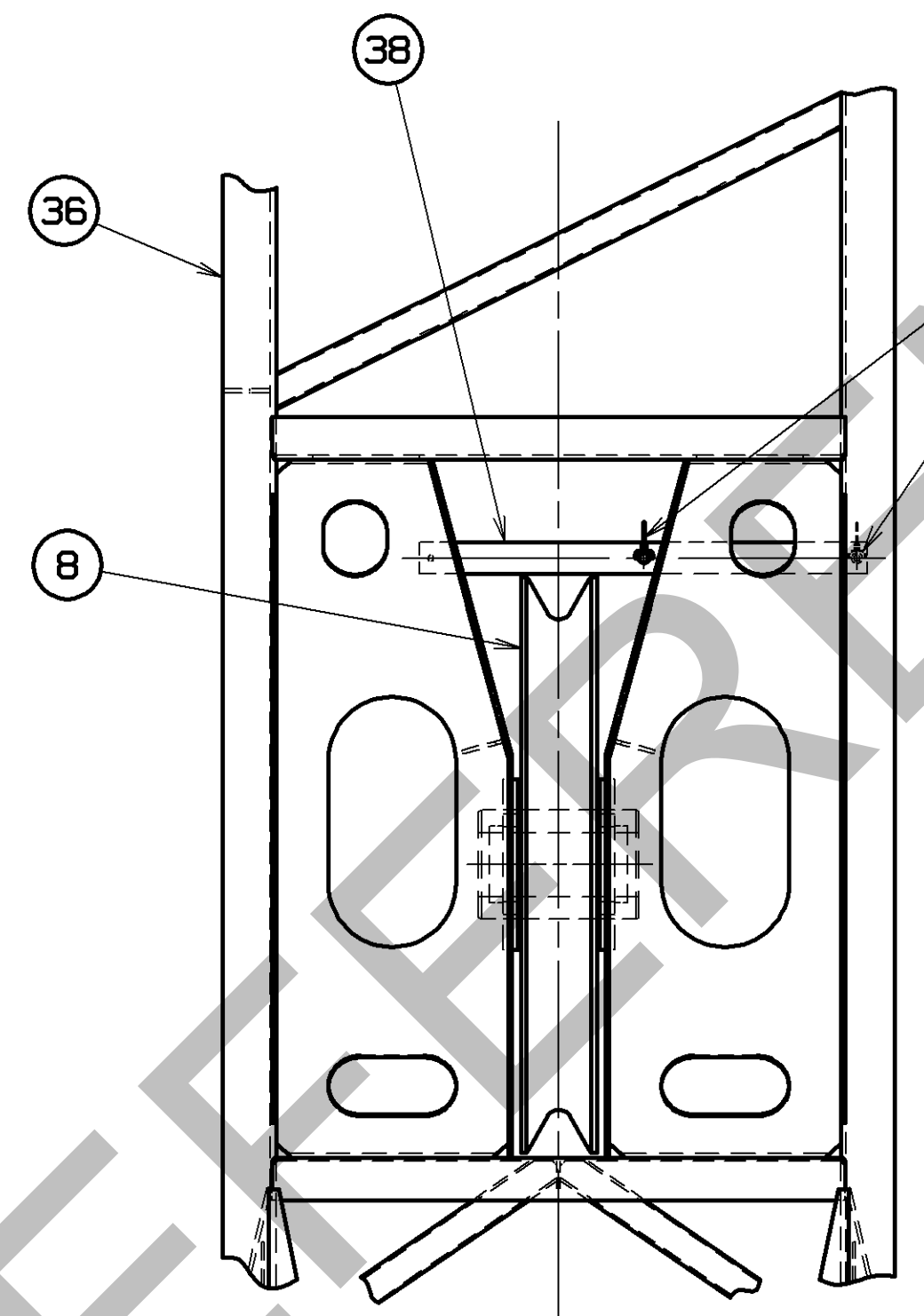
DETAIL C
 (FROM SHEET 1)
 SCALE 0.125



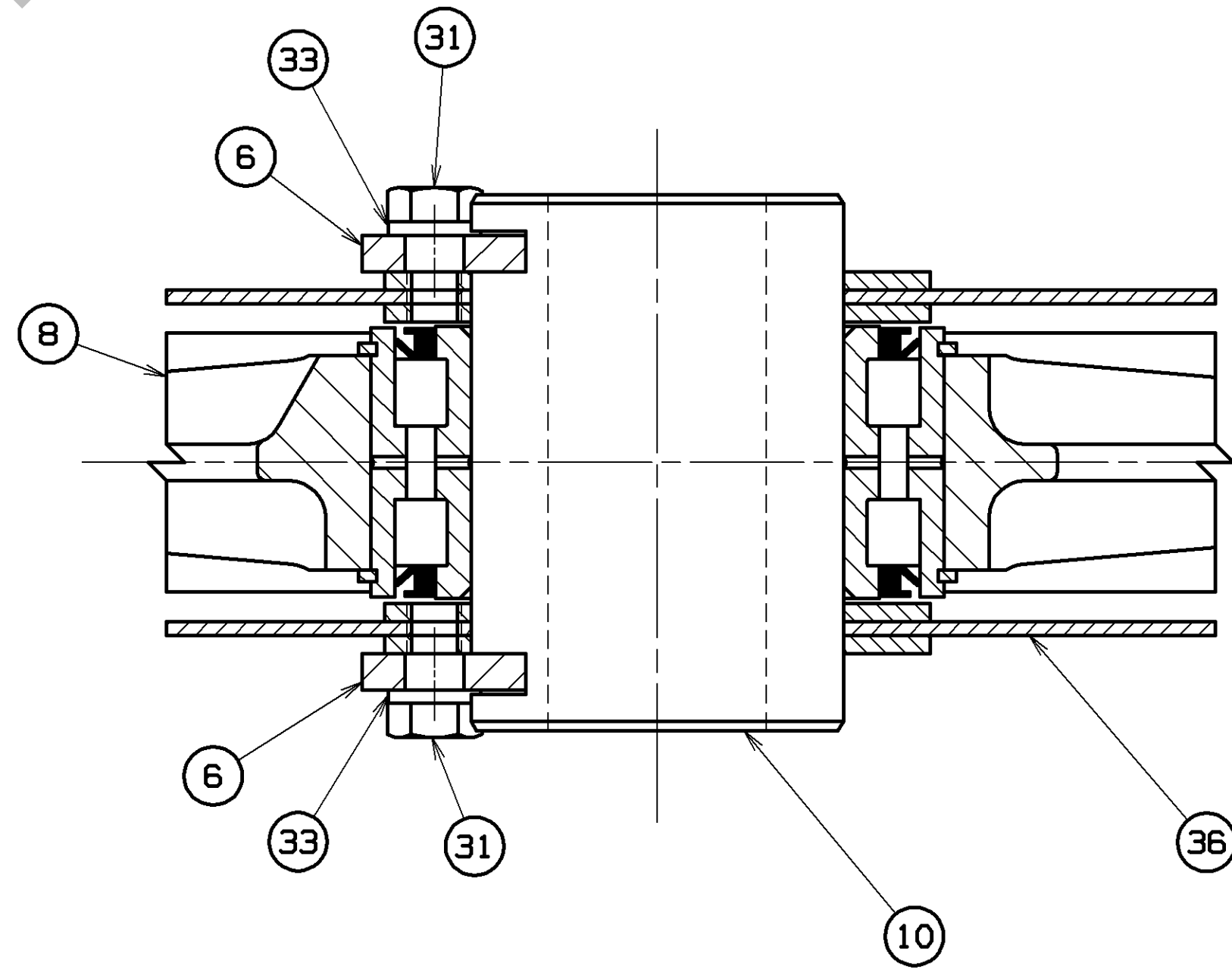
DETAIL H
 SINGLE PART LINE
 WITH BUTTON SOCKET
 (FROM SHEET 1)
 SCALE 0.167



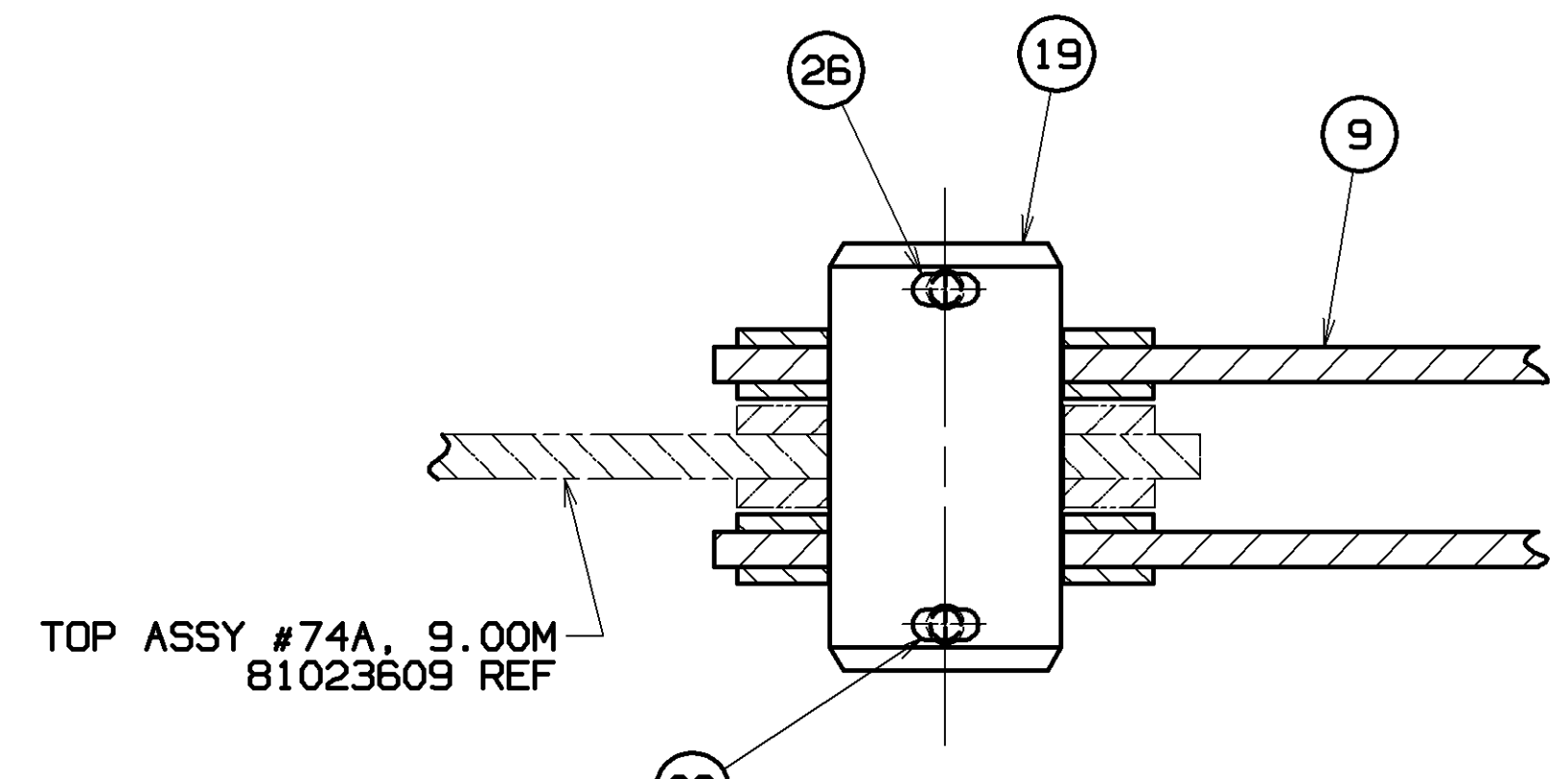
DETAIL H
 TWO PART LINE
 WITH BUTTON SOCKET
 (FROM SHEET 1)
 SCALE 0.167



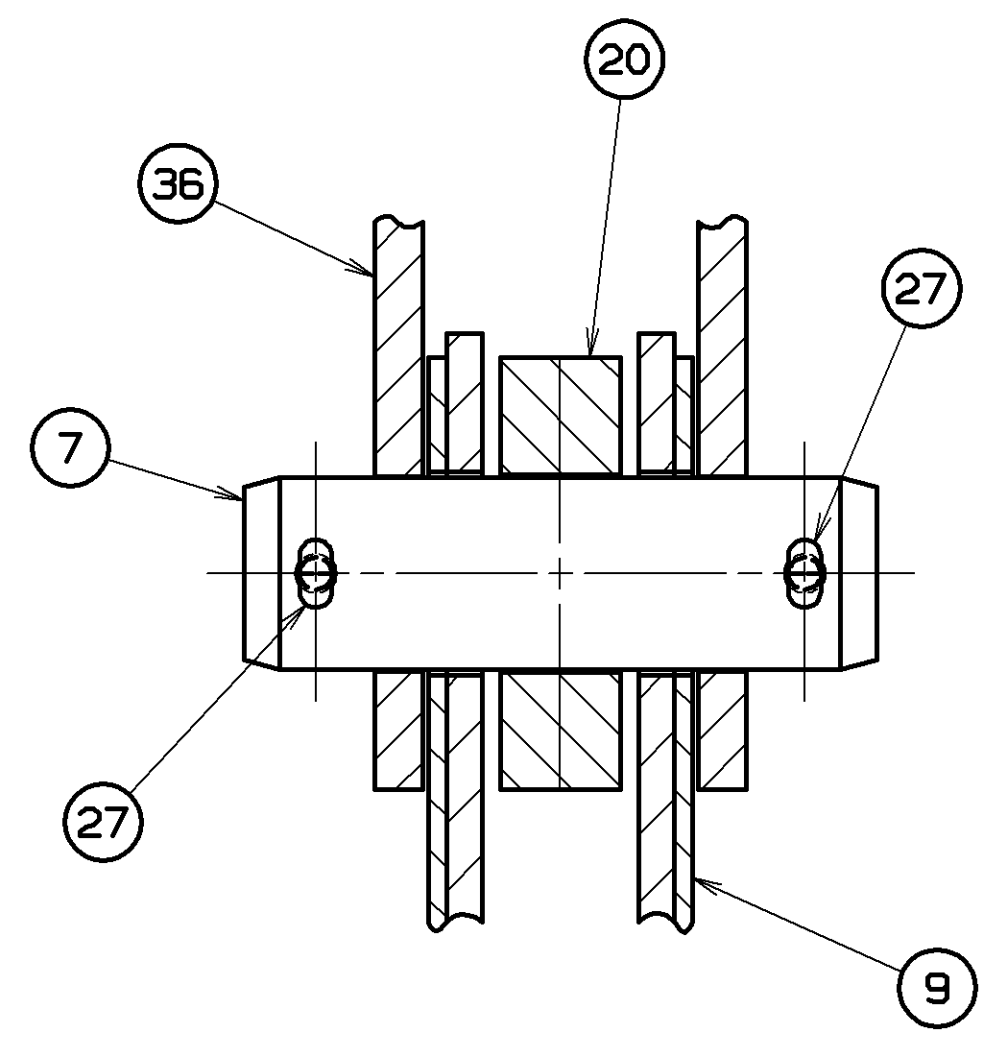
VIEW D-D
 SCALE 0.125



SECTION E-E
 SCALE 0.500



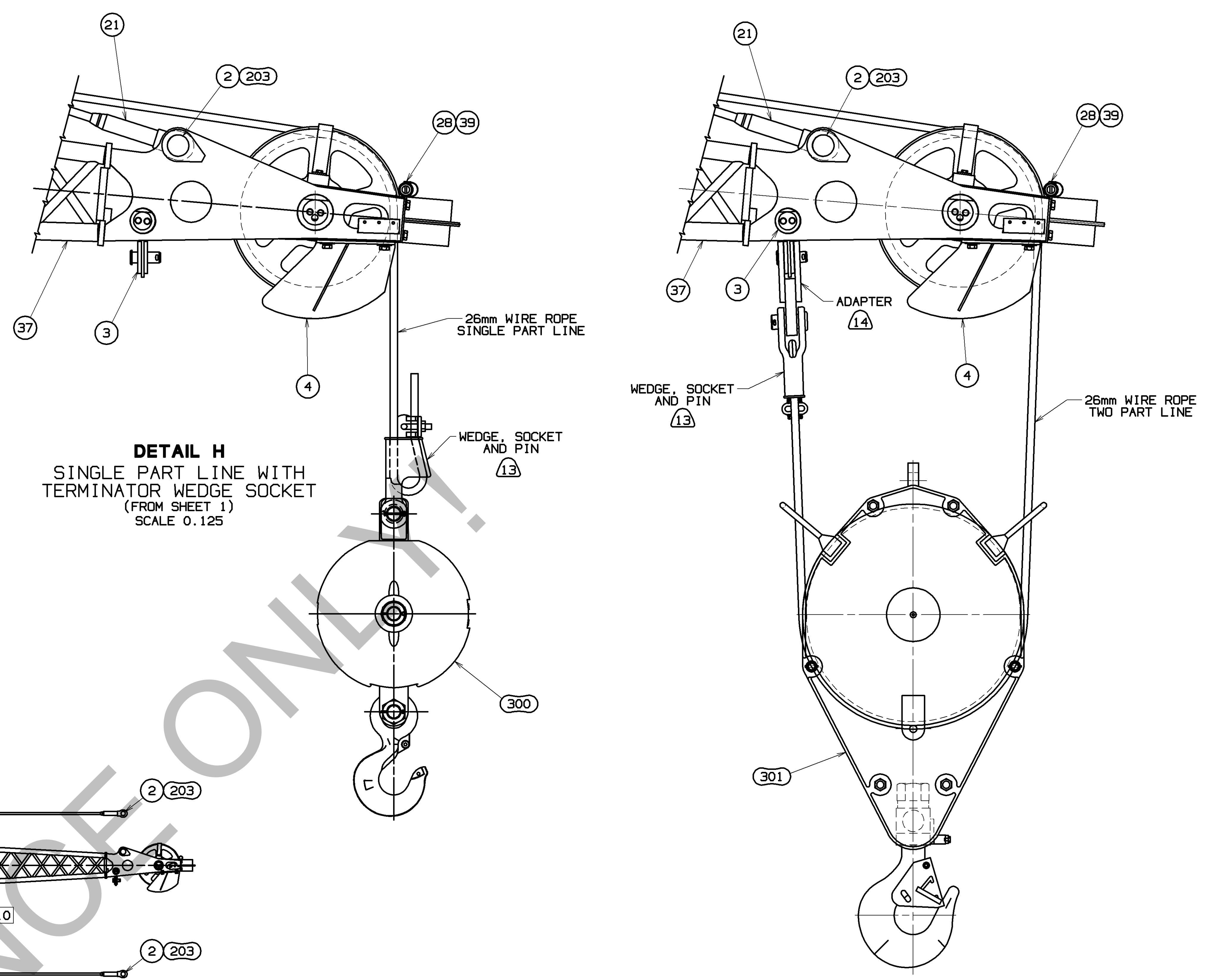
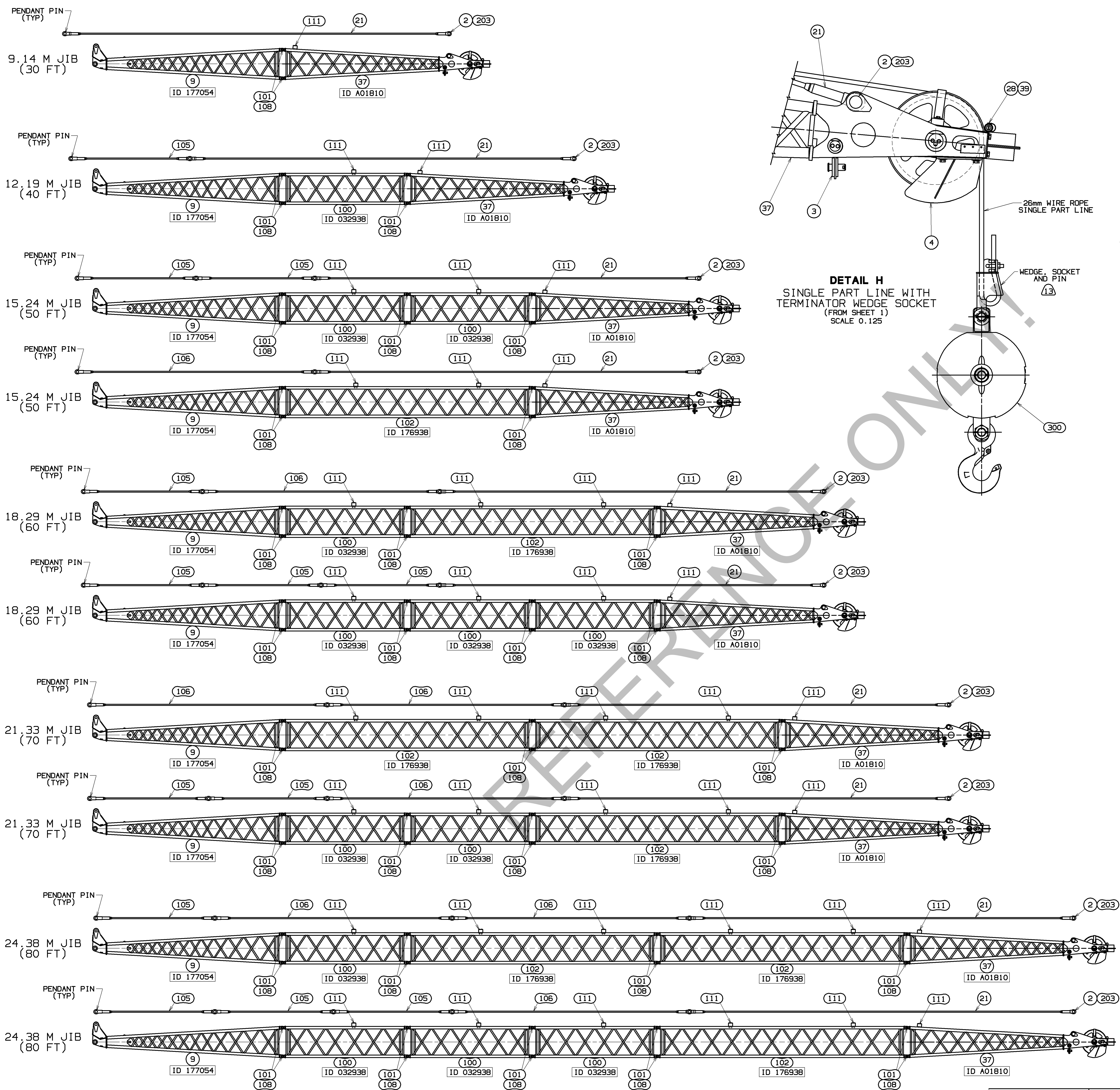
SECTION F-F
 SCALE 0.500



SECTION G-G
 SCALE 0.500

TOP ASSY #74A, 9.00M
 81023609 REF

<small>THIS PRINT REMAINS THE PROPERTY OF HINTRICH CRANES, INC. ALL INFORMATION CONTAINED HEREIN IS CONFIDENTIAL IT IS LOANED, SUBJECT TO RETURN UPON DEMAND, AND ON EXPRESS CONDITION THAT IT IS NOT TO BE COPIED OR USED DIRECTLY OR INDIRECTLY IN ANY MANNER DETRIMENTAL TO OUR INTERESTS.</small>	<small>TOLERANCE UNLESS OTHERWISE SPECIFIED</small> DECIMAL PLACES FABRICATION FINISHING		<small>DATE NOTED</small> DR. AUB CK. RHV APP. BNN	Manitowoc Cranes, Inc. Manitowoc, Wisconsin MODEL MLC165-1 #134 FOR #74A BOOM	<small>REVISIONS</small> 11-11-15 A		
	(1) PLACE 0.5	± 0.12				± 0.18	± 0.05
	(2) PLACE 0.00	± 0.08				± 0.12	± 0.015
	(3) PLACE 0.000	± 0.008				± 0.012	± 0.005
<small>ANGLES</small> 11-30'		<small>WELDING</small> TO THE WELDING SPECIFICATION		JIB FIXED ASSY			



81042734
SHT 3 OF 3

PRIVATE LABELING
REQUIREMENT TO
CONFORM TO
ENGINEERING
SPECIFICATION
6829103794 FOR
COMPONENTS LISTED
IN SECTION 05-026

DATE
11-11-15

REV. LVL.
A

DECIMAL PLACES	FABRICATION	MACHINING	WELDING	OTHER
(1) PLACE 0.5	±.12	±.18	±.05	
(2) PLACE 0.00	±.08	±.12	±.015	
(3) PLACE 0.000	±.008	±.012	±.006	
ANGLES	±1.30°	±1.30°	±0.50°	

THIS DRAWING IS THE PROPERTY OF
MANITOWOC CRANES, INC.
IT IS LOANED, SUBJECT TO RETURN UPON DEMAND,
AND ON EXPRESS CONDITION THAT IT IS NOT TO BE
COPIED OR USED DIRECTLY OR INDIRECTLY IN ANY
MANNER DETRIMENTAL TO OUR INTERESTS.

MANITOWOC CRANES, INC.
JIB FIXED ASSY
#134 FOR #74A BOOM