

GROVE[®]

GMK4080L

Product Guide

ASME B30.5 Imperial 85%



85 USt
(80 t)



197 ft
(60 m)

GVW

105,820 lbs
(48000 kg)



253 ft
(77 m)



GROVE GMK4080L

THE GAME CHANGER

The GMK4080L is an outstanding four-axle taxi crane that, with its 197 foot (60 meter) boom, offers both the longest boom and the lowest gross vehicle weight in its class. Within 11 USt (10 t) per axle, the crane can carry 5.7 USt (5.2 t) counterweight and even 14.7 USt (13.3 t) counterweight with 13 USt (12 t) axle load.

The GMK4080L impresses with strong load charts, both with full counterweight and taxi counterweight.



Fuel-Efficient Single Engine Concept

The single engine concept on the GMK4080L with the latest EUROMOT 5/Tier 4 final engine reduces fuel consumption to a minimum. Using the ECO mode, the GMK4080L is the most fuel efficient crane in its class. Approved for HVO – up to 90% CO₂ reduction.

The Ultimate Taxi Crane

The counterweight design of the GMK4080L allows the easy change of axle load configurations to achieve 11 USt (10 t) per axle, 13 USt (12 t) per axle or 18 USt (16,5 t) per axle.



Latest Gen Cab

The full vision cab was designed with operator comfort, visibility, and productivity in mind. Standard features include 20 degree cab tilt, dual CCS displays, ergonomically friendly jog dial for operating system control, radio with Bluetooth, and adjustable comfort seat.



GROVE[®] CONNECT[™]

GROVE CONNECT transforms the user experience of crane owners and makes everyday work easier.

Get access to secure, accurate data with an easy and intuitive remote 'real time' view on the GMK4080L's operation.



Scan to learn more or visit
manitowoc.com/support.



Grove MEGATRAK[®]

All wheels with hydropneumatic independent suspension and hydraulic locking. Level control in longitudinal and transverse direction with automatic level control for road traffic. Range +7" / - 5" (+170 mm/ -130 mm) +170 mm/-130 mm. Active suspension controlled from either side of outrigger carrier control panels to help with cribbing.



The world's most advanced crane service and support network

WORLDWIDE SUPPORT NETWORK

Manitowoc's customer service extends beyond any borders. Our locations span the globe, covering five continents. No matter where the job takes you, you have a business partner nearby.



PARTS

Locating the correct part quickly is vital to managing your operations. With Manitowoc Customer Support, the parts you need are just a phone call or click away.

LIFT SOLUTIONS

The Manitowoc Crane Lift Solutions Team is dedicated to helping customers with unique and customized applications for their Manitowoc cranes, regardless of product line.

TRAINING

Manitowoc Training Centers offer courses for operators and technicians across the globe to provide in-depth instruction on crane operation, maintenance, and troubleshooting procedures.

EnCORE

Manitowoc's EnCORE program maximizes your investment by rebuilding or repairing your crane to extend its life significantly. EnCORE also includes remanufactured parts.



MANITOWOC FINANCE

Manitowoc Finance gets you in the field with the right equipment by giving you access to flexible, affordable financing. With Manitowoc Finance, equipment can be acquired with virtually no cash outlay, and unlike traditional lending, our financial products don't affect bank lines of credit. Your capital resources remain intact for times when you need ready access to cash.

Competitive rates with flexible financing options and payment schedules put you in control.

Did you know? Manitowoc Finance can finance **used** Manitowoc cranes. You can also **trade-in** your used fleet for upgrade and get financed by Manitowoc Finance.



GMK4080L

GROVE

GROVE



CONTENTS

8

Dimensions

11

Data

12

Weights

13

Working Range – Main Boom

14

Load Charts – Main Boom

31

Working Range – Main Boom and Jib Extension

32

Load Charts – Main Boom and Jib Extension

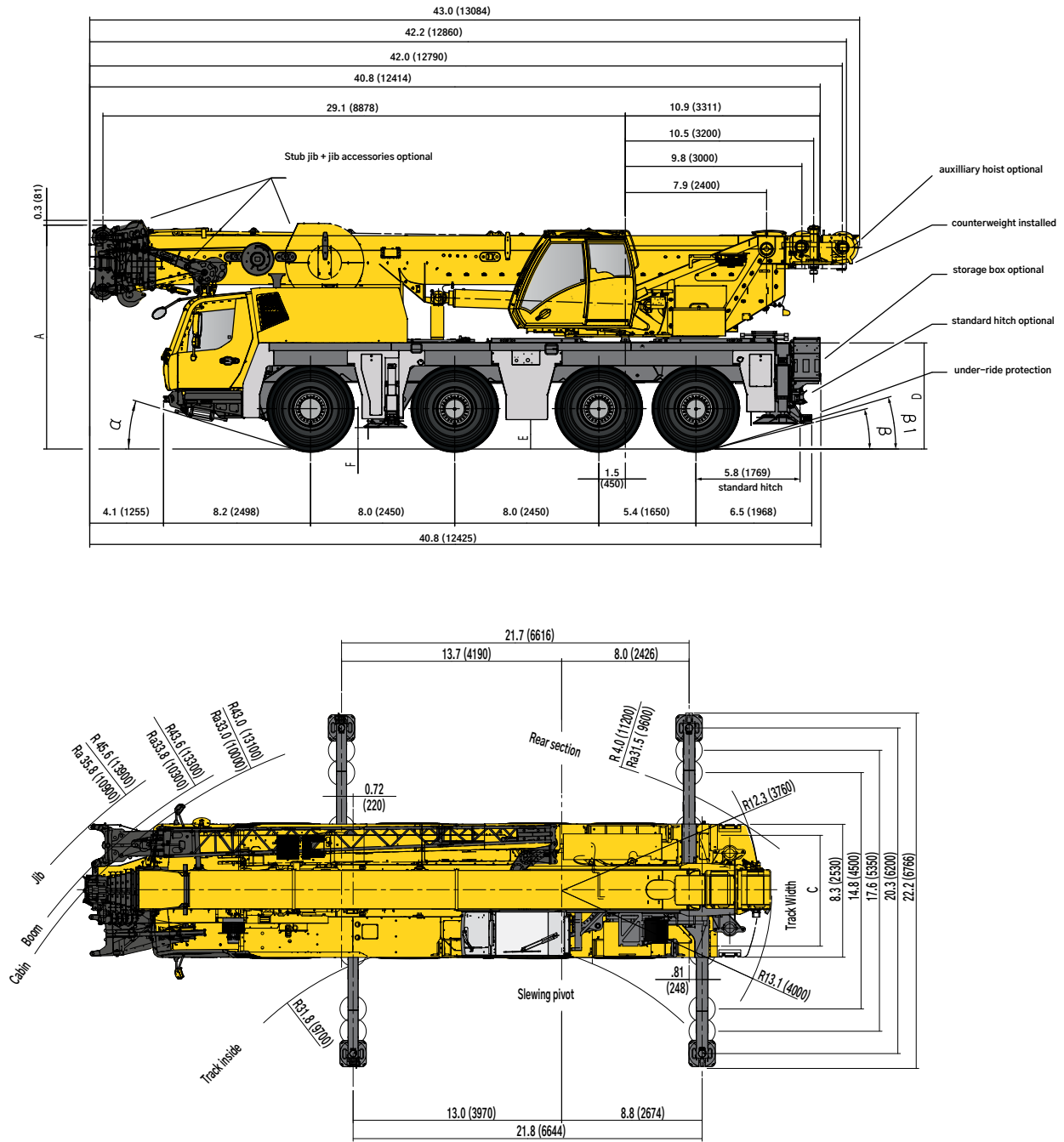
36

Specifications

38

Symbols glossary

DIMENSIONS

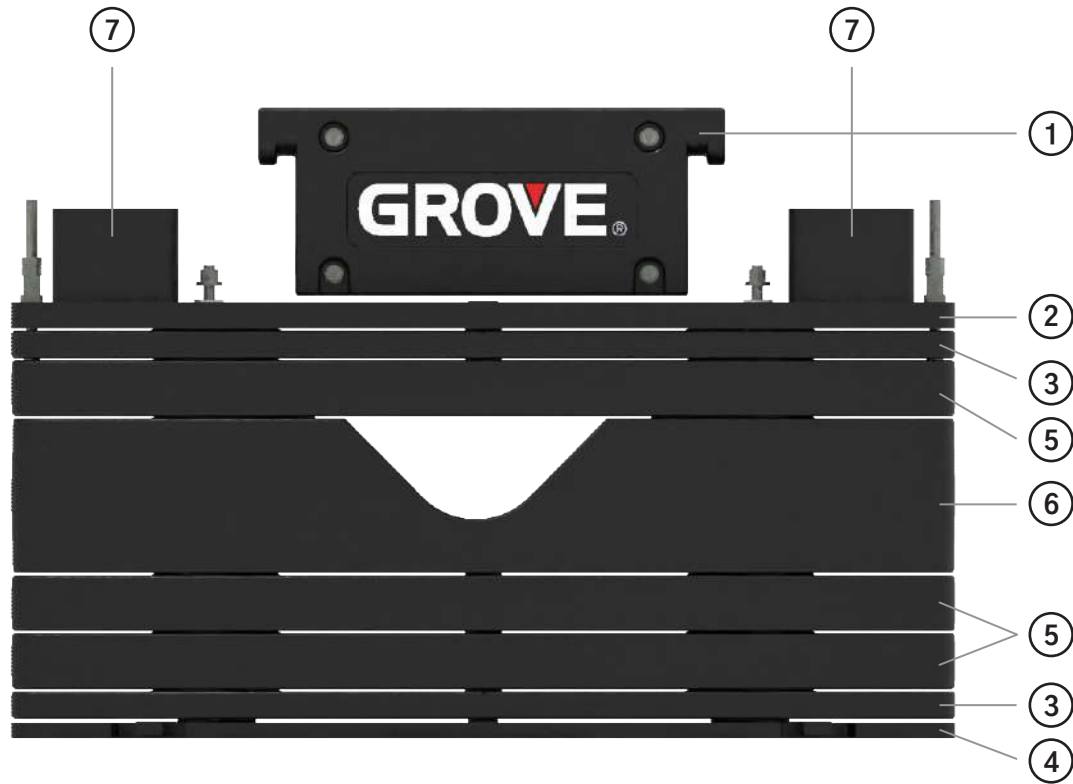



Dimensions shown are in ft (mm)

	A	A*	B	α	β
14.0 R25	12.3 (3755)	11.9 (3625)	8.4 (2550)	16°	17°
16.0 R25	12.5 (3805)	12.1 (3675)	8.5 (2590)	18°	19°
20.5 R25	12.5 (3805)	12.1 (3675)	9.4 (2850)	18°	19°

ft (mm)

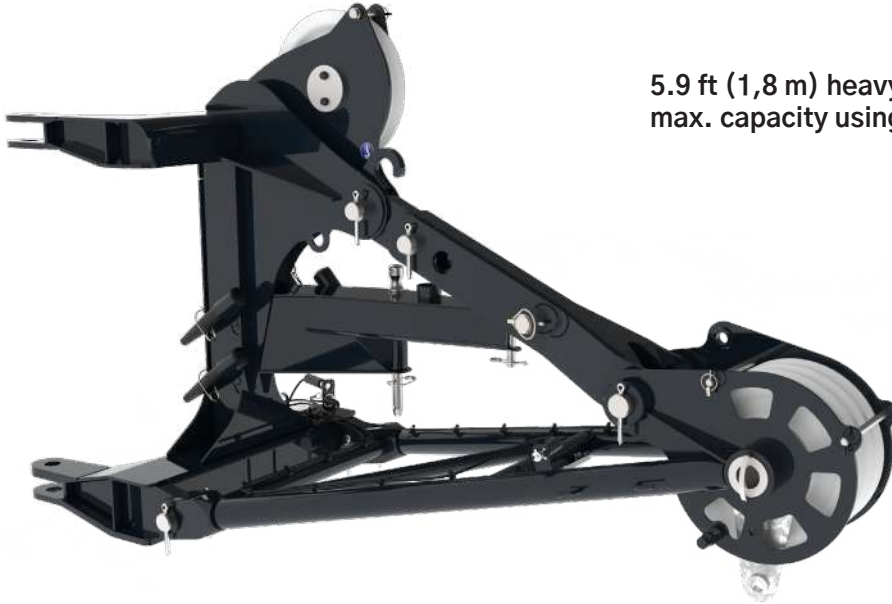
DIMENSIONS



 lbs (t)	① 1300 (0,6)	② 2600 (1,2)	③ 2500 (1,15)	④ 2500 (1,15)	⑤ 5070 (2,3)	⑥ 12,780 (5,8)	⑦ 1270 (0,575)
1300 (0,6)	x						
3900 (1,8)	x	x					
6300 (2,9)	x	x	x				
9000 (4,1)	x	x	x	x			
11,400 (5,2)	x	x	2x	x			
14,100 (6,4)	x	x	x	x	x		
16,500 (7,5)	x	x	2x	x	x		
19,100 (8,7)	x	x	x	x	2x		
21,600 (9,8)	x	x	x	x		x	
24,200 (11,0)	x	x		x	x	x	
26,600 (12,1)	x	x	x	x	x	x	
29,300 (13,3)	x	x	2x	x	x	x	
31,900 (14,5)	x	x	x	x	2x	x	
34,300 (15,6)	x	x	2x	x	2x	x	
37,000 (16,8)	x	x	x	x	3x	x	
39,400 (17,9)	x	x	2x	x	3x	x	
42,100 (19,1 t)	x	x	2x	x	3x	x	2x

DIMENSIONS

Heavy Duty Jib



5.9 ft (1,8 m) heavy duty jib 29 USt (26 t)
max. capacity using 6 parts of line



Heavy lift shackle

DATA



Lifting capacity	Sheaves	Weight	Parts of line	Possible load with crane*
70 USt (63 t)	5	1320 lb (600 kg)	2 – 10 / 11*	61 USt (55 t*)
44 USt (40 t)	3	880 lb (400 kg)	2 – 7	38.6 USt (35 t)
18 USt (6 t)	1	550 lb (250 kg)	1 – 3	16.5 USt (15 t)
5.5 USt (5 t)	H/B	220 lb (100 kg)	1	5.5 USt (5 t)

* Requires additional boom nose sheave.



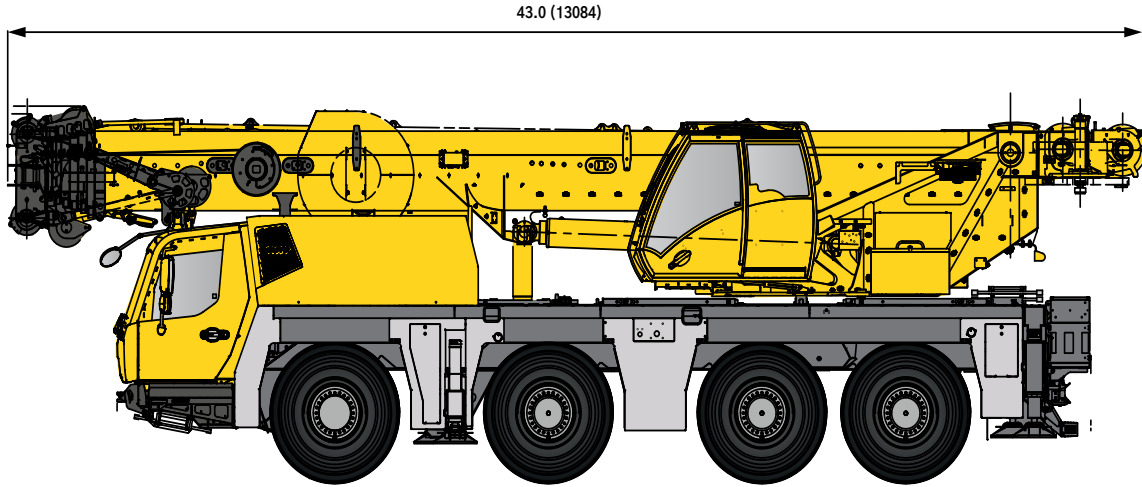
	1	2	3	4	5	6	7	8	9	10	11	12	R1	R2
mph	4	5	6	8	10	13	17	22	28	37	45	53	4	5
	14.00 R25													



	Ininitely variable	Rope	Max. single line pull
	0–394 ft/min (0–120 m/min) Single line	16 mm / 722 ft (16 mm–220 m)	11,240 lbs (50 kN)
	0–394 ft/min (0–120 m/min) Single line	16 mm / 558 ft (16 mm–170 m)	11,240 lbs (50 kN)
	0 – 1,8 min ⁻¹		
	-1,5° to +83°	< 40 s	
	37–197 ft (11,3 – 60 m)	500 s	

WEIGHTS

Boom Over Front



Basic Weights < 24,000 lb / axle	Axles 1 – 2		Axles 3–4		Total	
16” tires on aluminum, hydraulic bi-fold jib, hose reel, single sheave hook block, 5,140 lb (2.3t) installed on S/S, 5,140 lb (2.3t) installed on carrier deck, 11,400 lb (5.2t) total cwt installed on crane.	42,960 lb	19,480 kg	47,840 lb	21,700 kg	90,800 lb	41,190 kg

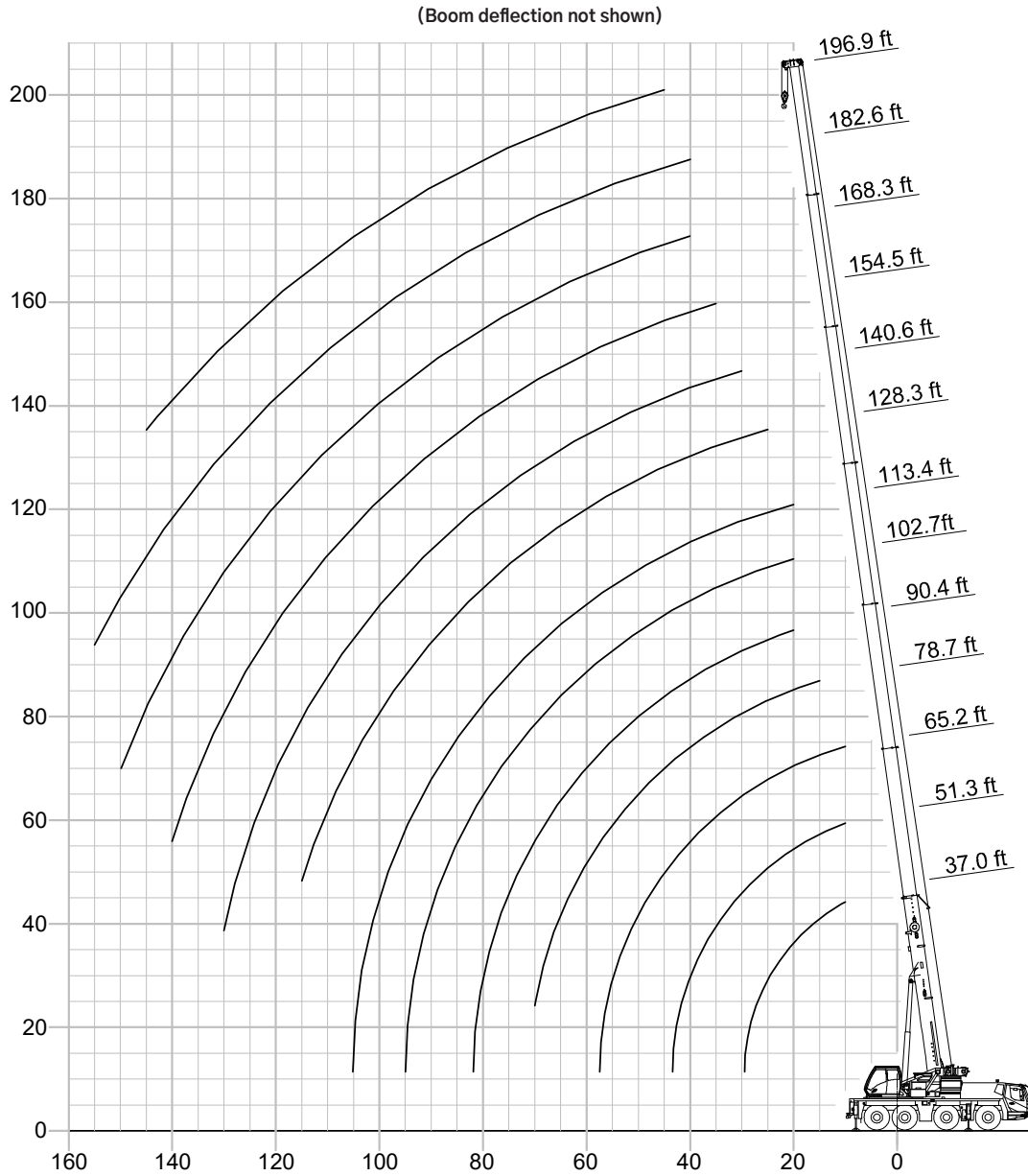
Basic Weights < 26,400 lb / axle	Axles 1 – 2		Axles 3–4		Total	
16” tires on aluminum, hydraulic bi-fold jib, hose reel, single sheave hook block, 5,140 lb (2.3t) installed on S/S, 17,780 lb (8.1t) installed on carrier deck, 24,200 lb (11t) total cwt installed on crane.	52,420 lb	23,020 kg	50,740 lb	23,020 kg	103,150 lb	46,790 kg

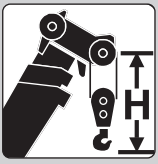
Basic Weights – Full Cwt Mode	Axles 1 – 2		Axles 3–4		Total	
16” tires on steel, hydraulic bi-fold jib, hose reel, three sheave hook block, 12,790 lb (5.8t) installed on S/S, 28,000 lb (12.7t) installed on carrier deck, 42,100 lb (19.1t) total cwt installed on crane.	56,840 lb	25,780 kg	65,460 lb	29,700 kg	122,290 lb	55,470 kg

- < 22,000 lb/ axle furnished upon request
- Trailing boom mode furnished upon request

WORKING RANGE

Working Range Diagram with Telescopic Boom



	Hook block USt (t)	H ft (mm)
	69 (63) S/D	10.8 (3300)
44 (40) S/D	10.5 (3200)	
18 (16) S	10.2 (3100)	
6 (5) H/B	8.9 (2700)	

THIS CHART IS ONLY A GUIDE AND SHOULD NOT BE USED TO OPERATE THE CRANE.
The individual crane's load chart, operating instructions and other instructional plates must be read and understood prior to operating the crane

LOAD CHART

Main Boom



37 ft - 197 ft
(11,3 - 60, 0 m)



42,100 lb
(19,1 t)



20 ft
(6,2 m)



360°



Pounds

Feet	37.0	50.2	64.5	78.7	91.9	104.6	112-119	130.2	140.6	149.3	154-160	171.0	182.6	188.5	196.9
10	110.0	111.0	106.0												
15	84.0	85.0	84.0	81.0											
20	66.0	67.0	66.0	66.0	65.0	54.0	41.6								
25	54.0	55.0	54.0	54.0	55.0	48.0	39.2	34.8							
30		46.0	45.0	46.0	46.0	43.4	36.6	32.0	28.6	24.2					
35		37.6	37.2	38.0	37.2	38.2	33.8	28.8	26.4	23.2	19.6				
40		31.2	31.8	31.6	32.4	31.8	30.8	26.0	24.0	22.0	19.0	15.8	13.4	12.4	
45			27.0	26.6	27.8	27.0	27.8	23.4	21.6	20.8	18.0	15.8	13.4	12.4	10.6
50			23.0	23.4	23.8	23.8	24.0	21.2	19.6	19.0	17.0	15.2	13.4	12.4	10.6
55			18.6	21.2	20.6	21.8	20.8	19.2	18.0	17.6	16.0	14.4	13.2	12.4	10.6
60				18.6	18.0	19.2	18.2	17.0	16.4	16.2	14.8	13.4	12.4	12.0	10.4
65				16.2	15.6	16.8	15.8	15.0	14.4	14.8	13.8	12.8	11.8	11.2	10.0
70				7.4	13.6	14.8	14.2	13.0	12.8	13.0	12.8	12.0	11.0	10.6	9.6
75					11.8	13.0	13.4	11.2	11.2	11.6	11.2	11.2	10.4	10.0	9.2
80					10.4	11.4	12.2	9.8	9.6	10.2	10.0	10.2	9.8	9.4	8.8
85						10.2	10.8	8.4	8.4	9.4	8.8	9.0	9.2	9.0	8.2
90						9.0	9.6	7.4	7.2	9.0	7.8	8.4	8.4	8.4	7.8
95							6.2	8.6	6.4	6.2	8.4	6.2	8.0	7.4	7.4
100								7.8	5.8	5.4	7.4	5.8	7.2	6.8	6.6
105								6.0	5.4	4.8	6.6	5.4	6.4	6.4	6.0
110								5.6	5.0	4.6	6.0	5.2	5.6	5.8	5.4
115								3.2	4.8	4.2	5.2	4.8	5.2	5.2	4.8
120									4.4	4.0	4.6	4.6	5.0	4.6	4.2
125										3.8	4.2	4.4	4.4	4.0	3.6
130										3.6	3.6	4.0	4.0	3.4	3.0
135											3.2	3.8	3.4	3.0	2.6
140												3.6	3.0	2.6	2.2
145													2.6	2.2	1.8
150														2.2	1.8
155															1.4


* Boom length noted represents range of similar lengths.


THIS CHART IS ONLY A GUIDE AND SHOULD NOT BE USED TO OPERATE THE CRANE.

The individual crane's load chart, operating instructions and other instructional plates must be read and understood prior to operating the crane

LOAD CHART

Main Boom

 37 ft - 197 ft
(11,3 - 60, 0 m)

 39,400 lb
(17,9 t)

 20 ft
(6,2 m)

 360°



Pounds

Feet	37.0	50.2	64.5	78.7	91.9	104.6	112-119	130.2	140.6	149.3	154-160	171.0	182.6	188.5	196.9
10	110.0	110.0	106.0												
15	83.0	84.0	84.0	81.0											
20	66.0	67.0	66.0	66.0	65.0	54.0	41.6								
25	54.0	55.0	54.0	54.0	54.0	48.0	39.2	34.8							
30	20.2	45.0	44.0	45.0	45.0	43.4	36.6	32.0	28.6	24.2					
35		36.8	37.2	37.0	36.2	37.2	33.8	28.8	26.4	23.2	19.6				
40		31.0	31.0	30.8	31.8	31.0	30.8	26.0	24.0	22.0	19.0	15.8	13.4	12.4	
45			26.2	26.0	27.0	26.2	26.6	23.4	21.6	20.8	18.0	15.8	13.4	12.4	10.6
50			23.4	23.4	23.2	23.8	22.8	21.2	19.6	19.0	17.0	15.2	13.4	12.4	10.6
55			17.8	20.6	20.0	21.2	19.8	18.6	18.0	17.6	16.0	14.4	13.2	12.4	10.6
60				17.6	17.2	18.4	17.4	16.2	15.6	16.0	14.8	13.4	12.4	12.0	10.4
65				15.4	14.8	16.0	15.0	14.2	13.6	14.0	13.6	12.8	11.8	11.2	10.0
70				7.4	12.8	14.0	14.2	12.2	12.0	12.4	12.0	12.0	11.0	10.6	9.6
75					11.2	12.2	13.0	10.6	10.4	11.0	10.6	10.8	10.4	10.0	9.2
80					9.8	10.8	11.6	9.2	9.0	10.0	9.4	9.6	9.8	9.4	8.8
85						9.6	10.2	7.8	7.8	9.4	8.4	8.8	8.8	8.8	8.2
90						8.4	9.2	6.8	6.6	8.8	7.8	8.4	7.8	8.0	7.8
95							5.6	8.2	6.2	5.6	7.8	7.4	7.6	7.2	7.0
100								7.2	5.8	5.2	7.0	7.0	6.8	6.8	6.2
105								6.0	5.4	4.8	6.2	6.4	6.0	6.0	5.4
110								5.6	5.0	4.6	5.4	5.8	5.6	5.4	4.8
115								3.2	4.8	4.2	4.8	5.2	5.2	4.6	4.2
120									4.4	4.0	4.2	4.6	4.6	4.0	3.6
125										3.8	3.8	4.4	4.0	3.6	3.0
130										3.6	3.2	4.0	3.6	3.0	2.6
135											2.8	3.6	3.2	2.6	2.0
140												3.2	2.6	2.2	1.8
145													2.4	1.8	1.4
150														2.0	1.4

* Boom length noted represents range of similar lengths.

THIS CHART IS ONLY A GUIDE AND SHOULD NOT BE USED TO OPERATE THE CRANE.

The individual crane's load chart, operating instructions and other instructional plates must be read and understood prior to operating the crane

LOAD CHART

Main Boom



37 ft - 197 ft
(11,3 - 60, 0 m)



37,000 lb
(16,8 t)



20 ft
(6,2 m)



360°



Pounds

Feet	37.0	50.2	64.5	78.7	91.9	104.6	112-119	130.2	140.6	149.3	154-160	171.0	182.6	188.5	196.9
10	110.0	110.0	106.0												
15	83.0	84.0	83.0	81.0											
20	66.0	66.0	66.0	65.0	65.0	54.0	41.6								
25	54.0	55.0	54.0	53.0	54.0	48.0	39.2	34.8							
30		44.0	43.2	44.0	43.6	43.4	36.6	32.0	28.6	24.2					
35		35.8	36.4	36.2	36.0	35.6	33.8	28.8	26.4	23.2	19.6				
40		30.2	30.2	30.0	31.0	29.6	29.8	26.0	24.0	22.0	19.0	15.8	13.4	12.4	
45			26.2	25.6	26.4	26.0	25.4	23.4	21.6	20.8	18.0	15.8	13.4	12.4	10.6
50			22.8	23.0	22.6	23.6	21.8	20.4	19.6	19.0	17.0	15.2	13.4	12.4	10.6
55			17.8	19.6	19.0	20.2	18.8	17.6	17.0	17.4	16.0	14.4	13.2	12.4	10.6
60				17.2	16.4	17.4	16.6	15.2	14.8	15.2	14.6	13.4	12.4	12.0	10.4
65				15.8	14.0	15.2	15.0	13.4	13.0	13.2	12.8	12.8	11.8	11.2	10.0
70				7.4	12.2	13.2	14.0	11.6	11.2	11.6	11.2	11.4	11.0	10.6	9.6
75					10.6	11.6	12.4	9.8	9.8	10.8	10.0	10.0	10.4	10.0	9.2
80					9.2	10.2	10.8	8.4	8.4	10.0	8.8	9.4	9.2	9.2	8.8
85						9.0	9.6	7.2	7.2	9.4	8.4	8.8	8.2	8.4	8.0
90						8.0	8.6	6.6	6.2	8.4	7.8	8.0	7.6	7.4	7.2
95						6.2	7.6	6.2	5.6	7.4	7.4	7.0	7.2	6.6	6.4
100							6.8	5.8	5.2	6.4	6.8	6.4	6.4	6.0	5.6
105							6.0	5.4	4.8	5.8	6.0	6.0	5.6	5.2	5.0
110							5.6	5.0	4.6	5.0	5.4	5.4	4.8	4.6	4.4
115							3.2	4.8	4.2	4.4	4.8	4.8	4.2	3.8	3.8
120								4.4	4.0	3.8	4.6	4.2	3.6	3.4	3.2
125									3.8	3.4	4.2	3.6	3.2	2.8	2.6
130									3.6	2.8	3.8	3.2	2.6	2.4	2.2
135										2.4	3.2	2.8	2.2	1.8	1.6
140											2.8	2.4	1.8	1.4	1.2
145												2.0	1.4		
150												1.6			


* Boom length noted represents range of similar lengths.


THIS CHART IS ONLY A GUIDE AND SHOULD NOT BE USED TO OPERATE THE CRANE.

The individual crane's load chart, operating instructions and other instructional plates must be read and understood prior to operating the crane

LOAD CHART

Main Boom

 37 ft - 197 ft
(11,3 - 60, 0 m)

 34,300 lb
(15,6 t)

 20 ft
(6,2 m)

 360°



Pounds

Feet	37.0	50.2	64.5	78.7	91.9	104.6	112-119	130.2	140.6	149.3	154-160	171.0	182.6	188.5	196.9
10	109.0	109.0	106.0												
15	83.0	84.0	83.0	81.0											
20	65.0	66.0	66.0	65.0	65.0	54.0	41.6								
25	53.0	54.0	53.0	53.0	53.0	48.0	39.2	34.8							
30		43.0	42.2	43.4	42.4	42.0	36.6	32.0	28.6	24.2					
35		35.4	35.6	35.2	36.0	34.0	33.8	28.8	26.4	23.2	19.6				
40		29.4	29.4	29.2	30.2	28.6	28.4	26.0	24.0	22.0	19.0	15.8	13.4	12.4	
45			25.8	25.6	25.6	26.0	24.2	22.6	21.6	20.8	18.0	15.8	13.4	12.4	10.6
50			21.8	22.0	21.4	22.6	20.8	19.4	18.8	19.0	17.0	15.2	13.4	12.4	10.6
55			17.2	18.6	18.2	19.4	18.0	16.6	16.2	16.4	16.0	14.4	13.2	12.4	10.6
60				17.2	15.4	16.6	15.8	14.4	14.0	14.2	13.8	13.4	12.4	12.0	10.4
65				15.0	13.2	14.4	15.0	12.6	12.2	12.4	12.0	12.2	11.8	11.2	10.0
70				7.4	11.4	12.6	13.2	10.8	10.6	11.4	10.6	10.8	11.0	10.6	9.6
75					9.8	11.0	11.6	9.2	9.2	10.8	9.4	10.0	9.8	9.8	9.2
80					8.6	9.6	10.2	7.8	7.8	10.0	8.8	9.4	8.6	8.8	8.4
85						8.4	9.0	7.0	6.6	8.8	8.4	8.4	8.0	7.8	7.6
90						7.4	8.0	6.6	6.0	7.8	7.8	7.4	7.4	7.0	6.6
95						6.2	7.0	6.2	5.6	6.8	7.2	6.8	6.6	6.2	5.8
100							6.4	5.8	5.2	6.0	6.2	6.4	5.8	5.4	5.2
105							6.0	5.4	4.8	5.2	5.6	5.6	5.0	4.8	4.6
110							5.6	5.0	4.6	4.6	5.2	5.0	4.4	4.0	3.8
115								4.8	4.2	4.0	4.8	4.4	3.8	3.4	3.2
120								4.4	4.0	3.4	4.4	3.8	3.2	3.0	2.8
125									3.8	3.0	3.8	3.2	2.8	2.4	2.2
130									3.6	2.4	3.4	2.8	2.4	2.0	1.8
135										2.0	3.0	2.4	1.8	1.4	1.4
140											2.6	2.0	1.4		
145												1.6			
150												1.4			

* Boom length noted represents range of similar lengths.

THIS CHART IS ONLY A GUIDE AND SHOULD NOT BE USED TO OPERATE THE CRANE.

The individual crane's load chart, operating instructions and other instructional plates must be read and understood prior to operating the crane

LOAD CHART

Main Boom



37 ft - 197 ft
(11,3 - 60, 0 m)



31,900 lb
(14,5 t)



20 ft
(6,2 m)



360°



Pounds

Feet	37.0	50.2	64.5	78.7	91.9	104.6	112-119	130.2	140.6	149.3	154-160	171.0	182.6	188.5	196.9
10	109.0	109.0	106.0												
15	82.0	83.0	83.0	81.0											
20	65.0	66.0	65.0	65.0	65.0	54.0	41.6								
25	52.0	53.0	52.0	53.0	52.0	48.0	39.2	34.8							
30		41.8	42.2	42.2	40.6	40.2	36.6	32.0	28.6	24.2					
35		34.6	34.6	34.2	35.2	32.6	32.6	28.8	26.4	23.2	19.6				
40		28.6	28.8	28.4	29.0	28.6	27.2	25.4	24.0	22.0	19.0	15.8	13.4	12.4	
45			24.6	25.0	24.4	25.0	23.0	21.4	20.8	20.8	18.0	15.8	13.4	12.4	10.6
50			20.6	20.8	20.4	21.4	19.6	18.2	17.6	18.0	17.0	15.2	13.4	12.4	10.6
55			16.2	18.6	17.2	18.4	17.0	15.6	15.2	15.4	15.0	14.4	13.2	12.4	10.6
60				16.4	14.6	15.8	15.8	13.6	13.0	13.4	13.0	13.2	12.4	12.0	10.4
65				14.2	12.4	13.6	14.4	11.8	11.4	12.2	11.2	11.6	11.6	11.2	10.0
70					10.6	11.8	12.4	10.0	9.8	11.4	10.2	10.8	10.2	10.4	9.6
75					9.2	10.2	11.0	8.4	8.4	10.6	9.4	9.8	9.0	9.2	9.0
80					8.2	9.0	9.6	7.6	7.2	9.4	8.8	8.8	8.6	8.2	7.8
85					7.8	7.8	8.4	7.0	6.4	8.2	8.4	7.8	7.6	7.2	7.0
90						6.8	7.4	6.6	6.0	7.2	7.4	7.2	6.8	6.4	6.2
95						6.2	6.8	6.2	5.6	6.2	6.6	6.6	6.0	5.6	5.4
100							6.4	5.8	5.2	5.4	5.8	5.8	5.4	5.0	4.6
105							6.0	5.4	4.8	4.8	5.4	5.2	4.6	4.2	4.0
110							5.4	5.0	4.6	4.2	5.0	4.4	4.0	3.6	3.4
115								4.6	4.2	3.6	4.4	4.0	3.4	3.0	2.8
120								4.0	4.0	3.0	3.8	3.4	2.8	2.4	2.4
125									3.8	2.6	3.4	2.8	2.4	2.0	1.8
130									3.2	2.0	3.0	2.4	2.0	1.6	1.4
135										1.6	2.6	2.0	1.6		
140											2.2	1.6			
145												1.2			

* Boom length noted represents range of similar lengths.

THIS CHART IS ONLY A GUIDE AND SHOULD NOT BE USED TO OPERATE THE CRANE.

The individual crane's load chart, operating instructions and other instructional plates must be read and understood prior to operating the crane

LOAD CHART

Main Boom



37 ft - 197 ft
(11,3 - 60, 0 m)



29,300 lb
(13,3 t)



20 ft
(6,2 m)



360°



Pounds

Feet	37.0	50.2	64.5	78.7	91.9	104.6	112-119	130.2	140.6	149.3	154-160	171.0	182.6	188.5	196.9
10	108.0	109.0	106.0												
15	82.0	83.0	82.0	81.0											
20	65.0	66.0	65.0	64.0	65.0	54.0	41.6								
25	51.0	52.0	51.0	53.0	50.0	48.0	39.2	34.8							
30		40.8	41.4	41.2	40.4	38.2	36.6	32.0	28.6	24.2					
35		33.6	33.6	33.4	33.4	31.6	31.0	28.8	26.4	23.2	19.6				
40		27.2	28.6	28.2	27.6	28.0	25.8	24.2	23.4	22.0	19.0	15.8	13.4	12.4	
45			23.4	23.6	23.2	23.8	21.8	20.2	19.6	19.8	18.0	15.8	13.4	12.4	10.6
50			19.6	20.2	19.2	20.4	18.6	17.2	16.6	17.0	16.4	15.2	13.4	12.4	10.6
55			13.8	18.0	16.2	17.4	17.0	14.8	14.2	14.6	14.0	14.2	13.2	12.4	10.6
60				15.4	13.6	14.8	15.6	12.6	12.2	13.0	12.2	12.4	12.4	12.0	10.4
65				13.4	11.6	12.8	13.6	10.8	10.6	12.2	11.0	11.6	11.0	11.0	10.0
70				8.0	10.0	11.0	11.8	9.2	9.0	11.2	10.2	10.4	9.6	9.8	9.4
75				7.2	8.6	9.6	10.2	8.2	7.8	10.0	9.4	9.2	9.0	8.6	8.2
80					8.2	8.2	9.0	7.6	7.0	8.8	8.8	8.2	8.0	7.6	7.2
85					7.8	7.2	7.8	7.0	6.4	7.6	8.0	7.6	7.2	6.6	6.4
90						6.4	7.2	6.6	6.0	6.6	7.0	7.0	6.2	5.8	5.6
95						6.2	6.8	6.2	5.6	5.8	6.2	6.2	5.6	5.0	4.8
100							6.2	5.8	5.2	5.0	5.8	5.4	4.8	4.4	4.2
105							5.6	5.4	4.8	4.2	5.2	4.6	4.2	3.8	3.6
110							5.0	4.8	4.6	3.6	4.6	4.0	3.6	3.2	3.0
115								4.2	4.2	3.2	4.0	3.4	3.0	2.6	2.4
120								3.6	3.8	2.6	3.4	3.0	2.4	2.0	2.0
125									3.4	2.2	3.0	2.4	2.0	1.6	1.4
130									2.8	1.8	2.6	2.0	1.6		
135										1.4	2.2	1.6			
140											1.8	1.2			

* Boom length noted represents range of similar lengths.

THIS CHART IS ONLY A GUIDE AND SHOULD NOT BE USED TO OPERATE THE CRANE.

The individual crane's load chart, operating instructions and other instructional plates must be read and understood prior to operating the crane

LOAD CHART

Main Boom



37 ft - 197 ft
(11,3 - 60, 0 m)



26,600 lb
(12,1 t)



20 ft
(6,2 m)



360°



Pounds

Feet	37.0	50.2	64.5	78.7	91.9	104.6	112-119	130.2	140.6	149.3	154-160	171.0	182.6	188.5	196.9
10	108.0	108.0	106.0												
15	82.0	83.0	82.0	81.0											
20	64.0	65.0	65.0	64.0	64.0	54.0	41.6								
25	49.0	51.0	50.0	51.0	48.0	47.0	39.2	34.8							
30		40.0	40.4	39.8	39.4	36.4	36.2	32.0	28.6	24.2					
35		32.6	32.6	31.8	31.8	31.6	29.6	27.6	26.4	23.2	19.6				
40		25.8	27.2	27.4	26.2	26.6	24.4	22.8	22.0	22.0	19.0	15.8	13.4	12.4	
45			22.2	22.4	22.0	22.4	20.6	19.2	18.4	18.6	18.0	15.8	13.4	12.4	10.6
50			18.4	18.6	18.2	19.2	18.2	16.2	15.6	16.0	15.4	15.2	13.4	12.4	10.6
55			14.4	15.6	15.2	16.4	17.0	13.8	13.4	14.0	13.2	13.2	13.2	12.4	10.6
60				13.2	12.8	14.0	14.8	11.8	11.4	13.0	12.0	12.4	11.6	11.8	10.4
65				11.2	10.8	12.0	12.8	10.0	9.8	11.8	11.0	11.0	10.2	10.2	10.0
70				8.0	9.2	10.2	11.0	8.8	8.4	10.4	10.2	9.6	9.6	9.0	8.8
75					7.8	8.8	9.6	8.2	7.4	9.2	9.4	8.6	8.4	7.8	7.6
80					6.6	7.6	8.4	7.6	7.0	8.0	8.4	8.0	7.4	6.8	6.6
85						7.0	7.8	7.0	6.4	7.0	7.4	7.2	6.6	6.0	5.8
90						6.4	7.2	6.6	6.0	6.0	6.6	6.4	5.8	5.2	5.0
95						6.2	6.6	6.2	5.6	5.2	6.2	5.6	5.0	4.6	4.4
100							5.8	5.6	5.2	4.4	5.4	4.8	4.4	4.0	3.6
105							5.2	4.8	4.8	3.8	4.8	4.2	3.6	3.4	3.2
110							4.6	4.2	4.4	3.2	4.2	3.6	3.0	2.8	2.6
115							3.2	3.8	3.8	2.6	3.6	3.0	2.6	2.2	2.0
120								3.2	3.4	2.2	3.0	2.6	2.0	1.6	1.6
125									3.0	1.8	2.6	2.0	1.6		
130									2.6	1.4	2.2	1.6			
135											1.8	1.2			
140											1.4				


* Boom length noted represents range of similar lengths.


THIS CHART IS ONLY A GUIDE AND SHOULD NOT BE USED TO OPERATE THE CRANE.

The individual crane's load chart, operating instructions and other instructional plates must be read and understood prior to operating the crane

LOAD CHART

Main Boom

 37 ft - 197 ft
(11,3 - 60, 0 m)

 24,200 lb
(11,0 t)

 20 ft
(6,2 m)

 360°



Pounds

Feet	37.0	50.2	64.5	78.7	91.9	104.6	112-119	130.2	140.6	149.3	154-160	171.0	182.6	188.5	196.9
10	108.0	108.0	106.0												
15	82.0	82.0	82.0	81.0											
20	64.0	65.0	64.0	64.0	61.0	54.0	41.6								
25	48.0	50.0	49.0	50.0	46.0	45.0	39.2	34.8							
30		39.2	39.2	37.8	37.6	35.0	34.4	32.0	28.6	24.2					
35		31.0	32.0	31.6	30.2	30.4	28.0	26.2	25.2	23.2	19.6				
40		24.4	25.8	26.0	24.8	25.2	23.2	21.6	20.8	20.8	19.0	15.8	13.4	12.4	
45			21.0	21.2	20.8	21.2	19.6	18.0	17.4	17.6	17.0	15.8	13.4	12.4	10.6
50			18.4	17.6	17.0	18.2	18.2	15.2	14.6	15.0	14.4	14.4	13.4	12.4	10.6
55			13.4	14.6	14.2	15.4	16.0	12.8	12.4	14.0	12.8	13.2	12.6	12.4	10.6
60				12.4	12.0	13.0	13.8	11.0	10.6	12.6	12.0	11.8	10.8	11.0	10.4
65				10.4	10.0	11.2	12.0	9.6	9.0	11.0	11.0	10.2	10.2	9.4	9.2
70				8.0	9.2	9.6	10.2	8.8	8.2	9.8	9.8	9.2	8.8	8.2	8.0
75					8.6	8.2	8.8	8.2	7.4	8.6	8.8	8.6	7.8	7.2	7.0
80					8.2	7.4	8.2	7.6	7.0	7.4	7.6	7.6	6.8	6.2	6.0
85					7.8	7.0	7.8	7.0	6.4	6.4	7.2	6.6	6.0	5.4	5.2
90						6.6	6.8	6.6	6.0	5.6	6.4	5.8	5.2	4.8	4.4
95						6.0	6.0	5.8	5.6	4.8	5.6	5.0	4.4	4.0	3.8
100							5.2	5.0	5.2	4.0	4.8	4.4	3.8	3.4	3.2
105							5.0	4.4	4.6	3.4	4.2	3.8	3.2	2.8	2.6
110							4.2	3.8	4.0	2.8	3.6	3.2	2.6	2.2	2.0
115								3.4	3.4	2.2	3.2	2.6	2.2	1.8	1.6
120								2.8	3.0	1.8	2.6	2.2	1.6		
125									2.6	1.4	2.2	1.8			
130									2.2		1.8	1.4			
135											1.4				

* Boom length noted represents range of similar lengths.

THIS CHART IS ONLY A GUIDE AND SHOULD NOT BE USED TO OPERATE THE CRANE.

The individual crane's load chart, operating instructions and other instructional plates must be read and understood prior to operating the crane

LOAD CHART

Main Boom



37 ft - 197 ft
(11,3 - 60, 0 m)



21,600 lb
(9,8 t)



20 ft
(6,2 m)



360°



Pounds

Feet	37.0	50.2	64.5	78.7	91.9	104.6	112-119	130.2	140.6	149.3	154-160	171.0	182.6	188.5	196.9
10	107.0	107.0	106.0												
15	81.0	82.0	81.0	81.0											
20	63.0	64.0	63.0	62.0	59.0	54.0	41.6								
25	47.0	48.0	47.0	47.0	46.0	42.2	39.2	34.8							
30		38.2	38.2	35.8	35.6	35.0	32.6	30.4	28.6	24.2					
35		29.2	30.6	30.6	28.6	28.8	26.4	24.6	23.8	23.2	19.6				
40		23.0	24.4	24.6	23.4	23.8	21.8	20.2	19.4	19.6	19.0	15.8	13.4	12.4	
45			19.8	21.4	19.4	20.0	19.6	16.8	16.2	16.4	15.8	15.8	13.4	12.4	10.6
50			16.2	17.8	16.0	17.0	17.4	14.0	13.6	15.0	13.8	14.0	13.4	12.4	10.6
55			12.4	15.2	13.2	14.4	15.0	11.8	11.4	13.6	12.8	12.6	11.6	11.8	10.6
60				12.8	11.0	12.2	13.0	10.4	9.6	11.8	12.0	11.0	10.8	10.2	9.8
65				11.0	9.8	10.4	11.0	9.6	8.8	10.2	10.4	9.8	9.4	8.8	8.6
70				8.0	9.2	8.8	9.6	8.8	8.2	9.0	9.2	9.0	8.2	7.6	7.4
75					8.6	8.0	8.8	8.2	7.4	7.8	8.2	7.8	7.0	6.4	6.4
80					8.2	7.4	8.2	7.6	7.0	6.8	7.6	7.0	6.2	5.6	5.4
85					7.2	7.0	7.2	7.0	6.4	5.8	6.8	6.0	5.4	4.8	4.6
90						6.6	6.2	6.0	6.0	5.0	5.8	5.4	4.6	4.2	4.0
95						5.6	5.4	5.2	5.4	4.2	5.0	4.6	4.0	3.6	3.2
100							4.8	4.6	4.6	3.4	4.4	3.8	3.4	3.0	2.6
105							4.2	4.0	4.0	2.8	3.8	3.2	2.8	2.4	2.2
110							3.6	3.4	3.6	2.4	3.2	2.6	2.2	1.8	1.6
115								2.8	3.0	1.8	2.8	2.2	1.6	1.4	
120								2.4	2.6	1.4	2.2	1.8			
125									2.2		1.8	1.4			
130									1.8		1.4				

* Boom length noted represents range of similar lengths.

THIS CHART IS ONLY A GUIDE AND SHOULD NOT BE USED TO OPERATE THE CRANE.

The individual crane's load chart, operating instructions and other instructional plates must be read and understood prior to operating the crane

LOAD CHART

Main Boom



37 ft - 197 ft
(11,3 - 60, 0 m)



19,100 lb
(8,7 t)



20 ft
(6,2 m)



360°



Pounds

Feet	37.0	50.2	64.5	78.7	91.9	104.6	112-119	130.2	140.6	149.3	154-160	171.0	182.6	188.5	196.9
10	107.0	107.0	106.0												
15	81.0	82.0	81.0	81.0											
20	61.0	63.0	62.0	61.0	56.0	54.0	41.6								
25	45.0	47.0	48.0	45.0	43.8	40.0	39.2	34.8							
30		36.0	36.2	35.8	33.6	33.6	30.8	28.8	27.6	24.2					
35		27.6	29.0	29.0	27.0	27.2	25.0	23.2	22.2	22.4	19.6				
40		21.6	22.8	23.2	22.0	22.4	21.2	18.8	18.2	18.4	17.8	15.8	13.4	12.4	
45			18.6	18.8	18.2	18.8	19.2	15.6	15.0	16.0	14.8	14.8	13.4	12.4	10.6
50			15.2	15.4	14.8	16.0	16.4	13.0	12.6	14.8	13.8	13.6	12.6	12.4	10.6
55			11.4	14.2	12.2	13.4	14.0	11.6	10.6	12.6	12.8	11.8	11.6	10.8	10.6
60				12.0	10.4	11.4	12.0	10.4	9.6	11.0	11.0	10.6	10.0	9.4	9.0
65				10.2	9.8	9.6	10.2	9.6	8.8	9.6	9.6	9.4	8.6	8.2	7.8
70				8.0	9.2	8.4	9.4	8.8	8.2	8.2	8.8	8.2	7.4	7.0	6.6
75					8.6	7.8	8.6	8.2	7.4	7.2	8.0	7.2	6.4	6.0	5.6
80					7.6	7.4	7.6	7.2	7.0	6.2	7.0	6.2	5.6	5.2	4.8
85					6.6	6.8	6.6	6.4	6.4	5.2	6.2	5.4	4.8	4.4	4.0
90						6.0	6.0	5.4	5.6	4.4	5.4	4.8	4.0	3.6	3.4
95							5.0	5.2	4.8	4.8	3.6	4.6	4.0	3.4	3.0
100								4.6	4.0	4.2	3.0	3.8	3.4	2.8	2.4
105								4.0	3.4	3.6	2.4	3.2	2.8	2.2	1.8
110								3.2	3.0	3.0	1.8	2.8	2.2	1.8	1.4
115									2.4	2.6	1.4	2.2	1.8		
120									2.0	2.2		1.8	1.4		
125										1.8		1.4			
130										1.4					

* Boom length noted represents range of similar lengths.

THIS CHART IS ONLY A GUIDE AND SHOULD NOT BE USED TO OPERATE THE CRANE.

The individual crane's load chart, operating instructions and other instructional plates must be read and understood prior to operating the crane

LOAD CHART

Main Boom



37 ft - 197 ft
(11,3 - 60, 0 m)



16,500 lb
(7,5 t)



20 ft
(6,2 m)



360°



Pounds

Feet	37.0	50.2	64.5	78.7	91.9	104.6	112-119	130.2	140.6	149.3	154-160	171.0	182.6	188.5	196.9
10	106.0	107.0	106.0												
15	81.0	82.0	81.0	80.0											
20	59.0	61.0	60.0	59.0	53.0	51.0	41.6								
25	44.0	46.0	46.0	42.2	41.4	38.2	37.4	34.8							
30		34.0	35.6	34.2	31.8	31.8	29.2	27.0	26.0	24.2					
35		25.8	27.2	27.2	25.4	25.6	23.4	21.6	20.8	21.0	19.6				
40		20.6	21.4	23.2	20.6	21.2	21.2	17.6	17.0	17.2	16.6	15.8	13.4	12.4	
45			17.4	19.0	17.0	18.0	18.0	14.6	14.0	16.0	14.8	14.8	13.4	12.4	10.6
50			14.0	15.8	13.8	16.6	15.2	12.8	11.6	13.8	13.8	12.8	12.2	12.0	10.6
55			10.4	13.2	11.4	14.0	13.2	11.6	10.6	11.8	12.0	11.4	10.6	10.2	9.8
60				11.2	9.2	11.8	11.2	10.4	9.6	10.2	10.2	10.0	9.2	8.6	8.4
65				9.4	7.8	10.2	10.2	9.6	8.8	8.8	9.4	8.8	7.8	7.4	7.0
70				8.0	7.4	8.6	9.2	8.8	8.2	7.6	8.4	7.6	6.8	6.4	6.0
75					6.8	7.8	8.0	7.8	7.4	6.4	7.4	6.6	5.8	5.4	5.0
80					4.0	7.2	6.8	6.6	6.8	5.6	6.4	5.6	5.0	4.4	4.2
85						6.4	6.0	5.8	5.8	4.6	5.6	4.8	4.2	3.8	3.4
90						5.6	5.2	5.0	5.0	3.8	4.8	4.2	3.6	3.0	2.8
95						4.6	4.4	4.2	4.4	3.2	4.0	3.6	3.0	2.4	2.2
100							3.8	3.6	3.8	2.6	3.4	2.8	2.4	2.0	1.8
105							3.2	3.0	3.2	2.0	2.8	2.4	1.8	1.4	
110							2.8	2.4	2.6	1.4	2.4	1.8	1.2		
115								2.0	2.2		1.8	1.4			
120								1.6	1.8		1.4				
125									1.4						

* Boom length noted represents range of similar lengths.

THIS CHART IS ONLY A GUIDE AND SHOULD NOT BE USED TO OPERATE THE CRANE.

The individual crane's load chart, operating instructions and other instructional plates must be read and understood prior to operating the crane

LOAD CHART

Main Boom



37 ft - 197 ft
(11,3 - 60, 0 m)



14,100 lb
(6,4 t)



20 ft
(6,2 m)



360°



Pounds

Feet	37.0	50.2	64.5	78.7	91.9	104.6	112-119	130.2	140.6	149.3	154-160	171.0	182.6	188.5	196.9
10	106.0	107.0	106.0												
15	80.0	81.0	81.0	80.0											
20	58.0	59.0	58.0	55.0	52.0	48.0	41.6								
25	41.6	45.0	43.0	41.2	39.0	38.2	35.2	32.6							
30		32.0	33.4	32.2	29.8	30.0	27.4	25.4	24.2	24.2					
35		24.2	25.6	25.6	23.8	24.2	22.6	20.2	19.4	19.6	18.8				
40		19.2	20.0	20.2	19.2	19.8	20.0	16.4	15.6	17.2	16.0	15.4	13.4	12.4	
45			16.0	16.2	15.8	16.4	16.8	14.0	12.8	15.0	14.8	13.8	12.8	12.4	10.6
50			13.0	13.2	12.8	13.8	14.2	12.8	11.6	12.8	12.8	12.4	11.6	11.0	10.6
55			9.4	10.8	10.4	11.6	12.2	11.6	10.6	10.8	11.2	10.8	9.8	9.2	9.0
60				8.8	8.4	9.6	11.0	10.4	9.6	9.2	10.2	9.2	8.4	7.8	7.6
65				7.2	7.8	9.0	9.8	9.4	8.8	8.0	8.8	8.0	7.2	6.6	6.4
70					7.4	8.4	8.4	8.2	8.2	6.8	7.6	6.8	6.0	5.6	5.4
75					6.8	7.6	7.2	7.0	7.2	5.8	6.6	5.8	5.2	4.6	4.4
80					3.4	6.6	6.6	6.0	6.2	5.0	5.8	5.0	4.4	3.8	3.6
85						5.8	5.6	5.2	5.2	4.0	5.0	4.4	3.6	3.2	3.0
90						5.0	4.8	4.4	4.6	3.2	4.2	3.6	3.0	2.6	2.2
95						4.0	4.2	3.6	3.8	2.6	3.6	3.0	2.4	2.0	1.8
100							3.6	3.0	3.2	2.0	3.0	2.4	1.8	1.4	
105							3.0	2.6	2.6	1.4	2.4	1.8	1.4		
110							2.4	2.0	2.2		1.8	1.4			
115								1.6	1.8		1.4				
120									1.4						

* Boom length noted represents range of similar lengths.

THIS CHART IS ONLY A GUIDE AND SHOULD NOT BE USED TO OPERATE THE CRANE.

The individual crane's load chart, operating instructions and other instructional plates must be read and understood prior to operating the crane

LOAD CHART

Main Boom



37 ft - 197 ft
(11,3 - 60, 0 m)



11,400 lb
(5,2 t)



20 ft
(6,2 m)



360°



Pounds

Feet	37.0	50.2	64.5	78.7	91.9	104.6	112-119	130.2	140.6	149.3	154-160	171.0	182.6	188.5	196.9
10	106.0	106.0	106.0												
15	79.0	80.0	79.0	76.0											
20	56.0	58.0	56.0	52.0	50.0	45.0	41.6								
25	39.0	42.0	41.2	39.8	36.8	36.4	33.0	30.6							
30		30.0	31.4	30.2	28.0	28.2	25.6	23.6	22.6	22.6					
35		23.2	23.8	23.8	22.0	22.6	22.6	18.6	18.0	18.4	17.4				
40		17.8	18.6	18.8	17.8	19.6	18.6	15.4	14.4	16.6	16.0	14.0	13.4	12.4	
45			14.8	15.0	14.6	17.0	15.6	14.0	12.8	14.0	14.0	13.2	12.2	12.0	10.6
50			12.0	12.2	11.6	14.4	13.2	12.8	11.6	11.8	12.2	11.6	10.6	10.0	9.6
55			8.4	10.0	9.4	12.0	12.0	11.6	10.6	10.0	10.8	9.8	9.0	8.4	8.0
60				9.2	8.4	10.0	10.4	10.0	9.6	8.4	9.2	8.4	7.6	7.0	6.8
65				8.6	7.8	9.0	9.0	8.6	8.6	7.2	8.0	7.2	6.4	5.8	5.6
70				7.4	7.4	8.0	7.8	7.4	7.4	6.0	7.0	6.2	5.4	5.0	4.6
75					6.4	7.0	6.8	6.4	6.6	5.2	6.0	5.2	4.4	4.0	3.8
80					4.8	6.0	6.0	5.4	5.6	4.2	5.2	4.4	3.8	3.2	3.0
85						5.2	5.0	4.6	4.6	3.4	4.4	3.8	3.0	2.6	2.2
90						4.4	4.4	3.8	4.0	2.8	3.6	3.0	2.4	2.0	1.6
95						3.4	3.6	3.2	3.2	2.0	3.0	2.4	1.8	1.4	
100							3.0	2.6	2.8	1.6	2.4	1.8	1.2		
105							2.6	2.0	2.2		1.8	1.4			
110							1.8	1.6	1.8		1.4				
115									1.2						


* Boom length noted represents range of similar lengths.

THIS CHART IS ONLY A GUIDE AND SHOULD NOT BE USED TO OPERATE THE CRANE.

The individual crane's load chart, operating instructions and other instructional plates must be read and understood prior to operating the crane

LOAD CHART

Main Boom

 37 ft - 197 ft
(11,3 - 60, 0 m)

 9,000 lb
(4,1 t)

 20 ft
(6,2 m)

 360°



Pounds

Feet	37.0	50.2	64.5	78.7	91.9	104.6	112-119	130.2	140.6	149.3	154-160	171.0	182.6	188.5	196.9
10	105.0	106.0	105.0												
15	78.0	79.0	78.0	74.0											
20	54.0	56.0	54.0	49.0	47.0	42.4	41.6								
25	36.2	39.4	39.6	34.8	34.4	34.0	30.8	28.4							
30		27.8	29.4	28.2	26.0	26.2	24.2	21.8	20.8	20.8					
35		21.4	22.2	24.0	20.4	21.0	21.2	17.2	16.4	18.4	17.2				
40		16.4	17.2	19.0	16.4	17.0	17.4	15.4	14.2	15.4	15.4	14.2	13.0	12.4	
45			13.6	15.2	13.6	14.0	14.4	14.0	12.8	12.8	13.2	12.6	11.4	10.8	10.4
50			10.8	12.4	12.4	12.0	13.0	12.4	11.6	10.8	11.6	10.6	9.6	9.0	8.6
55			8.2	10.2	11.4	11.0	11.2	10.6	10.6	9.0	9.8	9.0	8.0	7.6	7.2
60				9.2	9.8	9.8	9.6	9.2	9.0	7.6	8.4	7.6	6.8	6.2	6.0
65				7.8	8.4	8.6	8.4	7.8	7.8	6.4	7.2	6.4	5.6	5.2	4.8
70				6.6	7.0	7.4	7.2	6.8	6.8	5.4	6.2	5.4	4.6	4.2	3.8
75					6.0	6.2	6.2	5.6	5.8	4.4	5.2	4.6	3.8	3.2	3.0
80					5.0	5.4	5.2	4.8	4.8	3.6	4.4	3.8	3.0	2.6	2.2
85					4.2	4.6	4.4	4.0	4.0	2.8	3.8	3.0	2.2	1.8	1.6
90						3.8	3.8	3.2	3.4	2.2	3.0	2.4	1.8		
95						3.0	3.2	2.6	2.8	1.6	2.4	1.8			
100							2.6	2.0	2.2		2.0	1.4			
105							2.0	1.6	1.8		1.4				
110							1.4								

* Boom length noted represents range of similar lengths.

THIS CHART IS ONLY A GUIDE AND SHOULD NOT BE USED TO OPERATE THE CRANE.

The individual crane's load chart, operating instructions and other instructional plates must be read and understood prior to operating the crane

LOAD CHART

Main Boom



37 ft - 197 ft
(11,3 - 60, 0 m)



6,300 lb
(2,9 t)



20 ft
(6,2 m)



360°



Pounds

Feet	37.0	50.2	64.5	78.7	91.9	104.6	112-119	130.2	140.6	149.3	154-160	171.0	182.6	188.5	196.9
10	105.0	106.0	105.0												
15	76.0	78.0	77.0	72.0											
20	52.0	54.0	50.0	48.0	44.0	41.8	38.8								
25	33.6	36.6	37.0	34.8	32.0	31.8	28.6	26.4							
30		25.8	27.2	26.2	24.0	24.4	24.2	20.0	19.2	19.8					
35		19.8	20.6	20.4	18.8	19.4	19.6	17.0	15.6	17.2	17.2				
40		15.0	15.8	17.6	15.0	15.6	16.0	15.4	14.2	14.2	14.4	13.8	12.2	12.0	
45			12.4	15.0	13.6	13.2	14.2	13.6	12.8	11.6	12.4	11.4	10.4	9.8	9.4
50			9.8	12.4	12.4	12.0	12.0	11.4	11.2	9.6	10.6	9.6	8.6	8.0	7.6
55			7.6	10.2	10.6	10.6	10.2	9.8	9.6	8.0	9.0	8.0	7.0	6.6	6.2
60				8.4	9.0	9.2	9.2	8.2	8.2	6.6	7.6	6.6	5.8	5.2	5.0
65				7.0	7.6	7.8	7.8	7.0	7.0	5.4	6.4	5.6	4.6	4.2	3.8
70				5.8	6.4	6.6	6.6	6.0	5.8	4.4	5.4	4.6	3.8	3.2	3.0
75				4.8	5.4	5.6	5.6	5.0	5.0	3.6	4.4	3.6	3.0	2.4	2.2
80					4.4	4.6	4.6	4.2	4.2	2.8	3.6	3.0	2.2	1.8	1.6
85					3.6	4.0	3.8	3.4	3.4	2.2	3.0	2.4	1.6		
90						3.2	3.2	2.6	2.8	1.6	2.4	1.8			
95							2.4	2.6	2.2	2.2	1.8				
100								2.0	1.6	1.8	1.4				
105								1.6							

* Boom length noted represents range of similar lengths.

THIS CHART IS ONLY A GUIDE AND SHOULD NOT BE USED TO OPERATE THE CRANE.

The individual crane's load chart, operating instructions and other instructional plates must be read and understood prior to operating the crane

LOAD CHART

Main Boom



37 ft - 197 ft
(11,3 - 60, 0 m)



3,900 lb
(1,8 t)



20 ft
(6,2 m)



360°



Pounds

Feet	37.0	50.2	64.5	78.7	91.9	104.6	112-119	130.2	140.6	149.3	154-160	171.0	182.6	188.5	196.9
10	104.0	105.0	105.0												
15	75.0	76.0	73.0	68.0											
20	48.0	52.0	48.0	45.0	41.2	40.2	36.0								
25	31.0	34.0	34.4	33.8	29.6	29.6	26.6	24.4	17.6						
30		24.4	25.2	26.0	22.2	22.6	22.6	19.0	17.0	19.8					
35		18.2	18.8	20.6	17.2	17.8	18.0	17.0	15.6	15.8	15.8				
40		13.6	14.4	16.2	15.0	14.6	15.6	15.0	14.2	12.8	13.6	12.6	11.4	10.8	
45			11.2	13.6	13.6	13.2	13.0	12.4	12.2	10.6	11.4	10.4	9.2	8.6	8.2
50			8.6	11.2	11.8	11.4	11.0	10.4	10.2	8.6	9.4	8.4	7.4	7.0	6.6
55			6.8	9.2	9.8	10.0	9.8	8.6	8.6	7.0	7.8	7.0	6.0	5.6	5.2
60				7.6	8.0	8.4	8.2	7.2	7.2	5.6	6.6	5.6	4.8	4.4	4.0
65				6.2	6.8	7.0	7.0	6.0	6.0	4.6	5.4	4.6	3.8	3.4	3.0
70				5.2	5.6	5.8	5.8	5.0	5.0	3.6	4.4	3.6	3.0	2.4	2.2
75					4.6	4.8	4.8	4.2	4.2	2.8	3.6	3.0	2.2	1.8	1.4
80					3.8	4.0	4.0	3.4	3.4	2.0	3.0	2.2	1.4		
85					3.2	3.4	3.2	2.8	2.8	1.4	2.4	1.6			
90						2.8	2.6	2.2	2.2		1.8				
95						1.8	2.0	1.6	1.8						
100							1.6								

* Boom length noted represents range of similar lengths.

THIS CHART IS ONLY A GUIDE AND SHOULD NOT BE USED TO OPERATE THE CRANE.

The individual crane's load chart, operating instructions and other instructional plates must be read and understood prior to operating the crane

LOAD CHART

Main Boom



37 ft - 197 ft
(11,3 - 60, 0 m)



1,300 lb
(0,6 t)



20 ft
(6,2 m)



360°



Pounds

Feet	37.0	50.2	64.5	78.7	91.9	104.6	112-119	130.2	140.6	149.3	154-160	171.0	182.6	188.5
10	104.0	105.0	104.0											
15	73.0	75.0	68.0	63.0										
20	45.0	48.0	45.0	41.8	38.0	37.2	33.2							
25	28.2	31.2	31.6	31.8	27.2	27.2	26.6	22.2						
30		22.4	23.0	24.0	20.2	20.6	20.8	19.0	17.0	18.0				
35		16.4	17.0	18.8	16.6	16.4	17.4	16.6	15.6	14.4	15.2			
40		12.0	12.8	14.8	15.0	14.6	14.2	13.6	13.2	11.4	12.4	11.2	10.0	9.4
45			9.8	12.4	12.8	12.4	12.2	11.0	10.8	9.0	10.0	9.0	8.0	7.4
50			7.6	10.2	10.4	10.6	10.2	9.0	9.0	7.2	8.2	7.2	6.2	5.8
55			5.8	8.2	8.6	8.8	8.4	7.4	7.4	5.8	6.6	5.8	5.0	4.4
60				6.8	7.2	7.4	7.0	6.2	6.0	4.6	5.4	4.6	3.8	3.2
65				5.4	5.8	6.2	6.0	5.0	5.0	3.6	4.4	3.6	2.8	2.4
70				4.4	4.8	5.0	5.0	4.0	4.0	2.6	3.6	2.8	2.0	1.6
75					4.0	4.2	4.2	3.2	3.2	1.8	2.8	2.0	1.4	
80					3.2	3.4	3.4	2.6	2.6		2.2	1.4		
85					2.4	2.8	2.6	2.0	2.0		1.6			
90						2.2	2.0	1.4	1.4					
95						1.4	1.6							

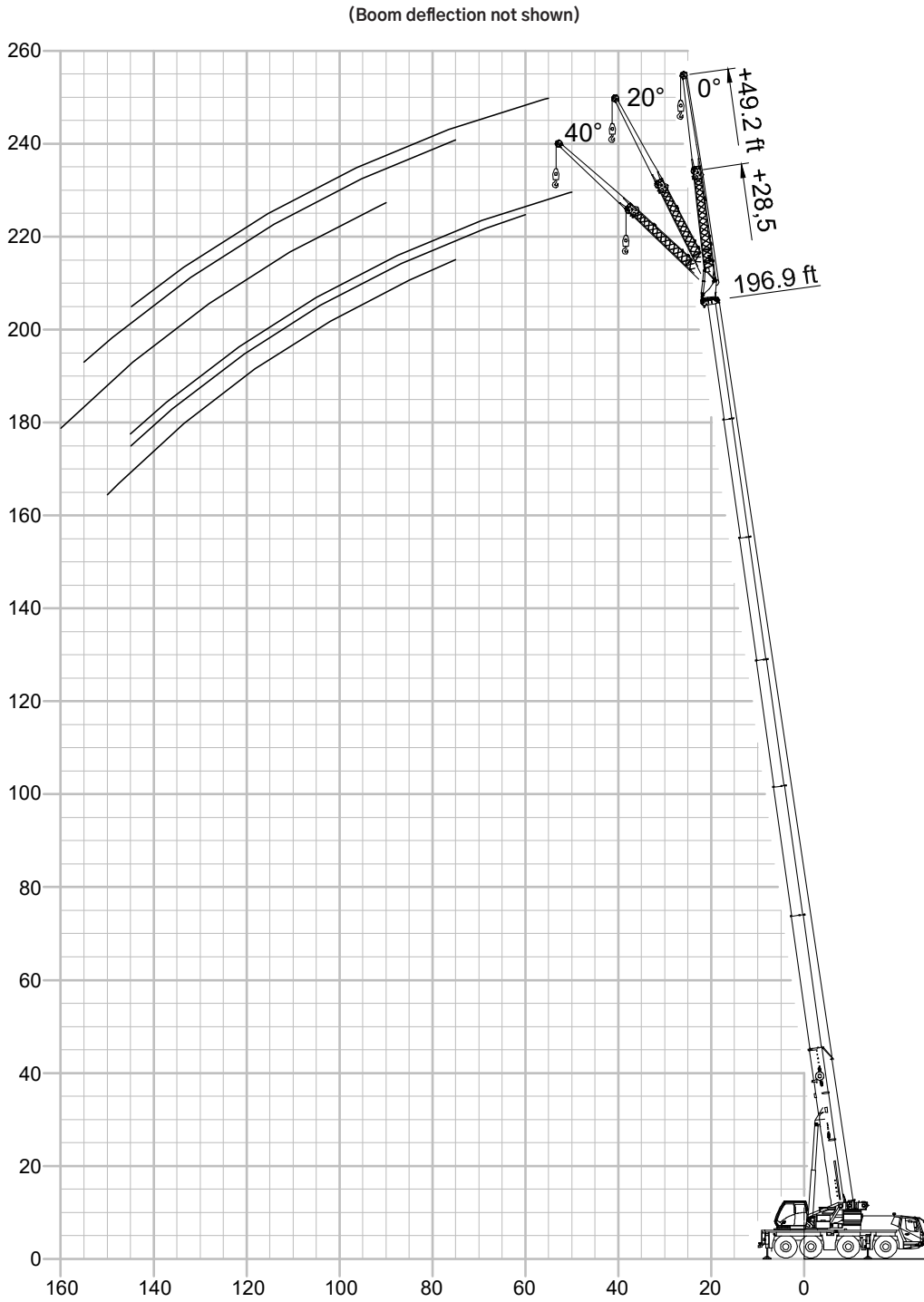
* Boom length noted represents range of similar lengths.

THIS CHART IS ONLY A GUIDE AND SHOULD NOT BE USED TO OPERATE THE CRANE.

The individual crane's load chart, operating instructions and other instructional plates must be read and understood prior to operating the crane

WORKING RANGE


Working Range Diagram with Telescopic Boom and Jib Extension




THIS CHART IS ONLY A GUIDE AND SHOULD NOT BE USED TO OPERATE THE CRANE.
The individual crane's load chart, operating instructions and other instructional plates must be read and understood prior to operating the crane

LOAD CHART

Main Boom with Jib Extension

 37 ft - 197 ft
(11,3 - 60, 0 m)

 28.5 ft
(8,7 m)

 42,100 lb
(19,1 t)

 20 ft
(6,2 m)

 360°



Pounds

Boom Length	116.9			144.1-147.5			197		
Jib Length	28.5			28.5			28.5		
Offset Degree	0	0-20	20-40	0	0-20	20-40	0	0-20	20-40
Radius									
25	17.0								
30	16.8								
35	16.4	5.6		6.2					
40	15.8	5.6	4.4	6.2					
45	14.6	5.2	4.4	6.2					
50	13.6	5.0	4.2	6.0					
55	12.8	4.8	4.2	6.0	2.8		3.6		
60	12.0	4.6	4.0	6.0	2.6		3.6		
65	11.2	4.4	4.0	6.0	2.4		3.6		
70	10.6	4.4	3.8	5.8	2.4	1.8	3.6		
75	10.0	4.2	3.8	5.8	2.2	1.8	3.6	2.6	
80	9.4	4.0	3.8	5.6	2.2	1.8	3.6	2.4	
85	9.0	4.0	3.8	5.4	2	1.8	3.6	2.4	
90	8.6	3.8	3.6	5.2	2	1.6	3.6	2.2	1.8
95	7.8	3.8	3.6	5.0	2	1.6	3.6	2.2	1.8
100	7.0	3.6	3.6	4.8	1.8	1.6	3.6	2.0	1.6
105	6.2	3.6	3.6	4.6	1.8	1.6	3.6	2.0	1.6
110	5.4	3.4	3.4	4.4	1.8	1.6	3.6	2.0	1.6
115	4.8	3.4		4.2	1.6	1.6	3.6	2.0	1.6
120	4.2	3.2		4.2	1.6	1.6	3.6	1.8	1.6
125	3.8	3.2		4.0	1.6	1.4	3.4	1.8	1.6
130	3.6	3.0		3.8	1.6	1.4	3.0	1.8	1.6
135	3.4			3.6	1.4	1.4	2.4	1.8	1.6
140	1.8			3.2	1.4	1.4	2.0	1.6	1.4
145				2.8	1.4	1.4	1.6	1.6	1.4
150				2.6	1.4	1.4			1.4
155				2.4	1.4	1.4			1.4
160				2.2	1.4	1.4			
165				2.0					
170				1.8					
175				1.4					


* Boom length noted represents range of similar lengths.


THIS CHART IS ONLY A GUIDE AND SHOULD NOT BE USED TO OPERATE THE CRANE.

The individual crane's load chart, operating instructions and other instructional plates must be read and understood prior to operating the crane

LOAD CHART

Main Boom with Jib Extension

 37 ft – 197 ft
(11,3 – 60, 0 m)

 49.2 ft
(14,9 m)

 42,100 lb
(19,1 t)

 20 ft
(6,2 m)

 360°



Pounds

Boom Length	116.9–119.4			144.1–147.5			197		
Jib Length	49.2			49.2			49.2		
Offset Degree	0	0–20	20–40	0	0–20	20–40	0	0–20	20–40
Radius									
30	8.4								
35	8.2			6.2					
40	8.0			6.2					
45	8.0			6.2					
50	7.8	2.6		6.0					
55	7.4	2.6	2.0	6.0	2.8		3.6		
60	7.2	2.4	1.8	6.0	2.6		3.6		
65	6.8	2.2	1.8	6.0	2.4		3.6		
70	6.4	2.2	1.8	5.8	2.4	1.8	3.6		
75	6.2	2.0	1.8	5.8	2.2	1.8	3.6	2.6	
80	5.8	2.0	1.6	5.6	2.2	1.8	3.6	2.4	
85	5.6	1.8	1.6	5.4	2	1.8	3.6	2.4	
90	5.4	1.8	1.6	5.2	2	1.6	3.6	2.2	1.8
95	5.2	1.8	1.6	5.0	2	1.6	3.6	2.2	1.8
100	5.0	1.6	1.6	4.8	1.8	1.6	3.6	2.0	1.6
105	4.8	1.6	1.6	4.6	1.8	1.6	3.6	2.0	1.6
110	4.6	1.6	1.6	4.4	1.8	1.6	3.6	2.0	1.6
115	4.4	1.6	1.4	4.2	1.6	1.6	3.6	2.0	1.6
120	4.2	1.4	1.4	4.2	1.6	1.6	3.6	1.8	1.6
125	4.2	1.4	1.4	4.0	1.6	1.4	3.4	1.8	1.6
130	3.8	1.4	1.4	3.8	1.6	1.4	3.0	1.8	1.6
135	3.4	1.4	1.4	3.6	1.4	1.4	2.4	1.8	1.6
140	3.0			3.2	1.4	1.4	2.0	1.6	1.4
145	2.8			2.8	1.4	1.4	1.6	1.6	1.4
150	2.6			2.6	1.4	1.4			1.4
155	2.4			2.4	1.4	1.4			1.4
160				2.2	1.4	1.4			
165				2.0					
170				1.8					
175				1.4					


* Boom length noted represents range of similar lengths.


THIS CHART IS ONLY A GUIDE AND SHOULD NOT BE USED TO OPERATE THE CRANE.


The individual crane's load chart, operating instructions and other instructional plates must be read and understood prior to operating the crane

LOAD CHART

Main Boom with Jib Extension

 37 ft - 197 ft
(11,3 - 60, 0 m)

 28.5 ft
(8,7 m)

 19,100 lb
(8,7 t)

 20 ft
(6,2 m)

 360°



 Pounds


Boom Length	116.9-119.4			144.1-147.5			197		
Jib Length	28.5			28.5			28.5		
Offset Degree	0	0-20	20-40	0	0-20	20-40	0	0-20	20-40
Radius									
25	17.0								
30	16.8								
35	16.4	11.4		11.4					
40	15.8	10.8	8.4	11.4					
45	14.6	10.4	8.2	11.0	9.6				
50	13.6	10.0	8.0	10.4	9.0	7.8	5.4		
55	12.2	9.6	8.0	10.0	8.6	7.8	5.4		
60	10.4	9.2	7.8	9.4	8.2	7.6	5.4	5.4	
65	9.0	9.0	7.8	8.8	8.0	7.2	5.4	5.4	
70	7.8	7.8	7.6	8.0	7.6	7.0	5.4	5.4	
75	7.0	6.8	7.4	7.4	7.2	6.8	5.0	5.0	5.4
80	6.6	6.4	6.4	6.8	6.8	6.6	4.2	4.2	5.0
85	6.2	6.0	6.0	6.0	6.0	6.4	3.4	3.4	4.2
90	5.8	5.6	5.6	5.2	5.2	5.6	2.8	2.8	3.4
95	5.2	5.2	5.4	4.4	4.4	5.0	2.2	2.2	2.8
100	4.4	4.6	5.0	3.8	3.8	4.2	1.8	1.8	2.2
105	3.8	4.0	4.2	3.2	3.2	3.6			1.8
110	3.4	3.4	3.6	2.6	2.6	3.0			
115	2.8	3.0		2.2	2.2	2.4			
120	2.4	2.4		1.8	1.8	2.0			
125	2.0	2.0		1.4	1.4	1.6			
130	1.6	1.8							
135	1.4								


* Boom length noted represents range of similar lengths.

THIS CHART IS ONLY A GUIDE AND SHOULD NOT BE USED TO OPERATE THE CRANE.
The individual crane's load chart, operating instructions and other instructional plates must be read and understood prior to operating the crane

LOAD CHART

Main Boom with Jib Extension

 37 ft - 197 ft
(11,3 - 60, 0 m)

 49.2 ft
(14,9 m)

 19,100 lb
(8,7 t)

 20 ft
(6,2 m)

 360°



Pounds

Boom Length	116.9-119.4			144.1-147.5			188.5		
Jib Length	49.2			49.2			49.2		
Offset Degree	0	0-20	20-40	0	0-20	20-40	0	0-20	20-40
Radius									
30	8.4								
35	8.2			6.2					
40	8.0			6.2					
45	8.0			6.2					
50	7.8	5.6		6.0			4.4		
55	7.4	5.2	4.2	5.8	5.0		4.4		
60	7.2	5.2	4.0	5.8	5.0		4.4		
65	6.8	5.0	4.0	5.8	4.8		4.4		
70	6.4	4.8	3.8	5.8	4.6	3.8	4.4		
75	6.2	4.6	3.8	5.6	4.6	3.8	4.4	4.4	
80	5.8	4.4	3.8	5.6	4.4	3.8	4.4	4.4	3.8
85	5.4	4.4	3.8	5.4	4.2	3.6	4.0	4.0	3.6
90	4.8	4.2	3.6	5.2	4.2	3.6	3.2	3.2	3.6
95	4.6	4.0	3.6	4.8	4.2	3.6	2.6	2.6	3.6
100	4.4	3.8	3.6	4.2	4.0	3.6	2.2	2.2	3.2
105	4.2	3.8	3.6	3.6	3.6	3.6	1.6	1.6	2.6
110	4.0	3.6	3.4	3.0	3.0	3.6			2.2
115	3.4	3.4	3.4	2.6	2.6	3.2			1.6
120	3.0	3.0	3.4	2.2	2.2	2.8			
125	2.6	2.6	3.0	1.8	1.8	2.4			
130	2.2	2.2	2.6	1.4	1.4	1.8			
135	1.8	1.8	2.2			1.4			
140	1.6	1.6							

* Boom length noted represents range of similar lengths.

THIS CHART IS ONLY A GUIDE AND SHOULD NOT BE USED TO OPERATE THE CRANE.
The individual crane's load chart, operating instructions and other instructional plates must be read and understood prior to operating the crane

SPECIFICATIONS

Superstructure



Boom

37 ft – 197 ft (11,3 m to 60,0 m) seven section TWIN-LOCK® boom.
Maximum tip height 207 ft (63 m).



Boom elevation

1 cylinder with safety valve, boom angle from -1,5° to 83°.



Load moment and independent anti-two block system

Load moment and independent anti-two block system with audio visual warning and control lever lock-out. These systems provide graphic display of boom angle, length, radius, tip height, relative load moment, maximum permissible load, load indication and warning of impending two-block condition with lock-out hoist function.



Cab

Aluminium, tiltable (approx. 20°), full vision, safety glass, adjustable operator's seat with suspension, engine-independent heater. Armrest-integrated crane controls. Ergonomically arranged instrumentation and crane operating controls. Drive/steer controls.



Slewing

2 slewing gears with axial piston motors, planetary gears, automatic break.



Counterweight

42,100 lb (19.1 t) total consisting of various sections. 39,400 lb (17.9 t) can be hydraulically removed. Hydraulic removal system operated from crane cab.



Hydraulic system

2 separate pump circuits operating in an open circuit with 1 axial piston variable displacement pump (load sensing) and 1 geared constant delivery pump for slewing. Thermostatically controlled oil cooler.
Tank capacity: 185 gal (700 l).



Control system

Full electronic control of all crane movements using electrical control levers with automatic reset to zero. Integrated with the LMI and engine management system by CAN-BUS. Crane Control System (CCS) with graphic display.



Hoist

Axial piston motor with planetary gear and brake. Drum rotation indicator.

* Optional equipment

- Bi-fold swingaway, 28.5–49 ft (8,7/15 m) with hydraulically offset and luffing under load (0°–40°), controlled from the operator's cab
- Bi-fold swingaway, 28.5 – 49 ft. (8,7/15 m), manual offset 0°, 20°, 40°
- Auxiliary hoist

SPECIFICATIONS

Carrier



Chassis

Special 4-axle chassis, all-welded torsion-resistant box type construction in high strength steel.



Outriggers

4 hydraulically telescoping beams with vertical cylinders and outrigger pads. Independent horizontal and vertical movement control on each side of carrier and from the crane operator's cab. Electronic level indicator with automatic levelling system.



Engine

Mercedes Benz OM470LA, diesel, 6 cylinders, water cooled, turbocharged, 400 HP (300 kW) at 1600 rpm (80/1269 EWG fan loose). Max. torque: 1475 ft/lb (2000 Nm) at 1300 rpm. Fuel tank: 53 + 53 gal (200 l + 200 l). Engine emission: EUROMOT 5 / EPA / CARB Tier 4 final (non road) – optional EUROMOT 3a / EPA / CARB Tier 3 (non road).



Transmission

Mercedes G 230 – 12 forward and 2 reverse speeds. Single speed transfer case with inter-axle differential lock.



Drive/Steer

8 x 4 x 8



Axle lines

4 axle lines, axle lines 1, 2, 3 and 4 steered, axle line 3 and 4 driven.



Suspension

MEGATRAK®. All wheels with independent hydropneumatic suspension and hydraulic lockout. Longitudinal and transverse level control with automatic on-highway levelling system. Range: + 7 in / - 5 in (+170 mm/-130 mm).



Tires

(8) 385/95 R25 (14.00 R25)



Steering

Dual circuit, hydraulic power assisted steering with emergency steering pump. Axle lines 1, 2 and 4 steer on highway. Separate electronic hydraulic (steer by wire) steering of the 2nd, 3rd and 4th axle line for all wheel steering and crabbing.



Brakes

Service brake: pneumatic dual circuit drum brakes acting on all wheels, air dryer. **Permanent brake:** exhaust brake and constant throttle brake. **Parking brake:** pneumatically operated spring-loaded brake acting on axle lines 2, 3 and 4.



Electrical system

Three-phase alternator 28 V/100A, 2 batteries 12 V/170 Ah. Lighting system and signals 24 V.

* Optional equipment

- Drive/steer: 8 x 6 x 8
- Electric and hydraulic driveline retarder
- 8 tires, 445/95 R25 (16.00 R25) – Vehicle width 8.5 ft (2,59 m)
- 8 tires, 525/80 R25 (20.5 R25) – Vehicle width 9.4 ft (2,85 m)
- MAXbase asymmetrical outrigger system

SYMBOLS GLOSSARY



Axles



Counterweight



Main hoist



Outriggers



Axle load



Crane functions



Auxiliary hoist



Radius



Boom



Crane travel



Hookblock/Capacity



Slewing/Working range



Boom elevation



Drive/Steer



Hydraulic system



Speed



Boom telescoping



Electrical system



Lattice extension



Suspension



Brakes



Engine



Lattice extension



Transmission/Gear



Cab



Free on wheels



Luffing jib



Travel speed



Carrier frame



Gradeability



Low range



Tires



NOTES

The Manitowoc Company, Inc.

Regional headquarters

Americas

Milwaukee, Wisconsin, USA
Tel: +1 414 760 4600

Shady Grove, Pennsylvania, USA
Tel: +1 717 597 8121

Europe and Africa

Dardilly, France – TOWERS
Tel: +33 (0) 4 72 18 20 20

Wilhelmshaven, Germany – MOBILE
Tel: +49 (0) 4421 294 0

APAC

Shanghai, China
Tel: +86 21 6457 0066

Singapore
Tel: +65 6264 1188

Middle East and India

Dubai, UAE
Tel: +971 4 8862677

© 2024 The Manitowoc Company, Inc.
Form No. GMK4080L PG
Part No. -- /.025M/0324

This document is non-contractual. Constant improvement and engineering progress make it necessary that we reserve the right to make specification, equipment, and price changes without notice. Illustrations shown may include optional equipment and accessories and may not include all standard equipment.



[manitowoc.com](https://www.manitowoc.com)