

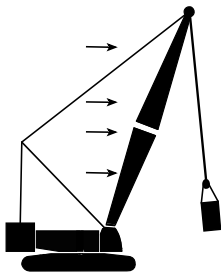
Wind Conditions

Jib No. 117 on
Boom No. B10:290

General Information

- A. Judgment and experience of qualified operators, job planners, and supervisors must be used to compensate for affect of wind on lifted load, boom, and jib by reducing ratings, reducing operating speeds, or a combination of both. Failing to observe this precaution can cause crane to tip or boom and jib to collapse. Death or serious injury to personnel can result.
- B. Wind speed (to include wind gusts) must be monitored by job planners and supervisors. *Be aware that wind speed at jib point can be greater than wind speed at ground level. Also be aware that the larger the sail area of the load, the greater the wind's affect on the load.*
- C. Wind adversely affects lifting capacity and stability as shown below. The result could be loss of control over the load and crane, even if the load is within the crane's capacity.
- D. As a general rule, ratings and operating speeds must be reduced when: ***Wind causes load to swing forward past allowable operating radius or sideways past either boom hinge pin.***

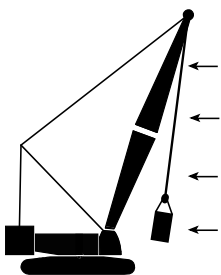
How Wind Affects a Crane



Forward stability is affected by wind on the rear of the boom and jib. Wind applies a force to the boom, jib, and load that adds to the crane's overturning moment. This action has the same effect as adding load to the hook.

The wind's affect on the rear of the load increases load radius. This condition can result in an overload hazard, possibly causing the crane to tip or the boom and jib to collapse.

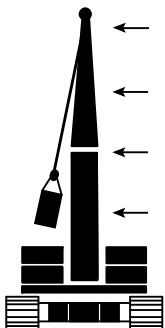
To avoid this hazard, reduce operating speeds and load (see appropriate table for maximum wind speed).



Backward stability is affected by wind on the front of the boom and jib. This condition is especially dangerous when the boom is at or near the maximum angle when operating without load.

Wind forces on the front of the boom and jib reduce the normal forward tipping effect of the boom and jib. The crane can tip or the boom and jib can collapse if this condition is not avoided.

The boom or jib can buckle and collapse if the load contacts the boom or jib.



Boom and jib strength is affected the most when the wind acts on the side of the boom and jib.

The wind's affect on the side of the load can cause the load to swing out past the boom hinge pin. This condition can result in excessive side load forces on the boom and jib, possibly causing the crane to tip or the boom and jib to collapse.

To avoid this hazard, reduce operating speeds and load (see appropriate table for maximum wind speed).

Wind Conditions

MLC90A-1

Jib No. 117 on
Boom No. B10:290

In Service

Operation is permitted in steady winds or gusts up to the maximum wind speed given in the ***In Service*** portion of Table 1 thru 14, provided the lifted load does not exceed capacity chart percentage.

Wind speed to be measured at jib point elevation.

Out of Service

Operation is not permitted and ***Out of Service Conditions*** must be followed when wind speed exceeds maximum value listed in the ***In Service*** portion of Table 1 thru 14 for given configuration.

Out of Service Conditions

Parking Position - Park crane (upper in-line with crawlers) with load blocks, hooks, and weight ball on ground or secured and position boom at 70°.

Ground Position - Lower boom and jib onto blocking at ground level.

REFERENCE ONLY

Wind Conditions

Jib No. 117 on
Boom No. B10:290

Table 1

Boom Length m (ft)	19,0 (62.3)			
Jib Length m (ft)	9,1 (30.0)	12,2 (40.0)	15,2 (50.0)	18,3 (60.0)
Percent of Capacity Chart	Maximum Permitted In Service Wind Speed m/s (mph)			
100	16 (35)	14 (30)	11 (25)	11 (25)
90	16 (35)	16 (35)	16 (35)	14 (30)
80	16 (35)	16 (35)	16 (35)	16 (35)
Condition	Maximum Permitted Out of Service Wind Speeds m/s (mph)			
Parking Position	22 (50)	22 (50)	22 (50)	22 (50)
Ground Position	When maximum Parking Position wind speed is exceeded			

Table 2

Boom Length m (ft)	22,0 (72.2)			
Jib Length m (ft)	9,1 (30.0)	12,2 (40.0)	15,2 (50.0)	18,3 (60.0)
Percent of Capacity Chart	Maximum Permitted In Service Wind Speed m/s (mph)			
100	16 (35)	14 (30)	11 (25)	11 (25)
90	16 (35)	16 (35)	16 (35)	14 (30)
80	16 (35)	16 (35)	16 (35)	16 (35)
Condition	Maximum Permitted Out of Service Wind Speeds m/s (mph)			
Parking Position	22 (50)	22 (50)	22 (50)	22 (50)
Ground Position	When maximum Parking Position wind speed is exceeded			

Wind Conditions

MLC90A-1

Jib No. 117 on
Boom No. B10:290

Table 3

Boom Length m (ft)	25,0 (82.0)			
Jib Length m (ft)	9,1 (30.0)	12,2 (40.0)	15,2 (50.0)	18,3 (60.0)
Percent of Capacity Chart	Maximum Permitted In Service Wind Speed m/s (mph)			
100	16 (35)	14 (30)	11 (25)	11 (25)
90	16 (35)	16 (35)	16 (35)	14 (30)
80	16 (35)	16 (35)	16 (35)	16 (35)
Condition	Maximum Permitted Out of Service Wind Speeds m/s (mph)			
Parking Position	22 (50)	22 (50)	22 (50)	22 (50)
Ground Position	When maximum Parking Position wind speed is exceeded			

Table 4

Boom Length m (ft)	28,0 (91.9)			
Jib Length m (ft)	9,1 (30.0)	12,2 (40.0)	15,2 (50.0)	18,3 (60.0)
Percent of Capacity Chart	Maximum Permitted In Service Wind Speed m/s (mph)			
100	16 (35)	14 (30)	11 (25)	11 (25)
90	16 (35)	16 (35)	16 (35)	14 (30)
80	16 (35)	16 (35)	16 (35)	16 (35)
Condition	Maximum Permitted Out of Service Wind Speeds m/s (mph)			
Parking Position	22 (50)	22 (50)	22 (50)	22 (50)
Ground Position	When maximum Parking Position wind speed is exceeded			

Wind Conditions

Jib No. 117 on
Boom No. B10:290

Table 5

Boom Length m (ft)	31,0 (101.7)			
Jib Length m (ft)	9,1 (30.0)	12,2 (40.0)	15,2 (50.0)	18,3 (60.0)
Percent of Capacity Chart	Maximum Permitted In Service Wind Speed m/s (mph)			
100	16 (35)	14 (30)	11 (25)	11 (25)
90	16 (35)	16 (35)	16 (35)	14 (30)
80	16 (35)	16 (35)	16 (35)	16 (35)
Condition	Maximum Permitted Out of Service Wind Speeds m/s (mph)			
Parking Position	22 (50)	22 (50)	22 (50)	22 (50)
Ground Position	When maximum Parking Position wind speed is exceeded			

Table 6

Boom Length m (ft)	34,0 (111.5)			
Jib Length m (ft)	9,1 (30.0)	12,2 (40.0)	15,2 (50.0)	18,3 (60.0)
Percent of Capacity Chart	Maximum Permitted In Service Wind Speed m/s (mph)			
100	16 (35)	14 (30)	11 (25)	11 (25)
90	16 (35)	16 (35)	16 (35)	14 (30)
80	16 (35)	16 (35)	16 (35)	16 (35)
Condition	Maximum Permitted Out of Service Wind Speeds m/s (mph)			
Parking Position	22 (50)	22 (50)	22 (50)	22 (50)
Ground Position	When maximum Parking Position wind speed is exceeded			

Wind Conditions

MLC90A-1

Jib No. 117 on
Boom No. B10:290

Table 7

Boom Length m (ft)	37,0 (121.4)			
Jib Length m (ft)	9,1 (30.0)	12,2 (40.0)	15,2 (50.0)	18,3 (60.0)
Percent of Capacity Chart	Maximum Permitted In Service Wind Speed m/s (mph)			
100	16 (35)	14 (30)	11 (25)	11 (25)
90	16 (35)	16 (35)	14 (30)	14 (30)
80	16 (35)	16 (35)	16 (35)	14 (30)
Condition	Maximum Permitted Out of Service Wind Speeds m/s (mph)			
Parking Position	22 (50)	22 (50)	22 (50)	22 (50)
Ground Position	When maximum Parking Position wind speed is exceeded			

Table 8

Boom Length m (ft)	40,0 (131.2)			
Jib Length m (ft)	9,1 (30.0)	12,2 (40.0)	15,2 (50.0)	18,3 (60.0)
Percent of Capacity Chart	Maximum Permitted In Service Wind Speed m/s (mph)			
100	16 (35)	11 (25)	11 (25)	11 (25)
90	16 (35)	14 (30)	14 (30)	14 (30)
80	16 (35)	16 (35)	14 (30)	14 (30)
Condition	Maximum Permitted Out of Service Wind Speeds m/s (mph)			
Parking Position	22 (50)	22 (50)	20 (45)	20 (45)
Ground Position	When maximum Parking Position wind speed is exceeded			

Wind Conditions

Jib No. 117 on
Boom No. B10:290

Table 9

Boom Length m (ft)	43,0 (141.1)			
Jib Length m (ft)	9,1 (30.0)	12,2 (40.0)	15,2 (50.0)	18,3 (60.0)
Percent of Capacity Chart	Maximum Permitted In Service Wind Speed m/s (mph)			
100	14 (30)	11 (25)	11 (25)	11 (25)
90	14 (30)	14 (30)	14 (30)	14 (30)
80	14 (30)	14 (30)	14 (30)	14 (30)
Condition	Maximum Permitted Out of Service Wind Speeds m/s (mph)			
Parking Position	22 (50)	20 (45)	20 (45)	20 (45)
Ground Position	When maximum Parking Position wind speed is exceeded			

Table 10

Boom Length m (ft)	46,0 (150.9)			
Jib Length m (ft)	9,1 (30.0)	12,2 (40.0)	15,2 (50.0)	18,3 (60.0)
Percent of Capacity Chart	Maximum Permitted In Service Wind Speed m/s (mph)			
100	14 (30)	11 (25)	11 (25)	9 (20)
90	14 (30)	14 (30)	14 (30)	14 (30)
80	14 (30)	14 (30)	14 (30)	14 (30)
Condition	Maximum Permitted Out of Service Wind Speeds m/s (mph)			
Parking Position	20 (45)	20 (45)	18 (40)	18 (40)
Ground Position	When maximum Parking Position wind speed is exceeded			

Wind Conditions

MLC90A-1

Jib No. 117 on
Boom No. B10:290

Table 11

Boom Length m (ft)	49,0 (160.8)			
Jib Length m (ft)	9,1 (30.0)	12,2 (40.0)	15,2 (50.0)	18,3 (60.0)
Percent of Capacity Chart	Maximum Permitted In Service Wind Speed m/s (mph)			
100	11 (25)	11 (25)	11 (25)	11 (25)
90	14 (30)	14 (30)	14 (30)	11 (25)
80	14 (30)	14 (30)	14 (30)	11 (25)
Condition	Maximum Permitted Out of Service Wind Speeds m/s (mph)			
Parking Position	18 (40)	18 (40)	18 (40)	18 (40)
Ground Position	When maximum Parking Position wind speed is exceeded			

Table 12

Boom Length m (ft)	52,0 (170.6)			
Jib Length m (ft)	9,1 (30.0)	12,2 (40.0)	15,2 (50.0)	18,3 (60.0)
Percent of Capacity Chart	Maximum Permitted In Service Wind Speed m/s (mph)			
100	11 (25)	11 (25)	11 (25)	11 (25)
90	14 (30)	14 (30)	11 (25)	11 (25)
80	14 (30)	14 (30)	11 (25)	11 (25)
Condition	Maximum Permitted Out of Service Wind Speeds m/s (mph)			
Parking Position	18 (40)	18 (40)	18 (40)	18 (40)
Ground Position	When maximum Parking Position wind speed is exceeded			

Wind Conditions

Jib No. 117 on
Boom No. B10:290

Table 13

Boom Length m (ft)	55,0 (180.4)			
Jib Length m (ft)	9,1 (30.0)	12,2 (40.0)	15,2 (50.0)	18,3 (60.0)
Percent of Capacity Chart	Maximum Permitted In Service Wind Speed m/s (mph)			
100	11 (25)	11 (25)	11 (25)	11 (25)
90	14 (30)	11 (25)	11 (25)	11 (25)
80	14 (30)	14 (30)	11 (25)	11 (25)
Condition	Maximum Permitted Out of Service Wind Speeds m/s (mph)			
Parking Position	18 (40)	16 (35)	14 (30)	14 (30)
Ground Position	When maximum Parking Position wind speed is exceeded			

Table 14

Boom Length m (ft)	58,0 (190.3)			
Jib Length m (ft)	9,1 (30.0)	12,2 (40.0)	15,2 (50.0)	18,3 (60.0)
Percent of Capacity Chart	Maximum Permitted In Service Wind Speed m/s (mph)			
100	11 (25)	11 (25)	9 (20)	9 (20)
90	11 (25)	11 (25)	11 (25)	11 (25)
80	14 (30)	11 (25)	11 (25)	11 (25)
Condition	Maximum Permitted Out of Service Wind Speeds m/s (mph)			
Parking Position	18 (40)	16 (35)	14 (30)	14 (30)
Ground Position	When maximum Parking Position wind speed is exceeded			