

# Center of Gravity

Boom No. B10:76A

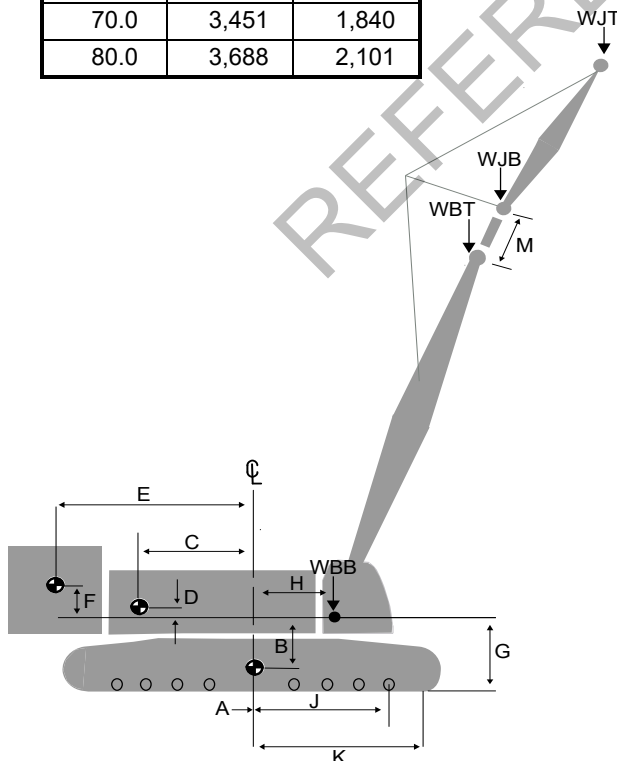
# MLC200

REFERENCE DIMENSIONS (in.)	
G	95.6
H	60.0
J	114.0
K	141.0
M	1.0
N	109.7
48 in. Pad	
P	40.5
R	43.8
T	47.2

WEIGHT AND CENTER OF GRAVITY		
	Dimension (in.)	Weight (lb)
SERIES 1		
A	0.0	100,207
B	72.6	
C	35.4	69,077
D	11.9	
E	179.4	114,625
F	-22.3	
SERIES 2		
A	0.0	159,399
B	71.7	
C	35.4	69,077
D	11.9	
E	179.4	149,645
F	-12.9	
SERIES 3		
A	0.0	159,399
B	71.7	
C	35.4	69,077
D	11.9	
E	179.4	184,665
F	-2.9	

LATTICE WEIGHTS		
Boom Length (ft)	Boom No. B10:76A	
	WBB (lb)	WBT (lb)
65.6	14,395	14,579
75.5	15,535	15,202
85.3	16,310	15,508
95.1	17,374	16,209
105.0	17,767	16,324
114.8	18,820	17,036
124.7	19,429	17,518
134.5	20,460	18,254
144.4	20,616	18,517
154.2	21,661	19,239
164.0	22,209	19,784
173.9	23,242	20,518
183.7	23,302	20,882
193.6	24,351	21,600
203.4	24,869	22,176
213.3	25,908	22,904
223.1	26,115	23,551
232.9	27,159	23,370
242.8	27,652	23,973
252.6	28,690	24,701
262.5	28,650	25,171
272.3	29,765	25,819
282.2	30,247	26,434
292.0	31,291	27,156

LATTICE WEIGHTS		
Jib Length (ft)	Jib No. 134	
	WJB (lb)	WJT (lb)
30.0	2,710	742
40.0	2,889	1,061
50.0	3,090	1,357
60.0	3,304	1,640
70.0	3,451	1,840
80.0	3,688	2,101



Note 1: Weight of all load blocks, hooks, weight ball, slings, hoist lines, etc., beneath boom and jib point sheaves is not considered part of boom and jib weights. All items suspended from boom or jib must be considered part of the load.

Note 2: Consult proper crane capacity chart for lifting capacities and allowable boom and jib combinations.

Note 3: If equipped with upper boom point, add 950 lb to WBT.

**Not to be used for crane rating purposes.**

