

**GROVE®**

# GHC200

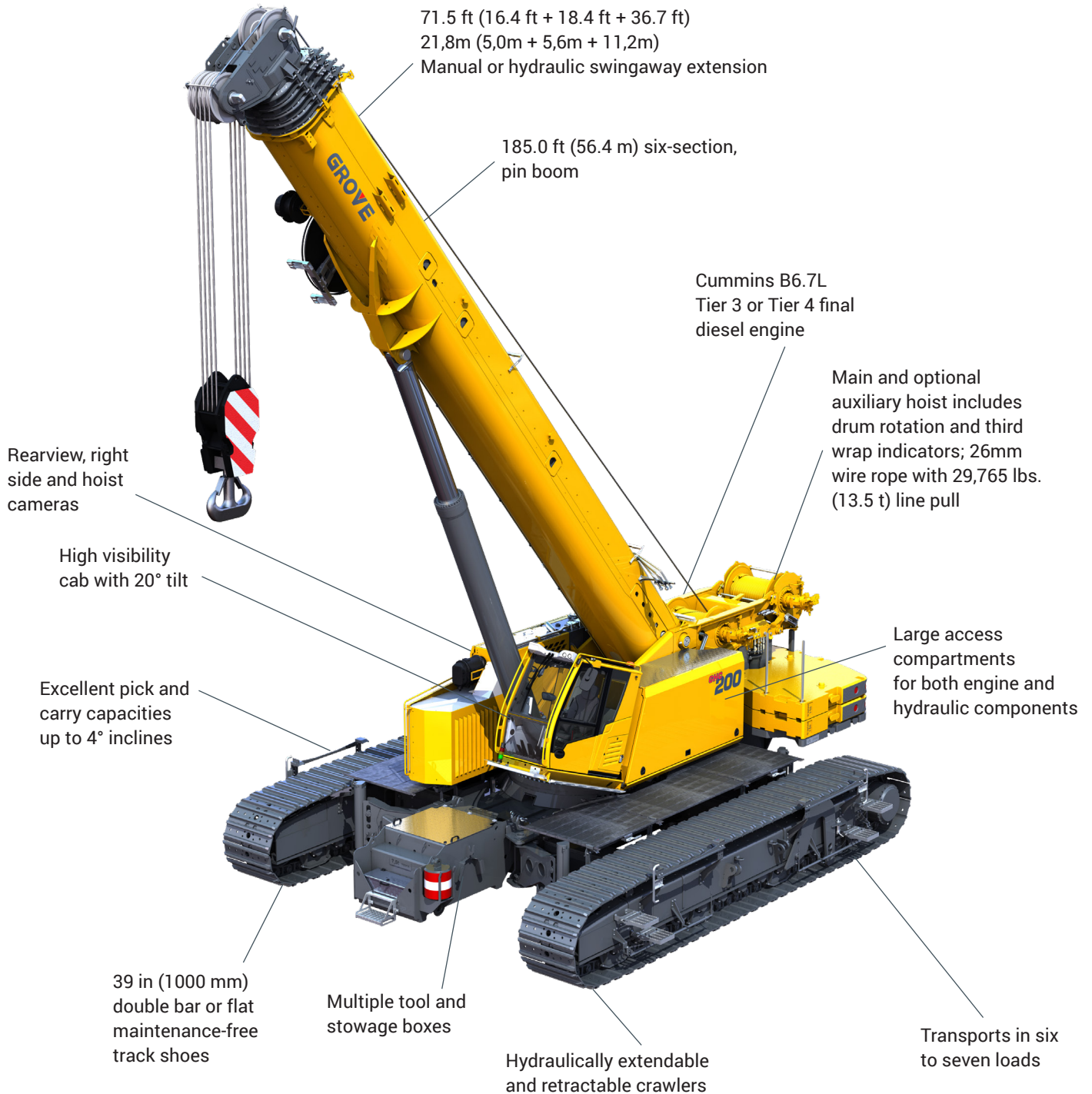
**Capacity:** 200 USt (160 t)

**Main boom:** 185 ft (56,4 m)

**Maximum boom extension:** 71.5 ft (16.4 ft + 18.4 ft + 36.7 ft)

21,8 m (5,0 m + 5,6 m + 11,2 m)

**Maximum tip height:** 265.7 ft (81,0 m)



# GHC200



43.0 ft – 185.0 ft



108,045 lb + 33,075 lb



100%



360°



Pounds

Radius (ft)	Main Boom Length (ft)										
	43.0	56.8	70.2	84.3	98.4	111.9	126.0	143.0	156.2	165.0	185.0
8	352.7 *										
10	346.9 *	314.4 *	289.3	230.7							
15	293.4	274.6	245.3	218.4	182.7						
20	237.4	227.1	213.9	195.7	165.7	137.8	102.3				
25	191.9	188.6	185.0	175.1	145.0	132.1	89.2	72.7			
30	148.3	146.1	146.2	143.6	128.5	122.7	77.6	66.5	65.0	55.8	
35		113.4	113.9	115.9	113.7	112.8	70.4	61.2	58.4	52.6	
40		91.4	91.9	93.8	94.7	97.5	64.9	56.8	52.7	49.4	39.8
45		75.8	76.3	78.0	78.8	82.2	60.0	52.8	47.8	46.2	37.6
50			64.4	66.0	66.9	70.2	55.9	49.4	43.3	42.9	35.3
55			55.2	56.7	57.5	60.6	52.3	46.3	39.6	39.9	32.9
60				49.3	50.1	53.2	49.0	43.6	36.1	37.0	30.6
65				43.2	44.0	46.9	46.2	41.0	33.2	34.3	28.6
70				38.2	38.9	41.8	43.3	38.5	30.4	31.9	26.6
75					34.6	37.5	38.9	36.4	28.0	29.6	24.8
80					30.9	33.7	35.2	34.4	25.8	27.5	23.2
85						30.5	31.9	32.2	23.8	25.6	21.7
90						27.7	29.1	29.4	22.4	23.9	20.3
95						25.2	26.6	26.9	21.1	22.3	18.9
100						23.5	24.3	24.7	19.9	20.8	17.7
105								22.3	22.7	18.8	16.5
110								19.8	20.9	17.8	15.5
115									19.2	16.9	14.4
120									17.7	16.0	13.5
125									16.2	15.1	12.6
130										14.4	11.7
135										13.6	10.9
140										13.4	11.3
145											10.2
150											9.7
155											9.3
160											9.1
165											8.2
											7.5
											6.9

PRELIMINARY

