



Liftcrane Jib Capacities

54,900 LB. Crane Counterweight
14,700 LB. Carbody Counterweight
Extended Position Crawlers
360 Degree Rating

**Meets
ANSI B30.5
Requirements**



8000 SERIES 3

LIFTING CAPACITIES:

- Chart supplements liftcrane boom capacity chart **80-814M3420R0-MBS3**. Lifting capacities for various boom lengths, jib lengths and jib operating radii are for freely suspended loads.
- Capacities do not exceed 75% of minimum tipping loads. Capacities based on factors other than machine stability such as structural competence are shown by asterisk * in the charts.
- The total load that can be lifted over a jib is limited by the rated jib loads.
- Attempting to lift more than rated loads may cause machine to tip or collapse. Do not tip machine to determine capacity.
- Do not attempt to lift where no radius on load chart is listed as crane may tip or collapse.
- Weight of hooks, hook blocks, slings and other lifting devices beneath boom and jib point sheaves are part of the total load. Their total weight must be subtracted from the rated load to obtain the weight that can be lifted.
- Load radius is horizontal distance from axis of rotation to center of gravity of the freely suspended load. Boom angle is angle between horizontal and centerline of boom butt and inserts, and is an indication of radius. In all cases, operating radius shall govern capacity.
- Least stable position is over the side.
- Jib point elevation is vertical distance from ground level to centerline of jib point shaft.
- Lifting capacities listed apply only to the machine as originally manufactured and designed. Modifications to this machine or use of equipment other than that specified can reduce operating capacity.
- Machine travel with load (pick and carry).

A. Travel with crane upperworks in-line with crawlers. Grade in any direction must not exceed 1 percent (0.5 degrees).

B. Travel surface must be firm, level and uniformly supporting. Capacity charts are based on static conditions; therefore judgment must be used to allow for dynamic effects of traveling with load. Carry load as close to ground as possible. Stabilize load with taglines. Travel slowly and smoothly to avoid shock loading boom, jib and rigging.

OPERATING CONDITION:

- The machine must be reeved and set-up as stated in the Operators Manual. If this manual is missing, obtain replacement.
 - Boom backstops are required for all boom lengths.
 - Gantry must be fully raised position for all operation.
 - Crawlers must be fully extended and be locked in position.
 - The crane must be leveled to within 1% on a firm supporting surface.
 - Refer to operators manual for operating guidelines.

Maximum Boom and Jib Lengths Lifted Unassisted			
Over End of Blocked Crawlers		Over End of Crawlers	
Boom Length	Jib Length	Boom Length	Jib Length
200 ft. (a)	—	200 ft. (a)	—
190 ft.	—	190 ft.	—
180 ft.	60 ft.	170 ft.	60 ft.

Load block, hook and weight ball on ground at start.
(a) Auxiliary sheave (upper point) cannot be attached on 200 ft. boom. Jibs can only be mounted on 80 ft. to 180 ft. booms.

- Front and rear load hoist drum wire rope: 7/8 inch, 6 x 25, FI, IWRC C/O, Minimum breaking strength: 79,586 lbs. Front Drum: 869 feet, Rear Drum: 673 feet. Load block, hook and weight ball on ground at start.
- Boom hoist wire rope: 492 feet, 5/8 inch, 6 x 31, WS, IWRC O/O, Minimum breaking strength: 41,234 lbs.
- Machine equipped with 19 ft. 8 in. crawlers, 36 in. treads, 12 parts of boom hoist reeving. 54,900 lbs. crane counterweight and two 7,350 lbs. carbody counterweights.
- Auxiliary sheave (upper point) must be removed when jib is attached.

Hoist Reeving for Jib Loads

No. of Parts of Line	1	2
Maximum Loads (lbs)	17,000	24,000

Operation of this equipment in excess of rated loads or disregard of instruction voids the warranty.



Liftcrane Jib Capacities

54,900 LB. Crane Counterweight
14,700 LB. Carbody Counterweight
Extended Position Crawlers
360 Degree Rating

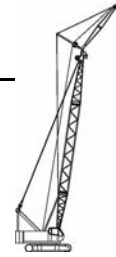
Meets
ANSI B30.5
Requirements



8000 SERIES 3

30 Ft. Jib

Load Radius (ft)	10 Degree Offset			30 Degree Offset			Load Radius (ft)
	Boom Angle (deg)	Jib Point Elev. (ft)	Rated Load (lbs)	Boom Angle (deg)	Jib Point Elev. (ft)	Rated Load (lbs)	
80 Ft. Boom							
30	79.3	113.3	24,000 *				30
32	78.0	112.8	24,000 *				32
34	77.0	112.2	24,000 *				34
36	75.9	111.6	24,000 *				36
38	74.9	111.0	24,000 *	79.6	108.2	20,230 *	38
40	73.8	110.3	24,000 *	78.5	107.5	19,730 *	40
45	71.1	108.4	24,000 *	75.7	105.6	18,600 *	45
50	68.3	106.3	24,000 *	72.8	103.4	17,610 *	50
55	65.3	103.8	23,890	69.7	100.8	16,710 *	55
60	62.3	101.0	21,340	66.7	97.9	15,960 *	60
65	59.3	97.9	19,200	63.6	94.7	15,290 *	65
70	56.2	94.3	17,410	60.3	91.0	14,700 *	70
75	52.8	90.4	15,780	56.7	86.9	14,150 *	75
80	49.3	85.9	14,460	53.1	82.2	13,710 *	80
85	45.7	80.8	13,330				85
90	41.8	75.0	12,320				90
95	37.2	68.2	11,370				95
100	32.4	60.2	10,600				100
90 Ft. Boom							
32	79.1	123.1	24,000 *				32
34	78.1	122.6	24,000 *				34
36	77.1	122.0	24,000 *				36
38	76.2	121.4	24,000 *				38
40	75.2	120.8	24,000 *	79.5	118.0	20,170 *	40
45	72.7	119.1	24,000 *	77.0	116.2	19,060 *	45
50	70.2	117.2	24,000 *	74.4	114.2	18,120 *	50
55	67.5	115.0	23,690	71.6	111.9	17,210 *	55
60	64.9	112.5	21,120	68.9	109.4	16,460 *	60
65	62.2	109.7	19,000	66.1	106.5	15,800 *	65
70	59.4	106.5	17,190	63.3	103.3	15,210 *	70
75	56.4	103.1	15,560	60.2	99.7	14,660 *	75
80	53.5	99.2	14,240	57.1	95.7	14,190 *	80
85	50.4	94.9	13,090	53.9	91.2	13,330	85
90	47.1	90.0	12,100				90
95	43.4	84.6	11,150				95
100	39.7	78.4	10,360				100
105	35.6	71.2	9,650				105



Liftcrane Jib Capacities

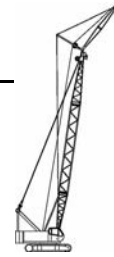
54,900 LB. Crane Counterweight
14,700 LB. Carbody Counterweight
Extended Position Crawlers
360 Degree Rating

Meets
ANSI B30.5
Requirements

8000 SERIES 3

30 Ft. Jib

Load Radius (ft)	10 Degree Offset			30 Degree Offset			Load Radius (ft)
	Boom Angle (deg)	Boom Point Elev. (ft)	Rated Load (lbs)	Boom Angle (deg)	Boom Point Elev. (ft)	Rated Load (lbs)	
100 Ft. Boom							
32	79.9	133.3	24,000 *				32
34	79.0	132.9	24,000 *				34
36	78.1	132.4	24,000 *				36
38	77.2	131.8	24,000 *				38
40	76.4	131.3	24,000 *				40
45	74.1	129.7	24,000 *				45
50	71.8	127.9	24,000 *	78.0	126.8	19,480 *	50
55	69.3	125.9	23,450	75.7	124.9	18,560 *	55
60	67.0	123.6	20,870	73.2	122.9	17,650 *	60
65	64.5	121.1	18,730	70.7	120.6	16,930 *	65
70	62.1	118.3	16,930	68.2	118.0	16,260 *	70
75	59.4	115.2	15,290	65.7	115.1	15,670 *	75
80	56.7	111.8	13,970	62.9	111.9	15,100 *	80
85	54.0	108.0	12,830	60.2	108.3	14,300	85
90	51.2	103.8	11,810	57.4	104.4	13,110	90
95	48.1	99.2	10,860	54.5	100.1	12,050	95
100	45.0	94.0	10,070	51.2	95.2	11,060	100
105	41.7	88.2	9,360				105
110	38.1	81.7	8,730				110
115	34.0	74.1	8,130				115
110 Ft. Boom							
34	79.8	143.1	24,000 *				34
36	79.0	142.7	24,000 *				36
38	78.2	142.2	24,000 *				38
40	77.3	141.6	24,000 *				40
45	75.3	140.2	24,000 *	79.0	137.2	19,860 *	45
50	73.2	138.6	24,000 *	76.8	135.6	18,930 *	50
55	70.9	136.7	23,320 *	74.5	133.7	18,070 *	55
60	68.7	134.6	20,740	72.2	131.5	17,350 *	60
65	66.5	132.3	18,580	70.0	129.2	16,680 *	65
70	64.3	129.8	16,770	67.7	126.5	16,090 *	70
75	61.8	127.0	15,140	65.1	123.7	15,520 *	75
80	59.4	123.9	13,820	62.7	120.5	14,170	80
85	57.0	120.5	12,670	60.2	117.0	12,980	85
90	54.5	116.8	11,660	57.6	113.2	11,920	90
95	51.8	112.7	10,710	54.8	108.9	10,930	95
100	49.1	108.2	9,920	52.0	104.3	10,110	100
105	46.3	103.3	9,210				105
110	43.3	97.8	8,570				110
115	39.9	91.7	7,950				115
120	36.5	84.8	7,420				120
125	32.7	76.9	6,960				125



Liftcrane Jib Capacities

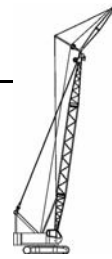
54,900 LB. Crane Counterweight
 14,700 LB. Carbody Counterweight
 Extended Position Crawlers
 360 Degree Rating

Meets
 ANSI B30.5
 Requirements

8000 SERIES 3

30 Ft. JIB

Load Radius (ft)	10 Degree Offset			30 Degree Offset			Load Radius (ft)
	Boom Angle (deg)	Jib Point Elev. (ft)	Rated Load (lbs)	Boom Angle (deg)	Jib Point Elev. (ft)	Rated Load (lbs)	
120 Ft. Boom							
36	79.7	152.9	24,000 *				36
38	79.0	152.4	24,000 *				38
40	78.2	152.0	24,000 *				40
45	76.3	150.6	24,000 *	79.7	147.6	20,190 *	45
50	74.3	149.1	24,000 *	77.7	146.1	19,290 *	50
55	72.2	147.4	23,100	75.6	144.3	18,450 *	55
60	70.2	145.5	20,520	73.5	142.4	17,720 *	60
65	68.2	143.4	18,360	71.4	140.2	17,080 *	65
70	66.1	141.0	16,550	69.3	137.8	16,490 *	70
75	63.9	138.4	14,920	67.0	135.1	15,340	75
80	61.7	135.6	13,600	64.8	132.3	13,970	80
85	59.5	132.6	12,430	62.6	129.1	12,780	85
90	57.3	129.2	11,410	60.2	125.7	11,720	90
95	54.8	125.5	10,470	57.7	121.9	10,730	95
100	52.4	121.6	9,650	55.2	117.8	9,890	100
105	49.9	117.2	8,950	52.6	113.3	9,140	105
110	47.3	112.4	8,310				110
115	44.5	107.2	7,690				115
120	41.6	101.4	7,160				120
125	38.5	95.0	6,670				125
130	35.3	87.8	6,230				130
135	31.7	79.5	5,840				135



Liftcrane Jib Capacities

54,900 LB. Crane Counterweight
 14,700 LB. Carbody Counterweight
 Extended Position Crawlers
 360 Degree Rating

Meets
 ANSI B30.5
 Requirements

8000 SERIES 3

30 Ft. JIB

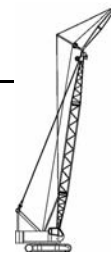
Load Radius (ft)	10 Degree Offset			30 Degree Offset			Load Radius (ft)
	Boom Angle (deg)	Boom Point Elev. (ft)	Rated Load (lbs)	Boom Angle (deg)	Boom Point Elev. (ft)	Rated Load (lbs)	
130 Ft. Boom							
38	79.7	162.7	24,000 *				38
40	79.0	162.2	24,000 *				40
45	77.1	161.0	24,000 *				45
50	75.3	159.6	24,000 *	78.5	156.5	19,620 *	50
55	73.4	158.0	22,880	76.5	154.9	18,780 *	55
60	71.5	156.2	20,300	74.6	153.1	18,070 *	60
65	69.6	154.2	18,140	72.7	151.1	17,430 *	65
70	67.7	152.1	16,330	70.7	148.8	16,860	70
75	65.6	149.7	14,680	68.6	146.4	15,140	75
80	63.6	147.1	13,350	66.6	143.8	13,770	80
85	61.6	144.3	12,210	64.5	140.9	12,580	85
90	59.6	141.2	11,170	62.4	137.7	11,530	90
95	57.3	137.9	10,220	60.1	134.3	10,510	95
100	55.2	134.3	9,430	57.9	130.6	9,700	100
105	52.9	130.4	8,700	55.6	126.6	8,950	105
110	50.6	126.2	8,060	53.2	122.2	8,260	110
115	48.1	121.5	7,450				115
120	45.6	116.5	6,920				120
125	43.0	111.0	6,430				125
130	40.2	105.0	5,990				130
135	37.3	98.2	5,570				135
140	33.9	90.7	5,200				140
145							145
150							150



Liftcrane Jib Capacities

54,900 LB. Crane Counterweight
14,700 LB. Carbody Counterweight
Extended Position Crawlers
360 Degree Rating

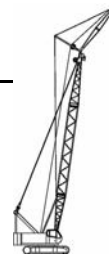
Meets
ANSI B30.5
 Requirements



8000 SERIES 3

30 Ft. JIB

Load Radius (ft)	10 Degree Offset			30 Degree Offset			Load Radius (ft)
	Boom Angle (deg)	Jib Point Elev. (ft)	Rated Load (lbs)	Boom Angle (deg)	Jib Point Elev. (ft)	Rated Load (lbs)	
140 Ft. Boom							
40	79.6	172.5	24,000 *				40
45	77.9	171.3	24,000 *				45
50	76.2	170.0	24,000 *	79.2	166.9	19,900 *	50
55	74.4	168.5	22,680	77.4	165.4	19,090 *	55
60	72.6	166.8	20,080	75.6	163.7	18,400 *	60
65	70.9	165.0	17,940	73.8	161.8	17,760 *	65
70	69.1	163.0	16,110	72.0	159.7	16,680	70
75	67.2	160.8	14,460	70.0	157.5	14,960	75
80	65.3	158.4	13,130	68.1	155.0	13,600	80
85	63.5	155.8	11,970	66.2	152.4	12,380	85
90	61.6	152.9	10,950	64.3	149.5	11,330	90
95	59.5	149.9	9,980	62.2	146.4	10,310	95
100	57.5	146.6	9,190	60.1	143.0	9,500	100
105	55.5	143.0	8,460	58.1	139.3	8,750	105
110	53.4	139.2	7,820	55.9	135.4	8,060	110
115	51.1	135.1	7,180	53.5	131.1	7,400	115
120	48.9	130.6	6,650	51.3	126.5	6,850	120
125	46.6	125.7	6,170				125
130	44.2	120.4	5,730				130
135	41.7	114.7	5,330				135
140	38.8	108.3	4,910				140
145	36.0	101.3	4,560				145
150	32.9	93.5	4,210				150



Liftcrane Jib Capacities

54,900 LB. Crane Counterweight
 14,700 LB. Carbody Counterweight
 Extended Position Crawlers
 360 Degree Rating

Meets
 ANSI B30.5
 Requirements

8000 SERIES 3

30 Ft. JIB

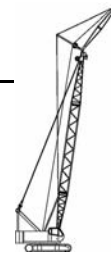
Load Radius (ft)	10 Degree Offset			30 Degree Offset			Load Radius (ft)
	Boom Angle (deg)	Boom Point Elev. (ft)	Rated Load (lbs)	Boom Angle (deg)	Boom Point Elev. (ft)	Rated Load (lbs)	
150 Ft. Boom							
45	78.6	181.6	24,000 *				45
50	77.0	180.4	24,000 *	79.9	177.2	20,170 *	50
55	75.3	178.9	22,530	78.1	175.8	19,370 *	55
60	73.6	177.4	19,920	76.4	174.2	18,690 *	60
65	72.0	175.7	17,790	74.8	172.5	18,070 *	65
70	70.3	173.8	15,960	73.1	170.5	16,550	70
75	68.5	171.7	14,300	71.2	168.4	14,830	75
80	66.8	169.5	12,980	69.5	166.1	13,470	80
85	65.1	167.0	11,810	67.7	163.7	12,250	85
90	63.3	164.4	10,800	65.9	161.0	11,190	90
95	61.4	161.6	9,830	63.9	158.1	10,180	95
100	59.6	158.5	9,010	62.1	155.0	9,340	100
105	57.7	155.3	8,310	60.2	151.6	8,590	105
110	55.8	151.8	7,640	58.2	148.0	7,910	110
115	53.7	148.0	7,030	56.1	144.1	7,270	115
120	51.7	143.9	6,500	54.0	140.0	6,700	120
125	49.6	139.6	5,990	51.8	135.5	6,190	125
130	47.5	134.8	5,550				130
135	45.3	129.7	5,150				135
140	42.8	124.2	4,730				140
145	40.3	118.2	4,320				145
150	37.8	111.6	3,940				150
155	35.0	104.3	3,590				155
160	31.8	96.2	3,260				160



Liftcrane Jib Capacities

54,900 LB. Crane Counterweight
14,700 LB. Carbody Counterweight
Extended Position Crawlers
360 Degree Rating

Meets
ANSI B30.5
 Requirements



8000 SERIES 3

30 Ft. JIB

Load Radius (ft)	10 Degree Offset			30 Degree Offset			Load Radius (ft)
	Boom Angle (deg)	Jib Point Elev. (ft)	Rated Load (lbs)	Boom Angle (deg)	Jib Point Elev. (ft)	Rated Load (lbs)	
160 Ft. Boom							
45	79.2	191.9	24,000				45
50	77.7	190.7	24,000				50
55	76.1	189.4	22,350	78.8	186.2	19,640 *	55
60	74.5	187.9	19,750	77.2	184.7	18,950 *	60
65	73.0	186.3	17,590	75.6	183.0	18,290	65
70	71.4	184.5	15,760	74.0	181.2	16,400	70
75	69.7	182.5	14,100	72.3	179.3	14,680	75
80	68.1	180.4	12,780	70.7	177.1	13,290	80
85	66.5	178.2	11,610	69.0	174.8	12,080	85
90	64.8	175.7	10,580 *	67.3	172.3	11,020	90
95	63.0	173.1	9,630 *	65.5	169.6	10,000	95
100	61.3	170.2	8,810	63.8	166.7	9,170	100
105	59.6	167.2	8,090	62.0	163.6	8,420	105
110	57.9	164.0	7,450	60.2	160.3	7,730	110
115	55.9	160.5	6,810	58.2	156.7	7,070	115
120	54.1	156.8	6,280	56.3	152.9	6,520	120
125	52.2	152.8	5,770	54.4	148.8	5,990	125
130	50.3	148.5	5,330	52.4	144.4	5,530	130
135	48.2	143.9	4,890				135
140	46.0	139.0	4,400				140
145	43.9	133.7	4,010				145
150	41.6	127.9	3,610				150
155	39.3	121.6	3,260				155
160	36.6	114.8	2,910				160
165	33.9	107.3	2,600				165



Liftcrane Jib Capacities

54,900 LB. Crane Counterweight
 14,700 LB. Carbody Counterweight
 Extended Position Crawlers
 360 Degree Rating

Meets
 ANSI B30.5
 Requirements



8000 SERIES 3

30 Ft. JIB

Load Radius (ft)	10 Degree Offset			30 Degree Offset			Load Radius (ft)
	Boom Angle (deg)	Boom Point Elev. (ft)	Rated Load (lbs)	Boom Angle (deg)	Boom Point Elev. (ft)	Rated Load (lbs)	
170 Ft. Boom							
45	76.8	199.7	23,360 *				45
50	75.3	198.3	22,830 *				50
55	73.8	196.8	22,150	79.4	196.5	19,860 *	55
60	72.4	195.1	19,550	77.9	195.1	19,220 *	60
65	70.8	193.3	17,370	76.4	193.6	18,120	65
70	69.3	191.3	15,560	74.9	191.9	16,220	70
75	67.7	189.2	13,880	73.2	190.0	14,500	75
80	66.2	186.9	12,560	71.7	188.0	13,090	80
85	64.5	184.4	11,390	70.1	185.8	11,880	85
90	62.9	181.7	10,360	68.6	183.5	10,820	90
95	61.3	178.9	9,390	66.9	180.9	9,810	95
100	59.7	175.9	8,590	65.2	178.2	8,970	100
105	57.9	172.6	7,870	63.6	175.3	8,220	105
110	56.2	169.2	7,200	61.9	172.3	7,530	110
115	54.4	165.5	6,560	60.1	169.0	6,870	115
120	52.6	161.6	6,040	58.3	165.4	6,300	120
125	50.8	157.4	5,550	56.5	161.7	5,790	125
130	48.8	152.9	5,070	54.7	157.6	5,310	130
135	46.9	148.1	4,560	52.8	153.3	4,850	135
140	44.8	143.0	4,070				140
145	42.7	137.4	3,650				145
150	40.4	131.5	3,280				150
155			2,930				155
160			2,570				160



Liftcrane Jib Capacities

54,900 LB. Crane Counterweight
14,700 LB. Carbody Counterweight
Extended Position Crawlers
360 Degree Rating

Meets
ANSI B30.5
 Requirements

8000 SERIES 3

30 Ft. JIB

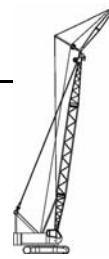
Load Radius (ft)	10 Degree Offset			30 Degree Offset			Load Radius (ft)
	Boom Angle (deg)	Jib Point Elev. (ft)	Rated Load (lbs)	Boom Angle (deg)	Jib Point Elev. (ft)	Rated Load (lbs)	
180 Ft. Boom							
50	78.9	211.2	19,770 *				50
55	77.4	210.0	19,240 *	79.9	206.9	19,060 *	55
60	76.0	208.7	18,760 *	78.5	205.5	18,580 *	60
65	74.6	207.3	17,190	77.1	204.0	17,960	65
70	73.2	205.7	15,360	75.6	202.4	16,070	70
75	71.7	203.9	13,710	74.1	200.7	14,350	75
80	70.3	202.1	12,360	72.6	198.7	12,940	80
85	68.8	200.0	11,190	71.2	196.7	11,720	85
90	67.4	197.9	10,180	69.7	194.5	10,640	90
95	65.8	195.5	9,190	68.1	192.1	9,630	95
100	64.3	193.1	8,390	66.5	189.6	8,790	100
105	62.8	190.4	7,670	65.0	186.9	8,040	105
110	61.3	187.6	7,010	63.4	184.0	7,360	110
115	59.6	184.5	6,370	61.7	180.9	6,670	115
120	58.0	181.3	5,840	60.1	177.6	6,120	120
125	56.4	177.9	5,310	58.4	174.1	5,590	125
130	54.7	174.3	4,780	56.7	170.4	5,110	130
135	53.0	170.4	4,270	55.0	166.4	4,580	135
140	51.2	166.3	3,790	53.1	162.2	4,070	140
145	49.4	161.9	3,370	51.3	157.7	3,610	145
150	47.6	157.2	2,970				150
155	45.7	152.2	2,600				155



Liftcrane Jib Capacities

54,900 LB. Crane Counterweight
14,700 LB. Carbody Counterweight
Extended Position Crawlers
360 Degree Rating

Meets
ANSI B30.5
Requirements



8000 SERIES 3

40 Ft. JIB

Load Radius (ft)	10 Degree Offset			30 Degree Offset			Load Radius (ft)
	Boom Angle (deg)	Boom Point Elev. (ft)	Rated Load (lbs)	Boom Angle (deg)	Boom Point Elev. (ft)	Rated Load (lbs)	
80 Ft. Boom							
34	79.3	122.5	24,000 *				34
36	78.3	122.0	24,000 *				36
38	77.4	121.4	24,000 *				38
40	76.4	120.8	24,000 *				40
45	73.9	119.1	24,000 *	79.7	115.6	15,360 *	45
50	71.4	117.1	22,150 *	77.1	113.6	14,480 *	50
55	68.7	114.9	20,280 *	74.3	111.3	13,640 *	55
60	66.1	112.4	18,800 *	71.6	108.7	12,980 *	60
65	63.4	109.6	17,520 *	68.8	105.8	12,360 *	65
70	60.6	106.5	16,400 *	65.9	102.6	11,830 *	70
75	57.6	103.0	15,360 *	62.7	98.9	11,350 *	75
80	54.6	99.1	14,520 *	59.6	94.9	10,930 *	80
85	51.5	94.8	13,470	56.3	90.4	10,560 *	85
90	48.3	90.0	12,450	52.9	85.2	10,250 *	90
95	44.6	84.5	11,500				95
100	40.8	78.3	10,710				100
105	36.7	71.1	10,000				105
90 Ft. Boom							
36	79.3	132.3	24,000 *				36
38	78.4	131.8	24,000 *				38
40	77.5	131.2	24,000 *				40
45	75.2	129.6	24,000 *				45
50	72.9	127.9	23,320 *	78.2	124.3	14,810 *	50
55	70.4	125.8	21,400 *	75.6	122.2	14,020 *	55
60	68.1	123.6	19,880 *	73.2	119.8	13,330 *	60
65	65.6	121.0	18,560 *	70.7	117.2	12,760 *	65
70	63.2	118.2	17,370	68.1	114.3	12,230 *	70
75	60.4	115.1	15,740	65.3	111.1	11,720 *	75
80	57.8	111.7	14,410	62.5	107.5	11,300 *	80
85	55.1	107.9	13,240	59.7	103.6	10,930 *	85
90	52.3	103.7	12,230	56.7	99.2	10,580 *	90
95	49.1	99.1	11,280	53.4	94.3	10,270 *	95
100	46.0	93.9	10,490				100
105	42.7	88.1	9,760				105
110	39.1	81.5	9,120				110
115	35.0	74.0	8,500				115



Liftcrane Jib Capacities

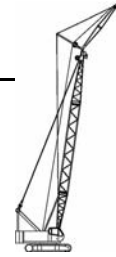
54,900 LB. Crane Counterweight
14,700 LB. Carbody Counterweight
Extended Position Crawlers
360 Degree Rating

Meets
ANSI B30.5
Requirements

8000 SERIES 3

40 Ft. JIB

Load Radius (ft)	10 Degree Offset			30 Degree Offset			Load Radius (ft)
	Boom Angle (deg)	Jib Point Elev. (ft)	Rated Load (lbs)	Boom Angle (deg)	Jib Point Elev. (ft)	Rated Load (lbs)	
100 Ft. Boom							
36	80.0	142.6	24,000 *				36
38	79.2	142.1	24,000 *				38
40	78.4	141.6	24,000 *				40
45	76.3	140.1	24,000 *				45
50	74.2	138.5	24,000 *	79.1	134.8	15,100 *	50
55	71.9	136.6	22,480 *	76.7	132.9	14,320 *	55
60	69.7	134.6	20,920 *	74.5	130.8	13,660 *	60
65	67.5	132.2	18,950	72.2	128.4	13,090 *	65
70	65.3	129.7	17,150	69.9	125.8	12,560 *	70
75	62.8	126.9	15,490	67.3	122.9	12,050 *	75
80	60.4	123.8	14,150	64.9	119.7	11,640 *	80
85	58.0	120.4	13,000	62.4	116.1	11,260 *	85
90	55.5	116.7	11,970	59.8	112.3	10,910 *	90
95	52.8	112.6	11,020	56.9	108.0	10,580 *	95
100	50.1	108.1	10,200	54.0	103.3	10,310 *	100
105	47.2	103.2	9,500				105
110	44.3	97.7	8,860				110
115	40.9	91.6	8,220				115
120	37.4	84.6	7,690				120
125	33.7	76.7	7,230				125
110 Ft. Boom							
38	79.9	152.4	24,000 *				38
40	79.2	151.9	24,000 *				40
45	77.2	150.5	24,000 *				45
50	75.3	149.0	24,000 *	79.9	145.3	15,360 *	50
55	73.2	147.3	23,500 *	77.7	143.5	14,610 *	55
60	71.2	145.4	20,960	75.6	141.6	13,970 *	60
65	69.1	143.3	18,800	73.5	139.4	13,400 *	65
70	67.1	140.9	16,970	71.4	137.0	12,870 *	70
75	64.8	138.3	15,340	69.1	134.3	12,380 *	75
80	62.7	135.5	13,990	66.9	131.4	11,940 *	80
85	60.5	132.5	12,830	64.6	128.2	11,570 *	85
90	58.2	129.1	11,810	62.2	124.7	11,220 *	90
95	55.7	125.4	10,840	59.7	121.0	10,890 *	95
100	53.3	121.5	10,050	57.1	116.8	10,470	100
105	50.8	117.1	9,320	54.5	112.3	9,700	105
110	48.2	112.3	8,680	51.8	107.3	9,010	110
110	45.4	107.1	8,040				110
115	42.5	101.3	7,510				115
120	39.4	94.9	7,050				120
125	36.1	87.6	6,610				125
130	32.5	79.3	6,190				130



Liftcrane Jib Capacities

54,900 LB. Crane Counterweight
14,700 LB. Carbody Counterweight
Extended Position Crawlers
360 Degree Rating

Meets
ANSI B30.5
Requirements

8000 SERIES 3

40 Ft. JIB

Load Radius (ft)	10 Degree Offset			30 Degree Offset			Load Radius (ft)
	Boom Angle (deg)	Boom Point Elev. (ft)	Rated Load (lbs)	Boom Angle (deg)	Boom Point Elev. (ft)	Rated Load (lbs)	
120 Ft. Boom							
40	79.9	162.2	24,000 *				40
45	78.1	160.9	24,000 *				45
50	76.2	159.5	24,000 *				50
55	74.3	157.9	23,360	78.5	154.1	14,880 *	55
60	72.4	156.1	20,760	76.6	152.2	14,240 *	60
65	70.5	154.1	18,580	74.7	150.2	13,690 *	65
70	68.6	152.0	16,770	72.7	148.0	13,160 *	70
75	66.5	149.6	15,100	70.6	145.5	12,670 *	75
80	64.5	147.0	13,770	68.5	142.9	12,250 *	80
85	62.5	144.2	12,610	66.4	140.0	11,860 *	85
90	60.5	141.1	11,570	64.3	136.8	11,500 *	90
95	58.2	137.8	10,620	62.0	133.4	11,130	95
100	56.0	134.2	9,810	59.7	129.6	10,290	100
105	53.8	130.3	9,080	57.4	125.6	9,520	105
110	51.5	126.0	8,440	55.0	121.2	8,840	110
115	49.0	121.4	7,800	52.3	116.3	8,150	115
120	46.5	116.4	7,270				120
125	43.8	110.9	6,790				125
130	41.1	104.8	6,320				130
135	38.1	98.1	5,930				135
140	34.7	90.5	5,530				140
130 Ft. Boom							
45	78.8	171.2	24,000 *				45
50	77.1	169.9	24,000 *				50
55	75.2	168.4	23,170	79.3	164.5	15,100 *	55
60	73.5	166.7	20,540	77.5	162.8	14,500 *	60
65	71.7	164.9	18,380	75.7	160.9	13,930 *	65
70	69.9	162.9	16,550	73.8	158.9	13,420 *	70
75	68.0	160.7	14,880	71.8	156.6	12,940 *	75
80	66.2	158.3	13,550	69.9	154.1	12,520 *	80
85	64.3	155.7	12,380	68.0	151.4	12,140 *	85
90	62.4	152.8	11,350	66.1	148.5	11,770 *	90
95	60.3	149.8	10,380	63.9	145.4	10,950	95
100	58.3	146.5	9,560	61.9	142.0	10,090	100
105	56.3	142.9	8,860	59.8	138.3	9,340	105
110	54.2	139.1	8,200	57.6	134.3	8,640	110
115	51.9	134.9	7,560	55.2	130.0	7,980	115
120	49.7	130.4	7,030	52.9	125.4	7,400	120
125	47.4	125.6	6,540				125
130	45.0	120.3	6,080				130
135	42.5	114.5	5,680				135
140	39.6	108.2	5,260				140
145	36.8	101.2	4,930				145
150	33.7	93.3	4,600				150



Liftcrane Jib Capacities

54,900 LB. Crane Counterweight
 14,700 LB. Carbody Counterweight
 Extended Position Crawlers
 360 Degree Rating

Meets
 ANSI B30.5
 Requirements



8000 SERIES 3

40 Ft. JIB

Load Radius (ft)	10 Degree Offset			30 Degree Offset			Load Radius (ft)
	Boom Angle (deg)	Jib Point Elev. (ft)	Rated Load (lbs)	Boom Angle (deg)	Jib Point Elev. (ft)	Rated Load (lbs)	
140 Ft. Boom							
45	79.4	181.5	24,000 *				45
50	77.8	180.3	24,000 *				50
55	76.1	178.9	22,970	79.9	174.9	15,320 *	55
60	74.4	177.3	20,340	78.2	173.3	14,720 *	60
65	72.8	175.6	18,180	76.5	171.6	14,170 *	65
70	71.1	173.7	16,330	74.8	169.6	13,690 *	70
75	69.3	171.6	14,680	72.9	167.5	13,180 *	75
80	67.6	169.4	13,330	71.2	165.2	12,760 *	80
85	65.9	166.9	12,160	69.4	162.7	12,380 *	85
90	64.1	164.3	11,130	67.6	160.0	11,810	90
95	62.2	161.5	10,160	65.6	157.1	10,780	95
100	60.3	158.4	9,340	63.7	154.0	9,920	100
105	58.5	155.2	8,610	61.8	150.6	9,140	105
110	56.6	151.6	7,950	59.8	147.0	8,460	110
115	54.5	147.9	7,340	57.6	143.1	7,780	115
120	52.5	143.8	6,790	55.5	138.9	7,200	120
125	50.4	139.4	6,300	53.4	134.3	6,670	125
130	48.2	134.7	5,840				130
135	46.0	129.6	5,420				135
140	43.5	124.1	5,020				140
145	41.1	118.1	4,670				145
150	38.5	111.5	4,320				150
155	35.7	104.2	3,940				155
160	32.5	96.0	3,610				160



Liftcrane Jib Capacities

54,900 LB. Crane Counterweight
 14,700 LB. Carbody Counterweight
 Extended Position Crawlers
 360 Degree Rating

Meets
 ANSI B30.5
 Requirements



8000 SERIES 3

40 Ft. JIB

Load Radius (ft)	10 Degree Offset			30 Degree Offset			Load Radius (ft)
	Boom Angle (deg)	Boom Point Elev. (ft)	Rated Load (lbs)	Boom Angle (deg)	Boom Point Elev. (ft)	Rated Load (lbs)	
150 Ft. Boom							
45	80.0	191.8	24,000 *				45
50	78.5	190.6	24,000 *				50
55	76.8	189.3	22,810				55
60	75.3	187.8	20,190	78.9	183.8	14,920 *	60
65	73.7	186.2	18,030	77.3	182.1	14,390 *	65
70	72.1	184.4	16,180	75.7	180.3	13,910 *	70
75	70.5	182.4	14,520	73.9	178.3	13,420 *	75
80	68.8	180.3	13,180	72.3	176.2	13,000 *	80
85	67.2	178.1	12,010	70.6	173.8	12,630 *	85
90	65.6	175.6	10,970	68.9	171.3	11,680	90
95	63.8	173.0	10,000	67.1	168.6	10,670	95
100	62.1	170.1	9,190	65.3	165.7	9,810	100
105	60.4	167.1	8,460	63.5	162.6	9,030	105
110	58.6	163.8	7,800	61.7	159.2	8,330	110
115	56.7	160.4	7,160	59.7	155.7	7,670	115
120	54.8	156.6	6,610	57.8	151.8	7,090	120
125	52.9	152.6	6,120	55.8	147.7	6,560	125
130	51.0	148.4	5,660	53.8	143.2	6,080	130
135	49.0	143.8	5,260				135
140	46.7	138.8	4,850				140
145	44.6	133.5	4,450				145
150	42.3	127.8	4,050				150
155	39.9	121.5	3,700				155
160	37.3	114.6	3,350				160
165	34.6	107.1	3,040				165



Liftcrane Jib Capacities

54,900 LB. Crane Counterweight
14,700 LB. Carbody Counterweight
Extended Position Crawlers
360 Degree Rating

Meets
ANSI B30.5
 Requirements



8000 SERIES 3

40 Ft. JIB

Load Radius (ft)	10 Degree Offset			30 Degree Offset			Load Radius (ft)
	Boom Angle (deg)	Jib Point Elev. (ft)	Rated Load (lbs)	Boom Angle (deg)	Jib Point Elev. (ft)	Rated Load (lbs)	
160 Ft. Boom							
50	79.0	200.9	22,830 *				50
55	77.5	199.6	22,000 *				55
60	76.0	198.2	20,030	79.5	194.2	15,120 *	60
65	74.6	196.7	17,850	78.0	192.6	14,590 *	65
70	73.1	195.0	16,000	76.4	190.9	14,100 *	70
75	71.5	193.2	14,320	74.8	189.0	13,640 *	75
80	70.0	191.2	12,980	73.2	187.0	13,220	80
85	68.4	189.0	11,810	71.7	184.8	12,630	85
90	66.9	186.7	10,780	70.1	182.5	11,530	90
95	65.2	184.3	9,780	68.4	179.9	10,510	95
100	63.6	181.6	8,970	66.7	177.2	9,650	100
105	62.0	178.8	8,240	65.1	174.3	8,880	105
110	60.4	175.8	7,580	63.4	171.2	8,170	110
115	58.6	172.5	6,940	61.5	167.9	7,490	115
120	56.9	169.1	6,410	59.8	164.3	6,920	120
125	55.1	165.4	5,900	58.0	160.5	6,390	125
130	53.3	161.5	5,440	56.1	156.5	5,900	130
135	51.5	157.3	5,020	54.2	152.1	5,440	135
140	49.5	152.8	4,560	52.1	147.5	5,000	140
145	47.5	148.0	4,140				145
150	45.5	142.8	3,740				150
155	43.4	137.3	3,370				155
160	41.1	131.3	3,020				160
165	38.8	124.8	2,710				165



Liftcrane Jib Capacities

54,900 LB. Crane Counterweight
 14,700 LB. Carbody Counterweight
 Extended Position Crawlers
 360 Degree Rating

Meets
 ANSI B30.5
 Requirements



8000 SERIES 3

40 Ft. JIB

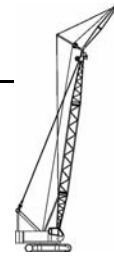
Load Radius (ft)	10 Degree Offset			30 Degree Offset			Load Radius (ft)
	Boom Angle (deg)	Boom Point Elev. (ft)	Rated Load (lbs)	Boom Angle (deg)	Boom Point Elev. (ft)	Rated Load (lbs)	
170 Ft. Boom							
50	79.6	211.1	20,800 *				50
55	78.1	209.9	20,000 *				55
60	76.7	208.6	19,200 *	80.0	204.6	15,290 *	60
65	75.3	207.1	17,630	78.6	203.1	14,770 *	65
70	73.9	205.6	15,800	77.1	201.4	14,300 *	70
75	72.4	203.8	14,130	75.6	199.7	13,840 *	75
80	71.0	202.0	12,760	74.1	197.8	13,420 *	80
85	69.5	199.9	11,590	72.6	195.7	12,450	85
90	68.1	197.8	10,560	71.1	193.5	11,370	90
95	66.5	195.4	9,560	69.5	191.1	10,330	95
100	65.0	192.9	8,750	68.0	188.5	9,470	100
105	63.5	190.3	8,020	66.4	185.8	8,680	105
110	61.9	187.4	7,360	64.8	182.9	8,000	110
115	60.3	184.4	6,720	63.1	179.8	7,310	115
120	58.7	181.2	6,170	61.5	176.5	6,720	120
125	57.0	177.8	5,680	59.8	173.0	6,190	125
130	55.4	174.1	5,220	58.1	169.2	5,700	130
135	53.7	170.3	4,730	56.4	165.3	5,260	135
140	51.8	166.2	4,230	54.4	161.0	4,820	140
145	50.1	161.8	3,810	52.6	156.5	4,360	145
150	48.2	157.1	3,410				150
155	46.3	152.1	3,060				155
160	44.2	146.7	2,680				160



Liftcrane Jib Capacities

54,900 LB. Crane Counterweight
14,700 LB. Carbody Counterweight
Extended Position Crawlers
360 Degree Rating

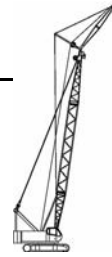
Meets
ANSI B30.5
 Requirements



8000 SERIES 3

40 Ft. JIB

Load Radius (ft)	10 Degree Offset			30 Degree Offset			Load Radius (ft)
	Boom Angle (deg)	Jib Point Elev. (ft)	Rated Load (lbs)	Boom Angle (deg)	Jib Point Elev. (ft)	Rated Load (lbs)	
180 Ft. Boom							
55	78.7	220.2	18,500 *				55
60	77.3	219.0	17,800 *				60
65	76.0	217.6	17,100 *	79.1	213.5	14,740 *	65
70	74.7	216.1	15,630	77.7	211.9	14,460 *	70
75	73.2	214.4	13,950	76.3	210.3	14,020 *	75
80	71.9	212.6	12,580	74.9	208.4	13,580	80
85	70.5	210.7	11,410	73.5	206.5	12,320	85
90	69.1	208.7	10,360	72.1	204.4	11,220	90
95	67.6	206.5	9,390	70.5	202.1	10,180	95
100	66.2	204.1	8,570	69.1	199.7	9,320	100
105	64.8	201.6	7,820	67.6	197.2	8,550	105
110	63.3	198.9	7,160	66.1	194.4	7,840	110
115	61.8	196.1	6,520	64.5	191.5	7,160	115
120	60.3	193.1	5,970	63.0	188.4	6,560	120
125	58.8	189.9	5,460	61.4	185.1	6,040	125
130	57.2	186.5	4,960	59.8	181.7	5,550	130
135	55.6	182.9	4,450	58.2	178.0	5,090	135
140	53.9	179.1	3,940	56.4	174.0	4,580	140
145	52.3	175.0	3,520	54.7	169.8	4,120	145
150	50.6	170.7	3,130	53.0	165.4	3,680	150
155	48.8	166.1	2,750				155



Liftcrane Jib Capacities

54,900 LB. Crane Counterweight
14,700 LB. Carbody Counterweight
Extended Position Crawlers
360 Degree Rating

Meets
ANSI B30.5
Requirements

8000 SERIES 3

50 Ft. JIB

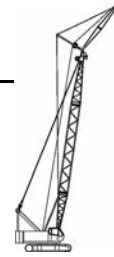
Load Radius (ft)	10 Degree Offset			30 Degree Offset			Load Radius (ft)
	Boom Angle (deg)	Boom Point Elev. (ft)	Rated Load (lbs)	Boom Angle (deg)	Boom Point Elev. (ft)	Rated Load (lbs)	
80 Ft. Boom							
38	79.3	131.7	20,000 *				38
40	78.4	131.1	20,000 *				40
45	76.1	129.6	20,000 *				45
50	73.8	127.8	18,540 *				50
55	71.3	125.8	16,950 *	78.0	121.7	11,080 *	55
60	68.9	123.5	15,690 *	75.5	119.4	10,490 *	60
65	66.5	121.0	14,610 *	73.0	116.7	9,980 *	65
70	64.0	118.2	13,660 *	70.4	113.8	9,540 *	70
75	61.3	115.1	12,760 *	67.6	110.6	9,100 *	75
80	58.7	111.6	12,030 *	64.8	107.0	8,730 *	80
85	56.0	107.9	11,390 *	62.0	103.0	8,420 *	85
90	53.2	103.7	10,800 *	59.0	98.6	8,130 *	90
95	50.0	99.0	10,250 *	55.6	93.7	7,840 *	95
100	46.9	93.8	9,780 *	52.3	88.2	7,620 *	100
105	43.6	88.0	9,360 *				105
110	40.0	81.5	8,990 *				110
115	35.8	73.9	8,640 *				115
90 Ft. Boom							
38	80.0	142.0	20,000 *				38
40	79.2	141.5	20,030 *				40
45	77.1	140.1	20,030 *				45
50	75.0	138.4	19,400 *				50
55	72.7	136.6	17,790 *	78.9	132.4	11,300 *	55
60	70.5	134.5	16,510 *	76.7	130.2	10,730 *	60
65	68.3	132.2	15,380 *	74.4	127.8	10,250 *	65
70	66.1	129.6	14,390 *	72.0	125.2	9,780 *	70
75	63.6	126.8	13,490 *	69.5	122.3	9,360 *	75
80	61.3	123.7	12,720 *	67.0	119.1	8,990 *	80
85	58.8	120.3	12,050 *	64.5	115.5	8,680 *	85
90	56.3	116.6	11,440 *	61.8	111.6	8,370 *	90
95	53.6	112.5	10,860 *	58.9	107.3	8,110 *	95
100	50.9	108.0	10,380 *	56.1	102.6	7,870 *	100
105	48.0	103.1	9,850	53.1	97.4	7,640 *	105
110	45.0	97.6	9,210				110
115	41.7	91.5	8,570				115
120	38.2	84.5	8,040				120
125	34.4	76.6	7,560				125



Liftcrane Jib Capacities

54,900 LB. Crane Counterweight
14,700 LB. Carbody Counterweight
Extended Position Crawlers
360 Degree Rating

Meets
ANSI B30.5
Requirements



8000 SERIES 3

50 Ft. JIB

Load Radius (ft)	10 Degree Offset			30 Degree Offset			Load Radius (ft)
	Boom Angle (deg)	Jib Point Elev. (ft)	Rated Load (lbs)	Boom Angle (deg)	Jib Point Elev. (ft)	Rated Load (lbs)	
100 Ft. Boom							
40	79.9	151.8	20,000 *				40
45	78.0	150.5	20,000 *				45
50	76.0	149.0	20,000 *				50
55	73.9	147.2	18,580 *	79.7	142.9	11,500 *	55
60	71.9	145.3	17,260 *	77.7	141.0	10,950 *	60
65	69.9	143.2	16,110 *	75.5	138.8	10,470 *	65
70	67.8	140.9	15,120 *	73.4	136.3	10,030 *	70
75	65.6	138.3	14,170 *	71.1	133.7	9,610 *	75
80	63.4	135.5	13,380 *	68.8	130.7	9,230 *	80
85	61.2	132.4	12,690 *	66.5	127.6	8,920 *	85
90	59.0	129.0	12,050 *	64.2	124.1	8,610 *	90
95	56.5	125.4	11,130	61.6	120.2	8,330 *	95
100	54.1	121.4	10,310	59.1	116.1	8,090 *	100
105	51.6	117.0	9,590	56.4	111.5	7,870 *	105
110	49.0	112.2	8,950	53.7	106.5	7,690 *	110
115	46.1	107.0	8,310				115
120	43.2	101.2	7,780				120
125	40.2	94.8	7,290				125
130	36.8	87.5	6,830				130
135	33.2	79.2	6,430				135
110 Ft. Boom							
45	78.8	160.8	20,000 *				45
50	76.9	159.4	20,000 *				50
55	75.0	157.8	19,330 *				55
60	73.1	156.0	17,980 *	78.5	151.6	11,150 *	60
65	71.2	154.1	16,820 *	76.5	149.5	10,670 *	65
70	69.3	151.9	15,800 *	74.6	147.3	10,250 *	70
75	67.2	149.5	14,830 *	72.4	144.9	9,830 *	75
80	65.2	146.9	14,020 *	70.4	142.2	9,470 *	80
85	63.2	144.1	12,960	68.3	139.3	9,140 *	85
90	61.2	141.0	11,920	66.1	136.1	8,840 *	90
95	58.9	137.7	10,950	63.8	132.6	8,550 *	95
100	56.7	134.1	10,160	61.5	128.9	8,310 *	100
105	54.5	130.2	9,430	59.2	124.8	8,090 *	105
110	52.2	125.9	8,770	56.7	120.3	7,890 *	110
115	49.7	121.3	8,130	54.0	115.5	7,690 *	115
120	47.2	116.3	7,600				120
125	44.5	110.8	7,120				125
130	41.8	104.7	6,650				130
135	38.8	98.0	6,260				135
140	35.4	90.4	5,860				140



Liftcrane Jib Capacities

54,900 LB. Crane Counterweight
 14,700 LB. Carbody Counterweight
 Extended Position Crawlers
 360 Degree Rating

Meets
 ANSI B30.5
 Requirements

8000 SERIES 3

50 Ft. JIB

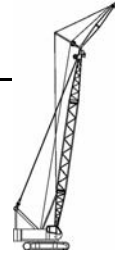
Load Radius (ft)	10 Degree Offset			30 Degree Offset			Load Radius (ft)
	Boom Angle (deg)	Boom Point Elev. (ft)	Rated Load (lbs)	Boom Angle (deg)	Boom Point Elev. (ft)	Rated Load (lbs)	
120 Ft. Boom							
45	79.5	171.2	20,000 *				45
50	77.7	169.8	20,000 *				50
55	75.9	168.3	20,000 *				55
60	74.2	166.7	18,690 *	79.2	162.1	11,330 *	60
65	72.4	164.8	17,500 *	77.4	160.2	10,860 *	65
70	70.6	162.8	16,440 *	75.6	158.2	10,420 *	70
75	68.7	160.6	15,250	73.6	155.9	10,030 *	75
80	66.8	158.2	13,910	71.7	153.4	9,670 *	80
85	65.0	155.6	12,740	69.7	150.7	9,340 *	85
90	63.1	152.7	11,700	67.8	147.8	9,060 *	90
95	61.0	149.7	10,730	65.6	144.6	8,770 *	95
100	59.0	146.4	9,920	63.6	141.2	8,500 *	100
105	57.0	142.8	9,190	61.4	137.5	8,280 *	105
110	54.9	139.0	8,530	59.3	133.5	8,060 *	110
115	52.6	134.8	7,890	56.8	129.1	7,870 *	115
120	50.4	130.3	7,360	54.5	124.4	7,690 *	120
125	48.1	125.5	6,850	52.1	119.3	7,250	125
130	45.7	120.2	6,410				130
135	43.1	114.4	5,990				135
140	40.3	108.1	5,590				140
145	37.4	101.0	5,240				145
150	34.3	93.2	4,910				150



Liftcrane Jib Capacities

54,900 LB. Crane Counterweight
 14,700 LB. Carbody Counterweight
 Extended Position Crawlers
 360 Degree Rating

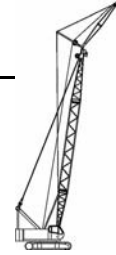
Meets
 ANSI B30.5
 Requirements



8000 SERIES 3

50 Ft. JIB

Load Radius (ft)	10 Degree Offset			30 Degree Offset			Load Radius (ft)
	Boom Angle (deg)	Jib Point Elev. (ft)	Rated Load (lbs)	Boom Angle (deg)	Jib Point Elev. (ft)	Rated Load (lbs)	
130 Ft. Boom							
45	80.0	181.4	20,000 *				45
50	78.4	180.2	20,000 *				50
55	76.7	178.8	20,000 *				55
60	75.1	177.2	19,330 *	79.9	172.6	11,480 *	60
65	73.4	175.5	18,140 *	78.2	170.8	11,020 *	65
70	71.7	173.6	16,710	76.5	168.9	10,620 *	70
75	69.9	171.5	15,030	74.6	166.8	10,200 *	75
80	68.2	169.3	13,690	72.8	164.4	9,850 *	80
85	66.5	166.8	12,520	71.0	161.9	9,540 *	85
90	64.7	164.2	11,480	69.2	159.2	9,230 *	90
95	62.8	161.4	10,510	67.2	156.3	8,950 *	95
100	61.0	158.3	9,700	65.3	153.2	8,700 *	100
105	59.1	155.1	8,950	63.4	149.8	8,480 *	105
110	57.2	151.6	8,310	61.4	146.1	8,260 *	110
115	55.1	147.8	7,670	59.2	142.2	8,040 *	115
120	53.1	143.7	7,120	57.1	137.9	7,600	120
125	51.0	139.3	6,630	54.9	133.4	7,070	125
130	48.8	134.6	6,170	52.6	128.4	6,590	130
135	46.6	129.5	5,750				135
140	44.1	124.0	5,350				140
145	41.7	117.9	5,000				145
150	39.1	111.3	4,670				150
155	36.3	104.0	4,360				155
160	33.1	95.9	4,030				160



Liftcrane Jib Capacities

54,900 LB. Crane Counterweight
14,700 LB. Carbody Counterweight
Extended Position Crawlers
360 Degree Rating

Meets
ANSI B30.5
Requirements

8000 SERIES 3

50 Ft. JIB

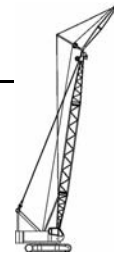
Load Radius (ft)	10 Degree Offset			30 Degree Offset			Load Radius (ft)
	Boom Angle (deg)	Boom Point Elev. (ft)	Rated Load (lbs)	Boom Angle (deg)	Boom Point Elev. (ft)	Rated Load (lbs)	
140 Ft. Boom							
50	79.1	190.5	20,000 *				50
55	77.4	189.2	20,000 *				55
60	75.9	187.7	19,970 *				60
65	74.3	186.1	18,360	78.8	181.4	11,170 *	65
70	72.8	184.3	16,510	77.2	179.5	10,780 *	70
75	71.1	182.3	14,830	75.5	177.5	10,380 *	75
80	69.4	180.2	13,490	73.8	175.4	10,030 *	80
85	67.8	178.0	12,300	72.1	173.0	9,720 *	85
90	66.2	175.5	11,260	70.4	170.5	9,430 *	90
95	64.4	172.9	10,290	68.6	167.8	9,120 *	95
100	62.7	170.0	9,470	66.8	164.9	8,880 *	100
105	60.9	167.0	8,730	65.0	161.7	8,660 *	105
110	59.2	163.8	8,060	63.2	158.4	8,440 *	110
115	57.2	160.3	7,420	61.2	154.7	8,000	115
120	55.4	156.5	6,900	59.3	150.9	7,420	120
125	53.5	152.5	6,390	57.3	146.7	6,900	125
130	51.6	148.3	5,930	55.3	142.3	6,390	130
135	49.5	143.7	5,510	53.1	137.4	5,950	135
140	47.3	138.7	5,090				140
145	45.1	133.4	4,730				145
150	42.9	127.6	4,400				150
155	40.5	121.4	4,030				155
160	37.8	114.5	3,680				160
165	35.1	106.9	3,370				165
170	32.2	98.5	3,080				170



Liftcrane Jib Capacities

54,900 LB. Crane Counterweight
 14,700 LB. Carbody Counterweight
 Extended Position Crawlers
 360 Degree Rating

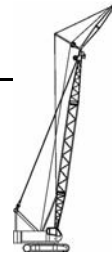
Meets
 ANSI B30.5
 Requirements



8000 SERIES 3

50 Ft. JIB

Load Radius (ft)	10 Degree Offset			30 Degree Offset			Load Radius (ft)
	Boom Angle (deg)	Jib Point Elev. (ft)	Rated Load (lbs)	Boom Angle (deg)	Jib Point Elev. (ft)	Rated Load (lbs)	
150 Ft. Boom							
50	79.6	200.8	20,000 *				50
55	78.1	199.5	20,000 *				55
60	76.6	198.1	20,000 *				60
65	75.1	196.6	18,200	79.4	191.8	11,330 *	65
70	73.7	194.9	16,350	77.9	190.1	10,930 *	70
75	72.1	193.1	14,680	76.3	188.2	10,530 *	75
80	70.5	191.1	13,330	74.7	186.2	10,200 *	80
85	69.0	189.0	12,140	73.1	184.0	9,870 *	85
90	67.5	186.7	11,110	71.5	181.6	9,590 *	90
95	65.8	184.2	10,110	69.8	179.1	9,300 *	95
100	64.2	181.5	9,300	68.2	176.3	9,060 *	100
105	62.6	178.7	8,570	66.5	173.4	8,810 *	105
110	60.9	175.7	7,910	64.8	170.3	8,570	110
115	59.1	172.4	7,270	62.9	167.0	7,890	115
120	57.4	169.0	6,720	61.2	163.4	7,290	120
125	55.7	165.3	6,210	59.3	159.6	6,760	125
130	53.9	161.4	5,750	57.5	155.5	6,280	130
135	52.0	157.2	5,330	55.6	151.1	5,820	135
140	50.0	152.7	4,930	53.4	146.4	5,350	140
145	48.1	147.9	4,560				145
150	46.1	142.7	4,160				150
155	43.9	137.2	3,790				155
160	41.6	131.2	3,430				160
165	39.3	124.7	3,100				165
170	36.8	117.6	2,820				170
175	34.2	109.7	2,550				175



Liftcrane Jib Capacities

54,900 LB. Crane Counterweight
14,700 LB. Carbody Counterweight
Extended Position Crawlers
360 Degree Rating

Meets
ANSI B30.5
Requirements

8000 SERIES 3

50 Ft. JIB

Load Radius (ft)	10 Degree Offset			30 Degree Offset			Load Radius (ft)
	Boom Angle (deg)	Boom Point Elev. (ft)	Rated Load (lbs)	Boom Angle (deg)	Boom Point Elev. (ft)	Rated Load (lbs)	
160 Ft. Boom							
55	78.7	209.8	20,000 *				55
60	77.3	208.5	19,200 *				60
65	75.9	207.1	18,030	80.0	202.2	11,440 *	65
70	74.5	205.5	16,180	78.5	200.6	11,060 *	70
75	72.9	203.7	14,500	77.0	198.8	10,670 *	75
80	71.5	201.9	13,130	75.5	196.9	10,330 *	80
85	70.1	199.8	11,940	74.0	194.8	10,030 *	85
90	68.6	197.7	10,910	72.5	192.6	9,740 *	90
95	67.0	195.3	9,920	70.9	190.2	9,450 *	95
100	65.5	192.8	9,100	69.3	187.7	9,210 *	100
105	64.0	190.2	8,370	67.8	184.9	8,970 *	105
110	62.5	187.3	7,690	66.2	182.0	8,420	110
115	60.8	184.3	7,050	64.5	178.9	7,730	115
120	59.2	181.1	6,500	62.8	175.6	7,140	120
125	57.6	177.7	6,010	61.1	172.0	6,610	125
130	55.9	174.0	5,550	59.4	168.3	6,100	130
135	54.2	170.2	5,130	57.6	164.2	5,640	135
140	52.4	166.0	4,670	55.7	160.0	5,200	140
145	50.6	161.6	4,250	53.8	155.4	4,800	145
150	48.7	157.0	3,850	51.9	150.5	4,430	150
155	46.8	152.0	3,480				155
160	44.8	146.6	3,100				160
165	42.7	140.8	2,790				165



Liftcrane Jib Capacities

54,900 LB. Crane Counterweight
 14,700 LB. Carbody Counterweight
 Extended Position Crawlers
 360 Degree Rating

Meets
 ANSI B30.5
 Requirements



8000 SERIES 3

50 Ft. JIB

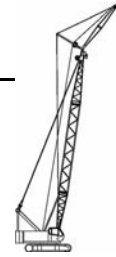
Load Radius (ft)	10 Degree Offset			30 Degree Offset			Load Radius (ft)
	Boom Angle (deg)	Jib Point Elev. (ft)	Rated Load (lbs)	Boom Angle (deg)	Jib Point Elev. (ft)	Rated Load (lbs)	
170 Ft. Boom							
55	79.2	220.1	18,500 *				55
60	77.9	218.9	17,800 *				60
65	76.5	217.5	17,100 *				65
70	75.2	216.0	15,980	79.1	211.1	11,170 *	70
75	73.8	214.3	14,280	77.6	209.4	10,800 *	75
80	72.4	212.5	12,940	76.2	207.6	10,490 *	80
85	71.0	210.6	11,750	74.8	205.6	10,180 *	85
90	69.6	208.6	10,690	73.4	203.5	9,890 *	90
95	68.2	206.4	9,720	71.9	201.2	9,610 *	95
100	66.7	204.0	8,880	70.4	198.8	9,360 *	100
105	65.3	201.5	8,150	68.9	196.2	8,970	105
110	63.9	198.8	7,470	67.4	193.5	8,240	110
115	62.3	196.0	6,830	65.8	190.6	7,560	115
120	60.8	193.0	6,280	64.3	187.5	6,960	120
125	59.3	189.8	5,770	62.7	184.2	6,410	125
130	57.7	186.4	5,310	61.1	180.7	5,930	130
135	56.1	182.8	4,870	59.5	176.9	5,460	135
140	54.4	178.9	4,360	57.7	173.0	5,000	140
145	52.8	174.9	3,920	56.0	168.8	4,620	145
150	51.1	170.6	3,520	54.2	164.3	4,160	150
155	49.3	166.0	3,150	52.4	159.5	3,760	155
160	47.4	161.1	2,790				160



Liftcrane Jib Capacities

54,900 LB. Crane Counterweight
 14,700 LB. Carbody Counterweight
 Extended Position Crawlers
 360 Degree Rating

Meets
 ANSI B30.5
 Requirements



8000 SERIES 3

50 Ft. JIB

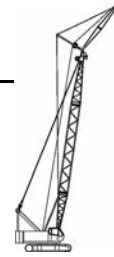
Load Radius (ft)	10 Degree Offset			30 Degree Offset			Load Radius (ft)
	Boom Angle (deg)	Boom Point Elev. (ft)	Rated Load (lbs)	Boom Angle (deg)	Boom Point Elev. (ft)	Rated Load (lbs)	
180 Ft. Boom							
55	79.7	230.4	17,000 *				55
60	78.4	229.2	16,400 *				60
65	77.1	227.9	15,800 *				65
70	75.9	226.4	15,200 *	79.6	221.5	11,300 *	70
75	74.5	224.9	13,980 *	78.2	219.9	10,930 *	75
80	73.2	223.2	12,760	76.9	218.2	10,600 *	80
85	71.9	221.3	11,570	75.5	216.3	10,310 *	85
90	70.6	219.4	10,510	74.2	214.3	10,030 *	90
95	69.2	217.3	9,520	72.7	212.2	9,740 *	95
100	67.8	215.1	8,700	71.4	209.9	9,500 *	100
105	66.5	212.7	7,950	70.0	207.4	8,810	105
110	65.1	210.2	7,290	68.5	204.8	8,110	110
115	63.6	207.5	6,630	67.0	202.1	7,400	115
120	62.2	204.6	6,080	65.6	199.2	6,810	120
125	60.8	201.6	5,570	64.1	196.1	6,260	125
130	59.3	198.4	5,090	62.6	192.8	5,770	130
135	57.8	195.1	4,580	61.1	189.3	5,310	135
140	56.2	191.5	4,070	59.4	185.6	4,850	140
145	54.7	187.7	3,630	57.8	181.7	4,380	145
150	53.1	183.7	3,240	56.2	177.6	3,940	150
155	51.5	179.5	2,860	54.5	173.2	3,520	155
160				52.7	168.5	3,100	160



Liftcrane Jib Capacities

54,900 LB. Crane Counterweight
14,700 LB. Carbody Counterweight
Extended Position Crawlers
360 Degree Rating

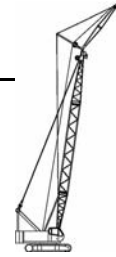
Meets
ANSI B30.5
Requirements



8000 SERIES 3

60 Ft. JIB

Load Radius (ft)	10 Degree Offset			30 Degree Offset			Load Radius (ft)
	Boom Angle (deg)	Jib Point Elev. (ft)	Rated Load (lbs)	Boom Angle (deg)	Jib Point Elev. (ft)	Rated Load (lbs)	
80 Ft. Boom							
40	79.8	141.5	18,000 *				40
45	77.7	140.0	17,940 *				45
50	75.6	138.4	16,330 *				50
55	73.3	136.5	14,900 *				55
60	71.2	134.5	13,750 *	78.7	129.9	8,950 *	60
65	69.0	132.1	12,780 *	76.4	127.5	8,480 *	65
70	66.7	129.6	11,900 *	74.1	124.8	8,060 *	70
75	64.2	126.8	11,110 *	71.5	121.9	7,670 *	75
80	61.9	123.7	10,440 *	69.0	118.7	7,340 *	80
85	59.5	120.3	9,850 *	66.5	115.1	7,030 *	85
90	57.0	116.6	9,320 *	63.9	111.2	6,760 *	90
95	54.2	112.5	8,810 *	60.9	106.9	6,500 *	95
100	51.5	108.0	8,390 *	58.1	102.2	6,280 *	100
105	48.7	103.0	8,020 *	55.0	96.9	6,100 *	105
110	45.7	97.5	7,670 *	51.8	91.0	5,930 *	110
115	42.3	91.4	7,340 *				115
120	38.8	84.5	7,050 *				120
125	35.1	76.5	6,810 *				125
90 Ft. Boom							
45	78.6	150.4	18,000 *				45
50	76.6	148.9	17,040 *				50
55	74.5	147.2	15,580 *				55
60	72.5	145.3	14,410 *	79.5	140.5	9,100 *	60
65	70.5	143.2	13,400 *	77.4	138.3	8,660 *	65
70	68.4	140.8	12,520 *	75.3	135.9	8,240 *	70
75	66.1	138.2	11,680 *	72.9	133.2	7,870 *	75
80	64.0	135.4	11,000 *	70.7	130.3	7,530 *	80
85	61.8	132.3	10,400 *	68.4	127.1	7,230 *	85
90	59.5	129.0	9,850 *	66.0	123.6	6,960 *	90
95	57.1	125.3	9,320 *	63.4	119.8	6,700 *	95
100	54.7	121.3	8,880 *	60.9	115.6	6,480 *	100
105	52.2	117.0	8,480 *	58.3	111.0	6,280 *	105
110	49.6	112.2	8,110 *	55.5	105.9	6,100 *	110
115	46.7	106.9	7,760 *	52.4	100.3	5,930 *	115
120	43.8	101.2	7,450 *				120
125	40.7	94.7	7,180 *				125
130	37.4	87.4	6,940 *				130
135	33.8	79.1	6,720 *				135



Liftcrane Jib Capacities

54,900 LB. Crane Counterweight
14,700 LB. Carbody Counterweight
Extended Position Crawlers
360 Degree Rating

Meets
ANSI B30.5
Requirements

8000 SERIES 3

60 Ft. JIB

Load Radius (ft)	10 Degree Offset			30 Degree Offset			Load Radius (ft)
	Boom Angle (deg)	Boom Point Elev. (ft)	Rated Load (lbs)	Boom Angle (deg)	Boom Point Elev. (ft)	Rated Load (lbs)	
100 Ft. Boom							
45	79.3	160.8	18,000 *				45
50	77.5	159.4	17,680 *				50
55	75.5	157.8	16,200 *				55
60	73.7	156.0	15,030 *				60
65	71.8	154.0	13,990 *	78.3	149.1	8,810 *	65
70	69.9	151.8	13,090 *	76.3	146.8	8,420 *	70
75	67.8	149.5	12,250 *	74.2	144.4	8,040 *	75
80	65.8	146.9	11,550 *	72.1	141.7	7,710 *	80
85	63.8	144.0	10,910 *	70.0	138.7	7,420 *	85
90	61.7	141.0	10,360 *	67.9	135.5	7,160 *	90
95	59.5	137.7	9,810 *	65.5	132.1	6,900 *	95
100	57.3	134.0	9,340 *	63.2	128.3	6,670 *	100
105	55.1	130.1	8,920 *	60.9	124.2	6,450 *	105
110	52.7	125.9	8,550 *	58.4	119.7	6,280 *	110
115	50.2	121.3	8,170 *	55.7	114.8	6,100 *	115
120	47.7	116.2	7,820 *	53.1	109.5	5,950 *	120
125	45.1	110.7	7,340 *				125
130	42.3	104.6	6,870 *				130
135	39.4	97.9	6,480 *				135
140	35.9	90.3	6,060 *				140
145	32.4	81.6	5,730 *				145
110 Ft. Boom							
45	80.0	171.1	18,000 *				45
50	78.3	169.8	18,000 *				50
55	76.4	168.3	16,820 *				55
60	74.7	166.6	15,600 *				60
65	72.9	164.8	14,570 *	79.1	159.7	8,970 *	65
70	71.1	162.7	13,640 *	77.2	157.6	8,570 *	70
75	69.2	160.5	12,780 *	75.2	155.3	8,200 *	75
80	67.3	158.1	12,050 *	73.3	152.8	7,890 *	80
85	65.5	155.5	11,410 *	71.4	150.1	7,580 *	85
90	63.6	152.7	10,840 *	69.4	147.2	7,310 *	90
95	61.5	149.6	10,270 *	67.2	144.0	7,050 *	95
100	59.5	146.3	9,780 *	65.2	140.6	6,830 *	100
105	57.5	142.8	9,360 *	63.0	136.9	6,630 *	105
110	55.4	138.9	8,840 *	60.9	132.8	6,430 *	110
115	53.1	134.8	8,200 *	58.4	128.5	6,260 *	115
120	50.9	130.3	7,640 *	56.1	123.7	6,100 *	120
125	48.6	125.4	7,160 *	53.6	118.6	5,970 *	125
130	46.2	120.1	6,700 *				130
135	43.6	114.3	6,300 *				135
140	40.8	108.0	5,880 *				140
145	37.9	100.9	5,530 *				145
150	34.8	93.1	5,220 *				150



Liftcrane Jib Capacities

54,900 LB. Crane Counterweight
 14,700 LB. Carbody Counterweight
 Extended Position Crawlers
 360 Degree Rating

Meets
 ANSI B30.5
 Requirements



8000 SERIES 3

60 Ft. JIB

Load Radius (ft)	10 Degree Offset			30 Degree Offset			Load Radius (ft)
	Boom Angle (deg)	Jib Point Elev. (ft)	Rated Load (lbs)	Boom Angle (deg)	Jib Point Elev. (ft)	Rated Load (lbs)	
120 Ft. Boom							
50	78.9	180.1	18,000 *				50
55	77.2	178.7	17,390 *				55
60	75.6	177.1	16,180 *				60
65	73.9	175.4	15,120 *	79.7	170.3	9,080 *	65
70	72.2	173.5	14,170 *	78.0	168.3	8,700 *	70
75	70.4	171.5	13,290 *	76.1	166.2	8,350 *	75
80	68.7	169.2	12,560 *	74.4	163.8	8,040 *	80
85	67.0	166.8	11,900 *	72.6	161.3	7,730 *	85
90	65.2	164.2	11,300 *	70.7	158.6	7,470 *	90
95	63.3	161.3	10,730 *	68.7	155.7	7,230 *	95
100	61.5	158.3	9,980	66.8	152.5	7,010 *	100
105	59.6	155.0	9,250	64.9	149.1	6,790 *	105
110	57.7	151.5	8,590	62.9	145.4	6,610 *	110
115	55.6	147.7	7,950	60.7	141.5	6,410 *	115
120	53.6	143.6	7,400	58.6	137.2	6,260 *	120
125	51.5	139.2	6,920	56.4	132.6	6,100 *	125
130	49.3	134.5	6,450	54.1	127.6	5,970 *	130
135	47.1	129.4	6,040	51.7	122.2	5,860 *	135
140	44.6	123.9	5,640				140
145	42.2	117.8	5,290				145
150	39.6	111.2	4,960				150
155	36.8	103.9	4,650				155
160	33.6	95.7	4,340				160



Liftcrane Jib Capacities

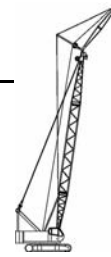
54,900 LB. Crane Counterweight
 14,700 LB. Carbody Counterweight
 Extended Position Crawlers
 360 Degree Rating

Meets
 ANSI B30.5
 Requirements

8000 SERIES 3

60 Ft. JIB

Load Radius (ft)	10 Degree Offset			30 Degree Offset			Load Radius (ft)
	Boom Angle (deg)	Boom Point Elev. (ft)	Rated Load (lbs)	Boom Angle (deg)	Boom Point Elev. (ft)	Rated Load (lbs)	
130 Ft. Boom							
50	79.5	190.4	18,000 *				50
55	77.9	189.1	17,920 *				55
60	76.3	187.6	16,710 *				60
65	74.8	186.0	15,630 *				65
70	73.2	184.2	14,680 *	78.7	178.9	8,840 *	70
75	71.5	182.3	13,800 *	76.9	176.9	8,480 *	75
80	69.9	180.2	13,050 *	75.3	174.7	8,170 *	80
85	68.3	177.9	12,360 *	73.6	172.4	7,890 *	85
90	66.6	175.4	11,570	71.9	169.8	7,620 *	90
95	64.8	172.8	10,580	70.0	167.1	7,360 *	95
100	63.1	170.0	9,760	68.3	164.2	7,140 *	100
105	61.4	166.9	9,030	66.5	161.0	6,940 *	105
110	59.6	163.7	8,370	64.6	157.6	6,740 *	110
115	57.7	160.2	7,730	62.6	154.0	6,560 *	115
120	55.9	156.5	7,180	60.7	150.1	6,390 *	120
125	54.0	152.5	6,670	58.7	145.9	6,230 *	125
130	52.0	148.2	6,230	56.6	141.5	6,100 *	130
135	50.0	143.6	5,820	54.5	136.6	5,970 *	135
140	47.8	138.6	5,400	52.2	131.4	5,840	140
145	45.6	133.3	5,040				145
150	43.3	127.5	4,710				150
155	41.0	121.2	4,400				155
160	38.3	114.4	4,070				160
165	35.6	106.8	3,760				165
170	32.7	98.3	3,480				170



Liftcrane Jib Capacities

54,900 LB. Crane Counterweight
14,700 LB. Carbody Counterweight
Extended Position Crawlers
360 Degree Rating

**Meets
 ANSI B30.5
 Requirements**

8000 SERIES 3

60 Ft. JIB

Load Radius (ft)	10 Degree Offset			30 Degree Offset			Load Radius (ft)
	Boom Angle (deg)	Jib Point Elev. (ft)	Rated Load (lbs)	Boom Angle (deg)	Jib Point Elev. (ft)	Rated Load (lbs)	
140 Ft. Boom							
55	78.5	199.4	18,000 *				55
60	77.0	198.1	17,210 *				60
65	75.6	196.5	16,130 *				65
70	74.1	194.8	15,160 *	79.3	189.4	8,950 *	70
75	72.5	193.0	14,260 *	77.7	187.6	8,590 *	75
80	71.0	191.0	13,490 *	76.1	185.5	8,310 *	80
85	69.4	188.9	12,410	74.5	183.3	8,020 *	85
90	67.9	186.6	11,350	72.9	180.9	7,760 *	90
95	66.2	184.1	10,380	71.2	178.4	7,510 *	95
100	64.6	181.4	9,540	69.5	175.6	7,270 *	100
105	63.0	178.6	8,810	67.8	172.7	7,070 *	105
110	61.4	175.6	8,150	66.1	169.6	6,870 *	110
115	59.6	172.3	7,490	64.3	166.2	6,700 *	115
120	57.9	168.9	6,960	62.5	162.6	6,520 *	120
125	56.1	165.2	6,450	60.7	158.8	6,370 *	125
130	54.3	161.3	5,990	58.8	154.7	6,230 *	130
135	52.5	157.1	5,570	56.9	150.3	6,100 *	135
140	50.5	152.6	5,150	54.7	145.6	5,640	140
145	48.5	147.8	4,800	52.7	140.5	5,240	145
150	46.5	142.6	4,470				150
155	44.4	137.1	4,100				155
160	42.0	131.1	3,720				160
165	39.7	124.6	3,410				165
170	37.3	117.4	3,130				170
175	34.6	109.6	2,840				175



Liftcrane Jib Capacities

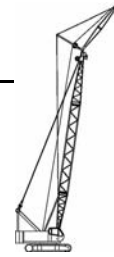
54,900 LB. Crane Counterweight
 14,700 LB. Carbody Counterweight
 Extended Position Crawlers
 360 Degree Rating

Meets
 ANSI B30.5
 Requirements

8000 SERIES 3

60 Ft. JIB

Load Radius (ft)	10 Degree Offset			30 Degree Offset			Load Radius (ft)
	Boom Angle (deg)	Boom Point Elev. (ft)	Rated Load (lbs)	Boom Angle (deg)	Boom Point Elev. (ft)	Rated Load (lbs)	
150 Ft. Boom							
55	79.1	209.8	18,000 *				55
60	77.7	208.4	17,700 *				60
65	76.3	207.0	16,600 *				65
70	74.9	205.4	15,650 *	79.9	199.9	9,060 *	70
75	73.4	203.7	14,720 *	78.3	198.1	8,700 *	75
80	71.9	201.8	13,420	76.8	196.2	8,420 *	80
85	70.5	199.8	12,230	75.3	194.1	8,130 *	85
90	69.0	197.6	11,190	73.8	191.9	7,890 *	90
95	67.4	195.3	10,200	72.2	189.5	7,620 *	95
100	65.9	192.8	9,390	70.6	186.9	7,400 *	100
105	64.4	190.1	8,640	69.1	184.2	7,200 *	105
110	62.9	187.3	7,980	67.5	181.2	7,010 *	110
115	61.2	184.2	7,340	65.7	178.1	6,830 *	115
120	59.6	181.0	6,790	64.1	174.8	6,650 *	120
125	58.0	177.6	6,280	62.4	171.2	6,500 *	125
130	56.3	173.9	5,820	60.7	167.4	6,370 *	130
135	54.6	170.1	5,400	58.9	163.4	5,970	135
140	52.8	165.9	4,980	57.0	159.1	5,530	140
145	51.0	161.5	4,620	55.1	154.5	5,130	145
150	49.2	156.9	4,230	53.1	149.6	4,760	150
155	47.3	151.8	3,850				155
160	45.2	146.5	3,480				160
165	43.1	140.7	3,170				165
170	41.0	134.5	2,860				170
175	38.7	127.8	2,600				175



Liftcrane Jib Capacities

54,900 LB. Crane Counterweight
14,700 LB. Carbody Counterweight
Extended Position Crawlers
360 Degree Rating

Meets
ANSI B30.5
 Requirements

8000 SERIES 3

60 Ft. JIB

Load Radius (ft)	10 Degree Offset			30 Degree Offset			Load Radius (ft)
	Boom Angle (deg)	Jib Point Elev. (ft)	Rated Load (lbs)	Boom Angle (deg)	Jib Point Elev. (ft)	Rated Load (lbs)	
160 Ft. Boom							
55	79.6	220.1	18,000 *				55
60	78.3	218.8	17,800 *				60
65	76.9	217.4	17,060 *				65
70	75.6	215.9	16,090 *				70
75	74.2	214.2	14,610	78.9	208.7	8,810 *	75
80	72.8	212.5	13,240	77.5	206.8	8,530 *	80
85	71.4	210.5	12,050	76.1	204.9	8,240 *	85
90	70.0	208.5	11,000	74.6	202.7	8,000 *	90
95	68.5	206.3	10,000	73.1	200.5	7,760 *	95
100	67.1	203.9	9,190	71.6	198.1	7,530 *	100
105	65.7	201.4	8,440	70.2	195.5	7,310 *	105
110	64.2	198.7	7,780	68.7	192.7	7,140 *	110
115	62.7	195.9	7,140	67.0	189.8	6,940 *	115
120	61.2	192.9	6,590	65.5	186.6	6,790 *	120
125	59.7	189.7	6,080	63.9	183.3	6,610 *	125
130	58.1	186.3	5,620	62.3	179.8	6,280	130
135	56.5	182.7	5,180	60.7	176.1	5,820	135
140	54.8	178.9	4,760	58.9	172.1	5,350	140
145	53.2	174.8	4,320	57.1	167.9	4,960	145
150	51.5	170.5	3,920	55.4	163.4	4,580	150
155	49.7	165.9	3,540	53.6	158.6	4,230	155
160	47.8	161.0	3,170	51.5	153.4	3,810	160
165	46.0	155.8	2,860				165
170	44.1	150.3	2,550				170



Liftcrane Jib Capacities

54,900 LB. Crane Counterweight
 14,700 LB. Carbody Counterweight
 Extended Position Crawlers
 360 Degree Rating

Meets
 ANSI B30.5
 Requirements

8000 SERIES 3

60 Ft. JIB

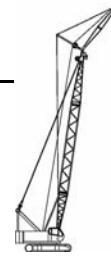
Load Radius (ft)	10 Degree Offset			30 Degree Offset			Load Radius (ft)
	Boom Angle (deg)	Boom Point Elev. (ft)	Rated Load (lbs)	Boom Angle (deg)	Boom Point Elev. (ft)	Rated Load (lbs)	
170 Ft. Boom							
55	80.0	230.3	17,000 *				55
60	78.8	229.1	16,400 *				60
65	77.5	227.8	15,800 *				65
70	76.2	226.3	15,200 *				70
75	74.9	224.8	13,980 *	79.4	219.1	8,900 *	75
80	73.6	223.1	13,050	78.1	217.4	8,610 *	80
85	72.3	221.3	11,860	76.7	215.5	8,350 *	85
90	71.0	219.3	10,800	75.4	213.5	8,110 *	90
95	69.5	217.2	9,810	73.9	211.4	7,870 *	95
100	68.2	215.0	8,970	72.5	209.1	7,640 *	100
105	66.8	212.6	8,220	71.1	206.6	7,450 *	105
110	65.5	210.1	7,560	69.7	204.0	7,250 *	110
115	64.0	207.4	6,920	68.2	201.3	7,050 *	115
120	62.6	204.6	6,340	66.7	198.3	6,900 *	120
125	61.1	201.5	5,860	65.2	195.2	6,610	125
130	59.7	198.3	5,370	63.7	191.9	6,100	130
135	58.2	195.0	4,960	62.2	188.4	5,640	135
140	56.6	191.4	4,450	60.5	184.7	5,180	140
145	55.1	187.6	4,010	58.9	180.8	4,780	145
150	53.5	183.6	3,610	57.3	176.6	4,380	150
155	51.9	179.4	3,240	55.6	172.2	3,960	155
160	50.2	174.9	2,860	53.8	167.5	3,540	160
165	48.5	170.1	2,530	52.0	162.5	3,170	165



Liftcrane Jib Capacities

54,900 LB. Crane Counterweight
14,700 LB. Carbody Counterweight
Extended Position Crawlers
360 Degree Rating

Meets
ANSI B30.5
 Requirements



8000 SERIES 3

60 Ft. JIB

Load Radius (ft)	10 Degree Offset			30 Degree Offset			Load Radius (ft)
	Boom Angle (deg)	Jib Point Elev. (ft)	Rated Load (lbs)	Boom Angle (deg)	Jib Point Elev. (ft)	Rated Load (lbs)	
180 Ft. Boom							
60	79.3	239.4	15,000 *				60
65	78.0	238.1	14,500 *				65
70	76.8	236.8	14,000 *				70
75	75.5	235.3	13,500 *	79.9	229.6	8,990 *	75
80	74.3	233.6	12,870	78.6	227.9	8,700 *	80
85	73.0	231.9	11,680	77.3	226.1	8,460 *	85
90	71.8	230.0	10,620	76.0	224.2	8,200 *	90
95	70.4	228.1	9,630	74.6	222.2	7,950 *	95
100	69.2	225.9	8,790	73.3	220.0	7,760 *	100
105	67.9	223.7	8,040	72.0	217.7	7,530 *	105
110	66.6	221.3	7,360	70.7	215.2	7,360 *	110
115	65.2	218.7	6,720	69.2	212.6	7,160 *	115
120	63.8	216.0	6,170	67.8	209.8	7,010 *	120
125	62.5	213.2	5,660	66.4	206.9	6,480	125
130	61.1	210.2	5,180	65.0	203.8	5,970	130
135	59.7	207.0	4,670	63.6	200.5	5,480	135
140	58.2	203.7	4,160	62.0	197.0	5,020	140
145	56.8	200.1	3,720	60.5	193.4	4,620	145
150	55.3	196.4	3,320	59.0	189.5	4,160	150
155	53.8	192.4	2,930	57.5	185.4	3,740	155
160	52.2	188.3	2,550	55.8	181.1	3,320	160
165				54.1	176.5	2,950	165
170				52.4	171.6	2,600	170