

# HDT 70 / US

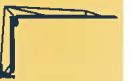
HD



HDT



GTMR



CITY CRANE



TOPKIT MD  
MAXI MD



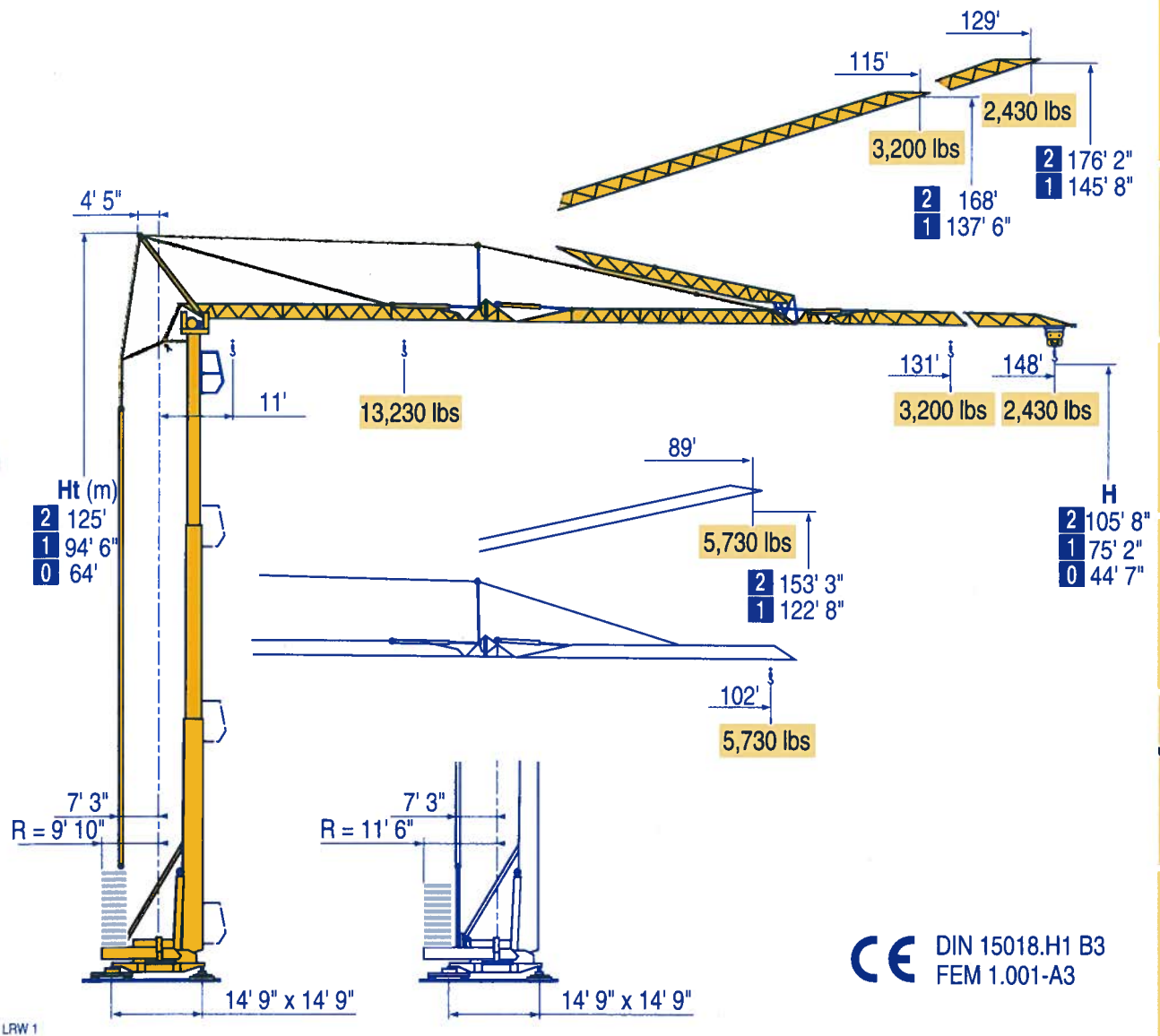
MAXI TOPKIT



Topless MDT



MR

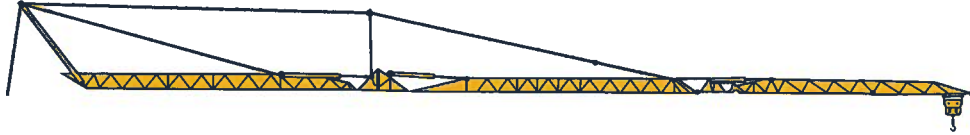


CE DIN 15018.H1 B3  
FEM 1.001-A3



**POTAIN**

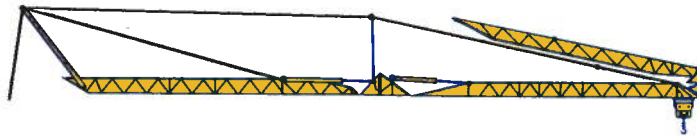
## Load diagrams



148'	11' ▶	38'	39'	43'	49'	56'	66'	67'	72'	82'	89'	98'	105'	115'	121'	131'	138'	148'	
▲/▼		13.2	12.41	11.2	9.35	7.98	6.5	-	5.75	4.89	4.43	3.86	3.54	3.14	2.91	2.61	2.44	2.2	1,000 x lbs
□								6.6	5.98	5.12	4.65	4.08	3.76	3.36	3.13	2.83	2.66	2.43	1,000 x lbs

131'	11' ▶		41'	43'	49'	56'	66'	72'	73'	82'	89'	98'	105'	115'	121'	131'			
▲/▼			13.2	12.48	10.41	8.91	7.28	6.46	-	5.49	4.98	4.35	4.01	3.56	3.31	2.98			1,000 x lbs
□								6.6	5.71	5.2	4.57	4.23	3.78	3.53	3.2				1,000 x lbs

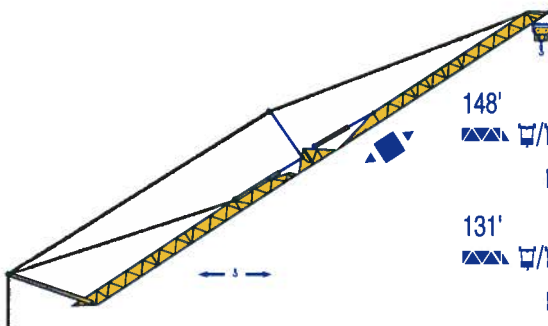
102'	11' ▶				50'	56'	66'	72'	82'	89'	90'	98'	102'						
▲/▼					13.2	11.49	9.44	8.4	7.19	6.53	-	5.73	5.51						1,000 x lbs
□										6.6	5.95	5.73							1,000 x lbs



148'	11' ▶		41'	43'	49'	56'	66'	72'	73'	82'	89'	98'	102'						
▲/▼			13.2	12.5	10.45	8.93	7.3	6.48	-	5.51	5	4.37	4.19						1,000 x lbs
□								6.6	5.73	5.23	4.59	4.41							1,000 x lbs

131'	11' ▶		42'	43'	49'	56'	66'	72'	76'	82'	89'	98'	102'						
▲/▼			13.2	13.1	10.94	9.35	7.65	6.79	-	5.8	5.25	4.61	4.41						1,000 x lbs
□								6.6	6.02	5.47	4.83	4.63							1,000 x lbs

## Luffing jib



148'	11' ▶	57'	58'	66'	72'	82'	89'	98'	105'	115'	121'	129'							
▲/▼		6.6	6.39	5.51	4.87	4.11	3.72	3.22	2.94	2.6	2.4	2.2							1,000 x lbs
□		6.6	5.73	5.09	4.33	3.94	3.44	3.16	2.82	2.62	2.43								1,000 x lbs

131'	11' ▶		62'	64'	72'	82'	89'	98'	105'	115'									
▲/▼			6.6	-	5.47	4.63	4.2	3.66	3.35	2.98									1,000 x lbs
□			6.6	5.69	4.85	4.42	3.88	3.57	3.2										1,000 x lbs

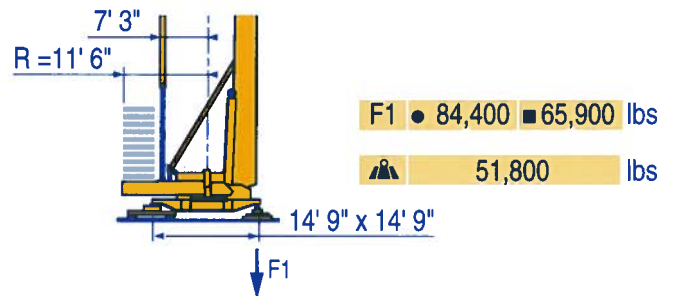
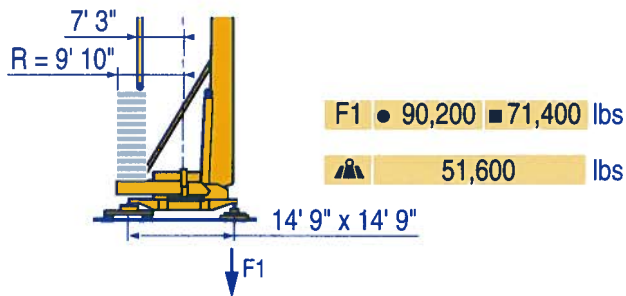
102'	11' ▶			77'	79'	82'	89'												
▲/▼				6.6	-	6.11	5.51												1,000 x lbs
□				6.6	6.33	5.73													1,000 x lbs

LRW 1



Traversing trolley

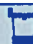













## Reactions



LRW 1

- Reactions in service
- Reactions out of service
- ▲ Without load, ballast (or transport axles), with maximum jib and maximum height.

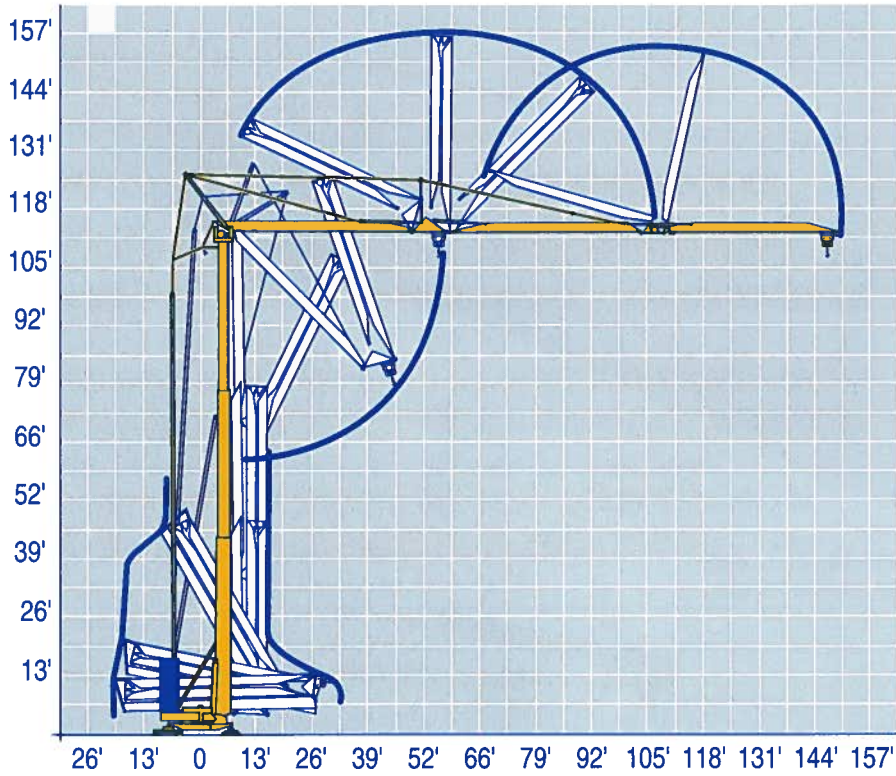
## Mechanisms

									ch - PS hp	kW
										
	20 LVF 15	fpm	21	106	213	11	53	106	24	18
		lbs	6,600	6,600	3,300	13,200	13,200	6,600		
	20 PC 15	fpm	26	106	213	13	53	106	24	18
		lbs	6,600	6,600	3,300	13,200	13,200	6,600		
	5 D3 V4.2	fpm	59 - 118 - 228						7.8	5.8
	RVF 60	rpm	0 → 0,96						9.6	7.1
	TVDS 124	fpm	98						2 x 4.8	2 x 3.6
	TBS 124	fpm	98						2 x 4.8	2 x 3.6
<b>CEI 38</b>  <b>IEC 38</b>						<b>kVA</b>				
480V (+6% -10%) 60 Hz						20 LVF 15 - 20 PC 15 : 42 kVA				

LRW 1

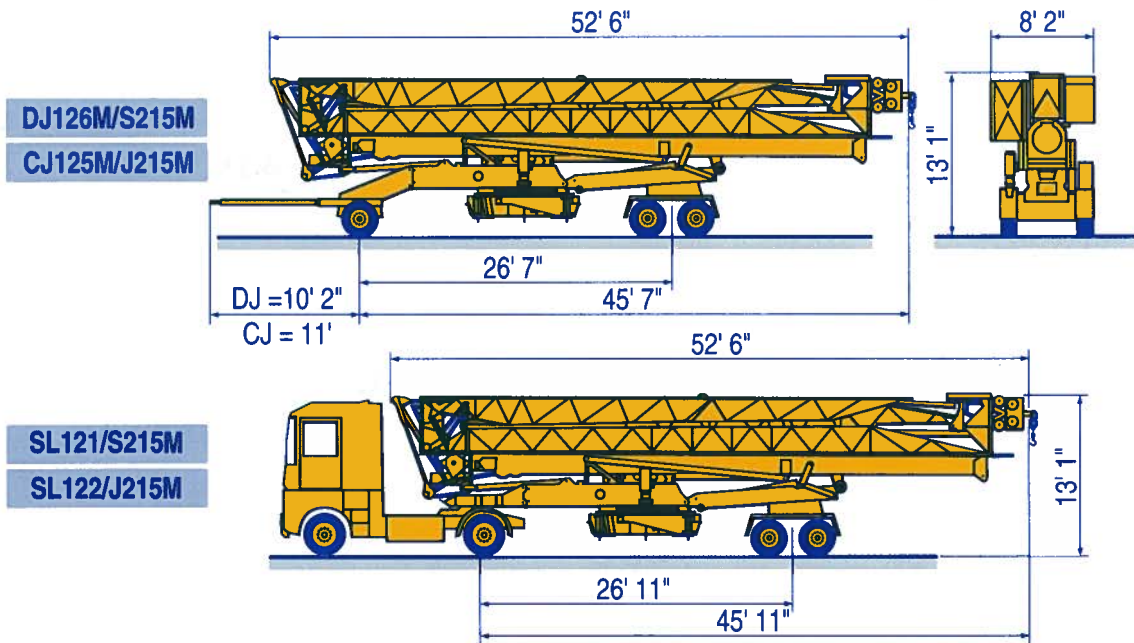
- Hoisting
- Trolleying
- Slewing
- Travelling

# Erection



LRW 1

# Transport



LRW 1

# POTAIN

GRUPE LEGRIS INDUSTRIES

18, Rue de Charbonnières, B.P. 173  
F-69132 ECULLY Cedex  
Tél. (33)04.72.18.20.20  
Fax (33)04.72.18.20.00  
<http://www.potain.com>  
E-mail : [mkt@potain.fr](mailto:mkt@potain.fr)

**HDT 70 / us**

Copyright. Reproduction interdite © POTAIN 1999

**Deutschland**

POTAIN GmbH

Tel : 06.105.704.0

**Italia**

POTAIN S.p.A.

Tel : 039.65.631

**Singapore**

POTAIN PTE LTD

Tel : (00.65) 227.1550

Réf. 1999.19 LRW 1

Subject to modification

Printed in France

Réalisation HeadLines