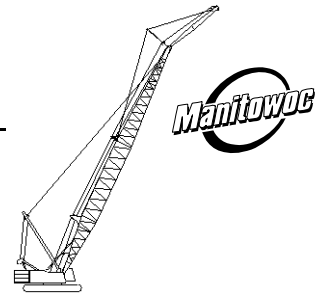


Liftcrane Jib Capacities

New York City Code
Jib No. 123 With 12 Ft. 6 in. Strut On
Boom No. 82LR
149,600 Lb. Counterweight
360 Degree Rating

Meets
ANSI B30.5
Requirements



999 SERIES 1

LIFTING CAPACITIES: Chart supplements boom capacity chart **No. 8320-A**. Lifting capacities for various boom lengths, jib lengths and jib operating radii are for freely suspended loads and do not exceed 75% of a static tipping load for boom and jib length combinations thru 250 Ft. and New York City criteria of 1.4 factor applied to total machine moment for boom and jib length combinations 260 Ft. on up. Capacities based on structural competence are denoted by an asterisk (*).

Weight of all load blocks, hooks, weight ball, slings, hoist lines, etc., beneath boom and jib point sheaves, is considered part of jib load. Boom and jib are not to be lowered beyond radii where combined weights are greater than rated capacity. Where no capacity is shown, operation is not intended or approved.

OPERATING CONDITIONS: Machine to operate in a level position on a firm uniformly supporting surface with gantry up. Refer to boom rigging **No. 196100**, jib assembly **No. 196264** and Wire Rope Specification chart **No. 8315-A**. Crane operator judgment must be used to allow for dynamic load effects of swinging, hoisting or lowering, travel, wind conditions, as well as adverse operating conditions and physical machine depreciation. Refer to operators manual for operating guidelines.

MACHINE TRAVEL: Machine to travel on a firm, level and uniformly supporting surface and boom within boom angle

range shown in capacity chart. Refer to Maximum Allowable Travel Specification chart **No. 8316-A**.

OPERATING RADIUS: Operating radius is horizontal distance from axis of rotation to center of vertical hoist line or load block. Boom angle is angle between horizontal and centerline of boom butt and inserts, and is an indication of operating radius. In all cases, operating radius shall govern capacity.

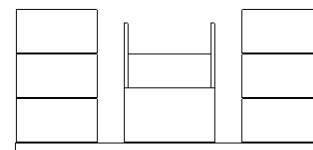
JIB POINT ELEVATION: Jib point elevation is vertical distance from ground level to centerline of jib point shaft.

MACHINE EQUIPMENT: Machine equipped with 28 Ft. 2 in. crawlers, 48 in. treads, 10 Ft. 3 in. retractable gantry, 30 Ft. live mast, 20 part boom hoist reeving, boom support straps and 149,600 Lb. counterweight.

Maximum capacity on 26 mm wire rope is 29,500 Lbs. per line (20,000 Lbs. on 26 mm or 1 in. wire rope when auxiliary drum is used).

Maximum Boom and Jib Lengths Lifted Unassisted			
Over End of Blocked Crawlers		Over Side of Crawlers	
Boom Length	Jib No. 123	Boom Length	Jib No. 123
280 Ft.	—	260 Ft.	—
270 Ft.	—	250 Ft.	—
260 Ft.	50 Ft.	240 Ft.	40 Ft.
250 Ft.	60 Ft.	230 Ft.	60 Ft.

Load block, hook and weight ball on ground at start.



149,600 Lb. Crane Counterweight
6 Side Boxes - 1 Center Box



Liftcrane Jib Capacities

New York City Code
Jib No. 123 With 12 Ft. 6 in. Strut On
Boom No. 82LR
149,600 Lb. Counterweight
360 Degree Rating

Meets
ANSI B30.5
Requirements

999 SERIES 1

30 Ft. JIB

Jib Oper. Rad. Feet	0 Degree Offset			10 Degree Offset			20 Degree Offset			Jib Oper. Rad. Feet
	Boom Ang. Deg.	Jib Point Elev. Feet	Jib Capacity Pounds	Boom Ang. Deg.	Jib Point Elev. Feet	Jib Capacity Pounds	Boom Ang. Deg.	Jib Point Elev. Feet	Jib Capacity Pounds	
120 Ft. BOOM										
35	79.3	156.7	40,000 *							35
40	77.4	155.6	40,000 *	79.3	155.0	40,000*				40
45	75.4	154.3	40,000 *	77.3	153.7	40,000*	79.2	152.2	40,000*	45
50	73.5	152.9	40,000 *	75.4	152.2	40,000*	77.2	150.7	40,000*	50
55	71.5	151.2	40,000 *	73.4	150.6	40,000*	75.2	149.0	40,000*	55
60	69.5	149.4	40,000 *	71.3	148.7	40,000*	73.1	147.2	40,000*	60
65	67.4	147.3	40,000 *	69.3	146.6	40,000*	71.0	145.1	40,000*	65
70	65.4	145.1	40,000 *	67.2	144.4	40,000*	68.9	142.8	40,000*	70
75	63.2	142.6	40,000 *	65.1	141.9	40,000*	66.8	140.3	40,000*	75
80	61.1	139.9	40,000 *	62.9	139.1	40,000*	64.6	137.5	40,000*	80
85	58.9	136.9	40,000 *	60.7	136.1	40,000*	62.3	134.4	38,700*	85
90	56.6	133.6	40,000 *	58.4	132.9	40,000*	60.1	131.1	37,400*	90
100	51.9	126.2	37,700	53.7	125.4	38,000	55.2	123.6	35,100*	100
110	46.9	117.4	32,800	48.6	116.6	33,200	50.1	114.6	33,200*	110
120	41.4	106.9	28,900	43.1	105.9	29,200	44.4	103.7	29,400	120
130	35.2	93.9	25,600	36.8	92.7	25,800				130
140	27.8	77.0	22,800	29.3	75.6	22,900				140
130 Ft. BOOM										
35	80.0	166.9	40,000 *							35
40	78.2	165.9	40,000 *	80.0	165.2	40,000*				40
45	76.4	164.7	40,000 *	78.1	164.0	40,000*	79.9	162.5	40,000*	45
50	74.5	163.3	40,000 *	76.3	162.7	40,000*	78.0	161.1	40,000*	50
55	72.7	161.8	40,000 *	74.4	161.1	40,000*	76.1	159.6	40,000*	55
60	70.8	160.1	40,000 *	72.5	159.4	40,000*	74.2	157.8	40,000*	60
65	68.9	158.2	40,000 *	70.6	157.5	40,000*	72.3	155.9	40,000*	65
70	67.0	156.1	40,000 *	68.7	155.4	40,000*	70.4	153.8	40,000*	70
75	65.0	153.8	40,000 *	66.7	153.0	40,000*	68.4	151.4	40,000*	75
80	63.0	151.3	40,000 *	64.8	150.5	40,000*	66.4	148.9	40,000*	80
85	61.0	148.5	40,000 *	62.7	147.8	40,000*	64.3	146.1	39,900*	85
90	59.0	145.5	40,000 *	60.6	144.8	40,000*	62.2	143.1	38,600*	90
100	54.7	138.8	37,400	56.3	138.0	37,800	57.8	136.2	36,300*	100
110	50.2	130.9	32,600	51.8	130.1	32,900	53.2	128.2	33,200	110
120	45.3	121.6	28,700	46.9	120.7	28,900	48.3	118.6	29,200	120
130	40.0	110.5	25,400	41.6	109.5	25,600	42.8	107.2	25,800	130
140	34.0	96.9	22,500	35.5	95.7	22,700				140
150	26.9	79.4	20,100							150



Liftcrane Jib Capacities

New York City Code
Jib No. 123 With 12 Ft. 6 in. Strut On
Boom No. 82LR
149,600 Lb. Counterweight
360 Degree Rating

Meets
ANSI B30.5
Requirements

999 SERIES 1

30 Ft. JIB

Jib Oper. Rad. Feet	0 Degree Offset			10 Degree Offset			20 Degree Offset			Jib Oper. Rad. Feet
	Boom Ang. Deg.	Jib Point Elev. Feet	Jib Capacity Pounds	Boom Ang. Deg.	Jib Point Elev. Feet	Jib Capacity Pounds	Boom Ang. Deg.	Jib Point Elev. Feet	Jib Capacity Pounds	
140 Ft. BOOM										
35	80.6	177.1	40,000 *							35
40	78.9	176.1	40,000 *	80.6	175.4	40,000*				40
45	77.2	175.0	40,000 *	78.8	174.3	40,000*	80.5	172.8	40,000*	45
50	75.5	173.7	40,000 *	77.1	173.0	40,000*	78.7	171.5	40,000*	50
55	73.7	172.3	40,000 *	75.4	171.6	40,000*	77.0	170.1	40,000*	55
60	72.0	170.7	40,000 *	73.6	170.0	40,000*	75.2	168.4	40,000*	60
65	70.2	168.9	40,000 *	71.8	168.2	40,000*	73.4	166.6	40,000*	65
70	68.4	166.9	40,000 *	70.0	166.2	40,000*	71.6	164.6	40,000*	70
75	66.6	164.8	40,000 *	68.2	164.1	40,000*	69.7	162.5	40,000*	75
80	64.7	162.5	40,000 *	66.4	161.7	40,000*	67.9	160.1	40,000*	80
85	62.9	159.9	40,000 *	64.5	159.2	40,000*	66.0	157.5	40,000*	85
90	61.0	157.2	40,000 *	62.6	156.4	40,000*	64.0	154.7	39,700*	90
100	57.0	151.0	37,100	58.6	150.2	37,600	60.0	148.5	37,400*	100
110	52.9	143.8	32,300	54.5	143.0	32,700	55.9	141.1	33,000	110
120	48.6	135.5	28,400	50.1	134.6	28,700	51.4	132.6	29,000	120
130	43.9	125.7	25,100	45.4	124.7	25,300	46.6	122.5	25,600	130
140	38.8	114.0	22,300	40.2	113.0	22,500	41.3	110.6	22,700	140
150	33.0	99.8	19,900	34.3	98.6	20,000				150
160	26.0	81.7	17,700							160
150 Ft. BOOM										
40	79.5	186.3	40,000 *							40
45	77.9	185.3	40,000 *	79.5	184.6	40,000*	81.0	183.1	40,000*	45
50	76.3	184.0	40,000 *	77.8	183.4	40,000*	79.4	181.8	40,000*	50
55	74.6	182.7	40,000 *	76.2	182.0	40,000*	77.7	180.5	40,000*	55
60	73.0	181.2	40,000 *	74.6	180.5	40,000*	76.1	178.9	40,000*	60
65	71.3	179.5	40,000 *	72.9	178.8	40,000*	74.4	177.2	40,000*	65
70	69.6	177.7	40,000 *	71.2	177.0	40,000*	72.7	175.4	40,000*	70
75	67.9	175.7	40,000 *	69.5	175.0	40,000*	71.0	173.4	40,000*	75
80	66.2	173.5	40,000 *	67.8	172.8	40,000*	69.2	171.1	40,000*	80
85	64.5	171.1	40,000 *	66.0	170.4	40,000*	67.4	168.7	40,000*	85
90	62.7	168.6	40,000 *	64.2	167.8	40,000*	65.6	166.2	40,000*	90
100	59.1	162.9	36,800	60.6	162.1	37,300	61.9	160.4	37,700	100
110	55.3	156.3	32,000	56.8	155.5	32,400	58.1	153.6	32,800	110
120	51.3	148.6	28,100	52.8	147.8	28,400	54.1	145.9	28,700	120
130	47.1	139.8	24,800	48.5	138.9	25,100	49.8	136.9	25,300	130
140	42.6	129.6	22,000	44.0	128.6	22,200	45.1	126.3	22,400	140
150	37.6	117.4	19,600	39.0	116.3	19,800	40.0	113.8	19,900	150
160	32.0	102.7	17,500	33.3	101.4	17,600				160
170	25.3	83.9	15,600							170



Liftcrane Jib Capacities

New York City Code
 Jib No. 123 With 12 Ft. 6 in. Strut On
 Boom No. 82LR
 149,600 Lb. Counterweight
 360 Degree Rating

Meets
ANSI B30.5
Requirements

999 SERIES 1

30 Ft. JIB

Jib Oper. Rad. Feet	0 Degree Offset			10 Degree Offset			20 Degree Offset			Jib Oper. Rad. Feet
	Boom Ang. Deg.	Jib Point Elev. Feet	Jib Capacity Pounds	Boom Ang. Deg.	Jib Point Elev. Feet	Jib Capacity Pounds	Boom Ang. Deg.	Jib Point Elev. Feet	Jib Capacity Pounds	
160 Ft. BOOM										
40	80.1	196.5	40,000*							40
45	78.5	195.5	40,000*	80.0	194.8	40,000*				45
50	77.0	194.4	40,000*	78.5	193.7	40,000*	80.0	192.1	40,000*	50
55	75.5	193.1	40,000*	76.9	192.4	40,000*	78.4	190.8	40,000*	55
60	73.9	191.6	40,000*	75.4	191.0	40,000*	76.8	189.4	40,000*	60
65	72.3	190.1	40,000*	73.8	189.4	40,000*	75.2	187.8	40,000*	65
70	70.8	188.3	40,000*	72.2	187.6	40,000*	73.6	186.0	40,000*	70
75	69.2	186.5	40,000*	70.6	185.7	40,000*	72.0	184.1	40,000*	75
80	67.5	184.4	40,000*	69.0	183.7	40,000*	70.4	182.1	40,000*	80
85	65.9	182.2	40,000*	67.4	181.5	40,000*	68.7	179.8	40,000*	85
90	64.3	179.8	40,000*	65.7	179.1	40,000*	67.0	177.4	40,000*	90
100	60.9	174.5	36,300	62.3	173.7	36,900	63.6	172.0	37,300	100
110	57.4	168.4	31,500	58.8	167.6	32,000	60.0	165.8	32,400	110
120	53.7	161.4	27,600	55.1	160.5	28,000	56.3	158.6	28,300	120
130	49.9	153.3	24,300	51.2	152.4	24,600	52.4	150.4	24,900	130
140	45.8	144.1	21,500	47.1	143.1	21,800	48.2	141.0	22,000	140
150	41.4	133.3	19,100	42.7	132.3	19,300	43.7	130.0	19,500	150
160	36.6	120.7	17,000	37.8	119.6	17,200				160
170	31.1	105.5	15,100	32.3	104.1	15,300				170
180	24.6	86.1	13,500							180



Liftcrane Jib Capacities

New York City Code
Jib No. 123 With 12 Ft. 6 in. Strut On
Boom No. 82LR
149,600 Lb. Counterweight
360 Degree Rating

**Meets
 ANSI B30.5
 Requirements**

999 SERIES 1

30 Ft. JIB

Jib Oper. Rad. Feet	0 Degree Offset			10 Degree Offset			20 Degree Offset			Jib Oper. Rad. Feet
	Boom Ang. Deg.	Jib Point Elev. Feet	Jib Capacity Pounds	Boom Ang. Deg.	Jib Point Elev. Feet	Jib Capacity Pounds	Boom Ang. Deg.	Jib Point Elev. Feet	Jib Capacity Pounds	
170 Ft. BOOM										
40	80.6	206.6	40,000 *							40
45	79.1	205.7	40,000 *	80.5	205.0	40,000*				45
50	77.7	204.6	40,000 *	79.1	203.9	40,000*	80.5	202.4	40,000*	50
55	76.2	203.4	40,000 *	77.6	202.7	40,000*	79.0	201.2	40,000*	55
60	74.7	202.1	40,000 *	76.1	201.4	40,000*	77.5	199.8	40,000*	60
65	73.2	200.6	40,000 *	74.6	199.9	40,000*	76.0	198.3	40,000*	65
70	71.8	198.9	40,000 *	73.1	198.2	40,000*	74.5	196.6	40,000*	70
75	70.2	197.2	40,000 *	71.6	196.4	40,000*	73.0	194.8	40,000*	75
80	68.7	195.2	40,000 *	70.1	194.5	40,000*	71.4	192.9	40,000*	80
85	67.2	193.2	40,000 *	68.6	192.4	40,000*	69.9	190.8	40,000*	85
90	65.6	190.9	40,000 *	67.0	190.2	40,000*	68.3	188.5	40,000*	90
100	62.4	185.9	36,000	63.8	185.2	36,500	65.1	183.4	37,000	100
110	59.2	180.2	31,200	60.5	179.4	31,600	61.7	177.6	32,100	110
120	55.8	173.7	27,200	57.1	172.9	27,600	58.3	171.0	28,000	120
130	52.2	166.3	23,900	53.5	165.4	24,300	54.7	163.5	24,600	130
140	48.5	157.8	21,100	49.8	156.9	21,400	50.9	154.9	21,700	140
150	44.6	148.2	18,700	45.8	147.2	19,000	46.9	145.0	19,200	150
160	40.3	137.0	16,600	41.5	135.9	16,900	42.5	133.6	17,000	160
170	35.6	123.9	14,800	36.8	122.7	15,000				170
180	30.3	108.2	13,200	31.4	106.8	13,300				180
190	24.0	88.2	11,700							190



Liftcrane Jib Capacities

New York City Code
 Jib No. 123 With 12 Ft. 6 in. Strut On
 Boom No. 82LR
 149,600 Lb. Counterweight
 360 Degree Rating

Meets
ANSI B30.5
Requirements

999 SERIES 1

30 Ft. JIB

Jib Oper. Rad. Feet	0 Degree Offset			10 Degree Offset			20 Degree Offset			Jib Oper. Rad. Feet
	Boom Ang. Deg.	Jib Point Elev. Feet	Jib Capacity Pounds	Boom Ang. Deg.	Jib Point Elev. Feet	Jib Capacity Pounds	Boom Ang. Deg.	Jib Point Elev. Feet	Jib Capacity Pounds	
180 Ft. BOOM										
40	81.0	216.8	40,000 *							40
45	79.6	215.9	40,000 *	81.0	215.2	40,000*				45
50	78.3	214.9	40,000 *	79.6	214.2	40,000*	80.9	212.6	40,000*	50
55	76.9	213.7	40,000 *	78.2	213.0	40,000*	79.5	211.5	40,000*	55
60	75.5	212.4	40,000 *	76.8	211.7	40,000*	78.1	210.2	40,000*	60
65	74.1	211.0	40,000 *	75.4	210.3	40,000*	76.7	208.7	40,000*	65
70	72.6	209.5	40,000 *	74.0	208.8	40,000*	75.3	207.2	40,000*	70
75	71.2	207.8	40,000 *	72.5	207.1	40,000*	73.8	205.5	40,000*	75
80	69.8	206.0	40,000 *	71.1	205.2	40,000*	72.4	203.6	40,000*	80
85	68.3	204.0	40,000 *	69.6	203.3	40,000*	70.9	201.6	40,000*	85
90	66.8	201.9	40,000 *	68.2	201.1	40,000*	69.4	199.5	40,000*	90
100	63.9	197.2	35,700	65.2	196.4	36,200	66.4	194.7	36,700	100
110	60.8	191.8	30,800	62.1	191.0	31,300	63.3	189.3	31,800	110
120	57.6	185.7	26,900	58.9	184.9	27,300	60.0	183.1	27,700	120
130	54.3	178.8	23,600	55.6	178.0	24,000	56.7	176.1	24,300	130
140	50.9	171.0	20,800	52.1	170.2	21,100	53.2	168.2	21,400	140
150	47.3	162.2	18,400	48.5	161.3	18,700	49.5	159.2	18,900	150
160	43.4	152.1	16,300	44.6	151.1	16,500	45.6	148.9	16,700	160
170	39.3	140.6	14,400	40.4	139.5	14,600	41.3	137.0	14,800	170
180	34.7	127.0	12,800	35.8	125.8	13,000				180
190	29.6	110.8	11,400	30.6	109.4	11,500				190
200	23.4	90.2	10,000							200



Liftcrane Jib Capacities

New York City Code
 Jib No. 123 With 12 Ft. 6 in. Strut On
 Boom No. 82LR
 149,600 Lb. Counterweight
 360 Degree Rating

Meets
 ANSI B30.5
 Requirements

999 SERIES 1

30 Ft. JIB

Jib Oper. Rad. Feet	0 Degree Offset			10 Degree Offset			20 Degree Offset			Jib Oper. Rad. Feet
	Boom Ang. Deg.	Jib Point Elev. Feet	Jib Capacity Pounds	Boom Ang. Deg.	Jib Point Elev. Feet	Jib Capacity Pounds	Boom Ang. Deg.	Jib Point Elev. Feet	Jib Capacity Pounds	
190 Ft. BOOM										
45	80.1	226.1	40,000 *							45
50	78.8	225.1	40,000 *	80.1	224.4	40,000*				50
55	77.5	224.0	40,000 *	78.8	223.3	40,000*	80.0	221.7	40,000*	55
60	76.1	222.8	40,000 *	77.4	222.1	40,000*	78.7	220.5	40,000*	60
65	74.8	221.4	40,000 *	76.1	220.7	40,000*	77.3	219.1	40,000*	65
70	73.5	220.0	40,000 *	74.7	219.2	40,000*	76.0	217.6	40,000*	70
75	72.1	218.4	40,000 *	73.4	217.6	40,000*	74.6	216.0	40,000*	75
80	70.7	216.6	40,000 *	72.0	215.9	40,000*	73.2	214.3	40,000*	80
85	69.3	214.8	40,000 *	70.6	214.0	40,000*	71.8	212.4	40,000*	85
90	68.0	212.8	40,000 *	69.2	212.0	40,000*	70.4	210.4	40,000*	90
100	65.1	208.3	35,300	66.4	207.6	35,900	67.5	205.9	36,500	100
110	62.2	203.2	30,500	63.5	202.5	31,000	64.6	200.7	31,500	110
120	59.2	197.5	26,500	60.5	196.7	27,000	61.6	194.9	27,400	120
130	56.2	191.1	23,200	57.4	190.3	23,600	58.5	188.4	24,000	130
140	53.0	183.8	20,400	54.2	183.0	20,800	55.2	181.0	21,100	140
150	49.6	175.7	18,000	50.8	174.8	18,300	51.8	172.7	18,600	150
160	46.1	166.5	15,900	47.3	165.5	16,200	48.2	163.3	16,400	160
170	42.4	156.0	14,100	43.5	155.0	14,300	44.4	152.7	14,500	170
180	38.3	144.0	12,500	39.4	142.9	12,700	40.3	140.4	12,800	180
190	33.9	130.1	11,000	35.0	128.8	11,200				190
200	28.9	113.3	9,700	29.9	111.9	9,800				200
210	22.8	92.2	8,500							210



Liftcrane Jib Capacities

New York City Code
 Jib No. 123 With 12 Ft. 6 in. Strut On
 Boom No. 82LR
 149,600 Lb. Counterweight
 360 Degree Rating

Meets
ANSI B30.5
Requirements

999 SERIES 1

30 Ft. JIB

Jib Oper. Rad. Feet	0 Degree Offset			10 Degree Offset			20 Degree Offset			Jib Oper. Rad. Feet
	Boom Ang. Deg.	Jib Point Elev. Feet	Jib Capacity Pounds	Boom Ang. Deg.	Jib Point Elev. Feet	Jib Capacity Pounds	Boom Ang. Deg.	Jib Point Elev. Feet	Jib Capacity Pounds	
200 Ft. BOOM										
45	80.5	236.2	40,000 *							45
50	79.3	235.3	40,000 *	80.5	234.6	40,000*				50
55	78.0	234.2	40,000 *	79.3	233.5	40,000*	80.5	232.0	40,000*	55
60	76.8	233.1	40,000 *	78.0	232.4	40,000*	79.2	230.8	40,000*	60
65	75.5	231.8	40,000 *	76.7	231.1	40,000*	77.9	229.5	40,000*	65
70	74.2	230.4	40,000 *	75.4	229.7	40,000*	76.6	228.1	40,000*	70
75	72.9	228.9	40,000 *	74.1	228.2	40,000*	75.3	226.5	40,000*	75
80	71.6	227.2	40,000 *	72.8	226.5	40,000*	74.0	224.9	40,000*	80
85	70.3	225.5	40,000 *	71.5	224.7	40,000*	72.6	223.1	40,000*	85
90	69.0	223.5	40,000 *	70.2	222.8	40,000*	71.3	221.1	40,000*	90
100	66.3	219.3	34,800	67.5	218.6	35,500	68.6	216.9	36,000	100
110	63.5	214.5	30,000	64.7	213.8	30,500	65.8	212.0	31,000	110
120	60.7	209.1	26,000	61.9	208.3	26,500	63.0	206.6	26,900	120
130	57.8	203.1	22,700	59.0	202.3	23,100	60.0	200.4	23,500	130
140	54.8	196.3	19,900	56.0	195.4	20,300	57.0	193.5	20,600	140
150	51.7	188.7	17,500	52.9	187.8	17,800	53.8	185.8	18,100	150
160	48.5	180.2	15,400	49.6	179.3	15,700	50.5	177.2	15,900	160
170	45.0	170.6	13,600	46.1	169.6	13,800	47.0	167.4	14,000	170
180	41.4	159.8	11,900	42.5	158.7	12,200	43.3	156.4	12,300	180
190	37.5	147.4	10,500	38.5	146.3	10,700	39.3	143.7	10,800	190
200	33.1	133.0	9,200	34.1	131.7	9,300				200
210	28.2	115.8	8,000	29.1	114.3	8,100				210
220	22.3	94.1	6,900							220



Liftcrane Jib Capacities

New York City Code
Jib No. 123 With 12 Ft. 6 in. Strut On
Boom No. 82LR
149,600 Lb. Counterweight
360 Degree Rating

**Meets
 ANSI B30.5
 Requirements**

999 SERIES 1

30 Ft. JIB

Jib Oper. Rad. Feet	0 Degree Offset			10 Degree Offset			20 Degree Offset			Jib Oper. Rad. Feet
	Boom Ang. Deg.	Jib Point Elev. Feet	Jib Capacity Pounds	Boom Ang. Deg.	Jib Point Elev. Feet	Jib Capacity Pounds	Boom Ang. Deg.	Jib Point Elev. Feet	Jib Capacity Pounds	
210 Ft. BOOM										
45	80.9	246.4	40,000 *							45
50	79.7	245.5	40,000 *	80.9	244.8	40,000*				50
55	78.5	244.5	40,000 *	79.7	243.8	40,000*	80.9	242.2	40,000*	55
60	77.3	243.4	40,000 *	78.5	242.7	40,000*	79.6	241.1	40,000*	60
65	76.1	242.1	40,000 *	77.3	241.4	40,000*	78.4	239.8	40,000*	65
70	74.9	240.8	40,000 *	76.0	240.1	40,000*	77.2	238.5	40,000*	70
75	73.6	239.3	40,000 *	74.8	238.6	40,000*	75.9	237.0	40,000*	75
80	72.4	237.8	40,000 *	73.5	237.0	40,000*	74.7	235.4	40,000*	80
85	71.1	236.1	40,000 *	72.3	235.3	40,000*	73.4	233.7	40,000*	85
90	69.9	234.3	40,000 *	71.0	233.5	40,000*	72.1	231.9	40,000*	90
100	67.3	230.2	34,500	68.5	229.5	35,100	69.5	227.8	35,700	100
110	64.7	225.7	29,600	65.8	224.9	30,200	66.9	223.2	30,700	110
120	62.0	220.6	25,600	63.2	219.8	26,100	64.2	218.0	26,600	120
130	59.3	214.9	22,300	60.4	214.0	22,800	61.4	212.2	23,200	130
140	56.5	208.5	19,500	57.6	207.6	19,900	58.6	205.8	20,300	140
150	53.6	201.3	17,100	54.7	200.5	17,500	55.6	198.5	17,800	150
160	50.6	193.4	15,000	51.6	192.5	15,300	52.6	190.5	15,600	160
170	47.4	184.6	13,200	48.5	183.6	13,500	49.3	181.5	13,700	170
180	44.0	174.7	11,600	45.1	173.7	11,800	45.9	171.4	12,000	180
190	40.5	163.5	10,100	41.5	162.4	10,300	42.3	160.0	10,500	190
200	36.6	150.7	8,800	37.6	149.5	9,000				200
210	32.4	135.9	7,600	33.4	134.6	7,800				210
220	27.6	118.3	6,500							220
230	21.8	96.0	5,500							230



Liftcrane Jib Capacities

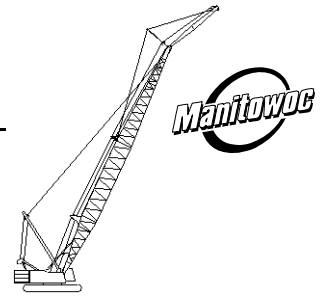
New York City Code
 Jib No. 123 With 12 Ft. 6 in. Strut On
 Boom No. 82LR
 149,600 Lb. Counterweight
 360 Degree Rating

Meets
 ANSI B30.5
 Requirements

999 SERIES 1

30 Ft. JIB

Jib Oper. Rad. Feet	0 Degree Offset			10 Degree Offset			20 Degree Offset			Jib Oper. Rad. Feet
	Boom Ang. Deg.	Jib Point Elev. Feet	Jib Capacity Pounds	Boom Ang. Deg.	Jib Point Elev. Feet	Jib Capacity Pounds	Boom Ang. Deg.	Jib Point Elev. Feet	Jib Capacity Pounds	
220 Ft. BOOM										
50	80.1	255.7	40,000 *							50
55	79.0	254.7	40,000 *	80.1	254.0	40,000*				55
60	77.8	253.6	40,000 *	79.0	252.9	40,000*	80.1	251.3	40,000*	60
65	76.7	252.4	40,000 *	77.8	251.7	40,000*	78.9	250.1	40,000*	65
70	75.5	251.2	40,000 *	76.6	250.4	40,000*	77.7	248.8	40,000*	70
75	74.3	249.8	40,000 *	75.4	249.0	40,000*	76.5	247.4	40,000*	75
80	73.1	248.3	40,000 *	74.2	247.5	40,000*	75.3	245.9	40,000*	80
85	71.9	246.6	40,000 *	73.0	245.9	40,000*	74.1	244.3	40,000*	85
90	70.7	244.9	40,000 *	71.8	244.2	40,000*	72.9	242.5	40,000*	90
100	68.3	241.1	34,100	69.4	240.3	34,700	70.4	238.6	35,400	100
110	65.8	236.7	29,200	66.9	236.0	29,800	67.9	234.3	30,400	110
120	63.2	231.9	25,200	64.3	231.1	25,800	65.3	229.3	26,300	120
130	60.7	226.5	21,900	61.7	225.7	22,400	62.7	223.9	22,800	130
140	58.0	220.4	19,100	59.1	219.6	19,500	60.0	217.7	19,900	140
150	55.3	213.7	16,700	56.3	212.9	17,100	57.3	210.9	17,400	150
160	52.4	206.3	14,600	53.5	205.4	14,900	54.4	203.4	15,200	160
170	49.5	198.0	12,800	50.5	197.1	13,100	51.4	195.0	13,300	170
180	46.4	188.9	11,200	47.4	187.9	11,400	48.2	185.7	11,600	180
190	43.1	178.6	9,700	44.1	177.6	9,900	44.9	175.3	10,100	190
200	39.6	167.1	8,400	40.6	166.0	8,600	41.4	163.5	8,800	200
210	35.9	153.9	7,200	36.8	152.7	7,400				210
220	31.7	138.7	6,200	32.6	137.4	6,300				220
230	27.0	120.6	5,200							230
240	21.4	97.9	4,300							240



Liftcrane Jib Capacities

Meets
ANSI B30.5
Requirements

New York City Code
Jib No. 123 With 12 Ft. 6 in. Strut On
Boom No. 82LR
149,600 Lb. Counterweight
360 Degree Rating

999 SERIES 1

30 Ft. JIB

Jib Oper. Rad. Feet	0 Degree Offset			10 Degree Offset			20 Degree Offset			Jib Oper. Rad. Feet
	Boom Ang. Deg.	Jib Point Elev. Feet	Jib Capacity Pounds	Boom Ang. Deg.	Jib Point Elev. Feet	Jib Capacity Pounds	Boom Ang. Deg.	Jib Point Elev. Feet	Jib Capacity Pounds	
230 Ft. BOOM										
50	80.5	265.8	40,000 *							50
55	79.4	264.9	40,000 *	80.5	264.2	40,000*				55
60	78.3	263.9	40,000 *	79.4	263.1	40,000*	80.5	261.5	40,000*	60
65	77.2	262.7	40,000 *	78.3	262.0	40,000*	79.3	260.4	40,000*	65
70	76.0	261.5	40,000 *	77.1	260.8	40,000*	78.2	259.2	40,000*	70
75	74.9	260.2	40,000 *	76.0	259.4	40,000*	77.0	257.8	40,000*	75
80	73.8	258.7	40,000 *	74.9	258.0	40,000*	75.9	256.4	40,000*	80
85	72.6	257.2	36,000	73.7	256.4	37,100	74.7	254.8	38,200	85
90	71.5	255.5	32,500	72.5	254.8	33,600	73.6	253.1	34,600	90
100	69.1	251.8	26,800	70.2	251.1	27,700	71.2	249.4	28,500	100
110	66.8	247.7	22,100	67.8	246.9	22,900	68.8	245.2	23,700	110
120	64.4	243.1	18,300	65.4	242.3	19,000	66.4	240.5	19,700	120
130	61.9	237.9	15,100	62.9	237.1	15,800	63.9	235.3	16,400	130
140	59.4	232.2	12,500	60.4	231.4	13,000	61.3	229.5	13,600	140
150	56.8	225.8	10,200	57.8	225.0	10,700	58.7	223.1	11,100	150
160	54.1	218.8	8,200	55.1	218.0	8,600	56.0	216.0	9,000	160
170	51.3	211.1	6,400	52.3	210.2	6,800	53.2	208.2	7,200	170
180	48.4	202.5	4,800	49.4	201.6	5,200	50.3	199.5	5,500	180
190							47.2	189.8	4,100	190
240 Ft. BOOM										
50	80.9	276.0	40,000 *							50
55	79.8	275.1	40,000 *	80.9	274.4	40,000*				55
60	78.7	274.1	40,000 *	79.8	273.4	40,000*	80.8	271.8	40,000*	60
65	77.7	273.0	40,000 *	78.7	272.3	40,000*	79.7	270.7	40,000*	65
70	76.6	271.8	40,000 *	77.6	271.1	40,000*	78.6	269.5	40,000*	70
75	75.5	270.5	40,000 *	76.5	269.8	40,000*	77.5	268.2	40,000*	75
80	74.4	269.1	39,300	75.4	268.4	40,000*	76.4	266.8	40,000*	80
85	73.3	267.7	35,300	74.3	266.9	36,500	75.3	265.3	37,600	85
90	72.2	266.1	31,800	73.2	265.3	32,900	74.2	263.7	34,000	90
100	69.9	262.5	26,000	71.0	261.8	27,000	71.9	260.1	27,900	100
110	67.7	258.6	21,400	68.7	257.8	22,200	69.7	256.1	23,000	110
120	65.4	254.2	17,600	66.4	253.4	18,300	67.3	251.6	19,000	120
130	63.0	249.2	14,400	64.0	248.4	15,100	64.9	246.7	15,700	130
140	60.6	243.8	11,700	61.6	243.0	12,300	62.5	241.1	12,900	140
150	58.1	237.8	9,400	59.1	236.9	10,000	60.0	235.1	10,400	150
160	55.6	231.1	7,400	56.6	230.3	7,900	57.5	228.3	8,300	160
170	53.0	223.8	5,600	54.0	222.9	6,100	54.8	221.0	6,500	170
180	50.3	215.8	4,100	51.3	214.9	4,500	52.1	212.8	4,800	180



Liftcrane Jib Capacities

New York City Code
Jib No. 123 With 12 Ft. 6 in. Strut On
Boom No. 82LR
149,600 Lb. Counterweight
360 Degree Rating

Meets
ANSI B30.5
Requirements

999 SERIES 1

30 Ft. JIB

Jib Oper. Rad. Feet	0 Degree Offset			10 Degree Offset			20 Degree Offset			Jib Oper. Rad. Feet
	Boom Ang. Deg.	Jib Point Elev. Feet	Jib Capacity Pounds	Boom Ang. Deg.	Jib Point Elev. Feet	Jib Capacity Pounds	Boom Ang. Deg.	Jib Point Elev. Feet	Jib Capacity Pounds	
250 Ft. BOOM										
55	80.2	285.2	40,000 *							55
60	79.1	284.3	40,000 *	80.2	283.6	40,000*				60
65	78.1	283.2	40,000 *	79.1	282.5	40,000*	80.1	280.9	40,000*	65
70	77.1	282.1	40,000 *	78.1	281.4	40,000*	79.1	279.8	40,000*	70
75	76.0	280.9	40,000 *	77.0	280.1	40,000*	78.0	278.5	40,000*	75
80	75.0	279.5	38,800	76.0	278.8	40,000*	76.9	277.2	40,000*	80
85	73.9	278.1	34,800	74.9	277.4	36,000	75.9	275.7	37,200	85
90	72.8	276.6	31,300	73.8	275.8	32,400	74.8	274.2	33,500	90
100	70.7	273.2	25,500	71.7	272.4	26,500	72.6	270.8	27,400	100
110	68.5	269.4	20,800	69.5	268.6	21,700	70.4	266.9	22,500	110
120	66.3	265.2	17,000	67.3	264.4	17,800	68.2	262.6	18,500	120
130	64.0	260.4	13,800	65.0	259.7	14,500	65.9	257.9	15,200	130
140	61.8	255.2	11,100	62.7	254.4	11,800	63.6	252.6	12,400	140
150	59.4	249.5	8,800	60.4	248.7	9,400	61.2	246.8	9,900	150
160	57.0	243.2	6,800	58.0	242.4	7,300	58.8	240.5	7,800	160
170	54.5	236.3	5,100	55.5	235.4	5,500	56.3	233.5	5,900	170
180							53.7	225.8	4,300	180
260 Ft. BOOM										
55	80.5	295.4	40,000 *							55
60	79.5	294.5	40,000 *	80.5	293.8	40,000*				60
65	78.5	293.5	40,000 *	79.5	292.7	40,000*	80.5	291.1	40,000*	65
70	77.5	292.4	40,000 *	78.5	291.6	40,000*	79.4	290.0	40,000*	70
75	76.5	291.2	40,000 *	77.5	290.5	40,000*	78.4	288.8	40,000*	75
80	75.5	289.9	38,200	76.5	289.2	39,600	77.4	287.5	40,000*	80
85	74.5	288.5	34,200	75.4	287.8	35,500	76.4	286.1	36,700	85
90	73.4	287.0	30,700	74.4	286.3	31,900	75.3	284.6	33,000	90
100	71.4	283.8	24,900	72.3	283.0	25,900	73.3	281.4	26,900	100
110	69.3	280.1	20,200	70.2	279.4	21,200	71.1	277.7	22,000	110
120	67.2	276.1	16,400	68.1	275.3	17,200	69.0	273.6	18,000	120
130	65.0	271.6	13,200	65.9	270.8	14,000	66.8	269.0	14,700	130
140	62.8	266.6	10,600	63.7	265.8	11,200	64.6	264.0	11,800	140
150	60.6	261.1	8,200	61.5	260.3	8,800	62.3	258.4	9,400	150
160	58.3	255.1	6,200	59.2	254.3	6,800	60.0	252.4	7,300	160
170	55.9	248.5	4,500	56.8	247.7	5,000	57.6	245.7	5,400	170



Liftcrane Jib Capacities

New York City Code
 Jib No. 123 With 12 Ft. 6 in. Strut On
 Boom No. 82LR
 149,600 Lb. Counterweight
 360 Degree Rating

Meets
 ANSI B30.5
 Requirements

999 SERIES 1

40 Ft. JIB

Jib Oper. Rad. Feet	0 Degree Offset			10 Degree Offset			20 Degree Offset			Jib Oper. Rad. Feet
	Boom Ang. Deg.	Jib Point Elev. Feet	Jib Capacity Pounds	Boom Ang. Deg.	Jib Point Elev. Feet	Jib Capacity Pounds	Boom Ang. Deg.	Jib Point Elev. Feet	Jib Capacity Pounds	
120 Ft. BOOM										
35	80.3	166.9	30,000 *							35
40	78.5	165.8	30,000 *	80.9	165.0	30,000*				40
45	76.7	164.7	30,000 *	79.1	163.8	30,000*				45
50	74.9	163.3	30,000 *	77.2	162.4	30,000*	79.6	160.5	30,000*	50
55	73.0	161.8	30,000 *	75.4	160.9	30,000*	77.7	158.9	30,000*	55
60	71.1	160.0	30,000 *	73.5	159.1	30,000*	75.8	157.2	30,000*	60
65	69.2	158.1	30,000 *	71.6	157.2	30,000*	73.8	155.2	30,000*	65
70	67.3	156.0	30,000 *	69.6	155.1	30,000*	71.9	153.1	30,000*	70
75	65.4	153.7	30,000 *	67.7	152.8	30,000*	69.9	150.8	30,000*	75
80	63.4	151.2	30,000 *	65.7	150.3	30,000*	67.8	148.2	30,000*	80
85	61.4	148.5	30,000 *	63.6	147.5	30,000*	65.8	145.4	29,200*	85
90	59.3	145.5	30,000 *	61.6	144.5	30,000*	63.7	142.4	28,200*	90
100	55.0	138.8	30,000 *	57.3	137.8	30,000*	59.3	135.5	26,400*	100
110	50.5	130.9	30,000 *	52.7	129.8	29,700*	54.6	127.4	24,900*	110
120	45.6	121.6	29,200	47.8	120.4	27,700*	49.6	117.7	23,700*	120
130	40.3	110.5	25,900	42.4	109.1	26,000*	44.1	106.2	22,600*	130
140	34.3	96.9	23,100	36.3	95.3	23,300				140
150	27.2	79.3	20,700							150
130 Ft. BOOM										
35	80.9	177.0	30,000 *							35
40	79.2	176.1	30,000 *							40
45	77.5	175.0	30,000 *	79.7	174.1	30,000*				45
50	75.8	173.7	30,000 *	78.0	172.8	30,000*	80.2	170.9	30,000*	50
55	74.0	172.2	30,000 *	76.3	171.3	30,000*	78.4	169.4	30,000*	55
60	72.3	170.6	30,000 *	74.5	169.7	30,000*	76.6	167.7	30,000*	60
65	70.5	168.8	30,000 *	72.7	167.9	30,000*	74.8	165.9	30,000*	65
70	68.7	166.9	30,000 *	70.9	166.0	30,000*	73.0	163.9	30,000*	70
75	66.9	164.8	30,000 *	69.1	163.8	30,000*	71.2	161.8	30,000*	75
80	65.1	162.4	30,000 *	67.2	161.5	30,000*	69.3	159.4	30,000*	80
85	63.2	159.9	30,000 *	65.3	158.9	30,000*	67.4	156.8	30,000*	85
90	61.3	157.1	30,000 *	63.4	156.2	30,000*	65.4	154.0	29,000*	90
100	57.3	151.0	30,000 *	59.5	149.9	30,000*	61.4	147.7	27,200*	100
110	53.2	143.8	30,000 *	55.3	142.7	30,000*	57.2	140.3	25,700*	110
120	48.9	135.4	29,000	50.9	134.3	28,900*	52.7	131.7	24,400*	120
130	44.2	125.6	25,700	46.2	124.4	26,000	47.9	121.6	23,300*	130
140	39.1	114.0	22,900	41.0	112.6	23,100	42.6	109.5	22,400*	140
150	33.3	99.8	20,400	35.1	98.2	20,600				150
160	26.3	81.6	18,300							160



Liftcrane Jib Capacities

New York City Code
Jib No. 123 With 12 Ft. 6 in. Strut On
Boom No. 82LR
149,600 Lb. Counterweight
360 Degree Rating

Meets
ANSI B30.5
Requirements

999 SERIES 1

40 Ft. JIB

Jib Oper. Rad. Feet	0 Degree Offset			10 Degree Offset			20 Degree Offset			Jib Oper. Rad. Feet
	Boom Ang. Deg.	Jib Point Elev. Feet	Jib Capacity Pounds	Boom Ang. Deg.	Jib Point Elev. Feet	Jib Capacity Pounds	Boom Ang. Deg.	Jib Point Elev. Feet	Jib Capacity Pounds	
140 Ft. BOOM										
40	79.8	186.3	30,000*							40
45	78.2	185.2	30,000*	80.3	184.3	30,000*				45
50	76.6	184.0	30,000*	78.7	183.1	30,000*	80.8	181.2	30,000*	50
55	74.9	182.7	30,000*	77.0	181.8	30,000*	79.1	179.8	30,000*	55
60	73.3	181.2	30,000*	75.4	180.2	30,000*	77.4	178.2	30,000*	60
65	71.6	179.5	30,000*	73.7	178.6	30,000*	75.7	176.5	30,000*	65
70	69.9	177.6	30,000*	72.0	176.7	30,000*	74.0	174.7	30,000*	70
75	68.2	175.6	30,000*	70.3	174.7	30,000*	72.3	172.6	30,000*	75
80	66.5	173.5	30,000*	68.6	172.5	30,000*	70.5	170.4	30,000*	80
85	64.8	171.1	30,000*	66.8	170.1	30,000*	68.8	168.0	30,000*	85
90	63.0	168.6	30,000*	65.0	167.6	30,000*	67.0	165.4	29,800*	90
100	59.4	162.8	30,000*	61.4	161.8	30,000*	63.2	159.6	28,000*	100
110	55.6	156.2	30,000*	57.6	155.2	30,000*	59.4	152.8	26,500*	110
120	51.6	148.6	28,700	53.6	147.5	29,100	55.3	145.0	25,100*	120
130	47.4	139.8	25,400	49.3	138.6	25,700	51.0	135.9	24,000*	130
140	42.9	129.5	22,600	44.8	128.2	22,900	46.3	125.3	23,000*	140
150	37.9	117.4	20,100	39.7	115.9	20,400	41.1	112.7	20,600	150
160	32.3	102.6	18,000	34.0	101.0	18,200				160
170	25.6	83.8	16,200							170
150 Ft. BOOM										
40	80.3	196.5	30,000*							40
45	78.8	195.5	30,000*	80.8	194.6	30,000*				45
50	77.3	194.3	30,000*	79.3	193.4	30,000*				50
55	75.7	193.0	30,000*	77.7	192.1	30,000*	79.7	190.1	30,000*	55
60	74.2	191.6	30,000*	76.2	190.7	30,000*	78.1	188.7	30,000*	60
65	72.6	190.0	30,000*	74.6	189.1	30,000*	76.5	187.1	30,000*	65
70	71.0	188.3	30,000*	73.0	187.4	30,000*	74.9	185.3	30,000*	70
75	69.4	186.4	30,000*	71.4	185.5	30,000*	73.3	183.4	30,000*	75
80	67.8	184.4	30,000*	69.8	183.4	30,000*	71.6	181.3	30,000*	80
85	66.2	182.2	30,000*	68.1	181.2	30,000*	70.0	179.1	30,000*	85
90	64.5	179.8	30,000*	66.5	178.8	30,000*	68.3	176.6	30,000*	90
100	61.1	174.5	30,000*	63.1	173.4	30,000*	64.8	171.2	28,700*	100
110	57.6	168.3	30,000*	59.5	167.3	30,000*	61.3	165.0	27,200*	110
120	54.0	161.3	28,400	55.8	160.2	28,800	57.5	157.8	25,800*	120
130	50.1	153.3	25,100	52.0	152.1	25,500	53.6	149.5	24,600*	130
140	46.1	144.0	22,300	47.9	142.8	22,600	49.4	140.0	22,900	140
150	41.7	133.3	19,900	43.4	131.9	20,100	44.9	128.9	20,400	150
160	36.9	120.7	17,800	38.6	119.2	18,000	39.8	115.8	18,200	160
170	31.4	105.4	15,900	33.0	103.7	16,100				170
180	24.9	86.0	14,200							180



Liftcrane Jib Capacities

New York City Code
Jib No. 123 With 12 Ft. 6 in. Strut On
Boom No. 82LR
149,600 Lb. Counterweight
360 Degree Rating

Meets
ANSI B30.5
Requirements

999 SERIES 1

40 Ft. JIB

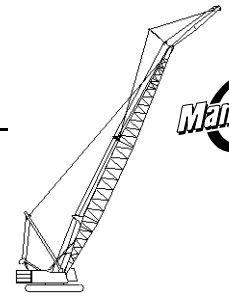
Jib Oper. Rad. Feet	0 Degree Offset			10 Degree Offset			20 Degree Offset			Jib Oper. Rad. Feet
	Boom Ang. Deg.	Jib Point Elev. Feet	Jib Capacity Pounds	Boom Ang. Deg.	Jib Point Elev. Feet	Jib Capacity Pounds	Boom Ang. Deg.	Jib Point Elev. Feet	Jib Capacity Pounds	
160 Ft. BOOM										
40	80.8	206.6	30,000 *							40
45	79.4	205.7	30,000 *							45
50	77.9	204.6	30,000 *	79.8	203.7	30,000*				50
55	76.5	203.4	30,000 *	78.4	202.5	30,000*	80.2	200.4	30,000*	55
60	75.0	202.0	30,000 *	76.9	201.1	30,000*	78.7	199.1	30,000*	60
65	73.5	200.5	30,000 *	75.4	199.6	30,000*	77.2	197.6	30,000*	65
70	72.0	198.9	30,000 *	73.9	198.0	30,000*	75.7	195.9	30,000*	70
75	70.5	197.1	30,000 *	72.4	196.2	30,000*	74.2	194.1	30,000*	75
80	69.0	195.2	30,000 *	70.9	194.2	30,000*	72.6	192.1	30,000*	80
85	67.4	193.1	30,000 *	69.3	192.1	30,000*	71.1	190.0	30,000*	85
90	65.9	190.9	30,000 *	67.7	189.9	30,000*	69.5	187.7	30,000*	90
100	62.7	185.9	30,000 *	64.5	184.9	30,000*	66.2	182.7	29,500*	100
110	59.4	180.2	30,000 *	61.2	179.1	30,000*	62.9	176.8	27,900*	110
120	56.0	173.6	27,900	57.8	172.6	28,400	59.4	170.2	26,500*	120
130	52.5	166.2	24,600	54.3	165.1	25,000	55.8	162.6	25,300*	130
140	48.8	157.8	21,800	50.5	156.6	22,100	52.0	153.9	22,500	140
150	44.8	148.1	19,300	46.5	146.8	19,700	47.9	144.0	19,900	150
160	40.6	136.9	17,200	42.2	135.5	17,500	43.5	132.5	17,700	160
170	35.9	123.9	15,400	37.5	122.3	15,600				170
180	30.6	108.1	13,800	32.1	106.3	13,900				180
190	24.2	88.1	12,300							190



Liftcrane Jib Capacities

New York City Code
 Jib No. 123 With 12 Ft. 6 in. Strut On
 Boom No. 82LR
 149,600 Lb. Counterweight
 360 Degree Rating

Meets
 ANSI B30.5
 Requirements



999 SERIES 1

40 Ft. JIB

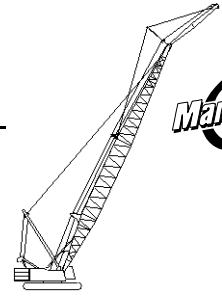
Jib Oper. Rad. Feet	0 Degree Offset			10 Degree Offset			20 Degree Offset			Jib Oper. Rad. Feet
	Boom Ang. Deg.	Jib Point Elev. Feet	Jib Capacity Pounds	Boom Ang. Deg.	Jib Point Elev. Feet	Jib Capacity Pounds	Boom Ang. Deg.	Jib Point Elev. Feet	Jib Capacity Pounds	
170 Ft. BOOM										
45	79.9	215.9	30,000*							45
50	78.5	214.8	30,000*	80.3	213.9	30,000*				50
55	77.1	213.7	30,000*	78.9	212.8	30,000*	80.7	210.7	30,000*	55
60	75.7	212.4	30,000*	77.5	211.5	30,000*	79.3	209.4	30,000*	60
65	74.3	211.0	30,000*	76.1	210.0	30,000*	77.9	208.0	30,000*	65
70	72.9	209.4	30,000*	74.7	208.5	30,000*	76.4	206.4	30,000*	70
75	71.5	207.8	30,000*	73.3	206.8	30,000*	75.0	204.7	30,000*	75
80	70.0	205.9	30,000*	71.8	205.0	30,000*	73.5	202.9	30,000*	80
85	68.6	204.0	30,000*	70.3	203.0	30,000*	72.0	200.9	30,000*	85
90	67.1	201.9	30,000*	68.9	200.9	30,000*	70.5	198.7	30,000*	90
100	64.1	197.1	30,000*	65.9	196.1	30,000*	67.5	193.9	30,000*	100
110	61.0	191.8	30,000*	62.8	190.7	30,000*	64.4	188.5	28,500*	110
120	57.9	185.7	27,500	59.6	184.6	28,000	61.1	182.2	27,100*	120
130	54.6	178.8	24,200	56.3	177.7	24,700	57.8	175.2	25,100	130
140	51.1	171.0	21,400	52.8	169.8	21,800	54.3	167.2	22,200	140
150	47.5	162.2	19,000	49.2	160.9	19,300	50.6	158.2	19,700	150
160	43.7	152.1	16,900	45.3	150.8	17,200	46.6	147.8	17,500	160
170	39.5	140.5	15,100	41.1	139.1	15,300	42.3	135.9	15,500	170
180	35.0	127.0	13,400	36.5	125.4	13,600				180
190	29.8	110.7	12,000	31.2	108.8	12,100				190
200	23.6	90.1	10,600							200



Liftcrane Jib Capacities

New York City Code
Jib No. 123 With 12 Ft. 6 in. Strut On
Boom No. 82LR
149,600 Lb. Counterweight
360 Degree Rating

Meets
ANSI B30.5
Requirements



999 SERIES 1

40 Ft. JIB

Jib Oper. Rad. Feet	0 Degree Offset			10 Degree Offset			20 Degree Offset			Jib Oper. Rad. Feet
	Boom Ang. Deg.	Jib Point Elev. Feet	Jib Capacity Pounds	Boom Ang. Deg.	Jib Point Elev. Feet	Jib Capacity Pounds	Boom Ang. Deg.	Jib Point Elev. Feet	Jib Capacity Pounds	
180 Ft. BOOM										
45	80.4	226.0	30,000 *							45
50	79.0	225.1	30,000 *	80.8	224.1	30,000*				50
55	77.7	224.0	30,000 *	79.4	223.0	30,000*				55
60	76.4	222.7	30,000 *	78.1	221.8	30,000*	79.8	219.7	30,000*	60
65	75.0	221.4	30,000 *	76.8	220.4	30,000*	78.4	218.4	30,000*	65
70	73.7	219.9	30,000 *	75.4	219.0	30,000*	77.1	216.9	30,000*	70
75	72.3	218.3	30,000 *	74.0	217.4	30,000*	75.7	215.3	30,000*	75
80	71.0	216.6	30,000 *	72.7	215.6	30,000*	74.3	213.5	30,000*	80
85	69.6	214.7	30,000 *	71.3	213.7	30,000*	72.9	211.6	30,000*	85
90	68.2	212.7	30,000 *	69.9	211.7	30,000*	71.5	209.6	30,000*	90
100	65.4	208.3	30,000 *	67.0	207.3	30,000*	68.6	205.1	30,000*	100
110	62.5	203.2	30,000 *	64.1	202.2	30,000*	65.7	199.9	29,200*	110
120	59.5	197.5	27,200	61.1	196.4	27,700	62.6	194.1	27,700*	120
130	56.4	191.0	23,800	58.0	189.9	24,300	59.5	187.5	24,800	130
140	53.2	183.8	21,000	54.8	182.6	21,500	56.2	180.1	21,900	140
150	49.9	175.6	18,600	51.5	174.4	19,000	52.8	171.8	19,300	150
160	46.4	166.4	16,500	47.9	165.1	16,900	49.2	162.3	17,200	160
170	42.6	156.0	14,700	44.1	154.6	15,000	45.4	151.6	15,200	170
180	38.6	144.0	13,100	40.1	142.5	13,300	41.2	139.2	13,500	180
190	34.1	130.0	11,600	35.6	128.3	11,800				190
200	29.1	113.3	10,300	30.4	111.3	10,400				200
210	23.0	92.1	9,100							210



Liftcrane Jib Capacities

New York City Code
 Jib No. 123 With 12 Ft. 6 in. Strut On
 Boom No. 82LR
 149,600 Lb. Counterweight
 360 Degree Rating

Meets
ANSI B30.5
Requirements

999 SERIES 1

40 Ft. JIB

Jib Oper. Rad. Feet	0 Degree Offset			10 Degree Offset			20 Degree Offset			Jib Oper. Rad. Feet
	Boom Ang. Deg.	Jib Point Elev. Feet	Jib Capacity Pounds	Boom Ang. Deg.	Jib Point Elev. Feet	Jib Capacity Pounds	Boom Ang. Deg.	Jib Point Elev. Feet	Jib Capacity Pounds	
190 Ft. BOOM										
45	80.8	236.2	30,000 *							45
50	79.5	235.3	30,000 *							50
55	78.3	234.2	30,000 *	79.9	233.3	30,000*				55
60	77.0	233.1	30,000 *	78.6	232.1	30,000*	80.3	230.0	30,000*	60
65	75.7	231.8	30,000 *	77.4	230.8	30,000*	79.0	228.7	30,000*	65
70	74.4	230.4	30,000 *	76.1	229.4	30,000*	77.7	227.3	30,000*	70
75	73.1	228.8	30,000 *	74.8	227.9	30,000*	76.3	225.8	30,000*	75
80	71.8	227.2	30,000 *	73.5	226.2	30,000*	75.0	224.1	30,000*	80
85	70.5	225.4	30,000 *	72.1	224.4	30,000*	73.7	222.3	30,000*	85
90	69.2	223.5	30,000 *	70.8	222.5	30,000*	72.3	220.4	30,000*	90
100	66.5	219.3	30,000 *	68.1	218.3	30,000*	69.6	216.1	30,000*	100
110	63.8	214.5	30,000 *	65.4	213.5	30,000*	66.8	211.2	29,800*	110
120	60.9	209.1	26,800	62.5	208.0	27,400	64.0	205.7	28,000	120
130	58.0	203.0	23,500	59.6	201.9	24,000	61.0	199.5	24,500	130
140	55.1	196.2	20,700	56.6	195.1	21,200	58.0	192.6	21,600	140
150	51.9	188.6	18,300	53.5	187.5	18,700	54.8	184.9	19,100	150
160	48.7	180.1	16,200	50.2	178.9	16,500	51.5	176.2	16,900	160
170	45.3	170.6	14,300	46.8	169.2	14,700	48.0	166.4	14,900	170
180	41.6	159.7	12,700	43.1	158.3	13,000	44.2	155.2	13,200	180
190	37.7	147.4	11,300	39.1	145.8	11,500	40.1	142.4	11,700	190
200	33.3	133.0	10,000	34.7	131.2	10,100				200
210	28.4	115.8	8,800	29.7	113.8	8,900				210
220	22.5	94.1	7,700							220



Liftcrane Jib Capacities

New York City Code
Jib No. 123 With 12 Ft. 6 in. Strut On
Boom No. 82LR
149,600 Lb. Counterweight
360 Degree Rating

Meets
ANSI B30.5
Requirements

999 SERIES 1

40 Ft. JIB

Jib Oper. Rad. Feet	0 Degree Offset			10 Degree Offset			20 Degree Offset			Jib Oper. Rad. Feet
	Boom Ang. Deg.	Jib Point Elev. Feet	Jib Capacity Pounds	Boom Ang. Deg.	Jib Point Elev. Feet	Jib Capacity Pounds	Boom Ang. Deg.	Jib Point Elev. Feet	Jib Capacity Pounds	
200 Ft. BOOM										
50	80.0	245.4	30,000 *							50
55	78.7	244.4	30,000 *	80.3	243.5	30,000*				55
60	77.5	243.3	30,000 *	79.1	242.4	30,000*	80.7	240.3	30,000*	60
65	76.3	242.1	30,000 *	77.9	241.1	30,000*	79.4	239.1	30,000*	65
70	75.1	240.8	30,000 *	76.7	239.8	30,000*	78.2	237.7	30,000*	70
75	73.8	239.3	30,000 *	75.4	238.3	30,000*	76.9	236.2	30,000*	75
80	72.6	237.7	30,000 *	74.2	236.8	30,000*	75.7	234.6	30,000*	80
85	71.4	236.0	30,000 *	72.9	235.1	30,000*	74.4	232.9	30,000*	85
90	70.1	234.2	30,000 *	71.6	233.2	30,000*	73.1	231.1	30,000*	90
100	67.5	230.2	30,000 *	69.1	229.2	30,000*	70.5	227.0	30,000*	100
110	64.9	225.7	30,000 *	66.5	224.6	30,000*	67.9	222.4	30,000*	110
120	62.3	220.5	26,300	63.8	219.5	26,900	65.2	217.2	27,500	120
130	59.5	214.8	23,000	61.0	213.7	23,500	62.4	211.3	24,100	130
140	56.7	208.4	20,200	58.2	207.3	20,700	59.5	204.8	21,100	140
150	53.8	201.3	17,800	55.3	200.1	18,200	56.6	197.6	18,600	150
160	50.8	193.4	15,700	52.2	192.2	16,000	53.5	189.5	16,400	160
170	47.6	184.5	13,800	49.0	183.3	14,200	50.2	180.5	14,500	170
180	44.3	174.6	12,200	45.7	173.3	12,500	46.8	170.3	12,700	180
190	40.7	163.4	10,700	42.1	162.0	11,000	43.2	158.8	11,200	190
200	36.9	150.7	9,400	38.2	149.1	9,600				200
210	32.6	135.9	8,200	33.9	134.1	8,400				210
220	27.8	118.2	7,200							220
230	22.0	96.0	6,200							230



Liftcrane Jib Capacities

New York City Code
 Jib No. 123 With 12 Ft. 6 in. Strut On
 Boom No. 82LR
 149,600 Lb. Counterweight
 360 Degree Rating

Meets
ANSI B30.5
Requirements

999 SERIES 1

40 Ft. JIB

Jib Oper. Rad. Feet	0 Degree Offset			10 Degree Offset			20 Degree Offset			Jib Oper. Rad. Feet
	Boom Ang. Deg.	Jib Point Elev. Feet	Jib Capacity Pounds	Boom Ang. Deg.	Jib Point Elev. Feet	Jib Capacity Pounds	Boom Ang. Deg.	Jib Point Elev. Feet	Jib Capacity Pounds	
210 Ft. BOOM										
50	80.4	255.6	30,000 *							50
55	79.2	254.7	30,000 *	80.7	253.7	30,000*				55
60	78.0	253.6	30,000 *	79.6	252.6	30,000*				60
65	76.9	252.4	30,000 *	78.4	251.4	30,000*	79.9	249.3	30,000*	65
70	75.7	251.1	30,000 *	77.2	250.2	30,000*	78.7	248.0	30,000*	70
75	74.5	249.7	30,000 *	76.0	248.8	30,000*	77.5	246.6	30,000*	75
80	73.3	248.2	30,000 *	74.8	247.3	30,000*	76.3	245.1	30,000*	80
85	72.1	246.6	30,000 *	73.6	245.6	30,000*	75.1	243.5	30,000*	85
90	70.9	244.9	30,000 *	72.4	243.9	30,000*	73.8	241.7	30,000*	90
100	68.5	241.0	30,000 *	70.0	240.0	30,000*	71.4	237.8	30,000*	100
110	66.0	236.7	29,900	67.5	235.7	30,000*	68.9	233.4	30,000*	110
120	63.5	231.8	25,900	64.9	230.8	26,600	66.3	228.5	27,200	120
130	60.9	226.4	22,600	62.3	225.3	23,200	63.6	223.0	23,700	130
140	58.2	220.4	19,800	59.6	219.3	20,300	60.9	216.8	20,800	140
150	55.5	213.7	17,400	56.9	212.5	17,800	58.2	210.0	18,300	150
160	52.6	206.2	15,300	54.0	205.0	15,700	55.3	202.4	16,100	160
170	49.7	198.0	13,400	51.1	196.7	13,800	52.2	194.0	14,100	170
180	46.6	188.8	11,800	47.9	187.5	12,100	49.1	184.6	12,400	180
190	43.3	178.6	10,300	44.7	177.2	10,600	45.7	174.1	10,900	190
200	39.8	167.0	9,000	41.1	165.5	9,300	42.2	162.3	9,500	200
210	36.1	153.9	7,900	37.4	152.3	8,100				210
220	31.9	138.7	6,800	33.2	136.9	7,000				220
230	27.2	120.6	5,800							230
240	21.6	97.8	4,900							240



Liftcrane Jib Capacities

New York City Code
Jib No. 123 With 12 Ft. 6 in. Strut On
Boom No. 82LR
149,600 Lb. Counterweight
360 Degree Rating

Meets
ANSI B30.5
Requirements

999 SERIES 1

40 Ft. JIB

Jib Oper. Rad. Feet	0 Degree Offset			10 Degree Offset			20 Degree Offset			Jib Oper. Rad. Feet
	Boom Ang. Deg.	Jib Point Elev. Feet	Jib Capacity Pounds	Boom Ang. Deg.	Jib Point Elev. Feet	Jib Capacity Pounds	Boom Ang. Deg.	Jib Point Elev. Feet	Jib Capacity Pounds	
220 Ft. BOOM										
50	80.7	265.8	30,000 *							50
55	79.6	264.9	30,000 *							55
60	78.5	263.8	30,000 *	80.0	262.9	30,000*				60
65	77.4	262.7	30,000 *	78.8	261.7	30,000*	80.3	259.6	30,000*	65
70	76.3	261.5	30,000 *	77.7	260.5	30,000*	79.1	258.4	30,000*	70
75	75.1	260.1	30,000 *	76.6	259.2	30,000*	78.0	257.0	30,000*	75
80	74.0	258.7	30,000 *	75.4	257.7	30,000*	76.8	255.6	30,000*	80
85	72.8	257.1	30,000 *	74.3	256.1	30,000*	75.7	254.0	30,000*	85
90	71.7	255.5	30,000 *	73.1	254.5	30,000*	74.5	252.3	30,000*	90
100	69.3	251.8	27,700	70.8	250.8	28,800	72.1	248.6	29,900	100
110	67.0	247.7	23,000	68.4	246.6	24,000	69.7	244.4	25,000	110
120	64.6	243.0	19,200	66.0	242.0	20,100	67.3	239.7	21,000	120
130	62.1	237.9	16,000	63.5	236.8	16,800	64.8	234.4	17,600	130
140	59.6	232.1	13,300	61.0	231.0	14,100	62.2	228.6	14,700	140
150	57.0	225.8	11,000	58.3	224.7	11,700	59.6	222.2	12,300	150
160	54.3	218.8	9,000	55.7	217.6	9,600	56.9	215.1	10,100	160
170	51.5	211.1	7,300	52.9	209.8	7,800	54.0	207.2	8,200	170
180	48.6	202.5	5,700	50.0	201.2	6,200	51.1	198.4	6,600	180
190	45.6	193.0	4,300	46.9	191.7	4,700	48.0	188.7	5,100	190
230 Ft. BOOM										
55	80.0	275.0	30,000 *							55
60	78.9	274.0	30,000 *	80.3	273.1	30,000*				60
65	77.9	273.0	30,000 *	79.3	272.0	30,000*	80.6	269.9	30,000*	65
70	76.8	271.8	30,000 *	78.2	270.8	30,000*	79.5	268.7	30,000*	70
75	75.7	270.5	30,000 *	77.1	269.5	30,000*	78.4	267.4	30,000*	75
80	74.6	269.1	30,000 *	76.0	268.1	30,000*	77.3	266.0	30,000*	80
85	73.5	267.6	30,000 *	74.9	266.6	30,000*	76.2	264.5	30,000*	85
90	72.4	266.0	30,000 *	73.8	265.0	30,000*	75.1	262.8	30,000*	90
100	70.1	262.5	27,100	71.5	261.5	28,300	72.8	259.3	29,500	100
110	67.9	258.6	22,500	69.2	257.5	23,500	70.5	255.3	24,500	110
120	65.6	254.1	18,700	66.9	253.1	19,600	68.2	250.8	20,500	120
130	63.2	249.2	15,500	64.6	248.1	16,300	65.8	245.8	17,100	130
140	60.8	243.7	12,800	62.1	242.6	13,500	63.4	240.2	14,200	140
150	58.3	237.7	10,500	59.7	236.6	11,200	60.9	234.1	11,800	150
160	55.8	231.1	8,500	57.1	229.9	9,100	58.3	227.4	9,600	160
170	53.2	223.8	6,700	54.5	222.6	7,300	55.6	220.0	7,700	170
180	50.5	215.8	5,100	51.8	214.5	5,600	52.9	211.8	6,100	180
190				48.9	205.6	4,200	50.0	202.7	4,600	190



Liftcrane Jib Capacities

New York City Code
Jib No. 123 With 12 Ft. 6 in. Strut On
Boom No. 82LR
149,600 Lb. Counterweight
360 Degree Rating

Meets
ANSI B30.5
Requirements

999 SERIES 1

40 Ft. JIB

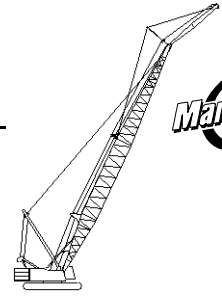
Jib Oper. Rad. Feet	0 Degree Offset			10 Degree Offset			20 Degree Offset			Jib Oper. Rad. Feet
	Boom Ang. Deg.	Jib Point Elev. Feet	Jib Capacity Pounds	Boom Ang. Deg.	Jib Point Elev. Feet	Jib Capacity Pounds	Boom Ang. Deg.	Jib Point Elev. Feet	Jib Capacity Pounds	
240 Ft. BOOM										
55	80.4	285.2	30,000 *							55
60	79.3	284.3	30,000 *	80.7	283.3	30,000*				60
65	78.3	283.2	30,000 *	79.7	282.2	30,000*	81.0	280.1	30,000*	65
70	77.2	282.1	30,000 *	78.6	281.1	30,000*	79.9	278.9	30,000*	70
75	76.2	280.8	30,000 *	77.6	279.8	30,000*	78.9	277.7	30,000*	75
80	75.1	279.5	30,000 *	76.5	278.5	30,000*	77.8	276.3	30,000*	80
85	74.1	278.1	30,000 *	75.4	277.1	30,000*	76.7	274.9	30,000*	85
90	73.0	276.5	30,000 *	74.4	275.5	30,000*	75.7	273.3	30,000*	90
100	70.9	273.2	26,400	72.2	272.1	27,700	73.5	269.9	28,900	100
110	68.7	269.4	21,800	70.0	268.3	22,900	71.3	266.1	24,000	110
120	66.5	265.1	17,900	67.8	264.1	18,900	69.0	261.8	19,900	120
130	64.2	260.4	14,800	65.5	259.3	15,600	66.8	257.0	16,500	130
140	61.9	255.2	12,100	63.2	254.1	12,900	64.4	251.7	13,600	140
150	59.6	249.5	9,700	60.9	248.3	10,500	62.1	245.9	11,100	150
160	57.2	243.2	7,700	58.5	242.0	8,400	59.6	239.5	9,000	160
170	54.7	236.3	6,000	56.0	235.1	6,500	57.1	232.5	7,100	170
180	52.2	228.7	4,400	53.4	227.4	4,900	54.5	224.8	5,400	180
250 Ft. BOOM										
55	80.7	295.4	30,000 *							55
60	79.7	294.4	30,000 *	81.0	293.5	30,000*				60
65	78.7	293.4	30,000 *	80.0	292.4	30,000*				65
70	77.7	292.3	30,000 *	79.0	291.3	30,000*	80.3	289.2	30,000*	70
75	76.7	291.1	30,000 *	78.0	290.2	30,000*	79.3	288.0	30,000*	75
80	75.7	289.9	30,000 *	77.0	288.9	30,000*	78.2	286.7	30,000*	80
85	74.6	288.5	30,000 *	76.0	287.5	30,000*	77.2	285.3	30,000*	85
90	73.6	287.0	30,000 *	74.9	286.0	30,000*	76.2	283.8	30,000*	90
100	71.6	283.8	25,900	72.9	282.7	27,200	74.1	280.5	28,500	100
110	69.5	280.1	21,200	70.8	279.1	22,400	72.0	276.8	23,500	110
120	67.3	276.0	17,400	68.6	275.0	18,400	69.8	272.7	19,400	120
130	65.2	271.5	14,200	66.5	270.4	15,100	67.6	268.1	16,000	130
140	63.0	266.5	11,500	64.2	265.4	12,300	65.4	263.1	13,100	140
150	60.7	261.1	9,100	62.0	259.9	9,900	63.1	257.5	10,600	150
160	58.5	255.1	7,100	59.7	253.9	7,800	60.8	251.4	8,400	160
170	56.1	248.5	5,400	57.3	247.3	6,000	58.4	244.8	6,600	170
180				54.9	240.1	4,400	56.0	237.5	4,900	180



Liftcrane Jib Capacities

New York City Code
 Jib No. 123 With 12 Ft. 6 in. Strut On
 Boom No. 82LR
 149,600 Lb. Counterweight
 360 Degree Rating

Meets
 ANSI B30.5
 Requirements



999 SERIES 1

40 Ft. JIB

Jib Oper. Rad. Feet	0 Degree Offset			10 Degree Offset			20 Degree Offset			Jib Oper. Rad. Feet
	Boom Ang. Deg.	Jib Point Elev. Feet	Jib Capacity Pounds	Boom Ang. Deg.	Jib Point Elev. Feet	Jib Capacity Pounds	Boom Ang. Deg.	Jib Point Elev. Feet	Jib Capacity Pounds	
260 Ft. BOOM										
55	81.0	305.5	30,000 *							55
60	80.0	304.6	30,000 *							60
65	79.1	303.6	30,000 *	80.4	302.7	30,000*				65
70	78.1	302.6	30,000 *	79.4	301.6	30,000*	80.6	299.4	30,000*	70
75	77.1	301.4	30,000 *	78.4	300.4	30,000*	79.6	298.3	30,000*	75
80	76.2	300.2	30,000 *	77.4	299.2	30,000*	78.6	297.0	30,000*	80
85	75.2	298.9	30,000 *	76.4	297.9	30,000*	77.6	295.7	30,000*	85
90	74.2	297.4	30,000 *	75.4	296.4	30,000*	76.7	294.2	30,000*	90
100	72.2	294.3	25,300	73.4	293.3	26,700	74.6	291.1	28,000	100
110	70.2	290.8	20,600	71.4	289.8	21,800	72.6	287.5	23,000	110
120	68.1	286.9	16,800	69.4	285.8	17,900	70.5	283.6	18,900	120
130	66.1	282.5	13,600	67.3	281.5	14,600	68.4	279.2	15,500	130
140	64.0	277.8	10,900	65.2	276.7	11,800	66.3	274.3	12,600	140
150	61.8	272.5	8,600	63.0	271.4	9,400	64.1	269.0	10,100	150
160	59.6	266.8	6,500	60.8	265.7	7,300	61.9	263.2	7,900	160
170	57.4	260.5	4,800	58.6	259.4	5,400	59.6	256.8	6,000	170
180							57.3	249.9	4,300	180



Liftcrane Jib Capacities

New York City Code
Jib No. 123 With 12 Ft. 6 in. Strut On
Boom No. 82LR
149,600 Lb. Counterweight
360 Degree Rating

Meets
ANSI B30.5
Requirements

999 SERIES 1

50 Ft. JIB

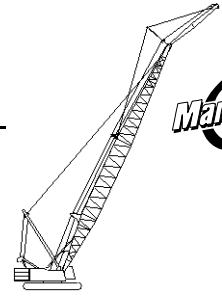
Jib Oper. Rad. Feet	0 Degree Offset			10 Degree Offset			20 Degree Offset			Jib Oper. Rad. Feet
	Boom Ang. Deg.	Jib Point Elev. Feet	Jib Capacity Pounds	Boom Ang. Deg.	Jib Point Elev. Feet	Jib Capacity Pounds	Boom Ang. Deg.	Jib Point Elev. Feet	Jib Capacity Pounds	
120 Ft. BOOM										
40	79.6	176.3	20,000*							40
45	77.9	175.2	20,000*	80.7	174.2	20,000*				45
50	76.2	173.9	20,000*	79.0	173.0	20,000*				50
55	74.4	172.5	20,000*	77.2	171.6	20,000*	80.0	169.4	20,000*	55
60	72.7	170.9	20,000*	75.5	170.0	20,000*	78.2	167.8	20,000*	60
65	70.9	169.2	20,000*	73.7	168.2	20,000*	76.4	166.0	20,000*	65
70	69.1	167.3	20,000*	71.9	166.3	20,000*	74.6	164.0	20,000*	70
75	67.3	165.2	20,000*	70.1	164.2	20,000*	72.7	161.9	20,000*	75
80	65.5	162.9	20,000*	68.2	161.8	20,000*	70.9	159.5	20,000*	80
85	63.6	160.4	20,000*	66.3	159.3	20,000*	68.9	157.0	20,000*	85
90	61.7	157.7	20,000*	64.4	156.6	20,000*	67.0	154.2	20,000*	90
100	57.8	151.6	20,000*	60.5	150.5	20,000*	63.0	148.0	20,000*	100
110	53.7	144.5	20,000*	56.4	143.3	20,000*	58.8	140.7	20,000*	110
120	49.4	136.3	20,000*	52.0	135.0	20,000*	54.3	132.2	19,700*	120
130	44.7	126.6	20,000*	47.3	125.3	20,000*	49.5	122.2	18,700*	130
140	39.6	115.2	20,000*	42.2	113.7	20,000*	44.2	110.2	17,800*	140
150	33.9	101.3	20,000*	36.3	99.5	19,400*				150
160	27.1	83.6	18,900	29.4	81.4	18,500*				160
130 Ft. BOOM										
40	80.2	186.5	20,000*							40
45	78.6	185.4	20,000*							45
50	76.9	184.3	20,000*	79.6	183.3	20,000*				50
55	75.3	182.9	20,000*	78.0	182.0	20,000*	80.6	179.7	20,000*	55
60	73.7	181.5	20,000*	76.3	180.5	20,000*	78.9	178.2	20,000*	60
65	72.0	179.8	20,000*	74.6	178.8	20,000*	77.2	176.5	20,000*	65
70	70.3	178.0	20,000*	72.9	177.0	20,000*	75.5	174.7	20,000*	70
75	68.6	176.0	20,000*	71.2	175.0	20,000*	73.8	172.7	20,000*	75
80	66.9	173.9	20,000*	69.5	172.9	20,000*	72.0	170.5	20,000*	80
85	65.2	171.6	20,000*	67.8	170.5	20,000*	70.2	168.1	20,000*	85
90	63.4	169.1	20,000*	66.0	168.0	20,000*	68.4	165.6	20,000*	90
100	59.8	163.4	20,000*	62.3	162.3	20,000*	64.7	159.8	20,000*	100
110	56.0	156.9	20,000*	58.5	155.7	20,000*	60.9	153.1	20,000*	110
120	52.1	149.4	20,000*	54.6	148.2	20,000*	56.8	145.4	20,000*	120
130	47.9	140.7	20,000*	50.3	139.4	20,000*	52.5	136.4	19,300*	130
140	43.4	130.5	20,000*	45.8	129.1	20,000*	47.8	125.9	18,400*	140
150	38.5	118.6	20,000*	40.8	117.0	20,000*	42.7	113.4	17,600*	150
160	32.9	104.2	18,600	35.2	102.4	18,900				160
170	26.3	85.8	16,800							170



Liftcrane Jib Capacities

New York City Code
 Jib No. 123 With 12 Ft. 6 in. Strut On
 Boom No. 82LR
 149,600 Lb. Counterweight
 360 Degree Rating

Meets
 ANSI B30.5
 Requirements



999 SERIES 1

50 Ft. JIB

Jib Oper. Rad. Feet	0 Degree Offset			10 Degree Offset			20 Degree Offset			Jib Oper. Rad. Feet
	Boom Ang. Deg.	Jib Point Elev. Feet	Jib Capacity Pounds	Boom Ang. Deg.	Jib Point Elev. Feet	Jib Capacity Pounds	Boom Ang. Deg.	Jib Point Elev. Feet	Jib Capacity Pounds	
140 Ft. BOOM										
40	80.7	196.6	20,000 *							40
45	79.2	195.7	20,000 *							45
50	77.6	194.6	20,000 *	80.2	193.6	20,000*				50
55	76.1	193.3	20,000 *	78.6	192.3	20,000*				55
60	74.5	191.9	20,000 *	77.1	190.9	20,000*	79.5	188.6	20,000*	60
65	73.0	190.4	20,000 *	75.5	189.3	20,000*	77.9	187.0	20,000*	65
70	71.4	188.7	20,000 *	73.9	187.6	20,000*	76.3	185.3	20,000*	70
75	69.8	186.8	20,000 *	72.3	185.8	20,000*	74.7	183.4	20,000*	75
80	68.2	184.8	20,000 *	70.7	183.7	20,000*	73.0	181.4	20,000*	80
85	66.6	182.6	20,000 *	69.0	181.5	20,000*	71.4	179.1	20,000*	85
90	64.9	180.3	20,000 *	67.4	179.2	20,000*	69.7	176.7	20,000*	90
100	61.5	175.0	20,000 *	64.0	173.9	20,000*	66.2	171.4	20,000*	100
110	58.0	168.9	20,000 *	60.4	167.8	20,000*	62.7	165.2	20,000*	110
120	54.4	162.0	20,000 *	56.8	160.8	20,000*	58.9	158.1	20,000*	120
130	50.6	154.1	20,000 *	52.9	152.8	20,000*	55.0	149.9	19,900*	130
140	46.5	144.9	20,000 *	48.8	143.6	20,000*	50.8	140.5	18,900*	140
150	42.2	134.4	20,000 *	44.4	132.9	20,000*	46.3	129.5	18,100*	150
160	37.4	121.9	18,300	39.6	120.3	18,600	41.3	116.6	17,500*	160
170	32.0	107.0	16,500	34.1	105.1	16,700				170
180	25.6	88.0	14,800							180

Manitowoc Cranes, Inc.

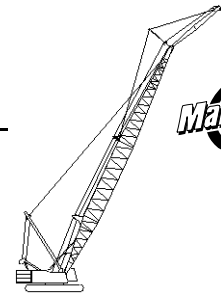
Manitowoc, Wisconsin 54220 U.S.A.



Liftcrane Jib Capacities

New York City Code
 Jib No. 123 With 12 Ft. 6 in. Strut On
 Boom No. 82LR
 149,600 Lb. Counterweight
 360 Degree Rating

Meets
 ANSI B30.5
 Requirements



999 SERIES 1

50 Ft. JIB

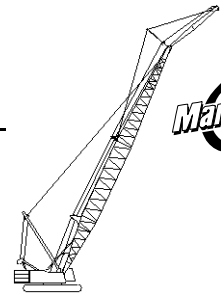
Jib Oper. Rad. Feet	0 Degree Offset			10 Degree Offset			20 Degree Offset			Jib Oper. Rad. Feet
	Boom Ang. Deg.	Jib Point Elev. Feet	Jib Capacity Pounds	Boom Ang. Deg.	Jib Point Elev. Feet	Jib Capacity Pounds	Boom Ang. Deg.	Jib Point Elev. Feet	Jib Capacity Pounds	
150 Ft. BOOM										
45	79.7	205.9	20,000*							45
50	78.3	204.8	20,000*	80.7	203.8	20,000*				50
55	76.8	203.6	20,000*	79.2	202.6	20,000*				55
60	75.3	202.3	20,000*	77.7	201.3	20,000*	80.1	199.0	20,000*	60
65	73.8	200.8	20,000*	76.2	199.8	20,000*	78.6	197.5	20,000*	65
70	72.4	199.2	20,000*	74.7	198.2	20,000*	77.0	195.9	20,000*	70
75	70.8	197.5	20,000*	73.2	196.4	20,000*	75.5	194.1	20,000*	75
80	69.3	195.6	20,000*	71.7	194.5	20,000*	74.0	192.1	20,000*	80
85	67.8	193.5	20,000*	70.1	192.5	20,000*	72.4	190.0	20,000*	85
90	66.2	191.3	20,000*	68.6	190.2	20,000*	70.8	187.8	20,000*	90
100	63.1	186.4	20,000*	65.4	185.3	20,000*	67.6	182.8	20,000*	100
110	59.8	180.7	20,000*	62.1	179.6	20,000*	64.2	177.0	20,000*	110
120	56.4	174.3	20,000*	58.7	173.1	20,000*	60.8	170.4	20,000*	120
130	52.9	167.0	20,000*	55.1	165.7	20,000*	57.2	162.9	20,000*	130
140	49.2	158.6	20,000*	51.4	157.3	20,000*	53.4	154.3	19,500*	140
150	45.3	149.1	20,000*	47.4	147.7	20,000*	49.3	144.5	18,700*	150
160	41.0	138.1	18,000	43.2	136.5	18,300	44.9	133.0	17,900*	160
170	36.4	125.2	16,200	38.5	123.5	16,400	40.1	119.6	16,700	170
180	31.2	109.7	14,500	33.1	107.7	14,800				180
190	24.9	90.2	13,100							190



Liftcrane Jib Capacities

New York City Code
 Jib No. 123 With 12 Ft. 6 in. Strut On
 Boom No. 82LR
 149,600 Lb. Counterweight
 360 Degree Rating

Meets
 ANSI B30.5
 Requirements



999 SERIES 1

50 Ft. JIB

Jib Oper. Rad. Feet	0 Degree Offset			10 Degree Offset			20 Degree Offset			Jib Oper. Rad. Feet
	Boom Ang. Deg.	Jib Point Elev. Feet	Jib Capacity Pounds	Boom Ang. Deg.	Jib Point Elev. Feet	Jib Capacity Pounds	Boom Ang. Deg.	Jib Point Elev. Feet	Jib Capacity Pounds	
160 Ft. BOOM										
45	80.2	216.1	20,000 *							45
50	78.8	215.0	20,000 *							50
55	77.4	213.9	20,000 *	79.7	212.9	20,000*				55
60	76.0	212.7	20,000 *	78.3	211.6	20,000*	80.6	209.3	20,000*	60
65	74.6	211.3	20,000 *	76.9	210.2	20,000*	79.1	207.9	20,000*	65
70	73.2	209.8	20,000 *	75.5	208.7	20,000*	77.7	206.3	20,000*	70
75	71.8	208.1	20,000 *	74.0	207.0	20,000*	76.2	204.6	20,000*	75
80	70.4	206.3	20,000 *	72.6	205.2	20,000*	74.8	202.8	20,000*	80
85	68.9	204.4	20,000 *	71.1	203.3	20,000*	73.3	200.8	20,000*	85
90	67.4	202.3	20,000 *	69.7	201.2	20,000*	71.8	198.7	20,000*	90
100	64.4	197.6	20,000 *	66.7	196.5	20,000*	68.8	194.0	20,000*	100
110	61.4	192.3	20,000 *	63.6	191.2	20,000*	65.6	188.6	20,000*	110
120	58.2	186.3	20,000 *	60.4	185.1	20,000*	62.4	182.4	20,000*	120
130	54.9	179.5	20,000 *	57.1	178.2	20,000*	59.0	175.4	20,000*	130
140	51.5	171.8	20,000 *	53.6	170.5	20,000*	55.5	167.5	20,000*	140
150	47.9	163.0	19,600	50.0	161.7	20,000*	51.8	158.6	19,200*	150
160	44.1	153.1	17,500	46.2	151.6	17,900	47.9	148.3	18,200	160
170	40.0	141.7	15,700	42.0	140.1	16,000	43.6	136.5	16,200	170
180	35.5	128.3	14,000	37.4	126.6	14,300				180
190	30.4	112.4	12,600	32.2	110.3	12,800				190
200	24.3	92.3	11,200							200



Liftcrane Jib Capacities

New York City Code
 Jib No. 123 With 12 Ft. 6 in. Strut On
 Boom No. 82LR
 149,600 Lb. Counterweight
 360 Degree Rating

Meets
ANSI B30.5
Requirements

999 SERIES 1

50 Ft. JIB

Jib Oper. Rad. Feet	0 Degree Offset			10 Degree Offset			20 Degree Offset			Jib Oper. Rad. Feet
	Boom Ang. Deg.	Jib Point Elev. Feet	Jib Capacity Pounds	Boom Ang. Deg.	Jib Point Elev. Feet	Jib Capacity Pounds	Boom Ang. Deg.	Jib Point Elev. Feet	Jib Capacity Pounds	
170 Ft. BOOM										
45	80.7	226.2	20,000 *							45
50	79.3	225.3	20,000 *							50
55	78.0	224.2	20,000 *	80.2	223.1	20,000*				55
60	76.7	223.0	20,000 *	78.9	221.9	20,000*	81.0	219.6	20,000*	60
65	75.3	221.7	20,000 *	77.5	220.6	20,000*	79.6	218.2	20,000*	65
70	74.0	220.2	20,000 *	76.2	219.2	20,000*	78.3	216.8	20,000*	70
75	72.6	218.6	20,000 *	74.8	217.6	20,000*	76.9	215.2	20,000*	75
80	71.3	216.9	20,000 *	73.4	215.9	20,000*	75.5	213.4	20,000*	80
85	69.9	215.1	20,000 *	72.0	214.0	20,000*	74.1	211.6	20,000*	85
90	68.5	213.1	20,000 *	70.6	212.0	20,000*	72.7	209.5	20,000*	90
100	65.7	208.7	20,000 *	67.8	207.6	20,000*	69.8	205.1	20,000*	100
110	62.8	203.7	20,000 *	64.9	202.6	20,000*	66.9	200.0	20,000*	110
120	59.8	198.1	20,000 *	61.9	196.9	20,000*	63.8	194.2	20,000*	120
130	56.7	191.7	20,000 *	58.8	190.5	20,000*	60.7	187.7	20,000*	130
140	53.6	184.5	20,000 *	55.6	183.2	20,000*	57.4	180.3	20,000*	140
150	50.2	176.4	19,300	52.3	175.1	19,700	54.0	172.1	19,600*	150
160	46.7	167.3	17,200	48.7	165.9	17,600	50.4	162.7	17,900	160
170	43.0	157.0	15,300	45.0	155.5	15,700	46.6	152.0	16,000	170
180	39.0	145.2	13,700	40.9	143.5	14,000	42.4	139.8	14,200	180
190	34.6	131.4	12,200	36.5	129.6	12,500				190
200	29.6	115.0	10,900	31.4	112.9	11,100				200
210	23.7	94.3	9,700							210



Liftcrane Jib Capacities

New York City Code
Jib No. 123 With 12 Ft. 6 in. Strut On
Boom No. 82LR
149,600 Lb. Counterweight
360 Degree Rating

Meets
ANSI B30.5
Requirements

999 SERIES 1

50 Ft. JIB

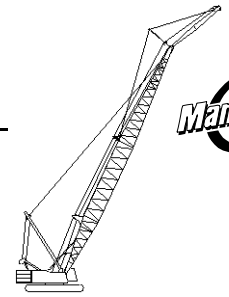
Jib Oper. Rad. Feet	0 Degree Offset			10 Degree Offset			20 Degree Offset			Jib Oper. Rad. Feet
	Boom Ang. Deg.	Jib Point Elev. Feet	Jib Capacity Pounds	Boom Ang. Deg.	Jib Point Elev. Feet	Jib Capacity Pounds	Boom Ang. Deg.	Jib Point Elev. Feet	Jib Capacity Pounds	
180 Ft. BOOM										
50	79.8	235.5	20,000 *							50
55	78.5	234.4	20,000 *	80.6	233.4	20,000*				55
60	77.3	233.3	20,000 *	79.4	232.2	20,000*				60
65	76.0	232.0	20,000 *	78.1	231.0	20,000*	80.1	228.6	20,000*	65
70	74.7	230.6	20,000 *	76.8	229.6	20,000*	78.8	227.2	20,000*	70
75	73.4	229.1	20,000 *	75.5	228.1	20,000*	77.5	225.6	20,000*	75
80	72.1	227.5	20,000 *	74.2	226.4	20,000*	76.2	224.0	20,000*	80
85	70.8	225.8	20,000 *	72.9	224.7	20,000*	74.8	222.2	20,000*	85
90	69.5	223.9	20,000 *	71.5	222.8	20,000*	73.5	220.3	20,000*	90
100	66.8	219.7	20,000 *	68.8	218.6	20,000*	70.8	216.1	20,000*	100
110	64.1	215.0	20,000 *	66.1	213.8	20,000*	68.0	211.2	20,000*	110
120	61.3	209.6	20,000 *	63.3	208.5	20,000*	65.1	205.8	20,000*	120
130	58.4	203.6	20,000 *	60.4	202.4	20,000*	62.2	199.7	20,000*	130
140	55.4	196.9	20,000 *	57.4	195.7	20,000*	59.1	192.8	20,000*	140
150	52.3	189.4	18,900	54.2	188.1	19,400	56.0	185.1	19,800	150
160	49.1	181.0	16,800	51.0	179.6	17,200	52.6	176.5	17,600	160
170	45.7	171.5	14,900	47.5	170.1	15,300	49.1	166.7	15,700	170
180	42.0	160.8	13,300	43.9	159.3	13,700	45.4	155.7	13,900	180
190	38.1	148.6	11,900	39.9	146.9	12,100	41.3	143.0	12,400	190
200	33.8	134.4	10,500	35.6	132.5	10,800				200
210	29.0	117.5	9,400	30.6	115.3	9,600				210
220	23.2	96.3	8,300							220



Liftcrane Jib Capacities

New York City Code
 Jib No. 123 With 12 Ft. 6 in. Strut On
 Boom No. 82LR
 149,600 Lb. Counterweight
 360 Degree Rating

Meets
 ANSI B30.5
 Requirements



999 SERIES 1

50 Ft. JIB

Jib Oper. Rad. Feet	0 Degree Offset			10 Degree Offset			20 Degree Offset			Jib Oper. Rad. Feet
	Boom Ang. Deg.	Jib Point Elev. Feet	Jib Capacity Pounds	Boom Ang. Deg.	Jib Point Elev. Feet	Jib Capacity Pounds	Boom Ang. Deg.	Jib Point Elev. Feet	Jib Capacity Pounds	
190 Ft. BOOM										
50	80.2	245.6	20,000 *							50
55	79.0	244.6	20,000 *	81.0	243.6	20,000*				55
60	77.8	243.6	20,000 *	79.8	242.5	20,000*				60
65	76.6	242.4	20,000 *	78.6	241.3	20,000*	80.5	238.9	20,000*	65
70	75.4	241.0	20,000 *	77.3	240.0	20,000*	79.3	237.5	20,000*	70
75	74.1	239.6	20,000 *	76.1	238.5	20,000*	78.0	236.1	20,000*	75
80	72.9	238.0	20,000 *	74.9	237.0	20,000*	76.8	234.5	20,000*	80
85	71.6	236.4	20,000 *	73.6	235.3	20,000*	75.5	232.8	20,000*	85
90	70.4	234.6	20,000 *	72.3	233.5	20,000*	74.2	231.0	20,000*	90
100	67.8	230.6	20,000 *	69.8	229.5	20,000*	71.6	226.9	20,000*	100
110	65.2	226.1	20,000 *	67.2	225.0	20,000*	69.0	222.4	20,000*	110
120	62.6	221.0	20,000 *	64.5	219.9	20,000*	66.3	217.2	20,000*	120
130	59.8	215.4	20,000 *	61.7	214.2	20,000*	63.5	211.4	20,000*	130
140	57.0	209.1	20,000 *	58.9	207.8	20,000*	60.6	205.0	20,000*	140
150	54.1	202.0	18,500	56.0	200.7	19,100	57.7	197.8	19,500	150
160	51.1	194.2	16,400	53.0	192.8	16,900	54.6	189.8	17,300	160
170	48.0	185.4	14,600	49.8	184.0	15,000	51.4	180.8	15,400	170
180	44.6	175.6	13,000	46.4	174.1	13,300	47.9	170.7	13,600	180
190	41.1	164.5	11,500	42.9	162.9	11,800	44.3	159.3	12,100	190
200	37.3	151.9	10,200	39.0	150.2	10,500	40.3	146.2	10,700	200
210	33.1	137.3	9,000	34.7	135.4	9,200				210
220	28.3	120.0	7,900	29.9	117.7	8,100				220
230	22.7	98.3	6,900							230



Liftcrane Jib Capacities

New York City Code
Jib No. 123 With 12 Ft. 6 in. Strut On
Boom No. 82LR
149,600 Lb. Counterweight
360 Degree Rating

Meets
ANSI B30.5
Requirements

999 SERIES 1

50 Ft. JIB

Jib Oper. Rad. Feet	0 Degree Offset			10 Degree Offset			20 Degree Offset			Jib Oper. Rad. Feet
	Boom Ang. Deg.	Jib Point Elev. Feet	Jib Capacity Pounds	Boom Ang. Deg.	Jib Point Elev. Feet	Jib Capacity Pounds	Boom Ang. Deg.	Jib Point Elev. Feet	Jib Capacity Pounds	
200 Ft. BOOM										
50	80.6	255.8	20,000 *							50
55	79.5	254.9	20,000 *							55
60	78.3	253.8	20,000 *	80.2	252.7	20,000*				60
65	77.1	252.7	20,000 *	79.0	251.6	20,000*	80.9	249.1	20,000*	65
70	76.0	251.4	20,000 *	77.9	250.3	20,000*	79.7	247.9	20,000*	70
75	74.8	250.0	20,000 *	76.7	248.9	20,000*	78.5	246.5	20,000*	75
80	73.6	248.5	20,000 *	75.5	247.4	20,000*	77.3	245.0	20,000*	80
85	72.4	246.9	20,000 *	74.3	245.8	20,000*	76.1	243.3	20,000*	85
90	71.2	245.2	20,000 *	73.1	244.1	20,000*	74.9	241.6	20,000*	90
100	68.8	241.4	20,000 *	70.6	240.3	20,000*	72.4	237.8	20,000*	100
110	66.3	237.1	20,000 *	68.1	236.0	20,000*	69.9	233.4	20,000*	110
120	63.7	232.3	20,000 *	65.6	231.2	20,000*	67.3	228.5	20,000*	120
130	61.2	227.0	20,000 *	63.0	225.7	20,000*	64.7	223.0	20,000*	130
140	58.5	221.0	20,000 *	60.3	219.7	20,000*	62.0	216.9	20,000*	140
150	55.8	214.3	18,000	57.6	213.1	18,600	59.2	210.2	19,100	150
160	52.9	207.0	15,900	54.7	205.6	16,400	56.3	202.6	16,900	160
170	50.0	198.8	14,100	51.8	197.4	14,500	53.3	194.3	14,900	170
180	46.9	189.7	12,400	48.7	188.3	12,800	50.1	185.0	13,200	180
190	43.7	179.6	11,000	45.4	178.0	11,300	46.8	174.5	11,600	190
200	40.2	168.2	9,700	41.9	166.5	10,000	43.2	162.7	10,200	200
210	36.5	155.2	8,500	38.1	153.4	8,800	39.4	149.3	9,000	210
220	32.4	140.2	7,400	34.0	138.2	7,600				220
230	27.7	122.4	6,400	29.2	120.1	6,600				230
240	22.2	100.2	5,500							240



Liftcrane Jib Capacities

New York City Code
Jib No. 123 With 12 Ft. 6 in. Strut On
Boom No. 82LR
149,600 Lb. Counterweight
360 Degree Rating

Meets
ANSI B30.5
Requirements

999 SERIES 1

50 Ft. JIB

Jib Oper. Rad. Feet	0 Degree Offset			10 Degree Offset			20 Degree Offset			Jib Oper. Rad. Feet
	Boom Ang. Deg.	Jib Point Elev. Feet	Jib Capacity Pounds	Boom Ang. Deg.	Jib Point Elev. Feet	Jib Capacity Pounds	Boom Ang. Deg.	Jib Point Elev. Feet	Jib Capacity Pounds	
210 Ft. BOOM										
50	81.0	265.9	20,000 *							50
55	79.9	265.0	20,000 *							55
60	78.8	264.0	20,000 *	80.6	263.0	20,000*				60
65	77.6	262.9	20,000 *	79.5	261.8	20,000*				65
70	76.5	261.7	20,000 *	78.3	260.6	20,000*	80.1	258.2	20,000*	70
75	75.4	260.4	20,000 *	77.2	259.3	20,000*	79.0	256.8	20,000*	75
80	74.2	259.0	20,000 *	76.1	257.9	20,000*	77.8	255.4	20,000*	80
85	73.1	257.4	20,000 *	74.9	256.3	20,000*	76.7	253.8	20,000*	85
90	71.9	255.8	20,000 *	73.8	254.7	20,000*	75.5	252.2	20,000*	90
100	69.6	252.2	20,000 *	71.4	251.0	20,000*	73.1	248.5	20,000*	100
110	67.2	248.1	20,000 *	69.0	246.9	20,000*	70.7	244.3	20,000*	110
120	64.8	243.5	20,000 *	66.6	242.3	20,000*	68.3	239.7	20,000*	120
130	62.4	238.4	16,900	64.1	237.2	17,900	65.8	234.5	18,800	130
140	59.8	232.7	14,200	61.6	231.5	15,100	63.2	228.7	15,900	140
150	57.3	226.4	11,900	59.0	225.2	12,700	60.6	222.3	13,400	150
160	54.6	219.5	9,900	56.3	218.2	10,600	57.9	215.2	11,200	160
170	51.8	211.8	8,100	53.5	210.5	8,800	55.0	207.4	9,300	170
180	49.0	203.3	6,600	50.6	201.9	7,100	52.1	198.7	7,600	180
190	46.0	193.9	5,200	47.6	192.4	5,700	49.0	189.1	6,100	190
200				44.4	181.9	4,400	45.8	178.3	4,700	200
220 Ft. BOOM										
55	80.2	275.2	20,000 *							55
60	79.2	274.2	20,000 *	81.0	273.2	20,000*				60
65	78.1	273.2	20,000 *	79.9	272.1	20,000*				65
70	77.0	272.0	20,000 *	78.8	270.9	20,000*	80.5	268.4	20,000*	70
75	75.9	270.8	20,000 *	77.7	269.6	20,000*	79.4	267.2	20,000*	75
80	74.8	269.4	20,000 *	76.6	268.3	20,000*	78.3	265.8	20,000*	80
85	73.7	267.9	20,000 *	75.5	266.8	20,000*	77.2	264.3	20,000*	85
90	72.6	266.3	20,000 *	74.4	265.2	20,000*	76.1	262.7	20,000*	90
100	70.4	262.9	20,000 *	72.1	261.7	20,000*	73.8	259.2	20,000*	100
110	68.1	258.9	20,000 *	69.9	257.8	20,000*	71.5	255.2	20,000*	110
120	65.8	254.6	19,600	67.5	253.4	20,000*	69.2	250.7	20,000*	120
130	63.5	249.7	16,400	65.2	248.5	17,400	66.8	245.8	18,300	130
140	61.1	244.3	13,700	62.8	243.0	14,600	64.3	240.3	15,400	140
150	58.6	238.3	11,300	60.3	237.0	12,200	61.8	234.2	12,900	150
160	56.1	231.7	9,300	57.8	230.4	10,100	59.3	227.5	10,700	160
170	53.5	224.5	7,600	55.1	223.2	8,200	56.6	220.1	8,800	170
180	50.8	216.5	6,000	52.4	215.2	6,600	53.9	212.0	7,100	180
190	48.0	207.8	4,600	49.6	206.3	5,100	51.0	203.0	5,600	190
200							48.0	193.1	4,200	200



Liftcrane Jib Capacities

New York City Code
Jib No. 123 With 12 Ft. 6 in. Strut On
Boom No. 82LR
149,600 Lb. Counterweight
360 Degree Rating

Meets
ANSI B30.5
Requirements

999 SERIES 1

50 Ft. JIB

Jib Oper. Rad. Feet	0 Degree Offset			10 Degree Offset			20 Degree Offset			Jib Oper. Rad. Feet
	Boom Ang. Deg.	Jib Point Elev. Feet	Jib Capacity Pounds	Boom Ang. Deg.	Jib Point Elev. Feet	Jib Capacity Pounds	Boom Ang. Deg.	Jib Point Elev. Feet	Jib Capacity Pounds	
230 Ft. BOOM										
55	80.6	285.4	20,000 *							55
60	79.6	284.4	20,000 *							60
65	78.5	283.4	20,000 *	80.2	282.3	20,000*				65
70	77.5	282.3	20,000 *	79.2	281.2	20,000*	80.9	278.7	20,000*	70
75	76.4	281.1	20,000 *	78.1	280.0	20,000*	79.8	277.5	20,000*	75
80	75.4	279.8	20,000 *	77.1	278.7	20,000*	78.7	276.1	20,000*	80
85	74.3	278.4	20,000 *	76.0	277.2	20,000*	77.7	274.7	20,000*	85
90	73.3	276.8	20,000 *	75.0	275.7	20,000*	76.6	273.2	20,000*	90
100	71.1	273.5	20,000 *	72.8	272.4	20,000*	74.4	269.8	20,000*	100
110	68.9	269.7	20,000 *	70.6	268.6	20,000*	72.2	266.0	20,000*	110
120	66.7	265.5	19,000	68.4	264.4	20,000*	70.0	261.7	20,000*	120
130	64.5	260.9	15,800	66.1	259.7	16,900	67.7	257.0	17,900	130
140	62.2	255.7	13,100	63.8	254.5	14,100	65.4	251.7	15,000	140
150	59.9	250.0	10,800	61.5	248.8	11,700	63.0	245.9	12,500	150
160	57.5	243.8	8,800	59.1	242.5	9,600	60.5	239.6	10,300	160
170	55.0	236.9	7,000	56.6	235.6	7,700	58.0	232.6	8,400	170
180	52.4	229.4	5,400	54.0	228.0	6,100	55.4	224.9	6,700	180
190	49.8	221.2	4,000	51.4	219.7	4,600	52.7	216.5	5,100	190
240 Ft. BOOM										
55	80.9	295.5	20,000 *							55
60	79.9	294.6	20,000 *							60
65	78.9	293.6	20,000 *	80.6	292.5	20,000*				65
70	77.9	292.6	20,000 *	79.6	291.4	20,000*				70
75	76.9	291.4	20,000 *	78.6	290.3	20,000*	80.2	287.8	20,000*	75
80	75.9	290.1	20,000 *	77.5	289.0	20,000*	79.1	286.5	20,000*	80
85	74.9	288.8	20,000 *	76.5	287.6	20,000*	78.1	285.1	20,000*	85
90	73.9	287.3	20,000 *	75.5	286.2	20,000*	77.1	283.6	20,000*	90
100	71.8	284.1	20,000 *	73.4	282.9	20,000*	75.0	280.4	20,000*	100
110	69.7	280.5	20,000 *	71.3	279.3	20,000*	72.9	276.7	20,000*	110
120	67.6	276.4	18,300	69.2	275.3	19,600	70.7	272.6	20,000*	120
130	65.4	272.0	15,100	67.0	270.8	16,200	68.5	268.1	17,300	130
140	63.2	267.0	12,400	64.8	265.8	13,400	66.3	263.0	14,400	140
150	61.0	261.6	10,100	62.6	260.3	11,000	64.0	257.5	11,800	150
160	58.7	255.6	8,000	60.3	254.4	8,900	61.7	251.5	9,600	160
170	56.4	249.1	6,300	57.9	247.8	7,000	59.3	244.9	7,700	170
180	54.0	242.0	4,700	55.5	240.7	5,400	56.9	237.6	6,000	180
190							54.3	229.7	4,500	190



Liftcrane Jib Capacities

New York City Code
 Jib No. 123 With 12 Ft. 6 in. Strut On
 Boom No. 82LR
 149,600 Lb. Counterweight
 360 Degree Rating

Meets
ANSI B30.5
Requirements

999 SERIES 1

50 Ft. JIB

Jib Oper. Rad. Feet	0 Degree Offset			10 Degree Offset			20 Degree Offset			Jib Oper. Rad. Feet
	Boom Ang. Deg.	Jib Point Elev. Feet	Jib Capacity Pounds	Boom Ang. Deg.	Jib Point Elev. Feet	Jib Capacity Pounds	Boom Ang. Deg.	Jib Point Elev. Feet	Jib Capacity Pounds	
250 Ft. BOOM										
60	80.3	304.8	20,000 *							60
65	79.3	303.8	20,000 *	80.9	302.7	20,000*				65
70	78.3	302.8	20,000 *	79.9	301.7	20,000*				70
75	77.4	301.7	20,000 *	78.9	300.5	20,000*	80.5	298.0	20,000*	75
80	76.4	300.4	20,000 *	78.0	299.3	20,000*	79.5	296.8	20,000*	80
85	75.4	299.1	20,000 *	77.0	298.0	20,000*	78.5	295.5	20,000*	85
90	74.4	297.7	20,000 *	76.0	296.6	20,000*	77.5	294.0	20,000*	90
100	72.4	294.6	20,000 *	74.0	293.5	20,000*	75.5	290.9	20,000*	100
110	70.4	291.2	20,000 *	72.0	290.0	20,000*	73.5	287.4	20,000*	110
120	68.4	287.3	17,800	69.9	286.1	19,100	71.4	283.4	20,000*	120
130	66.3	283.0	14,500	67.8	281.8	15,700	69.3	279.1	16,800	130
140	64.2	278.2	11,800	65.7	277.0	12,900	67.2	274.3	13,900	140
150	62.1	273.0	9,500	63.6	271.8	10,400	65.0	269.0	11,300	150
160	59.9	267.3	7,500	61.4	266.1	8,300	62.8	263.2	9,100	160
170	57.6	261.1	5,700	59.1	259.8	6,500	60.5	256.9	7,200	170
180	55.3	254.4	4,100	56.8	253.0	4,800	58.2	250.0	5,500	180
190							55.8	242.5	4,000	190
260 Ft. BOOM										
60	80.6	315.0	20,000 *							60
65	79.6	314.0	20,000 *							65
70	78.7	313.0	20,000 *	80.3	311.9	20,000*				70
75	77.8	311.9	20,000 *	79.3	310.8	20,000*	80.8	308.3	20,000*	75
80	76.8	310.7	20,000 *	78.4	309.6	20,000*	79.9	307.1	20,000*	80
85	75.9	309.5	20,000 *	77.4	308.3	20,000*	78.9	305.8	20,000*	85
90	74.9	308.1	20,000 *	76.5	307.0	20,000*	77.9	304.4	20,000*	90
100	73.0	305.1	20,000 *	74.5	304.0	20,000*	76.0	301.4	20,000*	100
110	71.1	301.8	20,000 *	72.6	300.6	20,000*	74.0	298.0	20,000*	110
120	69.1	298.0	17,200	70.6	296.9	18,500	72.0	294.2	19,800	120
130	67.1	293.9	14,000	68.6	292.7	15,200	70.0	290.0	16,300	130
140	65.1	289.4	11,200	66.6	288.1	12,300	68.0	285.4	13,400	140
150	63.0	284.4	8,900	64.5	283.1	9,900	65.9	280.3	10,800	150
160	60.9	278.9	6,900	62.4	277.6	7,800	63.8	274.8	8,600	160
170	58.8	273.0	5,100	60.3	271.7	5,900	61.6	268.8	6,700	170
180				58.1	265.2	4,300	59.4	262.2	5,000	180



Liftcrane Jib Capacities

New York City Code
Jib No. 123 With 12 Ft. 6 in. Strut On
Boom No. 82LR
149,600 Lb. Counterweight
360 Degree Rating

Meets
ANSI B30.5
Requirements

999 SERIES 1

60 Ft. JIB

Jib Oper. Rad. Feet	0 Degree Offset			10 Degree Offset			20 Degree Offset			Jib Oper. Rad. Feet
	Boom Ang. Deg.	Jib Point Elev. Feet	Jib Capacity Pounds	Boom Ang. Deg.	Jib Point Elev. Feet	Jib Capacity Pounds	Boom Ang. Deg.	Jib Point Elev. Feet	Jib Capacity Pounds	
120 Ft. BOOM										
40	80.0	186.5	10,000 *							40
45	78.4	185.5	10,000 *							45
50	76.8	184.3	10,000 *	80.0	183.4	10,000*				50
55	75.1	183.0	10,000 *	78.4	182.0	10,000*				55
60	73.5	181.5	10,000 *	76.7	180.5	10,000*	79.9	178.2	10,000*	60
65	71.8	179.8	10,000 *	75.0	178.9	10,000*	78.2	176.5	10,000*	65
70	70.2	178.0	10,000 *	73.3	177.1	10,000*	76.5	174.7	10,000*	70
75	68.5	176.1	10,000 *	71.6	175.1	10,000*	74.7	172.7	10,000*	75
80	66.7	173.9	10,000 *	69.9	172.9	10,000*	73.0	170.5	10,000*	80
85	65.0	171.6	10,000 *	68.2	170.6	10,000*	71.2	168.1	10,000*	85
90	63.2	169.1	10,000 *	66.4	168.1	10,000*	69.4	165.5	10,000*	90
100	59.6	163.5	10,000 *	62.7	162.4	10,000*	65.7	159.8	10,000*	100
110	55.9	156.9	10,000 *	58.9	155.8	10,000*	61.8	153.1	10,000*	110
120	51.9	149.4	10,000 *	55.0	148.2	10,000*	57.8	145.3	10,000*	120
130	47.7	140.7	10,000 *	50.7	139.5	10,000*	53.5	136.4	10,000*	130
140	43.2	130.6	10,000 *	46.2	129.2	10,000*	48.8	125.9	10,000*	140
150	38.3	118.7	10,000 *	41.2	117.1	10,000*	43.7	113.4	10,000*	150
160	32.8	104.2	10,000 *	35.6	102.5	10,000*				160
170	26.2	85.9	10,000 *	28.9	83.7	10,000*				170
130 Ft. BOOM										
40	80.5	196.7	10,000 *							40
45	79.0	195.7	10,000 *							45
50	77.5	194.6	10,000 *	80.5	193.6	10,000*				50
55	75.9	193.3	10,000 *	79.0	192.4	10,000*				55
60	74.4	191.9	10,000 *	77.4	191.0	10,000*	80.4	188.6	10,000*	60
65	72.8	190.4	10,000 *	75.9	189.4	10,000*	78.8	187.0	10,000*	65
70	71.2	188.7	10,000 *	74.3	187.7	10,000*	77.2	185.3	10,000*	70
75	69.6	186.8	10,000 *	72.7	185.8	10,000*	75.6	183.4	10,000*	75
80	68.0	184.8	10,000 *	71.0	183.8	10,000*	74.0	181.3	10,000*	80
85	66.4	182.6	10,000 *	69.4	181.6	10,000*	72.3	179.1	10,000*	85
90	64.7	180.3	10,000 *	67.7	179.2	10,000*	70.6	176.7	10,000*	90
100	61.4	175.0	10,000 *	64.3	174.0	10,000*	67.2	171.3	10,000*	100
110	57.9	169.0	10,000 *	60.8	167.9	10,000*	63.6	165.1	10,000*	110
120	54.2	162.1	10,000 *	57.1	160.9	10,000*	59.8	158.0	10,000*	120
130	50.4	154.1	10,000 *	53.3	152.9	10,000*	55.9	149.8	10,000*	130
140	46.4	145.0	10,000 *	49.2	143.7	10,000*	51.7	140.4	10,000*	140
150	42.0	134.4	10,000 *	44.8	133.0	10,000*	47.2	129.4	10,000*	150
160	37.2	122.0	10,000 *	40.0	120.4	10,000*	42.2	116.5	10,000*	160
170	31.9	107.0	10,000 *	34.5	105.2	10,000*				170
180	25.5	88.1	10,000 *	28.0	85.9	10,000*				180



Liftcrane Jib Capacities

New York City Code
 Jib No. 123 With 12 Ft. 6 in. Strut On
 Boom No. 82LR
 149,600 Lb. Counterweight
 360 Degree Rating

Meets
 ANSI B30.5
 Requirements

999 SERIES 1

60 Ft. JIB

Jib Oper. Rad. Feet	0 Degree Offset			10 Degree Offset			20 Degree Offset			Jib Oper. Rad. Feet
	Boom Ang. Deg.	Jib Point Elev. Feet	Jib Capacity Pounds	Boom Ang. Deg.	Jib Point Elev. Feet	Jib Capacity Pounds	Boom Ang. Deg.	Jib Point Elev. Feet	Jib Capacity Pounds	
140 Ft. BOOM										
40	81.0	206.8	10,000 *							40
45	79.6	205.9	10,000 *							45
50	78.1	204.8	10,000 *	81.0	203.9	10,000*				50
55	76.7	203.7	10,000 *	79.5	202.7	10,000*				55
60	75.2	202.3	10,000 *	78.1	201.3	10,000*	80.9	198.9	10,000*	60
65	73.7	200.9	10,000 *	76.6	199.9	10,000*	79.4	197.4	10,000*	65
70	72.2	199.3	10,000 *	75.1	198.3	10,000*	77.9	195.8	10,000*	70
75	70.7	197.5	10,000 *	73.6	196.5	10,000*	76.4	194.0	10,000*	75
80	69.2	195.6	10,000 *	72.0	194.6	10,000*	74.8	192.1	10,000*	80
85	67.6	193.6	10,000 *	70.5	192.5	10,000*	73.3	190.0	10,000*	85
90	66.1	191.4	10,000 *	68.9	190.3	10,000*	71.7	187.7	10,000*	90
100	62.9	186.4	10,000 *	65.7	185.3	10,000*	68.4	182.7	10,000*	100
110	59.7	180.8	10,000 *	62.5	179.7	10,000*	65.1	176.9	10,000*	110
120	56.3	174.3	10,000 *	59.1	173.2	10,000*	61.6	170.3	10,000*	120
130	52.8	167.0	10,000 *	55.5	165.8	10,000*	58.0	162.8	10,000*	130
140	49.0	158.7	10,000 *	51.8	157.4	10,000*	54.2	154.2	10,000*	140
150	45.1	149.1	10,000 *	47.8	147.7	10,000*	50.2	144.3	10,000*	150
160	40.9	138.1	10,000 *	43.5	136.6	10,000*	45.8	132.9	10,000*	160
170	36.3	125.2	10,000 *	38.8	123.6	10,000*	40.9	119.4	10,000*	170
180	31.0	109.8	10,000 *	33.5	107.9	10,000*				180
190	24.8	90.3	10,000 *							190



Liftcrane Jib Capacities

New York City Code
Jib No. 123 With 12 Ft. 6 in. Strut On
Boom No. 82LR
149,600 Lb. Counterweight
360 Degree Rating

Meets
ANSI B30.5
Requirements

999 SERIES 1

60 Ft. JIB

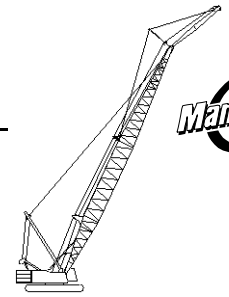
Jib Oper. Rad. Feet	0 Degree Offset			10 Degree Offset			20 Degree Offset			Jib Oper. Rad. Feet
	Boom Ang. Deg.	Jib Point Elev. Feet	Jib Capacity Pounds	Boom Ang. Deg.	Jib Point Elev. Feet	Jib Capacity Pounds	Boom Ang. Deg.	Jib Point Elev. Feet	Jib Capacity Pounds	
150 Ft. BOOM										
45	80.1	216.1	10,000 *							45
50	78.7	215.1	10,000 *							50
55	77.3	214.0	10,000 *	80.1	212.9	10,000*				55
60	75.9	212.7	10,000 *	78.7	211.7	10,000*				60
65	74.5	211.3	10,000 *	77.2	210.3	10,000*	80.0	207.8	10,000*	65
70	73.1	209.8	10,000 *	75.8	208.8	10,000*	78.5	206.2	10,000*	70
75	71.7	208.1	10,000 *	74.4	207.1	10,000*	77.1	204.6	10,000*	75
80	70.2	206.3	10,000 *	72.9	205.3	10,000*	75.6	202.7	10,000*	80
85	68.8	204.4	10,000 *	71.5	203.3	10,000*	74.1	200.7	10,000*	85
90	67.3	202.3	10,000 *	70.0	201.2	10,000*	72.6	198.6	10,000*	90
100	64.3	197.7	10,000 *	67.0	196.6	10,000*	69.6	193.9	10,000*	100
110	61.2	192.4	10,000 *	63.9	191.2	10,000*	66.4	188.5	10,000*	110
120	58.1	186.3	10,000 *	60.7	185.2	10,000*	63.2	182.3	10,000*	120
130	54.8	179.5	10,000 *	57.4	178.3	10,000*	59.9	175.3	10,000*	130
140	51.4	171.8	10,000 *	54.0	170.5	10,000*	56.3	167.4	10,000*	140
150	47.8	163.1	10,000 *	50.4	161.7	10,000*	52.6	158.4	10,000*	150
160	44.0	153.1	10,000 *	46.5	151.7	10,000*	48.7	148.2	10,000*	160
170	39.9	141.7	10,000 *	42.4	140.2	10,000*	44.4	136.3	10,000*	170
180	35.3	128.4	10,000 *	37.8	126.7	10,000*	39.7	122.4	10,000*	180
190	30.2	112.4	10,000 *	32.6	110.4	10,000*				190
200	24.2	92.4	10,000 *							200



Liftcrane Jib Capacities

New York City Code
 Jib No. 123 With 12 Ft. 6 in. Strut On
 Boom No. 82LR
 149,600 Lb. Counterweight
 360 Degree Rating

Meets
 ANSI B30.5
 Requirements



999 SERIES 1

60 Ft. JIB

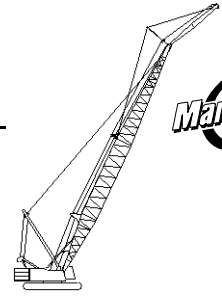
Jib Oper. Rad. Feet	0 Degree Offset			10 Degree Offset			20 Degree Offset			Jib Oper. Rad. Feet
	Boom Ang. Deg.	Jib Point Elev. Feet	Jib Capacity Pounds	Boom Ang. Deg.	Jib Point Elev. Feet	Jib Capacity Pounds	Boom Ang. Deg.	Jib Point Elev. Feet	Jib Capacity Pounds	
160 Ft. BOOM										
45	80.5	226.3	10,000 *							45
50	79.2	225.3	10,000 *							50
55	77.9	224.2	10,000 *	80.5	223.2	10,000*				55
60	76.5	223.0	10,000 *	79.2	222.0	10,000*				60
65	75.2	221.7	10,000 *	77.8	220.7	10,000*	80.4	218.1	10,000*	65
70	73.9	220.3	10,000 *	76.5	219.2	10,000*	79.1	216.7	10,000*	70
75	72.5	218.7	10,000 *	75.1	217.6	10,000*	77.7	215.1	10,000*	75
80	71.1	217.0	10,000 *	73.8	215.9	10,000*	76.3	213.3	10,000*	80
85	69.8	215.1	10,000 *	72.4	214.1	10,000*	74.9	211.5	10,000*	85
90	68.4	213.2	10,000 *	71.0	212.1	10,000*	73.5	209.4	10,000*	90
100	65.6	208.8	10,000 *	68.1	207.7	10,000*	70.6	205.0	10,000*	100
110	62.7	203.8	10,000 *	65.2	202.6	10,000*	67.6	199.9	10,000*	110
120	59.7	198.1	10,000 *	62.2	196.9	10,000*	64.6	194.1	10,000*	120
130	56.6	191.7	10,000 *	59.1	190.5	10,000*	61.5	187.6	10,000*	130
140	53.4	184.6	10,000 *	55.9	183.3	10,000*	58.2	180.2	10,000*	140
150	50.1	176.5	10,000 *	52.6	175.2	10,000*	54.8	171.9	10,000*	150
160	46.6	167.4	10,000 *	49.1	166.0	10,000*	51.2	162.6	10,000*	160
170	42.9	157.1	10,000 *	45.3	155.6	10,000*	47.4	151.9	10,000*	170
180	38.9	145.2	10,000 *	41.3	143.6	10,000*	43.2	139.6	10,000*	180
190	34.5	131.5	10,000 *	36.8	129.7	10,000*	38.6	125.2	10,000*	190
200	29.5	115.0	10,000 *	31.7	113.0	10,000*				200
210	23.6	94.4	10,000 *							210



Liftcrane Jib Capacities

New York City Code
 Jib No. 123 With 12 Ft. 6 in. Strut On
 Boom No. 82LR
 149,600 Lb. Counterweight
 360 Degree Rating

Meets
 ANSI B30.5
 Requirements



999 SERIES 1

60 Ft. JIB

Jib Oper. Rad. Feet	0 Degree Offset			10 Degree Offset			20 Degree Offset			Jib Oper. Rad. Feet
	Boom Ang. Deg.	Jib Point Elev. Feet	Jib Capacity Pounds	Boom Ang. Deg.	Jib Point Elev. Feet	Jib Capacity Pounds	Boom Ang. Deg.	Jib Point Elev. Feet	Jib Capacity Pounds	
170 Ft. BOOM										
45	80.9	236.4	10,000 *							45
50	79.7	235.5	10,000 *							50
55	78.4	234.5	10,000 *	80.9	233.4	10,000*				55
60	77.1	233.3	10,000 *	79.7	232.3	10,000*				60
65	75.9	232.1	10,000 *	78.4	231.0	10,000*	80.9	228.5	10,000*	65
70	74.6	230.7	10,000 *	77.1	229.6	10,000*	79.6	227.0	10,000*	70
75	73.3	229.2	10,000 *	75.8	228.1	10,000*	78.2	225.5	10,000*	75
80	72.0	227.6	10,000 *	74.5	226.5	10,000*	76.9	223.9	10,000*	80
85	70.7	225.8	10,000 *	73.2	224.7	10,000*	75.6	222.1	10,000*	85
90	69.4	223.9	10,000 *	71.8	222.8	10,000*	74.2	220.2	10,000*	90
100	66.7	219.8	10,000 *	69.1	218.6	10,000*	71.5	215.9	10,000*	100
110	63.9	215.0	10,000 *	66.4	213.9	10,000*	68.7	211.1	10,000*	110
120	61.1	209.7	10,000 *	63.6	208.5	10,000*	65.9	205.7	10,000*	120
130	58.2	203.7	10,000 *	60.7	202.5	10,000*	62.9	199.5	10,000*	130
140	55.3	197.0	10,000 *	57.7	195.7	10,000*	59.9	192.7	10,000*	140
150	52.2	189.4	10,000 *	54.6	188.1	10,000*	56.7	185.0	10,000*	150
160	48.9	181.0	10,000 *	51.3	179.7	10,000*	53.4	176.3	10,000*	160
170	45.5	171.6	10,000 *	47.9	170.1	10,000*	49.9	166.6	10,000*	170
180	41.9	160.9	10,000 *	44.2	159.3	10,000*	46.1	155.5	10,000*	180
190	38.0	148.6	10,000 *	40.2	147.0	10,000*	42.1	142.8	10,000*	190
200	33.7	134.5	10,000 *	35.9	132.6	10,000*				200
210	28.8	117.6	9,900	31.0	115.4	10,000*				210
220	23.1	96.4	8,800							220



Liftcrane Jib Capacities

New York City Code
 Jib No. 123 With 12 Ft. 6 in. Strut On
 Boom No. 82LR
 149,600 Lb. Counterweight
 360 Degree Rating

**Meets
 ANSI B30.5
 Requirements**

999 SERIES 1

60 Ft. JIB

Jib Oper. Rad. Feet	0 Degree Offset			10 Degree Offset			20 Degree Offset			Jib Oper. Rad. Feet
	Boom Ang. Deg.	Jib Point Elev. Feet	Jib Capacity Pounds	Boom Ang. Deg.	Jib Point Elev. Feet	Jib Capacity Pounds	Boom Ang. Deg.	Jib Point Elev. Feet	Jib Capacity Pounds	
180 Ft. BOOM										
50	80.1	245.7	10,000 *							50
55	78.9	244.7	10,000 *							55
60	77.7	243.6	10,000 *	80.1	242.5	10,000*				60
65	76.5	242.4	10,000 *	78.9	241.3	10,000*				65
70	75.2	241.1	10,000 *	77.6	240.0	10,000*	80.0	237.4	10,000*	70
75	74.0	239.6	10,000 *	76.4	238.6	10,000*	78.8	235.9	10,000*	75
80	72.8	238.1	10,000 *	75.2	237.0	10,000*	77.5	234.4	10,000*	80
85	71.5	236.4	10,000 *	73.9	235.3	10,000*	76.2	232.7	10,000*	85
90	70.3	234.6	10,000 *	72.6	233.5	10,000*	74.9	230.8	10,000*	90
100	67.7	230.7	10,000 *	70.1	229.5	10,000*	72.3	226.8	10,000*	100
110	65.1	226.2	10,000 *	67.5	225.0	10,000*	69.7	222.2	10,000*	110
120	62.4	221.1	10,000 *	64.8	219.9	10,000*	67.0	217.1	10,000*	120
130	59.7	215.4	10,000 *	62.0	214.2	10,000*	64.2	211.3	10,000*	130
140	56.9	209.1	10,000 *	59.2	207.9	10,000*	61.3	204.8	10,000*	140
150	54.0	202.1	10,000 *	56.3	200.8	10,000*	58.4	197.6	10,000*	150
160	51.0	194.2	10,000 *	53.3	192.9	10,000*	55.3	189.6	10,000*	160
170	47.8	185.4	10,000 *	50.1	184.0	10,000*	52.1	180.6	10,000*	170
180	44.5	175.6	10,000 *	46.7	174.2	10,000*	48.6	170.5	10,000*	180
190	41.0	164.6	10,000 *	43.2	163.0	10,000*	45.0	159.1	10,000*	190
200	37.2	152.0	10,000 *	39.3	150.3	10,000*	41.0	146.0	10,000*	200
210	33.0	137.4	9,500	35.1	135.5	9,800				210
220	28.2	120.1	8,400	30.2	117.8	8,600				220
230	22.6	98.4	7,400							230



Liftcrane Jib Capacities

New York City Code
Jib No. 123 With 12 Ft. 6 in. Strut On
Boom No. 82LR
149,600 Lb. Counterweight
360 Degree Rating

Meets
ANSI B30.5
Requirements

999 SERIES 1

60 Ft. JIB

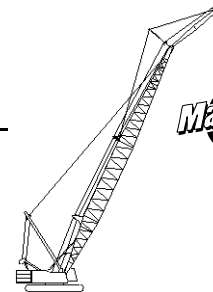
Jib Oper. Rad. Feet	0 Degree Offset			10 Degree Offset			20 Degree Offset			Jib Oper. Rad. Feet
	Boom Ang. Deg.	Jib Point Elev. Feet	Jib Capacity Pounds	Boom Ang. Deg.	Jib Point Elev. Feet	Jib Capacity Pounds	Boom Ang. Deg.	Jib Point Elev. Feet	Jib Capacity Pounds	
190 Ft. BOOM										
50	80.5	255.8	10,000 *							50
55	79.3	254.9	10,000 *							55
60	78.2	253.8	10,000 *	80.5	252.8	10,000*				60
65	77.0	252.7	10,000 *	79.3	251.6	10,000*				65
70	75.8	251.4	10,000 *	78.2	250.3	10,000*	80.4	247.7	10,000*	70
75	74.7	250.1	10,000 *	77.0	249.0	10,000*	79.2	246.3	10,000*	75
80	73.5	248.6	10,000 *	75.8	247.5	10,000*	78.0	244.8	10,000*	80
85	72.3	247.0	10,000 *	74.6	245.9	10,000*	76.8	243.2	10,000*	85
90	71.1	245.3	10,000 *	73.4	244.2	10,000*	75.6	241.5	10,000*	90
100	68.6	241.5	10,000 *	70.9	240.3	10,000*	73.1	237.6	10,000*	100
110	66.2	237.2	10,000 *	68.4	236.0	10,000*	70.6	233.2	10,000*	110
120	63.6	232.4	10,000 *	65.9	231.2	10,000*	68.0	228.3	10,000*	120
130	61.0	227.0	10,000 *	63.3	225.8	10,000*	65.4	222.9	10,000*	130
140	58.4	221.0	10,000 *	60.6	219.8	10,000*	62.7	216.8	10,000*	140
150	55.7	214.4	10,000 *	57.9	213.1	10,000*	59.9	210.0	10,000*	150
160	52.8	207.0	10,000 *	55.0	205.7	10,000*	57.0	202.5	10,000*	160
170	49.9	198.8	10,000 *	52.1	197.5	10,000*	54.0	194.1	10,000*	170
180	46.8	189.8	10,000 *	49.0	188.3	10,000*	50.8	184.8	10,000*	180
190	43.6	179.6	10,000 *	45.7	178.1	10,000*	47.5	174.3	10,000*	190
200	40.1	168.2	10,000 *	42.2	166.6	10,000*	43.9	162.5	10,000*	200
210	36.4	155.3	9,100	38.4	153.5	9,500	40.0	149.0	9,700	210
220	32.3	140.3	8,100	34.3	138.3	8,300				220
230	27.6	122.5	7,100	29.5	120.2	7,300				230
240	22.1	100.3	6,200							240



Liftcrane Jib Capacities

New York City Code
 Jib No. 123 With 12 Ft. 6 in. Strut On
 Boom No. 82LR
 149,600 Lb. Counterweight
 360 Degree Rating

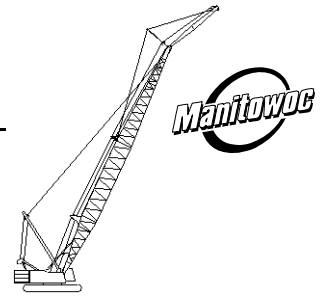
Meets
 ANSI B30.5
 Requirements



999 SERIES 1

60 Ft. JIB

Jib Oper. Rad. Feet	0 Degree Offset			10 Degree Offset			20 Degree Offset			Jib Oper. Rad. Feet
	Boom Ang. Deg.	Jib Point Elev. Feet	Jib Capacity Pounds	Boom Ang. Deg.	Jib Point Elev. Feet	Jib Capacity Pounds	Boom Ang. Deg.	Jib Point Elev. Feet	Jib Capacity Pounds	
200 Ft. BOOM										
50	80.9	266.0	10,000 *							50
55	79.8	265.1	10,000 *							55
60	78.6	264.1	10,000 *	80.9	263.0	10,000*				60
65	77.5	263.0	10,000 *	79.7	261.9	10,000*				65
70	76.4	261.8	10,000 *	78.6	260.7	10,000*	80.8	258.0	10,000*	70
75	75.3	260.4	10,000 *	77.5	259.3	10,000*	79.7	256.7	10,000*	75
80	74.1	259.0	10,000 *	76.3	257.9	10,000*	78.5	255.2	10,000*	80
85	73.0	257.5	10,000 *	75.2	256.4	10,000*	77.3	253.7	10,000*	85
90	71.8	255.8	10,000 *	74.0	254.7	10,000*	76.2	252.0	10,000*	90
100	69.5	252.2	10,000 *	71.7	251.1	10,000*	73.8	248.3	10,000*	100
110	67.1	248.1	10,000 *	69.3	247.0	10,000*	71.4	244.2	10,000*	110
120	64.7	243.5	10,000 *	66.9	242.4	10,000*	68.9	239.5	10,000*	120
130	62.3	238.4	10,000 *	64.4	237.2	10,000*	66.4	234.3	10,000*	130
140	59.7	232.7	10,000 *	61.9	231.5	10,000*	63.9	228.5	10,000*	140
150	57.1	226.5	10,000 *	59.3	225.2	10,000*	61.2	222.1	10,000*	150
160	54.5	219.5	10,000 *	56.6	218.2	10,000*	58.5	215.0	10,000*	160
170	51.7	211.9	8,800	53.8	210.5	9,500	55.7	207.2	10,000*	170
180	48.9	203.4	7,200	50.9	202.0	7,900	52.7	198.5	8,500	180
190	45.8	194.0	5,800	47.9	192.5	6,400	49.7	188.8	6,900	190
200	42.7	183.5	4,600	44.7	181.9	5,100	46.4	178.1	5,600	200
210							42.9	165.9	4,300	210



Liftcrane Jib Capacities

Meets
ANSI B30.5
Requirements

New York City Code
Jib No. 123 With 12 Ft. 6 in. Strut On
Boom No. 82LR
149,600 Lb. Counterweight
360 Degree Rating

999 SERIES 1

60 Ft. JIB

Jib Oper. Rad. Feet	0 Degree Offset			10 Degree Offset			20 Degree Offset			Jib Oper. Rad. Feet
	Boom Ang. Deg.	Jib Point Elev. Feet	Jib Capacity Pounds	Boom Ang. Deg.	Jib Point Elev. Feet	Jib Capacity Pounds	Boom Ang. Deg.	Jib Point Elev. Feet	Jib Capacity Pounds	
210 Ft. BOOM										
55	80.1	275.3	10,000 *							55
60	79.1	274.3	10,000 *							60
65	78.0	273.2	10,000 *	80.1	272.1	10,000*				65
70	76.9	272.1	10,000 *	79.0	271.0	10,000*				70
75	75.8	270.8	10,000 *	78.0	269.7	10,000*	80.1	267.0	10,000*	75
80	74.7	269.4	10,000 *	76.9	268.3	10,000*	78.9	265.6	10,000*	80
85	73.6	268.0	10,000 *	75.8	266.8	10,000*	77.8	264.1	10,000*	85
90	72.5	266.4	10,000 *	74.6	265.3	10,000*	76.7	262.5	10,000*	90
100	70.3	262.9	10,000 *	72.4	261.8	10,000*	74.4	259.0	10,000*	100
110	68.0	259.0	10,000 *	70.1	257.8	10,000*	72.1	255.0	10,000*	110
120	65.7	254.6	10,000 *	67.8	253.4	10,000*	69.8	250.6	10,000*	120
130	63.4	249.7	10,000 *	65.4	248.5	10,000*	67.4	245.6	10,000*	130
140	61.0	244.3	10,000 *	63.0	243.1	10,000*	65.0	240.1	10,000*	140
150	58.5	238.3	10,000 *	60.6	237.1	10,000*	62.5	234.0	10,000*	150
160	56.0	231.8	10,000 *	58.0	230.5	10,000*	59.9	227.3	10,000*	160
170	53.4	224.5	8,200	55.4	223.2	9,000	57.2	219.9	9,700	170
180	50.7	216.6	6,700	52.7	215.2	7,400	54.5	211.8	8,000	180
190	47.9	207.8	5,300	49.9	206.4	5,900	51.6	202.8	6,500	190
200	44.9	198.1	4,000	46.9	196.6	4,600	48.6	192.8	5,100	200
220 Ft. BOOM										
55	80.5	285.4	10,000 *							55
60	79.5	284.5	10,000 *							60
65	78.4	283.5	10,000 *	80.5	282.4	10,000*				65
70	77.4	282.3	10,000 *	79.4	281.2	10,000*				70
75	76.3	281.1	10,000 *	78.4	280.0	10,000*	80.4	277.3	10,000*	75
80	75.3	279.8	10,000 *	77.3	278.7	10,000*	79.4	276.0	10,000*	80
85	74.2	278.4	10,000 *	76.3	277.3	10,000*	78.3	274.5	10,000*	85
90	73.2	276.9	10,000 *	75.2	275.7	10,000*	77.2	273.0	10,000*	90
100	71.0	273.5	10,000 *	73.1	272.4	10,000*	75.0	269.6	10,000*	100
110	68.8	269.8	10,000 *	70.9	268.6	10,000*	72.8	265.8	10,000*	110
120	66.6	265.6	10,000 *	68.7	264.4	10,000*	70.6	261.5	10,000*	120
130	64.4	260.9	10,000 *	66.4	259.7	10,000*	68.3	256.8	10,000*	130
140	62.1	255.7	10,000 *	64.1	254.5	10,000*	66.0	251.5	10,000*	140
150	59.8	250.1	10,000 *	61.7	248.8	10,000*	63.6	245.7	10,000*	150
160	57.4	243.8	9,400	59.3	242.5	10,000*	61.1	239.4	10,000*	160
170	54.9	237.0	7,700	56.9	235.6	8,500	58.6	232.4	9,200	170
180	52.3	229.5	6,100	54.3	228.1	6,900	56.0	224.7	7,500	180
190	49.7	221.2	4,700	51.6	219.8	5,400	53.3	216.3	6,000	190
200				48.9	210.7	4,100	50.5	207.0	4,600	200



Liftcrane Jib Capacities

New York City Code
Jib No. 123 With 12 Ft. 6 in. Strut On
Boom No. 82LR
149,600 Lb. Counterweight
360 Degree Rating

Meets
ANSI B30.5
Requirements

999 SERIES 1

60 Ft. JIB

Jib Oper. Rad. Feet	0 Degree Offset			10 Degree Offset			20 Degree Offset			Jib Oper. Rad. Feet
	Boom Ang. Deg.	Jib Point Elev. Feet	Jib Capacity Pounds	Boom Ang. Deg.	Jib Point Elev. Feet	Jib Capacity Pounds	Boom Ang. Deg.	Jib Point Elev. Feet	Jib Capacity Pounds	
230 Ft. BOOM										
55	80.8	295.6	10,000 *							55
60	79.8	294.7	10,000 *							60
65	78.8	293.7	10,000 *	80.8	292.6	10,000*				65
70	77.8	292.6	10,000 *	79.8	291.5	10,000*				70
75	76.8	291.4	10,000 *	78.8	290.3	10,000*	80.8	287.6	10,000*	75
80	75.8	290.2	10,000 *	77.8	289.0	10,000*	79.7	286.3	10,000*	80
85	74.8	288.8	10,000 *	76.8	287.7	10,000*	78.7	284.9	10,000*	85
90	73.8	287.3	10,000 *	75.7	286.2	10,000*	77.7	283.4	10,000*	90
100	71.7	284.1	10,000 *	73.7	283.0	10,000*	75.6	280.2	10,000*	100
110	69.6	280.5	10,000 *	71.6	279.3	10,000*	73.5	276.5	10,000*	110
120	67.5	276.5	10,000 *	69.4	275.3	10,000*	71.3	272.4	10,000*	120
130	65.3	272.0	10,000 *	67.3	270.8	10,000*	69.1	267.9	10,000*	130
140	63.1	267.1	10,000 *	65.1	265.8	10,000*	66.9	262.8	10,000*	140
150	60.9	261.6	10,000 *	62.8	260.4	10,000*	64.6	257.3	10,000*	150
160	58.6	255.7	8,900	60.5	254.4	9,800	62.3	251.3	10,000*	160
170	56.3	249.2	7,100	58.2	247.9	8,000	59.9	244.6	8,800	170
180	53.9	242.0	5,500	55.7	240.7	6,300	57.4	237.4	7,000	180
190	51.4	234.3	4,200	53.2	232.9	4,900	54.9	229.4	5,500	190
200							52.3	220.7	4,100	200
240 Ft. BOOM										
60	80.2	304.8	10,000 *							60
65	79.2	303.9	10,000 *							65
70	78.2	302.8	10,000 *	80.2	301.7	10,000*				70
75	77.3	301.7	10,000 *	79.2	300.6	10,000*				75
80	76.3	300.5	10,000 *	78.2	299.3	10,000*	80.1	296.6	10,000*	80
85	75.3	299.2	10,000 *	77.2	298.0	10,000*	79.1	295.3	10,000*	85
90	74.3	297.8	10,000 *	76.2	296.6	10,000*	78.1	293.8	10,000*	90
100	72.3	294.7	10,000 *	74.2	293.5	10,000*	76.1	290.7	10,000*	100
110	70.3	291.2	10,000 *	72.2	290.0	10,000*	74.0	287.2	10,000*	110
120	68.3	287.3	10,000 *	70.2	286.1	10,000*	72.0	283.2	10,000*	120
130	66.2	283.0	10,000 *	68.1	281.8	10,000*	69.9	278.9	10,000*	130
140	64.1	278.3	10,000 *	66.0	277.1	10,000*	67.7	274.1	10,000*	140
150	62.0	273.1	10,000 *	63.8	271.8	10,000*	65.6	268.8	10,000*	150
160	59.8	267.4	8,100	61.6	266.1	9,100	63.3	263.0	10,000*	160
170	57.5	261.2	6,400	59.4	259.9	7,300	61.1	256.7	8,100	170
180	55.2	254.4	4,800	57.1	253.1	5,600	58.7	249.8	6,400	180
190				54.7	245.6	4,200	56.3	242.2	4,900	190



Liftcrane Jib Capacities

New York City Code
 Jib No. 123 With 12 Ft. 6 in. Strut On
 Boom No. 82LR
 149,600 Lb. Counterweight
 360 Degree Rating

Meets
 ANSI B30.5
 Requirements

999 SERIES 1

60 Ft. JIB

Jib Oper. Rad. Feet	0 Degree Offset			10 Degree Offset			20 Degree Offset			Jib Oper. Rad. Feet
	Boom Ang. Deg.	Jib Point Elev. Feet	Jib Capacity Pounds	Boom Ang. Deg.	Jib Point Elev. Feet	Jib Capacity Pounds	Boom Ang. Deg.	Jib Point Elev. Feet	Jib Capacity Pounds	
250 Ft. BOOM										
60	80.5	315.0	10,000 *							60
65	79.6	314.1	10,000 *							65
70	78.6	313.1	10,000 *	80.5	311.9	10,000*				70
75	77.7	312.0	10,000 *	79.5	310.8	10,000*				75
80	76.7	310.8	10,000 *	78.6	309.6	10,000*	80.4	306.9	10,000*	80
85	75.8	309.5	10,000 *	77.6	308.4	10,000*	79.5	305.6	10,000*	85
90	74.8	308.2	10,000 *	76.7	307.0	10,000*	78.5	304.2	10,000*	90
100	72.9	305.2	10,000 *	74.8	304.0	10,000*	76.6	301.2	10,000*	100
110	71.0	301.8	10,000 *	72.8	300.7	10,000*	74.6	297.8	10,000*	110
120	69.0	298.1	10,000 *	70.8	296.9	10,000*	72.6	294.0	10,000*	120
130	67.0	293.9	10,000 *	68.8	292.7	10,000*	70.6	289.8	10,000*	130
140	65.0	289.4	10,000 *	66.8	288.2	10,000*	68.5	285.2	10,000*	140
150	62.9	284.4	9,600	64.7	283.2	10,000*	66.4	280.1	10,000*	150
160	60.8	279.0	7,600	62.6	277.7	8,600	64.3	274.6	9,600	160
170	58.7	273.0	5,800	60.5	271.7	6,700	62.1	268.5	7,600	170
180	56.5	266.6	4,200	58.3	265.2	5,100	59.9	262.0	5,900	180
190							57.6	254.8	4,400	190