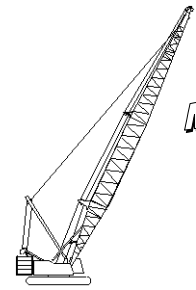




# Liftcrane Boom Capacities

Meets  
ANSI B30.5  
Requirements



## 999 SERIES 2

**Boom No. 82LR**  
**184,600 Lb. Crane Counterweight**  
**44,000 Lb. Carbody Counterweight**  
**Rating Over End of Blocked Crawlers**  
**No Travel - Limited Swing**

**LIFTING CAPACITIES:** Lifting capacities for various boom lengths and operating radii are for freely suspended loads and do not exceed 75% of a static tipping load over end of machine with crawlers blocked. Capacities based on structural competence are denoted by an asterisk (\*).

Upper boom point capacity for liftcrane service with single part whip line is 29,500 Lbs. When boom butt mounted auxiliary drum is used, capacity with single part whip line is 20,000 Lbs. In all cases, upper boom point capacities cannot exceed those listed for main boom capacity.

Weight of jib, all load blocks, hooks, weight ball, slings, hoist lines, etc., beneath boom and jib point sheaves, is considered part of main boom load. Boom is not to be lowered beyond radii where combined weights are greater than rated capacity. Where no capacity is shown, operation is not intended or approved.

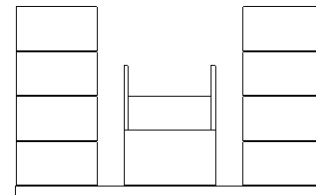
**OPERATING CONDITIONS:** Machine to operate in a level position on a firm uniformly supporting surface with gantry up. Drive and idler tumbler must be properly blocked so that centerline of tumbler becomes tipping fulcrum. Swing is limited to that sector shown on Operating Range Diagram No. 8224-A. Refer to boom rigging No. 196100 and Wire Rope Specification chart No. 8315-A. Crane operator judgment must be used to allow

for dynamic load effects of swinging, hoisting or lowering, wind conditions, as well as adverse operating conditions and physical machine depreciation. Refer to operators manual for operating guidelines.

**OPERATING RADIUS:** Operating radius is horizontal distance from axis of rotation to center of vertical hoist line or load block. Boom angle is angle between horizontal and centerline of boom butt and inserts, and is an indication of operating radius. In all cases, operating radius shall govern capacity.

**BOOM POINT ELEVATION:** Boom point elevation is vertical distance from ground level to centerline of boom point shaft.

**MACHINE EQUIPMENT:** Machine equipped with 28 Ft. 2 in. crawlers, 48 in. treads, 10 Ft. 3 in. retractable gantry, 30 Ft. live mast, 20 part boom hoist reeving, boom support straps, 184,600 Lb. crane counterweight and two 22,000 Lb. carbody counterweights.



184,600 Lb. Crane Counterweight  
8 Side Boxes - 1 Center Box

| Maximum Boom and Jib Lengths Lifted Unassisted                  |             |             |
|---|-------------|-------------|
| WITHOUT BOOM CATWALKS   |             |             |
| Over End of Blocked Crawlers                                    |             |             |
| Boom Length   | Jib No. 134 | Jib No. 123 |
| 320 Ft.   | —           | —           |
| 310 Ft.   | —           | —           |
| 300 Ft.   | —           | 40 Ft.      |
| 290 Ft.   | 50 Ft.      | 60 Ft.      |
| 280 Ft.   | 80 Ft.      | 60 Ft.      |
| WITH BOOM CATWALKS  |             |             |
| Over End of Blocked Crawlers                                    |             |             |
| Boom Length   | Jib No. 134 | Jib No. 123 |
| (a) 320 Ft.   | —           | —           |
| 310 Ft.   | —           | —           |
| 300 Ft.   | —           | 30 Ft.      |
| 290 Ft.   | 40 Ft.      | (a) 60 Ft.  |
| 280 Ft.   | 70 Ft.      | 60 Ft.      |
| 270 Ft.   | 80 Ft.      | 60 Ft.      |
| Load block, hook and weight ball on ground at start.            |             |             |
| (a) Machine must be equipped with lowerworks jacking cylinders. |             |             |

| Deduct From Capacities<br>When Jib Is Attached |             |             |
|--|-------------|-------------|
| Jib Length                                     | Jib No. 134 | Jib No. 123 |
| 30 Ft.   | 2,700 Lbs.  | 2,500 Lbs.  |
| 40 Ft.   | 3,500 Lbs.  | 3,100 Lbs.  |
| 50 Ft.   | 4,300 Lbs.  | 3,700 Lbs.  |
| 60 Ft.   | 5,100 Lbs.  | 4,400 Lbs.  |
| 70 Ft.   | 6,100 Lbs.  | —           |
| 80 Ft.   | 7,100 Lbs.  | —           |

**Boom Catwalks Deduct**  
Deduct 700 Lbs. from capacities  
when boom catwalks are attached.

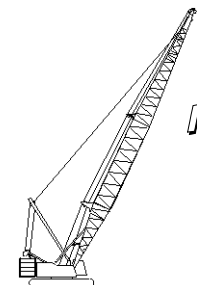
Consult jib chart for jib capacities. Upper boom point cannot be used when jib is attached.



# Liftcrane Boom Capacities

Meets  
**ANSI B30.5**  
Requirements

**Boom No. 82LR**  
**184,600 Lb. Crane Counterweight**  
**44,000 Lb. Carbody Counterweight**  
**Rating Over End of Blocked Crawlers**  
**No Travel - Limited Swing**



## 999 SERIES 2

| Oper. Rad. Feet     | Boom Ang. Deg. | Boom Point Elev. Feet | Boom Capacity Pounds |
|---------------------|----------------|-----------------------|----------------------|
| <b>120 Ft. Boom</b> |                |                       |                      |
| 24                  | 80.9           | 126.6                 | 265,500 *            |
| 26                  | 79.9           | 126.3                 | 265,500 *            |
| 28                  | 78.9           | 125.9                 | 252,400 *            |
| 30                  | 78.0           | 125.5                 | 240,300 *            |
| 32                  | 77.0           | 125.1                 | 229,200 *            |
| 34                  | 76.0           | 124.6                 | 219,100 *            |
| 36                  | 75.0           | 124.1                 | 209,800 *            |
| 38                  | 74.0           | 123.5                 | 201,300 *            |
| 40                  | 73.0           | 122.9                 | 192,000 *            |
| 42                  | 72.0           | 122.3                 | 182,400 *            |
| 44                  | 71.0           | 121.6                 | 173,600 *            |
| 46                  | 70.0           | 120.9                 | 165,200              |
| 48                  | 69.0           | 120.2                 | 155,400              |
| 50                  | 68.0           | 119.4                 | 146,600              |
| 55                  | 65.4           | 117.2                 | 128,200              |
| 60                  | 62.7           | 114.8                 | 113,700              |
| 65                  | 60.0           | 112.1                 | 101,900              |
| 70                  | 57.2           | 109.0                 | 92,100               |
| 75                  | 54.3           | 105.6                 | 83,900               |
| 80                  | 51.3           | 101.8                 | 76,900               |
| 85                  | 48.2           | 97.6                  | 70,900               |
| 90                  | 44.9           | 92.9                  | 65,600               |
| 95                  | 41.4           | 87.5                  | 61,000               |
| 100                 | 37.7           | 81.5                  | 56,800               |
| 105                 | 33.6           | 74.5                  | 53,200               |
| 110                 | 29.0           | 66.2                  | 49,800               |
| 115                 | 23.6           | 56.1                  | 46,800               |
| 120                 | 16.6           | 42.4                  | 41,700 *             |
| <b>130 Ft. Boom</b> |                |                       |                      |
| 26                  | 80.7           | 136.4                 | 265,500 *            |
| 28                  | 79.8           | 136.1                 | 263,400 *            |
| 30                  | 78.9           | 135.7                 | 251,300 *            |
| 32                  | 78.0           | 135.3                 | 240,300 *            |
| 34                  | 77.1           | 134.9                 | 229,800 *            |
| 36                  | 76.2           | 134.4                 | 217,100 *            |
| 38                  | 75.3           | 133.9                 | 205,700 *            |
| 40                  | 74.4           | 133.4                 | 195,400 *            |
| 42                  | 73.5           | 132.8                 | 186,100 *            |
| 44                  | 72.5           | 132.2                 | 176,200              |
| 46                  | 71.6           | 131.5                 | 165,200              |
| 48                  | 70.7           | 130.8                 | 155,300              |
| 50                  | 69.7           | 130.1                 | 146,500              |
| 55                  | 67.4           | 128.2                 | 128,100              |
| 60                  | 65.0           | 125.9                 | 113,600              |
| 65                  | 62.5           | 123.5                 | 101,800              |
| 70                  | 60.0           | 120.7                 | 92,000               |
| 75                  | 57.4           | 117.7                 | 83,800               |
| 80                  | 54.8           | 114.3                 | 76,800               |
| 85                  | 52.0           | 110.6                 | 70,800               |

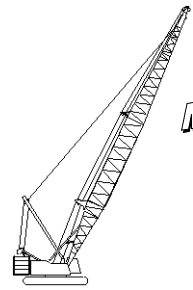
| Oper. Rad. Feet     | Boom Ang. Deg. | Boom Point Elev. Feet | Boom Capacity Pounds |
|---------------------|----------------|-----------------------|----------------------|
| <b>130 Ft. Boom</b> |                |                       |                      |
| 90                  | 49.2           | 106.5                 | 65,500               |
| 95                  | 46.2           | 102.0                 | 60,900               |
| 100                 | 43.0           | 96.9                  | 56,800               |
| 105                 | 39.7           | 91.2                  | 53,100               |
| 110                 | 36.1           | 84.8                  | 49,800               |
| 115                 | 32.2           | 77.4                  | 46,800               |
| 120                 | 27.8           | 68.8                  | 44,000               |
| 125                 | 22.6           | 58.2                  | 41,500               |
| 130                 | 15.9           | 43.9                  | 37,200 *             |
| <b>140 Ft. Boom</b> |                |                       |                      |
| 28                  | 80.5           | 146.3                 | 265,500 *            |
| 30                  | 79.7           | 145.9                 | 259,500 *            |
| 32                  | 78.9           | 145.5                 | 243,500 *            |
| 34                  | 78.0           | 145.1                 | 229,400 *            |
| 36                  | 77.2           | 144.7                 | 216,800 *            |
| 38                  | 76.4           | 144.2                 | 205,400 *            |
| 40                  | 75.5           | 143.7                 | 195,100 *            |
| 42                  | 74.7           | 143.2                 | 185,700 *            |
| 44                  | 73.8           | 142.6                 | 176,200              |
| 46                  | 73.0           | 142.0                 | 165,100              |
| 48                  | 72.1           | 141.4                 | 155,300              |
| 50                  | 71.3           | 140.7                 | 146,400              |
| 55                  | 69.1           | 138.9                 | 128,000              |
| 60                  | 66.9           | 136.9                 | 113,500              |
| 65                  | 64.6           | 134.6                 | 101,700              |
| 70                  | 62.3           | 132.1                 | 91,900               |
| 75                  | 60.0           | 129.4                 | 83,700               |
| 80                  | 57.6           | 126.4                 | 76,700               |
| 85                  | 55.2           | 123.0                 | 70,600               |
| 90                  | 52.6           | 119.4                 | 65,300               |
| 95                  | 50.0           | 115.4                 | 60,700               |
| 100                 | 47.3           | 111.0                 | 56,600               |
| 105                 | 44.4           | 106.1                 | 52,900               |
| 110                 | 41.4           | 100.8                 | 49,600               |
| 115                 | 38.2           | 94.8                  | 46,600               |
| 120                 | 34.8           | 88.0                  | 43,900               |
| 125                 | 31.0           | 80.3                  | 41,400               |
| 130                 | 26.8           | 71.2                  | 39,100               |
| 135                 | 21.8           | 60.1                  | 37,000 *             |
| 140                 | 15.4           | 45.2                  | 33,000 *             |

| Oper. Rad. Feet     | Boom Ang. Deg. | Boom Point Elev. Feet | Boom Capacity Pounds |
|---------------------|----------------|-----------------------|----------------------|
| <b>150 Ft. Boom</b> |                |                       |                      |
| 30                  | 80.4           | 156.1                 | 259,100 *            |
| 32                  | 79.6           | 155.7                 | 243,200 *            |
| 34                  | 78.9           | 155.3                 | 229,100 *            |
| 36                  | 78.1           | 154.9                 | 216,500 *            |
| 38                  | 77.3           | 154.5                 | 205,100 *            |
| 40                  | 76.5           | 154.0                 | 194,800 *            |
| 42                  | 75.7           | 153.5                 | 185,400 *            |
| 44                  | 74.9           | 153.0                 | 176,100              |
| 46                  | 74.1           | 152.4                 | 165,000              |
| 48                  | 73.3           | 151.9                 | 155,100              |
| 50                  | 72.5           | 151.2                 | 146,300              |
| 55                  | 70.5           | 149.6                 | 127,900              |
| 60                  | 68.5           | 147.7                 | 113,300              |
| 65                  | 66.4           | 145.6                 | 101,500              |
| 70                  | 64.3           | 143.3                 | 91,700               |
| 75                  | 62.2           | 140.8                 | 83,500               |
| 80                  | 60.0           | 138.1                 | 76,500               |
| 85                  | 57.8           | 135.0                 | 70,400               |
| 90                  | 55.5           | 131.7                 | 65,200               |
| 95                  | 53.1           | 128.2                 | 60,500               |
| 100                 | 50.7           | 124.2                 | 56,400               |
| 105                 | 48.2           | 120.0                 | 52,700               |
| 110                 | 45.6           | 115.3                 | 49,400               |
| 115                 | 42.8           | 110.1                 | 46,400               |
| 120                 | 39.9           | 104.5                 | 43,700               |
| 125                 | 36.9           | 98.2                  | 41,300               |
| 130                 | 33.6           | 91.1                  | 39,000               |
| 135                 | 29.9           | 83.0                  | 36,900               |
| 140                 | 25.8           | 73.5                  | 34,900               |
| 145                 | 21.0           | 62.0                  | 32,900 *             |



# Liftcrane Boom Capacities

Meets  
ANSI B30.5  
Requirements



**Boom No. 82LR**  
**184,600 Lb. Crane Counterweight**  
**44,000 Lb. Carbody Counterweight**  
**Rating Over End of Blocked Crawlers**  
**No Travel - Limited Swing**

## 999 SERIES 2

| Oper. Rad. Feet     | Boom Ang. Deg. | Boom Point Elev. Feet | Boom Capacity Pounds |
|---------------------|----------------|-----------------------|----------------------|
| <b>160 Ft. Boom</b> |                |                       |                      |
| 30                  | 81.0           | 166.2                 | 236,000 *            |
| 32                  | 80.3           | 165.9                 | 236,000 *            |
| 34                  | 79.6           | 165.5                 | 228,400 *            |
| 36                  | 78.8           | 165.1                 | 215,800 *            |
| 38                  | 78.1           | 164.7                 | 204,400 *            |
| 40                  | 77.4           | 164.3                 | 194,100 *            |
| 42                  | 76.6           | 163.8                 | 184,700 *            |
| 44                  | 75.9           | 163.3                 | 175,900              |
| 46                  | 75.2           | 162.8                 | 164,700              |
| 48                  | 74.4           | 162.3                 | 154,800              |
| 50                  | 73.7           | 161.7                 | 146,000              |
| 55                  | 71.8           | 160.1                 | 127,500              |
| 60                  | 69.9           | 158.4                 | 112,900              |
| 65                  | 68.0           | 156.5                 | 101,100              |
| 70                  | 66.0           | 154.4                 | 91,300               |
| 75                  | 64.1           | 152.0                 | 83,100               |
| 80                  | 62.0           | 149.5                 | 76,100               |
| 85                  | 60.0           | 146.7                 | 70,000               |
| 90                  | 57.9           | 143.7                 | 64,700               |
| 95                  | 55.8           | 140.4                 | 60,100               |
| 100                 | 53.6           | 136.9                 | 55,900               |
| 105                 | 51.3           | 133.1                 | 52,300               |
| 110                 | 49.0           | 128.9                 | 49,000               |
| 115                 | 46.6           | 124.3                 | 46,000               |
| 120                 | 44.0           | 119.4                 | 43,300               |
| 125                 | 41.4           | 114.0                 | 40,800               |
| 130                 | 38.6           | 108.0                 | 38,500               |
| 135                 | 35.7           | 101.4                 | 36,400               |
| 140                 | 32.5           | 94.0                  | 34,500               |
| 145                 | 29.0           | 85.6                  | 32,700               |
| 150                 | 25.0           | 75.8                  | 31,000               |
| 155                 | 20.4           | 63.8                  | 28,900 *             |

| Oper. Rad. Feet     | Boom Ang. Deg. | Boom Point Elev. Feet | Boom Capacity Pounds |
|---------------------|----------------|-----------------------|----------------------|
| <b>170 Ft. Boom</b> |                |                       |                      |
| 32                  | 80.9           | 176.0                 | 228,400 *            |
| 34                  | 80.2           | 175.7                 | 224,900 *            |
| 36                  | 79.5           | 175.3                 | 215,400 *            |
| 38                  | 78.8           | 174.9                 | 204,000 *            |
| 40                  | 78.1           | 174.5                 | 193,700 *            |
| 42                  | 77.4           | 174.1                 | 184,400 *            |
| 44                  | 76.7           | 173.6                 | 175,700              |
| 46                  | 76.0           | 173.1                 | 164,500              |
| 48                  | 75.3           | 172.6                 | 154,600              |
| 50                  | 74.7           | 172.1                 | 145,800              |
| 55                  | 72.9           | 170.6                 | 127,300              |
| 60                  | 71.1           | 169.0                 | 112,700              |
| 65                  | 69.3           | 167.2                 | 100,800              |
| 70                  | 67.5           | 165.2                 | 91,100               |
| 75                  | 65.7           | 163.1                 | 82,800               |
| 80                  | 63.8           | 160.7                 | 75,800               |
| 85                  | 61.9           | 158.2                 | 69,700               |
| 90                  | 60.0           | 155.4                 | 64,400               |
| 95                  | 58.0           | 152.4                 | 59,800               |
| 100                 | 56.0           | 149.1                 | 55,700               |
| 105                 | 54.0           | 145.6                 | 52,000               |
| 110                 | 51.9           | 141.8                 | 48,700               |
| 115                 | 49.7           | 137.8                 | 45,700               |
| 120                 | 47.4           | 133.4                 | 43,000               |
| 125                 | 45.1           | 128.6                 | 40,500               |
| 130                 | 42.7           | 123.4                 | 38,300               |
| 135                 | 40.1           | 117.7                 | 36,200               |
| 140                 | 37.4           | 111.5                 | 34,200               |
| 145                 | 34.6           | 104.6                 | 32,500               |
| 150                 | 31.5           | 96.9                  | 30,800               |
| 155                 | 28.1           | 88.2                  | 29,300               |
| 160                 | 24.2           | 78.0                  | 27,800               |
| 165                 | 19.7           | 65.6                  | 25,500 *             |

| Oper. Rad. Feet     | Boom Ang. Deg. | Boom Point Elev. Feet | Boom Capacity Pounds |
|---------------------|----------------|-----------------------|----------------------|
| <b>180 Ft. Boom</b> |                |                       |                      |
| 34                  | 80.7           | 185.8                 | 206,400 *            |
| 36                  | 80.1           | 185.5                 | 205,500 *            |
| 38                  | 79.4           | 185.1                 | 202,600 *            |
| 40                  | 78.8           | 184.7                 | 193,300 *            |
| 42                  | 78.1           | 184.3                 | 183,900 *            |
| 44                  | 77.5           | 183.9                 | 175,400 *            |
| 46                  | 76.8           | 183.4                 | 164,400              |
| 48                  | 76.2           | 182.9                 | 154,500              |
| 50                  | 75.5           | 182.4                 | 145,600              |
| 55                  | 73.9           | 181.1                 | 127,100              |
| 60                  | 72.2           | 179.5                 | 112,500              |
| 65                  | 70.5           | 177.9                 | 100,600              |
| 70                  | 68.8           | 176.0                 | 90,800               |
| 75                  | 67.1           | 174.0                 | 82,600               |
| 80                  | 65.4           | 171.8                 | 75,500               |
| 85                  | 63.6           | 169.4                 | 69,500               |
| 90                  | 61.8           | 166.8                 | 64,200               |
| 95                  | 60.0           | 164.0                 | 59,500               |
| 100                 | 58.1           | 161.0                 | 55,400               |
| 105                 | 56.3           | 157.8                 | 51,700               |
| 110                 | 54.3           | 154.4                 | 48,400               |
| 115                 | 52.3           | 150.6                 | 45,400               |
| 120                 | 50.3           | 146.6                 | 42,700               |
| 125                 | 48.2           | 142.3                 | 40,200               |
| 130                 | 46.0           | 137.7                 | 38,000               |
| 135                 | 43.8           | 132.7                 | 35,900               |
| 140                 | 41.4           | 127.2                 | 34,000               |
| 145                 | 38.9           | 121.3                 | 32,200               |
| 150                 | 36.3           | 114.8                 | 30,500               |
| 155                 | 33.6           | 107.7                 | 29,000               |
| 160                 | 30.6           | 99.7                  | 27,500               |
| 165                 | 27.3           | 90.6                  | 26,200               |
| 170                 | 23.6           | 80.1                  | 24,900 *             |
| 175                 | 19.2           | 67.3                  | 22,500 *             |

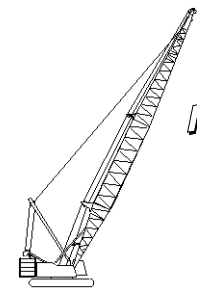


# Liftcrane Boom Capacities

Meets  
**ANSI B30.5**  
Requirements

**Boom No. 82LR**  
**184,600 Lb. Crane Counterweight**  
**44,000 Lb. Carbody Counterweight**  
**Rating Over End of Blocked Crawlers**  
**No Travel - Limited Swing**

## 999 SERIES 2



| Oper. Rad. Feet     | Boom Ang. Deg. | Boom Point Elev. Feet | Boom Capacity Pounds |
|---------------------|----------------|-----------------------|----------------------|
| <b>190 Ft. Boom</b> |                |                       |                      |
| 36                  | 80.6           | 195.6                 | 196,000 *            |
| 38                  | 80.0           | 195.3                 | 193,200 *            |
| 40                  | 79.4           | 194.9                 | 188,300 *            |
| 42                  | 78.8           | 194.5                 | 181,200 *            |
| 44                  | 78.2           | 194.1                 | 174,800 *            |
| 46                  | 77.5           | 193.7                 | 164,200              |
| 48                  | 76.9           | 193.2                 | 154,300              |
| 50                  | 76.3           | 192.7                 | 145,400              |
| 55                  | 74.7           | 191.5                 | 126,900              |
| 60                  | 73.2           | 190.0                 | 112,200              |
| 65                  | 71.6           | 188.4                 | 100,400              |
| 70                  | 70.0           | 186.7                 | 90,500               |
| 75                  | 68.4           | 184.8                 | 82,300               |
| 80                  | 66.8           | 182.7                 | 75,300               |
| 85                  | 65.1           | 180.5                 | 69,200               |
| 90                  | 63.4           | 178.1                 | 63,900               |
| 95                  | 61.7           | 175.5                 | 59,200               |
| 100                 | 60.0           | 172.7                 | 55,100               |
| 105                 | 58.2           | 169.7                 | 51,400               |
| 110                 | 56.5           | 166.5                 | 48,100               |
| 115                 | 54.6           | 163.1                 | 45,100               |
| 120                 | 52.8           | 159.4                 | 42,400               |
| 125                 | 50.8           | 155.5                 | 39,900               |
| 130                 | 48.9           | 151.2                 | 37,700               |
| 135                 | 46.8           | 146.7                 | 35,600               |
| 140                 | 44.7           | 141.8                 | 33,700               |
| 145                 | 42.5           | 136.6                 | 31,900               |
| 150                 | 40.3           | 130.9                 | 30,200               |
| 155                 | 37.9           | 124.8                 | 28,700               |
| 160                 | 35.3           | 118.0                 | 27,300               |
| 165                 | 32.6           | 110.6                 | 25,900               |
| 170                 | 29.7           | 102.4                 | 24,700               |
| 175                 | 26.5           | 93.0                  | 23,500               |
| 180                 | 22.9           | 82.1                  | 22,100 *             |
| 185                 | 18.7           | 69.0                  | 20,000 *             |

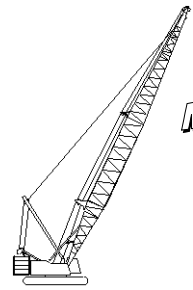
| Oper. Rad. Feet     | Boom Ang. Deg. | Boom Point Elev. Feet | Boom Capacity Pounds |
|---------------------|----------------|-----------------------|----------------------|
| <b>200 Ft. Boom</b> |                |                       |                      |
| 38                  | 80.5           | 205.4                 | 177,000 *            |
| 40                  | 79.9           | 205.1                 | 175,400 *            |
| 42                  | 79.3           | 204.7                 | 173,100 *            |
| 44                  | 78.8           | 204.3                 | 170,100 *            |
| 46                  | 78.2           | 203.9                 | 163,900              |
| 48                  | 77.6           | 203.5                 | 154,000              |
| 50                  | 77.0           | 203.0                 | 145,100              |
| 55                  | 75.5           | 201.8                 | 126,500              |
| 60                  | 74.0           | 200.4                 | 111,900              |
| 65                  | 72.5           | 198.9                 | 100,000              |
| 70                  | 71.0           | 197.3                 | 90,100               |
| 75                  | 69.5           | 195.5                 | 81,900               |
| 80                  | 68.0           | 193.6                 | 74,800               |
| 85                  | 66.4           | 191.5                 | 68,700               |
| 90                  | 64.8           | 189.2                 | 63,400               |
| 95                  | 63.3           | 186.8                 | 58,800               |
| 100                 | 61.6           | 184.1                 | 54,600               |
| 105                 | 60.0           | 181.4                 | 50,900               |
| 110                 | 58.3           | 178.4                 | 47,600               |
| 115                 | 56.6           | 175.2                 | 44,600               |
| 120                 | 54.9           | 171.8                 | 41,900               |
| 125                 | 53.1           | 168.2                 | 39,400               |
| 130                 | 51.3           | 164.3                 | 37,200               |
| 135                 | 49.5           | 160.1                 | 35,100               |
| 140                 | 47.5           | 155.7                 | 33,200               |
| 145                 | 45.6           | 151.0                 | 31,400               |
| 150                 | 43.5           | 145.9                 | 29,700               |
| 155                 | 41.4           | 140.4                 | 28,200               |
| 160                 | 39.2           | 134.5                 | 26,800               |
| 165                 | 36.9           | 128.2                 | 25,400               |
| 170                 | 34.4           | 121.2                 | 24,100               |
| 175                 | 31.8           | 113.5                 | 23,000               |
| 180                 | 29.0           | 105.0                 | 21,800               |
| 185                 | 25.8           | 95.3                  | 20,800               |
| 190                 | 22.3           | 84.1                  | 19,100 *             |
| 195                 | 18.2           | 70.6                  | 17,200 *             |

| Oper. Rad. Feet     | Boom Ang. Deg. | Boom Point Elev. Feet | Boom Capacity Pounds |
|---------------------|----------------|-----------------------|----------------------|
| <b>210 Ft. Boom</b> |                |                       |                      |
| 38                  | 81.0           | 215.5                 | 168,600 *            |
| 40                  | 80.4           | 215.2                 | 166,400 *            |
| 42                  | 79.9           | 214.9                 | 164,200 *            |
| 44                  | 79.3           | 214.5                 | 162,100 *            |
| 46                  | 78.7           | 214.1                 | 159,800 *            |
| 48                  | 78.2           | 213.7                 | 153,700              |
| 50                  | 77.6           | 213.3                 | 144,800              |
| 55                  | 76.2           | 212.1                 | 126,200              |
| 60                  | 74.8           | 210.8                 | 111,500              |
| 65                  | 73.4           | 209.4                 | 99,600               |
| 70                  | 72.0           | 207.8                 | 89,800               |
| 75                  | 70.5           | 206.1                 | 81,500               |
| 80                  | 69.1           | 204.3                 | 74,500               |
| 85                  | 67.6           | 202.3                 | 68,400               |
| 90                  | 66.1           | 200.2                 | 63,100               |
| 95                  | 64.6           | 197.9                 | 58,400               |
| 100                 | 63.1           | 195.4                 | 54,300               |
| 105                 | 61.6           | 192.8                 | 50,600               |
| 110                 | 60.0           | 190.0                 | 47,300               |
| 115                 | 58.4           | 187.0                 | 44,300               |
| 120                 | 56.8           | 183.9                 | 41,600               |
| 125                 | 55.2           | 180.5                 | 39,100               |
| 130                 | 53.5           | 176.9                 | 36,800               |
| 135                 | 51.8           | 173.1                 | 34,700               |
| 140                 | 50.0           | 169.0                 | 32,800               |
| 145                 | 48.2           | 164.7                 | 31,000               |
| 150                 | 46.3           | 160.1                 | 29,400               |
| 155                 | 44.4           | 155.1                 | 27,800               |
| 160                 | 42.4           | 149.8                 | 26,400               |
| 165                 | 40.4           | 144.2                 | 25,100               |
| 170                 | 38.2           | 138.1                 | 23,800               |
| 175                 | 36.0           | 131.4                 | 22,600               |
| 180                 | 33.6           | 124.2                 | 21,500               |
| 185                 | 31.0           | 116.3                 | 20,400               |
| 190                 | 28.2           | 107.5                 | 19,400               |
| 195                 | 25.2           | 97.6                  | 18,300 *             |
| 200                 | 21.8           | 86.1                  | 16,600 *             |
| 205                 | 17.8           | 72.2                  | 14,800 *             |



# Liftcrane Boom Capacities

Meets  
ANSI B30.5  
Requirements



**Boom No. 82LR**  
**184,600 Lb. Crane Counterweight**  
**44,000 Lb. Carbody Counterweight**  
**Rating Over End of Blocked Crawlers**  
**No Travel - Limited Swing**

## 999 SERIES 2

| Oper. Rad. Feet     | Boom Ang. Deg. | Boom Point Elev. Feet | Boom Capacity Pounds |
|---------------------|----------------|-----------------------|----------------------|
| <b>220 Ft. Boom</b> |                |                       |                      |
| 40                  | 80.8           | 225.4                 | 152,500 *            |
| 42                  | 80.3           | 225.0                 | 151,900 *            |
| 44                  | 79.8           | 224.7                 | 151,300 *            |
| 46                  | 79.3           | 224.3                 | 150,700 *            |
| 48                  | 78.7           | 223.9                 | 149,500 *            |
| 50                  | 78.2           | 223.5                 | 144,600              |
| 55                  | 76.9           | 222.4                 | 126,000              |
| 60                  | 75.5           | 221.2                 | 111,300              |
| 65                  | 74.2           | 219.8                 | 99,300               |
| 70                  | 72.8           | 218.3                 | 89,500               |
| 75                  | 71.4           | 216.7                 | 81,200               |
| 80                  | 70.1           | 215.0                 | 74,100               |
| 85                  | 68.7           | 213.1                 | 68,000               |
| 90                  | 67.3           | 211.1                 | 62,700               |
| 95                  | 65.9           | 208.9                 | 58,100               |
| 100                 | 64.4           | 206.6                 | 53,900               |
| 105                 | 63.0           | 204.1                 | 50,200               |
| 110                 | 61.5           | 201.5                 | 46,900               |
| 115                 | 60.0           | 198.7                 | 43,900               |
| 120                 | 58.5           | 195.7                 | 41,200               |
| 125                 | 56.9           | 192.5                 | 38,700               |
| 130                 | 55.4           | 189.2                 | 36,500               |
| 135                 | 53.8           | 185.6                 | 34,400               |
| 140                 | 52.1           | 181.9                 | 32,400               |
| 145                 | 50.5           | 177.9                 | 30,700               |
| 150                 | 48.8           | 173.6                 | 29,000               |
| 155                 | 47.0           | 169.1                 | 27,500               |
| 160                 | 45.2           | 164.3                 | 26,000               |
| 165                 | 43.3           | 159.1                 | 24,700               |
| 170                 | 41.4           | 153.7                 | 23,400               |
| 175                 | 39.4           | 147.8                 | 22,300               |
| 180                 | 37.3           | 141.5                 | 21,100               |
| 185                 | 35.1           | 134.6                 | 20,100               |
| 190                 | 32.8           | 127.2                 | 19,100               |
| 195                 | 30.3           | 119.1                 | 18,200               |
| 200                 | 27.6           | 110.0                 | 17,300               |
| 205                 | 24.6           | 99.8                  | 15,800 *             |
| 210                 | 21.3           | 88.0                  | 14,200 *             |
| 215                 | 17.3           | 73.7                  | 12,600 *             |

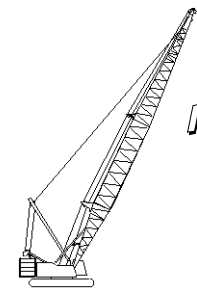
| Oper. Rad. Feet     | Boom Ang. Deg. | Boom Point Elev. Feet | Boom Capacity Pounds |
|---------------------|----------------|-----------------------|----------------------|
| <b>230 Ft. Boom</b> |                |                       |                      |
| 42                  | 80.7           | 235.2                 | 137,900 *            |
| 44                  | 80.2           | 234.8                 | 137,400 *            |
| 46                  | 79.7           | 234.5                 | 136,800 *            |
| 48                  | 79.2           | 234.1                 | 136,300 *            |
| 50                  | 78.7           | 233.7                 | 135,700 *            |
| 55                  | 77.4           | 232.7                 | 125,600              |
| 60                  | 76.2           | 231.5                 | 110,900              |
| 65                  | 74.9           | 230.2                 | 99,000               |
| 70                  | 73.6           | 228.8                 | 89,100               |
| 75                  | 72.3           | 227.2                 | 80,900               |
| 80                  | 71.0           | 225.6                 | 73,800               |
| 85                  | 69.6           | 223.8                 | 67,700               |
| 90                  | 68.3           | 221.9                 | 62,400               |
| 95                  | 67.0           | 219.8                 | 57,700               |
| 100                 | 65.6           | 217.6                 | 53,600               |
| 105                 | 64.2           | 215.3                 | 49,900               |
| 110                 | 62.8           | 212.8                 | 46,600               |
| 115                 | 61.4           | 210.1                 | 43,600               |
| 120                 | 60.0           | 207.3                 | 40,800               |
| 125                 | 58.6           | 204.4                 | 38,400               |
| 130                 | 57.1           | 201.2                 | 36,100               |
| 135                 | 55.6           | 197.9                 | 34,000               |
| 140                 | 54.1           | 194.4                 | 32,100               |
| 145                 | 52.5           | 190.6                 | 30,300               |
| 150                 | 50.9           | 186.7                 | 28,600               |
| 155                 | 49.3           | 182.5                 | 27,100               |
| 160                 | 47.6           | 178.1                 | 25,700               |
| 165                 | 45.9           | 173.4                 | 24,300               |
| 170                 | 44.2           | 168.4                 | 23,100               |
| 175                 | 42.3           | 163.1                 | 21,900               |
| 180                 | 40.5           | 157.4                 | 20,800               |
| 185                 | 38.5           | 151.3                 | 19,700               |
| 190                 | 36.5           | 144.8                 | 18,700               |
| 195                 | 34.3           | 137.8                 | 17,800               |
| 200                 | 32.0           | 130.1                 | 16,900               |
| 205                 | 29.6           | 121.7                 | 16,000               |
| 210                 | 27.0           | 112.4                 | 14,900 *             |
| 215                 | 24.1           | 102.0                 | 13,500 *             |
| 220                 | 20.8           | 89.9                  | 12,100 *             |
| 225                 | 17.0           | 75.2                  | 10,600 *             |

| Oper. Rad. Feet     | Boom Ang. Deg. | Boom Point Elev. Feet | Boom Capacity Pounds |
|---------------------|----------------|-----------------------|----------------------|
| <b>240 Ft. Boom</b> |                |                       |                      |
| 44                  | 80.6           | 245.0                 | 125,200 *            |
| 46                  | 80.2           | 244.6                 | 124,600 *            |
| 48                  | 79.7           | 244.3                 | 124,100 *            |
| 50                  | 79.2           | 243.9                 | 123,600 *            |
| 55                  | 78.0           | 242.9                 | 122,300 *            |
| 60                  | 76.8           | 241.8                 | 110,600              |
| 65                  | 75.5           | 240.5                 | 98,600               |
| 70                  | 74.3           | 239.2                 | 88,700               |
| 75                  | 73.0           | 237.7                 | 80,400               |
| 80                  | 71.8           | 236.1                 | 73,300               |
| 85                  | 70.5           | 234.4                 | 67,200               |
| 90                  | 69.3           | 232.6                 | 61,900               |
| 95                  | 68.0           | 230.6                 | 57,200               |
| 100                 | 66.7           | 228.5                 | 53,100               |
| 105                 | 65.4           | 226.3                 | 49,400               |
| 110                 | 64.1           | 224.0                 | 46,100               |
| 115                 | 62.7           | 221.5                 | 43,100               |
| 120                 | 61.4           | 218.8                 | 40,300               |
| 125                 | 60.0           | 216.0                 | 37,800               |
| 130                 | 58.6           | 213.0                 | 35,600               |
| 135                 | 57.2           | 209.9                 | 33,500               |
| 140                 | 55.8           | 206.6                 | 31,600               |
| 145                 | 54.3           | 203.1                 | 29,800               |
| 150                 | 52.8           | 199.4                 | 28,100               |
| 155                 | 51.3           | 195.5                 | 26,600               |
| 160                 | 49.8           | 191.4                 | 25,100               |
| 165                 | 48.2           | 187.0                 | 23,800               |
| 170                 | 46.6           | 182.4                 | 22,500               |
| 175                 | 44.9           | 177.6                 | 21,400               |
| 180                 | 43.2           | 172.4                 | 20,200               |
| 185                 | 41.4           | 166.9                 | 19,200               |
| 190                 | 39.6           | 161.0                 | 18,200               |
| 195                 | 37.7           | 154.8                 | 17,300               |
| 200                 | 35.7           | 148.1                 | 16,400               |
| 205                 | 33.6           | 140.8                 | 15,500               |
| 210                 | 31.3           | 133.0                 | 14,700               |
| 215                 | 29.0           | 124.3                 | 13,700 *             |
| 220                 | 26.4           | 114.8                 | 12,400 *             |
| 225                 | 23.6           | 104.1                 | 11,100 *             |
| 230                 | 20.4           | 91.7                  | 9,800 *              |
| 235                 | 16.6           | 76.7                  | 8,400 *              |



# Liftcrane Boom Capacities

Meets  
**ANSI B30.5**  
Requirements



**Boom No. 82LR**  
**184,600 Lb. Crane Counterweight**  
**44,000 Lb. Carbody Counterweight**  
**Rating Over End of Blocked Crawlers**  
**No Travel - Limited Swing**

## 999 SERIES 2

| Oper. Rad. Feet     | Boom Ang. Deg. | Boom Point Elev. Feet | Boom Capacity Pounds |
|---------------------|----------------|-----------------------|----------------------|
| <b>250 Ft. Boom</b> |                |                       |                      |
| 44                  | 81.0           | 255.1                 | 113,800 *            |
| 46                  | 80.6           | 254.8                 | 113,300 *            |
| 48                  | 80.1           | 254.4                 | 112,900 *            |
| 50                  | 79.6           | 254.1                 | 112,400 *            |
| 55                  | 78.5           | 253.1                 | 111,200 *            |
| 60                  | 77.3           | 252.0                 | 110,100 *            |
| 65                  | 76.1           | 250.8                 | 98,200               |
| 70                  | 74.9           | 249.6                 | 88,400               |
| 75                  | 73.7           | 248.2                 | 80,100               |
| 80                  | 72.5           | 246.6                 | 73,000               |
| 85                  | 71.3           | 245.0                 | 66,900               |
| 90                  | 70.1           | 243.3                 | 61,500               |
| 95                  | 68.9           | 241.4                 | 56,800               |
| 100                 | 67.7           | 239.4                 | 52,700               |
| 105                 | 66.4           | 237.3                 | 49,000               |
| 110                 | 65.2           | 235.0                 | 45,700               |
| 115                 | 63.9           | 232.7                 | 42,700               |
| 120                 | 62.6           | 230.1                 | 39,900               |
| 125                 | 61.3           | 227.5                 | 37,400               |
| 130                 | 60.0           | 224.7                 | 35,200               |
| 135                 | 58.7           | 221.7                 | 33,100               |
| 140                 | 57.3           | 218.6                 | 31,200               |
| 145                 | 55.9           | 215.3                 | 29,400               |
| 150                 | 54.5           | 211.8                 | 27,700               |
| 155                 | 53.1           | 208.2                 | 26,200               |
| 160                 | 51.7           | 204.3                 | 24,700               |
| 165                 | 50.2           | 200.2                 | 23,400               |
| 170                 | 48.7           | 196.0                 | 22,100               |
| 175                 | 47.2           | 191.5                 | 21,000               |
| 180                 | 45.6           | 186.7                 | 19,800               |
| 185                 | 43.9           | 181.6                 | 18,800               |
| 190                 | 42.3           | 176.3                 | 17,800               |
| 195                 | 40.5           | 170.6                 | 16,900               |
| 200                 | 38.7           | 164.6                 | 16,000               |
| 205                 | 36.9           | 158.2                 | 15,100               |
| 210                 | 34.9           | 151.2                 | 14,300               |
| 215                 | 32.9           | 143.8                 | 13,600               |
| 220                 | 30.7           | 135.7                 | 12,700 *             |
| 225                 | 28.4           | 126.9                 | 11,500 *             |
| 230                 | 25.8           | 117.1                 | 10,300 *             |
| 235                 | 23.1           | 106.1                 | 9,100 *              |
| 240                 | 19.9           | 93.4                  | 7,900 *              |
| 245                 | 16.3           | 78.2                  | 6,600 *              |

| Oper. Rad. Feet     | Boom Ang. Deg. | Boom Point Elev. Feet | Boom Capacity Pounds |
|---------------------|----------------|-----------------------|----------------------|
| <b>260 Ft. Boom</b> |                |                       |                      |
| 46                  | 80.9           | 264.9                 | 103,700 *            |
| 48                  | 80.5           | 264.6                 | 103,300 *            |
| 50                  | 80.0           | 264.2                 | 102,800 *            |
| 55                  | 78.9           | 263.3                 | 101,700 *            |
| 60                  | 77.8           | 262.3                 | 100,600 *            |
| 65                  | 76.7           | 261.1                 | 97,900               |
| 70                  | 75.5           | 259.9                 | 88,000               |
| 75                  | 74.4           | 258.6                 | 79,700               |
| 80                  | 73.2           | 257.1                 | 72,600               |
| 85                  | 72.1           | 255.5                 | 66,500               |
| 90                  | 70.9           | 253.9                 | 61,100               |
| 95                  | 69.7           | 252.1                 | 56,500               |
| 100                 | 68.6           | 250.2                 | 52,300               |
| 105                 | 67.4           | 248.2                 | 48,600               |
| 110                 | 66.2           | 246.0                 | 45,300               |
| 115                 | 65.0           | 243.7                 | 42,300               |
| 120                 | 63.7           | 241.3                 | 39,500               |
| 125                 | 62.5           | 238.8                 | 37,000               |
| 130                 | 61.3           | 236.1                 | 34,800               |
| 135                 | 60.0           | 233.3                 | 32,700               |
| 140                 | 58.7           | 230.4                 | 30,800               |
| 145                 | 57.4           | 227.2                 | 29,000               |
| 150                 | 56.1           | 224.0                 | 27,300               |
| 155                 | 54.8           | 220.5                 | 25,800               |
| 160                 | 53.4           | 216.9                 | 24,300               |
| 165                 | 52.0           | 213.1                 | 23,000               |
| 170                 | 50.6           | 209.1                 | 21,700               |
| 175                 | 49.2           | 204.9                 | 20,600               |
| 180                 | 47.7           | 200.4                 | 19,400               |
| 185                 | 46.2           | 195.8                 | 18,400               |
| 190                 | 44.6           | 190.8                 | 17,400               |
| 195                 | 43.0           | 185.6                 | 16,500               |
| 200                 | 41.4           | 180.1                 | 15,600               |
| 205                 | 39.7           | 174.3                 | 14,700               |
| 210                 | 38.0           | 168.1                 | 13,900               |
| 215                 | 36.1           | 161.4                 | 13,200               |
| 220                 | 34.2           | 154.4                 | 12,400               |
| 225                 | 32.2           | 146.7                 | 11,600 *             |
| 230                 | 30.1           | 138.4                 | 10,500 *             |
| 235                 | 27.8           | 129.4                 | 9,400 *              |
| 240                 | 25.3           | 119.4                 | 8,300 *              |
| 245                 | 22.6           | 108.2                 | 7,100 *              |
| 250                 | 19.6           | 95.2                  | 6,000 *              |
| 255                 | 15.9           | 79.6                  | 4,800 *              |

| Oper. Rad. Feet     | Boom Ang. Deg. | Boom Point Elev. Feet | Boom Capacity Pounds |
|---------------------|----------------|-----------------------|----------------------|
| <b>270 Ft. Boom</b> |                |                       |                      |
| 48                  | 80.8           | 274.7                 | 94,900 *             |
| 50                  | 80.4           | 274.4                 | 94,400 *             |
| 55                  | 79.3           | 273.5                 | 93,400 *             |
| 60                  | 78.2           | 272.5                 | 92,300 *             |
| 65                  | 77.2           | 271.4                 | 91,300 *             |
| 70                  | 76.1           | 270.2                 | 87,600               |
| 75                  | 75.0           | 268.9                 | 79,300               |
| 80                  | 73.9           | 267.5                 | 72,200               |
| 85                  | 72.8           | 266.0                 | 66,100               |
| 90                  | 71.7           | 264.4                 | 60,800               |
| 95                  | 70.5           | 262.7                 | 56,100               |
| 100                 | 69.4           | 260.9                 | 51,900               |
| 105                 | 68.3           | 259.0                 | 48,200               |
| 110                 | 67.1           | 256.9                 | 44,900               |
| 115                 | 66.0           | 254.7                 | 41,900               |
| 120                 | 64.8           | 252.4                 | 39,100               |
| 125                 | 63.6           | 250.0                 | 36,600               |
| 130                 | 62.4           | 247.5                 | 34,400               |
| 135                 | 61.2           | 244.8                 | 32,300               |
| 140                 | 60.0           | 242.0                 | 30,300               |
| 145                 | 58.8           | 239.0                 | 28,600               |
| 150                 | 57.5           | 235.9                 | 26,900               |
| 155                 | 56.3           | 232.7                 | 25,400               |
| 160                 | 55.0           | 229.2                 | 23,900               |
| 165                 | 53.7           | 225.6                 | 22,600               |
| 170                 | 52.3           | 221.9                 | 21,300               |
| 175                 | 51.0           | 217.9                 | 20,100               |
| 180                 | 49.6           | 213.8                 | 19,000               |
| 185                 | 48.2           | 209.4                 | 18,000               |
| 190                 | 46.7           | 204.8                 | 17,000               |
| 195                 | 45.3           | 200.0                 | 16,100               |
| 200                 | 43.8           | 194.9                 | 15,200               |
| 205                 | 42.2           | 189.5                 | 14,300               |
| 210                 | 40.6           | 183.9                 | 13,500               |
| 215                 | 38.9           | 177.9                 | 12,800               |
| 220                 | 37.2           | 171.5                 | 12,000               |
| 225                 | 35.4           | 164.7                 | 11,300               |
| 230                 | 33.6           | 157.4                 | 10,500 *             |
| 235                 | 31.6           | 149.6                 | 9,500 *              |
| 240                 | 29.5           | 141.1                 | 8,400 *              |
| 245                 | 27.3           | 131.8                 | 7,400 *              |
| 250                 | 24.9           | 121.6                 | 6,400 *              |
| 255                 | 22.2           | 110.1                 | 5,300 *              |
| 260                 | 19.2           | 96.9                  | 4,300 *              |



# Liftcrane Boom Capacities

Meets  
ANSI B30.5  
Requirements

**Boom No. 82LR**  
**184,600 Lb. Crane Counterweight**  
**44,000 Lb. Carbody Counterweight**  
**Rating Over End of Blocked Crawlers**  
**No Travel - Limited Swing**

## 999 SERIES 2

| Oper. Rad. Feet     | Boom Ang. Deg. | Boom Point Elev. Feet | Boom Capacity Pounds |
|---------------------|----------------|-----------------------|----------------------|
| <b>280 Ft. Boom</b> |                |                       |                      |
| 50                  | 80.8           | 284.5                 | 85,600 *             |
| 55                  | 79.7           | 283.7                 | 84,700 *             |
| 60                  | 78.7           | 282.7                 | 83,700 *             |
| 65                  | 77.6           | 281.6                 | 82,800 *             |
| 70                  | 76.6           | 280.5                 | 81,800 *             |
| 75                  | 75.5           | 279.3                 | 78,900               |
| 80                  | 74.5           | 277.9                 | 71,800               |
| 85                  | 73.4           | 276.5                 | 65,600               |
| 90                  | 72.3           | 274.9                 | 60,300               |
| 95                  | 71.3           | 273.3                 | 55,600               |
| 100                 | 70.2           | 271.5                 | 51,400               |
| 105                 | 69.1           | 269.7                 | 47,700               |
| 110                 | 68.0           | 267.7                 | 44,400               |
| 115                 | 66.9           | 265.6                 | 41,400               |
| 120                 | 65.8           | 263.4                 | 38,600               |
| 125                 | 64.6           | 261.1                 | 36,100               |
| 130                 | 63.5           | 258.7                 | 33,900               |
| 135                 | 62.3           | 256.1                 | 31,800               |
| 140                 | 61.2           | 253.5                 | 29,800               |
| 145                 | 60.0           | 250.6                 | 28,000               |
| 150                 | 58.8           | 247.7                 | 26,400               |
| 155                 | 57.6           | 244.6                 | 24,800               |
| 160                 | 56.4           | 241.3                 | 23,400               |
| 165                 | 55.2           | 237.9                 | 22,100               |
| 170                 | 53.9           | 234.4                 | 20,800               |
| 175                 | 52.6           | 230.6                 | 19,600               |
| 180                 | 51.3           | 226.7                 | 18,500               |
| 185                 | 50.0           | 222.6                 | 17,400               |
| 190                 | 48.6           | 218.3                 | 16,400               |
| 195                 | 47.3           | 213.8                 | 15,500               |
| 200                 | 45.9           | 209.1                 | 14,600               |
| 205                 | 44.4           | 204.1                 | 13,800               |
| 210                 | 42.9           | 198.9                 | 13,000               |
| 215                 | 41.4           | 193.4                 | 12,200               |
| 220                 | 39.8           | 187.5                 | 11,500               |
| 225                 | 38.2           | 181.4                 | 10,800               |
| 230                 | 36.5           | 174.8                 | 10,100               |
| 235                 | 34.8           | 167.8                 | 9,300 *              |
| 240                 | 32.9           | 160.4                 | 8,200 *              |
| 245                 | 31.0           | 152.4                 | 7,200 *              |
| 250                 | 29.0           | 143.7                 | 6,300 *              |
| 255                 | 26.8           | 134.2                 | 5,300 *              |
| 260                 | 24.4           | 123.8                 | 4,400 *              |

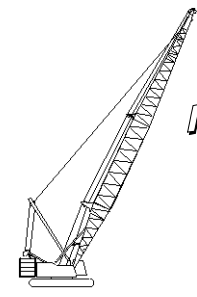
| Oper. Rad. Feet     | Boom Ang. Deg. | Boom Point Elev. Feet | Boom Capacity Pounds |
|---------------------|----------------|-----------------------|----------------------|
| <b>290 Ft. Boom</b> |                |                       |                      |
| 55                  | 80.1           | 293.8                 | 77,900 *             |
| 60                  | 79.1           | 292.9                 | 77,000 *             |
| 65                  | 78.1           | 291.9                 | 76,100 *             |
| 70                  | 77.0           | 290.8                 | 75,100 *             |
| 75                  | 76.0           | 289.6                 | 74,200 *             |
| 80                  | 75.0           | 288.3                 | 71,400               |
| 85                  | 74.0           | 286.9                 | 65,200               |
| 90                  | 73.0           | 285.4                 | 59,900               |
| 95                  | 71.9           | 283.8                 | 55,200               |
| 100                 | 70.9           | 282.2                 | 51,000               |
| 105                 | 69.8           | 280.4                 | 47,300               |
| 110                 | 68.8           | 278.5                 | 44,000               |
| 115                 | 67.7           | 276.5                 | 40,900               |
| 120                 | 66.6           | 274.4                 | 38,200               |
| 125                 | 65.6           | 272.2                 | 35,700               |
| 130                 | 64.5           | 269.8                 | 33,400               |
| 135                 | 63.4           | 267.4                 | 31,300               |
| 140                 | 62.3           | 264.8                 | 29,400               |
| 145                 | 61.1           | 262.1                 | 27,600               |
| 150                 | 60.0           | 259.3                 | 25,900               |
| 155                 | 58.9           | 256.3                 | 24,400               |
| 160                 | 57.7           | 253.3                 | 23,000               |
| 165                 | 56.5           | 250.0                 | 21,600               |
| 170                 | 55.3           | 246.6                 | 20,400               |
| 175                 | 54.1           | 243.1                 | 19,200               |
| 180                 | 52.9           | 239.4                 | 18,100               |
| 185                 | 51.6           | 235.5                 | 17,000               |
| 190                 | 50.4           | 231.5                 | 16,000               |
| 195                 | 49.1           | 227.2                 | 15,100               |
| 200                 | 47.7           | 222.8                 | 14,200               |
| 205                 | 46.4           | 218.2                 | 13,300               |
| 210                 | 45.0           | 213.3                 | 12,500               |
| 215                 | 43.6           | 208.2                 | 11,800               |
| 220                 | 42.2           | 202.8                 | 11,100               |
| 225                 | 40.7           | 197.1                 | 10,400               |
| 230                 | 39.1           | 191.1                 | 9,700                |
| 235                 | 37.5           | 184.8                 | 9,100                |
| 240                 | 35.9           | 178.1                 | 8,200 *              |
| 245                 | 34.1           | 170.9                 | 7,200 *              |
| 250                 | 32.3           | 163.3                 | 6,300 *              |
| 255                 | 30.5           | 155.1                 | 5,300 *              |
| 260                 | 28.4           | 146.3                 | 4,400 *              |

| Oper. Rad. Feet     | Boom Ang. Deg. | Boom Point Elev. Feet | Boom Capacity Pounds |
|---------------------|----------------|-----------------------|----------------------|
| <b>300 Ft. Boom</b> |                |                       |                      |
| 55                  | 80.4           | 304.0                 | 71,600 *             |
| 60                  | 79.4           | 303.1                 | 70,700 *             |
| 65                  | 78.5           | 302.1                 | 69,800 *             |
| 70                  | 77.5           | 301.0                 | 68,900 *             |
| 75                  | 76.5           | 299.9                 | 68,100 *             |
| 80                  | 75.5           | 298.6                 | 67,200 *             |
| 85                  | 74.5           | 297.3                 | 64,800               |
| 90                  | 73.5           | 295.9                 | 59,500               |
| 95                  | 72.5           | 294.3                 | 54,800               |
| 100                 | 71.5           | 292.7                 | 50,600               |
| 105                 | 70.5           | 291.0                 | 46,900               |
| 110                 | 69.5           | 289.2                 | 43,500               |
| 115                 | 68.5           | 287.3                 | 40,500               |
| 120                 | 67.5           | 285.2                 | 37,800               |
| 125                 | 66.4           | 283.1                 | 35,300               |
| 130                 | 65.4           | 280.9                 | 33,000               |
| 135                 | 64.3           | 278.5                 | 30,900               |
| 140                 | 63.3           | 276.1                 | 29,000               |
| 145                 | 62.2           | 273.5                 | 27,200               |
| 150                 | 61.1           | 270.8                 | 25,500               |
| 155                 | 60.0           | 268.0                 | 24,000               |
| 160                 | 58.9           | 265.0                 | 22,500               |
| 165                 | 57.8           | 261.9                 | 21,200               |
| 170                 | 56.6           | 258.7                 | 19,900               |
| 175                 | 55.5           | 255.3                 | 18,700               |
| 180                 | 54.3           | 251.8                 | 17,600               |
| 185                 | 53.1           | 248.2                 | 16,600               |
| 190                 | 51.9           | 244.3                 | 15,600               |
| 195                 | 50.7           | 240.3                 | 14,600               |
| 200                 | 49.5           | 236.1                 | 13,800               |
| 205                 | 48.2           | 231.8                 | 12,900               |
| 210                 | 46.9           | 227.2                 | 12,100               |
| 215                 | 45.6           | 222.4                 | 11,300               |
| 220                 | 44.2           | 217.4                 | 10,600               |
| 225                 | 42.8           | 212.1                 | 9,900                |
| 230                 | 41.4           | 206.6                 | 9,300                |
| 235                 | 39.9           | 200.8                 | 8,600                |
| 240                 | 38.4           | 194.6                 | 8,000 *              |
| 245                 | 36.9           | 188.2                 | 7,000 *              |
| 250                 | 35.2           | 181.3                 | 6,100 *              |
| 255                 | 33.6           | 174.0                 | 5,200 *              |
| 260                 | 31.8           | 166.2                 | 4,400 *              |



# Liftcrane Boom Capacities

Meets  
ANSI B30.5  
Requirements



**Boom No. 82LR**  
**184,600 Lb. Crane Counterweight**  
**44,000 Lb. Carbody Counterweight**  
**Rating Over End of Blocked Crawlers**  
**No Travel - Limited Swing**

## 999 SERIES 2

| Oper. Rad. Feet     | Boom Ang. Deg. | Boom Point Elev. Feet | Boom Capacity Pounds |
|---------------------|----------------|-----------------------|----------------------|
| <b>310 Ft. Boom</b> |                |                       |                      |
| 55                  | 80.7           | 314.1                 | 70,500 *             |
| 60                  | 79.8           | 313.2                 | 69,700 *             |
| 65                  | 78.8           | 312.3                 | 69,000 *             |
| 70                  | 77.9           | 311.3                 | 66,000 *             |
| 75                  | 76.9           | 310.1                 | 62,900 *             |
| 80                  | 76.0           | 308.9                 | 58,000               |
| 85                  | 75.0           | 307.7                 | 52,900               |
| 90                  | 74.1           | 306.3                 | 48,400               |
| 95                  | 73.1           | 304.8                 | 44,500               |
| 100                 | 72.2           | 303.2                 | 41,000               |
| 105                 | 71.2           | 301.6                 | 37,900               |
| 110                 | 70.2           | 299.8                 | 35,000               |
| 115                 | 69.2           | 298.0                 | 32,500               |
| 120                 | 68.2           | 296.0                 | 30,200               |
| 125                 | 67.2           | 294.0                 | 28,000               |
| 130                 | 66.2           | 291.8                 | 26,100               |
| 135                 | 65.2           | 289.6                 | 24,300               |
| 140                 | 64.2           | 287.2                 | 22,700               |
| 145                 | 63.2           | 284.7                 | 21,100               |
| 150                 | 62.1           | 282.2                 | 19,700               |
| 155                 | 61.1           | 279.4                 | 18,400               |
| 160                 | 60.0           | 276.6                 | 17,200               |
| 165                 | 58.9           | 273.7                 | 16,000               |
| 170                 | 57.8           | 270.6                 | 14,900               |
| 175                 | 56.7           | 267.4                 | 13,900               |
| 180                 | 55.6           | 264.0                 | 12,900               |
| 185                 | 54.5           | 260.5                 | 12,000               |
| 190                 | 53.4           | 256.9                 | 11,200               |
| 195                 | 52.2           | 253.1                 | 10,400               |
| 200                 | 51.0           | 249.1                 | 9,600                |
| 205                 | 49.8           | 245.0                 | 8,900                |
| 210                 | 48.6           | 240.7                 | 8,200                |
| 215                 | 47.4           | 236.2                 | 7,500                |
| 220                 | 46.1           | 231.5                 | 6,900                |
| 225                 | 44.8           | 226.6                 | 6,300                |
| 230                 | 43.5           | 221.4                 | 5,700                |
| 235                 | 42.1           | 216.0                 | 5,200                |
| 240                 | 40.7           | 210.3                 | 4,600                |
| 245                 | 39.3           | 204.4                 | 4,100                |

| Oper. Rad. Feet     | Boom Ang. Deg. | Boom Point Elev. Feet | Boom Capacity Pounds |
|---------------------|----------------|-----------------------|----------------------|
| <b>320 Ft. Boom</b> |                |                       |                      |
| 55                  | 81.0           | 324.2                 | 65,300 *             |
| 60                  | 80.1           | 323.4                 | 64,600 *             |
| 65                  | 79.2           | 322.5                 | 63,800 *             |
| 70                  | 78.3           | 321.5                 | 63,100 *             |
| 75                  | 77.4           | 320.4                 | 60,600 *             |
| 80                  | 76.4           | 319.2                 | 57,500               |
| 85                  | 75.5           | 318.0                 | 52,400               |
| 90                  | 74.6           | 316.7                 | 47,900               |
| 95                  | 73.7           | 315.2                 | 44,000               |
| 100                 | 72.7           | 313.7                 | 40,500               |
| 105                 | 71.8           | 312.1                 | 37,400               |
| 110                 | 70.8           | 310.4                 | 34,500               |
| 115                 | 69.9           | 308.7                 | 32,000               |
| 120                 | 68.9           | 306.8                 | 29,700               |
| 125                 | 68.0           | 304.8                 | 27,500               |
| 130                 | 67.0           | 302.7                 | 25,600               |
| 135                 | 66.0           | 300.6                 | 23,800               |
| 140                 | 65.0           | 298.3                 | 22,100               |
| 145                 | 64.1           | 295.9                 | 20,600               |
| 150                 | 63.1           | 293.4                 | 19,200               |
| 155                 | 62.0           | 290.8                 | 17,900               |
| 160                 | 61.0           | 288.1                 | 16,600               |
| 165                 | 60.0           | 285.3                 | 15,500               |
| 170                 | 59.0           | 282.3                 | 14,400               |
| 175                 | 57.9           | 279.3                 | 13,400               |
| 180                 | 56.8           | 276.1                 | 12,400               |
| 185                 | 55.8           | 272.7                 | 11,500               |
| 190                 | 54.7           | 269.3                 | 10,600               |
| 195                 | 53.6           | 265.6                 | 9,800                |
| 200                 | 52.5           | 261.9                 | 9,100                |
| 205                 | 51.3           | 258.0                 | 8,300                |
| 210                 | 50.2           | 253.9                 | 7,600                |
| 215                 | 49.0           | 249.6                 | 7,000                |
| 220                 | 47.8           | 245.2                 | 6,300                |
| 225                 | 46.6           | 240.5                 | 5,700                |
| 230                 | 45.3           | 235.7                 | 5,200                |
| 235                 | 44.0           | 230.6                 | 4,600                |
| 240                 | 42.7           | 225.4                 | 4,100                |