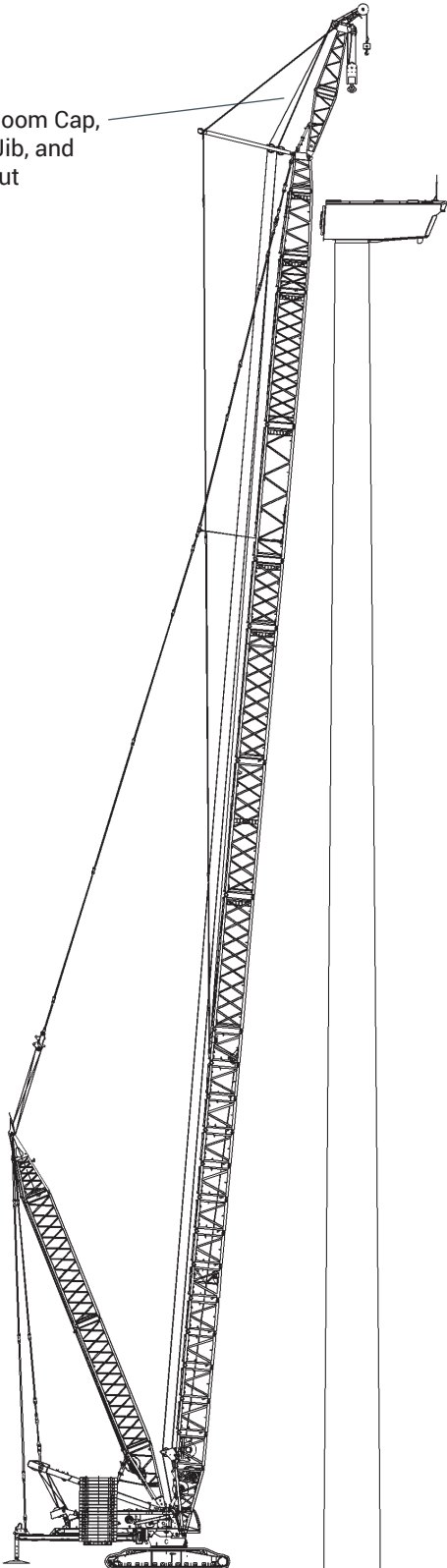




MLC650

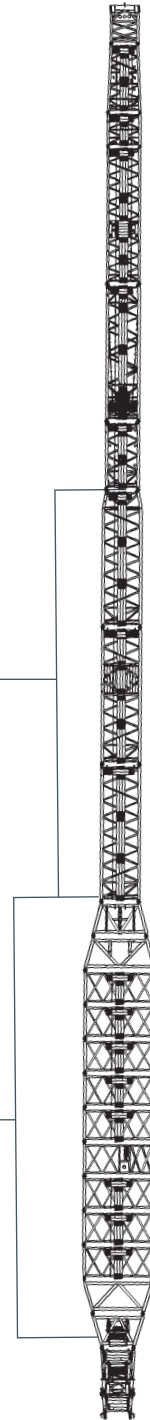
6 METER WIDE BOOM

NEW Boom Cap,
Fixed Jib, and
Jib Strut



Existing inserts from
3.5 m Wide Boom Kit

NEW 6 m
Wide Boom Kit



MLC650 6 METER WIDE BOOM

Fixed Jib FJ10 on Boom B90

- Utilizes the new 488 kip (220 mt) No. 687 fixed jib assembly along with the new No. 682 boom cap and the new No. 686 6m wide boom inserts for larger 100m and higher wind turbine orientated work
- Fixed jib length 39.4 ft - 98.4 ft (12 m - 30 m) with offsets of 10, 15 and 20 degrees
- Fixed jib suspension utilizes synthetic pendants for ease of assembly and handling while reducing weight to maximize capacity
- Boom lengths 255.9 ft - 492.1 ft (78 m - 150 m)
- Load block features wide sheave spacing to reduce block spin and optional cheek weights to adjust overhaul weight

Boom B68 and Luffing Jib LJ11

- Main boom configurations utilizing No. 686 6m wide boom inserts will be available
- Main boom configurations will use standard No. 680 boom top
- Luffing jib configurations for use on the main boom with No. 686 6m wide boom inserts will be available
- Luffing jib configurations will be similar to luffing jib configurations used with existing 3.5m wide boom B65



Tower Height	MLC650 Existing 3.5m Wide Boom Capacities	MLC650 6m Wide Boom Target Capacities	MLC650 6m Wide Boom Configurations Boom Length + Fixed Jib Length
105 m	341.6 kip (154.9 mt)	480 kip (217 mt)	364.2 ft + 39.4 ft (111 m + 12 m)
120 m	320.8 kip (145.5 mt)	430 kip (195 mt)	403.5 ft + 39.4 ft (123 m + 12 m)
140 m	219.3 kip (99.5 mt)	310 kip (140 mt)	472.4 ft + 39.4 ft (144 m + 12 m)

