



### New offer for safety device

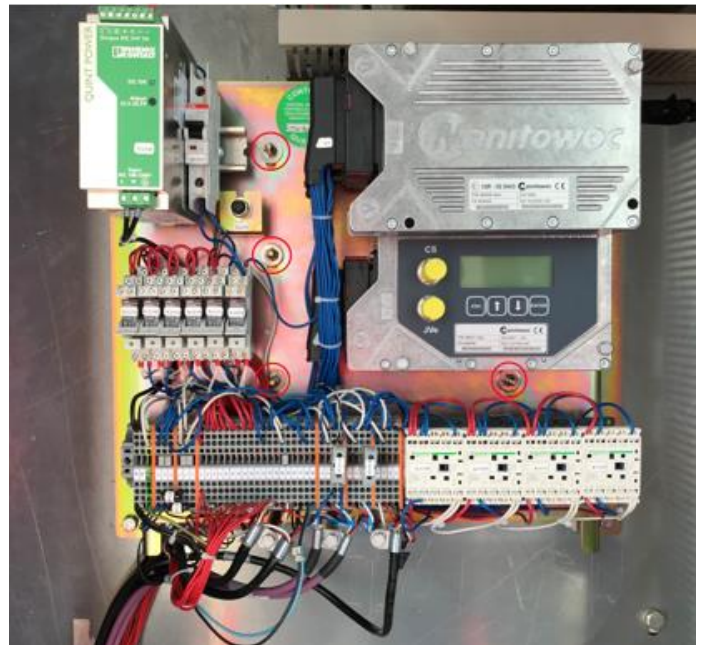
### Legacy MRxx5 range

**Replace your old overload system with the new generation of safety device, with the following advantages :**

- *Commissioning faster and easier (15 min instead of 4 hours),*
- *M2M on the new TCU for diagnosis (display on the block),*
- *Possibility to downgrade the load curve or the moment,*
- *Safety improved by using a computer SIL2 (Safety level PLC according to EN13849 standard),*
- *Using components of our new MRxx8 range to improve your spare parts management.*

### New system

### Old system



**Contact us to get the list of parts.**