

Manitowoc 18000

Product Guide

ASME B30.5

Metric / Imperial



Features

- 750 t (825 USt) capacity No. 55A boom with MAX-ER®
- 600 t (660 USt) capacity No. 55 boom
- 9 098 mton-m (65,505 ft-kips) maximum load moment with MAX-ER®
- 97,5 m (320 ft) No. 55 boom
- 149,3 m (490 ft) No. 79A luffing jib on No. 55 boom
- 447 kW (600 HP) engine

Features

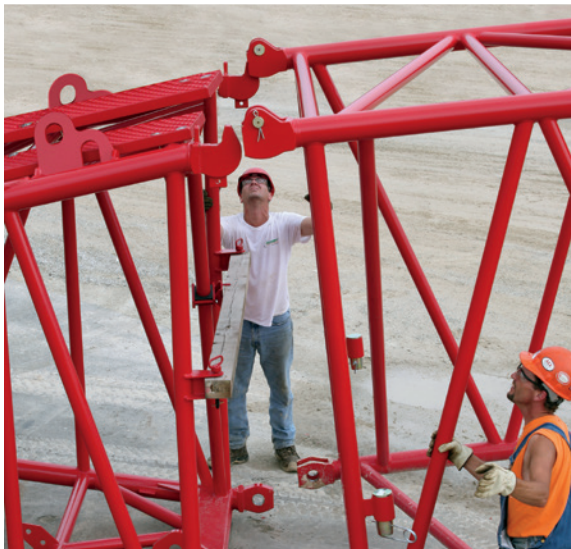
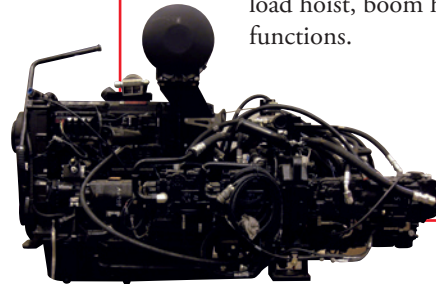


EPIC®

Manitowoc's field-proven Electronically Processed Independent Controls (EPIC) system delivers high productivity and precise load control by instantly matching a crane's commands to the crane function. EPIC's microprocessor maximizes a Manitowoc crane's function capability and simplifies servicing by pinpointing any problem in the crane's engine, power transmission and other operating systems. In addition, EPIC increases versatility by easily tailoring a Manitowoc crane's operation for specialized applications, with or without attachments. EPIC is a key reason no other crane can match the performance and reliability of Manitowoc.

Hydraulics

Our closed-loop system provides a separate hydraulic circuit to power each crane function. The result is independent, variable-speed operation of the swing, load hoist, boom hoist and travel functions.



FACT™ Connectors

Manitowoc's Fast Aligning Connection Technology (FACT) automatically aligns crane components for fast, easy assembly.

CraneSTAR

CraneSTAR is an asset management system that helps improve your profitability and reduce costs by remotely monitoring critical crane data. Visit www.cranestar.com for more information.



Crawler Drive Shafts

These eliminate the need to disconnect hydraulic systems for shipment—simplifying crawler removal and assembly.

Contents

Specifications	4
Outline dimensions	9
Crane assembly	15
Performance data	18
Boom combinations	25
Boom range / load charts	28
Upper boom point range / load charts	32
Fixed Jib range / load charts	34
Luffing jib range / load charts	37
MAX-ER® complete information	45
Manitowoc Crane Care	60

Specifications

Upperworks



Engine

Cummins QSX15-C500, Tier 4i / 3b diesel, rated 600 HP (447 kW) at 1800 RPM governed RPM.

Or

Cummins QSX15-C500, Tier 3 diesel, rated 600 HP (447 kW) at 1800 RPM

Required for equipment sold outside of the USA, Canada, and Europe

Includes engine block heater (120V), ether starting aid, transmission disconnect clutch for cold weather starting, high silencing muffler, hydraulic oil cooler, radiator and fan.

Multiple hydraulic pump drive transmission provides independent power for all machine functions.

12 volt maintenance-free batteries, 24 volt system and 75 amp alternator.

1 040 l (275 gal.), diesel fuel tank with level indicator in operator's cab.

➤ Optional: Cold-weather package with heater for fluids, batteries and computer display.



Controls

Modulating electronic-over-hydraulic controls provide infinite speed response directly proportional to control lever movement. Controls include Manitowoc's exclusive EPIC® (Electronically Processed Independent Control) system with CAN-BUS technology providing microprocessor driven control logic, pump control, on-board diagnostics, and service information.

Block-up limit control is standard for hoist and whip lines.

Integrated Load Moment Indicator system (LMI) offers standard load link for main boom and upper boom point. "Function cut-out" or "warning only" operation is selected via the Operator Interface Display on the LMI console.

Anemometer, travel and swing alarms are standard.



Hydraulic system

Multiple high-pressure piston pumps, driven by a multi-pump transmission, provide independent closed-loop hydraulic power for the hoisting drums, boom hoist, swing, left crawler and right crawler.

1 188 liter (314 gal.) Hydraulic reservoir is equipped with a breather, clean out access, and internal diffuser.

Each function is equipped with relief valves to protect the hydraulic circuit from overload or shock.

System includes oil cooler and replaceable, ten-micron absolute full flow filter. All oil is filtered before entering the hydraulic pumps.

Hydraulic system also includes pump transmission disconnect and hydraulic oil cooler.



Drums

Basic machine is equipped with one (No. 55/79A Boom) or two (No. 55 or No. 55A Boom) 124,8 cm (49-1/8") wide, 64,5 cm (25-3/8") diameter hoist drums, one in the 3,0 m (10') boom insert and one in the boom butt. Each end of each drum is driven by a variable-displacement hydraulic motor through a planetary reduction. Each drum drive is equipped with a bi-directional drum brake. Whip drum is 82,2 cm (32-3/8") wide and 64,1 cm (25-1/4") diameter, grooved for 28 mm wire rope and driven by a variable-displacement hydraulic motor through a planetary reduction. Drum rotation indicator for each drum is standard. Bolt-on (shell-type) 124,8 cm (49-1/8") laggings for 28 mm or 32 mm dia. wire rope for liftcrane applications.



Swing system

Bearing adapter-mounted independent swing is powered by a fixed-displacement hydraulic motor coupled to an internal brake and planetary reduction.

Two swing drives required for standard machine configuration. Four swing drives required for MAX-ER®.

Swing system maximum speed: 1.2 rpm.

Specifications



Mast hoist system

Single drum mast hoist mounted in rotating bed is powered by a fixed displacement hydraulic motor and a planetary reduction gear box with internal brake. Ratcheting pawl is standard.



Boom hoist system

Independent boom hoist, mounted in the mast butt has grooved drum 1 168 mm (46") wide and 1 355 mm (53-3/8") diameter.

Each end of drum is powered by a variable-displacement hydraulic motor coupled to a planetary reduction gearbox with internal brake. Ratcheting pawl, rotation indicator, pressure roller and wire rope for 16-part boom hoist line are standard.

Boom hoist speed: raise 121,9 m (400') No. 55/79A main boom from 0°- 82° in 6 minutes, 6 seconds. Raise 97,5 m (320') No. 55 main boom from 0°- 82° in 6 minutes, 18 seconds.



Boom support system

Moving Mast

Moving mast is 9,1m (30') long and connects to the fixed mast suspension rigging. When used with the optional self-erect package, the mast is utilized for crane assembly and disassembly. It is capable of lifting and positioning the crawler assemblies.

Fixed Mast

Stationary No. 56 lattice mast provides geometry to raise and support all boom lengths. 30,5 m (100') mast standard for basic crane; 42,7 m (140') mast required for MAX-ER® applications. Boom-hoist rope reeved from drum in mast butt through sheaves in mast top and boom-hoist equalizer forms 16-part boom-hoist rigging. High-strength steel straps connect equalizer to boom top.

Cushioned boom stop and automatic boom stop are standard.



Counterweight

Qty.	Item	Unit Weight		Total Weight	
		kg	lb	kg	lb
6 2	Carbody Lower Box Tray	19 958	44,000	119 748	264 000
		12 700	28,000	25 400	56,000
Carbody total				145 150	320,000
28 2	Upperworks Upper Box Tray	8 165	18,000	228 615	504,000
		5 443	12,000	10,886	24,000
Upperworks total				239 497	528,000
Counterweight Total				384 647	848,000

Includes connecting pins, brackets, and stops.



Vision operator's cab

The Vision Cab™ is a fully enclosed and insulated galvanized steel module mounted to the left front corner of rotating bed. Module is equipped with power tilt, sliding door, large safety glass windows on all sides and roof. Signal horn, power seat, all season climate control package, front and roof windshield wipers, dome light, sun visor and shade, fire extinguisher, swing and travel alarms, and radio/CD player are standard equipment. Operator's station swings over front of rotating bed for transportation.

Lowerworks



Carbody

Connects rotating bed and crawler frames. Fabricated steel rotating bed lower module mounts to single-piece carbody by a 3 m (9' 10") diameter triple-row roller bearing turntable. Each crawler frame is mounted to the carbody with FACT™ connection system power-actuated pins. Crawler drive motors are mounted on carbody, permitting crawler removal without opening travel drive hydraulic circuit.



Crawlers

Crawler assemblies are 11,81 m (38' 9") long with 1,52 m (5') wide cast steel crawler pads and lubricated intermediate rollers. Each crawler is powered independently by two variable displacement hydraulic motors and includes two hydraulically powered pin actuators for fast installation and removal from carbody. Carbody mounted drive motors are connected to crawler final reduction via drive shafts. Crawlers provide ample tractive effort allowing counter-rotation with full rated load.

Maximum ground speed is 1,1 kph (0.7 mph).

Specifications

Attachments

No. 55-79A boom

The liftcrane is equipped with a 36,6 m (120') No. 55/79A tubular-chord boom consisting of a 6,1 m (20') No. 55 or No. 55A butt, 3,0 m (10') No. 55 or No. 55A insert, 6,1 m (20') No. 55 or No. 55A insert, 12,2 m (40') No. 55/79 transition insert with equalizer platform, and 9,1 m (30') No. 79A heavy-lift top with sixteen 762 mm (30") diameter roller bearing sheaves on one shaft. Includes rope guides, boom angle indicator, and a 27,2 t (30 USt) swivel hook and weight ball weighing 1270 kgs (2,800 lbs) for 28 mm or 32 mm wire rope. The No. 55/79A boom utilizes steel suspension straps and Manitowoc's exclusive FACT™ connection system.

Powered boom hinge system including cylinder, piping, operating controls, and locking device are standard.

Utilize optional boom inserts in combination with the No. 55/79A basic boom for total lengths up to 121,9 m (400').

Luffing jib preparation is standard.

- Optional: 6,1 m (20'), and 12,2 m (40') No. 79 boom inserts with steel boom suspension straps, and FACT™ connection system.
- Optional: 12,2 m (40') No. 55 or No. 55A boom insert with steel boom suspension straps, and FACT™ connection system.
- Optional: 12,2 m (40') No. 55 or No. 55A boom insert with luffing drum sheaves, steel boom suspension straps, and FACT™ connection system.
- Optional: Intermediate suspension, required for boom lengths of 109,7 m (360') or more.
- Optional: Detachable upper boom point with one 762 mm (30") diameter tapered roller bearing steel sheave with rope guard, for liftcrane use on heavy-lift boom top. (Same upper point used on Models 555, 777, 14000, 999, 2250 and 16000.)
- Optional: Extended upper boom point on boom 55/79A.

Utilize optional boom inserts in combination with the No. 55/79A basic boom for total lengths up to 121,9 m (400').

No. 55 or No. 55A boom

The liftcrane is equipped with a 36,6 m (120') No. 55 or No. 55A tubular-chord boom consisting of a 6,1 m (20') No. 55 or No. 55A butt, 3,0 m (10') No. 55 or No. 55A insert, 6,1 m (20') No. 55 or No. 55A insert, 12,2 m (40') No. 55 or No. 55A insert with equalizer platform, and 9,1 m (30') No. 55 or No. 55A heavy-lift top with sixteen 762 mm (30") diameter roller bearing sheaves on one shaft. Includes rope guides, boom angle indicator, and a 27,2 mT (30 ton) swivel hook and weight ball weighing 1270 kgs (2,800 lbs.). The No. 55 or No. 55A boom utilizes steel suspension straps and Manitowoc's exclusive FACT™ connection system.

Powered boom hinge system including cylinder, piping, operating controls, and locking device are standard.

Utilize optional boom inserts in combination with the No. 55 or No. 55A basic boom for total lengths up to 97,5 m (320').

Luffing jib preparation is standard.

- Optional: 6,1 m (20'), 12,2 m (40') No. 55 or No. 55A boom inserts, and 12,2 m (40') No. 55 or No. 55A medium boom inserts with steel boom suspension straps, and FACT™ connection system.
- Optional: 12,2 m (40') No. 55 or No. 55A boom insert with luffing drum sheaves, steel boom suspension straps, and FACT™ connection system.
- Optional: Detachable upper boom point with one 762 mm (30") diameter tapered roller bearing steel sheave with rope guard, for liftcrane use on heavy-lift boom top. (Same upper point used on Models 555, 777, 14000, 999, 2250 and 16000.)
- Optional: Detachable upper boom point with one 762 mm (30") diameter tapered roller bearing steel sheave with rope guard, for liftcrane use on No. 55 boom top or 79A luffing jib top.

Utilize optional boom inserts in combination with the No. 55 or No. 55A basic boom for total lengths up to 97,5 m (320').

Specifications



No. 44 luffing jib

Optional: Components to make up 21,3 m (70') basic luffing jib include a 12,2 m (40') No. 44 butt, 9,1 m (30') No. 44 top, 15,2 m (50') jib strut with 7 sheaves, 14,3 m (47') main strut with 7 sheaves, jib strut stop, luffing jib stop, main luffing strut backstay straps, basic luffing jib steel rigging straps, combination upper point and luffing jib raising wheel, luffing drum assembly, 495 m (1625') luffing drum wire rope, and wire rope guide(s) as required.

Optional: 3,0 m (10'), 6,1 m (20'), and 12,2 m (40') No. 44 inserts with steel boom suspension straps.

Utilize optional luffing jib inserts in combination with the No. 44 basic luffing jib for total lengths up to 73,1 m (240').

Note: Basic luffing jib 12,2 m (40') No. 44 boom butt and 9,1 m (30') No. 44 boom top can be used from 2250 liftcrane. Luffing jib also uses No. 44 boom inserts and straps from 2250 liftcrane for luffing jib lengths greater than 21,3 m (70').

No. 79A luffing jib

Optional: Components to make up 21,3 m (90') basic luffing jib includes a 6,1 m (20') No. 79A butt, 12,2 m (40') No. 79 insert, 9,1 m (30') No. 79A top, jib strut, main strut, main jib strut stop, luffing jib stop, main luffing strut backstay straps, basic luffing jib steel rigging straps, upper point, luffing jib raising dolly, luffing drum assembly, luffing drum wire rope, and wire rope guide(s) as required.

Optional: 6,1 m (20'), and 12,2 m (40') No. 79 inserts with steel boom suspension straps, and FACT™ connection system.

Utilize optional luffing jib inserts in combination with the No. 79A basic luffing jib for total lengths up to 94,5 m (310').

Note: Basic luffing jib 9,1 m (30') No. 79A boom top can be used from No. 55-79A boom. Luffing jib also uses No. 79 boom inserts and straps from MAX-ER® 2000 liftcrane.



No. 79A fixed jib

Optional: Components to make up 15,2 m (50') basic fixed jib includes a 6,1 m (20') No. 79A butt, 9,1 m (30') No. 79A top, jib strut, backstay straps and jib support straps.

Optional: 6,1 m (20'), and 12,2 m (40') No. 79 inserts with steel boom suspension straps, and FACT™ connection system.

Utilize optional fixed jib inserts in combination with the No. 79A basic fixed jib for total lengths up to 33,5 m (110').

Note: Basic fixed jib 9,1 m (30') No. 79A boom top can be used from No. 55-79A boom. Fixed jib also uses No. 79 boom inserts and straps from MAX-ER® 2000 liftcrane.



The MAX-ER®

The MAX-ER® attachment components include:

One 12,2 m (40') No. 56 insert, added to increase the mast length to 42,7 m (140').

Two additional swing drives (for a total of four) mounted on the rotating module. Each swing drive is powered by a fixed-displacement hydraulic motor coupled to a planetary reduction gearbox and internal brake.

A wheeled or hanging MAX-ER® counterweight assembly attaches to the top of the mast by steel straps and to the rear of the upperworks by a shear-frame and to the top of the moving mast by steel straps for the 12,1 m (40') counterweight position.

The hanging MAX-ER® counterweight is 18 m (59') behind the crane's centerline of rotation, and the wheeled MAX-ER® counterweight is 12,1 m (40') or 18 m (59') behind the crane's centerline of rotation.

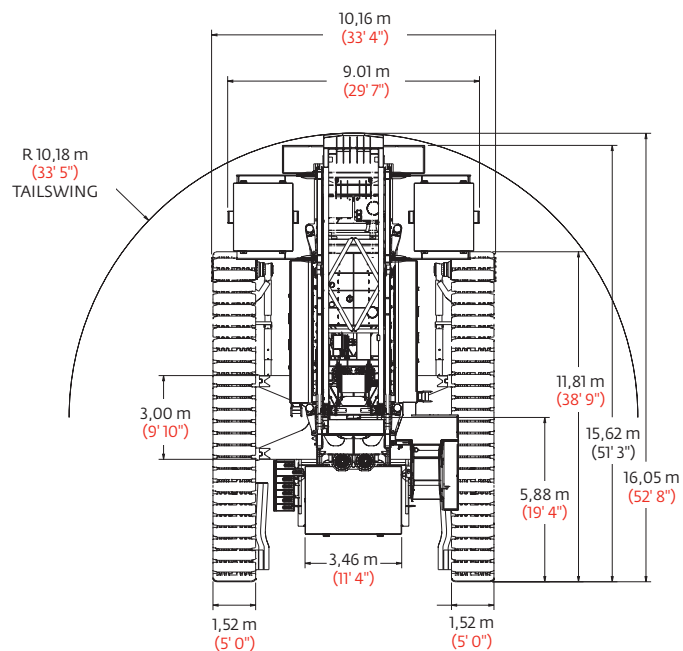
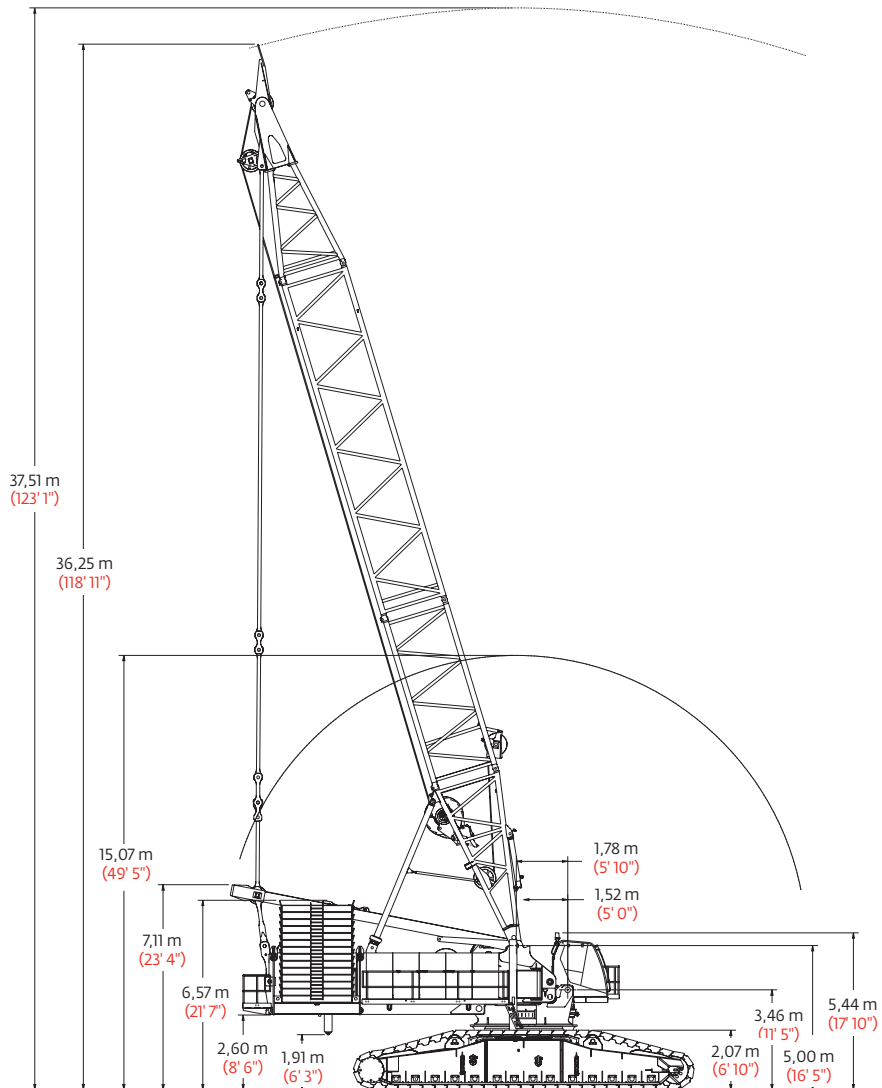
The wheeled counterweight uses large off-road tires, which can be positioned for traveling or swinging. It also includes hydraulic support jacks and pads.

Specifications

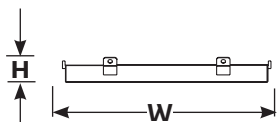
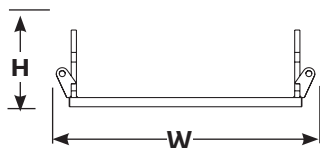
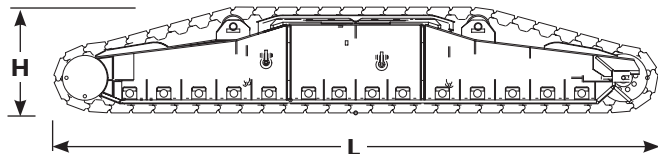
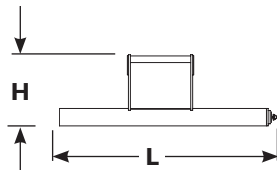
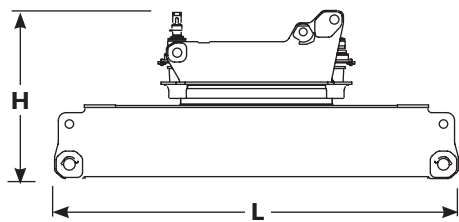
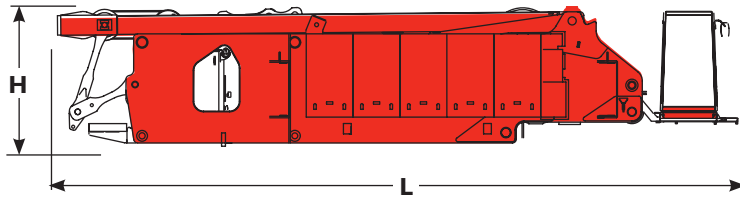
Optional equipment

- Optional: Self-erect system, includes: rotating bed jacking cylinders with pads, wireless controls, 91 t (100 ton) assembly block, crawler handling chains.
- Optional: Preparation for MAX-ER®.
- Optional: Hydraulic Test Kit: required to properly analyze the performance of the EPIC® control system.
- Optional: Service Interval Kits: for the regularly scheduled maintenance of general crane operations.
- Optional: Special Paint – color(s) other than Manitowoc standard red and black.
- Optional: Custom vinyl decal(s) of customer name and/or logo from artwork supplied by customer.
- Optional: Export Packaging: basic crane, boom and jib sections. MAX-ER® export packaging available.

Outline dimensions



Outline dimensions



Liftcrane

Length	13,59 m	44' 8"
Width	3,00 m	9' 10"
Height	2,69 m	8' 10"
Weight	47 370 kg	104,434 lb
Weight	40 068 kg	88,335 lb

Note: Weight 1 includes rotating bed rear section with pin pullers, counterweight, live mast, mast-hoist with wire rope, maximum hoist and whip lines on drums, Cummins QSX15 powerplant upperworks jacking system, full hydraulic fluid reservoir, and half tank of fuel.

Weight 2 is with upperworks jacking system removed.

Carbody and rotating bed

Length	7,89 m	25' 11"
Width	3,00 m	9' 10"
Height	3,33 m	11' 0"
Weight	43 499 kg	95,900 lb

Note: Weight includes rotating bed adapter frame with bearing turntable, four swing drives, and carbody.

Upperworks jacks

Length	3,29 m	10' 10"
Width	1,14 m	3' 9"
Height	0,31 m	1' 1"
Weight	1 826 kg	4,025 lb

Note: Shown in horizontal, retracted shipping position.

Crawlers

Length	11,81 m	38' 9"
Width	2,20 m	7' 3"
Height	2,07 m	6' 10"
Weight	40 031 kg	88,225 lb

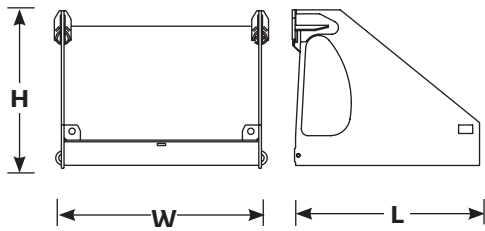
Carbody counterweight tray

Length	4,42 m	14' 6"
Width	2,39 m	7' 10"
Height	1,30 m	4' 4"
Weight	12 700 kg	28,000 lb

Lower counterweight

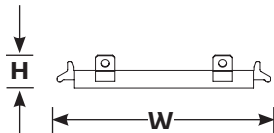
Length	2,59 m	8' 6"
Width	3,56 m	11' 8"
Height	0,51 m	1' 8"
Weight	19 958 kg	44,000 lb

Outline dimensions



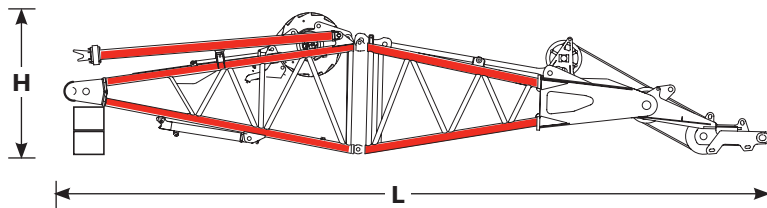
Upper counterweight tray

Length	2,84 m	9' 4"
Width	3,24 m	10' 8"
Height	2,38 m	7' 10"
Weight	5 465 kg	12,050 lb



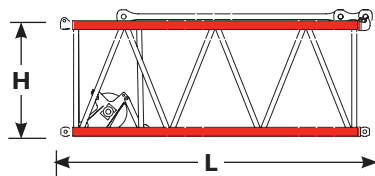
Upper counterweight

Length	2,54 m	8' 4"
Width	2,61 m	8' 7"
Height	0,41 m	1' 4"
Weight	8 164 kg	18,000 lb



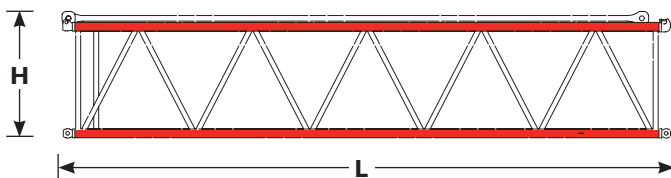
No. 56 mast butt and top package, drum, wire rope, equalizer

Length	15,11 m	49' 7"
Width	3,00 m	9' 10"
Height	2,79 m	9' 2"
Weight	26 251 kg	57,875 lb



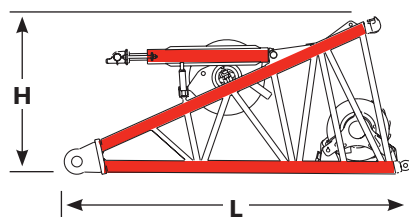
6,1 m (20') No. 56 mast insert and straps

Length	6,30 m	20' 8"
Width	3,00 m	8' 6"
Height	2,49 m	9' 10"
Weight	3 850 kg	8,490 lb



12,2 m (40') No. 56 mast insert and straps

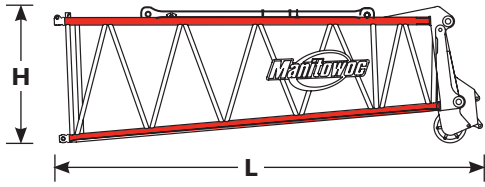
Length	12,45 m	40' 10"
Width	3,00 m	8' 6"
Height	2,49 m	9' 10"
Weight	6 323 kg	13,940 lb



6,1 m (20') No. 55 or No. 55A boom butt with drum, rigging winch and wire rope

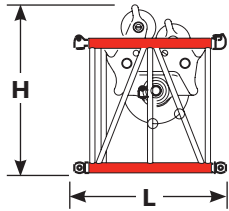
Length	6,62 m	21' 9"
Width	3,00 m	9' 10"
Height	3,10 m	10' 2"
Weight	26 251 kg	57,875 lb

Outline dimensions



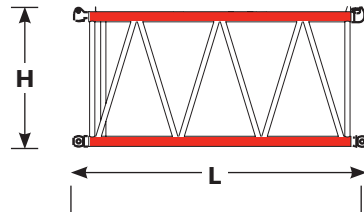
9,1 m (30') No. 55 or No. 55A boom top

Length	10,09 m	33' 2"
Width	3,00 m	10' 6"
Height	3,10 m	11' 4"
Weight	17 137 kg	37,781 lb



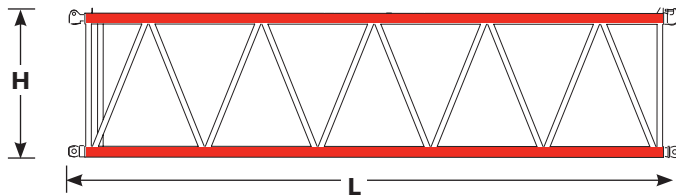
3,0 m (10') No. 55 or No. 55A boom insert with drum and wire rope

Length	6,35 m	20' 10"
Width	3,00 m	9' 10"
Height	3,10 m	10' 2"
Weight	16,311 kg	35,960 lb



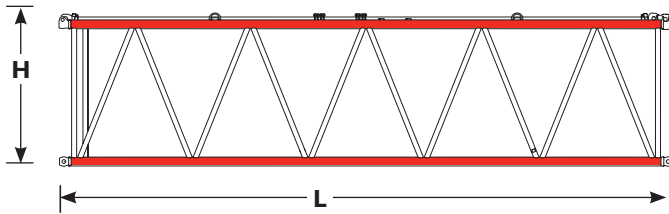
6,1 m (20') No. 55 or No. 55A boom insert

Length	6,35 m	20' 10"
Width	3,00 m	9' 10"
Height	3,10 m	10' 2"
Weight	4 860 kg	10,715 lb



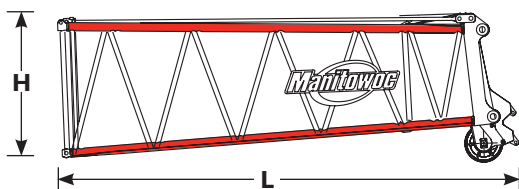
12,2 m (40') No. 55 or No. 55A boom insert

Length	12,37 m	40' 7"
Width	3,00 m	9' 10"
Height	3,10 m	10' 2"
Weight	8 384 kg	18,485 lb



12,2 m (40') No. 55/79A transition insert and straps

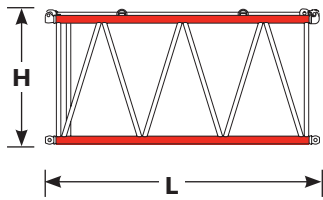
Length	12,37 m	40' 7"
Width	3,00 m	9' 10"
Height	3,10 m	10' 2"
Weight	8 908 kg	19,640 lb



9,1 m (30') No. 79A boom top

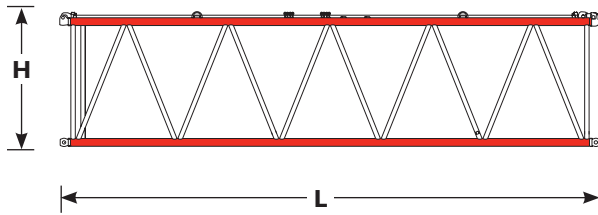
Length	10,05 m	33' 0"
Width	3,00 m	9' 10"
Height	3,10 m	11' 3"
Weight	12 625 kg	27,835 lb

Outline dimensions



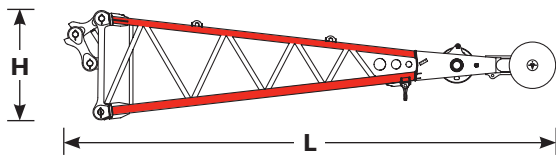
6,1 m (20') No. 79 boom insert

Length	6,27 m	20' 7"
Width	3,00 m	9' 10"
Height	3,09 m	10' 2"
Weight	3 553 kg	7,835 lb



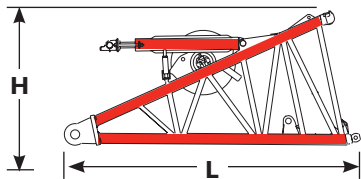
12,2 m (40') No. 79 boom insert

Length	12,37 m	40' 7"
Width	3,00 m	9' 10"
Height	3,09 m	10' 2"
Weight	5 978 kg	13,180 lb



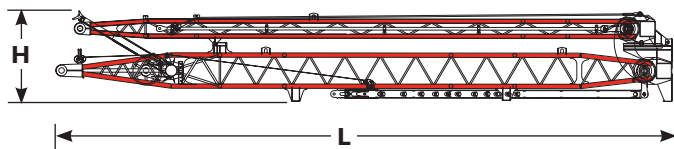
7,6 m (25') Extended upper boom point

Length	10,49 m	34' 5"
Width	2,70 m	8' 10"
Height	2,34 m	7' 8"
Weight	5 198 kg	11,460 lb



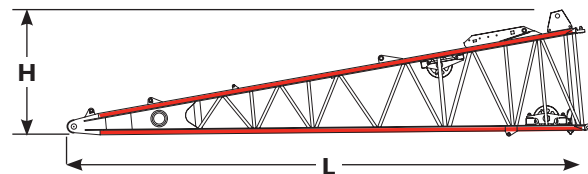
6,1 m (20') No. 79 luffing jib butt

Length	6,63 m	21' 9"
Width	3,00 m	9' 10"
Height	3,09 m	10' 2"
Weight	13 527 kg	29,822 lb



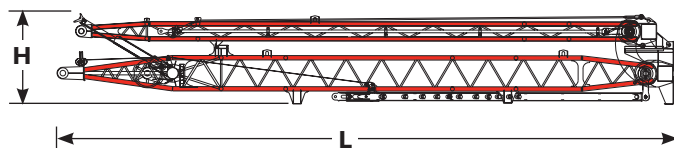
12,2 m (40') No. 79 luffing jib main masts

Length	16,15 m	53' 0"
Width	2,51 m	8' 3"
Height	2,36 m	7' 9"
Weight	10 544 kg	23,245 lb



12,2 m (40') No. 44 luffing jib butt

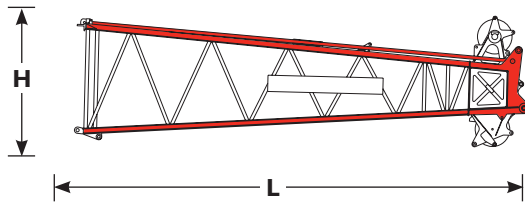
Length	12,78 m	41' 11"
Width	3,00 m	9' 10"
Height	3,00 m	9' 10"
Weight	5 194 kg	11,450 lb



12,2 m (40') No. 44 luffing jib masts

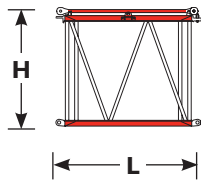
Length	16,15 m	53' 0"
Width	2,51 m	8' 3"
Height	2,36 m	7' 9"
Weight	10 544 kg	23,245 lb

Outline dimensions



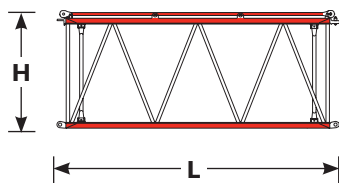
9,1 m (30') No. 44 boom top and wire rope guide, straps, lower point

Length	10,06 m	33' 0"
Width	2,59 m	8' 6"
Height	2,90 m	9' 6"
Weight	5 657 kg	12,475 lb



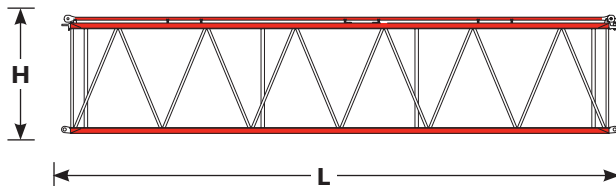
3,0 m (10') No. 44 luffing jib insert

Length	3,23 m	10' 7"
Width	2,59 m	8' 6"
Height	2,59 m	8' 6"
Weight	857 kg	1,890 lb



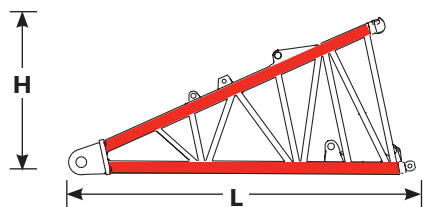
6,1 m (20') No. 44 luffing jib insert

Length	6,28 m	20' 7"
Width	2,59 m	8' 6"
Height	2,59 m	8' 6"
Weight	1 458 kg	3,215 lb



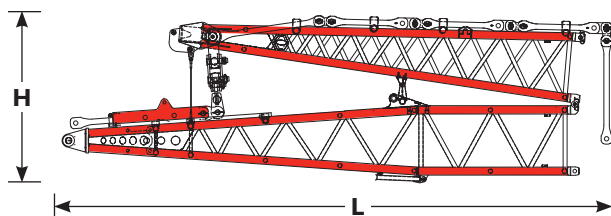
12,2 m (40') No. 44 luffing jib insert

Length	12,38 m	40' 7"
Width	2,59 m	8' 6"
Height	2,59 m	8' 6"
Weight	2 458 kg	5,420 lb



6,1 m (20') No. 79A fixed jib butt

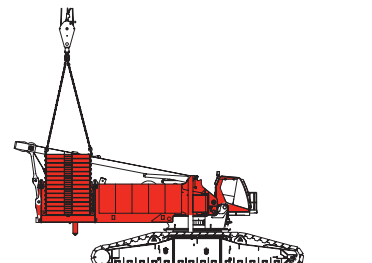
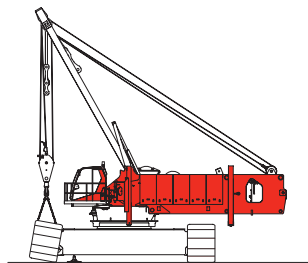
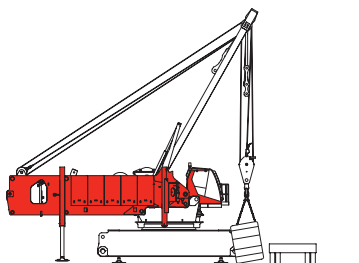
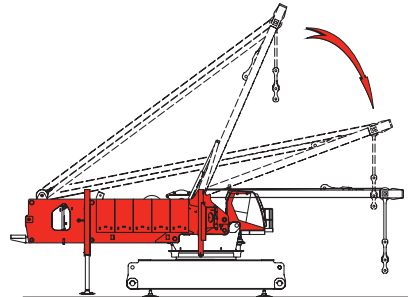
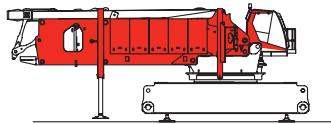
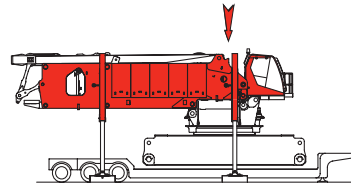
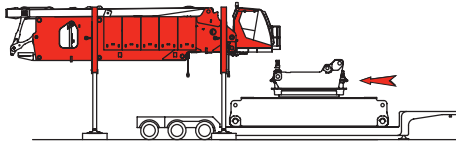
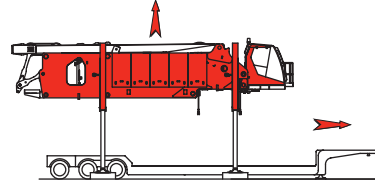
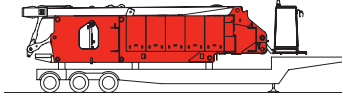
Length	6,52 m	21' 5"
Width	3,00 m	9' 10"
Height	3,02 m	9' 11"
Weight	4 482 kg	9,880 lb



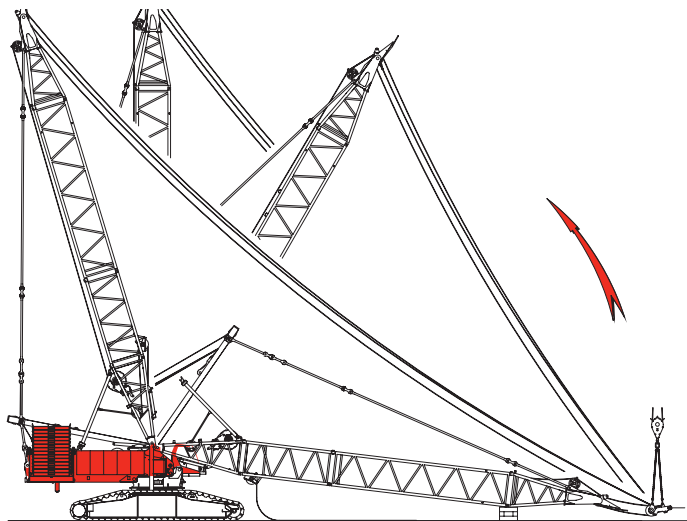
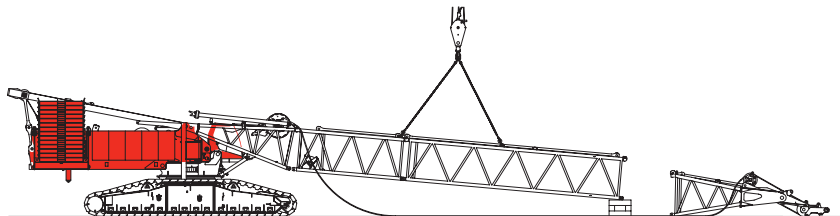
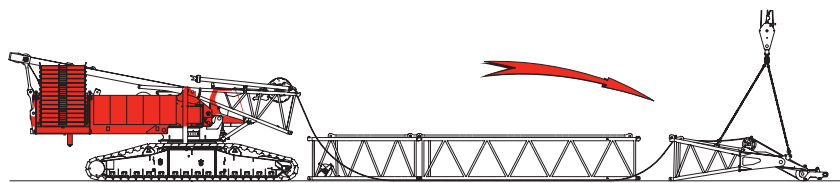
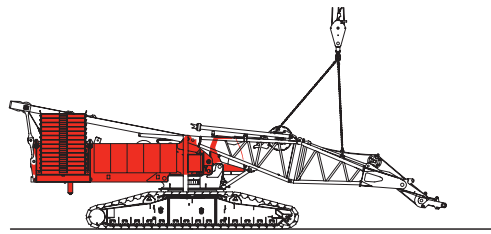
12,2 m (40') No. 79A fixed jib strut

Length	9,61 m	31' 6"
Width	2,97 m	9' 9"
Height	2,92 m	9' 7"
Weight	622 kg	16,802 lb

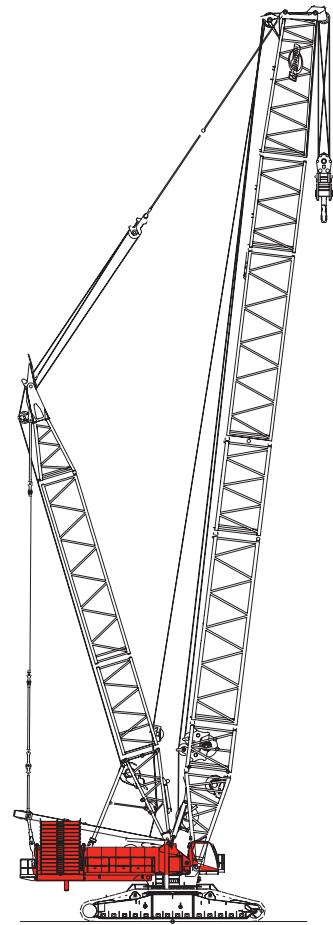
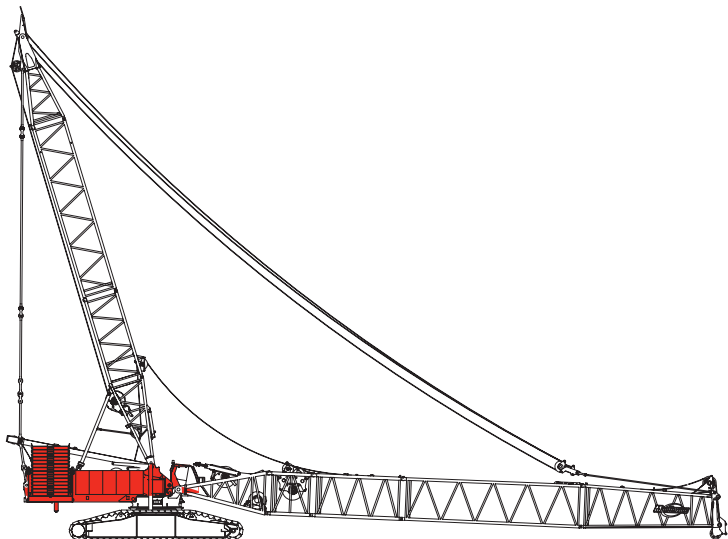
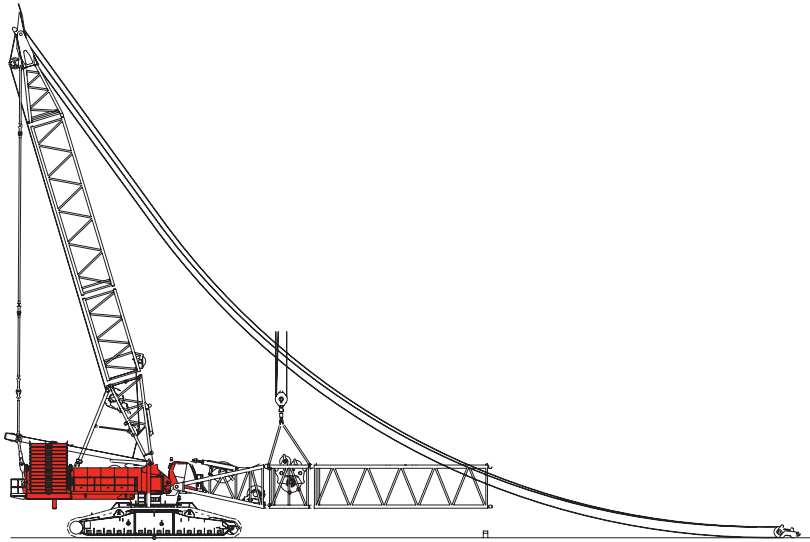
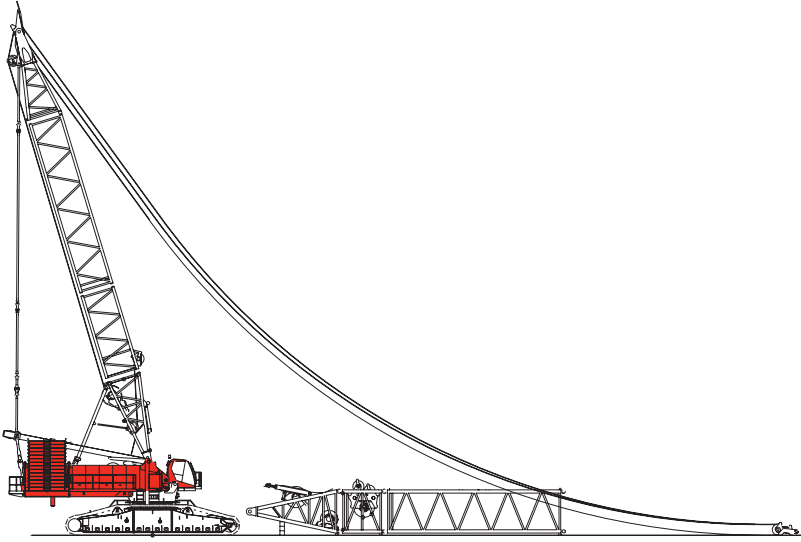
Crane assembly



Crane assembly



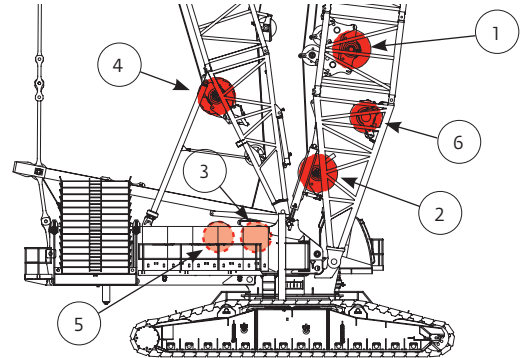
Crane assembly



Performance data

Drum identification

Drum number	Function
1	Main load drum – standard
2	Main/auxiliary load drum – standard
3	Whip hoist – standard
4	Boom hoist – standard
5	Mast hoist – standard
6	Luffing jib drum – optional
7	Rigging winch – optional (not shown, located in butt)



Working weight

	kg(lb)
30,5 m (100') No. 56 mast with 36,6 m (120') No. 55 or No. 55A main boom, upper boom point, 661 t (600 USt) hook block.	686 611 (1,513,720)
30,5 m (100') No. 56 mast with 36,6 m (120') No. 55/79A main boom upper boom point, 454 t (500 USt) hook block.	670 831 (1,478,930)

Typical working weight includes hydraulic reservoir full, fuel half-full, drums with standard lengths of wire rope, upper boom point and 27 t (30 USt) hook and weight ball.

Performance data

No. 55 or 55A boom Wire rope lengths - tandem drums - 28 mm hoist line

Boom or boom and fixed jib length	Whip line				Hoist line				Total parts of line
	Drum 3 (1 part of line)		Drum 3 (2 parts of line)		Drum 1		Drum 2		
	m	(ft)	m	(ft)	m	(ft)	m	(ft)	
36,6 (120)	91	(300)	130	(425)	579	(1900)	579	(1900)	28
42,7 (140)	99	(325)	145	(475)	671	(2200)	671	(2200)	28
48,8 (160)	114	(375)	168	(550)	762	(2500)	762	(2500)	28
54,9 (180)	122	(400)	183	(600)	853	(2800)	853	(2800)	28
61,0 (200)	137	(450)	206	(675)	853	(2800)	853	(2800)	24
67,1 (220)	152	(500)	221	(725)	914	(3000)	914	(3000)	24
73,2 (240)	160	(525)	236	(775)	975	(3200)	975	(3200)	24
79,2 (260)	175	(575)	259	(850)	975	(3200)	975	(3200)	20
85,3 (280)	183	(600)	274	(900)	975	(3200)	975	(3200)	20
91,4 (300)	198	(650)	297	(975)	975	(3200)	975	(3200)	16
97,5 (320)	213	(700)	312	(1025)	975	(3200)	975	(3200)	16

NOTE: Above hoist line lengths are based on tandem drums both reeved to the main load block. Each drum is dead-ended in main load block reeving. Total parts of line requires using both drums 1 and 2. Hoist and whip line lengths will allow hook to touch ground. When block travel below ground is required, add additional rope equal to parts of the line times the added travel distance. Hoisting distance or line pull may be limited when block travel below ground is required.

No. 55 or 55A boom Hoist reeving for main load block two lead lines - 28 mm wire rope

No. parts of line	Maximum load	
	kg	(lb)
8	130 180	287,000
12	195 270	430,500
16	260 360	574,000
20	325 500	717,600
24	390 540	861,000
28	455 600	1,004,600

No. 55 or 55A boom Wire rope length - single hoist drum - 28 mm hoist line

Boom length	Whip line - drum 2 or 3				Hoist line - drum 1		Maximum parts of line for full hoisting range
	1 part		2 part				
	m	(ft)	m	(ft)	m	(ft)	
36,6 (120)	91	(300)	130	(425)	1189	(3900)	30
42,7 (140)	99	(325)	145	(475)	1372	(4500)	30
48,8 (160)	114	(375)	168	(550)	1463	(4800)	28
54,9 (180)	122	(400)	183	(600)	1463	(4800)	24
61,0 (200)	137	(450)	206	(675)	1463	(4800)	22
67,1 (220)	152	(500)	221	(725)	1463	(4800)	20
73,2 (240)	160	(525)	236	(775)	1463	(4800)	18
79,2 (260)	175	(575)	259	(850)	1463	(4800)	16
85,3 (280)	183	(600)	274	(900)	1463	(4800)	14
91,4 (300)	198	(650)	297	(975)	1463	(4800)	14
97,5 (320)	213	(700)	312	(1025)	1463	(4800)	12

NOTE: Above hoist line lengths are based on single part lead line. Hoist and whip line lengths will allow hook to touch ground. When block travel below ground is required, add additional rope equal to parts of the line times the added travel distance. Hoisting distance or line pull may be limited when block travel below ground is required.

No. 55 or 55A boom Hoist reeving for main load block single lead line - 28 mm wire rope

No. parts of line	Maximum load	
	kg	(lb)
2	32 520	71,700
4	65 090	143,500
6	97 610	215,200
8	130 180	287,000
10	162 750	358,800
12	195 270	430,500
14	227 840	502,300
16	258 000	568,800
18	287 440	633,700
20	316 290	697,300
22	344 550	759,600
24	372 260	820,700
26	399 430	880,600
28	426 060	939,300
30	452,600	996,800

Performance data

No. 55 or 55A boom Wire rope length - tandem drums - 32 mm hoist line

Boom length	Whip line				Hoist line				Total parts of line
	Drum 3 (1 part of line)		Drum 3 (2 parts of line)		Drum 1		Drum 2		
	m	(ft)	m	(ft)	m	(ft)	m	(ft)	
36,6 (120)	91	(300)	130	(425)	579	(1900)	579	(1900)	28
42,7 (140)	99	(325)	145	(475)	579	(1900)	579	(1900)	24
48,8 (160)	114	(375)	168	(550)	671	(2200)	671	(2200)	24
54,9 (180)	122	(400)	183	(600)	671	(2200)	671	(2200)	20
61,0 (200)	137	(450)	206	(675)	701	(2300)	701	(2300)	20
67,1 (220)	152	(500)	221	(725)	701	(2300)	701	(2300)	16
73,2 (240)	160	(525)	236	(775)	701	(2300)	701	(2300)	16
79,2 (260)	175	(575)	259	(850)	732	(2400)	732	(2400)	16
85,3 (280)	183	(600)	274	(900)	792	(2600)	792	(2600)	16
91,4 (300)	198	(650)	297	(975)	792	(2600)	792	(2600)	12
97,5 (320)	213	(700)	312	(1025)	792	(2600)	792	(2600)	12

NOTE: Above hoist line lengths are based on tandem drums both reeved to the main load block. Each drum is dead-ended in main load block reeving. Total parts of line requires using both drums 1 and 2. Hoist and whip line lengths will allow hook to touch ground. When block travel below ground is required, add additional rope equal to parts of the line times the added travel distance. Hoisting distance or line pull may be limited when block travel below ground is required.

No. 55 or 55A boom Hoist reeving for main load block two lead lines - 32 mm wire rope

No. parts of line	Maximum load	
	kg	(lb)
8	177 080	390,400
12	265 620	585,600
16	354 160	780,800
20	442 710	976,000
24	531 250	1,171,200
28	600 000	1,322,800

No. 55 or 55A boom Wire rope lengths - single hoist drum - 32 hoist line

Boom length	Whip line - drum 2 or 3				Hoist line - drum 1		Maximum parts of line for full hoisting range
	1 Part		2 Part				
	m	(ft)	m	(ft)	m	(ft)	
36,6 (120)	91	(300)	130	(425)	1128	(3700)	28
42,7 (140)	99	(325)	145	(475)	1128	(3700)	24
48,8 (160)	114	(375)	168	(550)	1128	(3700)	20
54,9 (180)	122	(400)	183	(600)	1128	(3700)	18
61,0 (200)	137	(450)	206	(675)	1128	(3700)	16
67,1 (220)	152	(500)	221	(725)	1128	(3700)	14
73,2 (240)	160	(525)	236	(775)	1128	(3700)	14
79,2 (260)	175	(575)	259	(850)	1128	(3700)	12
85,3 (280)	183	(600)	274	(900)	1128	(3700)	12
91,4 (300)	198	(650)	297	(975)	1128	(3700)	10
97,5 (320)	213	(700)	312	(1025)	1128	(3700)	10

NOTE: Above hoist line lengths are based on single part lead line. Hoist and whip line lengths will allow hook to touch ground. When block travel below ground is required, add additional rope equal to parts of the line times the added travel distance. Hoisting distance or line pull may be limited when block travel below ground is required.

No. 55 or 55A boom Hoist reeving for main load block single lead line - 32 mm wire rope

No. parts of line	Maximum load	
	kg	(lb)
2	44 270	97,600
4	88 540	195,200
6	132 810	292,800
8	177 080	390,400
10	221 350	488,000
12	265 620	585,600
14	309 890	683,200
16	350 900	773,600
18	390 950	861,900
20	430 190	948,400
22	468 650	1,033,200
24	506 350	1,116,300
26	543 270	1,197,700
28	579 400	1,277,500

Performance data

No. 55-79A boom Wire rope lengths - single hoist drum - 28 mm hoist line

Boom length	Whip line - drum 2 or 3				Hoist line - drum 1		Maximum parts of line for full hoisting range
	1 part		2 part				
	m (ft)	m (ft)	m (ft)	m (ft)	m (ft)	m (ft)	
36,6 (120)	91 (300)	130 (425)	1189 (3900)			30	
42,7 (140)	99 (325)	145 (475)	1372 (4500)			30	
48,8 (160)	114 (375)	168 (550)	1463 (4800)			28	
54,9 (180)	122 (400)	183 (600)	1463 (4800)			24	
61,0 (200)	137 (450)	206 (675)	1463 (4800)			22	
67,1 (220)	152 (500)	221 (725)	1463 (4800)			20	
73,2 (240)	160 (525)	236 (775)	1463 (4800)			18	
79,2 (260)	175 (575)	259 (850)	1463 (4800)			16	
85,3 (280)	183 (600)	274 (900)	1463 (4800)			14	
91,4 (300)	198 (650)	297 (975)	1463 (4800)			12	
97,5 (320)	213 (700)	312 (1025)	1463 (4800)			12	
103,6 (340)	221 (725)	328 (1075)	1463 (4800)			10	
109,7 (360)	236 (775)	351 (1150)	1463 (4800)			10	
115,8 (380)	244 (800)	366 (1200)	1463 (4800)			8	

NOTE: Hoist and whip line lengths will allow hook to touch ground. When block travel below ground is required, add additional rope equal to parts of the line times the added travel distance. Hoisting distance or line pull may be limited when block travel below ground is required.

No. 55-79A boom Hoist reeving for main load block single lead line - 28 mm wire rope

No. parts of line	Maximum load	
	kg	(lb)
2	32 520	71,700
4	65 090	143,500
6	97 610	215,200
8	130 180	287,000
10	162 750	358,800
12	195 270	430,500
14	227 840	502,300
16	258 000	568,800
18	287 440	633,700
20	316 290	697,300
22	344 550	759,600
24	372 260	820,700
26	399 430	880,600
28	426 060	939,300
30	453 500	1,000,000

No. 55-79A boom Wire rope length - single hoist drum - 32 mm hoist line

Boom length	Whip line - drum 2 or 3				Hoist line - drum 1		Maximum parts of line for full hoisting range
	1 part		2 part				
	m (ft)	m (ft)	m (ft)	m (ft)	m (ft)	m (ft)	
36,6 (120)	91 (300)	130 (425)	884 (2900)			22	
42,7 (140)	99 (325)	145 (475)	1036 (3400)			22	
48,8 (160)	114 (375)	168 (550)	1067 (3500)			20	
54,9 (180)	122 (400)	183 (600)	1097 (3600)			18	
61,0 (200)	137 (450)	206 (675)	1097 (3600)			16	
67,1 (220)	152 (500)	221 (725)	1097 (3600)			14	
73,2 (240)	160 (525)	236 (775)	1128 (3700)			14	
79,2 (260)	175 (575)	259 (850)	1128 (3700)			12	
85,3 (280)	183 (600)	274 (900)	1128 (3700)			10	
91,4 (300)	198 (650)	297 (975)	1128 (3700)			10	
97,5 (320)	213 (700)	312 (1025)	1128 (3700)			10	
103,6 (340)	221 (725)	328 (1075)	1128 (3700)			8	
109,7 (360)	236 (775)	351 (1150)	1128 (3700)			6	
115,8 (380)	244 (800)	366 (1200)	1128 (3700)			6	
121,9 (400)	259 (850)	389 (1275)	1128 (3700)			6	

NOTE: Hoist and whip line lengths will allow hook to touch ground. When block travel below ground is required, add additional rope equal to parts of the line times the added travel distance. Hoisting distance or line pull may be limited when block travel below ground is required.

No. 55-79A boom Hoist reeving for main load block single lead line - 32 mm wire rope

No. parts of line	Maximum load	
	kg	(lb)
2	44 270	97,600
4	88 540	195,200
6	132 810	292,800
8	177 080	390,400
10	221 350	488,000
12	265 620	585,600
14	309 890	683,200
16	350 900	773,600
18	390 950	861,900
20	430 190	948,400
22	453 500	1,000,000

Performance data

No. 55-79A boom with 7.6m (25ft) - extended upper boom point Wire rope lengths - single hoist drum - 28 mm hoist line

Boom length	Whip line - drum 2 or 3				Hoist line - drum 1		Total parts of line
	1 part		2 part				
m (ft)	m (ft)	m (ft)	m (ft)	m (ft)	m (ft)		
61,0 (200)	152 (500)	229 (750)	640 (2100)			8	
67,1 (220)	168 (550)	244 (800)	701 (2300)			8	
73,2 (240)	175 (575)	259 (850)	762 (2500)			8	
79,2 (260)	191 (625)	282 (925)	823 (2700)			8	
85,3 (280)	206 (675)	297 (975)	884 (2900)			8	
91,4 (300)	213 (700)	312 (1025)	914 (3000)			8	
97,5 (320)	229 (750)	335 (1100)	975 (3200)			8	
103,6 (340)	236 (775)	351 (1150)	1036 (3400)			8	
109,7 (360)	251 (825)	373 (1225)	1097 (3600)			8	
115,8 (380)	267 (875)	389 (1275)	1097 (3600)			6	
121,9 (400)	274 (900)	404 (1325)	1097 (3600)			6	

NOTE: Hoist and whip line lengths will allow hook to touch ground. When block travel below ground is required, add additional rope equal to parts of the line times the added travel distance. Hoisting distance or line pull may be limited when block travel below ground is required.

No. 55-79A boom with 7.6 m (25 ft) extended upper boom point Hoist reeving for main load block single lead line - 28 mm wire rope

No. parts of line	Maximum load	
	kg	(lb)
2	32 520	71,700
4	65 090	143,500
6	97 610	215,200
8	130 180	287,000

No. 55-79A boom with 7.6 m (25 ft) extended upper boom point Wire rope length - single hoist drum - 32 mm hoist line

Boom length	Whip line - drum 2 or 3				Hoist line		Total parts of line
	1 part		2 part				
m (ft)	m (ft)	m (ft)	m (ft)	m (ft)	m (ft)		
61,0 (200)	152 (500)	229 (750)	518 (1700)			6	
67,1 (220)	168 (550)	244 (800)	549 (1800)			6	
73,2 (240)	175 (575)	259 (850)	610 (2000)			6	
79,2 (260)	191 (625)	282 (925)	640 (2100)			6	
85,3 (280)	206 (675)	297 (975)	671 (2200)			6	
91,4 (300)	213 (700)	312 (1025)	732 (2400)			6	
97,5 (320)	229 (750)	335 (1100)	762 (2500)			6	
103,6 (340)	236 (775)	351 (1150)	823 (2700)			6	
109,7 (360)	251 (825)	373 (1225)	853 (2800)			6	
115,8 (380)	267 (875)	389 (1275)	853 (2800)			4	
121,9 (400)	274 (900)	404 (1325)	853 (2800)			4	

NOTE: Hoist and whip line lengths will allow hook to touch ground. When block travel below ground is required, add additional rope equal to parts of the line times the added travel distance. Hoisting distance or line pull may be limited when block travel below ground is required.

No. 55-79A boom with 7.6 m (25 ft) extended upper boom point Hoist reeving for main load block single lead line - 32 mm wire rope

No. parts of line	Maximum load	
	kg	(lb)
2	44 270	97,600
4	88 540	195,200
6	132 810	292,800

Performance data

Maximum spooling capacities

Drum 1 (hoist line) 32 mm wire rope*	1 015 m (3,330 ft) 9 layers
Drum 2 (whip line) 32 mm wire rope*	1 015 m (3,330 ft) 9 layers
Drum 3 (whip line) 28 mm wire rope	579 m (1,900 ft) 8 layers

*7 m (23 ft) is deducted from maximum spooling capacities for 3 dead wraps per drum.
Refer to Drum and Lagging Chart No. 8512-A and Load Block Reeving Folio No. 2032

Maximum spooling capacities

Drum 1 (hoist line) 28 mm wire rope*	1 440 m (4,723 ft) 11 layers
Drum 2 (hoist or whip line) (28 mm) wire rope*	1 440 m (4,723 ft) 11 layers
Drum 3 (whip line) 28 mm wire rope	579 m (1,900 ft) 8 layers

*7 m (23 ft) is deducted from maximum spooling capacities for 3 dead wraps per drum.

Refer to Drum and Lagging Chart No. 8512-A and Load Block Reeving Folio No. 2003 for Boom No. 55 or 55A.

Refer to Drum and Lagging Chart No. 8512-A and Load Block Reeving Folio No. 2032 for Boom No. 55-79A.

No. 55-79A boom and No. 55* or 55A* boom Hoist reeving for jib load block single lead line - 28 mm wire rope

No. parts of line	Maximum load	
	kg	(lb)
2	32 520	71,700
4	65 090	143,500
6	97 610	215,200
8	130 180	287,000
10	162 750	358,800
12	193 410	426,400
14	223 440	492,600
16	350 900	551,200
18*	284 580*	627,400*
20*	295 000*	650,400*

* Only for No. 55 or 55A boom with fixed jib 79A

No. 79A fixed jib on No. 55 or 55A boom Wire rope lengths - single hoist drum 28 mm hoist line

Boom length m (ft)	Hoist line - drum 1 maximum parts of line				Hoist line drum 1 m (ft)	Whip line drum 2 or 3	
	Jib length m (ft)					1 part	2 part
	15,2 (50)	21,3 (70)	27,4 (90)	33,5 (110)		m (ft)	m (ft)
42,7 (140)	20	18	16	14	1250 (4100)	175 (575)	251 (825)
48,8 (160)	18	16	14	12	1250 (4100)	183 (600)	274 (900)
54,9 (180)	18	14	12	12	1341 (4400)	198 (650)	290 (950)
61,0 (200)	16	14	12		1341 (4400)	198 (650)	290 (950)
67,1 (220)	16				1402 (4600)	198 (650)	290 (950)

NOTE: Hoist and whip line lengths will allow hook to touch ground. When block travel below ground is required, add additional rope equal to parts of the line times the added travel distance. Hoisting distance or line pull may be limited when block travel below ground is required.

No. 79A fixed jib on No. 55 or 55A boom Wire rope lengths - single hoist drum - 28 mm hoist line

Boom length m (ft)	Hoist line - drum 1 Maximum parts of line												Hoist line drum 1 m (ft)
	Jib length m (ft)												
	27,4 (90)	33,5 (110)	39,6 (130)	45,7 (150)	51,8 (170)	57,9 (190)	64,0 (210)	70,1 (230)	76,2 (250)	82,3 (270)	88,4 (290)	94,5 (310)	
48,8 (160)	16	14	12	12	10	10	10	8	8	6	6	6	1311 (4300)
54,9 (180)	14	14	12	12	10	10	8	8	6	6	4		1341 (4400)
61,0 (200)	14	14	12	12	10	10							1433 (4700)

NOTE: Above hoist line lengths are based on single part lead line.

Performance data

No. 44 luffing jib on No. 55-79A boom Wire rope lengths - 28 mm hoist line

Boom length luffing jib length	Whip line - drum 2 or 3			
	1 part		2 part	
	m	(ft)	m	(ft)
64,0 (210)	146	(480)	221	(725)
67,1 (220)	152	(500)	229	(750)
70,1 (230)	158	(520)	236	(775)
73,2 (240)	165	(540)	251	(825)
76,2 (250)	171	(560)	259	(850)
79,2 (260)	177	(580)	267	(875)
73,2 (270)	183	(600)	274	(900)
79,2 (280)	189	(620)	282	(925)
85,3 (290)	195	(640)	290	(950)
91,4 (300)	201	(660)	305	(1000)
94,5 (310)	207	(680)	312	(1025)
97,5 (320)	213	(700)	320	(1050)
100,6 (330)	219	(720)	328	(1075)
103,6 (340)	226	(740)	335	(1100)
106,7 (350)	232	(760)	343	(1125)
109,7 (360)	238	(780)	358	(1175)
112,8 (370)	244	(800)	366	(1200)
115,8 (380)	250	(820)	373	(1225)
118,9 (390)	256	(840)	381	(1250)
121,9 (400)	262	(860)	389	(1275)
125,0 (410)	268	(880)	404	(1325)
128,0 (420)	274	(900)	411	(1350)
131,1 (430)	280	(920)	419	(1375)
134,1 (440)	287	(940)	427	(1400)
137,2 (450)	293	(960)	434	(1425)
140,2 (460)	299	(980)	442	(1450)
143,3 (470)	305	(1000)	457	(1500)
146,3 (480)	311	(1020)	465	(1525)
149,4 (490)	317	(1040)	472	(1550)
152,4 (500)	323	(1060)	480	(1575)
155,5 (510)	329	(1080)	488	(1600)
158,5 (520)	335	(1100)	495	(1625)

NOTE: Whip line lengths given in table will allow hook to touch ground. When hook travel below ground is required, add additional rope equal to parts of the line times the added travel distance. Hoisting distance or line pull may be limited when block travel below ground is required.

No. 44 luffing jib on No. 55-79A boom Wire rope lengths - 28 mm hoist line Hoist line drum wire 1280 m (4,200 ft)

Luffing jib m (ft)	Boom length m (ft)							
	42,7 (140)	48,8 (160)	54,9 (180)	61,0 (200)	67,1 (220)	73,2 (240)	79,2 (260)	85,4 (280)
21,3 (70)	16	16	14	14	12	12	10	8
24,4 (80)	16	16	14	12	12	10	10	8
27,4 (90)	14	14	12	12	12	10	8	8
30,5 (100)	14	14	12	10	10	10	8	8
33,5 (110)	12	12	10	10	10	8	8	6
36,6 (120)	10	10	10	10	10	8	6	6
39,6 (130)	10	10	10	8	8	8	6	6
42,7 (140)	10	10	10	8	8	8	6	6
45,7 (150)	8	8	8	8	8	6	6	6
48,8 (160)	8	8	8	8	6	6	6	6
51,8 (170)	8	8	8	6	6	6	8	4
54,9 (180)	8	8	6	6	6	6	4	4
57,9 (190)	6	6	6	6	6	6	4	4
61,0 (200)	6	6	6	6	6	4	4	4
64,0 (210)	6	6	6	6	4	4	4	4
67,1 (220)	6	6	6	4	4	4	4	4
70,1 (230)	4	4	4	4	4	4	4	4
73,2 (240)	4	4	4	4	4	4	4	4

NOTE: Whip line lengths given in table will allow hook to touch ground. When block travel below ground is required, add additional rope equal to parts of the line times the added travel distance. Hoisting distance or line pull may be limited when block travel below ground is required.

Performance data

Performance for main hoist (drum #1) and also auxiliary hoist (drum #2)

28 mm wire rope - lagging groove root diameter 28.125 inches

Single line speed in m (ft) per minute

Layer	1	2	3	4	5	6	7	8	9	10	11
Single line pull radius	371 mm (14.6")	399 mm (15.7")	427 mm (16.8")	455 mm (17.9")	483 mm (19.0")	511 mm (20.1")	538 mm (21.2")	566 mm (22.3")	594 mm (23.4")	625 mm (24.6")	650 mm (25.6")
Single line pull kg (lb)											
0 (0)	94 (309)	101 (333)	109 (356)	116 (379)	123 (402)	130 (426)	137 (449)	144 (472)	151 (496)	158 (519)	165 (542)
4 536 (10,000)	90 (295)	96 (316)	103 (337)	109 (358)	115 (378)	122 (399)	128 (419)	134 (439)	140 (459)	146 (479)	152 (498)
9 072 (20,000)	85 (280)	91 (299)	97 (318)	103 (338)	108 (354)	113 (371)	119 (389)	123 (405)	129 (422)	133 (436)	134 (441)
13 607 (30,000)	81 (266)	86 (283)	89 (293)	91 (297)	92 (302)	93 (306)	95 (311)	96 (315)	98 (320)	99 (324)	100 (329)
16 239 (35,800)	75 (247)	77 (252)	78 (256)	80 (261)	81 (265)	82 (270)	84 (274)	85 (279)	86 (283)	88 (288)	89 (292)

Performance for main hoist (drum #1) and also auxiliary hoist (drum #2)

32 mm wire rope - lagging groove

Single line speed in m (ft) per minute

Layer	1	2	3	4	5	6	7	8	9
Single line pull radius	371 mm (14.6")	406 mm (16.0")	437 mm (17.2")	470 mm (18.5")	500 mm (19.7")	533 mm (21.0")	566 mm (22.3")	570 mm (23.5")	630 mm (24.8")
Single line pull kg (lb)									
0 (0)	95 (311)	103 (338)	111 (364)	119 (391)	127 (417)	135 (444)	144 (471)	151 (497)	160 (524)
4 536 (10,000)	90 (296)	98 (320)	105 (344)	112 (368)	119 (391)	126 (415)	134 (438)	140 (460)	147 (483)
9 072 (20,000)	86 (282)	92 (303)	99 (324)	105 (345)	111 (365)	117 (385)	123 (404)	129 (423)	133 (437)
13 607 (30,000)	81 (267)	87 (286)	90 (294)	91 (299)	93 (305)	94 (310)	96 (315)	98 (320)	99 (325)
18 144 (40,000)	69 (228)	71 (233)	73 (238)	74 (243)	76 (248)	77 (254)	79 (259)	80 (264)	78 (256)
22 135 (48,800)	61 (199)	62 (203)	63 (208)	65 (213)	67 (218)	68 (223)	69 (228)	71 (234)	73 (239)

Performance data

Performance for whip (drum #3)								
28 mm wire rope - drum barrel groove root diameter 25.25 inches								
Single line speed in m (ft) per minute								
Layer	1	2	3	4	5	6	7	8
Single line pull radius	335 mm (13.2")	363 mm (14.3")	391 mm (15.4")	419 mm (16.5")	447 mm (17.6")	460 mm (18.1")	503 mm (19.8")	531 mm (20.9")
Single line pull kg (lb)								
0 (0)	85 (279)	92 (302)	99 (325)	104 (340)	113 (372)	120 (395)	128 (419)	135 (442)
2 268 (5,000)	81 (267)	88 (288)	94 (310)	101 (330)	107 (351)	113 (372)	119 (392)	126 (413)
4 536 (10,000)	78 (255)	84 (275)	90 (294)	95 (312)	101 (331)	106 (348)	112 (366)	117 (383)
6 804 (15,000)	74 (244)	80 (261)	85 (278)	89 (291)	90 (296)	91 (300)	93 (305)	94 (309)
9 072 (20,000)	68 (222)	69 (226)	70 (231)	72 (235)	73 (240)	74 (244)	76 (249)	77 (253)
11 340 (25,000)	57 (188)	59 (193)	60 (197)	62 (202)	63 (206)	64 (211)	66 (215)	69 (228)
13 607 (30,000)	51 (168)	52 (170)	53 (175)	55 (179)	56 (184)	57 (188)	59 (193)	60 (197)

Boom and fixed jib combinations

No. 55 or 55A boom combinations

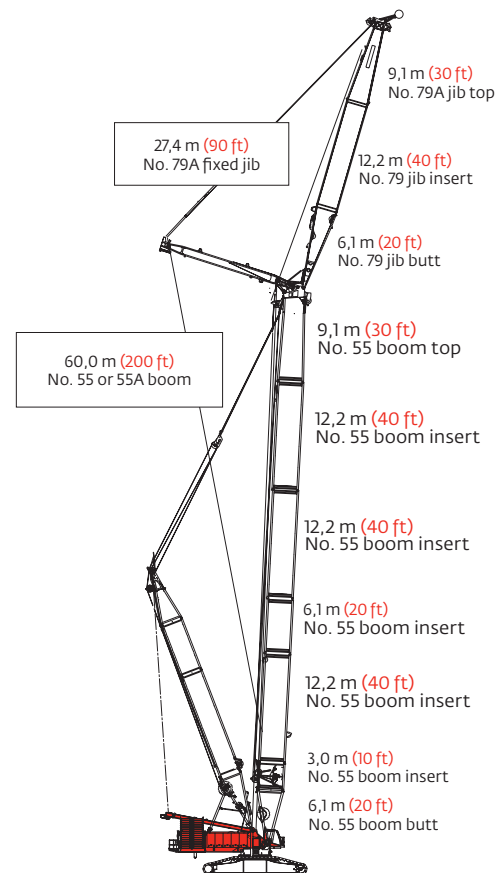
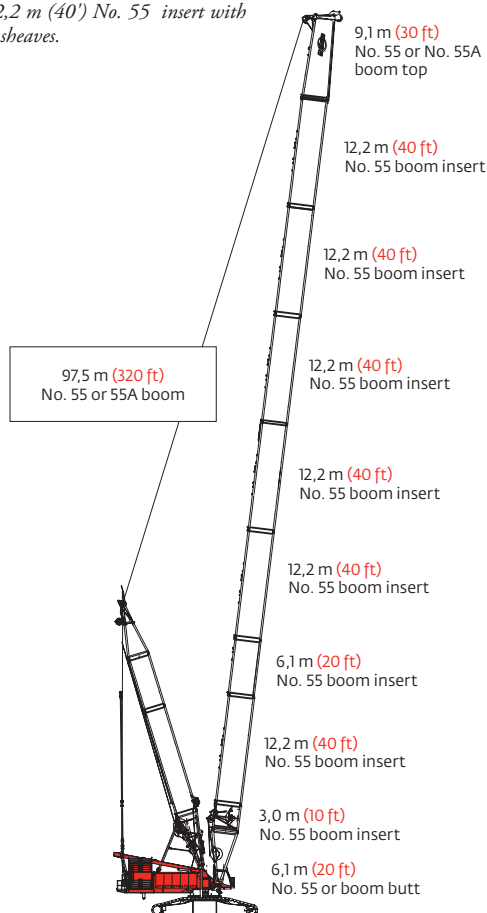
Boom length m (ft)	Boom inserts		
	3,0 m (10 ft)	6,1 m (20 ft)	12,2 m (40 ft)
36,6 (120)	1	1	1
42,7 (140)	1	-	2
48,8 (160)	1	1	2
54,9 (180)	1	2	2
61,0 (200)	1	1	3
67,1 (220)	1	2	3
73,2 (240)	1	1	4
79,2 (260)	1	2	4
85,3 (280)	1	1	5
91,4 (300)	1	2	5
97,5 (320)	1	1	6

No. 79A fixed jib combinations

Fixed jib Length m (ft)	Fixed jib inserts	
	6,1 m (20 ft)	12,2 m (40 ft)
15,2 (50)	-	-
21,3 (70)	1	-
27,4 (90)	-	1
33,5 (110)	1	1

NOTE: 36,6 m (120') basic boom consists of 6,1 m (20') butt, 3,0 m (10') insert with drum, 6,1 m (20') insert, 12,2 m (40'), and 9,1 m (30') top.

May use 12,2 m (40') No. 55 insert with or without sheaves.



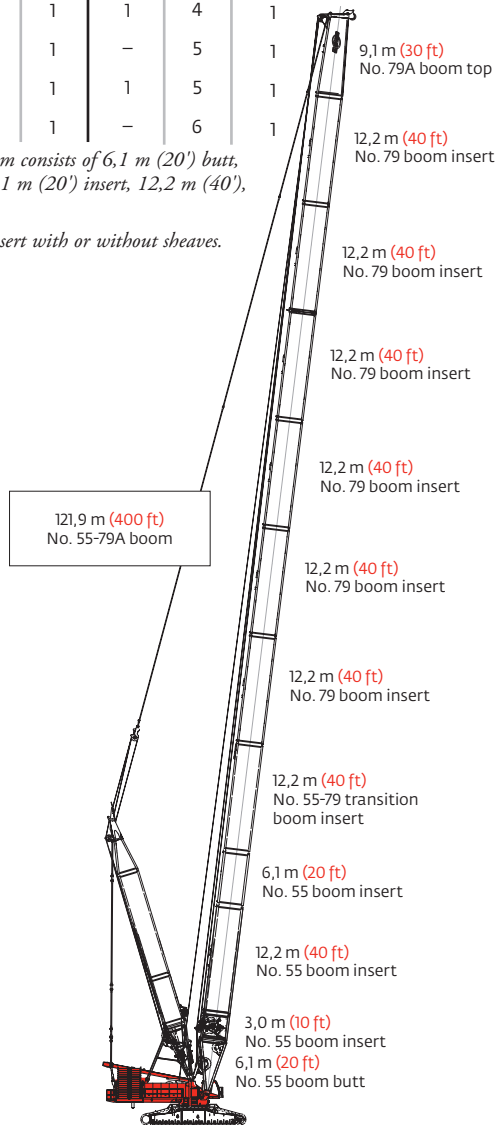
No. 55-79A boom combinations

No. 55-79A boom combinations

Boom length m (ft)	Boom inserts						
	55*			79			No. 55-79A transition
	3,0 m (10 ft)	6,1 m (20 ft)	12,2 m (40 ft)	6,1 m (20 ft)	12,2 m (40 ft)	12,2 m (40 ft)	
36,6 (120)	1	1	-	-	-	1	
42,7 (140)	1	-	1	-	-	1	
48,8 (160)	1	1	1	-	-	1	
54,9 (180)	1	1	1	1	-	1	
61,0 (200)	1	1	1	-	1	1	
67,1 (220)	1	1	1	1	1	1	
73,2 (240)	1	1	1	-	2	1	
79,2 (260)	1	1	1	1	2	1	
85,3 (280)	1	1	1	-	3	1	
91,4 (300)	1	1	1	1	3	1	
97,5 (320)	1	1	1	-	4	1	
103,6 (340)	1	1	1	1	4	1	
109,7 (360)	1	1	1	-	5	1	
115,8 (380)	1	1	1	1	5	1	
121,9 (400)	1	1	1	-	6	1	

NOTE: 36,6 m (120') basic boom consists of 6,1 m (20') butt, 3,0 m (10') insert with drum, 6,1 m (20') insert, 12,2 m (40'), and 9,1 m (30') top.

May use 12,2 m (40') No. 55 insert with or without sheaves.

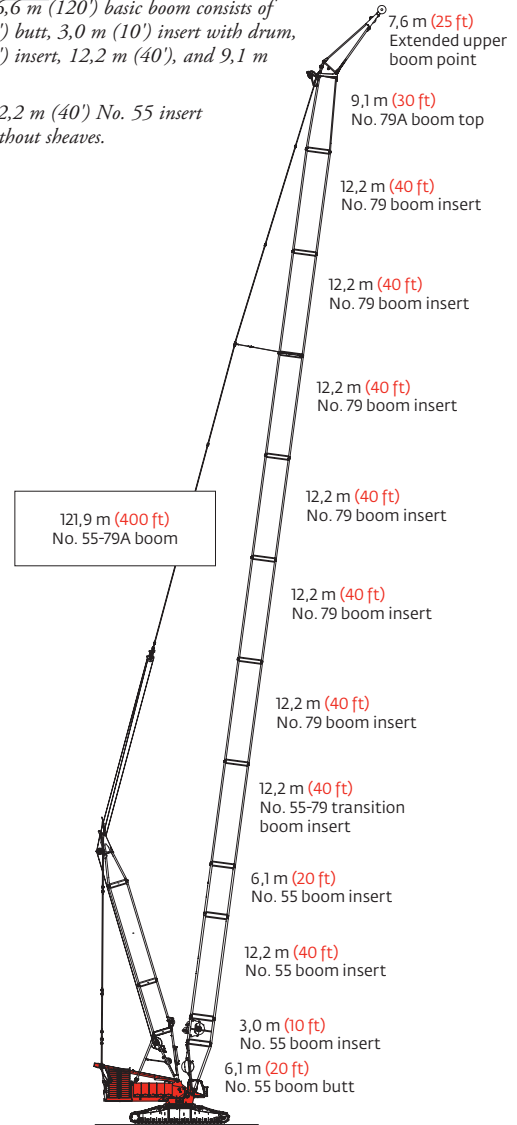


No. 55-79A boom combinations

Boom length m (ft)	Boom inserts						
	55*			79			No. 55-79A transition
	3,0 m (10 ft)	6,1 m (20 ft)	12,2 m (40 ft)	6,1 m (20 ft)	12,2 m (40 ft)	12,2 m (40 ft)	
61,0 (200)	1	1	1	-	1	1	
67,1 (220)	1	1	1	1	1	1	
73,2 (240)	1	1	1	-	2	1	
79,2 (260)	1	1	1	1	2	1	
85,3 (280)	1	1	1	-	3	1	
91,4 (300)	1	1	1	1	3	1	
97,5 (320)	1	1	1	-	4	1	
103,6 (340)	1	1	1	1	4	1	
109,7 (360)	1	1	1	-	5	1	
115,8 (380)	1	1	1	1	5	1	
121,9 (400)	1	1	1	-	6	1	

NOTE: 36,6 m (120') basic boom consists of 6,1 m (20') butt, 3,0 m (10') insert with drum, 6,1 m (20') insert, 12,2 m (40'), and 9,1 m (30') top.

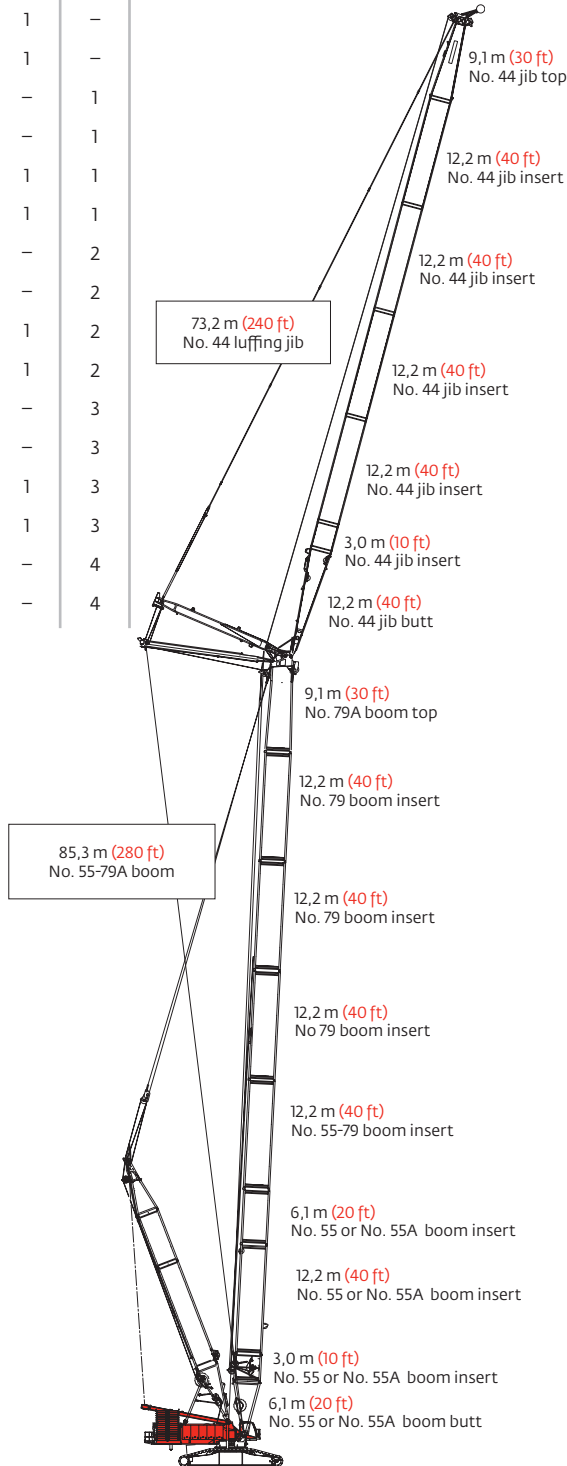
May use 12,2 m (40') No. 55 insert with or without sheaves.



Boom and luffing jib combinations

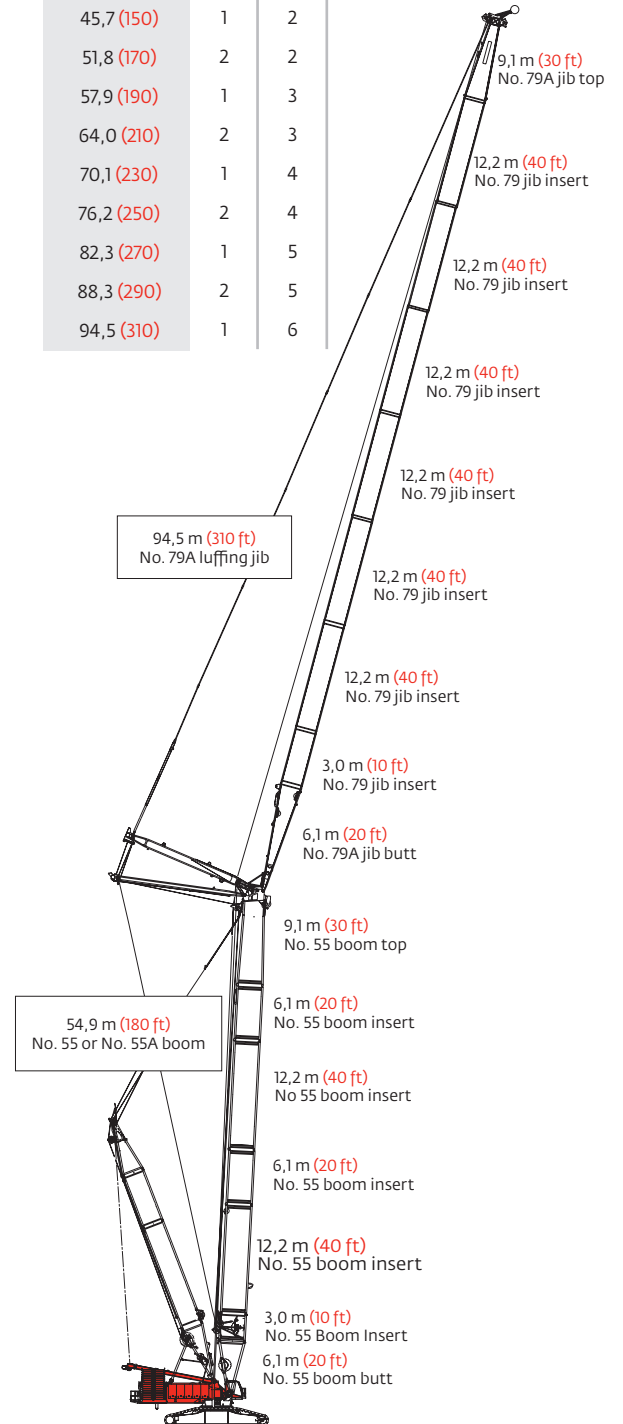
No. 44 luffing jib combinations

Luffing jib length m (ft)	Luffing jib inserts		
	3,0 m (10 ft)	6,1 m (20 ft)	12,2 m (40 ft)
21,3 (70)	-	-	-
24,4 (80)	1	-	-
27,4 (90)	-	1	-
30,5 (100)	1	1	-
33,5 (110)	-	-	1
36,6 (120)	1	-	1
39,6 (130)	-	1	1
42,7 (140)	1	1	1
45,7 (150)	-	-	2
48,8 (160)	1	-	2
51,8 (170)	-	1	2
54,9 (180)	1	1	2
57,9 (190)	-	-	3
61,0 (200)	1	-	3
64,0 (210)	-	1	3
67,1 (220)	1	1	3
70,1 (230)	-	-	4
73,2 (240)	1	-	4



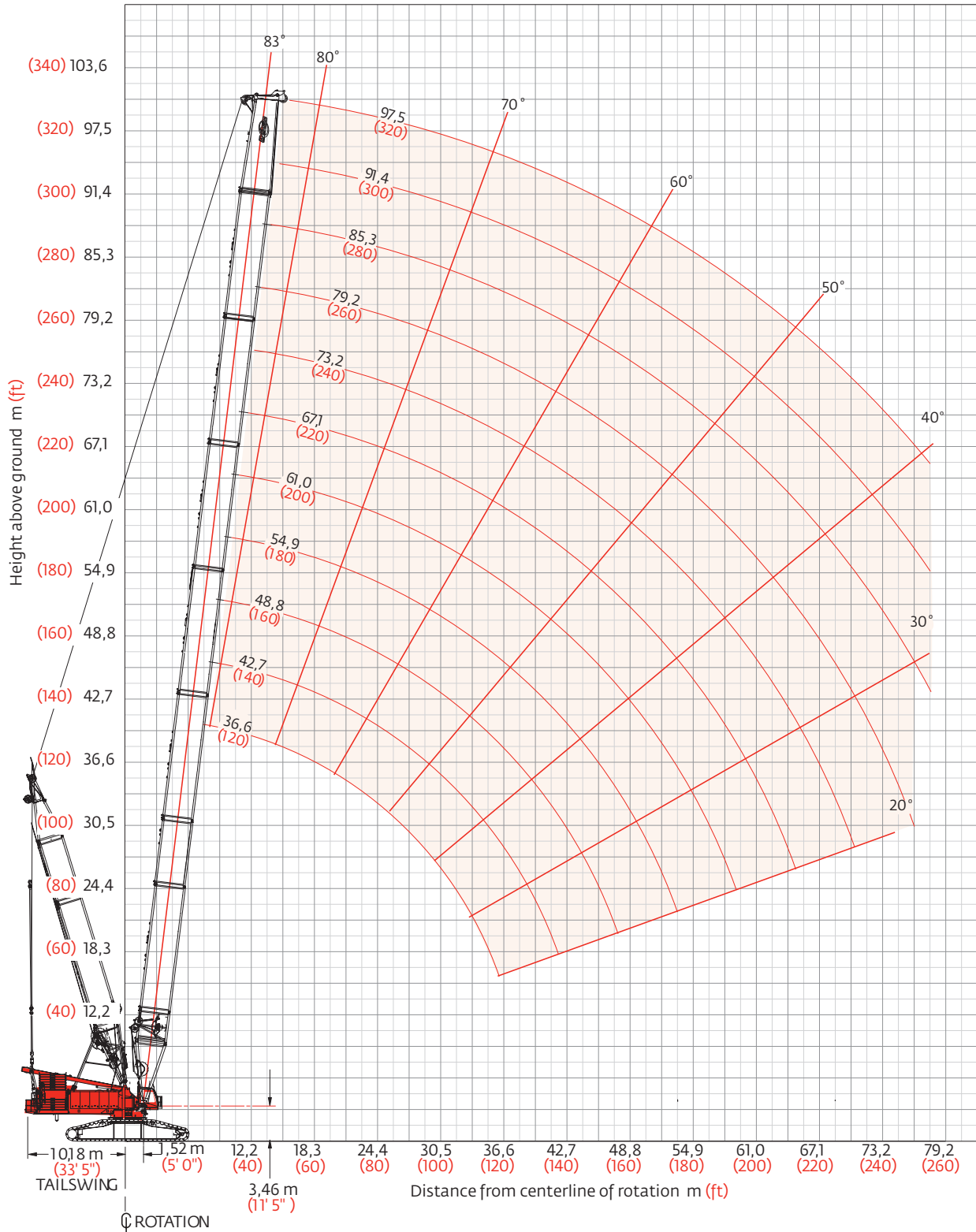
No. 79A luffing jib combinations

Luffing jib length m (ft)	Luffing jib inserts	
	6,1 m (20 ft)	12,2 m (40 ft)
27,4 (90)	2	-
33,5 (110)	1	1
39,6 (130)	2	1
45,7 (150)	1	2
51,8 (170)	2	2
57,9 (190)	1	3
64,0 (210)	2	3
70,1 (230)	1	4
76,2 (250)	2	4
82,3 (270)	1	5
88,3 (290)	2	5
94,5 (310)	1	6



No. 55 or 55A boom range diagram

No. 55 or 55A boom



No. 55 or 55A boom load charts

No. 55 or 55A boom

239 500 kg (528,000 lb) Counterweight 145 150 kg (320,000 lb) Carbody counterweight

360° Rating, kg (lb) x 1 000

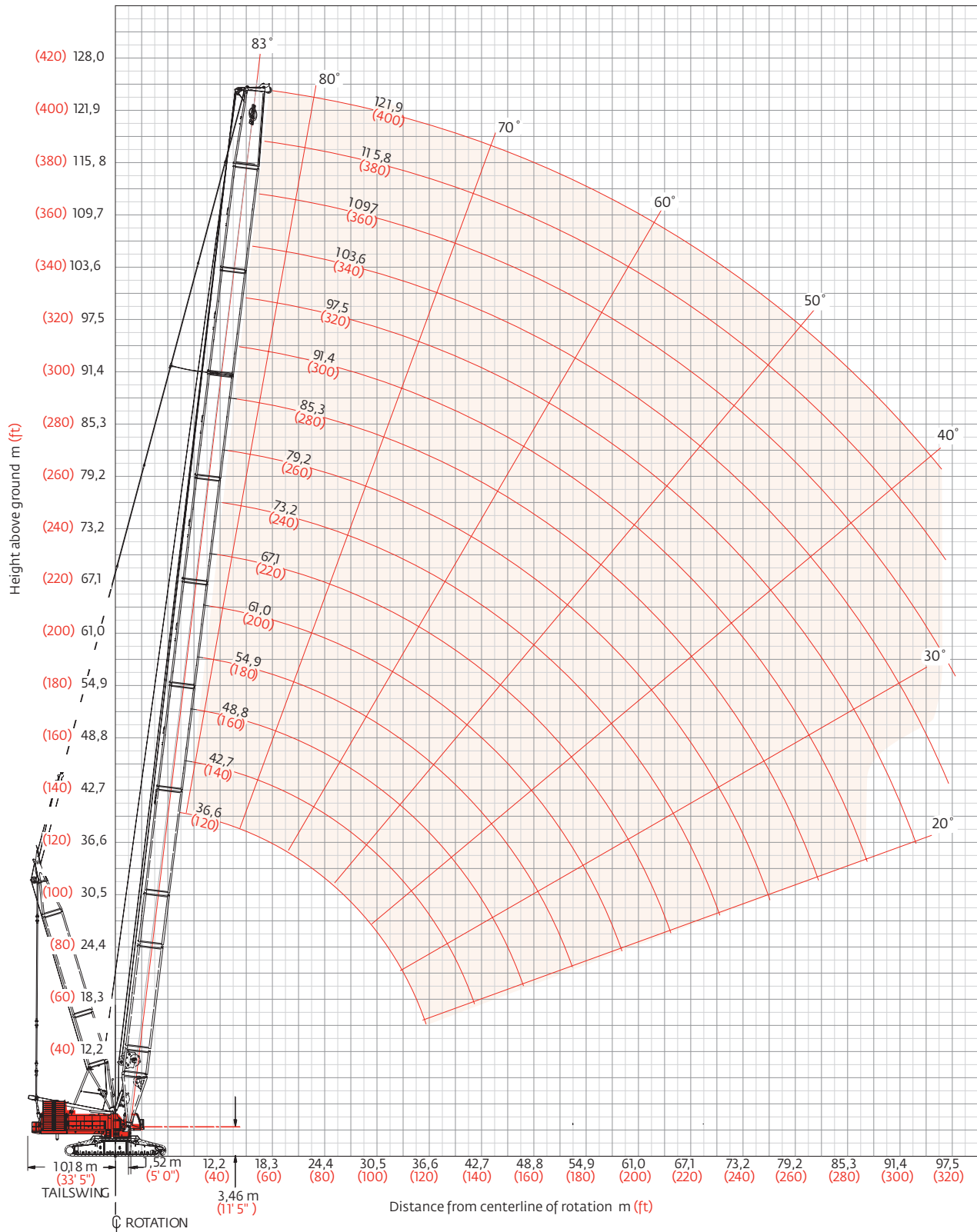
Boom length m (ft)

Radius m (ft)	36,6 (120)	42,7 (140)	48,8 (160)	54,9 (180)	61,0 (200)	67,1 (220)	73,2 (240)	79,2 (260)	85,4 (280)	91,4 (300)	97,5 (320)
7,3 (24)	600,0 (1322.8)										
8,0 (26)	512,8 (1145.7)										
9,0 (30)	458,8 (995.9)	457,5 (992.2)	– (987.9)								
11,0 (36)	375,5 (830.1)	373,9 (826.6)	372,1 (822.5)	370,5 (818.9)	370,4 (816.7)						
12,0 (40)	343,8 (745.8)	342,3 (742.5)	340,4 (738.4)	338,8 (734.8)	337,7 (732.6)	336,1 (728.6)	– (725.9)				
14,0 (45)	291,5 (657.7)	290,3 (654.9)	288,7 (651.5)	287,3 (648.4)	286,5 (646.6)	285,0 (643.1)	283,9 (640.8)	282,5 (636.7)	281,1 (633.7)		
16,0 (50)	250,0 (583.2)	248,8 (580.4)	247,2 (577.0)	245,8 (573.8)	244,9 (572.0)	243,3 (568.5)	242,3 (566.2)	240,6 (562.4)	239,4 (559.8)	238,4 (556.0)	236,3 (546.6)
18,0 (60)	218,3 (472.6)	217,0 (469.9)	215,5 (466.5)	214,0 (463.3)	213,0 (461.5)	211,6 (457.9)	210,5 (455.5)	208,8 (451.7)	207,6 (449.0)	205,8 (445.1)	206,1 (445.1)
22,0 (70)	172,4 (394.4)	171,3 (391.9)	169,8 (388.5)	168,3 (385.3)	167,5 (383.4)	165,8 (379.8)	164,7 (377.4)	163,0 (373.5)	161,7 (368.7)	159,9 (366.8)	160,0 (366.9)
24,0 (80)	155,4 (336.3)	154,3 (333.8)	152,8 (330.5)	151,3 (327.2)	150,4 (325.9)	148,8 (321.7)	147,7 (319.2)	145,9 (315.4)	144,7 (312.6)	142,9 (308.6)	142,9 (308.7)
28,0 (90)	126,0 (286.3)	125,3 (284.7)	124,2 (282.4)	123,2 (279.9)	122,7 (278.9)	121,5 (276.1)	120,7 (274.3)	119,1 (270.4)	117,9 (267.6)	116,2 (263.7)	116,2 (263.7)
30,0 (100)	114,0 (245.7)	113,3 (244.2)	112,2 (241.8)	111,1 (239.2)	110,6 (238.1)	109,3 (235.2)	108,4 (233.4)	107,1 (223.3)	106,1 (228.1)	104,7 (224.8)	104,9 (225.3)
34,0 (110)	94,8 (213.5)	94,1 (212.0)	93,1 (209.7)	91,8 (207.0)	91,3 (205.8)	89,9 (202.8)	89,1 (200.9)	87,6 (197.7)	86,6 (195.5)	85,1 (192.1)	85,3 (192.6)
36,0 (120)	86,9 (187.1)	86,3 (185.9)	85,3 (183.6)	84,1 (180.9)	83,5 (179.6)	82,1 (176.5)	81,2 (174.6)	79,7 (171.3)	78,7 (169.0)	77,2 (165.6)	77,4 (166.1)
40,0 (130)		73,3 (164.2)	72,3 (161.9)	71,1 (159.2)	70,5 (157.9)	69,1 (154.8)	68,2 (152.8)	66,7 (149.5)	65,6 (147.1)	64,0 (143.7)	64,2 (144.1)
42,0 (140)		67,8 (145.7)	66,8 (143.6)	65,6 (140.9)	65,0 (139.6)	63,5 (132.2)	62,7 (134.5)	61,1 (131.1)	60,1 (128.7)	58,5 (125.2)	58,7 (125.6)
50,0 (160)			– (114.2)	48,3 (111.7)	47,8 (110.4)	46,3 (107.2)	45,4 (105.3)	43,9 (101.8)	42,8 (99.4)	41,1 (95.8)	41,3 (96.2)
54,0 (180)				41,7 (89.1)	41,2 (88.1)	39,8 (84.9)	38,9 (83.0)	37,3 (79.5)	36,2 (77.1)	36,6 (73.5)	34,7 (73.8)
60,0 (200)						31,6 (67.3)	30,7 (65.4)	29,2 (61.9)	28,1 (59.5)	26,4 (55.9)	26,6 (56.2)
66,0 (220)							21,3 (50.4)	22,3 (46.5)	21,1 (43.8)	19,0 (39.2)	19,3 (40.1)
72,0 (240)								15,6 (31.8)	14,4 (29.4)	12,4 (24.9)	12,8 (25.8)
76,0 (250)								11,6 (25.2)	10,6 (23.0)	8,6 (18.6)	– (19.5)
78,0 (255)								– (21.9)	8,7 (19.9)	– (15.6)	– (16.6)

For complete chart, refer to www.cranelibrary.com.

No. 55-79A boom range diagram

No. 55-79A boom



No. 55-79A boom load charts

No. 55-79A boom

239 500 kg (528,000 lb) Counterweight 145 150 kg (320,000 lb) Carbody counterweight

360° Rating, kg (lb) x 1 000

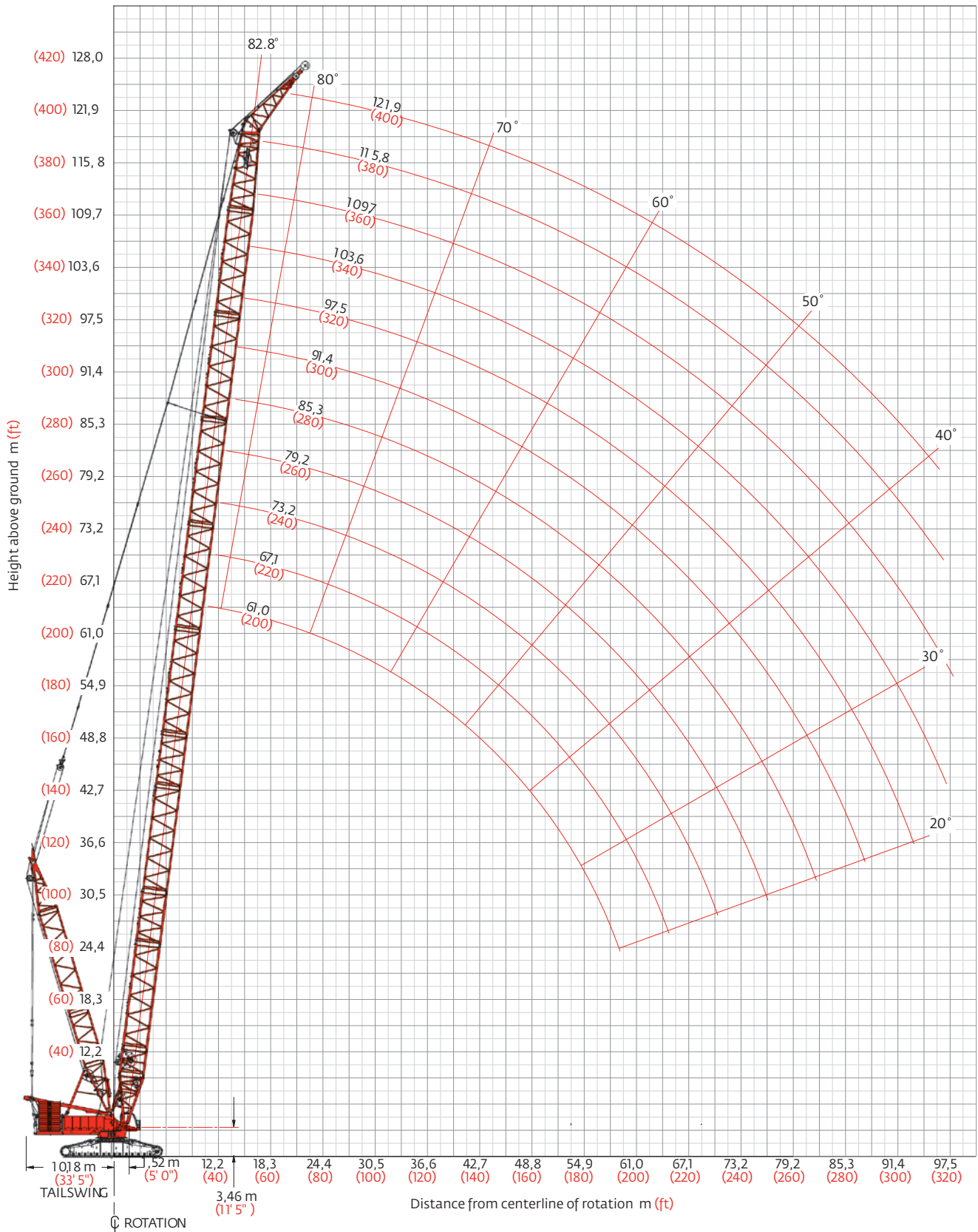
Boom length m (ft)

Radius m (ft)	36,6 (120)	42,7 (140)	48,8 (160)	61,0 (200)	67,1 (220)	73,2 (240)	85,3 (280)	91,4 (300)	97,5 (320)	109,7 (360)	115,8 (380)	121,9 (400)
Radius 7,9 (26)	453,5 (1000.0)											
9,1 (30)	453,5 (1000.0)	453,5 (1000.0)	426,0 (939.3)									
10,0 (34)	419,2 (891.6)	417,7 (888.6)	416,0 (884.8)									
12,0 (40)	349,5 (758.5)	348,2 (755.7)	346,6 (752.0)	340,7 (750.0)	309,8 (683.2)	– (633.7)						
14,0 (45)	297,2 (670.2)	296,2 (667.9)	294,8 (664.8)	294,2 (663.5)	287,1 (647.5)	268,0 (599.8)	220,7 (488.0)					
16,0 (50)	255,8 (595.8)	254,8 (593.6)	253,4 (590.5)	252,8 (589.2)	251,4 (582.7)	235,8 (543.9)	210,9 (481.2)	192,0 (430.5)	177,4 (397.5)			
18,0 (60)	224,1 (485.5)	223,1 (483.4)	221,8 (480.4)	221,2 (479.1)	220,6 (477.4)	211,8 (460.5)	186,8 (406.1)	177,3 (383.4)	167,3 (364.3)	135,3 (298.3)	– (257.4)	– (220.2)
20,0 (70)	199,0 (407.6)	198,0 (405.6)	196,6 (402.6)	196,1 (401.3)	195,3 (399.6)	192,6 (398.8)	169,7 (352.8)	159,9 (332.2)	151,7 (314.8)	133,7 (282.8)	116,0 (254.6)	99,8 (220.2)
24,0 (80)	161,5 (349.7)	160,6 (347.7)	159,3 (344.8)	158,7 (343.5)	157,9 (341.7)	157,5 (340.9)	143,8 (312.6)	135,2 (293.8)	127,8 (277.8)	114,7 (249.0)	109,5 (236.2)	99,5 (219.3)
26,0 (90)	146,0 (299.2)	145,6 (298.1)	144,7 (296.2)	144,4 (296.1)	143,6 (295.0)	143,2 (294.7)	133,7 (280.9)	125,6 (263.7)	118,7 (248.9)	106,0 (221.8)	100,3 (209.6)	95,6 (199.1)
30,0 (100)	120,0 (258.9)	119,5 (257.8)	118,6 (255.8)	118,5 (255.7)	118,0 (254.5)	117,8 (254.1)	116,5 (251.8)	110,0 (239.2)	103,8 (225.5)	92,1 (199.9)	86,8 (188.3)	82,1 (178.2)
36,0 (120)	91,1 (192.1)	92,7 (199.9)	91,7 (197.9)	91,6 (197.6)	91,1 (196.4)	90,9 (195.9)	89,8 (193.5)	89,0 (190.7)	87,2 (189.4)	76,7 (166.5)	71,9 (155.9)	67,6 (146.7)
42,0 (140)		74,2 (160.0)	73,4 (158.2)	73,3 (157.9)	72,7 (156.7)	72,5 (156.2)	71,4 (153.7)	75,5 (151.8)	70,0 (150.7)	65,4 (141.9)	60,9 (132.1)	57,0 (123.6)
48,0 (160)			59,9 (129.0)	59,9 (129.0)	59,3 (127.8)	59,2 (127.3)	58,0 (124.8)	57,2 (122.9)	56,6 (122.7)	54,9 (118.0)	52,4 (113.6)	48,9 (105.8)
54,0 (180)				49,7 (106.9)	49,2 (105.7)	49,0 (105.3)	47,8 (102.8)	47,0 (100.9)	46,4 (99.7)	44,7 (95.9)	43,8 (93.8)	42,2 (91.3)
60,0 (200)					41,1 (88.3)	41,0 (88.0)	39,8 (85.5)	39,0 (83.6)	38,4 (82.4)	36,7 (78.6)	35,8 (76.5)	35,1 (74.9)
66,0 (220)						34,5 (73.8)	33,4 (71.4)	32,5 (69.6)	32,0 (68.4)	30,3 (64.6)	29,3 (62.5)	28,6 (60.9)
72,0 (240)							28,0 (59.8)	27,2 (58.0)	26,6 (56.8)	24,9 (53.1)	24,0 (50.9)	23,2 (49.3)
78,0 (260)							23,5 (50.0)	22,7 (48.2)	22,2 (47.1)	20,4 (43.3)	19,5 (41.2)	18,8 (39.6)
84,0 (280)								18,8 (39.8)	18,3 (38.7)	16,6 (35.0)	15,7 (332.9)	14,9 (31.1)
88,0 (300)								16,4	16,0 (30.6)	14,3 (26.6)	13,1 (24.1)	12,2 (22.2)
92,0 (310)									13,5 (26.3)	11,7 (22.6)	10,5 (20.0)	9,7 (–)
96,0 (320)									10,9 (–)	9,3 (18.7)	8,2 (16.2)	7,4 (–)

For complete chart, refer to www.cranelibrary.com.

Extended upper boom point range diagram

No. 55-79A boom with 7,6 m (25 ft) extended upper boom point



Extended upper boom point load chart

No. 55-79A boom with 7,6 m (25 ft) extended upper boom point

239 500 kg (528,000 lb) Counterweight
145 150 kg (320,000 lb) Carbody counterweight

360° Rating, kg (lb) x 1 000

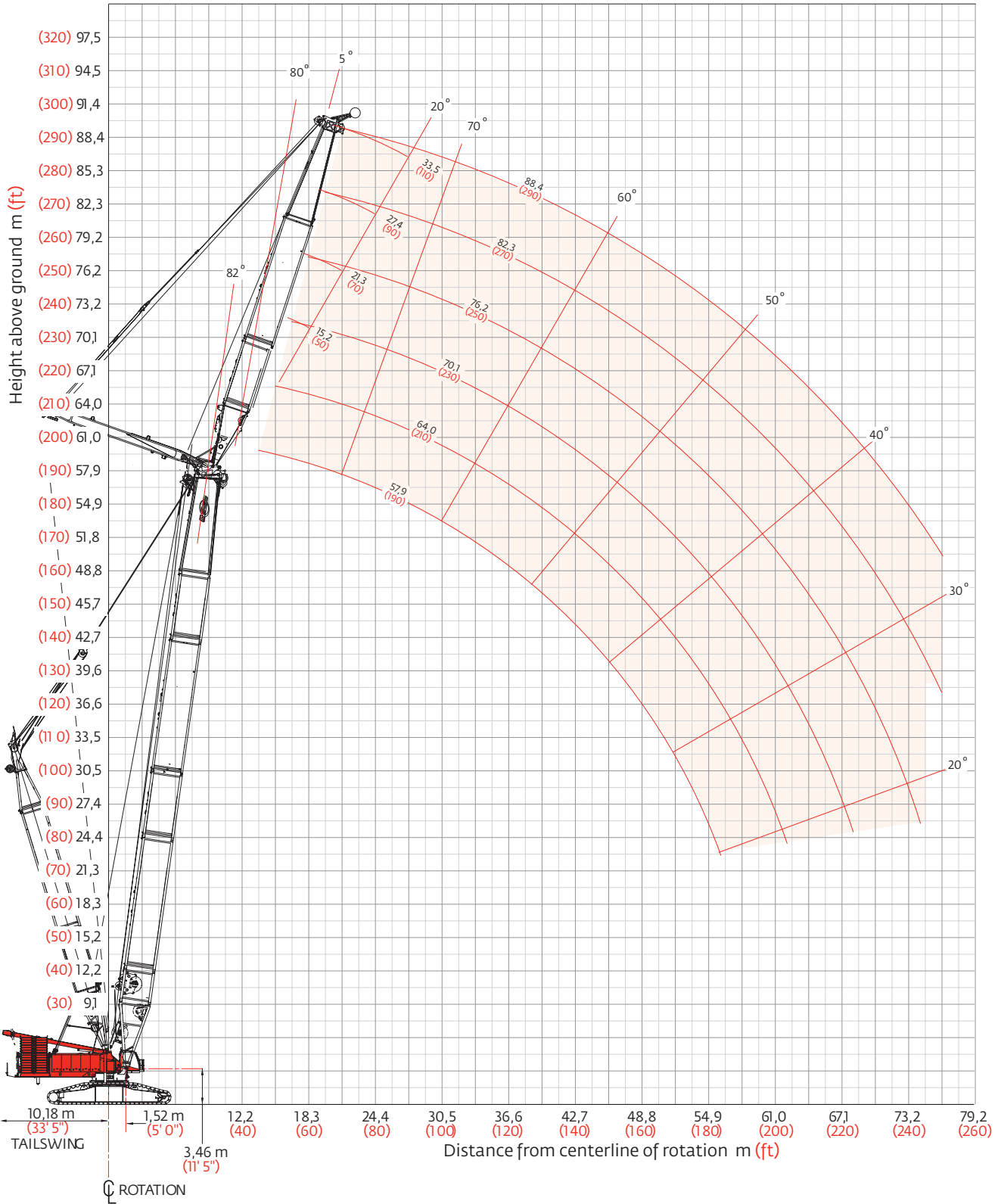
Boom length m (ft)

Radius m (ft)	61,0 (200)	73,2 (240)	85,3 (280)	97,5 (320)	109,7 (360)	121,9 (400)
Radius						
15,2 (50)	132,8 (292.8)					
16,0 (55)	132,8 (292.8)					
18,0 (60)	132,8 (292.8)	132,8 (292.8)				
20,0 (65)	132,8 (292.8)	132,8 (292.8)	132,8 (292.8)	132,7 (292.8)		
22,0 (70)	132,8 (292.8)	132,8 (292.8)	132,8 (292.8)	131,6 (291.9)	99,9 (220.9)	
24,0 (80)	132,8 (292.8)	132,8 (292.8)	132,8 (292.8)	124,9 (270.1)	99,3 (218.7)	76,2 (167.8)
26,0 (85)	132,8 (292.8)	132,8 (292.8)	129,5 (286.3)	115,5 (255.5)	98,6 (217.7)	75,6 (166.9)
30,0 (100)	123,6 (265.3)	122,8 (263.6)	114,0 (248.0)	101,2 (220.0)	89,2 (194.0)	74,7 (164.5)
32,0 (105)	112,5 (248.0)	111,7 (246.3)	107,6 (237.4)	95,4 (210.3)	84,1 (185.6)	74,2 (163.7)
34,0 (110)	103,3 (232.4)	102,5 (230.7)	101,5 (227.6)	90,1 (201.4)	79,7 (178.0)	72,8 (162.2)
36,0 (120)	95,4 (205.8)	94,6 (204.0)	93,5 (201.6)	85,4 (185.7)	75,6 (164.3)	68,4 (148.5)
38,0 (125)	88,4 (194.3)	87,6 (192.4)	86,5 (190.0)	81,2 (178.6)	71,9 (158.2)	64,8 (142.6)
40,0 (130)	82,2 (183.7)	81,3 (181.8)	80,2 (179.4)	77,3 (172.0)	68,6 (152.6)	61,3 (136.7)
42,0 (140)	76,6 (165.1)	75,7 (163.2)	74,6 (160.7)	73,2 (157.8)	65,4 (142.2)	58,2 (126.2)
46,0 (150)	67,1 (149.3)	66,2 (147.3)	65,0 (144.7)	63,7 (141.8)	59,7 (132.5)	52,6 (116.8)
50,0 (165)	59,1 (129.3)	58,3 (127.4)	57,1 (124.8)	55,7 (121.7)	54,1 (118.1)	47,7 (104.6)
54,0 (175)	52,5 (118.0)	51,6 (116.1)	50,4 (113.5)	49,0 (110.5)	47,3 (106.7)	43,5 (97.4)
58,0 (190)	46,7 (103.4)	45,9 (101.6)	44,7 (99.0)	43,3 (95.9)	41,6 (92.1)	39,6 (87.7)
62,0 (205)	– (30.5)	41,0 (89.3)	39,8 (86.7)	38,4 (83.6)	36,7 (79.8)	35,1 (76.2)
68,0 (225)		34,7 (75.4)	33,6 (72.9)	32,2 (69.9)	30,5 (66.1)	28,8 (62.5)
74,0 (240)		– (17.1)	28,4 (64.2)	27,0 (61.2)	25,3 (57.3)	23,6 (53.7)
86,0 (280)				18,8 (42.5)	17,1 (38.7)	15,5 (35.1)
98,0 (320)					10,0 (22.7)	8,0 (18.3)

For complete chart, refer to www.cranelibrary.com.

No. 79A fixed jib range diagram

No. 79A fixed jib on No. 55 or 55A boom



Fixed jib load charts

No. 79A fixed jib on No. 55 or 55A boom

239,500 kg (528,000 lb) Crane counterweight 145,150 kg (320,000 lb) Carbody counterweight

360° Rating, kg (lb) x 1 000

		5° Offset					20° Offset				
		Boom length m (ft)					Boom length m (ft)				
Radius m (ft)		42,7 (140)	48,8 (160)	54,9 (180)	61,0 (200)	67,1 (220)	42,7 (140)	48,9 (160)	54,9 (180)	61,0 (200)	67,1 (220)
Jib length 15,2 m (50 ft)	Radius 13,7 (45)	295,0 (650.4)									
	16,8 (55)	246,0 (512.6)	245,6 (510.1)	244,7 (508.0)	228,8 (504.5)	227,7 (72.4)					
	22,0 (70)	165,7 (380.1)	164,3 (377.1)	163,0 (374.3)	167,2 (370.9)	160,1 (82.3)	170,4 (390.7)	169,3 (388.5)	168,5 (386.7)	167,2 (384.0)	166,5 (381.8)
	26,0 (90)	133,3 (273.5)	131,8 (270.0)	130,3 (266.8)	133,5 (263.4)	127,2 (77.8)	137,0 (281.0)	135,8 (278.3)	134,7 (275.8)	133,5 (273.0)	132,2 (270.2)
	36,0 (120)	79,8 (171.3)	78,5 (168.3)	77,1 (165.3)	79,3 (162.5)	74,5 (56.2)	82,3 (176.6)	81,2 (174.2)	80,2 (171.9)	79,3 (169.8)	78,1 (167.3)
	42,0 (140)	60,4 (129.2)	58,9 (126.0)	57,5 (122.8)	56,2 (120.0)	54,7 (40.2)	62,1 (132.9)	61,0 (130.3)	59,8 (127.7)	58,8 (125.6)	57,5 (122.8)
	48,0 (160)	46,1 (98.3)	44,6 (95.1)	43,1 (91.7)	41,9 (89.0)	40,3 (29.6)	47,2 (100.6)	46,1 (98.1)	44,8 (95.3)	43,9 (93.2)	42,5 (90.2)
	54,0 (180)	34,6 (72.7)	33,4 (70.0)	31,7 (66.3)	30,4 (63.5)	28,3 (20.3)		34,5 (72.4)	33,2 (69.6)	32,3 (67.7)	30,4 (63.5)
	60,0 (200)		22,8 (47.1)	21,3 (43.9)	20,2 (41.4)	18,2 (12.8)			22,3 (45.7)	21,6 (44.2)	19,8 (40.5)
	68,0 (220)			- (24.6)	9,1 (22.8)	- (8.8)					8,2 (20.9)
72,0 (240)											
Jib length 21,3 m (70 ft)	Radius 13,7 (45)										
	16,0 (55)	249,4 (518.4)	- (516.6)								
	22,0 (70)	167,8 (384.8)	166,6 (382.3)	165,6 (380.1)	163,9 (376.4)		173,4 (397.5)	173,0 (396.1)			
	26,0 (90)	135,1 (277.4)	133,8 (274.3)	132,5 (271.4)	130,8 (267.7)		139,6 (286.6)	138,7 (284.4)	137,9 (282.4)	136,5 (279.5)	
	36,0 (120)	81,8 (175.6)	80,5 (172.8)	79,3 (170.1)	77,9 (167.0)		85,0 (182.4)	84,1 (180.4)	83,2 (178.4)	82,1 (176.0)	
	42,0 (140)	62,1 (133.1)	60,8 (130.0)	59,4 (126.9)	58,0 (123.8)		64,5 (138.2)	63,4 (135.7)	62,3 (133.3)	61,3 (130.9)	
	48,0 (160)	47,8 (102.0)	46,3 (98.7)	44,8 (95.4)	43,4 (92.4)		49,5 (105.6)	48,3 (103.0)	47,2 (100.4)	46,0 (97.9)	
	54,0 (180)	36,7 (78.1)	35,2 (74.7)	33,6 (70.8)	32,2 (67.5)		37,9 (80.4)	35,2 (77.8)	35,4 (75.0)	34,4 (72.7)	
	60,0 (200)		25,1 (52.2)	23,3 (48.3)	21,9 (45.1)				25,1 (54.7)	25,0 (51.8)	24,0 (49.5)
	68,0 (220)			- (32.8)	12,1 (29.4)	10,8 (26.6)					12,2 (29.7)
72,0 (240)											

For complete chart, refer to www.cranelibrary.com.

Fixed jib load charts

No. 79A fixed jib on No. 55 or 55A boom

113 040 kg (249,200 lb) Crane counterweight 54 430 kg (120,000 lb) Carbody counterweight

360° Rating, kg (lb) x 1 000

5° Offset

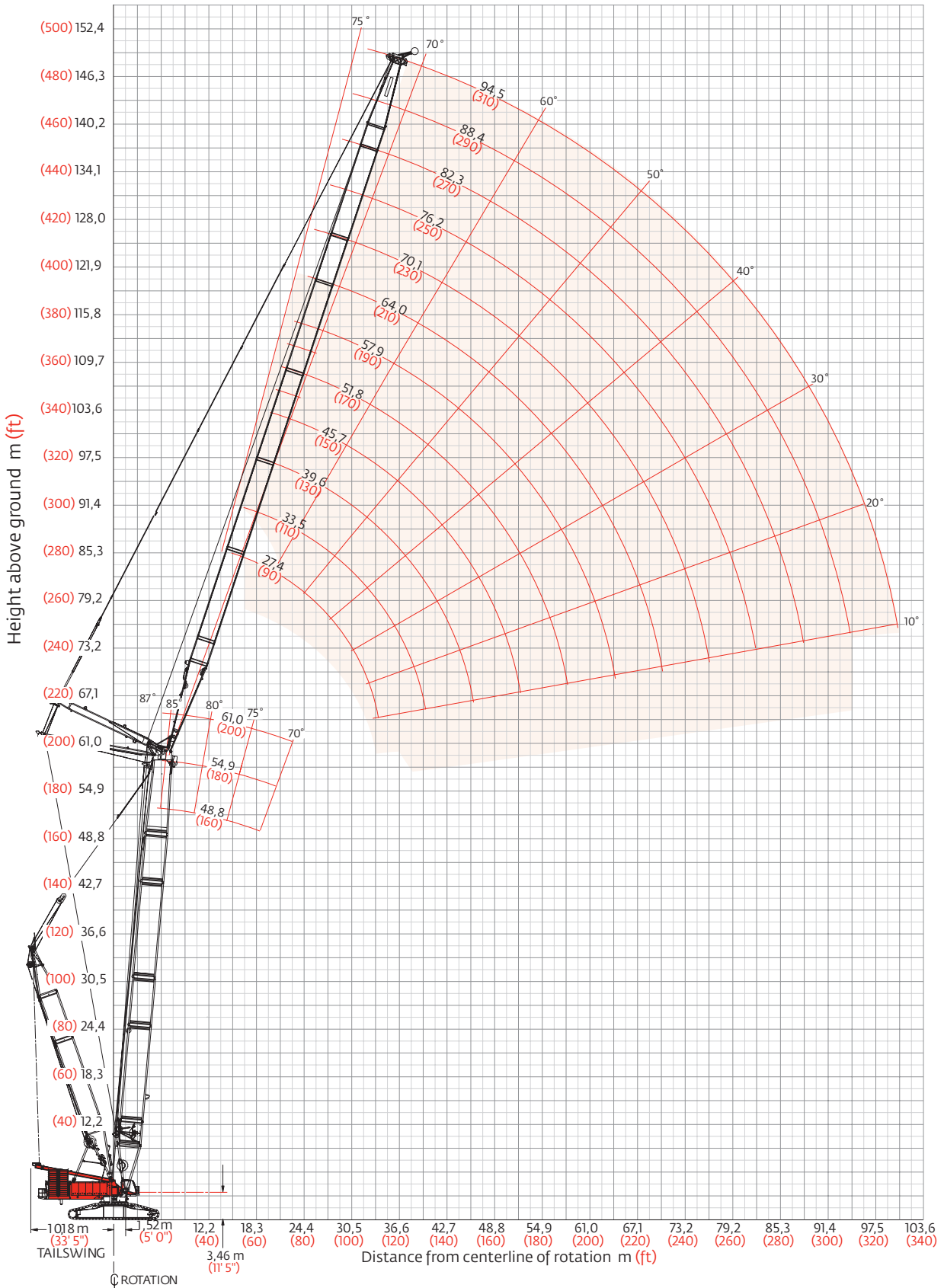
20° Offset

		Boom length m (ft)				Boom length m (ft)			
Radius m (ft)		42,7 (140)	48,8 (160)	54,9 (180)	61,0 (200)	42,7 (140)	48,9 (160)	54,9 (180)	61,0 (200)
jib length 27,4 m (90 ft)	Radius 13,7 (45)								
	16,0 (55)	- (520.8)							
	22,0 (70)	168,7 (386.8)	167,7 (384.7)	166,8 (382.9)	165,0 (370.9)				
	26,0 (90)	135,9 (279.0)	134,7 (276.2)	133,6 (273.6)	131,8 (269.7)	141,2 (289.9)	141,2 (288.2)	139,9 (286.6)	138,5 (283.6)
	36,0 (120)	82,9 (178.0)	81,7 (175.3)	80,6 (172.8)	79,0 (169.4)	86,8 (186.3)	86,8 (184.5)	85,3 (182.9)	84,1 (180.3)
	42,0 (140)	63,1 (135.3)	61,8 (132.2)	60,4 (129.3)	58,9 (125.9)	66,1 (141.7)	66,1 (139.4)	64,2 (137.3)	63,0 (134.6)
	48,0 (160)	48,7 (104.1)	47,2 (100.8)	45,8 (97.6)	44,3 (94.2)	51,1 (109.0)	51,1 (106.4)	48,8 (103.9)	47,5 (101.2)
	54,0 (180)	37,7 (80.2)	36,2 (76.8)	34,6 (73.4)	33,0 (69.3)	37,7 (83.9)	39,4 (81.1)	37,0 (78.4)	35,8 (75.7)
	60,0 (200)	28,1 (58.9)	26,4 (55.1)	24,6 (51.0)	22,8 (47.3)	28,1 (62.3)	28,5 (59.5)	27,0 (56.2)	25,7 (53.3)
	68,0 (220)	16,7 (39.8)	15,3 (36.5)	13,5 (32.4)	11,8 (28.8)	16,7 -	16,5 (39.3)	15,0 (36.1)	13,9 (33.5)
	72,0 (240)		10,4 (20.0)	8,7 (16.4)				9,9 (18.8)	8,8 (16.6)
jib length 33,5 m (110 ft)	Radius 13,7 (45)								
	16,0 (55)								
	22,0 (70)	169,2 (387.8)	168,3 (386.1)	167,9 (384.6)					
	26,0 (90)	136,4 (280.2)	135,3 (277.6)	134,3 (275.3)		142,3 (292.5)	141,9 (291.2)	- (290.1)	
	36,0 (120)	83,8 (180.0)	82,7 (177.5)	81,7 (175.2)		88,3 (189.6)	87,6 (188.1)	87,1 (186.9)	
	42,0 (140)	64,1 (137.4)	62,7 (134.4)	61,5 (131.6)		67,6 (145.0)	66,7 (142.9)	65,9 (141.0)	
	48,0 (160)	49,7 (106.3)	48,2 (103.0)	46,9 (99.9)		52,6 (112.3)	51,5 (109.9)	50,4 (107.5)	
	54,0 (180)	38,7 (82.5)	37,2 (79.1)	35,7 (75.7)		41,0 (87.3)	39,8 (84.5)	38,6 (81.9)	
	60,0 (200)	29,7 (62.4)	27,9 (58.4)	26,0 (54.2)		31,8 (67.3)	30,5 (64.2)	29,1 (60.9)	
	68,0 (220)	18,8 (44.1)	17,0 (40.1)	15,0 (35.7)		20,3 (47.6)	17,0 (44.6)	17,3 (41.1)	
	76,0 (250)		8,0 (17.4)				8,0 -	7,7 (16.5)	

For complete chart, refer to www.cranelibrary.com.

No. 79A luffing jib range diagram

No. 79A luffing jib on No. 55 or 55A boom



Luffing jib load charts

Luffing jib No. 79A on No. 55 or 55A boom

239 500 kg (528,000 lb) Counterweight 145 150 kg (320,000 lb) Carbody counterweight

360° Rating, kg (lb) x 1 000

87° Boom angle

		Boom length m (ft)				Boom length m (ft)	
		Radius m (ft)	61,0 (200)			Radius m (ft)	61,0 (200)
Luffing jib length 26,0 m (90 ft)	Radius						
	16,0 (55)	225,3 (537.4)		16,0 (55)	– (527.7)		
	18,0 (60)	200,3 (488.0)		18,0 (60)	224,3 (486.9)		
	20,0 (70)	180,1 (411.0)		20,0 (70)	199,9 (410.1)		
	24,0 (80)	163,2 (353.5)		24,0 (80)	162,9 (352.9)		
	26,0 (90)	149,0 (308.8)		26,0 (90)	148,8 (308.6)		
	30,0 (100)	126,0 (272.8)		30,0 (100)	126,1 (273.1)		
	36,0 (120)			36,0 (120)	101,5 (219.5)		
	42,0 (140)			42,0 (140)			
	48,0 (160)			48,0 (160)			
54,0 (180)			54,0 (180)				
60,0 (200)			60,0 (200)				
		Boom length m (ft)				Boom length m (ft)	
		Radius m (ft)	61,0 (200)			Radius m (ft)	61,0 (200)
Luffing jib length 45,7 m (150 ft)	Radius						
	16,0 (55)			16,0 (55)			
	18,0 (60)			18,0 (60)			
	20,0 (70)	176,5 (380.4)		20,0 (70)			
	24,0 (80)	160,9 (348.8)		24,0 (80)	131,8 (289.2)		
	26,0 (90)	146,9 (304.7)		26,0 (90)	127,9 (275.3)		
	30,0 (100)	124,5 (269.6)		30,0 (100)	119,1 (260.2)		
	36,0 (120)	100,3 (217.0)		36,0 (120)	98,3 (212.6)		
	42,0 (140)	82,7 (178.4)		42,0 (140)	81,0 (175.0)		
	48,0 (160)	68,4 (140.7)		48,0 (160)	67,1 (144.7)		
54,0 (180)			54,0 (180)	56,4 (121.5)			
				47,8 (102.8)			
		Boom length m (ft)				Boom length m (ft)	
		Radius m (ft)	61,0 (200)			Radius m (ft)	61,0 (200)
Luffing jib length 57,9 m (190 ft)	Radius						
	16,0 (55)			16,0 (55)			
	18,0 (60)			18,0 (60)			
	20,0 (70)			20,0 (70)			
	24,0 (80)			24,0 (80)	131,8 (289.2)		
	26,0 (90)			26,0 (90)	127,9 (275.3)		
	30,0 (100)			30,0 (100)	119,1 (260.2)		
	36,0 (120)			36,0 (120)	98,3 (212.6)		
	42,0 (140)			42,0 (140)	81,0 (175.0)		
	48,0 (160)			48,0 (160)	67,1 (144.7)		
54,0 (180)			54,0 (180)	56,4 (121.5)			

For complete chart, refer to www.cranelibrary.com.

Luffing jib load charts

Luffing jib No. 79A on No. 55 or 55A boom

239 500 kg (529,007 lb) Counterweight 145 150 kg (320,000 lb) Carbody counterweight

360° Rating, kg (lb) x 1 000

85° Boom angle

		Boom length m (ft)		
		48,8 (160)	54,9 (180)	61,0 (200)
Luffing jib length 27,4 m (90 ft)	Radius 16,8 (55)	240,7 (530.7)		
	18,0 (60)	222,8 (482.0)	– (478.0)	225,3 (474.1)
	20,0 (70)	197,9 (406.0)	196,2 (402.6)	200,3 (399.3)
	24,0 (80)	161,2 (349.2)	159,9 (346.3)	163,2 (343.5)
	26,0 (90)	147,2 (305.1)	145,9 (302.6)	149,0 (300.1)
	30,0 (100)	124,6 (269.6)	123,5 (267.4)	126,0 (265.3)
	34,0 (115)			– (223.2)
	42,0 (140)			
	44,0 (150)			
	46,0 (155)			

		Boom length m (ft)		
		48,8 (160)	54,9 (180)	61,0 (200)
Luffing jib length 36,9 m (130 ft)	Radius 16,8 (55)			
	18,0 (60)			
	20,0 (70)	– (402.0)	180,7 (398.4)	– (394.9)
	24,0 (80)	159,6 (345.7)	158,2 (342.6)	156,7 (339.5)
	26,0 (90)	145,7 (302.2)	144,4 (299.4)	143,1 (296.7)
	30,0 (100)	123,5 (267.4)	122,3 (264.9)	121,2 (262.5)
	34,0 (115)	106,5 (226.6)	105,5 (224.4)	104,6 (222.4)
	42,0 (140)	80,8 (174.4)	80,4 (173.5)	80,0 (172.5)
	44,0 (150)	75,6 (157.6)	75,3 (157.0)	74,9 (156.2)
	46,0 (155)			70,1 (148.4)

		Boom length m (ft)	
		48,8 (160)	54,9 (180)
Luffing jib length 70,1 m (230 ft)	Radius		
	29,0 (95)	132,5 (271.7)	
	30,5 (100)	118,2 (255.5)	114,6 (252.7)
	36,0 (120)	94,3 (204.0)	93,3 (201.7)
	48,0 (160)	63,2 (136.2)	62,7 (135.2)
	60,0 (200)	44,7 (96.0)	44,3 (95.2)
	70,0 (230)	34,2 (75.2)	33,9 (74.6)
	76,0 (250)	29,0 (63.7)	28,8 (63.2)
	82,0 (270)		
	88,0 (290)		
	100,0 (330)		

		Boom length m (ft)	
		48,8 (160)	54,9 (180)
Luffing jib length 94,5 m (310 ft)	Radius		
	29,0 (95)		
	30,5 (100)		
	36,0 (120)	– (153.0)	
	48,0 (160)	58,9 (126.7)	58,4 (125.5)
	60,0 (200)	40,4 (86.7)	40,0 (85.7)
	70,0 (230)	29,9 (65.7)	29,1 (64.0)
	76,0 (250)	24,6 (53.9)	23,9 (52.4)
	82,0 (270)	– (43.8)	– (42.4)
	88,0 (290)	16,1 (35.0)	15,5 (33.7)
	100,0 (330)	9,2 (19.7)	8,7 (18.7)

For complete chart, refer to www.cranelibrary.com.

Luffing jib load charts

Luffing jib No. 79A on No. 55 or 55A boom

239 500 kg (529,007 lb) Counterweight 145 150 kg (320,000 lb) Carbody counterweight

360° Rating, kg (lb) x 1 000

80° Boom angle

Radius m (ft)	Boom length m (ft)		
	48,0 (160)	54,9 (180)	61,0 (200)
Luffing jib length 27,4 m (90 ft)			
26,0 (90)	139,1 (288.5)	136,5 (283.1)	134,0 (277.9)
30,0 (100)	117,9 (255.2)	115,7 (250.4)	113,5 (245.7)
36,0 (120)	94,0 (202.6)	92,6 (199.6)	91,0 (196.5)
42,0 (140)			
48,0 (160)			
54,0 (180)			
60,0 (200)			
64,0 (210)			
66,0 (220)			
70,0 (230)			

Radius m (ft)	Boom length m (ft)		
	48,0 (160)	54,9 (180)	61,0 (200)
Luffing jib length 36,9 m (130 ft)			
26,0 (90)			
30,0 (100)	116,0 (251.0)	113,6 (245.8)	– (240.8)
36,0 (120)	93,1 (200.8)	91,2 (197.2)	89,4 (193.5)
42,0 (140)	75,2 (162.3)	73,9 (159.3)	72,5 (156.3)
48,0 (160)	62,0 (133.5)	60,9 (131.2)	59,8 (128.7)
54,0 (180)			
60,0 (200)			
64,0 (210)			
66,0 (220)			
70,0 (230)			

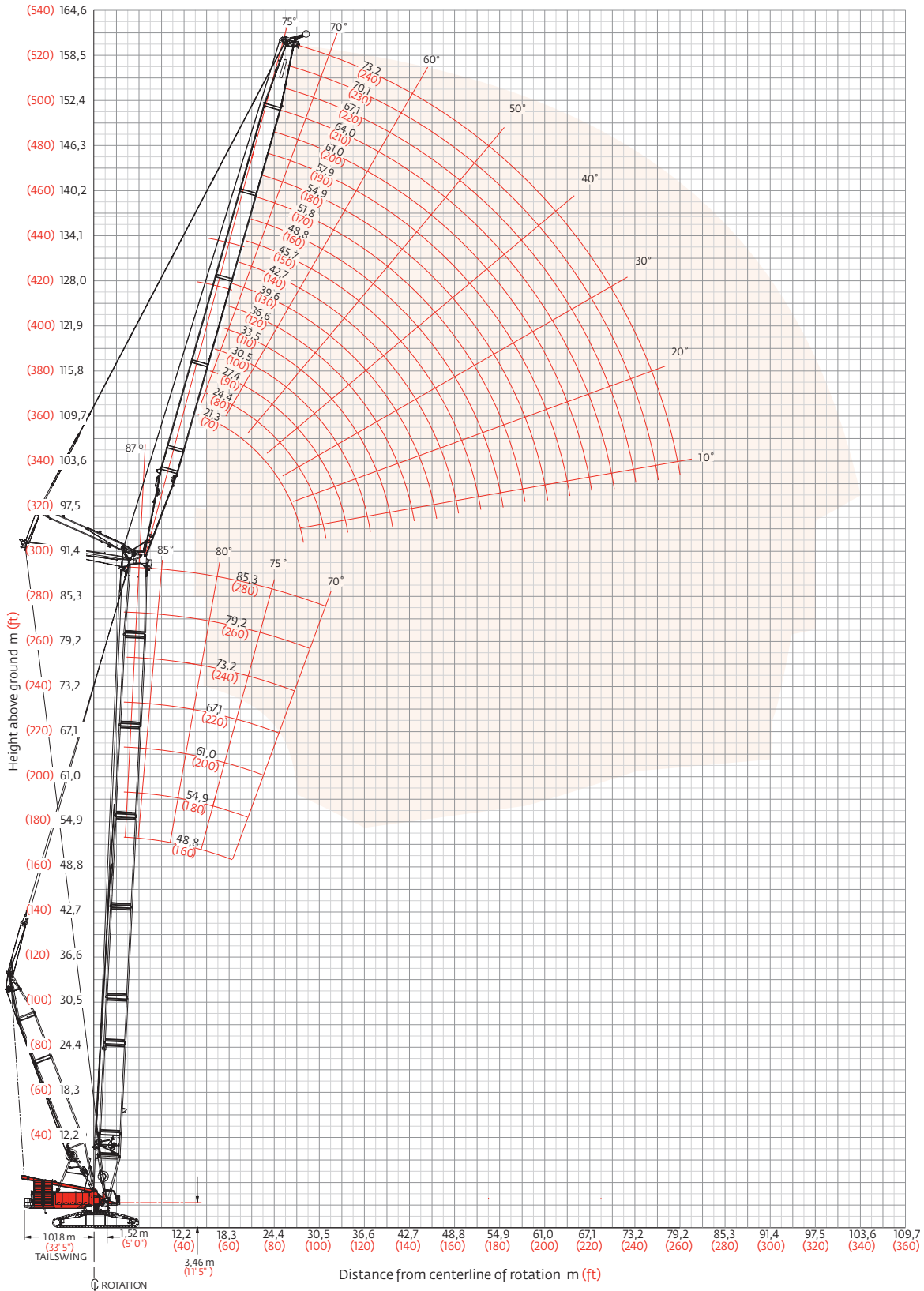
Radius m (ft)	Boom length m (ft)	
	48,0 (160)	54,9 (180)
Luffing jib length 70,1 m (230 ft)		
38,0 (130)	– (168.4)	
40,0 (135)	75,3 (159.5)	– (155.8)
44,0 (145)	65,5 (143.5)	64,0 (140.2)
48,0 (160)	57,5 (123.7)	56,1 (120.7)
54,0 (180)	47,8 (102.8)	46,6 (100.2)
66,0 (220)	34,0 (73.0)	33,0 (70.9)
78,0 (260)	24,2 (51.4)	23,0 (48.7)
82,0 (270)		– (43.3)
88,0 (290)		
94,0 (310)		

Radius m (ft)	Boom length m (ft)	
	48,0 (160)	54,9 (180)
Luffing jib length 82,3 m (270 ft)		
38,0 (130)		
40,0 (135)		
44,0 (145)	– (138.2)	
48,0 (160)	51,1 (118.5)	53,6 (115.3)
54,0 (180)	45,5 (97.7)	44,2 (94.8)
66,0 (220)	31,7 (67.6)	30,0 (64.1)
78,0 (260)	21,5 (45.5)	20,1 (42.6)
82,0 (270)	– (40.9)	– (38.1)
88,0 (290)	14,9 (32.5)	13,7 (29.9)
94,0 (310)		– (21.9)

For complete chart, refer to www.cranelibrary.com.

No. 44 luffing jib range diagram

No. 44 luffing jib on No. 55/79A boom



Luffing jib load charts

Luffing jib No. 44 on No. 55-79A boom

239 500 kg (528,000 lb) Counterweight 145 150 kg (320,000 lb) Carbody counterweight

360° Rating, kg (lb) x 1 000

85° / 87°* Boom angle

		Boom length m (ft)							Boom length m (ft)				
		48,8 (160)	54,9 (180)	61,0* (200)*	73,2* (240)*	85,4* (280)*			48,8 (160)	54,9 (180)	61,0* (200)*	73,2* (240)*	85,4* (280)*
Luffing jib length 21,3 m (70 ft)	Radius 13,7 (45)			194,7 (429.3)	167,6 (369.5)			Radius 13,7 (45)					
	15,2 (50)	247,5 (545.8)	216,6 (477.7)	– (415.9)	– (359.8)	123,3 (272.0)		15,0 (50)					
	18,0 (60)	189,2 (405.1)	197,4 (427.4)	170,8 (368.2)	150,0 (327.7)	119,5 (262.7)		18,0 (60)			144,8 (317.7)	115,1 (253.5)	– (192.3)
	24,0 (80)	117,7 (253.3)	122,2 (262.7)	109,9 (236.6)	115,1 (247.0)	101,0 (220.1)		24,0 (80)	132,3 (285.0)	135,1 (294.9)	123,2 (266.0)	109,1 (238.2)	83,4 (183.4)
	30,0 (100)							30,0 (100)	94,4 (203.4)	97,0 (208.8)	89,4 (192.7)	92,9 (199.3)	77,4 (168.8)
	36,0 (120)							36,0 (120)	72,0 (155.2)	73,6 (158.6)	68,7 (148.2)	70,7 (152.4)	67,6 (147.0)
	48,0 (160)							48,0 (160)					
	62,0 (200)							62,0 (200)					
	66,0 (220)							66,0 (220)					
	74,0 (240)							74,0 (240)					
78,0 (260)							78,0 (260)						
		Boom length m (ft)							Boom length m (ft)				
		48,8 (160)	54,9 (180)	61,0* (200)*	73,2* (240)*	85,4* (280)*			48,8 (160)	54,9 (180)	61,0* (200)*	73,2* (240)*	85,4* (280)*
Luffing jib length 54,9 m (180 ft)	Radius 30,0 (100)	86,5 (188.7)	85,8 (187.4)	80,7 (176.2)	71,9 (158.5)	56,5 (124.4)		Radius 30,0 (100)	– (128.0)	– (123.5)	53,1 (116.8)	46,0 (101.5)	38,6 (85.1)
	32,0 (110)	82,7 (176.3)	82,3 (175.7)	77,4 (165.6)	70,8 (152.8)	56,0 (122.3)		32,0 (110)	– (125.9)	55,6 (121.6)	52,5 (114.9)	45,8 (100.6)	38,3 (84.2)
	36,0 (120)	74,2 (159.3)	75,1 (162.8)	70,6 (152.3)	66,8 (146.0)	53,6 (117.2)		36,0 (120)	55,0 (119.8)	54,3 (119.0)	51,2 (112.3)	45,3 (99.9)	37,8 (83.4)
	46,0 (140)	51,2 (126.6)	52,1 (129.0)	49,3 (121.6)	50,3 (124.3)	46,2 (107.1)		46,0 (140)	43,9 (104.8)	44,0 (104.7)	41,7 (99.1)	41,0 (96.8)	35,5 (81.3)
	48,0 (160)	47,9 (103.3)	48,8 (105.0)	46,2 (99.6)	47,2 (101.6)	44,8 (97.8)		48,0 (160)	41,8 (90.6)	42,0 (91.1)	39,8 (86.3)	39,4 (85.4)	34,7 (75.9)
	54,0 (180)	39,8 (85.7)	40,5 (87.1)	38,5 (82.8)	39,2 (84.4)	38,9 (83.9)		54,0 (180)	36,0 (77.8)	36,3 (78.5)	34,5 (74.6)	34,5 (74.6)	32,3 (70.5)
	62,0 (200)	– (59.6)	– (66.9)		– (58.8)	– (68.7)		62,0 (200)	29,3 (66.5)	29,7 (67.3)	28,2 (64.0)	28,5 (64.5)	28,4 (64.3)
	66,0 (220)							66,0 (220)	26,3 (56.6)	26,7 (57.3)	25,4 (54.6)	25,7 (55.3)	25,9 (55.7)
	74,0 (240)							74,0 (240)	21,2 (48.0)	21,5 (48.7)	20,5 (46.4)	20,9 (47.2)	21,2 (47.8)
	78,0 (260)							78,0 (260)	16,9 (31.2)	19,0 (35.9)		17,8 (31.1)	19,0 (37.5)

For complete chart, refer to www.cranelibrary.com.

Luffing jib load charts

Luffing jib No. 44 on No. 55-79A boom

239 500 kg (528,000 lb) Counterweight 145 150 kg (320,000 lb) Carbody counterweight

360° Rating, kg (lb) x 1 000

80° Boom angle

		Boom length m (ft)							Boom length m (ft)				
		48,8 (160)	54,9 (180)	61,0 (200)	73,2 (240)	85,4 (280)			48,8 (160)	54,9 (180)	61,0 (200)	73,2 (240)	85,4 (280)
Luffing jib length 21,3 m (70 ft)	Radius 20,0 (70)	-	-	-	-	-	Luffing jib length 36,6 m (120 ft)	Radius 20,0 (70)	-	-	-	-	-
	22,0 (75)	178,3 (376.7)	176,3 (372.5)	-	-	-		22,0 (75)	-	-	-	-	-
	24,0 (80)	160,9 (347.6)	160,2 (347.3)	158,0 (341.9)	-	-		24,0 (80)	-	-	-	-	-
	26,0 (90)	138,9 (276.7)	146,8 (298.7)	144,1 (298.6)	124,8 (258.6)	-		26,0 (90)	145,1 (305.8)	-	-	-	-
	30,0 (100)	106,2 (227.5)	113,6 (243.2)	121,1 (260.9)	105,5 (228.4)	92,7 (200.6)		30,0 (100)	119,9 (256.6)	124,2 (269.1)	120,1 (259.9)	-	-
	32,0 (110)	90,6 -	100,4 (173.3)	107,3 (215.7)	97,7 (203.7)	85,8 (178.7)		32,0 (110)	106,8 (217.4)	113,3 (229.7)	111,4 (232.6)	95,6 (199.5)	82,1 (173.5)
	36,0 (120)	-	-	-	84,2 (181.8)	74,1 (160.2)		36,0 (120)	87,3 (187.6)	91,8 (197.1)	96,4 (207.5)	83,0 (179.7)	72,1 (156.1)
	42,0 (140)	-	-	-	-	-		42,0 (140)	67,5 (145.0)	70,5 (151.3)	73,6 (157.9)	68,8 (148.8)	59,5 (128.7)
	48,0 (160)	-	-	-	-	-		48,0 (160)	-	53,2 (104.3)	58,1 (124.4)	58,0 (125.3)	50,0 (108.1)
	50,0 (170)	-	-	-	-	-		50,0 (170)	-	-	-	54,9 (114.8)	47,3 (99.3)

		Boom length m (ft)							Boom length m (ft)				
		48,8 (160)	54,9 (180)	61,0 (200)	73,2 (240)	85,4 (280)			48,8 (160)	54,9 (180)	61,0 (200)	73,2 (240)	85,4 (280)
Luffing jib length 54,9 m (180 ft)	Radius -	-	-	-	-	-	Luffing jib length 73,2 m (240 ft)	Radius -	-	-	-	-	-
	36,0 (120)	83,8 (182.6)	84,2 (183.7)	84,1 (183.5)	-	-		36,0 (120)	-	-	-	-	-
	42,0 (140)	69,3 (148.9)	72,5 (155.2)	74,7 (162.0)	66,7 (144.2)	56,4 (123.7)		42,0 (140)	53,2 (115.7)	53,0 (116.3)	-	-	-
	48,0 (160)	55,5 (119.4)	57,6 (123.8)	59,8 (128.5)	56,3 (121.7)	48,0 (103.8)		48,0 (160)	46,7 (101.1)	47,2 (102.5)	47,6 (103.5)	44,0 (97.1)	37,1 (82.0)
	54,0 (180)	45,6 (98.0)	47,2 (101.3)	48,8 (104.8)	48,2 (104.1)	40,9 (88.3)		54,0 (180)	40,4 (87.4)	41,3 (89.2)	41,9 (90.7)	42,7 (92.5)	37,1 (81.8)
	62,0 (200)	35,9 (81.7)	37,0 (84.3)	38,2 (86.9)	39,8 (90.0)	33,5 (75.9)		62,0 (200)	33,1 (75.0)	33,9 (76.9)	34,7 (78.5)	36,0 (81.3)	31,0 (70.3)
	68,0 (230)	-	-	-	34,0 (65.2)	29,0 (60.9)		68,0 (230)	28,3 (59.1)	29,1 (60.8)	29,8 (62.4)	31,2 (65.5)	26,7 (56.1)
	78,0 (260)	-	-	-	-	-		78,0 (260)	21,7 (46.3)	22,3 (47.7)	23,0 (49.1)	24,3 (51.9)	21,0 (45.1)
	84,0 (280)	-	-	-	-	-		84,0 (280)	-	18,6 (30.0)	19,5 (41.1)	20,8 (44.3)	18,2 (38.9)
	88,0 (290)	-	-	-	-	-		88,0 (290)	-	-	-	17,3 (36.1)	16,5 (36.0)

For complete chart, refer to www.cranelibrary.com.

Luffing jib load charts

Luffing jib No. 44 on No. 55-79A boom

239 500 kg (528,000 lb) Counterweight 145 150 kg (320,000 lb) Carbody counterweight

360° Rating, kg (lb) x 1 000

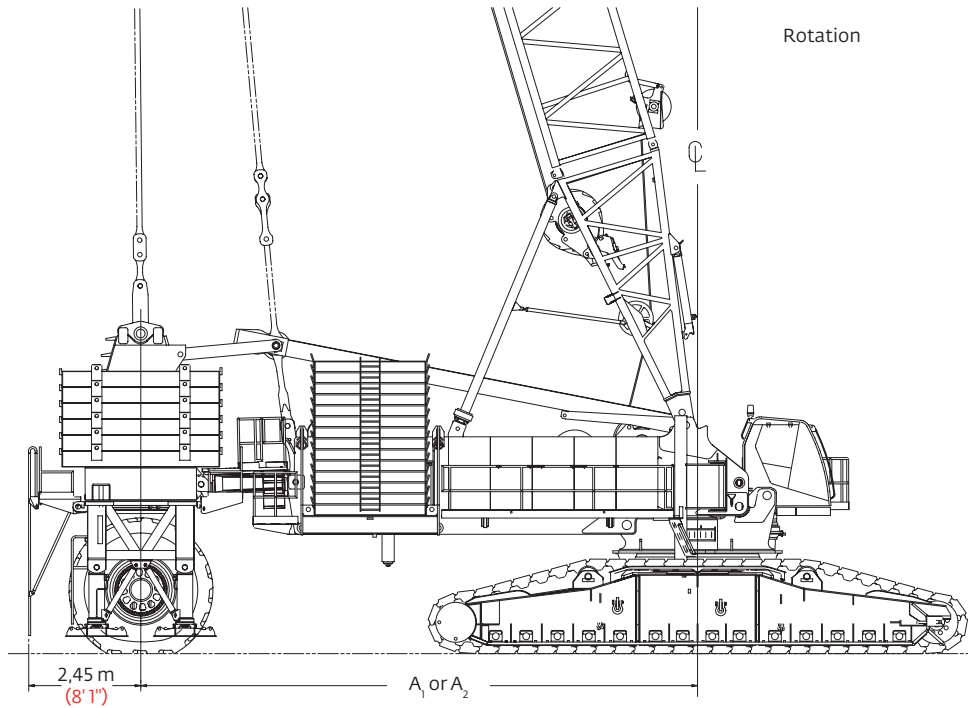
70° Boom angle

		Boom length m (ft)							Boom length m (ft)					
		48,8 (160)	54,9 (180)	61,0 (200)	73,2 (240)	85,4 (280)			48,8 (160)	54,9 (180)	61,0 (200)	73,2 (240)	85,4 (280)	
Luffing jib length 21,3 m (70 ft)	Radius 32,0 (105)	107,3 (236.6)							Radius 32,0 (105)					
	34,0 (115)	99,4 (210.9)	– (205.7)						34,0 (115)					
	36,0 (120)	92,4 (199.8)	90,2 (194.9)	– (190.2)					36,0 (120)					
	42,0 (140)		73,8 (159.3)	72,2 (156.1)	68,0 (147.0)				42,0 (140)	74,8 (161.7)	– (157.0)			
	48,0 (160)				57,0 (122.9)	52,5 (113.5)			48,0 (160)	63,1 (136.3)	61,2 (132.4)	59,5 (128.7)	– (119.8)	
	50,0 (170)					49,7 (104.3)			50,0 (170)	59,8 (125.9)	58,1 (122.4)	56,5 (118.9)	52,6 (110.7)	
	54,0 (180)								54,0 (180)	54,0 (116.5)	52,5 (113.4)	51,1 (110.3)	47,5 (102.6)	42,4 (91.5)
	62,0 (200)								62,0 (200)				39,3 (88.9)	34,9 (78.9)
	64,0 (210)								64,0 (210)				37,4 (82.6)	33,2 (73.4)
	66,0 (220)								66,0 (220)					31,7 (68.2)
Luffing jib length 54,9 m (180 ft)	Radius 50,0 (170)	– (122.9)	– (118.9)						Radius 50,0 (170)					
	54,0 (180)	52,8 (114.1)	51,1 (110.3)	– (106.8)					54,0 (180)					
	62,0 (200)	43,9 (99.2)	42,5 (95.9)	41,1 (92.7)	37,8 (85.4)				62,0 (200)	40,7 (92.0)				
	66,0 (220)	40,3 (87.1)	39,0 (84.1)	37,7 (81.3)	34,6 (74.7)	29,4 (63.4)			66,0 (220)	37,1 (79.8)	37,0 (79.9)	35,6 (76.9)		
	74,0 (240)	– (73.2)	33,0 (74.2)	31,9 (71.7)	29,3 (65.9)	24,5 (55.2)			74,0 (240)	30,4 (68.6)	31,3 (70.4)	30,1 (67.7)	27,3 (61.3)	21,4 (48.4)
	78,0 (260)				27,1 (58.2)	22,4 (48.2)			78,0 (260)	27,4 (58.6)	28,9 (61.9)	27,8 (59.9)	25,1 (54.1)	19,5 (41.8)
	84,0 (280)					19,6 (41.8)			84,0 (280)	23,4 (50.0)	24,8 (52.9)	24,7 (53.3)	22,3 (47.9)	16,8 (36.1)
	90,0 (300)								90,0 (300)	20,0 (42.4)	21,2 (45.0)	22,1 (47.4)	19,8 (42.5)	14,6 (31.1)
	96,0 (320)								96,0 (320)			19,1 (–)	17,6 (37.7)	12,5 (26.6)
	104,0 (340)								104,0 (340)					10,0 (22.4)

For complete chart, refer to www.cranelibrary.com.

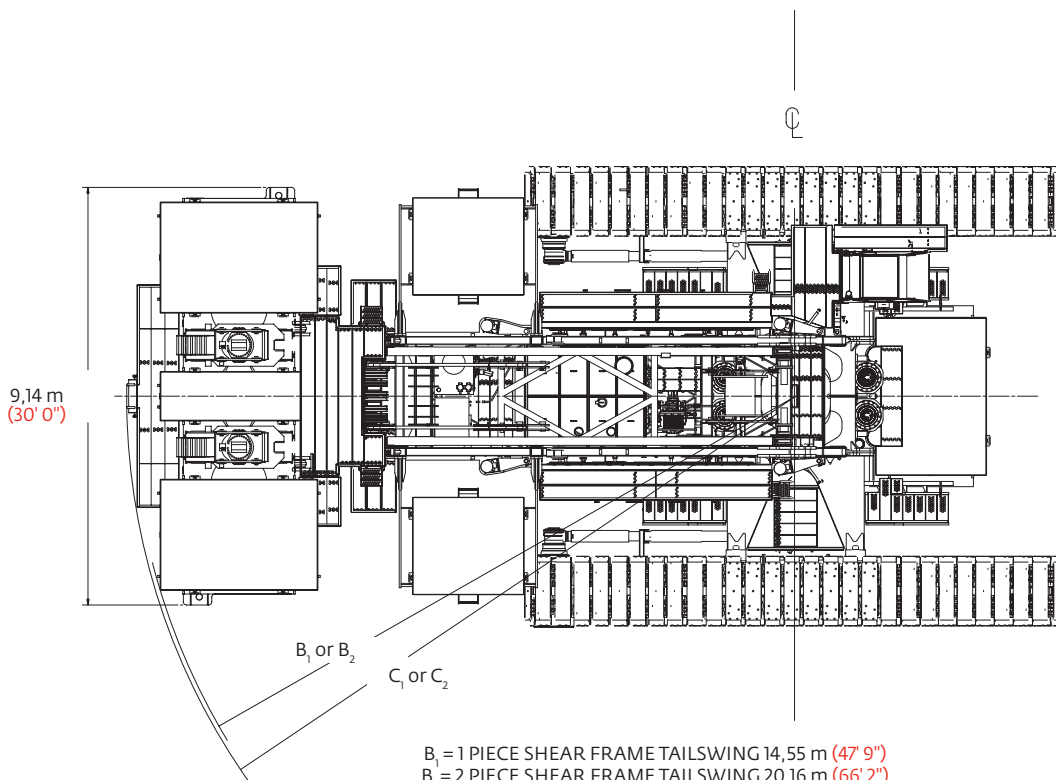
Outline dimensions

MAX-ER®



A₁ = 1 PIECE SHEAR FRAME 12,19 m (40' 0")
 A₂ = 2 PIECE SHEAR FRAME 17,98 m (59' 0")

WHEELED COUNTERWEIGHT (ONE PIECE SHEAR FRAME FOR 40' RADIUS SHOWN.)

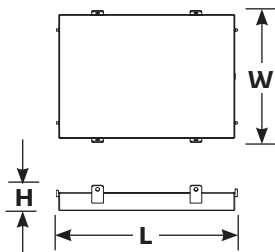
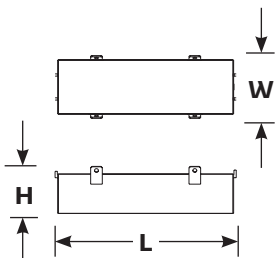
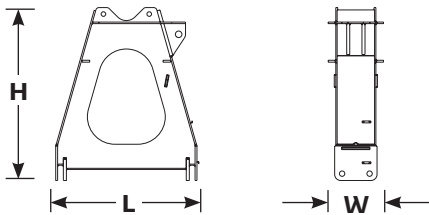
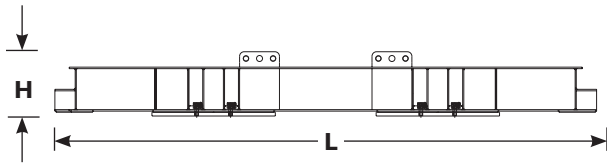
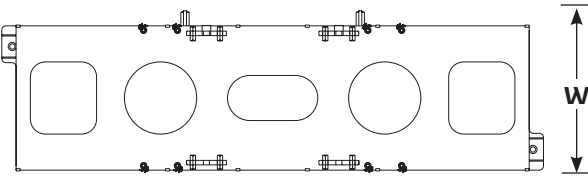
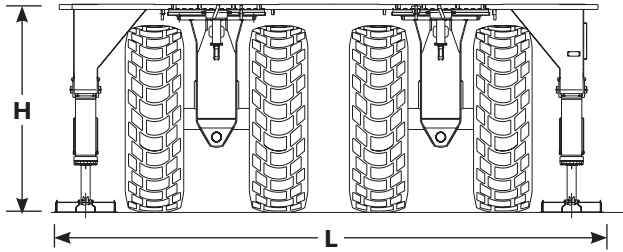
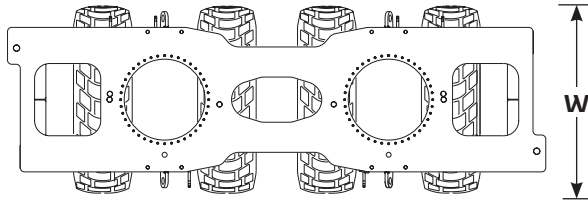


B₁ = 1 PIECE SHEAR FRAME TAILSWING 14,55 m (47' 9")
 B₂ = 2 PIECE SHEAR FRAME TAILSWING 20,16 m (66' 2")

C₁ = 1 PIECE SHEAR FRAME TAILSWING 14,66 m (48' 1")
 C₂ = 2 PIECE SHEAR FRAME TAILSWING 20,44 m (67' 1")

Outline dimensions

MAX-ER®



Wheeled carrier with tires

Length	9,27 m	30' 5"
Width	3,55 m	11' 8"
Height	3,55 m	11' 8"
Weight	43 252 kg	95,355 lb

Wheeled carrier without tires

Length	9,27 m	30' 5"
Width	3,30 m	10' 10"
Height	3,55 m	11' 8"
Weight	17 872 kg	39,400 lb

Counterweight tray

Length	9,14 m	30' 0"
Width	2,71 m	8' 11"
Height	1,03 m	3' 5"
Weight	15 381 kg	33,910 lb

A-Frame

Length	2,38 m	7' 10"
Width	0,92 m	3' 1"
Height	2,87 m	9' 5"
Weight	3 807 kg	8,395 lb

Center counterweight box

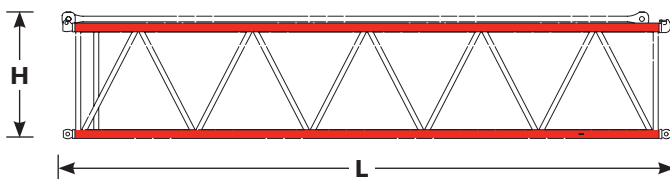
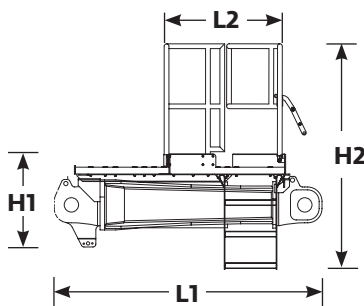
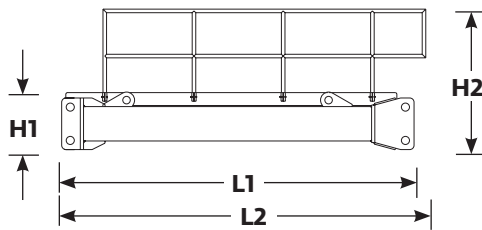
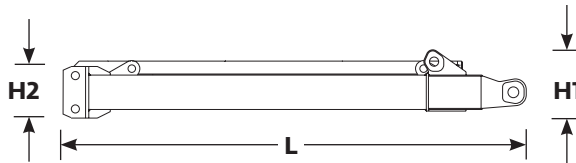
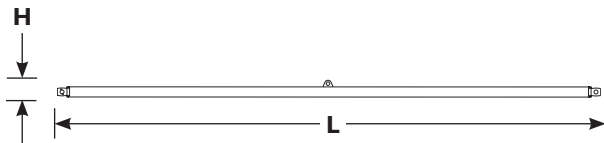
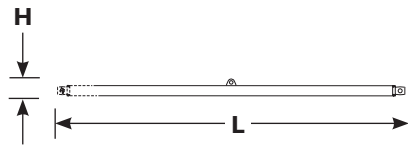
Length	3,56 m	11' 8"
Width	1,24 m	4' 10"
Height	0,93 m	3' 1"
Weight	19 958 kg	44,000 lb

Side counterweight box

Length	3,56 m	11' 8"
Width	2,59 m	8' 6"
Height	0,50 m	1' 8"
Weight	19 958 kg	44,000 lb

Outline dimensions

MAX-ER®



5,5 m (18') Struts

Length	5,79 m	19' 0"
Width	0,28 m	0' 11"
Height	0,28 m	0' 11"
Weight	757 kg	1,670 lb

Note: For wheeled counterweight.

9,1 m (30') Struts

Length	9,45 m	31' 0"
Width	0,28 m	0' 11"
Height	0,28 m	0' 11"
Weight	1183 kg	2,610 lb

Note: For wheeled counterweight.

Front shear frame

Length	3,96 m	13' 0"
Width	3,40 m	11' 2"
Height 1	0,81 m	2' 8"
Weight	3199 kg	7,051 lb

Note: Shown with railings attached in operating position.

Height 2	0,61 m	2' 0"
----------	--------	-------

Rear shear frame and railings

Length 1	4,54 m	14' 11"
Width	3,40 m	11' 2"
Height 1	0,68 m	2' 3"
Weight	3556 kg	7,840 lb

Note: Shown with railings attached in operating position.

Length 2	4,40 m	14' 5"
----------	--------	--------

Height 2	1,66 m	5' 6"
----------	--------	-------

Shear frame adapter and railings

Length 1	2,61 m	8' 7"
Width	3,40 m	11' 2"
Height 1	0,83 m	2' 8"
Weight	2857 kg	6,298 lb

Note: Shown with railings attached in operating position.

Length 2	1,05 m	3' 5"
----------	--------	-------

Height 2	2,00 m	6' 7"
----------	--------	-------

12,2 m (40') No. 56 mast insert and straps

Length	12,45 m	40' 10"
Width	3,00 m	9' 10"
Height	2,49 m	8' 2"
Weight	8085 kg	17,825 lb

8,1 m (26' 8'') Straps

Length	8,41 m	27' 6"
Width	0,08 m	0' 3"
Height	0,28 m	0' 11"
Weight	1238 kg	2,730 lb

No. 55 or 55A boom combinations

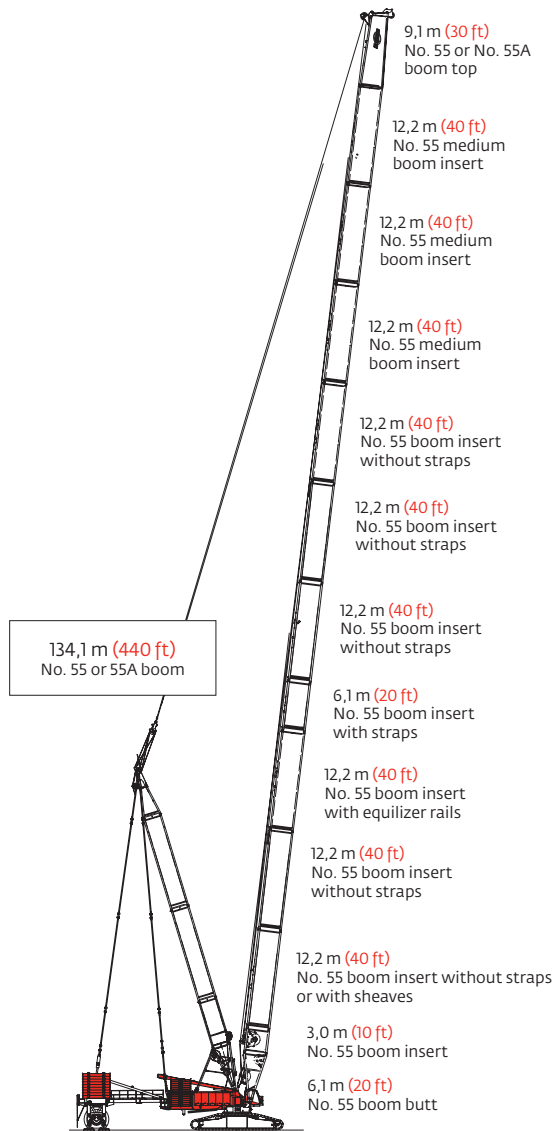
MAX-ER®

Boom length m (ft)	Boom inserts		
	3,0 m (10 ft)	6,1 m (20 ft)	12,2 m (40 ft)
42,7 (140)	1	–	2
48,8 (160)	1	1	2
54,9 (180)	1	–	3
61,0 (200)	1	1	3
67,1 (220)	1	2	3
73,2 (240)	1	1	4
79,2 (260)	1	2	4
85,3 (280)	1	1	5
91,4 (300)	1	2	5
97,5 (320)	1	1	6
103,7 (340)	1	2	6
109,8 (360)	1	1	7
115,9 (380)	1	2	7
122,0 (400)	1	1	8
128,0 (420)	1	2	8
134,1 (440)	1	1	9

Note: 36,6 m (120') basic boom consists of 6,1 m (20') butt, 3,0 m (10') insert with drum, 6,1 m (20') insert, 12,2 m (40'), and 9,1 m (30') top.

Note: The first 12,2 m (40') insert is always a 12,2 m (40') with equalizer platform. The second 12,2 m (40') insert can be with or without a 12,2 m (40') luffing drum storage.

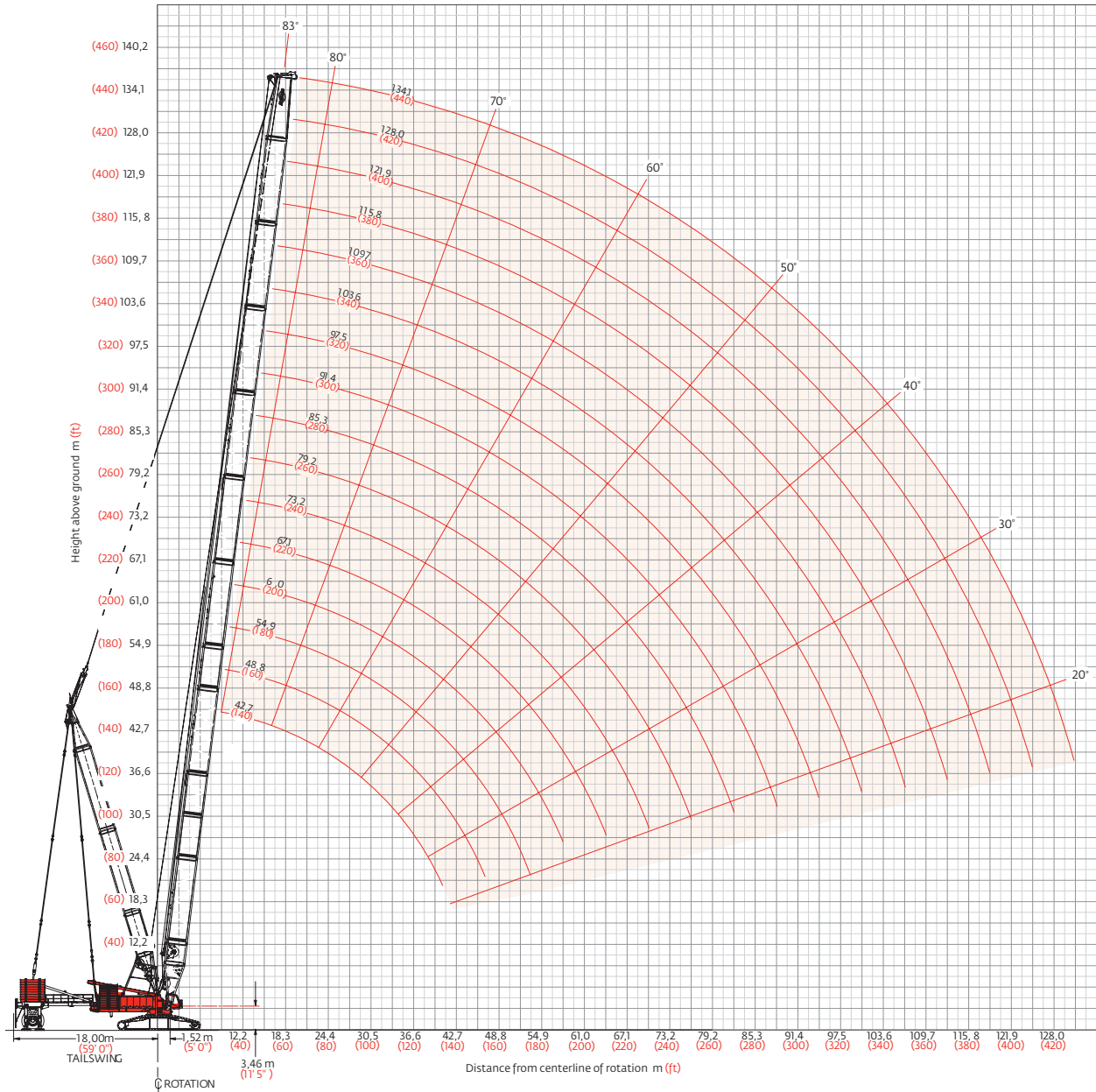
May use a 12,2 m (40') No. 55 insert with or without sheaves.



No. 55 or 55A boom range diagram

MAX-ER®

No. 55 or 55A boom



No. 55 or 55A boom load charts

MAX-ER®

No. 55 or 55A boom 18 m (59 ft) MAX-ER® counterweight position

223 170 kg (492,000 lb) Counterweight 145 150 kg (320,000 lb) Carbody counterweight
390 090 kg (860,000 lb) Wheeled counterweight or 391 810 kg (863,800 lb) hanging counterweight
360° Rating, kg (lb) x 1 000

Boom length m (ft)

Boom m (ft)	42,7 (140)	54,9 (180)	67,1 (220)	79,2 (260)	91,4 (300)	103,6 (340)	115,8 (380)	134,0 (440)
Radius								
8,5 (28)	750,0 (1653.5)							
10,0 (34)	750,0 (1653.5)	684,8 (1509.8)						
12,0 (40)	715,7 (1543.3)	684,8 (1509.8)	570,9 (1258.0)					
14,0 (50)	649,9 (1310.1)	647,9 (1303.8)	565,8 (1240.2)	405,6 (894.4)	– (655,0)			
18,0 (60)	502,1 (1089.4)	499,3 (1083.3)	497,8 (1075.8)	405,6 (894.4)	297,1 (655,0)	223,1 (491.9)	– (374.2)	
20,0 (70)	450,8 (929.9)	448,0 (923.9)	444,6 (916.3)	405,6 (894.4)	297,1 (655,0)	223,1 (491.9)	169,7 (374.2)	117,2 (258.5)
24,0 (80)	373,1 (809.2)	370,4 (803.3)	367,0 (795.7)	364,8 (789.4)	297,1 (655,0)	223,1 (491.9)	169,7 (374.2)	117,2 (258.5)
30,0 (100)	294,5 (638.4)	291,9 (632.8)	288,5 (625.2)	285,6 (618.9)	284,2 (612.1)	223,1 (491.9)	169,7 (374.2)	117,2 (258.5)
36,0 (120)	233,1 (502.2)	239,1 (518.0)	235,6 (510.4)	232,8 (504.2)	229,7 (497.4)	223,1 (491.9)	169,5 (373.7)	116,4 (256.5)
42,0 (140)	181,4 (387.5)	201,0 (435.4)	197,6 (427.7)	194,8 (421.6)	191,8 (414.9)	189,9 (410.9)	167,2 (368.2)	115,1 (253.4)
48,0 (160)		167,5 (359.6)	168,9 (365.4)	166,1 (359.3)	163,1 (352.6)	161,3 (348.7)	159,4 (343.7)	113,6 (250.1)
54,0 (180)		134,5 (285.7)	146,4 (316.6)	143,7 (310.6)	140,7 (304.0)	138,9 (300.1)	136,6 (295.1)	112,0 (246.5)
66,0 (220)				– (237.2)	– (232.7)	106,2 (229.0)	103,9 (224.0)	110,3 (216.2)
72,0 (240)				– (197.2)	– (205.8)	– (202.1)	– (197.2)	– (189.4)
78,0 (260)					82,7 (175.8)	83,3 (179.3)	81,1 (174.5)	77,6 (166.7)
84,0 (280)					– (145.6)	– (157.4)	– (154.9)	– (147.2)
90,0 (300)					– (–)	62,3 (131.6)	64,2 (137.8)	60,7 (130.2)
96,0 (320)						– (107.9)	– (115.2)	– (115.3)
102,0 (340)							45,3 (94.8)	47,4 (99.6)
108,0 (360)							– (75.6)	– (81.6)
114,0 (380)								31,7 (65.3)
130,0 (430)								13,9 (28.0)

For complete chart, refer to www.cranelibrary.com.

No. 55 or 55A boom load charts

MAX-ER®

No. 55 or 55A boom 12 m (40 ft) MAX-ER® counterweight position

223 170 kg (492,000 lb) Counterweight 145 150 kg (320,000 lb) Carbody counterweight
390 090 kg (860,000 lb) Wheeled counterweight or 391 810 kg (863,800 lb) hanging counterweight

360° Rating, kg (lb) x 1 000

Boom length m (ft)

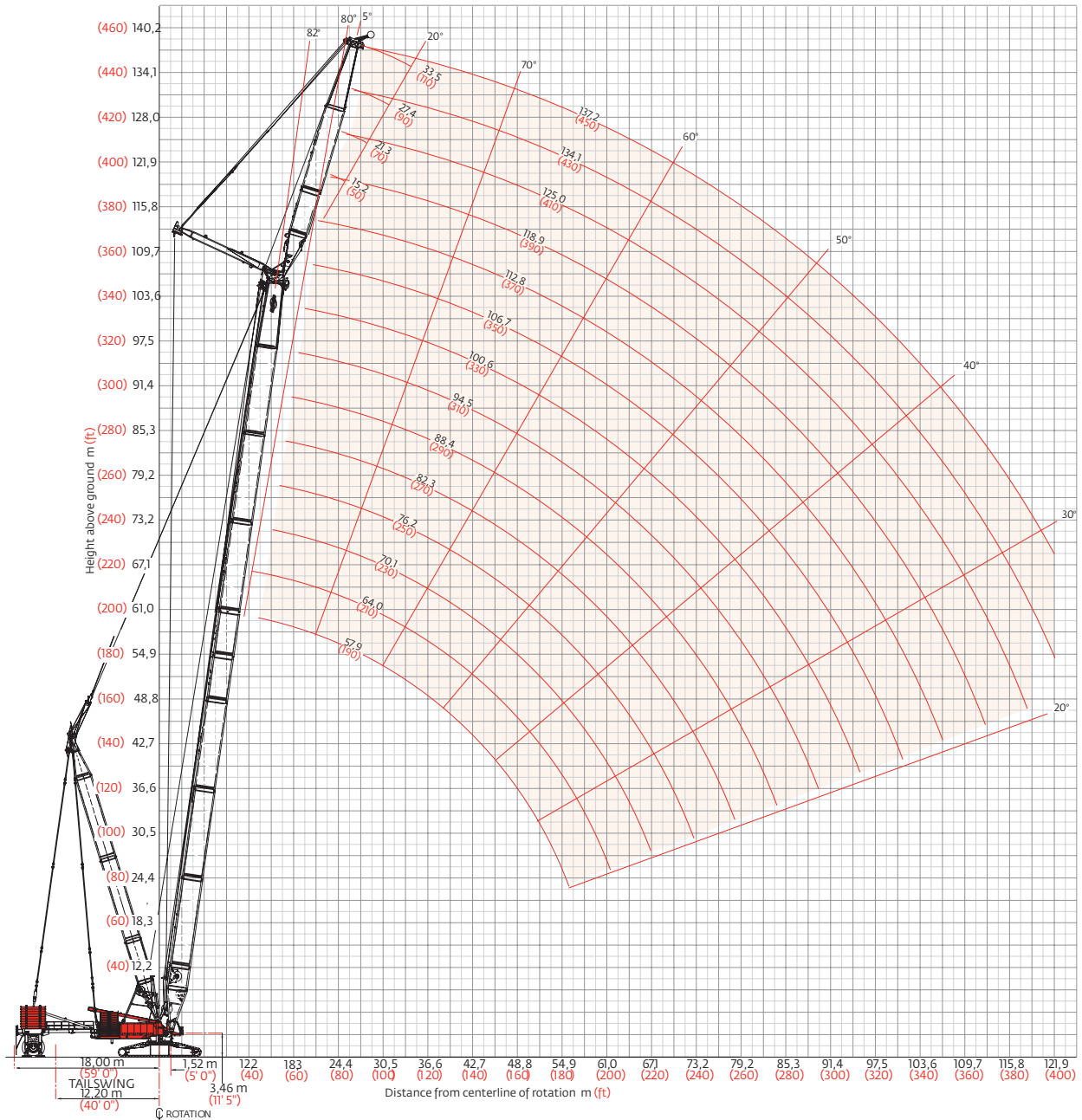
Radius m (ft)	42,7 (140)	54,9 (180)	67,1 (220)	79,2 (260)	91,4 (300)	103,6 (340)	115,8 (380)	134,0 (440)
8,5 (28)	750,0 (1653.5)							
10,0 (34)	729,8 (1543.3)	684,8 (1509.8)						
12,0 (40)	614,4 (1333.6)	611,4 (1327.0)	570,9 (1258.0)					
14,0 (50)	526,7 (1066.1)	523,8 (1059.8)	522,6 (1052.4)	405,6 (894.4)	– (655,0)			
18,0 (60)	407,8 (884.7)	405,0 (878.6)	401,6 (871.1)	394,8 (864.8)	297,1 (655,0)	223,1 (491.9)	– (374.2)	
20,0 (70)	365,7 (753.6)	362,9 (747.6)	359,5 (740.0)	356,7 (733.8)	297,1 (655,0)	223,1 (491.9)	169,7 (374.2)	117,2 (258.5)
24,0 (80)	299,3 (646.1)	299,1 (648.4)	295,7 (640.9)	292,8 (634.6)	287,8 (627.8)	223,1 (491.9)	169,7 (374.2)	117,2 (258.5)
30,0 (100)	222,7 (480.4)	234,6 (508.3)	231,1 (500.7)	228,3 (494.4)	225,2 (487.6)	220,5 (483.6)	169,7 (374.2)	117,2 (258.5)
36,0 (120)	171,3 (368.6)	189,2 (407.2)	187,7 (406.3)	184,8 (400.1)	181,8 (393.3)	180,0 (389.3)	169,5 (373.7)	116,4 (256.5)
42,0 (140)	131,4 (280.0)	149,8 (322.1)	156,4 (338.3)	153,6 (332.1)	150,5 (325.4)	148,7 (321.5)	146,4 (316.4)	115,1 (253.4)
48,0 (160)		119,9 (256.9)	128,7 (276.3)	130,0 (280.9)	126,9 (274.2)	125,2 (270.3)	122,9 (265.3)	113,6 (250.1)
54,0 (180)		94,7 (199.7)	104,6 (223.9)	110,8 (237.1)	108,5 (234.2)	106,8 (230.3)	104,5 (225.3)	100,9 (217.4)
66,0 (220)				74,3 (158.1)	77,4 (165.0)	79,8 (171.8)	77,5 (166.8)	74,0 (159.0)
72,0 (240)				– (127.1)	– (134.6)	– (142.0)	– (144.7)	– (136.9)
78,0 (260)					51,5 (108.5)	54,8 (115.8)	56,3 (119.2)	55,2 (118.2)
84,0 (280)					– (85.1)	– (93.2)	– (96.4)	– (98.3)
90,0 (300)					– (–)	35,2 (73.2)	36,7 (76.5)	37,4 (78.0)
96,0 (320)						– (54.7)	– (59.0)	– (60.2)
102,0 (340)							21,4 (43.1)	22,0 (44.6)
108,0 (360)							– (28.2)	– (30.7)
114,0 (380)								9,8 (18.0)
130,0 (430)								

For complete chart, refer to www.cranelibrary.com.

No. 79A fixed jib range diagram

MAX-ER®

No. 79A fixed jib on No. 55 or 55A boom



Fixed jib load charts

MAX-ER®

No. 79A fixed jib on No. 55 or 55A boom

223,170 kg (528,000 lb) Crane counterweight 145,150 kg (320,000 lb) Carbody counterweight
 390,090 kg (860,000 lb) Wheeled counterweight at 18 m (59') position

360° Rating, kg (lb) x 1 000

	5° Offset					20° Offset				
	Boom length m (ft)					Boom length m (ft)				
	42,7 (140)	61,0 (200)	79,3 (260)	91,4 (300)	103,7 (340)	42,7 (140)	61,0 (200)	79,3 (260)	91,4 (300)	103,7 (340)
Jib length 15,2 m (50 ft)	Radius 13,7 (45)	500,0 (1102.4)								
	20,0 (70)	444,9 (915.9)	391,7 (855.8)	262,5 (578.8)	– (437.3)	290,8 (619.0)	311,4 (670.5)			
	30,0 (100)	286,4 (620.5)	281,3 (609.2)	262,5 (578.8)	198,3 (437.3)	148,6 (327.4)	230,1 (502.6)	264,2 (578.5)	246,0 (542.5)	182,4 (402.3)
	32,0 (120)	266,4 (503.9)	261,2 (492.4)	255,9 (480.6)	198,3 (435.3)	148,0 (323.6)	221,2 (448.8)	256,6 (498.7)	246,0 (488.5)	182,4 (402.3)
	48,0 (160)	151,5 (325.2)	159,9 (344.7)	154,1 (332.8)	150,8 (325.5)	142,6 (313.9)	154,2 (330.9)	161,3 (348.5)	156,6 (338.0)	153,6 (331.4)
	60,0 (200)		114,8 (245.4)	112,9 (243.1)	109,5 (235.7)	107,2 (230.7)		117,3 (250.5)	114,4 (246.5)	111,4 (239.8)
	72,0 (240)		75,7 (179.4)	83,8 (195.8)	81,6 (188.4)	79,4 (170.2)		85,8 (182.5)	82,9 (177.9)	80,9 (173.4)
	84,0 (280)			54,7 (144.2)	57,3 (149.8)	59,3 (126.3)				59,1 (123.9)
	90,0 (300)			– (86.4)	– (94.4)	– (100.2)				– (96.8)
	102,0 (340)					– (56.5)				
	112,0 (370)					– (28.0)				
Jib length 21,3 m (70 ft)	Radius 13,7 (45)									
	20,0 (70)	400,8 (877.6)	340,0 (749.6)	– (464.2)						
	30,0 (100)	288,0 (623.8)	283,0 (612.8)	210,5 (464.2)	171,9 (379.1)	130,2 (286.9)	271,8 (577.6)	–		
	32,0 (120)	267,8 (506.9)	262,8 (495.4)	210,5 (464.2)	171,9 (374.8)	129,8 (284.0)	212,4 (463.5)	231,9 (507.5)	206,7 (455.7)	158,3 (349.2)
	48,0 (160)	157,0 (337.5)	160,7 (347.2)	155,3 (335.2)	152,0 (328.0)	125,5 (276.1)	203,6 (410.4)	224,7 (463.6)	206,7 (455.7)	158,3 (349.2)
	60,0 (200)	104,9 (223.3)	119,0 (255.7)	113,8 (245.1)	110,4 (237.7)	108,1 (232.6)	154,5 (337.0)	163,0 (352.2)	158,3 (341.8)	155,3 (335.5)
	72,0 (240)		81,3 (172.4)	85,7 (184.2)	82,4 (176.8)	80,0 (171.7)		120,6 (260.0)	115,9 (249.6)	112,9 (243.0)
	84,0 (280)			58,5 (123.0)	60,5 (127.3)	59,8 (127.8)		87,2 (187.2)	84,1 (180.5)	82,1 (176.0)
	90,0 (300)			– (96.7)	– (101.4)	– (106.1)		60,4 (126.7)	63,1 (132.5)	61,3 (130.8)
	102,0 (340)				– (57.0)	– (62.3)				– (105.3)
	112,0 (370)					16,7 (34.7)				– (111.3)

For complete chart, refer to www.cranelibrary.com.

Fixed jib load charts

MAX-ER®

No. 79A fixed jib on No. 55 or 55A boom

223,170 kg (528,000 lb) Crane counterweight 145,150 kg (320,000 lb) Carbody counterweight
 390,090 kg (860,000 lb) Wheeled counterweight at 18 m (59') position

360° Rating, kg (lb) x 1 000

Jib length 27,4 m (90 ft)	5° Offset					20° Offset				
	Boom length m (ft)					Boom length m (ft)				
	42,7 (140)	61,0 (200)	79,3 (260)	91,4 (300)	103,7 (340)	42,7 (140)	61,0 (200)	79,3 (260)	91,4 (300)	103,7 (340)
Radius 13,7 (45)										
20,0 (70)	344,1 (755.6)	289,5 (638.4)								
30,0 (100)	282,4 (614.9)	282,0 (614.3)	182,4 (402.2)	134,5 (296.7)	99,7 (220.0)	208,1 (453.9)	213,4 (466.8)	178,2 (392.9)	– (304.5)	
32,0 (120)	268,1 (508.1)	263,4 (496.7)	182,4 (402.2)	134,5 (296.7)	99,7 (220.0)	198,9 (398.2)	206,5 (423.7)	178,2 (392.9)	138,1 (304.5)	104,3 (230.0)
48,0 (160)	160,3 (345.0)	161,2 (348.3)	155,7 (336.2)	134,5 (296.7)	99,7 (220.0)	147,0 (320.3)	163,7 (354.6)	159,4 (344.3)	138,1 (304.5)	104,3 (230.0)
60,0 (200)	110,1 (235.5)	119,7 (258.1)	114,1 (245.8)	110,8 (238.5)	99,7 (220.0)	113,0 (241.6)	121,6 (262.2)	116,8 (251.6)	113,8 (245.1)	103,7 (228.6)
72,0 (240)		85,0 (180.8)	86,1 (185.0)	82,7 (177.5)	80,3 (172.2)		87,8 (186.7)	88,0 (189.0)	84,9 (182.3)	82,8 (177.7)
84,0 (280)			61,3 (129.2)	62,4 (132.4)	60,0 (128.2)			64,0 (134.9)	64,0 (136.8)	61,9 (132.2)
90,0 (300)			– (103.6)	– (106.5)	– (110.4)			– (107.8)	– (112.4)	– (113.8)
102,0 (340)				– (63.0)	– (66.6)					– (71.3)
112,0 (370)				16,6 (34.4)	18,8 (39.4)					20,3 (42.5)
122,0 (400)					– (15.0)					

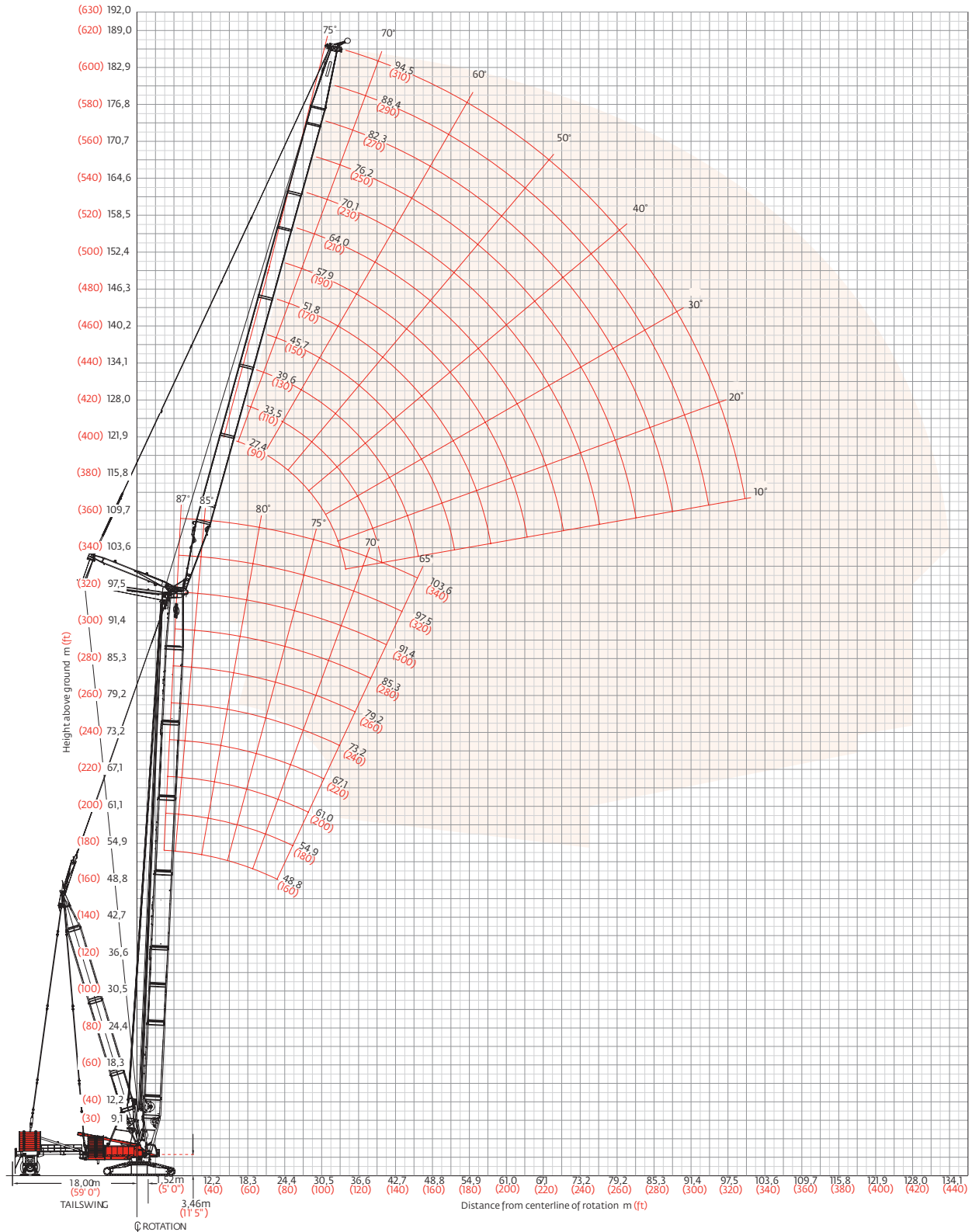
Jib length 33,5 m (110 ft)	5° Offset					20° Offset				
	Boom length m (ft)					Boom length m (ft)				
	42,7 (140)	61,0 (200)	79,3 (260)	91,4 (300)	103,7 (340)	42,7 (140)	61,0 (200)	79,3 (260)	91,4 (300)	103,7 (340)
Radius 13,7 (45)										
20,0 (70)	– (703.3)									
30,0 (100)	261,7 (569.7)	245,7 (541.8)	158,4 (349.3)			201,0 (438.4)	202,5 (442.9)	– (343.8)		
32,0 (120)	248,2 (488.0)	245,7 (498.0)	158,4 (349.3)	119,7 (264.1)	85,7 (189.0)	192,2 (385.4)	195,7 (400.5)	155,9 (343.8)	121,6 (268.3)	– (201.4)
48,0 (160)	163,0 (350.9)	161,8 (349.7)	155,7 (337.4)	119,7 (264.1)	85,7 (189.0)	142,3 (310.1)	153,4 (334.9)	158,3 (343.8)	121,6 (268.3)	91,3 (201.4)
60,0 (200)	113,8 (243.9)	120,3 (259.6)	114,7 (247.2)	111,4 (239.8)	85,7 (189.0)	117,7 (251.9)	122,8 (264.9)	117,9 (254.1)	115,0 (247.7)	91,2 (201.4)
72,0 (240)	78,5 (166.4)	88,3 (188.2)	86,7 (186.4)	83,3 (173.5)	80,9 (173.5)		92,1 (196.3)	89,1 (191.5)	86,1 (184.8)	82,1 (178.3)
84,0 (280)		60,7 (128.0)	64,1 (135.4)	63,1 (134.9)	60,6 (129.5)		63,0 (132.6)	67,8 (143.1)	65,1 (139.3)	63,0 (134.6)
90,0 (300)		– (101.1)	– (110.2)	– (112.1)	– (111.8)			– (116.5)	– (120.0)	– (116.2)
102,0 (340)			– (67.1)	– (69.2)	– (71.7)				– (74.4)	– (78.2)
112,0 (370)				20,0 (42.1)	21,2 (44.8)					23,5 (49.6)
122,0 (400)					– (21.3)					

For complete chart, refer to www.cranelibrary.com.

No. 79A luffing jib range diagram

MAX-ER®

No. 79A luffing jib on No. 55 or 55A



Luffing jib load charts

MAX-ER®

Luffing jib No. 79A on No. 55 or 55A boom

223 170 kg (492,000 lb) Counterweight 145 150 kg (320,000 lb) Carbody counterweight
390 090 kg (860,000 lb) Wheeled counterweight or hanging counterweight

360° Rating, kg (lb) x 1 000

85° Boom angle

		Boom length m (ft)						Boom length m (ft)			
		48,8 (160)	61,0 (200)	79,2 (260)	91,4 (300)			48,8 (160)	61,0 (200)	79,2 (260)	91,4 (300)
Luffing jib length 27,4 m (90 ft)	Radius					Luffing jib length 45,7 m (150 ft)	Radius				
	16,8 (55)	334,6 (737.7)					16,8 (55)				
	18,0 (60)	327,0 (717.0)	– (632.0)				18,0 (60)				
	20,0 (70)	315,9 (681.7)	274,9 (584.0)	189,0 (409.5)	– (313.5)		20,0 (70)				
	24,0 (80)	282,5 (602.7)	243,7 (530.6)	175,2 (382.8)	139,3 (305.7)		24,0 (80)	223,8 (490.8)	– (390.4)		
	26,0 (90)	248,0 (504.9)	227,8 (478.5)	166,8 (354.5)	134,1 (286.8)		26,0 (90)	215,1 (459.0)	173,3 (371.2)	125,6 (271.0)	100,5 (218.0)
	30,0 (100)	196,5 (416.7)	199,5 (433.3)	150,4 (327.6)	122,8 (268.1)		30,0 (100)	195,0 (424.5)	159,0 (346.6)	117,3 (256.5)	95,0 (207.8)
	36,0 (120)			128,8 (271.8)	110,1 (241.6)		36,0 (120)	160,2 (345.1)	136,0 (295.2)	103,3 (224.9)	85,0 (185.2)
	42,0 (140)						42,0 (140)	128,3 (276.5)	115,3 (249.8)	89,8 (195.1)	74,9 (162.9)
	48,0 (160)						48,0 (160)	103,7 (216.6)	99,4 (215.7)	78,9 (171.5)	66,5 (144.6)
54,0 (180)					54,0 (180)			73,5 (163.4)	61,5 (135.7)		
Luffing jib length 70,1 m (230 ft)	Radius					Luffing jib length 94,5 m (310 ft)	Radius				
	28,0 (95)	– (279.7)					28,0 (95)				
	32,0 (105)	117,8 (273.8)	103,3 (227.9)	77,2 (170.2)			32,0 (105)				
	36,0 (120)	112,0 (258.3)	98,3 (215.2)	73,7 (161.5)	59,8 (131.1)		36,0 (120)				
	42,0 (140)	101,0 (234.3)	89,6 (195.3)	67,8 (147.9)	55,2 (120.6)		42,0 (140)	68,4 (150.6)	60,1 (131.8)	45,2 (99.2)	36,3 (79.6)
	54,0 (180)	77,9 (183.9)	71,0 (153.9)	54,7 (118.8)	45,1 (97.9)		54,0 (180)	53,8 (116.2)	53,0 (115.5)	39,9 (87.1)	31,9 (69.6)
	66,0 (220)	59,2 (133.0)	55,8 (120.8)	43,8 (94.9)	36,4 (79.0)		66,0 (220)	38,8 (83.0)	39,3 (84.3)	33,7 (73.2)	26,8 (58.2)
	78,0 (260)			38,4 (83.6)	32,0 (71.2)		78,0 (260)	26,2 (55.3)	27,0 (57.2)	25,5 (54.1)	22,1 (45.5)
	90,0 (300)						90,0 (300)	– (33.3)	– (34.9)	– (34.3)	– (35.4)
	96,0 (320)						96,0 (320)	11,9 (24.2)	12,6 (25.6)	12,5 (25.6)	13,1 (26.8)
102,0 (340)					102,0 (340)			– (18.2)	– (19.2)		

For complete chart, refer to www.cranelibrary.com.

Luffing jib load charts

MAX-ER®

Luffing jib No. 79A on No. 55 or 55A boom

223 170 kg (492,000 lb) Counterweight 145 150 kg (320,000 lb) Carbody counterweight
 390 090 kg (860,000 lb) Wheeled counterweight or hanging counterweight

360° Rating, kg (lb) x 1 000

80° Boom angle

		Boom length m (ft)						Boom length m (ft)				
		48,8 (160)	61,0 (200)	79,2 (260)	91,4 (300)			48,8 (160)	61,0 (200)	79,2 (260)	91,4 (300)	
Luffing jib length 27,4 m (90 ft)	Radius 22,0 (75)					Luffing jib length 45,7 m (150 ft)	Radius 22,0 (75)					
	24,0 (80)	- (700.0)					24,0 (80)					
	26,0 (90)	309,2 (650.5)	295,3 (631.2)				26,0 (90)					
	30,0 (100)	251,4 (539.5)	267,5 (581.5)	191,5 (420.9)	- (319.1)		30,0 (100)	- (485.3)				
	32,0 (110)	225,0 (458.4)	251,8 (512.9)	177,4 (395.5)	143,7 (314.1)		32,0 (110)	215,5 (464.9)	189,5 (410.2)			
	36,0 (120)	177,0 (363.5)	204,5 (438.3)	169,2 (368.0)	138,3 (301.0)		36,0 (120)	192,2 (411.9)	178,9 (390.4)	130,9 (287.0)		
	42,0 (140)			148,2 (323.7)	122,4 (266.6)		42,0 (140)	149,5 (321.5)	157,4 (341.5)	119,5 (260.3)	97,6 (213.0)	
	48,0 (160)						48,0 (160)	121,0 (260.1)	130,1 (279.4)	105,9 (229.7)	88,1 (191.5)	
	54,0 (180)						54,0 (180)	97,7 (198.1)	106,9 (229.6)	92,9 (201.3)	78,4 (170.2)	
	60,0 (200)						60,0 (200)			83,6 (183.1)	70,6 (153.9)	
Luffing jib length 70,1 m (230 ft)	Radius 38,0 (130)					Luffing jib length 94,5 m (310 ft)	Radius 38,0 (130)					
	46,0 (150)	112,0 (248.1)	105,0 (232.0)	79,0 (174.7)			46,0 (150)					
	50,0 (170)	104,3 (222.2)	100,5 (216.2)	76,3 (164.7)	61,9 (134.1)		50,0 (170)	64,8 (138.4)	- (128.4)			
	60,0 (200)	81,6 (175.2)	85,6 (185.5)	66,5 (144.4)	54,7 (119.0)		60,0 (200)	51,9 (111.8)	53,1 (114.7)	45,8 (101.0)	37,0 (81.2)	
	70,0 (230)	62,5 (137.5)	65,9 (145.1)	55,9 (123.2)	46,6 (102.7)		70,0 (230)	39,5 (86.9)	41,4 (91.1)	39,3 (86.5)	34,0 (74.9)	
	78,0 (260)	48,8 (95.5)	53,8 (115.1)	48,8 (105.7)	41,0 (88.9)		78,0 (260)	30,7 (64.9)	32,6 (69.3)	32,0 (68.1)	30,9 (67.2)	
	88,0 (290)			- (105.7)	37,7 (-)		88,0 (290)	- (46.4)	23,1 (50.3)	23,4 (51.1)	24,7 (53.8)	
	96,0 (320)						96,0 (320)	- (30.8)	16,6 (34.2)	17,4 (36.0)	18,7 (38.9)	
	106,0 (350)						106,0 (350)		- (21.0)	- (23.1)	- (25.7)	
	112,0 (370)						112,0 (370)				8,7 (-)	

For complete chart, refer to www.cranelibrary.com.

Luffing jib load charts

MAX-ER®

360° Rating, kg (lb) x 1 000

Luffing jib No. 79A on No. 55 or 55A boom

223 170 kg (492,000 lb) Counterweight 145 150 kg (320,000 lb) Carbody counterweight

390 090 kg (860,000 lb) Wheeled counterweight or hanging counterweight

360° Rating, kg (lb) x 1 000

70° Boom angle

		Boom length m (ft)						Boom length m (ft)			
		48,8 (160)	61,0 (200)	79,2 (260)	91,4 (300)			48,8 (160)	61,0 (200)	79,2 (260)	91,4 (300)
Luffing jib length 27,4 m (90 ft)	Radius 30,0 (100)					Luffing jib length 45,7 m (150 ft)	Radius 30,0 (100)				
	36,0 (120)	- (503.0)					36,0 (120)				
	38,0 (130)	219,1 (462.0)	- (447.0)				38,0 (130)				
	42,0 (140)	196,7 (426.4)	190,4 (412.8)				42,0 (140)				
	44,0 (150)	186,1 (367.7)	181,1 (382.9)	- (360.7)			44,0 (150)	- (389.0)			
	50,0 (170)		157,0 (-)	148,2 (314.0)	- (299.4)		50,0 (170)	150,7 (310.8)	- (326.5)		
	56,0 (190)			130,1 (-)	124,3 (263.7)		56,0 (190)	122,0 (252.9)	135,7 (288.1)	- (269.1)	
	64,0 (210)						64,0 (210)	94,4 (208.2)	108,1 (238.3)	108,7 (239.7)	99,3 (219.0)
	66,0 (220)						66,0 (220)		101,6 (217.2)	104,8 (226.8)	98,7 (214.8)
	70,0 (230)						70,0 (230)			97,6 (215.0)	92,5 (203.6)
Luffing jib length 70,1 m (230 ft)	Radius 48,0 (160)					Luffing jib length 94,5 m (310 ft)	Radius 48,0 (160)				
	52,0 (180)						52,0 (180)				
	60,0 (200)	100,3 (217.7)					60,0 (200)				
	70,0 (230)	77,6 (170.8)	87,3 (192.0)	73,8 (162.8)			70,0 (230)				
	78,0 (260)	63,0 (134.6)	70,1 (149.7)	73,8 (162.8)	60,3 (133.1)		78,0 (260)	39,6 (84.5)	43,5 (93.0)		
	88,0 (290)	47,9 (104.5)	54,4 (118.9)	63,8 (139.4)	58,4 (128.3)		88,0 (290)	29,1 (63.4)	33,1 (72.2)	34,8 (87.1)	34,3 (75.8)
	96,0 (320)			52,2 (110.9)	52,7 (114.0)		96,0 (320)	21,8 (45.3)	25,4 (53.1)	28,1 (59.2)	30,6 (64.9)
	106,0 (350)						106,0 (350)	- (30.0)	- (36.7)	- (43.4)	- (49.8)
	112,0 (370)						112,0 (370)	10,2 (21.6)	12,8 (27.3)	15,8 (33.9)	18,7 (40.1)
	128,0 (420)						128,0 (420)				8,8 (19.4)

For complete chart, refer to www.cranelibrary.com.

Manitowoc Crane Care

Manitowoc Crane Care is the industry's most advanced service and support program, designed to keep your cranes up and running. Manitowoc's distributor network and customer support personnel are available to support you 24 hours a day, 7 days a week, 365 days a year. There are five key disciplines of Manitowoc Crane Care:

Parts

Genuine Manitowoc replacement parts are accessible through your distributor.

Service and technical support

Assistance with crane selection, lift planning and ground bearing calculations or field service and maintenance.

Technical publications

Operator, parts, service and capacity chart manuals are available in multiple formats in major languages.

Training

A variety of training courses are available online or through Manitowoc training centers.

EnCORE

Rebuild, repair, remanufacture or exchange your current crane through our local network, for a fraction of the cost of a new crane.

www.manitowoccranecare.com

CraneSTAR

CraneSTAR is an exclusive and innovative crane asset management system that helps improve your profitability and reduce costs by remotely monitoring critical crane data. Visit www.cranestar.com for more information.

Manitowoc Cranes

Regional headquarters

Americas

Manitowoc, Wisconsin, USA

Tel: +1 920 684 6621

Fax: +1 920 683 6277

Shady Grove, Pennsylvania, USA

Tel: +1 717 597 8121

Fax: +1 717 597 4062

Europe, Middle East, Africa

Ecully, France

Tel: +33 (0)4 72 18 20 20

Fax: +33 (0)4 72 18 20 00

China

Shanghai, China

Tel: +86 21 6457 0066

Fax: +86 21 6457 4955

Greater Asia-Pacific

Singapore

Tel: +65 6264 1188

Fax: +65 6862 4040

Regional offices

Americas

Brazil

Alphaville

Mexico

Monterrey

Chile

Santiago

Europe, Middle East,

Africa

France

Baudemont

Cergy

Decines

Germany

Langenfeld

Italy

Lainate

Netherlands

Breda

Poland

Warsaw

Portugal

Baltar

Russia

Moscow

South Africa

Johannesburg

U.A.E.

Dubai

U.K.

Buckingham

China

Beijing

Chengdu

Guangzhou

Xian

Greater Asia-Pacific

Australia

Brisbane

Melbourne

Sydney

India

Chennai

Delhi

Hyderabad

Pune

Korea

Seoul

Philippines

Makati City

Singapore

Factories

Brazil

Passo Fundo

China

TaiAn

Zhangjiagang

France

Charlieu

Moulins

Germany

Wilhelmshaven

India

Pune

Italy

Niella Tanaro

Portugal

Baltar

Fânzeres

Slovakia

Saris

USA

Manitowoc

Port Washington

Shady Grove

This document is non-contractual. Constant improvement and engineering progress make it necessary that we reserve the right to make specification, equipment, and price changes without notice. Illustrations shown may include optional equipment and accessories and may not include all standard equipment.