



GROVE®

GRT780

Capacity: 80 USt (80 t)

Main boom: 155.1 ft (47,3 m)

Max. boom extension: 33 ft – 56 ft (10.1 m – 17.1 m)

Max. tip height: 220 ft (67 m)

Best-in-class reach and lifting

155.1 ft (47,3 m) five-section, full power MEGAFORM boom. Fast and simple operation, combined with best in class reach and lifting performance.

Versatile counterweight options

17,500 lb (7938 kg) or 20,500 lb (9299 kg) counterweight options combine maximum capacities with easy transportability. Hydraulically removable counterweight option available.

Quick erection and added versatility

33 – 56 ft (10,1 – 17,1 m)
Bi-fold swingaway extension.

Convenient setup and rigging

New carrier design with flat aluminum decking, increased storage & full LED lighting package.

Maximum comfort

New wider, full vision cab with 20° cab tilt and CCS 1+ with 12-inch touch screen display for intuitive operation.

Increased capacity

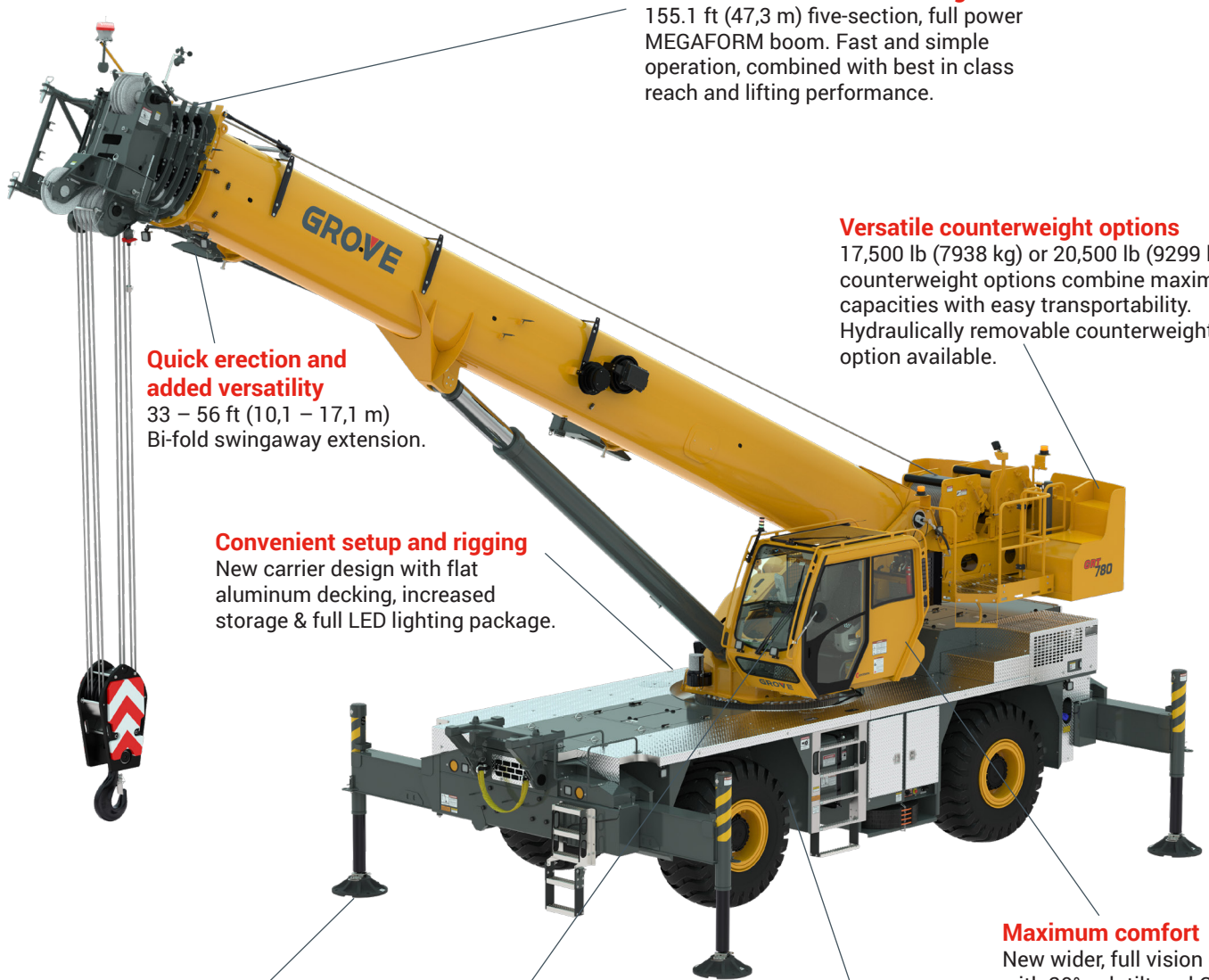
MAXbase variable outrigger positioning system for increased lift capacities and easy access to any jobsite.

Tech to maximize uptime

Grove's oCSI and Connect fleet management system provide on board diagnostics as well as remote monitoring.

Easy transportation

Compact dimensions, under 10 ft (3 m) wide & lightweight GVW – easy transportation to the job & excellent maneuverability once on site.



GRT780

CCS 1+

- The same Crane Control System you've come to expect on Grove Rough Terrain cranes, now on a single 12 inch (30.5 cm) touchscreen display
- Simple, intuitive functionality for quick set-up and enhanced operation
- New driving mode includes steering indication, fore and aft as well as side to side slope indication, travel speed and more

MAXbase

- Asymmetrical outrigger positioning systems that allows for maximum accessibility on any jobsite
- Provides increased capacities vs. standard 360° load charts for increased utilization & lower project costs
- Panorama view via the CCS display provides real time visual feedback to the operator with built in function stops when limits reached

oCSI

- Enhanced diagnostics and monitoring systems for easy serviceability
- On-board monitoring of all hydraulic pressures from the cab
- On-board calibration of sensors via use of day code

Grove CONNECT

- Telematics system that provides easy access to your complete fleet in real time
- View live crane activity, configuration, RCL data, GPS, faults, hours and more
- Create reports based around maintenance programs, crane utilization, crane performance, software status, maintenance alerts, etc.
- Manage fleets with automatic maintenance alerts, service-related observations, and parts ordering before dispatch

		39.2 ft - 155.1ft			20,500 lb			100%			360°										
		Pounds																			
Radius (ft)	Main Boom Length (ft)																				
	39.2	53.7	53.7	68.2	68.2	68.2	82.7	82.7	82.7	97.2	97.2	97.2	111.7	111.7	111.7	126.2	126.2	126.2	140.6	140.6	155.1
Mode	A, X, B	A	X, B	A	X	B	A	X	B	A	X	B	A	X	B	A	X	B	A, X	B	A, X, B
8	160,000 (72.5)	46,650 (76.5)	117,500 (78.5)	-	-	-	-	-	-	-	-	-	-	-	-	-	-	-	-	-	-
10	135,000 (70.5)	46,650 (76.5)	117,500 (76.5)	46,500 (79.5)	57,850 (80)	37,950 (80)	-	-	-	-	-	-	-	-	-	-	-	-	-	-	-
12	120,500 (67)	46,650 (74)	117,500 (74)	46,500 (78)	57,850 (78)	37,950 (78)	*46,350 (80)	*57,700 (80)	*37,800 (80)	-	-	-	-	-	-	-	-	-	-	-	-
15	103,500 (62)	46,650 (70.5)	102,500 (75.5)	46,500 (75.5)	57,850 (75.5)	37,950 (75.5)	46,350 (78.5)	57,700 (78.5)	37,800 (78.5)	*29,000 (80)	*55,450 (80)	*37,700 (80)	-	-	-	-	-	-	-	-	-
20	80,750 (53)	46,650 (64.5)	79,750 (64.5)	46,500 (71)	57,850 (71)	37,950 (71)	46,350 (74.5)	57,700 (74.5)	37,800 (74.5)	29,000 (77.5)	55,450 (77.5)	37,700 (77.5)	13,550 (79.5)	39,500 (79.5)	37,650 (79.5)	*8,520 (80)	*28,500 (80)	*29,000 (80)	-	-	-
25	61,050 (42.5)	46,650 (58.5)	60,100 (58.5)	46,500 (66)	57,850 (66.5)	37,950 (66.5)	46,350 (71)	57,700 (71)	37,800 (71)	29,000 (74.5)	55,450 (74.5)	37,700 (74.5)	13,550 (77)	39,500 (77)	37,650 (77)	8,520 (79)	28,500 (79)	29,000 (79)	*21,350 (80)	*23,300 (80)	-
30	48,000 (27.5)	46,650 (51.5)	47,100 (51.5)	46,500 (61.5)	49,100 (61.5)	37,950 (61.5)	45,300 (67)	50,350 (67)	37,800 (67.5)	29,000 (71.5)	50,100 (71.5)	37,700 (71.5)	13,550 (74)	36,400 (74)	37,150 (74)	8,520 (76.5)	28,500 (76.5)	29,000 (76.5)	21,350 (78.5)	23,300 (78.5)	18,000 (80)
35	-	41,150 (44)	37,900 (44)	42,400 (56.5)	39,900 (56.5)	37,350 (56.5)	40,450 (63.5)	41,150 (63.5)	36,950 (63.5)	29,000 (66)	42,000 (66)	33,850 (66)	13,550 (71.5)	32,800 (71.5)	32,300 (71.5)	8,520 (74)	28,500 (74)	29,000 (74)	21,350 (76.5)	23,300 (76.5)	18,000 (78)
40	-	32,550 (34.5)	29,600 (34.5)	34,300 (51)	31,050 (51)	28,800 (51)	35,100 (59.5)	32,300 (59.5)	30,500 (59.5)	27,050 (64.5)	33,550 (64.5)	29,450 (64.5)	13,550 (68.5)	29,800 (68.5)	28,150 (68.5)	8,520 (71.5)	27,900 (71.5)	27,050 (71.5)	21,350 (74)	23,300 (74)	18,000 (76)
45	-	25,650 (21.5)	23,050 (21.5)	27,600 (45)	24,700 (45)	22,650 (45)	28,600 (55)	25,900 (55)	23,800 (55)	24,600 (61.5)	27,150 (61.5)	25,000 (61.5)	13,550 (66)	27,250 (66)	24,750 (66)	8,520 (69)	25,350 (69)	23,900 (69)	21,350 (72)	22,700 (72)	18,000 (74)
50	-	-	-	22,600 (38)	19,950 (38)	17,950 (38)	23,800 (50.5)	21,150 (50.5)	19,200 (50.5)	22,550 (58)	22,400 (58)	20,350 (58)	13,550 (63)	22,850 (63)	21,500 (63)	8,520 (66.5)	23,050 (66.5)	21,200 (66.5)	20,650 (69.5)	20,500 (70)	18,000 (72)
55	-	-	-	18,650 (29.5)	16,150 (29.5)	14,000 (29.5)	20,100 (45.5)	17,500 (45.5)	16,450 (45.5)	20,350 (54)	18,700 (54)	16,750 (54)	13,550 (60)	19,150 (60)	17,850 (60)	8,520 (64)	19,500 (64)	18,350 (64)	18,950 (67.5)	18,400 (67.5)	17,450 (70)
60	-	-	-	15,550 (17)	13,150 (17)	10,850 (17)	17,150 (40)	14,550 (40)	12,400 (40)	15,800 (50)	13,800 (50)	12,500 (50.5)	13,550 (57)	16,150 (57)	15,000 (57)	8,520 (61.5)	16,550 (61.5)	15,450 (61.5)	16,950 (65)	15,950 (65.5)	15,000 (68)
65	-	-	-	-	-	-	14,700 (34)	12,100 (34)	9,910 (34)	15,050 (46)	13,300 (46)	11,350 (46)	13,550 (53.5)	13,750 (53.5)	12,650 (53.5)	8,520 (59)	14,150 (59)	13,100 (59)	14,600 (63)	13,600 (63)	14,000 (66)
70	-	-	-	-	-	-	12,650 (26)	10,050 (26)	7,810 (26)	13,050 (41.5)	11,300 (41.5)	9,360 (41.5)	13,350 (50)	11,750 (50)	10,700 (50)	8,520 (56)	12,200 (56)	11,150 (56)	12,650 (60.5)	11,600 (60.5)	12,000 (64)
75	-	-	-	-	-	-	10,900 (18.5)	8,330 (18.5)	6,040 (14)	11,350 (36.5)	9,580 (36.5)	7,640 (36.5)	11,700 (46.5)	10,050 (46.5)	9,100 (46.5)	8,520 (53)	10,500 (53)	9,540 (53)	11,000 (58)	9,960 (58)	10,350 (62)
80	-	-	-	-	-	-	-	-	-	9,880 (30.5)	8,080 (30.5)	6,150 (30.5)	10,250 (42.5)	8,630 (42.5)	7,650 (42.5)	8,520 (50)	9,120 (50)	8,080 (50)	9,610 (55.5)	8,520 (55.5)	8,960 (60)
85	-	-	-	-	-	-	-	-	-	8,580 (23)	6,780 (23)	4,850 (23.5)	9,040 (38.5)	7,380 (38.5)	6,380 (38.5)	8,520 (47)	7,890 (47)	6,830 (47)	8,400 (53)	7,290 (53)	7,740 (57.5)
90	-	-	-	-	-	-	-	-	-	7,440 (10.5)	5,650 (10.5)	3,730 (10.5)	7,910 (33.5)	6,270 (33.5)	5,240 (33.5)	8,240 (43.5)	6,820 (43.5)	5,740 (43.5)	7,350 (50)	6,210 (50.5)	6,680 (55)
95	-	-	-	-	-	-	-	-	-	-	-	-	6,920 (28)	5,290 (28)	4,240 (28)	7,290 (40)	5,880 (40)	4,780 (40)	6,420 (47.5)	5,260 (47.5)	5,750 (53)
100	-	-	-	-	-	-	-	-	-	-	-	-	6,040 (21)	4,410 (21)	3,350 (21)	6,430 (36)	5,030 (36)	3,910 (36)	5,600 (44.5)	4,420 (44.5)	4,900 (50.5)
105	-	-	-	-	-	-	-	-	-	-	-	-	5,250 (7.5)	3,640 (7.5)	2,550 (7.5)	5,660 (31.5)	4,260 (31.5)	3,130 (31.5)	4,860 (41)	3,670 (41.5)	4,140 (48)
110	-	-	-	-	-	-	-	-	-	-	-	-	-	-	-	4,370 (26)	3,570 (26)	2,430 (26)	4,980 (37.5)	3,450 (38)	4,450 (45)
115	-	-	-	-	-	-	-	-	-	-	-	-	-	-	-	4,340 (19)	2,950 (19.5)	1,790 (19.5)	3,540 (34)	2,370 (34)	2,830 (42)
120	-	-	-	-	-	-	-	-	-	-	-	-	-	-	-	-	-	-	2,960 (29.5)	1,790 (29.5)	2,270 (39)
125	-	-	-	-	-	-	-	-	-	-	-	-	-	-	-	-	-	-	2,430 (24.5)	1,260 (24.5)	1,740 (35)
130	-	-	-	-	-	-	-	-	-	-	-	-	-	-	-	-	-	-	1,360 (17.5)	-	1,250 (32)

NOTE: () Boom angles are in degrees.
 *This capacity is based on maximum boom angle.
 †Special equipment required to lift this capacity.

