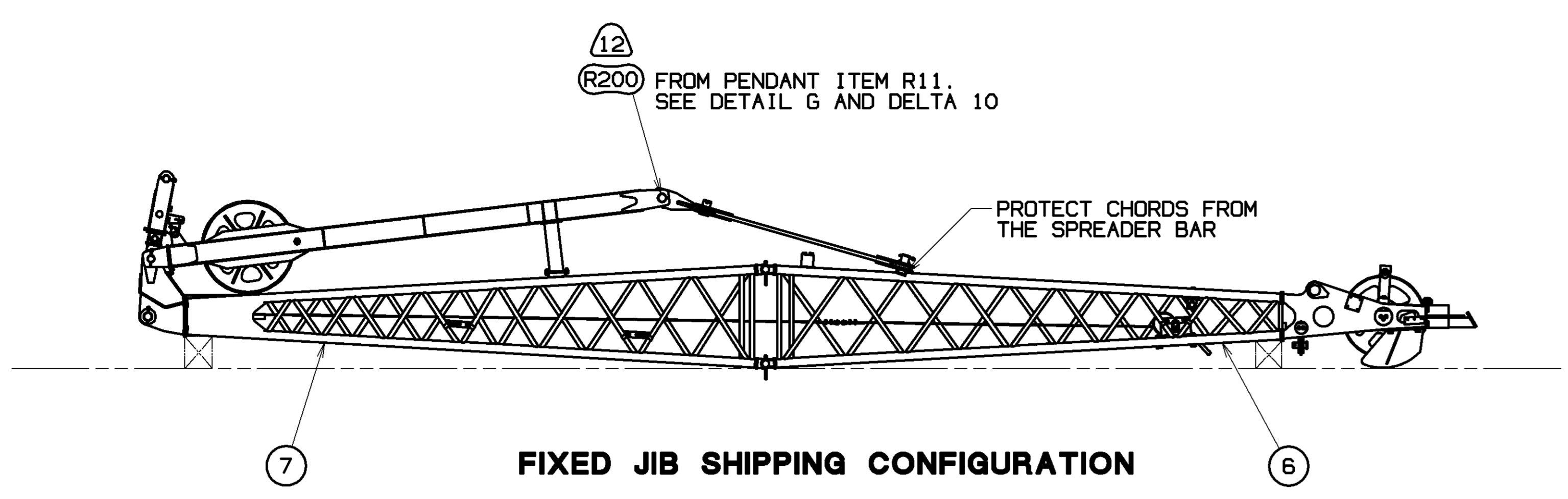


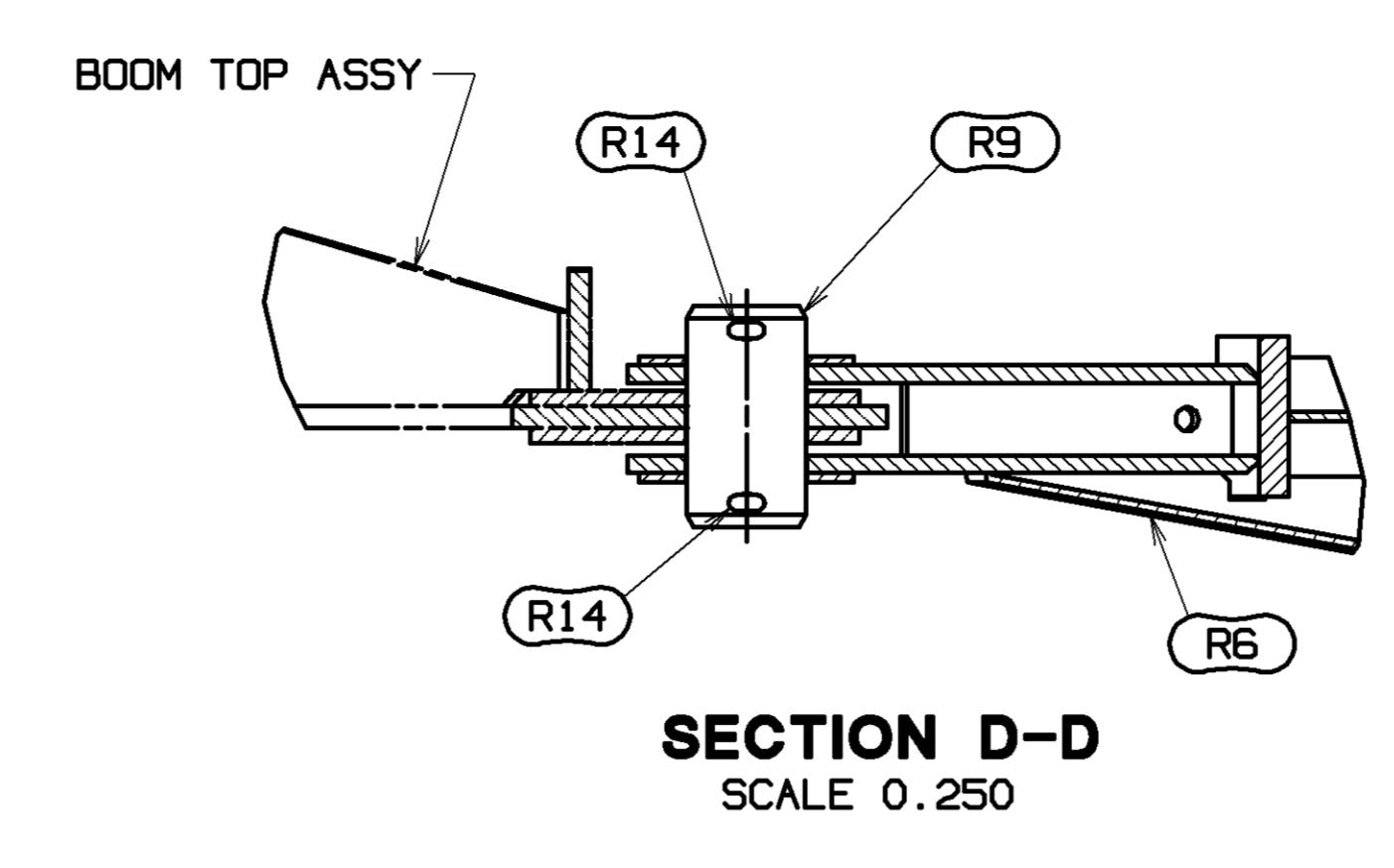
80117860
SHT 2 OF 4

PRIVATE LABELING
REQUIREMENT TO
CONFORM TO
ENGINEERING
SPECIFICATION
6829103794 FOR
COMPONENTS LISTED
IN SECTION 05-006
DATE
01-27-21
REV. LVL.
B

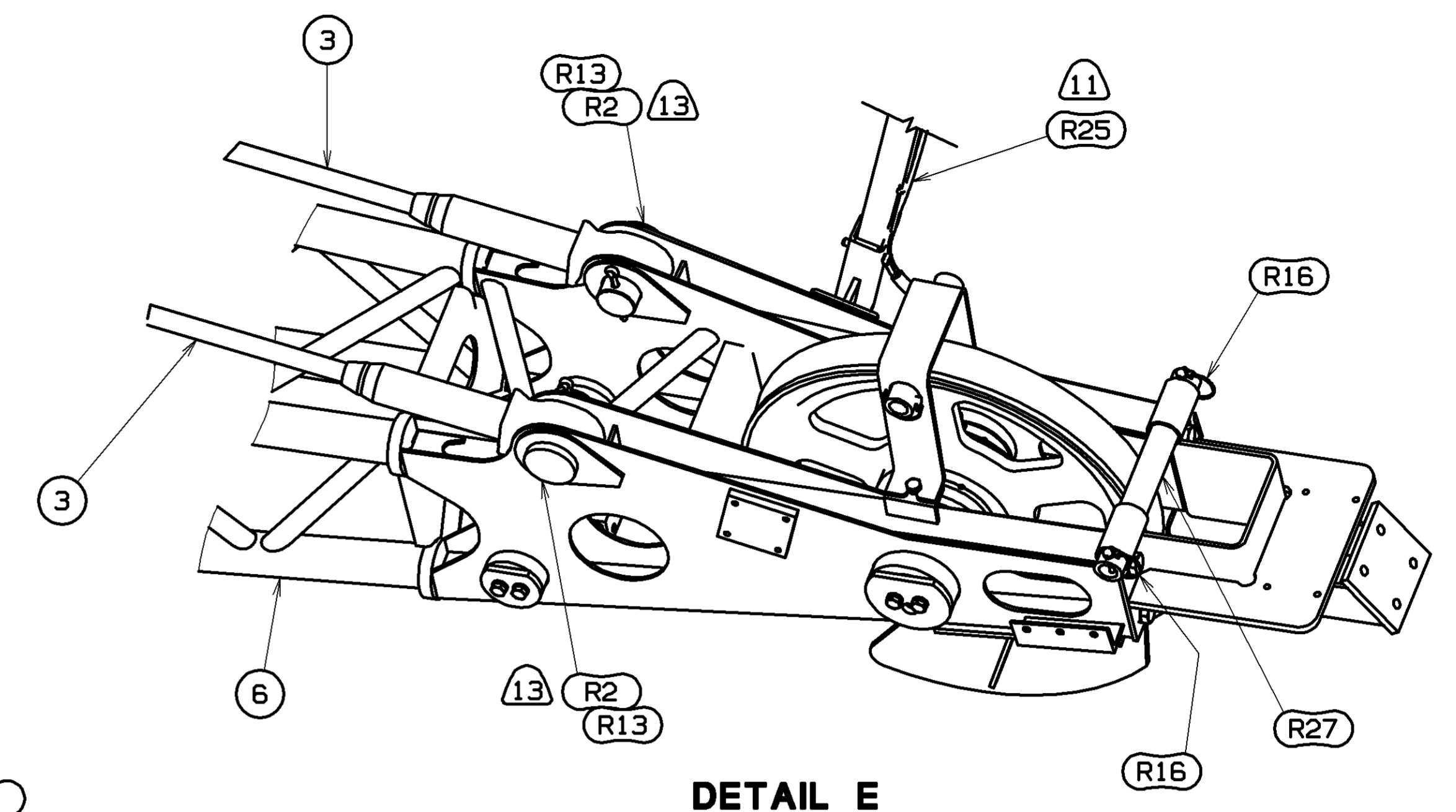
TOLERANCE UNLESS OTHERWISE SPECIFIED		MANUFACTURING	MANITOWOC CRANES, INC.
DECIMAL PLACES	FABRICATION	DR: RHY	Manitowoc, Wisconsin
(1) PLACE 0.5	± 0.12	± 0.18	± 0.05
(2) PLACE 0.00	± 0.08	± 0.12	± 0.015
(3) PLACE 0.000	± 0.008	± 0.008	± 0.002
ANGLES	± 1.0°	± 0.5°	± 0.1°
THIS PRINT REMAINS THE PROPERTY OF MANITOWOC CRANES, INC. ALL INFORMATION CONTAINED HEREIN IS CONFIDENTIAL. IT IS LOANED, SUBJECT TO RETURN UPON DEMAND, AND ON EXPRESS CONDITION THAT IT IS NOT TO BE COPIED OR USED DIRECTLY OR INDIRECTLY IN ANY MANNER DETRIMENTAL TO OUR INTERESTS.		APP: JRR	MLC250 B3
		MLC150-1	JIB RIGGING
		JIB NO. 134 B2	



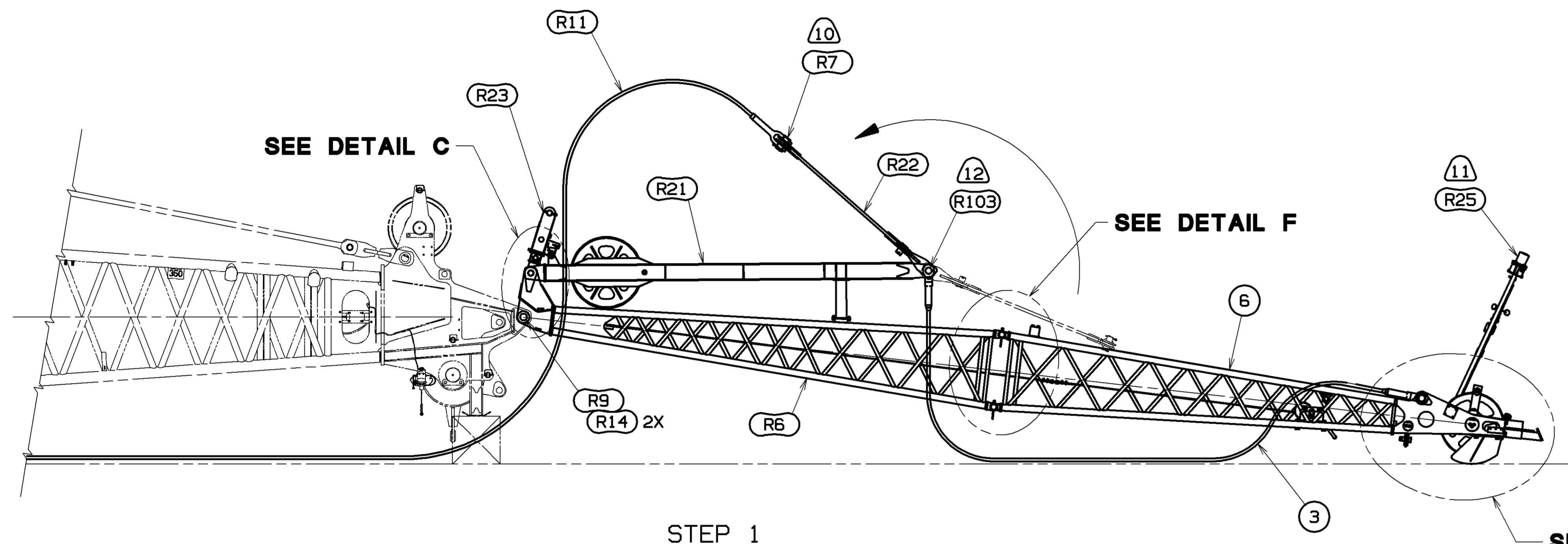
FIXED JIB SHIPPING CONFIGURATION



SECTION D-D
SCALE 0.250



DETAIL E
SCALE 0.150



STEP 1

JIB TO BOOM TOP ASSEMBLY AND FRONTSTAY & BACKSTAY PENDANT INSTALLATION

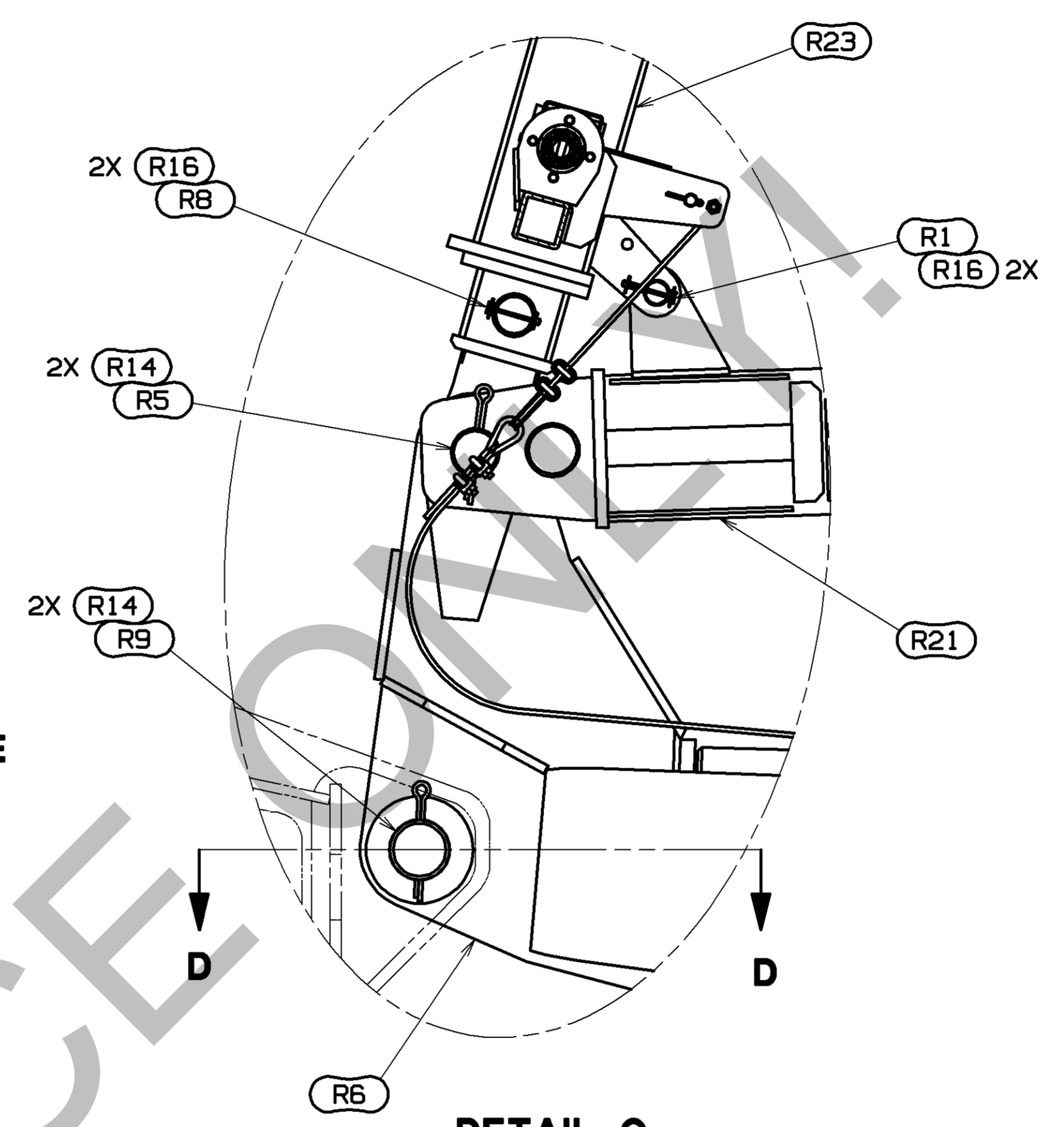
RIG BOOM PER MAIN BOOM RIGGING DRAWING (MLC150-1: 80117858) (MLC250: 80137888) B9
 TEMPORARILY REMOVE JIB HINGE HARDWARE (R9 & R14) FROM JIB BUTT ASSY (R6 OF ITEM 7). (SEE DETAIL C).
 USING AN ASSIST ALIGN JIB BUTT ASSY (R6 OF ITEM 7) TO BLOCKED BOOM TOP AS SHOWN.
 REINSTALL JIB HINGE HARDWARE (R9 & R14). (SEE DETAIL C).

ASSEMBLE JIB INSERTS (ITEMS 103 AND 104) AND JIB TOP (ITEM 6) TO JIB BUTT ASSY (R6 OF ITEM 7) PER DESIRED JIB CONFIGURATION ON SHEET 2.
 INSTALL UPPER AND LOWER CONNECTOR PINS (R100) AND COTTERS (R101). (SEE DETAIL F).

ATTACH FRONTSTAY PENDANT (ITEM 3) TO JIB TOP ASSY (ITEM 6) USING PIN (R2) AND COTTER (R13). (SEE DETAIL E).
 PIN PENDANT TO PENDANT (SEE DETAIL B ON SHEET 1) PER DESIRED JIB LENGTH. (SEE JIB CONFIGURATION ON SHEET 2).
 PIN REMAINING FREE END OF FRONTSTAY PENDANT TO STRUT (R21) AND SPREADER (R22) ASSEMBLY. (SEE DETAIL G).

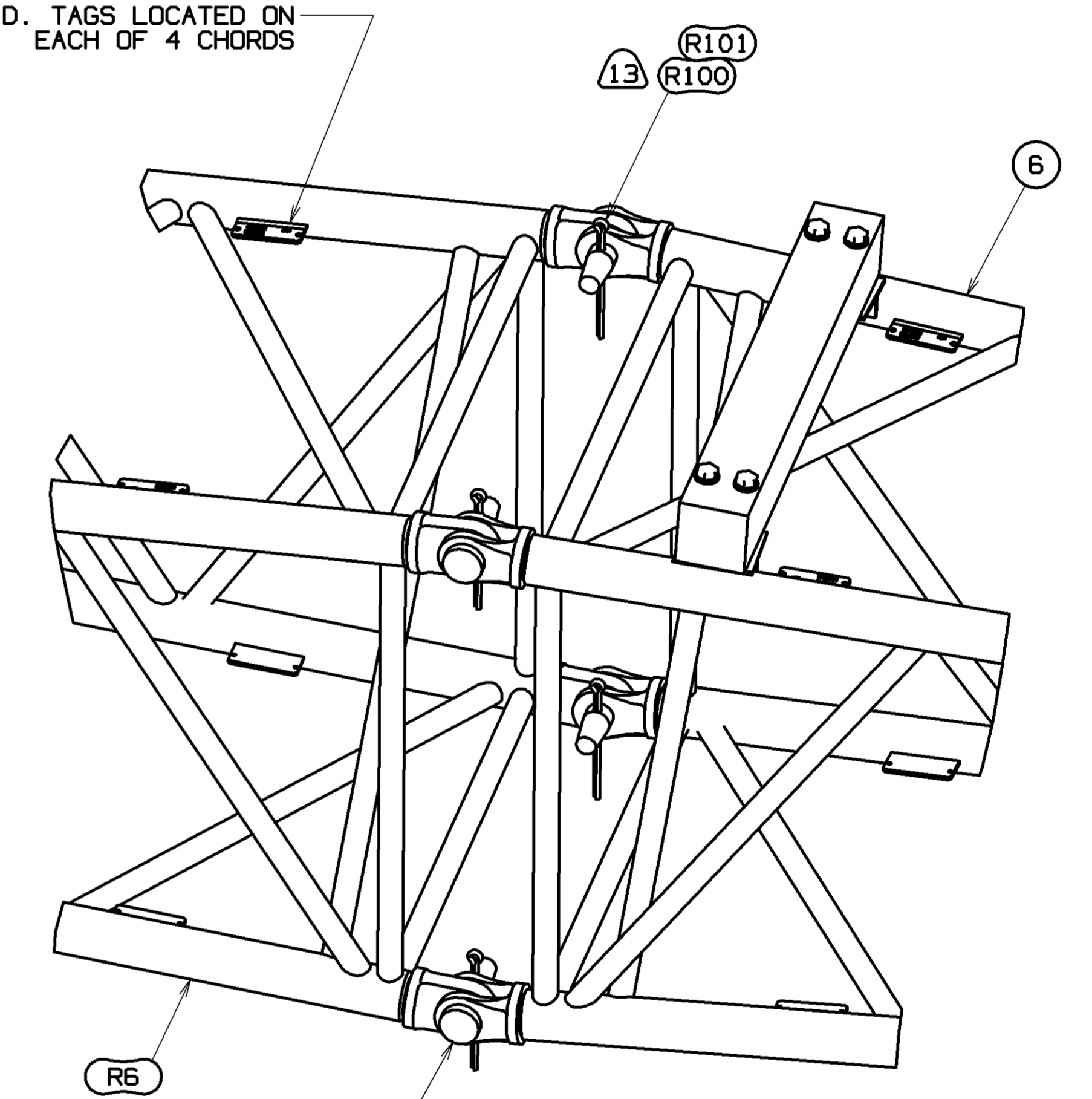
IF SHIPPED LOOSE, ATTACH BACKSTAY PENDANT (R11) TO SPREADER (R22) USING PIN (R7). (SEE DETAIL G).
 WITH SPREADER (R22) ROTATED TOWARD BOOM TOP AS SHOWN, LAY BACKSTAY PENDANT (R11) ON GROUND ALONGSIDE BOOM.
 IF JIB OFFSET IS TO BE 15° OR 25°, PIN REMAINING FREE END OF PENDANT (R11) TO EITHER LINK (ITEM 200) OR
 PENDANT (ITEM 202). (SEE APPROPRIATE DETAIL A AND JIB ANGLE TABLE ON SHEET 1).

SEE DETAIL E

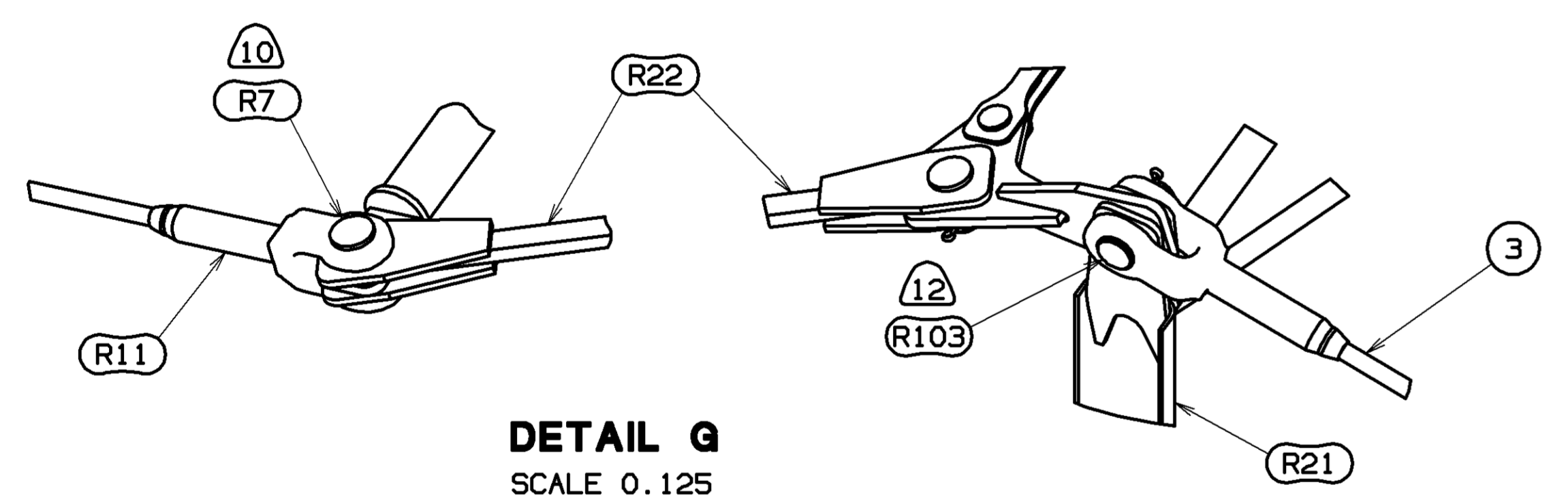


SECTION C AT JIB CENTERLINE
LOOKING TOWARDS FARSIDE
SCALE 0.200

I.D. TAGS LOCATED ON EACH OF 4 CHORDS

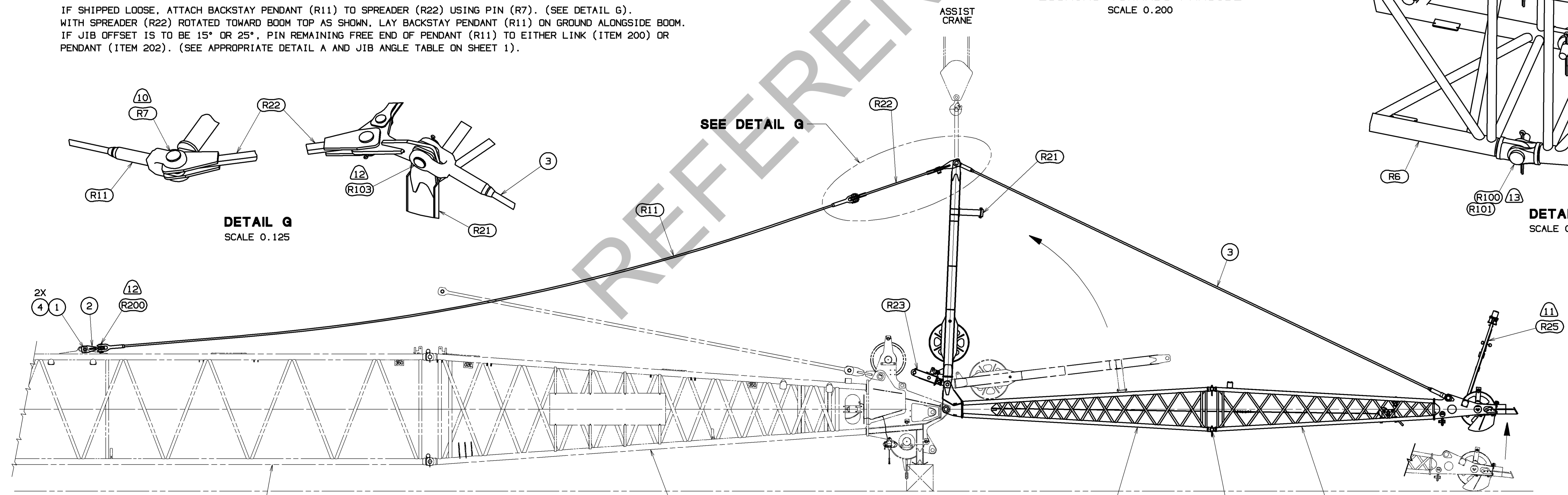


DETAIL F
SCALE 0.175



DETAIL G
SCALE 0.125

SEE DETAIL G



STEP 2

STRUT RAISING AND BACKSTAY PENDANT TO BOOM TOP

ATTACH BACKSTAY LINK (ITEM 2) TO BACKSTAY LUG ON BOOM 12M INSERT USING PIN (ITEM 1) AND COTTERS (ITEM 4). (SEE DETAIL A ON SHEET 1).

USING AN ASSIST SLOWLY LIFT STRUT (R21) TO ALLOW ATTACHMENT OF FREE END OF EITHER PENDANTS (R11 OR ITEM 202) OR LINK (ITEM 200) TO BACKSTAY LINK (ITEM 2).

NOTE:

RAISE JIB POINT WITH ASSIST (FORK-LIFT TRUCK OR ANOTHER CRANE) AS REQUIRED TO GAIN SLACK TO ALLOW PINNING OF THE BACKSTAY PENDANTS.

PENDANTS (R11 OR ITEM 202) ATTACH USING PENDANT SUPPLIED PIN. LINK (ITEM 200) ATTACHES USING PIN (ITEM 201) AND COTTER (ITEM 203). (SEE DETAILS A ON SHEET 1).

CAUTION:

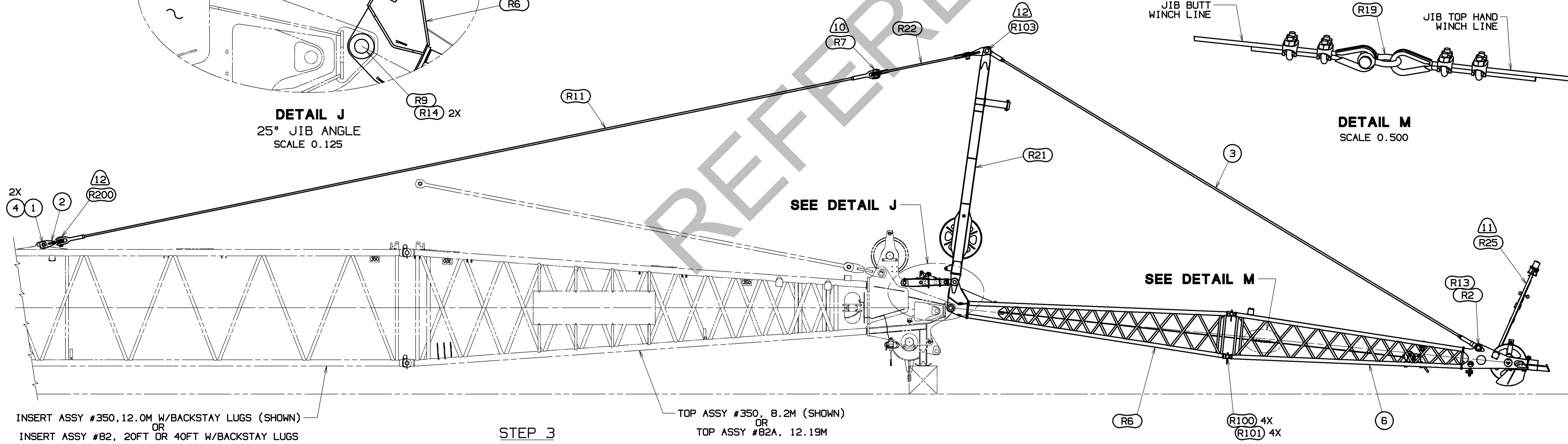
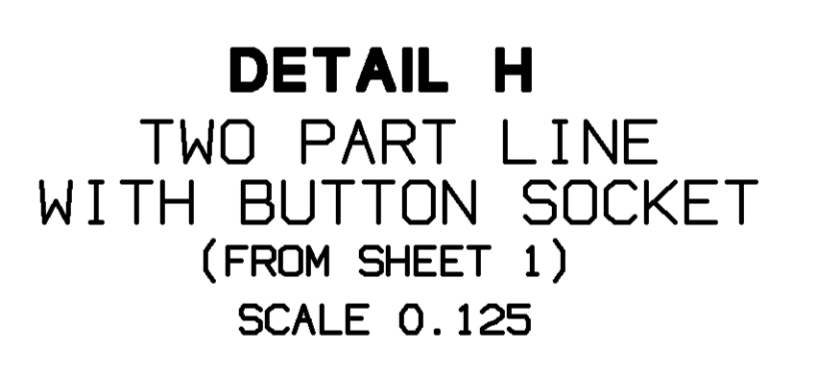
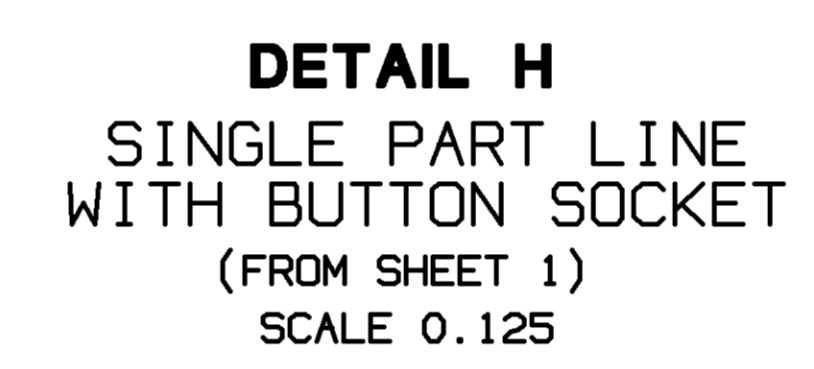
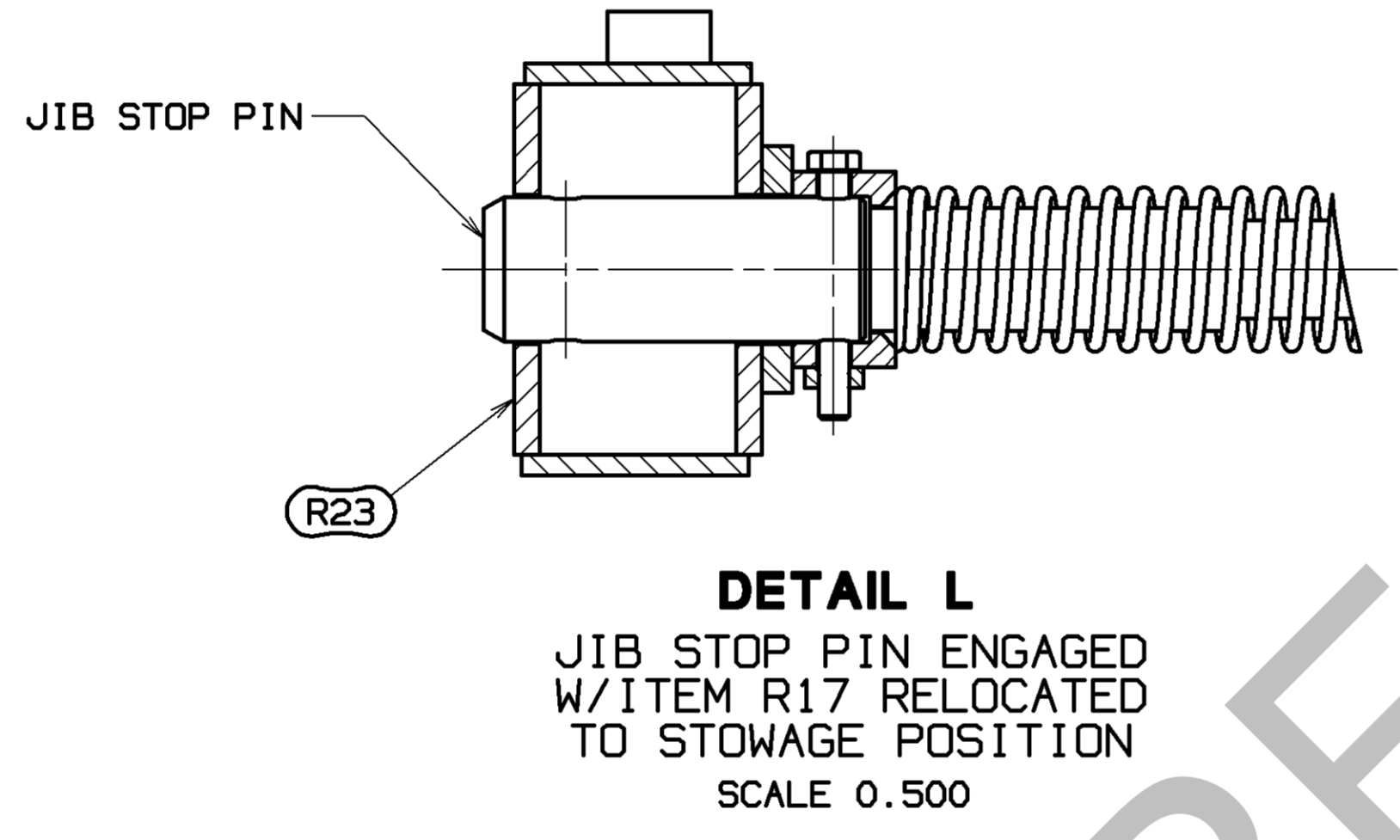
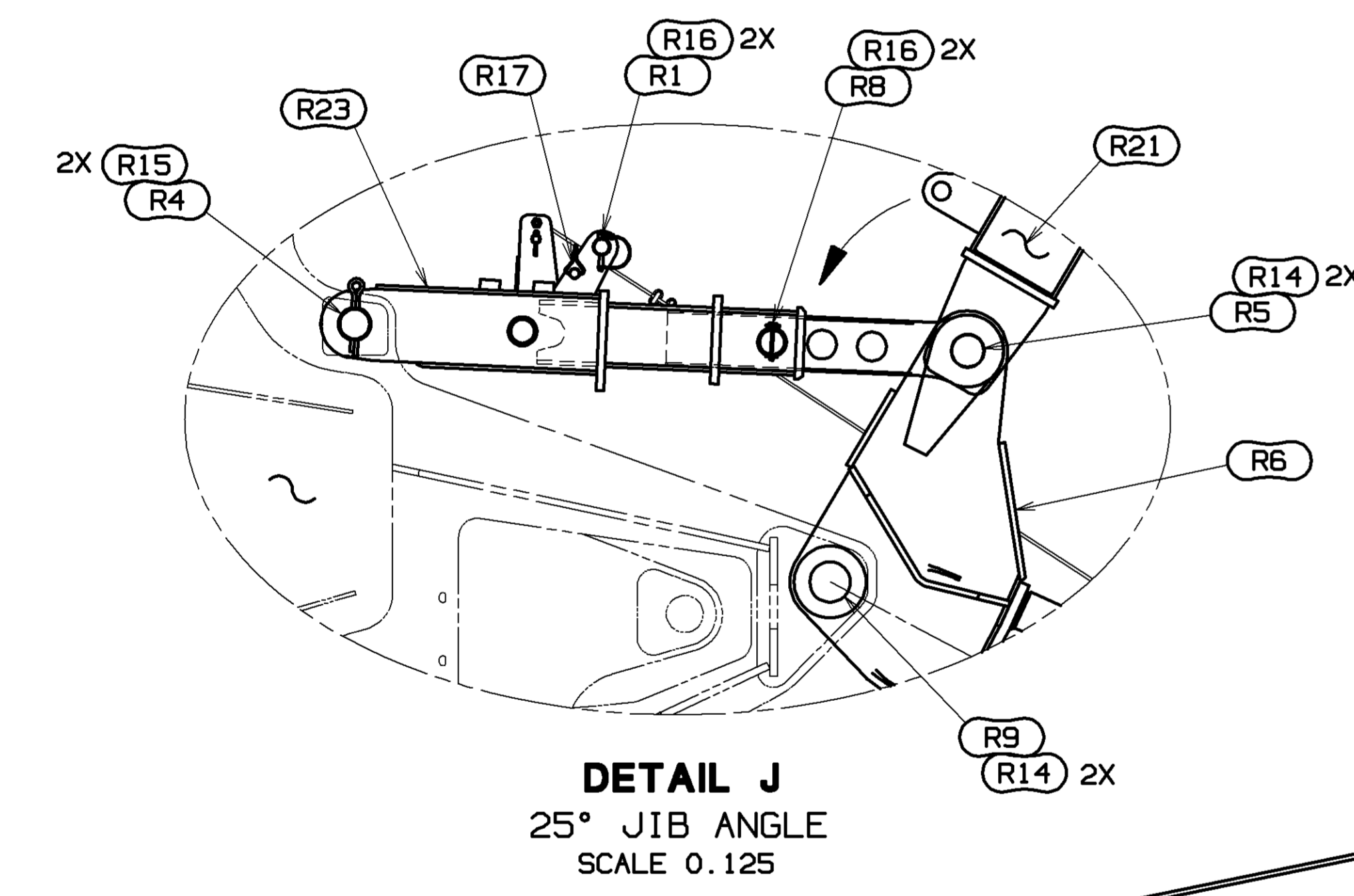
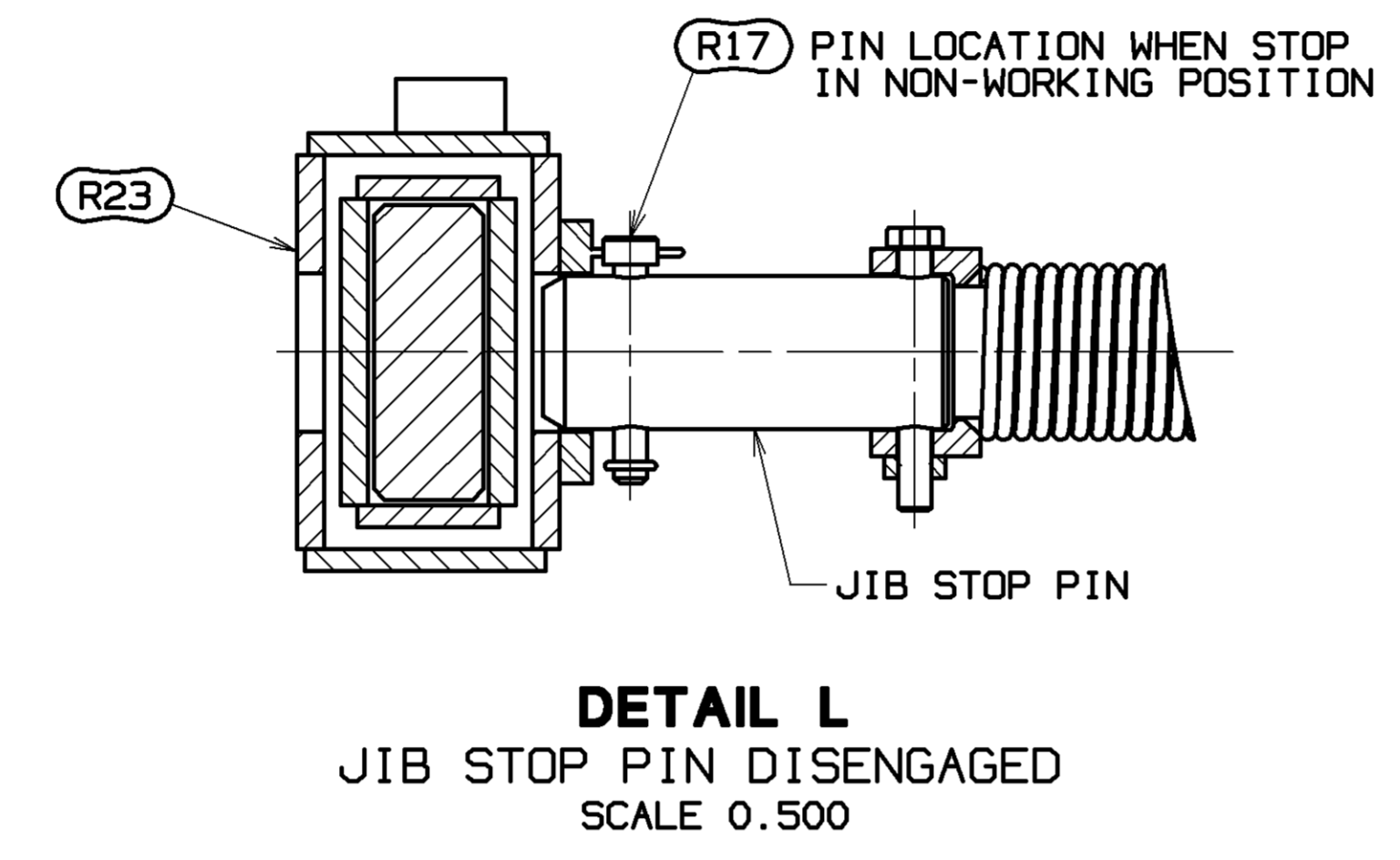
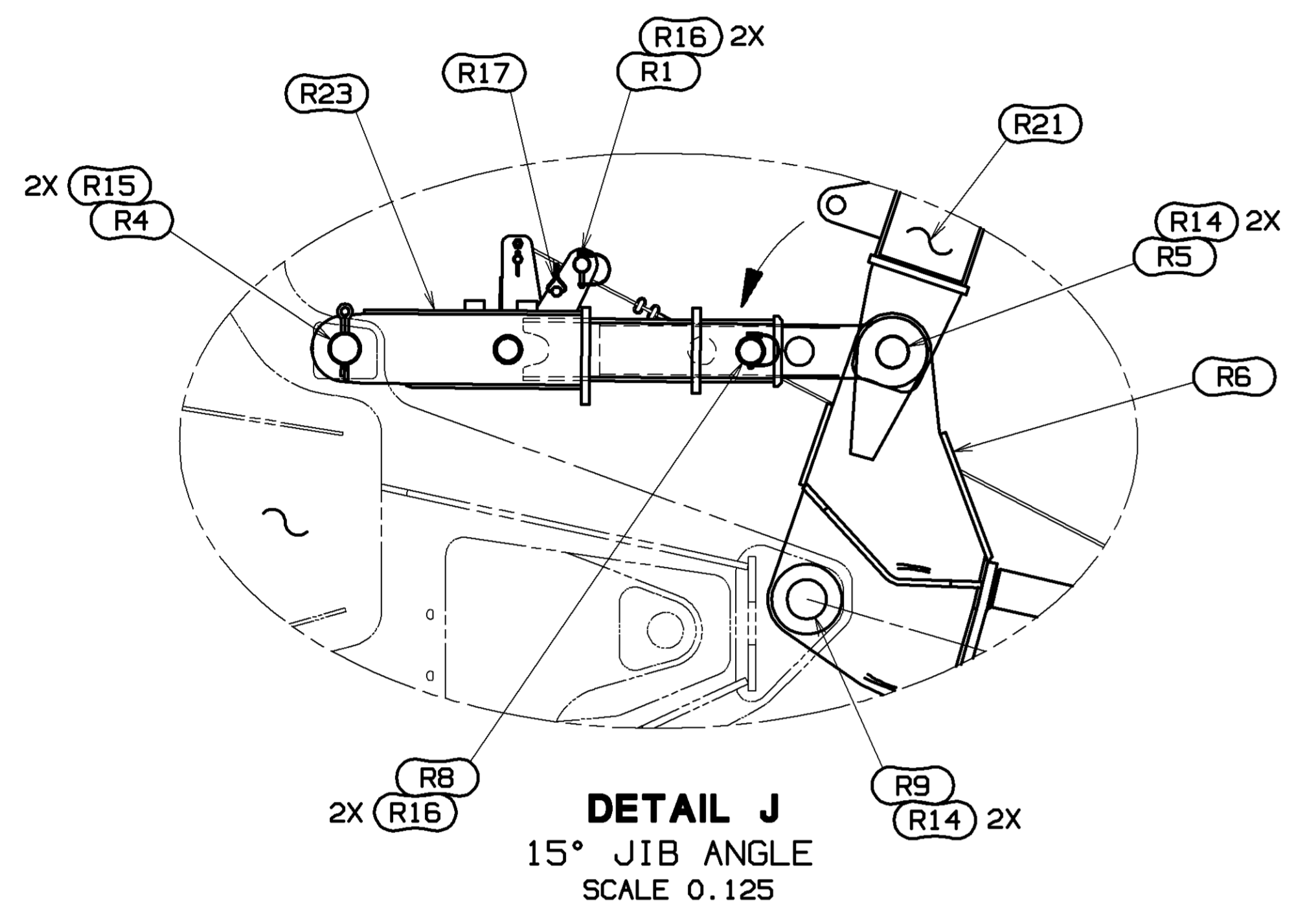
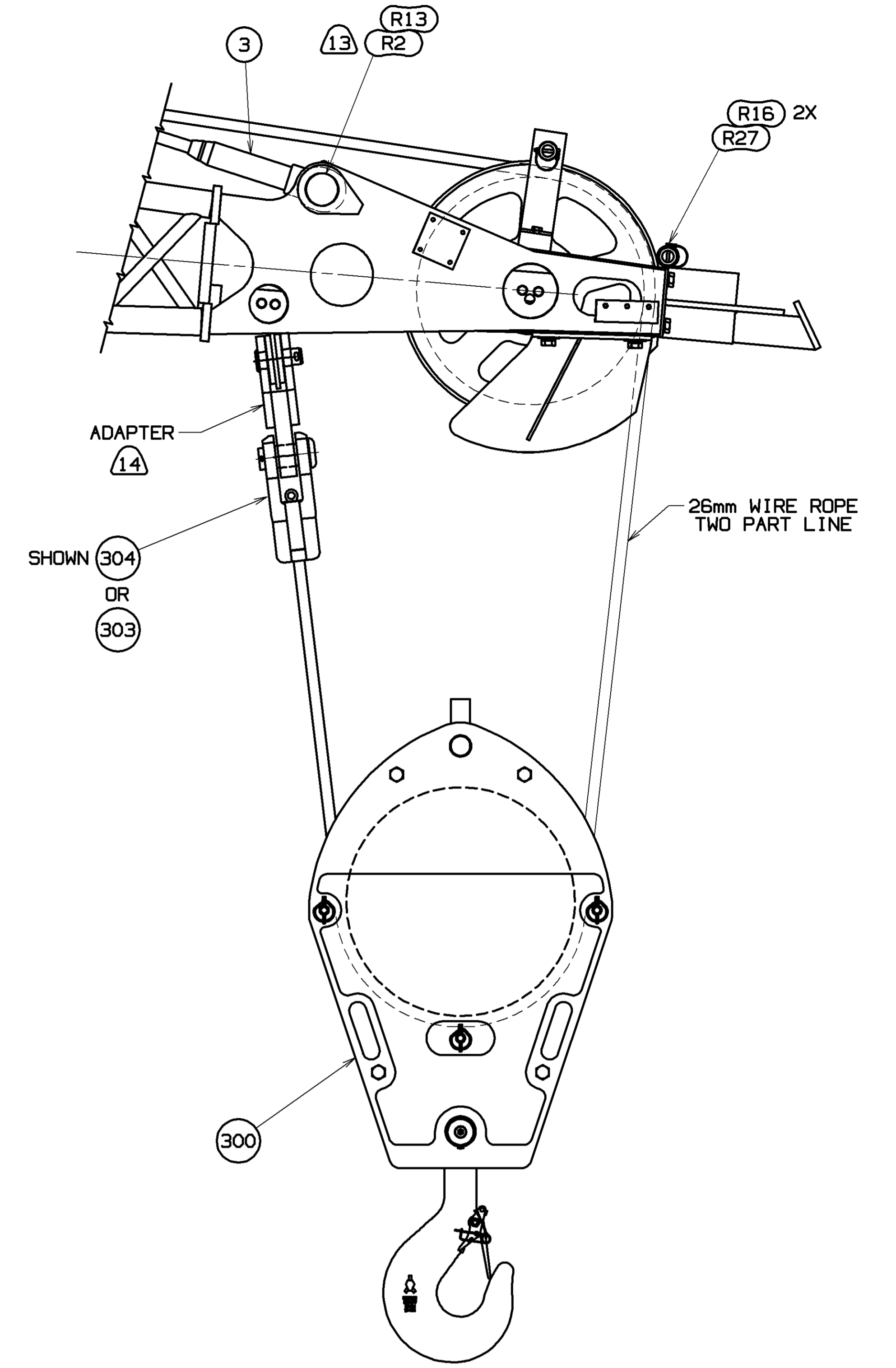
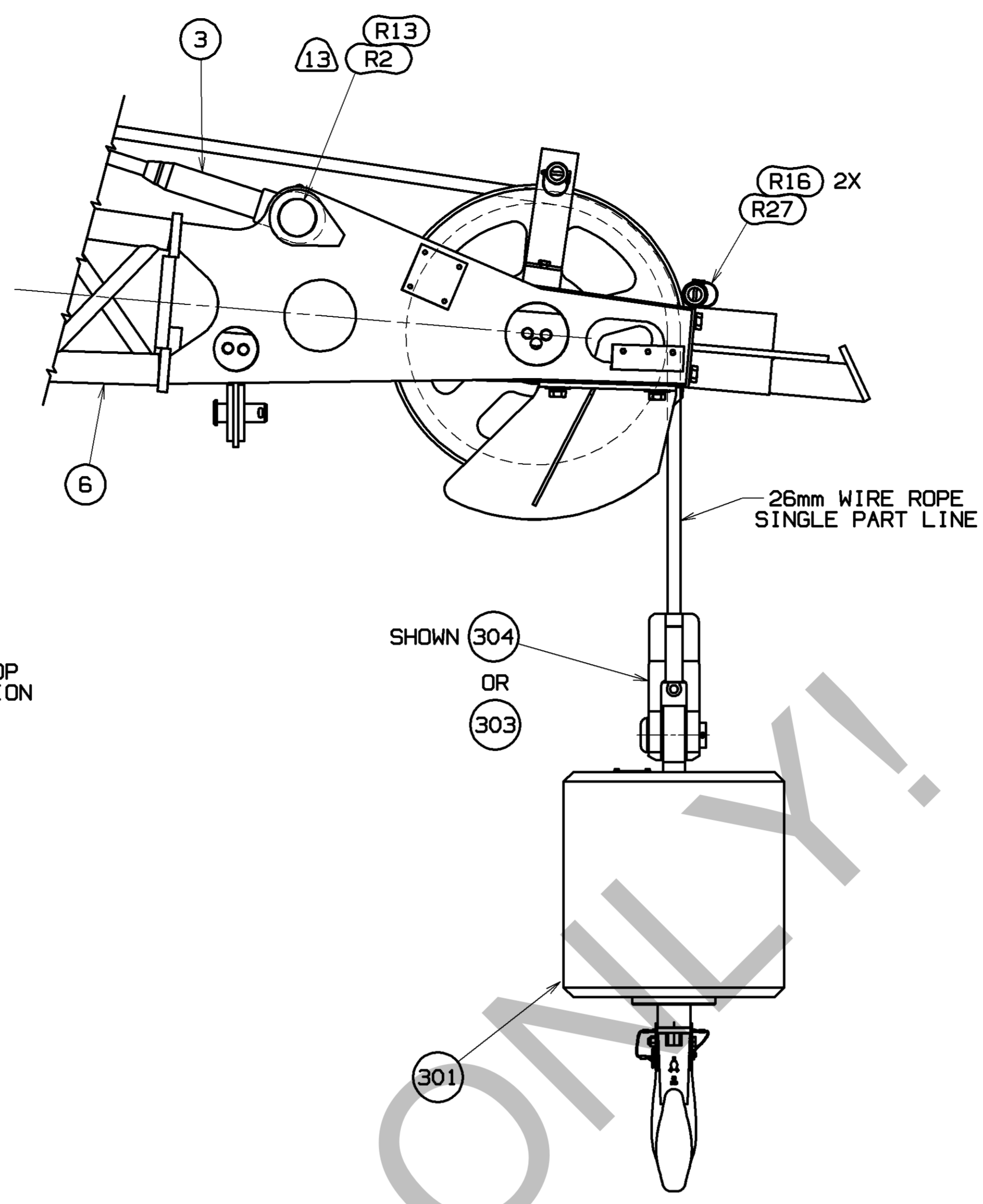
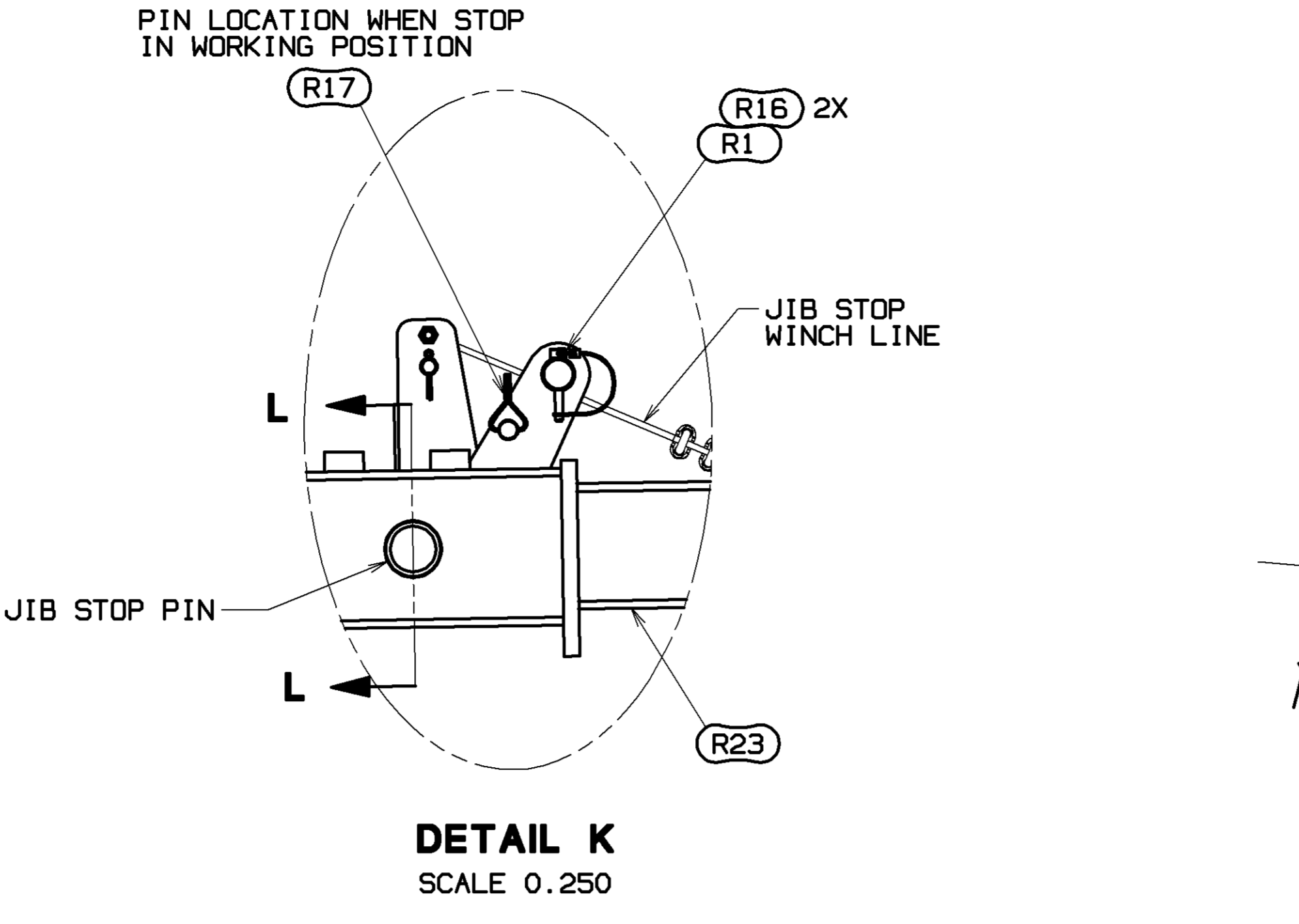
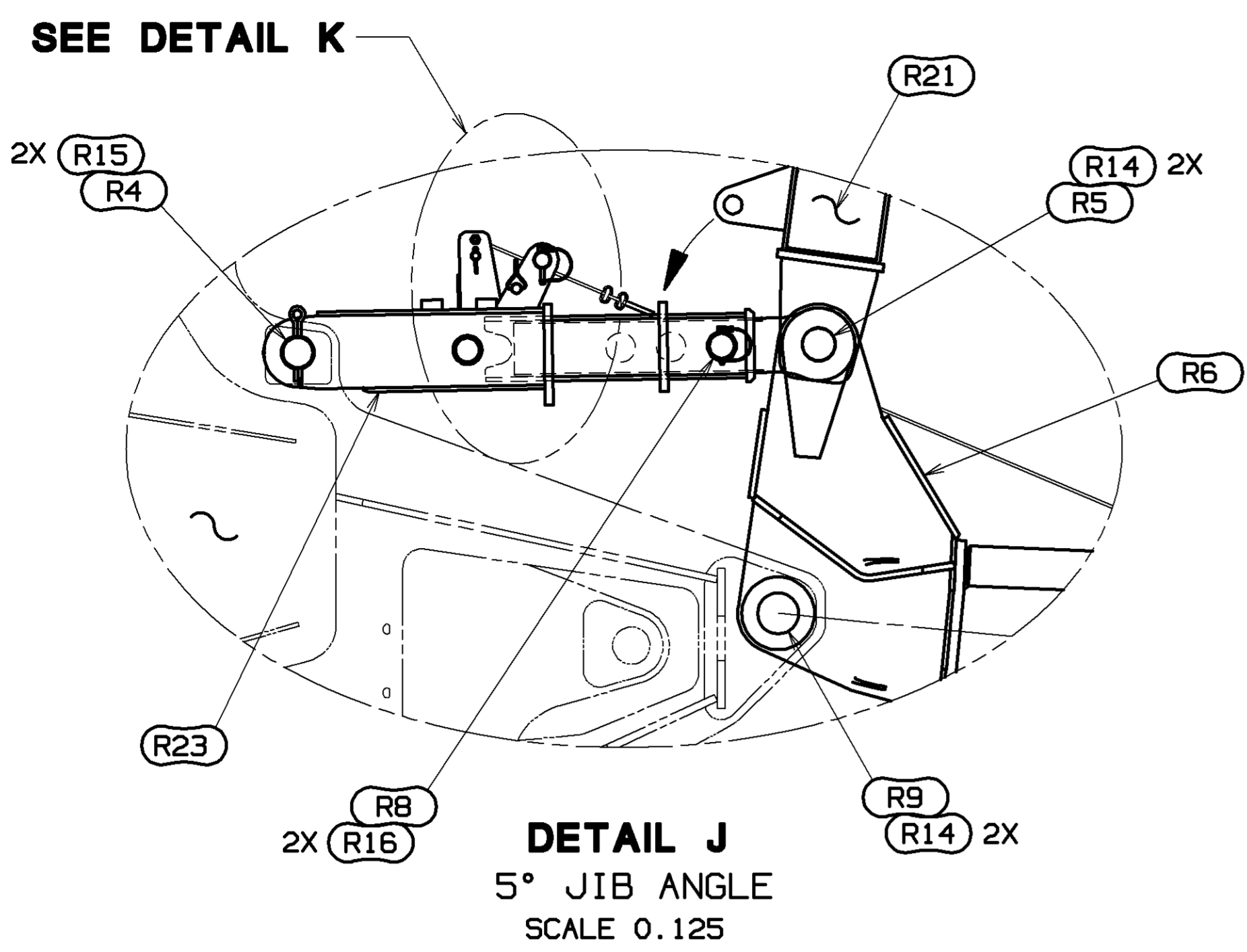
DO NOT SIDE LOAD STRUT WHILE LIFTING. DAMAGE TO STRUT MAY OCCUR.

INSERT ASSY #350, 12.0M W/BACKSTAY LUGS (SHOWN)
OR
INSERT ASSY #82, 20FT OR 40FT W/BACKSTAY LUGS

TOP ASSY #350, 8.2M (SHOWN)
OR
TOP ASSY #82A, 12.19M

TOLERANCE UNLESS OTHERWISE SPECIFIED		MATERIAL		MATERIAL		DATE	
DECIMAL PLACES	FABRICATION	DR. RHY	MLC150-1	MLC250	B3	01-27-21	REF. LIT. B1
(1) PLACE 0.5	±.12 ±.18 ±.05	DR. DLG	MLC150-1	JIB RIGGING	JIB NO. 134	B2	80117860
(2) PLACE 0.00	±.08 ±.12 ±.015	APP. JRR	MLC250	JIB NO. 134	B2	B3	80117860
(3) PLACE 0.000	±.008 ±.012 ±.003						
ANGLES	±1.3°						

PRIVATE LABELING
 REQUIREMENT TO
 CONFORM TO
 ENGINEERING
 SPECIFICATION
 6829103794 FOR
 COMPONENTS LISTED
 IN SECTION 05-006



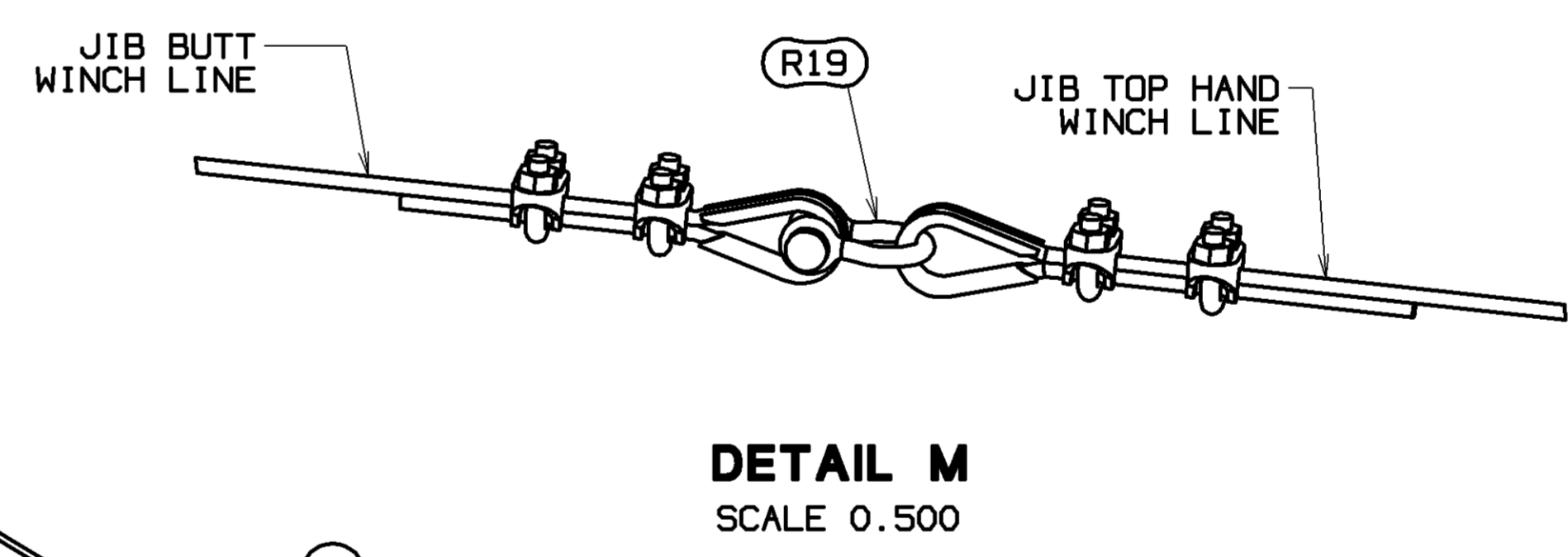
INSERT ASSY #350, 12.0M W/BACKSTAY LUGS (SHOWN) OR INSERT ASSY #82, 20FT OR 40FT W/BACKSTAY LUGS

TOP ASSY #350, 8.2M (SHOWN) OR TOP ASSY #82A, 12.19M

STOP ASSEMBLY INSTALLATION

- CAUTION:**
 SAFETY PIN (R17) IS NOT TO BE REMOVED FROM JIB STOP PIN UNTIL STOP ASSEMBLY (R23) IS PINNED TO BOOM TOP AND THE JIB BUTT WINCH LINE IS ATTACHED TO JIB TOP WINCH LINE AND READY FOR OPERATION.
- REMOVE STOWAGE PIN (R1) AND PIVOT THE STOP ASSEMBLY (R23) TO BOOM TOP. (SEE DETAIL J). STORE STOWAGE PINS (R1) IN LUGS ON OUTER TUBE OF JIB STOP ASSEMBLY (R23). (SEE DETAIL K). ATTACH OUTER TUBE OF JIB STOP ASSEMBLY (R23) TO LUGS ON BOOM TOP WITH PIN (R4) AND COTTERS (R15). (SEE DETAIL J). REMOVE THE OFFSET PINS (R8) AND ADJUST THE POSITION OF THE INNER TUBES FOR PROPER OFFSET ALIGNMENT WITH THE LINKS. REINSTALL THE OFFSET PINS (R8) AND COTTERS (R16). (SEE DETAIL J).
- PULL HAND WINCH LINE FROM JIB TOP (ITEM 6) AND CONNECT TO WINCH LINE OF JIB BUTT (R6) WITH SHACKLE (R19). (SEE DETAIL M). USE JIB TOP HAND WINCH TO TAKE THE LOAD OFF THE (2) SAFETY PINS (R17) IN THE DISENGAGED JIB STOP PIN. (SEE DETAIL L-DISENGAGED). PAY OUT SUFFICIENT CONTROL CABLE TO ENGAGE JIB STOP PINS IN THE JIB STOP FRAME AS THE JIB POINT IS LIFTED CLEAR OF THE GROUND. (SEE DETAIL L-ENGAGED).

WARNING:
 FAILURE TO ENGAGE JIB STOP PINS MAY RESULT IN LOSS OF JIB STABILITY. STRUCTURAL DAMAGE AND/OR LOSS OF STABILITY MAY OCCUR.
 REEVE LOAD LINE THROUGH JIB STRUT WIRE ROPE GUIDE TO JIB TOP.
 RAISE BOOM UNTIL BACKSTAY AND FRONTSTAY PENDANTS ARE TIGHT.



TO DISASSEMBLE JIB

- BOOM DOWN UNTIL JIB POINT IS APPROXIMATELY 12 INCHES (305mm) FROM GROUND.
 - USING WINCH ON JIB TOP DISENGAGE JIB STOP PINS FROM FRAME AND INSTALL SAFETY PIN (R17) INTO JIB STOP PINS. (SEE DETAIL L-DISENGAGED ON SHEET 4). CAUTION: VERIFY PINS ARE FULLY DISENGAGED BEFORE LOWERING.
 - LOWER BOOM ONTO BLOCKING.
 - UNREEVE LOAD LINE.
 - DISCONNECT JIB TOP WINCH LINE SHACKLE (R19) FROM JIB BUTT WINCH LINE AND SECURE APPROPRIATELY.
 - RAISE JIB STOP ASSEMBLY (R23) AND PIN IT TO STRUT WITH STORAGE PINS (R1) AND SAFETY PINS (R16). (SEE DETAIL C ON SHEET 3).
 - USING AN ASSIST ATTACHED TO THE FRONT SIDE OF THE SHEAVES IN THE JIB STRUT (R21) DISCONNECT BACKSTAY PENDANTS (R11, ITEM 202) AND/OR LINKS (ITEMS 2 AND 200) FROM BOOM INSERT.
 - WITH JIB POINT LOWERED TO GROUND, LOWER JIB STRUT (R21) ONTO THE JIB BUTT (R6) AND DISCONNECT ASSIST.
 - DISCONNECT PENDANTS.
 - REVERSE ASSEMBLY STEPS TO DISASSEMBLE THE JIB SECTIONS.
 - THE JIB TOP (ITEM 6), JIB BUTT (R6), STRUT (R21), SPREADER (R22) AND STOP (R23) CAN BE SHIPPED AS AN ASSEMBLED UNIT. (SEE "FIXED JIB SHIPPING CONFIGURATION" ON SHEET 3).
- NOTE: PENDANT (R11) MAY SHIP AS A PART OF THIS ASSEMBLY OR IT MAY SHIP SEPARATELY.

THIS PRINT REMAINS THE PROPERTY OF METTRONIC CRANES, INC. IT IS LOANED, SUBJECT TO RETURN UPON DEMAND, AND ON EXPRESS CONDITION THAT IT IS NOT TO BE COPIED OR USED DIRECTLY OR INDIRECTLY IN ANY MANNER WITHOUT THE WRITTEN PERMISSION OF METTRONIC CRANES, INC.		TOLERANCE UNLESS OTHERWISE SPECIFIED DECIMAL PLACES FABRICATION (1) PLACE 0.5 ±.12 ±.18 (2) PLACE 0.00 ±.08 ±.12 ±.015 (3) PLACE 0.000 ±.006 ±.009 ANGLES 11.25° 30°		MATERIALS DR: RHY CK: DLG APP: JRR		Mettrocranes, Inc. Manitowoc, Wisconsin MODEL: MLC150-1 MLC250 B3		JIB RIGGING JIB NO. 134 B2		80117860 SHT 4 OF 4	
---	--	---	--	---	--	--	--	-------------------------------	--	------------------------	--