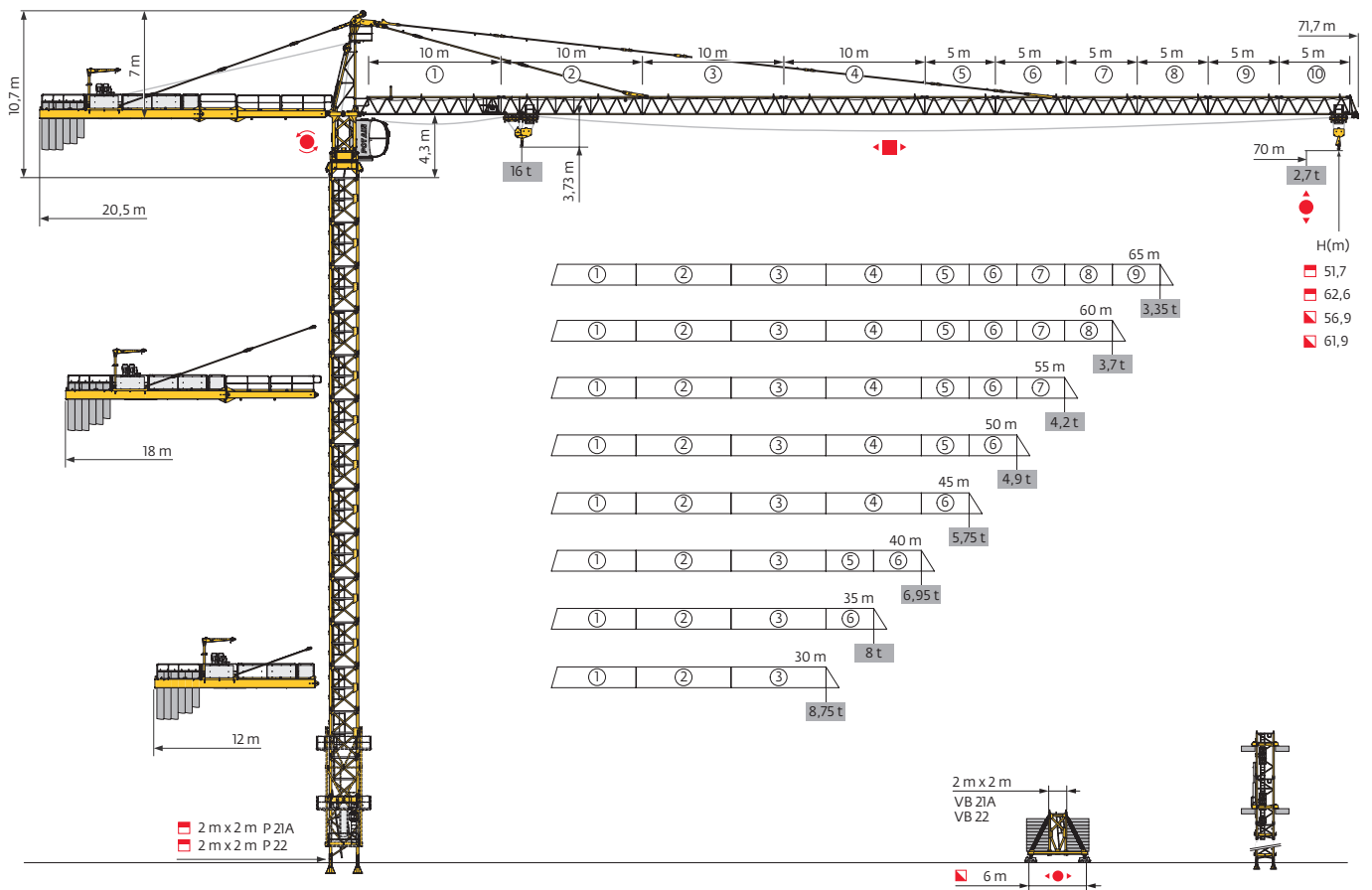


MC 系列

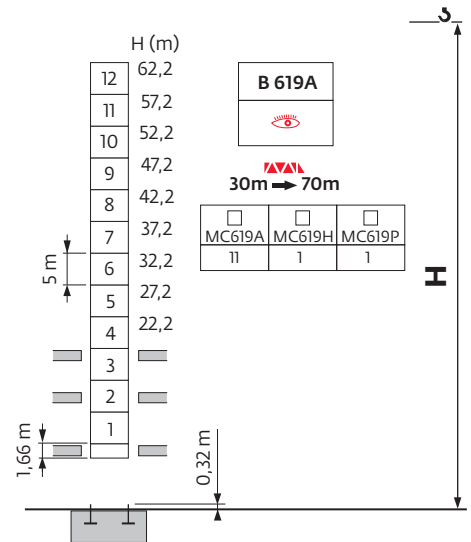
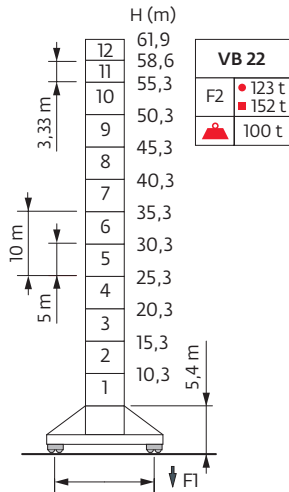
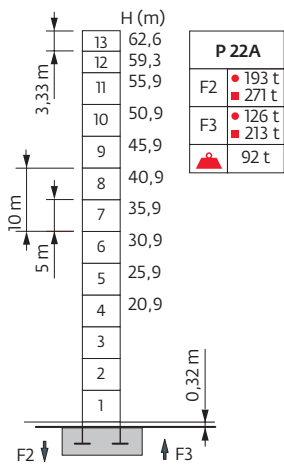
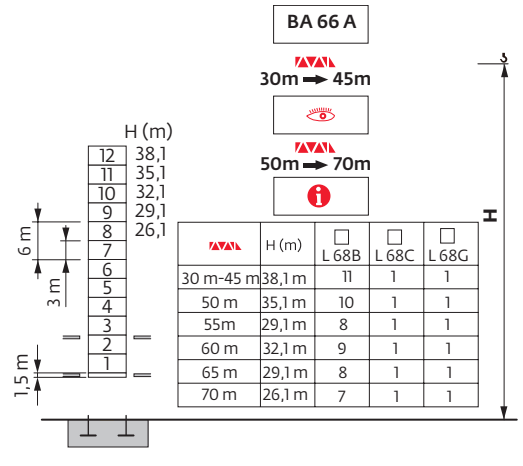
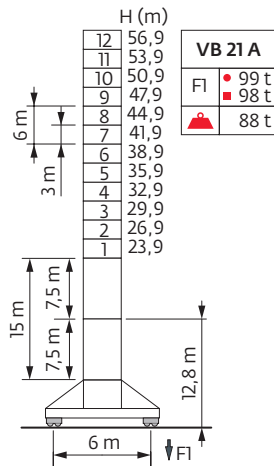
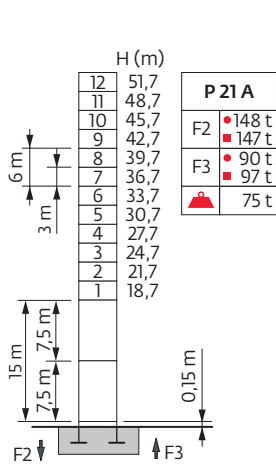
MC 320A K16



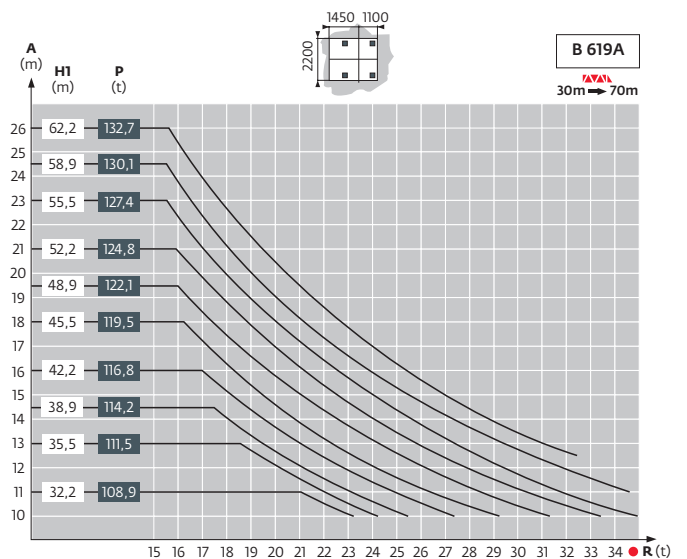
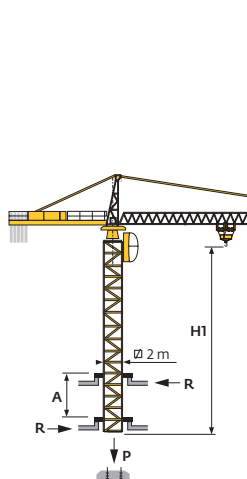
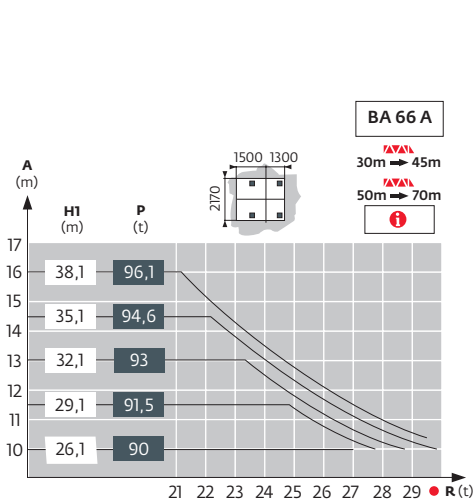
塔身组成 - 反力

□ 2 m

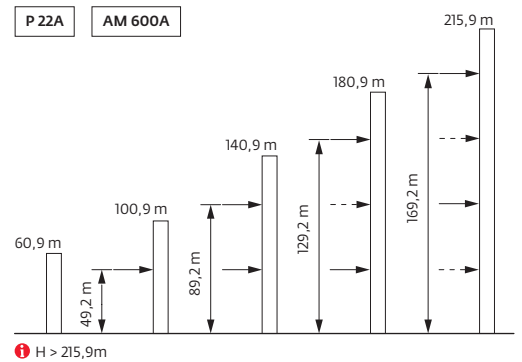
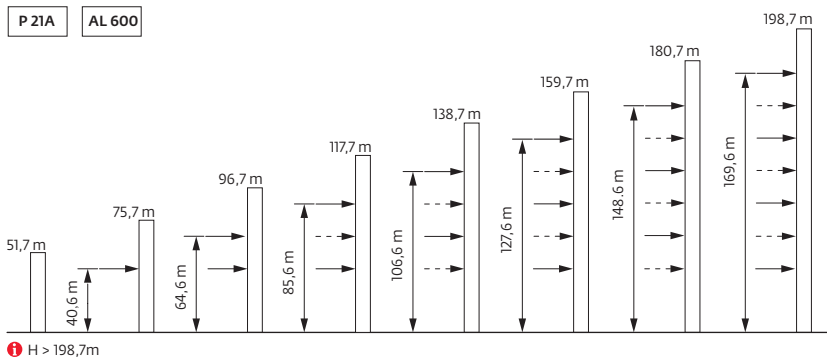
▲▲▲ 30 m → 70 m



内爬塔机



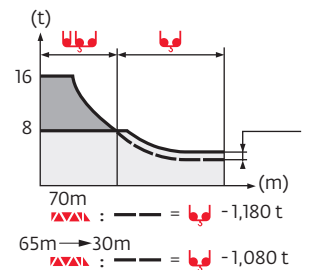
附着



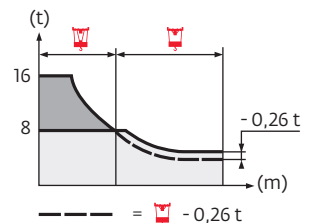
负荷曲线



70 m	3,1	▶	16,1	17	20	22	25	27	27,7	31	32	35	37	40	42	45	47	50	52	55	57	60	62	65	67	70	m
▲▲▲			16	15	12,2	10,8	9,2	8,3	8	8	7,7	6,9	6,5	5,8	5,5	5	4,7	4,4	4,1	3,8	3,7	3,4	3,2	3	2,9	2,7	t
65 m	3,1	▶		17,1	20	22	25	27	29,6	32,9	35	37	40	42	45	47	50	52	55	57	60	62	65				m
▲▲▲				16	13,2	11,7	10	9	8	8	7,4	7	6,3	6	5,5	5,2	4,8	4,5	4,2	4	3,7	3,6	3,35				t
60 m	3,1	▶		17,1	20	22	25	27	29,6	32,9	35	37	40	42	45	47	50	52	55	57	60						m
▲▲▲				16	13,2	11,7	10	9	8	8	7,4	7	6,3	6	5,5	5,2	4,8	4,5	4,2	4	3,7						t
55 m	3,1	▶		17,1	20	22	25	27	29,6	32,9	35	37	40	42	45	47	50	52	55								m
▲▲▲				16	13,2	11,7	10	9	8	8	7,4	7	6,3	6	5,5	5,2	4,8	4,5	4,2								t
50 m	3,1	▶		17,4	20	22	25	27	30,2	33,6	35	37	40	42	45	47	50										m
▲▲▲				16	13,5	12	10,2	9,3	8	8	7,6	7,1	6,5	6,1	5,6	5,3	4,9										t
45 m	3,1	▶		17,8	20	22	25	27	30,8	34,3	35	37	40	42	45												m
▲▲▲				16	13,8	12,3	10,5	9,5	8	8	7,8	7,3	6,7	6,3	5,75												t
40 m	3,1	▶		18,4	20	22	25	27	30	32	35,6	37	40														m
▲▲▲				16	14,5	12,9	11	10	8,7	8	7,6	6,95															t
35 m	3,1	▶		18,4	20	22	25	27	30	32	35																m
▲▲▲				16	14,5	12,9	11	10	8,7	8																	t
30 m	3,1	▶		18,6	20	22	25	27	29	30																	m
▲▲▲				16	14,6	13	11,1	10	9,15	8,75																	t



70 m	2,1	▶	16,4	17	20	22	25	27	28,5	29,2	32	35	37	40	42	45	47	50	52	55	57	60	62	65	67	70	m
▲▲▲			16	15,3	12,6	11,2	9,5	8,6	8	8	7,1	6,3	5,8	5,2	4,9	4,4	4,1	3,8	3,5	3,2	3	2,8	2,65	2,4	2,3	2,1	t
65 m	2,1	▶		17,5	20	22	25	27	30,5	31,2	35	37	40	42	45	47	50	52	55	57	60	62	65				m
▲▲▲				16	13,6	12,1	10,3	9,4	8	8	6,9	6,4	5,8	5,4	4,9	4,6	4,2	4	3,6	3,4	3,2	3	2,75				t
60 m	2,1	▶		17,4	20	22	25	27	30,4	31,2	35	37	40	42	45	47	50	52	55	57	60						m
▲▲▲				16	13,5	12,0	10,3	9,3	8	8	6,9	6,4	5,8	5,4	4,9	4,6	4,2	4	3,7	3,5	3,2						t
55 m	2,1	▶		17,5	20	22	25	27	30,6	31,4	35	37	40	42	45	47	50	52	55								m
▲▲▲				16	13,6	12,1	10,3	9,4	8	8	7	6,5	5,8	5,5	5	4,7	4,3	4	3,7								t
50 m	2,1	▶		17,8	20	22	25	27	31,2	32	35	37	40	42	45	47	50										m
▲▲▲				16	14	12,4	10,6	9,6	8	8	7,1	6,6	6	5,6	5,1	4,8	4,4										t
45 m	2,1	▶		18,2	20	22	25	27	31,9	32,7	35	37	40	42	45												m
▲▲▲				16	14,3	12,7	10,9	9,9	8	8	7,3	6,8	6,2	5,8	5,25												t
40 m	2,1	▶		18,8	20	22	25	27	30	33	33,8	37	40														m
▲▲▲				16	14,9	13,3	11,4	10,3	9	8	7,1	6,45															t
35 m	2,1	▶		18,5	20	22	25	27	32,4	33,3	35																m
▲▲▲				16	14,6	13	11,1	10,1	8	8	7,5																t
30 m	2,1	▶		18,5	20	22	25	27	29	30																	m
▲▲▲				16	14,6	13	11,1	10,1	9,2	8,8																	t



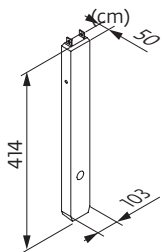
压重

2 m	VB 21 A	H (m)	56,9	53,9	50,9	47,9	44,9	41,9	38,9	35,9	32,9	29,9	26,9	23,9
	◀●▶	▲ (t)	84	72	72	72	72	72	72	60	60	60	60	60
	VB 22	H (m)	61,9	58,6	55,3	50,3	45,3	40,3	35,3	30,3	25,3	20,3	15,3	10,3
	◀●▶	▲ (t)	132	108	96	72	72	72	72	72	72	72	72	72

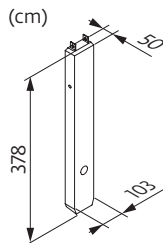
起重臂重量&平衡臂配重

吊钩	▲ (kg) (+/- 5%)			100 LVF / 75 LVF						
	吊钩	平衡臂	起重臂	4200 kg	700 kg	▲ (kg)	4600 kg	4200 kg	2300 kg	▲ (kg)
70 m	12445	12040	13280	5	4	24162	2	3	1	24100
65 m	12160	11755	12955	5	2	22762	3	1	2	22600
60 m	11765	11360	12600	5	0	21362	1	3	2	21800
55 m	11215	10810	12050	5	4	24162	2	3	1	24100
50 m	10480	10075	11315	5	1	22062	3	2	0	22200
45 m	9730	9325	10565	4	2	18562	3	0	2	18400
40 m	9085	8680	9920	3	4	15762	2	1	1	15700
35 m	8335	7930	9170	3	1	13662	2	0	2	13800
30 m	7535	7130	8370	4	5	20662	3	1	1	20300

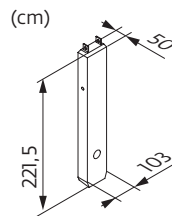
CU - 4600 kg



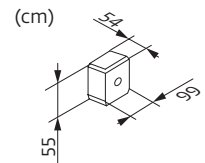
CA - 4200 kg



CS - 2300 kg


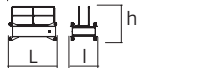

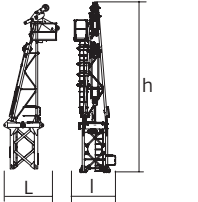
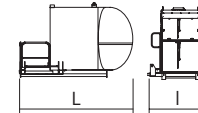
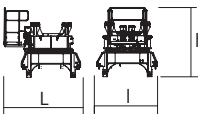
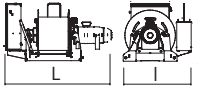
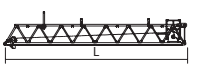
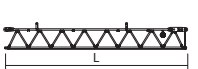

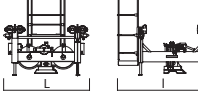
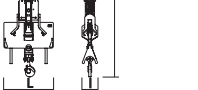


CB - 700 kg



尺寸重量表

塔机回转部分 :  70 m -  100 LVF

塔机回转部分		L (m)	l (m)	h (m)	kg (+/- 5%)	
平衡臂		6,39	1,5	1,86	1565	
		2,7	1,52	1,93	985	
		11,1	2,09	2	4190	
塔帽		3,42	2,3	9,55	5530	
驾驶室	 V140S 太空舱	3,4	1,9	2,57	1130	
回转机构	 RVF 162	3,12	2,5	2,75	5805	
起升机构		75 LVF	2,48	1,62	1,4	3780
		100 LVF	3,15	1,46	1,9	2835
起重臂根部节	 ① 6DVF6	10,17	1,9	2,09	2660	
起重臂节		②	10,17	1,38	1,45	1790
		③	10,14	1,38	1,45	1665
		④	10,27	1,38	1,18	1395
起重臂节		⑤	5,27	1,38	1,3	750
		⑥	5,14	1,38	1,19	800
		⑦	5,13	1,38	1,19	735
		⑧	5,2	1,38	1,2	550
		⑨	5,16	1,38	1,11	395
		⑩	5,2	1,38	1,2	285
小车	 16t	2,2	2,3	2,1	630	
吊钩	 16t	1,5	0,5	2,3	790	

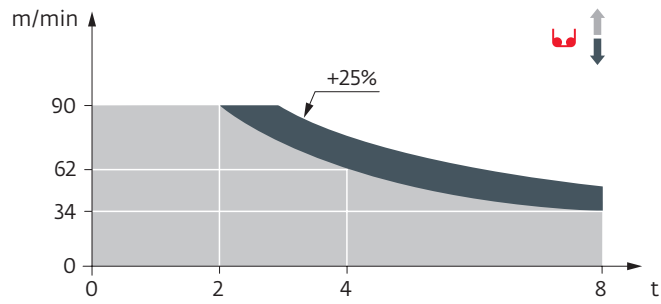
塔机回转部分			L (m)	l (m)	h (m)	kg (+/- 5%)
后小车		16t	2,1	1,7	1,07	450
前小车		16t	4,03	1,7	1,07	935
		8t	2,02	1,7	1,07	485
吊钩		16t	1,85	0,28	2,09	870
		8t	1,19	0,28	2,45	530
顶升装置						
顶升套架		P 21A	7,26	3,78	3,98	5195
		P 22A	11,5	4,21	4,36	8235
塔身节						
S 68J SR 68J			7,74	2,1	2,1	4170
			7,74	2,1	2,1	5175
L68B3			3,26	2,12	2,12	1530
M619 A		□ 2 m	5,32	2,13	2,13	3517
		A	-	-	-	47
		B	-	-	-	55
		C	-	-	-	122
		D	-	-	-	165
		E	-	-	-	148
M619 C		□ 2 m	3,66	2,13	2,13	2492
		A	-	-	-	29
		B	-	-	-	41
		C	-	-	-	98
		D	-	-	-	140
		E	-	-	-	138
塔机底座						
固定支脚		P 21A	1,31	0,8	0,8	500
		R 21A	0,8	0,6	0,6	200
		P 22A	1,35	0,65	0,65	390
		R 22A	0,82	0,65	0,65	325
行走基节		VB 21 A	5,01	2,41	2,41	4390
		VB 22	5,01	2,41	2,41	4720
斜撑		VB 21 A	4,51	0,29	0,29	420
		VB 22	4,51	0,29	0,29	420
底架		VB 21 A	6,7	0,7	2,31	1600
		VB 22	6,7	0,7	2,31	1600

机构

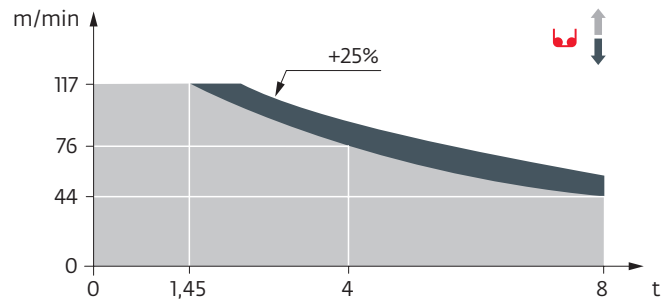
380 V - 50 Hz											hp	kW	
	75 LVF 40 Optima	m/min	34	44	62	90	17	22	31	45	75	55	637 m
		t	8	6	4	2	16	12	8	4			
	100 LVF 40 Optima	m/min	44	56	76	117	22	28	38	58,5	100	75	1136 m
		t	8	6	4	1,45	16	12	8	2,9			
	6 DVF 6	m/min	0 → 42 (16 t) → 84 (8 t) → 100 (4 t)							5,5	4		
	RVF 162 Optima+	tr/min U/min rpm	0 → 0,7							2 x 7,5	2 x 5,5		
	VB 21A VB 22 RT 544 A1 - 2V R ≥ 13 m	m/min	13,5 → 27							4 x 7	4 x 5,2		

















CEI 38	IEC 38		kVA
380 V (+10% -10%) 50 Hz		100 LVF : 98 kVA 75 LVF : 78 kVA	


75 LVF 40 Optima

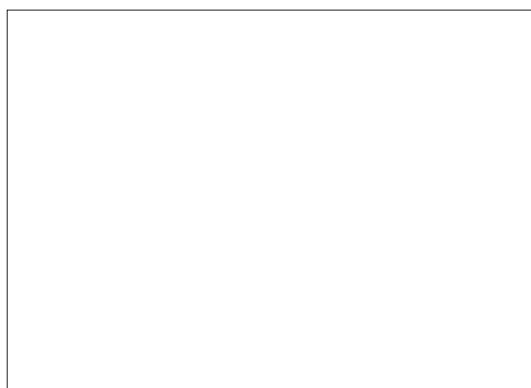


100 LVF 40 Optima



-  上绕度
-  工作状态下的反力
-  非工作状态下的反力
-  起重机在无载荷、无配重、独立高度状态下的压重
-  总配重
-  13, 4m卡车
-  40³立方集装箱
-  坚固的附着框
-  松开的附着框
-  起升
-  变幅
-  回转
-  行走
-  额定功率
-  参阅内爬
-  联系我们

 此商业文件不承担法律责任，对于任何技术信息，请查阅相应说明书。



马尼托瓦克起重设备（中国）有限公司

工厂地址：江苏省张家港市经济开发区（南）区金塘路55号
 市场总部：上海市漕溪北路333号中金国际广场B座1103-1105室
 总机：021-6457 0066
 传真：021-6457 4985
 邮编：200030