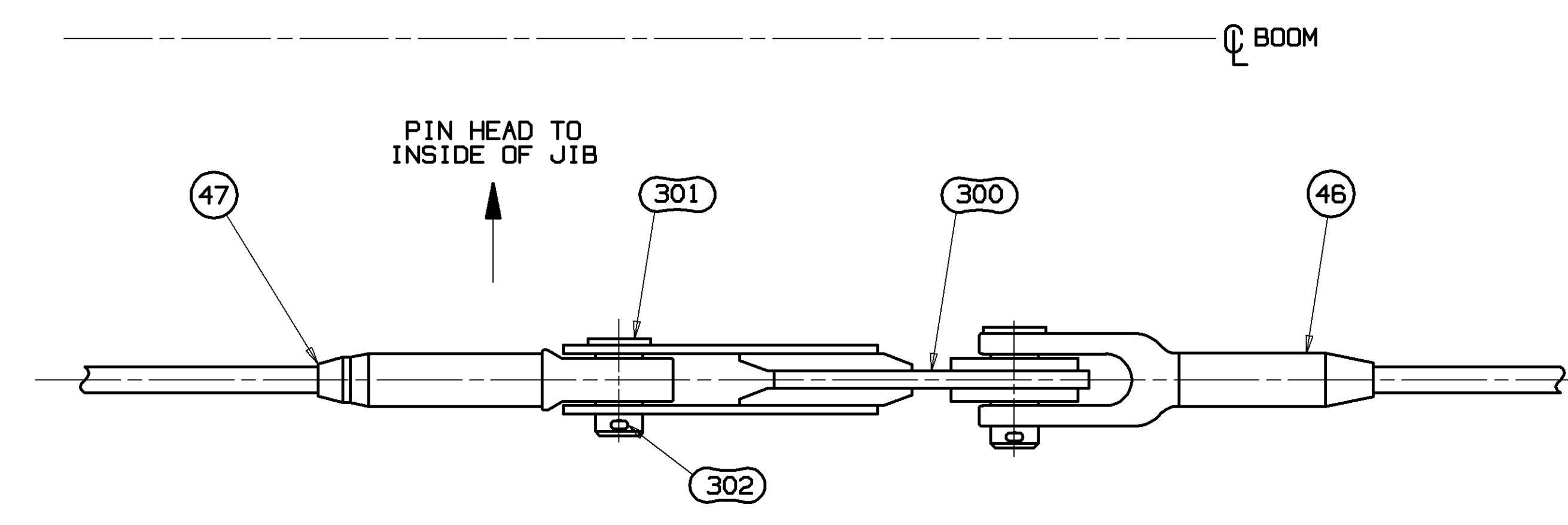
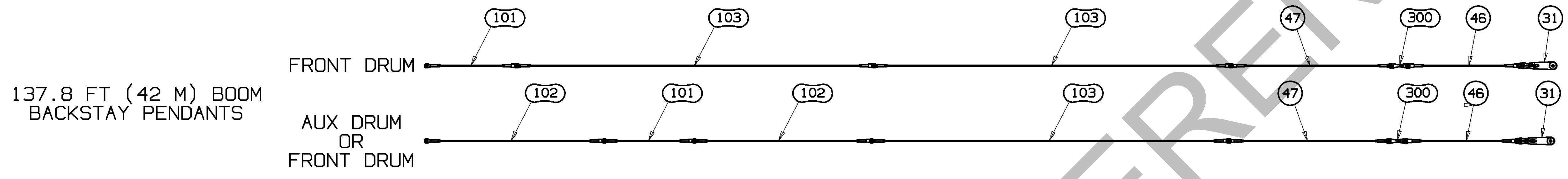
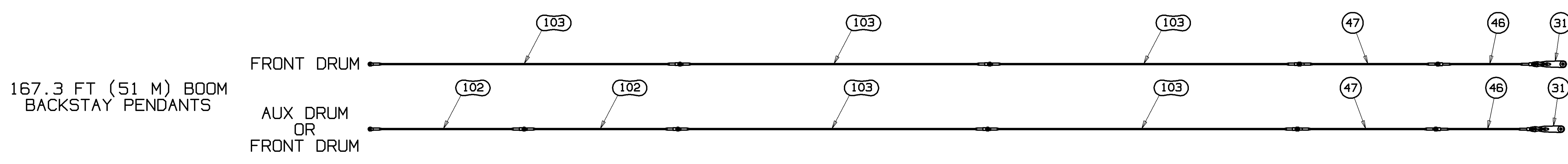
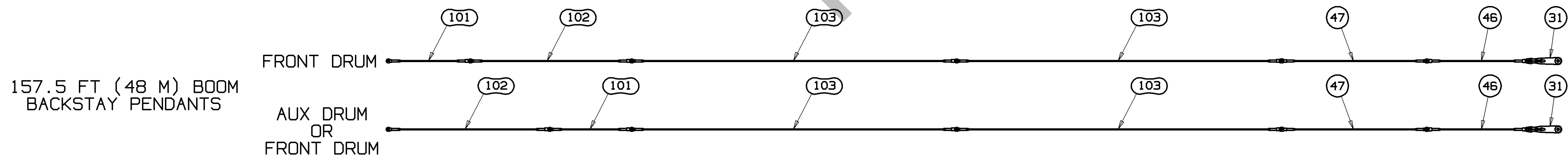
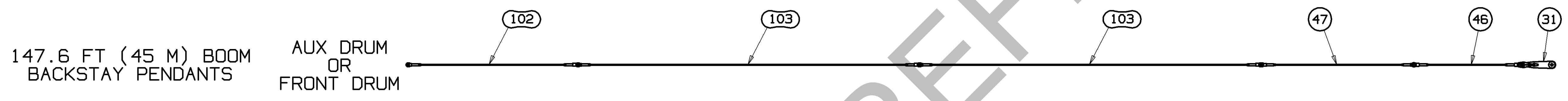


VIEW C-C
SCALE: 1.80=1FT
TYPICAL FOR 68.9 FT.
THRU 88.6 FT. BOOM LENGTHS



VIEW D-D
SCALE: 1.80=1FT
TYPICAL FOR 98.4 FT.
THRU 137.8 FT. BOOM LENGTHS

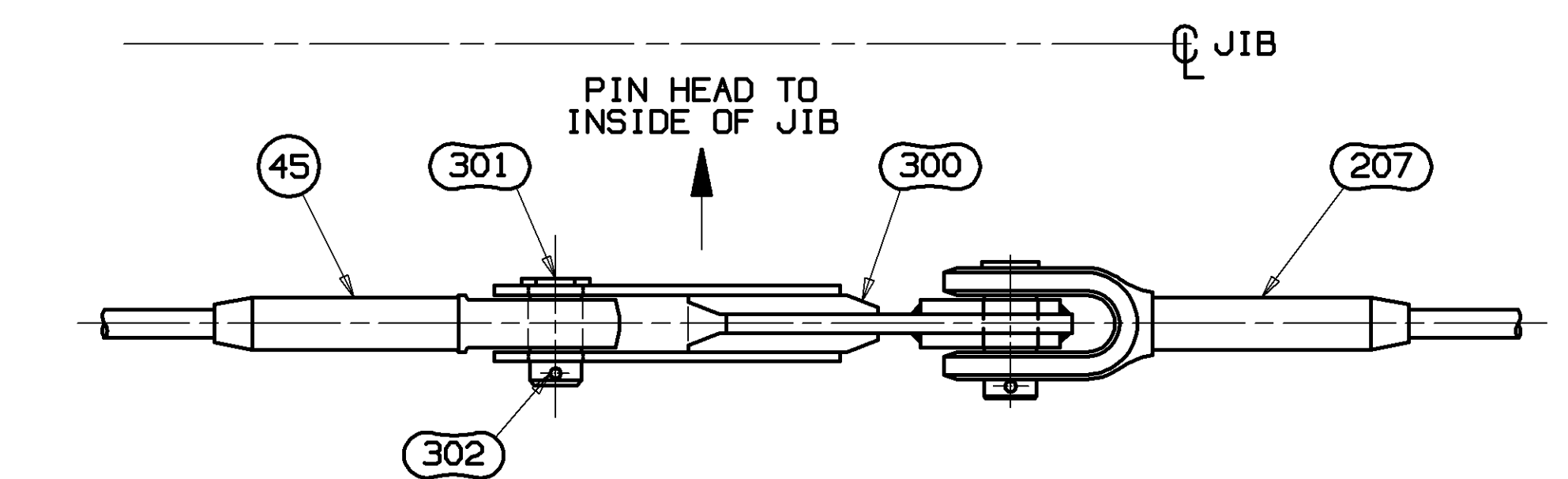
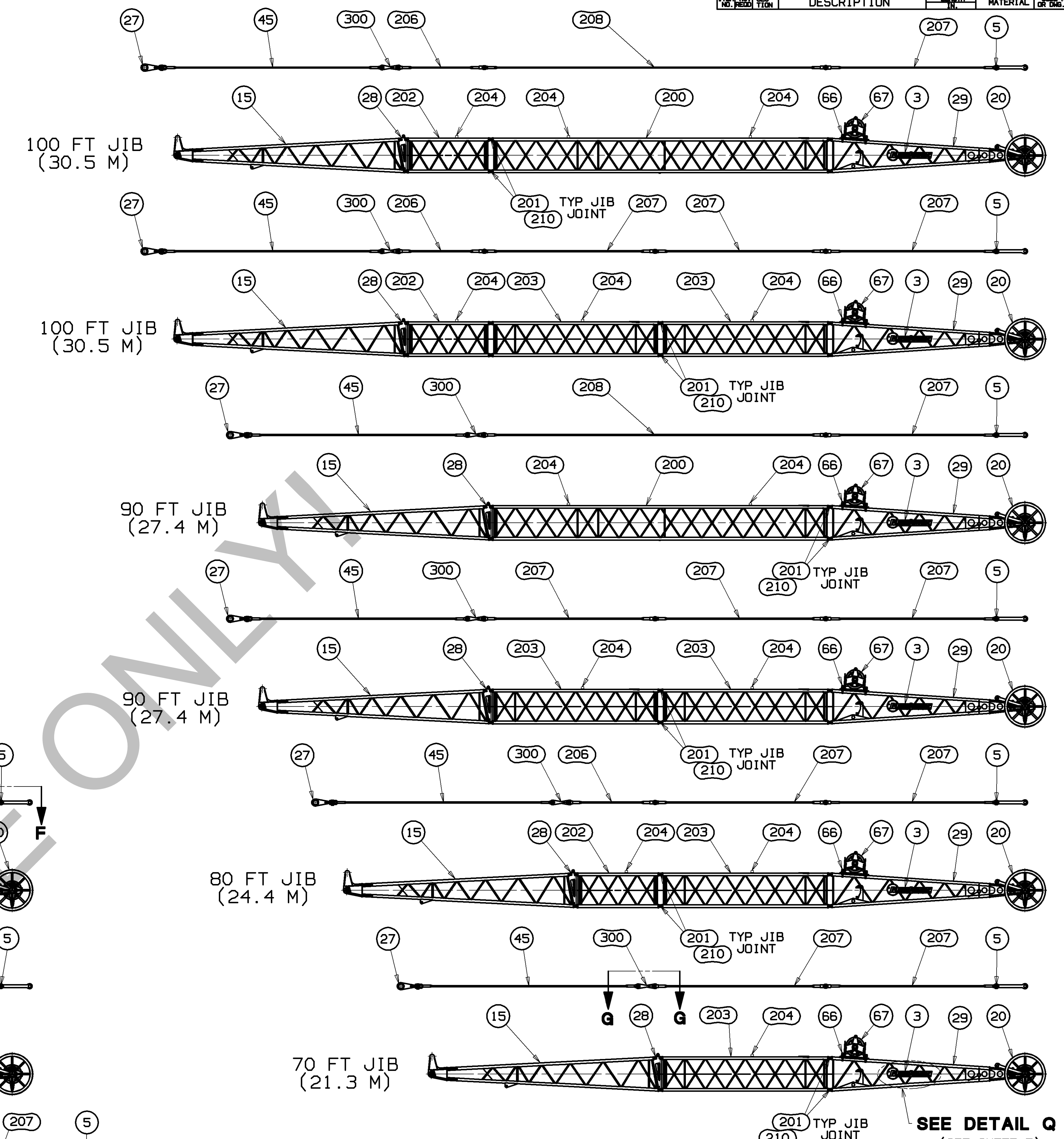
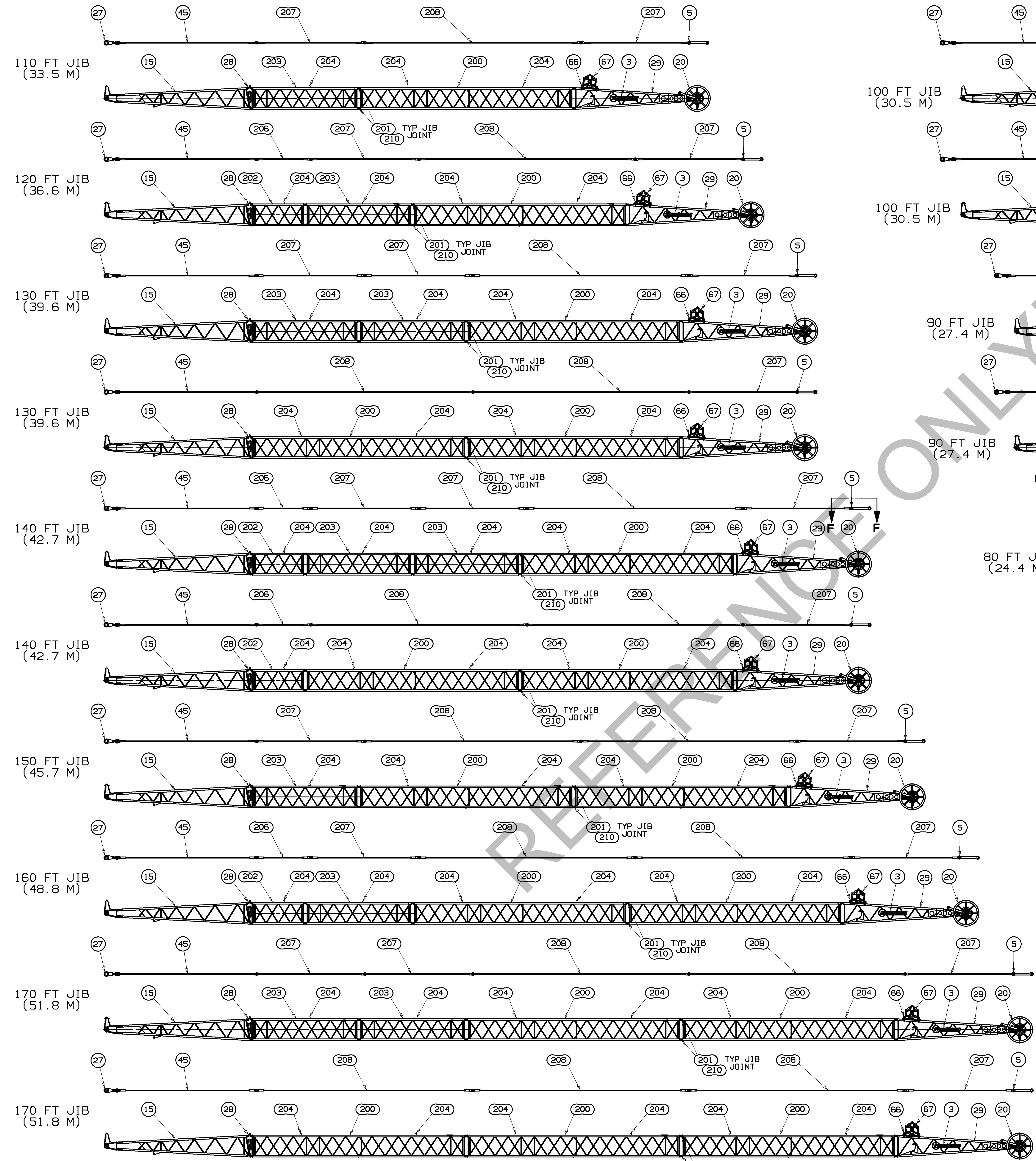


REFERENCE ONLY!

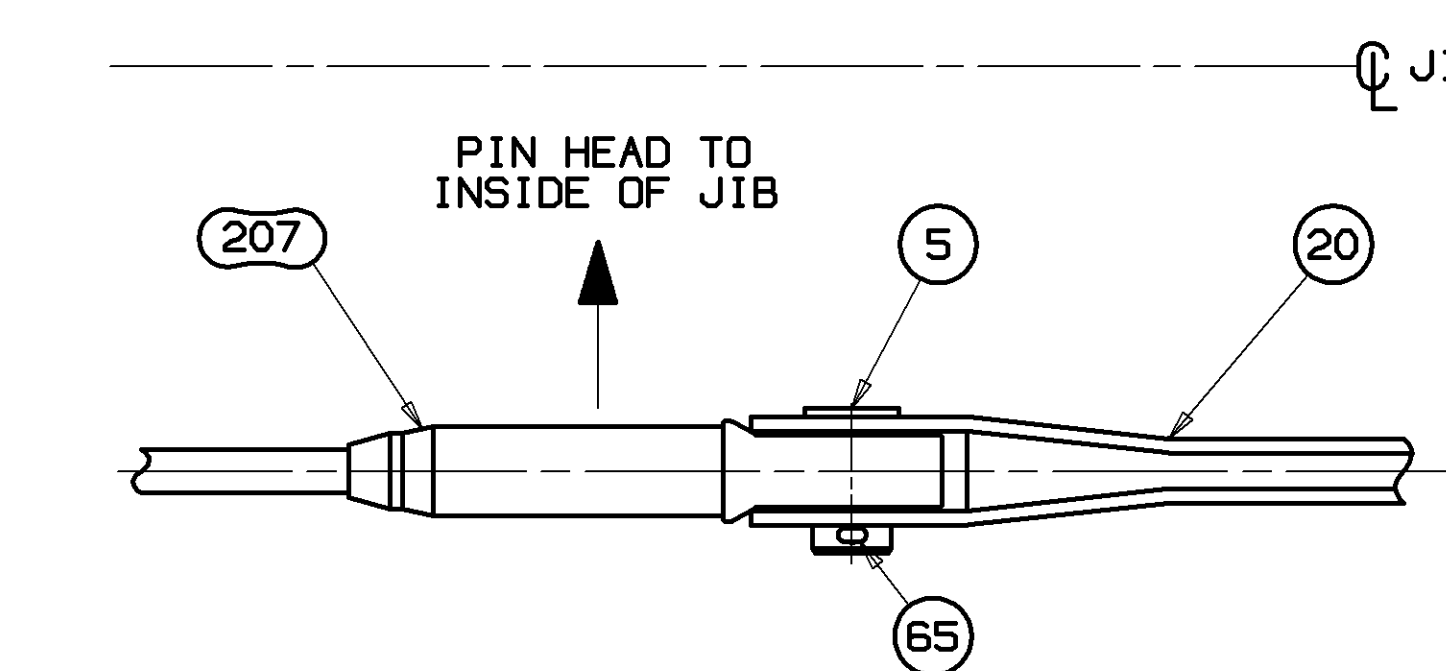
SUPERSEDES 81022481 SHEET 2 OF 01-18-13

<small>THIS PRINT REMAINS THE PROPERTY OF MARITOWOOD CRANES, INC. ALL INFORMATION CONTAINED HEREIN IS CONFIDENTIAL. IT IS LOANED, SUBJECT TO RETURN UPON DEMAND, AND ON EXPRESS CONDITION THAT IT IS NOT TO BE COPIED OR USED DIRECTLY OR INDIRECTLY IN ANY MANNER DETRIMENTAL TO OUR INTERESTS.</small>	<small>TOLERANCE UNLESS OTHERWISE SPECIFIED</small>		<small>DATE: 06-24-14 REV. LTK (FC)</small>	
	<small>DECIMAL PLACES</small> (1) PLACE 0.5 ±.12 ±.18 ±.03 (2) PLACE 0.00 ±.06 ±.12 ±.015 (3) PLACE 0.000 ±.006 ±.008 ±.002	<small>FABRICATION</small> ±.10 FEET ±.0 FEET ±.0 FEET		<small>MACHINING</small> ±.005 ±.005 ±.005
	<small>ANGLES</small> ±1.5° ±1.5° ±1.5°	<small>WELDING</small> ±.005 ±.005 ±.005		<small>WELDING</small> ±.005 ±.005 ±.005
DR: CDC CK: NRW APP: JAS	Maritowood Cranes, Inc. Maritowood, Wisconsin MODEL: MLC165	JIB LUFFING ASSY #135 FOR #74 BOOM	81022481	

BILL OF MATERIAL		ASSEMBLIES USED IN
QTY	DESCRIPTION	MATERIAL
207		5



VIEW G-G
SCALE: 1.50=1FT
TYPICAL FOR 70 FT.
THRU 100 FT. JIB LENGTHS



VIEW F-F
SCALE: 1.80=1FT

SEE DETAIL Q
(SEE SHEET 5)

SUPERSEDES 81022481 SHEET 3 OF 01-18-13

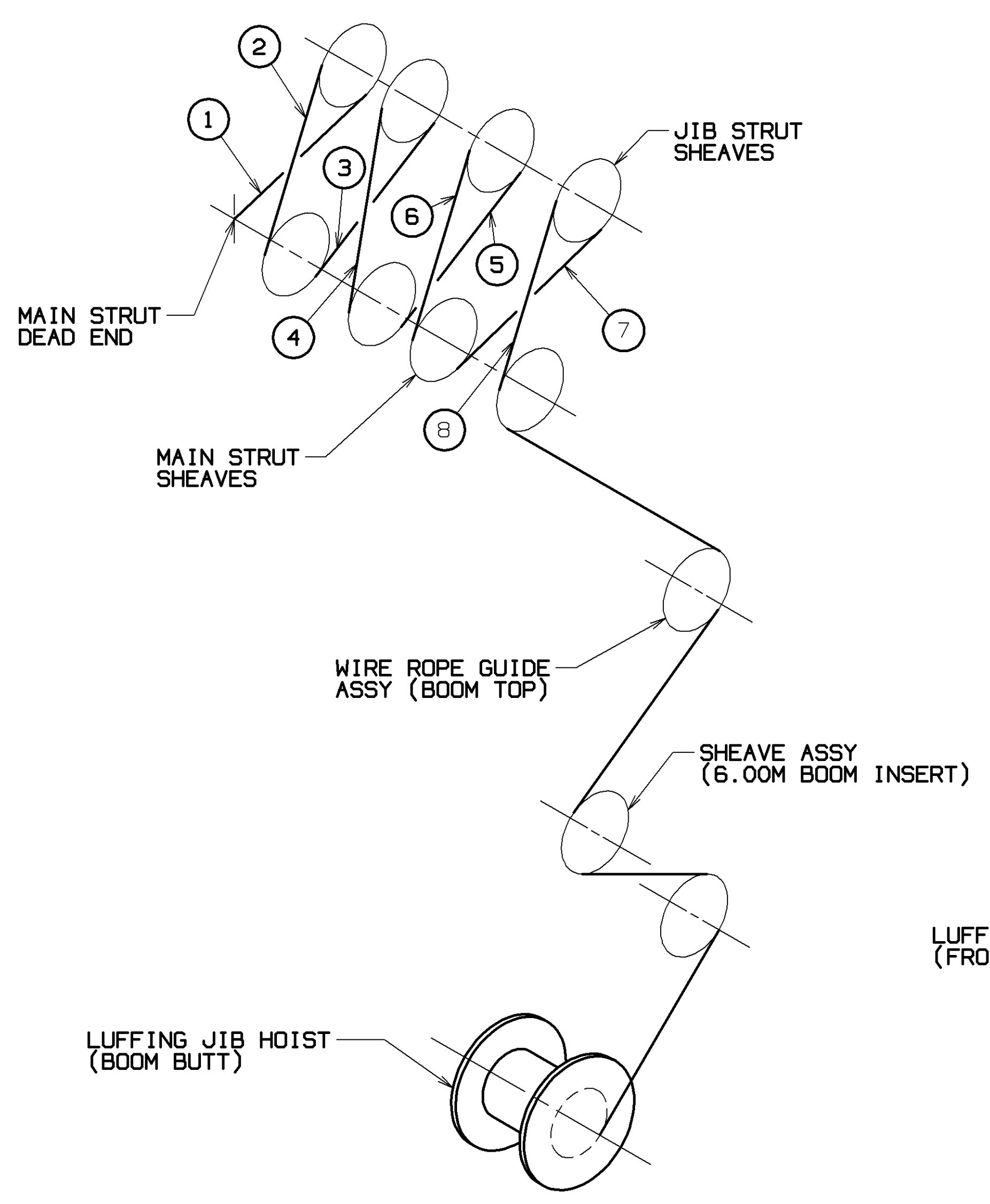
TOLERANCE UNLESS OTHERWISE SPECIFIED		FINISHING		MATERIAL	
DECIMAL PLACES	FRACTIONS	F. 10 FEET	I. 10 FEET	DR. CDC	Marinette, Wisconsin
(1) PLACE 0.5	1/16	±.12	±.18	DR. NRW	MODEL MLC165
(2) PLACE 0.00	1/32	±.08	±.12	APP. JAS	
(3) PLACE 0.000	1/64	±.015	±.025		
ANGLES		±.006	±.008		

PRIVATE LABELING
REQUIREMENT TO
CONFORM TO
SPECIFICATION
8629103794 FOR
COMPONENTS LISTED
IN SECTION 06-056

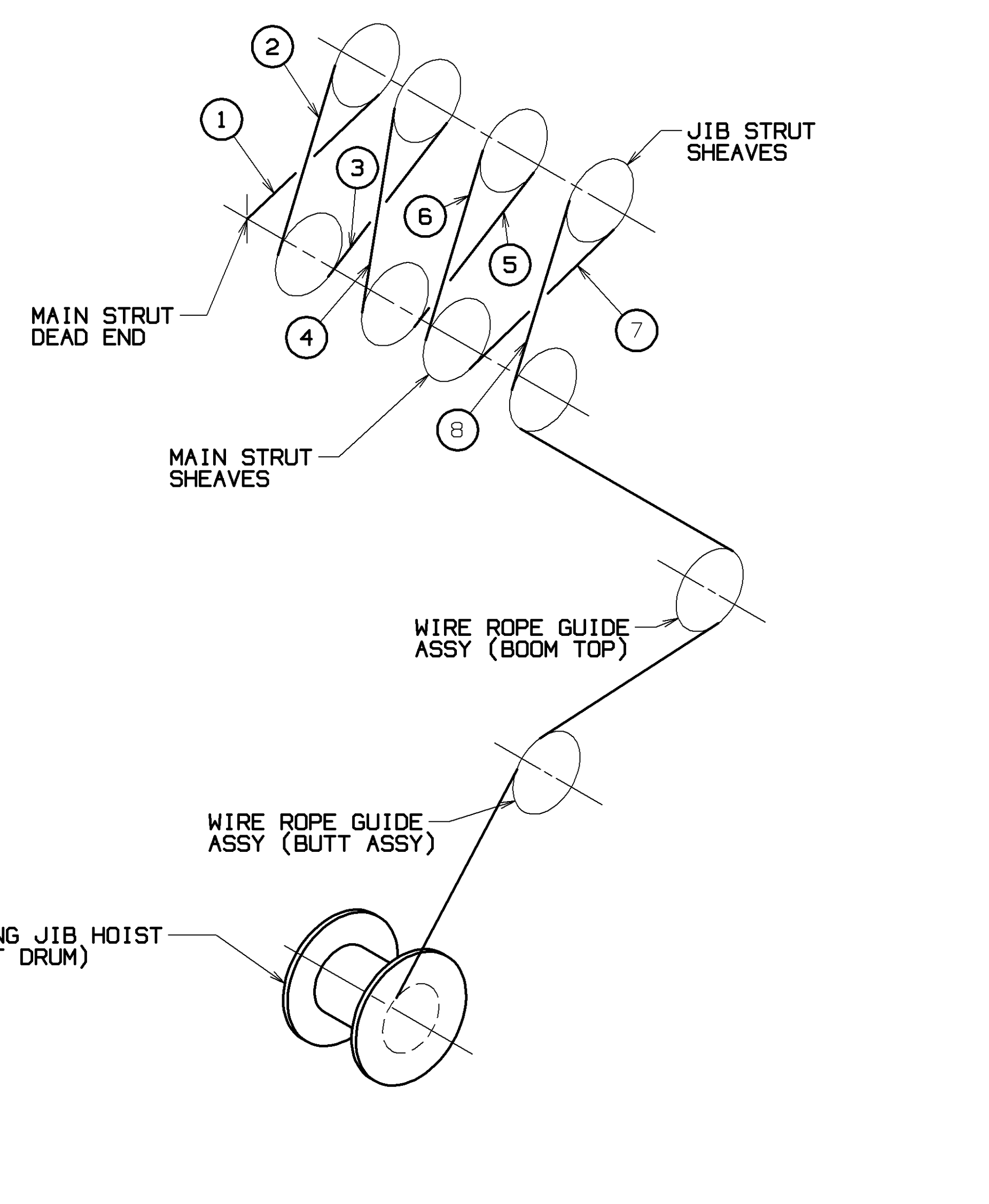
DATE: 06-24-14
REV: LK
FC

81022481
SHT 3 OF 6

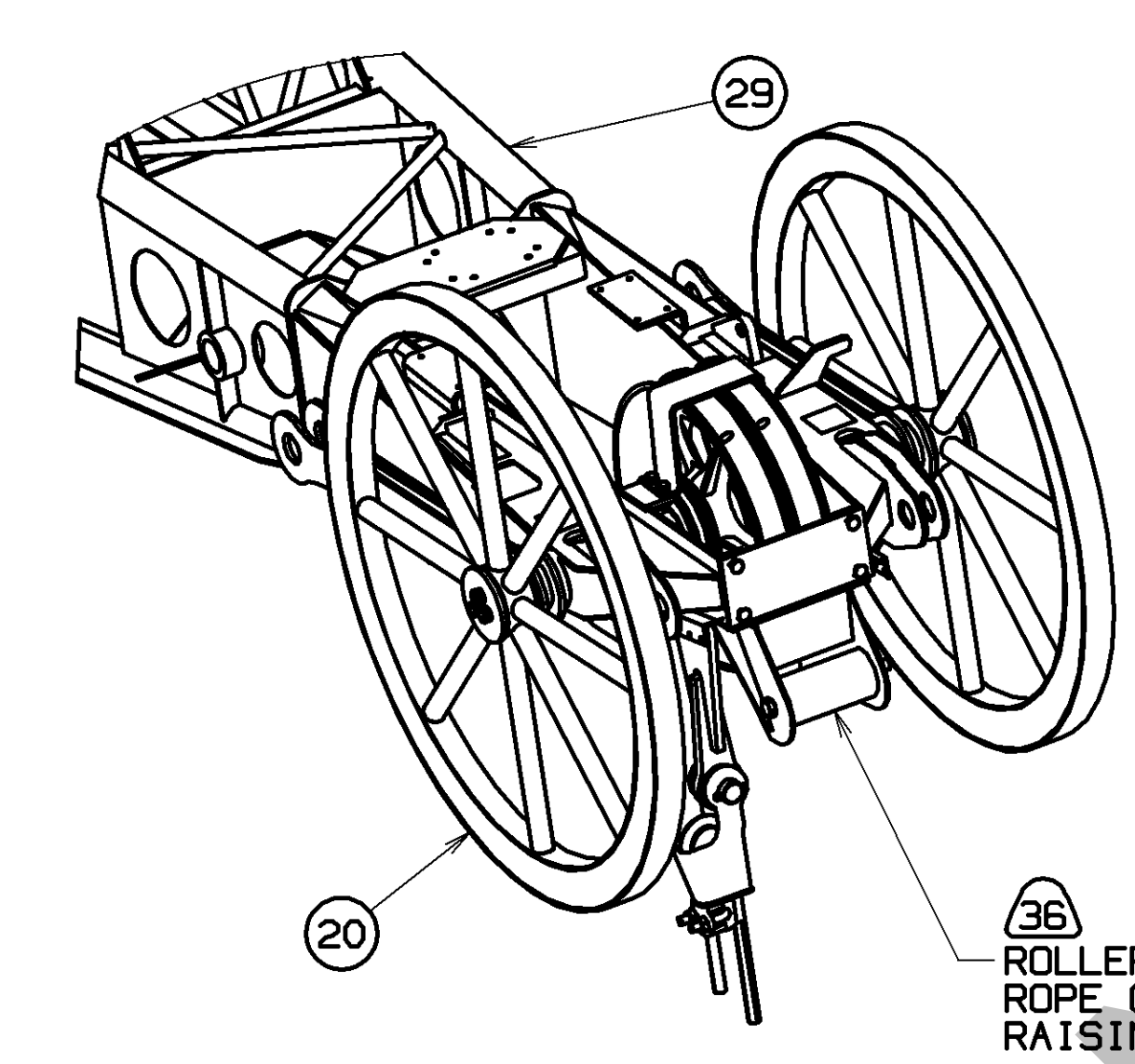
BILL OF MATERIAL				ASSEMBLIES USED ON
QTY	PKG	DESCRIPTION	MATERIAL	QTY



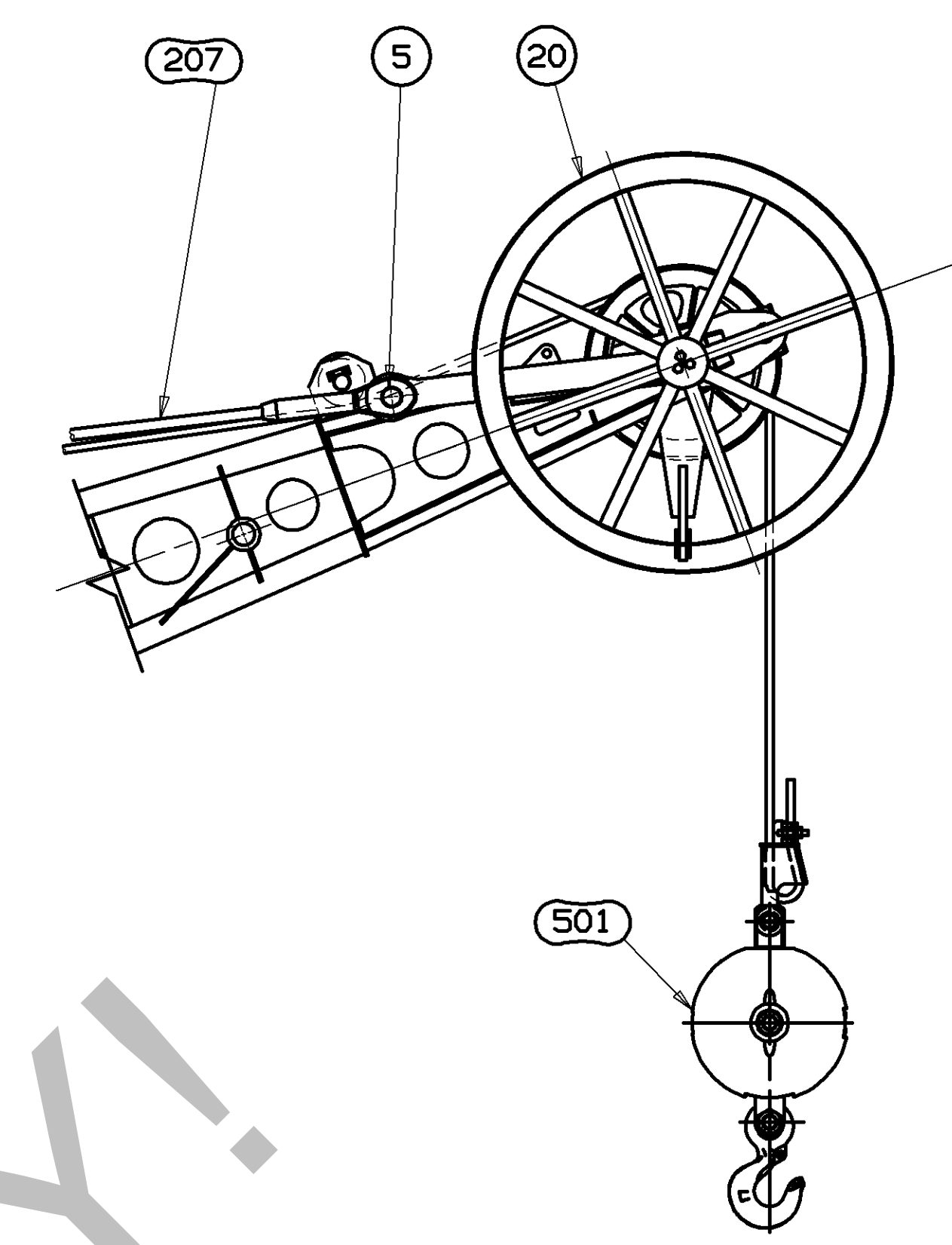
LUFFING JIB HOIST REEVING DIAGRAM FOR 8 PART LINE - SEE (33) (34) AND (35) WHEN AUX. DRUM USED



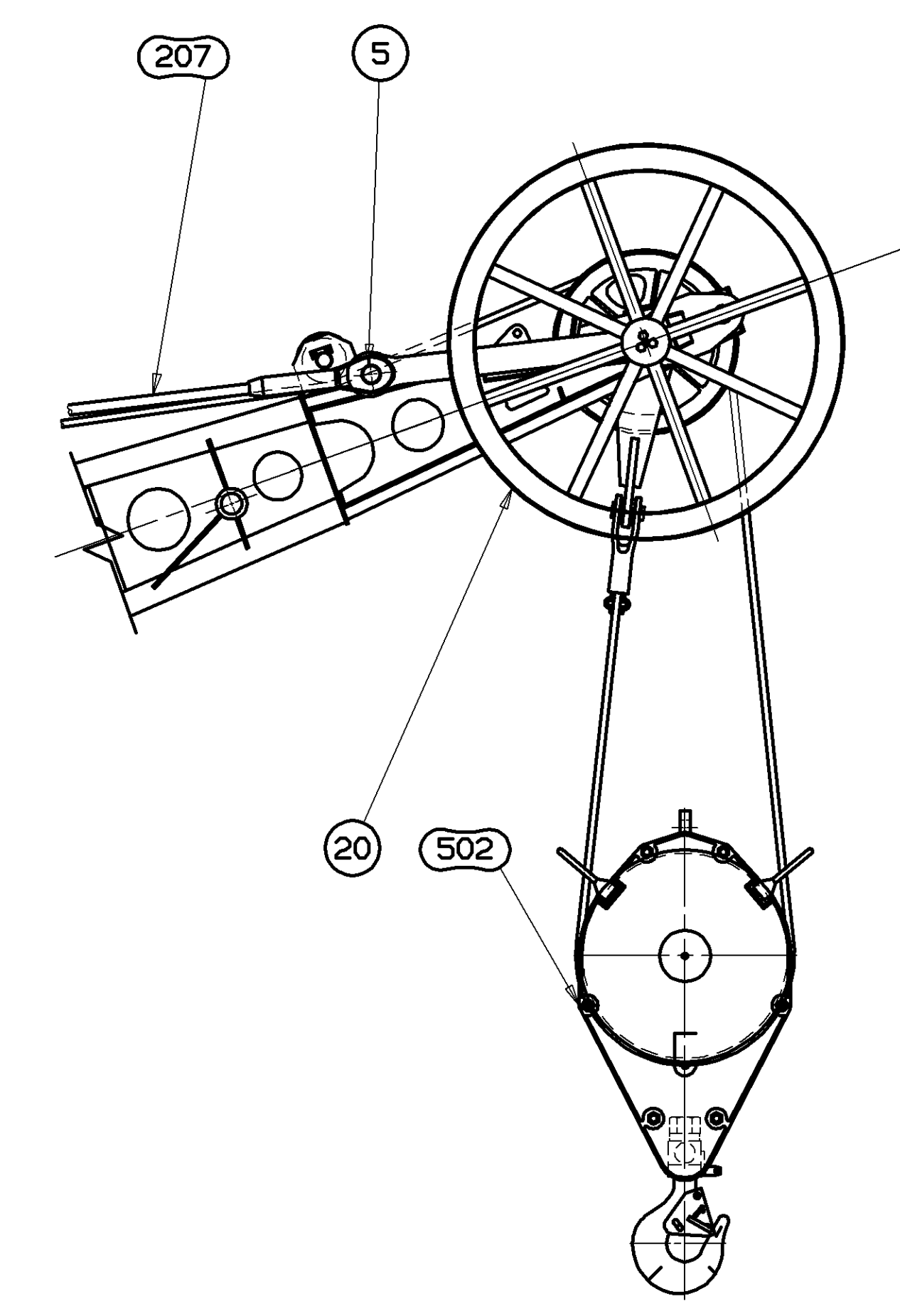
LUFFING JIB HOIST REEVING DIAGRAM FOR 8 PART LINE - SEE (33) (34) AND (35) WHEN FRONT DRUM USED



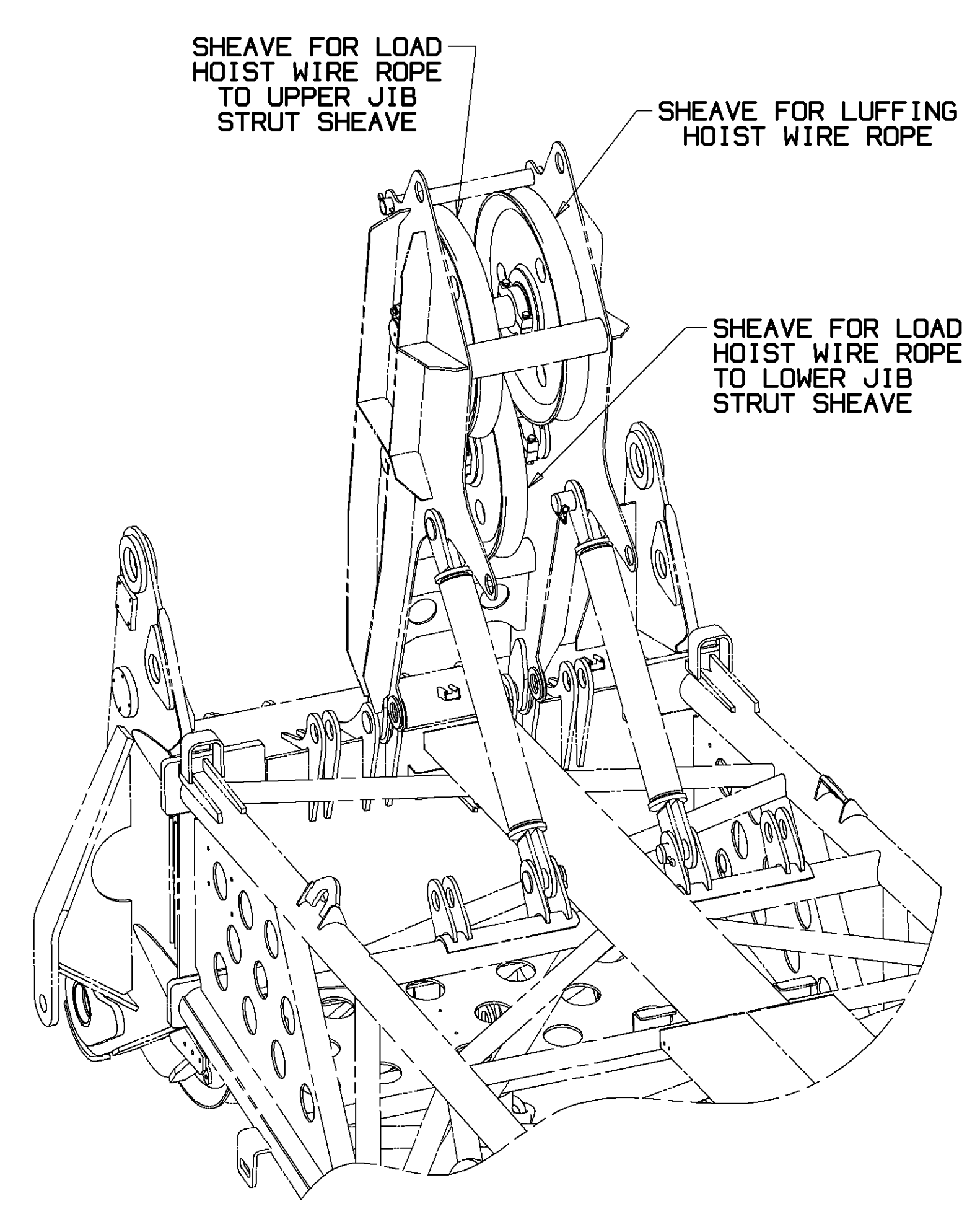
VIEW AA-AA (FROM SHEET 1) SCALE: 0.75=1FT FB2



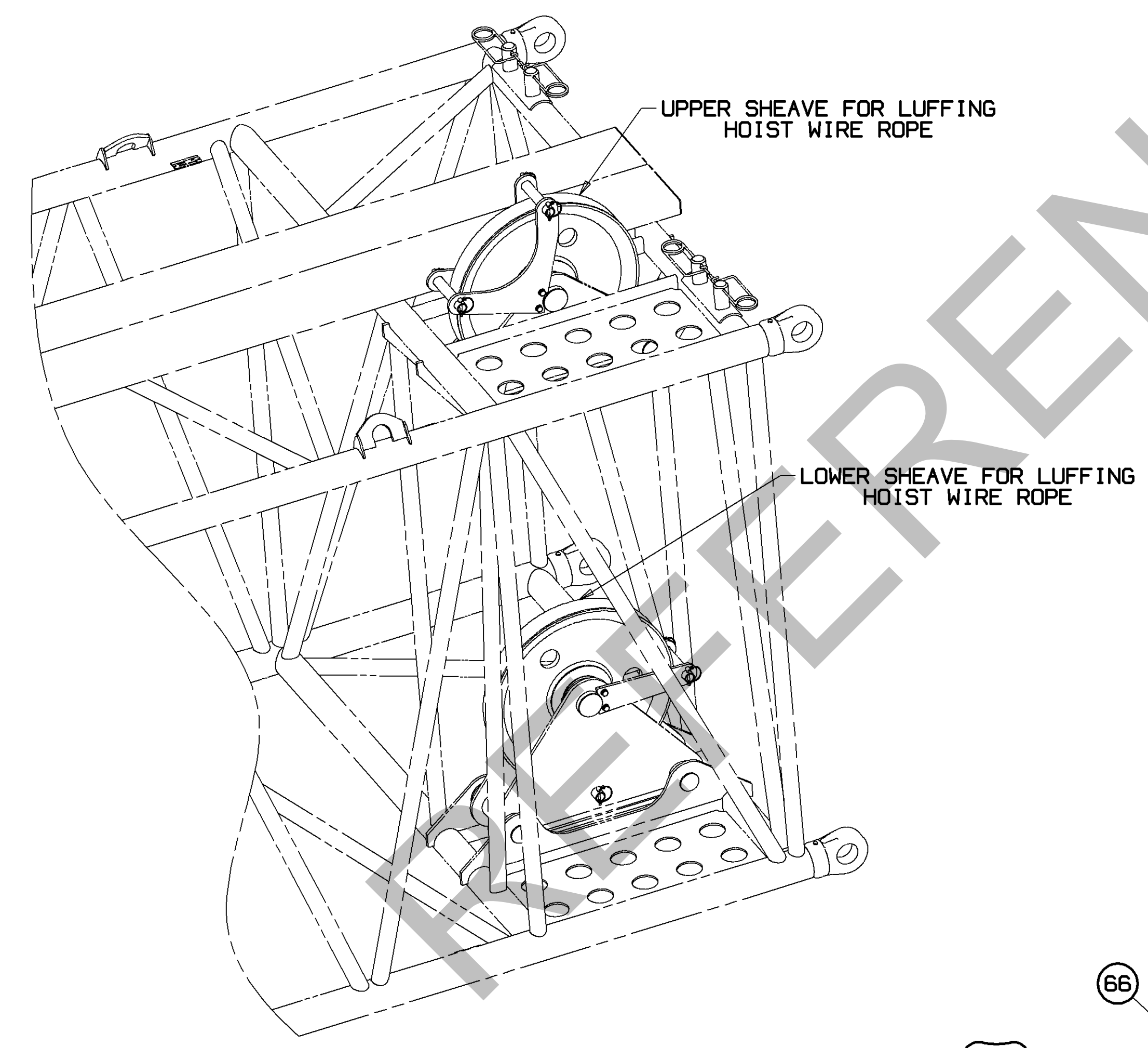
DETAIL R (FROM SHEET 1) SCALE: 0.60=1FT SINGLE PART LINE



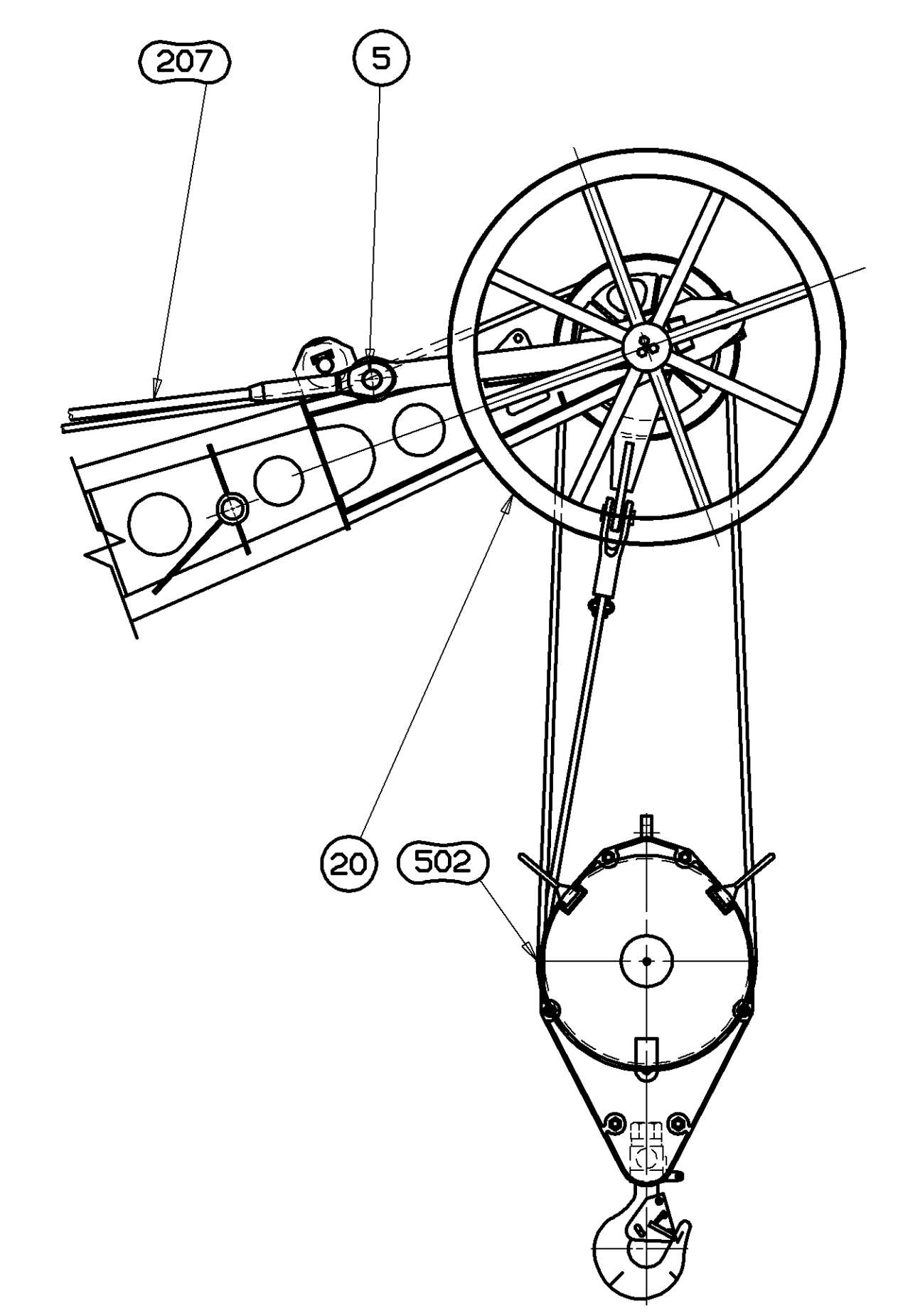
DETAIL R (FROM SHEET 1) SCALE: 0.60=1FT TWO PART LINE W/DEAD END AT CENTER SHAFT



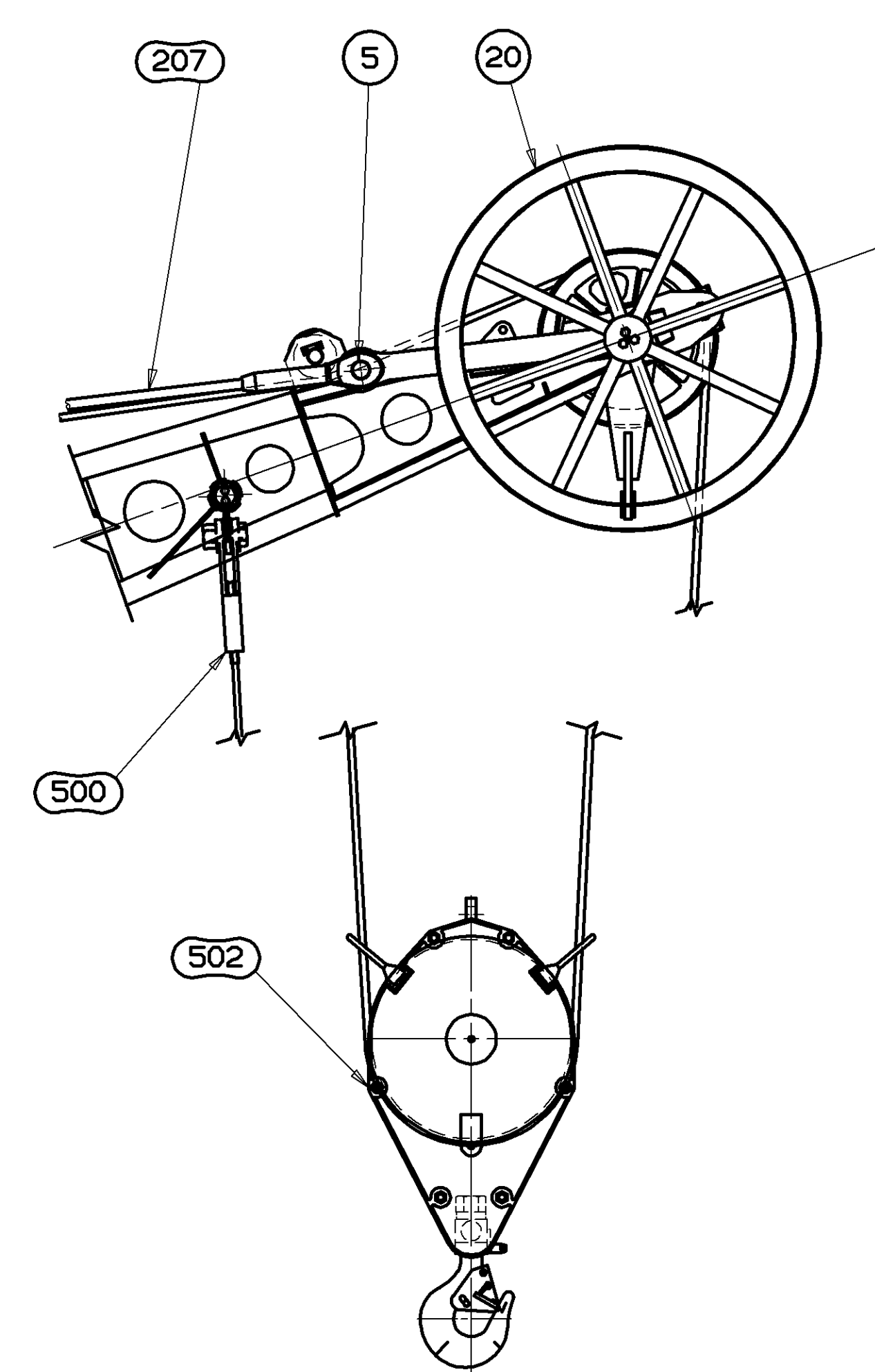
GUIDE WIRE ROPE ASSY (BOOM TOP) SCALE: 1.00=1FT



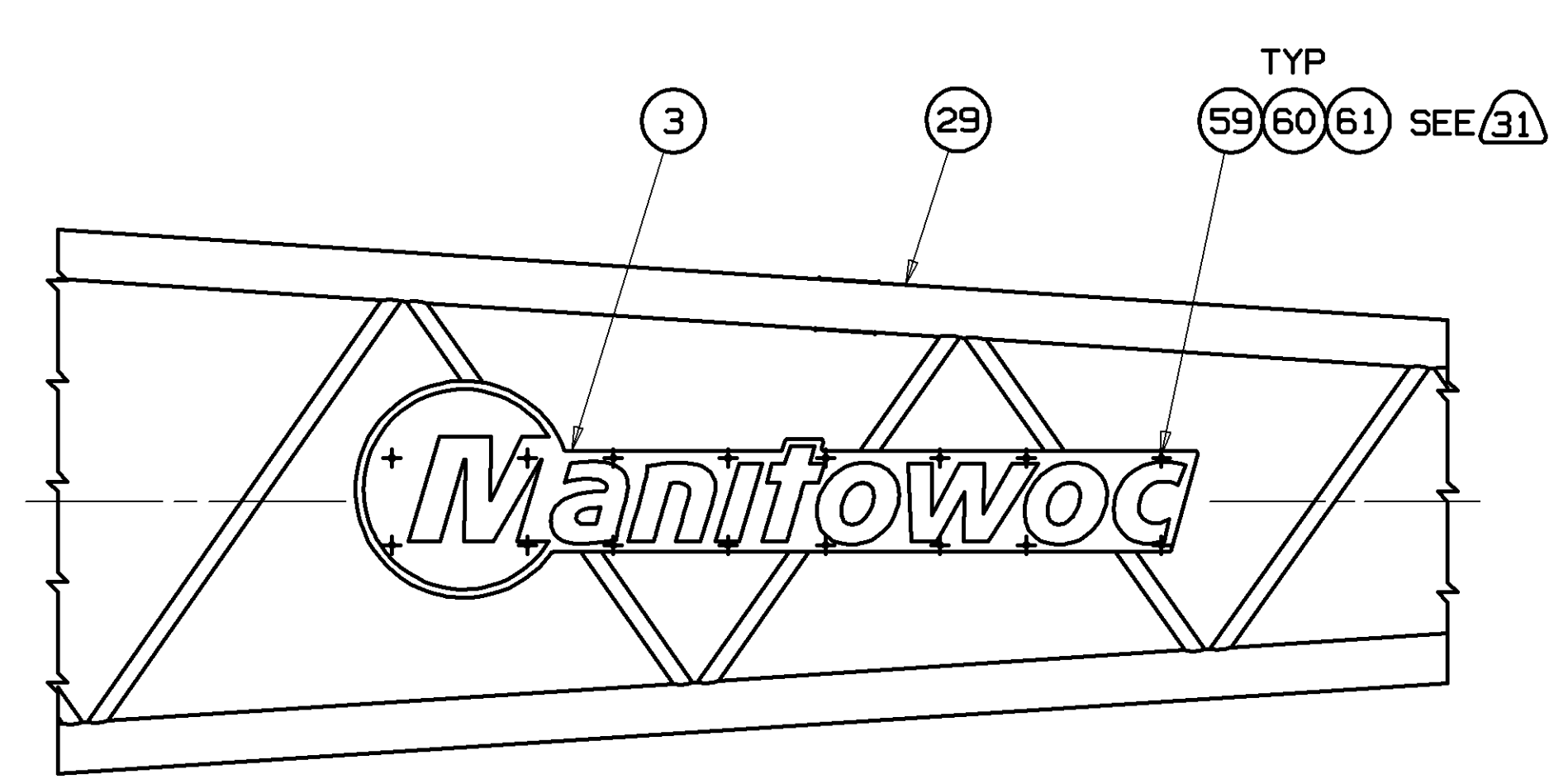
SHEAVE ASSY (6.0 M BOOM INSERT W/SHEAVES) SCALE: 1.00=1FT



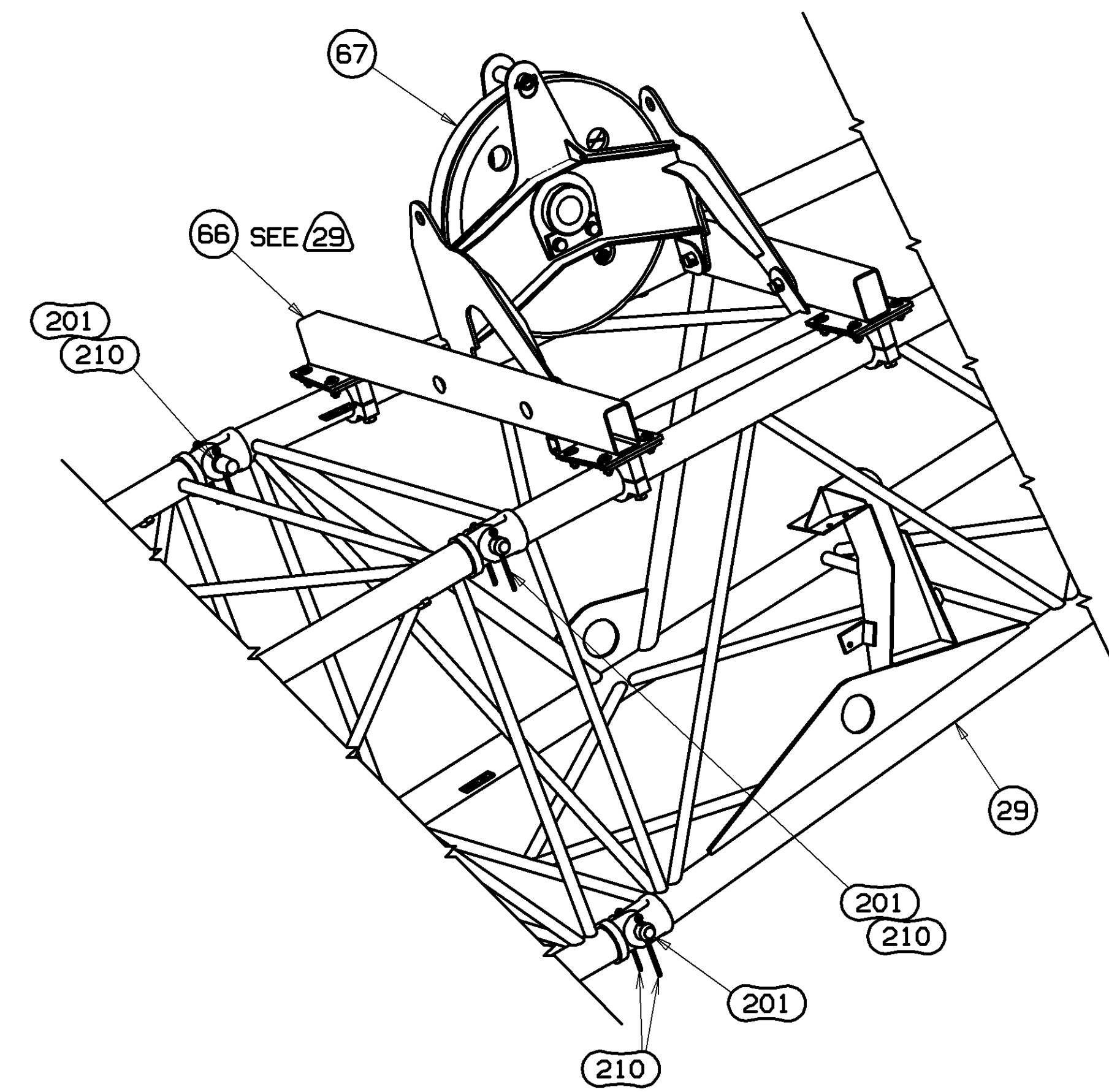
DETAIL R (FROM SHEET 1) SCALE: 0.60=1FT FOUR PART LINE W/DEAD END AT CENTER SHAFT



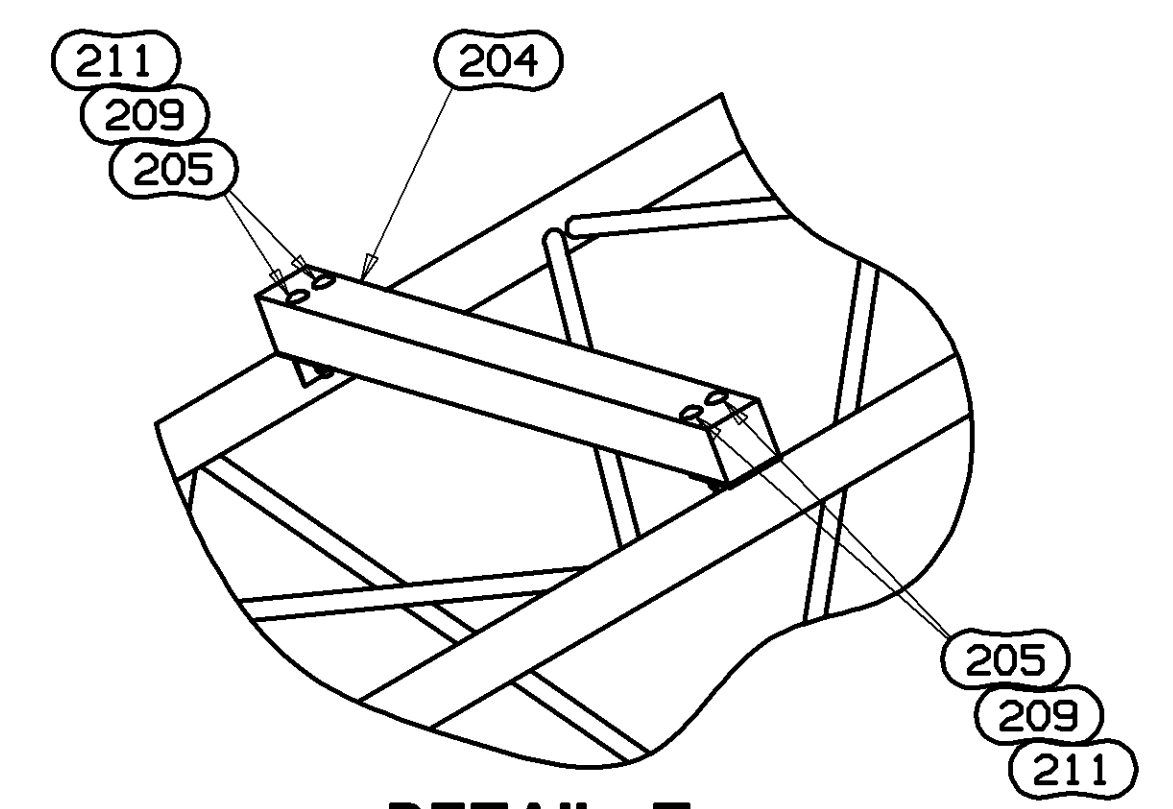
DETAIL R (FROM SHEET 1) SCALE: 0.60=1FT TWO PART LINE W/DEAD END AT ANCHOR JOINT



DETAIL Q (FROM SHEET 3) SCALE: 1.00=1FT



DETAIL S (FROM SHEET 1) SCALE: 1.00=1FT



DETAIL T TYPICAL TIMBER ATTACHMENT (FROM SHEET 1) SCALE: 0.60=1FT

SUPERSEDES 81022481 SHEETS 5 & 6 OF 03-07-13

TOLERANCE UNLESS OTHERWISE SPECIFIED		DATE	BY
DECIMAL PLACES	FRACTION	06-14-14	FC
(1) PLACE 0.5	1/16		
(2) PLACE 0.00	1/32		
(3) PLACE 0.000	1/64		
ANGLES	11.25		
MATERIAL		DR. CDC	Manitowoc Cranes, Inc.
FINISHING		DR. NRW	Model MLC165
MACHINING		APP. JAS	#135 FOR #74 BOOM

PRIVATE LABELING REQUIREMENT TO CONFORM TO ENGINEERING SPECIFICATION 8829103794 FOR COMPONENTS LISTED IN SECTION 05-026

LAYOUT JACK-KNIFE LUFFING JIB RAISING PROCEDURE

(SEE LUFFING JIB RAISING PROCEDURE 9304A)

NOTE: AFTER LUFFING JIB REEVING IS COMPLETE, BUT BEFORE RAISING BOOM AND LUFFING JIB, LOCATE STRUT ITEM 35 (177634) IN STORAGE POSITION. (SEE DETAIL E).

DISCONNECT JIB STRUT ITEM 19 (177443) FROM ADAPTER FRAME ITEM 28 (177493) BY REMOVING PIN ITEM 2 (14902) (SEE DETAIL E) AND LOCATING PIN IN STORAGE POSITION (SEE SHEET 4 DETAIL B).

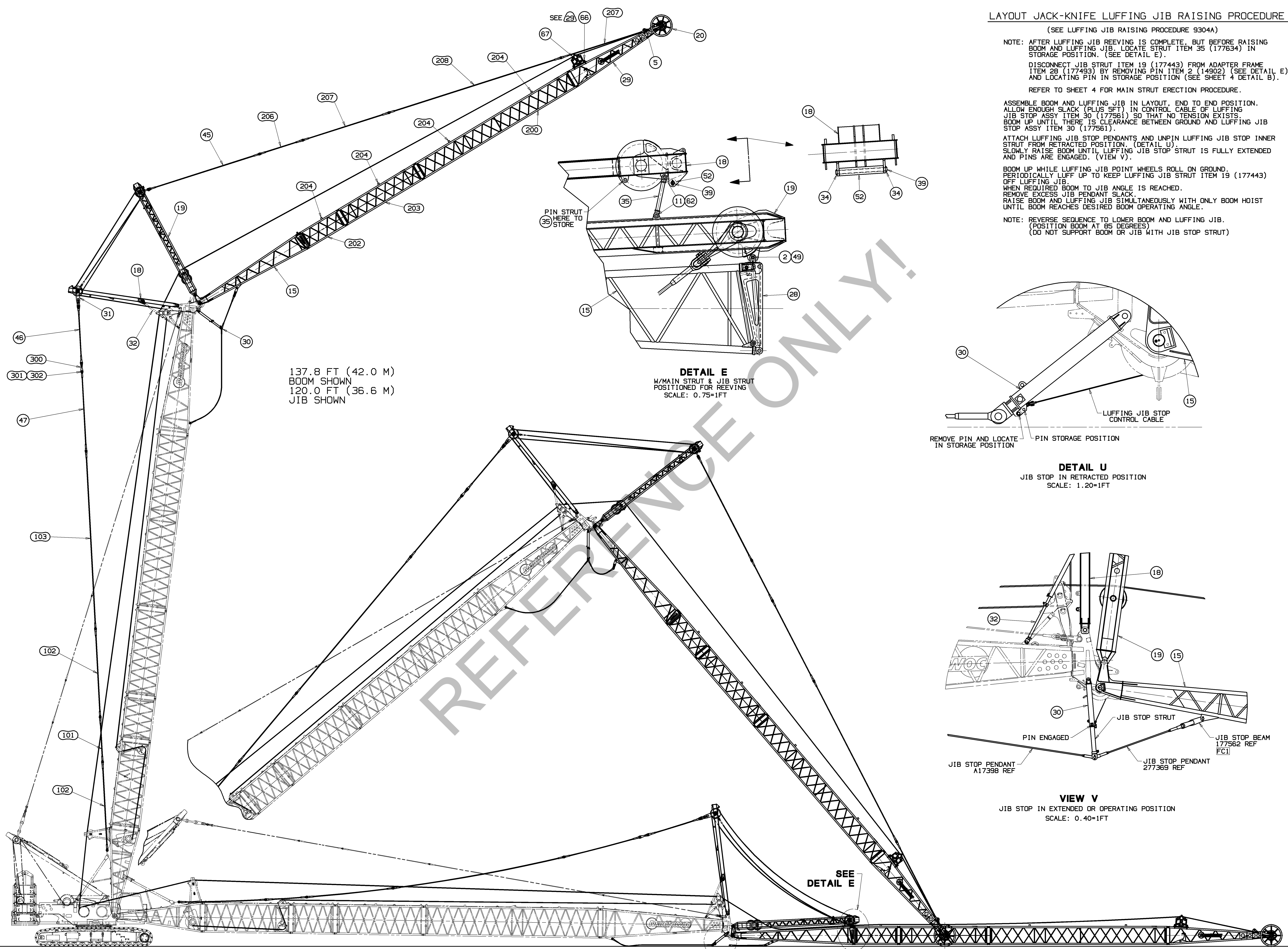
REFER TO SHEET 4 FOR MAIN STRUT ERECTION PROCEDURE.

ASSEMBLE BOOM AND LUFFING JIB IN LAYOUT. END TO END POSITION. ALLOW ENOUGH SLACK (PLUS 5FT) IN CONTROL CABLE OF LUFFING JIB STOP ASSY ITEM 30 (177561) SO THAT NO TENSION EXISTS. BOOM UP UNTIL THERE IS CLEARANCE BETWEEN GROUND AND LUFFING JIB STOP ASSY ITEM 30 (177561).

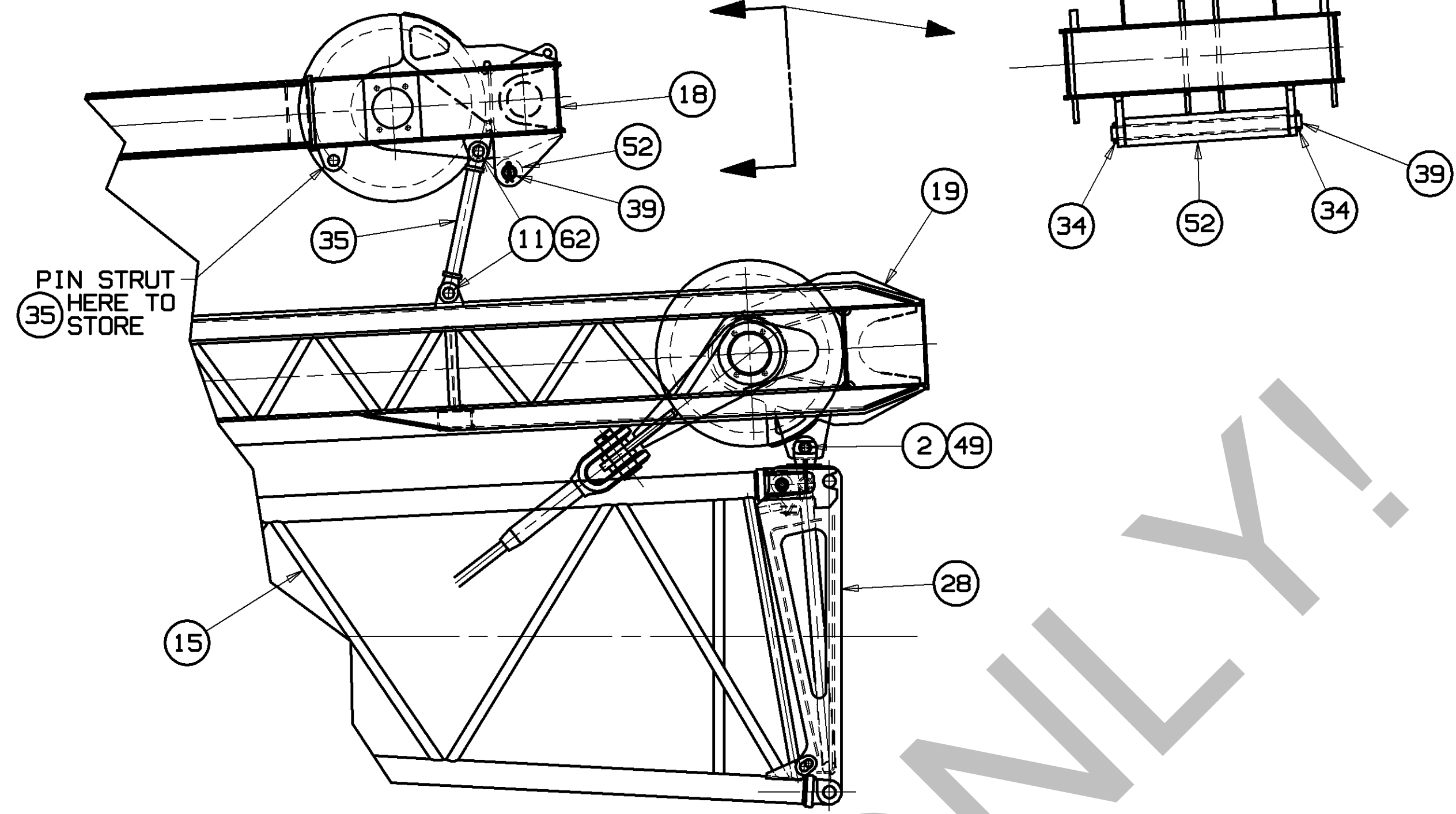
ATTACH LUFFING JIB STOP PENDANTS AND UNPIN LUFFING JIB STOP INNER STRUT FROM RETRACTED POSITION. (DETAIL U) SLOWLY RAISE BOOM UNTIL LUFFING JIB STOP STRUT IS FULLY EXTENDED AND PINS ARE ENGAGED. (VIEW V).

BOOM UP WHILE LUFFING JIB POINT WHEELS ROLL ON GROUND. PERIODICALLY LUFF UP TO KEEP LUFFING JIB STRUT ITEM 19 (177443) OFF LUFFING JIB. WHEN REQUIRED BOOM TO JIB ANGLE IS REACHED. REMOVE EXCESS JIB PENDANT SLACK. RAISE BOOM AND LUFFING JIB SIMULTANEOUSLY WITH ONLY BOOM HOIST UNTIL BOOM REACHES DESIRED BOOM OPERATING ANGLE.

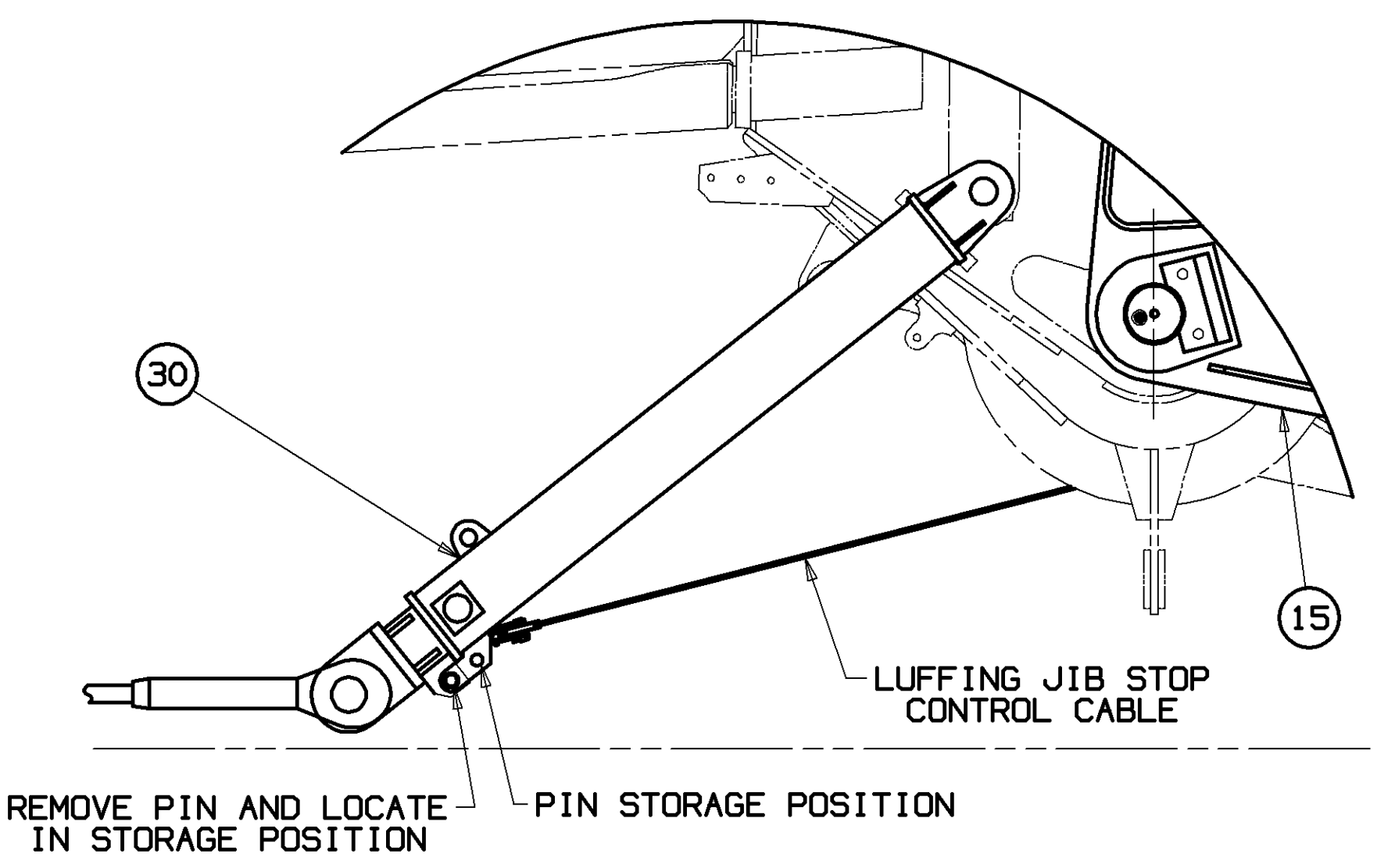
NOTE: REVERSE SEQUENCE TO LOWER BOOM AND LUFFING JIB. (POSITION BOOM AT 85 DEGREES) (DO NOT SUPPORT BOOM OR JIB WITH JIB STOP STRUT)



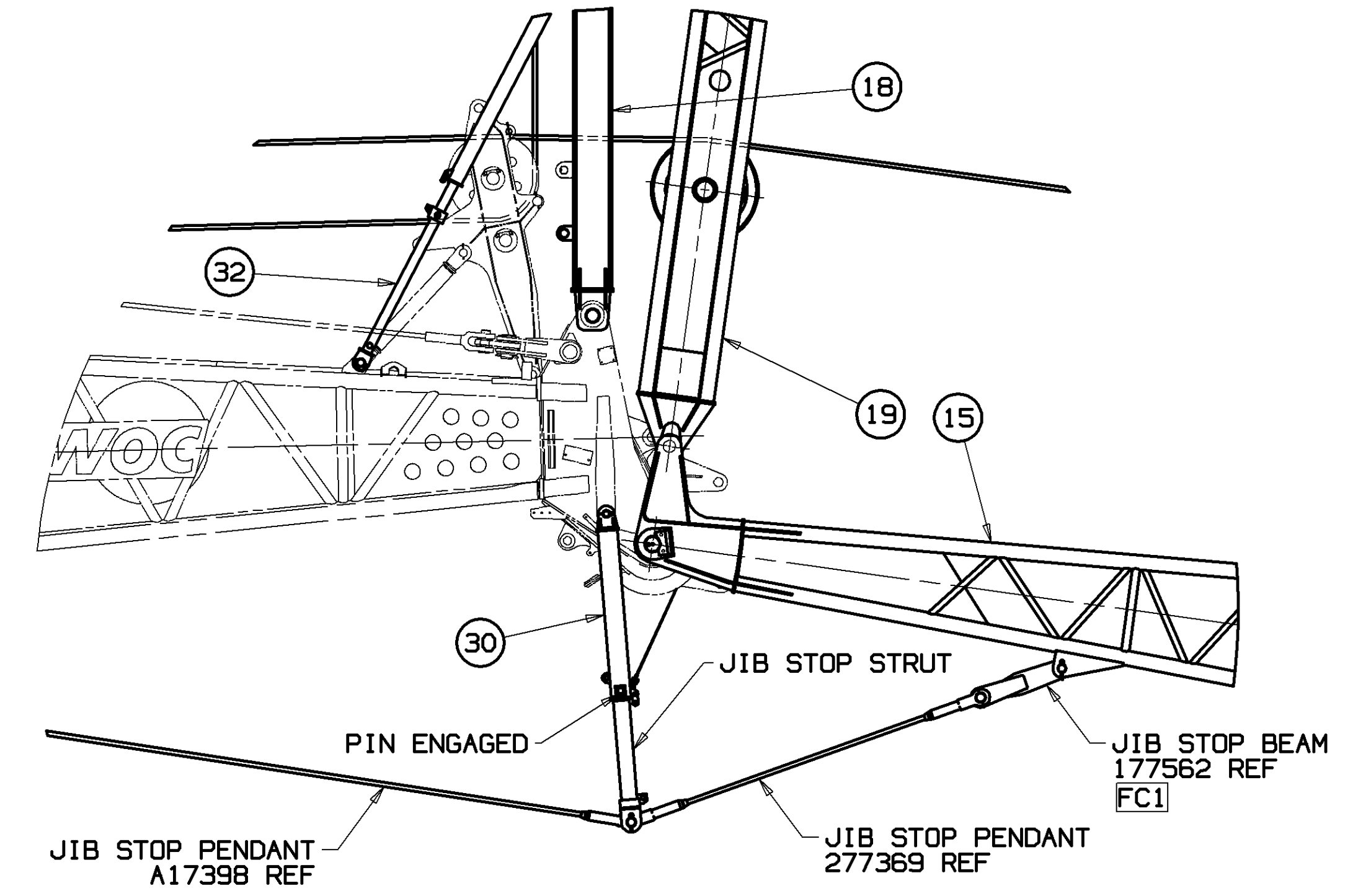
137.8 FT (42.0 M)
BOOM SHOWN
120.0 FT (36.6 M)
JIB SHOWN



DETAIL E
W/MAIN STRUT & JIB STRUT
POSITIONED FOR REEVING
SCALE: 0.75=1FT



DETAIL U
JIB STOP IN RETRACTED POSITION
SCALE: 1.20=1FT



VIEW V
JIB STOP IN EXTENDED OR OPERATING POSITION
SCALE: 0.40=1FT

WITH AUX DRUM OPTION
AND FRONT DRUM NOT USED

SEE DETAIL U

SUPERSEDES 81022481 SHEET 7 OF 03-07-13

TOLERANCE UNLESS OTHERWISE SPECIFIED				DATE: 06-14-14	
DECIMAL PLACES	FABRICATION	MACHINING	DR: CDC	REV: LNK	FC1
(1) PLACE 0.5	± 0.12	± 0.18	DR: NRW	DATE: 06-14-13	
(2) PLACE 0.00	± 0.08	± 0.12	APP: JAS		
(3) PLACE 0.000	± 0.008	± 0.008			
ANGLES	± 1.30°	± 0.90°			

PRIVATE LABELING
REQUIREMENT TO
CONFORM TO
ENGINEERING
SPECIFICATION
S229103794 FOR
COMPONENTS LISTED
IN 03-00-05-006

81022481
SHT 6 OF 6