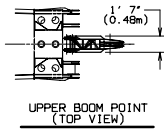
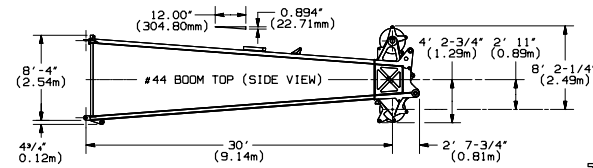
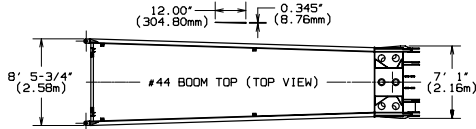


45 TON (41 Mt) BLOCK
TO JIB POINT MINIMUM DISTANCE
#132 JIB - 2 PARTS OF LINE

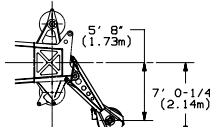
60 TON (54 Mt) BLOCK
W/OUT CHEEK PLATES
TO JIB POINT MINIMUM DISTANCE
#132 JIB - 4 PARTS OF LINE

60 TON (54 Mt) BLOCK
WITH CHEEK PLATES
TO JIB POINT MINIMUM DISTANCE
#132 JIB - 4 PARTS OF LINE

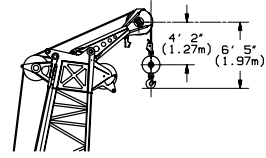
MINIMUM DISTANCE MEASUREMENTS
BASED ON 76° JIB ANGLE.



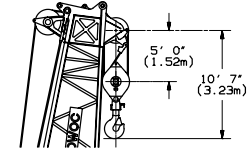
UPPER BOOM POINT
(TOP VIEW)



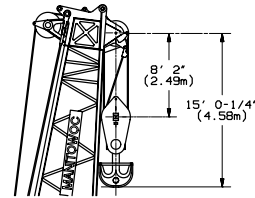
UPPER BOOM POINT
(SIDE VIEW)



15 TON (14 Mt)
SHIVEL HOOK & WEIGHT BALL
TO UPPER BOOM POINT MINIMUM DISTANCE
#79-44 BOOM - 1 PART OF LINE

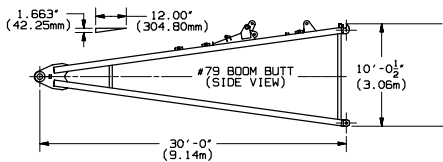
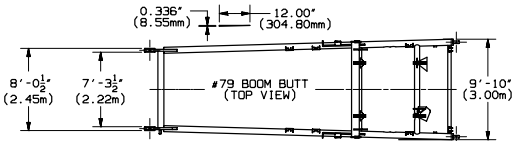
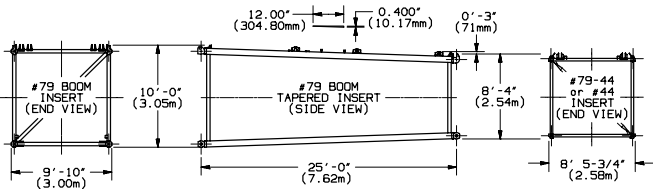
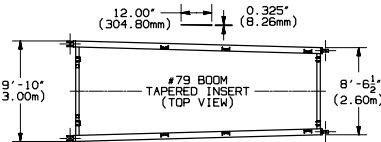


100 TON (91 Mt) BLOCK
TO BOOM POINT MINIMUM DISTANCE
#79-44 BOOM - 6 PARTS OF LINE



300 TON (272 Mt) BLOCK
TO BOOM POINT MINIMUM DISTANCE
#79-44 BOOM - 18 PARTS OF LINE

MINIMUM DISTANCE MEASUREMENTS
BASED ON 83° BOOM ANGLE.



- NOTE 1: THIS DRAWING IS INTENDED ONLY AS A GUIDE TO ASSIST IN JOB PLANNING.
- NOTE 2: FOR PLANNING A LIFT, THIS DRAWING IS TO BE USED IN CONJUNCTION WITH APPROPRIATE CAPACITY CHARTS, RANGE CHART, WIRE ROPE SPECIFICATIONS, RIGGING DRAWING, AND OUTLINE DIMENSIONS.
- NOTE 3: FOR PLANNING LIFTS WHERE CLEARANCES ARE LIMITED AND ACCURACY IS DESIRED, A DETAILED LAYOUT SHOULD BE PREPARED.
- NOTE 4: WHEN EQUIPPED WITH BLOCK-UP LIMIT CONTROL, LOAD BLOCK TO BOOM POINT/JIB POINT MINIMUM DISTANCE MAY BE MORE THAN INDICATED. SEE OPERATOR'S MANUAL FOR "BLOCK-UP LIMIT CONTROL".
- NOTE 5: MAXIMUM BOOM ANGLE 83 DEGREES FOR NO.79-44 BOOM WITH LONG REACH TOP.
- NOTE 6: MINIMUM DISTANCE FROM MANITOWOC LOAD BLOCK TO BOOM POINT BASED ON 2 1/2° FLEET ANGLE OR PHYSICAL LIMITATIONS