

MDT 159

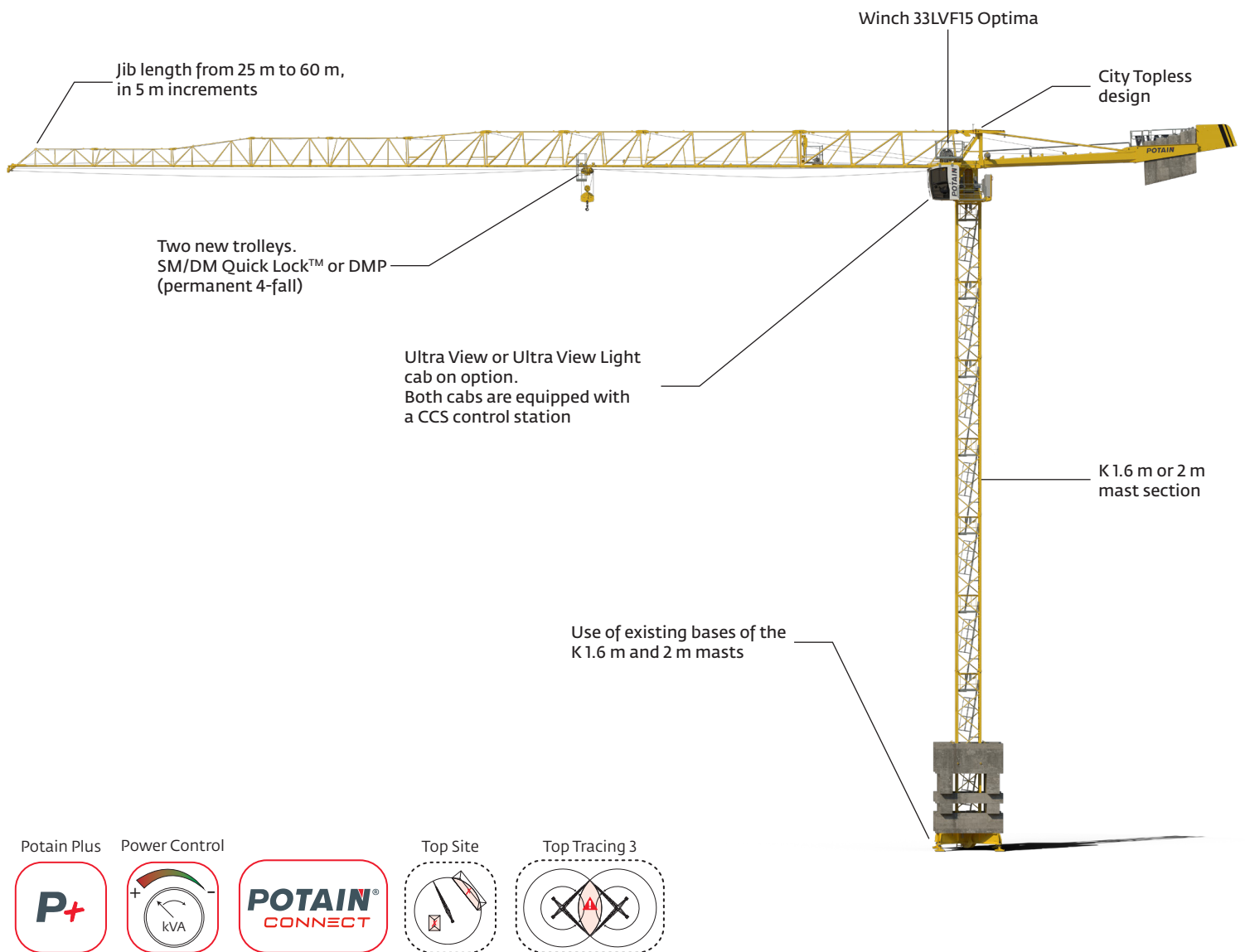
POTAIN®

The new City, innovative and even easier!

Max. load: 6 t

Max. jib: 60 m

CCS control-command system



> Contact your local dealer for more information or go to www.manitowoc.com

New MDT City Topless 6 t crane strengthening the MDT City range



City Topless design

- Topless design ideal for multi-crane job sites (lower overflight heights)
- Simple and quick erection thanks to the City concept and especially the installation of hoisting and trolleying ropes on the ground
- Optimized transport (3 trucks/containers) for the slewing crane part

Performance adapted to current job sites

- Max. load: 6 t
- Jib length from 25 m to 60 m, in 5 m increments
- Load at jib nose: 3.3 t at 45 m
- Load at jib nose: 1.6 t (1.75 t P+) at 60 m
- Variable frequency control mechanisms proven on the job site
- K masts

CCS control-command system much appreciated by the technicians

- High safety standards
- Increased performance
- Optimized ergonomic check
- Integrated maintenance
- Quick and easy fitting on the job site

Equipped with the entirely new Potain CONNECT telematics system that allows:

- Remote data access
- Troubleshooting assistance
- Fleet management and machine use analysis

Two new trolleys making the crane easier to use

SM/DM Quick Lock™

- Automatic rope reeving changeover:
 - Quick and easy, by simply pressing a switch
 - Managed and secured by the CCS control-command system
 - Performed independently by the crane operator from the control panel in the cab (no more need for a ground technician)
 - No manual operation, no accessories required



SM/DM Quick Lock™

DMP: Permanent 4-fall rope reeving

- No need to change the rope reeving on the job site
- Simple and cost-effective system
- Max. hoisting capacity 6 t always available
- Optimized crane hook heights: + 0.5 m compared with the SM/DM Quick Lock™ trolley
- Reduced maintenance



DMP trolley