

DETAIL A
SCALE 0.065

SEE DETAIL D
(SEE SHEET 2)

36.6 M (120.0 FT)
#135A JIB LUFFING

SEE DETAIL B
SEE SECTION C-C
(SEE SHEET 2)

DETAIL B
REAR DRUM ROPE OVER UPPER WIRE ROPE GUIDE SHEAVE
AND UPPER JIB STRUT SHEAVE.
FRONT DRUM ROPE OVER LOWER WIRE ROPE GUIDE AND BOOM/CAP SHEAVE
SCALE 0.040

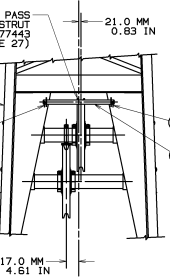
DETAIL B
FRONT DRUM ROPE OVER LOWER WIRE ROPE GUIDE SHEAVE
AND LOWER JIB STRUT SHEAVE.
REAR DRUM ROPE OVER UPPER WIRE ROPE GUIDE AND BOOM/CAP SHEAVE
SCALE 0.040

30.0 M (98.4 FT)
#350 BOOM SHOWN

DO NOT SCALE THIS DRAWING

- 1 TOP 7.01M (23FT) I.D. TAG #80127678.
- 2 INSERT 3.05M (10FT) I.D. TAG #180136.
- 3 INSERT 6.10M (20FT) I.D. TAG #180137.
- B4 4 INSERT 12.19M (40FT) I.D. TAG #048208-4.
SEE DELTA NOTE 33.
- B5 5 MAIN STRUT I.D. TAG #80144926-WIRE ROPE BUTTON WILL PASS THRU.
OPTIONAL I.D. TAG #177439-WIRE ROPE BUTTON WILL NOT PASS THRU.
- B6 6 JIB STRUT I.D. TAG #80144973-WIRE ROPE BUTTON WILL PASS THRU.
OPTIONAL I.D. TAG #177443-WIRE ROPE BUTTON WILL NOT PASS THRU.
- 7 ON DRAWING A16884.
- 8 ON DRAWING A03603.
- 9 ON DRAWING A03150.
- 10 ON DRAWING A02331.
- 11 MAXIMUM NUMBER OF 3.05M (10 FT) JIB INSERTS = 1.
- 12 MAXIMUM NUMBER OF 6.10M (20 FT) JIB INSERTS = 2.
- 13 STARTING WITH JIB BUTT ASSEMBLY (R19),
INSERT ASSEMBLIES MUST BE INSTALLED IN
ASCENDING LENGTH.
- 14 SEE SHEET 3 FOR BOOM BACKSTAY PENDANT MAKE-UP.
- 15 SEE SHEET 4 FOR JIB/JIB PENDANT MAKE-UP.
- 16 FOR MAKE-UP OF BOOM SEE BOOM RIGGING
B20:350 DRAWING 80117859.
- 17 REFER TO SPECIFIC CAPACITY CHART FOR APPROPRIATE
BOOM AND JIB COMBINATIONS.
- 18 REFER TO LUFFING JIB RAISING PROCEDURE
FOR RAISING AND LOWERING BOOM AND JIB, AND
FOR BOOM AND JIB COMBINATIONS THAT REQUIRE
LOWER POINT ASSEMBLY REMOVAL.
- 19 NO. REQ'D FOR ITEMS 300, 301 & 302 ARE SUM OF
QUANTITIES PER BOOM & JIB LENGTH TABLES.
- 20 INSTALL WITH HEAD OF PENDANT PIN 137919 (ITEM R1)
AND 170690 TO THE INSIDE. SEE VIEW E-E & F-F
ON SHEET 3 AND VIEW J-J & K-K ON SHEET 4.
- 21 ON DRAWING A02308.
- 22 ON DRAWING A02422.
SEE DELTA NOTE 28.
- 23 REMOVE LINKS (80121469), PINS W/HO (80121470),
COLLARS (80121471), PINS (80137242) AND
COTTERS (562043) FROM STRAPS ON INSERT
ATTACHING TO TOP ASSY (ITEM 21).
STOW IN PARTS BOX 80124069.
REPLACE WITH LINKS (R24), PINS (R25 & R26),
COLLARS (R20 & R38), AND COTTERS (R12 & R13)
(SEE DETAIL P ON SHEET 5).
- 24 REMOVE EXISTING CONNECTOR PINS 070366 AND
COTTERS (562158) FROM INSERT AT JOINT TO BUTT (R22).
(SEE DETAIL M ON SHEET 5).
STOW IN PARTS BOX 80124069.
USE PINS 177509 (R4) AND COTTERS 562158 (R14)
FROM BUTT ASSY (R22).
- 25 ON DRAWING 80117873 AS OPTION 4.
- 26 STOWED IN PARTS BOX 80124069.
- B7 27 REFER TO LUFFING JIB OPERATOR MANUAL FOR WIRE ROPE REEF
FOR OPTIONAL MAIN STRUT I.D. TAG #177439 AND
JIB STRUT I.D. TAG 177443.
- 28 COMPONENTS ARE UNIQUE TO THE MLC150-1 #135A
LUFFING JIB AND ARE NOT INTERCHANGEABLE WITH
THE #135 LUFFING JIB.
- 29 TOP #350 CAP 2.2M (7.2FT) I.D. TAG #80124038.
- 30 BUTT 8.23M (27FT) I.D. TAG #80127848 (BOLTED HINGE
RETENTION) OR I.D. TAG #177053 (WELDED HINGE RETENTION).
- B8 31 NOT USED WITH (R17) MAIN STRUT OPTIONAL I.D. TAG #177439.
- B9 32 NOT USED WITH (R18) JIB STRUT OPTIONAL I.D. TAG #177443.
- B10 33 INSERT 12.19M (40FT) I.D. TAG #048208-6 CAN BE USED
IN PLACE OF I.D. TAG #048208-4. MAXIMUM NUMBER OF
12.19M (40FT) JIB INSERTS WITH I.D. TAG #048208-6 = 1.

WIRE ROPE BUTTON WILL NOT PASS
THRU (R18) OPTIONAL JIB STRUT
I.D. TAG #177443
(SEE DETAIL NOTE 27)



B11 VIEW BB
JIB STRUT (R18) SHEAVE LOCATIONS WHEN
#135A LUFFING JIB USED WITH MLC150-1
SCALE 0.060

BILL OF MATERIAL		ASSEMBLY
ITEM NO.	DESCRIPTION	QTY
LUFFING JIB RIGGING 135A ON B20		
1	2	80117472
1	2	2774377
2	2	2774398
3	1	80117873
4	2	80130500
5	1	80130542
6		
NO. REQ'D FOR THE FOLLOWING ITEMS ARE IN THE BOOM LENGTH TABLE (SHEET 2)		
100	LINK PENDANT 39.00	177569
101	PENDANT 10 FT - 0.00 (3.05M)	276823
102	PENDANT 19 FT - 6.22 (6.00M)	184932
103	PENDANT 39 FT - 7.50 (12.08M)	189336
104		
NO. REQ'D FOR THE FOLLOWING ITEMS ARE IN THE JIB LENGTH TABLE (SHEET 2)		
200	PENDANT 10 FT - 1.00 (3.07M)	277382
201	PENDANT 20 FT - 1.50 (6.13M)	277383
202	PENDANT 40 FT - 3.00 (12.27M)	277384
203		
204	INSERT ASSY #135 10FT	80118702
205	INSERT ASSY #135 20FT	80118711
206	INSERT ASSY #135 40FT	80118721
207		
NO. REQ'D FOR THE FOLLOWING ITEMS ARE IN BOTH TABLES (SHEET 2)		
300	PIN 1 HOLE W/HO 2.75 DIA X 4.36 LG	170690/20
301	LINK PENDANT 24.00	177553
302	PIN COTTER 0.50 X 5.00 LG	562178
303		
OPTIONAL JIB PARTS ASSEMBLY LIST		
400	1 BLOCK 85 MTON 3 SHEAVE	80120390
401	1 BLOCK 30 MTON 1 SHEAVE	80120391
402	1 OVERHALL BALL 15 MTON	80120392
403	1 ANCHOR UNIV WR JOINT #135	80128061/25
BASIC REFERENCE ITEMS		
R1	2 PIN 1 HOLE W/HO 2.75 DIA X 3.83 LG	137919/20
R2	1 LINK ASSY JIB TOP	177461
R3	1 LINK ASSY	177481
R4	4 PIN 2 HOLE 1.75 DIA X 4.84 LG	177509/24
R5	1 JIB STOP BEAM JIB STOP BEAM	177562
R6	1 LINK ASSY	177565
R7	2 STRUT	177634
R8	1 LINK	177639
R9	1 GUIDE WIRE ROPE ASSY SINGLE SHEAVE BRACKET	179380
R10	1 PENDANT 11 FT - 3.00 (3.43M)	277241/10
R11	2 PENDANT	277369/21
R12	2 PIN COTTER 1/8 DIA X 1.00 LG	562043
R13	4 PIN COTTER 1/8 DIA X 1.50 LG	562085
R14	8 PIN COTTER 3/8 DIA X 6.00 LG	562158/24
R15	2 PIN COTTER 1/2 DIA X 4.00 LG	562172
R16	8 PIN SAFETY .243 OD X 5.00	563640
R17	1 STRUT ASSY #135A MAIN	80117868
R18	1 STRUT ASSY #135 JIB	80117869
R19	4 PIN 2 HOLE 70.0 DIA X 126.0 LG	80118059
R20	2 COLLAR 63.5 DIA X 25.0 LG	80121471
R21	1 TOP ASSY #350 2.2M CAP	80124037/29
R22	1 BUTT ASSY #135 JIB	80127432/30
R23	1 ROPE GUIDE ASSY #350 CAP	80130047
R24	4 LINK WELD #350	80130186
R25	2 PIN W/HO 52.15 DIA X 102.25 LG	80130189
R26	2 PIN W/HO 63.5 DIA X 102.3 LG	80130549
R27	2 STOP #135A STRUT ASSY	80131445/28
R28	1 JIB STOP ASSY #135A LUFFING JIB	80131536/28
R29	2 PENDANT 1.12 DIA X 101.0 INCH	80131801/22
R30	1 LOWER POINT ASSY #350 CAP	80130127/18
R31	1 EST POSITION LIGHT AND ANEMOMETER	801031642
R32	2 PIN 9.5 DIA X 76.2 LG SST	81037242
R33		
R34	- SOCKET BUTTON 22-26MM WIRE ROPE	A11041
R35	4 PIN 2 HOLES 12.7 DIA X 93.0 LG	A11799
R36	4 COLLAR 66mm I.D.	A11800
R37	2 PIN 2 HOLE 1.50 DIA X 3.24 LG	O14902
R38	2 PIN 1 HOLE W/HO 1.250 DIA X 4.24 LG	177571
R39	8 PIN SAFETY .25x1.75 LG	563823
R40	2 PIN QUICK RELEASE .50 DIA X 2.00 LG	563912
R41	2 PIN QUICK RELEASE .75 DIA X 3.75 LG	563797
R42	2 PIN 2 HOLES 1.00 DIA X 3.22 LG	139676
R43	1 SOCKET WEDGE 1.01N	846246/26
R44	3 ROPE GUARD 1.63 OD X .28 W (1N)	80145880/31, 32
R45	1 ROPE GUARD 1.63 OD X .28 W (1N)	80145881/32
R46		
NO. REQ'D FOR THE FOLLOWING REFERENCE ITEMS ARE IN THE JIB LENGTH TABLE		
R100	PIN 2 HOLE 1.75 DIA X 3.41 LG	070366
R101	PIN COTTER 3/8 DIA X 6.00 LG	562158
R102		

PRELIMINARY DRAWING
ENGINEERING
66010794 FOR
CONCRETE LUFFING
IN 05000-05-035

08-10-21

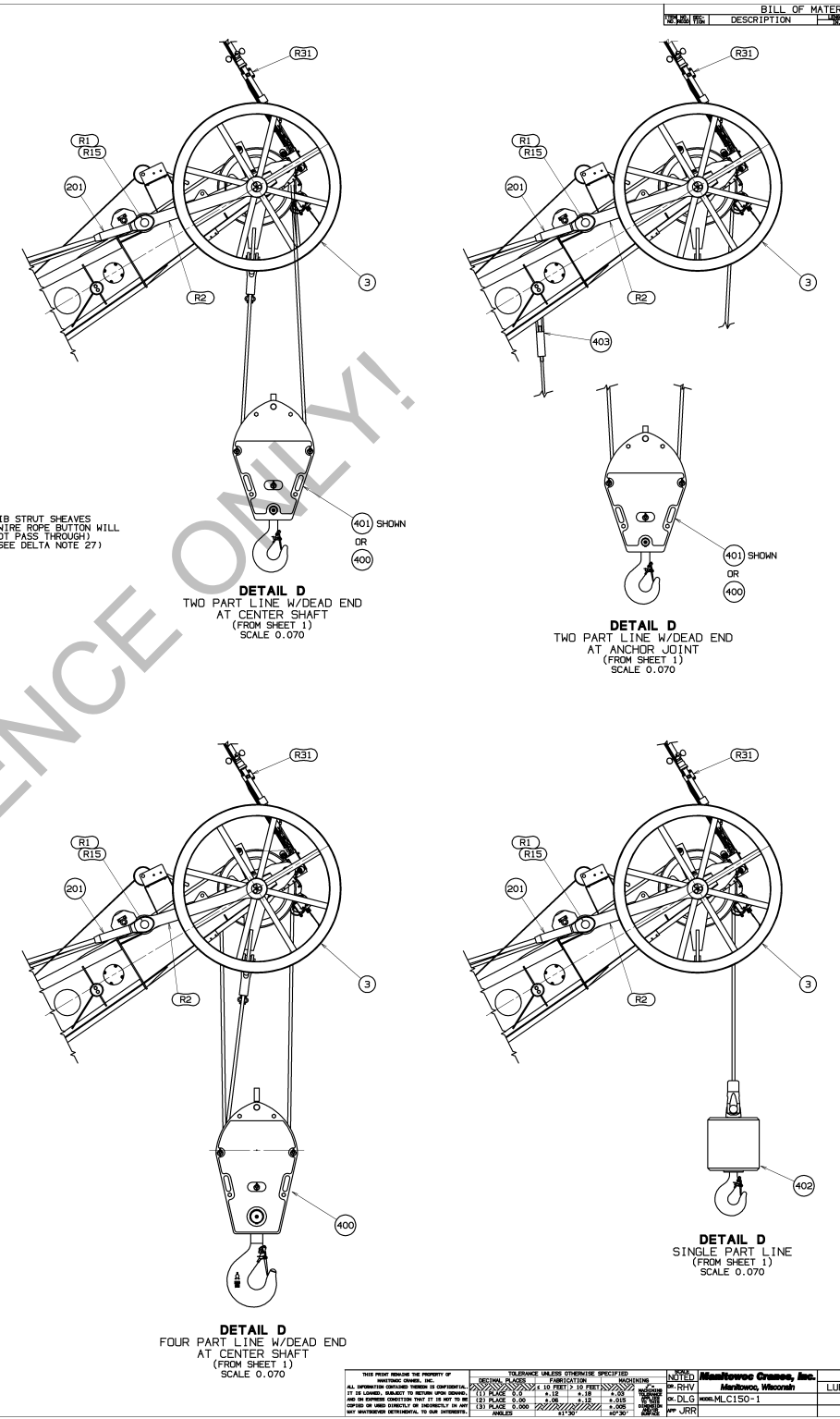
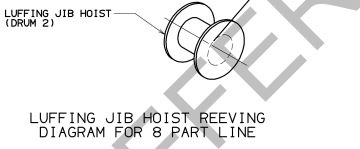
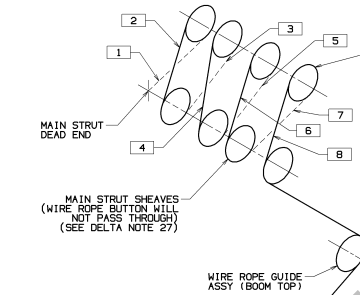
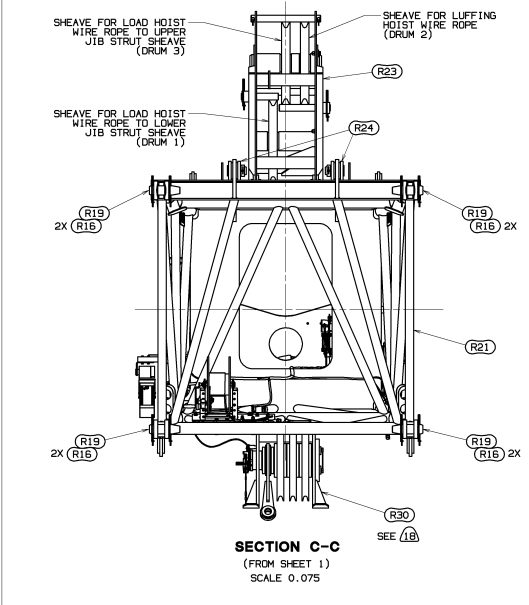
B11

80117862

SHT 1 OF 8

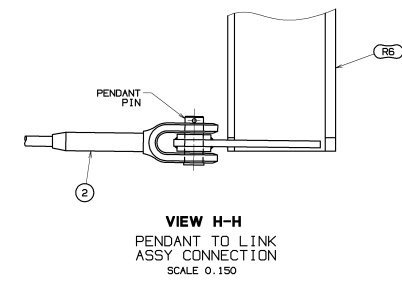
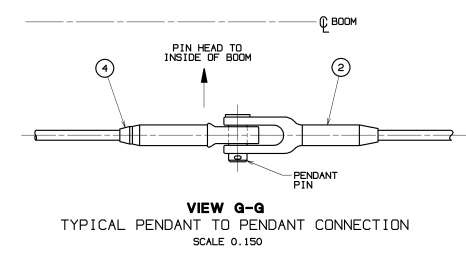
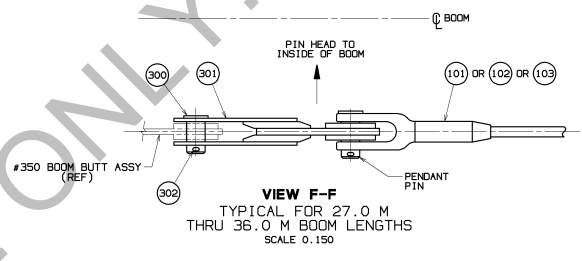
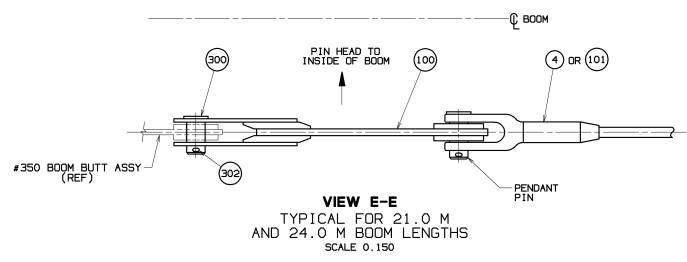
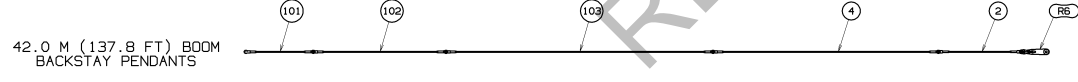
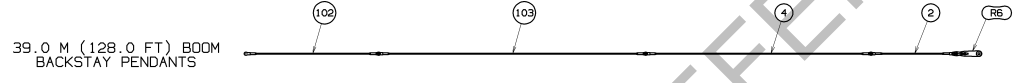
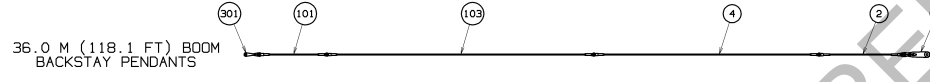
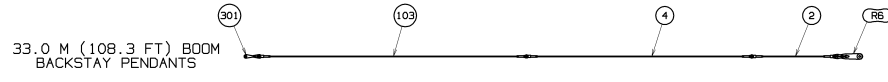
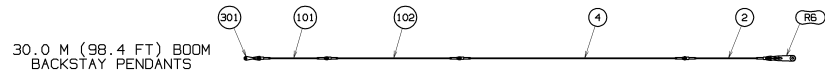
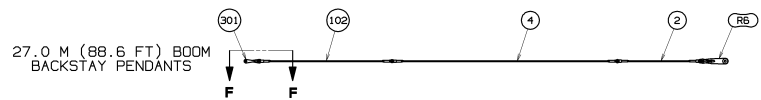
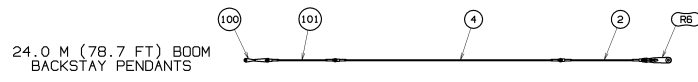
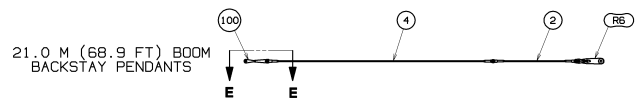
ITEMS REQ'D FOR VARIOUS JIB LENGTHS (15) (17)													
JIB LENGTH	#135 INSERTS				PENDANTS			LINK	PIN		COTTER		
	204	205	206	200	201	202	301	R100	300	R101	302		
	METERS	FEET	INSERT 3.05 M (10FT) ASSY	INSERT 6.10 M (20FT) ASSY	INSERT 12.19 M (40FT) ASSY	PENDANT 3.07 M (10FT-1.0) ASSY	PENDANT 6.13 M (20FT-1.5) ASSY	PENDANT 12.27 M (40FT-3.0) ASSY	LINK 609.5 MM (24.00IN)	PIN 1 HOLE W/HD	PIN 1 HOLE W/HD	COTTER .375 X 6.00	COTTER .50 X 5.0
21.3	70	0	1	0	0	4	0	2	4	2	8	2	
24.4	80	1	1	0	2	4	0	2	8	2	16	2	
27.4	90	DR-0 0	2 0	0 1	0 0	5 2	0 2	2 2	8 4	2 2	16 8	2	
30.5	100	DR-1 1	2 0	0 1	0 2	6 2	0 2	2 2	12 6	2	24 16	2	
33.5	110	0	1	1	0	4	2	0	8	0	16	0	
36.6	120	1	1	1	2	4	2	0	12	0	24	0	
39.6	130	DR-0 0	2 0	1 2	0 2	5 4	2 2	0 4	12 8	0	24 16	0	
42.7	140	DR-1 1	2 0	1 2	2 2	6 4	2 2	0 4	16 12	0	32 24	0	
45.7	150	0	1	2	0	4	4	0	12	0	24	0	
48.8	160	1	1	2	2	4	4	0	16	0	32	0	
51.8	170	DR-0 0	2 0	2 3	0 2	6 4	2 6	0	16 12	0	32 24	0	

ITEMS REQ'D FOR VARIOUS BOOM LENGTHS (14) (17)							
BOOM LENGTH	PENDANTS			LINKS		PIN	COTTER
	101	102	103	100	301	300	302
	METERS	FEET	PENDANT 6.0 M (19FT-0.0)	PENDANT 12.06 M (39FT-7.5)	LINK 12.06 M (39.00 IN)	LINK 609.5 MM (24.00 IN)	PIN 1 HOLE W/HD
21	68.9	0	0	0	2	0	2
24	78.7	2	0	0	2	0	2
27	88.6	0	2	0	0	2	2
30	98.4	2	2	0	0	2	2
33	108.3	0	0	2	0	2	2
36	118.1	2	0	2	0	2	2
39	128.0	0	2	2	0	0	0
42	137.8	2	2	2	0	0	0
45	147.6	0	0	4	0	0	0
48	157.5	2	0	4	0	0	0



TOLERANCE UNLESS OTHERWISE SPECIFIED										
FABRICATION										
FRACTION	TOLERANCE	DECIMAL	TOLERANCE	WELDING	MATERIAL					REVISIONS
1/16	±0.005	0.005	±0.005	PP-DRW	Manitowoc Cranes, Inc.					08-10-21
1/8	±0.010	0.010	±0.010	DR-DLG	Manitowoc, Manitowoc					B
3/16	±0.015	0.015	±0.015	DR-DLG	MANITOWOC-C150-1					LUFFING JIB RIGGING
1/4	±0.020	0.020	±0.020	DR-DLG	PP-DRW					135A DN B20
5/16	±0.025	0.025	±0.025	DR-DLG	PP-DRW					80117862
3/8	±0.030	0.030	±0.030	DR-DLG	PP-DRW					SHT 2 OF 8
1/2	±0.040	0.040	±0.040	DR-DLG	PP-DRW					80117862

BILL OF MATERIAL				ASSEMBLY
ITEM NO.	DESCRIPTION	MATERIAL	QUANTITY	REQ. BY



REFERENCE ONLY!

DO NOT SCALE THIS DRAWING

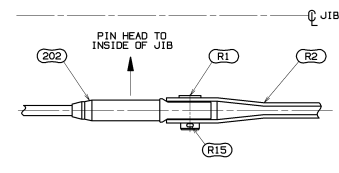
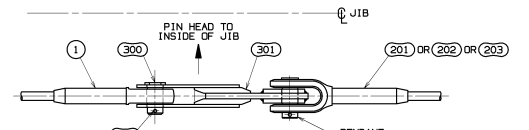
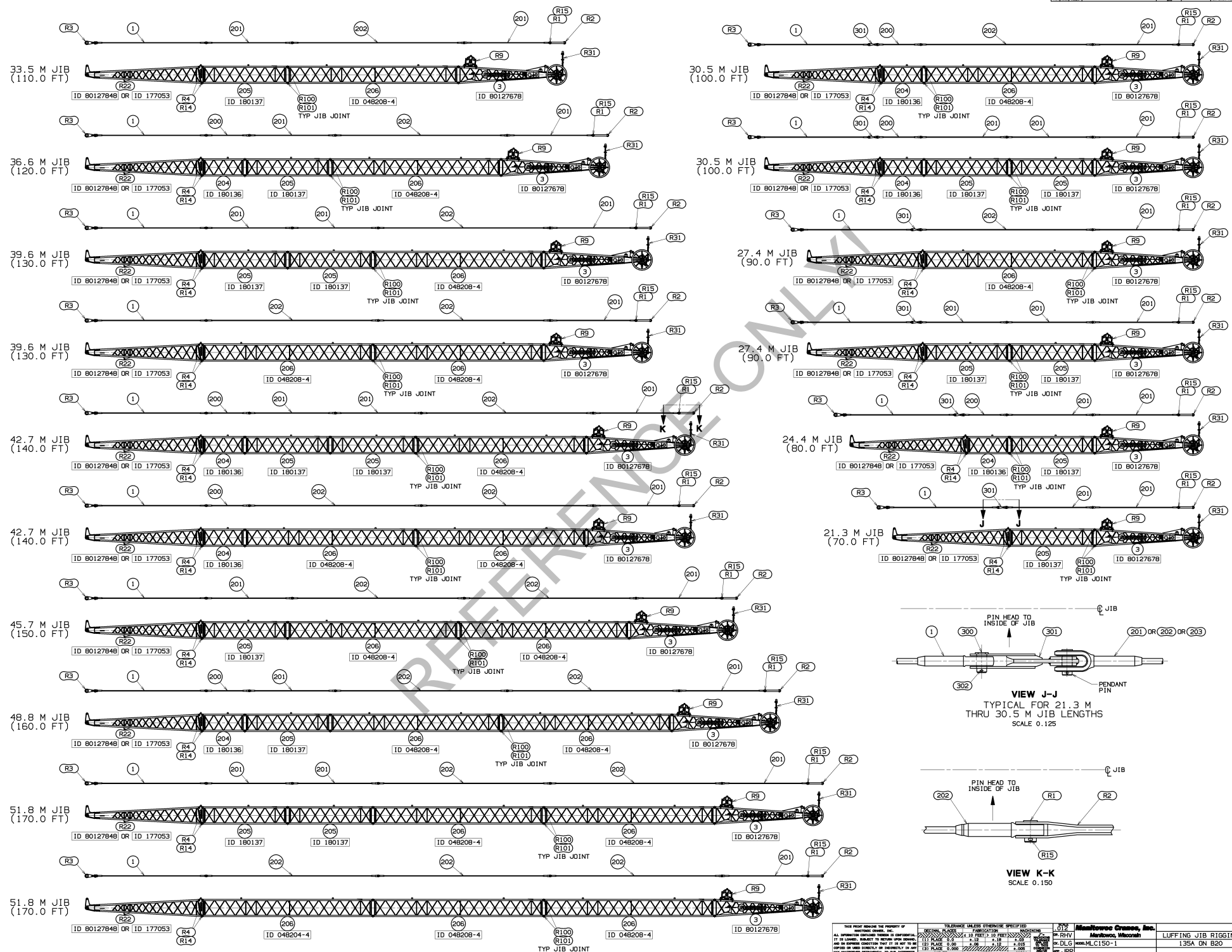
<small>THIS PRINT REMAINS THE PROPERTY OF MARITIME CRANES, INC. ALL INFORMATION CONTAINED HEREIN IS CONFIDENTIAL, IT IS LOANED, READY TO RETURN AND NOT TO BE REPRODUCED OR DISCLOSED TO ANY OTHER PARTY WITHOUT THE WRITTEN CONSENT OF MARITIME CRANES, INC. ANY UNAUTHORIZED REPRODUCTION OR DISSEMINATION OF THIS INFORMATION IS STRICTLY PROHIBITED AND WILL BE PROSECUTED TO THE FULL EXTENT OF THE LAW.</small>	<small>TOLERANCE UNLESS OTHERWISE SPECIFIED</small> FRACTIONAL DECIMALS: 1/16, 1/8, 1/4, 3/8, 1/2, 5/8, 3/4, 7/8 DECIMALS: 0.0005, 0.001, 0.002, 0.005, 0.01, 0.02, 0.05, 0.1, 0.15, 0.2, 0.3, 0.5, 1.0, 1.5, 2.0, 3.0, 4.0, 5.0, 6.0, 8.0, 10.0, 15.0, 20.0, 30.0, 40.0, 50.0, 60.0, 80.0, 100.0 ANGLES: 1/2°, 1°, 1.5°, 2°, 3°, 4.5°, 6°, 9°, 12°, 15°, 30°, 45°, 60°, 90°	DATE: 08-10-21 DWG: PPH_RJR	MANUFACTURED BY: Manitowoc Cranes, Inc. MODEL: MLC150-1	PART NAME: LUFFING JIB RIGGING PART NUMBER: 135A DN B20
		DRAWN BY: PPH_RJR CHECKED BY: PPH_RJR APPROVED BY: PPH_RJR	PROJECT: 80117862 SHEET: 3 OF 8	

80117862
SHT 3 OF 8

PRIVATE LABELING RIGHTS RESERVED TO MARITIME CRANES, INC. ALL INFORMATION CONTAINED HEREIN IS CONFIDENTIAL, IT IS LOANED, READY TO RETURN AND NOT TO BE REPRODUCED OR DISCLOSED TO ANY OTHER PARTY WITHOUT THE WRITTEN CONSENT OF MARITIME CRANES, INC. ANY UNAUTHORIZED REPRODUCTION OR DISSEMINATION OF THIS INFORMATION IS STRICTLY PROHIBITED AND WILL BE PROSECUTED TO THE FULL EXTENT OF THE LAW.

80117862
SHT 3 OF 8

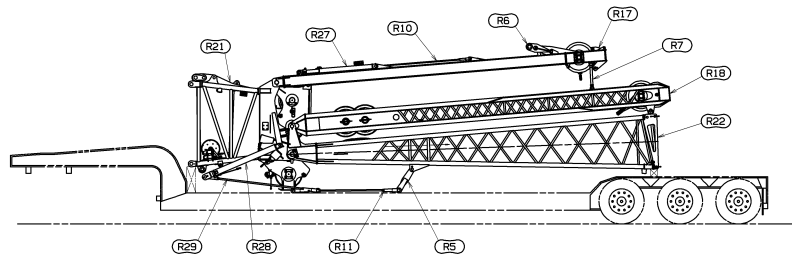
BILL OF MATERIAL			ASSEMBLY
ITEM NO.	DESCRIPTION	MATERIAL	QTY



<small>THIS PRINT REMAINS THE PROPERTY OF ALL INFORMATION CONTAINED HEREIN IS CONFIDENTIAL IT IS LOANED, REPRODUCED OR OTHERWISE DISCLOSED WITHOUT THE WRITTEN CONSENT OF THE COMPANY AND WILL BE DESTROYED UPON THE COMPANY'S REQUEST UNLESS OTHERWISE SPECIFIED BY THE COMPANY</small>	<small>TOLERANCE UNLESS OTHERWISE SPECIFIED: FABRICATION: FRACTIONAL DECIMALS: 0.0005, 0.001, 0.002, 0.005, 0.010, 0.020, 0.050, 0.100, 0.150, 0.200, 0.300, 0.400, 0.500, 0.600, 0.700, 0.800, 0.900, 1.000, 1.500, 2.000, 3.000, 4.000, 5.000, 6.000, 8.000, 10.000, 15.000, 20.000, 30.000, 40.000, 50.000, 60.000, 80.000, 100.000, 150.000, 200.000, 300.000, 400.000, 500.000, 600.000, 800.000, 1000.000 DECIMALS: 0.0005, 0.001, 0.002, 0.005, 0.010, 0.020, 0.050, 0.100, 0.150, 0.200, 0.300, 0.400, 0.500, 0.600, 0.700, 0.800, 0.900, 1.000, 1.500, 2.000, 3.000, 4.000, 5.000, 6.000, 8.000, 10.000, 15.000, 20.000, 30.000, 40.000, 50.000, 60.000, 80.000, 100.000, 150.000, 200.000, 300.000, 400.000, 500.000, 600.000, 800.000, 1000.000</small>	<small>DATE: 08-10-21 BY: RLVH CHECKED: MML/MLC150-1 APP: JRR</small>	<small>80117862 135A DN B20</small>	<small>80117862 SHT 4 OF 8</small>

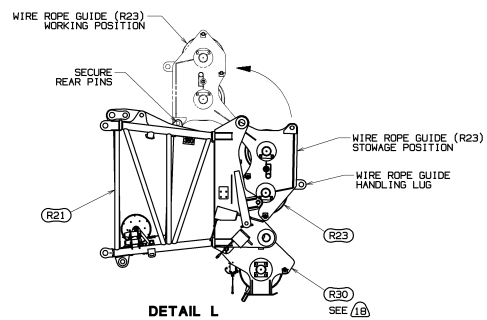
DO NOT SCALE THIS DRAWING

BILL OF MATERIAL			
ITEM NO.	DESCRIPTION	MATERIAL	QUANTITY

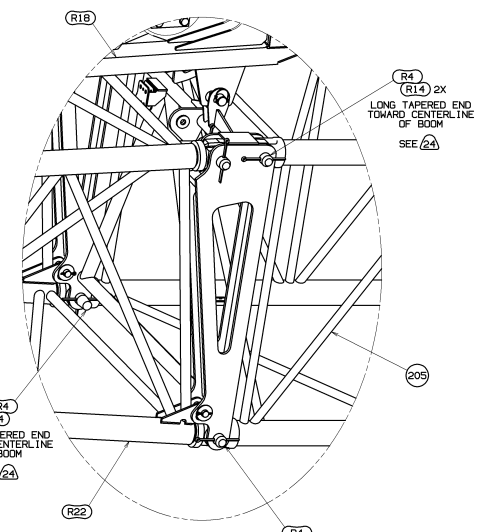


LUFFING JIB SHIPPING CONFIGURATION - ITEM 5

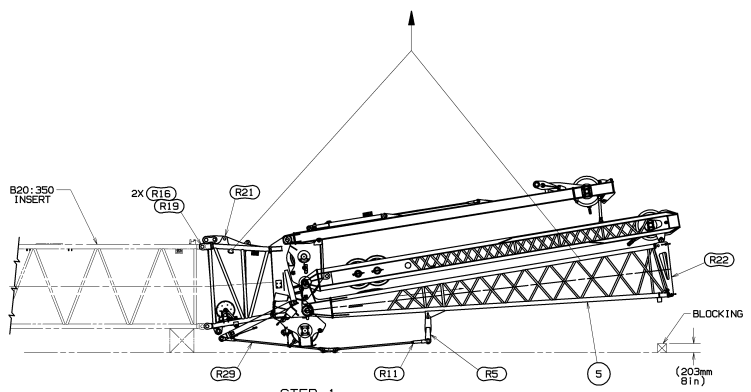
SHIPPING CONFIGURATION CONSISTS OF THE BOOM CAP (R21), JIB BUTT (R22), MAIN STRUT (R17), JIB STRUT (R18), STRUT STOP (R27), JIB STOP (R28), JIB STOP BEAM (R5) AND JIB STOP PENDANTS (R11 & R29).



DETAIL L
WIRE ROPE GUIDE STOWED/WORKING POSITIONS
SCALE 0.040



DETAIL M
SCALE 0.150



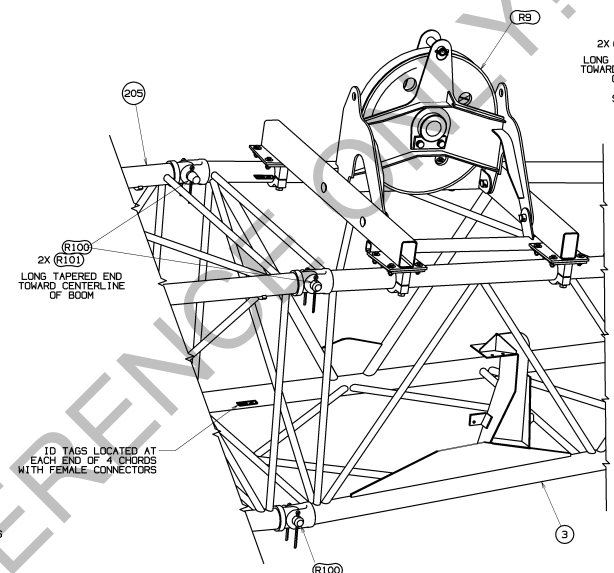
STEP 1
BOOM CAP ASSEMBLY TO BOOM

USING 20 FT LIFTING SLINGS CONNECTED TO LIFTING LUGS ON BOOM CAP (R21) AND CHOKED AROUND BUTT CHORD, LIFT BOOM CAP ASSEMBLY (ITEM 5) INTO POSITION AT END OF LAST BOOM INSERT.

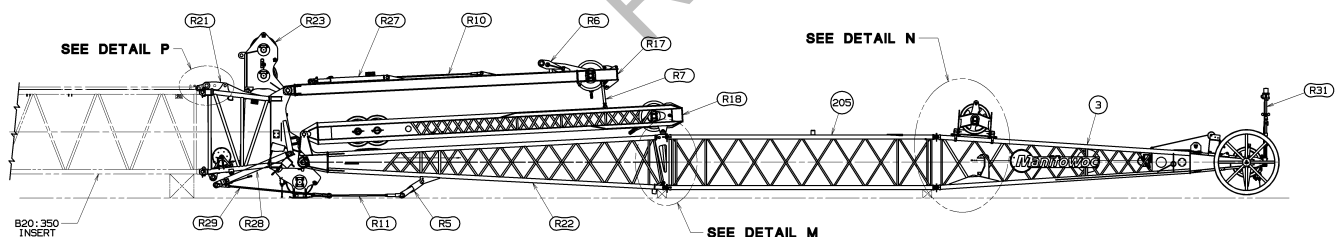
CAUTION: PRIOR TO LIFTING SHIPPING CONFIGURATION (ITEM 5) ENSURE THAT JIB STOP PENDANTS (R11 & R29) AND JIB STOP BEAM (R5) ARE SECURED TO SHIPPING CONFIGURATION.

ALIGN UPPER CONNECTORS AND INSTALL PINS (R19) AND SAFETY PINS (R16). (SEE DETAIL P ON SHEET 5). WITH BLOCKING IN PLACE TO SUPPORT JIB BUTT (R22) LOWER BOOM CAP ASSEMBLY (ITEM 5) TO ALIGN LOWER PIN CONNECTORS ON INSERT WITH LOWER PIN CONNECTOR HOLES IN BOOM CAP (R21) AND INSERT PINS (R19) AND SAFETY PINS (R16). (THE LONG TAPERED END OF PINS (R19) MUST BE POINTED IN).

USING AN ASSIST CRANE ATTACH TO HANDLING LUG ON WIRE ROPE GUIDE (R23) AND LIFT TO ROTATE WIRE ROPE GUIDE TO WORKING POSITION. (SEE DETAIL L ON SHEET 5). ATTACH REAR PINS TO SECURE WIRE ROPE GUIDE (R23) TO BOOM TOP/CAP (R21).



DETAIL N
SCALE 0.125



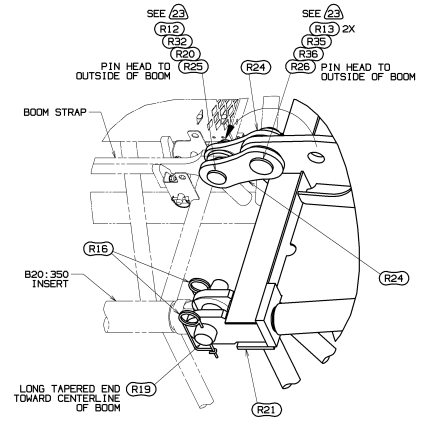
STEP 2
JIB BOOM TO JIB BUTT ASSEMBLY

WITH BLOCKING IN PLACE PIN INSERTS (ITEMS 204, 205, AND/OR 206) AND JIB TOP (ITEM 3) TO JIB BUTT (R22) IN PROPER SEQUENCE. (SEE SHEET 4).

FOR JIB INSERT TO INSERT AND INSERT TO JIB TOP JOINTS REFER TO DETAIL N ON SHEET 5. (LONG TAPERED END OF CONNECTING PINS (R100) MUST POINT INWARD).

FOR JIB INSERT TO JIB BUTT JOINT REFER TO DETAIL M ON SHEET 5. REMOVE AND STOW EXISTING INSERT PIN (R100) AND COTTERS (R101) FROM INSERT NEAREST BUTT. CONNECT INSERT TO BUTT USING BUTT JOINT PINS (R4) AND COTTERS (R14). (LONG TAPERED END OF CONNECTING PINS (R4) MUST POINT INWARD).

FROM #350 BOOM INSERT ATTACHED TO BOOM CAP (R21) REMOVE STRAP LINKS, PINS, COLLARS, AND COTTERS PER DELTA NOTE 23 ON SHEET 1. ROTATE BOOM CAP LINKS (R24) AND ATTACH TO #350 BOOM STRAP USING BOOM CAP SUPPLIED HARDWARE. (SEE DETAIL P ON SHEET 5).



DETAIL P
SCALE 0.175

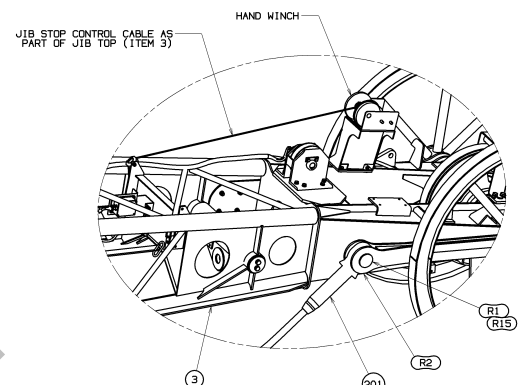
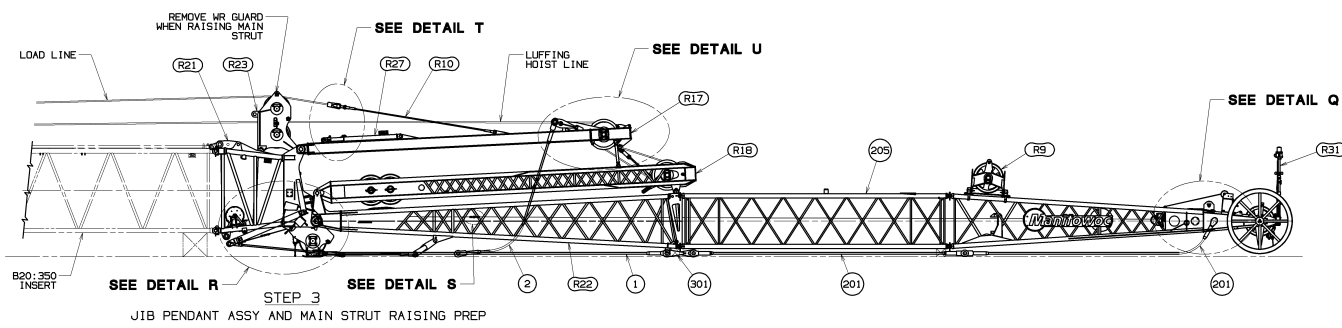
TOLERANCE UNLESS OTHERWISE SPECIFIED		FABRICATION		FINISH		MATERIALS	

PRIVATE LABELING
RESTRICTIONS
APPLY TO
ENGINEERING
SPECIFICATIONS
662010794 FOR
CONCRETE LUFFING
IN 00500-05-035

08-10-21
REV
B

80117862
SHT 5 OF 8

BILL OF MATERIAL				
ITEM NO.	DESCRIPTION	QTY	MATERIAL	ASSEMBLY REF IN



DETAIL Q
SCALE 0.100

STEP 3
JIB PENDANT ASSY AND MAIN STRUT RAISING PREP

ATTACH FRONTSTAY PENDANT (ITEM 201) TO JIB TOP ASSY (ITEM 3) USING PIN (R1) AND COTTER (R15). (SEE VIEW K-K ON SHEET 4 AND DETAIL Q ON SHEET 6). WHILE WORKING TOWARD JIB BUTT, PIN PENDANT TO PENDANT (SEE VIEW J-V ON SHEET 4) PER DESIRED JIB LENGTH. (SEE JIB CONFIGURATION ON SHEET 4). POSITION ASSEMBLED FRONTSTAY PENDANTS ON THE GROUND ALONGSIDE THE JIB.

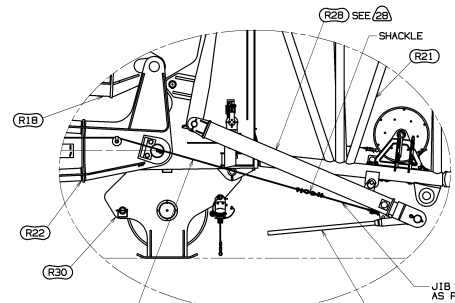
IF SHIPPED LOOSE, ATTACH BACKSTAY PENDANT (ITEM 2) TO LINK ASSY (R6) USING PENDANT PIN. (SEE DETAIL U ON SHEET 6). LAY BACKSTAY PENDANT (ITEM 2) ON GROUND ALONGSIDE JIB.

TO CONNECT JIB STOP (R28) CONTROL CABLE PAY OUT CONTROL CABLE FROM HAND WINCH ON JIB TOP (ITEM 3). (SEE DETAIL Q ON SHEET 6). CONNECT CONTROL CABLE FROM THE HAND WINCH TO CABLE EXTENSION IN THE JIB BUTT (R22) WITH SHACKLE FROM END OF HAND WINCH CONTROL CABLE. (SEE DETAIL S ON SHEET 6). CONNECT END OF JIB BUTT CONTROL CABLE NEAR JIB HINGE TO END OF JIB STOP (R28) CONTROL CABLE WITH SHACKLE FROM END ON JIB BUTT CONTROL CABLE. (SEE DETAIL R ON SHEET 6).

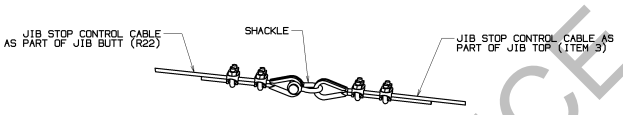
UNPIN TELESCOPING END OF STRUT STOP ASSY (R27) FROM MAIN STRUT (R17). RETRACT INNER TUBE AND LOCK IN RETRACTED POSITION USING QUICK RELEASE PIN (R40) STORED ON OUTER TUBE BRACKETS. (SEE DETAIL T ON SHEET 6).

ROUTE LUFFING HOIST WIRE ROPE FROM THE LUFFING HOIST (DRUM 2) AROUND GUIDE SHEAVE IN WIRE ROPE GUIDE (R23) (SEE SECTION C-C ON SHEET 2). ROUTE THE WIRE ROPE AROUND MAIN STRUT SHEAVES AND JIB STRUT SHEAVES. (SEE REEVING DIAGRAM ON SHEET 2). ANCHOR THE FREE END OF LUFFING HOIST WIRE ROPE TO MAIN STRUT DEAD-END LINK ASSY. (SEE DETAIL U ON SHEET 6).

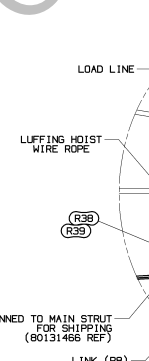
RUN A 26mm WIRE ROPE FROM THE FRONT DRUM THRU GROOVE OF UPPER SHEAVE ON WIRE ROPE GUIDE ASSY (R23) ON BOOM TOP CAP ASSY (R21). (SEE SECTION C-C ON SHEET 2). (TEMPORARILY REMOVE EXISTING WIRE ROPE GUARD AT SHEAVE BEFORE RAISING MAIN STRUT (R17) WITH LOAD LINE). CONTINUE RUN OF WIRE ROPE AND ATTACH TO SOCKET BUTTON (R34). WITH PENDANT (R10) ATTACHED TO THE MAIN STRUT (R17) AND LINK (R6), UNPIN LINK FROM THE MAIN STRUT AND ATTACH TO THE SOCKET BUTTON (R34). (SEE DETAIL T ON SHEET 6). HAUL IN THE LOAD LINE JUST ENOUGH TO SUPPORT THE MAIN STRUT (R17). THEN, UNPIN STRUT SUPPORTS (R7) FROM THE JIB STRUT. (R18) AND ROTATE STRUT INTO HORIZONTAL OR STORAGE POSITION ON THE MAIN STRUT (R17). (SEE DETAIL U ON SHEET 6). RAISE MAIN STRUT WITH LOAD LINE WHILE PAYING OUT LUFFING JIB HOIST LINE (DO NOT ALLOW LUFFING JIB HOIST LINE TO GO INTO TENSION UNTIL MAIN STRUT IS NEAR VERTICAL).



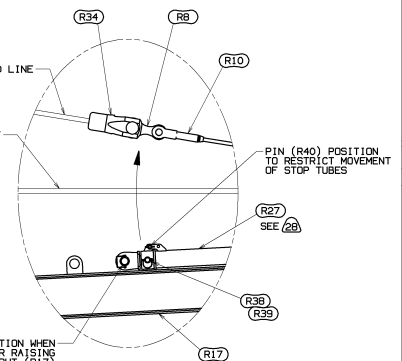
DETAIL R
VIEW FROM LEFT HAND SIDE OF BOOM/JIB
SCALE 0.075



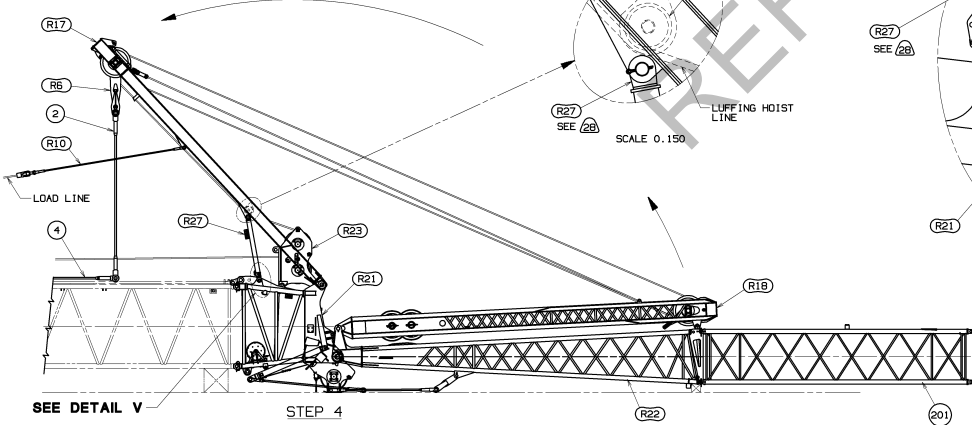
DETAIL S
SCALE 0.400



DETAIL T
STRUT STOP PINNED IN STORAGE POSITION
SCALE 0.100



DETAIL T
STRUT STOP LOCKED IN RETRACTED POSITION
SCALE 0.100



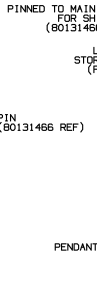
STEP 4
MAIN STRUT RAISING, STRUT STOP ATTACHMENT AND BACKSTAY CONNECTION

RAISE MAIN STRUT (R17) WITH LOAD LINE WHILE PAYING OUT LUFFING JIB HOIST LINE (DO NOT ALLOW LUFFING JIB HOIST LINE TO GO INTO TENSION UNTIL MAIN STRUT IS NEAR VERTICAL). CONTINUE TO HAUL IN LOAD LINE AND PAY OUT LUFFING HOIST WIRE ROPE TO LOWER MAIN STRUT TO REAR.

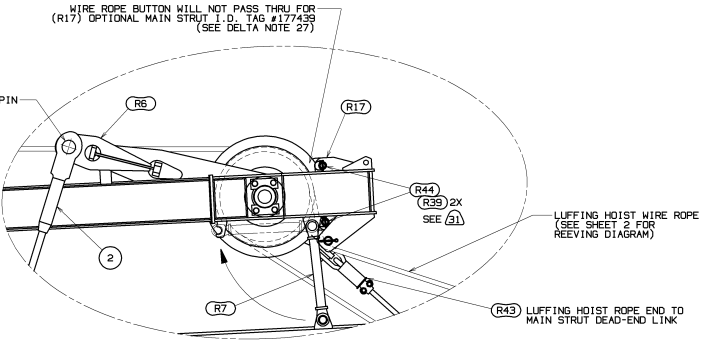
STOP LOWERING THE MAIN STRUT (R17) WHEN THE HOLES IN LUGS ON ENDS OF STRUT STOP INNER TUBES (R27) LINE UP WITH THE HOLES IN LUGS ON THE BOOM TOP/CAP (R21). PIN THE LOWER STOP TUBE TO THE LUGS ON THE BOOM TOP/CAP WITH PINS 80131466 FROM STRUT STOP ASSY (R27). (SEE DETAIL V ON SHEET 6).

ASSEMBLE BACKSTAY PENDANTS AND LINKS IN THE PROPER SEQUENCE (SEE SHEET 3) STARTING AT BACKSTAY LUGS ON THE BOOM BUTT. (SEE DETAIL A ON SHEET 1). FROM MAIN STRUT (R17) ATTACH VERTICALLY HANGING BACKSTAY PENDANT (ITEM 2) TO ASSEMBLED BOOM BACKSTAY PENDANTS (ITEM 4). (SEE VIEW G-G ON SHEET 3).

DO NOT SCALE THIS DRAWING



DETAIL V
SCALE 0.200



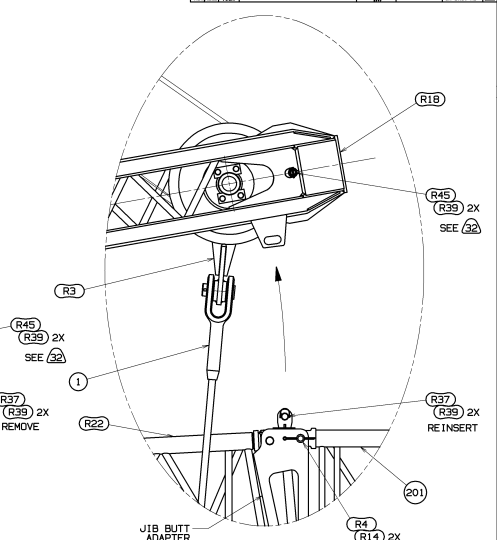
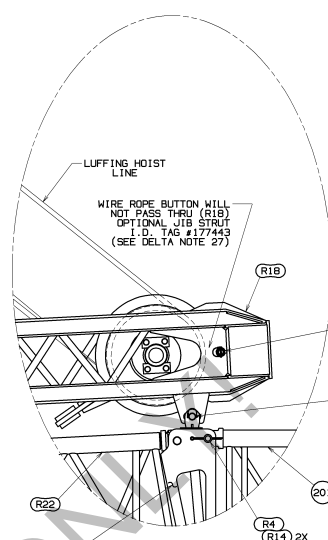
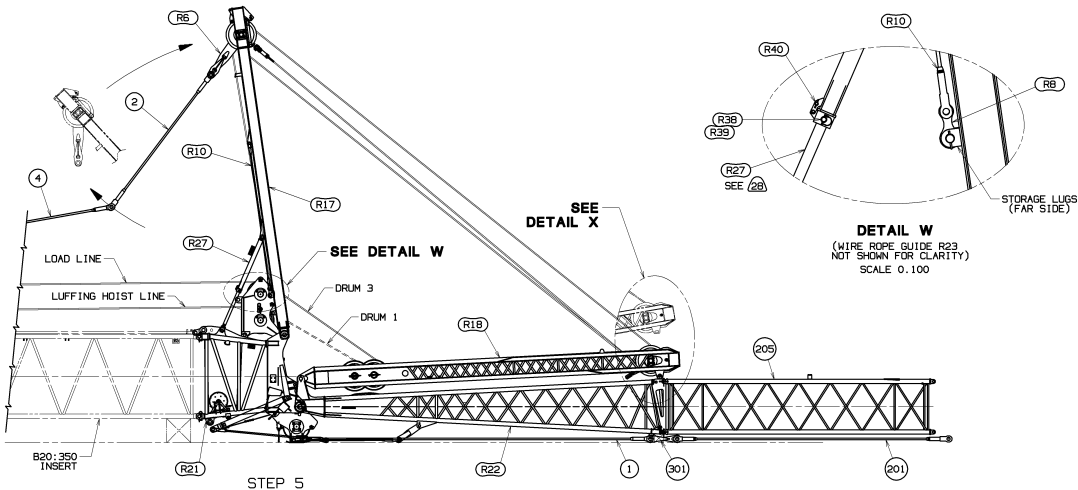
DETAIL U
SCALE 0.100

TOLERANCE UNLESS OTHERWISE SPECIFIED		FABRICATION		MATERIAL		FINISH	
SIZE	TOLERANCE	FINISH	TEMP.	TYPE	TEMP.	TYPE	TEMP.
(1) HOLE	±0.05	AS SUPPLIED	AS SUPPLIED	AS SUPPLIED	AS SUPPLIED	AS SUPPLIED	AS SUPPLIED
(2) HOLE	±0.05	AS SUPPLIED	AS SUPPLIED	AS SUPPLIED	AS SUPPLIED	AS SUPPLIED	AS SUPPLIED
(3) HOLE	±0.05	AS SUPPLIED	AS SUPPLIED	AS SUPPLIED	AS SUPPLIED	AS SUPPLIED	AS SUPPLIED
(4) HOLE	±0.05	AS SUPPLIED	AS SUPPLIED	AS SUPPLIED	AS SUPPLIED	AS SUPPLIED	AS SUPPLIED
(5) HOLE	±0.05	AS SUPPLIED	AS SUPPLIED	AS SUPPLIED	AS SUPPLIED	AS SUPPLIED	AS SUPPLIED
(6) HOLE	±0.05	AS SUPPLIED	AS SUPPLIED	AS SUPPLIED	AS SUPPLIED	AS SUPPLIED	AS SUPPLIED
(7) HOLE	±0.05	AS SUPPLIED	AS SUPPLIED	AS SUPPLIED	AS SUPPLIED	AS SUPPLIED	AS SUPPLIED
(8) HOLE	±0.05	AS SUPPLIED	AS SUPPLIED	AS SUPPLIED	AS SUPPLIED	AS SUPPLIED	AS SUPPLIED
(9) HOLE	±0.05	AS SUPPLIED	AS SUPPLIED	AS SUPPLIED	AS SUPPLIED	AS SUPPLIED	AS SUPPLIED
(10) HOLE	±0.05	AS SUPPLIED	AS SUPPLIED	AS SUPPLIED	AS SUPPLIED	AS SUPPLIED	AS SUPPLIED
(11) HOLE	±0.05	AS SUPPLIED	AS SUPPLIED	AS SUPPLIED	AS SUPPLIED	AS SUPPLIED	AS SUPPLIED
(12) HOLE	±0.05	AS SUPPLIED	AS SUPPLIED	AS SUPPLIED	AS SUPPLIED	AS SUPPLIED	AS SUPPLIED
(13) HOLE	±0.05	AS SUPPLIED	AS SUPPLIED	AS SUPPLIED	AS SUPPLIED	AS SUPPLIED	AS SUPPLIED
(14) HOLE	±0.05	AS SUPPLIED	AS SUPPLIED	AS SUPPLIED	AS SUPPLIED	AS SUPPLIED	AS SUPPLIED
(15) HOLE	±0.05	AS SUPPLIED	AS SUPPLIED	AS SUPPLIED	AS SUPPLIED	AS SUPPLIED	AS SUPPLIED
(16) HOLE	±0.05	AS SUPPLIED	AS SUPPLIED	AS SUPPLIED	AS SUPPLIED	AS SUPPLIED	AS SUPPLIED
(17) HOLE	±0.05	AS SUPPLIED	AS SUPPLIED	AS SUPPLIED	AS SUPPLIED	AS SUPPLIED	AS SUPPLIED
(18) HOLE	±0.05	AS SUPPLIED	AS SUPPLIED	AS SUPPLIED	AS SUPPLIED	AS SUPPLIED	AS SUPPLIED
(19) HOLE	±0.05	AS SUPPLIED	AS SUPPLIED	AS SUPPLIED	AS SUPPLIED	AS SUPPLIED	AS SUPPLIED
(20) HOLE	±0.05	AS SUPPLIED	AS SUPPLIED	AS SUPPLIED	AS SUPPLIED	AS SUPPLIED	AS SUPPLIED
(21) HOLE	±0.05	AS SUPPLIED	AS SUPPLIED	AS SUPPLIED	AS SUPPLIED	AS SUPPLIED	AS SUPPLIED
(22) HOLE	±0.05	AS SUPPLIED	AS SUPPLIED	AS SUPPLIED	AS SUPPLIED	AS SUPPLIED	AS SUPPLIED
(23) HOLE	±0.05	AS SUPPLIED	AS SUPPLIED	AS SUPPLIED	AS SUPPLIED	AS SUPPLIED	AS SUPPLIED
(24) HOLE	±0.05	AS SUPPLIED	AS SUPPLIED	AS SUPPLIED	AS SUPPLIED	AS SUPPLIED	AS SUPPLIED
(25) HOLE	±0.05	AS SUPPLIED	AS SUPPLIED	AS SUPPLIED	AS SUPPLIED	AS SUPPLIED	AS SUPPLIED
(26) HOLE	±0.05	AS SUPPLIED	AS SUPPLIED	AS SUPPLIED	AS SUPPLIED	AS SUPPLIED	AS SUPPLIED
(27) HOLE	±0.05	AS SUPPLIED	AS SUPPLIED	AS SUPPLIED	AS SUPPLIED	AS SUPPLIED	AS SUPPLIED
(28) HOLE	±0.05	AS SUPPLIED	AS SUPPLIED	AS SUPPLIED	AS SUPPLIED	AS SUPPLIED	AS SUPPLIED
(29) HOLE	±0.05	AS SUPPLIED	AS SUPPLIED	AS SUPPLIED	AS SUPPLIED	AS SUPPLIED	AS SUPPLIED
(30) HOLE	±0.05	AS SUPPLIED	AS SUPPLIED	AS SUPPLIED	AS SUPPLIED	AS SUPPLIED	AS SUPPLIED
(31) HOLE	±0.05	AS SUPPLIED	AS SUPPLIED	AS SUPPLIED	AS SUPPLIED	AS SUPPLIED	AS SUPPLIED
(32) HOLE	±0.05	AS SUPPLIED	AS SUPPLIED	AS SUPPLIED	AS SUPPLIED	AS SUPPLIED	AS SUPPLIED
(33) HOLE	±0.05	AS SUPPLIED	AS SUPPLIED	AS SUPPLIED	AS SUPPLIED	AS SUPPLIED	AS SUPPLIED
(34) HOLE	±0.05	AS SUPPLIED	AS SUPPLIED	AS SUPPLIED	AS SUPPLIED	AS SUPPLIED	AS SUPPLIED
(35) HOLE	±0.05	AS SUPPLIED	AS SUPPLIED	AS SUPPLIED	AS SUPPLIED	AS SUPPLIED	AS SUPPLIED
(36) HOLE	±0.05	AS SUPPLIED	AS SUPPLIED	AS SUPPLIED	AS SUPPLIED	AS SUPPLIED	AS SUPPLIED
(37) HOLE	±0.05	AS SUPPLIED	AS SUPPLIED	AS SUPPLIED	AS SUPPLIED	AS SUPPLIED	AS SUPPLIED
(38) HOLE	±0.05	AS SUPPLIED	AS SUPPLIED	AS SUPPLIED	AS SUPPLIED	AS SUPPLIED	AS SUPPLIED
(39) HOLE	±0.05	AS SUPPLIED	AS SUPPLIED	AS SUPPLIED	AS SUPPLIED	AS SUPPLIED	AS SUPPLIED
(40) HOLE	±0.05	AS SUPPLIED	AS SUPPLIED	AS SUPPLIED	AS SUPPLIED	AS SUPPLIED	AS SUPPLIED
(41) HOLE	±0.05	AS SUPPLIED	AS SUPPLIED	AS SUPPLIED	AS SUPPLIED	AS SUPPLIED	AS SUPPLIED
(42) HOLE	±0.05	AS SUPPLIED	AS SUPPLIED	AS SUPPLIED	AS SUPPLIED	AS SUPPLIED	AS SUPPLIED
(43) HOLE	±0.05	AS SUPPLIED	AS SUPPLIED	AS SUPPLIED	AS SUPPLIED	AS SUPPLIED	AS SUPPLIED
(44) HOLE	±0.05	AS SUPPLIED	AS SUPPLIED	AS SUPPLIED	AS SUPPLIED	AS SUPPLIED	AS SUPPLIED
(45) HOLE	±0.05	AS SUPPLIED	AS SUPPLIED	AS SUPPLIED	AS SUPPLIED	AS SUPPLIED	AS SUPPLIED
(46) HOLE	±0.05	AS SUPPLIED	AS SUPPLIED	AS SUPPLIED	AS SUPPLIED	AS SUPPLIED	AS SUPPLIED
(47) HOLE	±0.05	AS SUPPLIED	AS SUPPLIED	AS SUPPLIED	AS SUPPLIED	AS SUPPLIED	AS SUPPLIED
(48) HOLE	±0.05	AS SUPPLIED	AS SUPPLIED	AS SUPPLIED	AS SUPPLIED	AS SUPPLIED	AS SUPPLIED
(49) HOLE	±0.05	AS SUPPLIED	AS SUPPLIED	AS SUPPLIED	AS SUPPLIED	AS SUPPLIED	AS SUPPLIED
(50) HOLE	±0.05	AS SUPPLIED	AS SUPPLIED	AS SUPPLIED	AS SUPPLIED	AS SUPPLIED	AS SUPPLIED

80117862
SHT 6 OF 8

80117862
SHT 6 OF 8

BILL OF MATERIAL				
NO.	QTY	DESCRIPTION	MATERIAL	ASSEMBLY REF. IN



STEP 5
STRUT STOP ENGAGEMENT AND JIB PENDANT TO JIB STRUT ASSEMBLY

UNPIN THE LOAD LINE FROM THE STRUT HANDLING LINK (R8). PIN LINK (R8) AND PENDANT (R10) TO THE STORAGE LUGS ON THE MAIN STRUT (R17). (SEE DETAIL T ON SHEET 6 AND DETAIL W ON SHEET 7).

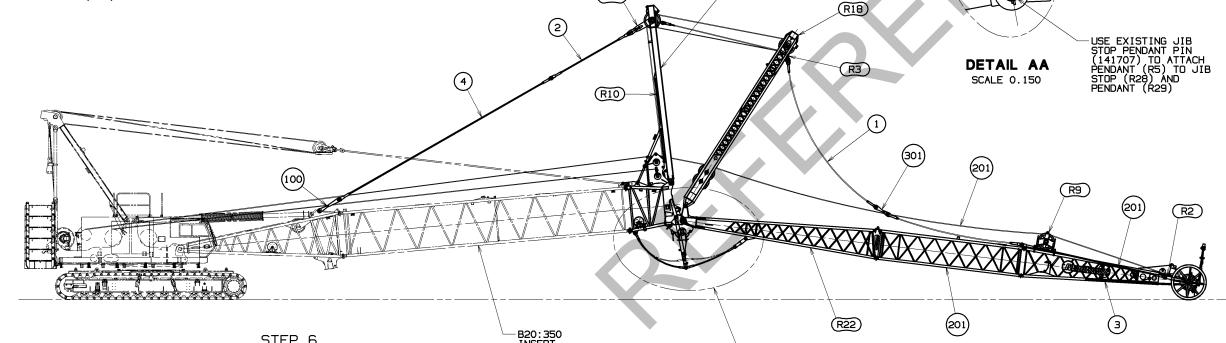
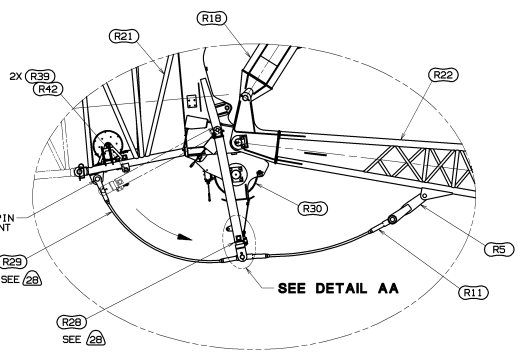
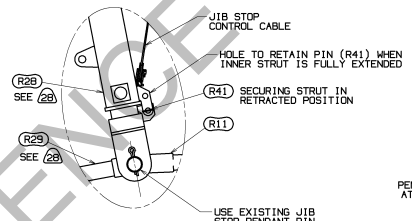
WITH QUICK-RELEASE PIN (R40) STILL IN ERECTING HOLE TO RESTRICT MOVEMENT OF STOP TUBES, REMOVE STOP PINS (R38) FROM MIDDLE STOP TUBES. SLOWLY HAUL IN THE LUFFING HOIST WIRE ROPE UNTIL THE HOLE IN MIDDLE STOP TUBES LINE UP WITH THE UPPER HOLE IN LOWER STOP TUBES. INSTALL STOP PINS (R38) AND SAFETY PINS (R39) IN MIDDLE STOP TUBES. REMOVE QUICK-RELEASE PINS (R40) FROM ERECTING HOLES AND INSTALL THEM IN THE STORAGE HOLES. (SEE DETAIL T ON SHEET 6 AND DETAIL W ON SHEET 7).

ROUTE LOAD LINE FROM FRONT OR REAR DRUM OVER REQUIRED ROPE GUIDE SHEAVE (R23) AND JIB STRUT SHEAVE. RETURN TOP SHEAVE WIRE ROPE GUARD AT ROPE GUIDE (R23) THAT WAS TEMPORARILY REMOVED IN STEP 3 FOR RAISING MAIN STRUT. (SEE DETAIL B ON SHEET 1 AND SECTION C-C ON SHEET 2).

CONNECTING JIB PENDANT (ITEM 1) TO JIB STRUT (R18): (SEE DETAIL X ON SHEET 7)
 LUFF UP OR DOWN AS REQUIRED, TO LOOSEN HOLD-DOWN PINS (R37) IN THE HOLD-DOWN LUGS. REMOVE HOLD-DOWN PINS (R37). LUFF UP UNTIL JIB STRUT (R18) IS APPROXIMATELY 1 METER (3 FT) ABOVE THE JIB BUTT.
 STORE HOLD DOWN PINS (R37) IN THE HOLD-DOWN LUGS ON JIB BUTT ADAPTER (R22).
 PIN BASIC JIB PENDANTS (ITEM 1) TO PENDANT LINKS (R3) ON THE JIB STRUT.
 LUFF UP TO RAISE THE JIB STRUT (R18) UNTIL THE JIB PENDANTS ARE JUST SLIGHTLY ABOVE THE TOP OF THE JIB.
 (GUIDE THE PENDANTS WHILE LUFFING UP TO PREVENT THE PENDANTS AND CONNECTORS FROM STRIKING THE SIDE OF THE JIB).

CAUTION:
 DO NOT ALLOW JIB STRUT (R18) TO COME INTO CONTACT WITH BOOM TOP/CAP (R21) WHEN LUFFING UP. (JIB STRUT DAMAGE COULD OCCUR).

CONSULT LUFFING JIB RAISING PROCEDURE 9851-A TO DETERMINE WHEN LOWER POINT (R30) NEEDS TO BE REMOVED.



STEP 6
JIB STOP TO OPERATING POSITION
 (REFER TO DETAILS Y AND Z ON SHEET 7)
 SCALE 0.013

SUPPORT JIB STOP STRUT SO IT WILL NOT FALL AND REMOVE PINS (R42) AND SAFETY PINS (R39) HOLDING THE STRUT STOP (R28) IN STORED POSITION ON BOOM TOP/CAP (R21). LOWER THE JIB STOP STRUT TO THE OPERATING POSITION. STORE PINS (R39 & R42) IN BOOM TOP/CAP (R21). (SEE DETAIL Y ON SHEET 7).

USING THE HAND WINCH ON THE JIB TOP (SEE DETAIL Q ON SHEET 6), SLACKEN THE JIB STOP (R28) CONTROL CABLE UNTIL IT RESTS ON THE BOTTOM LACINGS OF THE JIB.

WARNING:
 JIB STOP INNER STRUT WILL NOT ENGAGE PROPERLY AND PINS WILL NOT ENGAGE IF CONTROL CABLE IS TIGHT.

SLOWLY BOOM UP TO ALLOW 2 TO 4 FT (0.6 TO 1.2 M) CLEARANCE BETWEEN ENDS OF JIB STOP INNER STRUT AND GROUND. PIN JIB STOP PENDANT (R29) TO BOOM TOP/CAP (R21) LUG AND PIN JIB STOP BEAM PENDANT (R11) TO END OF JIB STOP INNER STRUT (R28). (SEE DETAILS Y AND AA ON SHEET 7). STAND TO SIDE OF JIB STOP STRUT (R28) AND REMOVE QUICK RELEASE PIN (R41) FROM BOTH SIDES OF THE JIB STOP STRUT. (SEE DETAIL AA ON SHEET 7).

NOTE: INNER STRUT WILL EXTEND SLIGHTLY WHEN THIS STEP IS PERFORMED.

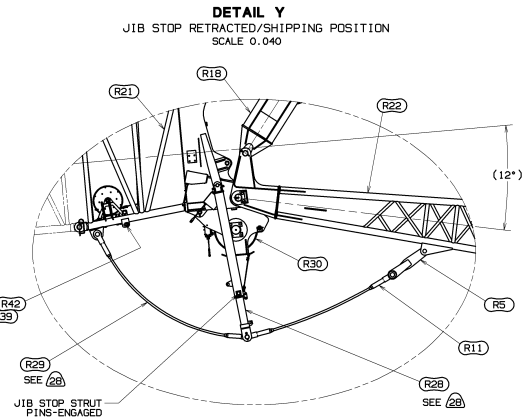
STORE QUICK RELEASE PIN (R41) IN THE STORAGE HOLES ON OUTER STRUT. (SEE DETAIL AA ON SHEET 7).

NOTE: REFER TO OPERATOR MANUAL FOR ADDITIONAL PROCEDURE WHEN LOWER BOOM POINT IS REEVED.

SLOWLY BOOM UP UNTIL THE JIB STOP INNER STRUT IS FULLY EXTENDED. THE BOOM TO LUFFING JIB ANGLE WILL BE APPROXIMATELY 168°. (SEE DETAIL Z ON SHEET 7). JIB STOP STRUT PINS WILL ENGAGE AUTOMATICALLY WHEN THE INNER STRUT IS FULLY EXTENDED. DO NOT RAISE THE BOOM ANY HIGHER UNTIL BOTH PINS ARE ENGAGED. (SEE DETAIL Z ON SHEET 7).

USING THE HAND WINCH ON THE JIB TOP (SEE DETAIL Q ON SHEET 6), VERIFY THAT THE JIB STOP (R28) CONTROL CABLE IS SLACK AND RESTS ON THE BOTTOM LACINGS OF THE JIB.

WARNING:
 JIB STOP CONTROL CABLE MUST BE SLACK AT ALL TIMES DURING LUFFING JIB OPERATION; OTHERWISE, PINS MAY DISENGAGE OR CABLE MAY BREAK.



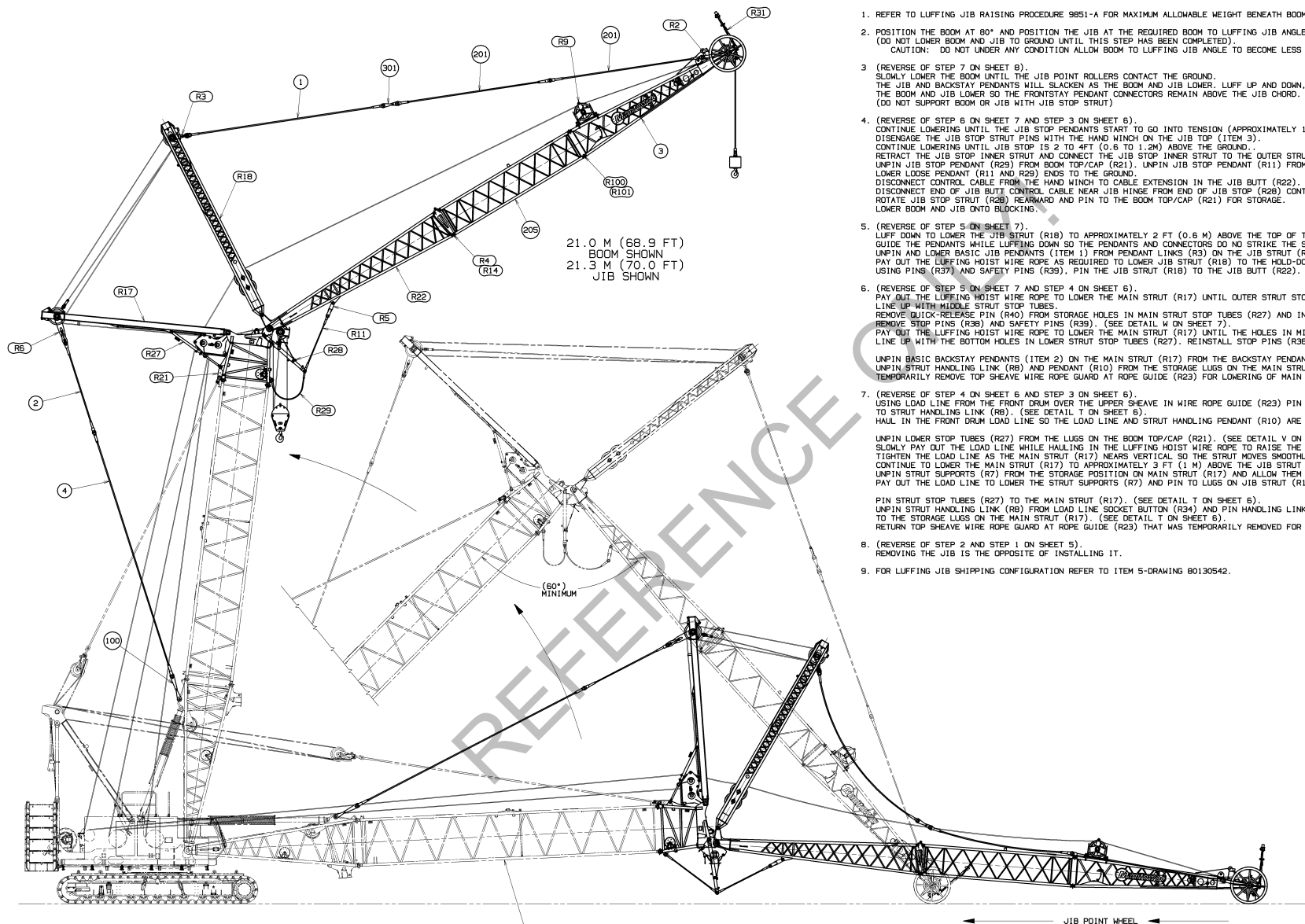
DETAIL Z
 JIB STOP EXTENDED/WORKING POSITION
 SCALE 0.040

<small>THIS PRINT REMAINS THE PROPERTY OF MARLBOROUGH CRANES, INC. ALL INFORMATION CONTAINED HEREIN IS CONFIDENTIAL. IT IS LOANED, REPRODUCED OR OTHERWISE DISCLOSED TO YOU BY MARLBOROUGH CRANES, INC. FOR YOUR USE ONLY. IT IS NOT TO BE REPRODUCED, COPIED, OR TRANSMITTED IN ANY FORM OR BY ANY MEANS, WITHOUT THE WRITTEN PERMISSION OF MARLBOROUGH CRANES, INC.</small>	<small>TOLERANCE UNLESS OTHERWISE SPECIFIED:</small> FRACTIONS: ±0.005 DECIMALS: ±0.005 ANGLES: ±1.0°	<small>FABRICATION:</small> MARLBOROUGH CRANES, INC. 135A DN B20	<small>DATE:</small> 08-10-21	<small>BY:</small> JRR	<small>CHK'D:</small> JRR	<small>APP'D:</small> JRR	Marlbrough Cranes, Inc. Marlborough, Missouri MAR-MLC150-1 LUFFING JIB RIGGING	135A DN B20
	<small>PRIVATE LABELING RIGHTS RESERVED TO THE ENGINEERING SPECIFICATIONS FOR CONCRETE LUFFING IN 00500-09-035</small>							

BILL OF MATERIAL				ASSEMBLY
NO.	QTY	DESCRIPTION	MATERIAL	REV.

BOOM/JIB LOWERING AND DISASSEMBLY PROCEDURE

- REFER TO LUFFING JIB RAISING PROCEDURE 9851-A FOR MAXIMUM ALLOWABLE WEIGHT BENEATH BOOM AND JIB POINT SHEAVES.
- POSITION THE BOOM AT 80° AND POSITION THE JIB AT THE REQUIRED BOOM TO LUFFING JIB ANGLE.
(DO NOT LOWER BOOM AND JIB TO GROUND UNTIL THIS STEP HAS BEEN COMPLETED).
CAUTION: DO NOT UNDER ANY CONDITION ALLOW BOOM TO LUFFING JIB ANGLE TO BECOME LESS THAN 60°. (STRUCTURAL DAMAGE CAN OCCUR).
- (REVERSE OF STEP 7 ON SHEET 8).
SLOWLY LOWER THE BOOM UNTIL THE JIB POINT ROLLERS CONTACT THE GROUND.
THE JIB AND BACKSTAY PENDANTS WILL SLACKEN AS THE BOOM AND JIB LOWER. LUFF UP AND DOWN, AS REQUIRED, WHILE THE BOOM AND JIB LOWER SO THE FRONTSTAY PENDANT CONNECTORS REMAIN ABOVE THE JIB CHORD.
(DO NOT SUPPORT BOOM OR JIB WITH JIB STOP STRUT)
- (REVERSE OF STEP 6 ON SHEET 7 AND STEP 3 ON SHEET 6).
CONTINUE LOWERING UNTIL THE JIB STOP PENDANTS START TO GO INTO TENSION (APPROXIMATELY 168° BOOM TO JIB ANGLE).
DISENGAGE THE JIB STOP STRUT PINS WITH THE HAND WINCH ON THE JIB TOP (ITEM 3).
CONTINUE LOWERING UNTIL JIB STOP IS 2 TO 4 FT (0.6 TO 1.2M) ABOVE THE GROUND.
RETRACT THE JIB STOP INNER STRUT AND CONNECT THE JIB STOP INNER STRUT TO THE OUTER STRUT IN THE RETRACTED POSITION.
UNPIN JIB STOP PENDANT (R29) FROM BOOM TOP/CAP (R21). UNPIN JIB STOP PENDANT (R11) FROM JIB STOP (R28).
LOWER LOOSE PENDANT (R11 AND R29) ENDS TO THE GROUND.
DISCONNECT CONTROL CABLE FROM THE HAND WINCH TO CABLE EXTENSION IN THE JIB BUTT (R22). (SEE DETAIL S ON SHEET 6).
DISCONNECT END OF JIB BUTT CONTROL CABLE NEAR JIB HINGE FROM END OF JIB STOP (R28) CONTROL CABLE. (SEE DETAIL R ON SHEET 6).
ROTATE JIB STOP STRUT (R28) REARWARD AND PIN TO THE BOOM TOP/CAP (R21) FOR STORAGE.
LOWER BOOM AND JIB ONTO BLOCKING.
- (REVERSE OF STEP 5 ON SHEET 7).
LUFF DOWN TO LOWER THE JIB STRUT (R18) TO APPROXIMATELY 2 FT (0.6 M) ABOVE THE TOP OF THE JIB.
GUIDE THE PENDANTS WHILE LUFFING DOWN SO THE PENDANTS AND CONNECTORS DO NOT STRIKE THE SIDE OF THE JIB.
UNPIN AND LOWER BASIC JIB PENDANTS (ITEM 1) FROM PENDANT LINKS (R3) ON THE JIB STRUT (R18).
PAY OUT THE LUFFING HOIST WIRE ROPE AS REQUIRED TO LOWER JIB STRUT (R18) TO THE HOLD-DOWN POSITION.
USING PINS (R37) AND SAFETY PINS (R39), PIN THE JIB STRUT (R18) TO THE JIB BUTT (R22). (SEE DETAIL X ON SHEET 7).
- (REVERSE OF STEP 5 ON SHEET 7 AND STEP 4 ON SHEET 6).
PAY OUT THE LUFFING HOIST WIRE ROPE TO LOWER THE MAIN STRUT (R17) UNTIL OUTER STRUT STOP TUBE ERECTING HOLES LINE UP WITH MIDDLE STRUT STOP TUBES.
REMOVE QUICK-RELEASE PIN (R40) FROM STORAGE HOLES IN MAIN STRUT STOP TUBES (R27) AND INSTALL IN ERECTING HOLES.
REMOVE STOP PINS (R38) AND SAFETY PINS (R39). (SEE DETAIL W ON SHEET 7).
PAY OUT THE LUFFING HOIST WIRE ROPE TO LOWER THE MAIN STRUT (R17) UNTIL THE HOLES IN MIDDLE STRUT STOP TUBES (R27) LINE UP WITH THE BOTTOM HOLES IN LOWER STRUT STOP TUBES (R27). REINSTALL STOP PINS (R38) AND SAFETY PINS (R39).
UNPIN BASIC BACKSTAY PENDANTS (ITEM 2) ON THE MAIN STRUT (R17) FROM THE BACKSTAY PENDANTS (ITEM 4) ON THE BOOM.
UNPIN STRUT HANDLING LINK (R8) AND PENDANT (R10) FROM THE STORAGE LUGS ON THE MAIN STRUT (R17). (SEE DETAIL W ON SHEET 7).
TEMPORARILY REMOVE TOP SHEAVE WIRE ROPE GUARD AT ROPE GUIDE (R23) FOR LOWERING OF MAIN STRUT (R17).
- (REVERSE OF STEP 4 ON SHEET 6 AND STEP 3 ON SHEET 6).
USING LOAD LINE FROM THE FRONT DRUM OVER THE UPPER SHEAVE IN WIRE ROPE GUIDE (R23) PIN WIRE ROPE SOCKET BUTTON (R34) TO STRUT HANDLING LINK (R8). (SEE DETAIL T ON SHEET 6).
HAUL IN THE FRONT DRUM LOAD LINE SO THE LOAD LINE AND STRUT HANDLING PENDANT (R10) ARE JUST SLIGHTLY SLACK.
UNPIN LOWER STOP TUBES (R27) FROM THE LUGS ON THE BOOM TOP/CAP (R21). (SEE DETAIL V ON SHEET 6).
SLOWLY PAY OUT THE LOAD LINE WHILE HAULING IN THE LUFFING HOIST WIRE ROPE TO RAISE THE MAIN STRUT (R17) TO VERTICAL.
TIGHTEN THE LOAD LINE AS THE MAIN STRUT (R17) NEARS VERTICAL SO THE STRUT MOVES SMOOTHLY PAST VERTICAL.
CONTINUE TO LOWER THE MAIN STRUT (R17) TO APPROXIMATELY 3 FT (1 M) ABOVE THE JIB STRUT (R18).
UNPIN STRUT SUPPORTS (R7) FROM THE STORAGE POSITION ON MAIN STRUT (R17) AND ALLOW THEM TO HANG VERTICALLY.
PAY OUT THE LOAD LINE TO LOWER THE STRUT SUPPORTS (R7) AND PIN TO LUGS ON JIB STRUT (R18). (SEE DETAIL U ON SHEET 6).
PIN STRUT STOP TUBES (R27) TO THE MAIN STRUT (R17). (SEE DETAIL T ON SHEET 6).
UNPIN STRUT HANDLING LINK (R8) FROM LOAD LINE SOCKET BUTTON (R34) AND PIN HANDLING LINK (R8) AND PENDANT (R10) TO THE STORAGE LUGS ON THE MAIN STRUT (R17). (SEE DETAIL T ON SHEET 6).
RETURN TOP SHEAVE WIRE ROPE GUARD AT ROPE GUIDE (R23) THAT WAS TEMPORARILY REMOVED FOR LOWERING MAIN STRUT (R17).
- (REVERSE OF STEP 2 AND STEP 1 ON SHEET 5).
REMOVING THE JIB IS THE OPPOSITE OF INSTALLING IT.
- FOR LUFFING JIB SHIPPING CONFIGURATION REFER TO ITEM 5-DRAWING 80130542.



STEP 7
(SEE LUFFING JIB RAISING PROCEDURE 9851-A)
JACK-KNIFE LUFFING JIB RAISING PROCEDURE

BOOM UP WHILE LUFFING JIB POINT WHEELS ROLL ON GROUND.
LUFF UP AND DOWN, AS REQUIRED, WHILE THE BOOM AND JIB RISE SO THE JIB PENDANT CONNECTORS REMAIN 6-12" ABOVE THE JIB CHORD.
WHEN REQUIRED BOOM TO JIB ANGLE IS REACHED, REMOVE EXCESS JIB PENDANT SLACK.
CAUTION: DO NOT UNDER ANY CONDITION ALLOW BOOM TO LUFFING JIB ANGLE TO BECOME LESS THAN 60°. (STRUCTURAL DAMAGE CAN OCCUR).
RAISE BOOM AND LUFFING JIB SIMULTANEOUSLY WITH ONLY BOOM HOIST UNTIL BOOM REACHES ANGLE LISTED IN THE LUFFING JIB RAISING PROCEDURE 9851-A.

DO NOT SCALE THIS DRAWING

THIS PRINT REMAINS THE PROPERTY OF MILWAUKEE CRANES, INC. ALL INFORMATION CONTAINED HEREIN IS CONFIDENTIAL. IT IS LOANED, RENTED, OR OTHERWISE MADE AVAILABLE TO YOU BY THE COMPANY. IT IS TO BE KEPT IN STRICTLY CONFIDENTIAL AND NOT TO BE REPRODUCED, COPIED, OR IN ANY MANNER DISCLOSED TO ANY OTHER PERSON OR ENTITY WITHOUT THE WRITTEN PERMISSION OF MILWAUKEE CRANES, INC.	TOLERANCE UNLESS OTHERWISE SPECIFIED: FABRICATION DIMENSIONS FRACTIONS DECIMALS ANGLES 1/16" ±0.005 1/32" ±0.002 1/64" ±0.001 1/8" ±0.003 1/4" ±0.004 3/8" ±0.005 1/2" ±0.006 3/4" ±0.008 1" ±0.010 1 1/2" ±0.015 2" ±0.020 3" ±0.030 4" ±0.040 6" ±0.060 8" ±0.080 10" ±0.100 12" ±0.120 15" ±0.150 20" ±0.200 25" ±0.250 30" ±0.300 36" ±0.360 42" ±0.420 48" ±0.480 54" ±0.540 60" ±0.600 72" ±0.720 84" ±0.840 96" ±0.960 108" ±1.080 120" ±1.200	DATE: 08-10-21 BY: [Signature] CHECKED BY: [Signature] APPROVED BY: [Signature]	Milwaukee Cranes, Inc. Milwaukee, Wisconsin MILWAUKEE CRANES, INC. 135A DN B20 LUFFING JIB RIGGING	80117862 SHT 8 OF 8
--	---	--	--	------------------------