

Center of Gravity

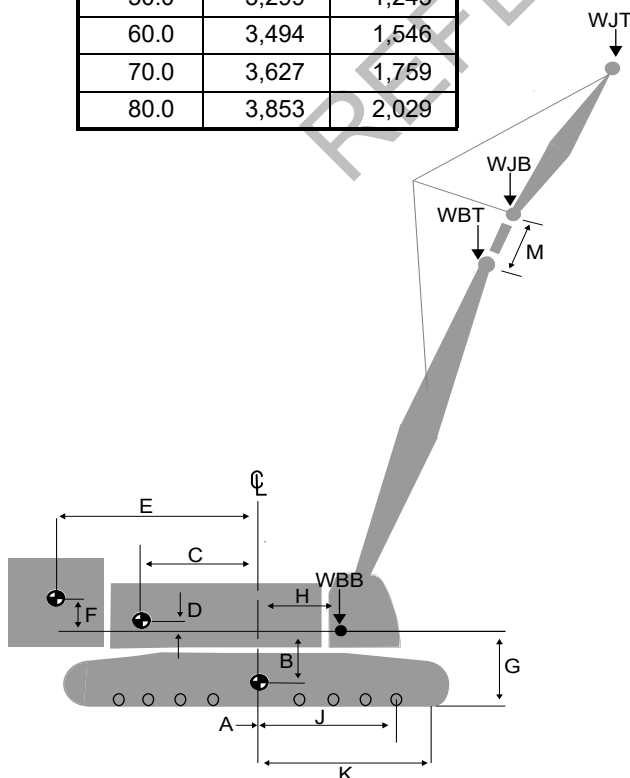
Boom No. B10:350

REFERENCE DIMENSIONS (in.)	
G	84.0
H	48.0
J	110.0
L	10.0
K	136.7
M	26.6
N	110.0
Crawler Pad (MCC P/N)	
48 in. Flat (80117201)	
P	40.5
R	43.8
T	47.2
48 in. Tapered (040246)	
P	20.3
R	43.1
T	47.2

WEIGHT AND CENTER OF GRAVITY		
	Dimension (in.)	Weight (lb)
SERIES 0		
A	0.0	88,917
B	59.5	
C	47.9	62,585
D	14.5	
E	182.4	57,540
F	-7.2	
SERIES 1		
A	0.0	88,917
B	59.5	
C	47.9	62,585
D	14.5	
E	182.4	75,197
F	0.8	
SERIES 2		
A	0.0	123,976
B	57.1	
C	47.9	62,585
D	14.5	
E	182.4	110,511
F	17.9	

LATTICE WEIGHTS		
Boom Length (ft)	Boom No. B10:350	
	WBB (lb)	WBT (lb)
49.2	6,137	9,542
59.1	7,203	8,837
68.9	7,830	9,081
78.7	8,695	9,581
88.6	9,208	9,944
98.4	10,030	10,489
108.3	10,359	10,725
118.1	11,172	11,279
128.0	11,601	11,730
137.8	12,401	12,299
147.6	12,619	12,627
157.5	13,422	13,191
167.3	13,820	13,676
177.2	14,617	14,247
187.0	14,784	14,629
196.9	15,587	15,194
206.7	15,969	15,694
216.5	16,767	16,264
226.4	17,131	16,756
236.2	17,812	17,450
246.1	18,265	17,876
255.9	18,953	18,562

LATTICE WEIGHTS		
Jib Length (ft)	Jib No. 134	
	WJB (lb)	WJT (lb)
30.0	2,993	559
40.0	3,126	922
50.0	3,299	1,245
60.0	3,494	1,546
70.0	3,627	1,759
80.0	3,853	2,029



Note 1: Weight of all load blocks, hooks, weight ball, slings, hoist lines, etc., beneath boom and jib point sheaves is not considered part of boom and jib weights. All items suspended from boom or jib must be considered part of the load.

Note 2: Consult proper crane capacity chart for lifting capacities and allowable boom and jib combinations.

Note 3: If equipped with upper boom point, add 950 lb to WBT.

Not to be used for crane rating purposes.

