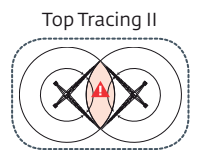
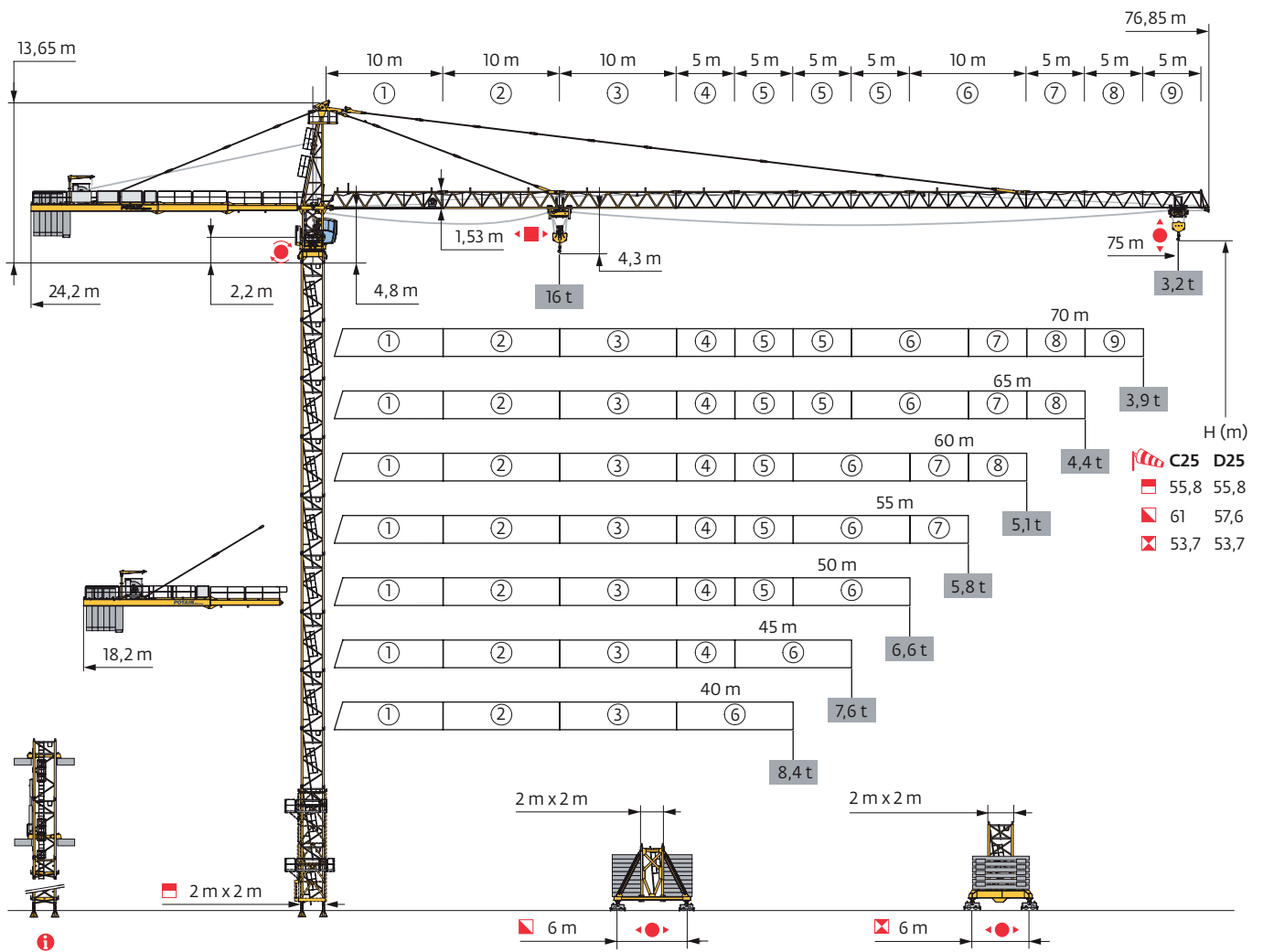
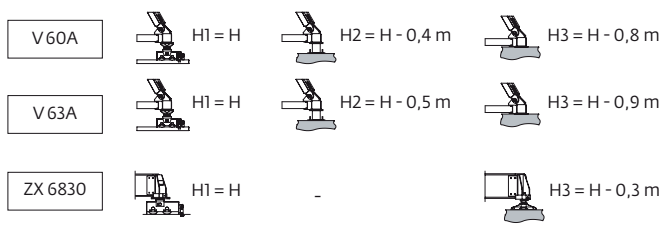
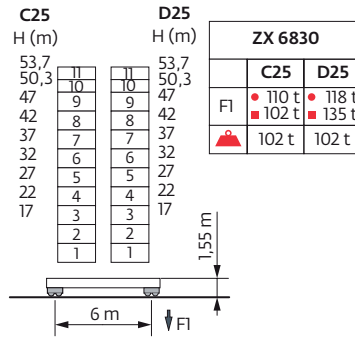
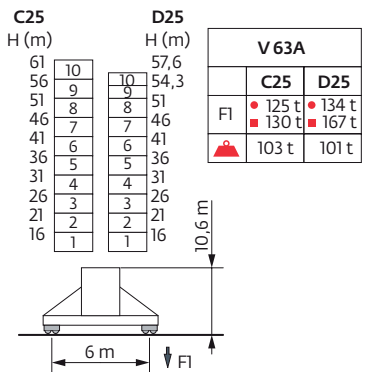
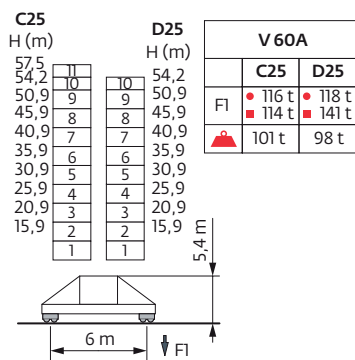
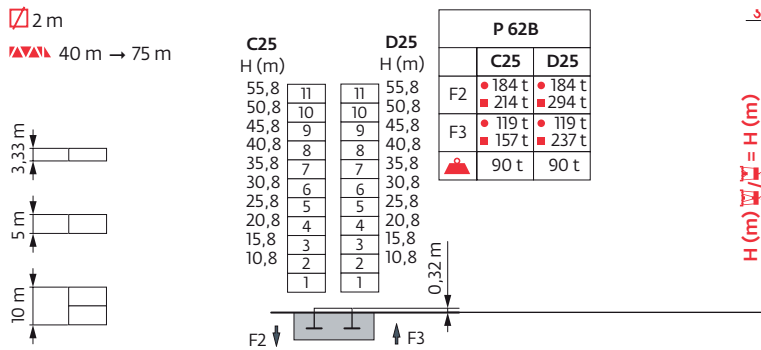


## MD 365 B L16



Mât - Réactions / Mast - Reaktionskräfte / Mast - Reactions / Mástil - Reacciones / Torre - Reazioni  
 Tramo - Reações / Реакция опор мачты

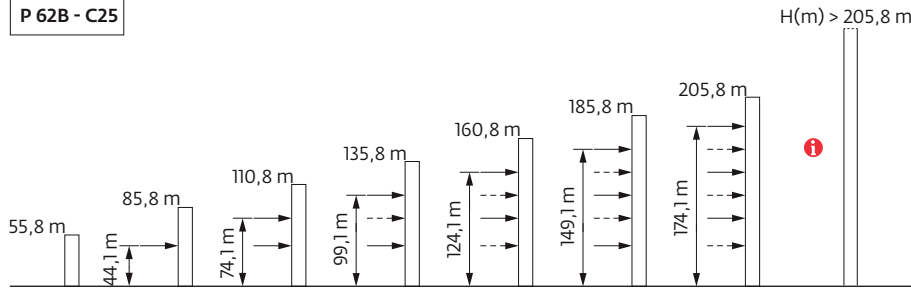
2 m  
 40 m → 75 m



Ancrages / Verankerungen / Anchorages / Anclajes / Ancoraggi  
 Ancoragem / Анкера









D25 

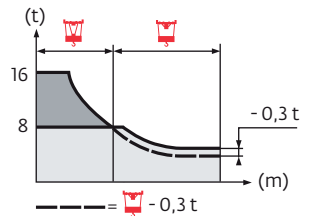
P 62B - C25











Courbes de charges / Lastkurven / Load curves / Curvas de cargas / Curve di carico  
 Curvas de carga / Кривые нагрузок



75 m	2,7	▶	19,9	22	25	27	30	32	35	35,9	37	40	42	45	47	50	52	55	57	60	62	65	67	70	72	75	m
			16	14,2	12,2	11,1	9,7	9	8	8	7,7	7	6,5	6	5,6	5,2	4,9	4,5	4,3	4	3,8	3,5	3,4	3,1	3	2,8	t
70 m	2,7	▶	21	22	25	27	30	32	35	37,1	38,2	40	42	45	47	50	52	55	57	60	62	65	67	70	m		
			16	15,2	13	11,9	10,4	9,6	8,6	8	8	7,5	7,1	6,5	6,1	5,6	5,4	5	4,7	4,4	4,2	3,9	3,7	3,5	t		
65 m	2,7	▶	21,1	22	25	27	30	32	35	37,4	38,5	40	42	45	47	50	52	55	57	60	62	65	m				
			16	15,2	13,1	12	10,5	9,7	8,7	8	8	7,6	7,2	6,6	6,2	5,7	5,4	5	4,8	4,5	4,3	4	t				
60 m	2,7	▶	21,6	22	25	27	30	32	35	37	38,5	39,6	42	45	47	50	52	55	57	60	m						
			16	15,7	13,5	12,3	10,9	10,1	9	8,4	8	8	7,4	6,8	6,5	6	5,7	5,3	5	4,7	t						
55 m	2,7	▶	22	25	27	30	32	35	37	39,1	40,3	42	45	47	50	52	55	m									
			16	13,8	12,6	11,1	10,3	9,2	8,6	8	8	7,6	7	6,6	6,1	5,8	5,4	t									
50 m	2,7	▶	22,2	25	27	30	32	35	37	39,6	40,8	42	45	47	50	m											
			16	14	12,7	11,2	10,4	9,3	8,7	8	8	7,7	7,1	6,7	6,2	t											
45 m	2,7	▶	22,5	25	27	30	32	35	37	40,1	41,3	42	45	m													
			16	14,2	12,9	11,4	10,6	9,5	8,9	8	8	7,8	7,2	t													
40 m	2,7	▶	23,3	25	27	30	32	35	37	40	m																
			16	14,8	13,5	11,9	11	9,9	9,3	8,4	t																



75 m	2,7	▶								37,4	40	42	45	47	50	52	55	57	60	62	65	67	70	72	75	m
										8	7,4	6,9	6,4	6	5,6	5,3	4,9	4,7	4,4	4,2	3,9	3,8	3,5	3,4	3,2	t
70 m	2,7	▶								39,7	42	45	47	50	52	55	57	60	62	65	67	70	m			
										8	7,5	6,9	6,5	6	5,8	5,4	5,1	4,8	4,6	4,3	4,1	3,9	t			
65 m	2,7	▶								40,1	42	45	47	50	52	55	57	60	62	65	m					
										8	7,6	7	6,6	6,1	5,8	5,4	5,2	4,9	4,7	4,4	t					
60 m	2,7	▶								41,3	42	45	47	50	52	55	57	60	m							
										8	7,8	7,2	6,9	6,4	6,1	5,7	5,4	5,1	t							
55 m	2,7	▶								42	45	47	50	52	55	m										
										8	7,4	7	6,5	6,2	5,8	t										
50 m	2,7	▶								42,5	45	47	50	m												
										8	7,5	7,1	6,6	t												
45 m	2,7	▶								43,1	45	m														
										8	7,6	t														
40 m	2,7	▶								40	m															
										8	t															

Lest de base / Grundballast / Base ballast / Lastre de base / Zavorra di base  
 Lastro da base / Базовый Балласт

2 m	V 60A	H (m)	57,5	54,2	50,9	45,9	40,9	35,9	30,9	25,9	20,9	15,9		
		(t)	108	96	96	84	84	84	84	84	84	84	84	
		(t)	-	132	108	84	84	84	84	84	84	84	84	
	V 63A	H (m)	61	57,6	56	54,3	51	46	41	36	31	26	21	16
		(t)	132	120	108	108	96	84	84	84	84	84	84	84
		(t)	-	180	156	144	120	84	84	84	84	84	84	84
	ZX 6830	H (m)	53,7	50,3	47	42	37	32	27	22	17			
		(t)	101	91	91	81	81	81	71	71	71			
		(t)	131	101	91	81	81	81	71	71	71			

Poids de flèche & lest de contre-flèche / Auslegergewicht & Gegenauslegerballast / Jib weight & counter-jib ballast / Peso de flecha y lastre de contra-flecha / Peso del braccio & zavorra di contro-braccio / Peso da lança & lastro da contra lança  
 Вес стрелы и балласт контр-стрелы

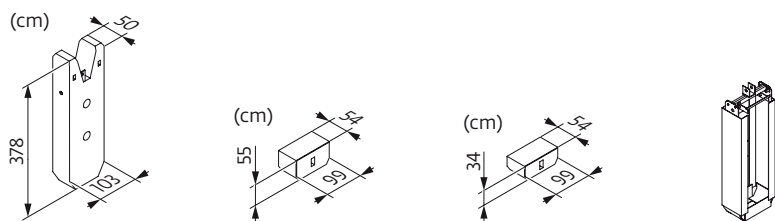
	(kg) (+/- 5%)	75 LVF				100 LVF			
		4200 kg	700 kg		(kg)	4200 kg	700 kg		(kg)
75 m	18180	5	4	1	24162	5	3	1	23462
70 m	17070	5	0	0	21000	4	5	1	20662
65 m	16650	4	3	1	19262	4	3	1	19262
60 m	15610	4	0	1	17162	3	5	1	16462
55 m	15260	3	3	1	15062	3	3	1	15062
50 m	14710	5	5	1	24862	5	4	1	24162
45 m	13650	5	0	1	21362	4	5	1	20662
40 m	12540	4	2	1	18562	4	1	1	17862

CA - 4200 kg

CB - 700 kg



CAB - 700 kg

362 kg

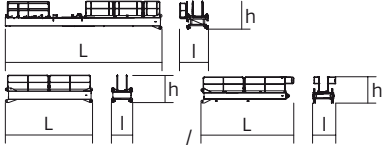
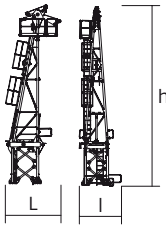
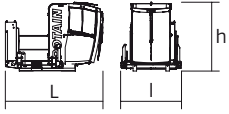
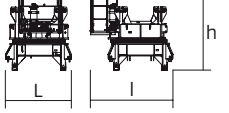
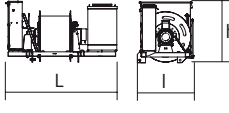
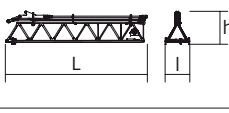
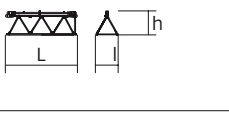
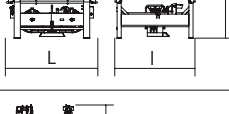
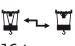
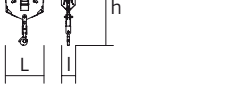
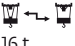


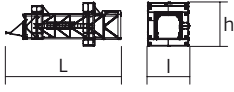


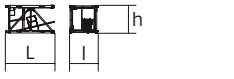
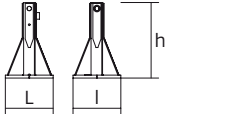
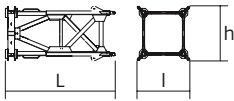
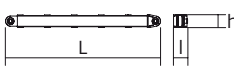
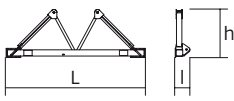
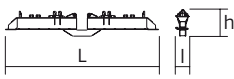

Encombremet et poids / Abmessungen und Gewicht / Dimensions and weight / Dimensiones y peso / Ingombro e peso  
dimensões e pesos / габаритные размеры и вес

Partie tournante / Drehender Kranteil / Slewing crane part / Parte giratoria

Parte rotante / Parte rotativa / Поворотная часть :  75 m -  75 LVF



Partie tournante / Drehender Kranteil / Slewing crane part Parte giratoria / Parte rotante / Parte rotativa Поворотная часть	L (m)	I (m)	h (m)	kg (+/- 5%)		
Contre-flèche / Gegenausleger Counter-jib / Contra-flecha Controbraccio / Contra-lança Контр-стрела		10,94 6,22 6,39	1,93 1,5 1,5	1,75 1,75 1,75	3755 2110 1560	
Porte-flèche / Auslegerträger Cathead / Porta-flecha Cuspide / Suporte de lança Оголовок		3,66	2,78	11,95	8650	
Cabine / Kabine Cab / Cabina Cabina / Cabina Кабина		Ultra View	3,56	2,21	2,51	1550
Pivot / Krankopf Towerhead / Pivote Portaralla / Pivot Секция поворотной части		□ 2 m	2,29	2,46	2,4	8100
Treuil de levage (+ câble) / Hubwerk (+ Seil) Hoisting winch (+ rope) / Mecanismo de elevación (+ cabo) Argano di sollevamento (+ fune) Guincho de elevação (+ cabo) Подъемная лебедка (+ канатом)		75 LVF 100 LVF	2,48 3,09	1,63 1,6	1,4 1,88	3650 4800
Élément de flèche / Auslegerelement Jib section / Elemento de flecha Elemento di braccio / Elemento de lança Секция стрелы		① 6 DVF ② ③ ⑥	10,27 10,27 10,22 10,21	1,81 1,6 1,6 1,6	1,93 1,78 1,76 1,75	2360 2225 1850 1475
Élément de flèche / Auslegerelement Jib section / Elemento de flecha Elemento di braccio / Elemento de lança Секция стрелы		④ ⑤ ⑦ ⑧ ⑨	5,27 5,27 5,2 5,16 5,15	1,6 1,6 1,6 1,6 1,6	1,75 1,51 1,47 1,45 1,43	855 820 595 420 370
Chariot / Laufkatze Trolley / Carrello Carro / Carro-distribuidor Тележка		 16 t	2,21	1,94	1,16	620
Moufle / Hubflasche Pulley block / Aparejo Bozzello / Cadernal Полиспаст		 16 t	1,05	0,42	2,76	230

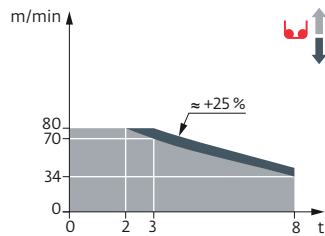
Pyłóne / Kranturm / Crane tower Mástil / Torre / Torre Башня крана		L (m)	l (m)	h (m)	kg (+/- 5%)	
Cage de télescopage / Teleskopwagen Telescopic cage / Jaula de telescopaje Gabbia di telescopaggio / Gaiola de telescopagem для телескопирования крана		∇2 m	11,5	4,21	4,36	8235
K 639B		∇2 m	10,23	2,07	2,03	5290
KR 649A K 639A		∇2 m ∇2 m	5,23 5,23	2,1 2,07	2,08 2,03	3250 2805
K 639C		∇2 m	3,57	2,07	2,03	1985
Pieds de scellement / VerankerungsfüÙe Fixing angles / Pie de empotramiento Montante da annegare / Angulos fixadores анкера		P 62B	0,65	0,65	1,27	295
Mât-châssis / Grundmasteinheit Basic mast unit / Tramo-chasis Elemento base / Tramo-chassis Мачта для крепления к шасси		V 60A V 63A	5,01 10,02	2,41 2,41	2,41 2,41	4390 7485
Haubans / Mastabstütungen Struts / Tornapuntas Puntoni / Escoras Растяжка		V 60A V 63A	4,51 4,51	0,29 0,33	0,29 0,33	420 515
Sommier / Unterwagenhälfte Half-bearer / Testero Testata / Estrutura base Траверса		V 60A V 63A	6,7 6,7	0,7 0,7	2,31 2,31	1600 1850
Bras de croix / Fundamentkreuzträger Cross girder / Brazo en cruz Braccio croce / Braço da cruz Поперечная балка		ZX 6830	9,1	0,76	1,48	5445
Bras de croix / Fundamentkreuzträger Cross girder / Brazo en cruz Braccio croce / Braço da cruz Поперечная балка		ZX 6830	9,1	1,12	1,1	5265

Mécanismes / Triebwerke / Mechanisms / Mecanismos / Meccanismi  
 Mecanismos / Механизмы

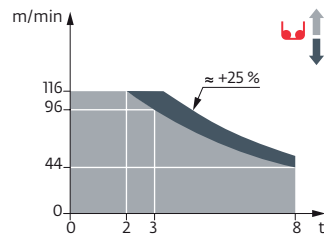
400 V - 50 Hz											ch - PS hp	kW	
	<b>75 LVF 40 Optima</b>	m/min	34	44	70	80	17	22	35	40	75	55	553 m
		t	8	6	3	2	16	12	6	4			
	<b>100 LVF 40 Optima</b>	m/min	44	56	96	116	22	28	48	58	100	75	1009 m
		t	8	6	3	2	16	12	6	4			
	<b>6 DVF 6</b>	m/min	0 → 42 (16 t) 0 → 84 (8 t) 0 → 100 (4 t)							5,5	4		
	<b>RVF 172 Optima+</b>	tr/min U/min rpm	0 → 0,7							2 x 10	2 x 7,5		
	<b>V 60A</b> RT 544 A1 - 2V R ≥ 13 m	m/min	13,5 - 27							4 x 7	4 x 5,2		
	<b>V 63A</b> RT 664 A2B - 2V	m/min	16 - 32							6 x 7	6 x 5,2		
	<b>ZX 6830</b> RT 664 A2B - 2V	m/min	16 - 32							6 x 7	6 x 5,2		




















IEC 60204-32	kVA
400 V (+10% -10%) 50 Hz	75 LVF : 84 kVA 100 LVF : 104 kVA

75 LVF 40 Optima



100 LVF 40 Optima



	FR	DE	EN	ES	IT	PT	RU
	Profil de vent suivant EN 14439 C25-D25	Windbedingungen gemäß EN 14439 C25-D25	Wind conditions according to EN 14439 C25-D25	Conformidad de los condiciones de viento EN 14439 C25-D25	Condizioni del vento secondo EN 14439 C25-D25	Perfil de vento conforme EN 14439 C25-D25	Ветровой режим в соответствии с EN 14439 C25-D25
	Équipements standards	Standardausrüstungen	Standard equipment	Equipamiento de serie	Equipaggiamento standard	Equipamento de série	Стандартное оборудование
	Équipements optionnels	Sonderausrüstungen	Options	Equipamiento opcional	Equipaggiamento in opzione	Equipamento opcional	Дополнительное оборудование (опция)
	Réactions en service	Reaktionskräfte in Betrieb	Reactions in service	Reacciones en servicio	Reazioni in servizio	Reacções em serviço	Реакция при работе
	Réactions hors service	Reaktionskräfte außer Betrieb	Reactions out of service	Reacciones fuera de servicio	Reazioni fuori servizio	Reacções fora de serviço	Реакция в покое
	Poids à vide sans lest avec flèche et hauteur maximum	Gawicht ohne Last, ohne Ballast, mit Ausleger und max. Höhe	Weight without load, without ballast, with jib and max. height	Peso en vacío sin lastre, con flecha y altura máxima	Peso a vuoto, senza zavorra, con braccio e altezza massimi.	Peso em vazio sem lastro com lança e altura máxima.	Вес пустого, без балласта, со стрелой, максимальной высоты.
	Poids de flèche	Auslegergewicht	Jib weight	Peso de flecha	Peso del braccio	Peso da lança	вес стрелы
	Poids total du lest	Ballast-Gesamtgewicht	Total ballast weight	Peso total del lastre	Peso totale della zavorra	Peso total do lastro	Общий вес балласта
	Camion 13,4 m	Lkw 13,4 m	Lorry 13,4 m	Camión 13,4 m	Camion 13,4 m	Camião 13,4 m	Ррузовой автомобиль 13,4 м
	Conteneur High Cube 40', et/ou Flat Rack 20'	Container High Cube 40', und/oder Flat Rack 20'	Container High Cube 40', and/or Flat Rack 20'	Contenedor High Cube 40', y/o Flat Rack 20'	Container High Cube 40', e/o Flat Rack 20'	Contentor High Cube 40', e/ou Flat Rack 20'	40-футовый контейнер повышенной вместимости High Cube, и/или 20-футовая открытая платформа Flat Rack
	Cadre d'ancrage serré	Fester Verankerungsrahmen	Tightened anchorage frame	Marco de anclaje de apriete	Quadro di ancoraggio stretto	Quadro de amarração apertado	Прикрепленная анкерная рама
	Cadre d'ancrage desserré	Losser Verankerungsrahmen	Loosened anchorage frame	Marco de anclaje de desapriete	Quadro di ancoraggio allentato	Quadro de amarração solto	Отсоединенная анкерная рама
	Levage	Heben	Hoisting	Elevación	Sollevamento	Elevação	Подъем
	Distribution	Katzfahren	Trolleying	Distribución	Distribuzione	Distribuição	Перемещение по стреле
	Orientation	Schwenken	Slewing	Orientación	Rotazione	Rotação	Поворот
	Translation	Kranfahren	Travelling	Traslación	Traslazione	Translação	Перемещение крана
	Puissance requise	Erforderliche Leistung	Required power	Potencia Necesaria	Potenza richiesta	Potência Necessária	Потребляемая мощность
	Nous consulter	Auf Anfrage	Consult us	Consultarnos	Consultateci	Consultar-nos	Проконсультируйтесь у нас
	Document commercial non contractuel. Pour toute information technique se référer à la notice correspondante.	Unverbindliches Vertriebsdokument. Für technische Informationen, siehe die entsprechenden Anweisungen.	This commercial document is not legally binding. For any technical information, please refer to the corresponding instructions.	Documento commercial no contractual. Para cualquier información técnica, ver la noticia correspondiente.	Documento commerciale non vincolante, per tutte le informazioni tecniche fare riferimento al catalogo istruzioni.	Documento comercial não contratual. Para qualquer informação técnica complementar consultar as respectivas instruções.	Этот коммерческий документ не является юридически обязательным. Для получения технической информации, см. соответствующие инструкции.



Grove Maniowoc National Crane Potain

**Americas**  
**Manitowoc, Wisconsin, USA**  
 Tel: +1 920 684 6621  
 Fax: +1 920 683 6277

**Shady Grove, Pennsylvania, USA**  
 Tel: +1 717 597 8121  
 Fax: +1 717 597 4062

**Europe, Middle East, Africa**  
**Dardilly, France**  
 Tel: +33 (0)4 72 18 20 20  
 Fax: +33 (0)4 72 18 20 00

**China**  
**Shanghai, China**  
 Tel: +86 21 6457 0066  
 Fax: +86 21 6457 4955

**Greater Asia-Pacific**  
**Singapore**  
 Tel: +65 6264 1188  
 Fax: +65 6862 4040

[www.manitowoccranes.com](http://www.manitowoccranes.com)