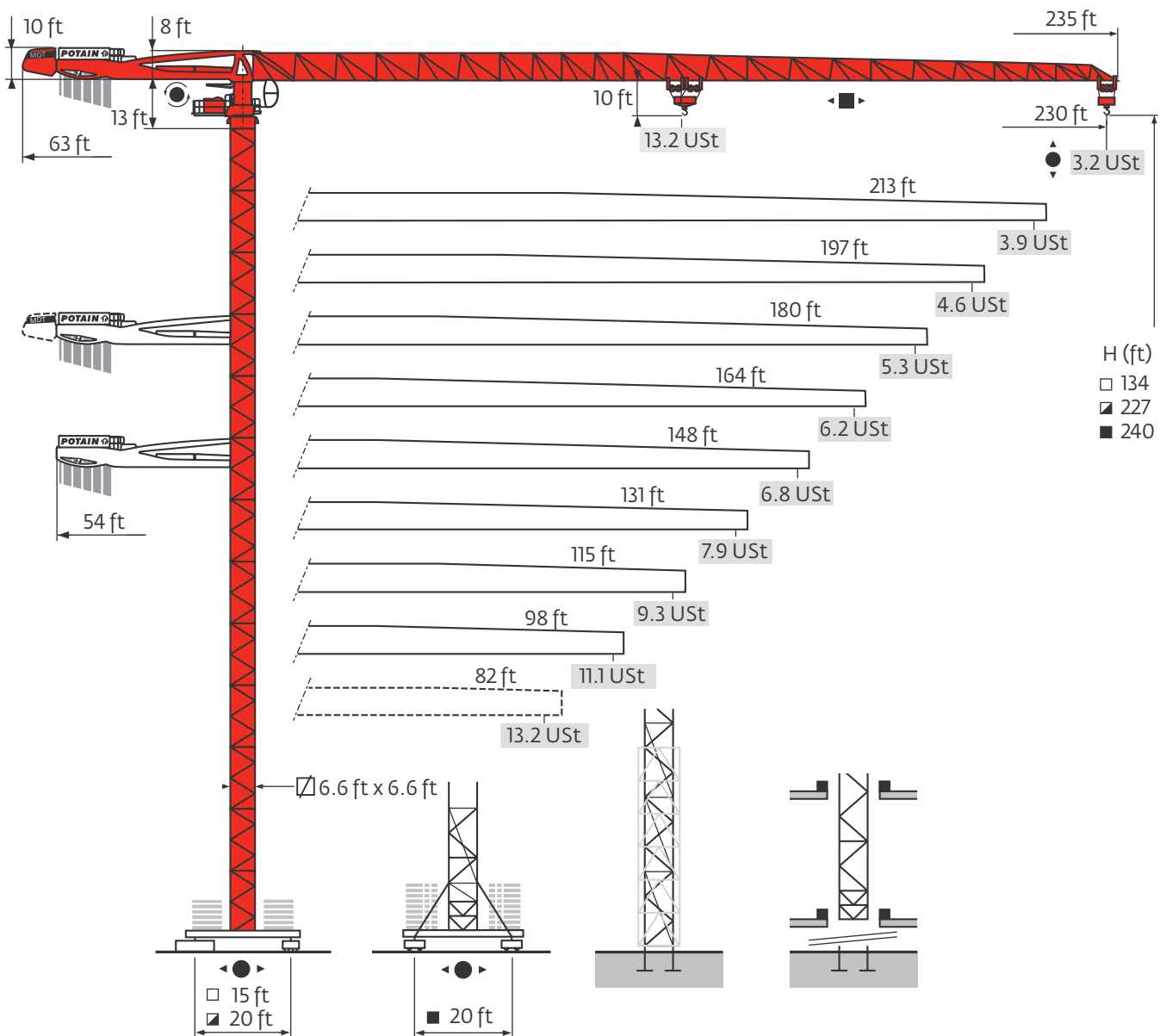


Potain MDT 308

Data Sheet

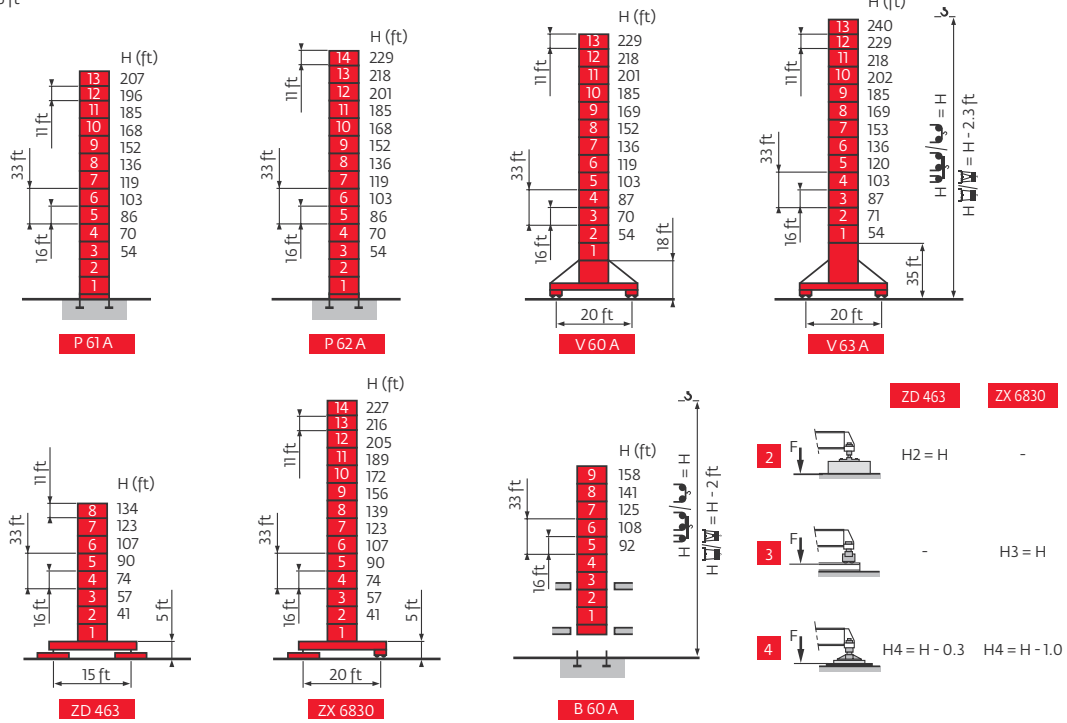
FEM 1.001-A3



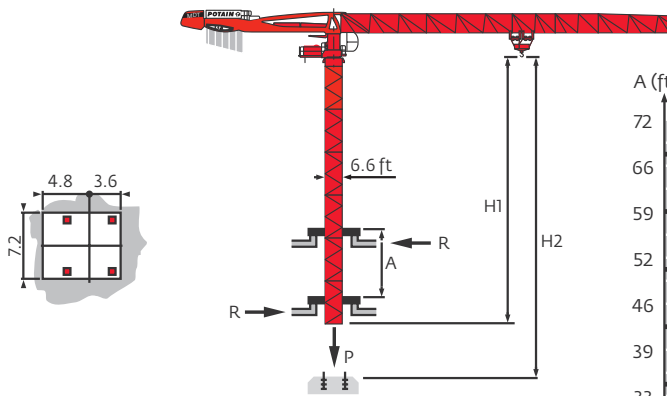
Values have been rounded

Mast

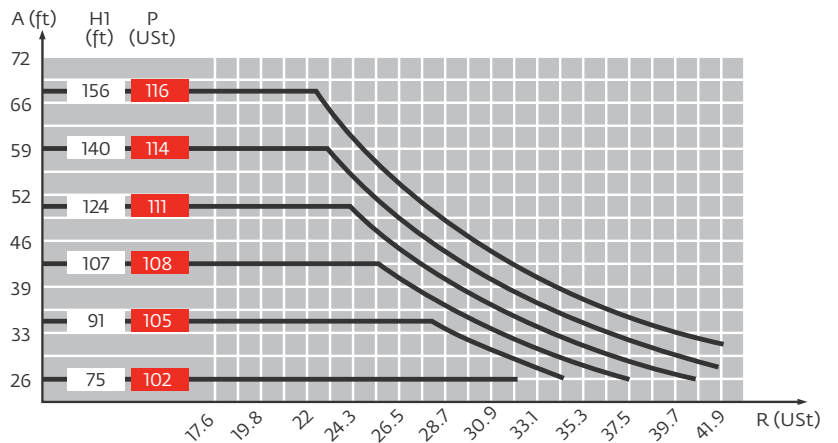
6.6 ft



Climbing crane









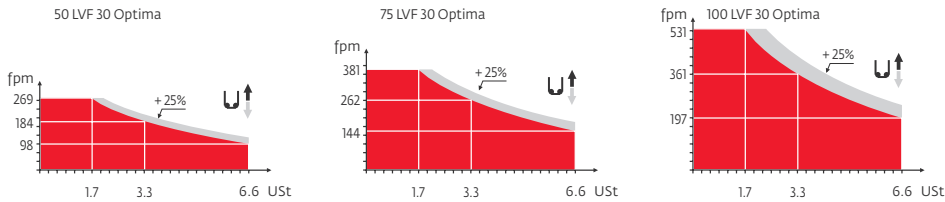
B 60 A








Ht	Traveling maximum height
A	Distance between collars
H1	Crane height
P	Crane weight (in service)
R	Horizontal reaction

Mechanisms

		☀						☁						hp	kW		
▲	50 LVF 30 Optima	fpm	9	33	98	131	184	269	4	16	49	66	92	135	50	37	1106 ft
	USt	6.6	6.6	6.6	5	3.3	1.7	13.2	13.2	13.2	9.9	6.6	3.3				
▲	75 LVF 30 Optima	fpm	12	144	184	262	381	6	72	92	131	190	75	55	2513 ft		
	USt	6.6	5	3.3	1.7	13.2	9.9	6.6	3.3								
▲	100 LVF 30 Optima	fpm	0	197	262	361	531	0	98	131	180	266	100	75	3087 ft		
	USt	6.6	5	3.3	1.7	13.2	9.9	6.6	3.3								
●	RVF162 Optima+	rpm	0 - 0.8												2 x 7.5	2 x 5.5	
◀ ▶	6 DVF 4	fpm	0 - 164 (13.2 USt) - 0 - 328 (6.6 USt) - 0 - 394 (3.3 USt)												5.5	4	
	RT 544 A1 - 2V R ≥ 13 m	fpm	44 - 89												4 x 7	4 x 5.2	
																	
	RT 664 A2B - 2V	fpm	52 - 105												6 x 7	6 x 5.2	
CEI 38  IEC 38		kVA															
480 V (+6% -10%) 60 Hz		50 LVF : 75 kVA - 75 LVF : 100 kVA - 100 LVF : 125 kVA															



-  Hoisting
-  Trolleying
-  Slewing
-  Traveling
-  Consult us

Constant improvement and engineering progress make it necessary that we reserve the right to make specification, equipment and price changes without notice. Illustrations shown may include optional equipment and accessories, and may not include all standard equipment.

Regional Headquarters

Americas
Manitowoc, Wisconsin, USA
Tel: +1 920 684 6621
Fax: +1 920 683 6277

Shady Grove, Pennsylvania, USA
Tel: +1 717 597 8121
Fax: +1 717 597 4062

Europe, Middle East, Africa
Ecully, France
Tel: +33 472 18 2020
Fax: +33 472 18 2000

Asia - Pacific
Shanghai, China
Tel: +86 21 6457 0066
Fax: +86 21 6457 4955

Potain MDT 308
Code 08-019-2M-1208



www.manitowoc.com