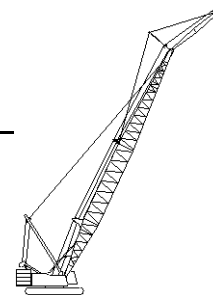




Liftcrane Jib Capacities

New York City Code
Jib No. 123 With 12 Ft. 6 in. Strut On
Boom No. 82LR
184,600 Lb. Crane Counterweight
44,000 Lb. Carbody Counterweight
360 Degree Rating

Meets
ANSI B30.5
Requirements



999 SERIES 2

LIFTING CAPACITIES: Chart supplements boom capacity chart **No. 8321-A**. Lifting capacities for various boom lengths, jib lengths and jib operating radii are for freely suspended loads and do not exceed 75% of a static tipping load for boom and jib length combinations thru 250 Ft. and New York City criteria of 1.4 factor applied to total machine moment for boom and jib length combinations 260 Ft. on up. Capacities based on structural competence are denoted by an asterisk (*).

Weight of all load blocks, hooks, weight ball, slings, hoist lines, etc., beneath boom and jib point sheaves, is considered part of jib load. Boom and jib are not to be lowered beyond radii where combined weights are greater than rated capacity. Where no capacity is shown, operation is not intended or approved.

OPERATING CONDITIONS: Machine to operate in a level position on a firm uniformly supporting surface with gantry up. Refer to boom rigging **No. 196100**, jib assembly **No. 196264** and Wire Rope Specification chart **No. 8315-A**. Crane operator judgment must be used to allow for dynamic load effects of swinging, hoisting or lowering, travel, wind conditions, as well as adverse operating conditions and physical machine depreciation. Refer to operators manual for operating guidelines.

MACHINE TRAVEL: Machine to travel on a firm, level and uniformly supporting surface and boom within boom angle

range shown in capacity chart. Refer to Maximum Allowable Travel Specification chart **No. 8316-A**.

OPERATING RADIUS: Operating radius is horizontal distance from axis of rotation to center of vertical hoist line or load block. Boom angle is angle between horizontal and centerline of boom butt and inserts, and is an indication of operating radius. In all cases, operating radius shall govern capacity.

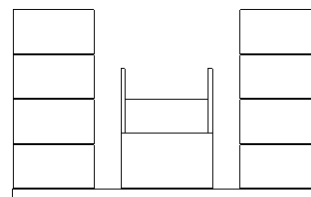
JIB POINT ELEVATION: Jib point elevation is vertical distance from ground level to centerline of jib point shaft.

MACHINE EQUIPMENT: Machine equipped with 28 Ft. 2 in. crawlers, 48 in. treads, 10 Ft. 3 in. retractable gantry, 30 Ft. live mast, 20 part boom hoist reeving, boom support straps, 184,600 Lb. crane counterweight and two 22,000 Lb. carbody counterweights.

Maximum capacity on 26 mm wire rope is 29,500 Lbs. per line (20,000 Lbs. on 26 mm or 1 in. wire rope when auxiliary drum is used).

Maximum Boom and Jib Lengths Lifted Unassisted			
Over End of Blocked Crawlers		Over Side of Crawlers	
Boom Length	Jib No. 123	Boom Length	Jib No. 123
320 Ft.	—	290 Ft.	—
310 Ft.	—	280 Ft.	30 Ft.
300 Ft.	40 Ft.	270 Ft.	50 Ft.
290 Ft.	60 Ft.	260 Ft.	60 Ft.

Load block, hook and weight ball on ground at start.



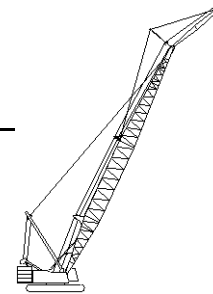
184,600 Lb. Crane Counterweight
8 Side Boxes - 1 Center Box



Liftcrane Jib Capacities

New York City Code
Jib No. 123 With 12 Ft. 6 in. Strut On
Boom No. 82LR
184,600 Lb. Crane Counterweight
44,000 Lb. Carbody Counterweight
360 Degree Rating

Meets
ANSI B30.5
Requirements



999 SERIES 2

30 Ft. JIB

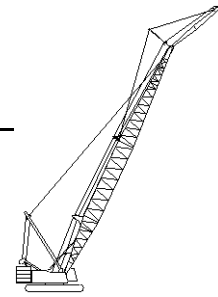
Jib Oper. Rad. Feet	0 Degree Offset			10 Degree Offset			20 Degree Offset			Jib Oper. Rad. Feet
	Boom Ang. Deg.	Jib Point Elev. Feet	Jib Capacity Pounds	Boom Ang. Deg.	Jib Point Elev. Feet	Jib Capacity Pounds	Boom Ang. Deg.	Jib Point Elev. Feet	Jib Capacity Pounds	
120 Ft. BOOM										
35	79.3	156.7	40,000 *							35
40	77.4	155.6	40,000 *	79.3	155.0	40,000*				40
45	75.4	154.3	40,000 *	77.3	153.7	40,000*	79.2	152.2	40,000*	45
50	73.5	152.9	40,000 *	75.4	152.2	40,000*	77.2	150.7	40,000*	50
55	71.5	151.2	40,000 *	73.4	150.6	40,000*	75.2	149.0	40,000*	55
60	69.5	149.4	40,000 *	71.3	148.7	40,000*	73.1	147.2	40,000*	60
65	67.4	147.3	40,000 *	69.3	146.6	40,000*	71.0	145.1	40,000*	65
70	65.4	145.1	40,000 *	67.2	144.4	40,000*	68.9	142.8	40,000*	70
75	63.2	142.6	40,000 *	65.1	141.9	40,000*	66.8	140.3	40,000*	75
80	61.1	139.9	40,000 *	62.9	139.1	40,000*	64.6	137.5	40,000*	80
85	58.9	136.9	40,000 *	60.7	136.1	40,000*	62.3	134.4	38,700*	85
90	56.6	133.6	40,000 *	58.4	132.9	40,000*	60.1	131.1	37,400*	90
100	51.9	126.2	40,000 *	53.7	125.4	40,000*	55.2	123.6	35,100*	100
110	46.9	117.4	40,000 *	48.6	116.6	39,100*	50.1	114.6	33,200*	110
120	41.4	106.9	37,900	43.1	105.9	36,500*	44.4	103.7	31,700*	120
130	35.2	93.9	33,800	36.8	92.7	34,000				130
140	27.8	77.0	30,300	29.3	75.6	30,500				140
130 Ft. BOOM										
35	80.0	166.9	40,000 *							35
40	78.2	165.9	40,000 *	80.0	165.2	40,000*				40
45	76.4	164.7	40,000 *	78.1	164.0	40,000*	79.9	162.5	40,000*	45
50	74.5	163.3	40,000 *	76.3	162.7	40,000*	78.0	161.1	40,000*	50
55	72.7	161.8	40,000 *	74.4	161.1	40,000*	76.1	159.6	40,000*	55
60	70.8	160.1	40,000 *	72.5	159.4	40,000*	74.2	157.8	40,000*	60
65	68.9	158.2	40,000 *	70.6	157.5	40,000*	72.3	155.9	40,000*	65
70	67.0	156.1	40,000 *	68.7	155.4	40,000*	70.4	153.8	40,000*	70
75	65.0	153.8	40,000 *	66.7	153.0	40,000*	68.4	151.4	40,000*	75
80	63.0	151.3	40,000 *	64.8	150.5	40,000*	66.4	148.9	40,000*	80
85	61.0	148.5	40,000 *	62.7	147.8	40,000*	64.3	146.1	39,900*	85
90	59.0	145.5	40,000 *	60.6	144.8	40,000*	62.2	143.1	38,600*	90
100	54.7	138.8	40,000 *	56.3	138.0	40,000*	57.8	136.2	36,300*	100
110	50.2	130.9	40,000 *	51.8	130.1	40,000*	53.2	128.2	34,300*	110
120	45.3	121.6	37,600	46.9	120.7	37,900	48.3	118.6	32,700*	120
130	40.0	110.5	33,600	41.6	109.5	33,800	42.8	107.2	31,300*	130
140	34.0	96.9	30,100	35.5	95.7	30,300				140
150	26.9	79.4	27,100							150



Liftcrane Jib Capacities

New York City Code
Jib No. 123 With 12 Ft. 6 in. Strut On
Boom No. 82LR
184,600 Lb. Crane Counterweight
44,000 Lb. Carbody Counterweight
360 Degree Rating

Meets
ANSI B30.5
Requirements



999 SERIES 2

30 Ft. JIB

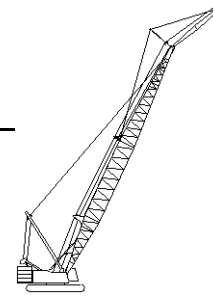
Jib Oper. Rad. Feet	0 Degree Offset			10 Degree Offset			20 Degree Offset			Jib Oper. Rad. Feet
	Boom Ang. Deg.	Jib Point Elev. Feet	Jib Capacity Pounds	Boom Ang. Deg.	Jib Point Elev. Feet	Jib Capacity Pounds	Boom Ang. Deg.	Jib Point Elev. Feet	Jib Capacity Pounds	
140 Ft. BOOM										
35	80.6	177.1	40,000 *							35
40	78.9	176.1	40,000 *	80.6	175.4	40,000*				40
45	77.2	175.0	40,000 *	78.8	174.3	40,000*	80.5	172.8	40,000*	45
50	75.5	173.7	40,000 *	77.1	173.0	40,000*	78.7	171.5	40,000*	50
55	73.7	172.3	40,000 *	75.4	171.6	40,000*	77.0	170.1	40,000*	55
60	72.0	170.7	40,000 *	73.6	170.0	40,000*	75.2	168.4	40,000*	60
65	70.2	168.9	40,000 *	71.8	168.2	40,000*	73.4	166.6	40,000*	65
70	68.4	166.9	40,000 *	70.0	166.2	40,000*	71.6	164.6	40,000*	70
75	66.6	164.8	40,000 *	68.2	164.1	40,000*	69.7	162.5	40,000*	75
80	64.7	162.5	40,000 *	66.4	161.7	40,000*	67.9	160.1	40,000*	80
85	62.9	159.9	40,000 *	64.5	159.2	40,000*	66.0	157.5	40,000*	85
90	61.0	157.2	40,000 *	62.6	156.4	40,000*	64.0	154.7	39,700*	90
100	57.0	151.0	40,000 *	58.6	150.2	40,000*	60.0	148.5	37,400*	100
110	52.9	143.8	40,000 *	54.5	143.0	40,000*	55.9	141.1	35,400*	110
120	48.6	135.5	37,300	50.1	134.6	37,600	51.4	132.6	33,600*	120
130	43.9	125.7	33,300	45.4	124.7	33,500	46.6	122.5	32,200*	130
140	38.8	114.0	29,800	40.2	113.0	30,100	41.3	110.6	30,200	140
150	33.0	99.8	26,900	34.3	98.6	27,100				150
160	26.0	81.7	24,300							160
150 Ft. BOOM										
40	79.5	186.3	40,000 *							40
45	77.9	185.3	40,000 *	79.5	184.6	40,000*	81.0	183.1	40,000*	45
50	76.3	184.0	40,000 *	77.8	183.4	40,000*	79.4	181.8	40,000*	50
55	74.6	182.7	40,000 *	76.2	182.0	40,000*	77.7	180.5	40,000*	55
60	73.0	181.2	40,000 *	74.6	180.5	40,000*	76.1	178.9	40,000*	60
65	71.3	179.5	40,000 *	72.9	178.8	40,000*	74.4	177.2	40,000*	65
70	69.6	177.7	40,000 *	71.2	177.0	40,000*	72.7	175.4	40,000*	70
75	67.9	175.7	40,000 *	69.5	175.0	40,000*	71.0	173.4	40,000*	75
80	66.2	173.5	40,000 *	67.8	172.8	40,000*	69.2	171.1	40,000*	80
85	64.5	171.1	40,000 *	66.0	170.4	40,000*	67.4	168.7	40,000*	85
90	62.7	168.6	40,000 *	64.2	167.8	40,000*	65.6	166.2	40,000*	90
100	59.1	162.9	40,000 *	60.6	162.1	40,000*	61.9	160.4	38,500*	100
110	55.3	156.3	40,000 *	56.8	155.5	40,000*	58.1	153.6	36,400*	110
120	51.3	148.6	37,000	52.8	147.8	37,400	54.1	145.9	34,600*	120
130	47.1	139.8	33,000	48.5	138.9	33,300	49.8	136.9	33,100*	130
140	42.6	129.6	29,600	44.0	128.6	29,800	45.1	126.3	30,000	140
150	37.6	117.4	26,600	39.0	116.3	26,800	40.0	113.8	27,000	150
160	32.0	102.7	24,000	33.3	101.4	24,200				160
170	25.3	83.9	21,800							170



Liftcrane Jib Capacities

New York City Code
 Jib No. 123 With 12 Ft. 6 in. Strut On
 Boom No. 82LR
 184,600 Lb. Crane Counterweight
 44,000 Lb. Carbody Counterweight
 360 Degree Rating

Meets
 ANSI B30.5
 Requirements



999 SERIES 2

30 Ft. JIB

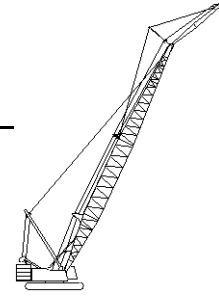
Jib Oper. Rad. Feet	0 Degree Offset			10 Degree Offset			20 Degree Offset			Jib Oper. Rad. Feet
	Boom Ang. Deg.	Jib Point Elev. Feet	Jib Capacity Pounds	Boom Ang. Deg.	Jib Point Elev. Feet	Jib Capacity Pounds	Boom Ang. Deg.	Jib Point Elev. Feet	Jib Capacity Pounds	
160 Ft. BOOM										
40	80.1	196.5	40,000*							40
45	78.5	195.5	40,000*	80.0	194.8	40,000*				45
50	77.0	194.4	40,000*	78.5	193.7	40,000*	80.0	192.1	40,000*	50
55	75.5	193.1	40,000*	76.9	192.4	40,000*	78.4	190.8	40,000*	55
60	73.9	191.6	40,000*	75.4	191.0	40,000*	76.8	189.4	40,000*	60
65	72.3	190.1	40,000*	73.8	189.4	40,000*	75.2	187.8	40,000*	65
70	70.8	188.3	40,000*	72.2	187.6	40,000*	73.6	186.0	40,000*	70
75	69.2	186.5	40,000*	70.6	185.7	40,000*	72.0	184.1	40,000*	75
80	67.5	184.4	40,000*	69.0	183.7	40,000*	70.4	182.1	40,000*	80
85	65.9	182.2	40,000*	67.4	181.5	40,000*	68.7	179.8	40,000*	85
90	64.3	179.8	40,000*	65.7	179.1	40,000*	67.0	177.4	40,000*	90
100	60.9	174.5	40,000*	62.3	173.7	40,000*	63.6	172.0	39,500*	100
110	57.4	168.4	40,000*	58.8	167.6	40,000*	60.0	165.8	37,400*	110
120	53.7	161.4	36,500	55.1	160.5	36,900	56.3	158.6	35,600*	120
130	49.9	153.3	32,500	51.2	152.4	32,800	52.4	150.4	33,100	130
140	45.8	144.1	29,100	47.1	143.1	29,300	48.2	141.0	29,600	140
150	41.4	133.3	26,100	42.7	132.3	26,300	43.7	130.0	26,500	150
160	36.6	120.7	23,500	37.8	119.6	23,700				160
170	31.1	105.5	21,300	32.3	104.1	21,400				170
180	24.6	86.1	19,300							180



Liftcrane Jib Capacities

New York City Code
Jib No. 123 With 12 Ft. 6 in. Strut On
Boom No. 82LR
184,600 Lb. Crane Counterweight
44,000 Lb. Carbody Counterweight
360 Degree Rating

Meets
ANSI B30.5
Requirements



999 SERIES 2

30 Ft. JIB

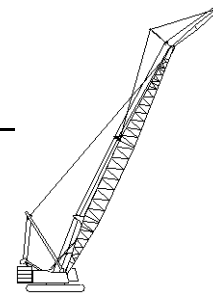
Jib Oper. Rad. Feet	0 Degree Offset			10 Degree Offset			20 Degree Offset			Jib Oper. Rad. Feet
	Boom Ang. Deg.	Jib Point Elev. Feet	Jib Capacity Pounds	Boom Ang. Deg.	Jib Point Elev. Feet	Jib Capacity Pounds	Boom Ang. Deg.	Jib Point Elev. Feet	Jib Capacity Pounds	
170 Ft. BOOM										
40	80.6	206.6	40,000 *							40
45	79.1	205.7	40,000 *	80.5	205.0	40,000*				45
50	77.7	204.6	40,000 *	79.1	203.9	40,000*	80.5	202.4	40,000*	50
55	76.2	203.4	40,000 *	77.6	202.7	40,000*	79.0	201.2	40,000*	55
60	74.7	202.1	40,000 *	76.1	201.4	40,000*	77.5	199.8	40,000*	60
65	73.2	200.6	40,000 *	74.6	199.9	40,000*	76.0	198.3	40,000*	65
70	71.8	198.9	40,000 *	73.1	198.2	40,000*	74.5	196.6	40,000*	70
75	70.2	197.2	40,000 *	71.6	196.4	40,000*	73.0	194.8	40,000*	75
80	68.7	195.2	40,000 *	70.1	194.5	40,000*	71.4	192.9	40,000*	80
85	67.2	193.2	40,000 *	68.6	192.4	40,000*	69.9	190.8	40,000*	85
90	65.6	190.9	40,000 *	67.0	190.2	40,000*	68.3	188.5	40,000*	90
100	62.4	185.9	40,000 *	63.8	185.2	40,000*	65.1	183.4	40,000*	100
110	59.2	180.2	40,000 *	60.5	179.4	40,000*	61.7	177.6	38,300*	110
120	55.8	173.7	36,200	57.1	172.9	36,600	58.3	171.0	36,500*	120
130	52.2	166.3	32,100	53.5	165.4	32,500	54.7	163.5	32,800	130
140	48.5	157.8	28,700	49.8	156.9	29,000	50.9	154.9	29,300	140
150	44.6	148.2	25,800	45.8	147.2	26,000	46.9	145.0	26,200	150
160	40.3	137.0	23,200	41.5	135.9	23,400	42.5	133.6	23,600	160
170	35.6	123.9	20,900	36.8	122.7	21,100				170
180	30.3	108.2	18,900	31.4	106.8	19,100				180
190	24.0	88.2	17,100							190



Liftcrane Jib Capacities

New York City Code
 Jib No. 123 With 12 Ft. 6 in. Strut On
 Boom No. 82LR
 184,600 Lb. Crane Counterweight
 44,000 Lb. Carbody Counterweight
 360 Degree Rating

Meets
 ANSI B30.5
 Requirements



999 SERIES 2

30 Ft. JIB

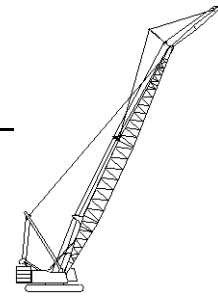
Jib Oper. Rad. Feet	0 Degree Offset			10 Degree Offset			20 Degree Offset			Jib Oper. Rad. Feet
	Boom Ang. Deg.	Jib Point Elev. Feet	Jib Capacity Pounds	Boom Ang. Deg.	Jib Point Elev. Feet	Jib Capacity Pounds	Boom Ang. Deg.	Jib Point Elev. Feet	Jib Capacity Pounds	
180 Ft. BOOM										
40	81.0	216.8	40,000 *							40
45	79.6	215.9	40,000 *	81.0	215.2	40,000*				45
50	78.3	214.9	40,000 *	79.6	214.2	40,000*	80.9	212.6	40,000*	50
55	76.9	213.7	40,000 *	78.2	213.0	40,000*	79.5	211.5	40,000*	55
60	75.5	212.4	40,000 *	76.8	211.7	40,000*	78.1	210.2	40,000*	60
65	74.1	211.0	40,000 *	75.4	210.3	40,000*	76.7	208.7	40,000*	65
70	72.6	209.5	40,000 *	74.0	208.8	40,000*	75.3	207.2	40,000*	70
75	71.2	207.8	40,000 *	72.5	207.1	40,000*	73.8	205.5	40,000*	75
80	69.8	206.0	40,000 *	71.1	205.2	40,000*	72.4	203.6	40,000*	80
85	68.3	204.0	40,000 *	69.6	203.3	40,000*	70.9	201.6	40,000*	85
90	66.8	201.9	40,000 *	68.2	201.1	40,000*	69.4	199.5	40,000*	90
100	63.9	197.2	40,000 *	65.2	196.4	40,000*	66.4	194.7	40,000*	100
110	60.8	191.8	40,000 *	62.1	191.0	40,000*	63.3	189.3	39,300*	110
120	57.6	185.7	35,800	58.9	184.9	36,300	60.0	183.1	36,600	120
130	54.3	178.8	31,800	55.6	178.0	32,200	56.7	176.1	32,500	130
140	50.9	171.0	28,400	52.1	170.2	28,700	53.2	168.2	29,000	140
150	47.3	162.2	25,400	48.5	161.3	25,700	49.5	159.2	25,900	150
160	43.4	152.1	22,800	44.6	151.1	23,100	45.6	148.9	23,300	160
170	39.3	140.6	20,600	40.4	139.5	20,800	41.3	137.0	21,000	170
180	34.7	127.0	18,600	35.8	125.8	18,800				180
190	29.6	110.8	16,800	30.6	109.4	17,000				190
200	23.4	90.2	15,200							200



Liftcrane Jib Capacities

New York City Code
 Jib No. 123 With 12 Ft. 6 in. Strut On
 Boom No. 82LR
 184,600 Lb. Crane Counterweight
 44,000 Lb. Carbody Counterweight
 360 Degree Rating

Meets
 ANSI B30.5
 Requirements



999 SERIES 2

30 Ft. JIB

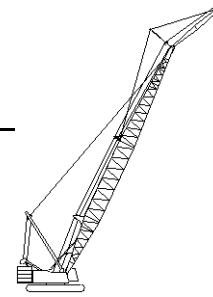
Jib Oper. Rad. Feet	0 Degree Offset			10 Degree Offset			20 Degree Offset			Jib Oper. Rad. Feet
	Boom Ang. Deg.	Jib Point Elev. Feet	Jib Capacity Pounds	Boom Ang. Deg.	Jib Point Elev. Feet	Jib Capacity Pounds	Boom Ang. Deg.	Jib Point Elev. Feet	Jib Capacity Pounds	
190 Ft. BOOM										
45	80.1	226.1	40,000 *							45
50	78.8	225.1	40,000 *	80.1	224.4	40,000*				50
55	77.5	224.0	40,000 *	78.8	223.3	40,000*	80.0	221.7	40,000*	55
60	76.1	222.8	40,000 *	77.4	222.1	40,000*	78.7	220.5	40,000*	60
65	74.8	221.4	40,000 *	76.1	220.7	40,000*	77.3	219.1	40,000*	65
70	73.5	220.0	40,000 *	74.7	219.2	40,000*	76.0	217.6	40,000*	70
75	72.1	218.4	40,000 *	73.4	217.6	40,000*	74.6	216.0	40,000*	75
80	70.7	216.6	40,000 *	72.0	215.9	40,000*	73.2	214.3	40,000*	80
85	69.3	214.8	40,000 *	70.6	214.0	40,000*	71.8	212.4	40,000*	85
90	68.0	212.8	40,000 *	69.2	212.0	40,000*	70.4	210.4	40,000*	90
100	65.1	208.3	40,000 *	66.4	207.6	40,000*	67.5	205.9	40,000*	100
110	62.2	203.2	40,000 *	63.5	202.5	40,000*	64.6	200.7	40,000*	110
120	59.2	197.5	35,500	60.5	196.7	35,900	61.6	194.9	36,400	120
130	56.2	191.1	31,400	57.4	190.3	31,800	58.5	188.4	32,200	130
140	53.0	183.8	28,000	54.2	183.0	28,400	55.2	181.0	28,700	140
150	49.6	175.7	25,100	50.8	174.8	25,400	51.8	172.7	25,600	150
160	46.1	166.5	22,500	47.3	165.5	22,800	48.2	163.3	23,000	160
170	42.4	156.0	20,300	43.5	155.0	20,500	44.4	152.7	20,700	170
180	38.3	144.0	18,300	39.4	142.9	18,500	40.3	140.4	18,600	180
190	33.9	130.1	16,500	35.0	128.8	16,700				190
200	28.9	113.3	14,900	29.9	111.9	15,000				200
210	22.8	92.2	13,400							210



Liftcrane Jib Capacities

New York City Code
 Jib No. 123 With 12 Ft. 6 in. Strut On
 Boom No. 82LR
 184,600 Lb. Crane Counterweight
 44,000 Lb. Carbody Counterweight
 360 Degree Rating

Meets
 ANSI B30.5
 Requirements



999 SERIES 2

30 Ft. JIB

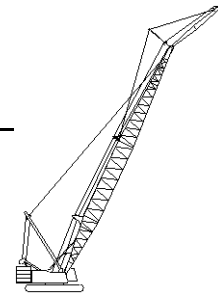
Jib Oper. Rad. Feet	0 Degree Offset			10 Degree Offset			20 Degree Offset			Jib Oper. Rad. Feet
	Boom Ang. Deg.	Jib Point Elev. Feet	Jib Capacity Pounds	Boom Ang. Deg.	Jib Point Elev. Feet	Jib Capacity Pounds	Boom Ang. Deg.	Jib Point Elev. Feet	Jib Capacity Pounds	
200 Ft. BOOM										
45	80.5	236.2	40,000 *							45
50	79.3	235.3	40,000 *	80.5	234.6	40,000*				50
55	78.0	234.2	40,000 *	79.3	233.5	40,000*	80.5	232.0	40,000*	55
60	76.8	233.1	40,000 *	78.0	232.4	40,000*	79.2	230.8	40,000*	60
65	75.5	231.8	40,000 *	76.7	231.1	40,000*	77.9	229.5	40,000*	65
70	74.2	230.4	40,000 *	75.4	229.7	40,000*	76.6	228.1	40,000*	70
75	72.9	228.9	40,000 *	74.1	228.2	40,000*	75.3	226.5	40,000*	75
80	71.6	227.2	40,000 *	72.8	226.5	40,000*	74.0	224.9	40,000*	80
85	70.3	225.5	40,000 *	71.5	224.7	40,000*	72.6	223.1	40,000*	85
90	69.0	223.5	40,000 *	70.2	222.8	40,000*	71.3	221.1	40,000*	90
100	66.3	219.3	40,000 *	67.5	218.6	40,000*	68.6	216.9	40,000*	100
110	63.5	214.5	39,800	64.7	213.8	40,000*	65.8	212.0	40,000*	110
120	60.7	209.1	35,000	61.9	208.3	35,500	63.0	206.6	35,900	120
130	57.8	203.1	30,900	59.0	202.3	31,300	60.0	200.4	31,700	130
140	54.8	196.3	27,500	56.0	195.4	27,900	57.0	193.5	28,200	140
150	51.7	188.7	24,500	52.9	187.8	24,900	53.8	185.8	25,200	150
160	48.5	180.2	22,000	49.6	179.3	22,300	50.5	177.2	22,500	160
170	45.0	170.6	19,700	46.1	169.6	20,000	47.0	167.4	20,200	170
180	41.4	159.8	17,700	42.5	158.7	18,000	43.3	156.4	18,100	180
190	37.5	147.4	16,000	38.5	146.3	16,100	39.3	143.7	16,300	190
200	33.1	133.0	14,400	34.1	131.7	14,500				200
210	28.2	115.8	12,900	29.1	114.3	13,000				210
220	22.3	94.1	11,600							220



Liftcrane Jib Capacities

New York City Code
Jib No. 123 With 12 Ft. 6 in. Strut On
Boom No. 82LR
184,600 Lb. Crane Counterweight
44,000 Lb. Carbody Counterweight
360 Degree Rating

Meets
ANSI B30.5
Requirements



999 SERIES 2

30 Ft. JIB

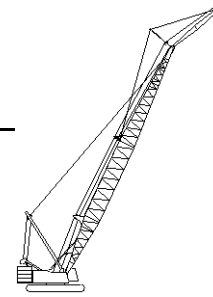
Jib Oper. Rad. Feet	0 Degree Offset			10 Degree Offset			20 Degree Offset			Jib Oper. Rad. Feet
	Boom Ang. Deg.	Jib Point Elev. Feet	Jib Capacity Pounds	Boom Ang. Deg.	Jib Point Elev. Feet	Jib Capacity Pounds	Boom Ang. Deg.	Jib Point Elev. Feet	Jib Capacity Pounds	
210 Ft. BOOM										
45	80.9	246.4	40,000 *							45
50	79.7	245.5	40,000 *	80.9	244.8	40,000*				50
55	78.5	244.5	40,000 *	79.7	243.8	40,000*	80.9	242.2	40,000*	55
60	77.3	243.4	40,000 *	78.5	242.7	40,000*	79.6	241.1	40,000*	60
65	76.1	242.1	40,000 *	77.3	241.4	40,000*	78.4	239.8	40,000*	65
70	74.9	240.8	40,000 *	76.0	240.1	40,000*	77.2	238.5	40,000*	70
75	73.6	239.3	40,000 *	74.8	238.6	40,000*	75.9	237.0	40,000*	75
80	72.4	237.8	40,000 *	73.5	237.0	40,000*	74.7	235.4	40,000*	80
85	71.1	236.1	40,000 *	72.3	235.3	40,000*	73.4	233.7	40,000*	85
90	69.9	234.3	40,000 *	71.0	233.5	40,000*	72.1	231.9	40,000*	90
100	67.3	230.2	40,000 *	68.5	229.5	40,000*	69.5	227.8	40,000*	100
110	64.7	225.7	39,500	65.8	224.9	40,000*	66.9	223.2	40,000*	110
120	62.0	220.6	34,600	63.2	219.8	35,100	64.2	218.0	35,600	120
130	59.3	214.9	30,500	60.4	214.0	31,000	61.4	212.2	31,400	130
140	56.5	208.5	27,100	57.6	207.6	27,500	58.6	205.8	27,800	140
150	53.6	201.3	24,100	54.7	200.5	24,500	55.6	198.5	24,800	150
160	50.6	193.4	21,600	51.6	192.5	21,900	52.6	190.5	22,200	160
170	47.4	184.6	19,300	48.5	183.6	19,600	49.3	181.5	19,800	170
180	44.0	174.7	17,300	45.1	173.7	17,600	45.9	171.4	17,800	180
190	40.5	163.5	15,600	41.5	162.4	15,800	42.3	160.0	15,900	190
200	36.6	150.7	14,000	37.6	149.5	14,200				200
210	32.4	135.9	12,500	33.4	134.6	12,700				210
220	27.6	118.3	11,200							220
230	21.8	96.0	10,000							230



Liftcrane Jib Capacities

New York City Code
 Jib No. 123 With 12 Ft. 6 in. Strut On
 Boom No. 82LR
 184,600 Lb. Crane Counterweight
 44,000 Lb. Carbody Counterweight
 360 Degree Rating

Meets
 ANSI B30.5
 Requirements



999 SERIES 2

30 Ft. JIB

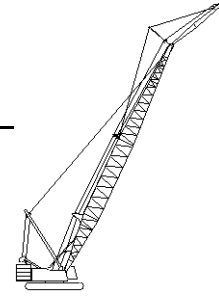
Jib Oper. Rad. Feet	0 Degree Offset			10 Degree Offset			20 Degree Offset			Jib Oper. Rad. Feet
	Boom Ang. Deg.	Jib Point Elev. Feet	Jib Capacity Pounds	Boom Ang. Deg.	Jib Point Elev. Feet	Jib Capacity Pounds	Boom Ang. Deg.	Jib Point Elev. Feet	Jib Capacity Pounds	
220 Ft. BOOM										
50	80.1	255.7	40,000 *							50
55	79.0	254.7	40,000 *	80.1	254.0	40,000*				55
60	77.8	253.6	40,000 *	79.0	252.9	40,000*	80.1	251.3	40,000*	60
65	76.7	252.4	40,000 *	77.8	251.7	40,000*	78.9	250.1	40,000*	65
70	75.5	251.2	40,000 *	76.6	250.4	40,000*	77.7	248.8	40,000*	70
75	74.3	249.8	40,000 *	75.4	249.0	40,000*	76.5	247.4	40,000*	75
80	73.1	248.3	40,000 *	74.2	247.5	40,000*	75.3	245.9	40,000*	80
85	71.9	246.6	40,000 *	73.0	245.9	40,000*	74.1	244.3	40,000*	85
90	70.7	244.9	40,000 *	71.8	244.2	40,000*	72.9	242.5	40,000*	90
100	68.3	241.1	40,000 *	69.4	240.3	40,000*	70.4	238.6	40,000*	100
110	65.8	236.7	39,100	66.9	236.0	39,700	67.9	234.3	40,000*	110
120	63.2	231.9	34,200	64.3	231.1	34,700	65.3	229.3	35,200	120
130	60.7	226.5	30,100	61.7	225.7	30,600	62.7	223.9	31,000	130
140	58.0	220.4	26,700	59.1	219.6	27,100	60.0	217.7	27,500	140
150	55.3	213.7	23,700	56.3	212.9	24,100	57.3	210.9	24,400	150
160	52.4	206.3	21,200	53.5	205.4	21,500	54.4	203.4	21,800	160
170	49.5	198.0	18,900	50.5	197.1	19,200	51.4	195.0	19,500	170
180	46.4	188.9	16,900	47.4	187.9	17,200	48.2	185.7	17,400	180
190	43.1	178.6	15,200	44.1	177.6	15,400	44.9	175.3	15,600	190
200	39.6	167.1	13,600	40.6	166.0	13,800	41.4	163.5	13,900	200
210	35.9	153.9	12,100	36.8	152.7	12,300				210
220	31.7	138.7	10,800	32.6	137.4	11,000				220
230	27.0	120.6	9,600							230
240	21.4	97.9	8,500							240



Liftcrane Jib Capacities

New York City Code
Jib No. 123 With 12 Ft. 6 in. Strut On
Boom No. 82LR
184,600 Lb. Crane Counterweight
44,000 Lb. Carbody Counterweight
360 Degree Rating

Meets
ANSI B30.5
Requirements



999 SERIES 2

30 Ft. JIB

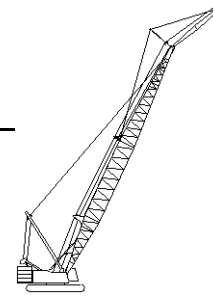
Jib Oper. Rad. Feet	0 Degree Offset			10 Degree Offset			20 Degree Offset			Jib Oper. Rad. Feet
	Boom Ang. Deg.	Jib Point Elev. Feet	Jib Capacity Pounds	Boom Ang. Deg.	Jib Point Elev. Feet	Jib Capacity Pounds	Boom Ang. Deg.	Jib Point Elev. Feet	Jib Capacity Pounds	
230 Ft. BOOM										
50	80.5	265.8	40,000 *							50
55	79.4	264.9	40,000 *	80.5	264.2	40,000*				55
60	78.3	263.9	40,000 *	79.4	263.1	40,000*	80.5	261.5	40,000*	60
65	77.2	262.7	40,000 *	78.3	262.0	40,000*	79.3	260.4	40,000*	65
70	76.0	261.5	40,000 *	77.1	260.8	40,000*	78.2	259.2	40,000*	70
75	74.9	260.2	40,000 *	76.0	259.4	40,000*	77.0	257.8	40,000*	75
80	73.8	258.7	40,000 *	74.9	258.0	40,000*	75.9	256.4	40,000*	80
85	72.6	257.2	40,000 *	73.7	256.4	40,000*	74.7	254.8	40,000*	85
90	71.5	255.5	40,000 *	72.5	254.8	40,000*	73.6	253.1	40,000*	90
100	69.1	251.8	37,200	70.2	251.1	38,100	71.2	249.4	39,000	100
110	66.8	247.7	31,500	67.8	246.9	32,300	68.8	245.2	33,100	110
120	64.4	243.1	26,800	65.4	242.3	27,600	66.4	240.5	28,200	120
130	61.9	237.9	23,000	62.9	237.1	23,600	63.9	235.3	24,200	130
140	59.4	232.2	19,700	60.4	231.4	20,200	61.3	229.5	20,800	140
150	56.8	225.8	16,900	57.8	225.0	17,400	58.7	223.1	17,800	150
160	54.1	218.8	14,400	55.1	218.0	14,900	56.0	216.0	15,300	160
170	51.3	211.1	12,300	52.3	210.2	12,700	53.2	208.2	13,000	170
180	48.4	202.5	10,400	49.4	201.6	10,700	50.3	199.5	11,000	180
190	45.4	193.0	8,700	46.4	192.1	9,000	47.2	189.8	9,300	190
200	42.2	182.5	7,200	43.2	181.4	7,400	43.9	179.0	7,700	200
210	38.8	170.6	5,800	39.8	169.5	6,000	40.5	166.9	6,200	210
220	35.1	157.1	4,500	36.1	155.9	4,800				220



Liftcrane Jib Capacities

New York City Code
 Jib No. 123 With 12 Ft. 6 in. Strut On
 Boom No. 82LR
 184,600 Lb. Crane Counterweight
 44,000 Lb. Carbody Counterweight
 360 Degree Rating

Meets
 ANSI B30.5
 Requirements



999 SERIES 2

30 Ft. JIB

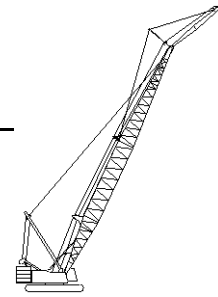
Jib Oper. Rad. Feet	0 Degree Offset			10 Degree Offset			20 Degree Offset			Jib Oper. Rad. Feet
	Boom Ang. Deg.	Jib Point Elev. Feet	Jib Capacity Pounds	Boom Ang. Deg.	Jib Point Elev. Feet	Jib Capacity Pounds	Boom Ang. Deg.	Jib Point Elev. Feet	Jib Capacity Pounds	
240 Ft. BOOM										
50	80.9	276.0	40,000 *							50
55	79.8	275.1	40,000 *	80.9	274.4	40,000*				55
60	78.7	274.1	40,000 *	79.8	273.4	40,000*	80.8	271.8	40,000*	60
65	77.7	273.0	40,000 *	78.7	272.3	40,000*	79.7	270.7	40,000*	65
70	76.6	271.8	40,000 *	77.6	271.1	40,000*	78.6	269.5	40,000*	70
75	75.5	270.5	40,000 *	76.5	269.8	40,000*	77.5	268.2	40,000*	75
80	74.4	269.1	40,000 *	75.4	268.4	40,000*	76.4	266.8	40,000*	80
85	73.3	267.7	40,000 *	74.3	266.9	40,000*	75.3	265.3	40,000*	85
90	72.2	266.1	40,000 *	73.2	265.3	40,000*	74.2	263.7	40,000*	90
100	69.9	262.5	36,500	71.0	261.8	37,400	71.9	260.1	38,300	100
110	67.7	258.6	30,800	68.7	257.8	31,600	69.7	256.1	32,400	110
120	65.4	254.2	26,100	66.4	253.4	26,900	67.3	251.6	27,600	120
130	63.0	249.2	22,200	64.0	248.4	22,900	64.9	246.7	23,500	130
140	60.6	243.8	18,900	61.6	243.0	19,500	62.5	241.1	20,100	140
150	58.1	237.8	16,100	59.1	236.9	16,700	60.0	235.1	17,100	150
160	55.6	231.1	13,700	56.6	230.3	14,100	57.5	228.3	14,600	160
170	53.0	223.8	11,500	54.0	222.9	12,000	54.8	221.0	12,300	170
180	50.3	215.8	9,600	51.3	214.9	10,000	52.1	212.8	10,300	180
190	47.5	206.9	7,900	48.4	206.0	8,300	49.2	203.8	8,600	190
200	44.5	197.1	6,400	45.5	196.1	6,700	46.2	193.9	7,000	200
210	41.4	186.2	5,000	42.3	185.2	5,300	43.0	182.8	5,500	210
220				39.0	172.9	4,000	39.6	170.3	4,200	220



Liftcrane Jib Capacities

New York City Code
Jib No. 123 With 12 Ft. 6 in. Strut On
Boom No. 82LR
184,600 Lb. Crane Counterweight
44,000 Lb. Carbody Counterweight
360 Degree Rating

Meets
ANSI B30.5
Requirements



999 SERIES 2

30 Ft. JIB

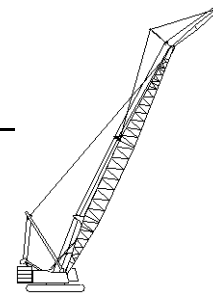
Jib Oper. Rad. Feet	0 Degree Offset			10 Degree Offset			20 Degree Offset			Jib Oper. Rad. Feet
	Boom Ang. Deg.	Jib Point Elev. Feet	Jib Capacity Pounds	Boom Ang. Deg.	Jib Point Elev. Feet	Jib Capacity Pounds	Boom Ang. Deg.	Jib Point Elev. Feet	Jib Capacity Pounds	
250 Ft. BOOM										
55	80.2	285.2	40,000 *							55
60	79.1	284.3	40,000 *	80.2	283.6	40,000*				60
65	78.1	283.2	40,000 *	79.1	282.5	40,000*	80.1	280.9	40,000*	65
70	77.1	282.1	40,000 *	78.1	281.4	40,000*	79.1	279.8	40,000*	70
75	76.0	280.9	40,000 *	77.0	280.1	40,000*	78.0	278.5	40,000*	75
80	75.0	279.5	40,000 *	76.0	278.8	40,000*	76.9	277.2	40,000*	80
85	73.9	278.1	40,000 *	74.9	277.4	40,000*	75.9	275.7	40,000*	85
90	72.8	276.6	40,000 *	73.8	275.8	40,000*	74.8	274.2	40,000*	90
100	70.7	273.2	35,900	71.7	272.4	36,900	72.6	270.8	37,800	100
110	68.5	269.4	30,200	69.5	268.6	31,100	70.4	266.9	31,900	110
120	66.3	265.2	25,500	67.3	264.4	26,300	68.2	262.6	27,100	120
130	64.0	260.4	21,600	65.0	259.7	22,400	65.9	257.9	23,000	130
140	61.8	255.2	18,400	62.7	254.4	19,000	63.6	252.6	19,600	140
150	59.4	249.5	15,500	60.4	248.7	16,100	61.2	246.8	16,600	150
160	57.0	243.2	13,100	58.0	242.4	13,600	58.8	240.5	14,100	160
170	54.5	236.3	10,900	55.5	235.4	11,400	56.3	233.5	11,800	170
180	52.0	228.7	9,000	52.9	227.8	9,500	53.7	225.8	9,800	180
190	49.3	220.4	7,300	50.2	219.5	7,700	51.0	217.4	8,000	190
200	46.6	211.2	5,800	47.5	210.3	6,200	48.2	208.1	6,400	200
210	43.7	201.2	4,500	44.6	200.1	4,800	45.3	197.8	5,000	210



Liftcrane Jib Capacities

New York City Code
Jib No. 123 With 12 Ft. 6 in. Strut On
Boom No. 82LR
184,600 Lb. Crane Counterweight
44,000 Lb. Carbody Counterweight
360 Degree Rating

Meets
ANSI B30.5
Requirements



999 SERIES 2

30 Ft. JIB

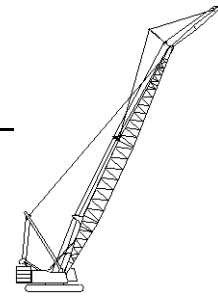
Jib Oper. Rad. Feet	0 Degree Offset			10 Degree Offset			20 Degree Offset			Jib Oper. Rad. Feet
	Boom Ang. Deg.	Jib Point Elev. Feet	Jib Capacity Pounds	Boom Ang. Deg.	Jib Point Elev. Feet	Jib Capacity Pounds	Boom Ang. Deg.	Jib Point Elev. Feet	Jib Capacity Pounds	
260 Ft. BOOM										
55	80.5	295.4	40,000 *							55
60	79.5	294.5	40,000 *	80.5	293.8	40,000*				60
65	78.5	293.5	40,000 *	79.5	292.7	40,000*	80.5	291.1	40,000*	65
70	77.5	292.4	40,000 *	78.5	291.6	40,000*	79.4	290.0	40,000*	70
75	76.5	291.2	40,000 *	77.5	290.5	40,000*	78.4	288.8	40,000*	75
80	75.5	289.9	40,000 *	76.5	289.2	40,000*	77.4	287.5	40,000*	80
85	74.5	288.5	40,000 *	75.4	287.8	40,000*	76.4	286.1	40,000*	85
90	73.4	287.0	40,000 *	74.4	286.3	40,000*	75.3	284.6	40,000*	90
100	71.4	283.8	35,300	72.3	283.0	36,400	73.3	281.4	37,400	100
110	69.3	280.1	29,600	70.2	279.4	30,500	71.1	277.7	31,400	110
120	67.2	276.1	25,000	68.1	275.3	25,800	69.0	273.6	26,500	120
130	65.0	271.6	21,100	65.9	270.8	21,800	66.8	269.0	22,500	130
140	62.8	266.6	17,800	63.7	265.8	18,400	64.6	264.0	19,000	140
150	60.6	261.1	14,900	61.5	260.3	15,500	62.3	258.4	16,100	150
160	58.3	255.1	12,500	59.2	254.3	13,000	60.0	252.4	13,500	160
170	55.9	248.5	10,300	56.8	247.7	10,800	57.6	245.7	11,300	170
180	53.5	241.3	8,400	54.4	240.5	8,900	55.2	238.5	9,300	180
190	51.0	233.5	6,700	51.9	232.6	7,100	52.7	230.5	7,500	190
200	48.4	224.9	5,200	49.3	223.9	5,600	50.0	221.8	5,900	200
210				46.6	214.5	4,200	47.3	212.2	4,500	210
270 Ft. BOOM										
55	80.8	305.5	40,000 *							55
60	79.9	304.6	40,000 *	80.8	303.9	40,000*				60
65	78.9	303.7	40,000 *	79.8	303.0	40,000*	80.8	301.3	40,000*	65
70	77.9	302.6	40,000 *	78.9	301.9	40,000*	79.8	300.3	40,000*	70
75	77.0	301.5	40,000 *	77.9	300.7	40,000*	78.8	299.1	40,000*	75
80	76.0	300.2	40,000 *	76.9	299.5	40,000*	77.8	297.9	40,000*	80
85	75.0	298.9	40,000 *	75.9	298.2	40,000*	76.8	296.5	40,000*	85
90	74.0	297.5	40,000 *	74.9	296.7	40,000*	75.8	295.1	40,000*	90
100	72.0	294.4	34,800	72.9	293.6	35,800	73.8	291.9	36,900	100
110	70.0	290.8	29,100	70.9	290.1	30,000	71.8	288.4	30,900	110
120	68.0	286.9	24,400	68.9	286.2	25,200	69.7	284.4	26,000	120
130	65.9	282.6	20,500	66.8	281.8	21,300	67.7	280.0	22,000	130
140	63.8	277.8	17,200	64.7	277.0	17,900	65.5	275.2	18,500	140
150	61.6	272.6	14,400	62.5	271.7	15,000	63.4	269.9	15,600	150
160	59.4	266.8	11,900	60.3	266.0	12,500	61.2	264.1	13,000	160
170	57.2	260.6	9,800	58.1	259.7	10,300	58.9	257.8	10,700	170
180	54.9	253.7	7,900	55.8	252.9	8,300	56.6	250.9	8,700	180
190	52.5	246.3	6,200	53.4	245.4	6,600	54.2	243.4	7,000	190
200	50.1	238.2	4,600	50.9	237.2	5,000	51.7	235.1	5,400	200



Liftcrane Jib Capacities

New York City Code
Jib No. 123 With 12 Ft. 6 in. Strut On
Boom No. 82LR
184,600 Lb. Crane Counterweight
44,000 Lb. Carbody Counterweight
360 Degree Rating

Meets
ANSI B30.5
Requirements



999 SERIES 2

30 Ft. JIB

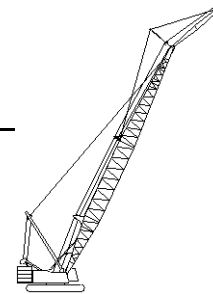
Jib Oper. Rad. Feet	0 Degree Offset			10 Degree Offset			20 Degree Offset			Jib Oper. Rad. Feet
	Boom Ang. Deg.	Jib Point Elev. Feet	Jib Capacity Pounds	Boom Ang. Deg.	Jib Point Elev. Feet	Jib Capacity Pounds	Boom Ang. Deg.	Jib Point Elev. Feet	Jib Capacity Pounds	
280 Ft. BOOM										
60	80.2	314.8	40,000 *							60
65	79.3	313.9	40,000 *	80.2	313.1	40,000*				65
70	78.3	312.9	40,000 *	79.2	312.1	40,000*	80.1	310.5	40,000*	70
75	77.4	311.7	40,000 *	78.3	311.0	40,000*	79.2	309.4	40,000*	75
80	76.4	310.5	40,000 *	77.3	309.8	40,000*	78.2	308.2	40,000*	80
85	75.5	309.3	40,000 *	76.4	308.5	40,000*	77.3	306.9	40,000*	85
90	74.5	307.9	40,000 *	75.4	307.1	40,000*	76.3	305.5	40,000*	90
100	72.6	304.9	34,100	73.5	304.1	35,200	74.4	302.4	36,200	100
110	70.7	301.5	28,300	71.6	300.7	29,300	72.4	299.0	30,300	110
120	68.7	297.7	23,700	69.6	296.9	24,500	70.4	295.2	25,400	120
130	66.7	293.5	19,800	67.6	292.8	20,600	68.4	291.0	21,300	130
140	64.7	288.9	16,400	65.6	288.1	17,200	66.4	286.4	17,800	140
150	62.6	283.9	13,600	63.5	283.1	14,300	64.3	281.3	14,900	150
160	60.5	278.4	11,200	61.4	277.6	11,800	62.2	275.7	12,300	160
170	58.4	272.4	9,000	59.2	271.6	9,500	60.0	269.7	10,000	170
180	56.2	265.9	7,100	57.0	265.1	7,600	57.8	263.1	8,000	180
190	53.9	258.8	5,400	54.8	257.9	5,900	55.5	256.0	6,300	190
200				52.5	250.2	4,300	53.2	248.2	4,700	200
290 Ft. BOOM										
60	80.5	325.0	40,000 *							60
65	79.6	324.1	40,000 *	80.5	323.3	40,000*				65
70	78.7	323.1	40,000 *	79.6	322.3	40,000*	80.5	320.7	40,000*	70
75	77.8	322.0	40,000 *	78.7	321.3	40,000*	79.5	319.6	40,000*	75
80	76.9	320.8	40,000 *	77.8	320.1	40,000*	78.6	318.5	40,000*	80
85	75.9	319.6	40,000 *	76.8	318.9	40,000*	77.7	317.2	39,900*	85
90	75.0	318.3	40,000 *	75.9	317.5	40,000*	76.8	315.9	39,700*	90
100	73.2	315.4	33,500	74.0	314.6	34,600	74.9	312.9	35,700	100
110	71.3	312.1	27,700	72.2	311.3	28,800	73.0	309.6	29,800	110
120	69.4	308.4	23,100	70.3	307.7	24,000	71.1	306.0	24,900	120
130	67.5	304.4	19,200	68.3	303.6	20,000	69.1	301.9	20,800	130
140	65.5	300.0	15,800	66.4	299.2	16,600	67.2	297.4	17,300	140
150	63.6	295.2	13,000	64.4	294.4	13,700	65.2	292.6	14,300	150
160	61.5	289.9	10,500	62.4	289.1	11,200	63.2	287.2	11,700	160
170	59.5	284.1	8,400	60.3	283.3	9,000	61.1	281.4	9,500	170
180	57.4	277.9	6,500	58.2	277.1	7,000	59.0	275.1	7,500	180
190	55.2	271.2	4,800	56.1	270.3	5,300	56.8	268.3	5,700	190
200							54.5	260.9	4,100	200



Liftcrane Jib Capacities

New York City Code
 Jib No. 123 With 12 Ft. 6 in. Strut On
 Boom No. 82LR
 184,600 Lb. Crane Counterweight
 44,000 Lb. Carbody Counterweight
 360 Degree Rating

Meets
 ANSI B30.5
 Requirements



999 SERIES 2

30 Ft. JIB

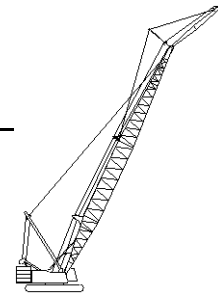
Jib Oper. Rad. Feet	0 Degree Offset			10 Degree Offset			20 Degree Offset			Jib Oper. Rad. Feet
	Boom Ang. Deg.	Jib Point Elev. Feet	Jib Capacity Pounds	Boom Ang. Deg.	Jib Point Elev. Feet	Jib Capacity Pounds	Boom Ang. Deg.	Jib Point Elev. Feet	Jib Capacity Pounds	
300 Ft. BOOM										
60	80.8	335.1	40,000 *							60
65	79.9	334.2	40,000 *	80.8	333.5	40,000*				65
70	79.0	333.3	40,000 *	79.9	332.5	40,000*	80.7	330.9	37,500*	70
75	78.2	332.2	40,000 *	79.0	331.5	40,000*	79.9	329.9	37,200*	75
80	77.3	331.1	40,000 *	78.1	330.4	40,000*	79.0	328.7	37,100*	80
85	76.4	329.9	40,000 *	77.2	329.2	40,000*	78.1	327.5	36,900*	85
90	75.5	328.6	40,000 *	76.3	327.9	40,000*	77.2	326.2	36,700*	90
100	73.7	325.8	32,900	74.5	325.1	34,100	75.4	323.4	35,200	100
110	71.9	322.6	27,100	72.7	321.9	28,200	73.5	320.2	29,200	110
120	70.0	319.1	22,500	70.9	318.4	23,400	71.7	316.6	24,300	120
130	68.2	315.2	18,500	69.0	314.5	19,400	69.8	312.7	20,200	130
140	66.3	311.0	15,200	67.1	310.2	16,000	67.9	308.4	16,700	140
150	64.4	306.3	12,400	65.2	305.5	13,100	66.0	303.7	13,800	150
160	62.5	301.2	9,900	63.3	300.4	10,600	64.0	298.6	11,200	160
170	60.5	295.7	7,800	61.3	294.9	8,400	62.1	293.0	8,900	170
180	58.5	289.8	5,900	59.3	288.9	6,400	60.0	287.0	6,900	180
190	56.4	283.3	4,200	57.2	282.4	4,700	57.9	280.5	5,100	190



Liftcrane Jib Capacities

New York City Code
Jib No. 123 With 12 Ft. 6 in. Strut On
Boom No. 82LR
184,600 Lb. Crane Counterweight
44,000 Lb. Carbody Counterweight
360 Degree Rating

Meets
ANSI B30.5
Requirements



999 SERIES 2

40 Ft. JIB

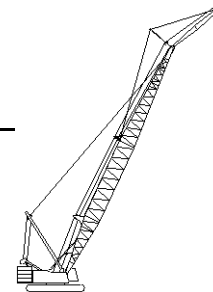
Jib Oper. Rad. Feet	0 Degree Offset			10 Degree Offset			20 Degree Offset			Jib Oper. Rad. Feet
	Boom Ang. Deg.	Jib Point Elev. Feet	Jib Capacity Pounds	Boom Ang. Deg.	Jib Point Elev. Feet	Jib Capacity Pounds	Boom Ang. Deg.	Jib Point Elev. Feet	Jib Capacity Pounds	
120 Ft. BOOM										
35	80.3	166.9	30,000 *							35
40	78.5	165.8	30,000 *	80.9	165.0	30,000*				40
45	76.7	164.7	30,000 *	79.1	163.8	30,000*				45
50	74.9	163.3	30,000 *	77.2	162.4	30,000*	79.6	160.5	30,000*	50
55	73.0	161.8	30,000 *	75.4	160.9	30,000*	77.7	158.9	30,000*	55
60	71.1	160.0	30,000 *	73.5	159.1	30,000*	75.8	157.2	30,000*	60
65	69.2	158.1	30,000 *	71.6	157.2	30,000*	73.8	155.2	30,000*	65
70	67.3	156.0	30,000 *	69.6	155.1	30,000*	71.9	153.1	30,000*	70
75	65.4	153.7	30,000 *	67.7	152.8	30,000*	69.9	150.8	30,000*	75
80	63.4	151.2	30,000 *	65.7	150.3	30,000*	67.8	148.2	30,000*	80
85	61.4	148.5	30,000 *	63.6	147.5	30,000*	65.8	145.4	29,200*	85
90	59.3	145.5	30,000 *	61.6	144.5	30,000*	63.7	142.4	28,200*	90
100	55.0	138.8	30,000 *	57.3	137.8	30,000*	59.3	135.5	26,400*	100
110	50.5	130.9	30,000 *	52.7	129.8	29,700*	54.6	127.4	24,900*	110
120	45.6	121.6	30,000 *	47.8	120.4	27,700*	49.6	117.7	23,700*	120
130	40.3	110.5	29,500 *	42.4	109.1	26,000*	44.1	106.2	22,600*	130
140	34.3	96.9	27,300 *	36.3	95.3	24,500*				140
150	27.2	79.3	25,400 *							150
130 Ft. BOOM										
35	80.9	177.0	30,000 *							35
40	79.2	176.1	30,000 *							40
45	77.5	175.0	30,000 *	79.7	174.1	30,000*				45
50	75.8	173.7	30,000 *	78.0	172.8	30,000*	80.2	170.9	30,000*	50
55	74.0	172.2	30,000 *	76.3	171.3	30,000*	78.4	169.4	30,000*	55
60	72.3	170.6	30,000 *	74.5	169.7	30,000*	76.6	167.7	30,000*	60
65	70.5	168.8	30,000 *	72.7	167.9	30,000*	74.8	165.9	30,000*	65
70	68.7	166.9	30,000 *	70.9	166.0	30,000*	73.0	163.9	30,000*	70
75	66.9	164.8	30,000 *	69.1	163.8	30,000*	71.2	161.8	30,000*	75
80	65.1	162.4	30,000 *	67.2	161.5	30,000*	69.3	159.4	30,000*	80
85	63.2	159.9	30,000 *	65.3	158.9	30,000*	67.4	156.8	30,000*	85
90	61.3	157.1	30,000 *	63.4	156.2	30,000*	65.4	154.0	29,000*	90
100	57.3	151.0	30,000 *	59.5	149.9	30,000*	61.4	147.7	27,200*	100
110	53.2	143.8	30,000 *	55.3	142.7	30,000*	57.2	140.3	25,700*	110
120	48.9	135.4	30,000 *	50.9	134.3	28,900*	52.7	131.7	24,400*	120
130	44.2	125.6	30,000 *	46.2	124.4	27,100*	47.9	121.6	23,300*	130
140	39.1	114.0	28,900 *	41.0	112.6	25,600*	42.6	109.5	22,400*	140
150	33.3	99.8	27,000 *	35.1	98.2	24,300*				150
160	26.3	81.6	24,900							160



Liftcrane Jib Capacities

New York City Code
Jib No. 123 With 12 Ft. 6 in. Strut On
Boom No. 82LR
184,600 Lb. Crane Counterweight
44,000 Lb. Carbody Counterweight
360 Degree Rating

Meets
ANSI B30.5
Requirements



999 SERIES 2

40 Ft. JIB

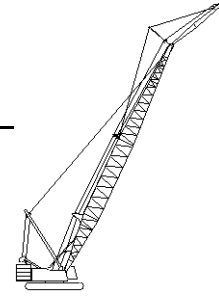
Jib Oper. Rad. Feet	0 Degree Offset			10 Degree Offset			20 Degree Offset			Jib Oper. Rad. Feet
	Boom Ang. Deg.	Jib Point Elev. Feet	Jib Capacity Pounds	Boom Ang. Deg.	Jib Point Elev. Feet	Jib Capacity Pounds	Boom Ang. Deg.	Jib Point Elev. Feet	Jib Capacity Pounds	
140 Ft. BOOM										
40	79.8	186.3	30,000*							40
45	78.2	185.2	30,000*	80.3	184.3	30,000*				45
50	76.6	184.0	30,000*	78.7	183.1	30,000*	80.8	181.2	30,000*	50
55	74.9	182.7	30,000*	77.0	181.8	30,000*	79.1	179.8	30,000*	55
60	73.3	181.2	30,000*	75.4	180.2	30,000*	77.4	178.2	30,000*	60
65	71.6	179.5	30,000*	73.7	178.6	30,000*	75.7	176.5	30,000*	65
70	69.9	177.6	30,000*	72.0	176.7	30,000*	74.0	174.7	30,000*	70
75	68.2	175.6	30,000*	70.3	174.7	30,000*	72.3	172.6	30,000*	75
80	66.5	173.5	30,000*	68.6	172.5	30,000*	70.5	170.4	30,000*	80
85	64.8	171.1	30,000*	66.8	170.1	30,000*	68.8	168.0	30,000*	85
90	63.0	168.6	30,000*	65.0	167.6	30,000*	67.0	165.4	29,800*	90
100	59.4	162.8	30,000*	61.4	161.8	30,000*	63.2	159.6	28,000*	100
110	55.6	156.2	30,000*	57.6	155.2	30,000*	59.4	152.8	26,500*	110
120	51.6	148.6	30,000*	53.6	147.5	30,000*	55.3	145.0	25,100*	120
130	47.4	139.8	30,000*	49.3	138.6	28,300*	51.0	135.9	24,000*	130
140	42.9	129.5	30,000*	44.8	128.2	26,700*	46.3	125.3	23,000*	140
150	37.9	117.4	27,200	39.7	115.9	25,300*	41.1	112.7	22,200*	150
160	32.3	102.6	24,600	34.0	101.0	24,100*				160
170	25.6	83.8	22,300							170
150 Ft. BOOM										
40	80.3	196.5	30,000*							40
45	78.8	195.5	30,000*	80.8	194.6	30,000*				45
50	77.3	194.3	30,000*	79.3	193.4	30,000*				50
55	75.7	193.0	30,000*	77.7	192.1	30,000*	79.7	190.1	30,000*	55
60	74.2	191.6	30,000*	76.2	190.7	30,000*	78.1	188.7	30,000*	60
65	72.6	190.0	30,000*	74.6	189.1	30,000*	76.5	187.1	30,000*	65
70	71.0	188.3	30,000*	73.0	187.4	30,000*	74.9	185.3	30,000*	70
75	69.4	186.4	30,000*	71.4	185.5	30,000*	73.3	183.4	30,000*	75
80	67.8	184.4	30,000*	69.8	183.4	30,000*	71.6	181.3	30,000*	80
85	66.2	182.2	30,000*	68.1	181.2	30,000*	70.0	179.1	30,000*	85
90	64.5	179.8	30,000*	66.5	178.8	30,000*	68.3	176.6	30,000*	90
100	61.1	174.5	30,000*	63.1	173.4	30,000*	64.8	171.2	28,700*	100
110	57.6	168.3	30,000*	59.5	167.3	30,000*	61.3	165.0	27,200*	110
120	54.0	161.3	30,000*	55.8	160.2	30,000*	57.5	157.8	25,800*	120
130	50.1	153.3	30,000*	52.0	152.1	29,400*	53.6	149.5	24,600*	130
140	46.1	144.0	29,800	47.9	142.8	27,700*	49.4	140.0	23,600*	140
150	41.7	133.3	26,900	43.4	131.9	26,300*	44.9	128.9	22,700*	150
160	36.9	120.7	24,300	38.6	119.2	24,600	39.8	115.8	22,000*	160
170	31.4	105.4	22,100	33.0	103.7	22,200				170
180	24.9	86.0	20,000							180



Liftcrane Jib Capacities

New York City Code
Jib No. 123 With 12 Ft. 6 in. Strut On
Boom No. 82LR
184,600 Lb. Crane Counterweight
44,000 Lb. Carbody Counterweight
360 Degree Rating

Meets
ANSI B30.5
Requirements



999 SERIES 2

40 Ft. JIB

Jib Oper. Rad. Feet	0 Degree Offset			10 Degree Offset			20 Degree Offset			Jib Oper. Rad. Feet
	Boom Ang. Deg.	Jib Point Elev. Feet	Jib Capacity Pounds	Boom Ang. Deg.	Jib Point Elev. Feet	Jib Capacity Pounds	Boom Ang. Deg.	Jib Point Elev. Feet	Jib Capacity Pounds	
160 Ft. BOOM										
40	80.8	206.6	30,000 *							40
45	79.4	205.7	30,000 *							45
50	77.9	204.6	30,000 *	79.8	203.7	30,000*				50
55	76.5	203.4	30,000 *	78.4	202.5	30,000*	80.2	200.4	30,000*	55
60	75.0	202.0	30,000 *	76.9	201.1	30,000*	78.7	199.1	30,000*	60
65	73.5	200.5	30,000 *	75.4	199.6	30,000*	77.2	197.6	30,000*	65
70	72.0	198.9	30,000 *	73.9	198.0	30,000*	75.7	195.9	30,000*	70
75	70.5	197.1	30,000 *	72.4	196.2	30,000*	74.2	194.1	30,000*	75
80	69.0	195.2	30,000 *	70.9	194.2	30,000*	72.6	192.1	30,000*	80
85	67.4	193.1	30,000 *	69.3	192.1	30,000*	71.1	190.0	30,000*	85
90	65.9	190.9	30,000 *	67.7	189.9	30,000*	69.5	187.7	30,000*	90
100	62.7	185.9	30,000 *	64.5	184.9	30,000*	66.2	182.7	29,500*	100
110	59.4	180.2	30,000 *	61.2	179.1	30,000*	62.9	176.8	27,900*	110
120	56.0	173.6	30,000 *	57.8	172.6	30,000*	59.4	170.2	26,500*	120
130	52.5	166.2	30,000 *	54.3	165.1	30,000*	55.8	162.6	25,300*	130
140	48.8	157.8	29,300	50.5	156.6	28,700*	52.0	153.9	24,200*	140
150	44.8	148.1	26,400	46.5	146.8	26,700	47.9	144.0	23,300*	150
160	40.6	136.9	23,800	42.2	135.5	24,100	43.5	132.5	22,500*	160
170	35.9	123.9	21,600	37.5	122.3	21,800				170
180	30.6	108.1	19,500	32.1	106.3	19,700				180
190	24.2	88.1	17,700							190

Manitowoc Cranes, Inc.

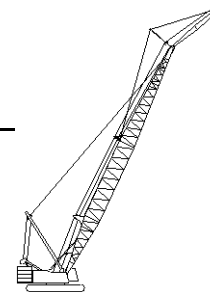
Manitowoc, Wisconsin 54220 U.S.A.



Liftcrane Jib Capacities

New York City Code
 Jib No. 123 With 12 Ft. 6 in. Strut On
 Boom No. 82LR
 184,600 Lb. Crane Counterweight
 44,000 Lb. Carbody Counterweight
 360 Degree Rating

Meets
 ANSI B30.5
 Requirements



999 SERIES 2

40 Ft. JIB

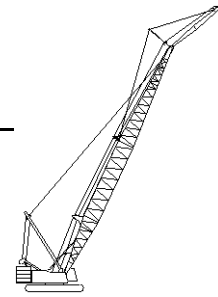
Jib Oper. Rad. Feet	0 Degree Offset			10 Degree Offset			20 Degree Offset			Jib Oper. Rad. Feet
	Boom Ang. Deg.	Jib Point Elev. Feet	Jib Capacity Pounds	Boom Ang. Deg.	Jib Point Elev. Feet	Jib Capacity Pounds	Boom Ang. Deg.	Jib Point Elev. Feet	Jib Capacity Pounds	
170 Ft. BOOM										
45	79.9	215.9	30,000*							45
50	78.5	214.8	30,000*	80.3	213.9	30,000*				50
55	77.1	213.7	30,000*	78.9	212.8	30,000*	80.7	210.7	30,000*	55
60	75.7	212.4	30,000*	77.5	211.5	30,000*	79.3	209.4	30,000*	60
65	74.3	211.0	30,000*	76.1	210.0	30,000*	77.9	208.0	30,000*	65
70	72.9	209.4	30,000*	74.7	208.5	30,000*	76.4	206.4	30,000*	70
75	71.5	207.8	30,000*	73.3	206.8	30,000*	75.0	204.7	30,000*	75
80	70.0	205.9	30,000*	71.8	205.0	30,000*	73.5	202.9	30,000*	80
85	68.6	204.0	30,000*	70.3	203.0	30,000*	72.0	200.9	30,000*	85
90	67.1	201.9	30,000*	68.9	200.9	30,000*	70.5	198.7	30,000*	90
100	64.1	197.1	30,000*	65.9	196.1	30,000*	67.5	193.9	30,000*	100
110	61.0	191.8	30,000*	62.8	190.7	30,000*	64.4	188.5	28,500*	110
120	57.9	185.7	30,000*	59.6	184.6	30,000*	61.1	182.2	27,100*	120
130	54.6	178.8	30,000*	56.3	177.7	30,000*	57.8	175.2	25,900*	130
140	51.1	171.0	29,000	52.8	169.8	29,400	54.3	167.2	24,800*	140
150	47.5	162.2	26,000	49.2	160.9	26,400	50.6	158.2	23,900*	150
160	43.7	152.1	23,500	45.3	150.8	23,800	46.6	147.8	23,000*	160
170	39.5	140.5	21,200	41.1	139.1	21,500	42.3	135.9	21,700	170
180	35.0	127.0	19,200	36.5	125.4	19,400				180
190	29.8	110.7	17,400	31.2	108.8	17,600				190
200	23.6	90.1	15,800							200



Liftcrane Jib Capacities

New York City Code
Jib No. 123 With 12 Ft. 6 in. Strut On
Boom No. 82LR
184,600 Lb. Crane Counterweight
44,000 Lb. Carbody Counterweight
360 Degree Rating

Meets
ANSI B30.5
Requirements



999 SERIES 2

40 Ft. JIB

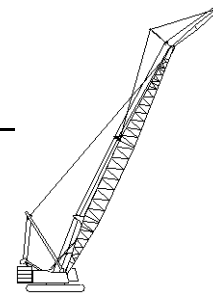
Jib Oper. Rad. Feet	0 Degree Offset			10 Degree Offset			20 Degree Offset			Jib Oper. Rad. Feet
	Boom Ang. Deg.	Jib Point Elev. Feet	Jib Capacity Pounds	Boom Ang. Deg.	Jib Point Elev. Feet	Jib Capacity Pounds	Boom Ang. Deg.	Jib Point Elev. Feet	Jib Capacity Pounds	
180 Ft. BOOM										
45	80.4	226.0	30,000 *							45
50	79.0	225.1	30,000 *	80.8	224.1	30,000*				50
55	77.7	224.0	30,000 *	79.4	223.0	30,000*				55
60	76.4	222.7	30,000 *	78.1	221.8	30,000*	79.8	219.7	30,000*	60
65	75.0	221.4	30,000 *	76.8	220.4	30,000*	78.4	218.4	30,000*	65
70	73.7	219.9	30,000 *	75.4	219.0	30,000*	77.1	216.9	30,000*	70
75	72.3	218.3	30,000 *	74.0	217.4	30,000*	75.7	215.3	30,000*	75
80	71.0	216.6	30,000 *	72.7	215.6	30,000*	74.3	213.5	30,000*	80
85	69.6	214.7	30,000 *	71.3	213.7	30,000*	72.9	211.6	30,000*	85
90	68.2	212.7	30,000 *	69.9	211.7	30,000*	71.5	209.6	30,000*	90
100	65.4	208.3	30,000 *	67.0	207.3	30,000*	68.6	205.1	30,000*	100
110	62.5	203.2	30,000 *	64.1	202.2	30,000*	65.7	199.9	29,200*	110
120	59.5	197.5	30,000 *	61.1	196.4	30,000*	62.6	194.1	27,700*	120
130	56.4	191.0	30,000 *	58.0	189.9	30,000*	59.5	187.5	26,500*	130
140	53.2	183.8	28,600	54.8	182.6	29,100	56.2	180.1	25,400*	140
150	49.9	175.6	25,700	51.5	174.4	26,100	52.8	171.8	24,400*	150
160	46.4	166.4	23,100	47.9	165.1	23,400	49.2	162.3	23,600*	160
170	42.6	156.0	20,900	44.1	154.6	21,100	45.4	151.6	21,400	170
180	38.6	144.0	18,900	40.1	142.5	19,100	41.2	139.2	19,300	180
190	34.1	130.0	17,100	35.6	128.3	17,300				190
200	29.1	113.3	15,500	30.4	111.3	15,600				200
210	23.0	92.1	14,000							210



Liftcrane Jib Capacities

New York City Code
Jib No. 123 With 12 Ft. 6 in. Strut On
Boom No. 82LR
184,600 Lb. Crane Counterweight
44,000 Lb. Carbody Counterweight
360 Degree Rating

Meets
ANSI B30.5
Requirements



999 SERIES 2

40 Ft. JIB

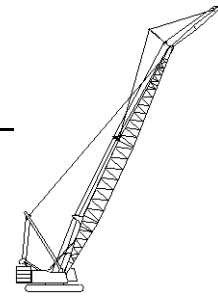
Jib Oper. Rad. Feet	0 Degree Offset			10 Degree Offset			20 Degree Offset			Jib Oper. Rad. Feet
	Boom Ang. Deg.	Jib Point Elev. Feet	Jib Capacity Pounds	Boom Ang. Deg.	Jib Point Elev. Feet	Jib Capacity Pounds	Boom Ang. Deg.	Jib Point Elev. Feet	Jib Capacity Pounds	
190 Ft. BOOM										
45	80.8	236.2	30,000 *							45
50	79.5	235.3	30,000 *							50
55	78.3	234.2	30,000 *	79.9	233.3	30,000*				55
60	77.0	233.1	30,000 *	78.6	232.1	30,000*	80.3	230.0	30,000*	60
65	75.7	231.8	30,000 *	77.4	230.8	30,000*	79.0	228.7	30,000*	65
70	74.4	230.4	30,000 *	76.1	229.4	30,000*	77.7	227.3	30,000*	70
75	73.1	228.8	30,000 *	74.8	227.9	30,000*	76.3	225.8	30,000*	75
80	71.8	227.2	30,000 *	73.5	226.2	30,000*	75.0	224.1	30,000*	80
85	70.5	225.4	30,000 *	72.1	224.4	30,000*	73.7	222.3	30,000*	85
90	69.2	223.5	30,000 *	70.8	222.5	30,000*	72.3	220.4	30,000*	90
100	66.5	219.3	30,000 *	68.1	218.3	30,000*	69.6	216.1	30,000*	100
110	63.8	214.5	30,000 *	65.4	213.5	30,000*	66.8	211.2	29,800*	110
120	60.9	209.1	30,000 *	62.5	208.0	30,000*	64.0	205.7	28,300*	120
130	58.0	203.0	30,000 *	59.6	201.9	30,000*	61.0	199.5	27,100*	130
140	55.1	196.2	28,300	56.6	195.1	28,700	58.0	192.6	26,000*	140
150	51.9	188.6	25,300	53.5	187.5	25,700	54.8	184.9	25,000*	150
160	48.7	180.1	22,800	50.2	178.9	23,100	51.5	176.2	23,400	160
170	45.3	170.6	20,500	46.8	169.2	20,800	48.0	166.4	21,100	170
180	41.6	159.7	18,500	43.1	158.3	18,800	44.2	155.2	19,000	180
190	37.7	147.4	16,700	39.1	145.8	17,000	40.1	142.4	17,100	190
200	33.3	133.0	15,100	34.7	131.2	15,300				200
210	28.4	115.8	13,700	29.7	113.8	13,800				210
220	22.5	94.1	12,400							220



Liftcrane Jib Capacities

New York City Code
Jib No. 123 With 12 Ft. 6 in. Strut On
Boom No. 82LR
184,600 Lb. Crane Counterweight
44,000 Lb. Carbody Counterweight
360 Degree Rating

Meets
ANSI B30.5
Requirements



999 SERIES 2

40 Ft. JIB

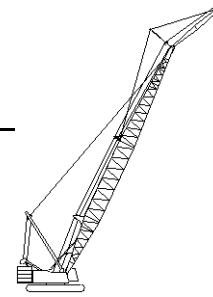
Jib Oper. Rad. Feet	0 Degree Offset			10 Degree Offset			20 Degree Offset			Jib Oper. Rad. Feet
	Boom Ang. Deg.	Jib Point Elev. Feet	Jib Capacity Pounds	Boom Ang. Deg.	Jib Point Elev. Feet	Jib Capacity Pounds	Boom Ang. Deg.	Jib Point Elev. Feet	Jib Capacity Pounds	
200 Ft. BOOM										
50	80.0	245.4	30,000 *							50
55	78.7	244.4	30,000 *	80.3	243.5	30,000*				55
60	77.5	243.3	30,000 *	79.1	242.4	30,000*	80.7	240.3	30,000*	60
65	76.3	242.1	30,000 *	77.9	241.1	30,000*	79.4	239.1	30,000*	65
70	75.1	240.8	30,000 *	76.7	239.8	30,000*	78.2	237.7	30,000*	70
75	73.8	239.3	30,000 *	75.4	238.3	30,000*	76.9	236.2	30,000*	75
80	72.6	237.7	30,000 *	74.2	236.8	30,000*	75.7	234.6	30,000*	80
85	71.4	236.0	30,000 *	72.9	235.1	30,000*	74.4	232.9	30,000*	85
90	70.1	234.2	30,000 *	71.6	233.2	30,000*	73.1	231.1	30,000*	90
100	67.5	230.2	30,000 *	69.1	229.2	30,000*	70.5	227.0	30,000*	100
110	64.9	225.7	30,000 *	66.5	224.6	30,000*	67.9	222.4	30,000*	110
120	62.3	220.5	30,000 *	63.8	219.5	30,000*	65.2	217.2	28,900*	120
130	59.5	214.8	30,000 *	61.0	213.7	30,000*	62.4	211.3	27,600*	130
140	56.7	208.4	27,700	58.2	207.3	28,200	59.5	204.8	26,500*	140
150	53.8	201.3	24,800	55.3	200.1	25,200	56.6	197.6	25,500*	150
160	50.8	193.4	22,200	52.2	192.2	22,600	53.5	189.5	23,000	160
170	47.6	184.5	20,000	49.0	183.3	20,300	50.2	180.5	20,600	170
180	44.3	174.6	18,000	45.7	173.3	18,300	46.8	170.3	18,500	180
190	40.7	163.4	16,200	42.1	162.0	16,500	43.2	158.8	16,700	190
200	36.9	150.7	14,600	38.2	149.1	14,800				200
210	32.6	135.9	13,200	33.9	134.1	13,400				210
220	27.8	118.2	11,800							220
230	22.0	96.0	10,600							230



Liftcrane Jib Capacities

New York City Code
Jib No. 123 With 12 Ft. 6 in. Strut On
Boom No. 82LR
184,600 Lb. Crane Counterweight
44,000 Lb. Carbody Counterweight
360 Degree Rating

Meets
ANSI B30.5
Requirements



999 SERIES 2

40 Ft. JIB

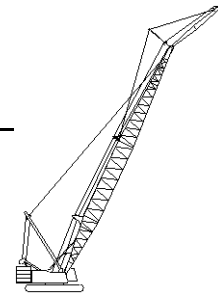
Jib Oper. Rad. Feet	0 Degree Offset			10 Degree Offset			20 Degree Offset			Jib Oper. Rad. Feet
	Boom Ang. Deg.	Jib Point Elev. Feet	Jib Capacity Pounds	Boom Ang. Deg.	Jib Point Elev. Feet	Jib Capacity Pounds	Boom Ang. Deg.	Jib Point Elev. Feet	Jib Capacity Pounds	
210 Ft. BOOM										
50	80.4	255.6	30,000 *							50
55	79.2	254.7	30,000 *	80.7	253.7	30,000*				55
60	78.0	253.6	30,000 *	79.6	252.6	30,000*				60
65	76.9	252.4	30,000 *	78.4	251.4	30,000*	79.9	249.3	30,000*	65
70	75.7	251.1	30,000 *	77.2	250.2	30,000*	78.7	248.0	30,000*	70
75	74.5	249.7	30,000 *	76.0	248.8	30,000*	77.5	246.6	30,000*	75
80	73.3	248.2	30,000 *	74.8	247.3	30,000*	76.3	245.1	30,000*	80
85	72.1	246.6	30,000 *	73.6	245.6	30,000*	75.1	243.5	30,000*	85
90	70.9	244.9	30,000 *	72.4	243.9	30,000*	73.8	241.7	30,000*	90
100	68.5	241.0	30,000 *	70.0	240.0	30,000*	71.4	237.8	30,000*	100
110	66.0	236.7	30,000 *	67.5	235.7	30,000*	68.9	233.4	30,000*	110
120	63.5	231.8	30,000 *	64.9	230.8	30,000*	66.3	228.5	29,500*	120
130	60.9	226.4	30,000 *	62.3	225.3	30,000*	63.6	223.0	28,200*	130
140	58.2	220.4	27,400	59.6	219.3	27,900	60.9	216.8	27,100*	140
150	55.5	213.7	24,400	56.9	212.5	24,900	58.2	210.0	25,300	150
160	52.6	206.2	21,800	54.0	205.0	22,200	55.3	202.4	22,600	160
170	49.7	198.0	19,600	51.1	196.7	19,900	52.2	194.0	20,300	170
180	46.6	188.8	17,600	47.9	187.5	17,900	49.1	184.6	18,200	180
190	43.3	178.6	15,800	44.7	177.2	16,100	45.7	174.1	16,300	190
200	39.8	167.0	14,200	41.1	165.5	14,500	42.2	162.3	14,700	200
210	36.1	153.9	12,800	37.4	152.3	13,000				210
220	31.9	138.7	11,500	33.2	136.9	11,600				220
230	27.2	120.6	10,300							230
240	21.6	97.8	9,200							240



Liftcrane Jib Capacities

New York City Code
Jib No. 123 With 12 Ft. 6 in. Strut On
Boom No. 82LR
184,600 Lb. Crane Counterweight
44,000 Lb. Carbody Counterweight
360 Degree Rating

Meets
ANSI B30.5
Requirements



999 SERIES 2

40 Ft. JIB

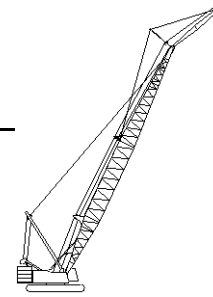
Jib Oper. Rad. Feet	0 Degree Offset			10 Degree Offset			20 Degree Offset			Jib Oper. Rad. Feet
	Boom Ang. Deg.	Jib Point Elev. Feet	Jib Capacity Pounds	Boom Ang. Deg.	Jib Point Elev. Feet	Jib Capacity Pounds	Boom Ang. Deg.	Jib Point Elev. Feet	Jib Capacity Pounds	
220 Ft. BOOM										
50	80.7	265.8	30,000 *							50
55	79.6	264.9	30,000 *							55
60	78.5	263.8	30,000 *	80.0	262.9	30,000*				60
65	77.4	262.7	30,000 *	78.8	261.7	30,000*	80.3	259.6	30,000*	65
70	76.3	261.5	30,000 *	77.7	260.5	30,000*	79.1	258.4	30,000*	70
75	75.1	260.1	30,000 *	76.6	259.2	30,000*	78.0	257.0	30,000*	75
80	74.0	258.7	30,000 *	75.4	257.7	30,000*	76.8	255.6	30,000*	80
85	72.8	257.1	30,000 *	74.3	256.1	30,000*	75.7	254.0	30,000*	85
90	71.7	255.5	30,000 *	73.1	254.5	30,000*	74.5	252.3	30,000*	90
100	69.3	251.8	30,000 *	70.8	250.8	30,000*	72.1	248.6	30,000*	100
110	67.0	247.7	30,000 *	68.4	246.6	30,000*	69.7	244.4	30,000*	110
120	64.6	243.0	27,700	66.0	242.0	28,600	67.3	239.7	29,500	120
130	62.1	237.9	23,800	63.5	236.8	24,700	64.8	234.4	25,400	130
140	59.6	232.1	20,600	61.0	231.0	21,300	62.2	228.6	21,900	140
150	57.0	225.8	17,700	58.3	224.7	18,400	59.6	222.2	19,000	150
160	54.3	218.8	15,300	55.7	217.6	15,900	56.9	215.1	16,400	160
170	51.5	211.1	13,100	52.9	209.8	13,600	54.0	207.2	14,100	170
180	48.6	202.5	11,200	50.0	201.2	11,700	51.1	198.4	12,100	180
190	45.6	193.0	9,500	46.9	191.7	9,900	48.0	188.7	10,300	190
200	42.4	182.4	8,000	43.7	181.0	8,400	44.7	177.9	8,700	200
210	39.0	170.5	6,600	40.3	169.0	6,900	41.2	165.7	7,200	210
220	35.3	157.0	5,400	36.6	155.4	5,600				220
230	31.3	141.5	4,200	32.4	139.6	4,400				230



Liftcrane Jib Capacities

New York City Code
 Jib No. 123 With 12 Ft. 6 in. Strut On
 Boom No. 82LR
 184,600 Lb. Crane Counterweight
 44,000 Lb. Carbody Counterweight
 360 Degree Rating

Meets
 ANSI B30.5
 Requirements



999 SERIES 2

40 Ft. JIB

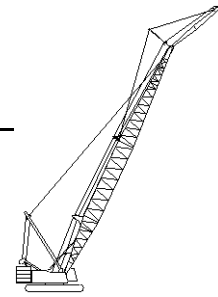
Jib Oper. Rad. Feet	0 Degree Offset			10 Degree Offset			20 Degree Offset			Jib Oper. Rad. Feet
	Boom Ang. Deg.	Jib Point Elev. Feet	Jib Capacity Pounds	Boom Ang. Deg.	Jib Point Elev. Feet	Jib Capacity Pounds	Boom Ang. Deg.	Jib Point Elev. Feet	Jib Capacity Pounds	
230 Ft. BOOM										
55	80.0	275.0	30,000 *							55
60	78.9	274.0	30,000 *	80.3	273.1	30,000*				60
65	77.9	273.0	30,000 *	79.3	272.0	30,000*	80.6	269.9	30,000*	65
70	76.8	271.8	30,000 *	78.2	270.8	30,000*	79.5	268.7	30,000*	70
75	75.7	270.5	30,000 *	77.1	269.5	30,000*	78.4	267.4	30,000*	75
80	74.6	269.1	30,000 *	76.0	268.1	30,000*	77.3	266.0	30,000*	80
85	73.5	267.6	30,000 *	74.9	266.6	30,000*	76.2	264.5	30,000*	85
90	72.4	266.0	30,000 *	73.8	265.0	30,000*	75.1	262.8	30,000*	90
100	70.1	262.5	30,000 *	71.5	261.5	30,000*	72.8	259.3	30,000*	100
110	67.9	258.6	30,000 *	69.2	257.5	30,000*	70.5	255.3	30,000*	110
120	65.6	254.1	27,200	66.9	253.1	28,100	68.2	250.8	29,000	120
130	63.2	249.2	23,300	64.6	248.1	24,100	65.8	245.8	24,900	130
140	60.8	243.7	20,000	62.1	242.6	20,800	63.4	240.2	21,500	140
150	58.3	237.7	17,200	59.7	236.6	17,900	60.9	234.1	18,500	150
160	55.8	231.1	14,700	57.1	229.9	15,300	58.3	227.4	15,900	160
170	53.2	223.8	12,600	54.5	222.6	13,100	55.6	220.0	13,600	170
180	50.5	215.8	10,700	51.8	214.5	11,200	52.9	211.8	11,600	180
190	47.7	206.9	9,000	48.9	205.6	9,400	50.0	202.7	9,800	190
200	44.7	197.1	7,400	46.0	195.7	7,800	47.0	192.7	8,200	200
210	41.6	186.2	6,100	42.8	184.7	6,400	43.8	181.6	6,700	210
220	38.3	174.0	4,800	39.5	172.4	5,100	40.4	169.0	5,400	220



Liftcrane Jib Capacities

New York City Code
Jib No. 123 With 12 Ft. 6 in. Strut On
Boom No. 82LR
184,600 Lb. Crane Counterweight
44,000 Lb. Carbody Counterweight
360 Degree Rating

Meets
ANSI B30.5
Requirements



999 SERIES 2

40 Ft. JIB

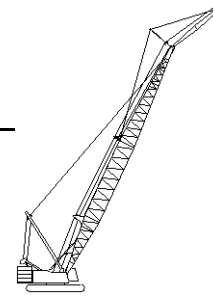
Jib Oper. Rad. Feet	0 Degree Offset			10 Degree Offset			20 Degree Offset			Jib Oper. Rad. Feet
	Boom Ang. Deg.	Jib Point Elev. Feet	Jib Capacity Pounds	Boom Ang. Deg.	Jib Point Elev. Feet	Jib Capacity Pounds	Boom Ang. Deg.	Jib Point Elev. Feet	Jib Capacity Pounds	
240 Ft. BOOM										
55	80.4	285.2	30,000 *							55
60	79.3	284.3	30,000 *	80.7	283.3	30,000*				60
65	78.3	283.2	30,000 *	79.7	282.2	30,000*	81.0	280.1	30,000*	65
70	77.2	282.1	30,000 *	78.6	281.1	30,000*	79.9	278.9	30,000*	70
75	76.2	280.8	30,000 *	77.6	279.8	30,000*	78.9	277.7	30,000*	75
80	75.1	279.5	30,000 *	76.5	278.5	30,000*	77.8	276.3	30,000*	80
85	74.1	278.1	30,000 *	75.4	277.1	30,000*	76.7	274.9	30,000*	85
90	73.0	276.5	30,000 *	74.4	275.5	30,000*	75.7	273.3	30,000*	90
100	70.9	273.2	30,000 *	72.2	272.1	30,000*	73.5	269.9	30,000*	100
110	68.7	269.4	30,000 *	70.0	268.3	30,000*	71.3	266.1	30,000*	110
120	66.5	265.1	26,500	67.8	264.1	27,500	69.0	261.8	28,400	120
130	64.2	260.4	22,600	65.5	259.3	23,500	66.8	257.0	24,300	130
140	61.9	255.2	19,300	63.2	254.1	20,100	64.4	251.7	20,800	140
150	59.6	249.5	16,400	60.9	248.3	17,200	62.1	245.9	17,800	150
160	57.2	243.2	14,000	58.5	242.0	14,600	59.6	239.5	15,200	160
170	54.7	236.3	11,800	56.0	235.1	12,400	57.1	232.5	12,900	170
180	52.2	228.7	9,900	53.4	227.4	10,400	54.5	224.8	10,900	180
190	49.5	220.4	8,200	50.8	219.1	8,700	51.8	216.3	9,100	190
200	46.8	211.2	6,700	48.0	209.9	7,100	49.0	207.0	7,500	200
210	43.9	201.1	5,300	45.1	199.7	5,700	46.0	196.6	6,000	210
220	40.8	189.9	4,100	42.0	188.4	4,400	42.9	185.1	4,700	220



Liftcrane Jib Capacities

New York City Code
 Jib No. 123 With 12 Ft. 6 in. Strut On
 Boom No. 82LR
 184,600 Lb. Crane Counterweight
 44,000 Lb. Carbody Counterweight
 360 Degree Rating

Meets
 ANSI B30.5
 Requirements



999 SERIES 2

40 Ft. JIB

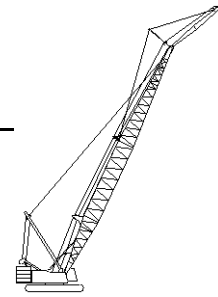
Jib Oper. Rad. Feet	0 Degree Offset			10 Degree Offset			20 Degree Offset			Jib Oper. Rad. Feet
	Boom Ang. Deg.	Jib Point Elev. Feet	Jib Capacity Pounds	Boom Ang. Deg.	Jib Point Elev. Feet	Jib Capacity Pounds	Boom Ang. Deg.	Jib Point Elev. Feet	Jib Capacity Pounds	
250 Ft. BOOM										
55	80.7	295.4	30,000 *							55
60	79.7	294.4	30,000 *	81.0	293.5	30,000*				60
65	78.7	293.4	30,000 *	80.0	292.4	30,000*				65
70	77.7	292.3	30,000 *	79.0	291.3	30,000*	80.3	289.2	30,000*	70
75	76.7	291.1	30,000 *	78.0	290.2	30,000*	79.3	288.0	30,000*	75
80	75.7	289.9	30,000 *	77.0	288.9	30,000*	78.2	286.7	30,000*	80
85	74.6	288.5	30,000 *	76.0	287.5	30,000*	77.2	285.3	30,000*	85
90	73.6	287.0	30,000 *	74.9	286.0	30,000*	76.2	283.8	30,000*	90
100	71.6	283.8	30,000 *	72.9	282.7	30,000*	74.1	280.5	30,000*	100
110	69.5	280.1	30,000 *	70.8	279.1	30,000*	72.0	276.8	30,000*	110
120	67.3	276.0	25,900	68.6	275.0	26,900	69.8	272.7	27,900	120
130	65.2	271.5	22,000	66.5	270.4	22,900	67.6	268.1	23,800	130
140	63.0	266.5	18,700	64.2	265.4	19,500	65.4	263.1	20,300	140
150	60.7	261.1	15,900	62.0	259.9	16,600	63.1	257.5	17,300	150
160	58.5	255.1	13,400	59.7	253.9	14,100	60.8	251.4	14,700	160
170	56.1	248.5	11,200	57.3	247.3	11,900	58.4	244.8	12,400	170
180	53.7	241.3	9,300	54.9	240.1	9,900	56.0	237.5	10,400	180
190	51.2	233.5	7,600	52.4	232.2	8,100	53.4	229.5	8,600	190
200	48.6	224.9	6,100	49.8	223.6	6,600	50.8	220.7	7,000	200
210	45.9	215.4	4,700	47.1	214.1	5,100	48.0	211.1	5,500	210
220							45.1	200.5	4,200	220



Liftcrane Jib Capacities

New York City Code
Jib No. 123 With 12 Ft. 6 in. Strut On
Boom No. 82LR
184,600 Lb. Crane Counterweight
44,000 Lb. Carbody Counterweight
360 Degree Rating

Meets
ANSI B30.5
Requirements



999 SERIES 2

40 Ft. JIB

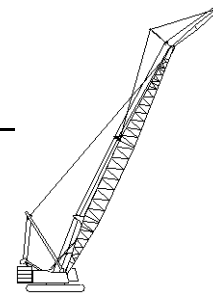
Jib Oper. Rad. Feet	0 Degree Offset			10 Degree Offset			20 Degree Offset			Jib Oper. Rad. Feet
	Boom Ang. Deg.	Jib Point Elev. Feet	Jib Capacity Pounds	Boom Ang. Deg.	Jib Point Elev. Feet	Jib Capacity Pounds	Boom Ang. Deg.	Jib Point Elev. Feet	Jib Capacity Pounds	
260 Ft. BOOM										
55	81.0	305.5	30,000 *							55
60	80.0	304.6	30,000 *							60
65	79.1	303.6	30,000 *	80.4	302.7	30,000*				65
70	78.1	302.6	30,000 *	79.4	301.6	30,000*	80.6	299.4	30,000*	70
75	77.1	301.4	30,000 *	78.4	300.4	30,000*	79.6	298.3	30,000*	75
80	76.2	300.2	30,000 *	77.4	299.2	30,000*	78.6	297.0	30,000*	80
85	75.2	298.9	30,000 *	76.4	297.9	30,000*	77.6	295.7	30,000*	85
90	74.2	297.4	30,000 *	75.4	296.4	30,000*	76.7	294.2	30,000*	90
100	72.2	294.3	30,000 *	73.4	293.3	30,000*	74.6	291.1	30,000*	100
110	70.2	290.8	30,000 *	71.4	289.8	30,000*	72.6	287.5	30,000*	110
120	68.1	286.9	25,300	69.4	285.8	26,400	70.5	283.6	27,400	120
130	66.1	282.5	21,400	67.3	281.5	22,400	68.4	279.2	23,300	130
140	64.0	277.8	18,100	65.2	276.7	19,000	66.3	274.3	19,800	140
150	61.8	272.5	15,300	63.0	271.4	16,100	64.1	269.0	16,800	150
160	59.6	266.8	12,800	60.8	265.7	13,500	61.9	263.2	14,200	160
170	57.4	260.5	10,600	58.6	259.4	11,300	59.6	256.8	11,900	170
180	55.1	253.7	8,700	56.3	252.5	9,300	57.3	249.9	9,900	180
190	52.7	246.2	7,000	53.9	245.0	7,600	54.9	242.3	8,100	190
200	50.3	238.1	5,500	51.4	236.9	6,000	52.4	234.1	6,400	200
210	47.7	229.3	4,100	48.9	227.9	4,600	49.8	225.1	5,000	210
270 Ft. BOOM										
60	80.4	314.8	30,000 *							60
65	79.4	313.8	30,000 *	80.7	312.8	30,000*				65
70	78.5	312.8	30,000 *	79.7	311.8	30,000*	80.9	309.7	30,000*	70
75	77.6	311.7	30,000 *	78.8	310.7	30,000*	80.0	308.5	30,000*	75
80	76.6	310.5	30,000 *	77.8	309.5	30,000*	79.0	307.3	30,000*	80
85	75.7	309.2	30,000 *	76.9	308.2	30,000*	78.1	306.0	30,000*	85
90	74.7	307.9	30,000 *	75.9	306.8	30,000*	77.1	304.6	30,000*	90
100	72.8	304.8	30,000 *	74.0	303.8	30,000*	75.2	301.6	30,000*	100
110	70.8	301.4	29,400	72.0	300.4	30,000*	73.2	298.2	30,000*	110
120	68.9	297.7	24,700	70.1	296.6	25,900	71.2	294.3	26,900	120
130	66.9	293.5	20,800	68.1	292.4	21,800	69.2	290.1	22,800	130
140	64.9	288.9	17,500	66.0	287.8	18,400	67.1	285.5	19,300	140
150	62.8	283.9	14,700	64.0	282.8	15,500	65.1	280.4	16,300	150
160	60.7	278.4	12,200	61.9	277.3	13,000	62.9	274.8	13,700	160
170	58.6	272.4	10,100	59.7	271.2	10,700	60.8	268.7	11,400	170
180	56.4	265.9	8,100	57.5	264.7	8,800	58.5	262.1	9,300	180
190	54.1	258.8	6,400	55.2	257.6	7,000	56.2	254.9	7,500	190
200	51.8	251.1	4,900	52.9	249.8	5,400	53.9	247.1	5,900	200
210				50.5	241.4	4,000	51.4	238.6	4,400	210



Liftcrane Jib Capacities

New York City Code
Jib No. 123 With 12 Ft. 6 in. Strut On
Boom No. 82LR
184,600 Lb. Crane Counterweight
44,000 Lb. Carbody Counterweight
360 Degree Rating

Meets
ANSI B30.5
Requirements



999 SERIES 2

40 Ft. JIB

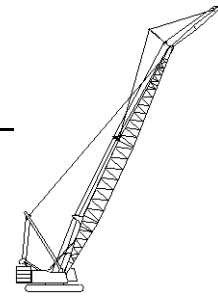
Jib Oper. Rad. Feet	0 Degree Offset			10 Degree Offset			20 Degree Offset			Jib Oper. Rad. Feet
	Boom Ang. Deg.	Jib Point Elev. Feet	Jib Capacity Pounds	Boom Ang. Deg.	Jib Point Elev. Feet	Jib Capacity Pounds	Boom Ang. Deg.	Jib Point Elev. Feet	Jib Capacity Pounds	
280 Ft. BOOM										
60	80.7	324.9	30,000 *							60
65	79.8	324.0	30,000 *	81.0	323.0	30,000*				65
70	78.9	323.0	30,000 *	80.1	322.0	30,000*				70
75	77.9	322.0	30,000 *	79.1	321.0	30,000*	80.3	318.8	30,000*	75
80	77.0	320.8	30,000 *	78.2	319.8	30,000*	79.4	317.6	30,000*	80
85	76.1	319.6	30,000 *	77.3	318.6	30,000*	78.4	316.4	30,000*	85
90	75.2	318.2	30,000 *	76.4	317.2	30,000*	77.5	315.0	30,000*	90
100	73.3	315.3	30,000 *	74.5	314.3	30,000*	75.6	312.1	30,000*	100
110	71.5	312.0	28,700	72.6	311.0	30,000*	73.7	308.8	30,000*	110
120	69.6	308.4	24,000	70.7	307.4	25,200	71.8	305.1	26,300	120
130	67.6	304.4	20,100	68.8	303.3	21,200	69.9	301.0	22,200	130
140	65.7	300.0	16,800	66.8	298.9	17,800	67.9	296.5	18,600	140
150	63.7	295.1	13,900	64.9	294.0	14,800	65.9	291.6	15,600	150
160	61.7	289.8	11,500	62.8	288.7	12,300	63.9	286.3	13,000	160
170	59.6	284.1	9,300	60.8	283.0	10,000	61.8	280.5	10,700	170
180	57.5	277.9	7,400	58.7	276.7	8,100	59.7	274.2	8,700	180
190	55.4	271.1	5,700	56.5	269.9	6,300	57.5	267.3	6,800	190
200	53.2	263.8	4,200	54.3	262.6	4,700	55.2	259.9	5,200	200
290 Ft. BOOM										
60	81.0	335.1	30,000 *							60
65	80.1	334.2	30,000 *							65
70	79.2	333.2	30,000 *	80.4	332.2	30,000*				70
75	78.3	332.2	30,000 *	79.5	331.2	30,000*	80.6	329.0	30,000*	75
80	77.4	331.1	30,000 *	78.6	330.1	30,000*	79.7	327.9	30,000*	80
85	76.5	329.9	30,000 *	77.7	328.9	30,000*	78.8	326.7	30,000*	85
90	75.7	328.6	30,000 *	76.8	327.6	30,000*	77.9	325.4	30,000*	90
100	73.9	325.8	30,000 *	75.0	324.7	30,000*	76.1	322.5	30,000*	100
110	72.0	322.6	28,100	73.2	321.6	29,500	74.3	319.3	30,000*	110
120	70.2	319.1	23,400	71.3	318.0	24,700	72.4	315.8	25,800	120
130	68.4	315.2	19,500	69.5	314.1	20,600	70.5	311.8	21,600	130
140	66.5	310.9	16,200	67.6	309.9	17,200	68.6	307.5	18,100	140
150	64.6	306.3	13,300	65.7	305.2	14,300	66.7	302.8	15,100	150
160	62.6	301.2	10,900	63.7	300.1	11,700	64.7	297.7	12,500	160
170	60.7	295.7	8,700	61.8	294.6	9,500	62.7	292.1	10,200	170
180	58.6	289.7	6,800	59.7	288.6	7,500	60.7	286.0	8,100	180
190	56.6	283.3	5,100	57.7	282.1	5,700	58.6	279.5	6,300	190
200				55.5	275.0	4,200	56.5	272.4	4,700	200



Liftcrane Jib Capacities

New York City Code
Jib No. 123 With 12 Ft. 6 in. Strut On
Boom No. 82LR
184,600 Lb. Crane Counterweight
44,000 Lb. Carbody Counterweight
360 Degree Rating

Meets
ANSI B30.5
Requirements



999 SERIES 2

40 Ft. JIB

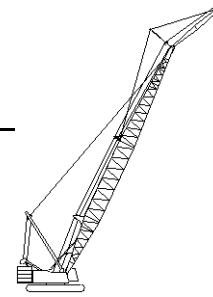
Jib Oper. Rad. Feet	0 Degree Offset			10 Degree Offset			20 Degree Offset			Jib Oper. Rad. Feet
	Boom Ang. Deg.	Jib Point Elev. Feet	Jib Capacity Pounds	Boom Ang. Deg.	Jib Point Elev. Feet	Jib Capacity Pounds	Boom Ang. Deg.	Jib Point Elev. Feet	Jib Capacity Pounds	
300 Ft. BOOM										
65	80.4	344.4	30,000 *							65
70	79.5	343.4	30,000 *	80.6	342.4	30,000*				70
75	78.7	342.4	30,000 *	79.8	341.4	30,000*	80.9	339.2	30,000*	75
80	77.8	341.3	30,000 *	78.9	340.3	30,000*	80.0	338.1	30,000*	80
85	76.9	340.2	30,000 *	78.1	339.2	30,000*	79.1	337.0	30,000*	85
90	76.1	338.9	30,000 *	77.2	337.9	30,000*	78.3	335.7	30,000*	90
100	74.3	336.2	30,000 *	75.5	335.2	30,000*	76.5	332.9	30,000*	100
110	72.6	333.1	27,600	73.7	332.1	29,000	74.7	329.8	30,000*	110
120	70.8	329.7	22,800	71.9	328.7	24,100	73.0	326.4	25,300	120
130	69.0	326.0	18,900	70.1	324.9	20,100	71.1	322.6	21,100	130
140	67.2	321.9	15,600	68.3	320.8	16,600	69.3	318.5	17,600	140
150	65.4	317.4	12,700	66.4	316.3	13,700	67.4	313.9	14,600	150
160	63.5	312.5	10,300	64.6	311.4	11,100	65.6	309.0	11,900	160
170	61.6	307.2	8,100	62.7	306.0	8,900	63.6	303.6	9,600	170
180	59.7	301.4	6,200	60.7	300.3	6,900	61.7	297.8	7,600	180
190	57.7	295.2	4,500	58.7	294.1	5,100	59.7	291.5	5,700	190
200							57.6	284.7	4,100	200



Liftcrane Jib Capacities

New York City Code
Jib No. 123 With 12 Ft. 6 in. Strut On
Boom No. 82LR
184,600 Lb. Crane Counterweight
44,000 Lb. Carbody Counterweight
360 Degree Rating

Meets
ANSI B30.5
Requirements



999 SERIES 2

50 Ft. JIB

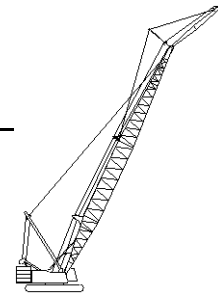
Jib Oper. Rad. Feet	0 Degree Offset			10 Degree Offset			20 Degree Offset			Jib Oper. Rad. Feet
	Boom Ang. Deg.	Jib Point Elev. Feet	Jib Capacity Pounds	Boom Ang. Deg.	Jib Point Elev. Feet	Jib Capacity Pounds	Boom Ang. Deg.	Jib Point Elev. Feet	Jib Capacity Pounds	
120 Ft. BOOM										
40	79.6	176.3	20,000*							40
45	77.9	175.2	20,000*	80.7	174.2	20,000*				45
50	76.2	173.9	20,000*	79.0	173.0	20,000*				50
55	74.4	172.5	20,000*	77.2	171.6	20,000*	80.0	169.4	20,000*	55
60	72.7	170.9	20,000*	75.5	170.0	20,000*	78.2	167.8	20,000*	60
65	70.9	169.2	20,000*	73.7	168.2	20,000*	76.4	166.0	20,000*	65
70	69.1	167.3	20,000*	71.9	166.3	20,000*	74.6	164.0	20,000*	70
75	67.3	165.2	20,000*	70.1	164.2	20,000*	72.7	161.9	20,000*	75
80	65.5	162.9	20,000*	68.2	161.8	20,000*	70.9	159.5	20,000*	80
85	63.6	160.4	20,000*	66.3	159.3	20,000*	68.9	157.0	20,000*	85
90	61.7	157.7	20,000*	64.4	156.6	20,000*	67.0	154.2	20,000*	90
100	57.8	151.6	20,000*	60.5	150.5	20,000*	63.0	148.0	20,000*	100
110	53.7	144.5	20,000*	56.4	143.3	20,000*	58.8	140.7	20,000*	110
120	49.4	136.3	20,000*	52.0	135.0	20,000*	54.3	132.2	19,700*	120
130	44.7	126.6	20,000*	47.3	125.3	20,000*	49.5	122.2	18,700*	130
140	39.6	115.2	20,000*	42.2	113.7	20,000*	44.2	110.2	17,800*	140
150	33.9	101.3	20,000*	36.3	99.5	19,400*				150
160	27.1	83.6	20,000*	29.4	81.4	18,500*				160
130 Ft. BOOM										
40	80.2	186.5	20,000*							40
45	78.6	185.4	20,000*							45
50	76.9	184.3	20,000*	79.6	183.3	20,000*				50
55	75.3	182.9	20,000*	78.0	182.0	20,000*	80.6	179.7	20,000*	55
60	73.7	181.5	20,000*	76.3	180.5	20,000*	78.9	178.2	20,000*	60
65	72.0	179.8	20,000*	74.6	178.8	20,000*	77.2	176.5	20,000*	65
70	70.3	178.0	20,000*	72.9	177.0	20,000*	75.5	174.7	20,000*	70
75	68.6	176.0	20,000*	71.2	175.0	20,000*	73.8	172.7	20,000*	75
80	66.9	173.9	20,000*	69.5	172.9	20,000*	72.0	170.5	20,000*	80
85	65.2	171.6	20,000*	67.8	170.5	20,000*	70.2	168.1	20,000*	85
90	63.4	169.1	20,000*	66.0	168.0	20,000*	68.4	165.6	20,000*	90
100	59.8	163.4	20,000*	62.3	162.3	20,000*	64.7	159.8	20,000*	100
110	56.0	156.9	20,000*	58.5	155.7	20,000*	60.9	153.1	20,000*	110
120	52.1	149.4	20,000*	54.6	148.2	20,000*	56.8	145.4	20,000*	120
130	47.9	140.7	20,000*	50.3	139.4	20,000*	52.5	136.4	19,300*	130
140	43.4	130.5	20,000*	45.8	129.1	20,000*	47.8	125.9	18,400*	140
150	38.5	118.6	20,000*	40.8	117.0	20,000*	42.7	113.4	17,600*	150
160	32.9	104.2	20,000*	35.2	102.4	19,200*				160
170	26.3	85.8	20,000*							170



Liftcrane Jib Capacities

New York City Code
Jib No. 123 With 12 Ft. 6 in. Strut On
Boom No. 82LR
184,600 Lb. Crane Counterweight
44,000 Lb. Carbody Counterweight
360 Degree Rating

Meets
ANSI B30.5
Requirements



999 SERIES 2

50 Ft. JIB

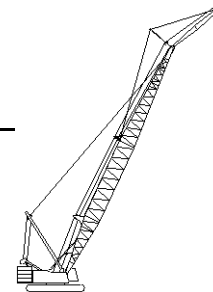
Jib Oper. Rad. Feet	0 Degree Offset			10 Degree Offset			20 Degree Offset			Jib Oper. Rad. Feet
	Boom Ang. Deg.	Jib Point Elev. Feet	Jib Capacity Pounds	Boom Ang. Deg.	Jib Point Elev. Feet	Jib Capacity Pounds	Boom Ang. Deg.	Jib Point Elev. Feet	Jib Capacity Pounds	
140 Ft. BOOM										
40	80.7	196.6	20,000 *							40
45	79.2	195.7	20,000 *							45
50	77.6	194.6	20,000 *	80.2	193.6	20,000*				50
55	76.1	193.3	20,000 *	78.6	192.3	20,000*				55
60	74.5	191.9	20,000 *	77.1	190.9	20,000*	79.5	188.6	20,000*	60
65	73.0	190.4	20,000 *	75.5	189.3	20,000*	77.9	187.0	20,000*	65
70	71.4	188.7	20,000 *	73.9	187.6	20,000*	76.3	185.3	20,000*	70
75	69.8	186.8	20,000 *	72.3	185.8	20,000*	74.7	183.4	20,000*	75
80	68.2	184.8	20,000 *	70.7	183.7	20,000*	73.0	181.4	20,000*	80
85	66.6	182.6	20,000 *	69.0	181.5	20,000*	71.4	179.1	20,000*	85
90	64.9	180.3	20,000 *	67.4	179.2	20,000*	69.7	176.7	20,000*	90
100	61.5	175.0	20,000 *	64.0	173.9	20,000*	66.2	171.4	20,000*	100
110	58.0	168.9	20,000 *	60.4	167.8	20,000*	62.7	165.2	20,000*	110
120	54.4	162.0	20,000 *	56.8	160.8	20,000*	58.9	158.1	20,000*	120
130	50.6	154.1	20,000 *	52.9	152.8	20,000*	55.0	149.9	19,900*	130
140	46.5	144.9	20,000 *	48.8	143.6	20,000*	50.8	140.5	18,900*	140
150	42.2	134.4	20,000 *	44.4	132.9	20,000*	46.3	129.5	18,100*	150
160	37.4	121.9	20,000 *	39.6	120.3	20,000*	41.3	116.6	17,500*	160
170	32.0	107.0	20,000 *	34.1	105.1	19,100*				170
180	25.6	88.0	19,900 *							180



Liftcrane Jib Capacities

New York City Code
 Jib No. 123 With 12 Ft. 6 in. Strut On
 Boom No. 82LR
 184,600 Lb. Crane Counterweight
 44,000 Lb. Carbody Counterweight
 360 Degree Rating

Meets
 ANSI B30.5
 Requirements



999 SERIES 2

50 Ft. JIB

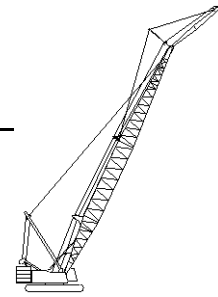
Jib Oper. Rad. Feet	0 Degree Offset			10 Degree Offset			20 Degree Offset			Jib Oper. Rad. Feet
	Boom Ang. Deg.	Jib Point Elev. Feet	Jib Capacity Pounds	Boom Ang. Deg.	Jib Point Elev. Feet	Jib Capacity Pounds	Boom Ang. Deg.	Jib Point Elev. Feet	Jib Capacity Pounds	
150 Ft. BOOM										
45	79.7	205.9	20,000*							45
50	78.3	204.8	20,000*	80.7	203.8	20,000*				50
55	76.8	203.6	20,000*	79.2	202.6	20,000*				55
60	75.3	202.3	20,000*	77.7	201.3	20,000*	80.1	199.0	20,000*	60
65	73.8	200.8	20,000*	76.2	199.8	20,000*	78.6	197.5	20,000*	65
70	72.4	199.2	20,000*	74.7	198.2	20,000*	77.0	195.9	20,000*	70
75	70.8	197.5	20,000*	73.2	196.4	20,000*	75.5	194.1	20,000*	75
80	69.3	195.6	20,000*	71.7	194.5	20,000*	74.0	192.1	20,000*	80
85	67.8	193.5	20,000*	70.1	192.5	20,000*	72.4	190.0	20,000*	85
90	66.2	191.3	20,000*	68.6	190.2	20,000*	70.8	187.8	20,000*	90
100	63.1	186.4	20,000*	65.4	185.3	20,000*	67.6	182.8	20,000*	100
110	59.8	180.7	20,000*	62.1	179.6	20,000*	64.2	177.0	20,000*	110
120	56.4	174.3	20,000*	58.7	173.1	20,000*	60.8	170.4	20,000*	120
130	52.9	167.0	20,000*	55.1	165.7	20,000*	57.2	162.9	20,000*	130
140	49.2	158.6	20,000*	51.4	157.3	20,000*	53.4	154.3	19,500*	140
150	45.3	149.1	20,000*	47.4	147.7	20,000*	49.3	144.5	18,700*	150
160	41.0	138.1	20,000*	43.2	136.5	20,000*	44.9	133.0	17,900*	160
170	36.4	125.2	20,000*	38.5	123.5	19,800*	40.1	119.6	17,300*	170
180	31.2	109.7	20,000*	33.1	107.7	18,900*				180
190	24.9	90.2	18,500							190



Liftcrane Jib Capacities

New York City Code
Jib No. 123 With 12 Ft. 6 in. Strut On
Boom No. 82LR
184,600 Lb. Crane Counterweight
44,000 Lb. Carbody Counterweight
360 Degree Rating

Meets
ANSI B30.5
Requirements



999 SERIES 2

50 Ft. JIB

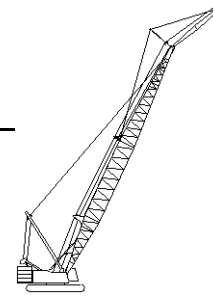
Jib Oper. Rad. Feet	0 Degree Offset			10 Degree Offset			20 Degree Offset			Jib Oper. Rad. Feet
	Boom Ang. Deg.	Jib Point Elev. Feet	Jib Capacity Pounds	Boom Ang. Deg.	Jib Point Elev. Feet	Jib Capacity Pounds	Boom Ang. Deg.	Jib Point Elev. Feet	Jib Capacity Pounds	
160 Ft. BOOM										
45	80.2	216.1	20,000 *							45
50	78.8	215.0	20,000 *							50
55	77.4	213.9	20,000 *	79.7	212.9	20,000*				55
60	76.0	212.7	20,000 *	78.3	211.6	20,000*	80.6	209.3	20,000*	60
65	74.6	211.3	20,000 *	76.9	210.2	20,000*	79.1	207.9	20,000*	65
70	73.2	209.8	20,000 *	75.5	208.7	20,000*	77.7	206.3	20,000*	70
75	71.8	208.1	20,000 *	74.0	207.0	20,000*	76.2	204.6	20,000*	75
80	70.4	206.3	20,000 *	72.6	205.2	20,000*	74.8	202.8	20,000*	80
85	68.9	204.4	20,000 *	71.1	203.3	20,000*	73.3	200.8	20,000*	85
90	67.4	202.3	20,000 *	69.7	201.2	20,000*	71.8	198.7	20,000*	90
100	64.4	197.6	20,000 *	66.7	196.5	20,000*	68.8	194.0	20,000*	100
110	61.4	192.3	20,000 *	63.6	191.2	20,000*	65.6	188.6	20,000*	110
120	58.2	186.3	20,000 *	60.4	185.1	20,000*	62.4	182.4	20,000*	120
130	54.9	179.5	20,000 *	57.1	178.2	20,000*	59.0	175.4	20,000*	130
140	51.5	171.8	20,000 *	53.6	170.5	20,000*	55.5	167.5	20,000*	140
150	47.9	163.0	20,000 *	50.0	161.7	20,000*	51.8	158.6	19,200*	150
160	44.1	153.1	20,000 *	46.2	151.6	20,000*	47.9	148.3	18,400*	160
170	40.0	141.7	20,000 *	42.0	140.1	20,000*	43.6	136.5	17,800*	170
180	35.5	128.3	19,800	37.4	126.6	19,600*				180
190	30.4	112.4	18,000	32.2	110.3	18,200				190
200	24.3	92.3	16,400							200



Liftcrane Jib Capacities

New York City Code
 Jib No. 123 With 12 Ft. 6 in. Strut On
 Boom No. 82LR
 184,600 Lb. Crane Counterweight
 44,000 Lb. Carbody Counterweight
 360 Degree Rating

Meets
 ANSI B30.5
 Requirements



999 SERIES 2

50 Ft. JIB

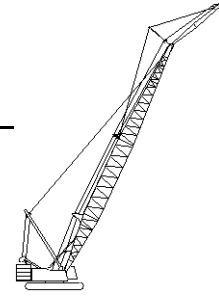
Jib Oper. Rad. Feet	0 Degree Offset			10 Degree Offset			20 Degree Offset			Jib Oper. Rad. Feet
	Boom Ang. Deg.	Jib Point Elev. Feet	Jib Capacity Pounds	Boom Ang. Deg.	Jib Point Elev. Feet	Jib Capacity Pounds	Boom Ang. Deg.	Jib Point Elev. Feet	Jib Capacity Pounds	
170 Ft. BOOM										
45	80.7	226.2	20,000 *							45
50	79.3	225.3	20,000 *							50
55	78.0	224.2	20,000 *	80.2	223.1	20,000*				55
60	76.7	223.0	20,000 *	78.9	221.9	20,000*	81.0	219.6	20,000*	60
65	75.3	221.7	20,000 *	77.5	220.6	20,000*	79.6	218.2	20,000*	65
70	74.0	220.2	20,000 *	76.2	219.2	20,000*	78.3	216.8	20,000*	70
75	72.6	218.6	20,000 *	74.8	217.6	20,000*	76.9	215.2	20,000*	75
80	71.3	216.9	20,000 *	73.4	215.9	20,000*	75.5	213.4	20,000*	80
85	69.9	215.1	20,000 *	72.0	214.0	20,000*	74.1	211.6	20,000*	85
90	68.5	213.1	20,000 *	70.6	212.0	20,000*	72.7	209.5	20,000*	90
100	65.7	208.7	20,000 *	67.8	207.6	20,000*	69.8	205.1	20,000*	100
110	62.8	203.7	20,000 *	64.9	202.6	20,000*	66.9	200.0	20,000*	110
120	59.8	198.1	20,000 *	61.9	196.9	20,000*	63.8	194.2	20,000*	120
130	56.7	191.7	20,000 *	58.8	190.5	20,000*	60.7	187.7	20,000*	130
140	53.6	184.5	20,000 *	55.6	183.2	20,000*	57.4	180.3	20,000*	140
150	50.2	176.4	20,000 *	52.3	175.1	20,000*	54.0	172.1	19,600*	150
160	46.7	167.3	20,000 *	48.7	165.9	20,000*	50.4	162.7	18,900*	160
170	43.0	157.0	20,000 *	45.0	155.5	20,000*	46.6	152.0	18,200*	170
180	39.0	145.2	19,500	40.9	143.5	19,800	42.4	139.8	17,600*	180
190	34.6	131.4	17,700	36.5	129.6	17,900				190
200	29.6	115.0	16,100	31.4	112.9	16,300				200
210	23.7	94.3	14,600							210



Liftcrane Jib Capacities

New York City Code
Jib No. 123 With 12 Ft. 6 in. Strut On
Boom No. 82LR
184,600 Lb. Crane Counterweight
44,000 Lb. Carbody Counterweight
360 Degree Rating

Meets
ANSI B30.5
Requirements



999 SERIES 2

50 Ft. JIB

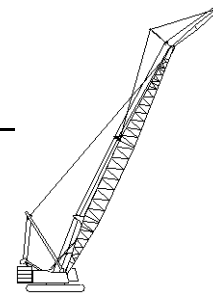
Jib Oper. Rad. Feet	0 Degree Offset			10 Degree Offset			20 Degree Offset			Jib Oper. Rad. Feet
	Boom Ang. Deg.	Jib Point Elev. Feet	Jib Capacity Pounds	Boom Ang. Deg.	Jib Point Elev. Feet	Jib Capacity Pounds	Boom Ang. Deg.	Jib Point Elev. Feet	Jib Capacity Pounds	
180 Ft. BOOM										
50	79.8	235.5	20,000 *							50
55	78.5	234.4	20,000 *	80.6	233.4	20,000*				55
60	77.3	233.3	20,000 *	79.4	232.2	20,000*				60
65	76.0	232.0	20,000 *	78.1	231.0	20,000*	80.1	228.6	20,000*	65
70	74.7	230.6	20,000 *	76.8	229.6	20,000*	78.8	227.2	20,000*	70
75	73.4	229.1	20,000 *	75.5	228.1	20,000*	77.5	225.6	20,000*	75
80	72.1	227.5	20,000 *	74.2	226.4	20,000*	76.2	224.0	20,000*	80
85	70.8	225.8	20,000 *	72.9	224.7	20,000*	74.8	222.2	20,000*	85
90	69.5	223.9	20,000 *	71.5	222.8	20,000*	73.5	220.3	20,000*	90
100	66.8	219.7	20,000 *	68.8	218.6	20,000*	70.8	216.1	20,000*	100
110	64.1	215.0	20,000 *	66.1	213.8	20,000*	68.0	211.2	20,000*	110
120	61.3	209.6	20,000 *	63.3	208.5	20,000*	65.1	205.8	20,000*	120
130	58.4	203.6	20,000 *	60.4	202.4	20,000*	62.2	199.7	20,000*	130
140	55.4	196.9	20,000 *	57.4	195.7	20,000*	59.1	192.8	20,000*	140
150	52.3	189.4	20,000 *	54.2	188.1	20,000*	56.0	185.1	20,000*	150
160	49.1	181.0	20,000 *	51.0	179.6	20,000*	52.6	176.5	19,300*	160
170	45.7	171.5	20,000 *	47.5	170.1	20,000*	49.1	166.7	18,600*	170
180	42.0	160.8	19,100	43.9	159.3	19,400	45.4	155.7	18,000*	180
190	38.1	148.6	17,300	39.9	146.9	17,600	41.3	143.0	17,500*	190
200	33.8	134.4	15,700	35.6	132.5	16,000				200
210	29.0	117.5	14,300	30.6	115.3	14,500				210
220	23.2	96.3	13,000							220



Liftcrane Jib Capacities

New York City Code
 Jib No. 123 With 12 Ft. 6 in. Strut On
 Boom No. 82LR
 184,600 Lb. Crane Counterweight
 44,000 Lb. Carbody Counterweight
 360 Degree Rating

Meets
 ANSI B30.5
 Requirements



999 SERIES 2

50 Ft. JIB

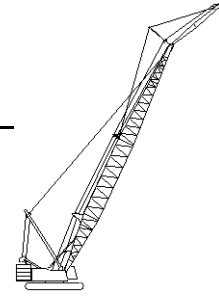
Jib Oper. Rad. Feet	0 Degree Offset			10 Degree Offset			20 Degree Offset			Jib Oper. Rad. Feet
	Boom Ang. Deg.	Jib Point Elev. Feet	Jib Capacity Pounds	Boom Ang. Deg.	Jib Point Elev. Feet	Jib Capacity Pounds	Boom Ang. Deg.	Jib Point Elev. Feet	Jib Capacity Pounds	
190 Ft. BOOM										
50	80.2	245.6	20,000*							50
55	79.0	244.6	20,000*	81.0	243.6	20,000*				55
60	77.8	243.6	20,000*	79.8	242.5	20,000*				60
65	76.6	242.4	20,000*	78.6	241.3	20,000*	80.5	238.9	20,000*	65
70	75.4	241.0	20,000*	77.3	240.0	20,000*	79.3	237.5	20,000*	70
75	74.1	239.6	20,000*	76.1	238.5	20,000*	78.0	236.1	20,000*	75
80	72.9	238.0	20,000*	74.9	237.0	20,000*	76.8	234.5	20,000*	80
85	71.6	236.4	20,000*	73.6	235.3	20,000*	75.5	232.8	20,000*	85
90	70.4	234.6	20,000*	72.3	233.5	20,000*	74.2	231.0	20,000*	90
100	67.8	230.6	20,000*	69.8	229.5	20,000*	71.6	226.9	20,000*	100
110	65.2	226.1	20,000*	67.2	225.0	20,000*	69.0	222.4	20,000*	110
120	62.6	221.0	20,000*	64.5	219.9	20,000*	66.3	217.2	20,000*	120
130	59.8	215.4	20,000*	61.7	214.2	20,000*	63.5	211.4	20,000*	130
140	57.0	209.1	20,000*	58.9	207.8	20,000*	60.6	205.0	20,000*	140
150	54.1	202.0	20,000*	56.0	200.7	20,000*	57.7	197.8	20,000*	150
160	51.1	194.2	20,000*	53.0	192.8	20,000*	54.6	189.8	19,800*	160
170	48.0	185.4	20,000*	49.8	184.0	20,000*	51.4	180.8	19,100*	170
180	44.6	175.6	18,800	46.4	174.1	19,100	47.9	170.7	18,400*	180
190	41.1	164.5	17,000	42.9	162.9	17,300	44.3	159.3	17,600	190
200	37.3	151.9	15,400	39.0	150.2	15,700	40.3	146.2	15,900	200
210	33.1	137.3	13,900	34.7	135.4	14,200				210
220	28.3	120.0	12,600	29.9	117.7	12,800				220
230	22.7	98.3	11,400							230



Liftcrane Jib Capacities

New York City Code
Jib No. 123 With 12 Ft. 6 in. Strut On
Boom No. 82LR
184,600 Lb. Crane Counterweight
44,000 Lb. Carbody Counterweight
360 Degree Rating

Meets
ANSI B30.5
Requirements



999 SERIES 2

50 Ft. JIB

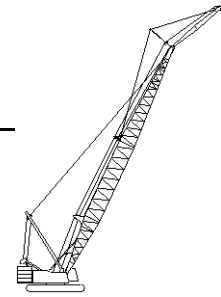
Jib Oper. Rad. Feet	0 Degree Offset			10 Degree Offset			20 Degree Offset			Jib Oper. Rad. Feet
	Boom Ang. Deg.	Jib Point Elev. Feet	Jib Capacity Pounds	Boom Ang. Deg.	Jib Point Elev. Feet	Jib Capacity Pounds	Boom Ang. Deg.	Jib Point Elev. Feet	Jib Capacity Pounds	
200 Ft. BOOM										
50	80.6	255.8	20,000 *							50
55	79.5	254.9	20,000 *							55
60	78.3	253.8	20,000 *	80.2	252.7	20,000*				60
65	77.1	252.7	20,000 *	79.0	251.6	20,000*	80.9	249.1	20,000*	65
70	76.0	251.4	20,000 *	77.9	250.3	20,000*	79.7	247.9	20,000*	70
75	74.8	250.0	20,000 *	76.7	248.9	20,000*	78.5	246.5	20,000*	75
80	73.6	248.5	20,000 *	75.5	247.4	20,000*	77.3	245.0	20,000*	80
85	72.4	246.9	20,000 *	74.3	245.8	20,000*	76.1	243.3	20,000*	85
90	71.2	245.2	20,000 *	73.1	244.1	20,000*	74.9	241.6	20,000*	90
100	68.8	241.4	20,000 *	70.6	240.3	20,000*	72.4	237.8	20,000*	100
110	66.3	237.1	20,000 *	68.1	236.0	20,000*	69.9	233.4	20,000*	110
120	63.7	232.3	20,000 *	65.6	231.2	20,000*	67.3	228.5	20,000*	120
130	61.2	227.0	20,000 *	63.0	225.7	20,000*	64.7	223.0	20,000*	130
140	58.5	221.0	20,000 *	60.3	219.7	20,000*	62.0	216.9	20,000*	140
150	55.8	214.3	20,000 *	57.6	213.1	20,000*	59.2	210.2	20,000*	150
160	52.9	207.0	20,000 *	54.7	205.6	20,000*	56.3	202.6	20,000*	160
170	50.0	198.8	20,000 *	51.8	197.4	20,000*	53.3	194.3	19,500*	170
180	46.9	189.7	18,200	48.7	188.3	18,600	50.1	185.0	18,800*	180
190	43.7	179.6	16,500	45.4	178.0	16,800	46.8	174.5	17,100	190
200	40.2	168.2	14,900	41.9	166.5	15,200	43.2	162.7	15,400	200
210	36.5	155.2	13,400	38.1	153.4	13,700	39.4	149.3	13,900	210
220	32.4	140.2	12,100	34.0	138.2	12,300				220
230	27.7	122.4	10,900	29.2	120.1	11,100				230
240	22.2	100.2	9,800							240



Liftcrane Jib Capacities

New York City Code
 Jib No. 123 With 12 Ft. 6 in. Strut On
 Boom No. 82LR
 184,600 Lb. Crane Counterweight
 44,000 Lb. Carbody Counterweight
 360 Degree Rating

Meets
 ANSI B30.5
 Requirements



999 SERIES 2

50 Ft. JIB

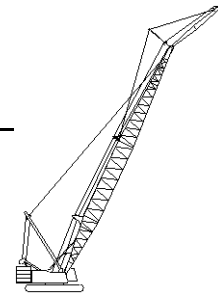
Jib Oper. Rad. Feet	0 Degree Offset			10 Degree Offset			20 Degree Offset			Jib Oper. Rad. Feet
	Boom Ang. Deg.	Jib Point Elev. Feet	Jib Capacity Pounds	Boom Ang. Deg.	Jib Point Elev. Feet	Jib Capacity Pounds	Boom Ang. Deg.	Jib Point Elev. Feet	Jib Capacity Pounds	
210 Ft. BOOM										
50	81.0	265.9	20,000*							50
55	79.9	265.0	20,000*							55
60	78.8	264.0	20,000*	80.6	263.0	20,000*				60
65	77.6	262.9	20,000*	79.5	261.8	20,000*				65
70	76.5	261.7	20,000*	78.3	260.6	20,000*	80.1	258.2	20,000*	70
75	75.4	260.4	20,000*	77.2	259.3	20,000*	79.0	256.8	20,000*	75
80	74.2	259.0	20,000*	76.1	257.9	20,000*	77.8	255.4	20,000*	80
85	73.1	257.4	20,000*	74.9	256.3	20,000*	76.7	253.8	20,000*	85
90	71.9	255.8	20,000*	73.8	254.7	20,000*	75.5	252.2	20,000*	90
100	69.6	252.2	20,000*	71.4	251.0	20,000*	73.1	248.5	20,000*	100
110	67.2	248.1	20,000*	69.0	246.9	20,000*	70.7	244.3	20,000*	110
120	64.8	243.5	20,000*	66.6	242.3	20,000*	68.3	239.7	20,000*	120
130	62.4	238.4	20,000*	64.1	237.2	20,000*	65.8	234.5	20,000*	130
140	59.8	232.7	20,000*	61.6	231.5	20,000*	63.2	228.7	20,000*	140
150	57.3	226.4	18,600	59.0	225.2	19,400	60.6	222.3	20,000*	150
160	54.6	219.5	16,100	56.3	218.2	16,800	57.9	215.2	17,500	160
170	51.8	211.8	14,000	53.5	210.5	14,600	55.0	207.4	15,200	170
180	49.0	203.3	12,100	50.6	201.9	12,600	52.1	198.7	13,100	180
190	46.0	193.9	10,400	47.6	192.4	10,900	49.0	189.1	11,300	190
200	42.8	183.5	8,900	44.4	181.9	9,300	45.8	178.3	9,700	200
210	39.4	171.7	7,500	41.0	170.0	7,900	42.3	166.1	8,200	210
220	35.7	158.4	6,200	37.3	156.5	6,600				220
230	31.7	143.0	5,100	33.2	141.0	5,400				230
240	27.2	124.8	4,000	28.6	122.4	4,200				240



Liftcrane Jib Capacities

New York City Code
Jib No. 123 With 12 Ft. 6 in. Strut On
Boom No. 82LR
184,600 Lb. Crane Counterweight
44,000 Lb. Carbody Counterweight
360 Degree Rating

Meets
ANSI B30.5
Requirements



999 SERIES 2

50 Ft. JIB

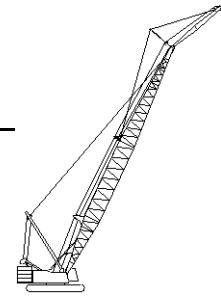
Jib Oper. Rad. Feet	0 Degree Offset			10 Degree Offset			20 Degree Offset			Jib Oper. Rad. Feet
	Boom Ang. Deg.	Jib Point Elev. Feet	Jib Capacity Pounds	Boom Ang. Deg.	Jib Point Elev. Feet	Jib Capacity Pounds	Boom Ang. Deg.	Jib Point Elev. Feet	Jib Capacity Pounds	
220 Ft. BOOM										
55	80.2	275.2	20,000 *							55
60	79.2	274.2	20,000 *	81.0	273.2	20,000*				60
65	78.1	273.2	20,000 *	79.9	272.1	20,000*				65
70	77.0	272.0	20,000 *	78.8	270.9	20,000*	80.5	268.4	20,000*	70
75	75.9	270.8	20,000 *	77.7	269.6	20,000*	79.4	267.2	20,000*	75
80	74.8	269.4	20,000 *	76.6	268.3	20,000*	78.3	265.8	20,000*	80
85	73.7	267.9	20,000 *	75.5	266.8	20,000*	77.2	264.3	20,000*	85
90	72.6	266.3	20,000 *	74.4	265.2	20,000*	76.1	262.7	20,000*	90
100	70.4	262.9	20,000 *	72.1	261.7	20,000*	73.8	259.2	20,000*	100
110	68.1	258.9	20,000 *	69.9	257.8	20,000*	71.5	255.2	20,000*	110
120	65.8	254.6	20,000 *	67.5	253.4	20,000*	69.2	250.7	20,000*	120
130	63.5	249.7	20,000 *	65.2	248.5	20,000*	66.8	245.8	20,000*	130
140	61.1	244.3	20,000 *	62.8	243.0	20,000*	64.3	240.3	20,000*	140
150	58.6	238.3	18,100	60.3	237.0	18,900	61.8	234.2	19,600	150
160	56.1	231.7	15,600	57.8	230.4	16,300	59.3	227.5	17,000	160
170	53.5	224.5	13,400	55.1	223.2	14,100	56.6	220.1	14,700	170
180	50.8	216.5	11,500	52.4	215.2	12,100	53.9	212.0	12,700	180
190	48.0	207.8	9,800	49.6	206.3	10,400	51.0	203.0	10,800	190
200	45.0	198.1	8,300	46.6	196.5	8,800	48.0	193.1	9,200	200
210	41.9	187.3	6,900	43.5	185.6	7,300	44.8	182.0	7,700	210
220	38.6	175.2	5,700	40.2	173.4	6,000	41.4	169.5	6,300	220
230	35.0	161.5	4,500	36.5	159.6	4,800				230



Liftcrane Jib Capacities

New York City Code
 Jib No. 123 With 12 Ft. 6 in. Strut On
 Boom No. 82LR
 184,600 Lb. Crane Counterweight
 44,000 Lb. Carbody Counterweight
 360 Degree Rating

Meets
 ANSI B30.5
 Requirements



999 SERIES 2

50 Ft. JIB

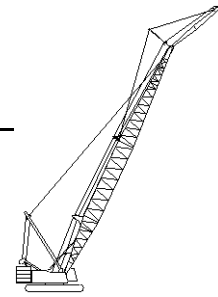
Jib Oper. Rad. Feet	0 Degree Offset			10 Degree Offset			20 Degree Offset			Jib Oper. Rad. Feet
	Boom Ang. Deg.	Jib Point Elev. Feet	Jib Capacity Pounds	Boom Ang. Deg.	Jib Point Elev. Feet	Jib Capacity Pounds	Boom Ang. Deg.	Jib Point Elev. Feet	Jib Capacity Pounds	
230 Ft. BOOM										
55	80.6	285.4	20,000 *							55
60	79.6	284.4	20,000 *							60
65	78.5	283.4	20,000 *	80.2	282.3	20,000*				65
70	77.5	282.3	20,000 *	79.2	281.2	20,000*	80.9	278.7	20,000*	70
75	76.4	281.1	20,000 *	78.1	280.0	20,000*	79.8	277.5	20,000*	75
80	75.4	279.8	20,000 *	77.1	278.7	20,000*	78.7	276.1	20,000*	80
85	74.3	278.4	20,000 *	76.0	277.2	20,000*	77.7	274.7	20,000*	85
90	73.3	276.8	20,000 *	75.0	275.7	20,000*	76.6	273.2	20,000*	90
100	71.1	273.5	20,000 *	72.8	272.4	20,000*	74.4	269.8	20,000*	100
110	68.9	269.7	20,000 *	70.6	268.6	20,000*	72.2	266.0	20,000*	110
120	66.7	265.5	20,000 *	68.4	264.4	20,000*	70.0	261.7	20,000*	120
130	64.5	260.9	20,000 *	66.1	259.7	20,000*	67.7	257.0	20,000*	130
140	62.2	255.7	20,000 *	63.8	254.5	20,000*	65.4	251.7	20,000*	140
150	59.9	250.0	17,500	61.5	248.8	18,400	63.0	245.9	19,200	150
160	57.5	243.8	15,000	59.1	242.5	15,800	60.5	239.6	16,500	160
170	55.0	236.9	12,900	56.6	235.6	13,600	58.0	232.6	14,200	170
180	52.4	229.4	11,000	54.0	228.0	11,600	55.4	224.9	12,200	180
190	49.8	221.2	9,300	51.4	219.7	9,800	52.7	216.5	10,300	190
200	47.1	212.1	7,700	48.6	210.6	8,300	49.9	207.2	8,700	200
210	44.2	202.1	6,400	45.7	200.5	6,800	47.0	197.0	7,200	210
220	41.1	191.0	5,100	42.6	189.3	5,500	43.8	185.6	5,900	220
230	37.9	178.6	4,000	39.4	176.8	4,300	40.5	172.7	4,600	230



Liftcrane Jib Capacities

New York City Code
Jib No. 123 With 12 Ft. 6 in. Strut On
Boom No. 82LR
184,600 Lb. Crane Counterweight
44,000 Lb. Carbody Counterweight
360 Degree Rating

Meets
ANSI B30.5
Requirements



999 SERIES 2

50 Ft. JIB

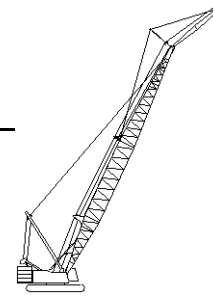
Jib Oper. Rad. Feet	0 Degree Offset			10 Degree Offset			20 Degree Offset			Jib Oper. Rad. Feet
	Boom Ang. Deg.	Jib Point Elev. Feet	Jib Capacity Pounds	Boom Ang. Deg.	Jib Point Elev. Feet	Jib Capacity Pounds	Boom Ang. Deg.	Jib Point Elev. Feet	Jib Capacity Pounds	
240 Ft. BOOM										
55	80.9	295.5	20,000 *							55
60	79.9	294.6	20,000 *							60
65	78.9	293.6	20,000 *	80.6	292.5	20,000*				65
70	77.9	292.6	20,000 *	79.6	291.4	20,000*				70
75	76.9	291.4	20,000 *	78.6	290.3	20,000*	80.2	287.8	20,000*	75
80	75.9	290.1	20,000 *	77.5	289.0	20,000*	79.1	286.5	20,000*	80
85	74.9	288.8	20,000 *	76.5	287.6	20,000*	78.1	285.1	20,000*	85
90	73.9	287.3	20,000 *	75.5	286.2	20,000*	77.1	283.6	20,000*	90
100	71.8	284.1	20,000 *	73.4	282.9	20,000*	75.0	280.4	20,000*	100
110	69.7	280.5	20,000 *	71.3	279.3	20,000*	72.9	276.7	20,000*	110
120	67.6	276.4	20,000 *	69.2	275.3	20,000*	70.7	272.6	20,000*	120
130	65.4	272.0	20,000 *	67.0	270.8	20,000*	68.5	268.1	20,000*	130
140	63.2	267.0	19,600	64.8	265.8	20,000*	66.3	263.0	20,000*	140
150	61.0	261.6	16,800	62.6	260.3	17,700	64.0	257.5	18,500	150
160	58.7	255.6	14,300	60.3	254.4	15,100	61.7	251.5	15,900	160
170	56.4	249.1	12,100	57.9	247.8	12,900	59.3	244.9	13,600	170
180	54.0	242.0	10,200	55.5	240.7	10,900	56.9	237.6	11,500	180
190	51.5	234.2	8,500	53.0	232.8	9,100	54.3	229.7	9,700	190
200	48.9	225.7	7,000	50.4	224.2	7,600	51.7	220.9	8,000	200
210	46.2	216.3	5,600	47.7	214.8	6,100	48.9	211.4	6,600	210
220	43.4	206.0	4,400	44.8	204.4	4,800	46.0	200.8	5,200	220



Liftcrane Jib Capacities

New York City Code
 Jib No. 123 With 12 Ft. 6 in. Strut On
 Boom No. 82LR
 184,600 Lb. Crane Counterweight
 44,000 Lb. Carbody Counterweight
 360 Degree Rating

Meets
 ANSI B30.5
 Requirements



999 SERIES 2

50 Ft. JIB

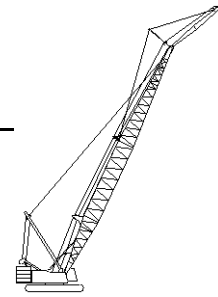
Jib Oper. Rad. Feet	0 Degree Offset			10 Degree Offset			20 Degree Offset			Jib Oper. Rad. Feet
	Boom Ang. Deg.	Jib Point Elev. Feet	Jib Capacity Pounds	Boom Ang. Deg.	Jib Point Elev. Feet	Jib Capacity Pounds	Boom Ang. Deg.	Jib Point Elev. Feet	Jib Capacity Pounds	
250 Ft. BOOM										
60	80.3	304.8	20,000 *							60
65	79.3	303.8	20,000 *	80.9	302.7	20,000*				65
70	78.3	302.8	20,000 *	79.9	301.7	20,000*				70
75	77.4	301.7	20,000 *	78.9	300.5	20,000*	80.5	298.0	20,000*	75
80	76.4	300.4	20,000 *	78.0	299.3	20,000*	79.5	296.8	20,000*	80
85	75.4	299.1	20,000 *	77.0	298.0	20,000*	78.5	295.5	20,000*	85
90	74.4	297.7	20,000 *	76.0	296.6	20,000*	77.5	294.0	20,000*	90
100	72.4	294.6	20,000 *	74.0	293.5	20,000*	75.5	290.9	20,000*	100
110	70.4	291.2	20,000 *	72.0	290.0	20,000*	73.5	287.4	20,000*	110
120	68.4	287.3	20,000 *	69.9	286.1	20,000*	71.4	283.4	20,000*	120
130	66.3	283.0	20,000 *	67.8	281.8	20,000*	69.3	279.1	20,000*	130
140	64.2	278.2	19,000	65.7	277.0	20,000*	67.2	274.3	20,000*	140
150	62.1	273.0	16,200	63.6	271.8	17,100	65.0	269.0	18,000	150
160	59.9	267.3	13,700	61.4	266.1	14,600	62.8	263.2	15,400	160
170	57.6	261.1	11,500	59.1	259.8	12,300	60.5	256.9	13,100	170
180	55.3	254.4	9,600	56.8	253.0	10,400	58.2	250.0	11,000	180
190	53.0	247.0	7,900	54.5	245.6	8,600	55.8	242.5	9,200	190
200	50.5	238.9	6,400	52.0	237.5	7,000	53.3	234.3	7,500	200
210	48.0	230.1	5,000	49.5	228.6	5,600	50.7	225.3	6,000	210
220				46.8	218.9	4,300	48.0	215.4	4,700	220



Liftcrane Jib Capacities

New York City Code
Jib No. 123 With 12 Ft. 6 in. Strut On
Boom No. 82LR
184,600 Lb. Crane Counterweight
44,000 Lb. Carbody Counterweight
360 Degree Rating

Meets
ANSI B30.5
Requirements



999 SERIES 2

50 Ft. JIB

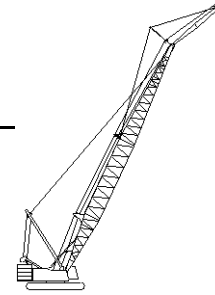
Jib Oper. Rad. Feet	0 Degree Offset			10 Degree Offset			20 Degree Offset			Jib Oper. Rad. Feet
	Boom Ang. Deg.	Jib Point Elev. Feet	Jib Capacity Pounds	Boom Ang. Deg.	Jib Point Elev. Feet	Jib Capacity Pounds	Boom Ang. Deg.	Jib Point Elev. Feet	Jib Capacity Pounds	
260 Ft. BOOM										
60	80.6	315.0	20,000 *							60
65	79.6	314.0	20,000 *							65
70	78.7	313.0	20,000 *	80.3	311.9	20,000*				70
75	77.8	311.9	20,000 *	79.3	310.8	20,000*	80.8	308.3	20,000*	75
80	76.8	310.7	20,000 *	78.4	309.6	20,000*	79.9	307.1	20,000*	80
85	75.9	309.5	20,000 *	77.4	308.3	20,000*	78.9	305.8	20,000*	85
90	74.9	308.1	20,000 *	76.5	307.0	20,000*	77.9	304.4	20,000*	90
100	73.0	305.1	20,000 *	74.5	304.0	20,000*	76.0	301.4	20,000*	100
110	71.1	301.8	20,000 *	72.6	300.6	20,000*	74.0	298.0	20,000*	110
120	69.1	298.0	20,000 *	70.6	296.9	20,000*	72.0	294.2	20,000*	120
130	67.1	293.9	20,000 *	68.6	292.7	20,000*	70.0	290.0	20,000*	130
140	65.1	289.4	18,500	66.6	288.1	19,600	68.0	285.4	20,000*	140
150	63.0	284.4	15,600	64.5	283.1	16,600	65.9	280.3	17,500	150
160	60.9	278.9	13,100	62.4	277.6	14,000	63.8	274.8	14,900	160
170	58.8	273.0	11,000	60.3	271.7	11,800	61.6	268.8	12,600	170
180	56.6	266.5	9,000	58.1	265.2	9,800	59.4	262.2	10,500	180
190	54.4	259.5	7,300	55.8	258.1	8,000	57.1	255.0	8,700	190
200	52.0	251.8	5,800	53.5	250.4	6,400	54.7	247.3	7,000	200
210	49.7	243.5	4,400	51.1	242.1	5,000	52.3	238.8	5,500	210
220							49.7	229.5	4,200	220
270 Ft. BOOM										
60	80.9	325.1	20,000 *							60
65	80.0	324.2	20,000 *							65
70	79.1	323.2	20,000 *	80.6	322.1	20,000*				70
75	78.2	322.2	20,000 *	79.7	321.0	20,000*				75
80	77.2	321.0	20,000 *	78.7	319.9	20,000*	80.2	317.3	20,000*	80
85	76.3	319.8	20,000 *	77.8	318.7	20,000*	79.3	316.1	20,000*	85
90	75.4	318.5	20,000 *	76.9	317.4	20,000*	78.3	314.8	20,000*	90
100	73.5	315.6	20,000 *	75.0	314.5	20,000*	76.5	311.9	20,000*	100
110	71.7	312.4	20,000 *	73.1	311.2	20,000*	74.6	308.6	20,000*	110
120	69.8	308.8	20,000 *	71.2	307.6	20,000*	72.6	304.9	20,000*	120
130	67.9	304.8	20,000 *	69.3	303.6	20,000*	70.7	300.9	20,000*	130
140	65.9	300.4	17,900	67.4	299.2	19,000	68.7	296.4	20,000*	140
150	63.9	295.6	15,000	65.4	294.4	16,100	66.7	291.6	17,000	150
160	61.9	290.4	12,500	63.4	289.1	13,500	64.7	286.3	14,400	160
170	59.9	284.7	10,400	61.3	283.4	11,200	62.6	280.5	12,000	170
180	57.8	278.5	8,500	59.2	277.2	9,300	60.5	274.2	10,000	180
190	55.6	271.8	6,800	57.0	270.4	7,500	58.3	267.4	8,100	190
200	53.4	264.5	5,200	54.8	263.1	5,900	56.0	260.0	6,500	200
210				52.5	255.2	4,500	53.7	252.0	5,000	210



Liftcrane Jib Capacities

New York City Code
Jib No. 123 With 12 Ft. 6 in. Strut On
Boom No. 82LR
184,600 Lb. Crane Counterweight
44,000 Lb. Carbody Counterweight
360 Degree Rating

Meets
ANSI B30.5
Requirements



999 SERIES 2

50 Ft. JIB

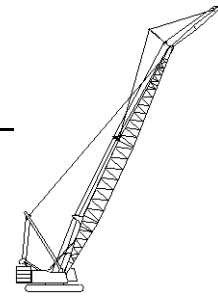
Jib Oper. Rad. Feet	0 Degree Offset			10 Degree Offset			20 Degree Offset			Jib Oper. Rad. Feet
	Boom Ang. Deg.	Jib Point Elev. Feet	Jib Capacity Pounds	Boom Ang. Deg.	Jib Point Elev. Feet	Jib Capacity Pounds	Boom Ang. Deg.	Jib Point Elev. Feet	Jib Capacity Pounds	
280 Ft. BOOM										
65	80.3	334.4	20,000 *							65
70	79.4	333.4	20,000 *	80.9	332.3	20,000*				70
75	78.5	332.4	20,000 *	80.0	331.3	20,000*				75
80	77.6	331.3	20,000 *	79.1	330.2	20,000*	80.5	327.6	20,000*	80
85	76.7	330.1	20,000 *	78.2	329.0	20,000*	79.6	326.4	20,000*	85
90	75.9	328.8	20,000 *	77.3	327.7	20,000*	78.7	325.1	20,000*	90
100	74.1	326.1	20,000 *	75.5	324.9	20,000*	76.9	322.3	20,000*	100
110	72.2	322.9	20,000 *	73.7	321.8	20,000*	75.0	319.1	20,000*	110
120	70.4	319.4	20,000 *	71.8	318.3	20,000*	73.2	315.6	20,000*	120
130	68.6	315.6	20,000 *	70.0	314.4	20,000*	71.3	311.7	20,000*	130
140	66.7	311.4	17,200	68.1	310.1	18,400	69.4	307.4	19,500	140
150	64.8	306.7	14,300	66.2	305.5	15,400	67.5	302.7	16,400	150
160	62.8	301.7	11,800	64.2	300.4	12,800	65.5	297.6	13,700	160
170	60.9	296.2	9,600	62.3	295.0	10,600	63.5	292.1	11,400	170
180	58.9	290.3	7,700	60.2	289.0	8,600	61.5	286.1	9,300	180
190	56.8	283.9	6,000	58.2	282.5	6,800	59.4	279.5	7,500	190
200	54.7	276.9	4,500	56.1	275.6	5,200	57.3	272.5	5,800	200
210							55.1	264.8	4,300	210
290 Ft. BOOM										
65	80.6	344.5	20,000 *							65
70	79.7	343.6	20,000 *							70
75	78.9	342.6	20,000 *	80.3	341.5	20,000*				75
80	78.0	341.6	20,000 *	79.4	340.4	20,000*	80.8	337.8	20,000*	80
85	77.1	340.4	20,000 *	78.5	339.3	20,000*	79.9	336.7	20,000*	85
90	76.3	339.2	20,000 *	77.7	338.0	20,000*	79.0	335.4	20,000*	90
100	74.5	336.5	20,000 *	75.9	335.3	20,000*	77.3	332.7	20,000*	100
110	72.8	333.4	20,000 *	74.2	332.3	20,000*	75.5	329.6	20,000*	110
120	71.0	330.1	20,000 *	72.4	328.9	20,000*	73.7	326.2	20,000*	120
130	69.2	326.3	19,900	70.6	325.1	20,000*	71.9	322.5	20,000*	130
140	67.4	322.3	16,600	68.8	321.0	17,800	70.1	318.3	19,000	140
150	65.6	317.8	13,700	66.9	316.6	14,800	68.2	313.8	15,900	150
160	63.7	313.0	11,200	65.1	311.7	12,300	66.3	308.9	13,200	160
170	61.8	307.7	9,000	63.2	306.4	10,000	64.4	303.5	10,900	170
180	59.9	302.0	7,100	61.2	300.7	8,000	62.4	297.8	8,800	180
190	57.9	295.8	5,400	59.2	294.5	6,200	60.4	291.5	6,900	190
200				57.2	287.8	4,600	58.4	284.8	5,300	200



Liftcrane Jib Capacities

New York City Code
Jib No. 123 With 12 Ft. 6 in. Strut On
Boom No. 82LR
184,600 Lb. Crane Counterweight
44,000 Lb. Carbody Counterweight
360 Degree Rating

Meets
ANSI B30.5
Requirements



999 SERIES 2

60 Ft. JIB

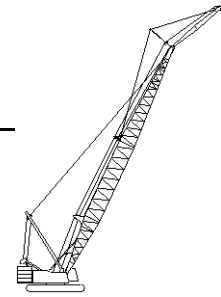
Jib Oper. Rad. Feet	0 Degree Offset			10 Degree Offset			20 Degree Offset			Jib Oper. Rad. Feet
	Boom Ang. Deg.	Jib Point Elev. Feet	Jib Capacity Pounds	Boom Ang. Deg.	Jib Point Elev. Feet	Jib Capacity Pounds	Boom Ang. Deg.	Jib Point Elev. Feet	Jib Capacity Pounds	
120 Ft. BOOM										
40	80.0	186.5	10,000 *							40
45	78.4	185.5	10,000 *							45
50	76.8	184.3	10,000 *	80.0	183.4	10,000*				50
55	75.1	183.0	10,000 *	78.4	182.0	10,000*				55
60	73.5	181.5	10,000 *	76.7	180.5	10,000*	79.9	178.2	10,000*	60
65	71.8	179.8	10,000 *	75.0	178.9	10,000*	78.2	176.5	10,000*	65
70	70.2	178.0	10,000 *	73.3	177.1	10,000*	76.5	174.7	10,000*	70
75	68.5	176.1	10,000 *	71.6	175.1	10,000*	74.7	172.7	10,000*	75
80	66.7	173.9	10,000 *	69.9	172.9	10,000*	73.0	170.5	10,000*	80
85	65.0	171.6	10,000 *	68.2	170.6	10,000*	71.2	168.1	10,000*	85
90	63.2	169.1	10,000 *	66.4	168.1	10,000*	69.4	165.5	10,000*	90
100	59.6	163.5	10,000 *	62.7	162.4	10,000*	65.7	159.8	10,000*	100
110	55.9	156.9	10,000 *	58.9	155.8	10,000*	61.8	153.1	10,000*	110
120	51.9	149.4	10,000 *	55.0	148.2	10,000*	57.8	145.3	10,000*	120
130	47.7	140.7	10,000 *	50.7	139.5	10,000*	53.5	136.4	10,000*	130
140	43.2	130.6	10,000 *	46.2	129.2	10,000*	48.8	125.9	10,000*	140
150	38.3	118.7	10,000 *	41.2	117.1	10,000*	43.7	113.4	10,000*	150
160	32.8	104.2	10,000 *	35.6	102.5	10,000*				160
170	26.2	85.9	10,000 *	28.9	83.7	10,000*				170
130 Ft. BOOM										
40	80.5	196.7	10,000 *							40
45	79.0	195.7	10,000 *							45
50	77.5	194.6	10,000 *	80.5	193.6	10,000*				50
55	75.9	193.3	10,000 *	79.0	192.4	10,000*				55
60	74.4	191.9	10,000 *	77.4	191.0	10,000*	80.4	188.6	10,000*	60
65	72.8	190.4	10,000 *	75.9	189.4	10,000*	78.8	187.0	10,000*	65
70	71.2	188.7	10,000 *	74.3	187.7	10,000*	77.2	185.3	10,000*	70
75	69.6	186.8	10,000 *	72.7	185.8	10,000*	75.6	183.4	10,000*	75
80	68.0	184.8	10,000 *	71.0	183.8	10,000*	74.0	181.3	10,000*	80
85	66.4	182.6	10,000 *	69.4	181.6	10,000*	72.3	179.1	10,000*	85
90	64.7	180.3	10,000 *	67.7	179.2	10,000*	70.6	176.7	10,000*	90
100	61.4	175.0	10,000 *	64.3	174.0	10,000*	67.2	171.3	10,000*	100
110	57.9	169.0	10,000 *	60.8	167.9	10,000*	63.6	165.1	10,000*	110
120	54.2	162.1	10,000 *	57.1	160.9	10,000*	59.8	158.0	10,000*	120
130	50.4	154.1	10,000 *	53.3	152.9	10,000*	55.9	149.8	10,000*	130
140	46.4	145.0	10,000 *	49.2	143.7	10,000*	51.7	140.4	10,000*	140
150	42.0	134.4	10,000 *	44.8	133.0	10,000*	47.2	129.4	10,000*	150
160	37.2	122.0	10,000 *	40.0	120.4	10,000*	42.2	116.5	10,000*	160
170	31.9	107.0	10,000 *	34.5	105.2	10,000*				170
180	25.5	88.1	10,000 *	28.0	85.9	10,000*				180



Liftcrane Jib Capacities

New York City Code
 Jib No. 123 With 12 Ft. 6 in. Strut On
 Boom No. 82LR
 184,600 Lb. Crane Counterweight
 44,000 Lb. Carbody Counterweight
 360 Degree Rating

Meets
 ANSI B30.5
 Requirements



999 SERIES 2

60 Ft. JIB

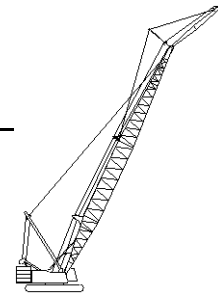
Jib Oper. Rad. Feet	0 Degree Offset			10 Degree Offset			20 Degree Offset			Jib Oper. Rad. Feet
	Boom Ang. Deg.	Jib Point Elev. Feet	Jib Capacity Pounds	Boom Ang. Deg.	Jib Point Elev. Feet	Jib Capacity Pounds	Boom Ang. Deg.	Jib Point Elev. Feet	Jib Capacity Pounds	
140 Ft. BOOM										
40	81.0	206.8	10,000 *							40
45	79.6	205.9	10,000 *							45
50	78.1	204.8	10,000 *	81.0	203.9	10,000*				50
55	76.7	203.7	10,000 *	79.5	202.7	10,000*				55
60	75.2	202.3	10,000 *	78.1	201.3	10,000*	80.9	198.9	10,000*	60
65	73.7	200.9	10,000 *	76.6	199.9	10,000*	79.4	197.4	10,000*	65
70	72.2	199.3	10,000 *	75.1	198.3	10,000*	77.9	195.8	10,000*	70
75	70.7	197.5	10,000 *	73.6	196.5	10,000*	76.4	194.0	10,000*	75
80	69.2	195.6	10,000 *	72.0	194.6	10,000*	74.8	192.1	10,000*	80
85	67.6	193.6	10,000 *	70.5	192.5	10,000*	73.3	190.0	10,000*	85
90	66.1	191.4	10,000 *	68.9	190.3	10,000*	71.7	187.7	10,000*	90
100	62.9	186.4	10,000 *	65.7	185.3	10,000*	68.4	182.7	10,000*	100
110	59.7	180.8	10,000 *	62.5	179.7	10,000*	65.1	176.9	10,000*	110
120	56.3	174.3	10,000 *	59.1	173.2	10,000*	61.6	170.3	10,000*	120
130	52.8	167.0	10,000 *	55.5	165.8	10,000*	58.0	162.8	10,000*	130
140	49.0	158.7	10,000 *	51.8	157.4	10,000*	54.2	154.2	10,000*	140
150	45.1	149.1	10,000 *	47.8	147.7	10,000*	50.2	144.3	10,000*	150
160	40.9	138.1	10,000 *	43.5	136.6	10,000*	45.8	132.9	10,000*	160
170	36.3	125.2	10,000 *	38.8	123.6	10,000*	40.9	119.4	10,000*	170
180	31.0	109.8	10,000 *	33.5	107.9	10,000*				180
190	24.8	90.3	10,000 *							190



Liftcrane Jib Capacities

New York City Code
Jib No. 123 With 12 Ft. 6 in. Strut On
Boom No. 82LR
184,600 Lb. Crane Counterweight
44,000 Lb. Carbody Counterweight
360 Degree Rating

Meets
ANSI B30.5
Requirements



999 SERIES 2

60 Ft. JIB

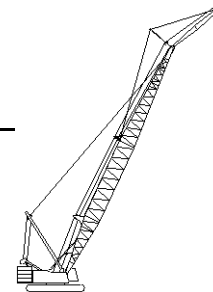
Jib Oper. Rad. Feet	0 Degree Offset			10 Degree Offset			20 Degree Offset			Jib Oper. Rad. Feet
	Boom Ang. Deg.	Jib Point Elev. Feet	Jib Capacity Pounds	Boom Ang. Deg.	Jib Point Elev. Feet	Jib Capacity Pounds	Boom Ang. Deg.	Jib Point Elev. Feet	Jib Capacity Pounds	
150 Ft. BOOM										
45	80.1	216.1	10,000 *							45
50	78.7	215.1	10,000 *							50
55	77.3	214.0	10,000 *	80.1	212.9	10,000*				55
60	75.9	212.7	10,000 *	78.7	211.7	10,000*				60
65	74.5	211.3	10,000 *	77.2	210.3	10,000*	80.0	207.8	10,000*	65
70	73.1	209.8	10,000 *	75.8	208.8	10,000*	78.5	206.2	10,000*	70
75	71.7	208.1	10,000 *	74.4	207.1	10,000*	77.1	204.6	10,000*	75
80	70.2	206.3	10,000 *	72.9	205.3	10,000*	75.6	202.7	10,000*	80
85	68.8	204.4	10,000 *	71.5	203.3	10,000*	74.1	200.7	10,000*	85
90	67.3	202.3	10,000 *	70.0	201.2	10,000*	72.6	198.6	10,000*	90
100	64.3	197.7	10,000 *	67.0	196.6	10,000*	69.6	193.9	10,000*	100
110	61.2	192.4	10,000 *	63.9	191.2	10,000*	66.4	188.5	10,000*	110
120	58.1	186.3	10,000 *	60.7	185.2	10,000*	63.2	182.3	10,000*	120
130	54.8	179.5	10,000 *	57.4	178.3	10,000*	59.9	175.3	10,000*	130
140	51.4	171.8	10,000 *	54.0	170.5	10,000*	56.3	167.4	10,000*	140
150	47.8	163.1	10,000 *	50.4	161.7	10,000*	52.6	158.4	10,000*	150
160	44.0	153.1	10,000 *	46.5	151.7	10,000*	48.7	148.2	10,000*	160
170	39.9	141.7	10,000 *	42.4	140.2	10,000*	44.4	136.3	10,000*	170
180	35.3	128.4	10,000 *	37.8	126.7	10,000*	39.7	122.4	10,000*	180
190	30.2	112.4	10,000 *	32.6	110.4	10,000*				190
200	24.2	92.4	10,000 *							200



Liftcrane Jib Capacities

New York City Code
 Jib No. 123 With 12 Ft. 6 in. Strut On
 Boom No. 82LR
 184,600 Lb. Crane Counterweight
 44,000 Lb. Carbody Counterweight
 360 Degree Rating

Meets
 ANSI B30.5
 Requirements



999 SERIES 2

60 Ft. JIB

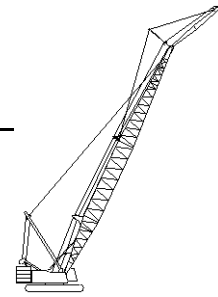
Jib Oper. Rad. Feet	0 Degree Offset			10 Degree Offset			20 Degree Offset			Jib Oper. Rad. Feet
	Boom Ang. Deg.	Jib Point Elev. Feet	Jib Capacity Pounds	Boom Ang. Deg.	Jib Point Elev. Feet	Jib Capacity Pounds	Boom Ang. Deg.	Jib Point Elev. Feet	Jib Capacity Pounds	
160 Ft. BOOM										
45	80.5	226.3	10,000 *							45
50	79.2	225.3	10,000 *							50
55	77.9	224.2	10,000 *	80.5	223.2	10,000*				55
60	76.5	223.0	10,000 *	79.2	222.0	10,000*				60
65	75.2	221.7	10,000 *	77.8	220.7	10,000*	80.4	218.1	10,000*	65
70	73.9	220.3	10,000 *	76.5	219.2	10,000*	79.1	216.7	10,000*	70
75	72.5	218.7	10,000 *	75.1	217.6	10,000*	77.7	215.1	10,000*	75
80	71.1	217.0	10,000 *	73.8	215.9	10,000*	76.3	213.3	10,000*	80
85	69.8	215.1	10,000 *	72.4	214.1	10,000*	74.9	211.5	10,000*	85
90	68.4	213.2	10,000 *	71.0	212.1	10,000*	73.5	209.4	10,000*	90
100	65.6	208.8	10,000 *	68.1	207.7	10,000*	70.6	205.0	10,000*	100
110	62.7	203.8	10,000 *	65.2	202.6	10,000*	67.6	199.9	10,000*	110
120	59.7	198.1	10,000 *	62.2	196.9	10,000*	64.6	194.1	10,000*	120
130	56.6	191.7	10,000 *	59.1	190.5	10,000*	61.5	187.6	10,000*	130
140	53.4	184.6	10,000 *	55.9	183.3	10,000*	58.2	180.2	10,000*	140
150	50.1	176.5	10,000 *	52.6	175.2	10,000*	54.8	171.9	10,000*	150
160	46.6	167.4	10,000 *	49.1	166.0	10,000*	51.2	162.6	10,000*	160
170	42.9	157.1	10,000 *	45.3	155.6	10,000*	47.4	151.9	10,000*	170
180	38.9	145.2	10,000 *	41.3	143.6	10,000*	43.2	139.6	10,000*	180
190	34.5	131.5	10,000 *	36.8	129.7	10,000*	38.6	125.2	10,000*	190
200	29.5	115.0	10,000 *	31.7	113.0	10,000*				200
210	23.6	94.4	10,000 *							210



Liftcrane Jib Capacities

New York City Code
Jib No. 123 With 12 Ft. 6 in. Strut On
Boom No. 82LR
184,600 Lb. Crane Counterweight
44,000 Lb. Carbody Counterweight
360 Degree Rating

Meets
ANSI B30.5
Requirements



999 SERIES 2

60 Ft. JIB

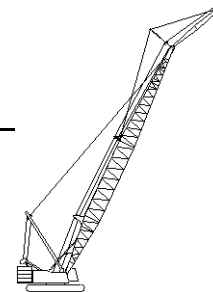
Jib Oper. Rad. Feet	0 Degree Offset			10 Degree Offset			20 Degree Offset			Jib Oper. Rad. Feet
	Boom Ang. Deg.	Jib Point Elev. Feet	Jib Capacity Pounds	Boom Ang. Deg.	Jib Point Elev. Feet	Jib Capacity Pounds	Boom Ang. Deg.	Jib Point Elev. Feet	Jib Capacity Pounds	
170 Ft. BOOM										
45	80.9	236.4	10,000 *							45
50	79.7	235.5	10,000 *							50
55	78.4	234.5	10,000 *	80.9	233.4	10,000*				55
60	77.1	233.3	10,000 *	79.7	232.3	10,000*				60
65	75.9	232.1	10,000 *	78.4	231.0	10,000*	80.9	228.5	10,000*	65
70	74.6	230.7	10,000 *	77.1	229.6	10,000*	79.6	227.0	10,000*	70
75	73.3	229.2	10,000 *	75.8	228.1	10,000*	78.2	225.5	10,000*	75
80	72.0	227.6	10,000 *	74.5	226.5	10,000*	76.9	223.9	10,000*	80
85	70.7	225.8	10,000 *	73.2	224.7	10,000*	75.6	222.1	10,000*	85
90	69.4	223.9	10,000 *	71.8	222.8	10,000*	74.2	220.2	10,000*	90
100	66.7	219.8	10,000 *	69.1	218.6	10,000*	71.5	215.9	10,000*	100
110	63.9	215.0	10,000 *	66.4	213.9	10,000*	68.7	211.1	10,000*	110
120	61.1	209.7	10,000 *	63.6	208.5	10,000*	65.9	205.7	10,000*	120
130	58.2	203.7	10,000 *	60.7	202.5	10,000*	62.9	199.5	10,000*	130
140	55.3	197.0	10,000 *	57.7	195.7	10,000*	59.9	192.7	10,000*	140
150	52.2	189.4	10,000 *	54.6	188.1	10,000*	56.7	185.0	10,000*	150
160	48.9	181.0	10,000 *	51.3	179.7	10,000*	53.4	176.3	10,000*	160
170	45.5	171.6	10,000 *	47.9	170.1	10,000*	49.9	166.6	10,000*	170
180	41.9	160.9	10,000 *	44.2	159.3	10,000*	46.1	155.5	10,000*	180
190	38.0	148.6	10,000 *	40.2	147.0	10,000*	42.1	142.8	10,000*	190
200	33.7	134.5	10,000 *	35.9	132.6	10,000*				200
210	28.8	117.6	10,000 *	31.0	115.4	10,000*				210
220	23.1	96.4	10,000 *							220



Liftcrane Jib Capacities

New York City Code
 Jib No. 123 With 12 Ft. 6 in. Strut On
 Boom No. 82LR
 184,600 Lb. Crane Counterweight
 44,000 Lb. Carbody Counterweight
 360 Degree Rating

Meets
 ANSI B30.5
 Requirements



999 SERIES 2

60 Ft. JIB

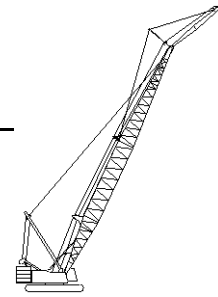
Jib Oper. Rad. Feet	0 Degree Offset			10 Degree Offset			20 Degree Offset			Jib Oper. Rad. Feet
	Boom Ang. Deg.	Jib Point Elev. Feet	Jib Capacity Pounds	Boom Ang. Deg.	Jib Point Elev. Feet	Jib Capacity Pounds	Boom Ang. Deg.	Jib Point Elev. Feet	Jib Capacity Pounds	
180 Ft. BOOM										
50	80.1	245.7	10,000 *							50
55	78.9	244.7	10,000 *							55
60	77.7	243.6	10,000 *	80.1	242.5	10,000*				60
65	76.5	242.4	10,000 *	78.9	241.3	10,000*				65
70	75.2	241.1	10,000 *	77.6	240.0	10,000*	80.0	237.4	10,000*	70
75	74.0	239.6	10,000 *	76.4	238.6	10,000*	78.8	235.9	10,000*	75
80	72.8	238.1	10,000 *	75.2	237.0	10,000*	77.5	234.4	10,000*	80
85	71.5	236.4	10,000 *	73.9	235.3	10,000*	76.2	232.7	10,000*	85
90	70.3	234.6	10,000 *	72.6	233.5	10,000*	74.9	230.8	10,000*	90
100	67.7	230.7	10,000 *	70.1	229.5	10,000*	72.3	226.8	10,000*	100
110	65.1	226.2	10,000 *	67.5	225.0	10,000*	69.7	222.2	10,000*	110
120	62.4	221.1	10,000 *	64.8	219.9	10,000*	67.0	217.1	10,000*	120
130	59.7	215.4	10,000 *	62.0	214.2	10,000*	64.2	211.3	10,000*	130
140	56.9	209.1	10,000 *	59.2	207.9	10,000*	61.3	204.8	10,000*	140
150	54.0	202.1	10,000 *	56.3	200.8	10,000*	58.4	197.6	10,000*	150
160	51.0	194.2	10,000 *	53.3	192.9	10,000*	55.3	189.6	10,000*	160
170	47.8	185.4	10,000 *	50.1	184.0	10,000*	52.1	180.6	10,000*	170
180	44.5	175.6	10,000 *	46.7	174.2	10,000*	48.6	170.5	10,000*	180
190	41.0	164.6	10,000 *	43.2	163.0	10,000*	45.0	159.1	10,000*	190
200	37.2	152.0	10,000 *	39.3	150.3	10,000*	41.0	146.0	10,000*	200
210	33.0	137.4	10,000 *	35.1	135.5	10,000*				210
220	28.2	120.1	10,000 *	30.2	117.8	10,000*				220
230	22.6	98.4	10,000 *							230



Liftcrane Jib Capacities

New York City Code
 Jib No. 123 With 12 Ft. 6 in. Strut On
 Boom No. 82LR
 184,600 Lb. Crane Counterweight
 44,000 Lb. Carbody Counterweight
 360 Degree Rating

Meets
 ANSI B30.5
 Requirements



999 SERIES 2

60 Ft. JIB

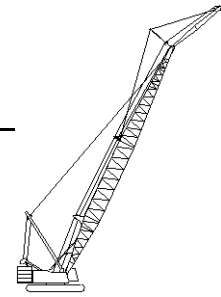
Jib Oper. Rad. Feet	0 Degree Offset			10 Degree Offset			20 Degree Offset			Jib Oper. Rad. Feet
	Boom Ang. Deg.	Jib Point Elev. Feet	Jib Capacity Pounds	Boom Ang. Deg.	Jib Point Elev. Feet	Jib Capacity Pounds	Boom Ang. Deg.	Jib Point Elev. Feet	Jib Capacity Pounds	
190 Ft. BOOM										
50	80.5	255.8	10,000 *							50
55	79.3	254.9	10,000 *							55
60	78.2	253.8	10,000 *	80.5	252.8	10,000*				60
65	77.0	252.7	10,000 *	79.3	251.6	10,000*				65
70	75.8	251.4	10,000 *	78.2	250.3	10,000*	80.4	247.7	10,000*	70
75	74.7	250.1	10,000 *	77.0	249.0	10,000*	79.2	246.3	10,000*	75
80	73.5	248.6	10,000 *	75.8	247.5	10,000*	78.0	244.8	10,000*	80
85	72.3	247.0	10,000 *	74.6	245.9	10,000*	76.8	243.2	10,000*	85
90	71.1	245.3	10,000 *	73.4	244.2	10,000*	75.6	241.5	10,000*	90
100	68.6	241.5	10,000 *	70.9	240.3	10,000*	73.1	237.6	10,000*	100
110	66.2	237.2	10,000 *	68.4	236.0	10,000*	70.6	233.2	10,000*	110
120	63.6	232.4	10,000 *	65.9	231.2	10,000*	68.0	228.3	10,000*	120
130	61.0	227.0	10,000 *	63.3	225.8	10,000*	65.4	222.9	10,000*	130
140	58.4	221.0	10,000 *	60.6	219.8	10,000*	62.7	216.8	10,000*	140
150	55.7	214.4	10,000 *	57.9	213.1	10,000*	59.9	210.0	10,000*	150
160	52.8	207.0	10,000 *	55.0	205.7	10,000*	57.0	202.5	10,000*	160
170	49.9	198.8	10,000 *	52.1	197.5	10,000*	54.0	194.1	10,000*	170
180	46.8	189.8	10,000 *	49.0	188.3	10,000*	50.8	184.8	10,000*	180
190	43.6	179.6	10,000 *	45.7	178.1	10,000*	47.5	174.3	10,000*	190
200	40.1	168.2	10,000 *	42.2	166.6	10,000*	43.9	162.5	10,000*	200
210	36.4	155.3	10,000 *	38.4	153.5	10,000*	40.0	149.0	10,000*	210
220	32.3	140.3	10,000 *	34.3	138.3	10,000*				220
230	27.6	122.5	10,000 *	29.5	120.2	10,000*				230
240	22.1	100.3	10,000 *							240



Liftcrane Jib Capacities

New York City Code
 Jib No. 123 With 12 Ft. 6 in. Strut On
 Boom No. 82LR
 184,600 Lb. Crane Counterweight
 44,000 Lb. Carbody Counterweight
 360 Degree Rating

Meets
 ANSI B30.5
 Requirements



999 SERIES 2

60 Ft. JIB

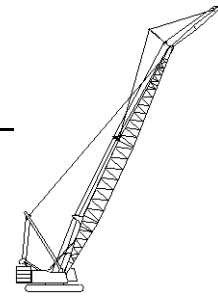
Jib Oper. Rad. Feet	0 Degree Offset			10 Degree Offset			20 Degree Offset			Jib Oper. Rad. Feet
	Boom Ang. Deg.	Jib Point Elev. Feet	Jib Capacity Pounds	Boom Ang. Deg.	Jib Point Elev. Feet	Jib Capacity Pounds	Boom Ang. Deg.	Jib Point Elev. Feet	Jib Capacity Pounds	
200 Ft. BOOM										
50	80.9	266.0	10,000 *							50
55	79.8	265.1	10,000 *							55
60	78.6	264.1	10,000 *	80.9	263.0	10,000*				60
65	77.5	263.0	10,000 *	79.7	261.9	10,000*				65
70	76.4	261.8	10,000 *	78.6	260.7	10,000*	80.8	258.0	10,000*	70
75	75.3	260.4	10,000 *	77.5	259.3	10,000*	79.7	256.7	10,000*	75
80	74.1	259.0	10,000 *	76.3	257.9	10,000*	78.5	255.2	10,000*	80
85	73.0	257.5	10,000 *	75.2	256.4	10,000*	77.3	253.7	10,000*	85
90	71.8	255.8	10,000 *	74.0	254.7	10,000*	76.2	252.0	10,000*	90
100	69.5	252.2	10,000 *	71.7	251.1	10,000*	73.8	248.3	10,000*	100
110	67.1	248.1	10,000 *	69.3	247.0	10,000*	71.4	244.2	10,000*	110
120	64.7	243.5	10,000 *	66.9	242.4	10,000*	68.9	239.5	10,000*	120
130	62.3	238.4	10,000 *	64.4	237.2	10,000*	66.4	234.3	10,000*	130
140	59.7	232.7	10,000 *	61.9	231.5	10,000*	63.9	228.5	10,000*	140
150	57.1	226.5	10,000 *	59.3	225.2	10,000*	61.2	222.1	10,000*	150
160	54.5	219.5	10,000 *	56.6	218.2	10,000*	58.5	215.0	10,000*	160
170	51.7	211.9	10,000 *	53.8	210.5	10,000*	55.7	207.2	10,000*	170
180	48.9	203.4	10,000 *	50.9	202.0	10,000*	52.7	198.5	10,000*	180
190	45.8	194.0	10,000 *	47.9	192.5	10,000*	49.7	188.8	10,000*	190
200	42.7	183.5	9,500	44.7	181.9	10,000*	46.4	178.1	10,000*	200
210	39.3	171.8	8,200	41.3	170.1	8,600	42.9	165.9	9,000	210
220	35.6	158.4	6,900	37.6	156.6	7,300	39.1	152.0	7,600	220
230	31.6	143.1	5,800	33.5	141.0	6,100				230
240	27.1	124.9	4,700	28.9	122.5	5,000				240



Liftcrane Jib Capacities

New York City Code
Jib No. 123 With 12 Ft. 6 in. Strut On
Boom No. 82LR
184,600 Lb. Crane Counterweight
44,000 Lb. Carbody Counterweight
360 Degree Rating

Meets
ANSI B30.5
Requirements



999 SERIES 2

60 Ft. JIB

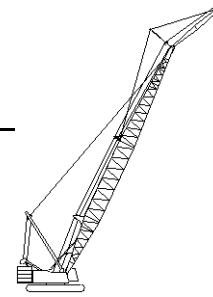
Jib Oper. Rad. Feet	0 Degree Offset			10 Degree Offset			20 Degree Offset			Jib Oper. Rad. Feet
	Boom Ang. Deg.	Jib Point Elev. Feet	Jib Capacity Pounds	Boom Ang. Deg.	Jib Point Elev. Feet	Jib Capacity Pounds	Boom Ang. Deg.	Jib Point Elev. Feet	Jib Capacity Pounds	
210 Ft. BOOM										
55	80.1	275.3	10,000 *							55
60	79.1	274.3	10,000 *							60
65	78.0	273.2	10,000 *	80.1	272.1	10,000*				65
70	76.9	272.1	10,000 *	79.0	271.0	10,000*				70
75	75.8	270.8	10,000 *	78.0	269.7	10,000*	80.1	267.0	10,000*	75
80	74.7	269.4	10,000 *	76.9	268.3	10,000*	78.9	265.6	10,000*	80
85	73.6	268.0	10,000 *	75.8	266.8	10,000*	77.8	264.1	10,000*	85
90	72.5	266.4	10,000 *	74.6	265.3	10,000*	76.7	262.5	10,000*	90
100	70.3	262.9	10,000 *	72.4	261.8	10,000*	74.4	259.0	10,000*	100
110	68.0	259.0	10,000 *	70.1	257.8	10,000*	72.1	255.0	10,000*	110
120	65.7	254.6	10,000 *	67.8	253.4	10,000*	69.8	250.6	10,000*	120
130	63.4	249.7	10,000 *	65.4	248.5	10,000*	67.4	245.6	10,000*	130
140	61.0	244.3	10,000 *	63.0	243.1	10,000*	65.0	240.1	10,000*	140
150	58.5	238.3	10,000 *	60.6	237.1	10,000*	62.5	234.0	10,000*	150
160	56.0	231.8	10,000 *	58.0	230.5	10,000*	59.9	227.3	10,000*	160
170	53.4	224.5	10,000 *	55.4	223.2	10,000*	57.2	219.9	10,000*	170
180	50.7	216.6	10,000 *	52.7	215.2	10,000*	54.5	211.8	10,000*	180
190	47.9	207.8	10,000 *	49.9	206.4	10,000*	51.6	202.8	10,000*	190
200	44.9	198.1	9,000	46.9	196.6	9,500	48.6	192.8	10,000*	200
210	41.8	187.3	7,600	43.8	185.7	8,100	45.4	181.7	8,500	210
220	38.5	175.2	6,400	40.4	173.5	6,800	42.0	169.2	7,200	220
230	34.9	161.6	5,200	36.8	159.7	5,600	38.2	155.0	5,900	230
240	31.0	145.8	4,200	32.8	143.7	4,500				240



Liftcrane Jib Capacities

New York City Code
 Jib No. 123 With 12 Ft. 6 in. Strut On
 Boom No. 82LR
 184,600 Lb. Crane Counterweight
 44,000 Lb. Carbody Counterweight
 360 Degree Rating

Meets
 ANSI B30.5
 Requirements



999 SERIES 2

60 Ft. JIB

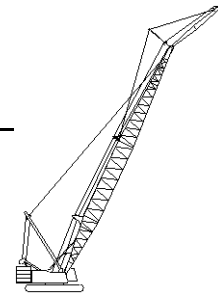
Jib Oper. Rad. Feet	0 Degree Offset			10 Degree Offset			20 Degree Offset			Jib Oper. Rad. Feet
	Boom Ang. Deg.	Jib Point Elev. Feet	Jib Capacity Pounds	Boom Ang. Deg.	Jib Point Elev. Feet	Jib Capacity Pounds	Boom Ang. Deg.	Jib Point Elev. Feet	Jib Capacity Pounds	
220 Ft. BOOM										
55	80.5	285.4	10,000 *							55
60	79.5	284.5	10,000 *							60
65	78.4	283.5	10,000 *	80.5	282.4	10,000*				65
70	77.4	282.3	10,000 *	79.4	281.2	10,000*				70
75	76.3	281.1	10,000 *	78.4	280.0	10,000*	80.4	277.3	10,000*	75
80	75.3	279.8	10,000 *	77.3	278.7	10,000*	79.4	276.0	10,000*	80
85	74.2	278.4	10,000 *	76.3	277.3	10,000*	78.3	274.5	10,000*	85
90	73.2	276.9	10,000 *	75.2	275.7	10,000*	77.2	273.0	10,000*	90
100	71.0	273.5	10,000 *	73.1	272.4	10,000*	75.0	269.6	10,000*	100
110	68.8	269.8	10,000 *	70.9	268.6	10,000*	72.8	265.8	10,000*	110
120	66.6	265.6	10,000 *	68.7	264.4	10,000*	70.6	261.5	10,000*	120
130	64.4	260.9	10,000 *	66.4	259.7	10,000*	68.3	256.8	10,000*	130
140	62.1	255.7	10,000 *	64.1	254.5	10,000*	66.0	251.5	10,000*	140
150	59.8	250.1	10,000 *	61.7	248.8	10,000*	63.6	245.7	10,000*	150
160	57.4	243.8	10,000 *	59.3	242.5	10,000*	61.1	239.4	10,000*	160
170	54.9	237.0	10,000 *	56.9	235.6	10,000*	58.6	232.4	10,000*	170
180	52.3	229.5	10,000 *	54.3	228.1	10,000*	56.0	224.7	10,000*	180
190	49.7	221.2	9,900	51.6	219.8	10,000*	53.3	216.3	10,000*	190
200	47.0	212.1	8,400	48.9	210.7	9,000	50.5	207.0	9,600	200
210	44.1	202.1	7,000	46.0	200.6	7,600	47.6	196.7	8,100	210
220	41.0	191.0	5,800	42.9	189.4	6,300	44.4	185.3	6,700	220
230	37.8	178.6	4,700	39.6	176.9	5,100	41.1	172.5	5,400	230
240				36.1	162.7	4,000				240



Liftcrane Jib Capacities

New York City Code
Jib No. 123 With 12 Ft. 6 in. Strut On
Boom No. 82LR
184,600 Lb. Crane Counterweight
44,000 Lb. Carbody Counterweight
360 Degree Rating

Meets
ANSI B30.5
Requirements



999 SERIES 2

60 Ft. JIB

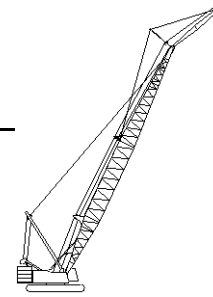
Jib Oper. Rad. Feet	0 Degree Offset			10 Degree Offset			20 Degree Offset			Jib Oper. Rad. Feet
	Boom Ang. Deg.	Jib Point Elev. Feet	Jib Capacity Pounds	Boom Ang. Deg.	Jib Point Elev. Feet	Jib Capacity Pounds	Boom Ang. Deg.	Jib Point Elev. Feet	Jib Capacity Pounds	
230 Ft. BOOM										
55	80.8	295.6	10,000 *							55
60	79.8	294.7	10,000 *							60
65	78.8	293.7	10,000 *	80.8	292.6	10,000*				65
70	77.8	292.6	10,000 *	79.8	291.5	10,000*				70
75	76.8	291.4	10,000 *	78.8	290.3	10,000*	80.8	287.6	10,000*	75
80	75.8	290.2	10,000 *	77.8	289.0	10,000*	79.7	286.3	10,000*	80
85	74.8	288.8	10,000 *	76.8	287.7	10,000*	78.7	284.9	10,000*	85
90	73.8	287.3	10,000 *	75.7	286.2	10,000*	77.7	283.4	10,000*	90
100	71.7	284.1	10,000 *	73.7	283.0	10,000*	75.6	280.2	10,000*	100
110	69.6	280.5	10,000 *	71.6	279.3	10,000*	73.5	276.5	10,000*	110
120	67.5	276.5	10,000 *	69.4	275.3	10,000*	71.3	272.4	10,000*	120
130	65.3	272.0	10,000 *	67.3	270.8	10,000*	69.1	267.9	10,000*	130
140	63.1	267.1	10,000 *	65.1	265.8	10,000*	66.9	262.8	10,000*	140
150	60.9	261.6	10,000 *	62.8	260.4	10,000*	64.6	257.3	10,000*	150
160	58.6	255.7	10,000 *	60.5	254.4	10,000*	62.3	251.3	10,000*	160
170	56.3	249.2	10,000 *	58.2	247.9	10,000*	59.9	244.6	10,000*	170
180	53.9	242.0	10,000 *	55.7	240.7	10,000*	57.4	237.4	10,000*	180
190	51.4	234.3	9,400	53.2	232.9	10,000*	54.9	229.4	10,000*	190
200	48.8	225.7	7,800	50.6	224.3	8,500	52.3	220.7	9,100	200
210	46.1	216.4	6,500	47.9	214.9	7,100	49.5	211.1	7,600	210
220	43.3	206.1	5,200	45.1	204.5	5,800	46.6	200.6	6,200	220
230	40.3	194.7	4,100	42.1	193.0	4,600	43.5	188.8	5,000	230



Liftcrane Jib Capacities

New York City Code
 Jib No. 123 With 12 Ft. 6 in. Strut On
 Boom No. 82LR
 184,600 Lb. Crane Counterweight
 44,000 Lb. Carbody Counterweight
 360 Degree Rating

Meets
 ANSI B30.5
 Requirements



999 SERIES 2

60 Ft. JIB

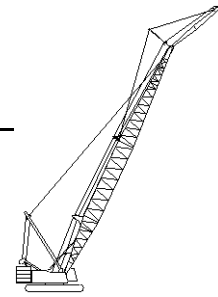
Jib Oper. Rad. Feet	0 Degree Offset			10 Degree Offset			20 Degree Offset			Jib Oper. Rad. Feet
	Boom Ang. Deg.	Jib Point Elev. Feet	Jib Capacity Pounds	Boom Ang. Deg.	Jib Point Elev. Feet	Jib Capacity Pounds	Boom Ang. Deg.	Jib Point Elev. Feet	Jib Capacity Pounds	
240 Ft. BOOM										
60	80.2	304.8	10,000 *							60
65	79.2	303.9	10,000 *							65
70	78.2	302.8	10,000 *	80.2	301.7	10,000*				70
75	77.3	301.7	10,000 *	79.2	300.6	10,000*				75
80	76.3	300.5	10,000 *	78.2	299.3	10,000*	80.1	296.6	10,000*	80
85	75.3	299.2	10,000 *	77.2	298.0	10,000*	79.1	295.3	10,000*	85
90	74.3	297.8	10,000 *	76.2	296.6	10,000*	78.1	293.8	10,000*	90
100	72.3	294.7	10,000 *	74.2	293.5	10,000*	76.1	290.7	10,000*	100
110	70.3	291.2	10,000 *	72.2	290.0	10,000*	74.0	287.2	10,000*	110
120	68.3	287.3	10,000 *	70.2	286.1	10,000*	72.0	283.2	10,000*	120
130	66.2	283.0	10,000 *	68.1	281.8	10,000*	69.9	278.9	10,000*	130
140	64.1	278.3	10,000 *	66.0	277.1	10,000*	67.7	274.1	10,000*	140
150	62.0	273.1	10,000 *	63.8	271.8	10,000*	65.6	268.8	10,000*	150
160	59.8	267.4	10,000 *	61.6	266.1	10,000*	63.3	263.0	10,000*	160
170	57.5	261.2	10,000 *	59.4	259.9	10,000*	61.1	256.7	10,000*	170
180	55.2	254.4	10,000 *	57.1	253.1	10,000*	58.7	249.8	10,000*	180
190	52.9	247.0	8,600	54.7	245.6	9,400	56.3	242.2	10,000*	190
200	50.4	239.0	7,100	52.2	237.5	7,800	53.8	234.0	8,400	200
210	47.9	230.2	5,700	49.7	228.7	6,400	51.2	225.0	6,900	210
220	45.3	220.5	4,500	47.0	219.0	5,100	48.5	215.2	5,600	220
230							45.7	204.3	4,300	230



Liftcrane Jib Capacities

New York City Code
Jib No. 123 With 12 Ft. 6 in. Strut On
Boom No. 82LR
184,600 Lb. Crane Counterweight
44,000 Lb. Carbody Counterweight
360 Degree Rating

Meets
ANSI B30.5
Requirements



999 SERIES 2

60 Ft. JIB

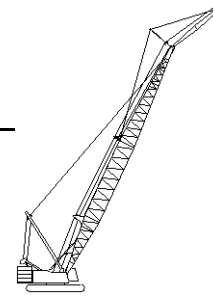
Jib Oper. Rad. Feet	0 Degree Offset			10 Degree Offset			20 Degree Offset			Jib Oper. Rad. Feet
	Boom Ang. Deg.	Jib Point Elev. Feet	Jib Capacity Pounds	Boom Ang. Deg.	Jib Point Elev. Feet	Jib Capacity Pounds	Boom Ang. Deg.	Jib Point Elev. Feet	Jib Capacity Pounds	
250 Ft. BOOM										
60	80.5	315.0	10,000 *							60
65	79.6	314.1	10,000 *							65
70	78.6	313.1	10,000 *	80.5	311.9	10,000*				70
75	77.7	312.0	10,000 *	79.5	310.8	10,000*				75
80	76.7	310.8	10,000 *	78.6	309.6	10,000*	80.4	306.9	10,000*	80
85	75.8	309.5	10,000 *	77.6	308.4	10,000*	79.5	305.6	10,000*	85
90	74.8	308.2	10,000 *	76.7	307.0	10,000*	78.5	304.2	10,000*	90
100	72.9	305.2	10,000 *	74.8	304.0	10,000*	76.6	301.2	10,000*	100
110	71.0	301.8	10,000 *	72.8	300.7	10,000*	74.6	297.8	10,000*	110
120	69.0	298.1	10,000 *	70.8	296.9	10,000*	72.6	294.0	10,000*	120
130	67.0	293.9	10,000 *	68.8	292.7	10,000*	70.6	289.8	10,000*	130
140	65.0	289.4	10,000 *	66.8	288.2	10,000*	68.5	285.2	10,000*	140
150	62.9	284.4	10,000 *	64.7	283.2	10,000*	66.4	280.1	10,000*	150
160	60.8	279.0	10,000 *	62.6	277.7	10,000*	64.3	274.6	10,000*	160
170	58.7	273.0	10,000 *	60.5	271.7	10,000*	62.1	268.5	10,000*	170
180	56.5	266.6	9,700	58.3	265.2	10,000*	59.9	262.0	10,000*	180
190	54.3	259.5	8,000	56.0	258.2	8,800	57.6	254.8	9,600	190
200	52.0	251.9	6,500	53.7	250.5	7,300	55.3	247.0	7,900	200
210	49.6	243.6	5,100	51.3	242.1	5,800	52.8	238.5	6,400	210
220				48.8	233.0	4,500	50.3	229.3	5,000	220



Liftcrane Jib Capacities

New York City Code
Jib No. 123 With 12 Ft. 6 in. Strut On
Boom No. 82LR
184,600 Lb. Crane Counterweight
44,000 Lb. Carbody Counterweight
360 Degree Rating

Meets
ANSI B30.5
Requirements



999 SERIES 2

60 Ft. JIB

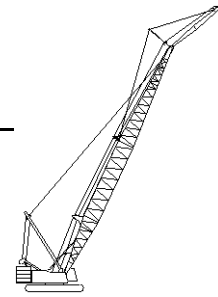
Jib Oper. Rad. Feet	0 Degree Offset			10 Degree Offset			20 Degree Offset			Jib Oper. Rad. Feet
	Boom Ang. Deg.	Jib Point Elev. Feet	Jib Capacity Pounds	Boom Ang. Deg.	Jib Point Elev. Feet	Jib Capacity Pounds	Boom Ang. Deg.	Jib Point Elev. Feet	Jib Capacity Pounds	
260 Ft. BOOM										
60	80.8	325.1	10,000 *							60
65	79.9	324.2	10,000 *							65
70	79.0	323.3	10,000 *	80.8	322.1	10,000*				70
75	78.1	322.2	10,000 *	79.9	321.1	10,000*				75
80	77.1	321.1	10,000 *	79.0	319.9	10,000*	80.7	317.1	10,000*	80
85	76.2	319.8	10,000 *	78.0	318.7	10,000*	79.8	315.9	10,000*	85
90	75.3	318.5	10,000 *	77.1	317.4	10,000*	78.9	314.6	10,000*	90
100	73.5	315.6	10,000 *	75.2	314.5	10,000*	77.0	311.6	10,000*	100
110	71.6	312.4	10,000 *	73.4	311.2	10,000*	75.1	308.4	10,000*	110
120	69.7	308.8	10,000 *	71.5	307.6	10,000*	73.2	304.7	10,000*	120
130	67.8	304.8	10,000 *	69.5	303.6	10,000*	71.2	300.7	10,000*	130
140	65.8	300.4	10,000 *	67.6	299.2	10,000*	69.3	296.2	10,000*	140
150	63.8	295.6	10,000 *	65.6	294.4	10,000*	67.2	291.4	10,000*	150
160	61.8	290.4	10,000 *	63.6	289.1	10,000*	65.2	286.0	10,000*	160
170	59.8	284.7	10,000 *	61.5	283.4	10,000*	63.1	280.3	10,000*	170
180	57.7	278.5	9,100	59.4	277.2	10,000*	61.0	274.0	10,000*	180
190	55.5	271.8	7,400	57.3	270.5	8,300	58.8	267.1	9,100	190
200	53.3	264.5	5,900	55.0	263.2	6,700	56.6	259.7	7,400	200
210	51.1	256.7	4,500	52.8	255.2	5,300	54.3	251.7	5,900	210
220				50.4	246.6	4,000	51.9	243.0	4,500	220
270 Ft. BOOM										
65	80.2	334.4	10,000 *							65
70	79.3	333.5	10,000 *							70
75	78.4	332.4	10,000 *	80.2	331.3	10,000*				75
80	77.5	331.3	10,000 *	79.3	330.2	10,000*	81.0	327.4	10,000*	80
85	76.7	330.2	10,000 *	78.4	329.0	10,000*	80.1	326.2	10,000*	85
90	75.8	328.9	10,000 *	77.5	327.7	10,000*	79.2	324.9	10,000*	90
100	74.0	326.1	10,000 *	75.7	324.9	10,000*	77.4	322.1	10,000*	100
110	72.2	323.0	10,000 *	73.9	321.8	10,000*	75.6	318.9	10,000*	110
120	70.3	319.5	10,000 *	72.1	318.3	10,000*	73.7	315.4	10,000*	120
130	68.5	315.6	10,000 *	70.2	314.4	10,000*	71.8	311.5	10,000*	130
140	66.6	311.4	10,000 *	68.3	310.2	10,000*	69.9	307.2	10,000*	140
150	64.7	306.8	10,000 *	66.4	305.5	10,000*	68.0	302.5	10,000*	150
160	62.8	301.7	10,000 *	64.5	300.5	10,000*	66.0	297.4	10,000*	160
170	60.8	296.3	10,000 *	62.5	295.0	10,000*	64.0	291.8	10,000*	170
180	58.8	290.3	8,600	60.5	289.0	9,500	62.0	285.8	10,000*	180
190	56.7	283.9	6,900	58.4	282.6	7,700	59.9	279.3	8,600	190
200	54.6	277.0	5,300	56.3	275.6	6,100	57.8	272.2	6,900	200
210	52.5	269.5	4,000	54.1	268.0	4,700	55.6	264.6	5,400	210
220							53.3	256.3	4,000	220



Liftcrane Jib Capacities

New York City Code
Jib No. 123 With 12 Ft. 6 in. Strut On
Boom No. 82LR
184,600 Lb. Crane Counterweight
44,000 Lb. Carbody Counterweight
360 Degree Rating

Meets
ANSI B30.5
Requirements



999 SERIES 2

60 Ft. JIB

Jib Oper. Rad. Feet	0 Degree Offset			10 Degree Offset			20 Degree Offset			Jib Oper. Rad. Feet
	Boom Ang. Deg.	Jib Point Elev. Feet	Jib Capacity Pounds	Boom Ang. Deg.	Jib Point Elev. Feet	Jib Capacity Pounds	Boom Ang. Deg.	Jib Point Elev. Feet	Jib Capacity Pounds	
280 Ft. BOOM										
65	80.5	344.6	10,000 *							65
70	79.6	343.7	10,000 *							70
75	78.8	342.7	10,000 *	80.5	341.5	10,000*				75
80	77.9	341.6	10,000 *	79.6	340.4	10,000*				80
85	77.1	340.4	10,000 *	78.8	339.3	10,000*	80.4	336.5	10,000*	85
90	76.2	339.2	10,000 *	77.9	338.0	10,000*	79.5	335.2	10,000*	90
100	74.5	336.5	10,000 *	76.1	335.3	10,000*	77.8	332.5	10,000*	100
110	72.7	333.5	10,000 *	74.4	332.3	10,000*	76.0	329.4	10,000*	110
120	70.9	330.1	10,000 *	72.6	328.9	10,000*	74.2	326.0	10,000*	120
130	69.1	326.4	10,000 *	70.8	325.2	10,000*	72.4	322.2	10,000*	130
140	67.3	322.3	10,000 *	69.0	321.1	10,000*	70.6	318.1	10,000*	140
150	65.5	317.8	10,000 *	67.1	316.6	10,000*	68.7	313.6	10,000*	150
160	63.6	313.0	10,000 *	65.3	311.7	10,000*	66.8	308.6	10,000*	160
170	61.7	307.7	9,700	63.4	306.4	10,000*	64.9	303.3	10,000*	170
180	59.8	302.0	7,800	61.4	300.7	8,800	62.9	297.5	9,800	180
190	57.8	295.9	6,100	59.5	294.5	7,100	60.9	291.3	7,900	190
200	55.8	289.2	4,600	57.4	287.9	5,500	58.9	284.5	6,200	200
210				55.4	280.6	4,000	56.8	277.2	4,700	210
290 Ft. BOOM										
65	80.8	354.7	10,000 *							65
70	79.9	353.8	10,000 *							70
75	79.1	352.9	10,000 *	80.8	351.7	10,000*				75
80	78.3	351.8	10,000 *	79.9	350.7	10,000*				80
85	77.4	350.7	10,000 *	79.1	349.5	10,000*	80.7	346.7	10,000*	85
90	76.6	349.5	10,000 *	78.2	348.3	10,000*	79.9	345.5	10,000*	90
100	74.9	346.9	10,000 *	76.6	345.7	10,000*	78.2	342.9	10,000*	100
110	73.2	344.0	10,000 *	74.8	342.8	10,000*	76.4	339.9	10,000*	110
120	71.5	340.7	10,000 *	73.1	339.5	10,000*	74.7	336.6	10,000*	120
130	69.8	337.1	10,000 *	71.4	335.9	10,000*	72.9	332.9	10,000*	130
140	68.0	333.1	10,000 *	69.6	331.9	10,000*	71.2	328.9	10,000*	140
150	66.2	328.8	10,000 *	67.8	327.6	10,000*	69.4	324.6	10,000*	150
160	64.4	324.2	10,000 *	66.0	322.9	10,000*	67.5	319.8	10,000*	160
170	62.6	319.1	9,100	64.2	317.8	10,000*	65.7	314.7	10,000*	170
180	60.7	313.6	7,200	62.3	312.3	8,300	63.8	309.1	9,300	180
190	58.9	307.7	5,500	60.4	306.3	6,500	61.9	303.1	7,400	190
200	56.9	301.3	4,000	58.5	299.9	4,900	59.9	296.6	5,700	200
210							57.9	289.6	4,200	210