

Liftcrane Boom Capacities

Boom No. 82LR
67 860 kg Counterweight
360 Degree Rating

Maximum Operating Wind Speeds
(includes all jib lengths)
14 m/s with 36.6m thru 54.9m Boom
10 m/s with 57.9m thru 73.2m Boom
7 m/s with 76.2m thru 85.3m Boom

999 SERIES 1

LIFTING CAPACITIES: Lifting capacities for various boom lengths and operating radii are for freely suspended loads and are calculated to comply with EN 13000, ISO 4305 and include factors based on a 4.0 degree tipping angle. Capacities based on structural competence are denoted by an asterisk (*).

Upper boom point capacity for liftcrane service with single part whip line is 13 380 kg. When boom butt mounted auxiliary drum is used, capacity with single part whip line is 9 070 kg. In all cases, upper boom point capacities cannot exceed those listed for main boom capacity.

Weight of jib, all load blocks, hooks, weight ball, slings, etc., beneath boom and jib point sheaves, is considered part of main boom load. Reeved hoist line included in boom weight. Boom is not to be lowered beyond radii where combined weights are greater than rated capacity. Where no capacity is shown, operation is not intended or approved.

OPERATING CONDITIONS: Machine to operate in a level position on a firm uniformly supporting surface with gantry up. Refer to boom rigging **No. 196100** and Wire Rope Specification chart **No. 8337-A**. Crane operator judgment must be used to allow for dynamic load effects of swinging, hoisting or lowering, travel, wind conditions, as well as adverse operating conditions and physical machine depreciation. Refer to operators manual for operating guidelines.

WIND CONDITIONS: Machine may be operated in winds stated in Maximum Operating Wind Speed table provided crane operator judgment is used to allow for wind effect on lifted load and other considerations noted on capacity chart are followed. Wind will have a considerable effect on load with a large "sail area" and must be compensated for accordingly by reducing load ratings, reducing operating speeds, or by a combination of both. Wind speed to be measured at boom point elevation. **Operation is not permitted when wind is above conditions stated in Maximum Operating Wind Speed table.** Park crane (upper inline with crawlers) with load block on ground or secured and position boom at 70 degrees. Lower boom onto blocking at ground level when wind is above 22 m/s.

MACHINE TRAVEL: Machine to travel on a firm, level [up to 1 percent (0.5 degrees) grade] and uniformly supporting

surface. *Travel with 100 percent of rated load prohibited.* Travel restricted to 90 percent of rated capacity with speed not to exceed 0.4 m/s. Boom must be within boom angle range shown in capacity chart. Refer to Maximum Allowable Travel Specification chart **No. 8316-B**.

MAX PERMISSIBLE SLEWING SPEED: Slewing operation with working load shall not exceed 0.4 m/s as measured at the operating radius. The amount of time to brake or start slewing a working load shall not be less than 2.5 seconds.

OPERATING RADIUS: Operating radius is horizontal distance from axis of rotation to center of vertical hoist line or load block. Boom angle is angle between horizontal and centerline of boom butt and inserts, and is an indication of operating radius. In all cases, operating radius shall govern capacity.

BOOM POINT ELEVATION: Boom point elevation is vertical distance from ground level to centerline of boom point shaft.

MACHINE EQUIPMENT: Machine equipped with 8 585 mm crawlers, 1 219 mm treads, 3 124 mm retractable gantry, 9 144 mm live mast, 20 part boom hoist reeving, boom support straps and 67 860 kg counterweight.

Deduct From Capacities When Jib Is Attached		
Jib Length	Jib No. 134	Jib No. 123
9.1m	1 220 kg	1 130 kg
12.2m	1 590 kg	1 410 kg
15.2m	1 950 kg	1 680 kg
18.3m	2 310 kg	2 000 kg
21.3m	2 770 kg	—
24.4m	3 220 kg	—

Boom Catwalks Deduct
Deduct 350 kg from capacities when boom catwalks are attached.

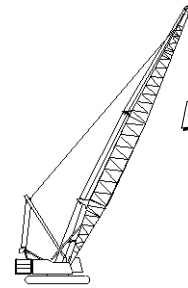


Liftcrane Boom Capacities

Boom No. 82LR
67 860 kg Counterweight
360 Degree Rating

Maximum Operating Wind Speeds
(includes all jib lengths)

14 m/s with 36.6m thru 54.9m Boom
10 m/s with 57.9m thru 73.2m Boom
7 m/s with 76.2m thru 85.3m Boom



999 SERIES 1

WITHOUT BOOM CATWALKS					
Maximum Boom and Jib Lengths Lifted Unassisted					
Over End of Blocked Crawlers			Over Side of Crawlers		
Boom Length	Jib No. 134	Jib No. 123	Boom Length	Jib No. 134	Jib No. 123
(a)(b) 85.3m	—	—	(c) 79.2m	—	—
82.3m	—	—	76.2m	—	—
79.2m	(c) 9.1m - 12.2m	(c) 12.2m - 15.2m	73.2m	(c) 9.1m	(c) 9.1m - 12.2m
79.2m	—	9.1m	70.1m	(c) 15.2m - 18.3m	(c) 18.3m
76.2m	(c) 15.2m - 18.3m	(c) 18.3m	70.1m	12.2m	15.2m
76.2m	12.2m	15.2m	67.1m	(c) 24.4m	18.3m
73.2m	(c) 24.4m	18.3m	67.1m	(b) 21.3m	—
73.2m	(b) 21.3m	—	67.1m	18.3m	—
73.2m	18.3m	—	64.0m	24.4m	—
70.1m	24.4m	—	—	—	—

Load block, hook and weight ball on ground at start.
(a) Upper boom point must be removed.
(b) Machine must be equipped with optional lowerworks jacking cylinders.
(c) Raising reserve is less than 10% tip weight.

WITH BOOM CATWALKS					
Maximum Boom and Jib Lengths Lifted Unassisted					
Over End of Blocked Crawlers			Over Side of Crawlers		
Boom Length	Jib No. 134	Jib No. 123	Boom Length	Jib No. 134	Jib No. 123
(b) 85.3m	—	—	(b) 79.2m	—	—
82.3m	—	—	76.2m	—	—
79.2m	(b) 9.1m	(a)(b) 9.1m - 15.2m	73.2m	(a)(b) 9.1m	(b) 9.1m - 12.2m
76.2m	(a)(b) 12.2m - 18.3m	(b) 15.2m - 18.3m	70.1m	(a)(b) 12.2m - 18.3m	(b) 15.2m - 18.3m
76.2m	9.1m	12.2m	70.1m	9.1m	12.2m
73.2m	(b) 21.3m - 24.4m	18.3m	67.1m	(b) 21.3m - 24.4m	18.3m
73.2m	(a) 18.3m	—	67.1m	(a) 18.3m	—
73.2m	15.2m	—	67.1m	15.2m	—
70.1m	24.4m	—	64.0m	24.4m	—

Load block, hook and weight ball on ground at start.
(a) Machine must be equipped with optional lowerworks jacking cylinders.
(b) Raising reserve is less than 10% tip weight.

Consult jib chart for jib capacities. Upper boom point cannot be used when jib is attached.



Liftcrane Boom Capacities

Boom No. 82LR
67 860 kg Counterweight
360 Degree Rating

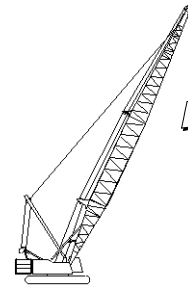
Maximum Operating Wind Speeds
(includes all jib lengths)
14 m/s with 36.6m thru 54.9m Boom
10 m/s with 57.9m thru 73.2m Boom
7 m/s with 76.2m thru 85.3m Boom

999 SERIES 1

Oper. Rad. Meters	Boom Ang. Deg.	Boom Point Elev. Meters	Boom Capacity Kilograms
36.6m (120 Ft.) Boom			
7.3	80.9	38.6	102 600
8.0	79.8	38.5	92 900
9.0	78.2	38.3	81 400
10.0	76.6	38.1	72 300
11.0	75.0	37.8	64 900
12.0	73.4	37.5	58 800
13.0	71.7	37.2	53 600
14.0	70.1	36.9	49 200
15.0	68.4	36.5	45 500
16.0	66.7	36.1	41 900
18.0	63.2	35.1	35 300
20.0	59.7	34.1	30 400
22.0	56.0	32.8	26 500
24.0	52.1	31.3	23 400
26.0	48.0	29.7	20 800
28.0	43.6	27.7	18 700
30.0	38.9	25.4	16 900
32.0	33.6	22.7	15 300
34.0	27.4	19.3	13 900
36.0	19.5	14.7	12 800
39.6m (130 Ft.) Boom			
7.9	80.7	41.6	91 000
8.0	80.6	41.6	90 100
9.0	79.1	41.4	79 100
10.0	77.6	41.2	70 500
11.0	76.2	41.0	63 300
12.0	74.7	40.7	57 400
13.0	73.2	40.4	52 500
14.0	71.6	40.1	48 200
15.0	70.1	39.7	44 500
16.0	68.6	39.4	41 200
18.0	65.4	38.5	35 200
20.0	62.2	37.5	30 200
22.0	58.9	36.4	26 300
24.0	55.4	35.1	23 200
26.0	51.9	33.6	20 600
28.0	48.1	32.0	18 500
30.0	44.1	30.0	16 600
32.0	39.7	27.8	15 100
34.0	35.0	25.2	13 700
36.0	29.5	22.0	12 600
38.0	23.0	18.0	11 600

Oper. Rad. Meters	Boom Ang. Deg.	Boom Point Elev. Meters	Boom Capacity Kilograms
42.7m (140 Ft.) Boom			
8.5	80.5	44.6	81 500
9.0	79.9	44.5	77 000
10.0	78.5	44.3	68 600
11.0	77.2	44.1	61 800
12.0	75.8	43.9	56 100
13.0	74.4	43.6	51 300
14.0	73.0	43.3	47 100
15.0	71.6	43.0	43 500
16.0	70.2	42.6	40 400
18.0	67.3	41.8	34 900
20.0	64.3	40.9	30 000
22.0	61.3	39.9	26 100
24.0	58.2	38.8	23 000
26.0	55.0	37.4	20 400
28.0	51.7	36.0	18 200
30.0	48.1	34.3	16 400
32.0	44.4	32.4	14 800
34.0	40.4	30.2	13 500
36.0	36.1	27.6	12 300
38.0	31.3	24.6	11 300
40.0	25.6	20.9	10 400
42.0	18.5	16.0	9 600
45.7m (150 Ft.) Boom			
9.1	80.4	47.6	73 600
10.0	79.3	47.4	66 800
11.0	78.0	47.2	60 200
12.0	76.8	47.0	54 700
13.0	75.5	46.7	50 100
14.0	74.2	46.5	46 100
15.0	72.9	46.2	42 600
16.0	71.5	45.9	39 500
18.0	68.9	45.1	34 300
20.0	66.2	44.3	29 800
22.0	63.4	43.4	25 900
24.0	60.6	42.3	22 800
26.0	57.6	41.1	20 200
28.0	54.6	39.8	18 000
30.0	51.5	38.3	16 200
32.0	48.2	36.6	14 600
34.0	44.7	34.7	13 200
36.0	41.1	32.5	12 000
38.0	37.1	30.0	11 000
40.0	32.7	27.2	10 100
42.0	27.7	23.7	9 300
44.0	21.7	19.4	8 600

Oper. Rad. Meters	Boom Ang. Deg.	Boom Point Elev. Meters	Boom Capacity Kilograms
48.8m (160 Ft.) Boom			
9.1	81.0	50.7	71 600
10.0	80.0	50.5	65 100
11.0	78.8	50.3	58 800
12.0	77.6	50.1	53 500
13.0	76.4	49.9	48 900
14.0	75.2	49.6	45 000
15.0	74.0	49.4	41 600
16.0	72.7	49.1	38 600
18.0	70.3	48.4	33 600
20.0	67.7	47.6	29 600
22.0	65.2	46.7	25 700
24.0	62.6	45.8	22 600
26.0	59.9	44.7	20 000
28.0	57.1	43.4	17 800
30.0	54.3	42.1	15 900
32.0	51.3	40.6	14 300
34.0	48.2	38.9	13 000
36.0	45.0	37.0	11 800
38.0	41.6	34.9	10 700
40.0	37.9	32.5	9 800
42.0	33.9	29.7	9 000
44.0	29.4	26.4	8 200
46.0	24.2	22.5	7 600
51.8m (170 Ft.) Boom			
9.8	80.9	53.6	65 100
10.0	80.6	53.6	63 500
11.0	79.5	53.4	57 400
12.0	78.3	53.2	52 200
13.0	77.2	53.0	47 800
14.0	76.1	52.8	44 000
15.0	74.9	52.5	40 700
16.0	73.8	52.2	37 800
18.0	71.5	51.6	32 900
20.0	69.1	50.9	28 900
22.0	66.7	50.1	25 500
24.0	64.3	49.2	22 300
26.0	61.8	48.2	19 700
28.0	59.3	47.0	17 500
30.0	56.7	45.8	15 700
32.0	54.0	44.4	14 100
34.0	51.2	42.9	12 700
36.0	48.3	41.2	11 500
38.0	45.3	39.3	10 400
40.0	42.1	37.2	9 500
42.0	38.6	34.8	8 700
44.0	34.9	32.2	8 000
46.0	30.9	29.1	7 300
48.0	26.2	25.4	6 700
50.0	20.7	20.8	6 200



Liftcrane Boom Capacities

Boom No. 82LR
67 860 kg Counterweight
360 Degree Rating

Maximum Operating Wind Speeds
(includes all jib lengths)

14 m/s with 36.6m thru 54.9m Boom
10 m/s with 57.9m thru 73.2m Boom
7 m/s with 76.2m thru 85.3m Boom

999 SERIES 1

Oper. Rad. Meters	Boom Ang. Deg.	Boom Point Elev. Meters	Boom Capacity Kilograms
54.9m (180 Ft.) Boom			
10.4	80.7	56.6	59 700
11.0	80.1	56.5	56 100
12.0	79.0	56.3	51 100
13.0	77.9	56.1	46 900
14.0	76.9	55.9	43 200
15.0	75.8	55.7	39 900
16.0	74.7	55.4	37 100
18.0	72.5	54.8	32 300
20.0	70.3	54.1	28 400
22.0	68.1	53.4	25 200
24.0	65.8	52.5	22 300
26.0	63.5	51.6	19 600
28.0	61.1	50.5	17 400
30.0	58.7	49.4	15 600
32.0	56.3	48.1	14 000
34.0	53.7	46.7	12 600
36.0	51.1	45.2	11 400
38.0	48.3	43.5	10 300
40.0	45.5	41.6	9 300
42.0	42.5	39.5	8 500
44.0	39.3	37.2	7 800
46.0	35.8	34.6	7 100
48.0	32.1	31.6	6 500
50.0	27.9	28.2	6 000
52.0	23.1	24.0	5 500
57.9m (190 Ft.) Boom			
11.0	80.6	59.6	54 900
12.0	79.6	59.4	49 900
13.0	78.6	59.2	45 800
14.0	77.6	59.0	42 200
15.0	76.5	58.8	39 100
16.0	75.5	58.6	36 300
18.0	73.5	58.0	31 600
20.0	71.4	57.4	27 800
22.0	69.3	56.7	24 600
24.0	67.2	55.9	21 900
26.0	65.0	55.0	19 400
28.0	62.8	54.0	17 200
30.0	60.5	52.9	15 300
32.0	58.2	51.7	13 700
34.0	55.9	50.4	12 300
36.0	53.5	49.0	11 100

Oper. Rad. Meters	Boom Ang. Deg.	Boom Point Elev. Meters	Boom Capacity Kilograms
57.9m (190 Ft.) Boom			
38.0	51.0	47.5	10 000
40.0	48.4	45.8	9 100
42.0	45.7	43.9	8 300
44.0	42.8	41.8	7 500
46.0	39.8	39.6	6 800
48.0	36.6	37.0	6 200
50.0	33.2	34.2	5 600
52.0	29.4	30.9	5 200
54.0	25.0	27.0	4 700
56.0	19.8	22.1	4 400
61.0m (200 Ft.) Boom			
11.6	80.5	62.6	50 700
12.0	80.1	62.5	48 900
13.0	79.1	62.4	44 800
14.0	78.2	62.2	41 300
15.0	77.2	61.9	38 200
16.0	76.3	61.7	35 500
18.0	74.3	61.2	30 900
20.0	72.4	60.6	27 200
22.0	70.4	59.9	24 100
24.0	68.4	59.2	21 500
26.0	66.3	58.3	19 300
28.0	64.3	57.4	17 000
30.0	62.2	56.4	15 100
32.0	60.0	55.3	13 600
34.0	57.8	54.1	12 200
36.0	55.6	52.8	10 900
38.0	53.2	51.3	9 800
40.0	50.9	49.8	8 900
42.0	48.4	48.1	8 000
44.0	45.8	46.2	7 300
46.0	43.1	44.2	6 600
48.0	40.3	41.9	5 900
50.0	37.3	39.4	5 400
52.0	34.1	36.7	4 900
54.0	30.6	33.5	4 400
56.0	26.7	29.8	4 000
58.0	22.1	25.4	3 600
64.0m (210 Ft.) Boom			
11.6	81.0	65.7	49 500
12.0	80.6	65.6	47 700
13.0	79.7	65.5	43 800
14.0	78.8	65.3	40 300
15.0	77.8	65.1	37 400
16.0	76.9	64.8	34 700
18.0	75.1	64.3	30 200
20.0	73.2	63.8	26 600
22.0	71.3	63.1	23 500
24.0	69.4	62.4	20 900

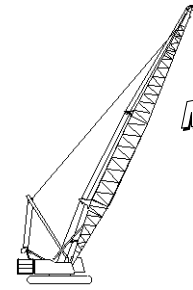
Oper. Rad. Meters	Boom Ang. Deg.	Boom Point Elev. Meters	Boom Capacity Kilograms
64.0m (210 Ft.) Boom			
26.0	67.5	61.6	18 800
28.0	65.6	60.8	16 800
30.0	63.6	59.8	14 900
32.0	61.6	58.8	13 300
34.0	59.5	57.6	11 900
36.0	57.4	56.4	10 600
38.0	55.3	55.1	9 600
40.0	53.1	53.6	8 600
42.0	50.8	52.1	7 800
44.0	48.4	50.4	7 000
46.0	46.0	48.5	6 300
48.0	43.4	46.5	5 700
50.0	40.8	44.3	5 100
52.0	37.9	41.8	4 600
54.0	34.9	39.1	4 100
56.0	31.7	36.1	3 700
58.0	28.1	32.6	3 300
60.0	24.0	28.5	2 900
62.0	19.1	23.5	2 700
67.1m (220 Ft.) Boom			
12.2	80.8	68.7	45 800
13.0	80.1	68.6	42 700
14.0	79.3	68.4	39 400
15.0	78.4	68.2	36 500
16.0	77.5	68.0	33 900
18.0	75.8	67.5	29 500
20.0	74.0	66.9	25 900
22.0	72.2	66.3	22 900
24.0	70.4	65.7	20 400
26.0	68.6	64.9	18 300
28.0	66.7	64.1	16 400
30.0	64.9	63.2	14 600
32.0	63.0	62.2	13 000
34.0	61.0	61.2	11 600
36.0	59.1	60.0	10 400
38.0	57.0	58.8	9 300
40.0	55.0	57.4	8 300
42.0	52.9	55.9	7 500
44.0	50.7	54.4	6 700
46.0	48.5	52.7	6 000
48.0	46.1	50.8	5 300
50.0	43.7	48.8	4 800
52.0	41.2	46.6	4 300
54.0	38.5	44.2	3 800
56.0	35.7	41.6	3 400
58.0	32.6	38.6	3 000
60.0	29.3	35.3	2 600
62.0	25.6	31.5	2 300
64.0	21.3	26.8	2 000



Liftcrane Boom Capacities

Boom No. 82LR
67 860 kg Counterweight
360 Degree Rating

Maximum Operating Wind Speeds
(includes all jib lengths)
14 m/s with 36.6m thru 54.9m Boom
10 m/s with 57.9m thru 73.2m Boom
7 m/s with 76.2m thru 85.3m Boom

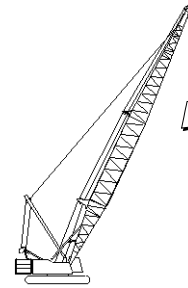


999 SERIES 1

Oper. Rad. Meters	Boom Ang. Deg.	Boom Point Elev. Meters	Boom Capacity Kilograms
70.1m (230 Ft.) Boom			
12.8	80.7	71.7	42 600
13.0	80.6	71.6	42 000
14.0	79.7	71.5	38 700
15.0	78.9	71.3	35 800
16.0	78.1	71.1	33 300
18.0	76.4	70.6	29 000
20.0	74.7	70.1	25 500
22.0	73.0	69.5	22 600
24.0	71.3	68.9	20 100
26.0	69.6	68.2	18 000
28.0	67.8	67.4	16 100
30.0	66.0	66.5	14 500
32.0	64.2	65.6	13 000
34.0	62.4	64.6	11 600
36.0	60.5	63.5	10 300
38.0	58.6	62.4	9 200
40.0	56.7	61.1	8 300
42.0	54.7	59.7	7 400
44.0	52.7	58.3	6 600
46.0	50.6	56.7	5 900
48.0	48.5	55.0	5 300
50.0	46.3	53.1	4 700
52.0	43.9	51.1	4 200
54.0	41.5	49.0	3 700
56.0	39.0	46.6	3 300
58.0	36.3	44.0	2 800
60.0	33.5	41.2	2 500
62.0	30.4	37.9	2 100
64.0	27.0	34.3	1 800
73.2m (240 Ft.) Boom			
13.4	80.6	74.7	39 500
14.0	80.2	74.6	37 700
15.0	79.4	74.4	34 900
16.0	78.6	74.2	32 500
18.0	77.0	73.8	28 200
20.0	75.4	73.3	24 800
22.0	73.7	72.7	21 900
24.0	72.1	72.1	19 500
26.0	70.5	71.4	17 400
28.0	68.8	70.7	15 600
30.0	67.1	69.9	14 000
32.0	65.4	69.0	12 600
34.0	63.6	68.0	11 200
36.0	61.9	67.0	10 000
38.0	60.1	65.9	8 900
40.0	58.3	64.7	7 900

Oper. Rad. Meters	Boom Ang. Deg.	Boom Point Elev. Meters	Boom Capacity Kilograms
73.2m (240 Ft.) Boom			
42.0	56.4	63.4	7 000
44.0	54.5	62.0	6 200
46.0	52.6	60.6	5 500
48.0	50.6	59.0	4 900
50.0	48.5	57.3	4 300
52.0	46.4	55.4	3 800
54.0	44.2	53.5	3 300
56.0	41.9	51.3	2 900
58.0	39.5	49.0	2 400
60.0	36.9	46.4	2 100
76.2m (250 Ft.) Boom			
13.4	81.0	77.8	38 800
14.0	80.6	77.7	37 000
15.0	79.8	77.5	34 300
16.0	79.0	77.3	31 900
18.0	77.5	76.9	27 800
20.0	76.0	76.4	24 400
22.0	74.4	75.9	21 600
24.0	72.8	75.3	19 100
26.0	71.3	74.6	17 100
28.0	69.7	73.9	15 300
30.0	68.1	73.2	13 700
32.0	66.4	72.3	12 300
34.0	64.8	71.4	11 100
36.0	63.1	70.4	10 000
38.0	61.4	69.4	8 800
40.0	59.7	68.3	7 800
42.0	57.9	67.0	7 000
44.0	56.1	65.7	6 200
46.0	54.3	64.4	5 500
48.0	52.4	62.9	4 800
50.0	50.5	61.3	4 200
52.0	48.5	59.6	3 700
54.0	46.5	57.7	3 200
56.0	44.4	55.8	2 700
58.0	42.2	53.6	2 300
60.0	39.9	51.3	1 900
79.2m (260 Ft.) Boom			
14.0	80.9	80.7	36 100
15.0	80.2	80.6	33 500
16.0	79.5	80.4	31 100
18.0	78.0	80.0	27 100
20.0	76.5	79.5	23 800
22.0	75.0	79.0	21 000
24.0	73.5	78.5	18 600
26.0	72.0	77.9	16 600
28.0	70.5	77.2	14 800
30.0	68.9	76.4	13 300

Oper. Rad. Meters	Boom Ang. Deg.	Boom Point Elev. Meters	Boom Capacity Kilograms
79.2m (260 Ft.) Boom			
32.0	67.4	75.6	11 900
34.0	65.8	74.8	10 700
36.0	64.2	73.8	9 600
38.0	62.6	72.8	8 600
40.0	61.0	71.8	7 600
42.0	59.3	70.6	6 700
44.0	57.6	69.4	5 900
46.0	55.9	68.1	5 200
48.0	54.1	66.7	4 600
50.0	52.3	65.2	4 000
52.0	50.4	63.6	3 400
54.0	48.5	61.9	2 900
56.0	46.6	60.0	2 500
58.0	44.5	58.1	2 100
82.3m (270 Ft.) Boom			
14.6	80.8	83.7	33 700
15.0	80.6	83.7	32 700
16.0	79.9	83.5	30 400
18.0	78.5	83.1	26 400
20.0	77.0	82.7	23 200
22.0	75.6	82.2	20 400
24.0	74.2	81.7	18 100
26.0	72.7	81.1	16 100
28.0	71.2	80.4	14 300
30.0	69.8	79.7	12 800
32.0	68.3	78.9	11 400
34.0	66.8	78.1	10 200
36.0	65.2	77.2	9 200
38.0	63.7	76.3	8 200
40.0	62.1	75.2	7 300
42.0	60.5	74.1	6 400
44.0	58.9	73.0	5 600
46.0	57.3	71.7	4 900
48.0	55.6	70.4	4 300
50.0	53.9	69.0	3 700
52.0	52.2	67.5	3 200
54.0	50.4	65.9	2 600
56.0	48.6	64.2	2 200



Liftcrane Boom Capacities

Boom No. 82LR
67 860 kg Counterweight
360 Degree Rating

Maximum Operating Wind Speeds
 (includes all jib lengths)

14 m/s with 36.6m thru 54.9m Boom
 10 m/s with 57.9m thru 73.2m Boom
 7 m/s with 76.2m thru 85.3m Boom

999 SERIES 1

Oper. Rad. Meters	Boom Ang. Deg.	Boom Point Elev. Meters	Boom Capacity Kilograms
85.3m (280 Ft.) Boom			
15.2	80.8	86.7	31 600
16.0	80.2	86.6	29 900
18.0	78.9	86.2	26 000
20.0	77.5	85.8	22 800
22.0	76.1	85.3	20 100
24.0	74.7	84.8	17 800
26.0	73.3	84.2	15 800
28.0	71.9	83.6	14 000
30.0	70.5	82.9	12 500
32.0	69.1	82.2	11 200
34.0	67.6	81.4	10 000
36.0	66.2	80.6	8 900
38.0	64.7	79.6	7 900
40.0	63.2	78.7	7 100
42.0	61.7	77.6	6 300
44.0	60.2	76.5	5 600
46.0	58.6	75.3	4 800
48.0	57.0	74.1	4 200
50.0	55.4	72.7	3 600
52.0	53.7	71.3	3 000
54.0	52.1	69.8	2 500
56.0	50.3	68.2	2 100

REFERENCE ONLY!